



WYK ASSOCIATES, INC.
ARCHITECTURE • PLANNING

July 11, 2012

Department of Administration Purchasing Division
Building 15
2019 Washington Street
Charleston, WV 25305

Re: RFQ No. CHA12017

Dear Ms. Hill:

WYK Associates, Inc. is very delighted to provide this expression of our interest to provide the A/E Services for this exciting project! Our project team has provided A/E services for a variety of historic buildings, but of particular relevance are:

- Stabilization of the Gassaway Railroad Station for future adaptive reuse - (DOT Grant), currently being reviewed by DOT and SHPO.
- Preservation and adaptive reuse of the Morgantown Railroad Station.
- 2nd Adaptive reuse of the Salem Railroad Depot; WYK Associates, Inc. was the architect for the restoration of the building in the 1980's, and recently worked with the town for documents to repair and restore the building after a fire heavily damaged it near the end of 2008.

Our Team has myriad of experience working on buildings listed on the National Historic Register and/or within a designated Historic District. We prefer working on such projects more so than new ones, as there is a sense of community pride and accomplishment during the process of returning a "diamond in the rough" back to its former glory. We have worked with and are familiar with the Secretary of the Interior's Standards for Historic Preservation, and with the State Historic Preservation Office. We have worked on historic projects where budget limitations required a phased approach to the project completion. This typically involves an initial phase to stabilize the building and prevent further deterioration, which we understand is the scope of this undertaking. We recently completed the last Phase of a 3 Phase adaptive reuse of an elegant historic structure on the Fairmont State University Campus as a classroom building with an expansive Two Story multi-use gallery space. Originally built as a barn, it was later converted to high end faculty housing and eventually converted to student housing. This building sat abandoned and had fallen victim to neglect for a period of years and was in danger of structural collapse.

We have included project profiles and information on these and other relevant projects, as well as, information on our project team. We are very confident that we can provide the expertise and ingenuity that will be required to complete this phase of work, eventually moving forward to successfully restore this historic structure to its previous splendor.

We are confident our design team can assist you in developing an effective program to identify your needs, and a functional design solution to be incorporated within the existing facility. We look forward to the opportunity to present our project team in person, and will be happy to answer any questions or provide additional data that may assist you with your evaluations.

Sincerely,

James B. Swiger, AIA, NCARB, LEED AP
President

RECEIVED
2012 JUL 12 AM 11:45
WYK ASSOCIATES, INC.
DIVISION

205 Washington Avenue
Clarksburg, WV 26301
p. 304.624.6326
f. 304.623.9858

wykarchitects.com



WYK ASSOCIATES, INC.
ARCHITECTURE · PLANNING

WYK Associates, Inc. **Architecture - Planning**



Who We Are:

- WYK Associates, Inc. is a full service architectural and planning firm serving a wide variety of commercial, religious, educational, civic and industrial clientele. Carleton Wood, Jr. was a third generation architect. His grandfather's firm had roots in North Central West Virginia dating back to the early twentieth century. William Yoke, Jr. and Howard Kelley partnered with Mr. Wood in 1974 to form WYK Associates, Inc. Our archives are filled with a century's worth of historic work.
- Mr. James Swiger, AIA, president of the firm, assumed that role at the beginning of 2011, He has been with WYK since 2005.
- Mr. William Yoke, Jr., AIA retired at the end of 2011 but is still involved with consulting and quality assessment / quality control.

Our Project Philosophy:

- **COMMUNICATION & TEAMWORK** are our guide words for each project. Our client's requirements for quality, service and value are the driving force behind each decision.
- Through collaboration with engineering consultants we address the needs and schedule requirements of each client.
- We provide thorough planning in all areas of each project to fit the individual requirements for a positive impact on both the natural and built environments. Energy conservation and product safety are very important concerns.

Project Management:

- We carefully evaluate the client's program, design concerns, budget, funding sources, and other available data to assure a clear understanding of each project.
- We incorporate input from our client and consultants to establish the budget and schedule. These facets are updated during each stage of project development to insure our client's parameters are met.
- WYK's principals engage and manage the entire project team, from concept through occupancy. WYK Associates, Inc. has an outstanding reputation for providing construction administration services along with maintaining an excellent rapport with contractors.

WYK Strives to Design More than Just Buildings & Spaces, We Strive to Design SOLUTIONS For YOUR Needs.

FINE DINING

CMS Architecture

With designs around the world, founder Chris Smith brings his love of food and cooking to the architecture world, and has created a niche in the architectural industry.

NEOCLASSICAL

John Laffey

Neoclassical design meets the high-end residential market of Long Island's East End, resulting in the area's most breathtaking homes.

TECH-SAVVY

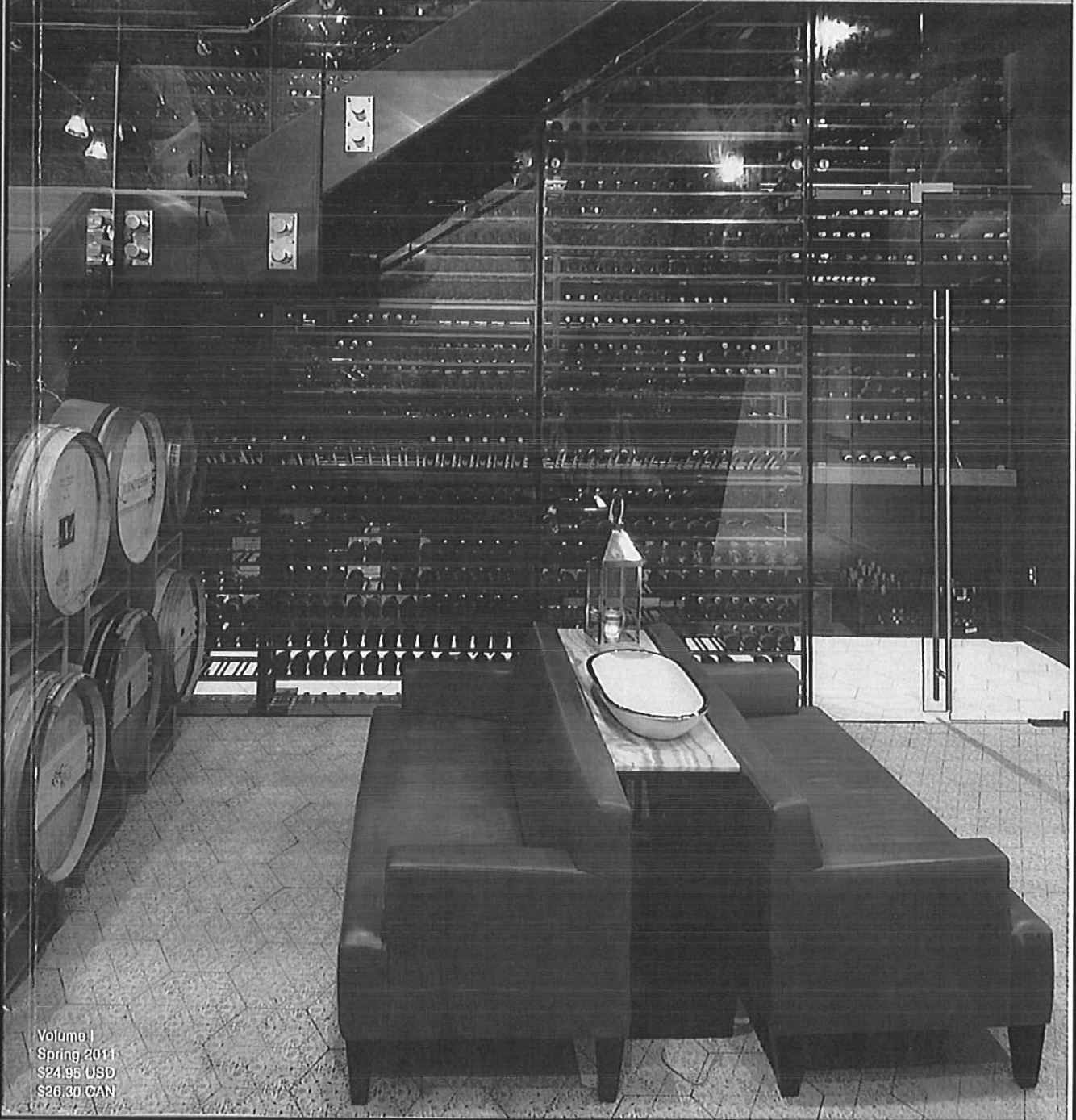
GMK Architecture

Bridging technology with the beauty of the great outdoors, this firm is focused on "bringing down the curtain" between the architect and the client.

ARCHITECTURE LEADERS TODAY

THE MAGAZINE FOR CAPTAINS OF INDUSTRY

www.architectureleaderstoday.com



Volume I
Spring 2011
\$24.95 USD
\$26.99 CAN



ARCHITECTURE



WYK ASSOCIATES

designing buildings that fit peoples' needs



by Joan Tuppeno

"Our company's roots date back to the early 1900s," said James Swiger, president of WYK Associates. "We have over 100 years of drawings in our files and archives."

With a century's experience under its belt, it's natural for a firm to have dozens of stand-out projects to showcase. Forefront in WYK's history is the West Pike Street government parking facility in Clarksburg, W.V. The project won a 2007 Merit Award from the West Virginia AIA. Now a Clarksburg hub, the multi-use pavilion hosts a variety of events, from farmers markets to weddings and private parties.

"This block within the historic district of downtown had fallen to years of blight and neglect," Swiger said. "We teamed with local architect Ralph Pedersen, for his extensive demolition and historical experience. We tore down everything but two corner buildings on the block."

Prior to demolition, the State Historic Preservation Office undertook a historical study and review of the building. The new project added underground utilities and a storm water management system.

Topping the upper level of a two-tier parking facility WYK added a translucent-paneled "band shell."

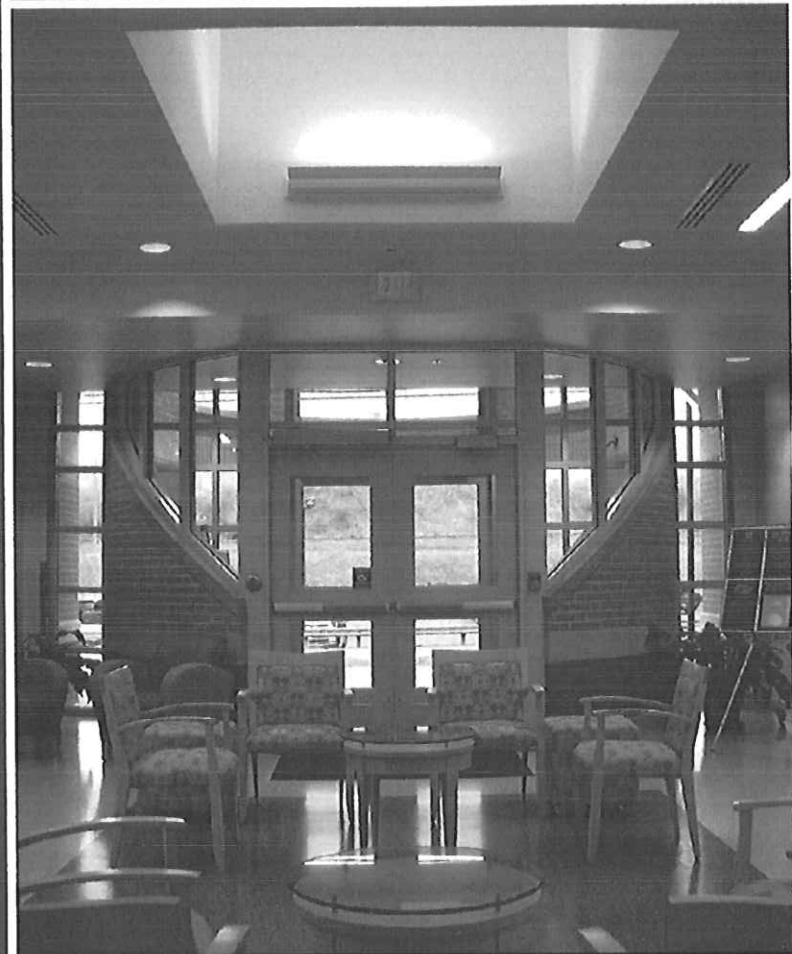
"We designed the facility in a way that the railings can be removed so the center portion to use it as a stage for public events," Swiger said.

In efforts to preserve the historic district, WYK created an inconspicuous facility design, complimentary to adjacent properties. "We used brick and limestone so it blended," he said. "We also used stamped asphalt paving to create a brick pattern in the driving aisles."

During WYK's design phase, the firm helped the city see the project as more than just a parking garage. "As discussions went further it was determined it would be more useable to create a town square atmosphere," Swiger said. "It worked very nicely."

The Christie-Cutlip Office Complex, in the prestigious Charles Pointe Development off Interstate 79's technology corridor, offers another spotlight on the company's design expertise.

THIS SPREAD: Bank of Gassaway. Natural daylight at the drive-thru canopy provides same level of detail to vehicular users as walk-up customers inside the building. The lobby of the bank features a unique brick entry "cylinder."



THIS SPREAD. West Pike Street Parking Facility. The facility was recently named Jackson Square in honor of Stonewall Jackson, whose birthplace was located directly behind. The structure serves multiple functions and fits in nicely with the historic fabric of downtown.

This two-story, 12,000 sq. ft. office complex, completed in 2007, was one of Charles Pointe Development's first erected buildings. Prominent along the skyline, the complex is highly visible from the Harrison-Marion Airport and Route 279 connector to the airport. "The client wanted a building that was timeless in character; something that would endure, with quality materials and design," Swiger said. WYK's durable designs incorporated large glass expanses around the arched entrance.

"We wrapped the building with two bands of brick detailing, using different colors and patterns," Swiger said. "Inside, we used glass blocks in the stairwell to create visual interest and allow natural daylight to come into the space."

The firm also designed a clock tower for the building, to add to its prominence. "It also functions to provide the time for everyone in the development," Swiger said.

Charles Pointe's complex includes many green elements, such as large overhangs to provide shade in summer and to harness the sun's warmth in winter. All offices in the building have operable windows for natural ventilation.

"We used high-efficiency lighting throughout the project," Swiger said. "The ceilings had high acoustic values to prevent sound transfer from one office to another."

Dark-tinted windows were used to reduce solar heat gain during the summer and to create privacy from the outside. "It also made the detail of the window stand out more by having a dark glass," Swiger said, noting that the green

CONTRACTING ENGINEERING CONSULTANTS

CEC congratulates James Swiger and WYK Associates on their achievements. The WYK and CEC team enjoys an ongoing working relationship. CEC is a structural and miscellaneous AISC steel fabricator using a state-of-the-art 3-D modeling system and CNC automated fabrication equipment. They provide quality, on-time sequenced deliveries throughout the eastern states. For more information on CEC, please visit www.cecsteel.com

BELDEN BRICK

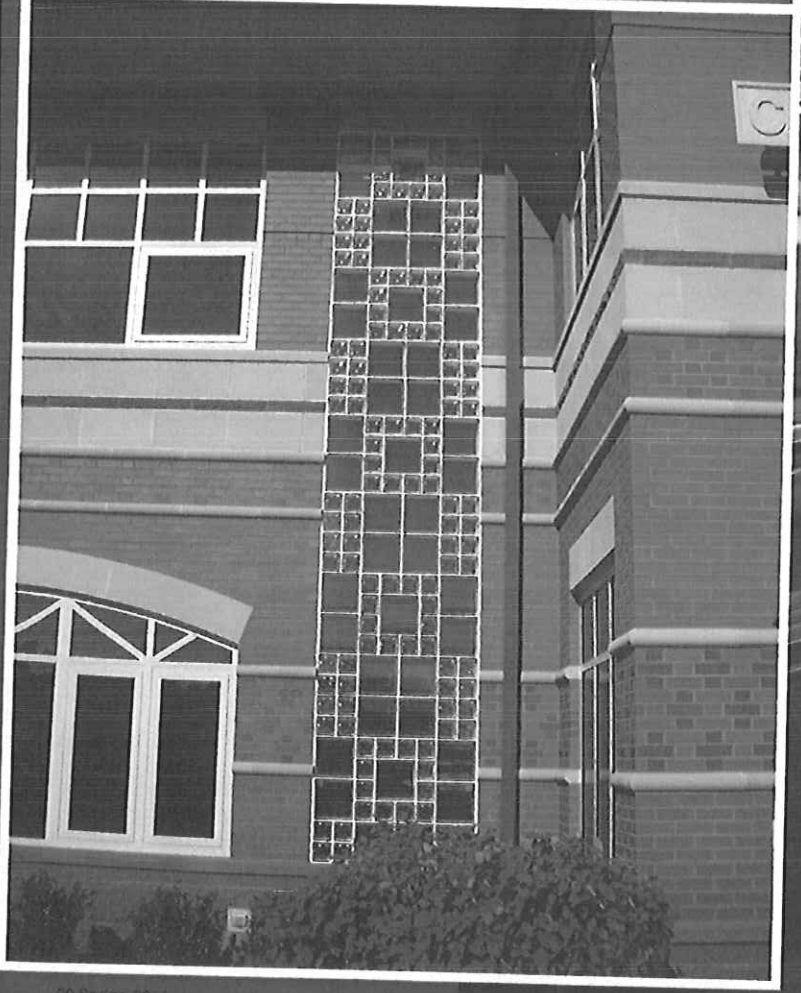
Belden Brick, a nationally recognized leader in brick manufacturing since 1885, is proud to offer an extensive line of face brick and clay brick pavers. Belden's products are long-lasting because of their durable nature and fade-resistant color. They deliver a permanence that remains unmatched by any other building material. Belden products have an outstanding reputation for performing well under the most demanding of climates and conditions. Belden has a product that is sure to add beauty and elegance to any style of architecture. With hundreds of colors, sizes and textures to choose from, you won't have to compromise aesthetics for durability.

88 Spring 2011





We designed the facility in a way that the railings can be removed on the center portion so it can be used as a stage for public events.



Our company's roots date back to the early 1900s. We have over 100 years of drawings in our files and archives.

design also carried over to the parking lot. "The light fixtures shine straight down on the parking surface so they don't allow light pollution."

When it came to complex's flooring, WYK utilized terrazzo tile with 70 percent recycled content. The building's design also included two outdoor decks on the second floor and a patio off the ground level.

"It was a fun project to work on," he said. "The owners really wanted to do things right. We spent special attention to detail."

Not all projects are easy from the start. Swiger recalls the challenges faced in designing a new branch of The Bank of Gassaway. The bank had to be built on a commercial strip, highly visible from I-79, including a McDonald's, an antique mall and a car dealership.

"They needed a building that would stand out within the context of the commercial strip," Swiger said. "They wanted a very unique building that would be identifiable as a bank during day and night."

Since many of the strip's buildings were metal or painted brick, WYK designed an attractive brick façade for The Bank of Gassaway. "It was

a nice use of materials and colors," Swiger said. "There are a couple historic towns a few miles away, so we pulled some details from those and put them into the building."

WYK used different colors of brick and stone in the project and installed large translucent skylights over the drive-thru and in the lobby. "We were trying to make a strong connection with the vehicle and the building," Swiger said. "We created natural light in the drive-thru so it doesn't feel closed in."

The design also included a very distinct entry "cylinder" that gives the impression of strength and security from the exterior. The light-flooded lobby is centered on axis with the vault. "When you walk in, the first thing you see is the vault," Swiger said. "It makes a statement of permanence and security. We wanted to play up the presence of the vault."

WYK also utilized green features in The Bank of Gassaway project, including a high-valued insulation on roof and walls, long overhangs, carpeting and floor finishes with recycled material, and paperless drywall to reduce mold. The firm also used high-efficiency lighting through-

out the building with dimmable switching in each office. "We used high reflective acoustic ceiling tile that reflects light off the ceiling," Swiger said. "It also reduces the chance of glare. It's a more comfortable lighting."

Beyond design specifics, the firm surmounted the site's size challenges. "It's a tight site," Swiger said. "We wanted to allow room for landscaping and to have some tie-in to the setting. I think we were able to do that by making a very efficient floor plan."

In the end, WYK satisfied its clients desire to stand out along its commercial strip. Over The Bank of Gassaway's main entrance, WYK added a clock, harkening to the banks of yesteryear. "The clock can be seen from the interstate," Swiger said. *ALT*

THIS PAGE: The Christie-Curtis Building. An assemblage of traditional materials are detailed to reflect the rich architectural heritage of the region. The project features intricate brickwork and beautiful glassblock.

Photos courtesy of WYK Associates

BELDEN

THE BELDEN BRICK COMPANY

Belden

With more than 125 years of experience the Belden Brick Company has set the standard of comparison.



STANDARD OF COMPARISON

Belden Brick continues to meet your needs by creating new colors, sizes, textures, and special shapes. Belden Brick manufactures more than 20 different sizes of face brick and clay pavers, more than 300 colors, 10 different textures and hundreds of special shapes.

The Standard of Comparison since 1885

www.beldenbrick.com

info@beldenbrick.com

Phone: (330) 456-0031

Fax: (330) 456-2694

700 West Tuscarawas St. Canton, OH 44702

An ISO 9001:2008 Registered Quality Management System

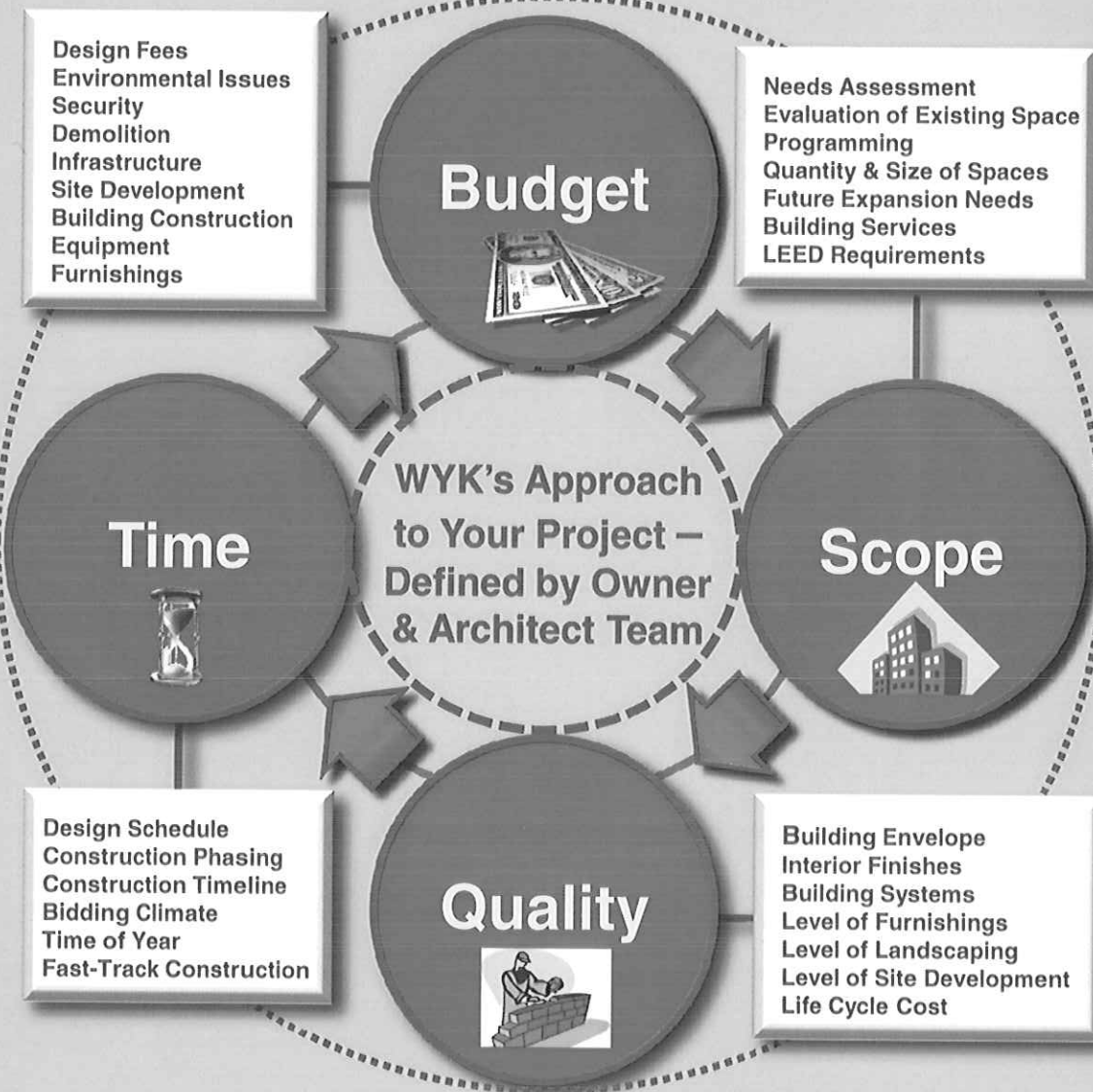




WYK ASSOCIATES, INC.
ARCHITECTURE · PLANNING

WYK's Approach to Your Project
The Coal Heritage Discovery Center

Construction – Checks & Balances.....



.....A Change In ANY ONE Alters the Others



WYK ASSOCIATES, INC.
ARCHITECTURE · PLANNING

Renovation & Adaptive Reuse Projects

WYK Associates, Inc.



Vienna Public Library
Vienna, WV

United Summit Center Day Treatment Center 2012 \$240,000
Contact: Jeffrey L. Pritchard, Director of Operations
(304) 623-5661

Vienna Public Library 2011 \$110,000
Contact: Alice Thomas, Director
(304) 295-7771



ARC Office
Clarksburg, WV

Health Access 2010 \$300,000
Contact: James A. Harris, Executive Director
(304) 622-2708

Fairmont State University 2006 - 2011 \$1.2 Million
Contact: Stephanie Slaubaugh, Construction Project Manager
(304) 367-4861



Health Access
Clarksburg, WV

Pocahontas County Courthouse 2009- Present \$1.5 Million
Owner: Pocahontas County Commission
Contact: Melvin Martin, Safety Director
(304) 799-3985

Antero Resources 2012 \$175,000
Renovating two office buildings.
Contact: John Giannaula, Director of Administration
(303) 357-6809



Harrison County Senior
Citizens' Center
Clarksburg, WV

ARC Office 2007 \$150,000
Renovate a 2,500 sf former computer center for offices with ADA compliant toilets and entries and an upgraded façade
Owner: Association of Retarded Citizens, Clarksburg, WV
Contact: Al Wiggins, Project Manager
(304) 624-3641, Ext 110



Wound Center for UHC
Bridgeport, WV

North View Fire Substation 2007 \$600,000
Renovate an existing gas utility company's pre-cast concrete service center for a training facility with updated men's and women's toilet/shower facilities, kitchen, mechanical and life safety systems plus a 12 x 60 pre-engineered addition to contain the city's disaster response equipment and to house a substation with 3 apparatus bays and a wash bay.
Owner: City of Clarksburg, WV
Contact: John Keough, Clarksburg Fire Chief
(304) 624-1669 Ext 101



WYK ASSOCIATES, INC.
ARCHITECTURE • PLANNING

Renovation & Adaptive Reuse Projects

WYK Associates, Inc.



Bridgeport Public Library
Bridgeport, WV



Dominion Exploration
and Production
Jane Lew, WV



North View Fire Station
Clarksburg, WV



Dixon & Hughes, Inc.
Clarksburg, WV

Allegheny Power System – Robinson Building 1999,2000,2001 \$800,000
Three phases of renovations to convert warehouse space for offices, employee's shower and locker room, upgrade electrical, HVAC and data systems, and provide accommodations for current accessibility standards.
Owner: Allegheny Energy, Parkersburg, WV
Contact: Bob Shaver, Superintendent of Building Maintenance
(304) 367-3263

Dominion Appalachian Development 2000 \$400,000
Conversion of existing 7400 sf National Guard Facility into ADA compliant offices, connected by a covered walkway to their existing office building, including façade renovation to match the structures.
Owner: Dominion Appalachian Development, Inc., Jane Lew, WV
Contact: Mike Hines, Manager of Supply Chain Services
(304) 884-2046

Taylor County Courthouse 1999, 1997 \$316,000
Extensive renovations of an open parking area under the building to become Magistrate's Court and ADA/building code requirements Expansion of Clerk's Record Rooms and addition of an exterior canopy.
Owner: Taylor County Commission, Grafton, WV
Contact: Nancy Fowler, County Clerk
(304) 265-1401

Harrison County Senior Citizens' Center 1999 \$340,000
Convert 5000 sf structure into offices for the adjacent Senior Citizens' Center with a connecting elevator .
Owner: Harrison County Senior Citizens' Center, Clarksburg, WV
Contact: Cynthia Freeman, CNPA, Director
(304) 623-6795

Wood County 911 Center 1999 \$300,000
Adaptive reuse of an abandoned elementary school to a modern emergency services center including offices, the 911 dispatching center and training facilities.
Owner: Wood County Commission, Parkersburg, WV
Contact: Terry Brown, Director
(304) 485-3828

Harrison County Public Safety Building 1993, 1995, 1997 \$800,000
Completed in three phases, this facility houses the 911 Center, Sheriff's Patrol facilities and offices for other related agencies, as well as, training and meeting classrooms and offices.
Owner: Harrison County Commission, Nutter Fort, WV
Contact: Harrison County Emergency Services Bureau Chief
(304) 624-8550



WYK ASSOCIATES, INC.
ARCHITECTURE • PLANNING

The Frank & Jane Gabor West Virginia Folklife Center

Fairmont State University, Fairmont, West Virginia

The Frank & Jane Gabor WV Folklife Center at Fairmont State University

Size: 6,400 S.F.

Cost: \$1.3 Million

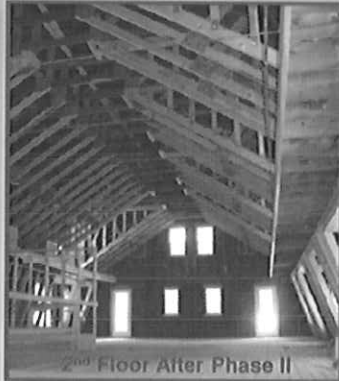
Phase I: Completed 2009

Phase II: Completed 2010

Phase III: Completed 2011

Originally a barn, this historic building is at Fairmont State University's new main campus entrance. This charming stone building has previously been used as apartments and storage. Now it is home to Fairmont State University's Folklife Program and doubles as a Visitor's Center to the campus.

By removing the third floor and gutting the second floor plan, WYK designed a two story daylighted gallery space on the existing second floor. Remedial structural repairs were needed to brace the existing roof structure once the third floor was removed. The first floor houses offices, classrooms and informal gathering spaces. An elevator, replacement of 72 windows/doors, natural and specialized lighting, sprinkler system and HVAC systems have all been integrated into this structure. By marrying the historic character of the building with upscale contemporary features and educational elements, this Folklife Center will welcome alumni, students, faculty and the general public to share many public functions for years to come.



2nd Floor After Phase II



2nd Floor Before



THIS PROPERTY HAS BEEN
PLACED ON THE
**NATIONAL REGISTER
OF HISTORIC PLACES**
BY THE UNITED STATES
DEPARTMENT OF THE INTERIOR





WYK ASSOCIATES, INC.
ARCHITECTURE • PLANNING

Pocahontas County Courthouse Renovations

Marlinton, West Virginia

Pocahontas County Courthouse Renovations

Size: 42,000 S.F.

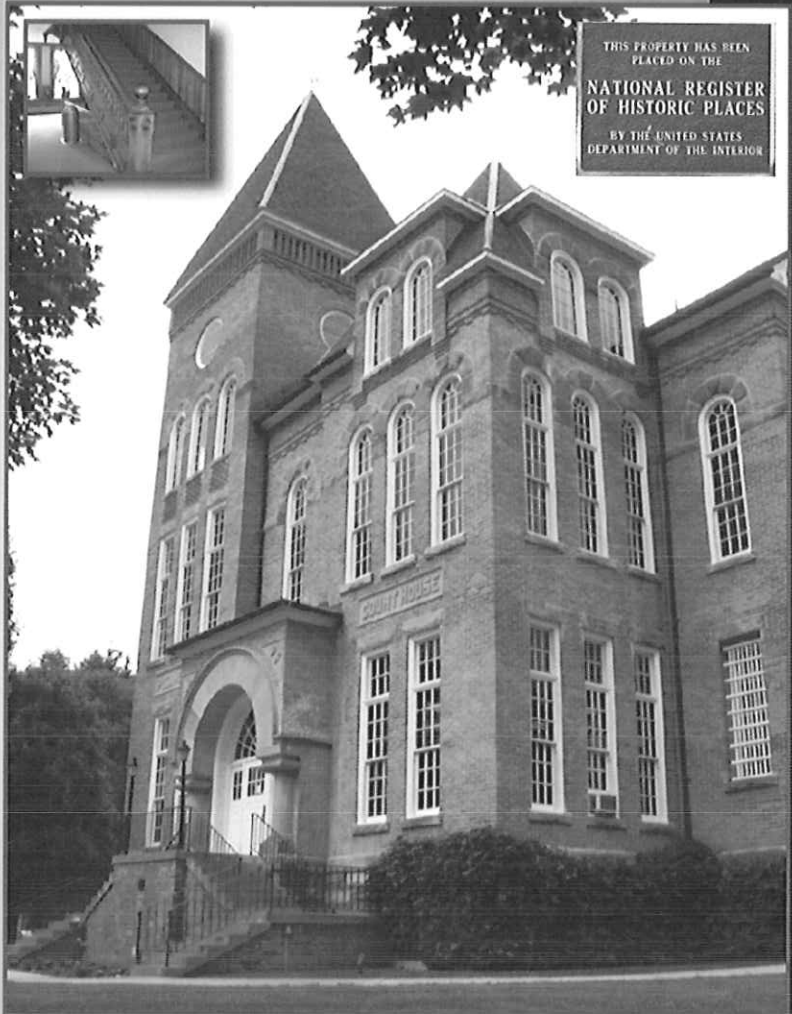
2009-2010

Estimated Cost: \$1.8 million

The Pocahontas County Commission first hired WYK & Dan Wiley Associates, Inc. to provide a needs assessment and evaluation of all the county's owned and leased administrative buildings, a total of five structures.

From the assessment / evaluation process, the commission opted to have WYK eliminate an existing stair wheelchair lift and install an elevator within the existing courthouse, replace a roof to a 1973 annex and install a new boiler in the old Sheriff's Residence/Jail Building. WYK is currently in the construction administration phase of lighting upgrades to the entire courthouse. WYK assisted the county with an application for additional state Energy Grant funding earmarked for courthouses.

Upon completion of replacing the roof, which had a metal roof installed over a built up roof installed over the original built up roof, the new roof provides positive drainage, proper overflow drains and most importantly, the new insulation is keeping the interior much warmer, thus reducing operation expenses.





WYK ASSOCIATES, INC.
ARCHITECTURE • PLANNING

Morgantown Depot Renovation Morgantown, West Virginia

Morgantown Depot Renovation

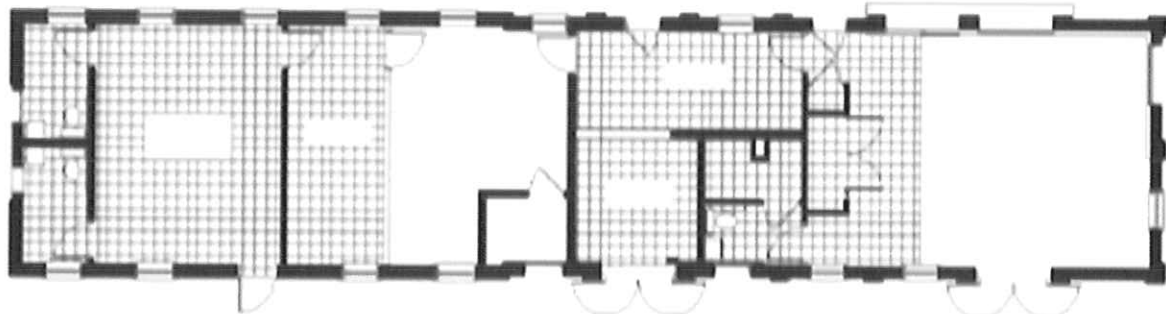
Located in Morgantown Wharf and Warehouse Historic District – National Register

Size: 2,000 S.F.

Long vacant and deteriorated, this building has now been renovated to become the cornerstone in the revitalization effort for the Riverfront District in Morgantown, WV. Part of a \$530,000 project including development of a rail trail and waterfront park, the Depot has been returned to its transportation heritage by serving as operations center for Mountain Line Transit. Filling the high demand for meeting space, the building accommodates local organizations with a meeting room and kitchen facility. As a trail head, the Depot offers parking and seasonal concessions for hikers, bikers and locals. The building is also located in the hub of the riverfront amphitheater and rail trail.

Main Street West Virginia

*Best Interior
Rehabilitation
Award 1998*





WYK ASSOCIATES, INC.
ARCHITECTURE · PLANNING

Gassaway Depot Gassaway, West Virginia

Gassaway Depot

Depot Size: 6,300 S.F.

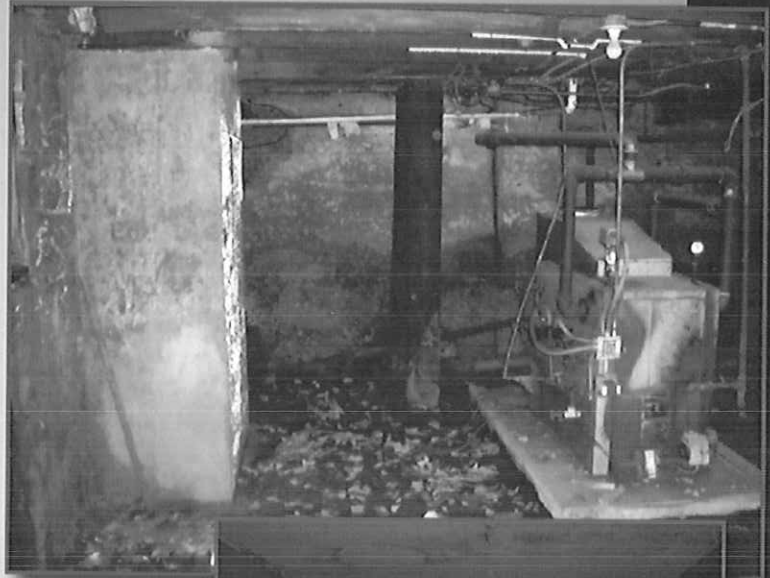
WYK Associates was recently obtained by the Town of Gassaway to assist with securing the building envelope of this Historic early 20th Century building, after they obtained a grant from the West Virginia Department of Transportation. WYK has made site visits to the site and has documented the existing conditions. The bid documents are currently in the design phase for this work. The project will bid this summer and it is the intent to have the construction work completed by the end of summer.

This two story structure has had many decades of neglect. Years of water infiltration through the basement walls has deteriorated secondary interior load bearing walls.

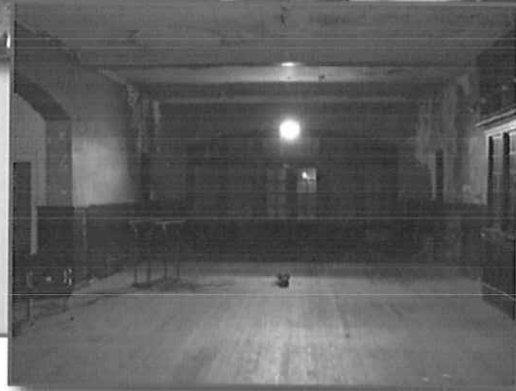
The intended use for this adaptive re-use project is to have a town museum on the second floor and use the first floor for civic events.

The Town of Gassaway and the Park Commission recently upgraded the City Park immediate adjacent to this structure. These two Civic Spaces will work harmoniously together forming a strong central hub for this quaint little town as well as instill a sense of community pride back to this once bustling sector of town.

This project will be completed in multiple phases as funding becomes available through public and private donations alike.



THIS PROPERTY HAS BEEN
PLACED ON THE
**NATIONAL REGISTER
OF HISTORIC PLACES**
BY THE UNITED STATES
DEPARTMENT OF THE INTERIOR





WYK ASSOCIATES, INC.
ARCHITECTURE · PLANNING

Salem Trailhead Park and Depot Salem, West Virginia

Salem Trailhead Park: 1996
Depot Fire Restoration: 2009
(Fundraising Ongoing)

Contributing Building –
Salem Historic District-
National Register

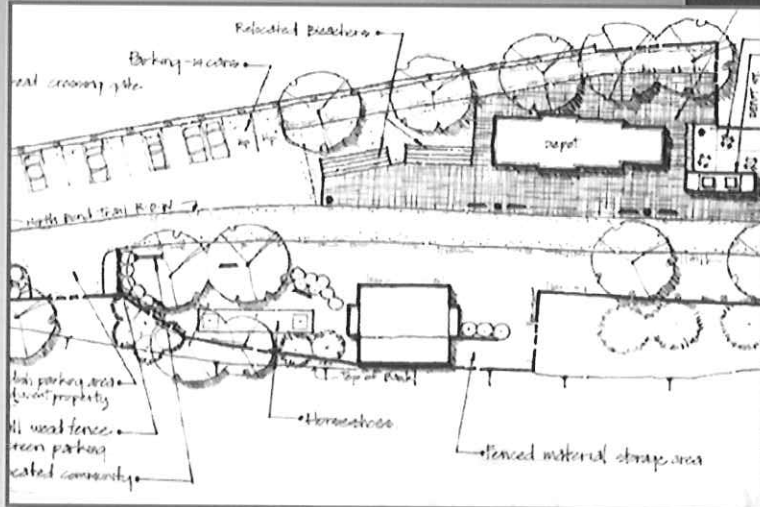
Depot Size: 3,000 S.F.

WYK Associates provided architectural services for a project to organize a variety of use areas connected to a reclaimed historic train station in downtown Salem.

The intent of the design was to create an activity center, using the station area for a park trailhead, when not in use for special events and festivals. During these times the park had to be flexible enough to convert into entertainment, dining, seating, and exhibition areas, and still serve as a trailhead for the North Bend Rail Trail.

Use areas were arranged to allow for easy circulation and interpretive value of the restored train station. Views were maintained into downtown and undesirable views of adjoining residential areas were screened.

WYK did extensive research for the exterior restoration and came up with a unique design for the interior adaptive re-use of this 1912 structure, fire gutted a majority of the building in November of 2008 and the City of Salem selected WYK to bring this historic structure back to its former 1912 glory. The interior will be renovated to meet ADA requirements and will be utilized for multiple civic functions such as a library, special dinners, meetings and small concerts.





WYK ASSOCIATES, INC.
ARCHITECTURE · PLANNING

Central Fire Station Clarksburg, West Virginia

Central Fire Station

Size: 9,700 S.F.

Completed:

Upgrades: 2003
Entry Enlargement: 1974
Originally Built: 1927

Original Architect:

E. J. Wood & Son, Inc. –
(Predecessor of WYK)

**National Historic Register:
1982**

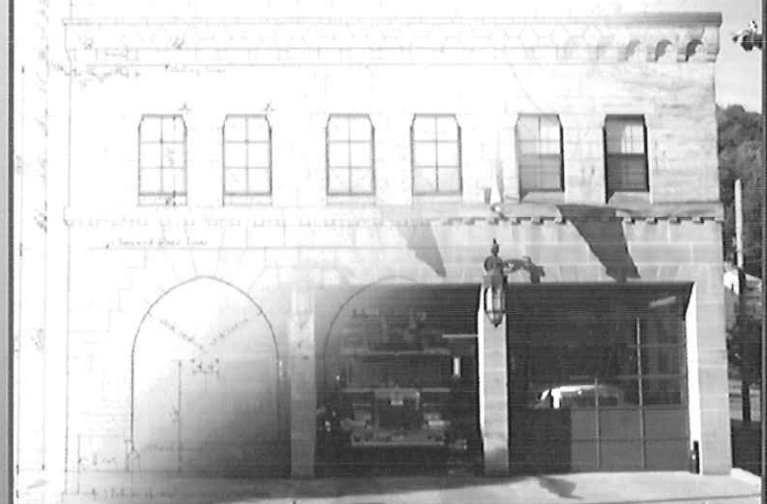
The historic Central Fire Station has been renovated by WYK on two occasions and was originally designed by Carleton Wood's grandfather. In 1974 we modified the gothic arch entrances to the apparatus bays to accommodate larger equipment. This effort involved procuring stone from the original quarry to assure a good match with the original construction.

In 2003 we designed a renovation project which cleaned, secured and made minor structural repairs to the historic exterior. Interior work added a training room, exercise room and fire escape. The apparatus room floor was lowered to resolve drainage problems and assure access for even higher equipment.

The lower photograph here reflects the changes that were made to the apparatus entry by our firm in the mid 1970's to accommodate a variety of larger fire fighting vehicles.



1927 Original Drawing.....Withstanding the Test of Time.....Present Day





WYK ASSOCIATES, INC.
ARCHITECTURE • PLANNING

Barbour County Courthouse Philippi, West Virginia

Barbour County Courthouse

Original Architect:

J. Charles Fulton

Built: 1903-1905

2003: Conversion of Former Jail Area to Office Space.

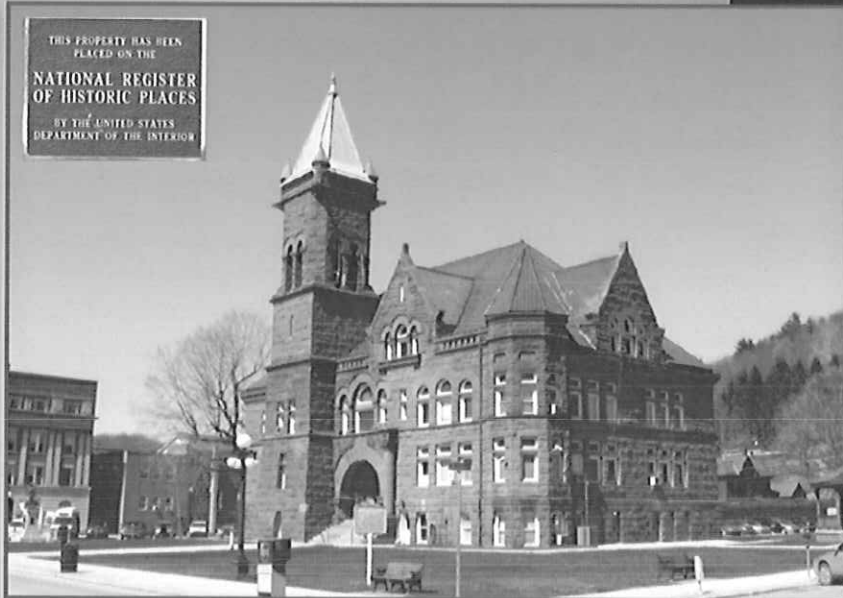
2005: A.D.A. Accessibility

2009: Front Steps / Entry Restoration

This monumental public building was designed in 1901 by Architect J. Charles Fulton of Pennsylvania. It personifies the then fashionable Romanesque Revival style. Of solid masonry construction this two-and-one-half story modified rectangular structure is set upon a raised basement. An unusual sense of weight and mass is conveyed by a colossal offset tower and by additional prominences in the form of steeply pitched wall dormers and an octagonal turret. The floors are concrete reinforced with iron. The building's finish is magnificent coursed quarry-faced ashlar of striated Cleveland Sandstone.

Maintaining the integrity of both the design and construction of this notable building was paramount to the Barbour County Commission. Renovations to the offices of the Sheriff, Prosecutor, and Assessor accommodated the new technology and lighting requirements their work requires. Both the public and courthouse staff are now served by an elevator, accessible interior routes through the building, increased security and an exterior ramp.

The deteriorating front stairs and entry tiles were carefully redesigned by WYK to bring this grand entrance back to its previous grandeur.





WYK ASSOCIATES, INC.
ARCHITECTURE • PLANNING

Circleville School Pendleton County, West Virginia

Circleville School

Size: 66,000 S.F.

Working with a variety of funding sources, the non-profit CHS Preservation Inc. contacted WYK Associates to help them maintain this landmark in their community as a safe and attractive center for group activities. Within a tightly defined construction schedule, the building's life safety and electrical systems were upgraded to current code requirements. A new banquet kitchen was installed. And the exterior woodwork was repaired and repainted using the guidelines and assistance of the State Historic Preservation Office.

Funded by the Works Progress Administration, this Circleville School was constructed in 1938 to replicate a 1929 Georgian Revival-style building, which had been destroyed by fire. Its classically-derived main façade features four pilasters, a pediment, and a domed cupola. A broken pediment with urn-and-swag motif above a fanlight decorates the main double-door entrance. Enlarged wings and several rear additions expanded the 1938 facility from the 1929 plan. Circleville School was closed in 1998, as the County's schools were consolidated. Yet today Holmboe's building remains a focal point for this Pendleton County community.

Original Architect:

Earnest Christian Schebel
Holmboe

**National Register of Historic
Places: April 4, 2000**



THIS PROPERTY HAS BEEN
PLACED ON THE
**NATIONAL REGISTER
OF HISTORIC PLACES**
BY THE UNITED STATES
DEPARTMENT OF THE INTERIOR





WYK ASSOCIATES, INC.
ARCHITECTURE · PLANNING

Recent Architectural Awards American Institute of Architects – West Virginia

Information Manufacturing Corporation (I.M.C.) Cowen, West Virginia

Size: 18,000 S.F.

With Sponsorship from Senator Robert C. Byrd, the Webster County Development Authority commissioned this “state of the art” facility to house Information Manufacturing Corporation’s regional operations. The important notion of sustainability is addressed through use of recycled steel, regional materials, and an innovative geothermal heat pump heating and cooling system.

West Union Bank- Newpointe Clarksburg, West Virginia

Size: 9,000 S.F.

The design uses a combination of glass curtain wall with brick and monumental masonry units to present a very contemporary image. Because of the building orientation, the glass elevations require the use of solar glazing and a brise soleil system to reduce heat gain and glare in the offices.

West West Pike Street Parking Facility Clarksburg, West Virginia

Size: 57,000 S.F.

The facility’s design complements all the adjacent properties, both historic and modern. A variety of outdoor activities are easily held here, enhancing the city’s economy and livability. Designed by Associated Architectural Consultants, PLLC, which is a combination of Ralph Pedersen Architect & WYK Associates, Inc.



2007 AIA-West Virginia -
Merit Award for Design Excellence and
Sustainable Design



2007 AIA West Virginia
Merit Award for Design Excellence



2008 AIA West Virginia –
Merit Award for Design Excellence





WYK ASSOCIATES, INC.
ARCHITECTURE • PLANNING

A Sampling of Recent Renovation Projects

WYK Associates, Inc.

- 2012** **United Summit Center – I/DD Day Reporting Center** – New instructional facility
Pocahontas County Courthouse – Lighting Upgrades
Lewis-Upshur Vietnam Museum – Addition
- 2011** **Dyer Insurance** – Exterior Renovation / Window Replacement
Pocahontas County Courthouse – Elevator / ADA Accessibility
Fellowship Bible Church – Addition / Renovations
Vienna Public Library – Entry Renovations and Addition
Fairmont State University Folklife Center – Phase III
Robert L. Bland Middle School Field House - Ceiling and Lighting Upgrades
- 2010** **Stockmeier Urethanes** – Warehouse Addition and Loading Dock
Harrison County Schools – Doors, Frames & Hardware Replacement – Phase 5
 Bridgeport High School, South Harrison Middle School, South Harrison High School
 and United Technical Center
Health Access Offices – Addition and Renovations
Antero Resources – Offices in Leased Space , new lighting and finishes at Willow Beach, WV
Davis Thomas Elementary School – HVAC Renovations, Elkins, WV
Fairmont State University Folklife Center – Phase II-Offices, Rest Rooms, etc.
Salem International University – Nursing Labs Expansion
Pocahontas County Courthouse - Elevator and Renovations, Roof Replacement at
Courthouse Annex, Boiler Replacement at Sheriff's Office and Jail
West Virginia University's Boreman Hall – Shower Room Renovations
United Hospital Center's CCCC Building – Office Renovations on 3 Floors
Lewis County Schools – Robert Bland Middle School Field House Upgrades
Harrison County Schools – Big Elm Elementary Roof Replacement
- 2009** **Harrison County Schools** – Doors, Frames & Hardware Replacement – Phase 4
 Adamston Elementary School, Bridgeport Middle School, Liberty High School,
 Lincoln High School, Lumberport Middle School, Nutter Fort Intermediate School
VA Medical Center – Audiology Task Lab, Clarksburg, WV
VA Medical Center – Dental Lab, Clarksburg, WV
Fairmont State University Folklife Center – Phase I – Exterior Stabilization
Woodrow Wilson High School – HVAC Renovations, Elkins, WV
Biometrics Center – HVAC Upgrades, Clarksburg, WV
Harrison County Schools – **West Milford Elementary**; Fascia Replacement and
 United Technical Center Shop Wing; Roof Replacement
- 2008** **Harrison County Schools** – Doors, Frames & Hardware Replacement
United Technical Center – Roof and Fascia Replacement
VA Medical Center – IT Room Renovations
Barbour County Courthouse – Entry Renovations
Harrison County Schools – **Adamston Elementary School**; Windows, **Gore and Liberty**
 Schools; Concrete, **WI Middle School**; Flooring
Elkins Middle School – Complete Systems Renovation
- 2007** **VA Medical Center** – Southwest Entry Renovation, Sixth Floor Solarium Renovation,
 Northwest Entrance and Multi-Purpose Room, Canteen Building and Patio
 Drainage Renovations, Second Floor Laboratory Renovation
VA Medical Center – Canteen Building and Patio Exterior Drainage Renovations,
 Second Floor Laboratory Renovation
Lincoln High School – Heating, Ventilation and Cooling Renovation
VA Medical Center – Complete Facility Electrical Renovation



WYK ASSOCIATES, INC.
ARCHITECTURE • PLANNING

Harrison County Office of Emergency Management & Harrison-Taylor 911 Center
Clarksburg, West Virginia

Harrison County Office of Emergency Management & Harrison-Taylor 911 Center - Spatial Needs Assessment

Estimated Start Date:

August 2012

Estimated Cost: \$8 Million
Size: 20,000 G.S.F.

The new 911 facility's design will be based off the programming / space needs assessment previously prepared by WYK/Redstone dated August 1, 2011. The 20,000 S.F. structure will be either one or two story.

"Green" design concepts, with a payback of 15 years or less, will be utilized.

WYK/Redstone was awarded the Harrison County 911 Center project in March 2012, after interviewing before a panel comprised of the Harrison Officials appointed by the Commission & members of the 911 Center.

PRELIMINARY SPATIAL NEEDS ASSESSMENT FOR THE HARRISON COUNTY OFFICE OF EMERGENCY MANAGEMENT & HARRISON-TAYLOR 911 CENTER

AUGUST 1, 2011

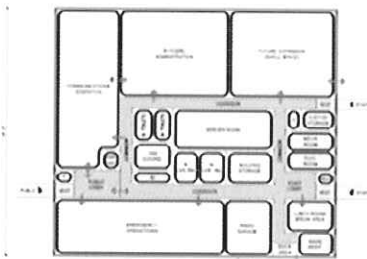
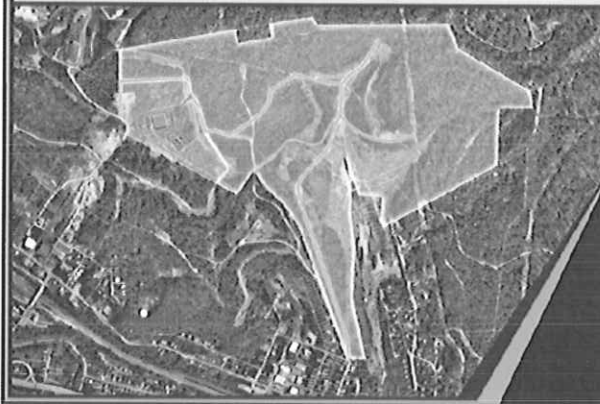
HARRISON COUNTY BUREAU OF EMERGENCY SERVICES **HARRISON-TAYLOR 911 WV**



WYK ASSOCIATES, INC.
ARCHITECTURE • PLANNING



REDSTONE ARCHITECTS, INC.
Architecture • Planning • Interiors Design



OPTION 1
ONE-STORY BUILDING



LOWER LEVEL



UPPER LEVEL

OPTION 2
TWO-STORY BUILDING

HARRISON COUNTY EMERGENCY SERVICES PROPOSED 911 CENTER



FLOOR BLOCK DIAGRAMS



WYK ASSOCIATES, INC.
ARCHITECTURE · PLANNING

Immaculate Conception Parish Center Clarksburg, West Virginia

Parish Center:

Immaculate Conception Church

Bidding: June 2012

Estimated Cost: \$2.7 Million
Size: 10,000 G.S.F.

This new parish center is to be located directly behind the Immaculate Conception Church in Clarksburg. This facility will house the church offices, a large banquet room with a capacity of 350, commercial kitchen, meeting spaces and smaller, intimate gathering spaces.

The center spine of the building is very spacious and is capped with translucent panels which will flood the interior spaces with natural light.

Located in a transition point on Main Street between commercial and residential neighborhoods, the exterior will feature masonry to compliment the existing church as well as a roof with a tile appearance. The size and massing of the building pulls from both the church elements as well as surrounding houses to offer a smooth transition within the historic fabric of the street.

The porte cochere will provide users with a welcoming and safe haven from the elements of Mother Nature. Landscaping will anchor the building to its surroundings and offer a sense of calm and serenity.





WYK ASSOCIATES, INC.
ARCHITECTURE · PLANNING

Shinnston Community Building

WYK Associates, Inc.

Shinnston Community Building Shinnston, WV

Estimated Start Date:
Fall 2013

Projected Cost:
\$5.5 million

This is a two phase project where the City of Shinnston hired WYK for the design of entire project with the first phase being the design and renderings. This information is being used by the city to present to various funders and grantees for funding of the project.

Welcoming residents and visitor alike, the Shinnston Building will stand sentinel at the entrance to the historic downtown area. Embracing Shinnston's rich heritage and history, the building meets the needs of the city in the twenty first century.

This two story, 18,000 S.F. structure will house city government office on the upper floor along with a spacious council chambers doubling as a large conference area.

The first floor will feature a large banquet room capable of comfortably seating 375 persons, a commercial kitchen and a dedicated space for the city's senior citizen organization. A community meeting space is also designed into the plan. This facility will utilize low maintenance materials throughout.





WYK ASSOCIATES, INC.
ARCHITECTURE · PLANNING

**James B. Swiger, AIA, NCARB,
LEED AP**
President & Principal-In-Charge



EMPLOYMENT SUMMARY

WYK Associates, Inc.	2005 - Present
Blackwood Associates, Inc.	2000 - 2005
Gegner Architects	1997 - 2000
WYK Associates, Inc.	1996 - 1997

EDUCATION

Bachelor of Architecture - 1996
University of Tennessee
Knoxville, Tennessee

ARCHITECTURAL REGISTRATION

West Virginia	(Registration # 3640)
National Council of Architects	(Registration #58982)

PROFESSIONAL AFFILIATIONS

American Institute of Architects
AIA-West Virginia – Director 2010 – Board of Directors
U.S. Green Building Council Accredited Professional
National Council of Architectural Registration Boards
National Trust for Historic Preservation
National Fire Protection Agency (NFPA)
Builder's Supply Association of WV - Affiliate Member
WV Society for Healthcare Engineering - Associate Member

CIVIC AFFILIATIONS

United Way of Harrison County, Inc. – Board of Directors
Kiwanis Club of Clarksburg – 2008/2009 President
Clarksburg Elks Lodge
Salem International University Auxiliary
Salem Area Chamber of Commerce
West Virginia Kiwanis District – District 3 – Past Lieutenant Governor
Harrison County Chamber of Commerce - Education Committee
Salem Elementary School Nature/Fitness Trail – Project Manager

HONORS & AWARDS

2010-11 Cambridge Who's Who Honored Member
2009 WV Kiwanis District Governor's Award for "Promoting Membership Growth"
2008 Volunteer of the Year – Harrison County Chamber of Commerce
Selected "Generation Next: 40 Under 40" by the West Virginia State Journal in 2008
2008 Strathmore's Who's Who Worldwide Recipient
2008 Merit Award in Architecture from AIA-West Virginia for the
West Pike Street Parking Facility in Clarksburg, WV (Co-Design Architect)

Selected Projects

**Pocahontas County
Courthouse**
•Partial Roof Replacement
•ADA Upgrades
•Elevator Addition
Marlinton, WV

**City of Ripley Municipal
Building**
Ripley, WV

**West Pike Street Parking
Facility in Historic District**
Clarksburg, WV

***Historic Renovations to
Carskadon Mansion**
Keyser, WV

***Historic Renovations to
Waldomore for
Clarksburg-Harrison
Public Library**
Clarksburg, WV

*Denotes Prior Experience



WYK ASSOCIATES, INC.
ARCHITECTURE · PLANNING

Stephen M. Kelley, Associate AIA
Project Manager



EMPLOYMENT SUMMARY

WYK Associates, Inc.	2007 - Present
Blackwood Associates, Inc.	2002 - 2007
Kurtz Construction	1999 - 2001
Philadelphia University Athletic Department	1996 - 2000
Eagle Lodge Golf and Conference Center	

EDUCATION

Bachelor of Architecture - 2000
Philadelphia University
Philadelphia, Pennsylvania

PROFESSIONAL AFFILIATIONS

American Institute of Architects
AIA-West Virginia – Associate Member

CIVIC AFFILIATIONS

Salem Area Chamber of Commerce – Board of Directors
Leading Revitalization of Salem's Veteran Park
Harrison County Development Authority – Board of Directors
Fort New Salem Foundation – Board of Directors
VFW Post 9151- Trustee & Lifetime Member / Quartermaster
Salem-Doddridge County Kiwanis Club – Charter Member
Volunteer United Way of Harrison County, Inc.
“Stonewall Leadership” Contributor to the
United Way of Harrison County, Inc.

HONORS & AWARDS

Salem Area Chamber of Commerce 2006 Member of the Year
AIA-West Virginia Student Design Competition 1995 – Second Place
U.S Army Awards:
Army Achievement Medal
Reserve Component Achievement Medal
National Defense Service Medal
Global War of Terrorism Expeditionary Medal
Armed Forces Reserve Medal
Army Service Ribbon
Reserve Components Overseas Training Ribbon

Selected Projects

**Pocahontas County
Courthouse Renovations**
Marlinton, WV

**Salem Depot Restoration
(Currently in Fund Raising
Stages)**
Salem, WV

**United Hospital Center's
CCCC Building
Entry Replacement**
Clarksburg, WV

***Renovation to
Johnston School
Industrial Home of Youth**
Salem, WV

***Exterior Renovations to
Waldomore for
Clarksburg – Harrison
Public Library**
Elkins, WV

**Frank & Jane Gabor
Folk Life Center**
Fairmont State University
Fairmont, WV

* Denotes Prior Experience



WYK ASSOCIATES, INC.
ARCHITECTURE · PLANNING

Orin B. Kincade, Associate AIA
Architectural Intern



EMPLOYMENT SUMMARY

WYK Associates, Inc.	12/2011 – Present
JRS Architects, Inc.	08/2011 – 12/2011
Fairmont State University	08/2010 – 05/2011
Miami University	08/2007 – 05/2009
WYK Associates, Inc.	05/2006 – 05/2007

EDUCATION

Master of Architecture - 2010 Miami University Oxford, OH
Bachelor of Science -Architecture - 2007 Fairmont State University Fairmont , WV

HONORS & AWARDS

- 2009 AIA Ohio Foundation Grant
- 2009 AIA West Virginia Scholarship for Merit Design Award
- 2007 AIA West Virginia Jeffery Mayfield Scholarship Competition
- 2007 West Virginia Higher Education Grant
- 2005 AIA West Virginia Bachelors Design Merit Award

Selected Projects

Fellowship Bible Church
Bridgeport, WV

**City of Shinnston
Community Building**
Shinnston, WV

**I/DD Day Reporting
Center for the United
Summit Center**
Clarksburg, WV

**Mountaineer Military
Museum Addition**
Weston, WV

**Antero Resource
Corporation Offices**
Willow Beach, WV

**Notre Dame Lab
Renovations**
Clarksburg, WV



WYK ASSOCIATES, INC.
ARCHITECTURE • PLANNING

Debbie Pye, Associate AIA
Client Relations / Interiors & Acoustics



EMPLOYMENT SUMMARY

WYK Associates, Inc.	March 2012 – Present
Architectural Interior Products	January 2006 – August 2010

EDUCATION

Master of Communications
West Virginia University
Morgantown, WV

Associate Degree in Interior Design
West Virginia University
Morgantown, WV

Bachelor of Business Administration – Business & Marketing
West Virginia State University
Institute, WV

PROFESSIONAL AFFILIATIONS

AIA-West Virginia - Associate Member

National Acoustical Society of America Member – North Carolina Chapter

Selected Projects

**Bank of Gassaway
Interior Finishes**
Flatwoods, WV

**Fellowship Bible Church
Acoustical Design -
Sanctuary**
Bridgeport, WV

**Parish Center for
Immaculate Conception
Catholic Church – Interior
Finishes / Acoustical
Design**
Clarksburg, WV

***Auditorium Acoustical /
Interior Design for WVU –
Parkersburg***
Parkersburg, WV

***Nutter Fort Elementary
School – Acoustical
Design Remediation**
Nutter Fort, WV

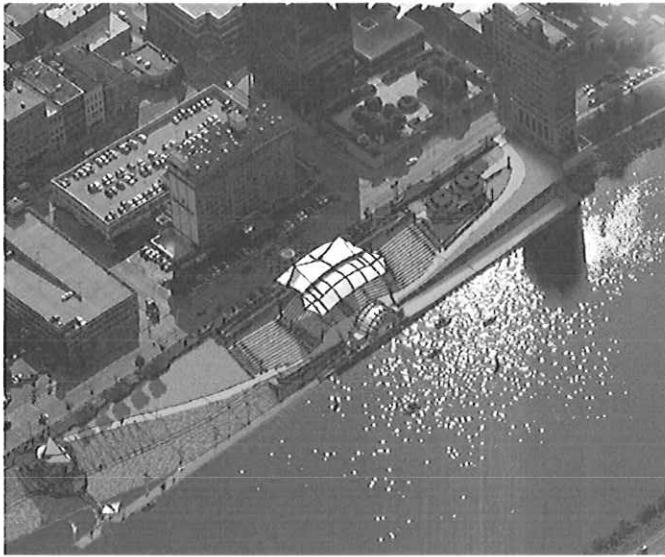
*Denotes Prior Experience

Land Development

Riverfront Park & Streetscape Design



Haddad Riverfront Park Kanawha County, West Virginia



Brief Project Description

GAI Consultants, Inc. (GAI) was selected to provide design, construction and engineering solutions for the renovation of the Haddad Riverfront Park, which is a popular concert, festival and leisure site in downtown Charleston, West Virginia.

Among the City of Charleston's project requirements were a retractable canopy to provide protection and visual interest, an overlook plaza and pavillion that extends Court Street to the Kanawha River, an extension of the lower wharf area, a new streetscape design along Kanawha Boulevard and an event stage for concerts. Each requirement composes one stage of the overall project, with Phase I currently underway.

Work Tasks/Services

- Conceptual design and master plans
- Landscape architecture
- Geotechnical engineering
- Structural engineering
- Construction administration

Value Added Innovations

Taking a different approach, GAI presented an initial design encompassing all four parts of the entire project. The design was highlighted by a grand staircase leading to the proposed amphitheater, which acts to open the park to Kanawha Boulevard, making it an integrated part of downtown Charleston.

GAI Project Manager:
David Gilmore, RLA, CLARB

Project Team:
GAI Consultants, Inc. (Prime)
Fabritech (Subconsultant)

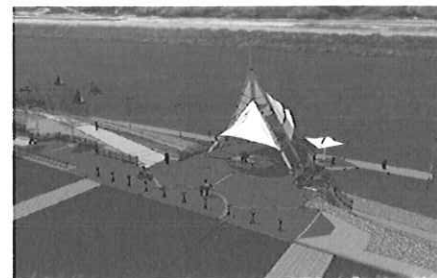
Client:
The City of Charleston

Client Contact:
David Molgaard, City Manager
304.348.8014

Construction Cost:
\$3,000,000

Completion Date:
Ongoing

#E080952



For more information on GAI Consultants, Inc., please visit www.gaiconsultants.com.

University of Pittsburgh Public Safety Building
Allegheny County, Pennsylvania



GAI Project Manager:
Patrick M. Gallagher

Project Team:
GAI Consultants, Inc. (Prime)

Client:
Strada, LLC

Client Contact:
Alan Jesse Cuteri
412.262.3800

Fees:
\$94,000

Completion Date:
December 2006

#C050452

Brief Project Description

The University of Pittsburgh's architect, Strada LLC, retained GAI Consultants, Inc. (GAI) for civil and geotechnical engineering services for the University's 6,400-square-foot three-story Public Safety Building. The building is situated on University property in the Oakland section of the City of Pittsburgh and includes a full basement and an adjoining garage and deck structure. Challenging subsurface conditions found during construction required GAI field engineers to redesign original drawings within a short timeframe.

Work Tasks/Services

- Geotechnical engineering
- Sewage facilities planning module
- Utility investigation
- Site development plans
- Erosion and Sedimentation (E&S) control plan
- Stormwater management exemption
- PennDOT Highway Occupancy Permit (HOP)
- Technical specifications
- Pittsburgh Water and Sewer Authority (PWSA) tap-in drawings

Penn Manor
Pittsburgh, Pennsylvania



Brief Project Description

GAI Consultants, Inc. (GAI) provided site planning and design services on this urban in-fill redevelopment located in Pittsburgh's East Liberty Neighborhood. The development consists of a three story 55 unit affordable apartment building.

Work Tasks/Services

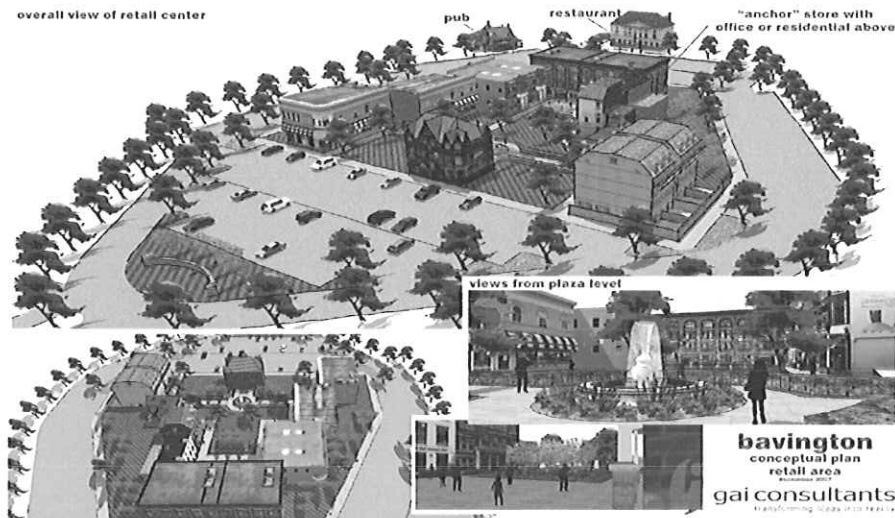
- Site Plans
- Utility Design
- Construction Services
- Public Agency Coordination
- Stormwater Management Evaluation
- Erosion and Sediment Control Design

GAI Project Manager:
Jeffrey Parobek, PE
Project Team:
GAI Consultants, Inc. (Prime)
Client:
The Community Builders
Client Contact:
Tamara Dudukovich
412.365.0665
Completion Date:
January 2008

#C030518

Bavington Property Development

Washington County, Pennsylvania



GAI Project Manager:
Jeff Parobek, PE

Project Team:
GAI Consultants, Inc. (Prime)

Client:
Homestead Resource Group, LLC

Client Contact:
Gregory Kobulnicky
304.374.0810

Construction Cost:
\$65 million

Completion Date:
2008

#C060830

Brief Project Description

GAI Consultants, Inc. (GAI) and the Homestead Resource Group worked together to develop a conceptual master plan that would transform a family farm into a traditional neighborhood development. The conceptual master plan had to ensure preservation of the property's heritage. Encompassing approximately 112 acres divided by a major highway (US 22/30) that connects Pittsburgh, Pennsylvania, to Weirton, West Virginia, and other points west, the property was developed utilizing traditional town planning principles to guide the planning process. Approximately 11 acres of the property separated from the total acreage by the aforementioned highway was identified as an opportune location for a town square-style retail development.

Work Tasks/Services

- Conceptual design
- Cost estimating
- Topographic surveying and mapping
- Conceptual grading

James A. Hemme, P.E., L.R.S.

Senior Project Manager

Education

B.S. Civil Engineering 1989, West Virginia University Institute of Technology
Marshall University Graduate College, Environmental Engineering Coursework

Registrations/Certifications

West Virginia Professional Engineer No. 12195
Kentucky Professional Engineer No. 25437
Ohio Professional Engineer No. 72851
Indiana Professional Engineer No. 10809277
Pennsylvania Professional Engineer No. 75494
New York Professional Engineer No. 85794
West Virginia Licensed Remediation Specialist No. 003

Relevant Training/Courses

OSHA 40 hour Hazwoper Training
NICET 1 Geosynthetics Installation Inspection (expired)
Nuclear Density Gage Training, DOT and NRC (expired)
MSHA Safety Training (expired)

Summary

Mr. Hemme specializes in site engineering, including planning, permitting and stormwater management, with emphasis on parks and recreation areas and streetscapes. He brings a multi-disciplinary background to projects and this enables him to see the "big picture" of what will be needed to take a project from start to finish. Mr. Hemme is also competent in geotechnical engineering, environmental disciplines including NEPA compliance, and transportation services. He has worked extensively with private developers, architects, municipalities and government agencies.

Mr. Hemme has worked on landfills, quarries, mines, industrial, and commercial sites and facilities. He has performed numerous Phase 1 Environmental Site Assessments (ESAs) providing solid waste, industrial waste, and Erosion and Sediment (E&S) control permitting. Mr. Hemme designs storm water management systems, site developments ranging from 1 acre to over 60 acres in size, and wetland mitigation areas. He prepares geotechnical reports, flood plain modeling, highway and roadway designs, right-of-way plans, detailed construction plans, and cost estimates for projects ranging from \$10,000 to over \$2 million in construction cost.

Mr. Hemme volunteered his time and knowledge to assist with preparation of the Greater Charleston Greenway Initiative by the West Virginia Land Trust Company in Charleston, West Virginia. He authored the analysis section of the report and peer-reviewed the entire document. Mr. Hemme is a current volunteer with the Riverside South Committee, which is working with the Charleston Land Trust to beautify and possibly promote pedestrian access on the south side of the Kanawha River. He has developed schematic plans and reviewed narratives for inclusion into several progress updates to the Land Trust.

Professional Experience

Civil Engineering and Permitting

- Site Design for over 100 different projects throughout West Virginia, Ohio, Kentucky and Pennsylvania. NEPA compliance for wetlands, streams, cultural resources, and endangered species. Phase 1 Environmental Site Assessments for a wide range of facilities.
- Designed over 50 stormwater management systems including run-on and run-off control utilizing ditches, berms, sumps, sediment ditches, storm sewers, culverts, drop structures, ponds, energy dissipaters, etc.

Work included technical specifications, cross sections, profiles, site grading detail development and hydrologic and hydraulic modeling.

- Prepared over 50 detailed Erosion and Sediment (E&S) Control Plans for various sites throughout West Virginia, including coal mines, quarries, highways, landfills and site developments. Work included technical specifications, re-vegetation plans, temporary control details and sequencing plans.
- Prepared numerous National Pollutant Discharge Elimination System (NPDES) Construction Stormwater Permit Applications for sites throughout West Virginia and Ohio.
- Prepared a complete set of construction plans and specifications consisting of a detailed grading plan, a storm sewer system consisting of 34 drop inlets and over 3,800 feet of piping, and parking lot layout.
- West Virginia State College. Design of a revised stormwater system around the student union to help alleviate basement flooding issues.
- Town of Buffalo. Phase I storm sewer design and construction administration for over 2,000 ft. of storm sewer with discharge to the Kanawha River, that included permitting work with the Corps of Engineers.
- Analyzed various culvert scenarios consisting of modeling existing culverts and potential new corrugated metal pipe, steel pipe, concrete pipe and concrete box culverts to prevent upstream flooding from fill placement for Marietta Industrial Enterprises, Parkersburg, West Virginia.
- Designed an extensive stormwater management system consisting of several thousand feet of ditch and storm sewers, and two sediment ponds designed to limit inflow to pre-existing conditions for the 2-, 10-, 50-, and 100-year storm events for Hanover County Sanitary Landfill, Virginia.
- Melinda Street Stormwater Improvements. Underground stormwater detention system and storm sewer improvements design for the City of Parkersburg, West Virginia.

Site Development and Planning

- Coldwater Creek Distribution Center in Parkersburg, West Virginia. Wetland mitigation for a 7.5-acre area that required a detailed planting plan, pavement design and an engineers' cost estimate.
- Ft. Boreman Development in Parkersburg, West Virginia. Utility master planning, site preparation, roadway design, permitting, and stormwater management for the proposed 170-acre Fort Boreman mixed-use development near Martown Road interchange off U.S. Route 50 in Parkersburg.
- Chesapeake Energy Regional Headquarters in Charleston, West Virginia (LEED Project). Chesapeake Energy Field Offices in Jane Lew, West Virginia; Mount Morris, Pennsylvania; and Honey Branch, Kentucky.
- The Pines Country Club in Morgantown, West Virginia.
- Dow Chemical South Charleston Plant Entrance, Parking and Pedestrian Improvements in West Virginia.
- Tamarack Phase 2 Expansion in Beckley, West Virginia.
- Morgan County Courthouse Replacement in Berkeley Springs, West Virginia. Greenbrier County Courthouse Annex and Expansion in Lewisburg, West Virginia.
- Marshall University Clinical Outreach and Education Center, Huntington, West Virginia.
- Cheat Landing Office Park in Morgantown, West Virginia. The Villages at Cheat Landing in Morgantown, West Virginia
- Almost Heaven Habitat for Humanity, South Fork Crossing Subdivision, Pendleton County, West Virginia.
- Stonegate at Cranberry Development in Cranberry Township, Pennsylvania.

Parks and Recreation Areas

- April Dawn Sprayground and Park in Huntington, West Virginia. Lead Engineer for the continued development of the park consisting of an in-ground computer controlled fountain covered by suspended concrete pavers, a unique "Teays Valley Monster" concrete dragon over 8'-tall integrated into the design with slide and cool steam nostrils and a special soft surface design. The project won awards from the West Virginia Sections of the American Society of Landscape Architects and the American Consulting Engineers Council.
- Rotary Park Improvements Project in Huntington, West Virginia. Lead Engineer responsible for new parking areas, unique picnic shelter, utilities, and a new entrance that blended with existing facilities.

- Golf Club House and Lodge Site Development at Stonewall Jackson State Park in West Virginia. Project Manager for infrastructure including site design of the 100+-room lodge, parking, sewage lift station, extensive landscaping, and all aspects of construction administration.
- Cedar Creek State Park Camp Ground Expansion, Glenville, West Virginia. Dow Heritage Park in Charleston, West Virginia. Fort Boreman Historic Park in Parkersburg, West Virginia.

Streetscape and Trails

- Kanawha Trestle and Rail Trail Master Plan. Project Manager and Lead Engineer responsible for development. The plan covered the existing CSX trestle crossing the Kanawha River in Charleston and approximately 2 miles of Norfolk and Southern rail corridor through the West Side of Charleston.
- Project Manager or Design Engineer on multiple streetscape projects throughout West Virginia including Phase 1 Florida Street Streetscape, and Washington Street East Phase 2 and Pennsylvania Avenue streetscapes in Charleston, West Virginia.
- North Bend Rail Trail. Prepared construction documents to repair flood damage to almost 50 miles of trail.
- Florida Street Master Plan for the City of Charleston, West Side Neighborhood Association.
- City of Richwood, West Virginia Streetscape Master Plan and Phase 1 Construction.
- City of Charleston East End Design Cheret and "Think Tank" Design Cheret.

Waste Water and Potable Water Design

- National Radio Astronomy Observatory. Designed unique, non-mechanical, award-winning treatment system that uses no electricity and treats the entire campus wastewater load.
- Manufactured Housing Development Waterline Replacement. Designed over 5 miles of water line within an existing 1000+-unit manufactured housing development.
- Huttonsville Correctional Facility. Provided retrofit design for temperature, grease and trash issues.
- Anthony Correctional Center. Designed package water treatment plant for correctional facility.
- St. Mary's Correctional Facility. Retrofit design to address trash and grease issues.
- Pocahontas County Landfill. Modular trickling sand filters with aeration pond and polishing wetland.
- Multiple Landfills. Pre-treatment system design to remove high BOD levels prior to WWTP.
- Storage Tank Design. Multiple bolted or welded steel tanks primarily for leachate storage.

Abandoned Mine Land (AML) Reclamation and Acid Mine Drainage (AMD) Treatment

- Richard Mine Acid Mine Drainage. Treatment Alternatives Report, Monongalia County, West Virginia.
- Richard Mine Flow Monitoring Study. Design, installation, full time flow monitoring and reporting for a 1 year period on drainage from a substantial AMD discharge.
- East Branch Raccoon Creek Acid Mine Drainage (AMD) Treatment Design for the Ohio Department of Natural Resources.
- Vens Run Landslide Reclamation No. 2 Design and Permitting in Harrison County, West Virginia.
- Whites Run Reclamation Permitting in Randolph County, West Virginia.

Project Awards

National Radio Astronomy Observatory (NRAO) Wastewater Treatment Plant Design, West Virginia ACEC Gold Award, Project Manager

Florida Street Streetscape Masterplan, West Virginia ASLA Honor Award, Senior Engineer

Dupont Hyper Plaza Design, West Virginia ASLA Honor Award, Senior Engineer

Kanawha Trestle Rail Trail Masterplan, West Virginia ASLA Merit Award and West Virginia ACEC Silver Award, Project Manager

April Dawn Park Sprayground "Teays Valley Monster," West Virginia ASLA Honor Award and West Virginia ACEC Gold Award, Senior Engineer

Coldwater Creek Distribution Center Site Preparation, West Virginia ACEC Gold Award, Project Manager

David Gilmore, RLA, CLARB

Land Development Services Manager

Education

BSLA, College of Agriculture & Forestry, 1988 West Virginia University

Professional Affiliations

American Society of Landscape Architects, ASLA
WV Chapter of American Society of Landscape Architects
Council of Landscape Architectural Review Board, CLARB

Professional Development

WVASLA State Licensing Board Member, 2003-2006
Past President, WVASLA
Executive Committee Member, WVASLA
Chairman, WVASLA Licensing and Sunset Review Committee
Judge, Senior Design Awards, West Virginia University

Registrations

American Society of Landscape Architects
Council of Landscape Architectural Registration Board Certified
West Virginia Professional Landscape Architect No. 247
Indiana Professional Landscape Architect No. LA 20700137
Pennsylvania Professional Landscape Architect No. LA 002737
Ohio Professional Landscape Architect No. LA 0801200
Kentucky Professional Landscape Architect No. LA 768

Previous Employment

2003 to 2006 Triad Engineering, Inc. – Senior Landscape Architect
2000 to 2003 Environmental Design Group, Inc. – Senior Landscape Architect/Associate
1993 to 2000 LANDesign Associates – President
1988 to 1993 Valley Gardens, Inc. – Land Planner / Design Department Manager
1987 to 1988 Gifford, Nielson & Riesburg – Land Planner (internship)

Awards

- Merit Award (WVASLA): 'Hyper' Employee Plaza, Main Entrance Improvements
Client: Dupont Company
- Merit Award (WVASLA): Florida Street Revitalization Master Plan
Client: West Side Neighborhood Association

Professional Experience

Mr. Gilmore joined GAI Consultants in 2005 to manage the firm's land development and landscape architectural services. The central focus of his practice is on the continued development of the firm's site design and landscape architecture projects throughout the eastern United States, while providing landscape architectural support to all of GAI's offices and clients. He will serve as the overall project manager for the project overseeing scheduling, personnel, design and client communication.

Prior to joining GAI Consultants, Mr. Gilmore worked for a multi-disciplinary A&E firm in Charleston, South Carolina, providing architectural, engineering, landscape architectural design services. While working in South Carolina, Mr. Gilmore was involved with campus master designs for many colleges and universities, large downtown streetscapes and subdivision layout and design. Mr. Gilmore later worked with a landscape architectural and design firm in Charlottesville Virginia, where he continued his

Land Development Services Manager

professional development working on a wide range of projects for both the public and private sector. After returning to West Virginia in 1991, Mr. Gilmore has specialized in site design, land planning, streetscapes and parks and recreational design for numerous public and private clients in West Virginia and Eastern United States.

Mr. Gilmore currently serves as Land Development Services Manager and Landscape Architectural Services Manager for the Charleston branch of GAI Consultants. In this capacity, Mr. Gilmore brings twenty two years of experience on a diverse range of projects covering all aspects of landscape architectural design in both the public and private sector. Mr. Gilmore's experience includes but is not limited to construction document and technical specification preparation, site analysis, schematic design, construction administration, master and land use design (resorts, parks, recreational, residential, industrial, and commercial), streetscape and municipality improvements, landscape and hardscape design, and graphic presentation drawing.

Mr. Gilmore is also very active in the Landscape Architecture community, having served as the past president of the West Virginia Chapter of the American Society of Landscape Architects (WVASLA) and the State Licensing Board from 2000-2003. Mr. Gilmore also remains active with the WVU School of Landscape Architecture and has won multiple awards from the West Virginia Chapter of the American Society of Landscape Architects for his work.

Streetscape / Urban Revitalization:

- Charleston Riverfront Park, Charleston, WV
- Kanawha Boulevard Streetscape, Charleston, WV
- Court Street Overlook, Charleston, WV
- Pennsylvania Street, Carmel, IN
- St. Albans Master Plan, St. Albans, WV.
- St Albans Phase I, St. Albans, WV.
- St. Albans Phase II, St. Albans, WV.
- Pennsylvania Avenue Gateway, Charleston, WV
- Florida Street Revitalization Master Plan, Charleston, WV.
- Williamson Master Plan, Williamson, WV.
- MacCorkle Avenue Greenspace Improvements, Kanawha City, WV.
- Kanawha Valley Rapid Transit Shelter/Plaza Design, Charleston, WV

Parks & Recreation:

- Charleston Riverfront Park, Charleston, WV.
- Court Street Overlook, Charleston, WV.
- Shoenbaum Performance Stage, Charleston, WV.
- Stonewall Jackson State Park Master plan, Roanoke, WV.
- Berry Hills Country Club Master Plan, Charleston, WV.
- Twin Falls State Park, Twin Falls, WV.
- Dow Heritage Park, Charleston, WV.
- Charleston Area Medical Center General Division Employee Park, Charleston, WV.
- Dupont 'Hyper' Plaza, Belle, WV.
- Ohio to Erie Trail, Multiple Counties, OH.
- Coonskin Park, Charleston, WV.

Hospitals / Institutional / Campus Planning:

- Dow South Charleston Plant, WV.
- Beckley Federal Courthouse Security Upgrades, Beckley, WV.
- Charleston Area Medical Center Memorial Park, WV.
- King's Daughters Medical Center, Ashland, KY.
- WVU Gateway Study, Morgantown, WV.

David Gilmore, ASLA, CLARB

3

Land Development Services Manager

- Morgan County Courthouse, Berkeley Springs, WV.
- Raleigh County Courthouse, Beckley, WV.
- Town of Fayetteville Cemetery Master Plan, Fayetteville, WV.
- Trinity Lutheran Church Columbarium Master Plan, WV.
- First Presbyterian Church Columbarium Master Plan, WV.
- Elkview Baptist Church, Elkview, WV.
- St. Tomothy Lutheran Church, Charleston, WV.
- St. John's Baptist Church, Spencer, WV.
- Yeager Airport Master Plan, WV
- The Church of Jesus Christ of Latter-Day Saints, Multiple Projects / Multiple States
- Marshall University Dormitory / Alumni Center
- West Virginia University Dormitory, Evansdale Campus, WV.
- West Virginia University Dormitory, Downtown Campus, WV.
- Potomac State Dormitory
- West Virginia State Student Housing, Institute, WV.

Development / Site Planning:

- Cheat Landing Office Park, Morgantown, WV.
- The Villages at Cheat Landing, Morgantown, WV.
- Morgan County Courthouse, Berkeley Springs, WV.
- Raleigh County Courthouse, Beckley, WV.
- The Pines Country Club, Morgantown, WV.
- Stonegate at Cranberry, Cranberry Township, PA
- Bloomingdale Land-use Study, Hurricane, WV.
- Chesapeake Energy Regional Headquarters, Charleston, WV.(LEED Project)
- Chesapeake Energy Field Office, Jane Lew, WV.
- Chesapeake Energy Field Office, Mount Morris, PA.
- Chesapeake Energy Field Office, Honey Branch, KY.
- Ridge Run @ North Camp, Wisp Ski Resort, Deep Creek, MD.
- Cambridge Place Office Park, Bridgeport, WV.
- Stonewall Jackson State Park Masterplan, Roanoke, WV.
- Land-use Study / Development Alternatives, Aspen Corporation, Lewisburg, WV.
- Commerce Park Mixed-use Development Masterplan, Huntington, WV.
- Fort Boreman Mixed-use Development Masterplan, Parkersburg, WV.
- Wilkerson Dental Office, Charleston, WV.
- Ocean Isle Beach Resort Masterplan, Ocean Isle, SC.
- 5/3 Bank, Cross Lanes, WV.
- Banc One, Teays Valley, WV.

Residential Planning & Landscape Design:

- < 500 Projects



102 Leeway Street
 Morgantown, WV 26505
 Phone: (304)599-0771
 Fax: (304)599-0772
www.alleghenydesign.com



**CONSULTING ENGINEERING FIRM SPECIALIZING
 IN STRUCTURAL BUILDING DESIGN
 AND BUILDING ANALYSIS**

Allegheny Design Services is a consulting engineering firm specializing in structural building design and building analysis.

Dedicated to serving West Virginia and the surrounding region, ADS recognizes the need for reliable and full service structural engineering support. ADS provides all phases necessary for the successful completion of a building project including schematic design studies, design development, construction documents and specifications, and construction administration.

Over 20 years in Design and Project Management of:

- Commercial
- Industrial
- Institutional
- Educational Facilities



MIXED USE



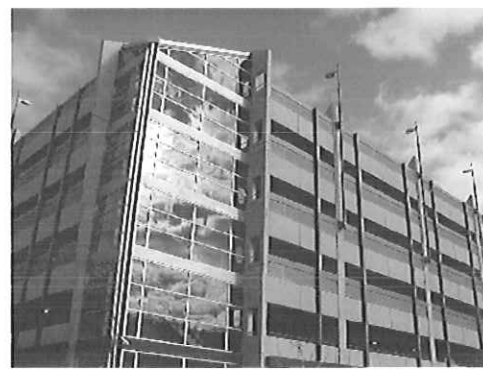
**HOTEL
 CONFERENCE CENTERS**



SECONDARY EDUCATION



OFFICE BUILDINGS



PARKING GARAGES



ATHLETIC FACILITIES



METAL BUILDING SYSTEMS



HEALTH CARE



Allegheny Design Services

Structural Engineering

102 Leeway Street

Morgantown, WV 26505

Phone: (304)599-0771

Fax: (304)599-0772

E-mail: Dave@AlleghenyDesign.com

Web: www.AlleghenyDesign.com

FIRM PROFILE

Allegheny Design Services is a consulting engineering firm specializing in structural building design and building analysis.

Dedicated to serving West Virginia and the surrounding region, ADS recognizes the need for reliable and full service structural engineering support. ADS provides all phases necessary for the successful completion of a building project including schematic design studies, design development, construction documents and specifications, and construction administration. We currently hold licenses in West Virginia, Virginia, Maryland, Pennsylvania, and District of Columbia.

ADS's experience exceeds twenty-five years in the Design and Project Management of:

Commercial Facilities

Industrial Facilities

Institutional Facilities

Educational Facilities

ADS was established by David Simpson, P.E., MBA, in 2002 as a result of a need in North Central West Virginia for reliable structural engineering services. ADS utilizes a combination of office technology and a motivated staff to deliver projects typically up to \$25 million in construction value. We have completed design work for over \$150 million in construction since our inception. Our clients include architects, contractors, developers, attorneys, and insurance companies.

Building systems delivered by ADS include structural steel, reinforced concrete, precast concrete, and structural timber. ADS currently utilizes the latest engineering design and drafting software for the development of project work.

ADS is covered under a \$1 million liability policy for errors and omissions through Beazley Insurance Company.



Allegheny Design Services

Structural & MEP Engineering

ALLEGHENY DESIGN SERVICES' EXPERIENCE TEAMING WITH WYK ASSOCIATES, INC.

Bank of Gassaway Flatwoods, WV

ADS was a sub-consultant to WYK Associates, Inc. for the Bank of Gassaway. Building consisted of steel framing with an open skylight and canopy center lobby. It was completed in 2008 at a cost of \$2 Million.



Bridgeport Public Safety Building Bridgeport, WV

ADS was a sub-consultant to WYK Associates, Inc. for the Bridgeport Public Safety Substation. The 2 story 15,000 square foot structure houses the Bridgeport Fire and Police Departments. It was completed in 2009 at a cost of \$3.2 Million.



Charles Point Exxon Travel Center Bridgeport, WV

ADS was a sub-consultant to WYK Associates, Inc. for the Charles Point Exxon Travel Center. The building houses a restaurant, convenience mart, and a fuel station. It was completed in 2007 at a cost of \$750,000.





Allegheny Design Services

Structural & MEP Engineering

Cutlip Christie Office Complex Clarksburg, WV

ADS was a sub-consultant to WYK Associates, Inc. for the Cutlip Christie Office Complex. The 12,000 square foot office building was completed in 2007 for \$1.5 Million.



Dominion Exploration Building Addition Jane Lew, WV

ADS was a sub-consultant to WYK Associates, Inc. for the Dominion Exploration Building Addition. The addition is a 10,500 square foot addition completed in 2008 for \$1.5 Million.



West Union Bank Clarksburg, WV

ADS was a sub-consultant to WYK Associates, Inc. for the West Union Bank. The bank branch is a 9,000 square foot facility completed in 2005 for \$1.5 Million. It received a Merit Award from AIA West Virginia.



PROJECT PROFILE

Martin Hall Exterior Restoration West Virginia University Constructed 1870 National Record of Historic Places



PROJECT ARCHITECT: Paul Marshall of Paul Marshall & Associates, Charleston, WV
PROJECT ENGINEER: David Simpson of Allegheny Design Services in former employ of WVU
GENERAL CONTRACTOR: Olentangy Restoration, Columbus, OH

PROJECT SCOPE:

- Exterior Brick Pressure Washed and Repointed
- Asphalt Shingles Replaced with Simulated Composite Slate Shingles
- Wood Cornices Repaired and Replaced
- Deteriorated Stone and Brick Repaired and Replaced
- Belltower Restored to Original Scheme

PROJECT VALUE: \$750,000

PROJECT COMPLETION: 1996





Allegheny
Design Services
Structural Engineering

PROJECT PROFILE

Woodburn Hall Exterior Restoration West Virginia University Constructed 1876 National Record of Historic Places



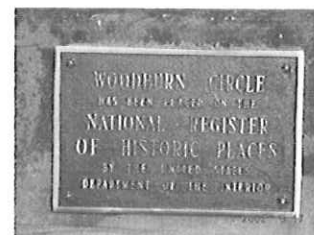
PROJECT ARCHITECT: Paul Marshall of Paul Marshall & Associates, Charleston, WV
PROJECT ENGINEER: David Simpson of Allegheny Design Services, Morgantown, WV
In former employ of WVU
GENERAL CONTRACTOR: Keystone Waterproofing, Latrobe, PA

PROJECT SCOPE:

- Exterior Brick Pressure Washed and Repointed
- Asphalt Shingles Replaced with Simulated Composite Slate Shingles
- Wood Cornices Repaired and Replaced
- Deteriorated Stone and Brick Repaired and Replaced

PROJECT VALUE: \$1 million

PROJECT COMPLETION: 1993





Allegheny

Design Services

Structural Engineering

102 Leeway Street
Morgantown, WV 26505
Phone: (304)599-0771
Fax: (304)599-0772
E-Mail: Dave@AlleghenyDesign.com
Web: www.AlleghenyDesign.com

David R. Simpson, P.E., SECB, MBA

President

Education:

West Virginia Institute of Technology
B.S. Civil Engineering

West Virginia University
Masters Business Administration

West Virginia State College
Architectural Technology

Professional Registrations:

Year first registered: 1983
Structural Engineering Certification Board
West Virginia
Pennsylvania
Maryland
Virginia
District of Columbia
National Council of Examiners for Engineering and Surveying

Professional Memberships:

American Society of Civil Engineers
Structural Engineering Institute, Charter Member
American Concrete Institute
American Institute of Architects – West Virginia Chapter
American Institute of Steel Construction, Inc.
American Iron and Steel Institute Member

Continuing Education:

2005 AISC Specification for Structural Steel Buildings – September 27, 2006 – Pittsburgh, PA
ASCE Testifying Skills for Engineers – February 16, 2007 – Orlando, FL

Professional Experience:

Responsible for project management and design at Allegheny Design Services. Experience includes over 24 years in structural design and project management for industrial, commercial, institutional, and nuclear/chemical facilities utilizing steel, concrete, masonry, and wood. Past accomplishments include design and construction administration of health care facilities, hotels, schools, shopping centers, aircraft hangars, numerous retail facilities, and numerous forensic engineering assignments. Experience has been obtained from the following assignments:

Experience Record:

Allegheny Design Services, LLC, President,	May 2002 to Present
R.M. Gensert and Associates, Vice President,	August 1998 to May 2002
West Virginia University, Assoc. Director Construction	August 1988 to August 1998
Simpson Engineering, Owner	August 1988 to August 1998
CECO Buildings Division, Senior Structural Engineer	April 1985 to August 1988
Rockwell International, Facility Structural Engineer	March 1982 to April 1985
Bellard Ladner & Assoc., Staff Structural Engineer	Sept. 1981 to March 1982
PPG Industries, Facility Structural Engineer	January 1980 to Sept. 1981

Additional Professional Experience:

Experience encompasses design, project management, and construction administration for reinforced concrete, structural steel, precast concrete, masonry, and wood structures.

Project experience includes:

Fairmont Senior High School, Fairmont, WV
Belmont Community Center, St. Clairsville, OH
Monongalia General Hospital Operating Room Addition, Morgantown, WV
Chestnut Ridge Church, Morgantown, WV
West Virginia University Business and Economics Building, Morgantown, WV
West Virginia University High Density Book Storage Facility, Morgantown, WV
West Virginia University Life Sciences Building, Morgantown, WV
West Virginia University Student Recreation Center, Morgantown, WV
West Virginia University Wise Library Addition, Morgantown, WV
West Virginia University White Hall Computer Center, Morgantown, WV
UPMC Hillman Cancer Center, Pittsburgh, PA
Carnegie Museum of Natural History Addition, Pittsburgh, PA
Cultural Trust District Parking Garage, Pittsburgh, PA
Delaware Valley Veterans' Home, Philadelphia, PA
Fairmont State University Parking Garage, Fairmont, WV
First Avenue Parking Garage, Pittsburgh, PA
Hillman Cancer Center (UPMC), Pittsburgh, PA
New Enterprise Precast Corporate Headquarters, New Enterprise, PA
Respironics Corporate Office Facility, Pittsburgh, PA
International Brotherhood of Electrical Workers Headquarters Training Center, Pittsburgh, PA
Laurel Highlands Middle School Addition, Uniontown, PA
Trinity High School, Morgantown, WV
Mylan Pharmaceuticals Parking Garage, Morgantown, WV
Phipps Conservatory Addition, Pittsburgh, PA
Radisson Hotel and Conference Center, Morgantown, WV
Western Pennsylvania School for Blind Children, Pittsburgh, PA
In-Situ Vitriification Nuclear Waste Encapsulation Project, Richland, WA
Dominion Transmission Office Building, Clarksburg, WV
Multiple structural evaluations and expert witness for structural damage due to subsurface mining subsidence, floods, ice, wind, and construction errors
Over 400 low-rise metal building projects from Maine to South Carolina, including warehouses, aircraft hangar facilities, shopping centers, industrial facilities, and office facilities.

Harper Engineering, pllc

52 B Street
St. Albans, WV 25177
Office: 304.722.3602 Fax: 304.722.3603

Harper Engineering, pllc was founded in 2008 to provide innovative engineering design services to architects, owners and contractors throughout the state. We are a unique combination of eager young talent and proven experience fused together to serve all of your building systems design needs including HVAC, Plumbing, Lighting, Electrical, Fire Alarm and Sprinkler Suppression systems.

Our goal is to design optimized systems that meet all of our client's performance, energy use, and budgetary needs. The staff at Harper Engineering has a combined 85 years of experience working with clients in a variety of fields including but not limited to K-12 Schools, hospitals, offices, airports, manufacturing, and water treatment plants.

Services:

HVAC Design

- Heating and Cooling load calculations
- Ductwork sizing
- Hydronic pipe sizing
- Equipment selection

Electrical Design

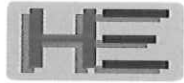
- Electrical load calculations
- Panel and switch gear selection
- Lighting
- Fire alarm
- Site Utilities
- Emergency Generators
- Security and communications

Plumbing Design

- Pipe Sizing
- Fixture Selection
- Sprinkler design
- Site Utilities

Drafting

- Specifications
- Project Management
- Construction Documents



Harper Engineering, PLLC

52 B Street
St. Albans, WV 25177
Office: 304.722.3602 Fax: 304.722.3603

Additions to Shady Spring Middle School: HVAC, Plumbing, Electrical, Fire Alarm, and Sprinkler design for a four classroom addition.

Renovations to Park Middle School: HVAC, Plumbing, and Electrical design for a 3 classroom renovation.

Additions and Renovations to Flinn Elementary School: HVAC, Sprinkler, and Electrical design for renovations to an existing 35,800 sq ft elementary school. Also included a 12,800 sq ft addition. Currently under construction.

Renovations to Moorefield Elementary School: Electrical, Plumbing, Fire Alarm, and Sprinkler renovations to an existing 58,000 sq ft elementary school. Currently under construction.

Braxton Co Schools Bond Program: HVAC, Plumbing, Electrical, Fire Alarm, and Sprinkler design for additions and renovations to 6 elementary schools throughout Braxton County. Total value of bond \$24,000,000.

W. Kent Carper Justice and Public Safety Complex: HVAC, Plumbing, Electrical, Fire Alarm, and Sprinkler design for renovations to the 62,400 sq ft Justice and Public Safety Complex.

Rahall Technology and Business Center Community Based Outpatient Clinic: HVAC, Plumbing, Electrical, Fire Alarm, and Sprinkler design for an 8,500 sq ft VA outpatient clinic.

Fairmont State College WV Folklife Center: HVAC, Plumbing, Electrical, Fire Alarm, and Sprinkler design for a renovation to a 6,100 sq ft historic building.

HE Harper Engineering, PLLC

52 B Street
St. Albans, WV 25177
Office: 304.722.3602 Fax: 304.722.3603



Jason E. Harper, PE
(304)-541-1390
jason@harperengwv.com

Education

West Virginia University Institute of Technology
Montgomery, WV
Bachelor of Science-Mechanical Engineering

Registrations/Professional Affiliations

Licensed Professional Engineer – WV, KY, MD
ASHRAE
NFPA
LEED Green Associate

Experience

Jason E. Harper, PE brings 10 years design experience to our firm. He has experience with HVAC, Electrical, plumbing, and fire alarm system design. His projects include educational facilities (including colleges and universities), health care facilities, office buildings, banks, emergency services facilities, postal facilities, and government buildings.

Projects

Addition and Renovation to Geary School
Baileysville Elem. HVAC Renovations
W. Kent Carper Justice and Public Safety Complex
Dominion Gas Office Building
Renovations to Glenville ES
Addition to Shady Spring Middle School
Addition and Renovations to Flinn Elementary
Renovations to Park Middle School

H a r p e r E n g i n e e r i n g , p l l c

5 2 B S t r e e t
S t . A l b a n s , W V 2 5 1 7 7
O f f i c e : 3 0 4 . 7 2 2 . 3 6 0 2 F a x : 3 0 4 . 7 2 2 . 3 6 0 3

Kevin Mark King, PE
mark@harperengwv.com

Education

West Virginia University Institute of
Technology Montgomery, WV
Bachelor of Science-Electrical Engineering

Bluefield State College
Bluefield, WV
Bachelor of Science-Computer Science

Wytheville Community College
Wytheville, VA
Associate Applied Science – Computer Information Systems

Registrations/Professional Affiliations

WV licensed Professional Engineer
WV licensed Master Electrician
LEED Green Associate

Experience

Kevin Mark King, PE brings 6 years of electrical design experience and over 10 years of electrical construction/maintenance experience to our firm. His projects include educational facilities (including colleges and universities), health care facilities, office buildings, emergency services facilities, government buildings and industrial projects.

Projects

Raleigh Co. 911 Center
Mason County 911 Center
WVARNG Fire Station
Sissonville Middle School

Independence High School HVAC
WVU Tech Printing Innovation Center
Talcott Elementary School
Greenbrier West High School Renov.

HE Harper Engineering, PLLC

52 B Street
St. Albans, WV 25177
Office: 304.722.3602 Fax: 304.722.3603



Scott D. Phillips
(304)-722-3602
Scott@harperengwv.com

Registrations/Professional Affiliations

American Society of Plumbing Engineers

Experience

Scott D. Phillips brings 27 years design experience to our firm. He has experience with mechanical, electrical, plumbing and fire suppression system design. His projects include educational facilities (including colleges and universities), health care facilities, office buildings, banks, emergency services facilities, postal facilities, and government buildings.

Projects

Renovations to Glenville ES
W. Kent Carper Justice and Public Safety Complex
Renovations to Burnsville ES
Terra Alta ES Fire Alarm
Timber's Lodge
Oak Hill Police Station
Additions and Renovations to Little Birch Elementary
Moses Factory Outlet- Teays Valley
Dominion Gas Office Building
Fairmount State University WV Folk Life Center
Raleigh Co. BOE Credit Union
Rahall Technology and Business Center Community Based Outpatient Clinic
Renovations to Davis ES



WYK ASSOCIATES, INC.
ARCHITECTURE • PLANNING

WYK's Repeat Clientele
West Virginia

Pocahontas County Commission

Harrison County Bank

Davis Memorial Hospital

Kappa Sigma Pi

Citizens' National Bank of Elkins

Barbour County Commission



United Hospital Center

Harrison County Commission

City of Clarksburg

Vienna Public Library

United Summit Center

V.A. Medical Center - Clarksburg



Toothman & Rice

Harrison County Senior Citizens

Greathouse Funeral Home

Barbour County Board of Education

Harrison County Development Authority

Quiet Dell United Methodist Church



Lewis County Board of Education

Dominion Exploration and Production

Harrison County Board of Education

North Central West Virginia Airport

World Vision



Fairmont State University

Corhart Refractories

West Union Bank

Harrison County YMCA



City of Salem

Daisy Development

ARC of Harrison County

Marion County Libraries

City of Bridgeport

Webster County EDA

West Virginia University

City Neon

Stockmeier Urethanes



Preston County Commission

WYK's Emphasis is on CLIENT SATISFACTION; We Feel Our Strong Repeat Clientele Base is a Testament to That Fact



WYK ASSOCIATES, INC.
ARCHITECTURE · PLANNING

References
WYK Associates, Inc.

We Urge You to Contact the Following:

Reta Griffith, Former Commissioner

Pocahontas County (1998-2010)
RR1 Box 122A
Marlinton, WV 24954
(304) 799-4523

Dr. Joseph Mace, Superintendent

Lewis County Schools
239 Court Street
Weston, WV 26452
(304) 269-8333

Charles (Chuck) Foley, County Administrator

Barbour County Commission
8 North Main Street
Philippi, WV 26416
(304) 457-4339

Richard Roach, Mayor

Town of Gassaway
712 Braxton St.
Gassaway, WV 26624
304-364-5111

Stephanie Slaubaugh, Construction Project Manager

Fairmont State University
1201 Locust Avenue
Fairmont, WV 26554
(304) 367-4861

Jim Christie, Mayor

City of Bridgeport
P.O. Box 1310
Bridgeport, WV 26330
(304) 842-8200, Ext. 115

40 Main Street
Shinnston, WV 26431-1198



Phone (304) 592-5631
Fax (304) 592-1597

February 8, 2012

To Whom It May Concern,

The City of Shinnston has worked with WYK Associates, Inc., on a variety of projects and has always been impressed by their level of skill, professionalism and commitment to quality. The staff exhibits an expertise in their field and is attentive and attuned to the community they are working in.

Current projects that WYK Associates, Inc., are assisting the City of Shinnston with include the design and construction of the Shinnston Community Building. This \$5 million building is located at the entrance to the City's historic downtown district and WYK have excelled at designing a building sensitive to its location and history, yet able to carry the City into the twenty first century. From initial stakeholder meetings to design presentations, the team at WYK listened to the community's needs and responded accordingly.

The City of Shinnston is also utilizing the planning and design aspect of WYK Associates, Inc., on the former G.C Murphy building project. This project is a detailed feasibility study to assist the City in deciding whether to purchase the hundred year old property. The WYK team has researched the current condition, reviewed code requirements with regard to future development and developed a plan for the highest and best use of the building.

In 2009, WYK Associates Inc., designed and managed the renovation of the City of Shinnston Museum. The Museum now has excellent display space, coupled with galleries for exhibits, and a spacious meeting area. WYK's ability to design space to serve multiple purposes has meant that the Museum is used for government meetings and receptions as well as traditional preservation uses.

The City of Shinnston has been very pleased to partner with WYK Associates, Inc., on these and other projects. From architects to administrative support personnel, the firm exhibits a high commitment to quality and customer satisfaction.

Yours truly,

A handwritten signature in cursive script that reads "Emma Clarke".

Emma Clarke
Finance Officer

WEST MILFORD ELEMENTARY SCHOOL



226 School Street
West Milford, West Virginia 26451
304-326-7030
FAX: 304-745-4488



February 4, 2010

Mr. William Yoke
WYK Associates, Inc.
PO Box 1484
Clarksburg, WV 26301

Dear Mr. Yoke,

As we complete the first year in our new rooms, I wanted to express our pleasure with our four-room addition. The design has exceeded our expectations, providing ample classroom and storage space for our kindergartens and preschool.

I particularly appreciated working with WYK who encouraged our involvement in important decision making. I was always confident that answers to my questions were only a phone call away. Our requests involved structural changes including the incorporation of a staff bathroom as well as aesthetic elements for color choices. Our choice of a primary color for each room provides bright, colorful environments for our young students. Students can easily locate the "red, yellow, blue, or green room" in that wing.

Please feel free to share this letter with any prospective clients as I am glad to "spread the word" about our pleasure of working with your firm.

In Appreciation,

Wendy Imperial

Wendy Imperial, Principal



Health Access, Inc.

489 Washington Avenue • Clarksburg, West Virginia 26301
Phone: 304-622-2708 • Fax: 304-623-9302 • E-mail: healthac@ma.rr.com • Web: www.healthaccessinc.org

July 16, 2010

James B. Swiger, AIA, NCARB, LEED AP
Vice President / Principal
WYK Associates, Inc.
205 Washington Avenue
Clarksburg, WV 26301

RE: Health Access, Inc. Renovation/Building Project

Dear Mr. Swiger:

Health Access, Incorporated has now moved back into our recently renovated clinic located at 489 Washington Avenue and I wanted to write to tell you how very pleased we are with the work of WYK in designing, planning and managing our project. From the outset, your attention to the details of our operation and our specific space and functionality needs within this medical facility have been outstanding. Your willingness to make changes in the design phase as required by our budget limitations really brought us to the very best design that we could afford.

Throughout the entire project, your "hands on" approach to managing the project made the process not only manageable but very successful. The contractors that WYK invited to bid on the project were all top of the line in our area and I'm confident that any one of them would have done excellent work, however we were extremely satisfied with the successful bidder; Elkview Builders, Inc.

Please feel free to use Health Access, Incorporated as a reference to any potential clients seeking Architectural, Planning-Design or Project Management services. We can certainly recommend WYK Associates, Incorporated without reservation as we are a very satisfied customer. Thank you again for your efforts to make this beautiful new home for the free clinic and the hundreds of low income uninsured patients we are privileged to serve.

Sincerely,

Kay Cottrill, President



131 WEST MAIN ST. • BRIDGEPORT, WEST VIRGINIA 26330-63
Phone: (304) 842-8251 • Fax: (304) 842-8254 • www.bridgeportwv.com
CHUCK FEATHERS • BRIDGEPORT FIRE DEPARTMENT
Chief

September 20, 20

Mr. James B. Swiger
WYK Associates, Inc.
205 Washington Avenue
Clarksburg, WV 26301

Dear Mr. Swiger,

It has been almost a year now since we moved into our new Public Safety Substation and I wanted to take a moment to thank you for all you did in insuring the success of our building. It is more than we expected when we first started this project. Your detail to our requests as we started this project is what has made it such a workable project. You took our words on what we wanted and turned them into a state of the art public safety building that is not just pleasing to the eye but very functional.

Throughout the project as problems rose you were quick to find answers that worked for our needs and decisions evolved around our needs instead of what worked best for others.

Thank you again for all the great work you did for us and the building stands as a tribute to you and your firm for a job well done. If I can be of assistance to you in the future just let me know.

Sincerely,



Charles A. Feathers, Chief

Bridgeport Fire Department

March 10, 2011

Mr. James B. Swiger, AIA
President / Principal-In-Charge
WYK Associates, Inc.
205 Washington Avenue
Clarksburg, WV 26301

Dear James:

This letter is in appreciation of all the work WYK Associates has provided to the Pocahontas County Commission and myself over the last year. I have thoroughly enjoyed working with your company and have appreciated the professionalism and dedication you have given our projects.

Due to the historic nature of the Pocahontas County Courthouse I knew there would be surprises in replacing the roof and installing an elevator. WYK was very creative in overcoming these challenges and researching alternatives that would fit within the budget of funds we had to use for this project. I have also enjoyed the consistent and timely communication you provided while I was managing the project for the County Commission. You never failed to respond to a request, and even provided direction when we were at a loss as to how to proceed.

I would highly recommend your company for other projects with local governments or in the private sector.

Thank you again for all your assistance.

Reta Griffith

Sincerely,
Reta Griffith
Former Commissioner, Pocahontas County (1998-2010)
RR 1 Box 122A
Marlinton, WV 24954
304-799-4523
retagriffith@frontiernet.net

ADDENDUM ACKNOWLEDGEMENT FORM
SOLICITATION NO.: CHA12017

0013

Instructions: Please acknowledge receipt of all addenda issued with this solicitation by completing this addendum acknowledgment form. Check the box next to each addendum received and sign below. Failure to acknowledge addenda may result in bid disqualification.

Acknowledgment: I hereby acknowledge receipt of the following addenda and have made the necessary revisions to my proposal, plans and/or specification, etc.

Addendum Numbers Received:

(Check the box next to each addendum received)

- | | |
|--|--|
| <input checked="" type="checkbox"/> Addendum No. 1 | <input type="checkbox"/> Addendum No. 6 |
| <input type="checkbox"/> Addendum No. 2 | <input type="checkbox"/> Addendum No. 7 |
| <input type="checkbox"/> Addendum No. 3 | <input type="checkbox"/> Addendum No. 8 |
| <input type="checkbox"/> Addendum No. 4 | <input type="checkbox"/> Addendum No. 9 |
| <input type="checkbox"/> Addendum No. 5 | <input type="checkbox"/> Addendum No. 10 |

I understand that failure to confirm the receipt of addenda may be cause for rejection of this bid. I further understand that any verbal representation made or assumed to be made during any oral discussion held between Vendor's representatives and any state personnel is not binding. Only the information issued in writing and added to the specifications by an official addendum is binding.

WYK Associates, Inc.
Company
[Signature]
Authorized Signature
7/11/12
Date

NOTE: This addendum acknowledgment should be submitted with the bid to expedite document processing.
Revised 6/8/2012

STATE OF WEST VIRGINIA
Purchasing Division

PURCHASING AFFIDAVIT

West Virginia Code §5A-3-10a states: No contract or renewal of any contract may be awarded by the state or any of its political subdivisions to any vendor or prospective vendor when the vendor or prospective vendor or a related party to the vendor or prospective vendor is a debtor and the debt owed is an amount greater than one thousand dollars in the aggregate.

DEFINITIONS:

"Debt" means any assessment, premium, penalty, fine, tax or other amount of money owed to the state or any of its political subdivisions because of a judgment, fine, permit violation, license assessment, defaulted workers' compensation premium, penalty or other assessment presently delinquent or due and required to be paid to the state or any of its political subdivisions, including any interest or additional penalties accrued thereon.

"Debtor" means any individual, corporation, partnership, association, limited liability company or any other form or business association owing a debt to the state or any of its political subdivisions. "Political subdivision" means any county commission; municipality; county board of education; any instrumentally established by a county or municipality; any separate corporation or instrumentally established by one or more counties or municipalities, as permitted by law; or any public body charged by law with the performance of a government function or whose jurisdiction is coextensive with one or more counties or municipalities. "Related party" means a party, whether an individual, corporation, partnership, association, limited liability company or any other form or business association or other entity whatsoever, related to any vendor by blood, marriage, ownership or contract through which the party has a relationship of ownership or other interest with the vendor so that the party will actually or by effect receive or control a portion of the benefit, profit or other consideration from performance of a vendor contract with the party receiving an amount that meets or exceed five percent of the total contract amount.

EXCEPTION: The prohibition of this section does not apply where a vendor has contested any tax administered pursuant to chapter eleven of this code, workers' compensation premium, permit fee or environmental fee or assessment and the matter has not become final or where the vendor has entered into a payment plan or agreement and the vendor is not in default of any of the provisions of such plan or agreement.

Under penalty of law for false swearing (*West Virginia Code* §61-5-3), it is hereby certified that the vendor affirms and acknowledges the information in this affidavit and is in compliance with the requirements as stated.

WITNESS THE FOLLOWING SIGNATURE

Vendor's Name: WYK Associates, Inc.

Authorized Signature: [Signature] Date: 7/11/12

State of West Virginia

County of Harrison, to-wit:

Taken, subscribed, and sworn to before me this 11th day of July, 2012.

My Commission expires January 21, 2021.

AFFIX SEAL HERE

NOTARY PUBLIC [Signature]

