



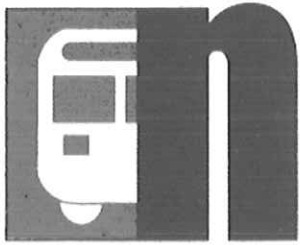
**State of West Virginia
Department of Administration
Purchasing Division**

NOTICE

Due to the size of this bid, it was impractical to scan every page for online viewing. We have made an attempt to scan and publish all pertinent bid information. However, it is important to note that some pages were necessarily omitted.

If you would like to review the bid in its entirety, please contact the buyer. Thank you.

NATIONAL



BUS SALES

MidAtlantic Region

P.O. Box 6549 ■ Marietta, GA 30065-0549
800 Pickens Drive Ext. ■ Marietta, GA 30062
GA - (770) 422-8920 ■ FAX - (770) 422-9007
Toll Free (800) 282-7981 Ext. 59

2075 West Main Street ■ Waynesboro, VA 23322
FAX ■ Home Office (540) 337-4619

VA - (540) 943-3430 ■ Cell - (540) 729-3751

Regional Manager - David M. Clawson, Jr.
dclawson@nationalbussales.com

PTR 12029 for Division of Public Transit



Goshen GCII

DAVID M. CLAWSON, JR.
Regional Manager – Transit Sales
Commercial Bus Division

RECEIVED

2012 MAY -9 PM 1:00

WV PURCHASING
DIVISION

NATIONAL



BUS SALES

MidAtlantic Region

P.O. Box 6549 ■ Marietta, GA 30065-0549
800 Pickens Drive Ext. ■ Marietta, GA 30062
GA - (770) 422-8920 ■ FAX - (770) 422-9007
Toll Free (800) 282-7981 Ext. 59

2075 West Main Street ■ Waynesboro, VA 23322
FAX ■ Home Office (540) 337-4619
VA - (540) 943-3430 ■ Cell - (540) 729-3751
Regional Manager - David M. Clawson, Jr.

May 9, 2012

Mr. Paul Reynolds
Department of Administration
Purchasing Division
2019 Washington Street, East
P.O. Box 50130
Charleston, WV 25305-0130

Ref: PTR 12029

Dear Mr. Paul Reynolds:

National Bus Sales and Leasing, Inc. appreciates this opportunity to submit a bid for transit vehicles to the State of West Virginia. Our offering, a Goshen GC II, meets the intent and letter of your specifications and amendments #1 and #2 with the following documentation, clarifications and explanations per your Required Documentation Checklist:

Section

Required Documentation

- 4.1 National Bus Sales certifies that each vehicle will be delivered with the documentation required per 4.1.1-4.1.12 with the exception of 4.1.10 window sticker which only applies to an incomplete chassis not entire bus as manufactured.
- 8.5.1 Bid offering – Current model year Ford E450 chassis with Goshen Coach GC II bus body. Major components include a 6.8 L V10 gasoline engine, a ACT dual compressor air conditioning system and a Braun NHTSA compliant Millennium wheelchair lift. See enclosed GC II literature at Enclosure A and a list of equipment for the 2WC Unit Enclosure B.
- 8.5.3 Curb weight – See Cert of Origin for GVWR at Enclosure C and shipping weight for each floorplan at Enclosure X
- 8.5.5 Warranty Locations – National Bus Sales & Leasing, Inc. is responsible to coordinate all warranty repairs through our Customer Service Center at 1-800-282-7981 29 or at our website, www.nationalbussales.com. See table below for compliance with Part 3, 2.2.1

2..2.1 Warranty Service and coverage is provided separately for the following bus components:

A. Chassis – Nearest Ford dealer that is truck certified (E350/450).

B. Bus Body – Nearest facility authorized by National Bus on behalf of Goshen coach. Note: If repairs required fall within the capability of the transit system, authorization and reimbursement can be made directly to the operator.

C. Major Components – Lift and A/C dealers closest to transit facility.

As a courtesy to the State of West Virginia, the following list of chassis providers is included:

A. Chassis – Northern Panhandle	Sam Yanen Ford
(304) 845 – 4244	Moundsville, WV
B. Chassis – Eastern Panhandle	Kent Parsons Ford
(304) 263 – 3344	Martinsburg, WV
C. Chassis – Central	Chenoweth Ford
(304) 623 – 6501	Clarksburg, WV
D. Chassis – Southern	Bert Wolfe Ford
(304) 340 – 7278	Charleston, WV

As a courtesy to the State of West Virginia, the following list of body providers is included:

A. Chassis – Northern Panhandle	National Bus
(800) 282 – 7981	Customer Service Ctr
B. Chassis – Eastern Panhandle	Martz Auto Repair
(304) 267 – 9137	Martinsburg, WV
C. Chassis – Central	Seller's Truck N Auto
(304) 622 – 5876	Clarksburg, WV
D. Chassis – Southern	National Bus
(800) 282 – 7981	Customer Service Ctr

The only authorized full service Braun dealer in the state is:

A. WV Truck and Trailer

Nitro, WV (304) 755 – 0113

B. All other lift repair authorizations require calling Braun directly at 1-800 THE LIFT with problem and lift serial number.

The following are authorized air conditioning repair facilities in the state are:

SELLERS TRUCK 'N' AUTO 1129 E. PIKE ST CLARKSBURG
304-622-5876

MOUNTAINEER THERMO-KING 2252 ROXALANA RD DUNBAR
304-744-7344

FLEET SERVICE CO. 3007 CHAPLINE ST WHEELING
304-232-6140

WEST VIRGINIA TRUCK & TRAILER 1 JAIN DR. CROSS LANES
304-755-0113

HEMLOCK FLEET SERVICE 609 DIVISION ST PARKERSBURG
304-422-3166

8.5.6 Nearest Depot for parts supply:

National Bus Sales & Leasing, Inc.	National Bus Sales & Leasing, Inc.
P.O. Box 6549	800 Pickens Drive Ext.
Marietta, GA 30065-0549	Marietta, GA 30062

8.5.8 Assembly Point

Warrick Industries, Inc.
Goshen Coach Division
1110 D.I. Drive
Elkhart, IN 46514

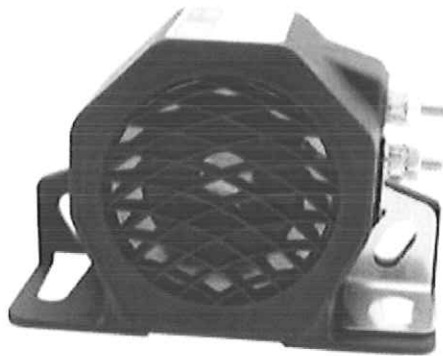
8.5.9 End User Reference list enclosed at Enclosure D.

- 24 National Bus Sales understands they are responsible to coordinate and help conduct 2 all day training sessions per year for the duration of the contract. It is National's responsibility to coordinate component representatives to assist in the training (i.e. wheelchair lift, securement systems and air-conditioning) The Division of Public Transit has in the past arranged for suitable location, scheduled the training and publicized training event state wide
- 3.1 Base bid is a Ford Gasoline Engine, 6.8L V10 Warranty is by Ford Motor Corporation – 3yr/36,000 miles. See Ford 2012 Shuttle Bus Overview at Enclosure E for additional information.
- 3.1.6 Cooling system - Gasoline Engine equipped with large capacity radiator and viscous thermostatically activated cooling fan Warranty – 3yr/36,000 miles. See Enclosure E for additional information.
- 3.1.7 High idle system – Gasoline engines are equipped with Goshen installed Intermotive Gateway High Lock idle controller. See enclosure F. This system is integrated with an ADA compliant wheelchair interlock required by FMVSS 403/404. Minimum warranty – 1 year / 12,000 miles falls under Goshen Add-on equipment.
- 3.1.8 Engine oil cooler – Ford OEM oil cooler is standard on base bid. It is a full- flow, cylindrical tube type with an external cooling fin bundle. See enclosure E for additional information. Warranty – 3yr/36,000 miles Ford.
- 3.2 See Enclosure E for Ford OEM 5R110W transmission details. Warranty – 3yr/36,000 miles Ford.
- 3.2.4 Transmission cooling system – Ford OEM 5R110W transmission comes standard with an in-tank oil cooler and an external auxiliary transmission oil cooler operating on the same principal as the coolant radiator. Warranty – 3yr/36,000 miles. See enclosure E for additional details
- 4.1 Heavy-duty brakes – Ford OEM brakes are four wheel disc type: powered, self-adjusting, dual hydraulic with a brake hydro booster and four wheel anti-lock feature. Warranty – 3yr/36,000 miles. See enclosure E for additional details
- 4.3 Suspension system – Ford OEM suspension system includes the following components:
- A. 5,000 lb. front coil spring.
 - B. Multi-leaf, single stage springs rated at Max. Pay load of 9,600 lbs.
 - C. 21mm front stabilizer bar
 - D. 1.125" rear stabilizer bar
 - E. 25mm pressure tube gas filled front and rear shocks
- Warranty – 3yr/36,000 miles. See enclosure E for additional details
- 4.3.1 See enclosed Mor-Ryde documentation at Encl G Warranty 3yr/70,000 miles.
- 4.4.1 Ford OEM Tires - LT245/75R 16E BSW All Season Tire - Brand TBD. Warranty is limited to manufacturing defect and covered under Ford warranty umbrella. See enclosure E for additional details.
- 5.0 Ford OEM 12V Electrical system is integrated with a solenoid triggered body electrical system, all 12V circuits with circuit breaker and fuse interface. See Bussmann Series 3000 VEC electrical center at Enclosure H. See Enclosure B – As Built wire schematics are ordered for each bus.

- 5.1 Alternator for Gas chassis will be ordered from Ford on the E450 chassis. A single 225-amp alternator will be provided. Ford option # - (63N).
Warranty – 3yr/36,000 miles.
- 5.2 Batteries – Gasoline chassis has (1) 650 Cold Cranking Amps (CCA) battery and (1) 625 CCA battery for a total of 1275 CCA's to meet WV spec. Note: Only one of the two batteries can be relocated to the slide out battery tray required in the specification due to restrictions by the Ford Quality Vehicle Modifier (QVM) Program. One will be relocated to the battery box with stainless steel tray. Warranty 3yr/36,000 miles. See enclosure E for additional details
- 5.3.4 LED lights – Goshen installs Optronics series of LED lights for its brake, reverse, marker and clearance applications. This brand of light is readily available from any parts supply house catering to trucks and buses. Warranty minimum 1yr /12,000 miles on connector and up to lifetime on diodes. See Enclosure J
- 5.4.1 Interior lights are also Optronics LED 2"x 4" clear lense type. This brand of light is readily available from any parts supply house catering to trucks and buses. Warranty minimum 1yr /12,000 miles on connector harness from Goshen and up to lifetime warranty from Optronics on diodes. See Enclosure K.
- 5.6.2 Currently offered back-up alarm is by Ecco. Activates when vehicle is shifted into reverse to warn those near-by that vehicle is moving backwards. See info below.
Minimum warranty coverage is 1 year / 12,000 miles, Goshen Add-on

Ecco 520 Back Up Alarm Self Grounded 12-24V 97dB

Back Up Alarm, Self Grounded, Width 4 In., Height 2.6 In., Dia. 1.6 In., Color Black, Voltage 12 Decibels 97 Db, Meets Osha, Bureau Of Mines, Gsa K-spec, And All State Regulations. Standards, Includes Universal Mounting Bracket



- 5.6.4 Intelligent Audible Alarm – No longer required by specifications.
- 5.7 Back-up camera system is now required in place of 5.6.4
Goshen will provide a Rear view safety camera system. See Enclosure L
- 6.1.1 Passenger heating system – Ford OEM dash installed heater is standard with the Ford E450 chassis. Type –thermostat controlled circulating hot-water. Warranty – 3yr/36,000 miles. See Enclosure E for additional information.
- 6.1.2 Stepwell heater – Goshen will install for this bid an electric pad style heater on the bottom step. The heater is thermostatically controlled. It will only operate when the ignition is in the on position. The heater works by radiating heat to the underside of the bottom step most prone to icing. See Enclosure M. Minimum warranty is 1 year/12,000 miles, Add-on.

- 6.1.3 Auxiliary heater is a Goshen installed Pro- AIR model # 435. It is a floor mounted heater that is controlled independently from the dash heater. Features include a plastic encased hot water radiator with a two-speed fan remotely controlled from the driver's area. Two are installed. See Enclosure N. Minimum warranty is 1 year / 12,000 miles, Add-on.
- 6.2 Air conditioning system – Ford OEM dash installed air-conditioning is standard with the Ford E450 chassis. Goshen installs the rear AC prior to the interior finish stage of the bus body. For this specification, Freon lines will be connected to an auxiliary compressor in addition to a stand-alone Ford OEM compressor. An ACT ceiling mounted evaporator and a two fan skirt mounted condenser will function independently of the Ford system. Thermostat and fan speed control wiring are remotely located to the driver's area. See enclosure O.
- 6.3 See enclosed Transpec literature at enclosure . Minimum warranty 1 year / 12,000 miles, Add-on. See enclosure P.
- 8.1.1 Body Construction – See enclosure Q for Goshen Coach Body construction. Structural Warranty is 6yr/60,000 miles.
- 8.1.8 Goshen water test procedures at Enclosure R.
- 8.2.1 Goshen's standard construction for roof panels is currently a one-piece lamination. See Enclosure A back side of literature or Enclosure Q paragraph 5.2 D. Call inspector Ryan Minges of First Transit for further verification.
- 8.2.2 Insulation – Goshen installed insulation is 1.5" thick rigid polystyrene thermal insulation with an R value of 4.6 per inch. See Enclosure S for MSDS showing fire retardant properties and non-toxicity.
- 8.4.2 Floor information at enclosure T. Minimum warranty - 1 year / 12,000 mile Add-on.
- 8.5 Help Bumper- SMI Energy Absorbing Bumper Information at Enclosure U. Minimum warranty- 1 year/12,000 mile Add-on.
- 9.2.3 Electric Operated Door – A&M fabricated header serves as mounting plate for assembly of gearing, electric actuated motor and door control rods. Control switch is remotely controlled from the driver's area. Minimum warranty - 1 year /12,000 miles, Add-on. See Enclosure V for detailed description and schematic of door control circuit.
- 10.1 Lift – Goshen Coach will install a Braun NHTSA compliant Millenium lift. See documentation at enclosure W. Goshen will install the Millenium **NL917FIB3751-2** per ammendment in rear lift buses and **NL917IB3751-2** in front lift 2WC buses. Both models of the millennium lift are NHTSA Compliant with a Usable Platform: 37" x 51".
- 10.2.7 Interlock documentation is combined Highlock system by Intermotive at Enclosure F.
- 11.0 Seating Diagrams – At Enclosure X.
- 11.1 Passenger Seating – All literature has been downloaded from the Freedman website - www.freedmanseating.com . See Enclosure Y for literature and FMVSS 210 certification.
- 11.2 Driver's Seat – A Freedman Shield Sport high back seat driver seat shall be provided. The seat will have Level 3 cloth upholstery and a single fold up armrest on the driver's right side. The Ford driver's door provides the second armrest. The seat will be mounted to the Ford OEM pedestal, which meets all FMVSS standards and is electronically linked to the Ford driver restraint system and the Ford air bag system. See Enclosure Z. Minimum warranty - 1 year /12,000 miles, Add-on.
- 11.3 Mobility Aid system – See enclosed Q'Straint literature at Enclosure 1. Warranty- 2 year limited warranty from Q'Straint. System is -#A1 with fully retractable shoulder belt
- 13.1 Rosco M715 series mirrors with option for electric remote controlled and heated included . Covered by minimum 1 year /12,000 mile add-on warranty. See enclosure 2.
- 16.0 Radio/CD – Goshen is back to using the Panasonic brand of radios. See below:

Panasonic CQ-CM130U MP3/CD/PA Ready

CQ-CM130U PA Ready - MP3 CD Radio

- 200 Watts
- PA Ready - requires additional PA kit available from MITO Corporation
- SQ Presets for Rock, Pop, or Vocal
- Auto Preset Memory
- Digital Clock
- LED Lighting
- Supports CD-R/RW Disc Playback
- Plays MP3 Format



Includes CD with clock and is installed in the dash space reserved for radios. The above model is the current offering but may be succeeded at any time by a new equivalent model #. Covered by minimum 1 year /12,000 mile add-on warranty.

19.1 Interior Color Schemes :

- A. Sidewalls – Grey FRP
- B. Pads – Grey Vinyl to match cab
- C. Flooring – Blue rubber per RCA enclosure
- D. Ceiling – Grey FRP
- E. Cab – Grey vinyl

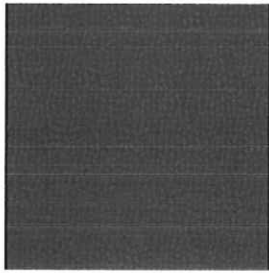
Exterior Colors – The Ford chassis comes standard in Oxford White Clear coat, code YZ. All Goshen exterior body parts match code YZ with the exception of aluminum trim strips, black rubber rear bumper and exterior lights.

19.2.2 Paint scheme – See enclosure 3 for color choices for graphics.

19.4 Undercoating – Goshen Coach will apply ZTECH undercoating in accordance with Ford's QVM program. The undercoating will be covered under a separate 5 year limited warranty. See enclosure 4.

20.0 Option B Electric digital destination signs by Twin Vision, Amber LED. See Enclosure 5. Other features of fixed route package include, passenger stop request system, integrated Panasonic PA system with internal and external speakers, farebox prep, additional stanchion and Pulsator model # 211823-02 with clear lens strobe light. Twin Vision signs have a 3 year limited warranty and all other components are covered by the 1 year /12,000 mile add-on warranty

- 20.0 Option D Cloth passenger seats in Level 4 solid Repel fabric. See insert below from www.freedmanseating.com. Covered by minimum 1 year /12,000 mile, add-on warranty.



#119 Dimensions Nanocide Late Evening

SPECIFICATIONS CMI has developed the Dimensions line of coated fabrics with Nanocide for use in public transportation that uses a patent pending process of permanently embedding nanoscale silver particles, from an EPA registered Oeko-Tex approved source in our product during the manufacturing process. Silver is a natural antimicrobial. Microbes and fungi cannot survive in the presence of silver ions. The smaller the silver particles, the more silver ions they emit and the more unwanted microbes are eliminated. Silver enhanced antimicrobial products actively inhibit bacterial growth and show a 99.9% reduction in test microbes and common bacteria.*

- 20.0 Option E Flip –up arm rests by U.S. Arm. See enclosure 6 from www.freedmanseating.com . Covered by minimum 1 year /12,000 mile, add-on warranty
- 20.0 Option G Child restraint seat – See enclosure 8 from www.freedmanseating.com. Covered by minimum 1 year /12,000 mile, add-on warranty
- 20.0 Option H Traffic alert sign. See enclosure 9. Covered by a minimum 1 year /12,000 mile add-on warranty.
- 20.0 Option I Security Camera System by REI . Model # R40001 while supplies last. Model #SD40 will replace the #R40001 later this year. Both will be priced the same. See Enclosure 10 and 11 for literature and details.
- 20.0 Option J Security Camera Playback system will be a desk top standalone PC with 17” flat screen monitor and Bus-Watch software installed. PC brand and specifications to be determined at time of purchase. See enclosure 12 for software item number.
- 20.0 Options K, L, and M Painting- See provided Paint Samples at Enclosure 13
- 20.0 Option N See Enclosure 14 for literature.
- 20.0 Option O Talking Bus Enclosure 15 for Literature and Description
- 20.0 Option P Braun Vista Lift, NVL919IB- See Enclosure 16 for Literature and Description

Part 3

- 2.1 Warranty on completed vehicle follows:
- Chassis: 3 year or 36,000 miles
 - Bus Conversion: 1 year or 12,000 miles.
 - Braun Lift: 2 year parts and labor, 3 additional years parts only
 - Supplemental AC system: 2 years, unlimited miles
 - Add-on components: Minimum 1 year or 12,000 miles unless stated above
- 2.2 Warranty on basic vehicle structure
- Bus Structure: 6 year or 60,000 miles
 - Undercoating: 5 year limited
- 2.3 As stated in explanations above

Part 5

All required forms 1-10 and No debt affidavit are signed and are at the back of Addendum **2**.

Complete Altoona Test report for base bid is at Enclosure 17.

Miscellaneous enclosures at Enclosure 18

- ISO 9001:2000
- Goshen DBE
- FMVSS compliance
- Buy America

Please contact us immediately at (800) 282-7981 if any additional documentation is required.
Thanks again for your consideration!

Sincerely,

A handwritten signature in black ink, appearing to read "D. M. Clawson, Jr.", written in a cursive style.

David M. Clawson, Jr.
MidAtlantic Representative
dclawson@nationalbussales.com

Price for each complete van with 2 wheelchair spaces	\$ <u>54,639.00</u> each	20	\$ <u>1,092,780.00</u>
--	--------------------------	----	------------------------

** Award will be made in accordance with the low bid meeting the required specifications for the above

OPTION PAGE

OPTION A:	NON ACCESSIBLE	\$ <u><483.00></u> each	20	\$ <u><9,660.00></u>
OPTION B:	FIXED ROUTE PACKAGE /Graphics Upgrade	\$ <u>7,384.00</u> each	20	\$ <u>147,680.00</u>
OPTION C:	PARATRANSIT PACKAGE	\$ <u>497.0</u> each	20	\$ <u>9,940.00</u>
OPTION D:	CLOTH SEATS	\$ <u>645.00</u> each	20	\$ <u>12,900.00</u>
OPTION E:	FLIP UP ARMREST FOR PASS. SEATS	\$ <u>780.00</u> each	20	\$ <u>15,600.00</u>
OPTION F:	EXTENDED BODY W/ FRONT LIFT OPTION.	\$ <u>3,897.00</u> each	20	\$ <u>77,940.00</u>
OPTION G:	CHILD RESTRAINT SEAT	\$ <u>698.00</u> each	20	\$ <u>13,960.00</u>
OPTION H:	TRAFFIC ALERT	\$ <u>496.00</u> each	20	\$ <u>9,920.00</u>
OPTION I:	SECURITY CAMERA	\$ <u>2,540.00</u> each	20	\$ <u>50,800.00</u>
OPTION J:	SECURITY CAMERA PLAYBACK SYSTEM	\$ <u>2,434.00</u> each	20	\$ <u>48,680.00</u>
OPTION K:	FULL BUS BODY PAINT	\$ <u>2,994.00</u> each	20	\$ <u>59,880.00</u>
OPTION L:	3/4 BODY PAINT w/ EXPANDED GRAPHICS	\$ <u>2,351.00</u> each	20	\$ <u>47,020.00</u>
OPTION M:	VEHICLE SKIRT PAINTING	\$ <u>994.00</u> each	20	\$ <u>19,880.00</u>
OPTION N:	FARE BOXES FOR VEHICLES	\$ <u>1,274.00</u> each	20	\$ <u>25,480.00</u>
	Diamond MFG: Model #XV	\$ <u>2,154.00</u> each	20	\$ <u>43,080.00</u>
	Diamond MFG: Model #E-5	\$ <u>1,376.00</u> each	20	\$ <u>27,520.00</u>
	Main Fare Box: Model# M-4			
OPTION O:	TALKING BUS	\$ <u>9,800.00</u> each	20	\$ <u>196,000.00</u>
OPTION P:	VISta LIFT	\$ <u><382.00></u> each	20	\$ <u><7,640.00></u>
OPTION Q:	ONLINE INSPECTION SERVICES	\$ <u>394.00</u> each	20	\$ <u>7,880.00</u>
OPTION R:	SHOULDER BELTS	\$ <u>2,148.00</u> each	20	\$ <u>42,960.00</u>

TOTAL			\$ <u>1,932,600.00</u>
--------------	--	--	------------------------