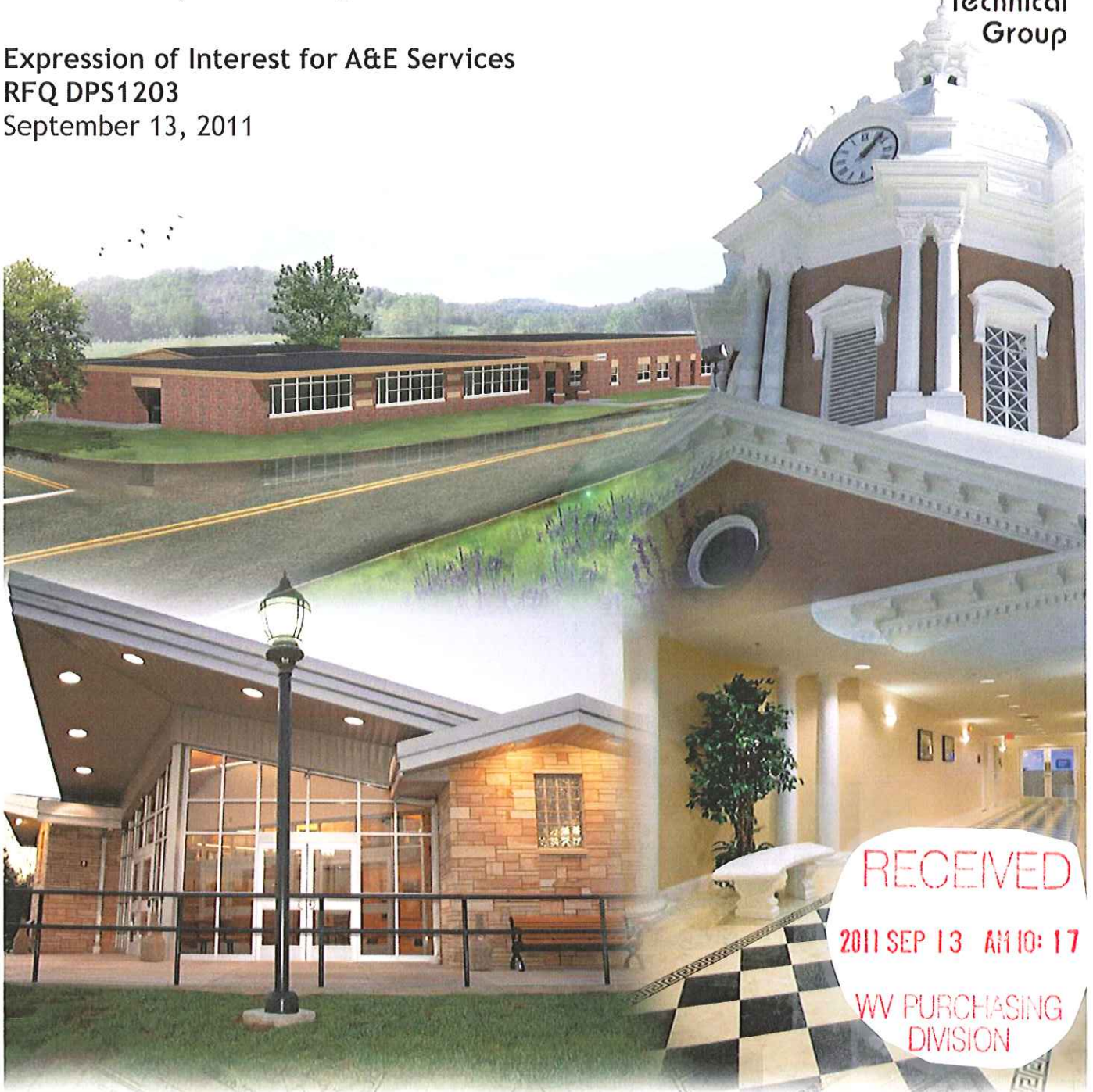


WV State Police
Medical Examiner Building Renovation
Charleston, West Virginia



**Chapman
Technical
Group**

Expression of Interest for A&E Services
RFQ DPS1203
September 13, 2011



RECEIVED

2011 SEP 13 AM 10:17

WV PURCHASING
DIVISION

ARCHITECTURE

SCHOOLS AND CLASSROOMS • GOVERNMENT FACILITIES • RECREATION FACILITIES
INDUSTRIAL BUILDINGS • AIRPORT TERMINALS AND SUPPORT FACILITIES • OFFICE BUILDINGS
HISTORIC RENOVATION AND RESTORATION • COMPUTER MODEL BUILDING AND RENDERING



September 13, 2011

Ms. Tara Lyle
WV Department of Administration
Purchasing Division
Building 15
2019 Washington Street, East
Charleston, West Virginia 25305-0130

**Re: A/E Services for State Police
Medical Examiner Building
Renovation - RFQ DPS2103**


Dear Ms. Lyle:

This fall, students at the Smithville Elementary School will enjoy classes in their new nine-classroom addition. Designed by Chapman Technical Group architect Tom Cloer, AIA, the \$3.2 million project was completed 28% under budget and also included a multi-purpose room with kitchen, a media center, and an office suite. By any measure, the project has been an outstanding success.

Chapman Technical Group has quietly been building a reputation for developing quality architectural projects. Our projects include the new rest areas for the Department of Transportation that are being constructed along West Virginia's interstates, the 24,000 square-foot courthouse annex in Upshur County, and the renovation of old retail space for the Beckley Water Company. We are currently designing renovation projects for the ski lodge buildings at Canaan Valley Resort State Park and will soon design the renovation of a 39,000 square-foot building for the Department of Transportation.

The reason for our success is simple. Sound approach. Solid delivery. Budgets are always tight, schedules are always too short. You need an architect that understands these realities and works with you to optimize your project. That's what we do at Chapman Technical Group. For your project, we will team with CMA, who will provide all mechanical, electrical and plumbing design. We would very much appreciate a personal interview to further discuss your project. Meanwhile, if you have any questions or need additional information, please contact me.

Sincerely,
CHAPMAN TECHNICAL GROUP


Joseph E. Bird, ASLA
Vice President

200 Sixth Avenue
St. Albans, WV 25177

304.727.5501
FAX 304.727.5580

Buckhannon, WV
Martinsburg, WV

www.chaptech.com



Chapman
Technical
Group

1

Overview & Awards

2

Relevant Project Experience

3

Chapman Technical Group Resumes

4

CMA Profile & Resumes

5

References

Company Overview



Chapman Technical Group's St. Albans Office

Chapman Technical Group is a full-service consulting firm with offices in St. Albans, Buckhannon, and Martinsburg, West Virginia offering an extensive range of professional architectural, engineering, interior design and landscape architectural services. Established in 1984, Chapman Technical Group has steadily grown to a diverse firm of professionals, many of whom were educated in West Virginia colleges and universities. We have achieved an outstanding reputation for providing high-quality design projects, while meeting client schedules and budgets and have received numerous awards for our work.

Our facilities are both state-of-the-art and architecturally significant. Our St. Albans office is a former post office and is now on the National Register of Historic Places.

Chapman Technical Group offers a broad range of professional services.

- Airport Design
- Architecture
- Civil Engineering
- Fire Pumping & Protection
- Interior Design
- Landscape Architecture
- Recreational Facilities
- Roads, Highways, & Bridges
- Site Development
- Space Planning
- Surveying
- Water & Wastewater Systems

Awards



AMERICAN INSTITUTE OF ARCHITECTS - MERIT AWARD FOR EXCELLENCE IN ARCHITECTURE, 2009 - Interstate 79 Rest Areas.

AMERICAN SOCIETY OF CIVIL ENGINEERS - NATIONAL - SUPERIOR EMPLOYER AWARD, 2009, Support of Young Professionals in the Private Sector.

AMERICAN COUNCIL OF ENGINEERING COMPANIES-WV - ENGINEERING EXCELLENCE AWARD, 2009, Gold Award - Special Projects Category for the Mercer County Airport Runway Safety Area Project.

AMERICAN INSTITUTE OF ARCHITECTS - HONOR AWARD FOR EXCELLENCE IN ARCHITECTURE, 2008 - Upshur County Courthouse Restoration and Renovations.

AMERICAN COUNCIL OF ENGINEERING COMPANIES-WV - ENGINEERING EXCELLENCE AWARD, 2008, Bronze Award - Wastewater Category for the Spring Run State Fish Hatchery Improvements.

AMERICAN COUNCIL OF ENGINEERING COMPANIES-WV - ENGINEERING EXCELLENCE AWARD, 2007, Silver Award - Structures Category for the Mercer County Airport Runway Safety Area Project.

GARY KING COMMUNITY SERVICE AWARD, 2006.
GOOD SCOUT RECIPIENT, 2005.

AMERICAN COUNCIL OF ENGINEERING COMPANIES-WV - ENGINEERING EXCELLENCE AWARD, 2003, Gold Award - Water Treatment Category for the City of Fairmont Water Treatment Plant Project.

AMERICAN COUNCIL OF ENGINEERING COMPANIES-WV - ENGINEERING EXCELLENCE AWARD, 2002, Gold Award - Transportation Category for the Raleigh County Memorial Airport Runway Rehabilitation Project.

WINNER - "COMMISSIONER'S ENGINEERING ACHIEVEMENT AWARD", 2000, The WVDOT - Division of Highways - Large Bridge Category for WV10 Buffalo Creek Bridge, Logan County, West Virginia.

FINALIST - "COMMISSIONER'S ENGINEERING ACHIEVEMENT AWARD", 1999, The WVDOT - Division of Highways - Large Roadway Category for WV10 Buffalo Creek - Taplin Project and 2000 for WV10 Buffalo Creek - Huff Junction Project, both in Logan County, West Virginia.

AMERICAN COUNCIL OF ENGINEERING COMPANIES-WV - ENGINEERING EXCELLENCE AWARD, 1999, Silver Award - Water and Wastewater Category, for the City of Beckley Piney Creek Wastewater Treatment Plant Project.

ENTREPRENEUR OF THE YEAR AWARD - FINALIST, 1999 and 2000, Sharon L. Chapman, President, was named one of twenty finalists in the West Virginia Area Entrepreneur of the Year Award. Sharon was recognized for leading Chapman Technical Group to become one of the most highly regarded engineering firms in the state after the death of her husband and company founder, Harvey R. Chapman.

"EXPECT THE BEST FROM WEST VIRGINIA AWARD", 1998, Charleston Regional Chamber of Commerce. The Expect the Best program was created to recognize West Virginia businesses and organizations that promote quality of life at home, work, and in the community so that individuals and organizations will implement quality principles and practices leading to unprecedented pride and economic growth in West Virginia.

HONOR AWARD, West Virginia Chapter of the American Society of Landscape Architects, 1994, Shrewsbury Street Area Redevelopment Plan, for excellence in planning and design projects. Joseph E. Bird, ASLA, Project Manager.

"GOVERNOR'S AWARD FOR ENGINEERING EXCELLENCE", 1990, The West Virginia Chapter of the American Public Works Association, in recognition of outstanding Public Works Engineering and Design of Projects within West Virginia.

DUNDEE CEMENT COMPANY ANNUAL DESIGN AWARD, 1988, Yeager Airport Taxiway Overlay Project. Harvey R. Chapman, P.E., Project Manager.

AUSTIN C. PALMER "OUTSTANDING FACILITY DESIGN AWARD", 1988, City of Bridgeport Swimming Pool Complex. Harvey R. Chapman, P.E., Project Manager.

"GEORGE WARREN FULLER AWARD", Harvey R. Chapman, P.E., 1984, Robert G. Belcher, P.E., 2001, and Sharon L. Chapman, 2005, Jeffery D. Ekstrom, P.E., 2010, American Water Works Association, for distinguished service in the water supply field in the State of West Virginia.



Ritchie County Schools

134 South Penn Avenue
Harrisville, WV 26362

The design goal for this project was to significantly improve the health, safety and welfare of the students and staff of Smithville Elementary School. The project began by demolishing two buildings in the existing four building complex and designing a new classroom wing and a new kitchen addition adjacent to the remaining buildings. The new additions were designed to join with the existing classroom wing and multipurpose building to create a single cohesive facility, under one roof.

The new school will provide access control and better security, new HVAC systems and better Indoor Air Quality, compliance with ADA/ABA

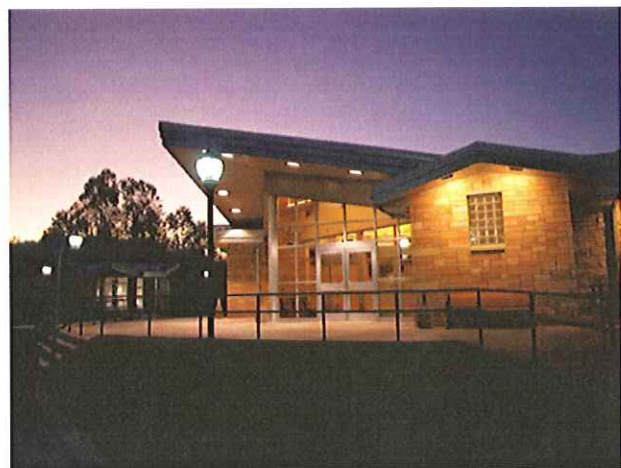
requirements and the modern technology and amenities typical of today's schools. The renovations and additions to this school will have a direct impact on improving the learning environment for the students and improve the overall functionality of the school.



Burnsville Rest Areas

I-79, Mile Marker 86
West Virginia

The Burnsville Rest Areas are the first of the Standard Rest Areas to be built for the State of West Virginia. With dual sided men's and women's facilities, the structures are intended to meet the anticipated traffic load for twenty years from the date of design. They utilize materials native to the state, including smooth cut and rough stone, and a tern coated stainless steel roof system. A warm, but high-tech, Appalachian imagery greets the weary traveler, encouraging a more safe and rested trip. Low maintenance, but highly durable materials were used, including stone, stainless steel, glass, aluminum, wood, polished ground faced CMU, and epoxy terrazzo. Separate maintenance and vending buildings complement the main structures on the Northbound and Southbound sides.





Upshur County Courthouse Complex

AIA Honor Award 2008

Upshur County Commission

38 West Main Street
Buckhannon, West Virginia 26201

Since the design and construction of the courthouse annex in 1995, Chapman Technical Group has been involved in several improvement and restoration projects at the Courthouse in Buckhannon. In 2005, a lift was installed and the plaza renovated to make the original courthouse accessible. In 2006, the Courthouse dome and clock tower were completely restored. In 2007, the Courthouse portico stonework was restored, and in 2008 the work was honored by the AIA/WV for Excellence in Architecture.



Dome Restoration Detail



Upshur County Commission

38 West Main Street, Room 302
Buckhannon, West Virginia 26201

Project included the complete design of a 24,000 square foot, 3-story brick building as an annex to the existing courthouse. The new building design had to be sensitive to the existing building architecture. A skywalk was used to connect the two buildings for circulation and accessibility to the second floor of the existing courthouse. The building was designed with consideration for future expansion. Also included in the project was space planning and interior design for the different departments of the Upshur County government such as the county assessor, sheriff, prosecuting attorney, county clerk, magistrates and magistrate's courtroom, jury room, tax department, and county commission meeting room.



Beckley Water Company Office Renovations

95008



Before Renovations



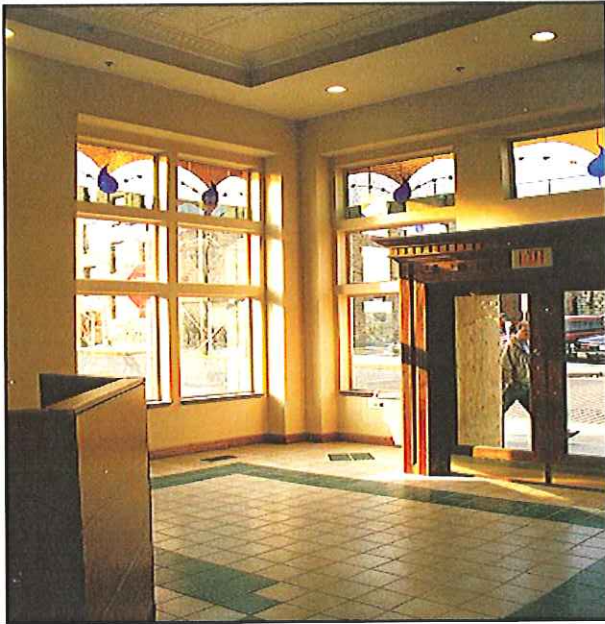
After Renovations

Beckley Water Company

Post Office Drawer U
Beckley, West Virginia 25801

Design and construction observation services for renovations to the existing Water Company offices and an expansion of those offices into an adjacent building. The interior spaces were restored to the original 1930's configuration with high ceilings and an open mezzanine. An original pressed tin ceiling which was badly damaged during previous renovations was replaced with a new ceiling of the same style. Facade renovations included traditional store-

front design elements along with the introduction of stained glass transoms windows. The lobby area included the introduction of a new open office system. Mechanical and electrical systems for the entire building were replaced along with the installation of new sprinkler and fire alarm systems. The renovations were phased so that all operations of the Water Company were maintained during the construction process.



Beckley Water Company

Post Office Drawer U
Beckley, West Virginia 25801

Design and construction observation services for a renovation to the existing Water Company offices and an expansion of those offices into an adjacent building. The interior spaces were restored to the original 1930's configuration with high ceilings and an open mezzanine. An original pressed tin ceiling which was badly damaged during previous renovations was replaced with a new ceiling of the same style. Facade renovations included traditional storefront design elements along with the introduction of stained glass transoms windows. The lobby area included the introduction of a new open office system. Mechanical and electrical systems for the entire building were replaced along with the installation of new sprinkler and fire alarm systems. The renovation was phased so that all operations of the Water Company were maintained during the construction process.



Roark Sullivan Lifeway Center Veterans' Transitional Living Center and Service Center

05036



Roark Sullivan Lifeway Center

507 Leon Sullivan Way
Charleston, West Virginia

This 3,400 s.f. facility houses the Veterans Program and provides accommodations for 12 men in single room occupancies, geared to support veterans who are experiencing homelessness. The program provides housing and case management support, assisting men in the program to work toward self-sufficiency and community living. The design of the building supports that goal in providing modest bedrooms in favor of more spacious communal areas, thus providing the men with a space of their own while encouraging interaction with the other men in the program. A communal kitchen, laundry room, dining area, and two living and entertainment areas support the idea of interaction and self-sufficiency.





Buckhannon City Hall Addition and Renovation

94063



City of Buckhannon

70 East Main Street
Buckhannon, West Virginia 26201

Project involves all design and space planning for a 3,000 square-foot addition and renovation of the 6,800 square-foot existing city hall facility. The addition includes council chambers, computer room, restroom facilities and office space. Project included all structural, mechanical, and electrical engineering.

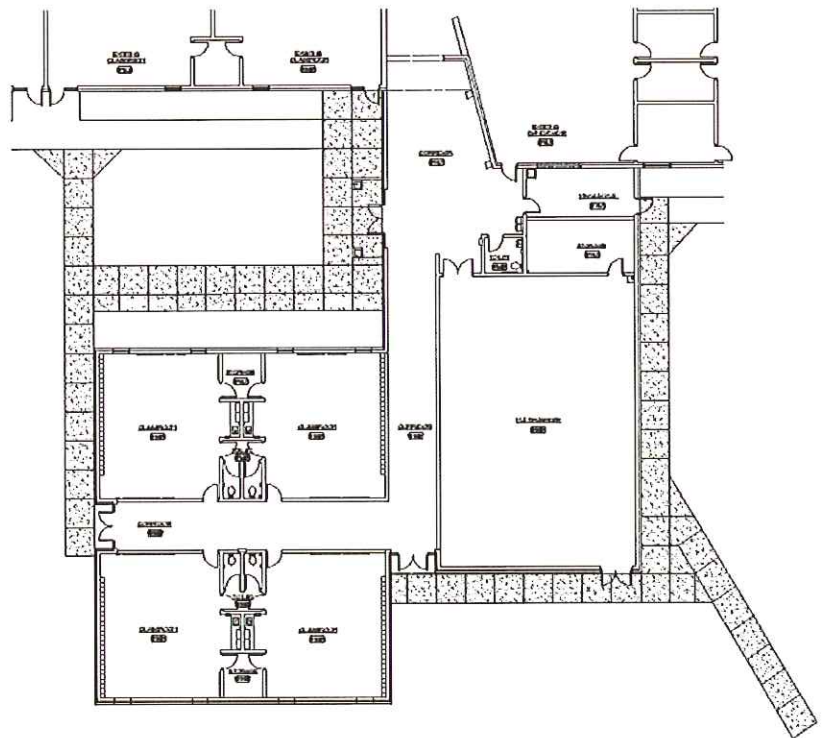




Logan County Board of Education

506 Holley Avenue
Logan, West Virginia 25601

Project involves all design and space planning for a 9,360 square-foot addition to the existing Man K-8 school facility. The addition includes four new classrooms, a 2,400 square-foot multipurpose room, ADA compliant restroom facilities, and a small landscaped courtyard. Project included all structural, mechanical, and electrical engineering. The design and construction was accomplished in 10 months and nearly 15% below budget.





Natural Resource Partners, L.P.

1035 Third Avenue, Suite 300
Huntington, West Virginia 25727

Natural Resource Partners, L.P., wanted to update their image with a renovation of their office space in the Radisson Hotel in Huntington and turned to Sharon Chapman and Chapman Technical Group to provide interior design services. The renovation was accomplished in two phases starting in 2003 and finishing in early 2005. The 15,000 square-foot project included floor plan modifications, as

well as new finishes and furnishings. The result is an ultra-modern look with a feeling of openness and spaciousness. The modern furnishings were provided by Contemporary Galleries and the unique carpet design was provided by Patcraft.

Interior Design



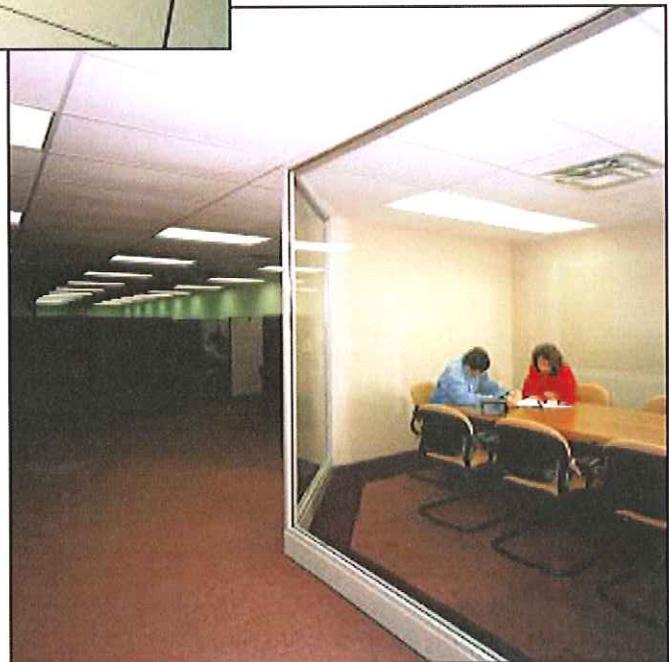
City National Bank Operations Center

95026



City National Bank
308 Goff Mountain Road
Cross Lanes, West Virginia 25313

Project included interior and exterior renovations of an 8,000 square foot fabric shop into a high-tech check imaging operations center. Space planning was provided for open office systems, private offices, as well as main frame room, transport room and print room. Interior design and furniture selections were also provided. The exterior facade was renovated to complement the style of other City National Bank facilities.





Mason County Health Department Clinic

98062



Mason County Commission

200 Sixth Street
Point Pleasant, West Virginia 25550

Point Pleasant is a charming, quaint town having a colonial historic character. In the center of town, at the intersection of Viand Street and Fifth Street, is the new Mason County Health Department building. The building was needed because the health department had outgrown their old space and to accommodate persons with disabilities, since the old clinic was located on the third floor of the courthouse annex. Chapman Technical Group designed the building to fit within the historical atmosphere of Point Pleasant. The style of the building is refined colonial and includes elements such as dormers, cornice moldings, brick quoins, door mantels, pilasters, and decorative window heads. The entrance of the building has a pediment with a medallion of garland leaves which is a



reference to the health/medical profession. The 5,000 square foot building has exam rooms, offices for the staff, a conference room, kitchen, x-ray/lab room, accessible restrooms, and a play area in the waiting room for younger children.



Central West Virginia Regional Airport Authority

100 Airport Road, Suite 175
Charleston, West Virginia 25311

Design and construction administration for a \$3.5 million Terminal Expansion and Renovation Project at Yeager Airport in Charleston. The project consisted of four major project goals: 1) the renovation of interior public spaces in the Terminal Building; 2) the expansion of the Ticket Lobby and Passenger lobby areas; 3) the replacement of the two existing passenger leading bridges; and 4) the upgrade of the inbound baggage delivery system. Chapman Technical Group served as a Consultant to TRA.BV Architects of Seattle, Washington, and

provided civil, structural, mechanical and electrical engineering. In the Ticket Lobby, a new vaulted ceiling combines with new windows on the east end of the lobby to provide a sense of openness. New finishes such as ceramic tile and carpet, ensure long term durability. Inlaid in the tile at the west end of the Ticket Lobby is a tile compass rosette and enlarged photographs of the West Virginia scenes, all help in giving the airport a regional identity.



SHARON L. CHAPMAN
President
Interior Designer

EDUCATION

University of Charleston, Carleton Varney Department of Art and Interior Design, BA, Interior Design, 1993

REGISTRATION

Allied Member, ASID

PROFESSIONAL HISTORY

July 1996 to Present: Chapman Technical Group
President and Interior Designer.

January 1991 to July 1996: Chapman Technical Group
Executive Vice President and Interior Designer.

20 years professional experience.

PROJECT EXPERIENCE

Space planning, interior design, material selections and furniture layouts for new and renovation projects including a courthouse annex, city hall renovations and other public buildings, private offices, commercial facilities, recreation facilities, industrial buildings, and residential properties. Also involved in building renovation feasibility studies and use analyses, and building facade renovation projects.

AWARDS

University of Charleston, Academic Achievement Award for Art and Design
Finalist, 1999 Entrepreneur of the Year Award
Finalist, 2000 Entrepreneur of the Year Award
St. Albans Renaissance Group, 2002 Business Person of the Year
Junior Achievement Chairman's Award, 2002-2003
St. Albans Renaissance Group, 2005 Appreciation Award
George Warren Fuller Award, 2005
Thomas Memorial Foundation Quiet Hero Award, 2009

AFFILIATIONS

Allied Member, American Society of Interior Designers
Rotary, St. Albans, West Virginia - Past President 2002-2003
Member, West Virginia Chamber of Commerce
Member, Charleston Area Alliance - Honorary Board Director
Member, Putnam County Chamber of Commerce
Member, St. Albans Chamber of Commerce
Member, Contractor's Association of West Virginia
Board of Directors, Thomas Memorial Hospital Foundation
AWWA West Virginia Section
Member, STARDA Board - St. Albans
BB&T Advisory Board, Putnam County
Board of Directors - Gabriel Project of West Virginia



JOSEPH E. BIRD, ASLA
Senior Vice President
Project Manager

EDUCATION

West Virginia University, BSLA, 1978

REGISTRATION

Landscape Architect, West Virginia, 1981

**PROFESSIONAL
HISTORY**

August 1985 to Present: Chapman Technical Group
Senior Vice President and Project Manager.

May 1978 to August 1985: Kelley, Gidley, Blair & Wolfe, Inc.
Landscape Architect and Project Manager.

Mr. Bird is a project manager and registered landscape architect. His experience ranges from large site development projects to the management of multi-discipline and architectural projects.

33 years professional experience.

**PROJECT
EXPERIENCE**

Site Development: Site planning and project management for numerous projects throughout West Virginia ranging from small campus sites to large sites for commercial, government, industrial, and institutional development. Projects include military complexes, campuses, public housing developments and other public facilities.

Parks and Recreation: Projects include swimming pools, bathhouses, cabins and support facilities for the West Virginia Division of Natural Resources and similar facilities for county and municipal park systems. Also involved in the design of facilities such as softball fields, fishing access facilities, recreation facilities for prisons, as well as passive recreation areas for public and private clients.

Miscellaneous: Other project experience includes the urban planning and development, streetscape design, roadway and storm drainage projects, as well as the project management of numerous major architectural projects throughout West Virginia.

AFFILIATIONS

West Virginia Chapter of the American Society of Landscape Architects

AWARDS

Honor Award for Shrewsbury St. Redevelopment Plan
West Virginia Chapter of American Society of Landscape Architects



DALE E. WITHROW, AIT
Project Coordinator, Department Manager
Architecture

EDUCATION

West Virginia Institute of Technology, AS, Drafting and Design, 1975.

PROFESSIONAL HISTORY

November 2000 to Present: Chapman Technical Group
Project Coordinator/Department Manager.

March 1993 to August 2000: The HDMR Group, Inc.
Project Coordinator.

February 1990 to March 1993: AFAB Services
Owner - Designer/Drafter.

Prior to 1990 Mr. Withrow worked with several architectural and engineering firms as an employee and independent consultant.

From 1978 to 1987 he was a Facilities Planner for the Kanawha County Board of Education.

Mr. Withrow is a Project Coordinator involved in all aspects of a wide variety of architectural projects. He is also Manager of the Architecture Group.

37 years professional experience.

PROJECT EXPERIENCE

Project Design and Management: Experience ranges from drafting, detailing and design through construction observation and project management of numerous building projects in West Virginia, Kentucky and North Carolina including:

- Residential/Housing
- Governmental Facilities
- Hospital/Healthcare Facilities
- Public School Facilities
- College Athletic Facilities
- Hotel/Hospitality Facilities
- Airport Support Facilities
- Historic Preservation
- Military Support Facilities/Armories
- Grocery and Drug Chain Stores
- Industrial Plant/Laboratory Facilities
- Office Buildings
- Banking Facilities
- Americans with Disabilities Act Assessment and Implementation
- Public Safety Facilities

AFFILIATIONS

Certified Architect-in-Training, State of Arizona
Associate Member WVAIA
President, St. Albans Business and Community Development Group
Vice Chair, Friends of the Alban Theatre
Board Member - St. Albans Chamber of Commerce
Chairman, St. Albans Blueprint Communities



PHILLIP A. WARNOCK, NCARB, AIA
Project Architect

EDUCATION

The University of Tennessee, BArch, 1995

REGISTRATION

Architect, West Virginia, 2003
Architect, Tennessee, 2002

PROFESSIONAL HISTORY

September 2003 to Present: Chapman Technical Group
Project Architect.

June 2002 to July 2003: ZMM
Architect.

June 1995 to May 2002: Lockwood Greene
Intern Architect.

August 1991 to July 1993: Omni Associates
Architectural Draftsman.

20 years professional experience with additional experience in construction, interior design and developing.

PROJECT EXPERIENCE

Project Participation and Design: Experience ranges from design, detailing and drafting through project management and construction administration of building projects in various states, including West Virginia, Tennessee, Kentucky and South Carolina. Project experience includes:

- Public School Facilities
- Community Centers
- Recreational Facilities
- Aviation Facilities
- Health Care/Hospice Facilities
- Medical and Psychiatric Clinics
- Pharmaceutical Facilities
- Research and Development Labs
- Office Buildings
- Rest Areas and Welcome Centers
- Historic Preservation
- Historic Renovation/Additions
- Adaptive Reuse
- Governmental Facilities
- Military Support Facilities/Armories
- Multi-Family Housing
- ADA Assessments
- HUD 811, 202 and ECHO Facilities
- Small Cities Block Grants
- Public Safety Facilities

AFFILIATIONS

National Council of Architectural Registration Boards (NCARB)
American Institute of Architects (AIA)

AWARDS

2008 AIA West Virginia Honor Award for Excellence in Architecture
For the historic preservation of the Upshur County Courthouse.

2010 AIA-West Virginia Merit Award for Achievement in Architecture
For the I-79 Rest Areas in Burnsville



W. THOMAS CLOER, III, AIA, NCARB
Project Architect

EDUCATION

University of Tennessee, BArch, 2001

REGISTRATION

NCARB Registered Architect, 2009
IDP Program completed.

**PROFESSIONAL
HISTORY**

October 2006 to Present: Chapman Technical Group
Project Architect and Architectural Designer

2001-2006: NVisions Architect
Architect Intern and Architectural Designer

10 years professional experience.

**PROJECT
EXPERIENCE**

Experience ranges from drafting, detailing and design through project management and construction administration of building projects throughout West Virginia including the following project types:

Public School Facilities
Government Facilities
Office Buildings
Medical Office Facilities
Single Family Housing
Multi-family Housing
Recreational Facilities
ADA Assessments
Site Planning

AFFILIATIONS

American Institute of Architects
City of St. Albans Property and Maintenance Board, Member
City of St. Albans Historic District Committee, Member
Boy Scouts of America Troop 250 Committee Member



DAVID C. HOY, P.E.
Civil/Structural Engineer

EDUCATION

West Virginia University, BSCE, 2006

REGISTRATION

P.E., West Virginia, 2011

**PROFESSIONAL
HISTORY**

January 2007 to Present: Chapman Technical Group
Civil Engineer

Summer 2005: Advantage Home and Environment

Assisted structural engineer with home inspections, and report preparation.

4 years professional experience.

**PROJECT
EXPERIENCE**

Structural: Investigation, analysis, and design of various building structural systems, including foundation design. Review shop drawings and performs periodic site visits.

Civil: Design of highways, bridges, and airport improvements projects throughout West Virginia.

AFFILIATIONS

Chi Epsilon, National Civil Engineering Honor Society

ASCE, Member

WV Section YMF, Treasurer



ROBERT D. DINSMORE
Project Designer

EDUCATION

West Virginia University, BSLA, 2010

**PROFESSIONAL
HISTORY**

June 2010 to Present: Chapman Technical Group
Project Designer.

Fall 2008 to Fall 2009: West Virginia University
Teaching Assistant, Intro to Landscape Architecture Graphics

Fall 2009 to Spring 2010: West Virginia University
Teaching Assistant, History of Landscape Architecture

Summer 2008: Austin Outdoor Landscape Professionals
Landscape Architecture Intern,

2006 to 2007: Austin Outdoor Landscape Professionals
Project Manager

1 year of professional experience. Mr. Dinsmore is responsible for the design and development of urban design projects, parks and recreation projects, and landscape design.

**PROJECT
EXPERIENCE**

Urban Design: Designed and developed a master plan as part of his senior thesis for the Boston waterfront development.

Recreation Design: Developed master plans and designs for various facilities as part of scholastic studies.

Landscape Design: Designed and installed numerous landscape plans for high end residential and resort projects constructed in Florida.

AFFILIATIONS

American Society of Landscape Architects WV Chapter (Chapter Director)
Sigma Lambda Alpha Landscape Architecture Honorary (WVU President)
G.E.R.M.A.N. Club of Virginia Tech
Sunnyside Up Campus Neighborhoods Revitalization Corporation (Volunteer)

AWARDS

ASLA Student Honor Award Winner 2010
ASLA Student Merit Award Nominee 2010

C O R P O R A T E P R O F I L E



Clingenpeel/McBrayer & Associates, Inc.

Services

Clingenpeel/McBrayer & Associates is a West Virginia based small business firm, providing services in the areas of HVAC, plumbing, fire protection and electrical engineering. CMA's founders have long believed in the philosophy that a successful project requires a comprehensive approach. This includes all traditional facets of project planning, starting with master planning, working closely with the client, developing the completed construction documents, bidding the project and contract administration. However, our depth of expertise goes far beyond the traditional services. From developing design criteria for owners to designing the mechanical and electrical systems for the West Virginia DEP Consolidated Office Building, the first LEED certified building in the state, CMA is a proven leader in providing engineering services in the design-build delivery method. As we have been involved in LEED Certification and other "LEED-oriented" ventures for several years, we attempt to incorporate the most efficient and sustainable "green" designs in all of our projects.

History

Since 1986, Clingenpeel/McBrayer & Associates has provided services on numerous projects of varying size and complexity. Clients include architects, industrial companies, governmental agencies, contractors, engineers, developers and private organizations. With offices strategically located in Charleston and Morgantown, our professional staff can provide clients with exceptional hands-on engineering services for planning, meetings, site visits and construction administration without effecting the project's budget.

Commitment

Clingenpeel/McBrayer & Associates' submittal is based on your needs and our experience. Our firm has the experience, service and quality work to create a successful project. We are committing senior design professionals in order to assure you receive top priority. We have extensive experience with projects of this nature. Examples of projects for which we were the Engineer are listed in this proposal.

In 1987, computer aided drafting stations were added to provide the best quality and engineering services for our clients. We are currently operating AutoCad 2009. Our firm is constantly monitoring the latest technology, the cost effects and the end results to the final project.

Present staffing allows CMA to complete work in a timely manner without limiting our ability to perform our ongoing work. The staff of CMA is large enough to handle any size project, yet small enough for direct input and supervision by key personnel.



Clingenpeel/McBrayer & Associates, Inc.

824 Cross Lanes Drive
Charleston, WV 25313
(304) 343-0316 tel
(304) 343-5146 fax

5 Riddle Court
Morgantown, WV 26505
(304) 598-2558 tel
(304) 598-2472 fax

w w w . c m a w v . c o m

Professional Affiliations



Leadership in Energy &
Environmental Design
(LEED)



U.S. Green Building
Council
(USGBC)



American Society of
Heating, Refrigerating and
Air Conditioning Engineers,
Inc.,
(ASHRAE)



American Institute of
Architects— WV Chapter
Affiliate Member
(WVAIA)



National Fire
Protection Association
(NFPA)

ASPE

American Society Of
Plumbing Engineers
(ASPE)



MasterSpec
Specifications
(ARCOM)



The
LIGHTING
AUTHORITY (IES)

Illuminating
Engineering Society



WV Society of
Healthcare Engineers
(WVSHE)



Business Partner



International Code Council (ICC)



P R O F I L E

Timothy Cox, P.E., NCEES
President
Mechanical Engineer

(304) 598-2558
tcox@cmawv.com

EDUCATION

University of Colorado
Boulder, Colorado
Degree: Mechanical Engineering B.S.

REGISTRATIONS/PROFESSIONAL AFFILIATIONS

Association of Energy Engineers-CBCP

Registered Professional Engineer in WV, VA, KY

CPD (Certified in Plumbing Engineering)

Member of ASHRAE

American Society of Plumbing Engineers

National Association of Fire Protection Engineers

WV Society of Healthcare Engineers

EXPERIENCE

Mr. Timothy Cox, President and Senior Mechanical Engineer of CMA Engineering brings 24 years of mechanical design experience to our clients. Mr. Cox has been project manager and project engineer for a variety of projects.

PROJECTS

West Virginia University
Open End Contract since 1999
Mountain Lair Plaza Renovations
Boreman HVAC/Plumbing/Fire Sprinkler
Upgrades
Soccer Stadium
Coliseum Life/Safety Renovations
Coliseum Locker Room Suites
Engineering Science Building Addition/
Renovations
Arnold Hall Fire Alarm/ FireSprinkler
Upgrades
Wrestling Training Facility

West Virginia University Hospitals
WV Eye Institute-MEP systems design for
new facility
Cheat Clinic-MEP design for new
clinical addition
WVUH Emergency Department-
HVAC, electrical, fire and
communication systems design for
new addition
Chestnut Ridge Hospital-various
MEPRenovations
Healthworks Rehab and Fitness -MEP
systems design for new facility

Mylan Pharmaceuticals, Morgantown, WV
Various projects including HVA plumbing,
fire sprinkler and controls for new office
building, fluid bed addition ,North plant
expansion, parking garage and weighing and
packaging.

CMA
ENGINEERING

Clingenpeel/McBrayer & Associates, Inc.

824 Cross Lanes Drive
Charleston, WV 25313
(304) 343-0316 tel
(304) 343-5146 fax

5 Riddle Court
Morgantown, WV 26505
(304) 598-2558 tel
(304) 598-2472

www.cmawv.com

P R O F I L E

Daniel Lee Ellars, P.E.
LEED AP

Principal
(304) 343-0316
dellars@cmawv.com

EDUCATION

West Virginia University Institute of Technology
Montgomery, West Virginia.
Bachelors of Science in Electrical Engineering

West Virginia State University
Institute, West Virginia
Bachelors of Science in Business Administration

REGISTRATIONS/PROFESSIONAL AFFILIATIONS

Registered Professional Engineer in West Virginia
National Fire Protection Association (NFPA)
Institute of Electrical and Electronics Engineers (IEEE)
American Society of Heating, Refrigerating and Air-
Conditioning Engineers (ASHRAE)

EXPERIENCE

Mr. Daniel L. Ellars, Electrical Engineer for Clingenpeel/
McBrayer & Associates, Inc. brings 19 years of
electrical design experience to our clients. Mr. Ellars
has been a project manager and project engineer for a
variety of projects including commercial and industrial
facilities as well as for both power and
tele-communications utilities.

PROJECTS

Educational Experience

Jackson County (WV) Schools—Electrical
Upgrades & Expansions
Talcott Elementary School—Electrical Design
Fairdale Elementary School—Electrical Design

Hospital Experience

West Virginia University / Ruby Memorial Hospital
West Virginia Eye Institute—Electrical systems
design for new facility.
Thomas Memorial Hospital—Electrical systems
survey, upgrades and documentation.
Standby emergency power engine
generator replacement.

Military Experience

West Virginia Army National Guard
Eleanor (WV) Maintenance Center—Electrical
systems design for new facility.
Elkins Readiness Center—Electrical systems design
or new facility

Industrial Experience

Mylan Pharmaceuticals
Mylan Office & Lab Buildings—various electrical
systems designs for new, existing and expanded
facilities including new 23kV/12kV switchyard
and grounding plain layout.



Clingenpeel/McBrayer & Associates, Inc.

824 Cross Lanes Drive
Charleston, WV 25313
(304) 343-0316 tel
(304) 343-5146 fax

5 Riddle Court
Morgantown, WV 26505
(304) 598-2558 tel
(304) 598-2472

w w w . c m a w v . c o m

P R O F I L E

James A. Kerns Mechanical/Electrical Designer

(304) 343-0316
jakerns@cmawv.com

EDUCATION

West Virginia State College
Institute, West Virginia
Degree: Bachelor of Science in Industrial
Technology/Building Construction

REGISTRATIONS/PROFESSIONAL AFFILIATIONS

Member of ASHRAE

EXPERIENCE

Mr. James A. Kerns has over 32 years experience in Mechanical and Electrical engineering design. He has been responsible for design projects in the educational, commercial, and health care fields.

Mr. Kerns has been a great asset to Clingenpeel/McBrayer & Associates. His knowledge and experience enables him to complete project designs in a clear and concise manner and in a timely fashion.

PROJECTS

Kanawha County Schools

George Washington High School-HVAC
Renovations

George Washington High School-Classroom
Additions

Horace Mann Middle School-HVAC Renovations

Elkview Middle School-Classroom Additions

Elkview Middle School-Fire Alarm System

Ruffner Elementary School-Classroom Additions

Point Harmony Elementary School-Activity Building

Concord College

Athens, West Virginia — various renovation projects throughout the campus, which include Twin Towers Fire Alarm, Twin Towers Elevator Renovation, Alexander Arts Center Chiller Replacement and new Chapel

U.S. Postal Service

Open End Contract Since 1993, which encompasses numerous Post Office Renovations, new Post Offices, and new Postal Maintenance Facilities. Mr. Kerns has been Project Manager for over 65 projects for the U.S. Postal Service.

Yeager Airport

New Parking Garages

New Emergency Generator

Electrical Upgrades

Fire Alarm System Upgrade



Clingenpeel/McBrayer & Associates, Inc.

824 Cross Lanes Drive
Charleston, WV 25313
(304) 343-0316 tel
(304) 343-5146 fax

5 Riddle Court
Morgantown, WV 26505
(304) 598-2558 tel
(304) 598-2472

www.cmawv.com

P R O F I L E

Matt Corathers, E.I. Mechanical Designer

(304) 598-2558
mcorathers@cma-wv.com

EDUCATION

West Virginia University
Bachelor of Science -Mechanical Engineering

PROFESSIONAL DEVELOPMENT

Successfully passed Fundamentals of Engineering
Exam

EXPERIENCE

Matt joined the staff of CMA Engineering in 2008
having previously worked for Whitman, Requardt
and Associates in Baltimore, MD.

PROJECTS

West Virginia University

Mechanical design for new two-story
child care facility

University High School, Morgantown, WV

Mechanical design for renovations/
upgrades to the HVAC systems

Randolph County Building

- Mechanical design for completion of two
story addition and modifications of the
existing second floor to be used by the
Family Court

Monongalia County Family Court

Mechanical design for renovations to
4,850sf in existing court facility

Veterans Hospital, Clarksburg, WV

Mechanical design for renovations to
Dental Lab

Monongalia General Hospital

Evaluation of kitchen gas systems
Mechanical design for renovations to
IT workroom cooling

The logo for CMA Engineering, featuring the letters 'CMA' in a large, serif font with a horizontal line underneath.

ENGINEERING

Clingenpeel/McBrayer & Associates, Inc.

824 Cross Lanes Drive
Charleston, WV 25313
(304) 343-0316 tel
(304) 343-5146 fax

5 Riddle Court
Morgantown, WV 26505
(304) 598-2558 tel
(304) 598-2472

w w w . c m a w v . c o m

P R O F I L E

Larry Weese Mechanical/Plumbing Designer

(304) 343-0316
lweese@cma.wv.com

EDUCATION

West Virginia University
Morgantown, West Virginia
Degree: Division of Forestry BS,MS

PROJECTS

Medical Facilities Experience Charleston Area Medical Center

Women & Children's Hospital- Renovations to
Emergency Room

Hess Medical Office Building-New Facility
Pinewood Medical Office Building-Renovations
Southern West Virginia Hospice-New Facility
NorthGate Doctor's Office Building-New Facility

WV Department of Health and Human Resources

Office of Chief Medical Examiner, Charleston
New Facility Mingo County

Emergency Response Facilities

Randolph County 911-New Facility
Mason County 911-New Facility
Raleigh County 911-New Facility
Orchard Manor Fire Station-New Facility

Industrial Experience

Standard Laboratories-Laboratory Addition
Dow Process Control-New Facility
Diamond Electric-Expansion

Commercial Experience

Bobcat of Advantage Valley-New Facility
Allegheny Springs Restaurant

PROFESSIONAL DEVELOPMENT

Various seminars and technical sessions

EXPERIENCE

Mr. Larry Weese, Mechanical Designer for Clingenpeel/McBrayer & Associates, Inc. brings 18 years of mechanical design and project management experience to our clients.



Clingenpeel/McBrayer & Associates, Inc.

824 Cross Lanes Drive
Charleston, WV 25313
(304) 343-0316 tel
(304) 343-5146 fax

5 Riddle Court
Morgantown, WV 26505
(304) 598-2558 tel
(304) 598-2472

w w w . c m a w v . c o m

Project Profiles



Jefferson County Community Center

CMA Engineering provided mechanical, electrical and plumbing design services for developing the design criteria for new 18,900sf community center which included gymnasium with bleacher seating, lobby area, activity rooms, office space, a full service kitchen, storage and comfort facilities.



Ayash Community Center, St. Albans

CMA Engineering provided design for HVAC, plumbing, fire sprinkler, fire alarm systems, communication systems, lighting and electrical power for new 26,900sf community center which included gymnasium, wrestling room, fitness room, locker rooms and an open area for aerobics, dance and gymnastics.



Jackson's Mill

CMA Engineering providing mechanical, electrical and plumbing design services for renovations to the Assembly Hall, Northern Panhandle Cottage, Lewis Cottage, Dining Hall and the Air Strip Buildings.



Canaan Valley Resort-Ski Base Lodge

CMA Engineering provided design services for the HVAC, electrical and plumbing systems for the new guest service facility.



North Bend State Park

CMA Engineering provided mechanical, electrical and plumbing design services for renovations to the Lodge.

Project Profiles



Beech Fork State Park

CMA Engineering providing mechanical, electrical and plumbing design services for 8 new cabins, a new bathhouse, 237 camping sites and sewage treatment system.



Snowshoe Mountain Resort

CMA Engineering provided design for HVAC, electrical, plumbing, fire alarm and fire sprinkler systems for new Allegheny Springs Lodge. CMA also provided engineering services for the fit-out of such restaurants as the Foxfire Grille, Junction Restaurant and Village Bistro located at the Village in Snowshoe.



Chief Logan State Park

CMA Engineering provided mechanical, electrical, plumbing and fire protection design services for the new lodge and the new conference center.



New River Gorge

CMA Engineering provided mechanical, electrical and plumbing design services for the new Visitors Center at the New River Gorge.



Cacapon State Park

CMA Engineering providing design services for the electrical renovations to the Lodge.

Project Profiles

Lighting



Kanawha Boulevard Lighting

CMA provided engineering services for the re-lighting of Kanawha Boulevard from the Patrick Street Bridge to the 35th Street Bridge in Kanawha City. This project included specifying of new light poles, arms and light fixtures.

CAMC 33rd Street Streetscape, Kanawha City.

As part of the expansion of the CAMC Memorial Division, 33rd Street was required to be re-aligned. CMA provided engineering services for design of the lighting along 33rd Street, providing a lighting design that welcomes visitors into the neighborhood.



Kanawha County Courthouse

CMA recently completed design of an exterior lighting renovation project for the Virginia side of the Courthouse which is listed on the National Historic Register. This project while adding lighting for security, highlights the architectural features of the entrances and light towers.

Ripley Streetscape

CMA Engineering provided engineering services for the streetscape of Court Street from Main Street to North Street transforming this into a pedestrian friendly area.



Charleston Municipal Auditorium

CMA Engineering provided electrical engineering services for replacement of the dimmer rack and renovations to the stage and front-house lighting systems.

Project Profiles

Lighting



Charleston Gateway Greenspace

CMA Engineering provided site lighting plan, details and specifications for new Greenspace park, property was previously a parking lot, located in downtown Charleston.

Summit Bechtel Family National Scout Reserve

CMA Engineering is currently providing electrical engineering design for the basic utility infrastructure for the new Boy Scout Camp at Mt. Hope, WV. Camp will accommodate approximately 50,000 campers, with multiple camp sites over the 10,600 acre reserve.



Kanawha County Schools

CMA provided electrical engineering services for the exterior lighting design for the football fields at Nitro High School, South Charleston High School, Sissonville High School, George Washington High School and St. Albans High School.

Williamson Streetscape

CMA Engineering provided electrical design services for the renovation of approximately 460 linear feet of streetscape. Enhancements included 14 pole-top light fixtures with convenience receptacles along both sides of the street and design of the electrical power system to accommodate future streetscape enhancement projects.



Alexander Arts Centre-Concord university

CMA provided electrical design services for the demolition of two dilapidated stage dimming systems, in the Studio Theater and Main Auditorium Theater, and replaced them with modern stage dimming equipment and lights.

Project Profiles



State of West Virginia House and Senate Offices
CMA is currently providing mechanical, and electrical design services for renovations to the first and second floors' HVAC systems at Building #1 at the State Capitol Complex.



Kimball War Memorial, Kimball, WV
CMA Engineering provided mechanical, electrical and plumbing design services for the restoration of the historic memorial which was destroyed by fire in 1991. Registered with the National Historical Society.



Davis Memorial Hospital
CMA Engineering has provided mechanical, electrical, plumbing, and fire protection engineering services for various projects at DMH including the new operating room suite, relocating endoscopy unit, updating the fire suppression system in the computer room and design of the clean room in the Pharmacy.



Independence High School, Raleigh County
CMA is currently providing mechanical, electrical, plumbing, fire alarm, data and telephone design services for the addition of six new classrooms, art studio and toilets. CMA also provided design for the renovation to the HVAC system.



Doddridge County Courthouse
CMA provided design services for the upgrades of the mechanical, electrical, plumbing, fire sprinkler /fire alarm and communication systems for the second and third floors of the facility.

Project Profiles

New Construction



West Virginia University Child Care Center
CMA Engineering provided the design of HVAC, fire sprinkler, fire alarm, plumbing, electrical lighting/power and communications systems for the new two story child care facility at 201 Laurel Street, Morgantown, WV.



Sissonville Middle School, Kanawha County
CMA Engineering provided mechanical, electrical, plumbing, sprinkler, and data/communication/alarm/control engineering design services for the new, approximately 80,000sf facility, consisting of administrative areas, commons, auditorium, media/technology, sixth, seventh and eighth grade educational areas, laboratories, special education, food services and physical education areas. CMA is currently providing design for the addition of the fifth grade wing.



Talcott Elementary School, Summers County
CMA Engineering provided construction documents for HVAC, plumbing, fire sprinkler, fire alarm, communication, lighting and electrical power systems for new 26,000sf elementary school, consisting of administration areas, pre-kindergarten to fifth grade classrooms, special education, art/music, multi-purpose, dining kitchen and toilet rooms.



Pikeview Middle School, Mercer County
CMA Engineering provided design of HVAC, plumbing, fire alarm, fire sprinkler, electrical, lighting, communications, audio/visual and CCTV systems for new 75,000sf middle school comprised of a main wing with offices and gymnasium and a three-story classroom wing.

Project Profiles

New Construction



WVANG Summersville Readiness Center

CMA Engineering provided engineering services for the design of mechanical, electrical and plumbing systems for the 42,000sf readiness center. This facility also features areas for use by the City of Summersville for events throughout the year.



NRAO Greenbank Observatory Visitor's Center

CMA Engineering provided mechanical, electrical, plumbing, fire protection and communication systems design for new visitor's science center.



Tamarack Caperton Conference Center

CMA Engineering provided mechanical, electrical, plumbing, fire protection and communication systems design for the 22,450sf addition to the Caperton Center. CMA provided engineering services for the original construction of the Tamarack facility.



Jefferson Place, Charleston, WV

CMA Engineering provided mechanical, electrical, plumbing and fire protection design services for new medical apartment complex consisting of 24 units of one, two and three bedroom apartments.

Project Profiles

New Construction Design Build



West Virginia University Intermodal Parking

CMA Engineering is provided engineering services to develop performance criteria data for a new intermodal parking facility located on the Health Sciences Campus in Morgantown, WV. The initial phase of the project is to create a 500 space parking garage expandable to 1500 spaces with offices, retail and storage space.



Morgantown Events Center

CMA Engineering provided engineering services for the criteria development and preparation of RFP for Design/Builders for new 80,000sf multi-purpose event center and parking structure.



Yeager Airport-Parking Garage

CMA Engineering provided mechanical, electrical and plumbing design services for developing the design criteria for the new design/build multi-tiered parking facility with new toll booths and employees comfort area.



WV Department of Environmental Protection

CMA Engineering provided mechanical, electrical, plumbing and fire protection design services for the design/build construction of the new consolidated DEP office in Charleston, WV. Building is a three-story facility of approximately 180,000sf with a 650 car parking area. This facility is registered as a **LEEDS construction project**.



Residence Halls-University of Charleston

CMA Engineering provided mechanical, electrical, plumbing and fire protection design services for the design/build of two new four-story Dormitories, constructed during the summers of 2004 and 2005. In 2006, CMA provided design for the addition of a wing to the second dormitory.

CMA
ENGINEERING

References

Mechanical/Electrical/Plumbing



Kanawha County Schools
3300 Pennsylvania Avenue
Charleston, WV 25302
Contact: Mr. Charles Wilson
(304) 348-6148



Yeager Airport
100 Airport Road
Charleston, WV 25311
Contact: Mr. Rick Atkinson
(304) 344-8033



Concord University
P.O. 1000
Athens, WV 24712
Contact: Mr. John Ferguson
(304) 384-5233



West Virginia University
979 Rawley Lane
Morgantown, WV 26505
Contact: Mr. Eric Rosie
(304) 293-2853



West Virginia University
979 Rawley Lane
Morgantown, WV 26505
Contact: Tony Napolillo
(304) 293-7478



Mylan Pharmaceuticals
P.O. Box 4310
Morgantown, WV 26504
Contact: Mr. J. J. Dotson
(304) 599-2595

References



1. Honorable Dick Callaway
City of St. Albans
Post Office Box 1488
St. Albans, WV 25177
(304) 727-2971
2. Mr. Bradley S. Leslie, P.E.
Assistant Chief
WV Division of Natural Resources
Parks & Recreation Section
324 4th Avenue
South Charleston, WV 25303
(304) 558-2764
3. Mr. William "Willie" Parker
County Administrator
Upshur County Commission
38 Main Street, Room 302
Buckhannon, WV 26201
(304) 472-0535
4. Mr. Dave Weekley
Director of Services
Ritchie County Schools
134 South Penn Avenue
Harrisville, WV 26362
(304) 643- 2991 ext. 223



State of West Virginia
 Department of Administration
 Purchasing Division
 2019 Washington Street East
 Post Office Box 50130
 Charleston, WV 25305-0130

Request for Quotation

RFQ NUMBER
DPS1203

PAGE
1

ADDRESS CORRESPONDENCE TO ATTENTION OF:
TARA LYLE
304-558-2544

VENDOR

RFQ COPY
 TYPE NAME/ADDRESS HERE

SHIP TO

WEST VIRGINIA STATE POLICE
 4124 KANAWHA TURNPIKE
 SOUTH CHARLESTON, WV
 25309 304-746-2141

DATE PRINTED	TERMS OF SALE	SHIP VIA	F.O.B.	FREIGHT TERMS
08/10/2011				

BID OPENING DATE: **09/13/2011** BID OPENING TIME **01:30PM**

LINE	QUANTITY	UOP	CAT NO	ITEMNUMBER	UNIT PRICE	AMOUNT
0001	1	JB		906-00-00-001		
ARCHITECT/ENGINEERING SERVICES, PROFESSIONAL EXPRESSION OF INTEREST (EOI) THE WEST VIRGINIA PURCHASING DIVISION FOR THE AGENCY, WV STATE POLICE, IS SOLICITING EXPRESSIONS OF INTEREST FOR PROFESSIONAL ARCHITECTURAL ENGINEERING DESIGN SERVICES TO RENOVATE THE OLD MEDICAL EXAMINER BUILDING AT THE WV STATE POLICE HEADQUARTERS LOCATED AT 725 JEFFERSON ROAD SOUTH CHARLESTON, WV 25309, PER THE ATTACHED BID REQUIREMENTS AND SPECIFICATIONS. TECHNICAL QUESTIONS MUST BE SUBMITTED IN WRITING TO TARA LYLE VIA MAIL AT THE ADDRESS SHOWN IN THE BODY OF THIS EOI, VIA FAX AT 304-558-4115, OR VIA EMAIL AT TARA.L.LYLE@WV.GOV. DEADLINE FOR ALL TECHNICAL QUESTIONS IS 8/26/2011 AT THE CLOSE OF BUSINESS. ANY TECHNICAL QUESTIONS RECEIVED WILL BE ANSWERED BY FORMAL ADDENDUM ISSUED BY THE PURCHASING DIVISION AFTER THE DEADLINE HAS LAPSED. CANCELLATION: THE DIRECTOR OF PURCHASING RESERVES THE RIGHT TO CANCEL THIS CONTRACT IMMEDIATELY UPON WRITTEN NOTICE TO THE VENDOR IF THE COMMODITIES AND/OR SERVICES SUPPLIED ARE OF AN INFERIOR QUALITY OR DO NOT CONFORM TO THE SPECIFICATIONS OF THE BID AND CONTRACT HEREIN.						

SEE REVERSE SIDE FOR TERMS AND CONDITIONS

SIGNATURE	TELEPHONE	DATE
TITLE	FEIN	ADDRESS CHANGES TO BE NOTED ABOVE

WHEN RESPONDING TO RFQ, INSERT NAME AND ADDRESS IN SPACE ABOVE LABELED 'VENDOR'



State of West Virginia
 Department of Administration
 Purchasing Division
 2019 Washington Street East
 Post Office Box 50130
 Charleston, WV 25305-0130

Request for Quotation

RFQ NUMBER
DPS1203

PAGE
2

ADDRESS CORRESPONDENCE TO ATTENTION OF:
TARA LYLE 304-558-2544

VENDOR

RFQ COPY
 TYPE NAME/ADDRESS HERE

SHIP TO

WEST VIRGINIA STATE POLICE

 4124 KANAWHA TURNPIKE
 SOUTH CHARLESTON, WV
 25309 304-746-2141

DATE PRINTED	TERMS OF SALE	SHIP VIA	F.O.B.	FREIGHT TERMS
08/10/2011				

BID OPENING DATE: 09/13/2011 BID OPENING TIME 01:30PM

LINE	QUANTITY	UOP	CAT. NO.	ITEM NUMBER	UNIT PRICE	AMOUNT
<p>BANKRUPTCY: IN THE EVENT THE VENDOR/CONTRACTOR FILES FOR BANKRUPTCY PROTECTION, THE STATE MAY DEEM THE CONTRACT NULL AND VOID, AND TERMINATE SUCH CONTRACT WITHOUT FURTHER ORDER.</p> <p style="text-align: center;">NOTICE</p> <p>A SIGNED BID MUST BE SUBMITTED TO:</p> <p style="text-align: center;">DEPARTMENT OF ADMINISTRATION PURCHASING DIVISION BUILDING 15 2019 WASHINGTON STREET, EAST CHARLESTON, WV 25305-0130</p> <p>THE BID SHOULD CONTAIN THIS INFORMATION ON THE FACE OF THE ENVELOPE OR THE BID MAY NOT BE CONSIDERED:</p> <p>SEALED BID</p> <p>BUYER:-----TL/32-----</p> <p>RFQ. NO.:-----DPS1203-----</p> <p>BID OPENING DATE:-----09/13/2011-----</p> <p>BID OPENING TIME:-----1:30 PM-----</p> <p>PLEASE PROVIDE A FAX NUMBER IN CASE IT IS NECESSARY TO CONTACT YOU REGARDING YOUR BID:</p>						

SEE REVERSE SIDE FOR TERMS AND CONDITIONS

SIGNATURE	TELEPHONE	DATE
TITLE	FEIN	ADDRESS CHANGES TO BE NOTED ABOVE

WHEN RESPONDING TO RFQ, INSERT NAME AND ADDRESS IN SPACE ABOVE LABELED 'VENDOR'



State of West Virginia
 Department of Administration
 Purchasing Division
 2019 Washington Street East
 Post Office Box 50130
 Charleston, WV 25305-0130

Request for Quotation

RFQ NUMBER
DPS1203

PAGE
3

ADDRESS CORRESPONDENCE TO ATTENTION OF:
TARA LYLE 304-558-2544

VENDOR

RFQ COPY
 TYPE NAME/ADDRESS HERE

SHIP TO

WEST VIRGINIA STATE POLICE

4124 KANAWHA TURNPIKE
 SOUTH CHARLESTON, WV
 25309 304-746-2141

DATE PRINTED	TERMS OF SALE	SHIP VIA	F.O.B.	FREIGHT TERMS
08/10/2011				

BID OPENING DATE: 09/13/2011 BID OPENING TIME 01:30PM

LINE	QUANTITY	UOP	CAT. NO.	ITEM NUMBER	UNIT PRICE	AMOUNT
				Fax: 304-727-5580		
CONTACT PERSON (PLEASE PRINT CLEARLY):						
				Joseph Bird		
***** THIS IS THE END OF RFQ DPS1203 ***** TOTAL:						_____

SEE REVERSE SIDE FOR TERMS AND CONDITIONS

SIGNATURE	TELEPHONE	DATE
TITLE	FEIN	ADDRESS CHANGES TO BE NOTED ABOVE

WHEN RESPONDING TO RFQ, INSERT NAME AND ADDRESS IN SPACE ABOVE LABELED 'VENDOR'



State of West Virginia
 Department of Administration
 Purchasing Division
 2019 Washington Street East
 Post Office Box 50130
 Charleston, WV 25305-0130

Request for Quotation

RFG NUMBER
 DPS1203

PAGE
 1

ADDRESS CORRESPONDENCE TO ATTENTION OF
 TARA LYLE
 304-558-2544

RFQ COPY
 TYPE NAME/ADDRESS HERE

VENDOR

SHIP TO

WEST VIRGINIA STATE POLICE
 4124 KANAWHA TURNPIKE
 SOUTH CHARLESTON, WV
 25309 304-746-2141

DATE PRINTED	TERMS OF SALE	SHIP VIA	FOB	FREIGHT TERMS
08/22/2011				

BID OPENING DATE: 09/13/2011 BID OPENING TIME 01:30PM

LINE	QUANTITY	UOP	CAT. NO.	ITEM NUMBER	UNIT PRICE	AMOUNT
ADDENDUM NO. 1						
1. BLANK ODD NUMBERED PAGES BEGINNING WITH PAGE 5 AND ENDING WITH PAGE 25 WERE INADVERTENTLY ADDED TO THE EOI DOCUMENT. THE EVEN NUMBERED PAGES BEGINNING WITH PAGE 4 THROUGH 24 ARE CORRECT. THE BLANK ODD NUMBERED PAGES SHOULD BE IGNORED. 2. ADDENDUM ACKNOWLEDGEMENT IS ATTACHED. THIS DOCUMENT SHOULD BE SIGNED AND RETURNED WITH YOUR BID. FAILURE TO SIGN AND RETURN MAY RESULT IN DISQUALIFICATION OF YOUR BID.						
END OF ADDENDUM NO. 1						
0001	1	JB		906-00-00-001		
ARCHITECT/ENGINEERING SERVICES, PROFESSIONAL						
***** THIS IS THE END OF RFQ DPS1203 ***** TOTAL:						

SEE REVERSE SIDE FOR TERMS AND CONDITIONS

SIGNATURE	TELEPHONE	DATE
TITLE	FEIN	ADDRESS CHANGES TO BE NOTED ABOVE

WHEN RESPONDING TO RFQ, INSERT NAME AND ADDRESS IN SPACE ABOVE LABELED 'VENDOR'

EXHIBIT 10

REQUISITION NO.: ..DPS1203

ADDENDUM ACKNOWLEDGEMENT

I HEREBY ACKNOWLEDGE RECEIPT OF THE FOLLOWING CHECKED
ADDENDUM(S) AND HAVE MADE THE NECESSARY REVISIONS TO MY
PROPOSAL, PLANS AND/OR SPECIFICATION, ETC.

ADDENDUM NO.'S:

NO. 1X..

NO. 2

NO. 3

NO. 4

NO. 5

I UNDERSTAND THAT FAILURE TO CONFIRM THE RECEIPT OF THE
ADDENDUM(S) MAY BE CAUSE FOR REJECTION OF BIDS. VENDOR
MUST CLEARLY UNDERSTAND THAT ANY VERBAL
REPRESENTATION MADE OR ASSUMED TO BE MADE DURING ANY
ORAL DISCUSSION HELD BETWEEN VENDOR'S REPRESENTATIVES
AND ANY STATE PERSONNEL IS NOT BINDING. ONLY THE
INFORMATION ISSUED IN WRITING AND ADDED TO THE
SPECIFICATIONS BY AN OFFICIAL ADDENDUM IS BINDING.


.....
SIGNATURE

Chapman Technical Group
.....
COMPANY

9/13/2011
.....
DATE

STATE OF WEST VIRGINIA
Purchasing Division

PURCHASING AFFIDAVIT

West Virginia Code §5A-3-10a states: No contract or renewal of any contract may be awarded by the state or any of its political subdivisions to any vendor or prospective vendor when the vendor or prospective vendor or a related party to the vendor or prospective vendor is a debtor and the debt owed is an amount greater than one thousand dollars in the aggregate.

DEFINITIONS:

"Debt" means any assessment, premium, penalty, fine, tax or other amount of money owed to the state or any of its political subdivisions because of a judgment, fine, permit violation, license assessment, defaulted workers' compensation premium, penalty or other assessment presently delinquent or due and required to be paid to the state or any of its political subdivisions, including any interest or additional penalties accrued thereon.

"Debtor" means any individual, corporation, partnership, association, limited liability company or any other form or business association owing a debt to the state or any of its political subdivisions. "Political subdivision" means any county commission; municipality; county board of education; any instrumentality established by a county or municipality; any separate corporation or instrumentality established by one or more counties or municipalities, as permitted by law; or any public body charged by law with the performance of a government function or whose jurisdiction is coextensive with one or more counties or municipalities. "Related party" means a party, whether an individual, corporation, partnership, association, limited liability company or any other form or business association or other entity whatsoever, related to any vendor by blood, marriage, ownership or contract through which the party has a relationship of ownership or other interest with the vendor so that the party will actually or by effect receive or control a portion of the benefit, profit or other consideration from performance of a vendor contract with the party receiving an amount that meets or exceed five percent of the total contract amount.

EXCEPTION: The prohibition of this section does not apply where a vendor has contested any tax administered pursuant to chapter eleven of this code, workers' compensation premium, permit fee or environmental fee or assessment and the matter has not become final or where the vendor has entered into a payment plan or agreement and the vendor is not in default of any of the provisions of such plan or agreement.

Under penalty of law for false swearing (*West Virginia Code §61-5-3*), it is hereby certified that the vendor affirms and acknowledges the information in this affidavit and is in compliance with the requirements as stated.

WITNESS THE FOLLOWING SIGNATURE

Vendor's Name: Chapman Technical Group

Authorized Signature: *[Signature]* Date: 9/13/2011

State of West Virginia

County of Kanawha, to-wit:

Taken, subscribed, and sworn to before me this 13 day of September, 2011.

My Commission expires September 20, 2020

AFFIX SEAL HERE

NOTARY PUBLIC *Jessica D. Gunnoe*

