

June 28, 2012

West Virginia Department of Environmental Protection
Office of Abandoned Mine Lands and Reclamation
c/o State of West Virginia Department of Administration
Purchasing Division
2019 Washington Street, East
PO Box 50130
Charleston, WV 25305-0130

RE: DEP 15901, Mapping and Engineering Design Services, Expression of Interest

Dear AML Chief and Selection Committee:

Thrasher Engineering, Inc. (TEI) is very interested to provide mapping and engineering design services for the aforementioned projects in Barbour, Upshur and Grant Counties, West Virginia. We will provide the highest level of service and technical proficiency, in a cost efficient manner, and meet or beat all deadlines.

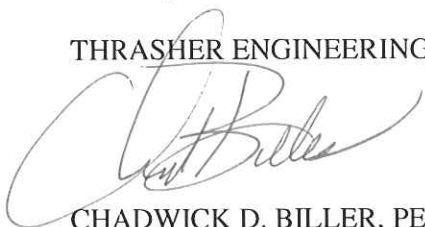
From the information provided in the RFQ we have developed an understanding of the project needs and approach. TEI has completed numerous mapping projects the include land reclamation and other features required by this project.

We have included a summary of our qualifications related to the "Selection Criteria" listed in the RFQ.

We look forward to the opportunity to discuss your needs and how TEI can provide services necessary.

Sincerely,

THRASHER ENGINEERING, INC.



CHADWICK D. BILLER, PE
Partner / Principal-in-Charge

RECEIVED

2012 JUN 28 AM 9:37

WV PURCHASING
DIVISION

in this proposal...

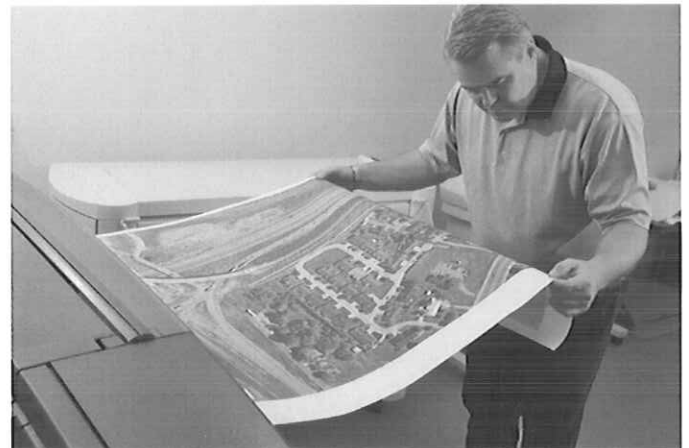
- 1 Executive Summary**
Mission Statement

- 2 Successful Projects**
Related Experience

- 9 Your Project Team**
*The Project Team for the WV DEP
Mapping & Design Services Project*

- 14 Integrated Services**
Let us show you what we can do.

- 19 About Us**
From the beginning..



Visit the "out to bid" section of TEI's website - www.thrashereng.com.

When your project goes to bid, contractors throughout the mid-Atlantic area will be informed. We actively pursue bidders, bringing more competition and a better bidding scenario for you.

executive summary

Thrasher Engineering, Inc. (TEI) is a civil engineering consulting firm, specializing in public works projects. The majority of TEI's work involves publicly funded water treatment and distribution systems, sewage collection and treatment systems, and industrial and business parks. Over \$600 million in water, sewer, site development, survey and construction management projects have been designed and supervised by the firm.

H. Wood Thrasher and Henry A. Thrasher formed the company in 1983 with a commitment to excellence and professionalism in engineering. H. Wood Thrasher, P.E. remains principal of the company; also serving as principal is Kenneth P. Moran, P.E. Providing a full range of professional engineering services, TEI currently maintains a staff of

200+ full-time employees. Our staff includes registered professional engineers, graduate engineers, registered professional surveyors, and support staffing of surveyors, design technicians, CADD technicians, construction managers, and secretarial / clerical personnel. This professional staff has a wealth of experience and is our greatest asset. This includes not only the principals but also the technicians, surveyors, construction managers, and office support staff. Combining education with experience, the qualified staff of TEI strives to provide service that is second to none and is committed to maintaining a strong reputation for quality work. The company's full and diverse staff has the resources to handle many projects, both large and small, simultaneously.

We're There When You Need Us

Performing on-time and on-budget is essential to client satisfaction; our team knows this and performs to meet the client's schedule. The majority of our current AML projects are nearing completion,

meaning we are able to start your planning immediately.

Single Source Management

TEI will bring the best quality work to the DEP's project and you can be assured that all services will be managed by your TEI personnel, under our "single source" approach. This approach allows our clients to know that their interests are always under the watchful eye of the TEI Project Manager and Principal-in-Charge.

Equipment and Software

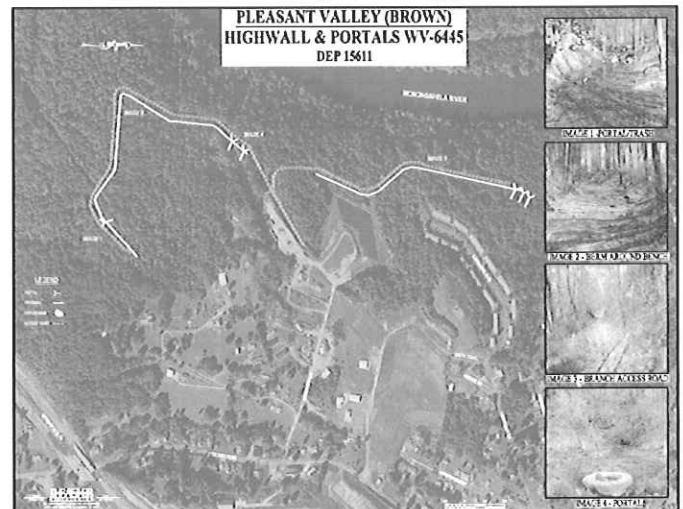
TEI provides one of the largest networks of computer aided design (CAD) equipment, software and trained personnel in the State of West Virginia.

Civil 3D, Carlson and Microstation V8 software is utilized at 70 CAD stations within the Group. Additionally, equipment includes 10 large format (size E) plotters and 5 large format plotter / scanners. Two digital 3D Soft Copy Mapping Stations, 1 Zeiss Analytical Stereo Data Collector and 1 VX Digital Negative Scanner.

CAD plans are prepared by both dedicated CAD employees and by staff engineers and engineering technicians in each of the firm's offices. This equipment allows our design department to perform accurate work quickly and efficiently. All departments have the capability to electronically transmit data to clients requesting this service. This blend of experienced personnel utilizing modern equipment results in successful projects and satisfied clients.

MISSION STATEMENT:

The mission of Thrasher Engineering, Inc. is to uphold the highest standards of technical expertise and client service while providing innovative solutions to our clients' challenges; through doing so, we are able to preserve our philosophy of "Successful Projects... Repeat Clientele".





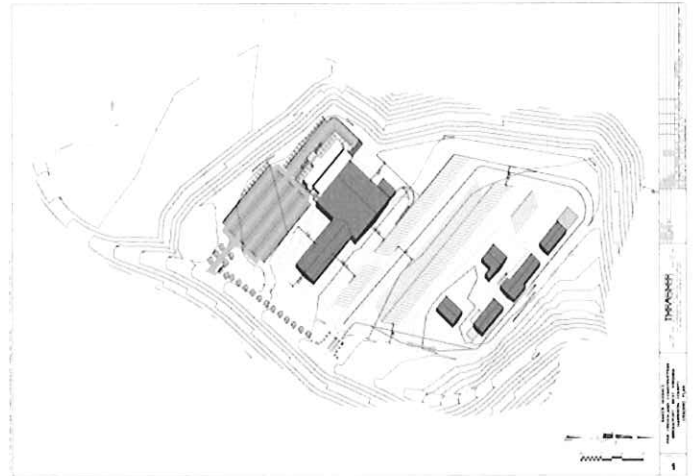
successful projects

Current Projects

Below is the list of projects that TEI is currently working on that are similar in scope to the Department of Environmental Protection's Mapping and Design Services project.

Baker Hughes Site Development

This project is a 760 acre site project that required aerial mapping to generate contours representing the existing surface at a 2 foot interval. Aerial targets were surveyed and set to establish the control necessary to meet this mapping standard which was used for site design and development.



Baker Hughes Project

Tygart Valley Pipeline

This project is a 33 mile long linear project that required aerial mapping of a 2000 foot wide corridor along its entire length. The mapping is based off of aerial survey targets set at specified locations and surveyed to the required accuracy to meet the desired mapping standard. This mapping was used to generate 3D models for engineering design.

Dominion Lewis Site, Compressor Station

This project consists of a 130 acre site in Harrison County, Ohio to generate contours to represent existing surface at 2-foot intervals.



successful projects

WV DEP ABANDONED MINE LANDS

Anglin's Run #1 and Roaring Creek Stream Restoration Projects

Anglin's Run #1 Barbour County

This area includes a total of eight (8) collapsed mine portals with at least 5 of them having discharges ranging from 1 to 10 gpm. Total flows were estimated to be between 25 and 30 gpm. Thrasher Engineering's preferred scope and preliminary plans for this project include construction of an access road into the site, excavation and wet seal of at least eight (8) deep mine portals and the re-grade and fill of subsidence sinkholes. To carry water safely off site, drainage control channels, conveyance pipe and under drain will be constructed. All areas disturbed by construction will be soil covered, conditioned and re-vegetated.

Roaring Creek Stream Randolph County

This project involves the elimination of subsidence depressions, the closure of open portals and the treatment of AMD. The Roaring Creek Watershed was heavily deep mined and surfaced mined prior to 1977. The project area consists of 3 open and 3 closed portals discharging AMD, AMD seeps along the unnamed tributary and an area of subsidence, which drains surface water into the mine workings. AMD flow from the deep mine portals ranges from 10 gpm to 100 gpm with PH ranging from 3.1 to 5.0. The seeps along the UNT showed an average PH of 3.3. Construct and rehabilitate access roads to the sites. Install wet seals at the portal locations (4 Portals total). Thrasher Engineering's preliminary plans include re-grading the subsidence area to prevent surface water from entering the mine workings, and installing an emergency spillway on the existing pond which will be designed to handle the additional flow.

CLIENT: WV DEP
Office of Abandoned Mine Lands and Reclamation
304-296-0485





successful projects

WV DEP ABANDONED MINE LANDS

Amherstdale (Logan County) Pre-settling Basin and Pre-Treatment facility project

Project Description: The AML affected area is located in Logan County on CR 16, west of the city limits of Man, a distance of approximately 12.6 Miles.

The scope of the project is the design and construction of a pre-settling basin and pre-treatment system to remove metals and turbidity from the existing water sources, allowing the water existing treatment facility to utilize the surface and groundwater.

The scope of services TEI provided for this project included:

Survey, supervision of subsurface investigation, environmental review, preparation of design, drawings, development of construction documents.

Ragland (Mingo County) Waterline Extension Project

Project Description: The AML affected area is located in the Midwestern portion of Mingo County. The area is approximately 2.6 square miles. The scope of services TEI provided for this project included: survey, supervision of subsurface investigation, environmental review, design, development of construction documents. Upon construction, TEI will provide construction management services.

**CLIENT: WV DEP
Office of Abandoned Mine Lands and
Reclamation
304-926-0485**

successful projects

ACID MINE DRAINAGE / COAL COMPANY EXPERIENCE

Martinka Water Treatment Plant

This project consisted of the design of a 17.3 MGD Water Treatment Plan to blend mine borehole water with acid mine drainage; the plan removes iron (1000 mg/l (ferric hydroxide) to less than 1 mg/l.

The plant design included:

- Aeration - Blending and Stripping Carbon Dioxide
- Feed Hydrogen Peroxide - Shifts chemical equilibrium for utilization of naturally calcium carbonate for neutralization
- Coagulation/Flocculation - Three (3) stage tapered flocculation with axial flow propeller mixers and variable frequency drives
- Sedimentation - Six (6) settling ponds with **ferric hydroxide** sludge removal and underground injection wells
- Polishing Pond - Sodium hexamataphosphate for calcium stabilization.

Dayton Carpenter, P.E., DEE, Project Engineer was rewarded the following for the project:

- 2002 WV ACEC Gold Award - Engineering Excellence*
- 2002 WV Manufacturer's Association Environmental Leadership Award for Innovative Technology*

CLIENT: Martinka Water Treatment Plant

CONTACT: Mr. Gary Timms, Water Treatment Plant Supervisor

PHONE: (304) 366-5516

PROJECT LOCATION: FAIRMONT, WV

PROJECT COST: \$6,500,000.00



■ ■ ■ ■

○ *successful projects*

Site Development Projects—Sediment and Erosion Measures

Harrison County Business and Technology Park

Robert C. Byrd Industrial Park—Hardy County

White Oaks Business Park—Harrison County

TEI provided survey, site planning, and engineering design services for each of these business / industrial parks which were developed on abandoned mine lands. The design of each project included plans for landslide / erosion and sediment control within grading plans.



Harrison County Business and Technology Park

CLIENT: White Oaks Business Park
Jack Keeley—304-622-2400

CLIENT: Harrison County Development Authority
304-326-0213

CLIENT: Hardy County Rural Development Authority
Connie Sherman—304-530-6287



Robert C. Byrd Hardy County Industrial Park



White Oaks Business Park—Bridgeport, WV



successful projects

Site Development Projects—Sediment and Erosion Measures

CLIENT: Mingo County Redevelopment Authority
Mike Whitt, Executive Director
304-235-0042

Mingo County Wood Products Industrial Park, Mingo County, West Virginia

Project Description: This project consisted of the development of conceptual layout and final design drawings for the park. The work consisted of drainage, sediment, erosion measures, and on-site utilities including water and sanitary sewer, along with the design and permitting of a 12,000 gpd wastewater treatment plant. Also included in this project was a roadway design conforming to WV Department of Highways specifications and criteria. Construction management services were also provided.



Mingo County Industrial Park—Mingo County, WV

CLIENT: Federal Bureau of Prisons
202-514-6461
McDowell County Commission
304-436-8548

Indian Ridge Industrial Park / McDowell County Prison

Project Description: The objective of this project was to push back an existing highwall and enlarge the flat area on the McDowell County's Indian Ridge Industrial Park, a portion of which is being used to accommodate a Federal Prison. Thrasher Engineering is now providing the site development engineering services for that facility. This project consisted of the design, bidding, and construction management for the preparation of an industrial park/federal prison site. **The construction involved moving 20,000,000 CY of earth to create approximately 250 relatively flat acres for development. Inclusive in our scope of work was site grading, sediment and erosion control, stream relocations, and wetland mitigation.** This work involved laying back an existing highwall and placing the excavated material into a nearby valley to increase the developable acreage of the site. The valley fill serves as a buffer and will be used for non-structural uses.



McDowell County Prison





successful projects

Site Development Projects—Sediment and Erosion Measures

**CLIENT: Barbour County Office for Economic Development
304-456-1225**

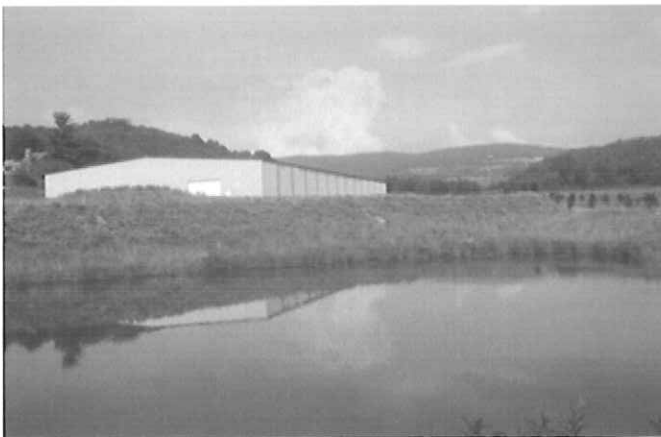
Belington Industrial Park

This project consisted of the development and conceptual layout and final design drawings for the park. The work consisted of on-site utilities including water and sanitary sewer.

Specifically, this project included:

- 8,000 LF of water line,
- 2,700 LF of gravity sewer line,
- Manholes and Fire hydrants.

Additionally, this project included an access road conforming to WV DOT/Department of Highways specifications and criteria, earthwork for building site preparation and storm water detention. Construction management services were also provided.



Belington Industrial Park—Barbour County, WV

**CLIENT: U.S. Department of Veterans Affairs
Peter Fernandez, National Cemetery
Administration
Carter VanDyke Associates
215-345-5053**

West Virginia National Cemetery

Project Description: The project consisted of the planning, design and bidding for the expansion of the WV National Cemetery. The scope of the work included site utilities, storm sewers, roads, sidewalks, retaining walls, pre-cast concrete crypt burial areas, site grading and sediment and erosion control. Construction management and survey services were also provided.



West Virginia National Cemetery

**CLIENT: West Virginia Division of Highways
304-558-2830**

WV DOH, Harrison County, West Virginia

Project Description: This project consisted of developing construction drawings and right-of-way documents for a new storm drain system along Old Bridgeport Hill. The existing storm drain system was 25 to 30 feet deep and was collapsing in several areas; therefore, a new system of inlets and pipes were designed to collect surface water.





successful projects

Site Development Projects—Sediment and Erosion Measures

**CLIENT: Fairmont State University
Dr. Dan Bradley, P.E., President
304-367-4000**

Fairmont State University

TEI is providing civil engineering services throughout the Fairmont State University campus within the scope of FSU's 10-year \$10 million master plan for infrastructure improvements. This portion of the project included storm water management during and after construction. During the construction phase erosion and sediment control was contained by installing silt fence, water barriers, temporary sediment traps, inlet protection, diversion ditches and utility matting. The final site improvements contain swales, ditches, vegetation, landscaping and culverts to control the storm water and limit the pollution from the site. Ditches are protected from erosion and all unpaved areas are stabilized with vegetation.

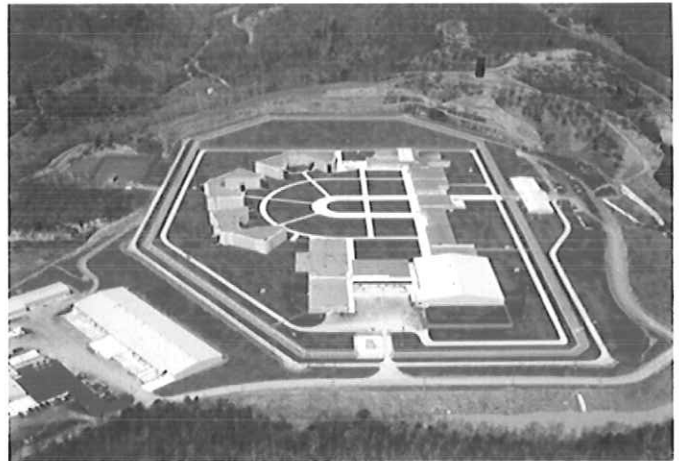


Fairmont State University Storm Water project

**CLIENT: Federal Bureau of Prisons
202-514-6461**

Glennville Correctional Institution, Gilmer County, West Virginia

Project Description: This project consisted of the design/build of a U.S. Correctional Facility. Inclusive in our scope of work were the site utilities (sewer, water, storm water management gas) site grading, sediment & erosion control, layout of facilities, on site roads and parking, various site elements and oversight during the construction phase.



Glennville Correctional Institution

Canaan Federal Prison, Scranton, PA

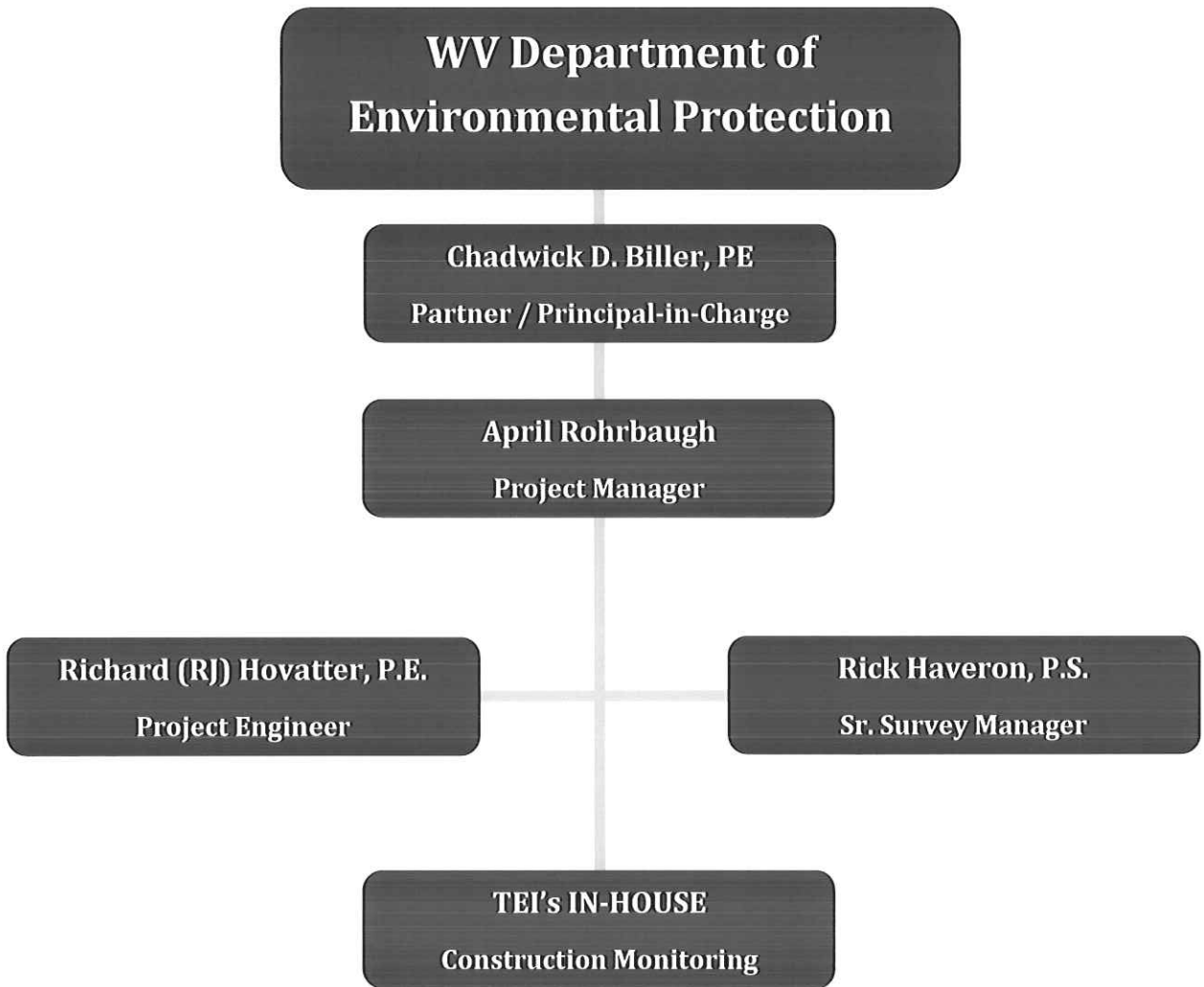
Project Description: TEI served as a Team Member on this design-build project of US Penitentiary and Federal Prison Camp. The scope of services included sewer, water, storm water management and gas utilities, site grading, sediment and erosion control, relocation of a township road, layout of the facility and oversight during construction. The drainage of this project required the design of a storm water detention pond.





your project team

The team of professionals TEI has assembled to bring the WV DEP's project to fruition is unrivaled by other firms when combining knowledge of the project specifics, expertise and experience. Each member of this team brings a specific area of proficiency that is essential for a successful project.



Chadwick D. Biller, P.E.

Principal / Principal-in-Charge

Chadwick D. Biller, P.E. has experience in all aspects of engineering. His primary emphasis has been on highways, roads, bridges and airports. Mr. Biller joined Thrasher Engineering, Inc. in 1999 and is a partner of Thrasher Engineering.

Mr. Biller is responsible for WV DEP AML project and public and private site development projects, specializing in airports, highways, roads and bridges. As Project Manager for all of the firm's WVDOT/DOH projects, he has extensive knowledge of state and federal building standards.

Mr. Biller has completed numerous site development projects for private and public clients. These projects include mass grading, roads, drainage, storm water management, erosion and sediment control and numerous regulatory permitting activities. He is the Airport Engineer for North Central West Virginia Airport. He is involved in the day-to-day and long-term upgrades for the airport to promote safety and develop airport properties.

Highlighted Experience—Project Manager

Site Development Projects:

- WV DEP Pleasant Valley Highwall
- WV DEP Roger Camp Hill
- WV DEP Anglin's Run and Roaring Creek Projects
- WV DEP Overfield CS&P and Squires Creek
- WV DEP Lyons Landslide and Laurel Run #1
- Taylor County Commission, Re-roofing of Courthouse and Jail
- Fairmont State University Aerospace Center
- Raleigh County Memorial Airport Industrial Park
- Putnam Business Park
- Wood Products Business Park
- Aurora Flight Sciences
- Various Subdivision in Berkeley County Ranging From 12 to 420 Lots
- Site Plan for Hi-Tech Consortium Expansion, Fairmont, WV
- Site Plans for Nippon Thermostat, Green Metals and Schwans, Putnam County
- Pendleton County Courthouse Annex
- Wingate Hotel, Charles Pointe, Bridgeport, WV
- Daycare Center and USDA Parking Lot, Hardy County



Education

B.S., Civil Engineering, 1992—West Virginia University

Certifications

Registered Professional Engineer (PE), State of West Virginia #13620
Registered Professional Engineer (PE), State of Pennsylvania #PE056012E
Registered Professional Engineer (PE), State of Ohio #64594

- City of Pleasant Valley, Sidewalks
- Snowshoe Mountain Resort / Intrawest - The Seneca
- Wetland Replacement Project, Putnam County
- Hurricane Business Park
- Shinnston City Park, Including Pool and Bathhouse
- City of Bridgeport, Walking Trail and Bridge
- Highway/Road/Bridge Projects:
 - Old Bridgeport Hill New Storm Drainage System
 - Snowshoe Drive Upgrade
 - King Coal Highway
 - Terra Alta Curve
 - Lodgeville Road
 - North Bridgeport Bypass
 - Corridor H
 - Upgrade of US Route 19
 - East Street and US Route 50, Parkersburg
 - Merrick Creek Connector
 - City of Bridgeport, Valley Drive, Chenoweth Drive, Village Drive and Meadowbrook Mall Road
 - Lodgeville Bridge
 - Indian Fork Bridge

April Rohrbaugh

Project Manager

April Rohrbaugh joined Thrasher Engineering in January of 2006 and serves as Project Manager / Staff Engineer in the site department at the Oakland, Maryland branch. Mrs. Rohrbaugh has experience in all aspects of site engineering, taking projects from survey to concept to construction. Her specialties include: design surveying consisting of both field traversing and survey locations and aerial mapping. Conceptual Planning: planning for residential, commercial, and recreational developments. Site / Land Development Engineering: geometric layout of sites, subdivisions, and roads, grading, drainage, storm water management, erosion and sediment control, and various regulatory permitting requirements.

Highlighted Experience - Project Manager / Staff Engineer

- WV DEP Pleasant Valley Highwall
- WV DEP Roger Camp Hill
- WV DEP Anglin's Run and Roaring Creek Projects
- WV DEP Overfield CS&P and Squires Creek
- WV DEP Lyons Landslide and Laurel Run #1
- ASHBY CREST ESTATES (Ashby, WV)- Responsible for design survey and topographic mapping and road design. Completed plat work for Mineral County Planning and Land Development approval. 54 Lot Subdivision
- ASPEN WOODS WEST (Garrett County, WV) - Re-designed lot layout to incorporate more common area to accommodate equestrian use. Complete plat work for the Garrett County Planning & Land Development. 28 Lot Subdivision
- CRYSTAL SPRINGS WALKING TRAIL - Completed a concept and design, as well as, overcame difficult site constraints which included wetlands, a stream crossing and slope compliance to meet ADA Standards.
- G&W LUMBER - The existing lumber yard was extended to add approximately 1 acre of storage area. The site was graded to removing an excess of



Education:

B.S. Civil Engineering Technology—Fairmont State University, 2003

17,000 CY of soil from the property. Also, an underground storm water detention system was designed to maximize the storage area.

- GINSENG HILL - On this design grass lined swales and storm water structures were used to treat run-off. To drastically reduce the volume requirements of the storm water structures, a clear water diversion swale along with a storm sewer system that carried the "clean water" to an existing outlet was utilized.
- HOWARD DON - Single residential property which is located within the 100 year flood plan. Federal Emergency Management Agency (FEMA) required the submission of a conditional letter of map revision for fill (CLOMR-F) to approve the plans for removing a portion of the property out of the flood plain by placing fill. This project also required a permit from the Maryland Department of the Environment (MDE) for construction in an existing flood plain as well as a sand mound design approval from the Garrett County Health Department.
- JOHN FRAM (Garrett County, MD) - Completed a sand mound design which was approved by the Garrett County Health Department.
- MAXING STEYER - Completed the application to FEMA and plat of survey for a letter of map amendment (LOMA) proving that the existing Federal Insurance Rate Map (FIRM) included a portion of the property that was not within the 100 year flood plane, resulting in the removal of the property from the flood plane.

■ ■ ■ ■

Richard (RJ) Hovatter, P.E. Project Engineer

Richard Hovatter Jr. joined the Thrasher Engineering team in 2011 and serves as project manager / engineer from the Clarksburg office. He brings extensive knowledge and experience in abandoned mine land and emergency situations such as landslides and mine subsidence. He has over thirteen years of AutoCAD and site development software experience to go along with his training. Mr. Hovatter is responsible for the designs, scheduling, collection and reporting of mine surface, sediment erosion control plans and waterline feasibility studies.

Highlighted Experience - Project Engineer

CNX Gas, Norman Access Road— As project manager, conducted flood plain analysis, site development, temporary bridge construction and construction documents for this project.

J.K Alfred Storm Water—As project manager conducted erosion and sediment analysis and storm water management plans for this project.

CAN Gas, Oxford Pipeline— As project manager development pipeline layout, conducted erosion and sediment analysis and

Alderson Broaddus College, Athletic Field—As project engineer oversaw site design, grading and storm water management for the construction of the new athletic field.

Hilcop America, Utica 1—As project engineer performed erosion and sediment analysis, storm water management, site design and grading.



Education:

**Fairmont State University, Bachelor of Science—
Civil Engineering Technology**

Registrations:

West Virginia Professional Engineer

Pennsylvania Professional Engineer

State of Maryland Erosion and Sediment Control

Level I Rosgen Natural Stream Construction

Level II Rosgen Natural Stream Construction

HEC-RAS Operator Training Short Course

**Annual Oil and Gas Training, Pennsylvania—
Certified for expedited review of ESCGP-1**

Annual MSHA Training

Alderson Broaddus College, Residential Housing—
As project manager for the housing project oversaw site development and design, storm water management, site grading and created construction documentation.

■ ■ ■ ■

Richard L. Haveron, P.S.

Senior Survey Manager

Richard L. Haveron, P.S. joined the Thrasher Engineering team in 2011. He has been a registered professional surveyor since 1988 in West Virginia and 1990 in Virginia. Mr. Haveron brings many years of experience with him in the construction industry involving project supervision estimation and quantity take-off from various types of construction plans, and has prepared environmental permits of different types of operations from quarry permits to high voltage transmission lines. He has vast experience with Global Positioning Systems (GPS) and survey grad mapping systems. Mr. Haveron also has extensive experience with survey and engineering software and GIS mapping.

Highlighted Experience—Senior Survey Manager

- ❑ Project Manager and Survey Manager for two gas pipeline projects. One in the northern panhandle and one in North Central West Virginia, totaling nearly 90 miles of pipe.
- ❑ Senior Survey Manager for gas well permits and pad design in Western Ohio and Southwest Pennsylvania.
- ❑ Project Engineer and Project Manager for 2 heavy highway contractors in the eastern panhandle and the northern part of West Virginia totaling approximately 20 miles of new 4-lane highway.
- ❑ Project Manager for the I-81 4-lane rehabilitation in southern Virginia.
- ❑ Site Superintendent for landfill cell construction in Virginia and West Virginia.
- ❑ Project Manager on the Weyerhaeuser OSB plant in Heaters, West Virginia.
- ❑ Supervised survey crews for West Virginia's Corridor H, Route 33 and Corridor L, Route 19.



Education

- A.S. in Forestry from Glenville State College
- A.S. in Surveying from Glenville State College

Affiliations / Awards

- Registered Professional Surveyor in West Virginia and Virginia
- American Congress on Surveying and Mapping
- West Virginia Society of Professional Surveyors

■ ■ ■ ■

integrated services

Survey Services

In addition to a full service professional engineering staff, TEI maintains a complete surveying department which includes 10 licensed professional land surveyors, twenty full-time survey crews, CADD technicians, and office support staff.

We perform our work utilizing the most current methods and equipment available. Our survey work is accomplished using global positioning systems (GPS) and electronic distance measuring (EDM) survey stations with data gathering capabilities.

The type of surveys provided by TEI varies greatly as well and covers virtually all aspects of land surveying, such as:

Pre- and Post-Mining Surveys - vertical and horizontal control, inspector's report of protected structures, interior and exterior photographs, and videos. TEI provides these survey services for numerous coal companies, including Eastern and Martinka. Additional services performed for Eastern includes construction layout for impoundments, shaft site boundary and topographic surveys, map editing, and collection of well inventory data.



Boundary Surveys - verification of land owners, traverse and location of existing monuments, computations of closure, establishment of property corners, actual field stakeout, and preparation of



plats and legal descriptions for property owners.

Topographic Surveys - location of existing features and determination of contours used in engineering layout of water distribution systems, sewer collection systems, industrial park layouts, etc.

Construction Layout - providing horizontal and vertical control for contractor's use and using this information to establish construction controls.

GPS Surveys - horizontal and vertical control networks.

■ ■ ■ ■

integrated services

Storm Water Drainage / Sediment and Erosion Control

Our experience includes development of Sediment and Erosion Control measures on all types of construction sites as required by the WV Division of Environmental Protection, design of drainage facilities including piping, intake structures, etc., for site stabilization and flood control.

Our staff members have considerable hydrologic and hydraulic design experience and have successfully obtained local, state, and federal erosion and sediment control permits and National Pollutant Discharge Elimination System (NPDES) permits for point source and storm water discharges.



Capabilities in the evaluation and design storm water drainage include:

- Hydrology Studies / Hydrographic Mapping
- Storm Water Collection Systems
- Detention Ponds
- Injection Wells
- Underground Storage
- Combined Sewer Overload (CSO) separation

■ ■ ■ ■

integrated services

Environmental Reporting Services

Thrasher Engineering, Inc. provides full environmental assessment and clearance services. We have more than 19 years of experience conducting environmental/natural resource compliance consultation with West Virginia Division of Environmental Protection, (WVDEP), Federal Aviation Administration and Federal Highways Administration, US Department of Agriculture-Rural Development Utility Program, and US Environmental Protection Agency (EPA).

Experience includes:

- Permitting Related Activities (401 and 404)
- NEPA Environmental Document Preparation
- Wetland Delineation and Mitigation
- Rare, Threatened and Endangered Species Section 7 Informal Consultation
- Rare, Threatened and Endangered Species Section 10 Habitat Conservation Plans
- Water Use and Water Quality
- Air and Noise Impacts, Assessments, and Controls
- Soils and Geological Resources
- Cultural Resources -(Sub contracted to a reputable and approved Cultural Resource Consultant)
- Hazardous Materials
- Sediment and Erosion Control
- Consent Orders
- Compliance Schedules
- Site investigations
- SPCC Plans, Contingency Plans, Ground Water Protection Plans and Storm Water Pollution Prevention Plans
- Waste Treatment and Site Remediation
- Waste Disposal
- Channel Restoration
- Stream Bank Stabilization
- Enforcement Actions





integrated services

Construction Management & Inspection

Thrasher Engineering, Inc. knows how projects should be built. We can provide the knowledgeable and experienced personnel necessary to manage the construction phase of your project. Our project managers and inspectors are experienced in all types of construction activities. From utilities, site development and storm water management to roads, bridges and airports, we apply our construction management and inspection expertise to ensure successful projects. Our construction managers and our inspectors have years of experience; many of our inspectors are certified by the West Virginia Department of Transportation / Division of Highways for roadwork and materials testing.



■ ■ ■ ■

integrated services

Materials Testing

Thrasher Engineering, Inc.'s Materials Testing Department is capable of performing a wide range of field and laboratory tests. Our laboratory at our Clarksburg, WV office is one of only three nationally certified facilities in the State of West Virginia. Additionally, our engineers and technicians who perform tests both in the field and in the lab are also certified by the State.

Services Include:

- Concrete Testing and Inspection
- Soil Testing and Inspection
- Aggregate Testing and Inspection
- Mortar and Grout
- Asphalt
- Paint Coatings
- Sprayed-on Fireproofing
- Subsidence Inspecting
- Caisson and Piling Inspection





about us

Formed in 1983, Henry A. Thrasher and H. Wood Thrasher created Thrasher Engineering, Inc. with a commitment to excellence and professionalism in Engineering. As the leading Consulting Engineering firm in the state of West Virginia, Thrasher Engineering specializes in all facets of engineering from site development efforts to public works projects.

In 2005, the firm added an Architectural Department to provide current, as well as new clients with the added architectural services. Along with that came the Planning and Landscape Architecture division.

Simply stated, Thrasher Engineering, Inc. offers a higher level of expertise, experience and documented history of client satisfaction for architecture projects than other firms. We can bring you the complete range of services under single corporate management with a solid team committed to success.



Locations

CLARKSBURG, WEST VIRGINIA

CHARLESTON, WEST VIRGINIA

BECKLEY, WEST VIRGINIA

PRINCETON, WV

OAKLAND, MARYLAND

CANTON, OHIO



State of West Virginia
 Department of Administration
 Purchasing Division
 2019 Washington Street East
 Post Office Box 50130
 Charleston, WV 25305-0130

Request for Quotation

RFQ NUMBER
 DEP15901

PAGE
 1

ADDRESS CORRESPONDENCE TO ATTENTION OF:
 GUY NISBET
 304-558-8802

RFQ COPY
 TYPE NAME/ADDRESS HERE
Thrasher Engineering
 PO Box 1532
 30 Columbia Boulevard
 Clarksburg, WV 26302

ENVIRONMENTAL PROTECTION
 DEPT. OF
 OFFICE OF SPECIAL RECLAMATION
 105 S. RAILROAD STREET
 PHILIPPI, WV
 26416-9998 304-457-3219

DATE PRINTED	TERMS OF SALE	SHIP VIA	F.O.B.	FREIGHT TERMS
05/23/2012				

BID OPENING DATE: 06/28/2012 BID OPENING TIME 01:30PM

LINE	QUANTITY	UOP	CAT. NO.	ITEM NUMBER	UNIT PRICE	AMOUNT
0001	1	JB		906-29		
<p>MULTIPLE PERMITS DESIGN</p> <p>EXPRESSION OF INTEREST</p> <p>THE WEST VIRGINIA PURCHASING DIVISION, FOR THE AGENCY, THE WEST VIRGINIA DEPARTMENT OF ENVIRONMENTAL PROTECTION, IS SOLICITING EXPRESSIONS OF INTEREST FOR PROFESSIONAL MAPPING AND DESIGN SERVICES AT THE BOND FORFEITED PERMITS OF ENERGY MARKETING U-24-84; ROBLEE COAL CO. D-49-82 IN BARBOUR COUNTY, WEST VIRGINIA, ROBLEE COAL COMPANY O-1009-93 AND U-1001-91 IN UPSHUR COUNTY, WEST VIRGINIA; AND BUFFALO COAL CO. S-52-80 IN GRANT COUNTY, WEST VIRGINIA PER THE FOLLOWING BID REQUIREMENTS AND ATTACHED SPECIFICATIONS.</p> <p>BANKRUPTCY: IN THE EVENT THE VENDOR/CONTRACTOR FILES FOR BANKRUPTCY PROTECTION, THE STATE MAY DEEM THIS CONTRACT NULL AND VOID, AND TERMINATE SUCH CONTRACT WITHOUT FURTHER ORDER.</p> <p>ANY INDIVIDUAL SIGNING THIS BID IS CERTIFYING THAT: (1) HE OR SHE IS AUTHORIZED BY THE BIDDER TO EXECUTE THE BID OR ANY DOCUMENTS RELATED THERETO ON BEHALF OF THE BIDDER, (2) THAT HE OR SHE IS AUTHORIZED TO BIND THE BIDDER IN A CONTRACTUAL RELATIONSHIP, AND (3) THAT THE BIDDER HAS PROPERLY REGISTERED WITH ANY STATE AGENCIES THAT MAY REQUIRE REGISTRATION.</p>						

SEE REVERSE SIDE FOR TERMS AND CONDITIONS

SIGNATURE TELEPHONE 304-624-4108 DATE June 28, 2012

TITLE Partner/Principal-in-Charge FEIN 55-0633596-6 ADDRESS CHANGES TO BE NOTED ABOVE

WHEN RESPONDING TO RFQ. INSERT NAME AND ADDRESS IN SPACE ABOVE LABELED 'VENDOR'



State of West Virginia
 Department of Administration
 Purchasing Division
 2019 Washington Street East
 Post Office Box 50130
 Charleston, WV 25305-0130

Request for Quotation

RFQ NUMBER
DEP15901

PAGE
2

ADDRESS CORRESPONDENCE TO ATTENTION OF:
GUY NISBET 304-558-8802

VENDOR

RFQ COPY
 TYPE NAME/ADDRESS HERE
 Thrasher Engineering
 PO Box 1532
 30 Columbia Boulevard
 Clarksburg, WV 26302

SHIP TO

ENVIRONMENTAL PROTECTION
 DEPT. OF
 OFFICE OF SPECIAL RECLAMATION
 105 S. RAILROAD STREET
 PHILIPPI, WV
 26416-9998 304-457-3219

DATE PRINTED	TERMS OF SALE	SHIP VIA	F.O.B.	FREIGHT TERMS
05/23/2012				

BID OPENING DATE: 06/28/2012 BID OPENING TIME 01:30PM

LINE	QUANTITY	UOP	CAT. NO.	ITEM NUMBER	UNIT PRICE	AMOUNT
***** THIS IS THE END OF RFQ DEP15901 ***** TOTAL: _____						

SEE REVERSE SIDE FOR TERMS AND CONDITIONS		
SIGNATURE 	TELEPHONE 304-624-4108	DATE June 28, 2012
TITLE Partner/Principal-in-Charge	FEIN 55-0633596-6	ADDRESS CHANGES TO BE NOTED ABOVE

WHEN RESPONDING TO RFQ, INSERT NAME AND ADDRESS IN SPACE ABOVE LABELED 'VENDOR'

STATE OF WEST VIRGINIA
Purchasing Division

PURCHASING AFFIDAVIT

West Virginia Code §5A-3-10a states: No contract or renewal of any contract may be awarded by the state or any of its political subdivisions to any vendor or prospective vendor when the vendor or prospective vendor or a related party to the vendor or prospective vendor is a debtor and the debt owed is an amount greater than one thousand dollars in the aggregate.

DEFINITIONS:

"Debt" means any assessment, premium, penalty, fine, tax or other amount of money owed to the state or any of its political subdivisions because of a judgment, fine, permit violation, license assessment, defaulted workers' compensation premium, penalty or other assessment presently delinquent or due and required to be paid to the state or any of its political subdivisions, including any interest or additional penalties accrued thereon.

"Debtor" means any individual, corporation, partnership, association, limited liability company or any other form or business association owing a debt to the state or any of its political subdivisions. "Political subdivision" means any county commission; municipality; county board of education; any instrumentality established by a county or municipality; any separate corporation or instrumentality established by one or more counties or municipalities, as permitted by law; or any public body charged by law with the performance of a government function or whose jurisdiction is coextensive with one or more counties or municipalities. "Related party" means a party, whether an individual, corporation, partnership, association, limited liability company or any other form or business association or other entity whatsoever, related to any vendor by blood, marriage, ownership or contract through which the party has a relationship of ownership or other interest with the vendor so that the party will actually or by effect receive or control a portion of the benefit, profit or other consideration from performance of a vendor contract with the party receiving an amount that meets or exceed five percent of the total contract amount.

EXCEPTION: The prohibition of this section does not apply where a vendor has contested any tax administered pursuant to chapter eleven of this code, workers' compensation premium, permit fee or environmental fee or assessment and the matter has not become final or where the vendor has entered into a payment plan or agreement and the vendor is not in default of any of the provisions of such plan or agreement.

Under penalty of law for false swearing (*West Virginia Code §61-5-3*), it is hereby certified that the vendor affirms and acknowledges the information in this affidavit and is in compliance with the requirements as stated.

WITNESS THE FOLLOWING SIGNATURE

Vendor's Name: Thrasher Engineering

Authorized Signature: *Chris Irvine* Date: June 28, 2012

State of West Virginia

County of Harrison, to-wit:

Taken, subscribed, and sworn to before me this 27 day of JUNE, 2012.

My Commission expires 3/16/2014, 20 .

AFFIX SEAL HERE

NOTARY PUBLIC *Chris Irvine*



**WEST VIRGINIA DEPARTMENT OF ENVIRONMENTAL PROTECTION
OSR CONSULTANT QUALIFICATION QUESTIONNAIRE**

Attachment "B"

PROJECT NAME DEP 15901	DATE (DAY, MONTH, YER) 28, June, 2012	FEIN NUMBER 55-0633596-6
1.FIRM NAME Thrasher Engineering, Inc.	2.HOME OFFICE BUSINESS ADDRESS 30 Columbia Boulevard (PO Box 1532) Clarksburg, WV 26301	3.FORMER FIRM NAME Not Applicable
4.HOME OFFICE TELEPHONE 304-624-4108	5.ESTABLISHED (YEAR) 1983	6A.WV REGISTERED DBE (Disadvantaged Business Enterprise) YES X NO
6.TYPE OWNERSHIP INDIVIDUAL X CORPORATION PARTNERSHIP JOINT-VENTURE		
7. PRIMARY OSR DESIGN OFFICE: ADDRESS/TELEPHONE/PERSON IN CHARGE/ NO. OSR DESIGN PERSONNEL EACH OFFICE 30 Columbia Blvd, Clarksburg, WV / 304-624-4108 / Kenneth P. Moran, P.E., Vice-President / 12 300 Association Drive, Charleston, WV / 304-343-7601 / Jonathan Carpenter, P.E., Managing Partner / 2		
8. PRINCIPAL OFFICERS OR MEMBER OF FIRM H. Wood Thrasher, PE – President Kenneth P. Moran, PE – Vice-President		8A. NAME, TITLE, & TELEPHONE – OTHER PRINCIPALS <small>WM. RANDY WATSON-PARTNER (304) 624-4108 CHAD M. RILEY, P.E.- PARTNER (304) 624-4108 CHADWICK BILLY, P.E.- PARTNER (304) 624-4108 CLAY P. RILEY, P.E. - PARTNER (304) 624-4108 DAN FERRELL, P.E.- PARTNER(304) 624-4108 AARON DENHAM - PARTNER (304) 624-4108 RON STANLEY, CPA - PARTNER (304) 624-4108 CRAIG BAKER, ASSOCIATE AIA - PARTNER (304) 624-4108 ROBERT MILNE, P.E. - PARTNER (304) 624-4108 JONATHAN CARPENTER, P.E.-PARTNER (304)-343-7601</small>
9. PERSONNEL BY DISCIPLINE		
22 ADMINISTRATIVE	ECOLOGISTS	2 LANDSCAPE ARCHITECTS
5 ARCHITECTS	ECONOMISTS	MECHANICAL ENGINEERS
BIOLOGISTS	ELECTRICAL ENGINEERS	MINING ENGINEERS
38 CADD OPERATORS	2 ENVIRONMENTALISTS	3 PHOTOGRAMMETRISTS
CHEMICAL ENGINEERS	ESTIMATORS	PLANNERS: URBAN REGIONAL
50 CIVIL ENGINEERS	1 GEOLOGISTS	SANITARY ENGINEERS
52 CONSTRUCTION INSPECTORS	HISTORIANS	SOILS ENGINEERS
2 DESIGNERS	HYDROLOGISTS	2 SPECIFICATION
DRAFTSMEN		WRITERS
		80 SURVEYORS
		10 OTHER
		269 TOTAL PERSONNEL
TOTAL NUMBER OF WV REGISTERED PROFESSIONAL ENGINEERS IN PRIMARY OFFICE: <u>14</u>		
*RPEs other than Civil and Mining must provide supporting documentation that qualifies them to supervise and perform this type of work.		
10. HAS THIS JOINT-VENTURE WORKED TOGETHER BEFORE? YES NO Not applicable		

11. OUTSIDE KEY CONSULTANTS/SUBCONSULTANTS ANTICIPATED TO BE USED. Attach OSR "Consultant Qualification Questionnaire"

NAME AND ADDRESS:	SPECIALTY:	WORKED WITH BEFORE _____ YES _____ NO
NAME AND ADDRESS:	SPECIALTY:	WORKED WITH BEFORE _____ YES _____ NO
NAME AND ADDRESS:	SPECIALTY:	WORKED WITH BEFORE _____ YES _____ NO
NAME AND ADDRESS:	SPECIALTY:	WORKED WITH BEFORE _____ YES _____ NO
NAME AND ADDRESS:	SPECIALTY:	WORKED WITH BEFORE _____ YES _____ NO
NAME AND ADDRESS:	SPECIALTY:	WORKED WITH BEFORE _____ YES _____ NO
NAME AND ADDRESS:	SPECIALTY:	WORKED WITH BEFORE _____ YES _____ NO

11. OUTSIDE KEY CONSULTANTS/SUBCONSULTANTS ANTICIPATED TO BE USED. Attach OSR "Consultant Qualification Questionnaire"

NAME AND ADDRESS:	SPECIALTY:	WORKED WITH BEFORE _____ YES _____ NO
NAME AND ADDRESS:	SPECIALTY:	WORKED WITH BEFORE _____ YES _____ NO
NAME AND ADDRESS:	SPECIALTY:	WORKED WITH BEFORE _____ YES _____ NO
NAME AND ADDRESS:	SPECIALTY:	WORKED WITH BEFORE _____ YES _____ NO
NAME AND ADDRESS:	SPECIALTY:	WORKED WITH BEFORE _____ YES _____ NO
NAME AND ADDRESS:	SPECIALTY:	WORKED WITH BEFORE _____ YES _____ NO
NAME AND ADDRESS:	SPECIALTY:	WORKED WITH BEFORE _____ YES _____ NO

12. A. Is your firm experienced in Special Reclamation remediation/ Mine Reclamation Engineering?

YES Description and number of projects: THRASHER ENGINEERING HAS PERFORMED ENGINEERING DESIGN SERVICES TO THE WV DEP FOR BOTH DRAINAGE AND PORTAL AML PROJECTS AS WELL AS FOR WATER LINE AND WATER TREATMENT PLANT PROJECTS RELATED TO AML. NUMEROUS PROJECTS INVOLVING LAND REMEDIATION, STORM WATER DRAINAGE, SLIP REPAIR, MASS GRADING IN RELATION TO SITE DEVELOPMENT AND HIGHWAY PROJECTS. 8 - WV DEP Pleasant Valley Highwall, Roger Camp Hill, Anglin's Run, Roaring Creek, Overfield CS&P, Squires Creek, Lyons Landslide and Laurel Run #1

B. Is your firm experienced in soil analysis and coal refuse analyses?

YES Description and number of projects: THRASHER ENGINEERING MAINTAINS AN AASHTO CERTIFIED MATERIALS TESTING AND ANALYSIS LAB AT ITS CLARKSBURG AND BECKLEY OFFICES. SOIL ANALYSIS EXPERIENCE IS SPECIFICALLY IN GRADATIONS AND CLASSIFICATION. 8 - WV DEP Pleasant Valley Highwall, Roger Camp Hill, Anglin's Run, Roaring Creek, Overfield CS&P, Squires Creek, Lyons Landslide and Laurel Run #1

C. Is your firm experienced in hydrology and hydraulics for handling mine water discharges on mining sites?

YES Description and number of projects: THROUGH OUR WORK IN THE PLANNING AND DESIGN OF BRIDGES FOR THE WEST VIRGINIA DEPARTMENT OF HIGHWAYS AND WATER LINE EXTENSION PROJECTS, THRASHER ENGINEERING HAS EXTENSIVE EXPERIENCE IN HYDROLOGY. WE ALSO HAVE EXTENSION EXPERIENCE IN HYDRAULIC MODELING FOR WATER AND WASTEWATER PROJECTS THROUGHOUT WEST VIRGINIA. 8 - WV DEP Pleasant Valley Highwall, Roger Camp Hill, Anglin's Run, Roaring Creek, Overfield CS&P, Squires Creek, Lyons Landslide and Laurel Run #1

D. Does your firm produce its own aerial photography and development of contour mapping?

YES Description and number of projects: _____

NO WE UTILIZE THE SERVICES OF NUMEROUS FIRMS, INCLUDING PENTREE, INC. WHICH IS AN AFFILIATE COMPANY OF THRASHER ENGINEERING INC. THROUGH THE RESOURCE ENGINEERING GROUP HOLDING COMPANY.

E. Is your firm experienced in design of highwall elimination, grading and material handling plans for land reclamation?

YES Description and Number of Projects: 8 - WV DEP Pleasant Valley Highwall, Roger Camp Hill, Anglin's Run, Roaring Creek, Overfield CS&P, Squires Creek, Lyons Landslide and Laurel Run #1

NO

13. PERSONAL HISTORY STATEMENT OF PRINCIPALS AND ASSOCIATES RESPONSIBLE FOR OSR PROJECT DESIGN (Furnish complete date but keep to essentials)

NAME & TITLE (Last, First, MI) Biller, Chadwick, D.	YEARS OF EXPERIENCE	
	YEARS OF OSR DESIGN EXPERIENCE 4	YEARS OF OSR RELATED DESIGN EXPERIENCE 18

Brief explanation of responsibilities: Mr. Biller has experience in all aspects of engineering with specific emphasis on site development, highways, roads, bridges, and airports. Mr. Biller joined Thrasher Engineering in 1999 and is a partner of Thrasher Engineering. For Thrasher Engineering, Mr. Biller is responsible for WV DEP AML project and public and private site development projects, specializing in airports, highways, roads and bridges. As Project Manager for all of the firm's WVDOT/DOH projects, he has extensive knowledge of state and federal building standards.

EDUCATION (Degree, year, specialization)
B.S. Civil Engineering, 1992 – West Virginia University

MEMBERSHIP IN PROFESSIONAL ORGANIZATIONS	REGISTRATION (Type, year, state)
<input type="checkbox"/> American Society of Civil Engineers <input type="checkbox"/> Society of American Military Engineers <input type="checkbox"/> National Society of Professional Engineers	<input type="checkbox"/> Registered Professional Engineer(PE),State of West Virginia #13620 <input type="checkbox"/> Registered Professional Engineer (PE),State of Pennsylvania #PE056012E <input type="checkbox"/> Registered Professional Engineer (PE),State of Ohio #64594

13. PERSONAL HISTORY STATEMENT OF PRINCIPALS AND ASSOCIATES RESPONSIBLE FOR OSR PROJECT DESIGN (Furnish complete date but keep to essentials)

NAME & TITLE (Last, First, MI) Rohrbaugh, April	YEARS OF EXPERIENCE	
	YEARS OF OSR DESIGN EXPERIENCE 2	YEARS OF OSR RELATED DESIGN EXPERIENCE 7

Brief explanation of responsibilities: Mrs. Rohrbaugh joined Thrasher Engineering in January of 2006 and serves as Project Manager / Staff Engineer in the site department at the Oakland, Maryland branch. Mrs. Rohrbaugh has experience in all aspects of site engineering, taking projects from survey to concept to construction. Her specialties include: design surveying consisting of both field traversing and survey locations and aerial mapping. Conceptual Planning: planning for residential, commercial, and recreational developments. Site / Land Development Engineering: geometric layout of sites, subdivisions, and roads, grading, drainage, storm water management, erosion and sediment control, and various regulatory permitting requirements.

EDUCATION (Degree, year, specialization)
B.S. Civil Engineering Technology – Fairmont State University, 2003

MEMBERSHIP IN PROFESSIONAL ORGANIZATIONS N/A	REGISTRATION (Type, year, state) N/A
---	---

13. PERSONAL HISTORY STATEMENT OF PRINCIPALS AND ASSOCIATES RESPONSIBLE FOR OSR PROJECT DESIGN (Furnish complete date but keep to essentials)

NAME & TITLE (Last, First, MI) Hovatter, Richard (RJ), P.E.	YEARS OF EXPERIENCE	
	YEARS OF OSR DESIGN EXPERIENCE 8	YEARS OF OSR RELATED DESIGN EXPERIENCE 8

Brief explanation of responsibilities: Mr. Hovatter joined the Thrasher Engineering team in 2011 and serves as project manager / engineer from the Clarksburg office. He bring extensive knowledge and experience in abandoned mine land and emergency situations such as landslides

and mine subsidence. He has over thirteen years of AutoCAD and site development software experience to go along with his training. Mr.

Hovatter is responsible for the designs, scheduling, collection and reporting of mine surface, sediment erosion control plans and waterline feasibility studies.

EDUCATION (Degree, year, specialization)
B.S. Civil Engineering Technology – Fairmont State University, 2002

MEMBERSHIP IN PROFESSIONAL ORGANIZATIONS
N/A

REGISTRATION (Type, year, state):
 Professional Engineer (P.E.), 2009, State of West Virginia
 Professional Engineer (P.E.), 2010, State of Pennsylvania

13. PERSONAL HISTORY STATEMENT OF PRINCIPALS AND ASSOCIATES RESPONSIBLE FOR OSR PROJECT DESIGN (Furnish complete date but keep to essentials)

NAME & TITLE (Last, First, MI) Haveron, Richard, L., P.S.	YEARS OF EXPERIENCE	
	YEARS OF OSR DESIGN EXPERIENCE	YEARS OF OSR RELATED DESIGN EXPERIENCE

Brief explanation of responsibilities: Mr. Haveron joined the Thrasher Engineering team in 2011. He has been a registered professional surveyor since 1988 in West Virginia and 1990 in Virginia. Mr. Haveron brings many years of experience with him in the construction industry involving project

supervision estimation and quantity take-off from various types of construction plans, and has prepared environmental permits of different types of operations from quarry permits to high voltage transmission lines. He has vast experience with Global Positioning Systems (GPS) and survey grad

mapping systems. Mr. Haveron also has extensive experience with survey and engineering software and GIS mapping.

EDUCATION (Degree, year, specialization)
A.S. in Forestry – Glenville State College, A.S. in Surveying – Glenville State College

MEMBERSHIP IN PROFESSIONAL ORGANIZATIONS
 American Congress on Surveying & Mapping
 West Virginia Society of Professional Surveyors

REGISTRATION (Type, year, state)
 Registered Professional Surveyor in West Virginia and Virginia

14. PROVIDE A LIST OF SOFTWARE AND EQUIPMENT AVAILABLE IN THE PRIMARY OFFICE WHICH WILL BE USED TO COMPLETE OSR DESIGN SERVICES

TEI provides one of the largest networks of computer aided design (CAD) equipment, software and trained personnel in the State of West Virginia.

Civil 3D, Carlson and Microstation V8 software is utilized at 70 CAD stations within the Group. Additionally, equipment includes 10 large format (size E)

plotters and 5 large format plotter / scanners. Two digital 3D Soft Copy Mapping Stations, 1 Zeiss Analytical Stereo Data Collector and 1 VX Digital Negative

Scanner.

Thrasher Engineering also utilizes top of the line survey equipment. Our survey work is accomplished with global positioning systems (GPS) and electronic distance measuring (EDM) survey stations with data gathering capabilities. This equipment includes:

- Leica T502 Total Station Instrument
- Trimble GPS
- Leica Geosystem System 500 GPS
- Leica Ski Post Processing Software
- Topcon G600 Total Station Instrument
- Leica 303 Total Station Instrument
- Leica 307 Total Station Instrument
- Leica 403 Total Station Instrument
- Leica 405 Total Station Instrument
- Leica 407 Total Station Instrument
- Leica 703 Total Station Instrument

CAD plans are prepared by both dedicated CAD employees and by staff engineers and engineering technicians in each of the firm's offices. This equipment

allows our design department to perform accurate work quickly and efficiently. All departments have the capability to electronically transmit data to clients

requesting this service. This blend of experienced personnel utilizing modern equipment results in successful projects and satisfied clients.

15. CURRENT ACTIVITIES ON WHICH YOUR FIRM IS THE DESIGNATED ENGINEER OF RECORD				
PROJECT NAME, TYPE & LOCATION	NAME & ADDRESS OF OWNER	NATURE OF YOUR FIRM'S RESPONSIBILITY	ESTIMATED CONSTRUCTION COST	PERCENT COMPLETE
PLEASANT VALLEY HIGHWALL	WV DEP-DEPARTMENT OF AML 601 57 TH STREET, SE CHARLESTON, WV 25304	ENGINEERING DESIGN FOR PORTAL SEALING, DRAINAGE AND BACKFILLING HIGHWALL WITH REFUSE	PRE-DESIGN MEETING 7/10	0%
ROGER CAMP HILL	WV DEP-DEPARTMENT OF AML 601 57 TH STREET, SE CHARLESTON, WV 25304	DRAINAGE AND RECLAIMING ½ ACRE WATER IMPOUNDMENT	\$100,000.00	75%
ANGLIN'S RUN AND ROARING CREEK STREAM AML RECLAMATION BARBOUR AND RANDOLPH COUNTIES, WV	WV DEP-DEPARTMENT OF AML 601 57th Street, SE Charleston, WV 25304	ENGINEERING DESIGN FOR PORTAL SEALING, DRAINAGE AND RECLAMATION	\$700,000.00	100%
OVERFIELD LAFFERTY CSP BARBOUR COUNTY, WV	WV DEP-DEPARTMENT OF AML 601 57 TH STREET, SE CHARLESTON, WV 25304	ENGINEERING DESIGN FOR PORTAL SEALING, DRAINAGE AND RETAINING WALL	\$450,000.00	100%
SQUIRES CREEK PORTALS / REFUSE PRESTON COUNTY, WV	WV DEP-DEPARTMENT OF AML 601 57 TH STREET, SE CHARLESTON, WV 25304	ENGINEERING DESIGN FOR PORTAL SEALING, DRAINAGE AND BACKFILLING HIGHWALL WITH REFUSE	\$500,000.00	100%
WHITE OAKS BUSINESS PARK SITE DEVELOPMENT AND UTILITIES HARRISON COUNTY, WV	HIGH TECH CORRIDOR DEVELOPMENT, LLC MR. JACK KEELEY PO BOX 1532	SITE DEVELOPMENT DESIGN (LAND PLANNING, GRADING, UTILITIES) SURVEY, CONST. MGT, MATERIALS TESTING	\$12,100,000.00	95%
McHENRY BUSINESS PARK SITE DEVELOPMENT AND UTILITIES GARRETT COUNTY, MD	GARRETT COUNTY EDA 203 SOUTH 4TH STREET COURTHOUSE ROOM 208 OAKLAND, MD 21550 301-334-1921	SITE DEVELOPMENT DESIGN (LAND PLANNING, GRADING, UTILITIES) SURVEY, CONST. MGT, MATERIALS TESTING	\$3,500,000.00	65%
LYONS LANDSLIDE HARRISON COUNTY, WV	WV DEP-DEPARTMENT OF AML 601 57 TH STREET, SE CHARLESTON, WV 25304	REPAIR SLIP AREA WITH A PILE RETAINING WALL	\$700,000.00	50%
LAUREL RUN #1 PRESTON COUNTY, WV	WV DEP-DEPARTMENT OF AML 601 57 TH STREET, SE CHARLESTON, WV 25304	ENGINEERING DESIGN FOR PORTAL SEALING, DRAINAGE AND BACKFILLING HIGHWALL WITH REFUSE	\$1,500,000.00	40%
TOTAL NUMBER OF PROJECTS: 6 (Total in full approximately 30 Site Development – Approximately 40 Million)			TOTAL ESTIMATED CONSTRUCTION COSTS: \$18,600,000.00	

17. COMPLETED WORK WITH IN LAST 5 YEARS ON WHICH YOUR FIRM WAS THE DESIGNATED ENGINEER OF RECORD

PROJECT NAME, TYPE & LOCATION	NAME & ADDRESS OF OWNER	ESTIMATED CONSTRUCTION COST	YEAR	CONSTRUCTED (YES OR NO)
<p>RALEIGH MEMORIAL AIRPORT RALEIGH COUNTY, WV</p>	<p>RALEIGH CO AIRPORT AUTHORITY 176 AIRPORT CIRCLE, ROOM 115 BEAVER, WV 25813-9475</p>	<p>\$5,000,000.00 - PHASE I</p>	<p>2007</p>	<p>YES</p>
<p>WOLFE CREEK PARK FAYETTE COUNTY, WV</p>	<p>FAYETTE COUNTY COMMISSION FAYETTE COUNTY COURTHOUSE 100 COURT STREET FAYETTE, WV 25840-0307</p>	<p>\$4,500,000. - PHASE 1</p>	<p>2007</p>	<p>YES</p>
<p>PINECREST DEVELOPMENT RALEIGH COUNTY, WV</p>	<p>PINECREST DEV AUTHORITY 200 MAIN STREET BECKLEY, WV 25801-4613</p>	<p>\$1,500,000.00</p>	<p>2007</p>	<p>YES</p>
<p>CITY OF PARSONS SANITARY SEWER LINE EXTENSION TUCKER COUNTY, WV</p>	<p>PARSONS, CITY OF 341 2ND ST. PARSONS, WV 26287</p>	<p>\$ 900,000</p>	<p>2007</p>	<p>YES</p>
<p>TOWN OF FARMINGTON WATER LINE REPLACEMENT PROJECT MARION COUNTY, WV</p>	<p>TOWN OF FARMINGTON 1314 MILL STREET FARMINGTON, WV 26571</p>	<p>\$1,300,000.</p>	<p>2007</p>	<p>YES</p>
<p>CITY OF KINGWOOD WHETSELL SETTLEMENT WATER LINE EXTENSION PRESTON COUNTY, WV</p>	<p>KINGWOOD, CITY OF 313 TUNNELTON ST. KINGWOOD, WV 26537-1462</p>	<p>\$ 420,000.</p>	<p>2007</p>	<p>YES</p>

NORTON- JING-JIMTOWN PSD WATER LINE EXTENSION RANDOLPH COUNTY, WV	NORTON-HARDING-JIMTOWN PSD P.O. BOX 87 SCOTT ROAD NORTON, WV 26285	\$1,000,000	2007	YES
TOWN OF BATH - BERKELEY SPRINGS WATER WORKS MORGAN COUNTY, WV	TOWN OF BATH 271 WILKES STREET BERKELEY SPRINGS, WV 25411	\$2,000,000	2007	YES

18. COMPLETED WORK WITHIN LAST 5 YEARS ON WHICH YOUR FIRM HAS BEEN A SUB-CONSULTANT TO OTHER FIRMS (INDICATE PHASE OF WORK WHICH YOUR FIRM WAS RESPONSIBLE)

PROJECT NAME, TYPE & LOCATION	NAME & ADDRESS OF OWNER	ESTIMATED CONSTRUCTION COST OF YOUR FIRM'S PORTION	YEAR	CONSTRUCTED (YES OR NO)	FIRM ASSOCIATED WITH
GLENNVILLE FEDERAL CORRECTIONAL INST. SITE DEVELOPMENT GILMER COUNTY, WV	FEDERAL BUREAU OF PRISONS 320 1 ST STREET NW 500-6 WASHINGTON, DC 20534	\$96,000,000	2003	YES	BELL JUSTICE FACILITIES
FEDERAL BUREAU OF PRISONS -CANAAN FACILITY - SITE DEVELOPMENT - SCRANTON, PA	FEDERAL BUREAU OF PRISONS 320 1 ST STREET NW 500-6 WASHINGTON, DC 20534	\$120,000,000	2002	YES	BELL JUSTICE FACILITIES
FAIRMONT STATE COLLEGE - STUDENT DORMITORY - SITE DEVELOPMENT- FAIRMONT, WV	FAIRMONT STATE UNIVERSITY 1201 LOCUST AVENUE FAIRMONT, WV 26554-2491	\$6,000,000	2004	YES	VOA ARCHITECTS
FAIRMONT STATE COLLEGE - PARKING GARAGE- SITE DEVELOPMENT -FAIRMONT, WV	FAIRMONT STATE UNIVERSITY 1201 LOCUST AVENUE FAIRMONT, WV 26554-2491	\$4,000,000	2003	YES	MARCH-WESTIN
FAIRMONT STATE UNIVERSITY PEASTER CENTER SITE DEVELOPMENT - FAIRMONT, WV	FAIRMONT STATE UNIVERSITY 1201 LOCUST AVENUE FAIRMONT, WV 26554-2491	\$400,000.	2005	YES	VOA ARCHITECTS
FAIRMONT STATE UNIVERSITY CREATIVE ARTS AND ENGINEERING TECH BUILDING SITE DEVELOPMENT FAIRMONT, WV	FAIRMONT STATE UNIVERSITY 1201 LOCUST AVENUE FAIRMONT, WV 26554-2491	\$100,000.	2007	YES	DESIGN ALLIANCE OMNI ASSOCIATES

19. Use this space to provide any additional information or description of resources supporting your firm's qualifications to perform work for the West Virginia Office of Special Reclamation. -See Attachment - Statement of Qualifications

20. The foregoing is a statement of facts

Signature: _____

Title: Partner / Principal-in-Charge

Date: June 26, 2012

Printed Name: Chadwick D. Biller, P.E.

