

# N O T I C E

Due to a mechanical error in one of the Purchasing Division's official time clocks on Tuesday, March 20 to Thursday, March 22, 2012, the stamp noted on some bids may have the correct day and time; however, the month that is noted is "February," but should have read "March."



# EXPRESSION OF INTEREST

To provide

**Professional Engineering Design  
Services  
and  
Construction Monitoring Services  
for the**

**East Lynn II**

**Wayne County, West Virginia**

**DEP15585**

**Prepared for the**

**West Virginia Department  
of Environmental Protection**

**Office of AML&R**

**CTL Engineering of West Virginia, Inc.**

**733 Fairmont Road  
Morgantown, WV 26501**

**510 C Street  
South Charleston, WV 25303**

RECEIVED

2012 FEB 21 AM 11:39

WV PURCHASING  
DIVISION

# *Table of Contents*

## ***Statement of Qualifications to Provide Professional Engineering Services***

1. INTRODUCTION
2. PROJECT MANAGEMENT PLAN
3. CORPORATE HISTORY & QUALIFICATIONS
4. CCQQ – ATTACHMENT “B”
5. RPEM – ATTACHMENT “C”



March 20, 2012

**West Virginia Department of Environmental Protection**  
Office of Abandoned Mine Lands & Reclamation  
601 57<sup>th</sup> Street SE  
Charleston, WV 25304

**Re: RFQ #DEP 15585  
Expression of Interest  
Design Engineering Services Proposal  
East Lynn II Project**

Gentlemen:

CTL Engineering of WV, Inc. is very pleased to present this proposal to provide design engineering and related services for the West Virginia Abandoned Mine Lands and Reclamation Program. With over 80 years in the business, we feel our firm can provide the professionals and facilities the State of West Virginia is looking for.

CTL has evolved into a recognized leader in the Abandoned Mine Lands Engineering Design and Investigation field. We offer the services necessary to provide a non-subcontract, quality product to support your program. Our capabilities include laboratory facilities, drilling rigs, surveying systems, design equipment, and a qualified staff. We have 12 Professional Engineers, five of which are registered in West Virginia and have direct AML Design Experience. Our in-house disciplines of professionals include: Civil & Mining Engineers, CAD Designers, Surveyors, Geologists, Hydrologists and Biologists. We are experienced in completing more than 50 projects annually that require aerial mapping, support surveying with GPS, and final contouring for design.

Our in-house ability reaches beyond simply being an AML design firm. We also have extensive contract administration and management experience with the procedures of the state of West Virginia. Our invoicing procedures and accounting software has been accepted, used, and audited by various state agencies.

CTL's primary staff has over 125 years of experience with mine reclamation engineering on both a national and international level. Our qualifications and facilities are unsurpassed when it comes to Abandoned Mine Reclamation Design. With offices in Charleston and Morgantown, we can effectively respond to any AML Design tasks throughout West Virginia. In addition, we have six full time design teams available to complete AML design projects. Our corporation and individual staff members have extensive experience relative to multi-site reclamation design, subsurface evaluation, abandoned portal seals, road upgrades, stream restoration and drainage control structures. The East Lynn II

Project is similar in scope to several of the AML design projects we have successfully completed. Attached to this proposal are numerous examples of similar projects successfully designed and completed, including several projects that were nominated and chosen as National AML Reclamation Award winners!

We sincerely appreciate the opportunity to submit this proposal to you for consideration. Should you have any questions or need additional information, please contact our office.

Respectfully submitted,

**CTL Engineering of West Virginia, Inc.**



Royden L. Loucks  
Director Business Development





State of West Virginia  
 Department of Administration  
 Purchasing Division  
 2019 Washington Street East  
 Post Office Box 60130  
 Charleston, WV 25305-0130

**Request for Quotation**

RFQ NUMBER  
**DEP15585**

PAGE  
**1**

ADDRESS CORRESPONDENCE TO ATTENTION OF  
**GUY NISBET  
 304-558-8802**

RFQ COPY

**TYPE NAME/ADDRESS HERE**  
 CTL Engineering of West Virginia,  
 Inc.  
 733 Fairmont Road  
 Morgantown, WV 26501

RFQ COPY

**ENVIRONMENTAL PROTECTION  
 DEPARTMENT OF  
 OFFICE OF AML&R  
 601 57TH STREET SE  
 CHARLESTON, WV  
 25304  
 304-926-0499**

DATE PRINTED	TERMS OF SALE	SHIP VIA	FOB	FREIGHT TERMS
01/30/2012				

BID OPENING DATE: **03/22/2012** BID OPENING TIME **01:30PM**

LINE	QUANTITY	UOP	CAT. NO.	ITEM NUMBER	UNIT PRICE	AMOUNT
0001	1	JB		906-29		
<p><b>EAST LYNN II DESIGN</b></p> <p><b>EXPRESSION OF INTEREST</b></p> <p>THE WEST VIRGINIA PURCHASING DIVISION, FOR THE AGENCY, THE WEST VIRGINIA DEPARTMENT OF ENVIRONMENTAL PROTECTION, IS SOLICITING EXPRESSIONS OF INTEREST FOR PROFESSIONAL ENGINEERING DESIGN SERVICES AND CONSTRUCTION MONITORING SERVICES AT THE EAST LYNN II PROJECT IN WAYNE COUNTY, WEST VIRGINIA PER THE FOLLOWING BID REQUIREMENTS AND ATTACHED SPECIFICATIONS.</p> <p>BANKRUPTCY: IN THE EVENT THE VENDOR/CONTRACTOR FILES FOR BANKRUPTCY PROTECTION, THE STATE MAY DEEM THIS CONTRACT NULL AND VOID, AND TERMINATE SUCH CONTRACT WITHOUT FURTHER ORDER.</p> <p>ANY INDIVIDUAL SIGNING THIS BID IS CERTIFYING THAT: (1) HE OR SHE IS AUTHORIZED BY THE BIDDER TO EXECUTE THE BID OR ANY DOCUMENTS RELATED THERE TO ON BEHALF OF THE BIDDER, (2) THAT HE OR SHE IS AUTHORIZED TO BIND THE BIDDER IN A CONTRACTUAL RELATIONSHIP, AND (3) THAT THE BIDDER HAS PROPERLY REGISTERED WITH ANY STATE AGENCIES THAT MAY REQUIRE REGISTRATION.</p>						

SEE REVERSE SIDE FOR TERMS AND CONDITIONS

SIGNATURE: TELEPHONE: (304) 292-1135 DATE: 3/20/2012

TITLE: President FEIN: 55-063-1834 ADDRESS CHANGES TO BE NOTED ABOVE

WHEN RESPONDING TO RFQ, INSERT NAME AND ADDRESS IN SPACE ABOVE LABELED 'VENDOR'

STATE OF WEST VIRGINIA  
Purchasing Division

**PURCHASING AFFIDAVIT**

West Virginia Code §5A-3-10a states: No contract or renewal of any contract may be awarded by the state or any of its political subdivisions to any vendor or prospective vendor when the vendor or prospective vendor or a related party to the vendor or prospective vendor is a debtor and the debt owed is an amount greater than one thousand dollars in the aggregate.

**DEFINITIONS:**

"Debt" means any assessment, premium, penalty, fine, tax or other amount of money owed to the state or any of its political subdivisions because of a judgment, fine, permit violation, license assessment, defaulted workers' compensation premium, penalty or other assessment presently delinquent or due and required to be paid to the state or any of its political subdivisions, including any interest or additional penalties accrued thereon.

"Debtor" means any individual, corporation, partnership, association, limited liability company or any other form or business association owing a debt to the state or any of its political subdivisions. "Political subdivision" means any county commission; municipality; county board of education; any instrumentally established by a county or municipality; any separate corporation or instrumentally established by one or more counties or municipalities, as permitted by law; or any public body charged by law with the performance of a government function or whose jurisdiction is coextensive with one or more counties or municipalities. "Related party" means a party, whether an individual, corporation, partnership, association, limited liability company or any other form or business association or other entity whatsoever, related to any vendor by blood, marriage, ownership or contract through which the party has a relationship of ownership or other interest with the vendor so that the party will actually or by effect receive or control a portion of the benefit, profit or other consideration from performance of a vendor contract with the party receiving an amount that meets or exceeds five percent of the total contract amount.

**EXCEPTION:** The prohibition of this section does not apply where a vendor has contested any tax administered pursuant to chapter eleven of this code, workers' compensation premium, permit fee or environmental fee or assessment and the matter has not become final or where the vendor has entered into a payment plan or agreement and the vendor is not in default of any of the provisions of such plan or agreement.

Under penalty of law for false swearing (West Virginia Code §61-5-3), it is hereby certified that the vendor affirms and acknowledges the information in this affidavit and is in compliance with the requirements as stated.

**WITNESS THE FOLLOWING SIGNATURE**

Vendor's Name: CTL Engineering of West Virginia, Inc.

Authorized Signature: \_\_\_\_\_ Date: 3/20/2012

State of West Virginia

County of Monongalia, to-wit:

Taken, subscribed, and sworn to before me this 20<sup>th</sup> day of March, 2012.

My Commission expires 1/17, 2020

AFFIX SEAL HERE

NOTARY PUBLIC Kathleen J O'Brien



# *Project Management Plan*

Our approach to the **East Lynn II Project** will be similar to other CTL AML refuse pile stabilization and regrading projects. The Project Management Plan we have developed for these sites are as follows:

- The project manager will be solely responsible for expedient and accurate completion of each phase of the individual projects performed under this contract. He will review the project sites and discuss the specific scope of work for the project with the project representative from the WVDEP. A cost proposal will be prepared, in accordance with contract unit rates, based upon an estimate of manpower, equipment, and laboratory needs.
- CTL will then mobilize a fully equipped survey crew to set survey control and map the project sites. Permanent control monuments will be established to ensure that the construction contractor can tie into the necessary baselines. The project manager will supervise the surveying tasks and provide budgetary control for this portion of the work.
- A geotechnical investigation shall be performed to define limits of refuse and determine mine pools behind the portals for mine seal design. This investigation shall be performed with a focus on safety to insure the safety of the local inhabitants and dwellings as well as the safety of the drilling and geotechnical personnel.
- As required a soil, refuse and water sampling and analyses will be performed to provide sufficient data to design remediation parameters for the project.
- Should field conditions dictate that additional work or a major modification is required, the project manager will contact the WVDEP representative immediately to confirm the changed conditions.
- Following completion of the surveying, field investigation, and any material sampling, the analytical design work will begin. The Project Manager and Engineer will review the project data, evaluate the feasible alternatives and prepare a preliminary set of construction documents. The documents will include at a minimum:



1. A site map indicating existing conditions;
  2. A tax map overlay with the parcels identified that may be impacted by the proposed design;
  3. Proposed grading plans including excavation of all refuse material and backfill of highwalls;
  4. Design of mine seals specific to each portal with details;
  5. Design of upgrade to access roads;
  6. Site Profiles;
  7. Cross Sections;
  8. Drainage systems and control structures, with details;
  9. Survey control points;
  10. Miscellaneous Site details.
- CTL will also provide all necessary data for NPDES permits including S&E Control Plans as required for the site construction and if deemed necessary, perform environmental assessments.
  - In addition to preparation of the above-described drawings, a complete set of specifications will be prepared and outlined to describe in detail the scope and methods of work to be accomplished. An estimate of construction costs and the design calculations will also be submitted to the WVDEP for review and future reference.
  - Following the submission of the construction documents, a project design review meeting will be coordinated with the WVDEP, CTL, and appropriate individuals to review the proposed plans.
  - Recommendations for plan revisions will be discussed and implemented, as necessary, into the final design documents. Upon completion, all final documents, drawings, plans and specifications will be forwarded to the WVDEP for bidding purposes.
  - Construction observation will be provided during the construction phase of the projects
  - At the request of the WVDEP, CTL will provide construction observation personnel.

Our Project Manager and/or Engineer will coordinate the pre-bid and pre-construction conferences with the WVDEP to address any questions and supply the necessary survey control data. Periodic inspections may be conducted by our Project Manager, as deemed necessary by the WVDEP, to address specific problems that arise during construction. A report will be prepared by CTL following each of these meetings detailing the findings, conclusions, recommendations, and responses to pertinent questions.

# *Project Scope*

## East Lynn II

### Project Scope of Work:

Design diversion channels, ditches and/or underdrains to transport drainage safely off-site

Design regarding plan to excavate (where necessary) and regrade refuse material and highwall elimination

Design up-grade to access road

Design mine seals relevant to each portal to be sealed

Provide testing and analytical services for soils and water quality from site

Provide drilling services if subsurface investigation for mine pool testing

Provide plans for site clean-up and structure removal

Provide revegetation plan including soil cover for all areas disturbed during construction

Provide required data for S&E Control Plans and NPDES Permit submittal by AML

# CTL Engineering of West Virginia, Inc.

*An Employee Owned Company*

**CTL Engineering of West Virginia, Inc.** (CTL of WV) is a full service consulting civil engineering, testing, inspection, and analytical services company. CTL Engineering of West Virginia, Inc. was formed in 1981 to service West Virginia, Maryland and Pennsylvania. CTL of WV is part of CTL Engineering, Inc. formerly known as Columbus Testing Laboratory, which was established in Columbus, Ohio in 1927 as an independent engineering testing laboratory serving the local community. During the early years, our expertise focused mainly on soils, foundation engineering, and construction testing and inspection services.

*The Engineering News-Record* ranked CTL Engineering, Inc. among top 500 architectural and engineering firms in the nation. CTL Engineering maintains a staff of over 200 employees, including registered engineers, architects, chemists, environmental scientists, geologists, hydrologists, wetland scientists and technicians.

CTL of WV provides total Civil Site Design for development projects throughout West Virginia. These designs include site layouts, utility design and interconnections, stormwater management design, parking and roadway design, permit preparation and submittal, and interaction with architects, owners and all interested parties to the projects.

CTL of WV provides all necessary surveying services required of projects including boundary and ALTA surveys, topographic surveys, aerial survey control, GPS surveys, and site construction surveys to assure proper construction and compliance with specifications of the project.

CTL of WV has become an industry leader in geotechnical design and investigations. In the past 5 years, CTL of WV has provided over 1000 geotechnical investigations including drilling, sampling and design for both the public and private sectors. CTL of WV is regularly called upon to provide unique geotechnical engineering design services for projects throughout the United States and Canada.

CTL of WV provides environmental services for developments throughout West Virginia and Maryland. Environmental Services include Phase I and II ESAs, wetland delineation and mitigation plans, State and Federal 401 and 404 Permit submittals, Ms4 Phase II storm water permitting, soil and groundwater sampling, asbestos surveys and sampling, lead based paint testing, mold testing, UST removal oversight, hazardous material identification and remedial design and other environmental services as required

CTL of WV provides construction, material and concrete testing and observation services. CTL of WV has ten field technicians providing dedicated construction observation and compliance testing. CTL's in-house material laboratory provides the much needed prompt turn-around required for projects to be successful.

Additional services provided by CTL include Nondestructive Testing and Inspection, Forensic Science, Accident Re-Construction, Roofing Consulting, Product Testing, Laboratories, Analytical Chemistry and Metallurgy Services.





## *AML & Relevant Project Experience*

### HIGHWALLS

- Peninsula Highwalls
- St. Clair Portals
- Collins Mining, ODNR
- Miller Mining, ODNR
- Camp Run Highwall, WVDEP
- Germano Highwall, ODNR
- Midlothian Highwall, MD Bureau of Mines
- Austen Highwall, WVDEP
- Sovern Run, WVDEP
- Ridgeland Highwall, ODNR

### OPEN PITS

- Shinn's Run Portals, WVDEP
- Jones Trucking, ODNR
- General Clay #1 & #2, ODNR
- Sugar Grove, #1, #2, & #3, WVDEP
- Baldwin, Pickens & Lick Run, ODNR
- Miller Road, MD Bureau of Mines
- Rumley Highwall, ODNR
- Tunnelton Gob, WVDEP
- Matthew Run, MD Bureau of Mines

### OPEN MINE SHAFTS



- Kennel Mine Closure, MD Bureau of Mines
- Frostburg North Closure, MD Bureau of Mines
- Zilman Closure, MD Bureau of Mines
- Witch Hazel Mine Shaft, ODNR
- Everettville Portals, WVDEP
- Kempton Mine Shaft, MD Bureau of Mines
- Wellston Mine Shaft, ODNR
- Piney Creek, WVDEP
- Degrava Mine Shaft, ODNR

### **REFUSE PILES**

- Ream Refuse Pile, WVDEP
- Williams Refuse Pile, Private
- Cannalville Refuse Pile, ODNR
- Ocean Gob Pile, MD Bureau of Mines
- Alderson Branch, WVDEP
- Edna Refuse Piles, WVDEP
- American Bituminous Power Partners, ABPP
- Jane Lew Tipple, WVDEP
- Harrison Power Plant, Allegheny Power
- North Fork Refuse Pile, WVDEP
- Austen Highwall Refuse Pile & Portals, WVDEP
- Bull Run Restoration, ODNR

### **MINE SUBSIDENCE**

- Fairmont Subsidence, WV DEP
- Lower Consol Road MD Bureau of Mines
- Terra Haute Airport, IN AML
- Farmington UMC, WV DEP Emergency

- Morningside Baptist, WV DEP Emergency
- Eccles Subsidence, WV DEP
- McArthur Subsidence, WV DEP
- Mark Kempner, NJ Private
- Midlothian Road, MD Bureau of Mines
- Tastee Freeze, MD Bureau of Mines
- WV BRIM
- OMSIUA
- Thomas/Euclid Avenue, WVDEP
- Morgantown Airport, WVDEP
- Rt. 936 Stabilization, MD Bureau of Mines
- Clarksburg Glenwood Hills, WVDEP

### **MINE DRAINAGE/STREAM RESTORATION**

- St. Clair Portals, WV DEP
- Aarons Run, MD Bureau of Mines
- Deckers Creek, WVDEP
- Whiskey Run, ODNR
- Oceola Mills, Penn Mining Corp
- Georges Creek, MD Bureau of Mines
- Bell Mine Drain, ODNR
- Majestic Mine, ODNR
- Blackwater River/Beaver Creek Treatment Project
- Aaron's Run, MD Bureau of Mines

### **MINE FIRES/REFUSE FIRES**

- National Mine Fire, MD Bureau of Mines
- Frontz/Folly Mine Fire, ODNR
- Blue Pennant, WVDEP

- Blue Bell Mine, ODNR
- Red Hollow Burning Refuse, WVDEP
- Jamison Burning Refuse, WVDEP

## LANDSLIDES

- Douglas Avenue Landslide, MD Bureau of Mines
- Cheat Neck Landslide, WV DEP
- McCourt Landslide, ODNR
- Caldonia Hill Slope Stability, MD Bureau of Mines
- Permit 426 Haulroad Landslide, MD Bureau of Mines
- Barr, ODNR Emergency
- Lawrence Landslide, ODNR Emergency
- Hitchcock, ODNR Emergency
- Davollo, ODNR Emergency
- Angle, ODNR Emergency
- Lost Creek Landslide, WV DEP
- Chickwan Landslide, ODNR
- Rt. 1 Landslide, ODNR
- Kitzmiller Landslide, MD Bureau of Mines
- Barton Landslide, Office of Surface Mining

## WATER IMPOUNDMENTS

- Bald Knob, MD Bureau of Mines
- Taylor Creek Impoundment, WVDEP
- CONSOL Impoundment Certifications
- Amigo Smokeless Impoundment, WVDEP
- The Woods, Impoundment Design
- Cypress Emerald Slurry Dam, Cypress Coal
- Enoch Township Impoundment, ODNR

- Pauline Mine, ODNR
- Marsh Hill, MD Bureau of Mines

## **WATER SUPPLY REPLACEMENT**

- Pee Wee Hill Supply Design, MD Bureau of Mines
- Pee Wee Will Water Feasibility Study, MD Bureau of Mines
- Fairview Water Feasibility, WV DEP
- Tioga Water Feasibility, WV DEP
- Douglas Water Feasibility, WV DEP
- Horner's Run Water Feasibility, WV DEP
- Moundsville Water Plant, WVDEP
- Rohr Road, WVDEP
- Peel Tree, WVDEP

## **SPECIAL PROJECTS/ENVIRONMENTAL ISSUES**

- Statewide Monitoring Wells, WV DEP
- Bridge Run Piezometers, WV DEP
- I-70 Subsidence, ODOT
- Glade Run Remediation, Allegheny Development
- Lafayette Road H-Pile Wall, ODNR
- Banff/Canmore Commercial Development, Norwest Calgary
- Blackwater River/Beaver Creek Treatment Project, WVDEP
- Dynamic Compaction of Mine Spoil, THF Realty
- Jane Lew Tipple, WVDEP
- Slab Fork Mine Dump, WVDEP





**CTL Engineering Inc.**

**Professional Services**

*Established 1927*

**Analytical Chemistry**

- ◆ Soil
- ◆ Water
- ◆ Oils
- ◆ Sludges
- ◆ Solid and Hazardous Wastes
- ◆ Liquid and Solid Fuels
- ◆ Metals
- ◆ Organics
- ◆ Construction Materials

**Construction Inspection**

- ◆ Soils, Concrete, Asphalt, Masonry, Fireproofing, and Steel
- ◆ Single and Multi-Story Structures
- ◆ Pavement for Streets, Airports, Etc.
- ◆ Embankments, Fill, Cut, Etc.
- ◆ Earth and Concrete Dams
- ◆ Pre and Post Construction Inspection
- ◆ Floor Flatness

**Drafting Services**

- ◆ AutoCad
- ◆ Microstation
- ◆ Digitizing

**Environmental**

- ◆ Site/Facility Assessment
- ◆ Hydrogeologic Studies and Aquifer Characterization
- ◆ Site Remediation
- ◆ Site Abandonment and Closure Planning
- ◆ Permit Preparation
- ◆ Underground Storage Tank Management
- ◆ Wellhead Protection
- ◆ Asbestos Survey
- ◆ Abatement Monitoring
- ◆ Wetlands Delineation
- ◆ Wetlands Mitigation
- ◆ Wetlands Permitting

**Existing Structure Evaluation**

- ◆ Bridges/Buildings
- ◆ Sonic Velocity Testing
- ◆ Delamination Determination
- ◆ Half Cell Potential Tests

**Facilities Management**

**-Pavement**

- ◆ Condition Assessment
- ◆ Maintenance & Rehabilitation Strategies
- ◆ Prioritization
- ◆ Deterioration Rates
- ◆ Network Needs & Long Range Goals
- ◆ Budgeting

**Forensic Science**

- ◆ Landslide, Soils and Foundation Failures
- ◆ Building Failures
- ◆ Product Liability Investigations
- ◆ Accident Reconstruction
- ◆ Roofing Failures
- ◆ Product Failures
- ◆ Legal Testimony

**Geotechnical**

- ◆ Site Selection
- ◆ Subsurface Exploration – Drilling Services
- ◆ Foundation Analysis & Design
- ◆ Embankment & Earth Dam Analysis
- ◆ Slope Stability Analysis
- ◆ Hydrogeologic Studies
- ◆ Bridges
- ◆ Pavement Design

**Materials Testing**

- ◆ Concrete
- ◆ Soils and Rock
- ◆ Aggregates
- ◆ Concrete and Asphalt Mix Designs
- ◆ Bituminous Materials
- ◆ Clay and Masonry Products
- ◆ Petrographic Studies

**Metallurgy**

- ◆ Fracture Analysis
- ◆ Metallography
- ◆ Application Recommendations
- ◆ Failure Analysis
- ◆ Corrosion studies
- ◆ Tensile and Hardness

**Mining Engineering**

- ◆ Mine Reclamation Design
- ◆ Permit Preparation
- ◆ Mine Plan Design
- ◆ Refuse Disposal Design
- ◆ Drainage Control Structures
- ◆ Environmental Monitoring
- ◆ Subsidence Investigations

**Nondestructive Testing & Inspection**

- ◆ X-ray Radiology
- ◆ Ultrasonic Inspections
- ◆ Magnetic Particle Inspection
- ◆ Liquid Penetrant Inspection
- ◆ Specialized Inspection / Test Programs
- ◆ Level III Services

**Product Testing**

- ◆ Consumer Product Testing
- ◆ Mechanical and Physical Property Testing
- ◆ Hydrostatic Testing
- ◆ Load and Strength Testing
- ◆ Mechanical Engineering Design and Analysis
- ◆ Pressure Gauge Calibration

**Roofing Engineering Services**

- ◆ Design & Construction Administration (Plans and Specifications)
- ◆ Quality Control/ Roof Inspection
- ◆ Roof Surveys Evaluation
- ◆ Moisture – Infrared & Nuclear
- ◆ Seminars Design Maintenance
- ◆ Management Programs
- ◆ Laboratory Testing

**Site/Civil Engineering**

- ◆ Commercial Land Development
- ◆ Residential/Community Planning
- ◆ Infrastructure Planning

**Software Development**

- ◆ Application Software
- ◆ Internet & Intranet

**Surveying & Mapping**

- ◆ Property surveying & boundary determination
- ◆ Topographic mapping development
- ◆ Global Positioning System

**Welding & Quality Control**

- ◆ Shop & Field Certified Welding Inspection
- ◆ Welding and Brazing Qualification
- ◆ Procedure Development
- ◆ QA/QC Programs

**Corporate Headquarters**  
 2860 Fisher Road **Columbus, Ohio 43204**  
 Phone: (614) 276-8123, Fax: (614) 276-6377  
 ctl@ctleng.com  
 www.ctleng.com

**OFFICES:**

CTL of West Virginia.  
 733 Fairmont Road  
**Morgantown, WV 26501**  
 Phone:(304) 292-1135  
 Fax: (304) 296-9302  
 ctlwv@ctleng.com

510 C Street  
**South Charleston, WV 25303**

422 E. Wards Corner  
 Road  
**Cincinnati, OH 45140**  
 Phone: (513) 722-8665  
 Fax: (513) 722-8669  
 ctlcinci@ctleng.com

633 High Street  
**Minford, OH 45653**  
 Phone: (740) 820-8355

3085 Interstate Parkway  
**Brunswick, OH 44212**  
 Phone: (330) 220-8900  
 Fax: (330) 220-8944  
 ctlcleve@ctleng.com

102 Commerce Dr.  
**Wapakoneta, OH 45895**  
 Phone: (419) 738-1447  
 Fax: (419) 738-7670  
 ctlwapak@bright.net

4343 Saguaro Trail  
**Indianapolis, IN 46268**  
 Phone: (317) 295-8650  
 Fax: (317) 295-8395  
 ctlin@ctleng.com



## Civil/Site Engineering

### Services Include:

- ◆ Commercial Land Development
  - ◆ Residential/Community Planning
  - ◆ Infrastructure Planning & Design
  - ◆ Pavement Design and Management
  - ◆ Conceptual Designs/Presentations
  - ◆ Recreational Resort/Facility Planning
  - ◆ Erosion & Sediment Control Design
  - ◆ Stormwater Management Systems
  - ◆ Preliminary Cost Estimates/ Feasibility Analyses
- CTL Engineering's in house staff provide a full array of services in concert with our Site/Civil Department including mapping and surveying services.

*From a Raw Piece of Property --  
CTL Engineering Provides Full Site Layout Design.*

- ◆ Topographic Mapping Development
- ◆ Global Positioning Systems (GPS) Services
- ◆ Aerial Mapping Layout & Control
- ◆ Construction Layout
- ◆ Wetlands Delineation/Flood Plain Determination & Certification
- ◆ Property Survey & Boundary Determination
- ◆ Micrometer Leveling



*CTL Engineering of West Virginia, Inc. provided site plans for this Advance Auto Parts Store in Morgantown, West Virginia*



*CTL Engineering of West Virginia, Inc. provided geotechnical engineering, materials testing, observation services and surveying services for this project.*

# Surveying & Mapping



*CTL Engineering, Inc. provided surveying services for this McDonald's site in Star City, West Virginia*

CTL Engineering, Inc. maintains a full service, in-house survey and mapping team which has extensive experience in performing most common surveying needs and some not so common.

CTL has the professional staff and the latest equipment to support three (3) full survey crews, including a Global Positioning System (GPS) which gives us an added dimension to our surveying and mapping capabilities.

We have performed surveying and mapping on many of our civil site projects and have supplied construction stakeout and monitoring for many of our clients.

## Professional Services:

- ◆ Property surveying and boundary determination
- ◆ Topographic mapping development
- ◆ Aerial mapping layout and control
- ◆ Global Positioning System (GPS)
- ◆ Construction Layout
- ◆ Settlement Plate Monitoring
- ◆ Micrometer Leveling
- ◆ Flood Plain Determination and Certification
- ◆ Wetland Delineations



## Project Synopsis:

- ◆ Residential Subdivision Layout
- ◆ Commercial Development Layout
- ◆ Access Road and Parking Lot Layout
- ◆ Bridge Construction Layout and Monitoring
- ◆ Elevation Certificates (FEMA)
- ◆ Property Survey Projects
- ◆ Stormwater Surveillance Mapping
- ◆ Water body Sounding Studies





# Geotechnical Engineering

The Geotechnical Engineering Department at CTL Engineering routinely performs subsurface investigations, and soil and rock testing. We prepare engineering reports, make recommendations regarding foundation and construction techniques, and perform other pertinent geotechnical services, as dictated by a given project.

## Drilling Services

CTL Engineering owns and operates its own fleet of drill rigs, the largest of which has a capacity to drill and take samples up to 300 feet deep. Our rigs are equipped with large diameter soil and rock core samplers, *in-situ* pressure meters and cone penetrometers. These rotary drilling rigs conduct standard split spoon sampling. Our drill rigs have pumps, wireline and standard coring equipment for proper and efficient execution of subsurface investigations. We can perform pressure meter tests and vane shear tests in the field, in addition to conducting and/or monitoring of well pumps tests.

## Analytical Laboratory

Our Soils Laboratory has consolidometers, triaxial and direct shear apparatus, state-of-the-art permeability devices and normal soils classification equipment.

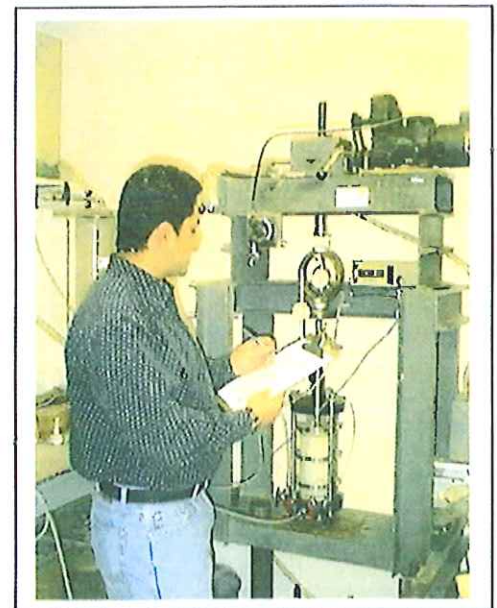
CTL Engineering provides a detailed analysis of the surface and subsurface composition and



*CTL owns and operates a fleet of ten (10) drill rigs*

## Service Listing

- ♦ Complete Subsurface Exploration Study
- ♦ Foundation Analysis
- ♦ Pile, Pier and Caisson Analysis & Inspection
- ♦ Embankment & Earth Dam Analysis
- ♦ Slope Stability Analysis
- ♦ Settlement Analysis
- ♦ Pavement Design
- ♦ Rock & Mineral Testing
- ♦ Hydrogeologic Studies
- ♦ Field and Laboratory Testing of Soils
- ♦ Legal Testimony



*Soils engineers conduct soils tests in CTL's analytical laboratory*

[www.ctleng.com](http://www.ctleng.com)



## Mining Engineering Services

CTL Engineering has experienced engineers, geologists and mining technicians to provide the expertise to insure successful mining operations. We provide abandoned mine land reclamation design and project management, mine subsidence evaluations and remediation plans, hydraulic and hydrology studies, hydrogeologic evaluations, mine permitting, and coal reserve studies.

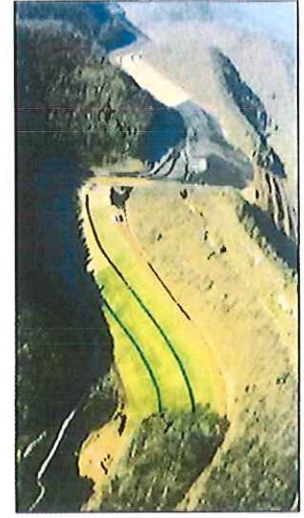
The CTL Mining Engineering Group coordinates with our drilling services and various testing departments to provide a full scope of services to the mining industry. Our laboratories are certified to perform the water and overburden analysis prescribed by federal regulatory programs.

CTL Engineering provides drainage control structure design to comply with the regulatory requirements for controlling and treating site damage. Exploration equipment and remote video camera monitoring are used by CTL Engineering to prepare accurate maps for reclamation, subsidence stabilization measures and mine closures.

We have experienced mechanical and metallurgical engineers on staff to provide mine equipment evaluation and consultation services. CTL Engineering is a proven source for accurate and dependable technical information.

### CTL Mining Services Include:

- ◆ Subsidence Investigations
- ◆ Abandoned Mine Reclamation Design
- ◆ Permit Preparation
- ◆ Mine Design Plan
- ◆ Refuse Disposal Facility
- ◆ Environmental Monitoring
- ◆ Coal, Water and Overburden Analysis
- ◆ Drainage Control Structure Design
- ◆ Failure Analysis
- ◆ Legal Testimony
- ◆ Acid Mine Drainage



*Taylor Creek Impoundment, West Virginia*  
Reclamation of a 120-acre burning refuse pile and dewatering and abandonment of a 24-acre coal-related impoundment.



*Blackwater River, Water Improvement Project, Davis, West Virginia*



*Jamison Burning Refuse Reclamation Project*

CTL Engineering's Environmental Department staff has a combined total of 98 years of experience in managing various types of environmental projects. Our personnel are familiar with regulatory requirements and have established good working relationships with state and local agencies; such as the Ohio EPA, the State Fire Marshal's office, local fire and health departments, etc. Our personnel has conducted thousands of background researches and file reviews at numerous state agencies, including ODNR, OHPO, BUSTR, Ohio EPA, county courthouses and local fire and health departments.

CTL Engineering closely follows the ASTM Standard of Practice 1527-00 as well as any additional requirements placed by the client, such as wetlands assessment, delineation, permitting and mitigation; asbestos survey, sampling, evaluation and abatement monitoring; and similar non-ASTM scope considerations.

CTL Engineering maintains an in-house analytical laboratory as well as experienced geologists, hydrogeologists, and environmental scientists to conduct the background review and site reconnaissance to develop a list of constituents of concern. Our environmental staff has designed, constructed, installed, and operated various types of innovative remedial technologies, such as *in-situ* and *ex-situ* bioremediation, soil vapor extraction, groundwater extraction, free-product recovery, and bioslurping.

The following is a listing of services CTL Engineering provides:

## Management Systems Analysis

### Wetland Systems

- ♦ Wetlands & "Jurisdictional Waters of the State Delineation"
- ♦ Wetland Permitting & Mitigation

### Landfill

- ♦ Site Characterizations
- ♦ Explosive Gas Monitoring
- ♦ Liner and Cover Design
- ♦ Leachate Sampling & Testing

### Pilot Testing Services

- ♦ Soil Vapor Extraction
- ♦ Groundwater Sparging
- ♦ Aquifer Testing
- ♦ Slug Testing
- ♦ Soil Gas Surveys

### Analytical Chemistry

- ♦ GC/MS, AA and IR
- ♦ Solid and Hazardous Waste Characterization
- ♦ Metals and Organics
- ♦ BTEX, TPH and PNA
- ♦ TCLP
- ♦ Liquid and Solid Fuels
- ♦ PCB Analysis

### UST Services

- ♦ Removal & Closure Assessments
- ♦ Contaminant Migration Assessments
- ♦ Remedial Corrective Actions

### Hydrogeologic Investigations

- ♦ Hollow Stem Auger Drilling
- ♦ Soil and Rock Sampling
- ♦ Monitoring Well Installation
- ♦ Wellhead Protection Planning
- ♦ Water Resources Assessment

### Environmental Permitting

- ♦ NPDES Permitting Support
- ♦ Wastewater Treatment
- ♦ Part B Permit Application

## Property Assessments

- ♦ Phase I Environmental Assessments
- ♦ Phase II Environmental Assessments
- ♦ Asbestos Hazard Evaluation
- ♦ Asbestos Abatement Monitoring

## Environmental Restoration

### Design, Procure, Install and Operation

- ♦ Soil Vapor Extraction Systems
- ♦ Bio Venting
- ♦ Landfarm
- ♦ Beneficial Reuse Projects
- ♦ Free Product Recovery
- ♦ Activated Carbon Filtration
- ♦ Air Stripping
- ♦ Groundwater Sparging
- ♦ Bioremediation



UST Site Assessment, Riverview Local School



In Ohio, CTL was the first to employ a patented gaseous nutrient injection technology, *PHOSTER™*, to remediate soil/groundwater contaminated with gasoline and diesel in accordance with *BUSTR* action levels.



# Materials Testing

CTL Engineering is a leader in providing analytical services to the construction industry. We maintain a staff of experienced personnel and accurate equipment to guarantee dependable results. We evaluate all types of construction materials. Additionally, CTL can prepare and test Portland cement and bituminous concrete mixes for optimization studies to insure the proper mix design for specific jobs.

**We provide complete testing of the following:**

### Aggregates

- Component Analysis (sand, gravel, limestone)–Department of Transportation
- Filter Sand – Environmental Protection Agency (EPA)
- Railroad Ballast – American Railroad Engineering Association
- Rip-Rap – U.S. Soil Conservation Service

### Soils

- Classification
- Compaction Parameters
- Permeability Tests

### Concrete

- Mix Designs
- Mix Verification Tests to verify strength, air content, consistency and yield of concrete
- Compression Tests
- Flexural and Split Tensile Strength Tests
- Modulus of Elasticity
- Creep Testing



**CTL Engineering offers petrographic examination of construction materials.** These specialized microscopic evaluations allow us to closely evaluate concrete quality and determine the causes and extent of failures in concrete in addition to potential future performance.

In addition to the standard ASTM tests of strength, absorption, dimensions unit weights, etc. CTL Engineering provides several specialty tests on concrete block and brick including the fire rating test specified by the BOCA and efflorescence testing required by many architectural firms.

### Asphalts

- Mix Designs
- Nuclear Gauge Calibrations Extraction and Grading
- Core Testing for Density and Strength.

**You can be assured of complete quality testing for all your construction mixes.**

[www.ctleng.com](http://www.ctleng.com)



*Rapid Chloride Permeameter*

### Clay-brick, Pipe & Tile

CTL Engineering provides complete and thorough analysis of clay products. Some of the more common tests include:

- Compressive Strength
- Absorption
- Freeze-thaw
- Efflorescence
- Dimensional Analysis
- Acid resistance.

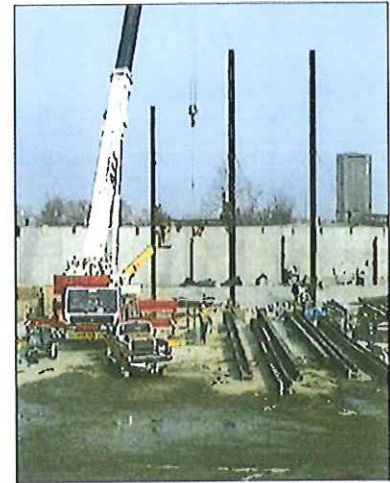
In addition to the standard tests that are required by specification, we perform specific tests on construction materials as dictated by the needs of the customer.



A project's construction phase requires quality control inspections and reliable testing. Building owners, architects, engineers and contractors choose CTL Engineering for field inspections because they know that we are accurate, dependable and perform our services in a timely manner. Our experienced engineers and inspectors are your partners in construction. We help provide a finished quality product.

**CTL Engineering provides inspections of the following:**

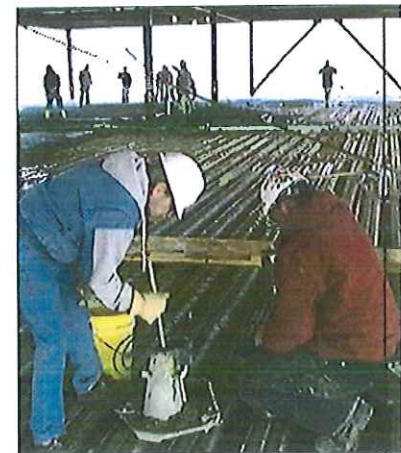
- ◆ **Earthwork including Embankment & Foundations**
- ◆ **Reinforced Concrete**
- ◆ **Floor Flatness**
- ◆ **Roofing Systems**
- ◆ **Structural Steel**
- ◆ **Masonry**
- ◆ **Sprayed-on Fire Proofing Installation**
- ◆ **Bituminous & Portland Cement Concrete Paving**
- ◆ **Single & Multi-Story Building Structures**
- ◆ **Pavement for Streets, Airports Runways, etc.**
- ◆ **Parking Garages & Bridges**
- ◆ **Water & Wastewater Treatment Facilities & Associated Piping Systems**



We perform quality control testing of the above materials and structures in addition to destructive and nondestructive testing of finished pavements and structures.

CTL Engineering examines existing structures to evaluate potential problems. Failed structures are analyzed to determine the cause and extent of damage. We evaluate structural integrity during initial construction and at regular intervals after completion. Our work includes steel reinforced concrete structures. CTL Engineering routinely evaluates metal and concrete pipes.

We perform audio/video surveys, sonic velocity testing, x-ray examinations, half-cell potential and other destructive and nondestructive tests.



CTL Engineering's technicians maintain the following certifications:

- ACI (American Concrete Institute)
- NICET Certification
- Hazardous Material Certification
- Confined Space Entry Training
- Radiation Safety Training
- Soil Technicians



**WEST VIRGINIA DEPARTMENT C ENVIRONMENTAL PROTECTION  
AML CONSULTANT CONFIDENTIAL QUALIFICATION QUESTIONNAIRE "Attachment B"**

PROJECT NAME  
East Lynn II

DATE (DAY, MONTH, YEAR)  
20/Mar/2012

FEIN  
55-063-1834

1. FIRM NAME  
CTL Engineering of West Virginia, Inc.

2. HOME OFFICE BUSINESS ADDRESS  
2860 Fisher Road  
Columbus, OH 43204

3. FORMER FIRM NAME  
Columbus Testing Laboratories

4. HOME OFFICE TELEPHONE  
(614) 276-8123

5. ESTABLISHED (YEAR)  
CTL-1927 CTL-WV 1983

6. TYPE OWNERSHIP  
Individual Corporation  
Partnership Joint-Venture

6a. WV REGISTERED DBE  
(Disadvantaged Business Enterprise)  
YES NO

6. PRIMARY AML DESIGN OFFICE: ADDRESS/ TELEPHONE/ PERSON IN CHARGE/ NO. AML DESIGN PERSONNEL EACH OFFICE  
733 Fairmont Road, Morgantown, WV 26501/ 304-292-1135/ Patrick E. Gallagher, President / Morgantown - 16

7. NAMES OF PRINCIPAL OFFICERS OR MEMBERS OF FIRM  
Patrick E. Gallagher, President  
CK Satyapriya, VP/Sec.

8a. NAME, TITLE, & TELEPHONE NUMBER - OTHER PRINCIPALS  
Ali Jamshidi, Treasurer (614) 276-8123

9. PERSONNEL BY DISCIPLINE
- 5 ADMINISTRATIVE
  - ARCHITECTS
  - 1 BIOLOGIST
  - 5 CADD DESIGNERS
  - CHEMICAL ENGINEERS
  - 5 CIVIL ENGINEERS
  - 11 CONSTRUCTION INSPECTORS
  - DESIGNERS
  - 0 DRAFTSMEN
  - ECOLOGISTS
  - ECONOMISTS
  - ELECTRICAL ENGINEERS
  - 4 ENVIRONMENTALISTS
  - ESTIMATORS
  - 2 GEOLOGISTS/GEO TECH ENG.
  - HISTORIANS
  - 1 HYDROLOGISTS
  - LANDSCAPE ARCHITECTS
  - MECHANICAL ENGINEERS
  - MINING ENGINEERS
  - PHOTOGRAMMETRISTS
  - PLANNERS: URBAN/REGIONAL
  - 1 SANITARY ENGINEERS
  - 2 SOILS ENGINEERS
  - SPECIFICATION WRITERS
  - 1 STRUCTURAL ENGINEERS
  - 4 SURVEYORS
  - TRAFFIC ENGINEERS
  - X OTHER,
  - 2 Geotechnical Drillers
  - 2 Driller Helpers
  - Metallurgical
  - Engineering Technicians
- TOTAL NUMBER OF WV REGISTERED PROFESSIONAL ENGINEERS IN PRIMARY OFFICE: 4
- \*RPEs other than Civil and Mining must provide supporting documentation that qualifies them to supervise and perform this type of work.
- 46 TOTAL PERSONNEL

The TOTAL PERSONNEL number is for CTL Engineering of West Virginia, Inc.

TOTAL PERSONNEL for CTL Engineering, Inc. is 180, which includes CTL Engineering of WV.

10. HAS THIS JOINT-VENTURE WORKED TOGETHER BEFORE?  YES  NO

11. OUTSIDE KEY CONSULTANTS/SUB-CONSULTANTS ANTICIPATED TO BE USED. Attach "AML Consultant Confidential Qualification Questionnaire" for each if copy is not on file with AML.

NAME AND ADDRESS:	SPECIALTY:	WORKED WITH BEFORE Yes _____ No _____
NAME AND ADDRESS:	SPECIALTY:	WORKED WITH BEFORE Yes _____ No _____
NAME AND ADDRESS:	SPECIALTY:	WORKED WITH BEFORE Yes _____ No _____
NAME AND ADDRESS:	SPECIALTY:	WORKED WITH BEFORE Yes _____ No _____
NAME AND ADDRESS:	SPECIALTY:	WORKED WITH BEFORE Yes _____ No _____
NAME AND ADDRESS:	SPECIALTY:	WORKED WITH BEFORE Yes _____ No _____
NAME AND ADDRESS:	SPECIALTY:	WORKED WITH BEFORE Yes _____ No _____
NAME AND ADDRESS:	SPECIALTY:	WORKED WITH BEFORE Yes _____ No _____
NAME AND ADDRESS:	SPECIALTY:	WORKED WITH BEFORE Yes _____ No _____

12. Is your firm experienced in Abandoned Mine Lands Remediation/Mine Reclamation Engineering?

**YES** Description and Number of Projects: CTL Engineering has completed more than 800 AML related projects nationally and internationally. See attached "AML Past Project Experience" for some specific examples.

NO

B. Is your firm experienced in Soil Analysis?

**YES** Description and Number of Projects: Our in-house laboratories perform all ASTM mechanical, organic and in-organic analyses for soils. Our labs are certified by WVDOH, OEPA and US Corps of Engineers.

NO

C. Is your firm experienced in hydrology and hydraulics?

**YES** Description and Number of Projects: Each of our site design and AML projects require hydrology & hydraulic evaluations. We estimate that annually, we complete more than 100 projects requiring hydrology design.

NO

D. Does your firm produce its own Aerial Photography and Develop Contour Mapping?

YES Description and Number of Projects:

**NO** However, we annually complete more than 50 projects requiring aerial photography & mapping. While we sub-contract the aerial photography, in-house we provide GPS, surveying and develop the contouring as needed.

E. Is your firm experienced in domestic waterline design? (Include any experience your firm has in evaluation of aquifer degradation as a result of mining.)

**YES** Description and Number of Projects: We have completed numerous waterline design projects and our in-house staff has more than 50 years of combined experience with aquifer degradation.

NO

F. Is your firm experienced in Acid Mine Drainage Evaluation and Abatement Design?

**YES** Description and Number of Projects: CTL has developed more than 20 active and passive treatment systems for AMD. More than 50 of our AML Design projects required some form of AMD evaluation and design.

NO

<p>13. PERSONAL HISTORY STATEMENT OF PRINCIPALS AND ASSOCIATES RESPONSIBLE FOR AML PROJECT DESIGN (Furnish complete data but keep to essentials)</p>	
<p>NAME &amp; TITLE (Last, First, Middle Int.)  <b>Gallagher, Patrick E.</b>  <b>President, Project Manager</b></p>	<p>YEARS OF AML DESIGN EXPERIENCE: 33</p> <p>YEARS OF AML RELATED DESIGN EXPERIENCE: 33</p> <p>YEARS OF DOMESTIC WATERLINE DESIGN EXPERIENCE: 26</p>
<p>Brief Explanation of Responsibilities  President of CTL Engineering of WV, Inc.; responsible for the overall administration of the Morgantown, WV office along with the management of the individual engineering projects. His administration and management responsibilities include marketing, proposal preparation, client contact, supervision of design personnel, scheduling, budget control, and report preparation. Projects successfully completed by Mr. Gallagher include: Geotechnical Investigations, Foundation Design Investigations, Dam Stability Analyses, Mine Subsidence Evaluations, Mineral Reserve Studies, Landslide Investigations, Mine Reclamation Designs, Failure Investigations, and Mining Permits.</p> <p>EDUCATION (Degree, Year, Specialization)  B.S., 1975, Civil Engineering  B.S., 1975, Equivalent, Geology</p>	
<p>MEMBERSHIP IN PROFESSIONAL ORGANIZATIONS  American Society of Civil Engineers  Society of Mining Engineers of A.I.M.E.  Triangle Fraternity of Engineers, Architects and Scientists  International Society of Soil Mechanics and Foundation Engineers  American Institute of Professional Geologists</p>	
<p>13. PERSONAL HISTORY STATEMENT OF PRINCIPALS AND ASSOCIATES RESPONSIBLE FOR AML PROJECT DESIGN (Furnish complete data but keep to essentials)</p>	
<p>NAME &amp; TITLE (Last, First, Middle Int.)  <b>Selfridge, Carl G.</b>  <b>Department Head, Geotechnical Services</b></p>	<p>YEARS OF AML DESIGN EXPERIENCE: 3</p> <p>YEARS OF AML RELATED DESIGN EXPERIENCE: 3</p> <p>YEARS OF DOMESTIC WATERLINE DESIGN EXPERIENCE:</p>
<p>Brief Explanation of Responsibilities  Department Head Geotechnical Engineering. Responsible for subsurface investigations, geotechnical reporting, foundation analysis &amp; recommendations, program development for investigative and laboratory analysis.</p> <p>EDUCATION (Degree, Year, Specialization)  <b>Graduate Studies, 1996-1999, Civil Engineering (Geotechnical)</b>  B.S., 1996, Civil Engineering, Geotechnical and Structural  A.S., 1994, Engineering Science  A.A.S., 1991, Mechanical Technology - Design &amp; Drafting</p> <p>MEMBERSHIP IN PROFESSIONAL ORGANIZATIONS  Fellow of the American Society of Civil Engineers, The GEO-Institute, The GEO-Institute, New York  Timber Framers Guild, Construction Institute (ASCE)</p>	
<p>REGISTRATION (Type, Year, State)  Engineering Intern (EI), 1996, New York  Level II Drilling Inspector, 1999, PennDOT</p>	

13. PERSONAL HISTORY STATEMENT OF PRINCIPALS AND ASSOCIATES RESPONSIBLE FOR AML PROJECT DESIGN (Furnish complete data but keep to essentials)

NAME & TITLE (Last, First, Middle Int.) <b>Darrah, Timothy A. Civil Site Dept. Mgr., Project Manager</b>	YEARS OF AML DESIGN EXPERIENCE: 20	YEARS OF AML RELATED DESIGN EXPERIENCE: 20	YEARS OF DOMESTIC WATERLINE DESIGN EXPERIENCE: 20
---	---------------------------------------	--	---

Brief Explanation of Responsibilities  
Mr. Darrah is presently responsible for Management and Design for various types of civil engineering projects including reclamation design, commercial and residential development projects. He is also responsible for scheduling, invoicing and client contacts for all surveying projects including topographic, property and construction layout. Mr. Darrah's duties include drafting, writing of property descriptions, hydrology calculations, quantity calculations and various other forms of surveying and civil engineering related duties. He is also proficient in computer software including AutoCAD, Civilsoft, HEC-1, HEC-RAS and various other engineering software.

EDUCATION (Degree, Year, Specialization)  
B.S., 1988, Civil Engineering Technology

MEMBERSHIP IN PROFESSIONAL ORGANIZATIONS  
REGISTRATION (Type, Year, State)

13. PERSONAL HISTORY STATEMENT OF PRINCIPALS AND ASSOCIATES RESPONSIBLE FOR AML PROJECT DESIGN (Furnish complete data but keep to essentials)

NAME & TITLE (Last, First, Middle Int.) <b>Moore, David Project Manager/Project Engineer</b>	YEARS OF AML DESIGN EXPERIENCE: 1	YEARS OF AML RELATED DESIGN EXPERIENCE: 1	YEARS OF DOMESTIC WATERLINE DESIGN EXPERIENCE: 25
---	--------------------------------------	---	---

Brief Explanation of Responsibilities  
Thirty years experience in design and construction. He has designed and constructed numerous dams, ponds, irrigation lakes, stormwater management ponds, sediment and erosion control ponds. He has designed ponds and lakes for residential, commercial, and industrial projects as well as golf courses combining water features, irrigation, stormwater management and water quality into aesthetically pleasing amenities.

EDUCATION (Degree, Year, Specialization)  
M.S., 1983, Civil Engineering Civil Design  
B.S., 1978, Civil Engineering

MEMBERSHIP IN PROFESSIONAL ORGANIZATIONS  
ASCE, AIA, Home Builders Assoc., SAME  
REGISTRATION (Type, Year, State)  
Registered Professional Engineer:  
1986, MD; 2008, NV; 2006, WY; 1984, CO; 2008, Alberta CAN; 2009, WV; 2010, OH; 2010, KY

13. PERSONAL HISTORY STATEMENT OF PRINCIPALS AND ASSOCIATES RESPONSIBLE FOR AML PROJECT DESIGN (Furnish complete data but keep to essentials)

NAME & TITLE (Last, First, Middle Int.) <b>Joseph Stanley Project/ Staff Engineer</b>		YEARS OF EXPERIENCE	
YEARS OF AML DESIGN EXPERIENCE: 6	YEARS OF AML RELATED DESIGN EXPERIENCE: 6	YEARS OF DOMESTIC WATERLINE DESIGN EXPERIENCE: 2	
Brief Explanation of Responsibilities			
Mr. Stanley is responsible for Reclamation Design, Drafting Hydrology, Quantity Calculations, Stability Analysis, Residential Development, Valley Fill Footprinting, Surveying, Subsidence Surveys, Pre-Blast Surveys, Acid Base Accounts, Groundwater Inventory. PC Software includes Hydrologic TR-20, TR-55, Excel, Harstad Methods, Word, AutoCAD Land, Quarttro, Access.			
EDUCATION (Degree, Year, Specialization)			
A.S., 2001 Civil -Engineering Technology Drafting & Design			
MEMBERSHIP IN PROFESSIONAL ORGANIZATIONS			
REGISTRATION (Type, Year, State)			

13. PERSONAL HISTORY STATEMENT OF PRINCIPALS AND ASSOCIATES RESPONSIBLE FOR AML PROJECT DESIGN (Furnish complete data but keep to essentials)

NAME & TITLE (Last, First, Middle Int.) <b>Gregory Foreman, P.E.</b>		YEARS OF EXPERIENCE	
YEARS OF AML DESIGN EXPERIENCE: 3	YEARS OF AML RELATED DESIGN EXPERIENCE: 17	YEARS OF DOMESTIC WATERLINE DESIGN EXPERIENCE: 17	
Brief Explanation of Responsibilities			
Mr. Foreman serves as Project Manager and Design Engineer for various civil site design projects including reclamation, water supply, sanitary design for public and private projects. Design services provided include site grading, potable water, sanitary sewer, storm sewer, pedestrian walkways, vehicular thoroughfares, preparation of permits, project specifications, plans and engineering calculations.			
EDUCATION (Degree, Year, Specialization)			
A.S, Fairmont State, 1989, Drafting & Design			
A.S., Fairmont State, 1989, Mechanical			
B.S., Fairmont, 1989, Civil Engineering Technology			
MEMBERSHIP IN PROFESSIONAL ORGANIZATIONS			
REGISTRATION (Type, Year, State) Registered Professional Engineer, 1999, WV (no. 014165)			

13. PERSONAL HISTORY STATEMENT OF PRINCIPALS AND ASSOCIATES RESPONSIBLE FOR AML PROJECT DESIGN (Furnish complete data but keep to essentials)

NAME & TITLE (Last, First, Middle Int.)  
**Charles Waltz, P.E.**

YEARS OF EXPERIENCE

YEARS OF AML DESIGN EXPERIENCE:  
**8**

YEARS OF AML RELATED DESIGN EXPERIENCE:  
**12**

YEARS OF DOMESTIC WATERLINE DESIGN EXPERIENCE:  
**0**

Brief Explanation of Responsibilities  
 Project Engineer / Staff Engineer providing engineering services for a variety of projects including, site development, geotechnical subsurface investigations and foundation recommendations and road construction.

EDUCATION (Degree, Year, Specialization)

B.A., Fairmont State, Business Administration  
 B.S., Fairmont State, Civil Engineering  
 Graduate Studies, West Virginia University, Geotechnical Engineering

MEMBERSHIP IN PROFESSIONAL ORGANIZATIONS

REGISTRATION (Type, Year, State)  
 Registered Professional Engineer, WV (no.17626), VA  
 (no. 37038)

14. PROVIDE A LIST OF SOFTWARE AND EQUIPMENT AVAILABLE IN THE PRIMARY OFFICE WHICH WILL BE USED TO COMPLETE AML DESIGN SERVICES.

OFFICE EQUIPMENT

- 3 HP Color Plotters
- HP Color Scanner
- Duplicating equipment, copiers, blueprinting, laser printers, etc.
- Facsimile Machine
- VCR/Video Recording Equipment

DESIGN SOFTWARE

Windows XP & 2000 based operating systems

Microsoft Office 2000 & 2002 is used for word processing, spreadsheet creation, data processing, and presentation creation. Alternative software including Corel Suite is available, if necessary. Project designs and specifications are produced in our Computer Aided Drafting and Design (CADD) section using all versions of AutoCAD including Release 2007.

Hydrogeologic Studies

- MODFLO
- MODPATH
- SURFER
- CAPZONE
- GWPATH
- SKUGIS
- PHREEQCI
- WATEQ4F

Groundwater for Windows

Civil Engineering Software

- Civil 3D 2012
- Autodesk Land Desktop 2006/07
- Profiling
- Civilsoft
- TR-20 & TR-55
- SEDCAD
- HEC 1 & 2
- Survey 3.0
- HEC-RAS
- Arc GIS
- ArcPAD

Geotechnical

- GINT
- STABL6
- SHAFT
- WSPRO
- Various Bridge, Pavement, Pile and Foundation Software



SURVEY EQUIPMENT

- Lica 500 Global Positioning System (GPS)
- 6 Total Stations
- NAK Micrometer Level System & Direct Levels
- 4X4 Vehicles
- 2-Way Radios

SUBSURFACE INVESTIGATION EQUIPMENT

- 3 - CME 75 Drilling Rigs, 4-Wheel Drive Truck Mounted
- 2 - CME 75 HD Drilling Rigs, 2-Wheel Drive Truck Mounted
- 1 - CME 55 HD Drilling Rig, All-Terrain Mounted
- 1 - CME 45 Drill Rig, 2-Wheel Drive Truck Mounted
- 1 - CME 45 Drill Rig, 2-Wheel Drive Skid Mounted
- 1 Simco 4000 Track Rig
- 4-Wheel Drive Support Vehicles
- Portable barges for water borne drilling (including supply boats w/outboard motors)
- In-situ permeability apparatus
- Single or double ring field infiltrometers for hydraulic conductivity testing
- Down hole temperature gauges
- Color Borehole Camera with 300 foot range
- Ground Penetrating Radar Undisturbed Shelby tube sampling devices
- Standard penetration testing equipment (1", 2", 3" split spoons)
- Settlement probes
- Tripod portable drilling equipment for interior drilling with 7 feet of clearance
- CBR equipment
- Hand Augers
- Solid flight augers - 4" O.D.
- Hollow stem augers - 33", 43", 63" 83" I.D.
- Rotary drilling capability up to 12" O.D.
- Hydro Punch - In-situ groundwater monitoring
- Conventional and wireline coring capabilities - (1", 2", 3", & 4")
- Soil-gas survey equipment
- Pump testing equipment
- Decontamination Equipment - Steam cleaners, drums, generators, etc.
- Electronic Data Loggers
- Field Sampling equipment for soil, water and groundwater
- Nuclear Densometer - Soil Compaction
- PID, FID, CGI and various field monitoring equipment
- Groundwater and Soil Remediation Equipment
- Mobile activated carbon system
- Air and chemical stripping of soils and water

15. CURRENT ACTIVITIES ON WHICH YOUR FIRM IS THE DESIGNATED ENGINEER OF RECORD

PROJECT NAME, TYPE AND LOCATION	NAME AND ADDRESS OF OWNER	NATURE OF YOUR FIRM'S RESPONSIBILITY	ESTIMATED CONSTRUCTION COST	PERCENT COMPLETE
Oakland PSD, AML Project, Hancock County, WV	WVDEP- AML 601 57th Street SE Charleston, WV 25304	Water system investigation		100% report
St. Clair Portals, AML Project, Monongalia County, WV	WVDEP- AML 601 57th Street SE Charleston, WV 25304	Draining mine portal remediation design, mine seals, drainage systems, grading design, specifications	\$ 1,300,000	Design 100% Construction 80%
Shinn's Run Portals & AMD, AML Project, Harrison County, WV	WVDEP- AML 601 57th Street SE Charleston, WV 25304	Draining mine portal remediation design, mine seals, drainage systems, grading design, grouting design, specifications		Design 75%
Pee Wee Hill Water Supply, MD AML Project, Garrett County, MD	MD Department of Environment 160 S. Water St. Frostburg, MD 21532	Water System Investigation, Design system for 22 residences, water tank, pump system	\$1,500,000	Design 100%, Construction 40%
Ream Refuse, AML Project, McDowell County, WV	WVDEP- AML 601 57th Street SE Charleston, WV 25304	Refuse regarding, remediation design, mine seals, drainage systems, grading design, specifications		Design 60%
Open Contract to provide engineering design services throughout the State of Ohio (2 year contract)	OH Department of Natural Resources AML Emergency Program 1855 Fountain Square Court, 2nd Floor Columbus, Ohio 43224	Reclamation Design, geotechnical drilling, mine subsidence, slope stability analysis and design, pressure grout stabilization design, risk assessment, acid mine drainage, burning refuse extinguishment and earthwork calculations	\$75,000 /year Fees	N/A

<p>Open Contract to provide engineering design services throughout the State of Maryland. (5 year contract)</p>	<p>MD Department of Environment 160 S. Water St. Frostburg, MD 21532</p>	<p>Reclamation Design, geotechnical drilling, mine subsidence, slope stability analysis and design, pressure grout stabilization design, risk assessment, acid mine drainage, burning refuse extinguishment and earthwork calculations</p>	<p>\$100,000 Fees \$1,000,000+ Const.</p>	<p>20%</p>
<p>TOTAL NUMBER OF PROJECTS: 8</p>		<p>TOTAL ESTIMATED CONSTRUCTION COSTS: \$5,000,000</p>		
<hr/>				

16. CURRENT ACTIVITIES ON WHICH YOUR FIRM IS SERVING AS A SUB-CONSULTANT TO OTHERS

PROJECT NAME, TYPE AND LOCATION	NATURE OF FIRMS RESPONSIBILITY	NAME AND ADDRESS OF OWNER	ESTIMATED COMPLETION DATE	ESTIMATED CONSTRUCTION COST	
				ENTIRE PROJECT	YOUR FIRMS RESPONSIBILITY
Harrison Power Station Flyash, Disposal Area, Construction Monitoring, Shinnston, WV	Surveying, Construction Observation and Testing, Flyash Disposal	APS P.O. Box 600 Haywood, WV 26366	On-going	\$ 5,000,000.00	\$100,000.00
National Engineering, various projects	Subsurface investigations and Geotechnical Drilling for various projects	WVDOH 1900 Kanawha Boulevard Charleston, WV 25305	On-going	\$ 20,000,000.00	\$150,000.00 /year
Hazelton Prison #4, Hazelton, WV	Subsurface investigations and Geotechnical Drilling, Construction Observation	US Federal Bureau of Prisons	2012	\$12,000,000	\$300,000
Nelsonville, ODOT, Nelsonville, OH	Subsurface investigations and Geotechnical Drilling, Construction Observation	Ohio Department of Transportation, District 10 338 Muskingum Drive Marietta, OH 45750	2012	\$100,000,000	\$2,000,000

17. COMPLETED WORK WITHIN LAST 5 YEARS ON WHICH YOUR FIRM WAS THE DESIGNATED ENGINEER OF RECORD

PROJECT NAME, TYPE AND LOCATION	NAME AND ADDRESS OF OWNER	ESTIMATED CONSTRUCTION COST	YEAR	CONSTRUCTED (YES OR NO)
Peninsula Highwalls, AML Project, Monongalia County, WV	WVDEP- AML 601 57 <sup>th</sup> Street SE Charleston, WV 25304	\$244,000	2009	YES
Aarons Run Treatment, AML Project, Allegany County, MD	MDE, MBOM	\$800,000	2009	YES
Eccles Subsidence, AML Project, Raleigh County, WV	WVDEP- AML 601 57 <sup>th</sup> Street SE Charleston, WV 25304			
Cheat Neck Landslide, AML Project, Monongalia County, WV	WVDEP- AML 601 57 <sup>th</sup> Street SE Charleston, WV 25304	\$179,000	2009	YES

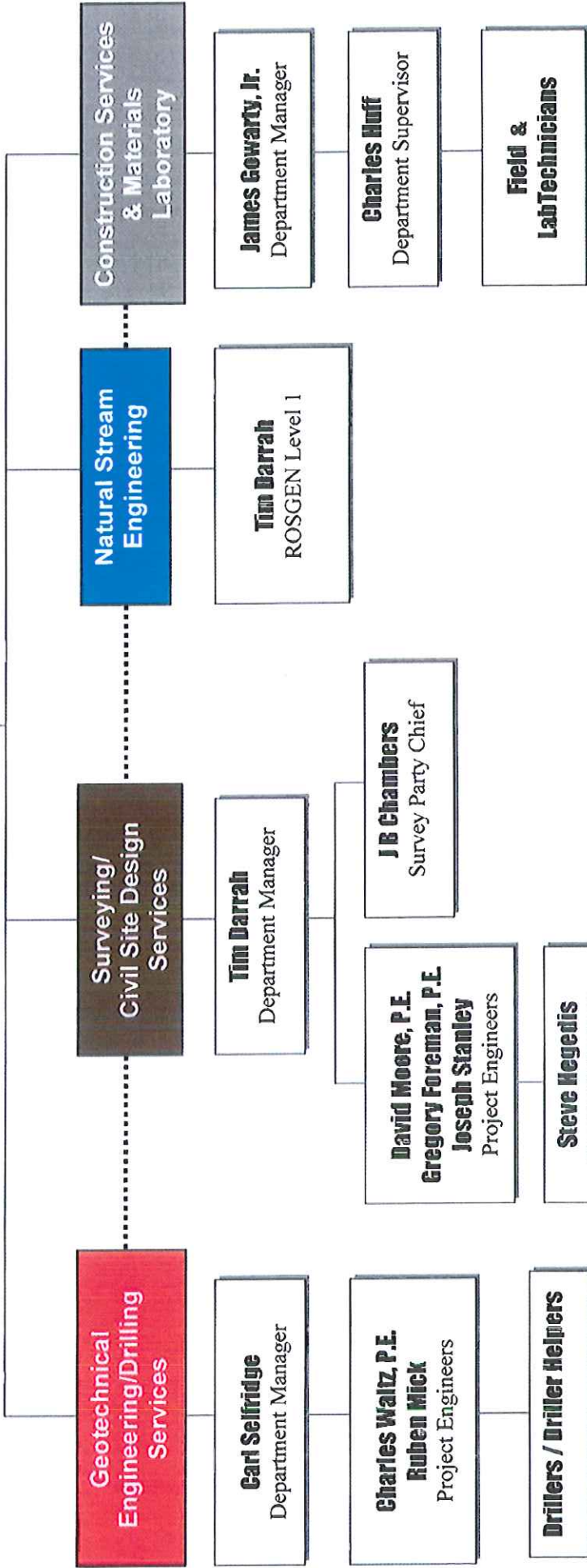
18. COMPLETED WORK WITHIN LAST 5 YEARS ON WHICH YOUR FIRM HAS BEEN A SUB-CONSULTANT TO OTHER FIRMS (INDICATE PROJECT FOR WHICH YOUR FIRM WAS RESPONSIBLE)

PROJECT NAME, TYPE AND LOCATION	NAME AND ADDRESS OF OWNER	ESTIMATED CONSTRUCTION COST OF YOUR FIRM'S PORTION	YEAR	CONSTRUCTED (YES OR NO)	FIRM ASSOCIATED WITH
WV Blue Cross / Blue Shield Headquarters Parkersburg, WV	Civil Site Design, utilities, storm water, foundation, grading, coordination	Oxford Development Pittsburgh, PA	2008	\$8,000,000	\$100,000
<p>19. Use this space to provide any additional information or description of resources supporting your firm's qualifications to perform work for the West Virginia Abandoned Mine Lands Program. For the past 25 years, CTL has successfully designed more than 200 AML projects. We have worked nationally and internationally on a variety of AML problem sites. We have developed unique solutions that have been applied to site development, AMD Treatment, Mine Subsidence Abatement, Mine Fires and Highwall Elimination. Routinely, CTL is involved with highwall and refuse pile stabilization and extinguishment.</p> <p>20. The foregoing is a statement of facts.</p>					
Signature: _____ Printed Name: <u>Patrick E. Gallagher, P.E.</u>		Title: <u>President</u>		Date: <u>March 20, 2012</u>	

NOTE: THIS DOCUMENT WILL BECOME VOID AFTER DECEMBER 31 IN CALENDAR YEAR OF DATE HEREON.

**CTL Engineering of West Virginia, Inc.**  
**PROJECT ORGANIZATION CHART**  
**& KEY PERSONNEL**

**Patrick Gallagher, P.E.**  
**CPGS, WV PS**  
 President, Project Executive



***Expertise:***

Mr. Gallagher serves as President of CTL Engineering of West Virginia, Inc. Projects successfully completed under Mr. Gallagher's direction include: Civil Site Design, Foundation Design, Storm Water Management, Waste Water Design, Roadway design, Parking Lot Design, Geotechnical Investigations & Design, Site Stability Analyses, Mine Subsidence Evaluations, Failure Investigations and Environmental Investigations and Permitting.

Prior to joining CTL Engineering, Mr. Gallagher was the chief of the Abandoned Mine Reclamation Program for the State of Maryland, Department of Natural Resources, and Bureau of Mines. In addition, he was also responsible for overall engineering/geologic support to the Maryland Bureau of Mines Program.

***Education:***

B.S., Civil Engineering

Virginia Polytechnic Institute and State University, Blacksburg, Virginia, 1975

B.S., Geology

Virginia Polytechnic Institute and State University, Blacksburg, Virginia, 1975

***Professional Registration / Certifications:***

Registered Professional Engineer

Ohio, # 48459; Maryland, # 13256; West Virginia, # 9297; Pennsylvania, # PE-044930-R; Wyoming, # 11033; North Carolina, # 0 32503; Kentucky, # 24988

Certified Professional Geological Scientist, # 6575

Professional Surveyor, WV

Adjunct Professor – Civil Engineering – Fairmont State College 2001 – 2002

***Career Experience:***

CTL Engineering, Inc.- 29 years

Other – 6 years

***Project Experience:***

***Mining Related***

***Abandoned Mine Lands and Reclamation Projects***

Project manager overseeing the design of various abandoned mine lands and reclamation projects for the West Virginia Department of Environmental Protection. These projects include coal refuse pile stabilization, burning refuse extinguishment and stabilization, acid mine drainage abatement plans, storm water management plans, mine permits, slope stability analysis and hydraulic analysis.



***American Bituminous Power Partners, LLP***

Project manager for services involving permitting and environmental issues. Conducted on-going inspections and certifications of the impounding refuse facilities and all drainage/sediment control structures for all permitted facilities.

***Ohio Valley Plaza, St. Clairsville, Ohio***

Project manager for the engineering design services for the dynamic compactions of surface mine spoil for this project. This site was in need of major overhaul; no building could take place without the deep dynamic compaction activities, which made this site fit for construction, while reducing site development costs.

***Newpointe Center, Clarksburg, West Virginia***

Project Manager for geotechnical engineering, materials testing, and observation services and surveying services for this project. CTL is currently performing materials testing and observation for Phase II of this development.

***Ohio Department of Natural Resources (ODNR)***

Project manager overseeing mine subsidence investigations throughout the state of Ohio. These projects include hydrology/hydraulic evaluations, floodplain designs, wetland delineations, slope stability designs, surface and deep mine permitting, refuse pile analysis/certification, earthwork calculations, storm water management design, pressure grout abatement, and numerous emergency projects under the ODNR-AML Emergency Program.

***Amigo Coal Refuse Facility, Amigo, West Virginia***

Project Manager responsible for designing two 42 inch microtunnels beneath an existing and active railroad line. The twin 42 inch culverts were for the diversion of Amigo Creek beneath the railroad. The twin culvert system was approximately 750 lf in total length and required 2 weeks to complete.

***Highway / Landslide / Slope Stability***

***PENNDOT, Open-End Contract, Pennsylvania***

Project Manager/Engineer responsible for overseeing geotechnical investigations for 30 separate transportation projects.

***Star City Bridge, Star City, WV***

Project Manager/Engineer for geotechnical investigations, borings and road relocation during construction of the Star City Bridge.

***WVDOH Open-End Contract***

Project Manager/Engineer providing geotechnical support to 40 separate projects including new roads and landslides.

***Allegheny Restorations, West Virginia***

Provided geotechnical engineering, surveying services and shoring design, in coordination with the West Virginia Department of Transportation, for 3 covered bridge projects in West Virginia.

***Foundations / Structure***

***WVU Wise Library***

Project Manager/Engineer provided geotechnical oversight of investigations for the building foundation systems on the construction of a new six (6) story library, which included the design of an extensive tie-back/soldier pile wall system.

***WVU Eye Institute***

Project Manager/Engineer providing geotechnical oversight for the geotechnical investigations and foundation recommendations performed for this \$5 M dollar patient care facility.

***Physicians Office Center, WVU Hospital***

Project Engineer responsible for the oversight of the geotechnical drilling and site investigations for this project.

***WVU Life Sciences Building***

Project Manager/Engineer providing geotechnical oversight of the drilling and investigations and recommendations needed for the construction of the Life Sciences Building.

***Civil Site Geotechnical Design***

***Suncrest Executive Plaza***

Under Phase 1 of this five-story office complex project, CTL provided the following services: surveying, geotechnical and civil site design. The civil site design included sedimentation and erosion control plans and permits, storm water management design utilizing 1,600 feet of 48" GCMP for storage, grading plans, utility coordination and WV DOH entrance permits for turning lane access to the site. CTL also provided construction drawings for the project.

***WVU Hospitals, Morgantown, WV***

CTL provided geotechnical, surveying and civil site design support services in conjunction with WVDOH and WVU for a new access road and parking area design for surrounding hospital area.

***Chaplin Hill Business Park, Morgantown, West Virginia***

Responsible for site conceptual design, hydrology, stormwater management, grant preparation, supervision during bidding phase, construction management, and final grant approval.

***Blanchette Rockefeller Neuroscience Building, WVUHospitals, Morgantown, WV***

Project included Site Plan, Site Grading, Utility Coordination, Sedimentation & Erosion Control, Bid Documents & Pre-Bid Conference. Design required close tie to existing facilities and utilities. Coordination between WVU Hospitals and architect to meet site needs and limit day to day disruptions from construction and traffic.

***Glenmark Center, Shopping Plaza, Morgantown, West Virginia***

CTL provided geotechnical engineering, Phase 1 environmental assessment, civil site design, "site specific" storm water management, surveying, sanitary treatment facilities for this ten plus acre plaza.

***E A Development, The District, Student Housing, Morgantown, WV***

This is a 30 acre development including 20 apartment buildings, clubhouse. CTL provided geotechnical investigations, conceptual and final plans, road layout, bridge location, DOH permit and design for access, grading plans, retaining wall design, storm water systems and detention. CTL was responsible for permitting, including: Sediment & Erosion Control, DOH Highway Access, Stream Crossing Permit, Right of Access and License Agreement for temporary and permanent culverts and stream crossing, 100 year Flood Study for Monongalia County Development Permit, 401 Water Quality Certification and the Section 404 Permit.

***Summersville Fresh Water Intake, Summersville, West Virginia***

Responsible for site review and rock mechanics evaluation for North American drillers where approximately 500 lf of a 48 inch micro tunnel was constructed for the intake at the City of Summersville WV water treatment facility adjacent to Summersville Lake. The tunnel was installed through excessively hard, 25,000 psi, crystallized sandstone requiring specialized bits and techniques to overcome the difficult horizontal boring.

***Construction Observation & Testing***

***Allegheny Power Systems (open-ended contract for transmission distribution and power station projects)***

CTL performs construction testing and observation, material testing, structural steel and surveying for various projects under this contract.

***Fayette Energy Facility, Masontown, PA***

Project Manager responsible for overseeing the concrete, soils, aggregates, asphalt and bolted connections for the project site. CTL has provided specialty-testing including: soil resistivity testing, and Windsor Pin testing

***Cheat Lake Waste Water Treatment Plant Expansion, Morgantown, WV***

Project Manager responsible for providing oversight and recommendations for this project. The project included increasing the capacity from 250,000 gallons/day to 750,000 gallons/day.

***Chaplin Hill Sewer and Water System Expansion, Morgantown, WV***

Project Manager responsible for overseeing quality assurance for corrosion protection, utility trenching, line expansion and construction methods for this project.

***Warrior Run Generation Plant, Cumberland, MD***

Project manager for the construction observation and structural steel inspection services for this project.



**PATRICK E. GALLAGHER, P.E., C.P.G.S.**

*President*

***Professional Affiliations:***

American Society of Civil Engineers

Society of Mining Engineers, of A.I.M.E.

Triangle Fraternity of Engineers, Architects, and Scientists

International Society for Soil Mechanics and Foundation Engineers

American Institute of Professional Geologists



# TIMOTHY A. DARRAH

*Civil Site and Survey  
Department Manager*

## ***Expertise:***

Mr. Darrah is presently responsible for department management for civil site design and surveying projects including topographic, property and construction layout. Mr. Darrah also serves as project engineer on various types of civil engineering projects including residential and commercial developments, and reclamation design projects. Office work includes site designs, hydrology calculations, quantity calculations, and various other forms of engineering related duties.

## ***Education:***

B.S. Civil Engineering Technology  
Fairmont State College, Fairmont, West Virginia, 1988

## ***Certifications:***

West Virginia Dept. of Highways Compaction Technician  
West Virginia Department of Highways Concrete Technician

## ***Career Experience:***

CTL Engineering, Inc.: 20 years

## ***Project Experience:***

### ***Reclamation***

#### ***West Virginia Department of Environmental Protection, Division of Abandoned Mined Lands and Reclamation***

Performed the survey and design manager on abandoned mined lands on numerous projects for this state agency including: Peninsula Highwalls, St. Clair Portals, Cheat Neck Landslide, Lost Creek Landslide, all within the past five years.

### ***Civil Site Design***

#### ***Adelphia Cable Company, Various Locales***

Project manager responsible for WVDOH and Railroad Crossings permits.

#### ***West Virginia University Hospital, Morgantown, West Virginia***

Project manager responsible for the design and permitting of a 500 foot turning lane in conjunction with the WVDOH.

### ***Surveying***

#### ***Lock & Dam Rehabilitation Project in Point Marion, Pennsylvania***

Responsible for all Second Order, Class I Surveying for this \$45 million Corps of Engineers project.



## TIMOTHY A. DARRAH

### *Civil Site and Survey Department Manager*

#### ***ODNR Reclamation and Emergency Programs***

Survey control and layout for 5 ODNR Reclamation Projects and 5 ODNR Emergency Projects.

#### ***Harrison Power Station for a \$900 Million SO<sub>2</sub> Removal Project in Shinnston, WV***

Survey crew chief responsible for construction stakeout and surveying.

#### ***Monongalia County Board of Education***

Project surveyor responsible for various surveying services for new school development and additions to existing schools.

#### ***Guardian Food Corporation, Various Locales, WV, PA, OH***

Project manager that provided ALTA surveys for 34 Hardees Restaurants throughout Ohio, Pennsylvania and West Virginia.

#### ***Ohio Department of Transportation***

Survey chief responsible for construction stake out of nearly nine miles of proposed road for Route 250 from Cadiz, OH to New Athens, OH. Stake out preliminary centerline and proposed bore hole locations.

#### ***Green River Group, Hazelton, WV***

Survey chief responsible for construction stake out for Hazelton Road in Preston County, WV. Staked out centerline and cuts and fills.

#### ***American Fiber Resources, Fairmont, WV***

Survey chief responsible for construction stake out of paper recycling plant, including columns, buildings, wall lines, column plumbness, roads, clarifiers, etc.

#### ***Cell Towers, Various Locales***

Responsible for surveying lease areas, topographic mapping, road layout and developing plats and descriptions for proposed cell tower sites.

#### ***Aerial Photography, Various Locales***

Project manager in charge of establishing GPS control for the aerial mapping of numerous projects throughout West Virginia.

### ***Site Development / Residential & Commercial***

#### ***Chaplin Hill Business Park, Morgantown, West Virginia***

Project Manager responsible for conceptual layout and initial site design for the Monongalia County Economic Development Authority.

#### ***EA Morgantown, LLC, Morgantown, West Virginia***

Project manager responsible for the civil site design of a 900 bedroom student housing complex. Submitted permits to the WVDOH for a turning lane and entrances. Prepared sediment and erosion permits for the WVDEP. Also, prepared stream crossing permits and performed a 100 year Flood Study.



## TIMOTHY A. DARRAH

*Civil Site and Survey  
Department Manager*

### *Glenmark Centre, Morgantown, West Virginia*

Project manager responsible for civil site design and ALTA surveys at this facility for the following Glenmark businesses including: Lowes Home Improvement Warehouse, Outback Steakhouse, Wendy's, Bob Evans, Holiday Inn Express, and Ruby Tuesday's.

### *Sterling Ridge Student Apartments, Morgantown, West Virginia*

Project Manager for the civil site design for this student-housing complex. CTL also provided surveying design and inspection services.

### *Suncrest Executive Plaza, Morgantown, West Virginia*

Project manager responsible for the civil site design of this project. Duties included the preparation of storm water detention plans, grading, pavement, turning lane and permits for the WVDOH, and sediment and erosion permits.

### *Water / Waste Water*

#### *WVDEP Water Feasibility Investigations:*

Project Manager for numerous water feasibility studies over his career at CTL including: Fairview, Tioga / Craigs ville, Douglas and Horner's Run in the past five years.

# CARL G. SELFRIDGE

*Geotechnical Engineer*

## **EXPERTISE:**

Annually manages 100+ various geotechnical projects; including transportation, commercial development, public schools, and a variety of public and private clients. Directs all aspects of the geotechnical engineering for CTL WV. This includes the management of field drilling activities, field classification of soil, rock, field and laboratory safety procedures, the assignment of a laboratory testing program, and performing geotechnical evaluations. Engineering evaluations include foundation recommendations, settlement analysis, slope stability analysis, earth pressure coefficients and report preparation.

## **EDUCATION:**

A.A.S., Mechanical Technology - Design & Drafting, 1991  
Adirondack Community College; Queensbury, NY

A.S., Engineering Science, 1994  
Adirondack Community College; Queensbury, NY

B.S., Civil Engineering (Geotechnical & Structural), 1996  
Rensselaer Polytechnic Institute; Troy, NY

Graduate Studies, Civil Engineering (Geotechnical), 1996-1999  
Rensselaer Polytechnic Institute; Troy, NY

## **REGISTRATIONS / CERTIFICATIONS:**

Engineer Intern (EI): New York, 1996  
Pennsylvania Dept of Transportation Level II Drilling Inspector, 1999  
ARC Adult CPR Trained, Expires: 08/30/2006  
ARC First Aid Trained, Expires: 08/30/2008  
CSX Transportation Contractor Safety Trained, Expired: 2004  
Mine Safety Trained (Construction), Expired: 2003  
AMTRAK Contractor Safety Trained, Expired: 2001

## **CAREER EXPERIENCE:**

CTL Experience – 3 years  
Other Engineering – 8 years

## **Project Experience:**

**US Route 35 Little Fivemile Creek to Coast Guard Station, Mason County, WV, R. D. Zande / West Virginia Department of Transportation, Division of Highways.** Geotechnical Engineer responsible for the site reconnaissance, core boring program bid documents, geotechnical site investigation program, laboratory testing program.

**Dolls Run Bridge Replacement, Monongalia County, WV, West Virginia Department of Transportation, Division of Highways.** Geotechnical Engineer responsible for the site reconnaissance, geotechnical site investigation program, core boring bid documents, laboratory testing program, geotechnical analysis and prepared recommendations, prepared Geotechnical Engineering Report.





## CARL G. SELFRIDGE

## *Geotechnical Engineer*

**King's Covered Bridge Rehabilitation, Somerset County, PA, Simone Jaffe Collins (SJC) / Pennsylvania Department of Transportation, District 9-0.** Engineer responsible for the inspection and documentation of the current conditions and details of historic wood timber covered bridge.

**WV 705 Connector Alternative Study, Monongalia County, WV, West Virginia Department of Transportation, Division of Highways.** Geotechnical Engineer responsible for performing site reconnaissance of the project area and evaluated the existing site conditions as they may pertain to the design of different proposed alternatives.

**King Coal Highway (US Route 52) with WV Route 65 Relocation, Mingo County, WV, Nicewonder Contracting, Inc. / West Virginia Department of Transportation, Division of Highways.** Geotechnical Engineer responsible for geologic reconnaissance, geotechnical site investigation program, site mining issues, cut slope analysis and design, very large embankment fills analysis and design, and other geotechnical design and analysis.

**S.R. 0040, Section 06M, Youghioghney Bridge Replacement over the Youghioghney Reservoir, Fayette and Somerset Counties, PA, WAGMAN, Inc. / Pennsylvania Department of Transportation, District 12-0.** Geotechnical Engineer responsible for conducting on-site geotechnical investigation and analyses of subsurface information for a proposed alternate replacement bridge structure over the Youghioghney Reservoir.

**S.R. 885, Section A03, Boulevard of the Allies Bridge Replacement over Forbes Avenue, Pittsburgh, PA, Pennsylvania Department of Transportation, District 11-0.** Geotechnical Engineer responsible for conducting on-site geotechnical investigation and performed analyses of the subsurface investigation information for use in the design and analysis of two replacement bridge structures, new roadways and six retaining walls.

**Osage Mine Complex Reclamation, Monongalia County, WV, West Virginia Department of Environmental Protection.** Geotechnical Engineer responsible for assisting with preliminary field and office site reconnaissance for the preparation of construction plans and specifications for the reclamation of five abandoned mining sites under the Abandoned Mine Lands and Reclamation Program.

**Lick Run Bridge (LC09), and Scotia Hollow Bridge (XC01), Allegheny County, PA, County of Allegheny.** Geotechnical Engineer responsible for assisting with the preparation of the Problem Statement and Draft Exploration Plan for preliminary and final design activities for the rehabilitation or replacement of the two bridges in the Allegheny County Bridge Design Group B.

**Martins Ferry Water System Improvement Project, Belmont County, OH, City of Martins Ferry.** Geotechnical Engineer responsible for the geotechnical site investigation, subsurface investigation program, mine subsidence investigation, cut-and-fill slope stability review and analysis, embankment settlement analysis, and geotechnical design and analysis

**Thompson Run Road Bridge No. 2, Allegheny County, PA, Allegheny County.** Geotechnical Engineer responsible for conducting the inspection of the subsurface investigation program.

**S.R. 0028, Galleria Mall Interchange, Allegheny County, PA, Mills Corporation.** Geotechnical Engineer responsible for conducting on-site inspection and analyses of a subsurface investigation for a new interchange on S.R. 0028.

**Ambridge-Aliquippa Bridge Replacement, Beaver County, PA, Pennsylvania Department of Transportation, District 11-0.** Geotechnical Engineer responsible for performing site reconnaissance and



## CARL G. SELFRIDGE

## *Geotechnical Engineer*

assessments of five alternative locations for a proposed new bridge to replace the existing Ambridge-Aliquippa Bridge that connects State Routes 65 and 51 over the Ohio River.

**Midway Sewerage Treatment Plant, Washington County, PA, Midway Sewerage Authority.** Geotechnical Engineer responsible for drilling inspection, subsurface analyses, and foundation analyses for the design and construction of a proposed sewerage treatment plant at an alternate site.

**King Coal Highway, Mingo County, WV, West Virginia Department of Transportation, Division of Highways.** Geotechnical Engineer responsible for geotechnical site investigation, boring layout, drilling program, mine subsidence investigation, cut-and-fill slope stability review and analysis, embankment settlement analysis, and geotechnical design and analysis.

**Sharon Heights Connector, Mingo County, WV, West Virginia Department of Transportation, Division of Highways.** Geotechnical Engineer responsible for geotechnical site investigation, boring layout, drilling program, mine subsidence investigation, slope stability.

**Southern Beltway, Findlay Connector, PA Route 60 to U.S. Route 22, Allegheny and Washington Counties, PA, Pennsylvania Turnpike Commission.** Geotechnical Engineer responsible for reviewing boring logs and profiles, along with the proposed designed alignment geotechnical cross sections, plan views, and profiles for correctness and completeness.

**Stage II Light Rail Transit System, Pittsburgh, PA, Port Authority of Allegheny County.** Geotechnical Quality Control Inspector on the Construction Management Team assisting in monitoring geotechnical field activities of tieback anchor installations and load testing in soldier pile and lagging walls.

**Source Water Assessment and Protection (SWAP) Program, Beckley District, WV, West Virginia Department of Health & Human Resources, Bureau for Public Health.** Engineer responsible for performing wellhead delineation and assisting in preparing reports for 44 public water systems.

**S.R. 2040, Curry Hollow Road Realignment, Allegheny County, PA, Pennsylvania Department of Transportation, District 11-0.** Geotechnical Engineer responsible for conducting on-site inspection and analyses of the subsurface investigation for the proposed widening and realignment of approximately one mile of a four-lane roadway, including the replacement of a deteriorated bridge.

**S.R. 3016, Section B02, Green Garden Road Bridge Replacement and Green Garden Road Realignment, Beaver County, PA, Pennsylvania Department of Transportation, District 11-0.** Geotechnical Engineer responsible for slope stability analyses of embankment fill slopes and retaining walls, and for a settlement analysis of embankment fill into wetlands, as part of a roadway alignment and bridge replacement project.

**S.R. 3088, Section A01, Hookstown Grade Road Bridge, Allegheny County, PA, Pennsylvania Department of Transportation, District 11-0.** Geotechnical Engineer assisting with the technical preparation of a final geotechnical engineering report (GER) of a ten-meter-long single-span adjacent box beam bridge to replace a deteriorated single-span bridge.

**Structural Stabilization and Rehabilitation Grouting Program, United States Postal Service Eastpointe Facility, Clarksburg, WV, United States Postal Service (USPS)/Advanced Construction Techniques, Ltd. (ACT).** Resident Quality Control Engineer responsible for inspecting and monitoring on-site construction activities for a single-story structure used as a mail transfer facility and post office.

**Sinkhole Remediation, Bridgeport Wastewater Treatment Plant, Bridgeport, PA, Borough of Bridgeport.** Geotechnical Engineer responsible for inspecting the drilling and installation of four new groundwater



## CARL G. SELFRIDGE

## *Geotechnical Engineer*

monitoring wells, and for assisting with the investigation of the causes of sinkhole formation at a wastewater treatment plant.

**S.R. 0202 Improvement Project, Section 404, Chester and Montgomery Counties, PA, Pennsylvania Department of Transportation, District 5-0.** Geotechnical Engineer responsible for the analysis of bridge foundation piles for down-drag and alternative design options for bitumen coating. Also designed a cased-bentonite mix around the pile in the zone of negative skin friction.

**PI 125, Orms Street Bridge, Providence, RI, Amtrak.** Geotechnical Engineer responsible for the 90 percent design and analysis of a jet grouting underpinning specification for the temporary support of a stone masonry retaining wall while lowering the tracks along the face of the wall.

**S.R. 0309, Section 100, Montgomery County, PA, Pennsylvania Department of Transportation, District 6-0.** Geotechnical Engineer for the widening and realignment of five miles of a four-lane expressway.

**S.R. 0222, Warren Street Bypass, Section 002, Berks County, PA, Pennsylvania Department of Transportation, District 5-0.** Geotechnical Engineer responsible for conducting technical reviews and preparing comments for District 5-0 on geotechnical reports submitted by the design consultants.

**PI 125, Crib Wall at Mineral Springs Avenue, Pawtucket, RI, Amtrak.** Geotechnical Engineer responsible for assisting in the evaluation of alternatives for supporting a crib wall structure during the lowering of the tracks along its face.

**PI 126, Track 4 Extension, Attleboro, MA, Amtrak.** Geotechnical Engineer responsible for the evaluation and analysis of consolidation settlement of a peat layer in the evaluation of the peat to support the proposed new track.

**Instrumentation Monitoring, Northern Solid Waste Management Center B 2 at Cherry Island, Wilmington, DE, Delaware Solid Waste Authority.** Geotechnical Engineer assisting in the quarterly and monthly monitoring and maintenance of 300 geotechnical instruments at this landfill which is constructed on 70 feet of soft dredge spoils. Instrumentation includes settlement plates and the use of an inclinometer probe.

**Longwood Gardens Service Road Underpass, Kennett Square, Chester County, PA, Longwood Gardens, Inc.** Geotechnical Engineer responsible for performing site reconnaissance and the preparation of the reconnaissance soils and geological engineering report (RSGER) for a simple-span, prestressed concrete box beam bridge for S.R. 0926 over a proposed maintenance driveway.

**S.R. 0202 Improvement Project, Section 400, Chester and Montgomery Counties, PA, Pennsylvania Department of Transportation (PennDOT), District 6-0.** Geotechnical Engineer responsible for assisting with the evaluation and organization of hydrologic information used to evaluate stormwater runoff and its influence on groundwater infiltration at drainage structures and wetland areas.

**Liberty Street, Clinton, CT, Amtrak.** Geotechnical Engineer responsible for drilling inspection and stability analysis of an existing road bridge abutment for the Amtrak Northeast Corridor High-Speed Rail Improvement Project.

**Buttonball Road, Old Lyme, CT, Amtrak.** Geotechnical Engineer responsible for drilling inspection and stability analysis of an existing bridge abutment for the Amtrak Northeast Corridor High-Speed Rail Improvement Project.



## **CARL G. SELFRIDGE**

### ***Geotechnical Engineer***

**Lake Road, East Haven, CT, Amtrak.** Geotechnical Engineer responsible for drilling inspection and stability analysis of the existing road bridge abutment for the Amtrak Northeast Corridor High-Speed Rail Improvement Project.

**Ferry Street, New Haven, CT, Amtrak.** Geotechnical Engineer responsible for drilling inspection and stability analysis of an existing road bridge abutment for the Amtrak Northeast Corridor High-Speed Rail Improvement Project.

**I-95, East Haven, CT, Amtrak.** Geotechnical Engineer responsible for the geotechnical exploration of a bridge pier for the Amtrak Northeast Corridor High-Speed Rail Improvement Project.

### ***PROFESSIONAL AFFILIATIONS:***

American Society of Civil Engineers  
The GEO-Institute  
Timber Framers Guild  
Construction Institute (ASCE)

**DAVID E. MOORE, P.E.**

**Civil Department Manager**

***Expertise:***

Mr. Moore has thirty years experience in design and construction in the fields of planning, civil engineering, structural engineering, general contracting, expert testimony, land development, surveying, landscape architecture, project and business management.

Presently Mr. Moore manages the civil engineering department of the CTL Engineering South Charleston WV office. This office performs consulting engineering in the fields of civil engineering, environmental engineering, geotechnical engineering and testing.

Prior to his current position Mr. Moore founded Alliance Consulting Engineers and Surveyors a consulting engineering firm with offices in Arvada and Longmont Colorado. Mr. Moore managed and directed multiple projects and employees in the fields of planning, civil engineering, structural engineering, marketing, business administration, land development, surveying, landscape architecture, water resources, design build and construction management.

During Mr. Moore's tenure with Jehn Engineering and Kidde Consultants he performed professional engineering duties encompassing civil and structural design, expert testimony, surveying, marketing, water resources, public presentations, project management, quality assurance and quality control. These professional engineering duties were performed for a diverse array of private and public clients and encompassed a broad spectrum of duties.

While employed by Fluor-Daniel Mr. Moore was a civil construction engineer on large power plant projects throughout the United States. Mr. Moore performed design-build civil engineering services on hydroelectric and gas plants in Virginia, Texas and Wyoming. These projects were in the hundreds of millions to billions of dollars in magnitude and were designed and built by Fluor-Daniel encompassing design, procurement, construction and implementation.

***Education:***

B.S., Civil Engineering  
West Virginia University Institute of Technology, Montgomery WV 1974-1978

M.S., Civil Engineering  
Colorado University, Boulder CO 1981-1983

***Professional Registration:***

Registered Professional Engineer, Maryland, # 15100; Nevada, # 19250; West Virginia; Wyoming, # 11010; Colorado # 22495; Alberta Canada # 98121

***Career Experience:***

CTL Experience – 1 year  
Other – 29 years



**DAVID E. MOORE, P.E.**

**Civil Department Manager**

***Project Experience:***

***Residential Subdivisions and Commercial Sites***

Mr. Moore has performed design, project management and construction management of numerous residential subdivisions and commercial sites in Maryland and Colorado. Residential subdivisions included small one to two lot subdivisions up to subdivisions with 400-500 lots. Commercial project experience includes banks, restaurants, multi-story commercial buildings, hotels, malls and car sale and maintenance facilities. These projects include annexation, zoning, planning, platting, road design, utility design, grading, drainage, storm water management, landscaping, development agreements, cost estimates, and construction.

***Golf Courses***

Mr. Moore was project manager, engineering designer and construction administrator for the City of Arvada West Woods Ranch public golf course encompassing an initial 18 holes and the later addition of nine more holes. This project also encompassed over 400 acres of residential development, design and construction of 1.5 miles of four-lane boulevard, major bridge design to pass 3500 cfs Ralston Creek, two miles of trail design, wetland mitigation, irrigation design pedestrian bridge and golf cart bridge designs.

***Water Resources and Drainage Projects***

Mr. Moore designed and performed construction administration on water resources and drainage projects for developers, builders, and municipalities, ditch companies and water districts. Practically every project requires a drainage report and plan encompassing storm water management, flood studies, Letters of Map Revisions (LOMAR's or CLOMAR's) or storm drain design. Several notable projects include the Ralston Creek/Croke Canal overpass, Church Ditch flow limiter, Farmers Highline Canal realignment, and various flood studies on creeks and rivers.

***Landscape Architecture***

Mr. Moore performed design of landscape plans on many residential and commercial projects including a design/build regional park for the Town of Erie, Colorado encompassing an all purpose athletic field, baseball field with bleachers, backstops and dugouts. Additional design build projects include Candlelight Ridge Estates (125 lots) and Ryan Ranch Subdivision (130 lots).

***Colorado Department of Transportation Road Design***

State road design projects include 2 miles of US 60 road design in Johnstown, Colorado; Platte River Bridge/Culvert replacement in Littleton, CO; US 119 road improvements in Black Hawk and Longmont Colorado and State Highway 52 road re-design in Boulder County, Colorado.

***Seniors Housing***

Design of senior housing projects include the Golden Pond Seniors Housing encompassing a campus of senior apartments, assisted living and Alzheimer's facilities in Golden, CO; Arvada Estates senior housing an 118 unit senior housing project in Arvada, CO; Broomfield Retirement an 118 unit senior housing project in Broomfield, CO and Orchard Gardens an 85 unit Alzheimer's facility in Arvada, CO.



**DAVID E. MOORE, P.E.**

**Civil Department Manager**

***Land Development***

Mr. Moore has assisted many developers through the land development process as a consultant, owner and partner. Project experience includes preparation of feasibility studies, project proforma's, preparation of loan packages, negotiation of development agreements and construction administration. Notable projects include Ryan Ranch Subdivision in Jefferson County, Colorado; Candlelight Ridge in Erie, Colorado; Ridgeview Estates in Adams County, Colorado, and Legend Ridge in Niwot, Colorado.

***Structural Engineering***

Mr. Moore has performed structural design, inspections, retaining wall designs, and box culvert designs, on residential, commercial and public projects. Larger projects include the Ralston Creek Bridge, trail and equestrian underpass for the City of Arvada, CO; Platte Canyon Road box culvert replacement for the State of Colorado and the Sheridan Community College dormitory buildings in Sheridan, Wyoming.

***Utility Projects and Pump Stations***

Preparation of utility reports and design and construction of water and sewer transmission lines, holding ponds, buildings and pump station facilities for raw water, potable water and sewer for developers, utility districts and municipalities. Projects include the regional sewer pump station for the Clear View project in Johnstown, CO; the raw water reservoirs and pump station for the City of Arvada Church Ditch takeout project in Arvada, CO.

***Power Projects***

Mr. Moore was project civil/construction engineer on the 1.3 billion dollar Bath County Pumped Storage project for Virginia Electric and Power Company (VEPCO) and in Bath County, Virginia. This project involved two earthen dams of which one was the tallest earth fill dam in the world at that time, design and construction of the powerhouse, tunnels and related appurtenances. Mr. Moore was a civil/construction engineer on the Chevron Carter Creek Gas Project in Evanston, Wyoming. This project was a 500 million dollar gas purification facility that was designed and constructed to purify natural gas. On both projects Mr. Moore was in the field performing design, direction of field personnel, inspections, quality control, material and equipment procurement, and related civil engineering duties.

***Professional Affiliations:***

American Society of Civil Engineers  
American Institute of Architects  
Home Builders Association  
Society of American Military Engineers



# Gregory L. Foreman, P.E.

## Project Engineer

### **EXPERTISE:**

Mr. Foreman serves as Project Manager and Design Engineer for a multitude of civil site design projects. Mr. Foreman's provides civil site design services for a multitude of clients, including municipal, commercial and private developers. Design services provided include site grading, potable water, sanitary sewer, storm sewer, pedestrian walkways, vehicular thoroughfares, preparation of permits, project specifications, plans and engineering calculations.

### **EDUCATION:**

Bachelors of Civil Engineering Technology Fairmont State College, Fairmont, West Virginia, 1989  
Associates of Science (Mechanical) Fairmont State College, Fairmont, West Virginia, 1989  
Associates of Science (Drafting and Design) Fairmont State College, Fairmont, West Virginia, 1989

### **PROFESSIONAL REGISTRATION / CERTIFICATIONS:**

Registered Professional Engineer: West Virginia, 1999, No. 014165.

### **CAREER EXPERIENCE:**

CTL Experience – 5 years  
Other Engineering – 17 years

### **RELEVANT PROJECT EXPERIENCE**

#### **Commercial / Industrial**

WV Blue Cross / Blue Shield Parkersburg Headquarters – Parkersburg, WV - *Project Manager* – Site Development, Storm Water Management, Parking Lot, Utility, Permitting  
Cumberland Concrete- Lavale, MD – *Project Engineer* – Storm Water Management Plan  
NFI NDC Warehouse – Canton, OH – *Project Engineer* – Development & Parking Lot Pavement Design  
WD Partners Red Lobster Restaurant – Morgantown, WV – *Project Engineer* – Site & Retaining Wall Design  
Ray Dental Office – New Building Complex - Fairmont, WV - *Project Engineer* – grading plan, parking facilities and storm water management.

#### **Energy Resources**

Stone Energy Marcellus Shale Gas Development– Various, WV – *Project Engineer* – Impoundments and Pad Design  
Atlas Energy Resources Marcellus Shale Gas Development– Various, WV – *Project Engineer* – Impoundments and Pad Design

#### **Parks & Recreational**

BOPARK Dorseys Knob – Morgantown, WV – *Project Engineer* – Access Road, Pavilion, Handicap Access

#### **Residential Development**

Johnson Miller Hill Development – Morgantown, WV – *Project Engineer* – Site Development – Storm Water Management, Entrance Permits  
The Woods Mid-Rise – Martinsburg, WV – *Project Engineer* – Site Development, Utilities, Permitting  
Charles Point – Bridgeport, WV – *Project Engineer* – Site Design, Pond Design and Certification  
South Hills Farms Subdivision expansion – Bridgeport, WV - *Project Engineer* – lot layout and sanitary sewer  
Timber Valley Development - Fairmont, WV - *Project Engineer* – layout of lots, streets, sewer and water lines.





## Gregory L. Foreman, P.E.

## Project Engineer

Crest View Acres Housing Development - Taylor County, WV - *Project Engineer* – utility locations and infrastructure development  
Auburn Woods Housing Development

### *Sanitary Sewer and Water Systems*

Idlewood Enterprises Townhome Development – *Project Manager* - Sanitary Sewer Design / Permitting  
Adrian Enterprises Harvest Ridge Development – Morgantown, WV - *Project Manager* - Sanitary Sewer Design / Permitting  
WHX Canterbury Woods Development - *Project Manager* - Sanitary Sewer Design / Permitting  
MDE –MBOM Pee Wee Hill Water Supply - Kitzmiller, MD - *Project Engineer* – New Water Supply System Design  
WVDEP – Fairview Water Supply Investigation – Fairview, WV - *Project Engineer*  
WVDEP – Tioga / Craigs ville Water Supply Investigation – Tioga, WV - *Project Engineer*  
MDE –MBOM Pee Wee Hill Water Supply Investigation- Kitzmiller, MD - *Project Engineer*  
City of Fairmont - Sanitary Sewer Improvements - Fairmont, WV - *Project Engineer* - field investigation, design, specifications and permitting for replacement of an existing sewer line  
City of Shinnston Waste Water Improvement Project - Shinnston, WV - *Project Engineer* - design and analysis of alternatives for residential lot layout and sanitary sewer service  
Dominion Transmission - Oakford Compressor Station, Sanitary Sewer Extension Project, Delmont, PA- *Project Engineer*  
City of Shinnston Water System Improvement Project - Shinnston, WV - *Project Engineer* - design, plans and specifications for upgrading an existing potable water system  
Clarksburg Water Board – Waterline Replacement - Clarksburg, WV- *Project Engineer* - conducting field surveys and developing construction plans & specifications for replacement of waterlines  
Clarksburg Waterline Extension for FBI Facility - Bridgeport, WV- *Project Engineer* - conducting field surveys, developing site plans, creating design plan & specifications for the construction of a water storage facility. Responsible for engineering inspection during construction.  
Century Volga Public Service District - three waterline extension projects, Philippi, WV - *Project Engineer* – site condition survey, conducting research for right-of-way acquisitions, determining waterline sizes, calculating storage tank capacity, developing plans for the erection of water storage facilities  
Wetzel County Public Service District – Waterline Extension - , Wetzel County, WV - *Project Engineer* – site condition survey, determining waterline sizes, calculating storage tank capacity, developing plans for the erection of water storage facilities  
Gilmer County Public Service District - waterline extension - Gilmer County, WV - *Project Engineer* - site condition survey, plans for the erection of water storage facilities.  
Adrian Public Service District - four waterline extension projects - Adrian, WV - *Project Engineer* – site condition survey, conducting research for right-of-way acquisitions, calculating fire protection feasibility, determining waterline sizes, calculating booster pump station sizes, calculating storage tank capacity, developing plans for the erection of water storage facilities and booster pump stations  
Huffman Industrial Park - potable water facilities and sanitary sewer - Bridgeport, WV - *Project Engineer* – fire protection and strategic placement of fire hydrants, designing grade and flow direction, manhole

### *Transportation*

Star City Streetscapes – Star City, WV - *Project Manager* – Street Improvement, Sidewalks, Pavement Design, Drainage Design Systems, Construction Plans / Specs/ Bids  
Town of Fairview- Sidewalk Improvement - Fairview, WV - *Project Engineer* – design, construction plans and specs



# Gregory L. Foreman, P.E.

**Project Engineer**

## *Utility*

Allegheny Energy Supply Albright Station – Albright, WV – *Project Manager* – Site Construction Master Plan  
Grant Town Water Tank - Grant Town, WV - *Project Engineer* – Paint Investigation & Specs for repainting tank

## *Other*

WYK Quiet Dale UM Church – Quiet Dale, WV - *Project Manager* - Site Development Plan

## **PROFESSIONAL AFFILIATIONS:**

American Society of Civil Engineers  
The GEO-Institute  
Timber Framers Guild  
Construction Institute (ASCE)



## **JOSEPH STANLEY**

*Staff Engineer*

### ***Expertise***

Mr. Stanley is a Staff Engineer/CAD Designer in the Morgantown, WV office. His responsibilities include assisting in the planning and design of civil site design projects involving land planning and development aspects. He is familiar with various engineering software programs including AutoCad 2004 and AutoCad Land Desktop 2004, which provide support for the planning and design projects.

### ***Education***

A.S., Drafting and Design  
Fairmont State College; Fairmont, West Virginia, 2001

### ***Professional Registrations/ Certifications***

Advanced GPS Training Course

***7 Years with CTL Engineering Inc.***

### ***Experience***

*A partial listing of Mr. Stanley's relevant project experience includes:*

#### ***ODNR and ODNR Emergency Programs***

Staff Engineer and GPS Survey Operator for 3 ODNR Reclamation Projects and 3 ODNR Emergency Projects

#### ***Chaplin Hill Business Park, Morgantown, West Virginia***

Staff Engineer responsible for conceptual layout and initial site design for the Monongalia County Economic Development Authority.

#### ***WVU Hospitals, Morgantown, WV***

Staff Engineer performing layout and design support services in conjunction with WVDOH and WVU for a new access road and parking area design for surrounding hospital area.

#### ***Wharf District Revitalization Project, Morgantown, WV***

Cadd Designer assisting in the design of site plans and conceptual design for sidewalks and parking areas for the Wharf District revitalization project.

#### ***West Virginia University***

CAD Designer for the layout, design and storm water management of various parking areas for West Virginia University.

#### ***Pierpont Heights, Morgantown, WV***

CAD Designer responsible for the design on this up-scale townhouse community. Services also included an internal roadway design and parking scheme, upgrading of a lengthy access road, utility planning including the design and permitting of a sanitary collection system and a sewage treatment plant facility. Construction stakeout and monitoring were also provided.



**JOSEPH STANLEY**

*Staff Engineer*

***GPS Surveying, Various Locales***

GPS Surveyor responsible for establishing survey control for various aerial mapping and cellular tower projects.

***EA Morgantown, LLC, Morgantown, West Virginia***

CAD Designer responsible for drafting and assisting engineer for the civil site design of a 900 bedroom student housing complex. Submitted permits to the WVDOH for a turning lane and entrances. Prepared sediment and erosion permits for the WVDEP. Also, prepared stream crossing permits and performed a 100 year Flood Study.

**CHARLES T. WALTZ, P.E.**

*Geotechnical Project Manager*

***Expertise:***

Mr. Waltz serves as a Project Manager in the Geotechnical Engineering Services Department of CTL Engineering of West Virginia, Inc.

A recent addition to CTL's staff, Mr. Waltz was with Triad Engineering where he was Staff Engineer/Project Engineer and provided engineering services to a variety of projects, including site development, geotechnical subsurface investigations, and road construction. The majority of these projects were performed in West Virginia where concerns for mine subsidence and slope stability were routinely investigated.

***Education:***

B.A., Business Administration  
Fairmont State University  
B.S., Engineering  
Fairmont State University  
Graduate Studies, Geotechnical Engineering  
West Virginia University

***Professional Registration / Certifications:***

Registered Professional Engineer  
West Virginia, # 17626; Virginia, # 37038

***Project Experience:***

Geotechnical Engineering / Intelos, USCellular, CellOne / North central West Virginia  
Geotechnical investigations were performed for numerous guyed, freestanding, and monopole towers communication towers. These towers varied in height from 40 and 200 feet tall.

Geotechnical Engineering / Various Clients /  
Geotechnical investigations were performed for numerous projects including from waste water treatment plants, church additions, and commercial developments. In addition, routinely performed slope stability analysis and provided remediation recommendations.

*Geotechnical Engineering / Pyrite Remediation / North Marion High School / Marion County, WV*

Extensive project involving identification and removal of pyritic material from the foundation bearing soils situated beneath existing buildings. The reaction of the pyritic material had contributed to foundation heave and damage to the structures at the facility. Pyrite is a natural occurring mineral, which may react in the presence of air and water resulting in swelling. The mineral is frequently concentrated around coal seams. It is also a reactant in the formation of acid mine drainage (AMD). After the pyritic material was removed, the excavated bearing surface was treated to inhibit future reaction and structural support reestablished to the buildings.



**CHARLES T. WALTZ, P.E.**

*Geotechnical Project Manager*

Feasibility Study / Morgantown Airport / Monongalia County, WV

A study on the viability of employing fly ash material from local coal fired power plants as fill material for the development of runway extensions was performed. Research included investigation of the characteristics of the material and the economic effect of current regulations regarding its use.

*Geotechnical Engineering / West Virginia Division of Highways*

Blackshere Bridge (Marion County)

Kyle Bridge (Tyler County)

Geotechnical investigation included test borings, laboratory tests, and analyses ascertain foundation depths for piers and abutments, as well as slope stability of the approaches and suitability of roadway realignment options.

Jarvisville Road Bridge (Harrison County)

This project was a joint venture between an International Coal Group (ICG) and the State of West Virginia. Supervised the various geotechnical, civil design, and hydrological studies performed to advance this project. Project involved roadway redesign, temporary road location, stream crossing, utility relocation, stormwater management, and stream restoration.

Lodgville Road (Harrison County)

Geotechnical investigation provided for primary consultant. Project involved upgrading and realignment of an existing rural road to accommodate increased traffic. Analytical services included numerous slope stability analyses of proposed side valley fills and design of a steepened slope embankment for the railroad overpass abutments.

I-68 Visitors Center (Preston County)

Geotechnical investigation provided for the primary consultant. Project involved development of a visitor's center near the I-68 West Virginia/Maryland state line. Design included a mechanically stabilized slopes (MES) for the return ramp, which was the first MES incorporated into a project by the West Virginia Division of Highways (WVDOH). In addition, assisted the WVDOH in the development of WVDOH standards for reinforced slope design.

*Geotechnical Engineering / University Town Center (Mon-View) / Granville, WV*

This is a commercial development initiated by Consolidation Coal Company to utilize abandoned mine property. The project involved a subsurface investigation, stabilization design, and grout injection of potential mine voids underlying several of the marketable parcels. In addition, developed sites were reevaluated with respect to the competency of fill placed by others to verify the sites were ready for construction. Additional, tasks included the stabilization of a landslide, which had been precipitated by water discharging from abandoned mines.



## **JAMES P. GOWARTY, JR.**

*Construction Services Manager*

### *Expertise:*

As the Construction Services Manager for CTL Engineering of West Virginia Inc., Mr. Gowarty is responsible for supervising field and laboratory technicians. He is also responsible for report writing for field and laboratory testing, project management, client contact, estimating, proposals and invoicing for Construction Services Department. Mr. Gowarty's experience also includes surveying, pre-mining and pre-blast surveys, field supervision of drilling crews, Phase I Environmental Site Assessments and radiation safety officer and corporate safety officer. In addition, Mr. Gowarty is the Construction Materials Testing Supervisor, providing concrete, compaction, and aggregate testing and has over twenty (20) years of experience with Nuclear Gauge Operation.

Mr. Gowarty has been CTL's Corporate Safety Officer since Fall 2008.  
Mr. Gowarty is CTL's USNRC Safety Officer.

### *Education:*

B.S., Civil Engineering Technology, 1990  
Fairmont State College; Fairmont, West Virginia

A.S., Mechanical Engineering Technology, 1990  
Fairmont State College; Fairmont, West Virginia

### *Professional Registrations/ Certifications:*

#### *Safety*

Radiation Safety Training, CPN Corporation  
Radiation Safety Officer Training, Troxler Electronics  
Principals of Fire Protection, Fairmont State University  
Certified Forklift Trainer, Brickstreet Insurance  
Drug Free Workplace Employee Trainer, Working Partners  
Drug Free Workplace Supervisor Trainer, Working Partners

#### *Other*

West Virginia DOT Certified Compaction Technician  
West Virginia DOT Certified Bituminous Concrete Technician  
West Virginia DOT Certified Portland Cement Concrete Technician  
West Virginia DOT Certified Aggregate Sampler  
NICET Level III Asphalt & Concrete  
NICET Level II Soils  
Certified Dipfloor Profiler Operator, Face Company

### *Career Experience:*

CTL Experience - 21 years



**JAMES P. GOWARTY, JR.**

*Construction Services Manager*

*Project Experience:*

**Power Facilities**

Hatfield Power Station, Masontown, PA  
Albright Power Station, Albright, WV  
Pleasants Power Station Landfill, Willow Island, WV  
Blackoak Substation, Allegany County, WV  
Fort Martin Power Station, Morgantown, WV  
Linden Substation, Front Royal, VA  
Malden Substation, California, PA  
Graymont Substation, Pleasant Gap, PA  
Grable Substation, Washington, PA  
Meadowbrook Substation, Stephens City, VA  
Maidstone Substation, Berkeley County, WV  
Lamberton Substation, Ellenboro, WV  
Lake Lynn Power Station, Lake Lynn, PA  
Mitchell Substation, Monongahela, WV  
Fayette Energy Facility, Masontown, PA  
Warrior Run Company, Generation Plant, Cumberland, MD  
Harrison Power Station, Haywood, WV  
John Amos Power Plant, Nitro, WV  
Grant Town Power Plant, Marion County, WV

**Transportation**

Monongahela Blvd, Morgantown, WV  
Route 7, Morgantown, WV  
Various Projects for WVDOT, WV  
Colonial Drive Roadway Evaluation, Waynesburg, PA  
I-79 Paving, Morgantown, WV  
Clarksburg Streetscape, Clarksburg, WV  
High Street Streetscape, Morgantown, WV  
Mont Chateau Road Paving, Cheat Lake, WV  
Route 50 Paving, Preston County, WV  
Route 72 Paving, Preston County, WV  
WVU Research Park Roadway, Morgantown, WV  
Route 250 Gradations, Fairmont, WV  
Hunter Lane Paving Project, Morgantown, WV  
WVU Route 705, Morgantown, WV  
Route 20 Utility Compaction, Pineville, WV  
Osage Bridge S331-19-01.98, Morgantown, WV  
WVDOT Bridge Replacement, Grant Town, WV  
Mon Fayette Expressway, Cheat Lake, WV  
Morgantown Airport, Morgantown, WV  
Marshall County Airport, Moundsville, WV





## **JAMES P. GOWARTY, JR.**

*Construction Services Manager*

Blue Sulphur Bridge, Ona, West Virginia

### **Education**

South Jefferson High School, Charles Town, WV  
Waynesburg College Eberly Hall, Waynesburg, PA  
Waynesburg College Benedum Hall, Waynesburg, PA  
Petrograph West Taylor Elementary School, Flemington, WV  
Clay Battelle School, Blacksville, WV  
WVU Wise Library, Morgantown, WV  
WVU Life Sciences Building, Morgantown, WV  
WVU Student Recreation Facility, Morgantown, WV  
Suncrest Junior High School Construction Project, Morgantown, West Virginia

### **Healthcare**

Monongalia General Hospital, Pavement Investigation, Morgantown, WV  
WVU Hospitals, Pt. Marion Road, Morgantown, WV

### **Building Development**

Kohl's Shopping Center, Pavement Coring, Clarksburg, WV  
Super Wal-Mart, Fairmont, WV  
Eastpointe Commercial Development, Harrison County, WV  
Avery Church, Morgantown, WV  
Fairmont Federal Credit Union, Bridgeport, WV  
Rite Aid, Westover, WV  
FedEx Ground Facility, Clarksburg, WV  
Centra Bank, Westover, WV  
Bridgeport Development, Bridgeport, WV  
Little Caesars, Washington, PA  
GA Brown Hi Tech Building, Fairmont, WV  
Super Wal-Mart, Kingwood, WV  
Japanese Steakhouse, Morgantown, WV  
United Federal Credit Union, Mount Pleasant, PA  
Kroger, Suncrest Town Center, Morgantown, WV  
Hampshire County Judicial Center, Romney, WV  
Evergreen Technology Park, Waynesburg, PA  
Beckley Federal Courthouse, Beckley, WV  
Glenmark Centre, Morgantown, WV  
Newpointe Center, Clarksburg, WV

### **Water/Wastewater Treatment Plants and Water Tanks**

Cheat Lake Wastewater Treatment Plant Expansion, Morgantown, WV  
Chaplin Hill Sewer and Water System Expansion, Morgantown, WV  
Olive Water Tank, Harrison County, WV  
Pine Grove Waterline, New Martinsville, WV



# PENINSULA HIGHWALL #1 & #2 DEP 14233



CTL Engineering Inc.

## HIGHWALL & SUBSIDENCE RECLAMATION – MINE SEALS

Morgantown, Monongalia County, West Virginia

### CTL Professional Services

- **Surveying**
- **Geotechnical**
- **Civil Site Design**
- **Construction Documents**

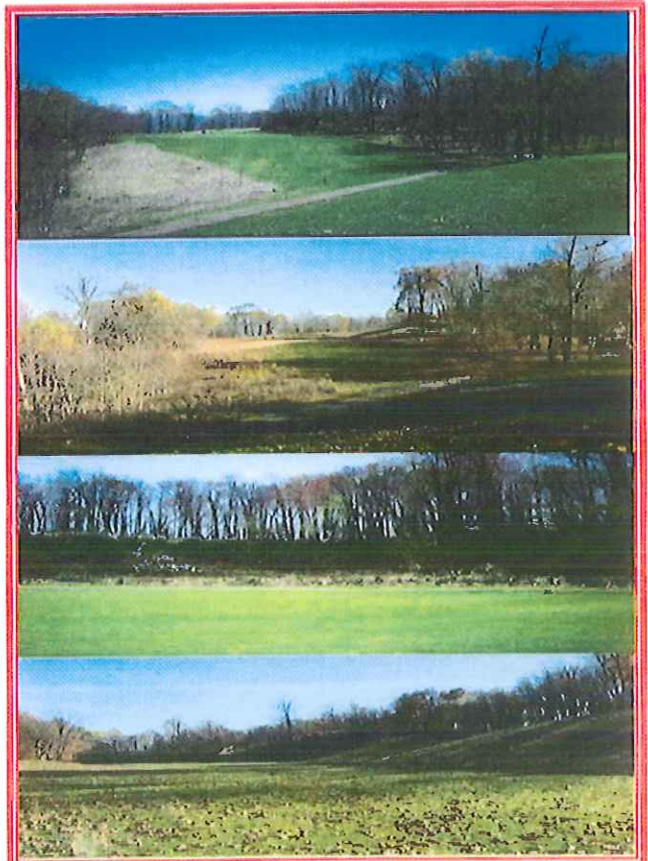
### Project Background

This site contained 1,800 LF of vertical to sloughed highwalls 15 to 25 feet high, 7 partially of totally collapsed mine portals, 1 open mine portal, subsidence depressions behind the portals and water present at or flowing from the portals.

### Project Scope

CTL Engineering of West Virginia, Inc. was retained to provide the following design:

- Access road into the site
- Wet seal 2 portals
- Regrade face of 2 portals
- Riprap channel and additional channel to carry water off site
- Backfill of highwalls and subsidence areas
- Restoration of golf path asphalt
- Conditioning and revegetation of all disturbed areas



### Client / Contact

WV DEP-AML&R  
601 57<sup>th</sup> Street  
Charleston, WV 25304

### Design Completion Date

November 2009

### Estimated Construction Cost

\$219,000

**ST. CLAIR PORTALS DEP 14233**

***MINE PORTALS, COAL REFUSE,  
HIGHWALLS & MINE DRAINAGE***



**CTL Engineering Inc.**

**Morgantown, Monongalia County, West Virginia**

**CTL Professional Services**

- **Surveying**
- **Geotechnical**
- **Civil Site Design**
- **Construction Documents**
- **Natural Stream Design**

**Project Background**

The site consisted of coal refuse, acid mine drainage with impounded water, collapsed mine portals and highwalls. 17 portals were found along the highwall bench. Three impoundments of approximately 70,000 sq.ft. had water flowing at 300 gpm with a pH value of 3.1 and iron >10 mg/l. A 35' to 45' high refuse pile was in the middle of the site as well as scattered refuse throughout the site.

**Project Scope**

CTL Engineering of West Virginia, Inc. was retained to provide the following design:

- Excavation and wet seal of at least 17 mine portals
- Dewater three impoundments
- 2000 LF of stream reconstruction
- Regrade and cover of coal refuse and spoil areas on mine bench
- Drainage control channels to carry water off site
- Backfill of highwalls using spoil material to original contour
- Conditioning and revegetation of all disturbed areas



**Client / Contact**

**WV DEP-AML&R  
601 57<sup>th</sup> Street  
Charleston, WV 25304**

**Design Completion Date**

**March 2010**

**Estimated Project Cost**

**\$1,500,000**

# CHEAT NECK (LENHART) LANDSLIDE DEP14233

## LANDSLIDE, MINE PORTALS & MINE DRAINAGE



**CTL Engineering Inc.**

**Morgantown, Monongalia County West Virginia**

### CTL Professional Services

- **Surveying**
- **Geotechnical**
- **Civil Site Design**
- **Construction Documents**

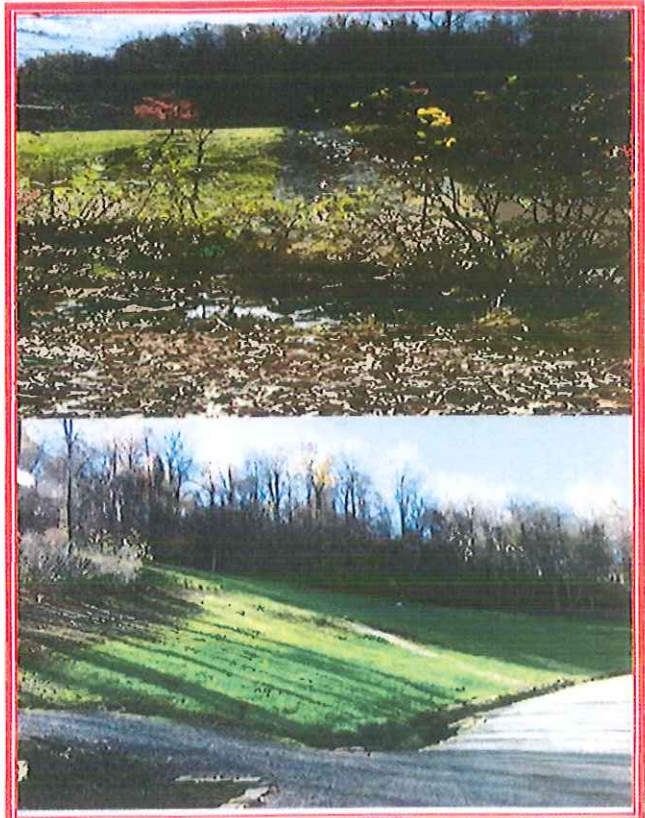
### Project Background

Drainage from two collapsed deep mine portals located behind the Lenhart residence created a small landslide. The slide measured about 50' wide and 80' long and the toe was within 20' of the residence and 10' of the LP gas tank.

### Project Scope

CTL Engineering of West Virginia, Inc. was retained to provide the following design:

- Regrade and or removal of the slipping material
- Excavation, dewatering and wet seal of each deep mine portal
- Drainage control channels to carry water off site
- Conditioning and revegetation of all disturbed areas



### Client / Contact

**WV DEP-AML&R  
601 57<sup>th</sup> Street  
Charleston, WV 25304**

### Design Completion Date

**June 2009**

### Estimated Construction Cost

**\$175,000**

**GENERAL CLAY #1 ODNR IM-0455**



**CTL Engineering Inc.**

***HIGHWALL RECLAMATION –  
POND & DRAINAGE CONTROL***

**Location: Wadesworth, Medina County, Ohio**

**CTL Professional Services**

- Surveying**
- Civil Site Design**
- Hydrology**
- Construction Specifications**

**Project Scope**

CTL Engineering of West Virginia, Inc. was retained to provide the following design:

- Remediate existing highwalls
- Regarding slopes to minimize highwall areas
- Provide positive drainage from the site
- Removal of low lying areas and diversion ditches
- Sealing of existing pond outlets
- Installation of new pond outlets
- Temporary erosion and sedimentation controls



**Client / Contact**

**ODNR - FORFEITURE  
2050 East Wheeling Ave.  
Cambridge, OH 43725**

**Design Completion Date**

**June 2008**

**Estimated Construction Cost**

**\$322,000**

**GENERAL CLAY #2 ODNR IM-0021**



**CTL Engineering Inc.**

***HIGHWALL RECLAMATION –  
DRAINAGE CONTROL***

**Location: Summit Station, Hocking County, Ohio**

**CTL Professional Services**

- Surveying**
- Civil Site Design**
- Hydrology**
- Construction Specifications**

**Project Scope**

CTL Engineering of West Virginia, Inc. was retained to provide the following design:

- Remediate existing highwalls
- Regarding slopes to minimize highwall areas
- Provide positive drainage from the site
- Removal of low lying areas and diversion ditches
- Removal and offsite disposal of existing culvert
- Installation of new 18-inch PE-PVC culvert
- Temporary erosion and sedimentation controls
- Two zero discharge runoff berms



**Client / Contact**

**ODNR - FORFEITURE  
2050 East Wheeling Ave.  
Cambridge, OH 43725**

**Design Completion Date**

**March 2008**

**Estimated Construction Cost**

**\$149,000**

**McCOURT LANDSLIDE ODNR CL-Yc-09-F**

# **LANDSLIDE STABILIZATION**



**CTL Engineering Inc.**

**Location: Yellow Creek Twp., Columbiana County,  
Ohio**

## **CTL Professional Services**

**Site Review & Reconnaissance  
Surveying & Mapping  
Geotechnical Evaluation  
Slope Stability  
Civil Site Design  
Construction Specifications**



## **Project Scope**

CTL Engineering of West Virginia, Inc. was retained to provide the following design:

- Remediate existing landslide area by regarding slopes
- Toe Key Design
- Provide positive drainage from the site
- Provide multiple bonding benches
- Underdrain for site
- Temporary erosion and sedimentation control

## **Client / Contact**

**ODNR - FORFEITURE  
2050 East Wheeling Ave.  
Cambridge, OH 43725**

## **Design Completion Date**

**November 2008**

## **Estimated Construction Cost**

**\$ 101,700**

# AARON'S RUN AMD PROJECT

## ACID MINE DRAINAGE TREATMENT SYSTEM



CTL Engineering Inc.

Location: Garrett County, Maryland

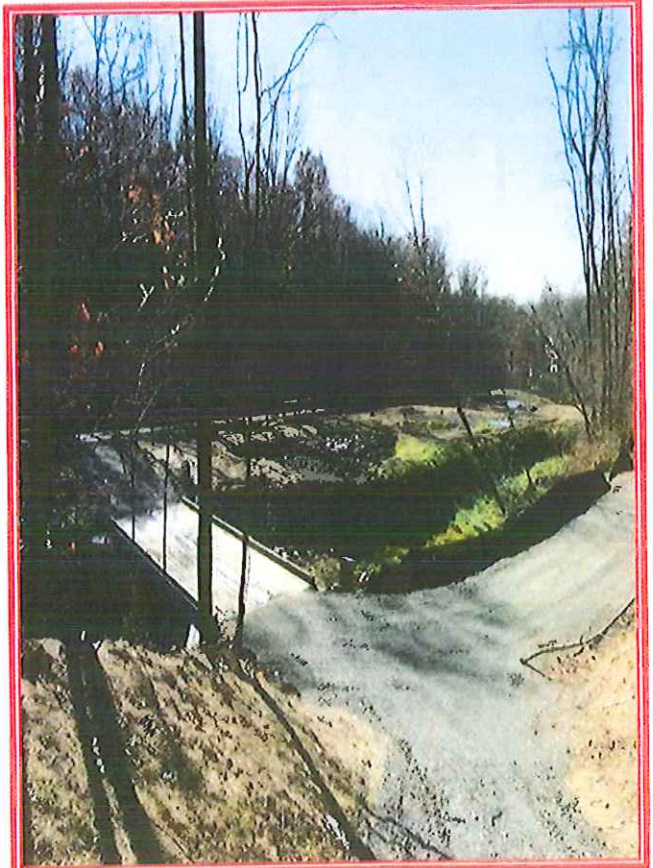
### CTL Professional Services

Site Review & Reconnaissance  
Surveying & Mapping  
Civil Site Design  
Permitting including USACOE, MDE Wetland,  
MDE S&E  
Construction Specifications

### Project Scope

CTL Engineering of West Virginia, Inc. was retained to provide the following design:

- Multiple AMD Treatment Systems
- 2 SAP Cells
- Slurry Doser
- Settling Ponds
- Natural Wetlands
- Full Site Grading Plans & Drainage Controls
- Access Road & Highway Rated Bridge
- All State & Federal Permitting
- Construction Specifications and Drawings



### Client / Contact

MDE AML Program  
160 South Water Street  
Frostburg, MD 21532

### Design Completion Date

October 2009

### Estimated Construction Cost

\$ 450,000



# WV DEP - LANDFILLS

## MONITORING WELLS - INSTALLATION, REDEVELOPMENT & ABANDONMENT



CTL Engineering Inc.

### Statewide West Virginia

#### **CTL Professional Services** **Geotechnical Drilling** **Monitoring Well Expertise**

#### Project Background

The State of West Virginia is in the process of closing various landfills throughout the state. These sites are required to have water monitoring wells in place to measure the quantity and quality of ground water flowing from and around these facilities. New monitoring wells are required, as well as redevelopment of existing wells that for various reasons have been found to be ineffective but usable. A large quantity of existing monitoring wells were required to be abandoned as found not in compliance with current WVDEP Monitoring Well regulations.

#### Project Scope

CTL Engineering of West Virginia, Inc. was retained to provide the following services:

- Provide West Virginia Certified Water Well Drillers with monitoring well expertise for 16 landfills located in 15 counties throughout the State of West Virginia
- Installation of 29 new monitoring wells
- Redevelopment of 28 existing Monitoring wells
- Evaluation of existing wells to determine whether to redevelop or abandon such wells
- Abandonment of 37 existing monitoring wells
- Installation & Redevelopment included drilling, measuring surge, and well head development for each well.



#### **Client / Contact**

**WV DEP-Waste Management**  
**601 57<sup>th</sup> Street**  
**Charleston, WV 25304**

#### **Project Completion Date**

**March 2010**

#### **Estimated Project Cost**

**\$1,000,000**



## *Firm's Equipment*

---

### Geotechnical Equipment

CTL Engineering Inc.'s subsurface exploration equipment is adaptable for use of barges or all terrain vehicles (ATV's). CTL can mobilize special equipment or a fleet of drilling rigs to a particular project requiring multiple units. CTL Engineering owns and operates ten (10) drill rigs with a capacity of drilling to a depth of 300 feet. Other equipment includes large diameter soil and rock core sampling equipment, in-situ pressure meters and cone penetrometers.

CTL's drill rigs are rotary drilling rigs equipped to conduct standard split-spoon sampling with the use of hollow-stem augering, casing advancer or mud rotary. The rigs are also equipped with Moyno pumps, wire-line or standard coring equipment for proper and efficient execution of a subsurface investigation program

For field and laboratory materials analysis, CTL is equipped to conduct pressure meter tests, vane shear tests and cone penetrometers tests in the field. The laboratory is equipped with consolidometers, triaxial and direct shear apparatus, permeability devices and normal soils classification equipment.



*CTL owns and operates a fleet of ten (10) drill rigs*



*CTL's ATV can drill in rough terrain*

### Chemistry Laboratory

The chemistry laboratory at CTL is equipped with Atomic Absorption equipment, spectrophotometers and gas chromatography equipment. CTL has the capability of and regularly performs both non-hazardous and hazardous waste tests.

CTL has established a quality control/ quality assurance plan, which is based on The American Council of Independent Laboratory Standards. CTL carries professional liability insurance coverage with a limit of \$1,000,00 per occurrence and aggregate.

### Computer Resources

Operating efficiency may mean the difference between successful project completion and job overruns. At CTL Engineering, Inc., we effectively utilize computer software programs to assist in project and account management, resource allocation, data transfer, and preparation of plans and specifications. CTL's use of innovative technology sets us apart from the competition.

### CADD Capabilities

Project designs and specifications are produced in our Computer Aided Drafting and Design (CADD) section using all releases of ACADD, including Release 2008. AutoCAD allows the user to interact with a wide variety of support software to modify project designs or perform different modeling functions. In addition, many public documents or plans are available in digitized form allowing CTL to directly download surveyed land plots or utility drawings. Successful use of CADD-based documents and/or plans has dramatically increased CTL's project efficiency and performance.

### Geotechnical Software

CTL's Geotechnical Department utilizes a wide array of computer models to analyze deep foundation design, pavement design, slope stability, hydraulics, and flood hazard evaluation. Our experienced engineers use the following software to develop solutions:

- AASHTO** - Rigid and Flexible Pavement Design
- APILE** - Calculation of Load-Settlement
- COYLE** - Analysis of Axially Loaded Piles
- DSS** - Dimension Solution Software
- ELSYM5** - Elastic Layered System Pavement Design and Analysis
- GINT** - Boring Logs & Lab Testing
- HY8** - Culvert Analysis
- HY9** - Bridge Scour Analysis
- HWY** - Asphalt Institute Pavement Design
- LPILE** - Analysis of Laterally Loaded Piles
- NEWNEG** - Analysis of Piles Subjected to Negative Skin Friction
- RETWALL** - Design of Cantilever and Gravity Retaining Walls
- SCHMERT** - Analysis of Shallow Foundations in Sand
- SHAFT** - Analysis of Drilled Shafts (Caissons)
- STABL6** - Slope Stability Analysis
- WEAP** - Pile Driving Analysis
- WSPRO** - Water-surface Profile Computation Model

## Civil Engineering Software

Eagle Point Watershed Modeling & Water Surface  
Profiling  
DCA Civil Engineering Design Software  
Civilsoft  
Groundwater for Windows  
TR-55  
Swamp  
HEC 1 and 2  
Survey 3.0

## Hydrogeologic Studies

The backbone of many hydrogeologic studies is the determination of ground water properties, flow direction, and effects of local ground water pumping or injection. CTL is experienced in utilizing a wide variety of computer models to predict various properties of ground water and ground water flow to include:

**MODFLOW** - USGS Finite element ground water model  
**MODPATH** - USGS Particle tracker package for MODFLOW  
**SURFER** - Data contouring package  
**CAPZONE** - Semi-analytical ground water mode  
**GWPATH** - Flowpath tracker for ground water models  
**SLUGIX** - Slug test analysis software  
**WHPA** - Wellhead Protection area delineation

## Remediation Models

CTL uses the latest in remediation technologies and computer models when preparing conceptual and full-scale remediation system designs. Today's programs allow our engineers to calculate engineering parameters (e.g., stripper efficiency, total dynamic head, air emissions, etc.) in minutes instead of several hours. This allows us to evaluate multiple technology applications operating at varying parameters. Some of the models CTL uses include:

**ShallowTray** - low profile aerator evaluation program  
**Stat** - low profile aerator design  
**HyperVentilate** - soil vapor extraction emission model  
**SoilVent** - soil vapor extraction design model  
Gast Blower Selection Program

## Telemetry

CTL employees are experienced with a variety of remote data acquisition devices. These systems allow us to interface with the remediation systems and remotely operate, collect data, and troubleshoot potential operating problems. Auto dialers alert employees in the event of an emergency. Remote monitoring of the system minimizes system down time and ultimately saves the project money. CTL employees are experienced with:

Telmax II  
RealFlex  
SiteLink  
SiteWindows

## Accounting Software

CTL uses Wind2 accounting software for all of the services we provide. The project manager first constructs a budget from the information developed in the site-specific proposal. Critical pathways of construction are identified and individual tasks developed for implementing the proposed work. A project number is assigned and costs tracked to each phase, task, or subtask of the project. Monthly billing review reports are provided to the managers to control and assess the progress of the project.

## General

CTL Engineering Inc. utilizes:

**Windows** based operating systems

**Microsoft Office 2007** is used for word processing, spreadsheets creation, data processing, and presentation creation.

Alternative software including Corel Suite is available, if necessary.

