

West Virginia Army National Guard

Camp Dawson Mail and ID Center

DEFK12012

February 7, 2012

1:30 PM

RECEIVED

2012 FEB -7 A 10:22

LOGISTICS DIVISION
STATE OF WV



McKINLEY & ASSOCIATES
ARCHITECTS • ENGINEERS • INTERIOR DESIGN



McKINLEY & ASSOCIATES

ARCHITECTS • ENGINEERS • INTERIOR DESIGN

February 3, 2012

Ms. Tara Lyle
Purchasing Division
2019 Washington Street, East
P.O. Box 50130
Charleston, WV 25305-0130

Dear Ms. Lyle and Members of the Selection Committee;

McKinley & Associates is pleased to provide the West Virginia Army National Guard, Division of Engineering and Facilities, with our Expression of Interest for the mail receiving and distribution / Identification card issue facility at Camp Dawson, in Kingwood, WV.

McKinley & Associates has been providing design services since 1981. With offices in Wheeling WV, Charleston WV, and Washington PA, McKinley & Associates supports the largest professional staff in the State, that includes Architects; mechanical, electrical, plumbing/life safety Engineers (MEP Engineers); as well as Construction Administration services and a Certified Interior Design Department.

McKinley & Associates has recently designed the MEP for both the Challenger Learning Center and Multi-Purpose buildings at Camp Dawson, so we are quite familiar with your base. We also have vast experience with projects that involve "mail receiving and distribution." We have been a partner with the United States Postal Service (USPS) for over two decades, including our third-consecutive multiple year open-ended contract with the USPS -Appalachian Area (Indefinite Quantity Contract 360070-11-J-0012), which includes the State of West Virginia (all 55 counties), 34 counties and 9 independent cities in Southwest Virginia, as well as all of the 95 counties in the State of Tennessee. We also have a multiple year open-ended contract with the United States Postal Service for the Erie/Pittsburgh District in Pennsylvania (Indefinite Quantity Contract 362575-09-J-0232). Throughout the years we have designed over 100 Post Offices facilities which included mail processing centers.

In addition to "mail receiving and distribution," many of these USPS facilities also serve as "identification card issue facilities." Passport services that offer photo services are designed in many of these postal facilities we have designed over the years. So, you can see with this experience McKinley & Associates is a natural fit to design your mail processing and ID card centers

The West Virginia State Police is another one of our clients that we have worked with for close to 20 years on numerous projects throughout the state, and we are currently the only Firm to be on our third multi-year open-ended contract with the State Police for all of their design work. Many of the WVSP detachments include centers for the Department of Motor Vehicles (DMV) that we designed for the issuance of Identification cards/licenses.

Thank you for reviewing our submission and considering McKinley & Associates for your project and we look forward to working with the West Virginia Army National Guard again.

Personal Regards,

Ernest Dellatorre
Director of Business Development
McKinley & Associates
edellatorre@mckinleyassoc.com

Corporate Information

Firm History

Founded in 1981, McKinley & Associates is a multi-discipline **full service Architectural & Engineering firm**, offering comprehensive **professional services in architecture, engineering, interior design and construction administration**. We have a broad range of skill and experience for projects involving commercial, governmental, educational, medical, religious and recreational operations. In January 2007, McKinley & Associates established a partial **Employee Stock Ownership Plan (ESOP)**, which is a benefit plan that gives our employees ownership of stock in our company. This is a **contribution to the employee**, not an employee purchase.



McKinley & Associates' Charleston, WV Office

Washington Trust Building



McKinley & Associates' Washington, PA Office

Firm Information

Tim E. Mizer, PE, RA
Director of Operations

Gregg P. Dorfner, AIA, REFP
Director of Architecture

Bradley A. Crow, PE, LEED AP
Director of Engineering

Date of Incorporation
1981 Wheeling, West Virginia

Number of Professionals

Total Size	37
Architects	8
Engineers	5
Architect Interns	1
Construction Admins	4
Arch./Eng. Designers	10
Interior Designers	1
Quality Controllers	2
REFPs	3
LEED APs	4
MIS	1

Location

Headquarters

The Maxwell Centre
Thirty-Two - Twentieth Street
Suite 100
Wheeling, West Virginia 26003
P: 304-233-0140
F: 304-233-4613

Satellite Offices

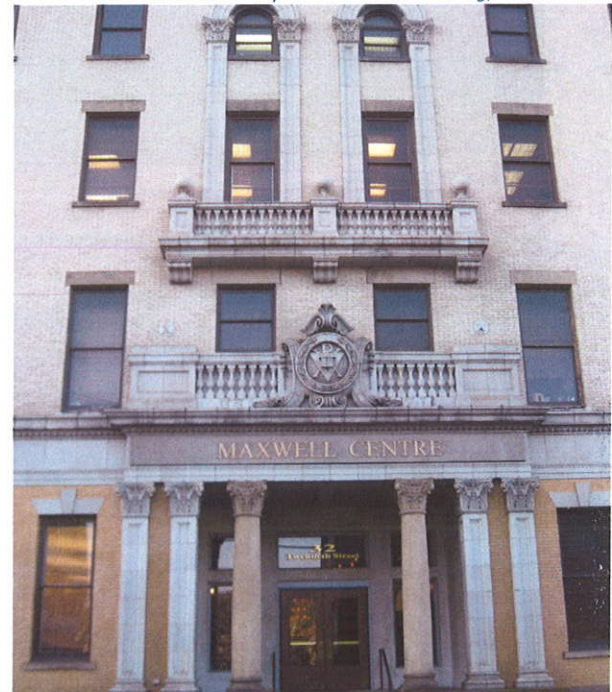
Charleston Enterprise Center
1116 Smith Street
Suite 406
Charleston, West Virginia 25301
P: 304-340-4267
F: 304-340-4269

Washington Trust Building
6 S. Main Street
Suite 1028
Washington, Pennsylvania 15301
P: 724-223-8250
F: 724-223-8252

Credentials

McKinley & Associates is a member of the following **organizations**:
CEFPI, AWI, WVEDC, AIA, NFPA, NCARB, ASCE, ASPE, BOCA, ASHRAE, ACI International

The Maxwell Centre - McKinley & Associates' Wheeling, WV Office



McKINLEY & ASSOCIATES
ARCHITECTS • ENGINEERS • INTERIOR DESIGN

Qualifications

Founded in 1981, McKinley & Associates has become generally accepted as the largest A/E firm in West Virginia. We provided design services for projects representing more than \$100,000,000 annually in construction value. We have a broad range of skills and experience for projects involving government agencies, manufacturers, commercial, educational, religious, medical

and recreational operations, as well as developers. In the past 10 years our firm has been awarded 4 prestigious AIA Honor and Merit Awards for our works.

The McKinley experience in commercial projects include Distribution Centers, Warehouses, Flex Space Buildings, High-tech Business Parks, Corporate Office Complexes, plus many more. For example, the Coldwater Creek project involved the construction of a brand new 125,000 SF distribution center that was completed under heavy time constraints.

Our services ranges from feasibility planning and concept design through construction administration. We understand that the success of commercial architecture is measured not just by architectural design alone, but also by the added considerations of all members of the design and development team.

A particularly important and integral part of commercial work is our understanding of the permitting process and agency procedures regarding zoning and building codes, traffic and parking requirements, and environment impact assessments.

Generally recognized as West Virginia's largest A/E firm, our 37 person Professional staff includes: Architects; Civil, Electrical, Fire/Life Safety, Mechanical and Structural Engineers; Interior Designers and Educational Planners. We have provided professional services in all 55 counties of West Virginia.



Cardinal Health Distribution Center, Clarksburg

Coldwater Creek Distribution Center, Mineral Wells



McKINLEY & ASSOCIATES
ARCHITECTS • ENGINEERS • INTERIOR DESIGN

Project Approach & Performance Data

McKinley & Associates has designed many buildings utilizing pre-fabricated structural components, including warehouse mail sorting facilities and multipurpose buildings. One project we have currently under-construction is a Multi-Purpose Building for the West Virginia State Police. McKinley specified the prefabricated structure, reviewed the proposal, and coordinated the remainder of the construction of the building. We have also worked with precast manufactures, designed a Million+ square foot distribution center for Cabela's, and a new State Office Building out of Prefabricated precast concrete materials. Our extensive 20+ years of experience with the postal service includes work on many postal distribution centers, mail sorting facilities, and consumer spaces over three states that gives us the knowledge to be able work with the WVARNG to design an efficient work space for your mail distribution at Camp Dawson.

The work to be performed by your design team is very clear; to evaluate, prioritize and design within budget and schedule to meet the needs of the West Virginia Army National Guard. In the past **30 years** we have extensive experience with similar projects. The technical depth of our professional staff indicates that this project can be accomplished without overloading our group or computer graphics systems. Our project team has been chosen for this project and they are available to dedicate the necessary time to this effort. We are available to start immediately upon our being selected. We can and will perform for you on time. This team is an "In-House" team that works together everyday and has done most of the projects here as a group. These team members have been working up to fifteen years together at McKinley & Associates.

Our **Philosophy** is to provide our clients with experienced leadership as well as state-of-the-art and innovative design expertise to accomplish the goals of their project. **Function, economics and versatility**, in addition to the development of strong **aesthetic appeal**, are crucial elements in our design process. We also believe that enhancement of the physical environment in which each individual lives and works should add significantly to the enjoyment of life. Our firm has dedicated our professional skills to attain these goals. The most important element of the entire process becomes **communication** from you to our designers. We use and welcome your input throughout the project. We continually achieve success in projects by maintaining **time and cost management, quality control and excellent communication** amongst the client and contractors.

The areas of expertise for each member coincides with his/her Role in this Contract. With our large staff we have the ability to have **registered architects and engineers designing within their area of expertise**. HVAC design by a Mechanical Engineer, electrical design by an Electrical Engineer, fire and life safety design by a Fire Protection Engineer. The Professional Engineers (PE) are not only "In-House," we also have **depth in numbers** of each discipline in our firm. Our Architectural staff provides you with an exceptionally talented group that will walk you through your project to competition. ASHRAE, and ACI International.

Our **Eleven Month Walk-Through** is a process where our professionals return to your facility eleven months after the project is completed. At that time they review all the work that was completed and check all warranties. We are making sure all of the covered work is in order and that the warranties do not expire with equipment or product not working properly. We have been doing this for **14 years** which has now been adopted as an AIA 101 Standard. We also conduct Post Occupancy Evaluations with the Owner to find out how well we matched the Owners' needs.

The firm uses a number of different **cost estimating** procedures depending on the type and size of project. Our ability to design within budget is shown in the following, which represent some of our recently bid projects:

<u>PROJECT</u>	<u>BUDGET</u>	<u>ACTUAL</u>	<u>DIFFERENCE</u>	<u>+/-</u>
Weirton State Building	\$4,291,000	\$4,083,000	\$208,000	-5.09%
Wood Co. Schools - Williamstown HS	\$11,635,000	\$11,253,000	\$382,000	-3.39%
Hancock Co. Schools - Oak Glen Middle	\$11,000,000	\$11,260,000	\$260,000	+2.36%
WV Northern Comm. College Annex	\$7,900,000	\$6,850,000	\$1,050,000	-15.33%
WV Northern Comm. College Phase II	\$1,200,000	\$1,194,000	\$6,000	-0.50%
Wheeling YMCA	\$2,200,000	\$2,100,000	\$100,000	-4.76%
Marshall Co. Schools - JM Fieldhouse	\$3,755,000	\$3,518,000	\$237,000	-6.73%
Marshall Co. Schools - Central ES	\$3,037,000	\$3,017,000	\$20,000	-0.66%
Maxwell Centre	\$1,800,000	\$1,734,000	\$66,000	-3.81%

The Marshall County School Bond Project's total budget is \$37,000,000.

To date, we are \$1,000,000 under budget.



Quality Control

Quality control at McKinley & Associates, Inc. is a constant process which begins with the initial project activity and continues through document submissions, construction and owner occupancy. The longevity and size of the firm and our history of success completing complex and innovative projects is founded upon our commitment to this process.

During the design phases all personnel become fully versed in the client's program, project requirements and design standards. The design team is responsible for identifying for the client any potential conflicts between program criteria and design standards and resolving those conflicts to the client's satisfaction.

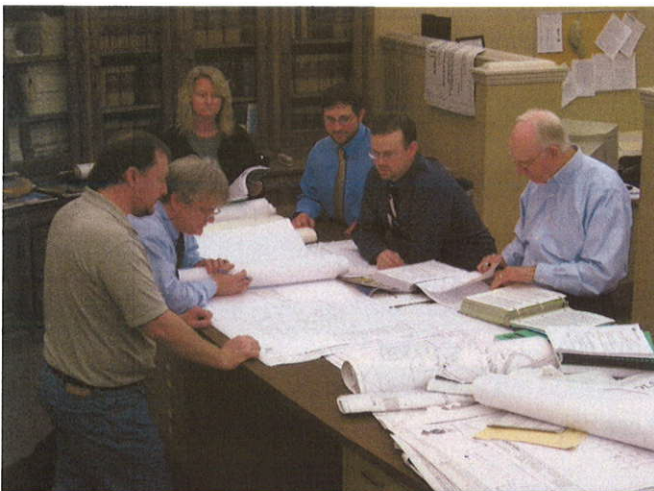
As the schematic/concept plans are developed, the Project Manager typically presents the plans for review and comments to a plan group depending on the nature of the work; e.g. engineers commenting on the engineering and architects critiquing the architecture. Once a consensus is reached, the plans advance in the process.

Prior to the completion of each phase, a set of project documents is issued to each discipline and consultant for coordination, cross-checking and review. The following items are checked at that time:

- Drawings and specifications for program compliance.
- Drawings and specifications for internal coordination.
- Cost effectiveness of the design.
- Drawing accuracy.
- Compliance with appropriate codes and client standards.

After coordination check corrections are completed, the project architect reviews the documents and compares the completed documents with check prints to verify that corrections have been made in accordance with the project design criteria. A final review is made by the principal-in-charge.

During the subsequent phases of design, all items are checked by persons other than those performing the daily design work in order to provide fresh insight. Prior to the final release of the documents, revisions are checked by the project manager and appropriately referenced on the drawings. Copies of the final documents are distributed to the client and consultants for final review and approval. Comments are incorporated into the documents prior to issuance for bidding and construction.



Bid documents are issued after a final check to verify that all bid packages have current revisions included and are appropriately identified. Bid sets are numbered and registered to bidders so that each bidder may be kept informed of clarifications and addenda.

During the construction, the processing of shop drawings and submittals is controlled and monitored by the project manager. The standard turnaround for the receipt, logging, review and return of submittals is 10 working days. Complicated or specialized submittals may require additional time. Urgent items can often be expedited to satisfy the construction schedule.



Fast-Tracking



Cabela's Eastern Distribution Center

Throughout the years we have worked on many “fast-track” projects such as the Cabela's Eastern Distribution Center in Wheeling, WV, Maclin Hall Dormitory at West Virginia University's Institute of Technology in Montgomery, WV, as well as TeleTech National Call Center in Moundsville, WV. We achieved success by maintaining time and cost management, quality control and excellent communication amongst the client and contractors.

The **Cabela's Eastern Distribution Center** is a commercial warehouse that was completed in two phases. The building measures **1.2 million SF**, and is one of the largest buildings in the State of West Virginia. Included with the **\$40 million** structure are 300 trailer parking spaces, 750 employee parking spaces and storage area.



TeleTech National Call Center

In 2006, we designed an extensive (**\$5M**) renovation of **Maclin Hall**, a historic **53,900 SF** dormitory building on the campus of WV Tech, **in less than a month**. The project included redesigning the shared areas, new finishes, new roof, and restoration of the exterior. We also replaced the entire HVAC, lighting, fire protection, data systems and renovated the shared restrooms.



West Virginia University's Institute of Technology - Maclin Hall Dormitory

When **TeleTech** needed to move into a new call center in **6 months**; McKinley & Associates got the call. Teletch is a **\$10 million** project, and included in the structure are the following: sophisticated computer and communication systems with over 450 stations, 500 employee parking spaces, cafeteria, office and training rooms along with calling areas. The **58,000 SF** building came in on time, on schedule, and on budget, **and it became a prototype for all of the company's buildings**.

We are confident that our design team can meet your timeline.



McKINLEY & ASSOCIATES
ARCHITECTS • ENGINEERS • INTERIOR DESIGN

Construction Administration & On-Site Representation

Observe the Construction Progress

Liaison between the Owner, Contractor, and Architect

Responsible for All Construction Meetings and Minutes

Monitor the Construction Schedule

Ensure that the Contractor is Following the Construction Documents

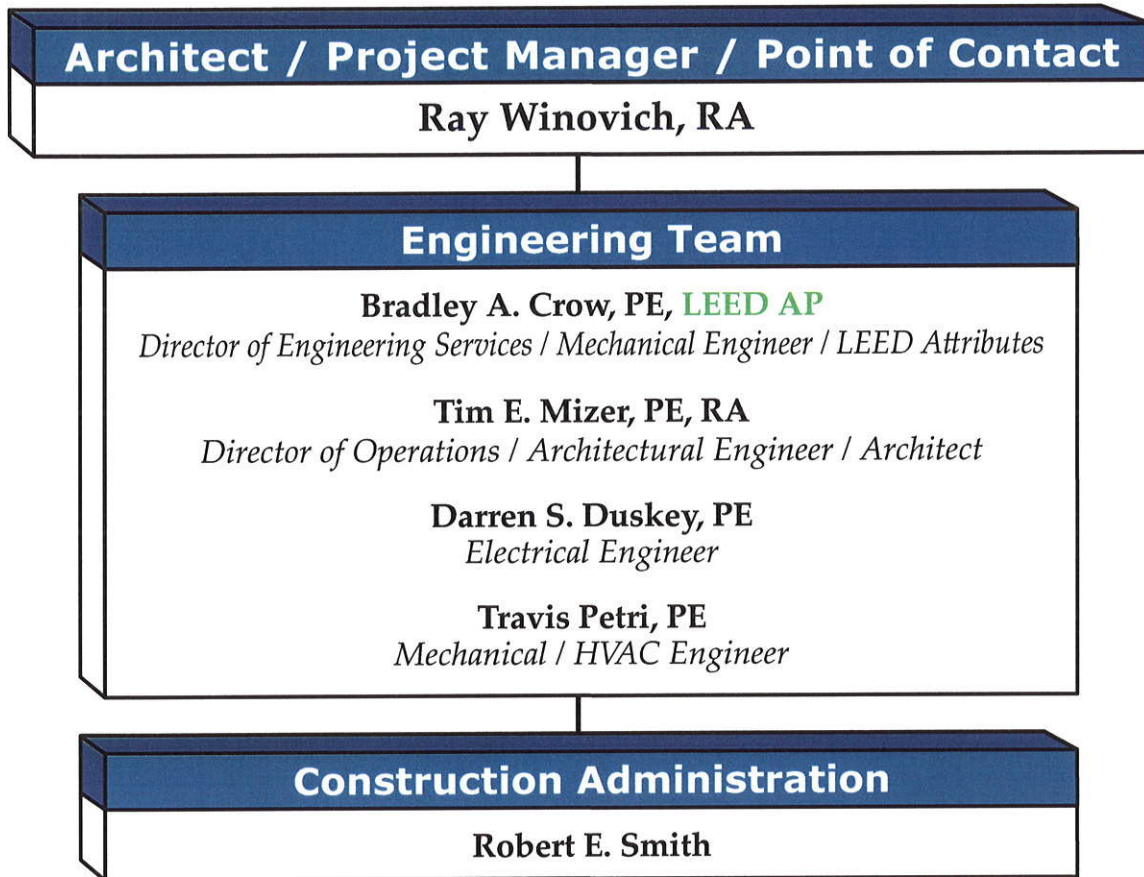
Verify Pay Application and Change Orders

**Typically On-Site Once Every Two Weeks
(Provide Additional On-Site Representation if Requested)**



Our Project Coordinators have an extra responsibility than what most firms' Construction Administrators have; our Project Coordinators are a part of the design process from **Day 1** (they are not thrown into the project only when construction starts; they are here from the beginning), so they know the ins-and-outs of the project. Our Project Coordinators have an important role as being the **liaison between the Owner, Contractor, and Architect**. The primary objective of the Project Coordination services is to ensure completion of work the way the client wants it - **as scheduled and as budgeted**. Our Project Coordinators evaluate the quality of the work to verify that it meets the level required by clients; in addition, they monitor the contractor's progress to ensure that they are following the Construction Documents. They observe the construction progress, are responsible for all construction meetings and minutes, and they verify pay application and change orders. The Project Coordinator is typically on-site once every two weeks, but we can provide additional on-site representation if requested.

Design Team Flow Chart



McKinley & Associates is willing to dedicate more Architects, Engineers, Interior Designers, LEED Accredited Professionals, and Construction Administrators if they are needed.

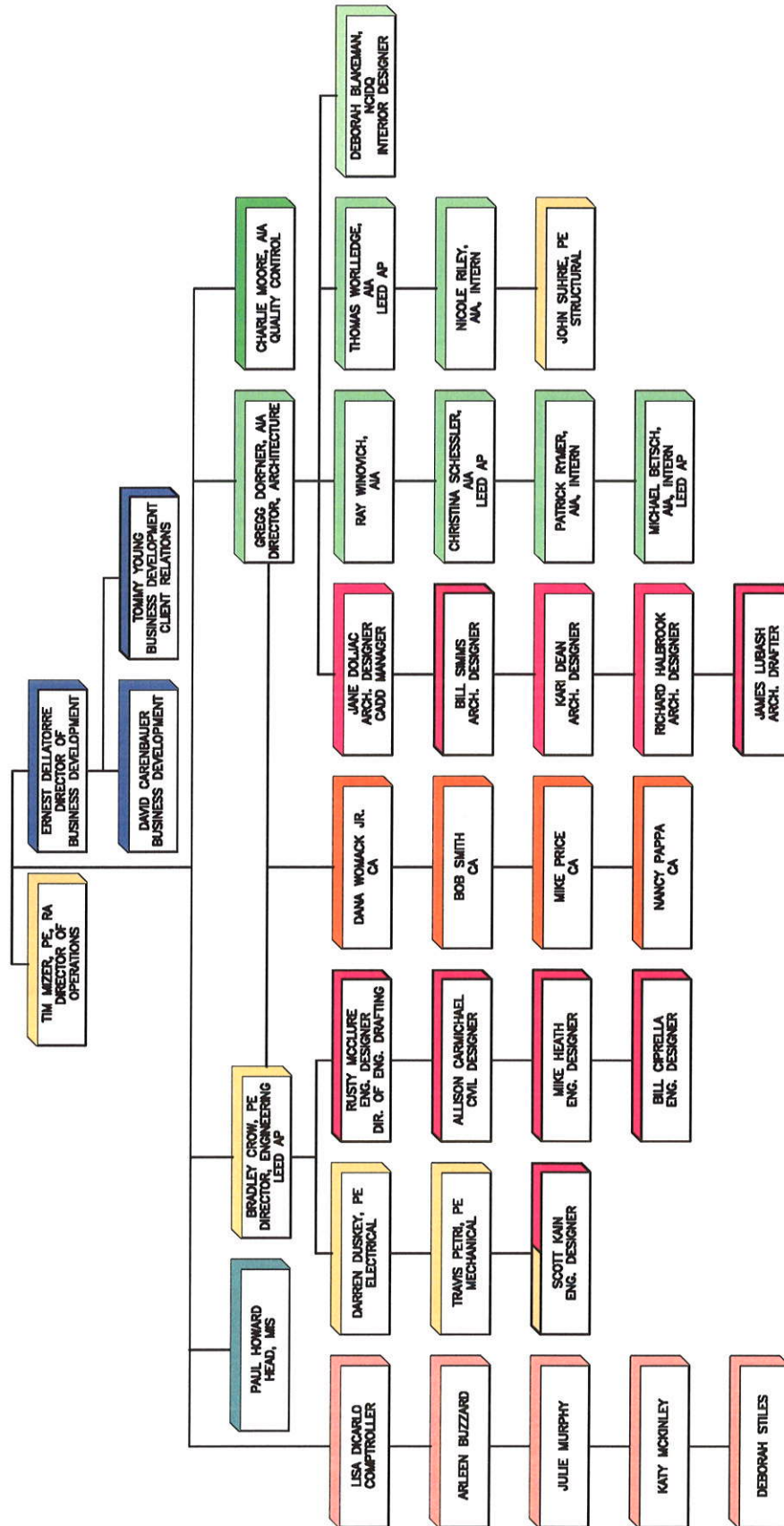
There will also be architectural and engineering designers assigned to this project, some of which are not listed on this sheet, but are seen in the Organizational Chart in the following page.

Organization Chart

REVISED 1-24-2012



ORGANIZATION CHART



McKINLEY & ASSOCIATES
ARCHITECTS • ENGINEERS • INTERIOR DESIGN

Architect Ray Winovich, RA

EDUCATION:

Carnegie-Mellon University
Bachelor of Architecture - 1979

PROFESSIONAL AFFILIATIONS AND REGISTRATIONS:

Registered Architect in:

Pennsylvania (1984)
Washington (1997)
Michigan (2000)
Indiana (2000)
New York (2003)
Massachusetts (2003)
West Virginia (2005)
Ohio (2007)

NCARB Certificate - 2003

PROFESSIONAL EMPLOYMENT:

McKinley & Associates
Wheeling, WV (2005 to present)

Industrial Design Corp.
Pittsburgh, PA (2000-2005)

SSOE, Inc
Bellevue, WA and Toledo, OH (1997-2000)

R.T. Patterson Co. Engineers
Pittsburgh, PA (1994-1997)

Self employed (1993-1994)

Industrial Design Corp.
Pittsburgh, PA (1990-1992)

SUMMARY OF EXPERIENCE:

Mr. Winovich is a Registered Architect who has extensive experience in renovation projects of various sizes and use groups. This includes small industrial laboratory operations, as well as larger high-technology micro-electronics cleanroom retrofits for clients such as Micron, Intel and IBM. These facilities are very similar in construction type to university laboratories. He has experience internationally, such as being the lead architect of a 150,000 SF, Class-10 clean-room lab for Intel in Leixlip, Ireland. Ray has experience as the lead architect of numerous K-12 projects. Most recently, he has concluded the design, which is now under construction, of the J.B. Chambers Performing Arts Center in Wheeling, WV.

NOTABLE PROFESSIONAL EXPERIENCES:

Project Architect

Cabela's Eastern Distribution Center

New 50,000 SF classroom, building and overall campus renovation of Parkersburg South High School, Wood County, WV

New 1,200-seat J.B. Chambers Performing Arts Center at Wheeling Park High School for Ohio County Schools

Dr Ganzer Office Building - Renovation and expansion of a 15,000 SF medical office facility in Wheeling, WV

Brooke County Schools - Follansbee Middle School renovations

Community Action Southwest - Southwest Senior Center

Bayer Federal Credit Union

Intel Corp., Leixlip Ireland / 150,000 SF Class-10 clean room, manufacturing facility*

Intel Corp. FAB 17, Hudson MA / Renovations to existing clean-room manufacturing facility*

Van Waters & Rogers Inc, / 100,000 SF Chemical Storage and Distribution Center in Morristown, PA*

American Video Class Company / Joint venture of Sony and Corning Corp. Design-Build \$200 million facility, 500,000 SF Plant for TV picture tube production, with detached admin-office building, cafeteria and locker rooms. This facility is located in New Stanton, PA*

Armco Steel Co. / New Continuous casting facility at an existing steel mill site, Mansfield, OH*

IBM Facility expansion, East Fishkill, NY*

Digital Equipment Corp., Hudson MA / 500,000 SF Manufacturing facility with Class 1 clean rooms*

**previous work experience with a firm other than McKinley & Associates*



McKINLEY & ASSOCIATES
ARCHITECTS • ENGINEERS • INTERIOR DESIGN

Mechanical Engineer / LEED Accredited Professional Bradley A. Crow, PE, LEED AP

Director of Engineering Services



EDUCATION:

West Virginia Institute of Technology
B.S. Mechanical Engineering

PROFESSIONAL AFFILIATIONS AND REGISTRATIONS:

Registered Engineering in:

West Virginia
Maryland
Pennsylvania

LEED® Accredited Professional

PROFESSIONAL EMPLOYMENT:

McKinley & Associates
Mechanical Engineer
Wheeling, WV (2005 to present)

BDA Engineering
Design Engineer
Pittsburgh, PA (2001–2005)

Tri-State Roofing
Sales Engineer
Davisville, West Virginia (2000–2001)

Ravenswood Polymers
Site Engineer
Ravenswood, West Virginia (1997–2000)

SUMMARY OF EXPERIENCE:

Mr. Crow is both a Professional Engineer and a **LEED Accredited Professional**, and has recently been appointed Director of Engineering Services at McKinley & Associates. His broad experience gives him the ability to understand and coordinate the various MEP systems within a buildings envelope in both new design and existing structures. He has headed numerous MEP projects for various building systems ranging from educational, commercial offices, retail, dormitories, and medical facilities. He has recently designed a Chilled Beam HVAC System for the Cameron Middle/High School Facility which will be the first of its kind in West Virginia.

NOTABLE PROFESSIONAL EXPERIENCES:

Mechanical Engineer

West Virginia Army National Guard - Multi-Purpose Building at Camp Dawson

West Virginia Army National Guard - Mountaineer Challenge Academy at Camp Dawson

USPS - Charleston Processing and Distribution Center

USPS - Martinsburg Processing and Distribution Center

West Virginia State Police Academy - multiple buildings

West Virginia State Police - New Logan Detachment

West Virginia State Police - Jackson County Detachment

West Virginia State Police - Kanawha County Troop 4 Headquarters

West Virginia State Office Building in Logan, WV (LEED registered)

WVU State Fire Training Academy / Jackson's Mill

Wheeling Island Fire Station

Hancock County Schools - Oak Glen High School

Hancock County Schools - Weir Middle School / High School

Panhandle Cleaning & Restoration warehouse and office building

Cabela's Eastern Distribution Center (1.2 million SF)

Charleston Area Alliance Building - Warehouse to Office Buildout

Bennett Square Office Building

Dr Ganzer Office Building

Marshall County Schools - Hilltop Elementary (**LEED Certified**)

Marshall County Schools - Cameron Middle/High School (LEED registered project)

Wood County Schools (\$63+ million renovations)

WVU Colson Hall (office and classroom building)

WVU Institute of Technology - Maclin Hall Dormitory

Architectural Engineer / Architect / Quality Control

Tim E. Mizer, PE, RA

Director of Operations

EDUCATION:

Kansas State University
B.S. Architectural Engineering - 1983

University of Cincinnati
Architecture

PROFESSIONAL AFFILIATIONS AND REGISTRATIONS:

Registered Engineering in:
West Virginia
Ohio

Registered Architect in:
Ohio

PROFESSIONAL EMPLOYMENT:

McKinley & Associates
Architect / Engineer
Wheeling, WV (1995 to present)

M.C.C. Engineering
Director of Design
Columbus, Ohio (1988-1995)

Schooley Caldwell and Associates
Electrical & Mechanical Design
Columbus, Ohio (1986-1988)

Mizer Design
Free Lance Architectural Engineering Design
Columbus, Ohio (1985-1986)

Envirotek, Inc.
Drafting and Electrical & Mechanical Design
Raleigh, NC (1984-1985)

SUMMARY OF EXPERIENCE:

A very talented and unique professional who is registered both in engineering and architecture. Mizer's background as an Architectural Engineer has provided him with a total understanding of the engineering components which provides a cohesiveness on all of his projects. Being also a Registered Architect, he understands designing to allow for the engineering disciplines, including his responsibility of project management and design. Mr. Mizer is the Head of Operations for the company.

NOTABLE PROFESSIONAL EXPERIENCES:

West Virginia Army National Guard - Mountaineer Challenge Academy at Camp Dawson in Kingwood, WV

West Virginia Army National Guard - Multi-Purpose Building at Camp Dawson in Kingwood, WV

USPS - designed over 100 Post Offices throughout West Virginia for ADA compliance

West Virginia State Police - renovations and new detachments
Also surveyed, reviewed, projected, budgeted, and documented 72 police facilities statewide

WVU State Fire Training Academy

West Virginia State Building in Logan, WV (LEED Registered)

Panhandle Cleaning & Restoration warehouse and office building

WVU Institute of Technology - Maclin Hall Dormitory

WVU Colson Hall

Marshall County School Bond Project (\$38 million)

Hancock County School Bond Project (\$56 million)

Wood County School Bond Project (\$63 million)

Grant County Schools / multiple projects

Hancock County Middle School-new building/site

Marshall County Schools - Hilltop Elementary (LEED Certified)

Marshall County Schools - Cameron Middle/High School (LEED Registered project)

Barnesville (OH) Schools - new buildings

Cabela's Eastern Distribution Center

Wheeling Island Casino - various projects

Independence Hall



Electrical Engineer Darren S. Duskey, PE

EDUCATION:

The Ohio State University
B.S. Electrical Engineer - 1993

Marshall University
Graduate courses in Engineering

PROFESSIONAL AFFILIATIONS AND REGISTRATIONS:

Registered Professional Engineer in:
West Virginia
Ohio
Pennsylvania

PROFESSIONAL EMPLOYMENT:

McKinley & Associates
Wheeling, WV (2002 to present)

Pickering Associates
Parkersburg, WV (1997-2002)

Magnetic Specialty, Inc.
Marietta, OH (1995-1997)

Inland Products, Inc.
Columbus, OH (1993-1995)

SUMMARY OF EXPERIENCE:

Mr. Duskey has over 15 years of experience in the industrial, commercial, institutional, and educational markets with projects ranging from State Police detachment offices, electrical design of schools, health care facilities, large and small industrial projects, and commercial properties. He has extensive knowledge and experience with the National Electrical Code, state building codes, building industry standards and practices, and has demonstrated the ability to design qualitative and economic solutions to a myriad of challenges.

NOTABLE PROFESSIONAL EXPERIENCES:

Electrical Engineer

West Virginia Army National Guard - Mountaineer Challenge Academy at Camp Dawson in Kingwood, WV

West Virginia Army National Guard - Multi-Purpose Building at Camp Dawson in Kingwood, WV

United States Postal Service - statewide post offices

WVSP Headquarters (*Upgrade electrical service*)

WVSP detachment in Berkeley County (*Upgrade electrical service, renovations*)

West Virginia State Building in Logan, WV (LEED Registered)

West Virginia State Building in Weirton, WV

WVU State Fire Training Academy in Jackson's Mill, WV

Hancock County Schools Bond Project

Panhandle Cleaning & Restoration warehouse and office building

WVU Institute of Technology - Maclin Hall Dormitory (*Upgrade electrical service, renovations*)

West Virginia University - Colson Hall (*Upgrade electrical service, including medium voltage distribution, renovations*)

West Virginia Northern Community College - The Education Center (*Upgrade electrical service, renovations*)

Marshall County Schools - Hilltop Elementary (LEED Certified)

Marshall County Schools - Cameron Middle/High School (LEED Registered project)

Chapmanville Regional High School - Logan County Schools (*New school service, electrical design*)

Bennett Square Office Building

Dr Ganzer Office Building

Cabela's Eastern Distribution Center [*New large (~1,200,000 SF) distribution center services, electrical design*]



Mechanical / HVAC Engineer

Travis Petri, PE

EDUCATION:

West Virginia University
B.S. in Mechanical Engineering - 2003

PROFESSIONAL AFFILIATIONS AND REGISTRATIONS:

Registered Professional Engineer in:
West Virginia

PROFESSIONAL EMPLOYMENT:

McKinley & Associates
Project Engineer
Wheeling, WV (2006 to present)

Petri Detailing
Owner/Sole Proprietor
Wheeling, WV (2000 - 2006)

Mountaineer Gas Company
Engineering Internship
Wheeling, WV (1999)

SUMMARY OF EXPERIENCE:

Mr. Petri is skilled in the complete design and project management of mechanical systems, whether it is renovations or new construction. He has worked on several LEED projects, performed multiple energy studies, and can provide recommendations to building owners to provide energy savings.

NOTABLE PROFESSIONAL EXPERIENCES:

West Virginia Army National Guard - Mountaineer Challenge Academy at Camp Dawson

United States Postal Service - multiple projects

West Virginia State Police - Logan Detachment

WV State Police Academy - Renovations to Buildings A, B, and C; New Building D (Shooting Range Control Center)

WV State Police Academy Multi-Purpose Building

West Virginia University - University Police Building

First Choice America Federal Credit Union / Weirton, WV

Logan State Office Building (LEED Registered project)

West Virginia Independence Hall

Marshall County Schools - Hilltop Elementary (LEED Certified)

Marshall County Schools - Cameron Middle School / High School (LEED Registered project)

Southern WV Community & Technical College - Wyoming/McDowell campus

Southern WV Community & Technical College - Williamson campus

Wood County Schools - Parkersburg High School

Wood County Schools - Parkersburg South High School

Ohio County Schools - Bridge Street Middle School

Marshall County Schools - Washington Lands

West Virginia Northern Community College - B. & O. Building

Braxton Co Senior Center

Hancock County Schools - A.T. Allison Elementary

Hancock County Schools - JDR Career Center

Hancock County Schools - New Manchester Elementary

Hancock County Schools - Oak Glen High School

Hancock County Schools - Weir Middle School

Hancock County Schools - Weir High School



Construction Administrator (Project Coordinator)

Robert E. Smith

EDUCATION:

University of Pittsburgh
M.S. Industrial Engineering - 1989

United States Air Force Academy
B.S. Behavioral Science /
Human Factors Engineering - 1983

PROFESSIONAL AFFILIATIONS AND REGISTRATIONS:

President:

Mingo Business Association (2007 to present)

Commander:

American Legion Post 351 (2008 to present)

Board Member:

Indian Creek School District (elected in 2009)

PROFESSIONAL EMPLOYMENT:

McKinley & Associates
Project Coordinator
Wheeling, WV (2009 to present)

Jefferson County Regional Planning Commission
Regional Planner
Steubenville, OH (2008-2009)

Edison Local School District
Director of Operation (1999-2008)
Transportation Supervisor (1998-1999)
Hammondsville, OH

MILITARY SERVICE:

Wright Patterson Air Force Base - Dayton, OH
Chief B-2, Block 20 Field Retrofit, \$300 million
B-2 Systems Program Office (1994-1996)
Team Leader, Process Improvement Technology
Armstrong Laboratory (1989-1994)

Randolph Air Force Base - San Antonio, TX
Chief, Test Construction Section
Occupational Measurement Center (1987-1988)
Quality Control Psychologist
Occupational Measurement Center (1985-1987)
Supervisor of Test Construction Team
Occupational Measurement Center (1983-1985)

SUMMARY OF EXPERIENCE:

Mr. Smith is a self confident, articulate and highly motivated individual with superior interpersonal and teamwork skills. He has a plethora of experience in mid to upper level personnel management, advanced information systems integration, training, acquisition, contract management, transportation and maintenance, and quality control. He has 23 years of direct supervisory experience, as well as 13 years of documented success as an Air Force Officer.

NOTABLE PROFESSIONAL EXPERIENCES:

Construction Administration / Project Coordination for:

Follansbee City Building renovations
Cabela's Eastern Distribution Center / Triadelphia, WV
Brooke County Schools - Follansbee Middle
Grant County Schools - Maysville HVAC/Windows
Grant County Schools - Union Locker Room
Hancock County Schools - A.T. Allison Elementary
Hancock County Schools - JDR Career Center
Hancock County Schools - New Manchester Elementary
Hancock County Schools - Oak Glen High HVAC and renovations
Hancock County Schools - Oak Glen High Field of Dreams
Hancock County Schools - Oak Glen High Multi-Sports Complex
Hancock County Schools - Oak Glen High Wrestling Room
Hancock County Schools - Weir High Multi-Sports Complex
Hancock County Schools - Weir MS/HS HVAC
Hancock County Schools - NEW Weirton Elementary
Marshall County Schools - NEW Cameron Middle School / High School (LEED Registered)
Steel Valley Regional Transit Authority / Steubenville, OH
Lincoln National Bank Building historic preservation / Avella, PA

Director of Operations

Responsible for the daily transportation of all district students (over 2500) which included 29 bus routes traveling over 3500 miles per day. Also responsible for all maintenance in 7 buildings. Managed a budget of over \$1.5 million.

Transportation Supervisor

Responsible for all transportation in the district, while also supervising 29 regular bus drivers, 10 substitutes, and 3 full-time mechanics.



Kingwood, West Virginia

WV Army National Guard

54,800 SF approx.

\$12.7 million

Assemblage Architects

McKinley & Associates



The residents require classrooms, an exercise area and a full service kitchen with dining facility; these spaces will house 160 young adults living at Camp Dawson as part of the Challenge Academy. The gymnasium will accommodate physical activity, weight training and serves as the central hub of the complex. Drill exercises and formations as well as graduation ceremonies will be held here.



Multi-Purpose Building WV ARMY NATIONAL GUARD

Kingwood, West Virginia

Owner

WV Army National Guard

Size

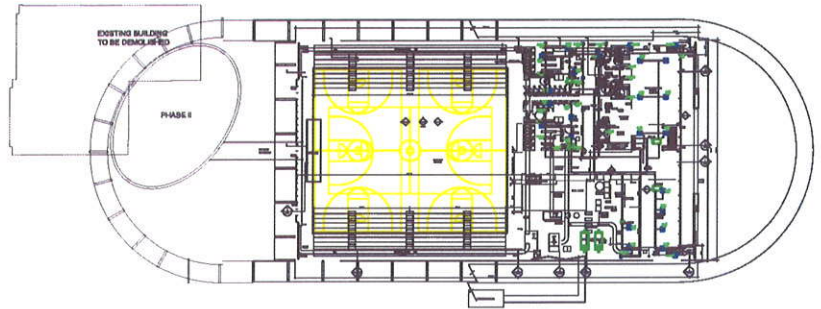
55,000 SF approx.

Project Architects

Assemblage Architects

Project Engineers

McKinley & Associates



The mission of the Multi-Purpose Building at Camp Dawson is a permanent multi-use masonry steel-framed structure with supporting facilities for military units of the West Virginia Army National Guard. The facility is located in Kingwood, Preston County, WV. The building's design was completed in 2009.

The facility houses offices, a conference room, a locker room, shower facilities, a physical fitness area, and a large open space (gymnasium). The facility and grounds include parking, attached and detached storage, landscaping, security lighting and fencing, and a unique entry. This project was designed with energy recovery systems.



UNITED STATES POSTAL SERVICE

Appalachian Area

Owner

United States Postal Service

Construction Cost

These projects were completed under a multi-year open-ended agreement

Project Architects-Engineers

McKinley & Associates

McKinley & Associates is currently under our **third consecutive** multiple year open-ended contract with the United States Postal Service in West Virginia, and we provide design services all over the state. Our newest contract, which was awarded on **December 13, 2011**, is an Indefinite Quantity Contract for Architect / Engineering Services (**Contract 360070-11-J-0012**) for the **Appalachian Area**, which includes **the State of West Virginia (55 counties), 34 counties and 9 independent cities in Southwest Virginia, as well as all of the 95 counties in the State of Tennessee**. We have designed **over 100 Post Offices throughout West Virginia for ADA compliance**. In addition, we have designed **over 20 other Post Office facilities and engineering projects** for the USPS, **both new and addition / rehabilitation**, in numerous cities within West Virginia. The following examples are chosen to exhibit an assortment of projects we have successfully completed for the United States Postal Service:

1980s

Barboursville Finance Station
Clarksburg Finance Station Tenancy Upgrade
Clarksburg Sprinkler Drawings

1990s

Clarksburg
Postal Retail Store
Barboursville Finance Station Postal Retail store
Clarksburg Finance Station Window Replacement
Main Office Hedgesville Site Access Improvement
Clarksburg Finance Station HVAC Retrofit
Parkersburg Main Office Renovations
Parkersburg Main Office Alterations
Cheraw
Morgantown
Clarksburg Eastpointe
Newburg
Grafton
Harpers Ferry
Fort Ashby
Charleston Wall Unit Study
Charleston Roof Study
Clarksburg Finance Station Canopy Study
Clarksburg Finance Station Handicap Ramp
Clarksburg Eastpointe Structural
Clarksburg Eastpointe Parking
Clarksburg Eastpointe Loading Docks
South Ridge Roof
South Ridge Wall
Dellslow
Charleston Structural Monitoring

2000s

Bridgeport
Huntington Design & CA
Lynchburg VA
Clarksburg Finance Station Chiller
Morgantown
New Martinsville Roof
New Martinsville Roof Invest
Keyser ABC Inspection
Star City ABC Inspection
Terra Alta Handicapped Modification
Charles Town Roofing Restoration
Weston Electrical
Dille Electrical
Keyser Electrical
Romney Electrical
St. Marys Electrical
Leivasy
Phillipi Roof Replacement
Cabins
Delray
Palestine
New Martinsville Heating
Morgantown Parking Lot Drainage
Paden City
Paden City Design CA
Mannington
Mannington Design CA
Terra Alta
New Martinsville Roof CA
Keyser ADA Handicap Ramp
Clarksburg Eastpointe HVAC Study

2000s (continued)

Clarksburg Eastpointe HVAC CA
Morgantown Retail Store
Shenandoah Junction
Clarksburg Eastpointe Chiller Replacement
Fairmont Access Control System
Charleston Chiller Study
Donnally St Struct Inv
Charleston P&DC
Martinsburg P&DC Controls
Huntington P&DC
Grafton P&DC
Charleston Centre Way Elect Study
Charleston Centre Way HVAC Study
Clarksburg West Wall
Grafton HVAC Replacement
Williamson Study
New Cumberland Structural Report



Open-Ended IQ Contract 362575-09-J-0232

UNITED STATES POSTAL SERVICE

Erie/Pittsburgh Area

Owner

United States Postal Service

Construction Cost

These projects were completed under a multi-year open-ended agreement

Project Architects-Engineers

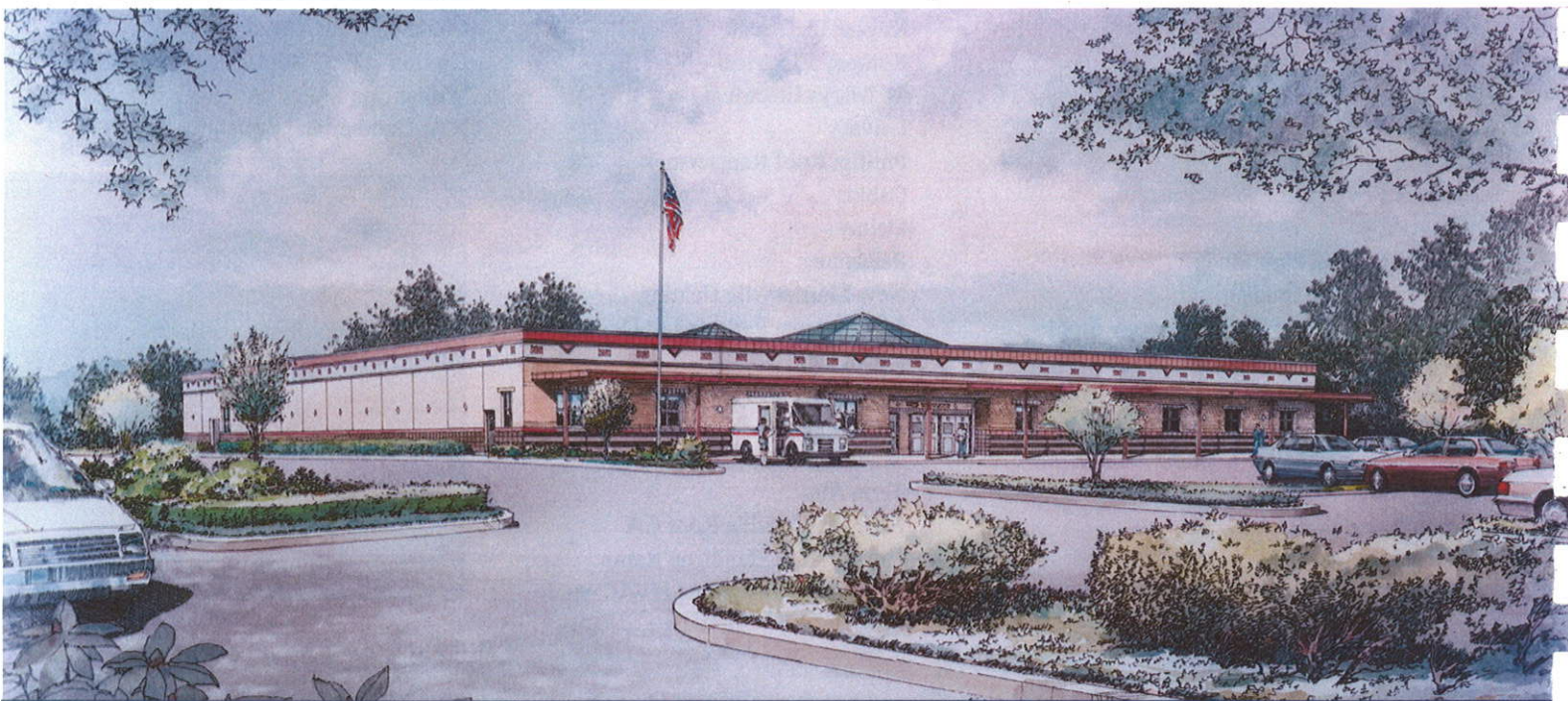
McKinley & Associates



McKinley & Associates has a multiple year open-end agreement with the United States Postal Service for the Erie/Pittsburgh District in **Pennsylvania (Contract 362575-09-J-0232 - Indefinite Quantity Contract for Architect and Engineering Services in the Erie/Pittsburgh Area)**. A few of our newest projects are in Altoona, Coraopolis, Corry, Green Tree, Monogahela, Washington, and Waynesburg.

For the Washington project, we were requested to perform a building evaluation of the existing 2-story postal facility. As a result of the recommendations from the report, we replaced 5 Air Handling Units and a chiller, and installed new DDC Controls throughout.

For the Altoona project, we were requested to perform a building evaluation of the existing 3-story postal facility. Our evaluation recommended that the Air Handling Units be replaced along with an addition of a DDC Control System. In addition to the HVAC, work included the replacement of 102 windows.



McKINLEY & ASSOCIATES
ARCHITECTS • ENGINEERS • INTERIOR DESIGN

Open-Ended Contracts

WEST VIRGINIA STATE POLICE

West Virginia - Statewide

Owner

West Virginia State Police

Construction Cost

These projects were completed under 3 multi-year open-ended agreements

Project Architects-Engineers

McKinley & Associates

For over the past 15 years, McKinley & Associates has been honored to have been selected for **multiple** West Virginia State Police **open-ended contracts** for all architectural and engineering services throughout West Virginia.

McKinley & Associates have completed numerous **renovations** as well as **additions** on police detachments throughout the State, such as in Clarksburg, Franklin, Jackson County, Lewisburg, Moundsville, and Romney to name a few. Moreover, we also have completed design services on multiple **new detachments** in Berkeley, Logan, Morgantown, Rainelle, and Wheeling, West Virginia to name a few. Various detachments have E911 Centers, such as in Doddridge, Franklin and Romney. **Many have a DMV department, which issues identification cards/licenses.**

McKinley & Associates is proud to showcase continuous work for the West Virginia State Police throughout our region, and we are pleased to say that we have also surveyed, reviewed, projected, budgeted, and documented **72 police facilities** throughout the state.



The \$1.85 million **detachment** in **Morgantown, West Virginia** includes the **DMV, MVI, BCI & regular squad space.**

The following is also found in this two story, 11,721 SF building: Detachment Commander Office, Sergeant Office, District Commander, Squad Room, Processing Room, Evidence Room, Gun Storage Room, 2 Interview Rooms, Conference Room w/ Kitchenette, MVI Office, Garage, Lawn Storage Room, Public areas, 3 Secretary areas, 2 File Room, and more.



Architectural and Engineering design for **new addition and renovations** to the detachment in **Pendleton (Franklin), West Virginia**, which included a **DMV, BCI, 911, & regular squad space.**

The **3,170 SF addition** was for a 911 Center (E911) that included 2 offices, a communications room, a transmitter room, a kitchen and a vestibule.

The **3,840 SF of renovations** included providing security for the secretary, replacing door hardware to more secure hardware, a bunkroom, ADA upgrades, exit and emergency lights, and an emergency generator to name a few.



McKINLEY & ASSOCIATES
ARCHITECTS • ENGINEERS • INTERIOR DESIGN

Open-Ended Contracts (continued)

WEST VIRGINIA STATE POLICE



The \$550,000 detachment in **Jackson County (Ripley), West Virginia** is 2,231 SF. The project consists of a **1,078 square foot** single-story detachment office addition, and a **1,153 square foot** single-story renovation with associated parking areas. The detachment includes an office for the District Sergeant, an office for the Detachment Commander, evidence room, interview room, squad room, day room, kitchen, garage, file room, and more.

The **two-story, 8,420 SF** detachment in **Berkeley County (Martinsburg), West Virginia** consisted of an addition and a renovation. The **4,800 SF** addition included a **DMV**, Detachment Commander office, squad room, processing room, public lobby, 2 secretary areas, and a file room to name a few. The **3,620 SF** renovation included 2 Sergeant offices, evidence room, conference room, interview room, gun storage room, file rooms, and more.

Custom-designed, 6' tall, pre-cast concrete relief of the West Virginia State Police Seal surrounded by "West Virginia State Police." This is located in the east wall.



New detachment in **Wheeling, West Virginia**. The building includes the following departments: **DMV**, **MVI**, **Interstate Patrol**, **Drug Enforcement**, **BCI** & regular squad space.



CABELA'S EASTERN DISTRIBUTION CENTER

Triadelphia, West Virginia

Owner
Cabela's

Size
1.2 million SF (includes phases I & II)

Construction Cost
\$40 million

Project Architects-Engineers
McKinley & Associates

Project Architect
Gregg Dorfner, AIA / Ray Winovich, RA

Contractor
Norwood Construction

Architectural and Engineering design on a new commercial warehouse for **Cabela's Eastern Distribution Center** in Triadelphia, West Virginia, that was completed in two fast-tracked phases. The building measures **1.2 million square feet** (600,000 SF for each of Phase I and Phase II), and is one of the largest buildings in the State of West Virginia. Included in the structure are the following: a 32,670 SF administrative office building, a 12,000 SF employee lunch room, a 14,480 SF maintenance building, hundred of trailer parking spaces, 750 employee parking spaces, 90 loading docks, and a storage area.



McKINLEY & ASSOCIATES
ARCHITECTS • ENGINEERS • INTERIOR DESIGN

Offices and Warehouse

PANHANDLE CLEANING & RESTORATION

Triadelphia, West Virginia

Owner

Panhandle Cleaning & Restoration

Size

32,000 square feet including
the 6,400 SF 2-story mezzanine

Construction Cost

\$3.5 million

Project Architects-Engineers

McKinley & Associates

Project Architect

Christina Schessler, AIA, LEED AP BD+C

Panhandle Cleaning & Restoration invested \$3.5 million in a new **prefabricated metal building**. The exterior measures 130'x200', which includes a 6,400 SF 2-story mezzanine within the structure, providing **32,000 total warehouse square feet**. The exterior walls are finished with masonry infill and metal siding. Interior space varies between 20' - 30' clear of the metal structure. The free-standing masonry area with a conventionally framed platform above it provides an additional storage area enabling the Owner to take advantage of the 2 ½ story clear height along one end of the warehouse. **An additional prefabricated 8,600 SF, 2-story office building** is attached to the warehouse along the high side of the warehouse.

Panhandle provides 24-hour emergency disaster clean-up services and therefore required some special plumbing and mechanical systems: a separate de-ionizing water system, fully exhausted ozone decontamination rooms and electronic equipment drying areas were engineered into the warehouse space.



References

Mr. John Antonetti
United States Postal Service
Eastern FSO / Pittsburgh Domicile
Post Office Box 2000
Warrendale, PA 15095
724/776-6371

Mr. Michael Mace
United States Postal Service
Greensboro FSO Office
Post Office Box 59701
Charleston, WV 22350
304/746-5036

1st Sgt. D.P. Kitzmiller
West Virginia State Police
4124 Kanawha Turnpike
South Charleston, WV 25309
304/746-2136

Mr. Rick Boccetti
Cabela's
1 Cabela's Drive
Sidney, Nebraska 69160
860/290-6251

Mr. Bob Contraguerro, Jr.
Panhandle Cleaning and Restoration
42 38th Street
Wheeling, WV 26003
304/232-2321



West Virginia State Police
725 Jefferson Road
South Charleston, West Virginia 25309-1698
Executive Office

Earl Ray Tomblin
Governor

Colonel C. R. "Jay" Smithers
Superintendent

September 8, 2011

Subject: Reference for McKinley & Associates

To Whom It May Concern:

The West Virginia State Police have had a professional relationship with McKinley & Associates since 1996. Not only do their Architects and Engineers listen to the needs of our law enforcers; they have gone beyond the call of duty to ensure our projects are top quality, run smoothly, and are completed on time.

Sincerely,

A handwritten signature in blue ink that reads "Colonel C.R. 'Jay' Smithers". The signature is stylized and cursive.

Col. C.R. "Jay" Smithers,
Superintendent

Equal Opportunity Employer