

JUNE 12, 2012



UNDER ONE ROOF

TEI offers single source management.

Page #2

REPEAT CLIENTELE

85% of TEI clients have hired us for a second project. Find out why..

Page # 12

THE DREAM TEAM

What makes TEI Unique?

Page # 13



THRASHER
ENGINEERING
RECEIVED

2012 JUN 15 AM 10:11

WV PURCHASING
DIVISION

EXPRESSION OF INTEREST &
STATEMENT OF QUALIFICATIONS
TO PROVIDE PROFESSIONAL ARCHITECTURAL /
ENGINEERING DESIGN SERVICES TO CORRECT VARIOUS
ISSUES AT ST. MARY'S CORRECTIONAL FACILITY

PREPARED FOR THE
WEST VIRGINIA DIVISION OF CORRECTIONS

June 18, 2012

Department of Administration
Purchasing Division
Building 15
2019 Washington Street, East
Charleston, WV 25305-0130

RE: *Expressions of Interest for Professional Architectural Engineering Design Services to Correct Various Issues at the St. Mary's Correctional Center*

To the Members of the Selection Committee:

Thrasher Engineering, Inc. (TEI) appreciates the opportunity to submit our Expression of Interest to the West Virginia Division of Corrections to provide Architectural Engineering Design services for the St. Mary's Correctional Center.

TEI was formed 29 years ago based on our strength of planning and designing water and sanitary sewer systems for public utilities. Throughout our history we have diversified our engineering expertise and have several divisions including site development, field services (materials testing, surveying, GIS, inspection), and architecture. We have the staff, the equipment and the knowledge to successfully address not only the sanitary sewer and storm water issues, but also the settlement issues at Building 80.

TEI will be teaming with Environmental & Geotechnical Engineering Solutions (NGE) for this project to assist with any potential soil investigation involving the building settlement. TEI owns sanitary sewer camera equipment and can provide all the necessary smoke and dye testing a project of this nature you will need. For your project and your needs, no firm statewide has immediate access to those resources, which result in responsiveness and timely completion to your project.

Of course, having the necessary equipment and tools is meaningless unless the professionals operating the equipment and the project managers understand the significance of properly operating the equipment and the information being obtained. Our experience in handling the issues facing the St. Mary's Correctional Center and using this equipment will be critical in identifying the cross connections between the sanitary and storm water lines. Individuals under my supervision such as Donald "Butch" Brown have years of experience dealing with these types of problems. That resource will be at your disposal.

Along with Mr. Brown, the individuals assigned to this project have combined to work on hundreds of projects with similar problems. Doug Forni, PE has experience working in Correctional Facilities across the state. These projects included designing grease traps and muffin monsters similar to those required at the St. Mary's facility. We can assure you our team has the experience and knowledge to address the issues in the most timely and cost effective manner.

We look forward to the opportunity of meeting with you to discuss your project and further demonstrate how Thrasher Engineering, Inc. can meet your current and future needs. We are ready to begin your project *now* with a team that has all the necessary tools to serve you.

Sincerely,

THRASHER ENGINEERING, INC.



JONATHAN CARPENTER, P.E.
Partner / Project Manager / Principal-In-Charge

in this proposal...

2 Executive Summary

3 Successful Projects

Facilities all across WV have benefitted from our single source management approach

12 Repeat Clientele

We invite you to contact them to attest to our client service and technical expertise

14 Your Project Team-Resumes

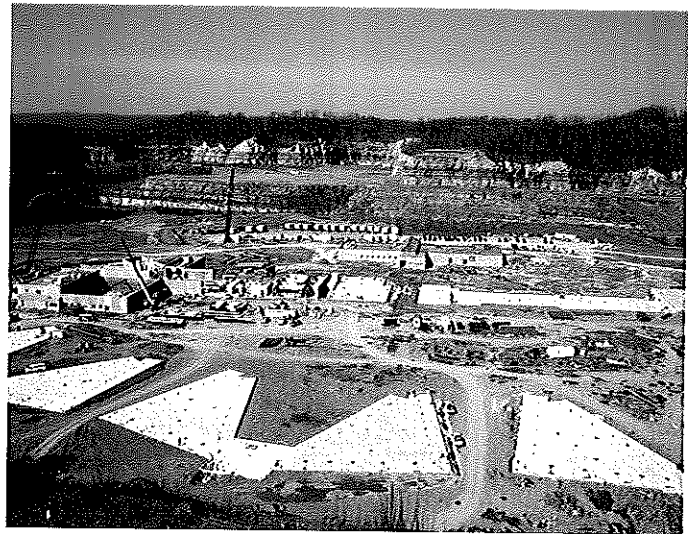
From Planning through Construction, our team has the education, experience and training to get the job done.

24 Integrated Services

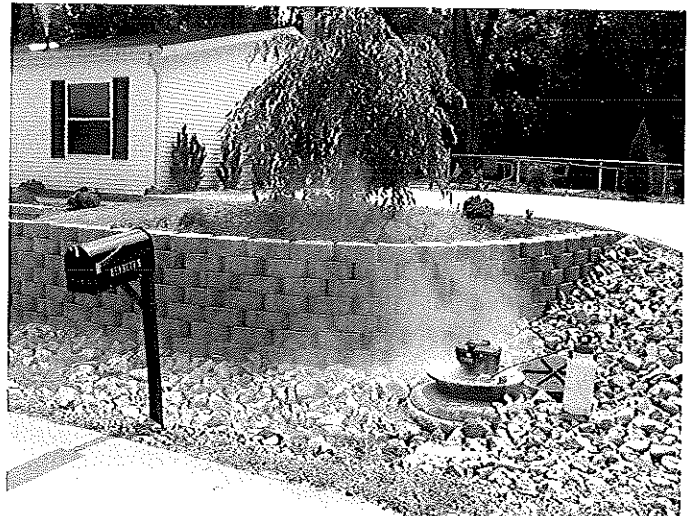
31 About Us

Visit the "out to bid" section of TEI's website - www.thrashereng.com.

When your project goes to bid, contractors throughout the mid-Atlantic area will be informed. We actively pursue bidders, bringing more competition and a better bidding scenario for you.



McDowell County Federal Prison



Smoke before TEI's Pipeline Inspectors corrected the problem.

executive summary

Addressing the specific areas of qualifications requested in the Expression of Interest, the following outlines the expertise demonstrated in detail throughout this submittal.

Simply stated, the Thrasher Engineering, Inc. (TEI) / Environmental & Geotechnical Engineering Solutions (NGE) team offers a higher level of expertise, experience and documented history of client satisfaction for federal projects than other engineering firms. We can bring you the complete range of services ***under single corporate management*** with a solid team committed to the success of the WV Division of Corrections project for St. Mary's Correctional Center.

TEI is a civil engineering consulting firm specializing in public works projects. The majority of our work involves publicly funded water treatment and distribution systems, sewage collection and treatment systems, and industrial and business parks. Over \$600 million in water, sewer, site development, survey and construction management projects have been designed and supervised by the firm in our 29-year history.

Since our formation, the company has grown to a firm of nearly 300 persons. This staff includes 40 engineers, 26 of whom are registered professional engineers while the survey department includes 10 professional surveyors. The TEI team also includes engineer technicians, project designers, CADD operators, construction inspectors and the administrative / office support team.

NGE, LLC is a full-service environmental and geotechnical engineering firm with offices in Pittsburgh, PA and St. Albans, WV. Led by an experienced management team, NGE provides high quality consulting services to a variety of clients in both private industry and government sectors. Established in 2002, NGE is one of the fastest growing engineering consulting firms in the country.

Their staff includes professional engineers, geologists, scientists, construction manager, and foreman with

TEI has completed projects for numerous correctional facilities across the State of West Virginia & Pennsylvania, including USP Canaan, the Federal Correctional Institution (FCI) Gilmer in Glenville, WV and the McDowell County Corrections Welch Facility.

experience in a broad range of technical disciplines. The management team averages over 20 years of experience per person.

NGE is a certified Disadvantaged Business Enterprise (DBE) in West Virginia, Pennsylvania, Ohio, Maryland, and New Jersey. NGE is also certified by the Small Business Administration as an 8(a) Small Disadvantaged Business.

The TEI / NGE team's full and diverse staff has the resources to handle many projects, both large and small, simultaneously. The client base includes Federal and State governmental agencies, cities, towns, county governments, public service districts and to private corporations.

We're There When You Need Us

Performing on-time and on-budget is essential to client satisfaction; our team knows this and performs to meet the client's schedule. Our current workload allows for us to start your project immediately. The St. Mary's Correctional Facilities project will become a priority to us.

Successful Projects, Repeat Clientele

TEI's philosophy of "Successful Projects, Repeat Clientele" is founded on the principle of client satisfaction and repeat business. We do what it takes to assure satisfaction and to ensure project success.



TEI's in-house Pipeline Inspection method includes video camera inspection. Results are available to clients on both VHS and DVD formats—Town of Reedsville

successful projects

City of Bridgeport

GIS MAPPING OF UTILITY SYSTEM /LONG TERM CONTROL PLAN AND WASTEWATER SYSTEM IMPROVEMENTS

Thrasher Engineering has worked continuously during the past 10-plus years with the City of Bridgeport in a multi-phase project to develop and implement a Long Term Control Plan to correct I&I problems and develop maintenance schedules for their wastewater treatment collection and treatment system.

As outlined below, TEI has worked with Bridgeport through numerous projects to improve the sanitary sewer system. In 2003, TEI started the development of a comprehensive sewer map using GIS technology.

Bridgeport serves an area of approximately 3,536 acres. The system has 11 permitted overflows, including the WWTP.

GIS Mapping

TEI provided all survey, mapping and computer based technology to provide the City of Bridgeport with total mapping of the City's Water and Sanitary sewer system. The GIS mapping program for the Sanitary Sewer utility includes the field identification and verification of sanitary sewer lines, pump stations, lift stations, manholes and storm water systems utilizing GPS. TEI performed all field verification utilizing GPS, created the system geo-database utilizing ArcGIS and provided training to the Bridgeport personnel.

Long Term Control Plan and Wastewater Treatment System Improvements

The original sanitary and storm sewer systems were constructed over many decades. Several interconnections exist. Until 1974 both systems discharged directly into the receiving streams. In 1974, a 1.5 mgd wastewater treatment plant and an interceptor system along Simpson Creek, Davisson Run, and Ann's Run were constructed. The City of Bridgeport and the surrounding area quickly outgrew the plant. The City began a series of projects designed to improve both the treatment facilities as well as the collection system to accommodate growth and to

CLIENT: City of Bridgeport, WV

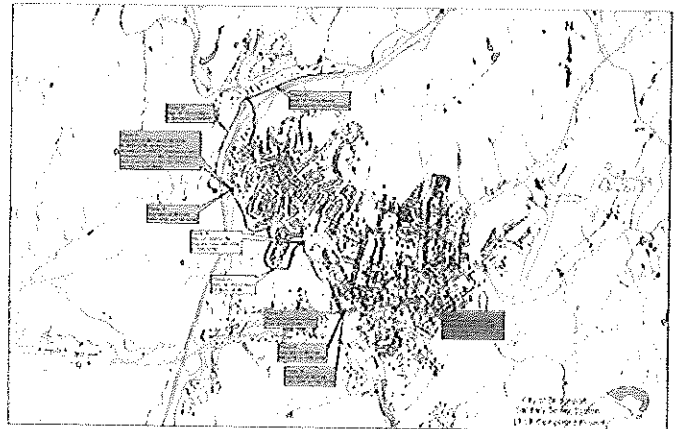
CONTACT: Tom Brown, PE, Director of Public Works & Utilities

ADDRESS: 515 West Main Street

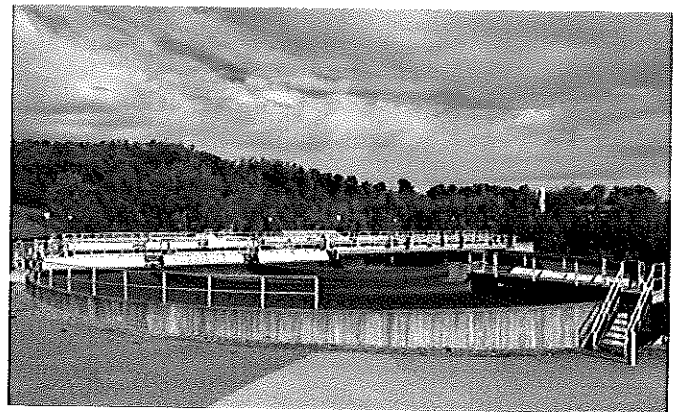
Bridgeport, West Virginia 26330

PHONE: (304) 842-8204

EMAIL: tombrown@bridgeportwv.com



City of Bridgeport GIS Mapping System



Wastewater Treatment Plant



successful projects

address CSO issues. From 1993 to 2010 the City completed seven (7) major projects to address treatment capacity, collection and pump station system improvements, extend sewer service to un-served areas, and existing system separation and inflow and infiltration (I&I) reduction. The projects are summarized below:

In 1993 Phase I began and the City extended sanitary sewer service along the lower part of Barnett Run Road to serve the FBI Complex. The construction included gravity lines, force main and a lift station. The project also addressed various cross-connections and inflow and infiltration problems throughout the City. Phase I separated numerous cross connections repaired various sanitary sewer manholes and associated piping. **Cost of Phase I was approximately \$500,000.**

In 1995, the City of Bridgeport initiated Phase II of the Sanitary Sewer Improvement Project which included construction of a new 3 million gallon per day orbal ditch wastewater treatment plant to handle large amounts of flow due to wet weather conditions. The system is permitted for 3 million gallons per day, but the plant can treat up to 6.25 million gallons per day, on a short-term basis. The plant is compressed of an orbal ditch, a mechanical bar screen, a grit removal system, a three million gallon per day orbal ditch, two (2) 475,000 gallon secondary clarifiers, ultra-violet light disinfection system, 30,500 gallon post aeration tank and two (2) 120,000 gallon aerobic digesters, post lime system, 1.2 meter belt filter press and all necessary appurtenance. This phase also improved six of the main lift stations discharging into the main interceptor line. This project included changing from wet-well, dry well lift stations to large wet-well submersible pump stations. The project also included the construction of approximately 5,140 linear feet of forcemain. The improvements to the lift stations and force mains eliminated repumping of the sewage. The project allowed the pump stations along Simpson Creek to act in a manifold system, greatly increasing the capacity of the system to transport sewage to the wastewater treatment plant. **The cost of Phase II was approximately \$5,000,000.**

In 1996, the city began Phase III of the Sanitary Sewer Improvement Project. This project was separated into three sub-phases. Sub-phase I included the extension of sanitary sewer service along Route 50 East toward the Taylor County line. This included 10,000 linear feet of gravity sanitary sewer main and 6,000 linear feet of force main, including one new sanitary sewer lift station and improvements to a second lift station. Sub-phase II of the project included the extension of sanitary sewer service

further out on the Barnett Run Road. Improvements included 9,600 linear feet of gravity sanitary sewer main and 6,500 linear feet of force main, including a new pump station. Sub-phase III of the project included numerous improvements to the collection system within the City. Approximately 5,000 linear feet of sanitary sewer main, plus 500 linear feet of storm drains and forty-nine manholes were replaced. **The total cost for Phase III improvements was approximately \$2,000,000.**

In 1999, the city began Phase IV of the Sanitary Sewer Improvement Project. Prior to developing construction plans, the city investigated suspected trouble areas using video camera inspections, smoke testing and manhole inspections. The reconstruction project included rebuilding and relocating lift station # 7, which increased its capacity to handle large amounts of flows during wet weather. The project also replaced 8,600 linear feet of mains throughout the City. These improvements were along streams, which in turn, greatly reduced system I & I. **The cost of Phase IV was approximately \$750,000.**

In 2002, the City completed Phase V of the Sanitary Sewer Improvement Project. Approximately 4,000 linear feet of sanitary sewer mains through the city were replaced. The project was a continuation of replacing existing lines and manholes along the streams identified during the investigation process using videotaping, smoke testing and manhole inspections. The lines replaced were increased in size so that more flow could be transported. **The cost of Phase V was approximately \$375,000.**

In 2007, the City completed Phase VI of the sanitary sewer improvement project. Approximately 8,000 LF of forcemain was constructed and the capacity of two lift stations was increased. The result of these measures was a great reduction in frequency and volume of four (4) CSO outlets, located near schools and recreational parks.

In 2010, Phase VII of Bridgeport's plan was completed. This project replaced 3,000 LF of 16" and 20" gravity mains and eliminated a porous sanitary system that had been constructed in and near a creek. This phase also greatly reduced the frequency and volume of combined sewer overflow.

Three additional phases, taking the Plan through 2023 have been identified.



successful projects

Mingo County Public Service District

Wastewater Treatment Plants and Extension Project

Contract 1: Phase 1—Chattaroy Sanitary Sewer System Improvements Project consist of converting existing Chattaroy Primary Wastewater Treatment Plant into a pump station and storm water treatment unit, rehabilitation and repair of the control building, upgrade of the Fairview lift station and force main, and repairs to the creek crossings and manholes.

Contract 2: East Kermit Sanitary Sewer Collection and Treatment System includes a 12,000 gpd wastewater treatment plant and demolition of the existing wastewater treatment plant. Additionally, this project includes: 4,035 LF of gravity sewer line, 3,795 LF of force main, 1,100 LF of lateral sewer line, a duplex grinder pump station, a simplex grinder pump station, and 19 manholes.

Contract 3: Delorme Sanitary Sewer collection System includes: 4,855 LF of gravity sewer line, 1,525 LF of lateral sewer line, 595 LF of force main, a grinder pump station, a duplex pump station, and 26 manholes.

Contract 4: Shadee Woods Subdivision Sanitary Sewer Collection System and Wastewater Treatment Plant Project includes the construction of a 25,000 gpd wastewater treatment plant with influent pump station. This project also includes demolition of the existing treatment plant.

CLIENT: Mingo County Public Service District

CONTACT: JB Heflin, Manager

ADDRESS: 1 Riverside Drive
Naugatuck, WV 25685

PHONE : (304) 235-2244

PROJECT LOCATION: Mingo County,
West Virginia

BID INFORMATION:

Contract 1: \$1,560,638.00

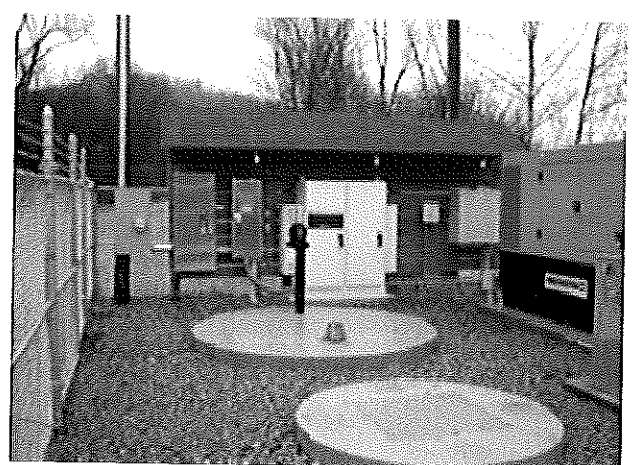
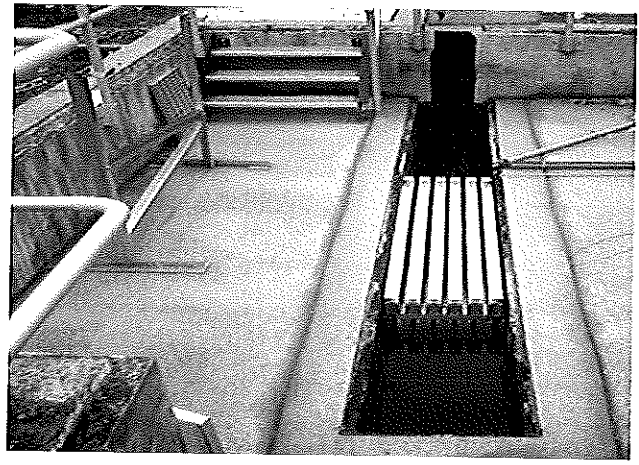
Contract 2: \$ 738,879.00

Contract 3: \$ 619,698.00

Contract 4: \$ 405,000.00

PROJECT COST: \$3,324,215.00

PROJECT STATUS: COMPLETE





○ *successful projects*

Jane Lew Public Service District

Thrasher Engineering's responsibilities for this project have included the investigation of the causes of I&I problems through testing, preparation of an engineering report, development of rehabilitation plans, design, bid documentation and future construction management. TEI also created mapping for the entire Jane Lew PSD sewer system.

Through camera videotaping and smoke and dye testing, it was determined that the I&I overages were not caused by line leaks; the problems resulted from manhole and lateral inflow problems and the deterioration of the lift station. The I&I situation is being addressed through manhole replacement and sealing, and clean out sealing. Future phases of the project include a long-term maintenance schedule, lift station renovations and an upgrade of the wastewater treatment plant.

CLIENT: Jane Lew Public Service District

ADDRESS: PO Box 845
68 Park Avenue
Jane Lew, West Virginia 26378

PHONE : (304) 884-111

PROJECT LOCATION: Lewis County, West Virginia

PROJECT COST: \$4,000,000.00

**FUNDING: WV Department of the Environment
Loan**



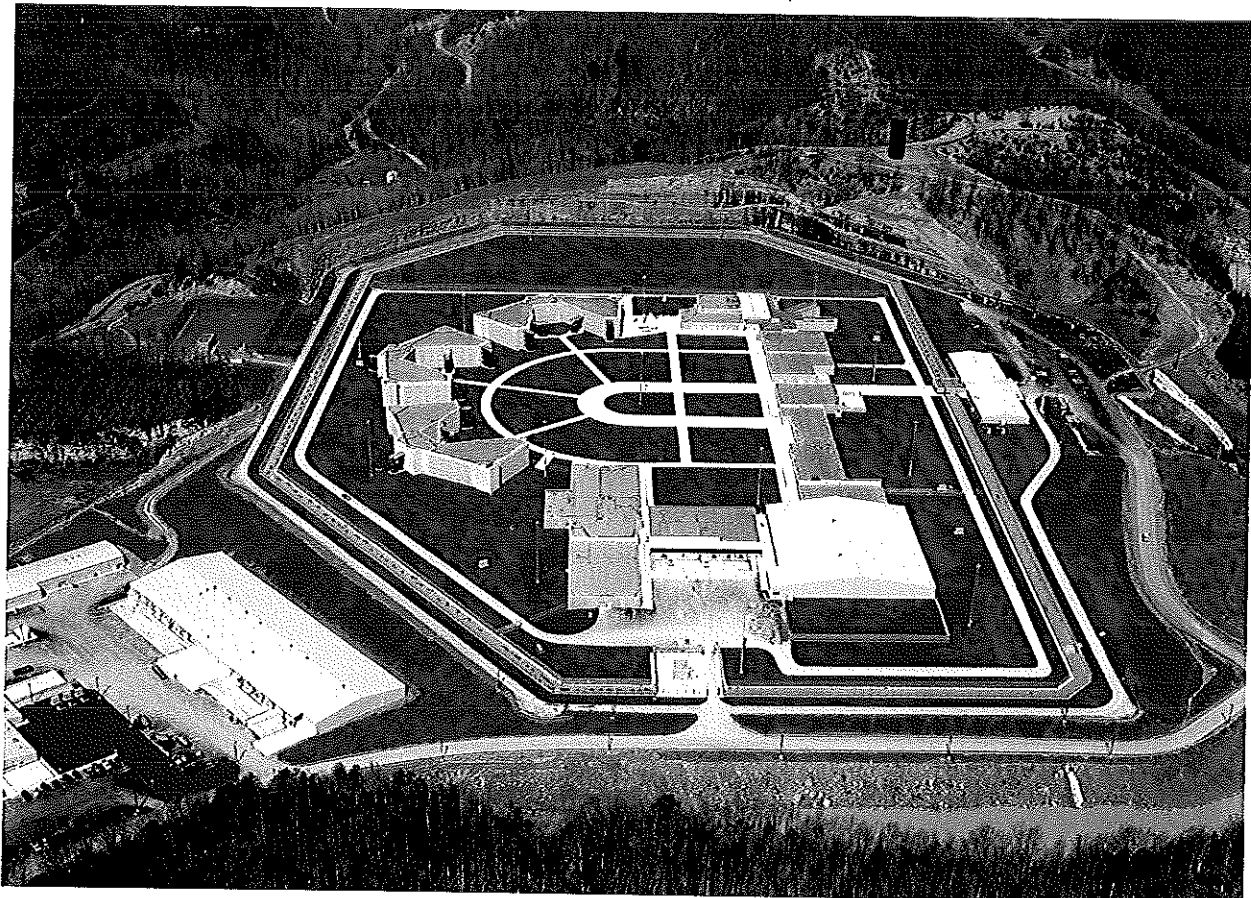


successful projects

Gilmer Federal Correctional Institute / Federal Prison Camp

Thrasher Engineering served as a team member with Bell Construction on a design-build project for the Federal Bureau of Prisons. Thrasher Engineering was responsible for all civil design on the project. Included in this scope was all erosion / sediment control, mass and fine grading, site utilities (sanitary sewer, fire and domestic water, storm sewer system), auger monster facility, grease traps (10,000 and 5,000 gallon) and coordination with buried electrical and communication conduits. Also included was were all site components outside the building footprint, ie. fencelines, roads, walkways, athletic facilities, loading docks and all other components associated with a federal correctional facility. Thrasher Engineering also provided oversight during construction.

CLIENT: Federal Bureau of Prisons
CONTACT: Marie Ferritto
PHONE : (202) 514-6461
PROJECT LOCATION: Gilmer County,
West Virginia
PROJECT COST: \$90,000,000.00
PROJECT STATUS: COMPLETE





successful projects

Canaan U.S. Penitentiary / Federal Prison Camp

Thrasher Engineering served as a team member with Bell Construction on a design-build project for the Federal Bureau of Prisons. Thrasher Engineering was responsible for all civil design on the project. Included in this scope was all erosion / sediment control, mass and fine grading, site utilities (sanitary sewer, fire and domestic water, storm sewer system), auger monster facility, grease traps (10,000 and 5,000 gallon) and coordination with buried electrical and communication conduits. Also included was were all site components outside the building footprint, ie. fencelines, roads, walkways, athletic facilities, loading docks and all other components associated with a federal correctional facility. Thrasher Engineering also provided oversight during construction.

CLIENT: Federal Bureau of Prisons

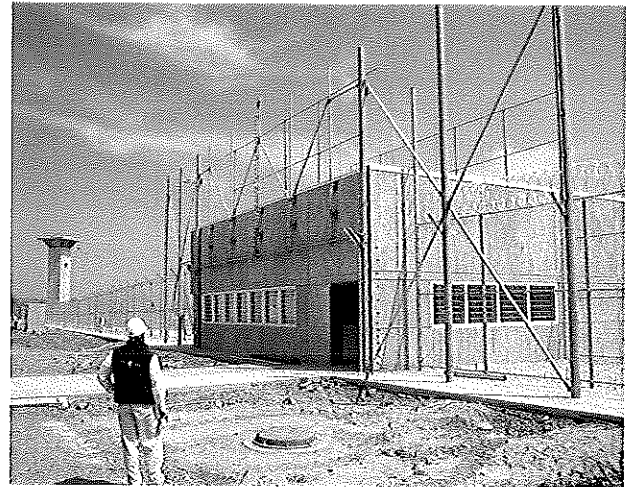
CONTACT: Peter Swift

PHONE : (304) 514-6461

PROJECT LOCATION: Wayne County,
Pennsylvania

PROJECT COST: \$112,500,000.00

PROJECT STATUS: COMPLETE





successful projects

McDowell Federal Correction Institute / Federal Prison Camp

Thrasher Engineering served as a team member with Clark Construction on a design-build project for the Federal Bureau of Prisons. Thrasher Engineering was responsible for all civil design on the project. Included in this scope was all erosion / sediment control, mass and fine grading, site utilities (sanitary sewer, fire and domestic water, storm sewer system), auger monster facility, grease traps (10,000 and 5,000 gallon) and coordination with buried electrical and communication conduits. Also included was were all site components outside the building footprint, ie. fencelines, roads, walkways, athletic facilities, loading docks and all other components associated with a federal correctional facility. Thrasher Engineering also provided oversight during construction.

CLIENT: Federal Bureau of Prisons

CONTACT: Peter Swift

PHONE : (304) 514-6461

CONTACT: McDowell County Commission

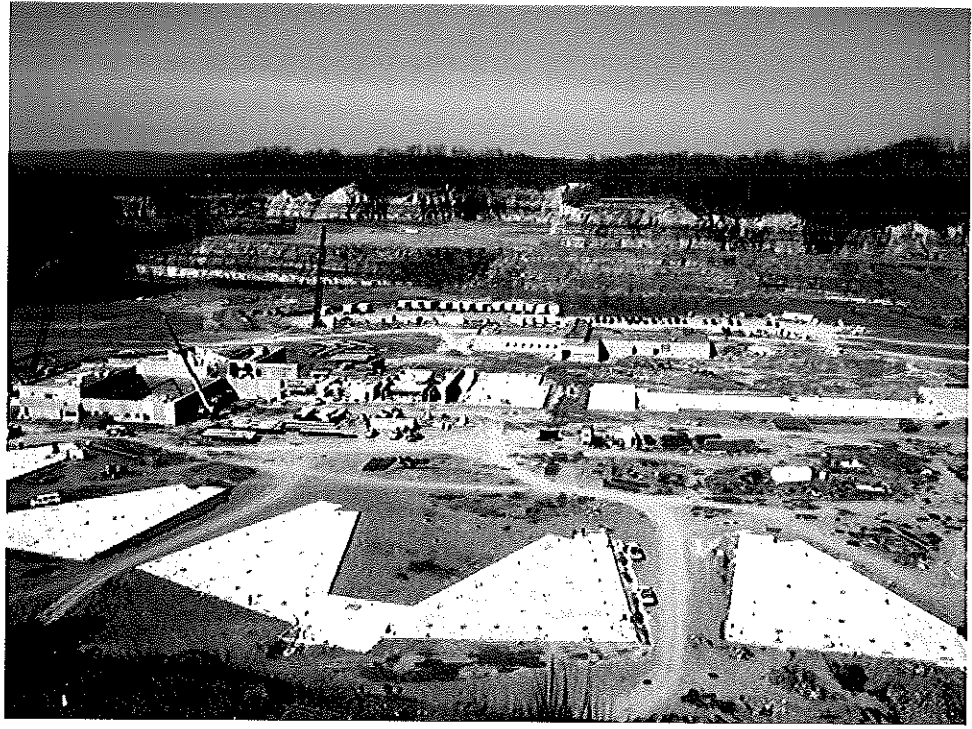
ADDRESS: 109 Wyoming Street
Welch, WV 24801

PHONE: (304) 436-8548

PROJECT LOCATION: McDowell County,
West Virginia

PROJECT COST:
Entire Project: \$112,500,000.00
Civil Engineering: \$50,000,000.00

PROJECT STATUS: COMPLETE





successful projects

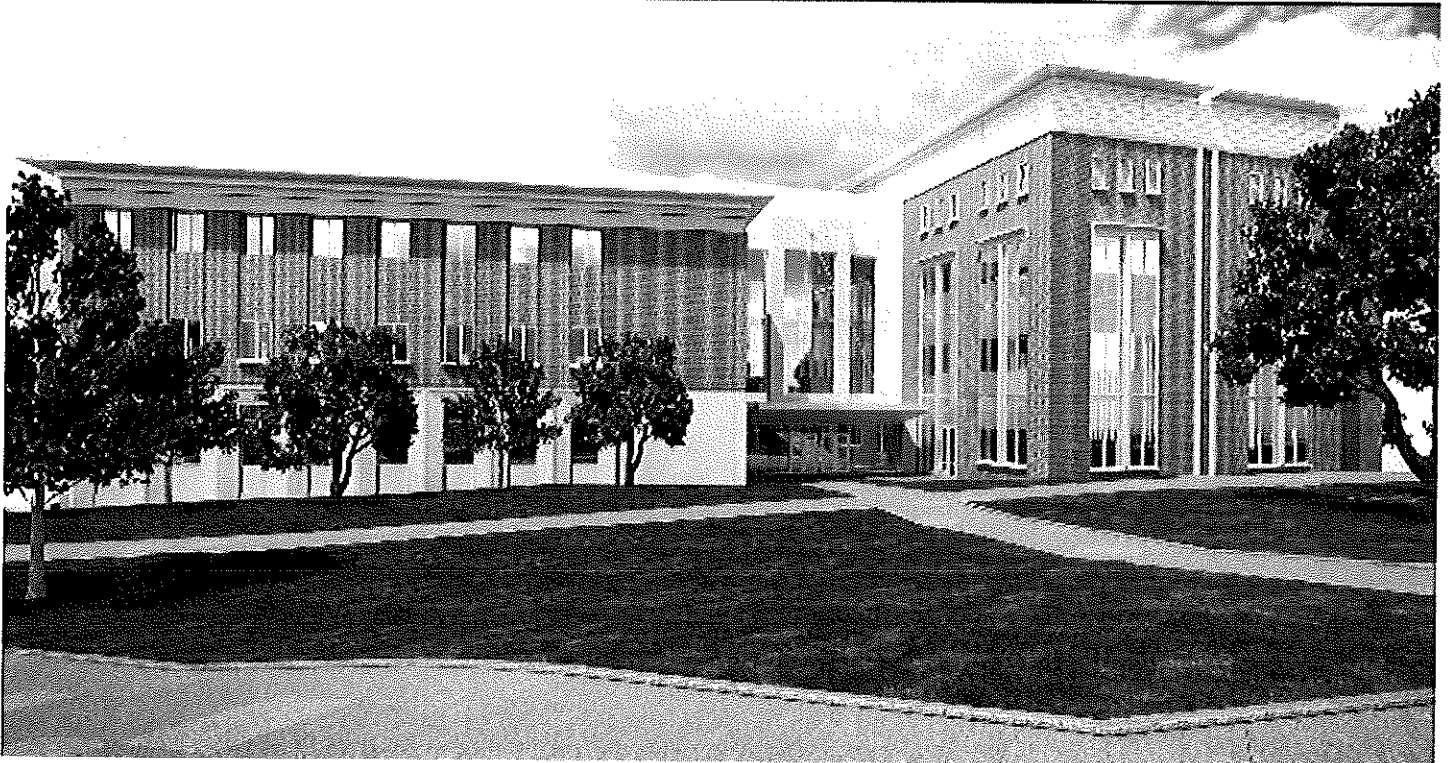
West Virginia University Advanced Engineering Research Building

NGE was hired by the project architect to assist in the foundation design for the new WVU Advanced Engineering Research Building to be constructed at the Evansdale Campus of West Virginia University in Morgantown, West Virginia. NGE provided geotechnical engineering services to aid in design of the project. NGE performed 8 test borings throughout the site to assess the subsurface conditions. The test borings were performed using our track mounted rotary drilling rig. Standard penetration soil testing and sampling was performed at regular intervals in each test boring in accordance with ASTM D 1586 procedures. Rock was cored in select borings to determine the type and condition of bedrock underlying the site. Upon completion of the drilling, soil and rock samples were delivered to our laboratory to detailed examination and testing. The results of the test borings and laboratory testing were used to formulate recommendations for site development and foundation design including recommended foundation type, depth, allowable bearing pressure and estimated settlement.

CLIENT: CONFIDENTIAL

**PROJECT LOCATION: Monongalia County,
West Virginia**

PROJECT STATUS: Complete June 2014





successful projects

Aurora Flight Services Building

Our client desired to construct a new 200 ft. by 200 ft. building for construction of airplane components at the Mid-Atlantic Aerospace Complex in Bridgeport, West Virginia. NGE provided geotechnical engineering services to aid in design of the project. We performed nine test borings throughout the site to assess the subsurface conditions. The test borings were performed using our truck-mounted rotary drilling rig. Standard penetration soil testing and sampling was performed at regular intervals in each test boring in accordance with ASTM D 1586 procedures. Upon completion of the drilling, soil and rock samples were delivered to our laboratory to detailed examination and testing. The results of the test borings and laboratory testing were used to formulate recommendations for site development and foundation design including recommended foundation type, depth, allowable bearing pressure and estimated settlement.

CLIENT: CONFIDENTIAL

**PROJECT LOCATION: Harrison County,
West Virginia**

West Virginia Wesleyan New Science Building

NGE was hired by West Virginia Wesleyan College to assist in the foundation design for the new Science Building on the school's campus in Buckhannon, West Virginia. NGE provided geotechnical engineering services to aid in design of the project. We performed 14 test borings throughout the site to assess the subsurface conditions. The test borings were performed using our track mounted rotary drilling rig. Standard penetration soil testing and sampling was performed at regular intervals in each test boring in accordance with ASTM D 1586 procedures. Rock coring was performed in select borings to assess the type and condition of bedrock underlying the site. Upon completion of the drilling, soil samples were delivered to our laboratory to detailed examination and testing. The results of the test borings and laboratory testing were used to formulate recommendations for site development and foundation design including recommended foundation type, depth, allowable bearing pressure and estimated settlement. During the construction phase of the project, our engineer performed periodic inspections to verify and document proper foundation construction.

CLIENT: West Virginia Wesleyan College

**PROJECT LOCATION: Upshur County,
West Virginia**





repeat clientele

Tom Brown, Director Public Works & Utilities

City of Bridgeport

515 West Main Street

Bridgeport, West Virginia 26330

304-842-8200

A.D. "Butch" Mastrontoni, Utilities Director

City of Weirton Water Board

125 East Bellview Drive

Weirton, West Virginia 26062

304-740-5020

Peter Swift

Federal Bureau of Prisons

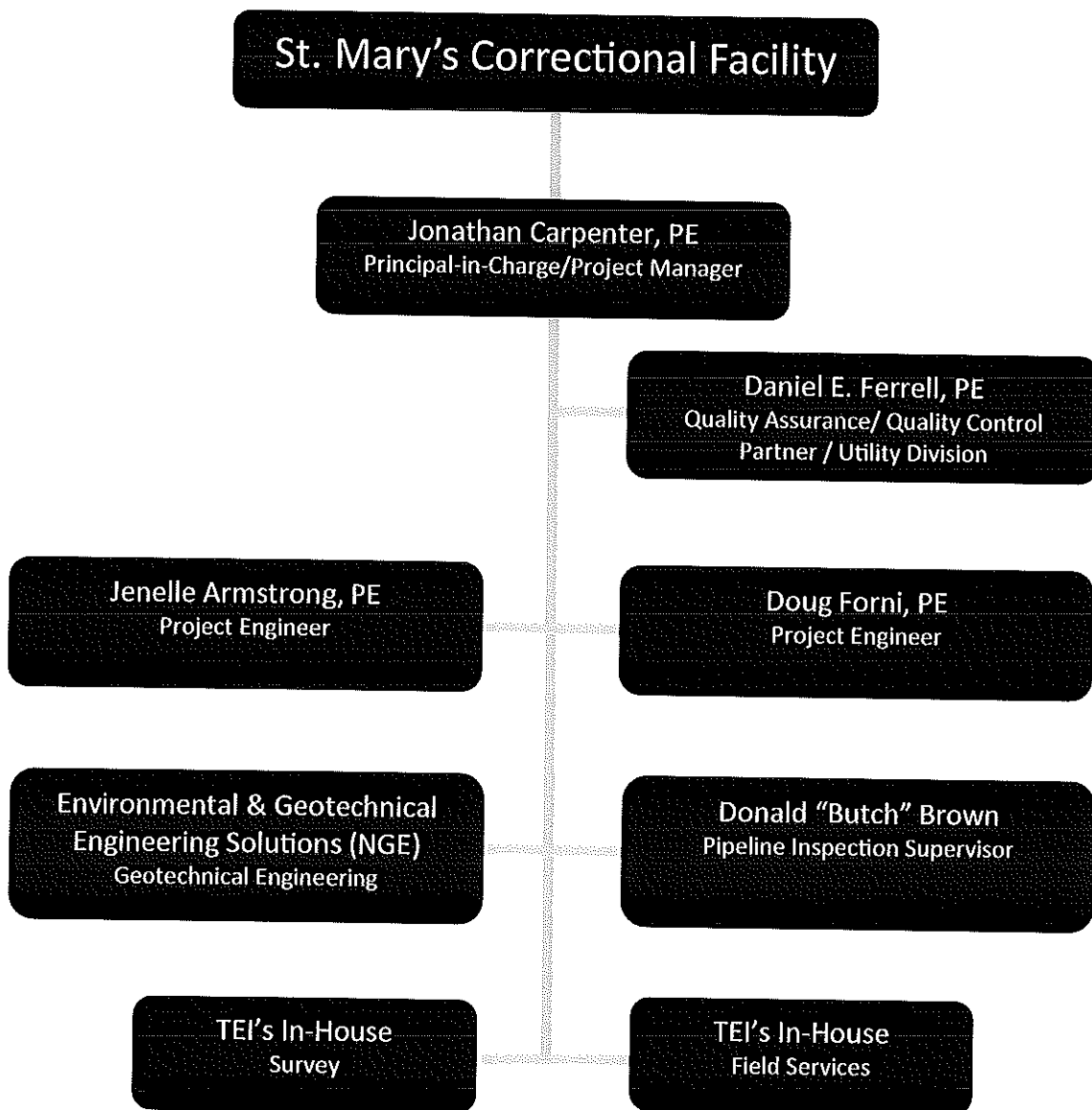
304-514-6461





your project team

The team of professionals TEI & NGE has assembled to bring the St. Mary's Correctional Facility project to fruition is unrivaled by other firms when combining knowledge of the project specifics, expertise and experience. Each member of this team brings a specific area of proficiency that is essential for a successful project.



Jonathan Carpenter, PE

Principal / Project Manager

Jonathan Carpenter, PE is Partner in Thrasher Engineering, Inc. and serves as Managing Partner of the firm's Charleston, West Virginia location. Jonathan joined TEI in 1997 and was named a Partner in the firm in 2009. During his tenure with the firm, he has focused his design and project management skills on projects within the public utility realm, with emphasis on water and wastewater treatment facilities. His work as Project Manager and/or Project Engineer in this area has earned numerous awards from the American Council of Engineering Companies (ACEC). As a Project Manager, he is responsible for the oversight of all technical design aspects in addition to regulatory and funding processes. Jonathan is highly adept in client communication, project scheduling and financial aspects to insure on-time and on-budget quality projects.

Highlighted Experience—Project Manager

City of Weirton: Bench-scale and treatability testing, plant design, preparation of construction documents and construction management of upgrades to the Weirton Water Treatment Plant. Detailed design and oversight of 1.0 Million Gallon Hydropillar Water Storage Tank. Phase I Water line replacement / upgrade.

Mingo County Public Service District: Water Treatment Plant Upgrade to 1400 GPM and Sand Removal Unit; detailed engineering design.

Town of Rowlesburg: 200 GPM WTP to meet Disinfective Byproduct Rule and Water Treatment Rule; detailed engineering design.

Town of Milton: Water Treatment Plant and Distribution System; detailed engineering design.

Town of Bath: Filtration improvements to 1.0 MGD Water Treatment Plant to correct Ground Water Under the Direct Influence of Surface Water; detailed engineering design.

Green Spring Valley Public Service District: Upgrade of treatment plant capacity, membrane filter system,



Education:

B.S. Civil Engineering, 1997 University of Tennessee

Registrations:

Registered Professional Engineer (PE), State of West Virginia, #15425

Registered Professional Engineer (PE), State of Maryland, #32075

Awards:

ACEC WV First Place Gold Award Wastewater Treatment 2011: Weirton Sanitary Board ATAD Project

ACEC First Place Gold Award Water Treatment 2001: Weirton Sludge Handling Project

ACEC Second Place Silver Award Water Treatment 2005: Mingo County Water Treatment Plant

Affiliations:

American Society of Civil Engineers

American Water Works Association – State of WV National Director
Board Member, Past Chairman

increased storage capacity, additional pumping capacity to correct Ground Water Under the Direct Influence of Surface Water. 20-year present worth analysis and detailed design.

Craigsville Public Service District: Design of replacement 1400 GPM Water Treatment Plant including three-stage tapered flocculation, four hour sedimentation basins and gravity mixed media filters.

Lincoln County Public Service District: Water line extension throughout rural areas of the county.

Union—Williams PSD: Water Treatment Plant and Distribution Upgrade, Hydraulic Modeling.



Daniel E. Ferrell, PE
 Partner / QA/QC /
 Utilities Division Manager

Daniel E. Ferrell joined Thrasher Engineering in 2004 and serves as a firm partner and Manager of the Utility Department, overseeing all projects related to water and wastewater needs. Mr. Ferrell is responsible for public utility projects from conception to design and construction, with focus on client representation for funding and regulatory issues. Within his scope of responsibilities, he directs the work of 7 Project Managers and numerous Project Engineers and technicians assigned to projects throughout the Mid-Atlantic region.

Typical tasks involved as part of Mr. Ferrell's work includes project management, utilities systems management, project planning, funding, design development of bid documents, construction administration and operations.

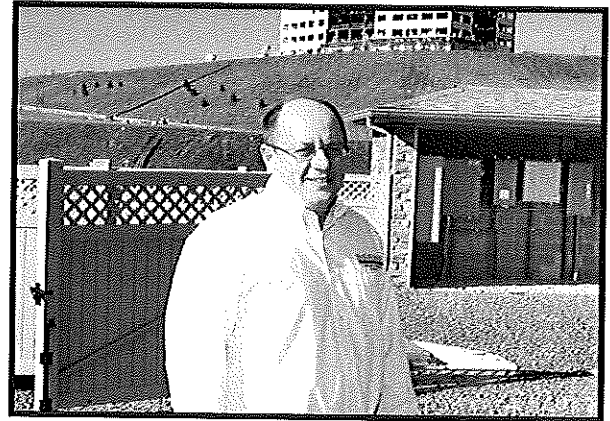
Prior to joining TEI, Mr. Ferrell served as Director of Public Works and City Engineer for the City of Bridgeport, West Virginia where he was responsible for water, wastewater and storm water infrastructure. During his tenure, he was instrumental in the upgrades and expansion of the City's systems to meet expansive growth during the development of numerous economic growth developments within the City's jurisdiction including a new 300-bed hospital facility and two business and residential parks.

As a specialist in utilities, specifically wastewater issues including the development of Long Term Control Plans and reduction of CSO and SSO issues, Dan is a skilled speaker for educational seminars presented to public utility managers and operators.

Highlighted Experience - Principal-in-Charge / Project Manager

City of Bridgeport, West Virginia - Principal-in-Charge and Project Manager for all aspects of the City's water and wastewater improvement projects including extensions, upgrades and new facilities, including development and follow-through of the City's Long Term Control Plan.

City of Clarksburg, West Virginia - Principal-in-Charge and Project Manager for all aspects of the City's water and wastewater improvement projects including extensions, upgrades and new facilities, including development and follow-through of the City's Long Term Control Plan.



Education

M.S., Civil Engineering, Old Dominion University
 1993

B.S., Civil Engineering- West Virginia University,
 1988

Registrations

Registered Professional Engineer (PE), State of
 West Virginia #13462

Registered Professional Engineer (PE), State of
 Pennsylvania #PE071143

Registered Professional Engineer (PE),
 Commonwealth of Virginia #0402-023968

Affiliations

West Virginia Municipal Water Quality
 Association

West Virginia Rural Water Association

State of West Virginia Infrastructure Study—Principal-in-Charge and Project Manager for all of TEI's scope of services in a team effort for the State of West Virginia's study and report of all water and wastewater systems throughout the State.

Paw Paw Route 19 Water— Principal-in-Charge and Project Manager for the reduction of water loss and replacing/repairing faulty lines.

WVU Evansdale Water Line-Principal-in-Charge and Project Manager for upgrade and line replacement to provide fire suppression and water service to areas around the Evansdale Campus Engineering Buildings.



Jenelle Armstrong, PE

Project Engineer

Jenelle Armstrong, PE joined TEI in 2011, bringing more than 14 years of experience in project management and detailed design of water and wastewater treatment plants, pumping stations, water distribution and wastewater collection systems. Her experience includes design and construction management oversight for treatment and conveyance projects ranging in size from \$1M to over \$21M in construction costs. Ms. Armstrong is highly versed in process, hydraulics and modeling for both water and wastewater systems.

Highlighted Experience - Project Engineer / Project Manager

Planning

- Weirton State Street Slip Storm water and Sewer Improvements
- City of Bridgeport WWTP Evaluation
- Pea Ridge Pump Station Design

Design

- Kingwood WWTP Upgrade
- Clarksburg WWTP Upgrade
- Junior WWTP Upgrade
- Dominion at Natrium Sewer and WWTP

Engineering During Construction

- Preston County WWTP Upgrade (Hazelton) Submittal Review
- Canaan Valley WWTPs Start-up, Troubleshooting, and Commissioning
- Canaan Valley WWTPs O&M Manual Development
- Union WWTP Excessive Aeration Air Troubleshooting

Experience with other firms:

Northeast Loop 375 36-inch Pipeline, El Paso, TX — Project Engineer in development of water facilities to provide operational flexibility by adding bi-directional water transfer capability between the Valley and Airport Pressure Zones and the East High Pressure Zone.

Paisano Valley (Racetrack Drive to Sunset Reservoir) Water Transmission Main Improvements Project, El Paso, TX - Project Manager for 24" and 36" pipeline replacement and design of new 48" main.



Education:

M.E. - Environmental Engineering
University of Texas at El Paso
B.S.- Civil Engineering
University of Texas at El Paso
Ocean Engineering
United States Naval Academy,
Annapolis, MD

Registrations:

Registered Professional Engineer,
State of Texas, 92 775
Registered Professional Engineer
State of New Mexico, 19435
Registered Professional Engineer,
State of West Virginia 018299

Additional Training:


40-hour OSHA HAZWOPER Training
40-hour Project Management Training
80-hour Material Selection Training
20-hour Basic Offshore Survival and
Emergency Training

Awards:

2005 Texas Society of Professional
Engineers (TSPE) El Paso Branch-
Young Engineer of the Year
2005 Distinguished Graduate- Masters
of Engineering

Affiliations:

American Water Works Association
Desert Mountain Chapter -
Trustee and Past President
American Society of Civil Engineers -
Past Chapter President
Tau Beta Pi National Engineering Honor
Society
Chi Epsilon Civil Engineering Honor
Society



Jenelle Armstrong, PE

Project Engineer

Coronado Country Club Pressure Zone No. 2 Water Line Break Analysis, El Paso, TX– Project Manager for detailed evaluation of water line breaks including water modeling and surge analysis, resulting in the recommendation of replacing approximately 2 miles of pipeline with 18" ductile iron pipe.

Water and Wastewater Treatment

- Performed and managed preliminary and detailed design work for wastewater treatment plants including influent pumping stations, screening equipment, grit removal systems, primary clarifiers, aeration basins, secondary clarifiers, nitrification basins, tertiary treatment, RAS and WAS pumping systems, chemical feed systems, and lime re-carbonation systems (performed design work at 6 different WWTPs ranging in size from 1.2 MGD to 62 MGDF).
- Conducted preliminary and detailed design for multiple water booster stations including retrofitting an inoperable booster station. Preliminary design included a detailed water model to determine the hydraulic problems causing the existing pumps to underperform. Detailed design included replacing the pumps, piping layout and valves as well as upgrading the motors, starters and electrical service to the station.
- Performed preliminary design for a 325 CFS Storm water Pumping Station with associated 84-inch force main approximately 1mile in length. Design includes five non-clog vertical pumps, traditional bar racks and a unique 90- degree approach layout to minimize debris deposits on the bar racks.

Water Distribution and Wastewater Collection

- Designed 12-inch to 36-inch water distribution lines (PVC and ductile iron Pipe (fc)).
- Designed 8-inch to 108-inch sewer collection pipelines

and 8-inch to 24-inch force main.

- Performed preliminary evaluation on three existing sewer inverted siphons (21-inch, 24-inch and 30-inch concrete pipe) that were installed between 1920 and 1940.
- Performed detailed design for a new 36-inch sewer inverted siphon (sag pipe) to increase the overall capacity of the siphon system to convey the flow from the growth occurring at a local military base.
- Designed ground and elevated water storage facilities for potable and reclaimed water (250K gallons to 4 MG in size). Designs included welded steel, composite, multi-legged and pedestal style tanks.

Pipeline Design and Hydraulic Analysis

- Conducted hydraulic analyses and routing studies on water and wastewater pipelines.
- Developed detailed water distribution system models using various software programs such as H2ONet, H2OMap Water and WaterCAD.
- Developed and evaluated sewer collection system models using software programs such as SewerCAD, H2OMap Sewer, FlowMaster, and CulvertMaster.

■ ■ ■ ■

Charles "Doug" Forni, PE,

Project Engineer

Doug Forni, PE, RLA joined Thrasher Engineering in 1995, after completing his Bachelors of Science in Civil Engineering from West Virginia University. Mr. Forni serves as Project Engineer on commercial, governmental and residential site development projects. He has his experiences in all aspects of site engineering, by taking projects from concept to construction.

Mr. Forni's specialties lie in Site and Land Development Engineering, Conceptual Planning, Landscape Architecture and Construction Administration.

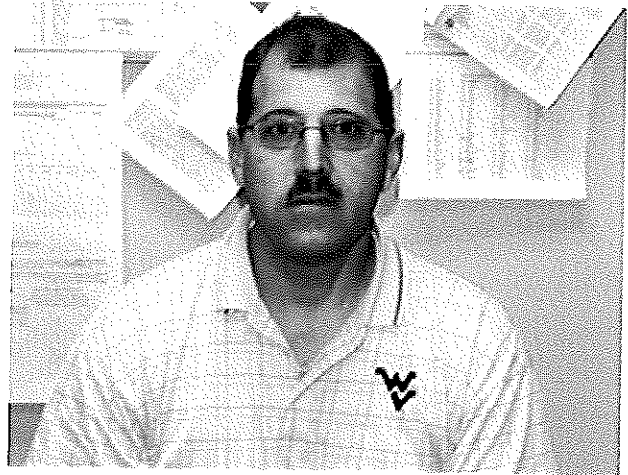
Highlighted Experience—Project Engineer

McDowell FCI: Federal Correctional Facility (Welch, WV)

Completed conceptual and design documents for the Civil scope of the facility (Federal Correctional Facility, along with an associated camp, warehouse, utility plant and garage facility). Overcame difficult site constraints such as deep valley fills, large highwalls and unconsolidated fills from previous mining activities. Worked with the Bureau of Prisons and other design professionals on developing design documents for a design/build project. Scope included mass grading, site utilities, layout documents, roads and pavements, recreation facilities and many miscellaneous items required in the civil scope.

Glennville FCI: Federal Correctional Facility (Glennville, WV)

Completed conceptual and design documents for the Civil scope of the facility (FCI, along with an associated camp, warehouse, utility plant and garage facility). Overcame difficult site constraints on a site which had previously been surface and undermined. Worked with the Bureau of Prisons and other design professionals on developing design documents for a design/build project. Scope included mass grading, site utilities, layout documents, erosion and sediment control, storm collection system, roads and pavements, recreation facilities and many miscellaneous items required in the civil scope.



Education

West Virginia University – Bachelor Of Science –
Civil Engineering

West Virginia University – Bachelor Of Science –
Landscape Architecture

Registrations

Registered Professional Engineer, State of West
Virginia

Registered Professional Engineer, State of
Maryland

Registered Professional Engineer, State of
Pennsylvania

Registered Landscape Architect, State of West
Virginia

Registered Landscape Architect, State of Florida

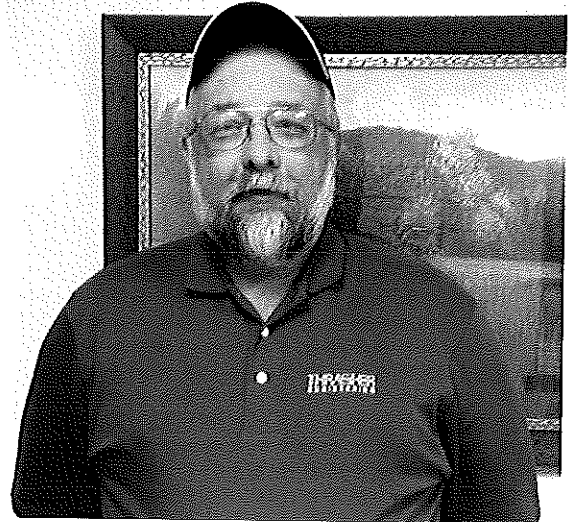
Canaan USP: United States Penitentiary (Waymart, PA)

Completed conceptual and design documents for the Civil scope of the facility (USP, along with a associated camp, warehouse, utility plant and garage facility). Overcame difficult site constraints on a sensitive site such as glacial tills and large areas of wetlands. Worked with the Bureau of Prisons and other design professionals on developing design documents for a design/build project. Scope included mass grading, site utilities, layout documents, erosion and sediment control, storm collection system, roads and pavements, recreation facilities and many miscellaneous items required in the civil scope.

Donald "Butch" Brown

Pipeline Inspection Supervisor

Donald "Butch" Brown joined Thrasher Engineering in 1987 and serves as Testing Supervisor for the firm. He is primarily responsible for scheduling and supervising inflow and infiltration investigations and GIS field crews, as well as CADD work related projects. In addition, Mr. Brown is responsible for collection of field data and mapping for Long Term Control Plans.



Highlighted Experience—Pipeline Inspection Supervisor

- Town of Reedsville I&I Investigation; Pipeline Inspection Supervisor
- Arthurdale Sewage Association I&I Investigation; Pipeline Inspection Supervisor
- Town of Rowlesburg, Pipeline Inspection Supervisor
- City of Parsons, Pipeline Inspection Supervisor and I&I Investigation
- City of Bridgeport, Pipeline Inspection Supervisor and GIS Mapping and Long Term Control Plan
- City of Clarksburg, GIS Mapping and Long Term Control Plan
- Malden PSD Pipeline Inspection Supervisor; I&I Investigation
- Garrett County, MD Mt Lake Park I&I Investigation; Pipeline Inspection Supervisor and GIS Mapping
- Garrett County, MD Loch Lynn Heights I&I Investigation; Pipeline Inspection Supervisor
- Pea Ridge PSD, Pipeline Inspection Supervisor and GIS Mapping and I&I Investigation
- Greater Paw Paw Sanitary District, Pipeline Inspection Supervisor and Long Term Control Plan
- Huttonsville PSD I&I Investigation; Pipeline Inspection Supervisor

Certifications

- Microsoft Networking
- AutoDesk Civil Design
- WVDOH – Inspection and Testing
- OSHA Permit-Required Confined Space Entry Supervisor

- Jane Lew PSD, Pipeline Inspection Supervisor
- Town of Farmington, Pipeline Inspection Supervisor and Long Term Control Plan
- Town of Albright, Pipeline Inspection Supervisor and I&I Investigation
- City of Kingwood, Pipeline Inspection Supervisor; I&I Investigation and Long Term Control Plan
- City of Mount Hope I&I Investigation and GIS Mapping
- Canyon Public Service Pipeline Inspection Supervisor
- City of Nutter Fort I&I Investigation and Long Term Control Plan
- Kingmill Valley Public Service District Long Term Flow Monitoring
- City of Williamsport, MD I&I Investigation and Pipeline Inspection Supervisor
- Kanawha County Metro 911 GIS Mapping

John E. Nottingham, P.E., P.S.



Mr. Nottingham has served as Principal Engineer for the West Virginia office of NGE since late 2002 after having managed Geotechnical Services at Triad Engineering. In this capacity, he has served as lead Geotechnical Engineer on a variety of government and commercial design and construction projects. His responsibilities on these projects include direction and coordination of all geotechnical engineering activities. Duties on these projects have included foundation investigation report production, foundation and retaining wall design, fill embankment and cut slope design, dam design and analysis, slope stability analysis, pavement design, design of drainage systems, supervision of subsurface drilling programs, field activity coordination, laboratory data computation and processing, performance of field work, client relations, and supervision of staff and project level geotechnical engineers.

Fields of Competence

- Highway & Airport Geotechnical Design
- Foundation Investigations
- Pavement Analysis and Design
- Landslide Analysis & Remedial Design
- Ground Water and Seepage Analysis & Design
- Retaining Wall Design
- Mine Subsidence Investigations
- Forensic & Insurance Investigations
- Construction Monitoring
- Personnel Management
- Project Management (schedule and budget)
- Project Estimating

Education

- B.S., Civil Engineering, West Virginia University - 1987
- M.S., Civil Engineering, West Virginia University - 1995

Registration/Certifications

- Registered Professional Engineer in West Virginia. Registration No. 12357 (since 1994)
- Registered Professional Surveyor in West Virginia. Registration No. 1495 (since 1995)

Employment History

- November 2002 – Present
Branch Manager, Vice President, Principal Engineer, NGE, LLC
- 1997 – November 2002
Geotechnical Services Manager, Triad Engineering, Inc.
- 1996 – November 2002
Senior Engineer, Triad Engineering, Inc.
- 1993 – 1996
Project Engineer, Triad Engineering, Inc.
- 1988 – 1993
Staff Engineer, Triad Engineering, Inc.



Larry C. Nottingham, PhD, PE



Mr. Nottingham served as a Principal Engineer at Triad Engineering, Inc. for over 25 years before joining the professional staff at NGE. During that time he has accumulated a broad range of experience in the numerous disciplines of geotechnical engineering. Mr. Nottingham also served as a professor and department chair of the Civil Engineering Department at the West Virginia University Institute of Technology in Montgomery, West Virginia. Mr. Nottingham was involved with consultation and review of many subsidence related projects performed for BRIM as well as the WVDEP.

Fields of Competence

- Foundation Investigations
- Landslide Analysis & Remedial Design
- Mine Subsidence Investigations
- Highway & Airport Geotechnical Design
- Pavement Analysis & Design
- Retaining Wall Design
- Forensic & Insurance Investigations
- Expert Witness Consultation
- Ground Water and Seepage Analysis & Design
- Dam Analysis & Design
- Personnel Management
- Project Management
- Project Estimating

Education

- B.S.C.E., Civil Engineering, West Virginia Institute of Technology, 1965
- M.S.C.E., Civil Engineering, University of Pittsburgh, 1966
- Ph.D., Civil Engineering, University of Florida, 1975

Registration/Certifications

Registered Professional Engineer in West Virginia, Kentucky, and Ohio

Employment History

- | | |
|--|---|
| • May 2005 – Present
Senior Engineer, NGE, LLC | • 1975 - 1979
Senior Engineer, Fugro Gulf, Inc., Houston, Texas |
| • 1979 – May, 2005
Principal Engineer, Triad Engineering, Inc. | • 1970 - 1974
Project Engineer, Florida Department of Transportation |
| • 1989 - 1994
Professor and Department of Civil Engineering
Chair, West Virginia Institute of Technology | • 1967 – 1970
Project Engineer – Ackenheil & Associates, Inc. |



Chuck Montgomery, P.G.



Mr. Montgomery has served as Project Geologist on numerous projects for clients in private industry as well as for state and federal agencies. He has performed a variety of roles in various projects from office management activities to coordination of field activities. Duties on these projects have included foundation investigation report production, mine subsidence evaluation and assessment, supervision of subsurface drilling programs, field activity coordination, laboratory data computation and processing, performance of fieldwork, client relations, and supervision of staff. Mr. Montgomery also coordinates and performs Crosshole Sonic Logging (CSL) testing, a non-destructive method of analyzing the integrity of concrete shafts.

Fields of Competence

- Foundation Investigations
- Landslide Analysis
- Mine Subsidence Investigations
- Seismic Site Class evaluation, per International Building Code (IBC) 2000 edition.
- Forensic & Insurance Investigations
- Crosshole Sonic Logging (CSL)
- Personnel Management
- Project Management (schedule and budget)
- Project Estimating

Education

- B.S., Geology, Marshall University - 1991
- OSHA 1910.120 40-hour HAZWOPER Training

Registration/Certifications

- Registered Professional Geologist in Kentucky.
Registration No. KY-2258 (since 1999)
- Certified Monitoring Well Driller in West Virginia
- OSHA 1910.120 40-hour HAZWOPER Training

Employment History

- February 2004 - Present
Project Manager, NGE, LLC
- 1996 - February 2004
Project Geologist, Triad Engineering, Inc.
- 1992 - 1996
Staff Geologist, Triad Engineering, Inc.



Gene Brown, P.E.



Mr. Brown has served as Staff Engineer on numerous projects for clients in private industry as well as for state and federal agencies. He has performed a variety of roles in various projects from office management activities to coordination of field activities. Duties on these projects have included foundation investigation report production, slope stability analysis, dam analysis, AutoCAD drafting, supervision of subsurface drilling programs, field activity coordination, field portion of environmental site assessments, structural inspections, GPS and conventional surveys, laboratory data computation and processing, performance of fieldwork, client relations, and supervision of staff.

Fields of Competence

- Foundation Investigations
- Landslide Analysis & Remedial Design
- Seismic Site Class evaluation, per International Building Code (IBC) 2000 edition.
- Construction Monitoring
- Personnel Management
- Project Management (schedule and budget)
- Project Estimating

Education

- BS, Civil Engineering Technology, Bluefield State College, 2000
- BS, Architectural Engineering Technology, Bluefield State College, 2000

Registration/Certifications

- Registered Professional Engineer, West Virginia
- OSHA 1910.120 40-hour HAZWOPER Training, 2005

Employment History

- October 2006 – Present
Staff Engineer, NGE, LLC
- 2001 – 2006
Staff Engineer, Terradon Corporation
- 2000 – 2001
Survey Technician, John E. Chance & Associates, Inc
- 1999
Engineer Intern, Burgess & Niple, Ltd.



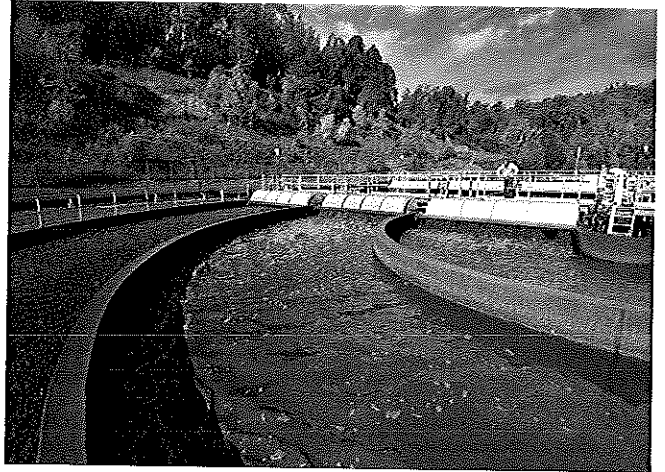


○ *integrated services*

Wastewater Collection and Treatment

Wastewater collection and treatment is one of the most significant advances in public health – and is vital to the health of municipalities, businesses and communities as well. Environmental, technological and cost issues are all involved – and call for both experience and a strong understanding of all facets of wastewater collection and treatment.

TEI is highly qualified to perform all engineering services necessary to provide effective and efficient wastewater collection and treatment services. Because of our reputation for successful projects, we have developed an extensive list of repeat clientele for such projects.



TEI's Wastewater Collection & Treatment expertise includes:

Design for collection system rehabilitation, replacement and extensions

Wastewater treatment plant design

Combined Sewer Overflow (CSO) reduction and Long-Term Control Plan development

Lift station / pump station design

Inflow & Infiltration Testing and Evaluation

Construction Management

Custom sewer and storm water Geographic Information System (GIS) interfaces and system modeling

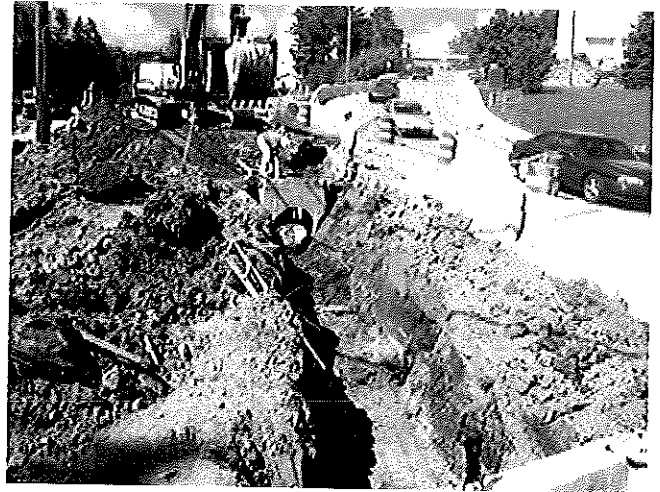




○ *integrated services*

Storm Water Systems

TEI is prepared to take on the challenge to make your storm water management project a success. Regulations, the creation of public storm water utilities, and the focus on downstream effects of development are pushing storm water management issues to the forefront. With these changes come the challenges, unfamiliarity and uncertainty that accompany most new initiatives for public entities and private developers alike. With a long, successful history of working with public utility clients, an understanding of the challenges facing developers, and a site development department that employs innovative, sustainable design principles for storm water control, TEI is uniquely qualified to serve as the engineer for your storm water project.



Fairmont State University Storm Water System

TEI's Storm Water Management expertise includes:

Municipal Separate Storm Sewer System (MS4) consulting & compliance

Design of pipelines, channels & culverts

Detention Pond Design

Erosion & Sediment Control Plans

Underground Storage / Injection Wells

Bio-Retention Systems

NPDES Permitting & Compliance

Watershed & Flood studies

HEC-RAS Stream Modeling

Best Management Practices (BMP) Evaluation & Design

Geographic Information Systems (GIS)





integrated services

Pipeline Inspection

Utilizing proven methods of *manual inspections, flow metering, smoke and dye testing* and ultimately, *video camera inspections*, TEI provides comprehensive testing of deficient pipeline systems, which can be used to help clients determine the most effective and efficient method to rehabilitate or upgrade their sanitary sewer systems.

Equipment capabilities allow the TEI team to inspect up to 1,000 linear feet of 4" to 30" pipe in one session. We examine the condition of pipelines, including cracked and separated joints and faulty lateral connections, as well as locate system structures. The scope of TEI's pipeline inspection services includes:

- + Video camera inspections
- + Flow metering
- + Smoke & dye testing

Manual inspections

TEI's team also works with our clients on community outreach regarding testing schedules and procedures.



TEI's Pipeline Inspection Equipment includes:

Aires Universal Saturn III Video Inspection System

- *Tractor mounted camera for 4" to 30" pipe—up to 1,000 LF*
- *Push camera for 4" or smaller diameter—up to 400 LF*
- *Pan and tilt features*
- *Records to VHS / Transferred to DVD*

Flow-Dar Flow Monitors (12" diameter + pipe)

Data Gator Flow Monitors (6" to 12" pipe)

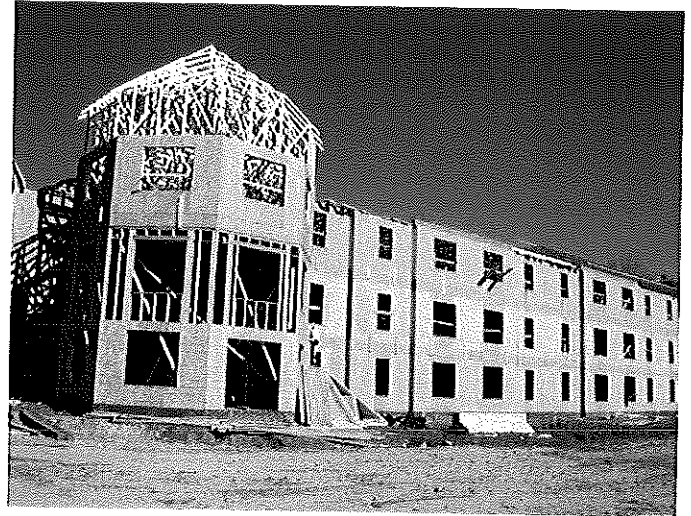
Complete Smoke Testing Equipment



integrated services

Geotechnical Engineering

The professional staff of NGE has extensive experience in analyzing and evaluating the natural complexities and variability's present in the subsurface. With in-house drilling and laboratory equipment, NGE has the tools to investigate soil, bedrock, and groundwater conditions and evaluate their effect on a given project. Whether it's foundation bearing capacity, site grading/slope configurations, or retaining wall design, NGE has the resources to obtain and analyze the subsurface data necessary for project completion.



NGE's Geotechnical Engineering services include:

Foundation Investigations:

Commercial / Residential Construction

WVDOH Bridge & Roadway

Airport Geotechnical Design

Public & Private Utilities

Landslide Investigation / Remediation—slope design, retaining wall design

Forensic Engineering / Insurance Investigation

Mine Subsidence Investigations / Ground Stabilization

Dam Design / Rehabilitation

Pavement Analysis and Design

Groundwater Seepage Analysis and Design

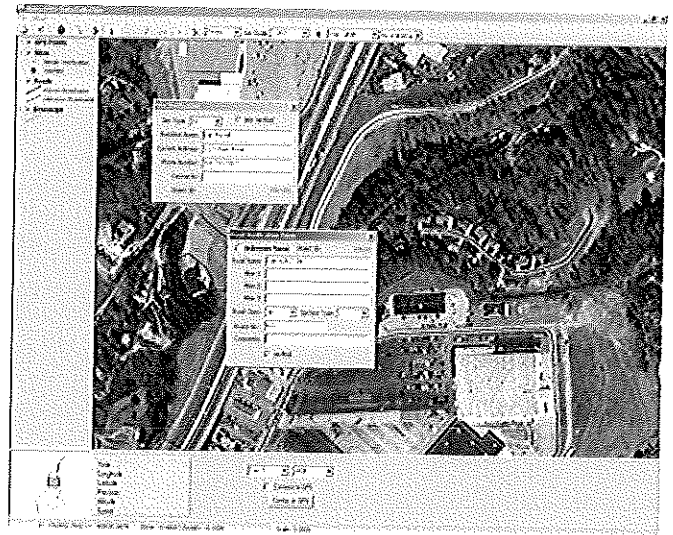




integrated services

GIS Mapping

Clients ranging from small public utilities through large, metropolitan areas have benefitted from TEI's full-service approach to GIS, including our in-house survey and field verification personnel. TEI's commitment to training and on-going technical support makes certain you benefit from all applications of your GIS.



*Custom Mapping and Addressing
Software Created for Kanawha County*

TEI's GIS Mapping & Software development services include:

***MetroGIS—Government infrastructure / Planning & Zoning / Public Works /
Law enforcement / Tax Mapping***

Public Utilities—Water / Wastewater / Storm Water

***Natural resource management & mapping environmental studies / Oil & Gas
industry / Land & Timber management***

GIS software for E911 Data Collection

Maintenance & Management of commercially available software

GIS marketing analysis

Legal displays & depositions

Realty location analysis



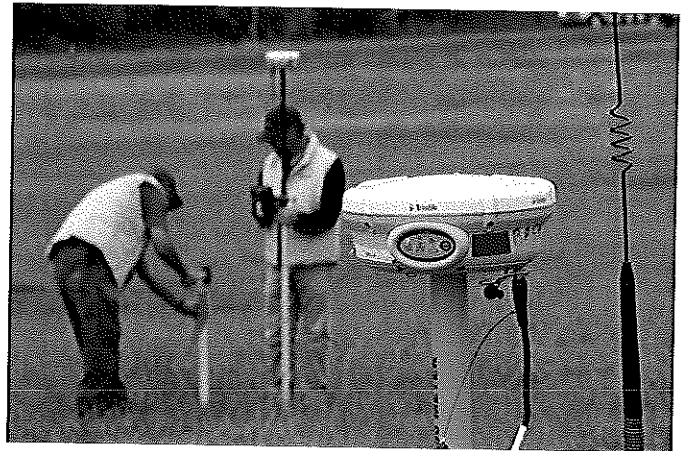
integrated services

Survey Services

The Land Surveying Department performs a wide range of services, not only in conjunction with engineering projects, but independently for both public and private clients.

TEI's survey crews are equipped with the latest in conventional and GPS survey equipment. They include: Utility Line Locators (Three radio detection RD 4000), GPS Survey Equipment (15 GNSS Trimble R8 Units, 12 TSC3 Survey Controllers, 8 TSC2 Survey Controllers, 6 GEOXH Trimble Units), Conventional Survey Equipment (Robotic total stations, 2 Trimble S-6, Electronic total stations, 3 Leica TCR 405, 4 Leica TC 405, 1 Leica TC 407, 2 Leica TC 403, 1 Leica TC 303, 1 Leica TC 703, 1 Leica TC 307, 1 Leica 1000, 1 Topcon 6TS 605, 1 Trimble Digital Level.

This equipment allows the firm to utilize more nearly 20 survey crews with both conventional and GPS equipment. The survey crews and office support staff can easily provide generated field data in virtually any digital



format referenced to specified projection systems. The field crews are all equipped with late model four-wheel drive vehicles stocked with the most modern equipment available to perform professional land surveying services.

TEI's Survey expertise includes:

Right-of-way / Easement Surveying

Pre and Post Mine Subsidence Surveys

GPS Ground Control Surveys for Aerial Mapping

Landfill Closure Surveys

Topographic Surveys

Construction layout for site development projects, highways, railroads, sanitary sewer systems and water and wastewater treatment plants

Boundary Surveys

ALTA / ACSM Surveys

Aerial Photography





integrated services

Construction Management and Monitoring

Comprehensive oversight of every stage of a construction project provides the greatest possible benefit by keeping projects on time, on budget, and assuring that the outcome meets the designer's and the owner's standards. That assurance is the mission of TEI's construction managers and project representatives.

TEI has nationally and state certified project representatives responsible for overseeing the integrity of design and the interests of its clients during the construction phase. Our methods of project monitoring and quality assurance developed over the years have earned the respect of not only our clients, but contractors, other designers and project owners.

Regardless of the project size, the goal of a TEI Project Representative is to utilize their professional skills to protect the interest of our client throughout the construction process.

Our Construction Managers bring strong communication



and administrative skills to project management and accuracy to inspection. TEI inspects the construction of \$60,000,000 per year in water and wastewater systems, site development, roadways and bridges.

TEI's Construction Management & Monitoring methods for quality control and assurance include:

Regularly Scheduled Planning & Progress Meetings

Engineering during Construction

Daily Logs and Progress Sheets

Cut Sheets

Quantity Tracking





about us

Thrasher Engineering, Inc. (TEI) is a civil engineering consulting firm specializing in all facets of engineering from public works projects to site development efforts. The majority of TEI's work involves publicly funded water treatment and distribution systems, sewage collection and treatment systems, industrial and business park development, as well as transportation engineering including airports, roadways and bridges. In 2005, TEI added architectural services to the firm.

Since our formation, the company has grown to a firm of nearly 300 persons. Our full and diverse staff has the resources to handle many projects, both large and small, simultaneously. The client base includes cities, towns, county governments, and public service districts. We also provide services to a number of Federal and State governmental agencies and to private corporations.

More than \$600 million in water, sewer, site development, and survey and construction management projects have been designed and supervised by the firm in our 29-year history. This experience will be beneficial in making your project a success.

Locations

CLARKSBURG, WEST VIRGINIA

CHARLESTON, WEST VIRGINIA

BECKLEY, WEST VIRGINIA

PRINCETON, WV

OAKLAND, MARYLAND

CANTON, OHIO

PITTSBURGH, PENNSYLVANIA





State of West Virginia
 Department of Administration
 Purchasing Division
 2019 Washington Street East
 Post Office Box 50130
 Charleston, WV 25305-0130

Request for Quotation

RFQ NUMBER
 COR61531

PAGE
 1

ADDRESS CORRESPONDENCE TO ATTENTION OF
 TARA LYLE
 304-558-2544

RFQ COPY

TYPE NAME/ADDRESS HERE

VENDOR

Thrasher Engineering, Inc.
 30 Columbia Boulevard
 PO Box 1532
 Clarksburg, WV 26302-1532

SHIP TO

DIVISION OF CORRECTIONS
 ST. MARYS CORRECTIONAL CENTER
 (COLIN ANDERSON CENTER)
 STATE ROUTE 2
 ST. MARYS, WV
 26170
 304-558-2036

DATE PRINTED	TERMS OF SALE	SHIP VIA	F.O.B.	FREIGHT TERMS
04/20/2012				

BID OPENING DATE: 06/12/2012 BID OPENING TIME 01:30PM

LINE	QUANTITY	UOP	CAT. NO.	ITEM NUMBER	UNIT PRICE	AMOUNT
0001	1	JB		906-00-00-001		
ARCHITECT/ENGINEERING SERVICES, PROFESSIONAL EXPRESSION OF INTEREST (EOI) THE WEST VIRGINIA PURCHASING DIVISION FOR THE AGENCY, WV DIVISION OF CORRECTIONS, IS SOLICITING EXPRESSIONS OF INTEREST FOR PROFESSIONAL ARCHITECTURAL ENGINEERING DESIGN SERVICES TO CORRECT VARIOUS ISSUES DEALING WITH A GREASE TRAP, MUFFIN MONSTER, STORM WATER LINES, SEWER LINES AND OTHER PROJECTS AT THE ST. MARYS CORRECTIONAL CENTER PER THE ATTACHED SPECIFICATIONS. TECHNICAL QUESTIONS MUST BE SUBMITTED IN WRITING TO TARA LYLE VIA MAIL AT THE ADDRESS SHOWN IN THE BODY OF THIS EOI, VIA FAX AT 304-558-4115, OR VIA EMAIL AT TARA.L.LYLE@WV.GOV. DEADLINE FOR ALL TECHNICAL QUESTIONS IS 05/23/2012 AT THE CLOSE OF BUSINESS. ANY TECHNICAL QUESTIONS RECEIVED WILL BE ANSWERED BY FORMAL ADDENDUM ISSUED BY THE PURCHASING DIVISION AFTER THE DEADLINE HAS LAPSED. MANDATORY PRE-BID A MANDATORY PRE-BID WILL BE HELD ON 05/15/2012 AT 10:30 AM AT THE ST. MARYS CORRECTIONAL CENTER. ALL INTERESTED PARTIES ARE REQUIRED TO ATTEND THIS MEETING. FAILURE TO ATTEND THE MANDATORY PRE-BID SHALL RESULT IN DISQUALIFICATION OF THE BID. NO ONE PERSON MAY						

SEE REVERSE SIDE FOR TERMS AND CONDITIONS

SIGNATURE <i>Tara Lyle</i>	TELEPHONE 304-624-4108	DATE June 11, 2012
TITLE Partner/Principal-in-Charge	FAX 55-0633596-6	ADDRESS CHANGES TO BE NOTED ABOVE

WHEN RESPONDING TO RFQ, INSERT NAME AND ADDRESS IN SPACE ABOVE LABELED VENDOR



State of West Virginia
 Department of Administration
 Purchasing Division
 2019 Washington Street East
 Post Office Box 50130
 Charleston, WV 25305-0130

Request for Quotation

RFQ NUMBER
 COR61531

PAGE
 2

ADDRESS CORRESPONDENCE TO ATTENTION OF
 TARA LYLE
 304-558-2544

RFQ COPY
 TYPE NAME/ADDRESS HERE

Thrasher Engineering, Inc.
 30 Columbia Boulevard
 PO Box 1532
 Clarksburg, WV 26302-1532

DIVISION OF CORRECTIONS
 ST. MARYS CORRECTIONAL CENTER
 (COLIN ANDERSON CENTER)
 STATE ROUTE 2
 ST. MARYS, WV
 26170 304-558-2036

DATE PRINTED	TERMS OF SALE	SHIP VIA	F.O.B.	FREIGHT TERMS
04/20/2012				

BID OPENING DATE: 06/12/2012 BID OPENING TIME 01:30PM

LINE	QUANTITY	UOP	QAT NO	ITEM NUMBER	UNIT PRICE	AMOUNT
<p>REPRESENT MORE THAN ONE BIDDER.</p> <p>AN ATTENDANCE SHEET WILL BE MADE AVAILABLE FOR ALL POTENTIAL BIDDERS TO COMPLETE. THIS WILL SERVE AS THE OFFICIAL DOCUMENT VERIFYING ATTENDANCE AT THE MANDATORY PRE-BID. FAILURE TO PROVIDE YOUR COMPANY AND REPRESENTATIVE NAME ON THE ATTENDANCE SHEET WILL RESULT IN DISQUALIFICATION OF THE BID. THE STATE WILL NOT ACCEPT ANY OTHER DOCUMENTATION TO VERIFY ATTENDANCE. THE BIDDER IS RESPONSIBLE FOR ENSURING THEY HAVE COMPLETED THE INFORMATION REQUIRED ON THE ATTENDANCE SHEET. THE PURCHASING DIVISION AND THE STATE AGENCY WILL NOT ASSUME ANY RESPONSIBILITY FOR A BIDDER'S FAILURE TO COMPLETE THE PRE-BID ATTENDANCE SHEET. IN ADDITION, WE REQUEST THAT ALL POTENTIAL BIDDERS INCLUDE THEIR E-MAIL ADDRESS AND FAX NUMBER.</p> <p>ALL POTENTIAL BIDDERS ARE REQUESTED TO ARRIVE PRIOR TO THE STARTING TIME FOR THE PRE-BID. BIDDERS WHO ARRIVE LATE, BUT PRIOR TO THE DISMISSAL OF THE TECHNICAL PORTION OF THE PRE-BID WILL BE PERMITTED TO SIGN IN. BIDDERS WHO ARRIVE AFTER CONCLUSION OF THE TECHNICAL PORTION OF THE PRE-BID, BUT DURING ANY SUBSEQUENT PART OF THE PRE-BID WILL NOT BE PERMITTED TO SIGN THE ATTENDANCE SHEET.</p> <p>CANCELLATION: THE DIRECTOR OF PURCHASING RESERVES THE RIGHT TO CANCEL THIS CONTRACT IMMEDIATELY UPON WRITTEN NOTICE TO THE VENDOR IF THE COMMODITIES AND/OR SERVICES SUPPLIED ARE OF AN INFERIOR QUALITY OR DO NOT CONFORM TO THE SPECIFICATIONS OF THE BID AND CONTRACT HEREIN.</p> <p>BANKRUPTCY: IN THE EVENT THE VENDOR/CONTRACTOR FILES FOR BANKRUPTCY PROTECTION, THE STATE MAY DEEM THE CONTRACT NULL AND VOID, AND TERMINATE SUCH CONTRACT WITHOUT FURTHER ORDER.</p>						

SEE REVERSE SIDE FOR TERMS AND CONDITIONS

SIGNATURE <i>Tara Lyle</i>	TELEPHONE 304-624-4108	DATE June 11, 2012
TITLE Partner/Principal-in-Charge	FEIN 55-0633596-6	ADDRESS CHANGES TO BE NOTED ABOVE

WHEN RESPONDING TO REQ. INSERT NAME AND ADDRESS IN SPACE ABOVE LABELLED 'VENDOR'



State of West Virginia
 Department of Administration
 Purchasing Division
 2019 Washington Street East
 Post Office Box 50130
 Charleston, WV 25305-0130

Request for Quotation

RFQ NUMBER
 COR61531

PAGE
 3

ADDRESS CORRESPONDENCE TO ATTENTION OF:
 TARA LYLE
 304-558-2544

RFQ COPY

TYPE NAME/ADDRESS HERE

V
E
N
D
O
R

Thrasher Engineering, Inc.
 30 Columbia Boulevard
 PO Box 1532
 Clarksburg, WV 26302-1532

S
H
I
P
T
O

DIVISION OF CORRECTIONS
 ST. MARYS CORRECTIONAL CENTER
 (COLIN ANDERSON CENTER)
 STATE ROUTE 2
 ST. MARYS, WV
 26170 304-558-2036

DATE PRINTED	TERMS OF SALE	SHIP VIA	F.O.B.	FREIGHT TERMS
04/20/2012				

BID OPENING DATE: 06/12/2012 BID OPENING TIME 01:30PM

LINE	QUANTITY	UOP	QAT NO.	ITEM NUMBER	UNIT PRICE	AMOUNT
<p>ANY INDIVIDUAL SIGNING THIS BID IS CERTIFYING THAT: (1) HE OR SHE IS AUTHORIZED BY THE BIDDER TO EXECUTE THE BID OR ANY DOCUMENTS RELATED THERETO ON BEHALF OF THE BIDDER, (2) THAT HE OR SHE IS AUTHORIZED TO BIND THE BIDDER IN A CONTRACTUAL RELATIONSHIP, AND (3) THAT THE BIDDER HAS PROPERLY REGISTERED WITH ANY STATE AGENCIES THAT MAY REQUIRE REGISTRATION.</p> <p style="text-align: center;">NOTICE</p> <p>A SIGNED BID MUST BE SUBMITTED TO:</p> <p style="text-align: center;">DEPARTMENT OF ADMINISTRATION PURCHASING DIVISION BUILDING 15 2019 WASHINGTON STREET, EAST CHARLESTON, WV 25305-0130</p> <p>THE BID SHOULD CONTAIN THIS INFORMATION ON THE FACE OF THE ENVELOPE OR THE BID MAY NOT BE CONSIDERED:</p> <p>SEALED BID</p> <p>BUYER: ----- TL/32 -----</p> <p>RFQ. NO.: ----- COR61531 -----</p> <p>BID OPENING DATE: ----- 06/12/2012 -----</p> <p>BID OPENING TIME: ----- 1:30 PM -----</p>						

SEE REVERSE SIDE FOR TERMS AND CONDITIONS

SIGNATURE <i>Tara Lyle</i>	TELEPHONE 304-624-4108	DATE June 11, 2012
TITLE Partner/Principal-in-Charge	FAX 55-0633596-6	ADDRESS CHANGES TO BE NOTED ABOVE

WHEN RESPONDING TO RFQ, INSERT NAME AND ADDRESS IN SPACE ABOVE LABELED VENDOR



State of West Virginia
 Department of Administration
 Purchasing Division
 2019 Washington Street East
 Post Office Box 50130
 Charleston, WV 25305-0130

Request for Quotation

RFQ NUMBER
 COR61531

PAGE
 4

ADDRESS CORRESPONDENCE TO ATTENTION OF
 TARA LYLE
 304-558-2544

RFQ COPY

TYPE NAME/ADDRESS HERE

Thrasher Engineering, Inc.

30 Columbia Boulevard

PO Box 1532

Clarksburg, WV 26302-1532

DIVISION OF CORRECTIONS
 ST. MARYS CORRECTIONAL CENTER
 (COLIN ANDERSON CENTER)
 STATE ROUTE 2
 ST. MARYS, WV
 26170 304-558-2036

DATE PRINTED	TERMS OF SALE	SHIP VIA	F.O.B.	FREIGHT TERMS
04/20/2012				

BID OPENING DATE: 06/12/2012 BID OPENING TIME 01:30PM

LINE	QUANTITY	UOP	CAT. NO.	ITEM NUMBER	UNIT PRICE	AMOUNT
PLEASE PROVIDE A FAX NUMBER IN CASE IT IS NECESSARY TO CONTACT YOU REGARDING YOUR BID: 304-624-7831 ----- CONTACT PERSON (PLEASE PRINT CLEARLY): Jonathan Carpenter, PE ----- ***** THIS IS THE END OF RFQ COR61531 ***** TOTAL: _____						

SEE REVERSE SIDE FOR TERMS AND CONDITIONS

SIGNATURE <i>Jonathan Carpenter</i>	TELEPHONE 304-624-4108	DATE June 11, 2012
TITLE Partner/Principal-in-Charge	FEIN 55-0633596-6	ADDRESS CHANGES TO BE NOTED ABOVE

WHEN RESPONDING TO RFQ, INSERT NAME AND ADDRESS IN SPACE ABOVE LABELED VENDOR



State of West Virginia
 Department of Administration
 Purchasing Division
 2019 Washington Street East
 Post Office Box 50130
 Charleston, WV 25305-0130

Request for Quotation

RFQ NUMBER
 COR61531

PAGE
 1

ADDRESS CORRESPONDENCE TO ATTENTION OF
 TARA LYLE
 304-558-2544

RFQ COPY
 TYPE NAME/ADDRESS HERE

Thrasher Engineering, Inc.
 PO Box 1532
 30 Columbia Boulevard
 Clarksburg, WV 26302-1532

SHIP TO

DIVISION OF CORRECTIONS
 ST. MARYS CORRECTIONAL CENTER
 (COLIN ANDERSON CENTER)
 STATE ROUTE 2
 ST. MARYS, WV
 26170 304-558-2036

DATE PRINTED	TERMS OF SALE	SHIP VIA	F.O.B.	FREIGHT TERMS
05/31/2012				

BID OPENING DATE: 06/12/2012 BID OPENING TIME 01:30PM

LINE	QUANTITY	UOP	QAT NO.	ITEM NUMBER	UNIT PRICE	AMOUNT
				ADDENDUM NO. 1		
				1. QUESTIONS AND ANSWERS ARE ATTACHED.		
				2. ADDENDUM ACKNOWLEDGEMENT IS ATTACHED. THIS DOCUMENT SHOULD BE SIGNED AND RETURNED WITH YOUR BID. FAILURE TO SIGN AND RETURN MAY RESULT IN DISQUALIFICATION OF YOUR BID.		
				END OF ADDENDUM NO. 1		
001	1	JB		906-00-00-001		
				ARCHITECT/ENGINEERING SERVICES, PROFESSIONAL		
				***** THIS IS THE END OF RFQ COR61531 ***** TOTAL:		

SEE REVERSE SIDE FOR TERMS AND CONDITIONS

SIGNATURE <i>[Signature]</i>	TELEPHONE 304-624-4108	DATE June 11, 2012
TITLE Partner/Principal-in-Charge	FEIN 55-0633596-6	ADDRESS CHANGES TO BE NOTED ABOVE

WHEN RESPONDING TO RFQ, INSERT NAME AND ADDRESS IN SPACE ABOVE LABELED 'VENDOR'



State of West Virginia
 Department of Administration
 Purchasing Division
 2019 Washington Street East
 Post Office Box 50130
 Charleston, WV 25305-0130

Request for Quotation

RFQ NUMBER
 COR61531

PAGE
 1

ADDRESS CORRESPONDENCE TO ATTENTION OF
 TARA LYLE
 304-558-2544

RFQ COPY

TYPE NAME/ADDRESS HERE

Thrasher Engineering, Inc.

30 Columbia Boulevard

PO Box 1532

Clarksburg, WV 26302

DIVISION OF CORRECTIONS
 ST. MARYS CORRECTIONAL CENTER
 (COLIN ANDERSON CENTER)
 STATE ROUTE 2
 ST. MARYS, WV
 26170
 304-558-2036

DATE PRINTED	TERMS OF SALE	SHIP VIA	F.O.B.	FREIGHT TERMS
06/07/2012				

BID OPENING DATE: 06/19/2012 BID OPENING TIME 01:30PM

LINE	QUANTITY	UOP	CAT NO.	ITEM NUMBER	UNIT PRICE	AMOUNT
				ADDENDUM NO. 2		
				1. THIS ADDENDUM ISSUED TO ADD TERMS AND CONDITIONS PER THE ATTACHED.		
				2. TO MOVE THE BID OPENING DATED FROM 06/12/2012 TO 06/19/2012.		
				3. ADDENDUM ACKNOWLEDGEMENT IS ATTACHED. THIS DOCUMENT SHOULD BE SIGNED AND RETURNED WITH YOUR BID. FAILURE TO SIGN AND RETURN MAY RESULT IN DISQUALIFICATION OF YOUR BID.		
				END OF ADDENDUM NO. 2		
0001	1	JB		906-00-00-001		
				ARCHITECT/ENGINEERING SERVICES, PROFESSIONAL		
				***** THIS IS THE END OF RFQ COR61531 ***** TOTAL:		

SEE REVERSE SIDE FOR TERMS AND CONDITIONS

SIGNATURE <i>Tara Lyle</i>	TELEPHONE 304-624-4108	DATE June 15, 2012
TITLE Partner/Principal-in-Charge	FEIN 55-0633596-6	ADDRESS CHANGES TO BE NOTED ABOVE

WHEN RESPONDING TO RFQ, INSERT NAME AND ADDRESS IN SPACE ABOVE LABELLED 'VENDOR'

EXHIBIT 10

REQUISITION NO.: COR61531

ADDENDUM ACKNOWLEDGEMENT

I HEREBY ACKNOWLEDGE RECEIPT OF THE FOLLOWING CHECKED ADDENDUM(S) AND HAVE MADE THE NECESSARY REVISIONS TO MY PROPOSAL, PLANS AND/OR SPECIFICATION, ETC.

ADDENDUM NO.'S:

NO. 1

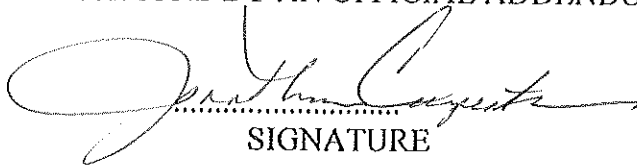
NO. 2

NO. 3

NO. 4

NO. 5

I UNDERSTAND THAT FAILURE TO CONFIRM THE RECEIPT OF THE ADDENDUM(S) MAY BE CAUSE FOR REJECTION OF BIDS. VENDOR MUST CLEARLY UNDERSTAND THAT ANY VERBAL REPRESENTATION MADE OR ASSUMED TO BE MADE DURING ANY ORAL DISCUSSION HELD BETWEEN VENDOR'S REPRESENTATIVES AND ANY STATE PERSONNEL IS NOT BINDING. ONLY THE INFORMATION ISSUED IN WRITING AND ADDED TO THE SPECIFICATIONS BY AN OFFICIAL ADDENDUM IS BINDING.


SIGNATURE

Thrasher Engineering, Inc.
COMPANY

June 15, 2012
DATE

STATE OF WEST VIRGINIA
Purchasing Division

PURCHASING AFFIDAVIT

West Virginia Code §5A-3-10a states: No contract or renewal of any contract may be awarded by the state or any of its political subdivisions to any vendor or prospective vendor when the vendor or prospective vendor or a related party to the vendor or prospective vendor is a debtor and the debt owed is an amount greater than one thousand dollars in the aggregate.

DEFINITIONS:

"Debt" means any assessment, premium, penalty, fine, tax or other amount of money owed to the state or any of its political subdivisions because of a judgment, fine, permit violation, license assessment, defaulted workers' compensation premium, penalty or other assessment presently delinquent or due and required to be paid to the state or any of its political subdivisions, including any interest or additional penalties accrued thereon.

"Debtor" means any individual, corporation, partnership, association, limited liability company or any other form or business association owing a debt to the state or any of its political subdivisions. "Political subdivision" means any county commission; municipality; county board of education; any instrumentality established by a county or municipality; any separate corporation or instrumentality established by one or more counties or municipalities, as permitted by law; or any public body charged by law with the performance of a government function or whose jurisdiction is coextensive with one or more counties or municipalities. "Related party" means a party, whether an individual, corporation, partnership, association, limited liability company or any other form or business association or other entity whatsoever, related to any vendor by blood, marriage, ownership or contract through which the party has a relationship of ownership or other interest with the vendor so that the party will actually or by effect receive or control a portion of the benefit, profit or other consideration from performance of a vendor contract with the party receiving an amount that meets or exceeds five percent of the total contract amount.

EXCEPTION: The prohibition of this section does not apply where a vendor has contested any tax administered pursuant to chapter eleven of this code, workers' compensation premium, permit fee or environmental fee or assessment and the matter has not become final or where the vendor has entered into a payment plan or agreement and the vendor is not in default of any of the provisions of such plan or agreement.

Under penalty of law for false swearing (*West Virginia Code §61-5-3*), it is hereby certified that the vendor affirms and acknowledges the information in this affidavit and is in compliance with the requirements as stated.

WITNESS THE FOLLOWING SIGNATURE

Vendor's Name: Thrasher Engineering, Inc.

Authorized Signature: *[Signature]* Date: June 11th, 2012

State of West Virginia

County of Harrison, to-wit:

Taken, subscribed, and sworn to before me this 11 day of JUNE, 2012

My Commission expires 2/16/2014, 2014.

AFFIX SEAL HERE

NOTARY PUBLIC *[Signature]*

