

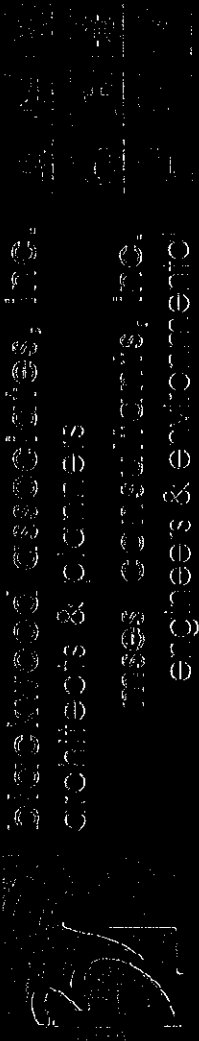
Blackburn & Associates, Inc.  
Architects & Planners  
10000 Old Georgetown Road  
Bethesda, Maryland 20814  
Tel: 301-987-1000  
Fax: 301-987-1001  
www.blackburn.com

# Architectural/Engineering Services For Department of Health & Human Resources

Jackie Withrow Hospital - Review  
Ventilation System for Repairs  
Beckley, West Virginia

RECEIVED  
2000 SEP -8 A 10: 13  
PURCHASING DIVISION  
STATE OF WV

Expression of Interest  
RFQ: PSHT1017



August 28, 2010

WV Department of Health and Human Resources  
Jackie Withrow Hospital  
105 South Eisenhower Drive  
Beckley, WV 25801

Re: Architectural/Engineering Services for RFQ: PSH11017  
Review of Ventilation System for Repairs at Jackie Withrow Hospital in Beckley, WV

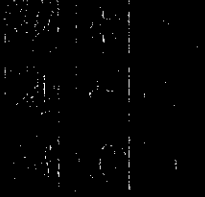
Dear Ms. Wagner:

**Blackwood Associates, Inc. (BAI)** and **MSES Consultants, Inc. (MSES)** are pleased to submit this expression of interest in providing professional services for the Review of Ventilation System project at Jackie Withrow Hospital in Beckley, WV for the Department of Health and Human Resources.

**Blackwood Associates, Inc.** is an Architectural and Planning firm located in Fairmont, WV and would provide all project planning and design. **MSES Consultants, Inc.**, is an Engineering firm located in Clarksburg and Huntington, West Virginia, providing all engineering disciplines. The two firms have merged operations to become the largest full service architectural/engineering provider in West Virginia.

The **BAI/MSES** firm offers a combined professional staff of over 80 people, with registered architects, engineers, LEED accredited professionals, scientists, technicians and support personnel. **BAI/MSES** is a single source that can provide the professional disciplines required for projects of this nature. Professional services will be managed and performed by full-time, in-house personnel out of the Fairmont, Clarksburg and Huntington offices.

The **BAI/MSES** firm practice is based upon the philosophy of comprehensive service, providing our clients with a single point of responsibility. We believe that the building sciences of architecture and engineering cannot be separated. By bringing architecture, interior design, engineering, environmental, and management services together in a single firm, we ensure efficient and effective service. Another advantage to an Owner is **BAI/MSES's** extensive experience in evaluation of existing buildings, especially where environmental issues may be a potential concern. **BAI/MSES** is your provider of the total array of professional services including LEED, environmental and hygienist services where needed.



**blackwood associates, inc.**  
 architects & planners

**mSES consultants, inc.**  
 engineers & environmental

**BAI** and **MSES** are West Virginia firms with a combined 81 years of providing architecture and engineering services to agencies throughout West Virginia. Our 18 years of successful practice as a team is the direct result of our ability to provide all professional disciplines necessary for any governmental project. **BAI/MSES** have extensive experience in the design of government and medical facilities of every type, including recent projects at Jackie Withrow Hospital.

We can assure a work force of sufficient size to provide immediate and comprehensive involvement on this project. We look forward to having the opportunity to present our qualifications and approach on a personal basis. Thank you for your consideration.

Sincerely,

**BLACKWOOD ASSOCIATES, INC.**  
**ARCHITECTS AND PLANNERS**



**JAMES K. BLACKWOOD, AIA**  
**PRINCIPAL**

**Blackwood Associates, Inc.**  
 Architects and Planners  
 611 East Park Avenue  
 Fairmont, WV 26554  
 304-366-1580 304-366-1537 fax  
[jim@wwarchitects.com](mailto:jim@wwarchitects.com)  
<http://www.wwarchitects.com>

**MSES Consultants, Inc.**  
 Engineers and Environmental  
 609 West Main Street  
 Clarksburg, WV 26302  
 304-624-9700 304-622-0981 fax  
<http://www.msesinc.com>

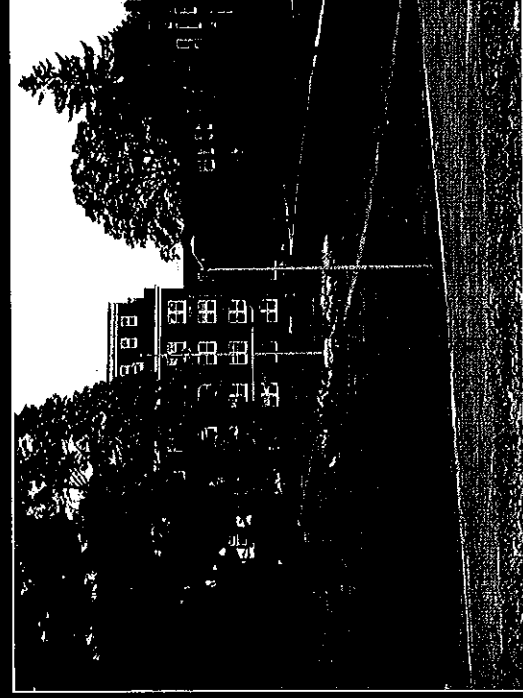


Blackwood Associates, Inc.  
architects & planners  
MSES Consultants, Inc.  
engineers & environmental

## About the Firm

The **Blackwood Associates, Inc. (BAI)** and **MSES Consultants, Inc. (MSES)** mission is to provide full professional service necessary to assure successful completion of a project. Our practice is based upon the philosophy of comprehensive service, providing our clients with a single point of responsibility. By bringing architecture, interior design and engineering together into a single firm, we ensure efficient and effective service.

The firm maintains a staff of highly trained, educated and experienced personnel, including all of the technical disciplines necessary for this project. We can accommodate any timetable for programming through completion of construction documents and our combined force of specialized professionals would allow **BAI/MSES** to begin a full range of services immediately for this project.



Jackie Withrow Hospital (formerly Pinecrest Hospital)  
Beckley, WV

## Blackwood Associates, Inc.

**Blackwood Associates, Inc.** was originally established as a West Virginia Corporation in 1959. The firm was incorporated as L.D. Schmidt & Son, Architects and Engineers, under the direction of the late Louis D. Schmidt. In 1967, James Blackwood joined the firm as an intern architect and project designer. In 1972, James Blackwood became vice-president of L.D. Schmidt & Son and then assumed the presidency of the Corporation in 1975. In 1981, the Corporate name was changed to Blackwood Associates, Inc. Architects and Planners, to reflect the practice ownership.



Blackwood Associates, Inc.  
architects & planners  
MSES consultants, Inc.  
engineers & environmental

## Blackwood Associates, Inc.

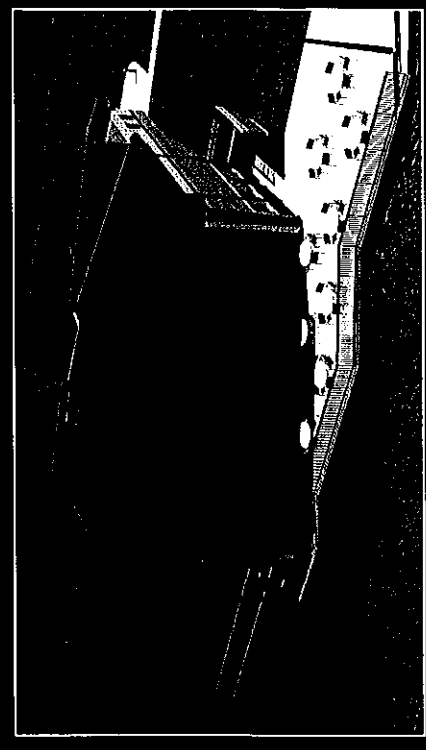
Since that time, the firm has maintained leadership in the design of state-of-the-art governmental, educational, medical, residential, recreational, commercial and historical adaptive reuse facilities. **BAI** has successfully completed over 600 projects with a construction value in excess of \$600 million in the last 20 years.

**BAI/MSES** is familiar with all aspects of new construction, renovation, build-out design, life safety codes, BOCA codes, and Federal and State codes and ordinances applicable for the proposed project. In addition, we maintain LEED accredited professionals in multiple disciplines to meet quality and performance standards. The benefits of this experience and diligence are perhaps most effectively demonstrated by our large number of long term clients and continued successful practice in West Virginia.

**BAI/MSES** maintains an in-house staff of professionals whose expertise covers all aspects of architecture, planning and engineering practice. We recognize the importance of computers for complete and efficient project organization, communication and document management. All word processing, design, drafting, building analysis, virtual reality, and websites are developed by the firm using cutting edge technology. This same technology allows **BAI/MSES** to provide an Owner with project work product in a usable format at project completion.

We strongly adhere to the American Institute of Architects Code of Professional Conduct. We serve our clients competently and in a professional manner, and exercise unprejudicial and unbiased judgment on their behalf.

**BAI/MSES** have never had a project go uncompleted as a result of inadequate staffing, inability to meet Owner requirements or failure to meet established time frames. This commitment of professionalism applies to every project and client.



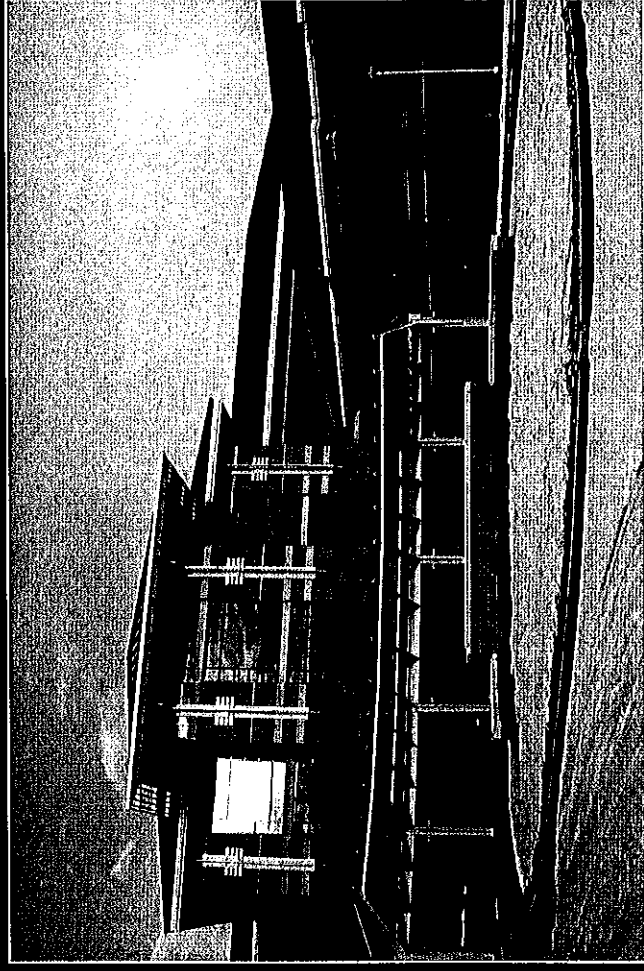


blackwood associates, inc.  
architects & planners  
mSES consultants, inc.  
engineers & environmental

## MSES Consultants, Inc.

MSES Consultants, Inc. is a multi-disciplinary engineering, architectural support, environmental, planning, and project management firm, headquartered in Clarksburg, West Virginia. We have amassed 33 years of successful project experience, serving private and public clients since our initial founding as a small, 3-person environmental consulting firm in 1976. MSES expanded rapidly to become a provider of total engineering and environmental services by the year 1978, and we have seen our ranks swell, with a current professional staff of 70, including 12 registered engineers, 2 Certified Industrial Hygienists, 4 asbestos inspectors, 4 asbestos air clearance monitors, 1 lead based paint risk assessor, 6 professional land surveyors, and a diverse roster of professionals, scientists, and support personnel.

MSES personnel have completed more than 10,000 assignments to date. We have been heavily focused on building construction, renovations, and project management since our founding in 1976. Many of our projects have involved site selection studies, designs (HVAC, plumbing, electrical, civil, structural, mechanical, lighting, fire systems, security, and telecommunications), inspections, geotechnical investigations, assessments and reviews, environmental sampling and analysis, property evaluations and appraisals, and project management services throughout West Virginia and surrounding states. MSES also has the ability to address environmental issues that may occur during construction.



WV Veterans 120 Bed Nursing Facility  
Clarksburg, WV



**Blackwood Associates, Inc.**  
 architects & planners  
 MSE Consultants, Inc.  
 engineers & environmental

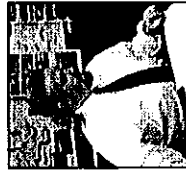
**LEED Accredited Professionals**

BAI/MSES is proud to be a member of the United States Green Building Council and for many years has incorporated a broadening spectrum of sustainable design strategies as part of our standard operations. Green building practices can greatly reduce the negative environmental impact of the construction process, and green design can provide more "livable" buildings with healthier, more productive environments and lower building maintenance and operating costs. Achieving a LEED certification for a structure is an involved process that requires professional assistance, and proper planning is essential from the very beginning of a project. With two LEED Accredited Professionals on staff consideration of the Leadership in Energy and Environmental Design philosophy is integral to our design and planning process. Our LEED APs are experienced in architectural and mechanical design and construction and are proponents of incorporating the green design philosophy into real world building projects.



**THINK GREEN**

**BAI/MSES LEED Capabilities**

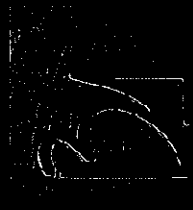


**Project Design & Planning**  
**Kenton Blackwood, LEED<sup>AP</sup>, Associate AIA**



**Mechanical Engineering/HVAC**  
**Dave Skeen, PE, LEED<sup>AP</sup>**

**Blackwood Associates, Inc./MSES Consultants, Inc.**  
 The Largest Full Service Professional Architectural/Engineering Firm in West Virginia



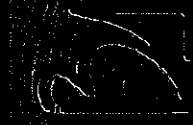
Blackwood Associates, Inc.  
architects & planners  
Blackwood Consultants, Inc.  
engineers & environmentalists



## Disciplines

- ▣ Architectural
- ▣ Civil Engineering
- ▣ Structural Engineering
- ▣ Electrical Engineering
- ▣ Mechanical Engineering
- ▣ Chemical Engineering
- ▣ Urban/Regional Planning
- ▣ Mining Engineering
- ▣ Landscape Architecture
- ▣ Geologists
- ▣ Sanitary Engineering
- ▣ LEED Professionals
- ▣ Soils Engineering
- ▣ Surveyors
- ▣ Transportation Engineering
- ▣ NACE Corrosion Engineering
- ▣ Environmental Science Engineering
- ▣ Hydrologists
- ▣ Ecologists
- ▣ Economists
- ▣ Construction Inspectors
- ▣ CAD Technicians
- ▣ Certified Safety Professionals
- ▣ Virtual Reality & Web Designers





**blackwood associates, inc.**  
 architects & planners  
**mSES CONSULTANTS, INC.**  
 engineers & environmental



## Professional Education

BAI/MSES employ a professional staff of full-time professionals with experience in numerous disciplines.

BAI/MSES professionals are supported by the latest computers and computer software, electronic and satellite survey, computer-aided drafting and design, in field data collectors, and our in-house graphic, web development and reproduction center.

Category	Number of Employees	Associate Degrees	Bachelor Degrees	Advanced Degrees
Administrative	6	2	3	--
Architect	2	--	2	--
Architect-In-Training	2	--	2	--
Chemical Engineer	1	--	1	1
Chemist	1	--	1	--
Civil Engineer	3	--	3	--
Resident Construction Engineer	2	1	1	--
CAD/Design Draftsman	2	--	2	--
CAD/Drafter	5	3	1	--
Environmental Geographer (GIS)	1	--	1	--
Ecologist	1	--	1	1
Meteorologist	1	--	1	--
Electrical Engineer	3	--	3	--
Geologist	1	--	1	--
Hydrologist	1	--	1	1
Landscape Architect	1	--	1	--
Environmental Engineer	2	--	2	1
Mechanical Engineer	2	--	2	--
Mining Engineer	2	--	2	1
Industrial Engineer	1	--	1	--
Sanitary Engineer	2	--	2	--
Soil Engineer	2	--	2	--
Transportation Engineer	1	--	1	--
Certified Industrial Hygienist	2	--	2	--
Certified Safety Professionals	2	--	2	--
Safety Engineer	1	--	1	1
Land and Right-Of-Way Agents	3	--	3	--
Paralegal	2	--	2	--
Surveyors	6	4	2	--
Economist	1	--	1	1
Biologist	2	--	2	2
Botanist	1	--	1	1
Engineering Technicians	4	--	1	--
Survey Support	11	3	1	--
Certified Web Designer	1	4	--	--
		--	1	--

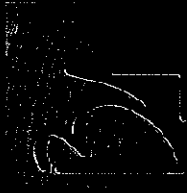


**blackwood associates, inc.**  
**architects & planners**  
**regulatory services, inc.**  
**engineers & environmental**

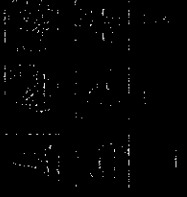
## Professional Registrations

Provided is a listing, by state, of the professional disciplines and type of registration per each state or national registry:

Discipline	BAU/AMES Staff Members Per State											National		
	VT	NV	PA	MD	VA	TN	KY	OH	NC	TX	CA			
<b>Architects</b>	2	0	1	1	1	0	0	2	1-NCARB					
<b>Engineers</b>	3	1	2	1	3	0	3	3						
Civil	1	0	1	0	1	0	1	1						
Chemical	3	1	2	1	2	1	1	2						
Electrical	2	1	2	1	2	1	1	2						
Mechanical	2	1	1	1	1	1	1	1						
Environmental	1	0	1	0	1	0	1	0						
Structural	1	0	1	1	1	0	1	1						
Safety	1	0	1	1	1	0	1	1						
Mining	1	0	1	1	1	0	1	1						
<b>Surveyor</b>	8	3	3	3	0	2	3	3						
<b>LEED Accredited Professional</b>	2	--	--	--	1	--	--	--						
<b>Geologist</b>	--	--	--	--	--	--	--	--						
<b>Asbestos</b>	4	--	0	0	1	0	0	1						
Inspectors	4	--	0	0	1	0	0	1						
Samplers	4	--	0	0	1	0	0	1						
Planner	4	--	0	0	1	0	0	1						
Manager	4	--	0	0	1	0	0	1						
<b>Lead Risk Assessor</b>	1	--	--	--	--	--	--	--						
<b>Licensed Remediation Specialist</b>	1	2	--	--	--	--	--	4						
<b>Underground Storage Tank Inspector</b>	4	0	0	0	0	0	0	0						
Designer/Installer	2	0	0	0	0	0	0	0						
Catholic Protection Class D/E	4	0	0	0	0	0	0	0						
<b>Certified Monitor Well Designer/Driller</b>	4	--	2	0	--	--	0	--						
<b>Certified Safety Professional</b>	--	--	--	--	--	--	--	--						
<b>Certified Industrial Hygienist</b>	--	--	--	--	--	--	--	--					2	
<b>Certified Landfill Operator (SWANA)</b>	--	--	--	--	--	--	--	--					2	
<b>NACE Certified</b>	--	--	--	--	--	--	--	--					3	
Corrosion Technician	--	--	--	--	--	--	--	--					3	
Sr. Corrosion Technologist	--	--	--	--	--	--	--	--					3	
<b>Licensed Real Estate Agent</b>	2	--	--	--	--	--	--	--					--	1



**blackwood associates, inc.**  
architects & planners  
17888 Old Republic, Inc.  
engineers & environmental



## References

William R. Sharpe, Jr. Hospital  
Planning of Multiple Projects  
Contact: Mr. Kevin Stalaker  
1-304- 269-1210 ext. 280 or [kevin.p.stalaker@wv.gov](mailto:kevin.p.stalaker@wv.gov)

Marion County Board of Education  
Planning of Multiple Projects  
Contact: Mr. Tom Deadrick, Superintendent  
1-304-367-2107 or [ideadrick@access.k12.wv.us](mailto:ideadrick@access.k12.wv.us)

WV Division of Veterans Affairs  
West Virginia State Veterans Cemetery, Institute, WV  
Contact: Mr. Keith Gwinn, Director  
1321 Plaza East - Suite 109 - Charleston, WV  
1-304-558-3661 or [wvvetaff.aol.com](http://wvvetaff.aol.com)

State of West Virginia  
Division of Veterans Affairs  
West Virginia Veterans Nursing Facility, Clarksburg, WV (VA)  
Contact: Mr. Kevin Crickard, Director  
1-304-626-1600 or [kevin.b.crickard@wv.gov](mailto:kevin.b.crickard@wv.gov)

Harrison County Parks and Recreation  
Harrison County 4-H Facility  
Contact: Mr. Mike Sock, Director  
1-304-624-8619 or [sjcoll@access.k12.wv.us](mailto:sjcoll@access.k12.wv.us)

Mineral County Board of Education  
Planning of Multiple Projects  
Contact: Mr. Skip Hackworth, Superintendent  
1-304-788-4200 or [thackwor@access.k12.wv.us](mailto:thackwor@access.k12.wv.us)

Human Resource Development Foundation, Inc.  
Planning of Multiple Projects including major renovations  
Contact: Mr. Kenny Purdue, President - WV AFL-CIO  
1-304-344-3557 or [kpurdue@wvaficio.org](mailto:kpurdue@wvaficio.org)

 **blackwood associates, inc.**  
architects & planners  
**misses consultants, inc.**  
engineers & environmental

## Key Personnel

All of the following key professional staff members will be assigned to work on the project. Their specific percentage of time devoted to the contract will vary according to specific project needs.

### ARCHITECTURAL

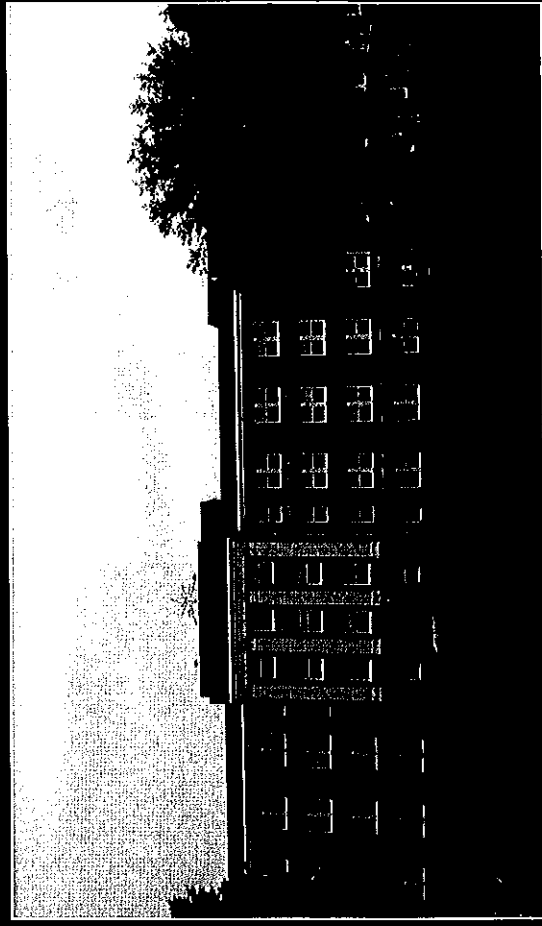
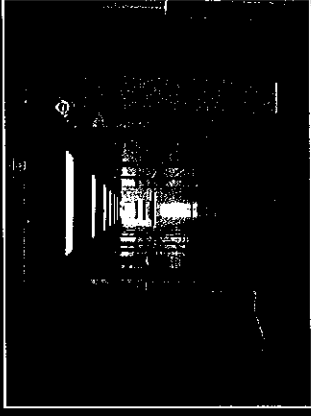
- Administrative • Architectural Design
  - James K. Blackwood, AIA, NCARB – Project Principal
  - Pamela J. Wean, AIA – Project Architect
- Architectural Team • Code Compliance • LEED
  - Kenton Q. Blackwood, LEEDAP, Assoc. AIA – Vice President
  - Stacey L. Bower, Assoc. AIA – Designer

### ENGINEERING

- Administrative
  - Lawrence M. Rine – Principal and Quality Assurance
  - Jeffrey T. Wise – Managing Director
- Environmental
  - John J. Keeling, PE, WV, CIH, CSP, QEP
- Civil • Site Engineering
  - Rod D. Kidd, BSCE
- Mechanical Engineering • HVAC
  - David L. Skeen, PE, LEEDAP
- Electrical Engineering
  - Jeffrey K. Pauley, PE, PS

Blackwood Associates, Inc.  
architects & planners  
MSES Consultants, Inc.  
engineers & environmental

## DHHR Projects



### Department of Health and Human Resources Three Year Agreement for A/E Services

Blackwood Associates, Inc./ MSES Consultants, Inc. is working with the State of West Virginia Department of Health and Human Resources to provide architectural/ engineering services for seven hospital facilities throughout West Virginia. Project basic services are determined after facility assessments.

Some projects require review by the State Fire Marshal, OHFLAC and WVHCA.

#### TYPICAL PROJECTS INCLUDE:

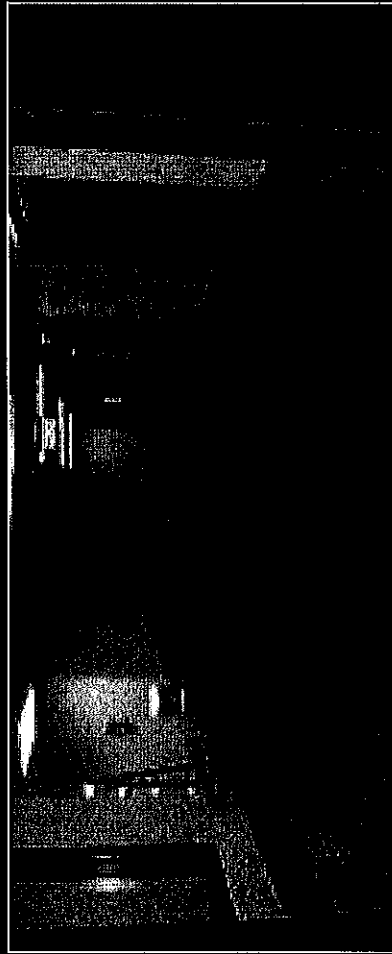
- Construction of a 5 Bed TB Unit at **Pinecrest Hospital** in Beckley (completed)
- Major Exterior Upgrades at **Hopemont Hospital** in Preston County (completed)
- Chiller Replacement at **Mildred Mitchell-Bateman Hospital** in Huntington (completed)
- Fire Alarm and Nurse Call Replacement at **Pinecrest Hospital** (completed)
- Water Tank investigation at **William R. Sharpe Hospital** in Weston (completed)



## DHFR Project

### Renovations to Mildred Mitchell-Bateman Hospital Huntington, WV

Blackwood Associates, Inc./MSES Consultants, Inc. was selected by the State of West Virginia Department of Health and Human Resources to provide architectural/ engineering services for Renovations to the Mildred Mitchell-Bateman Hospital in Huntington, West Virginia. BAI assisted the Hospital in preparation of a Certificate of Need in accordance with State of West Virginia Health Care Authority requirements.



#### WORK WILL INCLUDE:

Renovations for a new 35 Bed Patient Unit to Building 2 cost \$4,579,500.00. This new unit is being constructed in existing space that was previously gutted.

Work includes renovation of approx. 20,000 sq. ft., window replacement, elevator replacement, & health/safety upgrades.

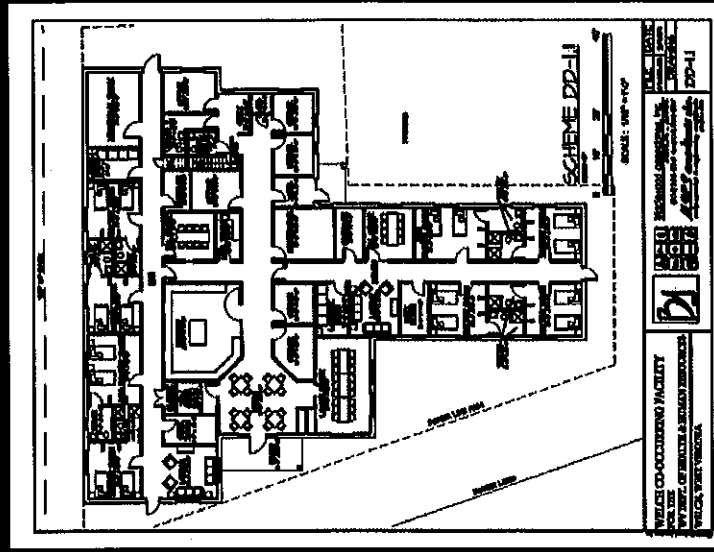
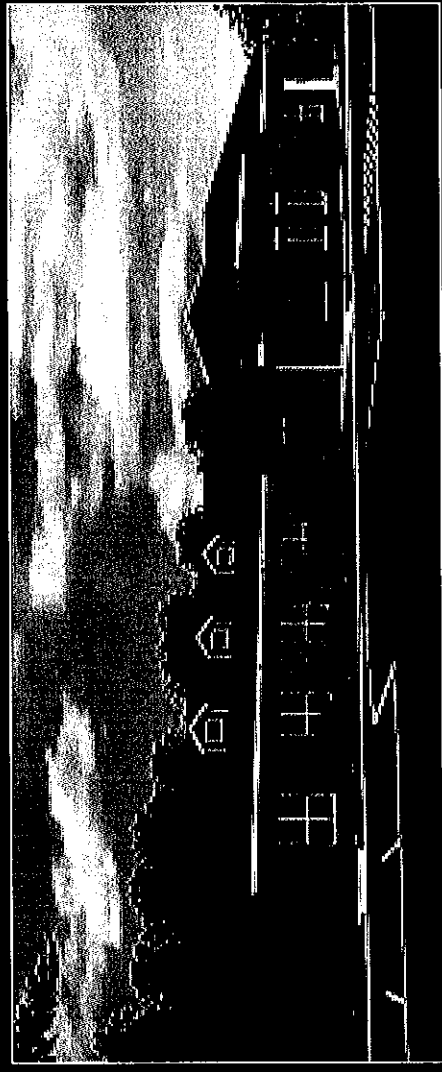
Office of Health Facility Licensure and Certification review and approval was required.



Blackwood Associates, Inc.  
 architects & planners  
 MSES Consultants, Inc.  
 engineers & environmental

# DHHR Project

## New Co-Occurring Facility at Jackie Withrow Hospital Beckley, West Virginia

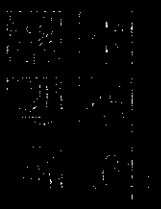


Blackwood Associates, Inc./MSES Consultants, Inc. were selected by the State of West Virginia Department of Health and Human Resources to provide architectural/engineering services for the new Co-Occurring Facility at Jackie Withrow Hospital to be located in Beckley, WV.

Work includes site preparation and construction of a 8,300 SF 16-bed group home with slab on grade, wood stud and brick walls and wood truss roof. The project is scheduled to bid in mid 2010.



**blackwood associates, inc.**  
 architects & planners  
 11555 Greenbriar, Inc.  
 engineers & environmental



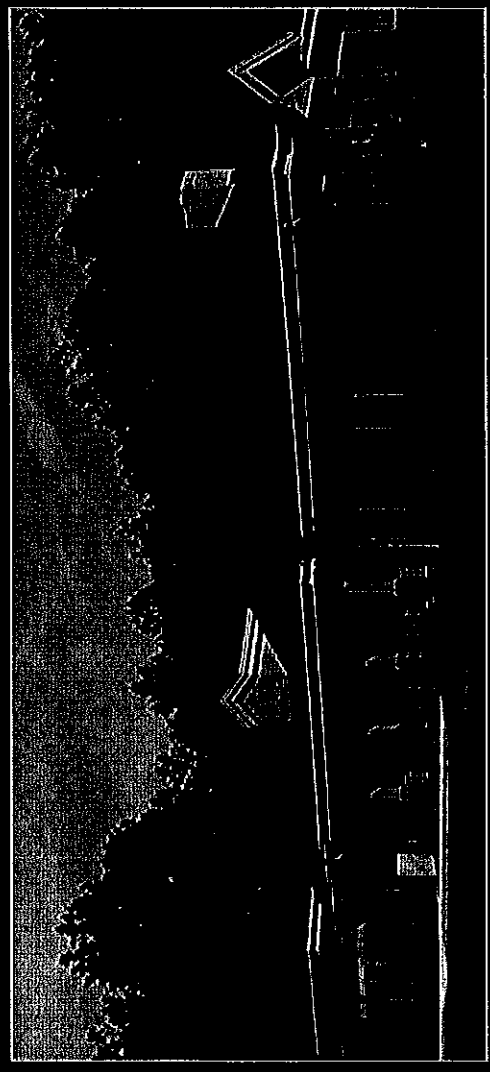
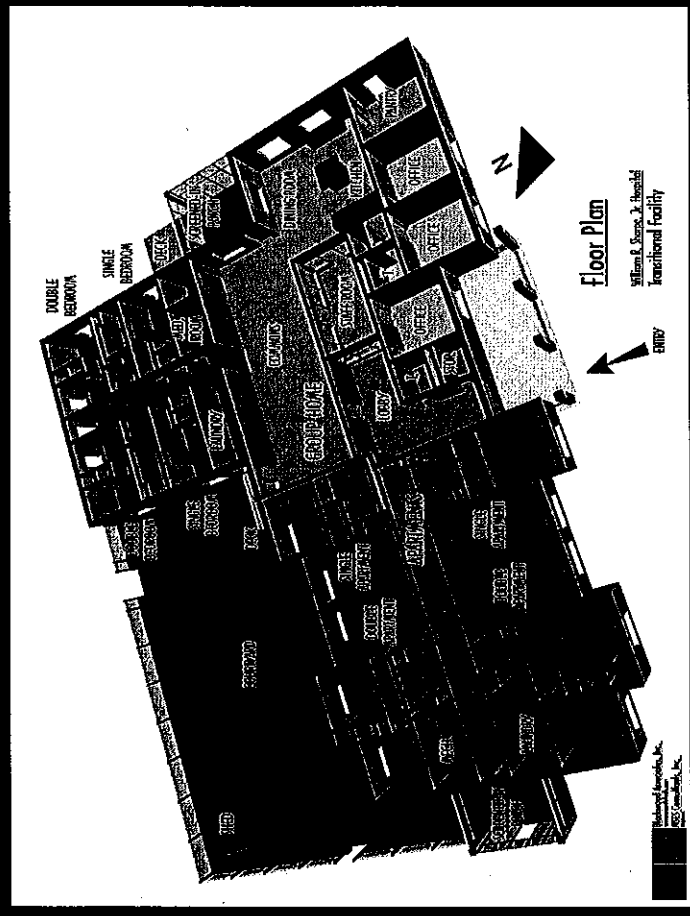
**MSES Consulting, Inc.**  
 engineers & environmental

# DHHR Project

## William R. Sharpe, Jr. Hospital Transitional Facility Weston, West Virginia

Blackwood Associates, Inc./MSES Consultants, Inc. were selected by the State of West Virginia Department of Health and Human Resources to provide architectural/ engineering services for the new William R. Sharpe, Jr. Hospital Transitional Facility. The step-down unit is on the Sharpe Hospital campus and provides a facility where residents can transition to return to a normal life.

The project consisted of construction of a 7,850 sq. ft. single-story structure located away from the main Hospital. The project included two single-story accessory storage structures. DHHR Office of Health Facility Licensure and Certification oversight was required.







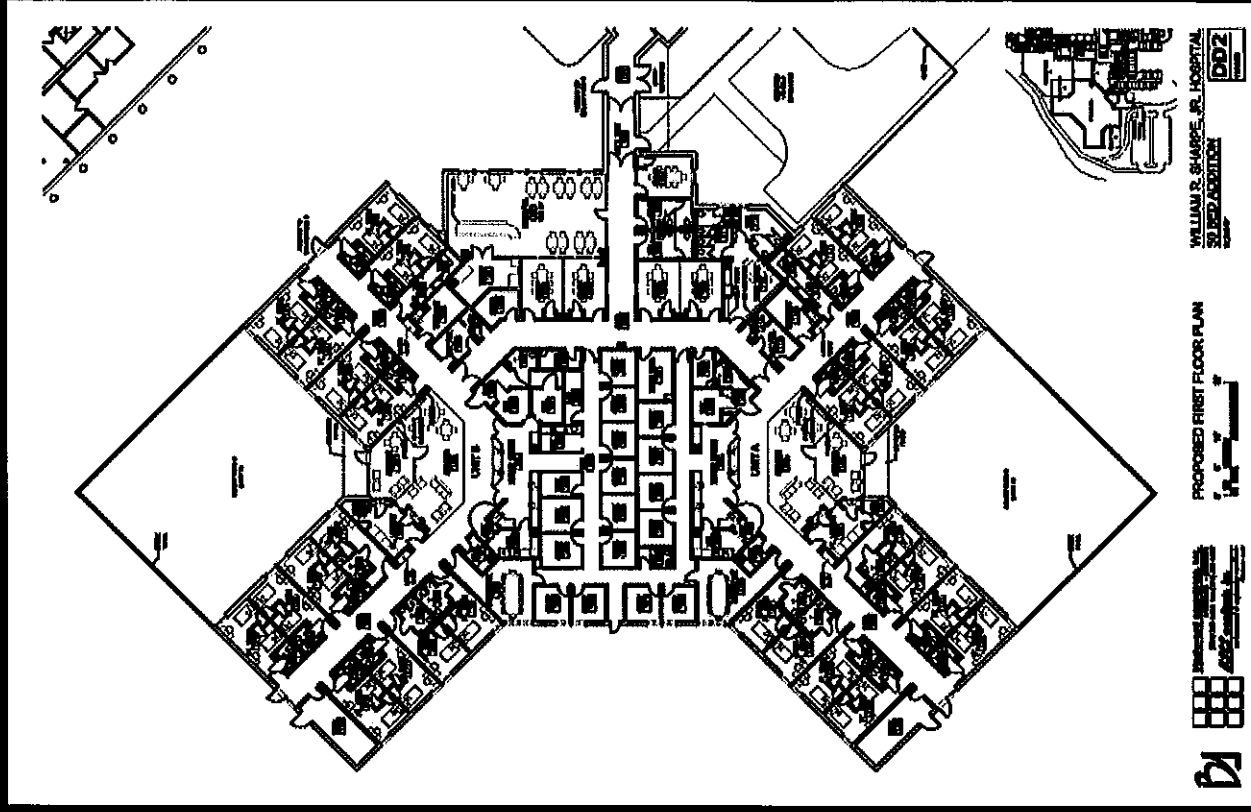
Blackwood Associates, Inc.  
architects & planners

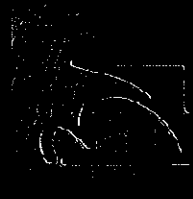
1000 10th Street, Suite 100  
Martinsburg, WV 26150  
304-293-1111  
www.blackwoodinc.com

SHAR Project

**William R. Sharpe, Jr. Hospital  
New 50 Bed Patient Unit  
Weston, West Virginia**

**Blackwood Associates, Inc./MSES Consultants, Inc.** were selected by the State of West Virginia Department of Health and Human Resources to provide architectural/ engineering services for the new 50 Bed Forensic Patient Unit at William R. Sharpe, Jr. Hospital in Weston, WV. The Facility has been designed with separate pods and outdoor spaces to allow the Owner complete flexibility. The on-grade addition will provide a secure entrance for receiving adjudicated patients. The ± 25,000 SF project has been designed and is ready for development of construction documents.





**blackwood associates, inc.**  
 architects & planners

**msee consultants, inc.**  
 engineers & environmental

**Johnston School Renovations  
 Industrial, West Virginia  
 State of West Virginia**

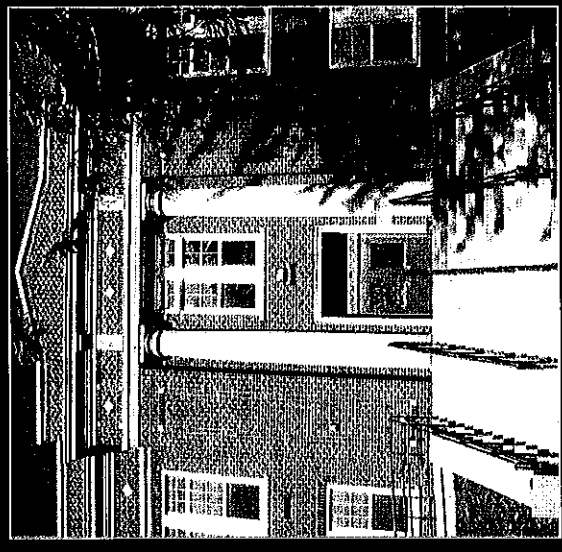
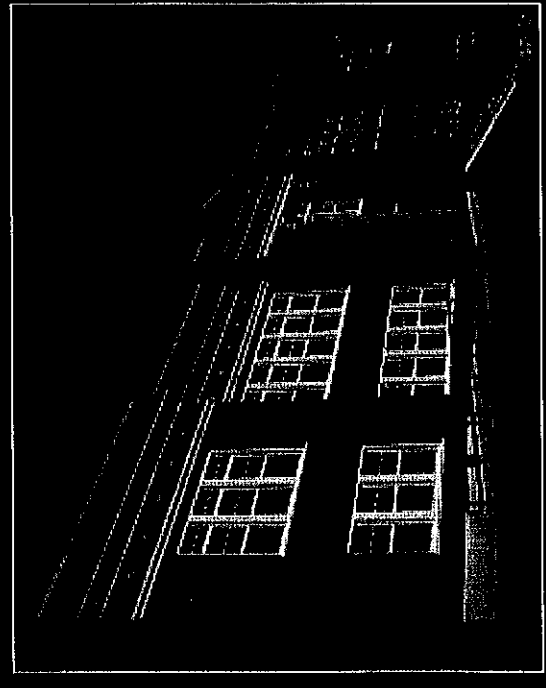
Blackwood Associates, Inc./MSES Consultants, Inc. were selected by the WV Division of Juvenile Services to evaluate and develop construction documents for renovations to an old school building located on the grounds of the WV Industrial Home for Youth in Industrial, WV. The purpose of the study was to determine the feasibility of renovating the structure to again serve as an educational facility.

The final BAI/MSES report and cost estimates led to a recommendation to renovate the present building in lieu of constructing a new facility.

BAI/MSES completed construction documents, bidding and the \$2,568,000 project started construction in April 2006. Construction is complete and the building is now occupied by the educational staff.

**The project included HVAC replacement and energy upgrades.**

**Additional Experience**



WV Division of Juvenile Services  
 Contact: Joe Merendino, Superintendent  
 1-304-782-2371





**blackwood associates, inc.**  
 architects & planners  
 mses environmental, inc.  
 engineers & environmental

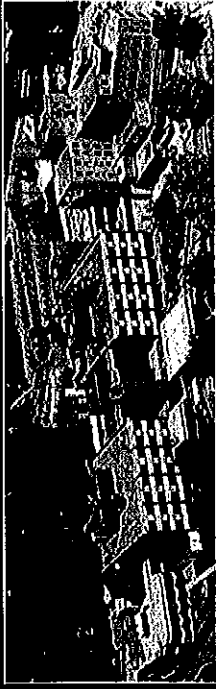
## Additional Experience

### Additional Medical Projects

BAI and MSES as separate firms have been involved on numerous health care and similar institutional projects. For BAI these services included planning, design and construction administration. MSES has provided Mechanical/Electrical/Plumbing, Civil, Survey and Environmental services.

Additional Health Care Facilities completed by BAI include:

- Braxton County Memorial Hospital
- Roane General Hospital
- Fairmont General Hospital
- Grafton City Hospital



### New Construction:

- WV Veterans Nursing Facility
- Western District Mental Health Center
- Regional VII Public Health Center
- Colin Anderson Center
- Regional IX Public Health Center
- Potomac Comprehensive Diagnostic & Guidance Center
- Hancock-Brooke Mental Health Services Facility
- Westchester Medical Complex
- National Institute of Occupational Safety and Health
- Hampshire County Health Department



### Renovations/Conversions:

- Barbourville Veterans Home
- Fairmont General Hospital
- Broadus Hospital
- Greenbrier Valley Hospital
- Fairmont Emergency Hospital
- Clarksburg V.A. Medical Center

### Furnishings/Equipment:

- Braxton County Hospital
- Stonewall Jackson Memorial Hospital
- Regional IX Public Health Center

MSES Consultants, Inc. (MSES) was originally founded in 1976 as an Environmental Consulting Company. Over the years, MSES expanded its Environmental Services, as well as adding Civil, Electrical, Mechanical and Safety Engineering Services with Drafting and Survey provided to supplement the various Engineering expertise.

MSES' environmental capabilities are listed below:

- Environmental Permitting (Air, Wastewater, and Stormwater Discharges); Environmental Plan Preparation Groundwater Protection, Stormwater Pollution Prevention, Facility Response Plans, Waste Management Plans, etc.)
- Environmental Inspections/Audits
- ISO 14001 Registration Assistance
- Environmental Regulation Compliance/Interpretation (Local, West Virginia and Federal)
- Indoor Air Quality Studies (Ventilation, Air Contaminants, Identification and Quantification, Microorganism Assessments)
- Asbestos (Inspections, Management Plans, Abatement Specifications, Abatement Monitoring, Clearance Air Monitoring)
- Lead Based Paint (Inspections, Abatement Specifications, Abatement Monitoring, Clearance Air Monitoring)
- Landfill (Design, Construction Specifications, Construction Monitoring)
- Contaminated Soil/Groundwater (Assessment, Clean-up Specifications, Clean-up Monitoring, Clearance Sampling, Voluntary Remediation Plan Preparation/Implementation)
- ASTM Phase I, II, and III (Environmental Site Assessments);
- Water System Design;
- Wastewater System Design

The MSES Staff includes the following environmental specialists:

- Civil Engineers;
- Environmental Chemists;
- Biologists;
- Meteorologist; and
- Industrial Hygienist.

MSES personnel maintain a wide variety of professional licenses/certifications. A list of licenses/certification maintained by one or more of the MSES staff is listed below:

- Registered Professional Engineer (PE);
- Certified Industrial Hygienist (CIH);
- Qualified Environmental Professional (QEP);
- Licensed Remediation Specialist (LRS);
- Licensed Asbestos Inspector;
- Licensed Asbestos Management Planner;
- Licensed Asbestos Clearance Air Monitor;
- Licensed Lead Inspector;
- Licensed Groundwater Monitoring Well Installer; and
- Licensed Underground Storage Tank Closure Specialist.

#### APPROACH TO ENVIRONMENTAL SURVEYS

MSES typically utilizes the following approach to environmental survey:

- Project Initiation in which Project Objectives are Defined;
- Field Work Performed;
- Analysis of Samples (if required);
- Review of Information (Data Obtained and Identification of Regulatory/Best Management Practices);
- Report Preparation; and
- Review of Findings with Client.



State of West Virginia  
 Department of Administration  
 Purchasing Division  
 2019 Washington Street East  
 Post Office Box 50130  
 Charleston, WV 25305-0130

# Request for Quotation

RFQ NUMBER  
 PSH11017

PAGE  
 1

ADDRESS CORRESPONDENCE TO ATTENTION OF  
 ROBERTA WAGNER  
 304-558-0067

RFQ COPY

TYPE NAME/ADDRESS HERE

**Blackwood Associates, Inc.**  
 611 East Park Avenue  
 Fairmont, WV 26554

HEALTH AND HUMAN RESOURCES  
 JACKIE WITHROW HOSPITAL  
 105 SOUTH EISENHOWER DRIVE

BECKLEY, WV  
 25801

304-256-6600

DATE PRINTED	TERMS OF SALE	SHIP VIA	FOB	FREIGHT TERMS
08/25/2010				

BID OPENING DATE: 09/08/2010 BID OPENING TIME 01:30PM

LINE	QUANTITY	UOF	QAT NO	ITEM NUMBER	UNIT PRICE	AMOUNT
ADDENDUM NO. 1						
1. QUESTIONS AND ANSWERS ARE ATTACHED. 2. TO MOVE THE BID OPENING DATE FROM 09/02/2010 TO 09/08/2010. 3. ADDENDUM ACKNOWLEDGEMENT IS ATTACHED. THIS DOCUMENT SHOULD BE SIGNED AND RETURNED WITH YOUR BID. FAILURE TO SIGN AND RETURN MAY RESULT IN DISQUALIFICATION OF YOUR BID.						
EXHIBIT 10						
REQUISITION NO.: PSH11017						
ADDENDUM ACKNOWLEDGEMENT						
I HEREBY ACKNOWLEDGE RECEIPT OF THE FOLLOWING CHECKED ADDENDUM(S) AND HAVE MADE THE NECESSARY REVISIONS TO MY PROPOSAL, PLANS AND/OR SPECIFICATION, ETC.						
ADDENDUM NO. S:						
NO. 1 <del>.....</del>						
NO. 2 .....						
NO. 3 .....						

SEE REVERSE SIDE FOR TERMS AND CONDITIONS

SIGNATURE	TELEPHONE	DATE
TITLE	FEIN	ADDRESS CHANGES TO BE NOTED ABOVE

WHEN RESPONDING TO RFQ, INSERT NAME AND ADDRESS IN SPACE ABOVE LABELED 'VENDOR'



State of West Virginia  
 Department of Administration  
 Purchasing Division  
 2019 Washington Street East  
 Post Office Box 50130  
 Charleston, WV 25305-0130

# Request for Quotation

RFQ NUMBER  
**PSH11017**

PAGE  
**2**

ADDRESS CORRESPONDENCE TO ATTENTION OF  
**ROBERTA WAGNER**  
**304-558-0067**

VENDOR


RFQ COPY  
 TYPE NAME/ADDRESS HERE

SHIP TO

**HEALTH AND HUMAN RESOURCES**  
**JACKIE WITHROW HOSPITAL**  
**105 SOUTH EISENHOWER DRIVE**  
**BECKLEY, WV**  
**25801**      **304-256-6600**

DATE PRINTED	TERMS OF SALE	SHIP VIA	FOB	FREIGHT TERMS
08/25/2010				

BID OPENING DATE: **09/08/2010**      BID OPENING TIME: **01:30PM**

LINE	QUANTITY	UOP	CAT NO	ITEM NUMBER	UNIT PRICE	AMOUNT
NO. 4	.....					
NO. 5	.....					
<p>I UNDERSTAND THAT FAILURE TO CONFIRM THE RECEIPT OF THE ADDENDUM(S) MAY BE CAUSE FOR REJECTION OF BIDS.</p> <p>VENDOR MUST CLEARLY UNDERSTAND THAT ANY VERBAL REPRESENTATION MADE OR ASSUMED TO BE MADE DURING ANY ORAL DISCUSSION HELD BETWEEN VENDOR'S REPRESENTATIVES AND ANY STATE PERSONNEL IS NOT BINDING. ONLY THE INFORMATION ISSUED IN WRITING AND ADDED TO THE SPECIFICATIONS BY AN OFFICIAL ADDENDUM IS BINDING.</p> <p style="text-align: center;">             SIGNATURE  <b>Robert Wagner Associates, Inc.</b>            COMPANY  <b>9/1/10</b>            DATE         </p> <p>NOTE: THIS ADDENDUM ACKNOWLEDGEMENT SHOULD BE SUBMITTED WITH THE BID.</p> <p>REV. 09/21/2009</p> <p style="text-align: center;">END OF ADDENDUM NO. 1</p>						

SEE REVERSE SIDE FOR TERMS AND CONDITIONS		
SIGNATURE	TELEPHONE	DATE
TITLE	FEIN	ADDRESS CHANGES TO BE NOTED ABOVE

WHEN RESPONDING TO RFQ, INSERT NAME AND ADDRESS IN SPACE ABOVE LABELED 'VENDOR'