

Proposal to the  
Division of Natural Resources  
Parks & Recreation Section  
for Architectural & Engineering Services

for the

Canaan Valley Resort  
State Park  
Renovation and Expansion



RFQ DNRB11006 August 27, 2010

GROVE & DALL'OLIO  
ARCHITECTS PLLC



RECEIVED

2010 AUG 31 A 10:46

PURCHASING DIVISION  
STATE OF WV



## TABLE OF CONTENTS

Canaan Valley Resort State Park

### Team Proposal

Expression of Interest/Project Team . . . . .	1
Project Approach . . . . .	2
Experience with Similar Projects	
Comfortable Design	
Ability to Complete Work in a Timely Manner. . . . .	3
Ability to Meet Project Budget Constraints	
Firm Profiles and Resumes . . . . .	4
References and Exhibits. . . . .	5





## EXPRESSION OF INTEREST

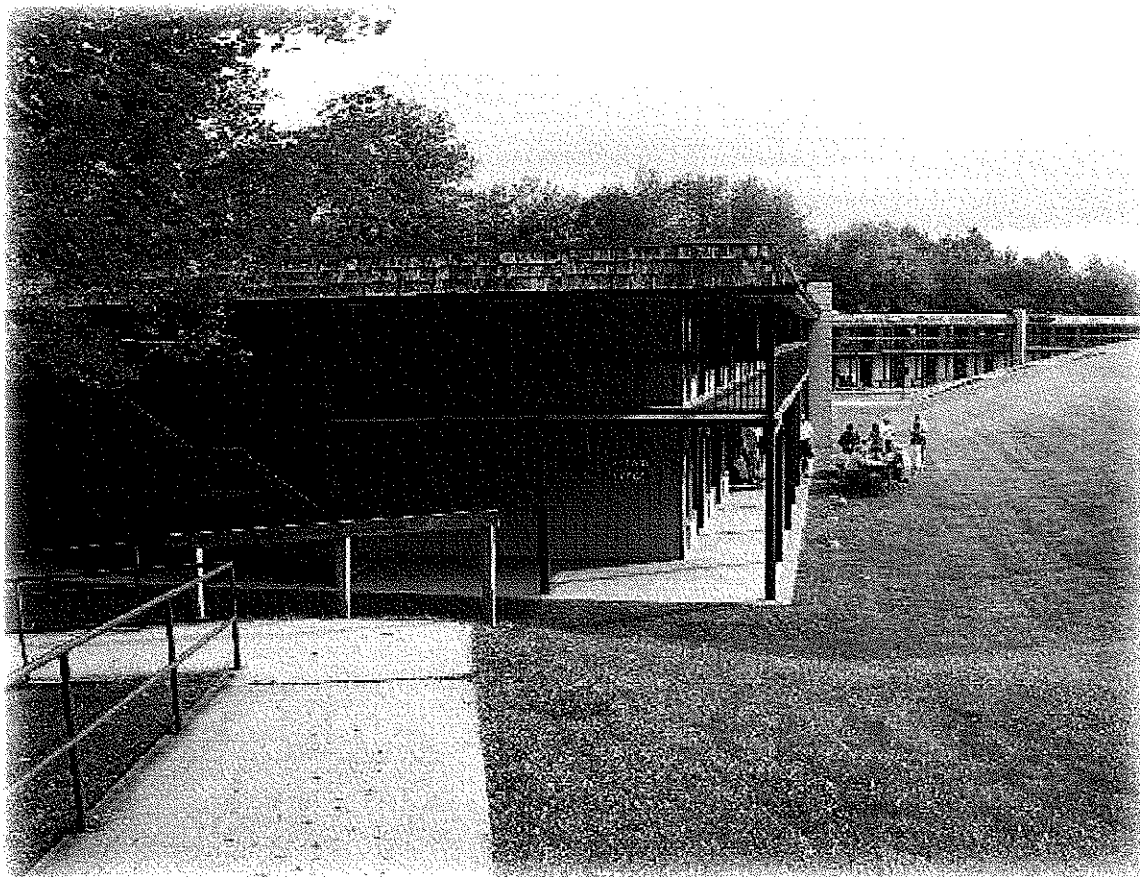
---

### Canaan Valley Resort State Park

We are pleased to herewith submit design team credentials for consideration for the expansion, renovation and site improvements to the Canaan Valley Resort State Park. The design team assembled includes: Grove and Dall'Olio Architects (GDA), a West Virginia design firm; Comfort Design for Mechanical, Electrical and Plumbing Engineering; Structural Concepts Inc. for Structural Engineering; Triad Engineering for Civil and Landscape Design; Stevens Engineering for the ski lift/conveyor design; and The Shooting Academy Inc. for the design of the shooting range.

GDA has worked with Triad, Comfort Design and Structural Concepts on a multitude of similar projects in the Mid-Atlantic Region. GDA is a woman owned Architecture firm that has received AIA design awards for successful contextual additions onto West Virginia properties. The project team is well versed at working within strict budgets and timelines and has the availability to begin work immediately.

Most of the team members have visited Canaan Valley Resort State Park with their families. The vistas, scenic beauty and tranquility in the area are awe inspiring. We feel strongly that the addition and renovation could greatly enhance these experiences by allowing a greater number of guests and by offering more well appointed rooms for savvy travelers.





## PROJECT TEAM

### Canaan Valley Resort State Park

Our team is made up of talented and experienced professionals:

#### Grove & Dall'Olio Architects PLLC Project Staffing:

Lisa Dall'Olio, AIA will serve as the Project Manager and the lead contact. Lisa has been working in the field for over 20 years serving both the public and private sector. Lisa's knowledge and experience leading Renovation Projects makes her the best qualified to serve in this capacity. Lisa will also lead the interior design portion of the project, as she has experience designing interiors for the hospitality industry.

Matthew Grove, AIA will be the Project Architect preparing drawings and architectural designs. Matthew has over 24 years of experience working on new and existing buildings. As Project Architect, Matthew will coordinate the engineering and architectural drawings.

Samantha Polinik will assist with data collection, product research, computer drafting, modeling and production. Her experience with large scale resort and community planning makes her ideally suited to help with this project.

#### Comfort Design Project Staffing:

Roger Catlett PE will be the Senior Mechanical Engineer on this project overseeing all work that his firm generates. Mr. Catlett will bring to this project over 30 years of experience. The scope of this project may call on Mr. Catlett's abilities to provide high efficiency HVAC equipment. He has successfully designed such systems for over 30 hotels in the Mid-Atlantic Region.

### State of West Virginia

#### Grove & Dall'Olio Architecture & Planning

Structural Concepts Inc.  
Structural Engineering

Comfort Designs Inc.  
Mechanical, Electrical  
& Plumbing Engr's

The Shooting  
Academy

View Engineering  
Civil Engineering

Stevens  
Engineering

Michael Howell PE will provide Electrical Engineering for this project. Mr. Howell has over 30 years of experience as Principal and Senior Electrical Engineer. He will calculate energy usage and develop power and lighting schedules necessary in determining overall power need. Mr. Howell will also coordinate with the local power company on service issues if necessary for this project.

Joshua Catlett PE will be the Project Mechanical Engineer on this project and will develop mechanical and plumbing drawings and specifications as well as cost estimates for those portions of the job. Josh will coordinate his work with that of his associate engineers prior to submitting documents to the architect's office.

Ken Thomas PE will be the Senior Sprinkler Engineer on this project. Mr. Thomas will develop fire suppression documents in drawing and specification format for the State Fire Marshall review if





## PROJECT TEAM (continued)

### Canaan Valley Resort State Park

#### Structural Concepts

##### Project Staffing:

As the Principal of Structural Concepts, Jody Fox PE will oversee all design work issued from their office. Mr. Fox worked with GDA on the Jefferson County Courthouse Annex project, providing key analysis of the existing floor structure for the newly proposed storage system. As Senior Engineer, Mr. Fox will also attend key meetings through the course of the project.

Jeff Layman, PE will serve as the Project Engineer throughout the length of the job, providing structural designs, details and specifications.

Hans Stamberg, PE will provide additional Structural Engineering expertise. He will coordinate with representatives from Chester Engineers and offer construction administration services.

#### CAS Structural Engineering Inc.

##### Project Staffing:

Carol Stevens will provide her expertise and experience from performing the structural analysis of the subject properties. She will help guide the initial schematic design towards a logical long term solu-

tion.

#### Triad Engineering

##### Project Staffing:

Lee McCoy would lead the Civil Engineering aspects of this project. He has a wealth of experience with complex site development and planning in and around West Virginia. His experience includes design of roads, parking facilities, site construction, water and sewer lines, storm drainage and storm water management facilities.

Steven Spradling would bring over 30 years of experience to the project. He will lead the Geotechnical analysis and design. He led the design of the new water dam at Snowshoe Resort.

Jack Ramsey will lead all aspects of the project related to water and wastewater supply. He will lead the design of the new increased potable water supply.

David Spriggs, LS, PS would bring over 30 years of land surveying experience to the project.

William Ernestes, LA would provide landscape design services for the project. in conjunction with GDA's in house landscape design.





## PROJECT TEAM (continued)

### Canaan Valley Resort State Park

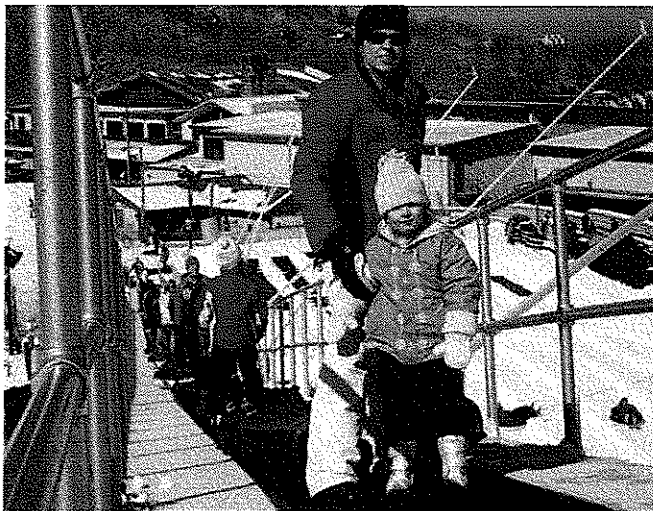
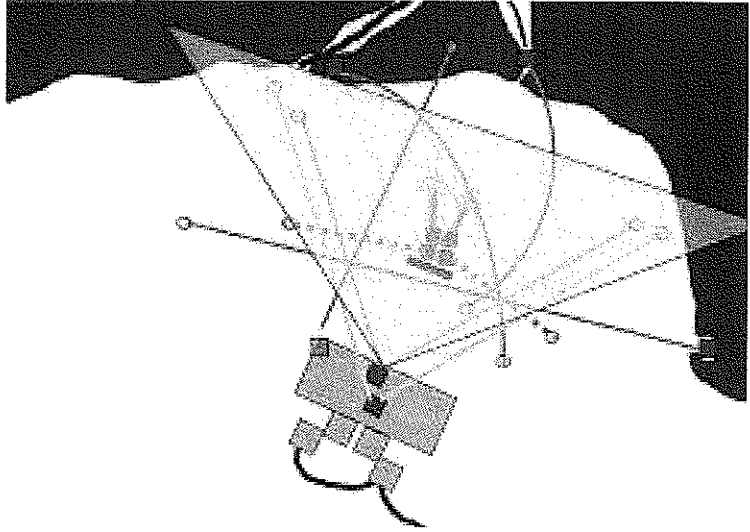
We have pulled together a team that can address each and every issue mentioned in the request for expressions of interest. Additional Team Members:

#### The Shooting Academy

##### Project Staffing:

Michael Davey of the Shooting Academy can easily provide the required design services for the proposed Wobble Clay shooting range. His specialty is the design and installation of sporting clay courses, but he also designs Indoor and Outdoor Rifle and Pistol Shooting Ranges. His design services often include recommendations for marketing, managing and the selection of managers and staff.

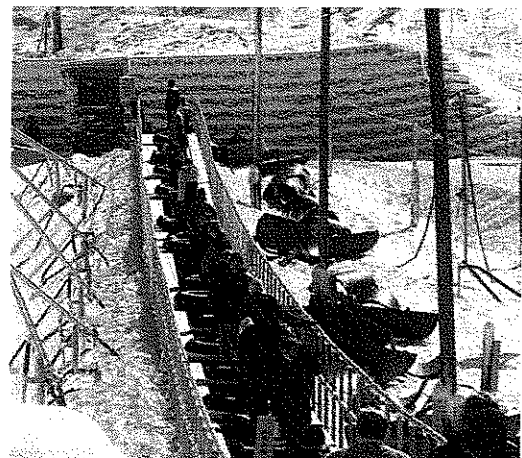
His design work at the Nemaquin Resort Shooting Range in Pennsylvania has increased revenue at the resort and generated additional room occupancy with many return bookings.



#### Steven's Engineering

##### Project Staffing:

For the design of the "magic carpet" conveyor lift from the base facility to the lower ski lift area we have selected Stevens Engineering. They have designed many of these lifts throughout the US. They also have experience with the design of lifts that can be converted to slides in the summer.



GROVE & DALL'OLIO  
ARCHITECTS PLLC

August 30, 2010

Mr. Frank Whittaker  
Purchasing Division  
PO Box 50130  
Charleston, WV 25305-0130

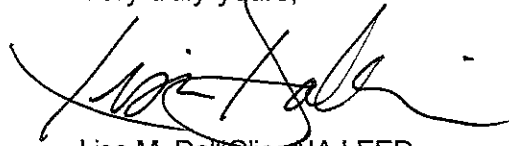
Re: Canaan Valley Resort State Park  
**Proposal for Architectural Services**

Dear Mr. Whittaker:

Grove and Dall'Olio Architects is pleased to submit this expression of interest for architectural and engineering services to design new guest rooms, rehabilitate existing rooms and demolish other rooms at Canaan Valley Resort State Park.

As requested, we have included one original and three convenience copies for your department's use. Please feel free to contact me directly for any further correspondence regarding this very exciting project.

Very truly yours,



Lisa M. Dall'Olio, AIA LEED  
Grove & Dall'Olio Architects PLLC

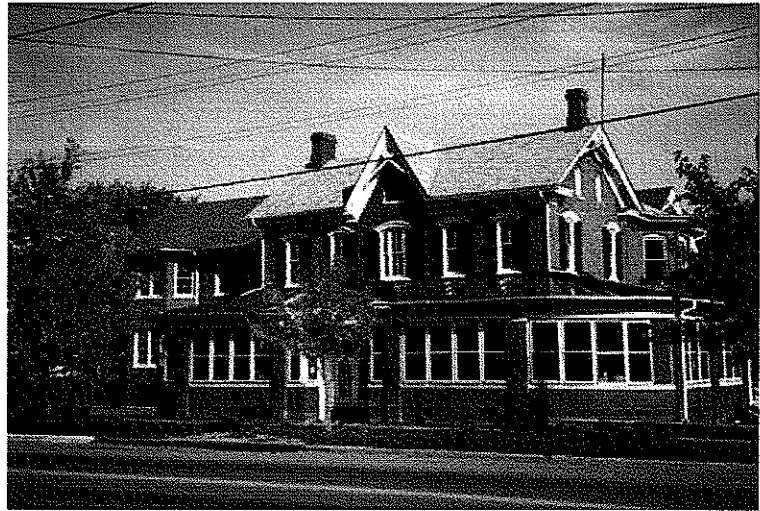




## PROJECT APPROACH

### Canaan Valley Resort State Park

The design team has read the Structural Report for the existing lodges and understands the complexity of the project. These same structural, drainage and mold issues have been encountered on many of our other renovation projects. We understand that we will have to work within a specified budget to provide the State with the best long term design solution. We are adept at renovations, additions and new construction. We have worked with facilities with "in-seasons" and understand that documents must sometimes be broken down into phases to minimize disruption of income generation.



The addition and renovation will need to be sympathetic to the original design and feel of Canaan Valley State Park. Any additions or renovations should augment rather than detract from the remaining structures. The design can be carefully crafted to enhance the rustic feel of the Canaan Valley Resort. GDA has worked on many properties where it is more important to create contextual space than leave a design signature on the project. GDA received an AIA design award for the addition and renovation to the Morgan County Library in downtown Berkeley Springs. The design allowed the original historic house, which had been donated to the Library, to remain the prominent feature while adding nearly 10,000 square feet of usable space.

GDA also created an AIA award-winning design for the new Caperton Train Station addition to



the B&O Hotel in downtown Martinsburg, West Virginia. This project was designed to be sympathetic to the Hotel and 19th century Roundhouse Center Shop Complex across the tracks. The once condemned early 19th century Hotel was renovated into office and retail suites.

GDA recently completed schematic designs for the creation of a 5 star Inn and Restaurant in Jefferson County, West Virginia.



## PROJECT APPROACH

---

### PROJECT APPROACH

The success of this project depends upon the Design Team's ability to maintain an open and accessible process which encourages participation by key project representatives from the State of West Virginia and the Canaan Valley Resort. Grove & Dall'Olio Architects (GDA) along with their engineering consultants are ready to take on this responsibility.

The Design Team, consisting of architects and engineers, will meet with each of the State Representatives to develop programs for the new facilities. The job will require a thorough interview process encompassing the following basic steps:

#### A Client - Design Team Orientation

The first step would be a project orientation meeting between the key representatives of the institution and the principal members of the design team. The goals of this initial meeting would include the following:

- a) introductions
- b) determine project schedule
- d) review sources of known project data
- e) determine chain of contact
- f) discuss access to site procedures
- g) identify other project partners





## PROJECT APPROACH

---

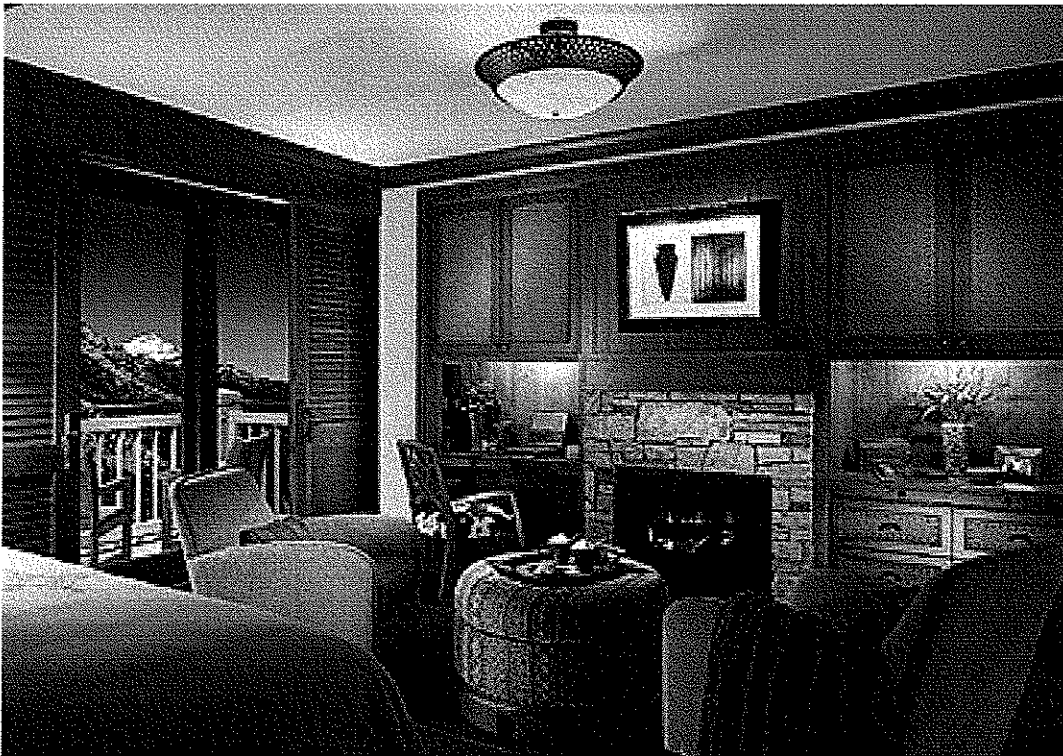
### B Collection of Existing Data

All design team members will read any current reports prepared for or by the State as it pertains to the Resort's growth and recently defined benchmarks for quality.

The design team will compile existing conditions information collecting available drawings, surveying the site and reviewing the recently completed Structural Report.

Members of the design team will meet with key staff and administrators which will be critical in establishing the agreed upon program.

Members of the design team will meet with key client representatives to establish and determine what, if any, the Leadership in Energy and Environmental Design (LEED) equivalent goals are for this project.







### C Develop Spatial Planning Program

After reviewing the existing data now being collected and identifying the relationships between the various components of the resort facility, the design consultants will present a summary of understanding of the planning program to the client team for review and comment.



GDA has led many design charrettes and work meetings, building consensus along the path to successful design solutions.

### D Schematic Design

With the written program completed and agreed upon, the design team will develop a concept that reflects the project goals and compliments the site's features. Leading design principals from Grove & Dall'Olio and their consultants will present potential solutions.

All of the experience our firms have in working on government and multi-building complexes will be applied to develop a concept that will achieve all of the goals defined in the program.

As with any building design process GDA is engaged in, feed back and exchange with the client team is essential. The schematic design will undergo a series of presentations and working meetings with all of the project team (client and consultants) to reach the end goal of an agreed upon schematic design.

Written records of these meetings will be kept by GDA and submitted to all attendees. Review of any LEED goals will be assessed as the schematic design evolves if they are to be a part of this process.

The final Schematic Design, preliminary cost estimate and phasing plan will be presented in a Final Report. The format will be clear, concise, and attractive, rendering it useful as a planning tool, but also a functional fund raising and public relations tool.



#### E Design Development Phase

With the schematic design finalized and the overall drawing phase at about 25% complete, it will be time to review the construction costs. Our cost estimators will take the bones of the design and extrapolate projected labor and material figures to affirm the design is within budget.

During this phase of design, more specific decisions are made about material selections. In keeping with LEED sustainable building standards, the design team will be looking at building materials that may be locally produced or materials that are more easily recycled.

Cost/benefit analysis of various building materials and systems will be conducted to determine the best solutions for this project.

At the end of Design Development, the working drawings should be about 50% complete and all specifications in an outline format.

Adjustments will be made to the design as directed by the project team in order to stay on track with established project goals.

#### G Bidding and Construction Phases

GDA is well versed in assisting institutional clients with the Bidding and Negotiation Phases as well as maintaining an active roll in oversight of the contractors interpretation of the construction documents during the Construction Phase.



Working with contractors and their subs is just as critical as the drawing and design aspects of a project for GDA.

#### F Construction Documents Phase

Consistent with industry standards, GDA and their consultants now will work to complete the drawings and specifications. Interim meetings and review of design and cost estimates in progress will be conducted to confirm the schedule is being met and the design is on track with the previously agreed upon written program.



## PROJECT APPROACH

Canaan Valley Resort State Park

### PROJECT SCHEDULE

The following schedule anticipates the State giving direction to proceed in early October. As with all schedules related to this type of work, there will be review periods by the Owner and the length of this review and comment period may be longer or shorter than expected.

The Project Team is ready to begin this exciting project immediately and looks forward to having the opportunity to sit down with representatives from the County to discuss this project in greater detail.

Oct    Nov    Dec    Jan    Feb    Mar    Apr    May    Jun    -    Dec

A/E Procurement



Schematic Design



Design Development



Construction Documents



Bidding/Negotiation

Construction Phase





## EXPERIENCE WITH SIMILAR PROJECTS

---

### Canaan Valley Resort State Park

The design team is excited about the proposed project and would be proud to work on something that is such a big part of our State's Tourism Industry. We have collectively worked on dozens of hotel projects in the Mid-Atlantic Region.

Comfort Design has completed Mechanical and Electrical Designs for over 30 Hotel Projects. They recently completed work on the Washingtoni

Anticipated concepts and approach to the project:

Our firm does not solely design hotels or resorts. We are a firm that prides itself in designs which are appropriate in terms of scale, materials and form to the original architecture. The program for the client is strictly followed to provide fully functional space which is ideally suited to the individual client and not pulled from previous similar projects. The materials should blend well with nature and allow the phenomenal views to be captured and framed. The HVAC system should be efficient, invisible to the public and comfortable.

GDA meets the insurance requirements of the State of West Virginia and has successfully worked with the Division of Culture and History.

Although we have completed many renovation and addition projects, the following projects highlight work specifically tied to hotel structures and multi-unit residential projects.



## EXPERIENCE WITH SIMILAR PROJECTS

### Canaan Valley Resort State Park

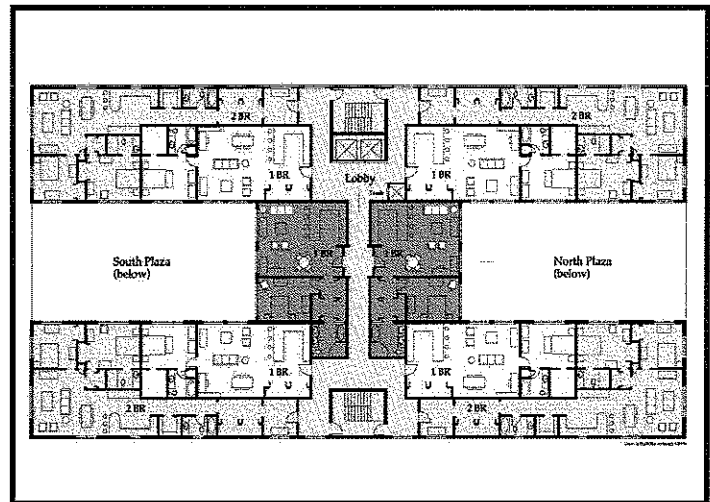
#### GATEWAY HOTEL, Martinsburg, WV

GDA completed schematic design documents for the renovation and updating of this circa 1920 hotel in downtown Martinsburg. The rooms which are too small by today's standards were redesigned to become suites. The plumbing and mechanical chase spaces were maintained for efficiency. This project was put on hold due to the struggling economy.



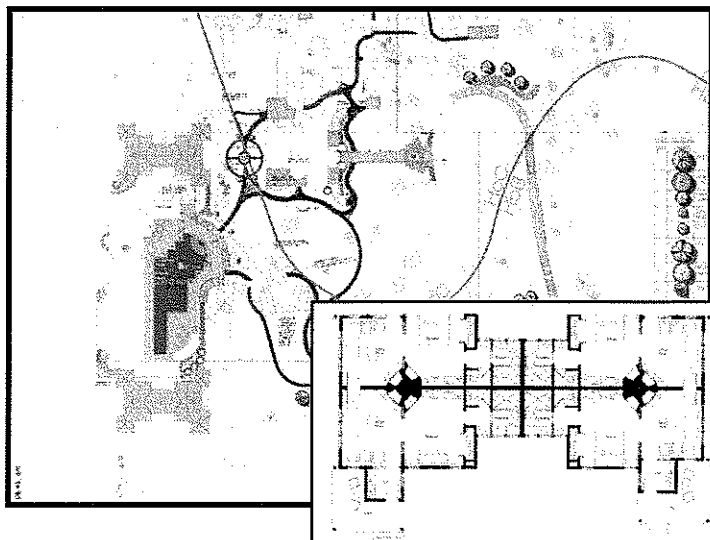
#### ANTIETAM CONDOMINIUMS, Hagerstown, MD

GDA was hired by Demcore Development to design a new high-rise condominium building in the heart of the new arts and entertainment district in downtown. The design features over 90 one and two-bedroom residential condominiums. The goal was to maximize natural light exposure and minimize circulation space.



#### HAWTHORN, Jefferson County, WV

GDA was hired to convert a 19th century grand home into a 5 star Inn and Restaurant. The schematic phase was recently completed. The project has been put on hold until the economy rebounds. The guest cottages and site design were completed to create a pedestrian/golf cart resort with four units to a cluster. The main house was redesigned to accommodate 3 guest suites as well.



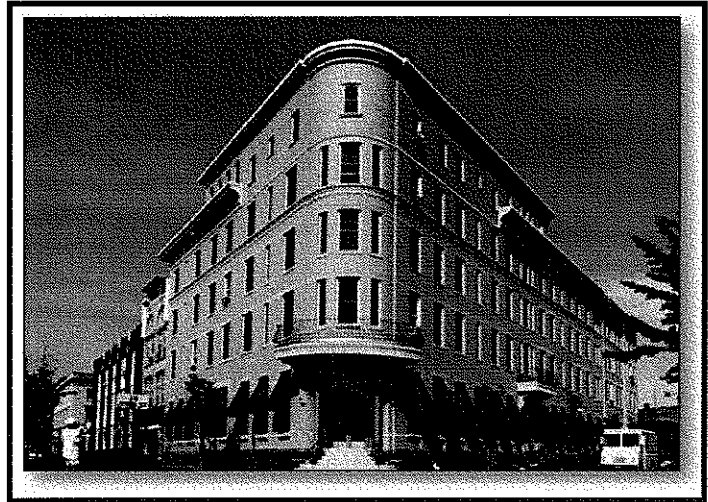


## EXPERIENCE WITH SIMILAR PROJECTS

### Canaan Valley Resort State Park

#### KINGSTON HOTEL, Kingston, NY

Matthew Grove was the project architect for the renovation of this early 20th century hotel into a senior living facility.



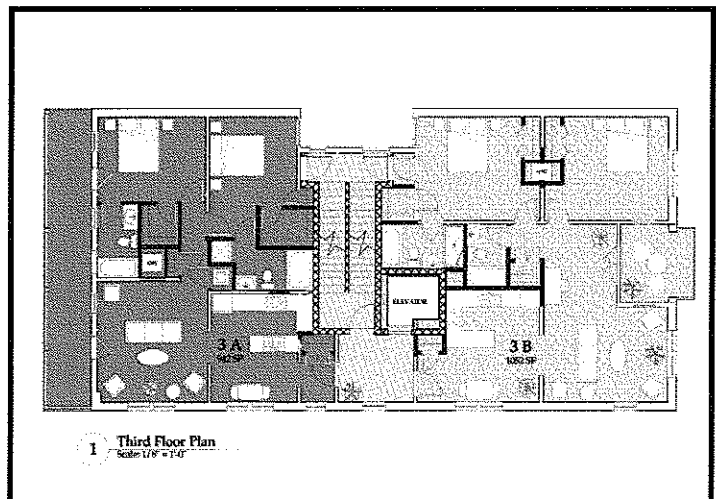
#### NEMACOLIN RESORT, Pennsylvania

GDA was hired by Nemaocolin Resort to thoroughly document all of the existing conditions and provide them with up to date drawings of the facility. Many phases of construction had been completed and the facilities management needed a thorough set of existing conditions drawings. This documentation process lended us a better understanding of the options for guest rooms at one of Pennsylvania's premier resorts.



#### HAGER'S ROW CONDOMINIUMS, Hagerstown, MD

GDA was hired to convert a dilapidated 20th century apartment building into a modern code compliant condominium building. Egress stairs had to be added as well as elevators. The design incorporates one and two bedroom condominiums next door to the Maryland Symphony Theatre in downtown.







## EXPERIENCE WITH RENOVATIONS & ADDITIONS

### Canaan Valley Resort State Park

The owner of the Peking Restaurant wanted the restaurant space to be appropriate for a Chinese Restaurant but flexible enough to serve a different restaurant tenant. The design featured bold booth fabrics, concrete counters, halogen lighting table spots and a rich color scheme. The art deco lighting and traditional furnishings helped the new use blend with the period interior.



Before and after images of Ground Floor of Hardware store which has now become Duffy's on Potomac in downtown Hagerstown, Maryland





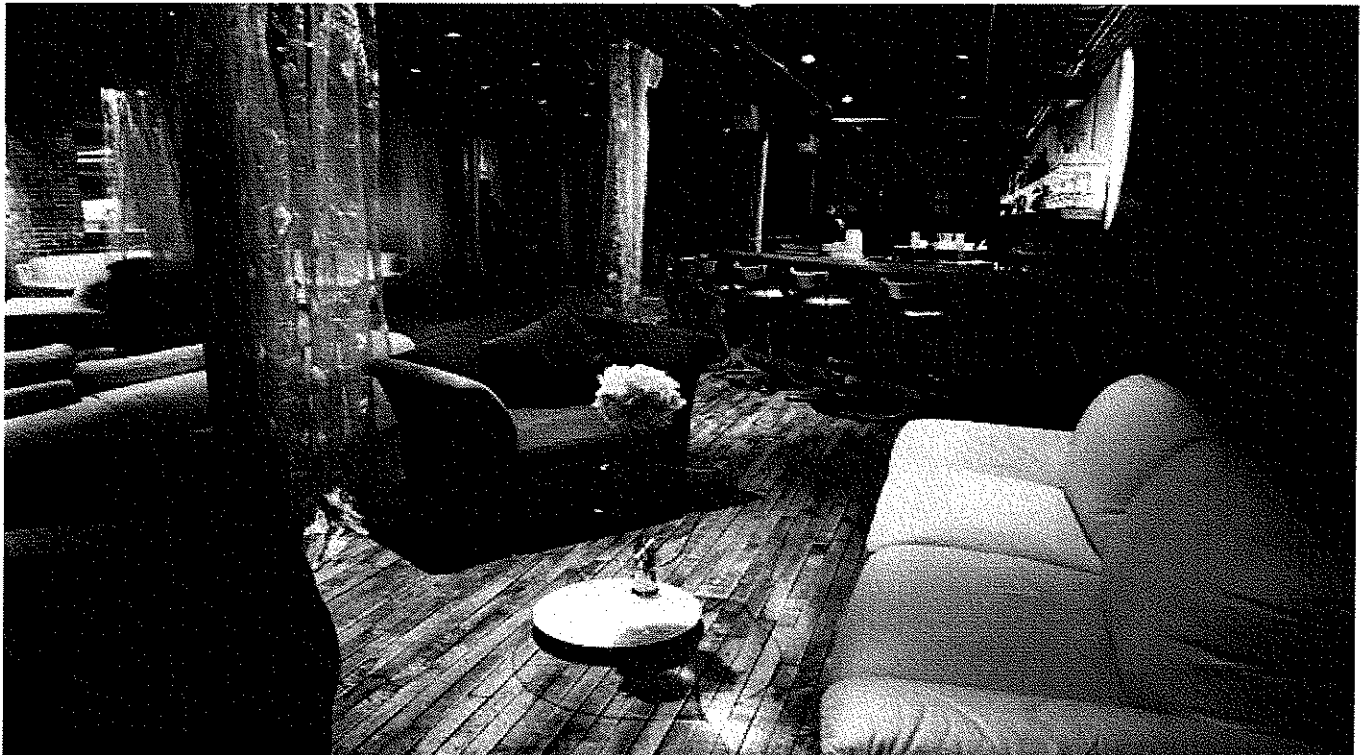
## EXPERIENCE WITH RENOVATIONS & ADDITIONS

### Canaan Valley Resort State Park

The proposed project team has completed several projects for the hospitality industry. We have renovated hotels and designed commercial kitchens, restaurants and a nightclub.

Duffy's on Potomac is a new restaurant which was created in an old hardware store in downtown Hagerstown, Maryland. Ava's is a new martini bar which once was a storage warehouse behind the same hardware store. The Peking Restaurant in Martinsburg, West Virginia was once two store-fronts that were combined into one and revitalized for use as a thriving Chinese Restaurant. Each of the restaurant designs has an individual personality suited for that particular type of dining experience. Should the restaurant at the Canaan Valley State Park become part of the renovations, the design team could help to transform it into a dining landmark.

Before and after images of AVA's nightclub in the lower level of the Schindel-Rohrer Building in downtown Hagerstown, Maryland.





## CAPACITY/CURRENT WORKLOAD

---

Like most businesses in the construction field, GDA has experienced a slow down in workload. In recent years, GDA has managed between 6 to 12 projects at a time with construction each with costs ranging from \$1 million to \$6 million. GDA has recently received a few commissions for projects in the area. We are currently working at only 30% capacity and would be able to devote the time necessary to meet the State's time frame.

GDA has been retained with Chester Engineers by the City of Martinsburg for the redesign of the Town Square. The bid documents are completed and the project should be under construction this Fall.

GDA is currently working on a children's history museum exhibit for the George Washington Heritage Trail using grant monies administered by the City of Martinsburg. The project is an interiors installation in the Martinsburg Train Station.

The Veteran's Affairs Medical Center in Martinsburg awarded a commission to GDA this Spring to renovate the sixth floor of their mid-rise hospital building for the executive offices. The schematic documents have now been completed.

Structural Concepts, Inc. current capacity for additional work is also very good. Much of their current work load is smaller projects less than \$10,000.00 in engineering fees. Their larger projects with fees greater than \$20,000.00 are near completion.

Comfort Design currently are operating at about 50% of their capacity and are actively seeking commissions. They are able to start this project immediately.

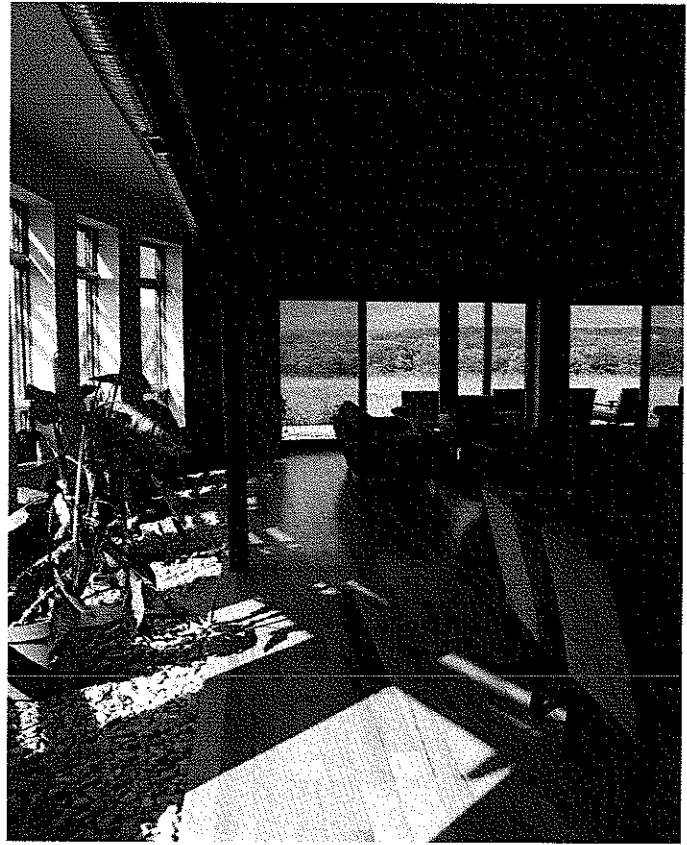
Chester Engineers currently are operating at about 25% of their capacity and are actively seeking commissions.



#### Energy Efficiency and Green Design Experience:

Many of the visitors to the State's Park System are already very environmentally conscious. These guests will undoubtedly be expecting sustainable features that help protect this pristine Canaan Valley environment. The design team has experience with incorporating new sustainable technologies into existing architecture. We are LEED accredited design professionals and have completed several projects utilizing passive solar, geo-thermal systems for heating and cooling, solar hot water systems, and rain water collection and distribution. Our firm also ushered the State's first Bio-kinetic septic filtrations system through the approval process.

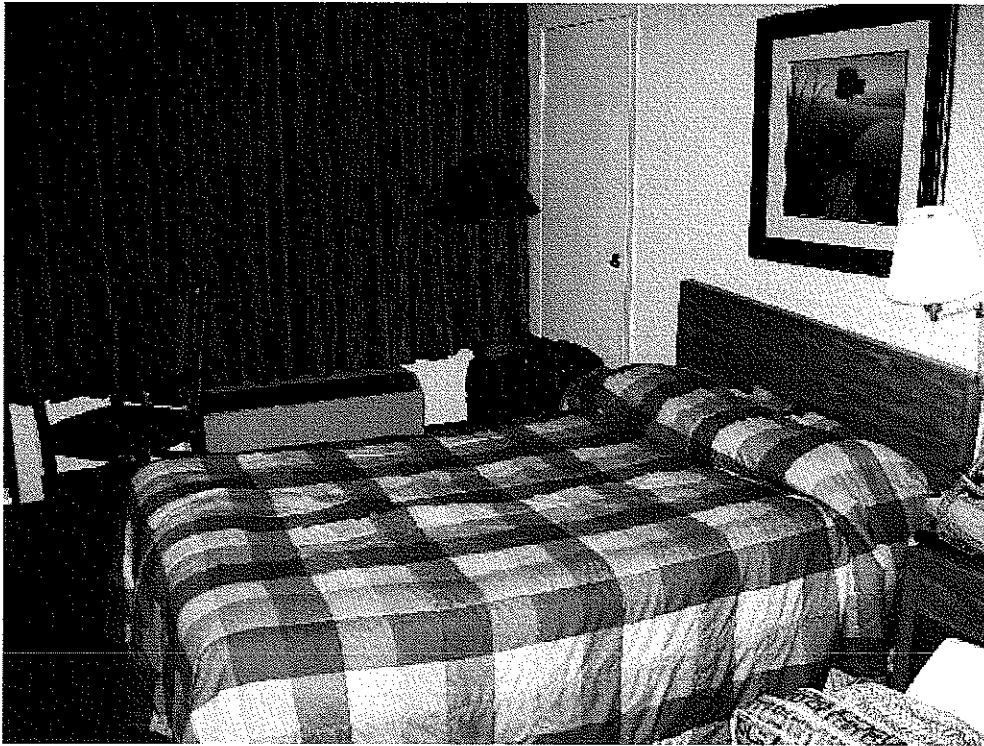
GDA recently designed a state-of-the-art swimming pool for a new community called Broomgrass. The pool has automatic salt water chlorine generation, a pebble tec interior, Titanium glazed self-cleaning ceramic splash tiles and a solar hot water heater which should offer several decades of near maintenance free enjoyment. The landscape design for the pool incorporates native plantings which will require little maintenance and water.



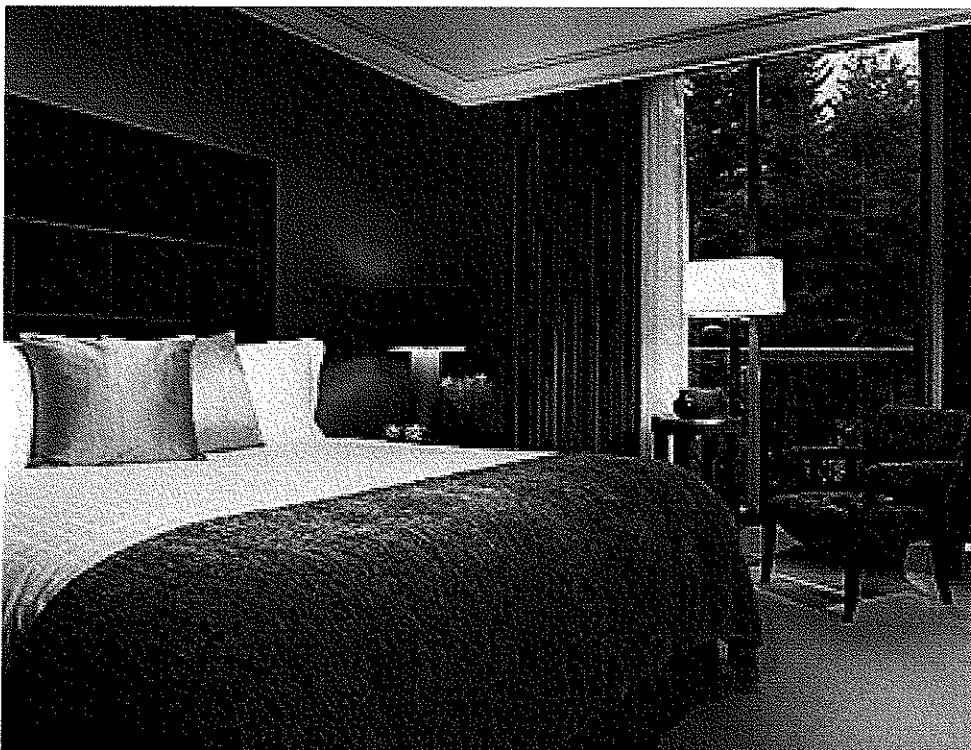


## COMFORTABLE DESIGN

### Canaan Valley Resort State Park



During the design of the new or renovated lodge rooms, special attention will be paid to *colors, materials, textures and design simplicity.*

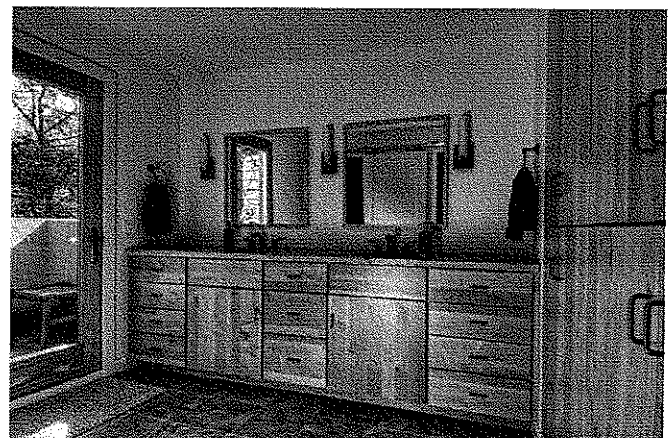


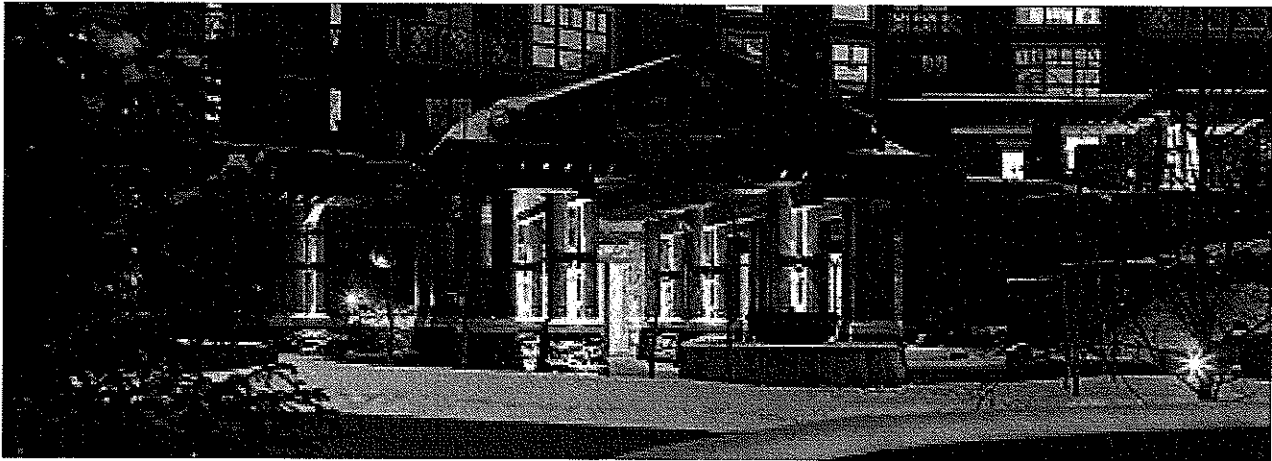
The focus at the Canaan Resort can and should be the views of nature.





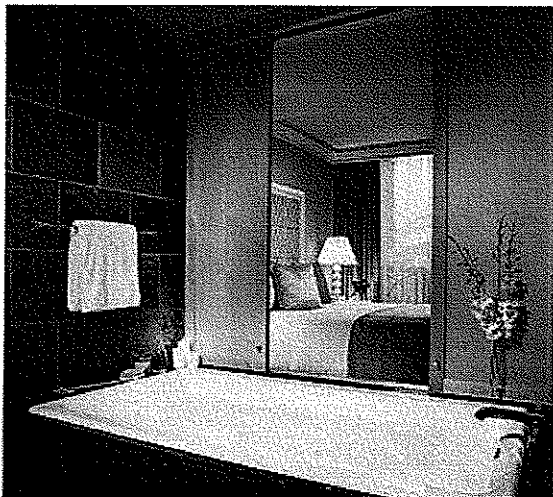
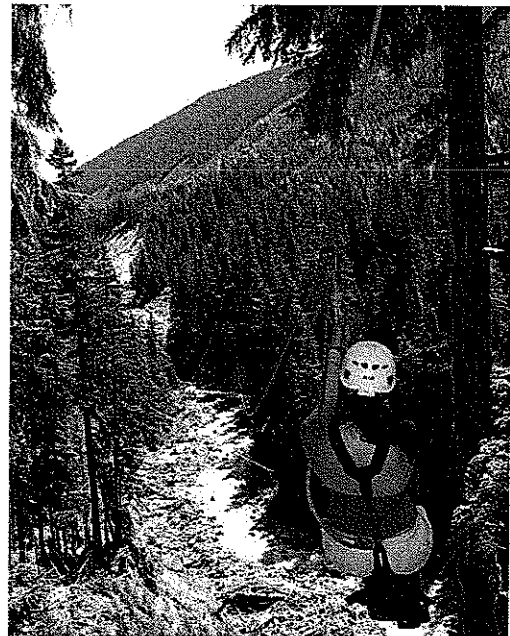




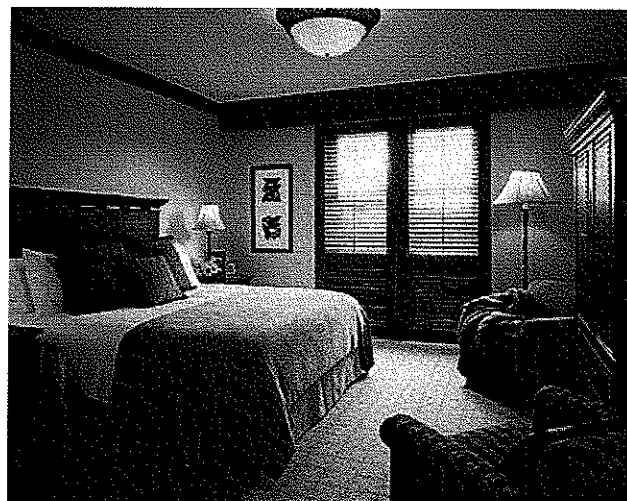


4 Seasons Resort

The designs will be timeless and sophisticated while also being casual and fun. By incorporating natural materials and pulling from nature's palette of colors, the visitors' vacations to the great outdoors will be enhanced.



4 Seasons Resort



4 Seasons Resort



## ABILITY TO WORK WITHIN A BUDGET

Canaan Valley Resort State Park

### COST ESTIMATING:

- GDA offers MEANS<sup>®</sup> Construction Cost Data Estimates periodically throughout a project
- The scope of work and design development are modified as deemed necessary by the periodic cost estimates.

EXAMPLE: Shepherd CTC scope was decreased based upon cost estimate prepared at 60% completion. The documents were then finalized and the project completed within budget and on time.

- GDA averages less than 5% change orders on projects (excluding add alternates)

### OFFERING PHASING OPTIONS WITHOUT RE-BIDDING:

- Where project funding may be insufficient at the time of bidding, certain elements are included in the construction bid package as separate add alternates
- Should funding be added later these elements can be incorporated without added expense of creating new docs or re-bidding

The following list represents local projects of a similar nature and scope that were completed within budget:

PROJECT	LOCATION	CONTRACT AMOUNT	WITHIN BUDGET
US District Courtroom Renovation	Martinsburg, WV	750,000	√
Essroc Italcementi Corp	Martinsburg, WV		
• Control Room Building		2,000,000	√
• Warehouse		800,000	√
• Administration Building		6,000,000	√
Old B&O Station Hotel Office Suite Conversion	Martinsburg, WV		
• Interior Renovation		1,100,000	√
US Multi-purpose Courtroom & US Clerks Offices	Martinsburg, WV	1,200,000	√
US Probations Offices	Martinsburg, WV	300,000	√
Shepherd College Community Technical College	Martinsburg, WV	440,000	√
Morgan County Library	Berkeley Springs, WV	740,000	√





## ABILITY TO WORK WITHIN TIME CONSTRAINTS

Canaan Valley Resort State Park

- Many of GDA's projects involve historic properties with funding from State and Federal Grant Sources
- These Grant sources often require strict timetables which must be adhered to in order to not lose funding.

EXAMPLE: ITC documents and approval process were completed within 120 days of contract signing in order to meet grant demands

- GDA can easily commit to meeting or exceeding the targeted dates for completion outlined in the schedule presented
- GDA has NEVER caused a project delay by an inability to meet projected deadlines for design or construction documents

The following List represents projects with time constraints for the preparation of the drawings and specification that were completed on time:

PROJECT	LOCATION	DRAWING PHASE	ON TIME
US District Courtroom Renovation	Martinsburg, WV	8 months	√
Essroc Italcementi	Martinsburg, WV	3 months	√
• Control Room Building		1 month	√
• Warehouse		6 months	√
• Administration Building			
Old B&O Station Hotel Office Suite Conversion	Martinsburg, WV	6 months	√
• Interior Renovation			
US Multi-purpose Courtroom & US Clerks Offices	Martinsburg, WV	10 months	√
US Probations Offices	Martinsburg, WV	4 months	√
Shepherd College Community Technical College	Martinsburg, WV	4 months	√
Morgan County Library	Berkeley Springs, WV	6 months	√
Intermodal Transportation Center (ITC) Train Station	Martinsburg, WV	4 months	√



Grove & Dall'Olio Architects PLLC is a full-service, woman owned architectural firm which guides new construction, renovation, restoration, and adaptive reuse projects from inception to completion. The firm began in 1993 and is dedicated to serving the needs of its clients through the development of designs which are appropriate in size, scale and style. The services of the firm include all phases of program analysis, budget preparation, architectural design and drafting, specification writing, contractor bidding negotiation, construction supervision, and public relations.

Matthew Grove and Lisa Dall'Olio, partners of Grove & Dall'Olio Architects PLLC, collectively offer more than 36 years of professional architecture experience and are actively involved in the field at the local, state and national levels. Mr. Grove and Ms. Dall'Olio are members of the American Institute of Architects and are licensed to practice in West Virginia, Maryland, New York, Pennsylvania and Virginia. Both Mr. Grove and Ms. Dall'Olio are LEED Accredited Professionals as well as members for Historic Preservation.

The firm's experience includes the successful completion of a wide range of new construction, preservation and adaptive reuse projects throughout the eastern United States. Since relocating the practice from New York City to Martinsburg, West Virginia in 1994, Mr. Grove and Ms. Dall'Olio have focused their efforts toward a variety of municipal, commercial and residential projects in West Virginia. Grove & Dall'Olio Architects PLLC is experienced in working with government entities and operates in compliance with all applicable state and local contracting requirements.

#### **PARTIAL CLIENT LISTING:**

Jefferson County Commission  
National Museum of the US Army  
US General Services Administration  
WV Division of Culture & History  
Berkeley County Roundhouse Authority  
The City of Martinsburg  
The City of Winchester  
Morgan County Public Library  
Martinsburg-B.C. Public Library

Essroc - Italcementi  
Governor Gaston Caperton  
Tom Seely Furniture  
Flatwoods Factory Stores  
Blue Ridge Outlet Center  
Chatfield-Taylor Corporation  
Nemacolin-Woodlands Resort

Shepherd College  
Community & Technical College at Shepherd

Huntington Bank  
Jefferson Security Bank  
Senior Life Services of Morgan County

#### **AWARDS:**

1997 AIA WV Honor Award for Caperton Station  
1997 AIA WV Craftsmanship Award for  
exterior of Caperton Station  
1999 AIA WV Merit Award for new Morgan  
County Public Library  
2009 AIA WV Honor Award for Grove & Dall'Olio  
Residence



## MATTHEW W. GROVE, AIA, LEED

Partner, Grove & Dall'Olio Architects PLLC

Canaan Valley Resort State Park

A native of Martinsburg, West Virginia, Mr. Grove studied architecture at Carnegie Mellon University, an institution which is nationally renowned for its academic emphasis in engineering. Upon graduation, he relocated to New York City where he was engaged by such prominent firms as Cabrera-Barricklo, Architects, and later, David Smotrich & Associates. During his employment, he served as Project Architect for the AIA award-winning Woodstock Meadows Residential Community in Woodstock, New York, as well as the restoration of the historic Jewish Community Center in Brooklyn, New York.

While in New York, Grove had the opportunity to serve in leadership roles for a variety of prestigious architectural projects which included the restoration and renovation of Sailor's Snug Harbor Cultural Center on Staten Island, New York; the conversion of the Stuyvesant Hotel in Kingston, New York; the renovation of the Residence Halls at State University of New York in Stony Brook; as well as a number of custom residential and commercial interior projects in Manhattan.

In 1993, Mr. Grove established his own practice in New York City. Realizing the potential for both new construction projects and preservation efforts in West Virginia, Mr. Grove returned to Martinsburg in 1994 where he was joined by his wife and partner, Lisa Dall'Olio. Since that time, the firm of Grove & Dall'Olio Architects has been involved with project work commissioned by United States District Courts, General Services Administration, Shepherd College, Berkeley County Roundhouse Authority, Blue Ridge Outlet Center, The City of Martinsburg, as well as numerous private sector residential and commercial clients.

### EDUCATION

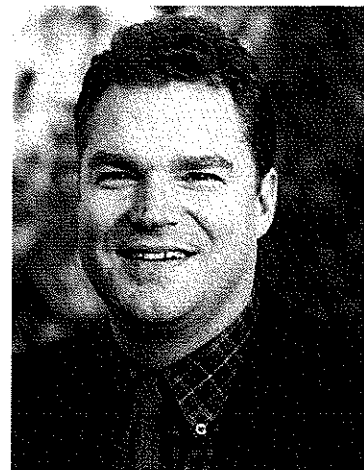
Bachelor of Architecture, 1986  
Carnegie Mellon University, Pittsburgh, Pennsylvania  
LEED Accredited Professional, 2009  
US Green Building Council

### PROFESSIONAL REGISTRATIONS

Registered Architect in the State of West Virginia, 1993  
Registered Architect in the State of New York, 1990  
Registered Architect in the State of Maryland, 1994  
Registered Architect in the State of Pennsylvania, 2003

### PROFESSIONAL AFFILIATIONS

American Institute of Architects, Member  
West Virginia Chapter of the American Institute of Architects, Member  
Preservation Alliance of West Virginia, Member  
Society of Industrial Archaeologist, Member  
International Code Council, Member  
Preservation Maryland, Member







## LISA M. DALL'OLIO, AIA, LEED

Managing Partner, Grove & Dall'Olio Architects <sup>PLLC</sup>

Canaan Valley Resort State Park

Lisa M. Dall'Olio's expertise as a preservationist and architectural historian have resulted in her participation in a variety of exciting assignments. In 1993, she served as an architectural consultant to the World Monument Fund to participate in an adaptive reuse study of the Esterháza Palace in Fertöd, Hungary. One year later, she supervised a preservation study of the cast-iron Chelsea Pier 54 in New York City, constructed in 1912 to serve the Cunard luxury liners. She was appointed by Governor Cecil Underwood in 1998 to the State Commission on Archives and History.

A native of the greater New York City metropolitan area, Ms. Dall'Olio studied at the top-rated, University of Texas, School of Architecture, where she obtained her Bachelor's degree and pursued graduate work in the field of preservation. Returning to New York City in 1990, she was employed as a preservationist by the New York City Landmarks Preservation Commission. There, her responsibilities included the review and evaluation of hundreds of proposed historic renovation projects. Using United States Department of Interior Preservation Standards, she consulted NYC Landmarks Preservation Commissioners on projects which ranged from facade and interior improvements made to small, historic private residences – to the extensive restoration of many city landmarks.

Ms. Dall'Olio obtained practical, commercial design experience while employed by Joseph Pell Lombardi, an internationally-renowned architect/preservationist, who is credited with the Soho cast-iron loft residence conversion movement in the 1970s, as well as Cabrera-Barricklo, Architects, where, in other roles, she served as Job Captain for the multi-million dollar restoration and adaptive reuse of Sailor's Snug Harbor Cultural Center on Staten Island, New York. Ms. Dall'Olio relocated to Martinsburg, West Virginia, with her husband and partner, Matthew W. Grove, in 1994, to establish Grove & Dall'Olio Architects. Her expertise in the field of preservation and historic architecture ensures authentication of the firm's restoration assignments and brings timeless, classical architectural qualities to those projects which involve new construction. Recently, Ms. Dall'Olio has led several historic restorations and adaptive reuse projects including the new Community & Technical College of Shepherd and a mixed use master plan study of the old Interwoven property in downtown Martinsburg.

### EDUCATION

Bachelor of Architecture, University of Texas, 1990  
LEED Accredited Professional, 2009, US Green Building Council

### PROFESSIONAL REGISTRATIONS

Registered Architect in the State of West Virginia, 1995  
Registered Architect in the State of New York, 1994  
Registered Architectural Historian in the State of West Virginia, 1994  
Registered Architect in the State of Virginia, 2009

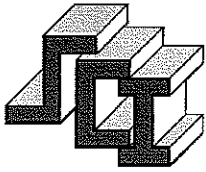
### PROFESSIONAL AFFILIATIONS

American Institute of Architects, Member  
National Trust for Historic Preservation, Member

### CIVIC APPOINTMENTS

Commissioner, West Virginia Archives and History Commission





## STRUCTURAL CONCEPTS, INC.

## Introduction



### *Giving Dreams a Strong Foundation*

**Structural Concepts, Inc.** was formed in 1988 to service the needs of Architects, Developers, and Builders of the Northern Virginia, Washington, DC, Maryland, and Northern Shenandoah Valley areas. Our goal is to provide efficient and high quality structural engineering, contract documents, and contract administration services to meet the needs of a rapidly expanding community.

SCI is headquartered in Winchester, Virginia. The president of SCI is a graduate of Virginia Polytechnic Institute and State University in Blacksburg, Virginia. Mr. Fox has an encompassing field of structural engineering experience. He has provided structural design on many types and size projects through out his career. One project of note is the 20 level, Courtland Complex located in Arlington, Virginia. The members of SCI are familiar with structural design and detailing of a wide range of building types.

At SCI, we have extensive experience in the structural design of office buildings, multi-family residential structures, elderly housing structures, one and two family residential structures, parking structures, schools, warehouses, government, manufacturing, institutional and industrial facilities. SCI has provided design and consulting structural engineering services on many structural rehabilitation and renovation projects.

Our experience in the design of many structural systems includes concrete, flat plate concrete, steel, composite steel, masonry, timber, prestressed concrete, and post tensioned concrete. We have ample experience with the design of precast / prestressed concrete, including architectural precast cladding. We also prepare light gage steel framing structural drawings and prepare shop drawings for the light gage steel industry.

SCI has worked as a secondary consultant as well as part of design / build construction teams. The resumes of our key personnel and an example list of projects have been enclosed for your review. We look forward to the opportunity to serve your firm.

### **Structural Concepts Inc.**

#### Contact Information:

132 W. Piccadilly St.  
Winchester, VA 22601

(540) 667-6174  
(540) 722-4748 fax

[jody@sci-engr.com](mailto:jody@sci-engr.com)  
[www.sci-engr.com](http://www.sci-engr.com)

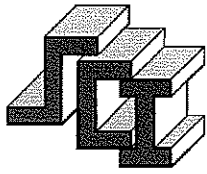
Year Established: 1988

#### Professional Liability

Insurance: \$1 M

#### Software:

AutoCAD  
RISA 3D  
RISA FLOOR  
Visual Analysis  
RAM Advance  
RAM Connection  
MS Office



## STRUCTURAL CONCEPTS, INC.

## Key Personnel



Mr. Fox has twenty-eight years experience in structural design, engineering management, cost estimating, structural inspections, and evaluation and remedial design of structural deficiencies. Mr. Fox is experienced in the design of many structural systems including concrete, steel, masonry, timber, prestressed concrete and tilt-up concrete construction. Mr. Fox is familiar with working as a secondary consultant as well as part of a design/build construction team.

### Project Experience:

Mr. Fox is experienced in the structural design of many building types including:

- Banks and Credit Unions
- Commercial Offices and Retail
- Educational
- Essential Facilities
- Government
- Industrial
- Institutional
- Medical Office
- Recreational
- Religious
- Residential, Multi-Unit
- Residential, Single Family
- Renovation and Rehabilitation Projects
- Water Treatment Plants

### Duties:

As President, Mr. Fox is in charge of all daily operations including project initiation, and quality control. Mr. Fox is the primary point of contact for all clients. As chief structural engineer, Mr. Fox is responsible for the structural design of all projects. Mr. Fox coordinates with Architects, Owners, and Contractors to determine the best structural system for the project. Mr. Fox coordinates with the design team the location of structural members and oversees the development of structural documents. Mr. Fox reviews all structural documents before they are issued. Mr. Fox works with the project engineer and staff engineer in the development of structural documents and assists the engineering team with the resolution of requests for information, construction problems or conflicts as they may occur during construction.

### Jody A. Fox, PE President

Position: President / Chief  
Structural Engineer

Years Experience: 28

Years at SCI: 21

#### Education:

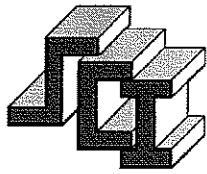
BS Civil Engineering  
(Structural Emphasis)  
Virginia Tech, 1982

#### Professional Registration:

Professional Engineer in  
Virginia, West Virginia,  
Pennsylvania, Maryland,  
District of Columbia

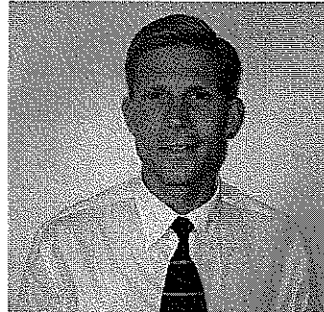
#### Professional Organizations:

Member of  
American Institute of  
Steel Construction,  
American Society of Civil  
Engineers,  
American Concrete  
Institute,  
Cold Formed Steel  
Engineers Institute



## STRUCTURAL CONCEPTS, INC.

## Key Personnel



### **Hans Stamberg, PE Project Engineer**

Position: Project Structural  
Engineer

Years Experience: 8

Years at SCI: 5

**Education:**

MS Structural Engineering  
Univ. of Conn., 2000

BS Civil Engineering  
Univ. of Md., 1998

**Professional Registration:**

Professional Engineer in  
Virginia

**Professional Organizations:**

Member of  
American Institute of  
Steel Construction, and  
Cold Formed Steel  
Engineers Institute

Mr. Stamberg is experienced in structural design and drafting utilizing AutoCAD. He is certified as a Professional Engineer. His experience in design of building systems includes the materials steel, concrete, tilt up concrete wall panels, masonry, cold formed light gage steel, and wood. Mr. Stamberg is familiar with working as a secondary consultant as well as part of a design/build construction team.

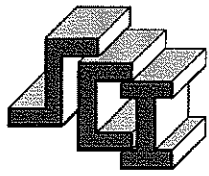
### **Project Experience:**

Mr. Stamberg is experienced in the structural design of many building types including:

- Banks and Credit Unions
- Commercial Offices and Retail
- Educational
- Industrial
- Medical Office
- Religious
- Residential, Multi-Unit
- Residential, Single Family
- Renovation and Rehabilitation Projects

### **Duties:**

Mr. Stamberg's duties at Structural concepts consist of building design and quality control. The building design responsibilities begin with schematic design development which then evolves into final contract documents. During the construction phase of the building projects Mr. Stamberg reviews shop drawings and works with the design team and contractors to solve construction problems. The quality control part of his responsibilities is to perform in house reviews of structural documents prior to release.



## **STRUCTURAL CONCEPTS, INC.**

## **Key Personnel**



### **Jeff Layman Staff Engineer**

Position: Staff Structural  
Engineer

Years Experience: 15

Years at SCI: 10

Education:  
BS Civil Engineering  
Virginia Tech, 1995

Professional Organizations:  
Member of  
American Institute of  
Steel Construction

Mr. Layman is experienced in the structural and hydraulic branches of civil engineering. His experience in design of building systems includes the materials steel, concrete, masonry and wood. Mr. Layman's communication skills include the Spanish language. Mr. Layman is familiar with working as a secondary consultant as well as part of a design/build construction team.

### **Project Experience:**

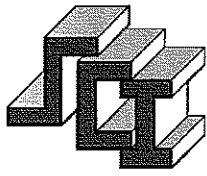
Mr. Layman is experienced in the structural design of many building types including:

- Banks and Credit Unions
- Commercial Offices and Retail
- Educational
- Government
- Essential Facilities
- Industrial
- Medical Office
- Recreational
- Religious
- Residential, Multi-Unit
- Residential, Single Family
- Renovation and Rehabilitation Projects

### **Duties:**

Mr. Layman focuses on project design in his role as Staff Engineer. He calculates loads based on the applicable building code and sizes framing members. He evaluates and details the connections between elements to produce a continuous load path from the roof to the foundation. He considers loads from both wind and earthquakes in each lateral analysis. He creates building plans, sections and details using computer aided drafting software, AutoCAD. He coordinates needs and results with clients during the design process. He reviews shop drawings submitted as elements of large projects and is available throughout construction to answer field questions. Mr. Layman is vigilant for new technical resources for the office.





The following list is not exhaustive but intended to give a sample of the large variety of projects completed by SCI.

### Example Projects:

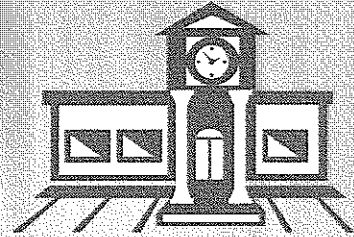
#### Banks and Credit Unions:

- BB&T Operations Center, Frederick County, VA  
Featured in Project Profile
- Navy Federal Credit Union Call Center, Frederick County, VA  
Featured in Project Profile
- Valley Farm Credit Building – Winchester, VA  
Featured in Project Profile
- Middleburg Bank, Middleburg, VA
- Bank of Clark County, Winchester, VA
- Apple Federal Credit Union, Winchester, VA

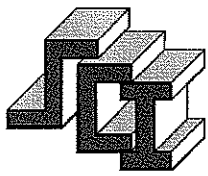
#### Commercial Office and Retail:

- Prince William Town Center Building 6, Manassas, VA  
Featured in Project Profile
- 3801 University Drive, Fairfax, VA  
Featured in Project Profile
- Essroc Italcementi Group Administration Building #32, Martinsburg, WV
- Edwin Miller Boulevard Office Building, Martinsburg, WV
- Tackley Mill Center, Building 4, Ranson, WV
- The Landing at Park View, Winchester, VA
- CMDS Headquarters, Harrisonburg, VA
- Commonwealth Center, Sterling, VA
- Commonwealth Center, Phase II, Sterling VA
- Advince Commons, Charlottesville, VA
- Overland Center, Sterling, VA
- Steeple Chase 95, Building A4, Prince William County, MD
- Mercure Lots 11 & 12, Buildings A & B, Loudoun County, VA
- First Park Manassas, Buildings C, D, and K, Prince William County, VA
- Markey Business Center, Buildings 2 & 3, Gainesville, VA
- Gum Spring Village Center, Buildings 1 & 2, Loudoun County, VA
- Gum Spring Auto Wash and Lube Shop, Loudoun County, VA
- Wilton Meadows, LLC, Manassas, VA
- Strober Supply, Loudoun County, VA
- Quality Tire, Martinsburg, WV
- Baronwood Showroom and Warehouse, Sterling, VA
- Warren Electric, Hagerstown, MD
- Ward-Aikens Office Building, Winchester, VA

Page 1







### Educational:

- John Handley High School Renovation and Expansion, Winchester, VA Featured in Project Profile
- Clark County High School, Berryville, VA
- Jefferson Scholars Foundation and Center for Graduate Fellows, Charlottesville, VA Featured in Project Profile
- Chatham Hall Renovation and Auditorium Addition, Chatham Hall, VA
- Sacred Heart Academy Addition, Winchester, VA
- America On Line Childcare Facility, Dulles, VA
- Brunswick Middle School, Brunswick, MD
- Powhatan School Addition, Boyce, VA
- Braddock Street United Methodist Church Education Building Addition, Winchester, VA
- Morgan County Public Library, Berkeley Springs, WV

### Essential Facilities:

- Millwood Station Fire and Rescue Company 21, New Station House, Winchester, VA
- Millwood Station Fire and Rescue Company 21, Banquet Facility, Winchester, VA
- Greenwood Fire Station Addition, Winchester, VA

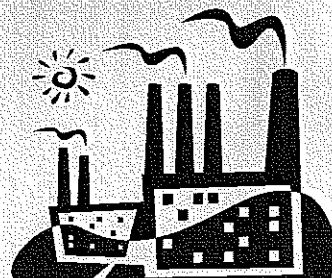
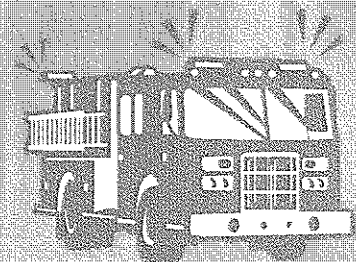
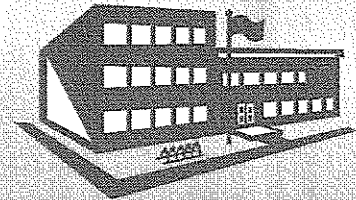
### Government:

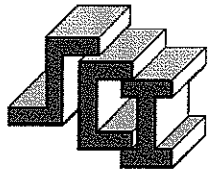
- United States Embassy Renovation and Addition, Vilnius, Lithuania
- United States Embassy Renovation, Riga, Latvia
- United States Embassy Renovation, Tallinn, Estonia
- Quarters 101 Renovation, USMA, West Point, NY
- United States Naval Academy Chapel Renovation, Annapolis, MD
- Census Bureau, Federal Office Building No. 3 Structural Repairs, Suitland, MD
- Martinsburg Intermodal Transportation Center, Martinsburg, WV
- Morgan County Observatory, Morgan County, WV

### Industrial:

- Mercury Paper Manufacturing Facility, Strasburg, VA Featured in Project Profile
- Euro Composites Manufacturing Facility, Culpeper, VA
- Pen Tab Manufacturing Facility, Front Royal, VA
- EcoLab Manufacturing Facility, Martinsburg, WV Featured in Project Profile

Page 2





## STRUCTURAL CONCEPTS, INC.

## Example Projects

- Bering Truck Manufacturing Plant, Warren County, VA
- Kingsdown Manufacturing Plant, Frederick County, VA  
*Featured in Project Profile*
- Kingsdown Addition, Frederick County, VA  
*Featured in Project Profile*
- Hill Storage Facility, Frederick County, VA
- Paxton Van Lines Addition, Manassas, VA
- Verizon Addition, Martinsburg, WV
- Lease Building Number 3, Winchester, VA
- Lease Building Number 3 Addition, Winchester, VA
- Jouan, Inc. Scientific Equipment Manufacturing Facility, Frederick County, VA
- HP Hood Addition, Frederick County, VA
- Special Made Manufacturing Facility, Fredrick County, VA
- Blue Ridge Industries Addition, Winchester, VA
- Winchester Cold Storage Addition, Winchester, VA
- Winchester Star Additions, Winchester, VA
- Rubbermaid Development Lab Expansion, Winchester, VA
- Free Lance Star Tilt Wall Panels, Fredericksburg, VA  
*Featured in Project Profile*
- Thermo Fisher Scientific Stabilization and Addition, Middletown, VA
- Walden Fish Production, Frederick County, VA
- RdV Vineyards, Delaplane, VA

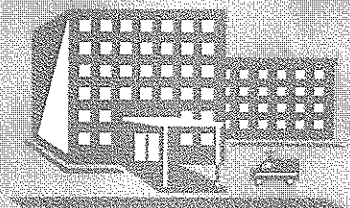
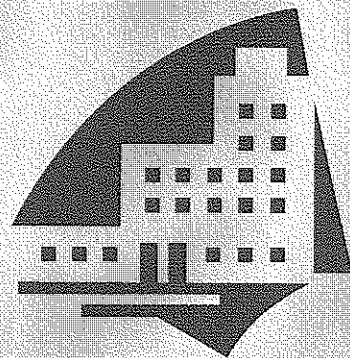
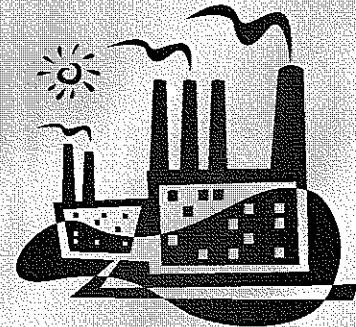
### Institutional:

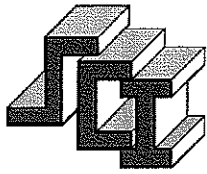
- Westminster Canterbury Housing Expansion, Winchester, VA  
*Featured in Project Profile*
- Westminster Canterbury Dining Expansion, Winchester, VA
- The Southerlands Assisted Living, Front Royal, VA
- Oak Springs Retirement Housing, Warrenton, VA
- Warren Memorial Lynn Care Physical Therapy Expansion, Front Royal, VA
- Frederick County Animal Shelter, Frederick County, VA
- Old Mill Kennel Veterinary, Leesburg, VA

### Medical Office Building:

- Our Health, Nicholson Building, Winchester, VA
- Our Health, Lineburg Building, Winchester, VA
- Our Health, Community Service Building, Winchester, VA
- Mount Jackson Family Practice Expansion and Renovation, Mount Jackson, VA
- LaRose Medical Office Building, Winchester, VA
- LaRose Medical Office Building II, Winchester, VA
- Red Cross Building, Winchester, VA

Page 3





**Recreational:**

- Kiln Creek Country Club, Newport News, VA
- Kiln Creek Baseball Stadium, Newport News, VA
- Westwood Country Club Addition, Vienna, VA
- PB Dye Clubhouse and Maintenance Building, Ijamsville, MD
- Piedmont Country Club, Haymarket, VA
- Washington Golf and Country Club, Arlington, VA
- Hygeia Bath House and Spa, Capon Springs, WV
- Clark County VFW, Berryville, VA

**Religious:**

- Victory Church, Winchester, VA
- Fellowship Bible Church Addition, Winchester, VA
- Potomac Baptist Church, Sterling, VA
- 1<sup>st</sup> Baptist Church, Inwood, WV
- 1<sup>st</sup> Baptist Church Renovation and Additions, Winchester, VA
- Holy Cross Abbey Renovation and Additions, Berryville, VA
- Salvation Army Sanctuary Addition, Winchester, VA
- Lindale Mennonite Church, Lindale, VA

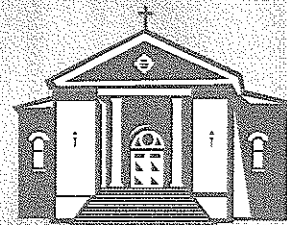
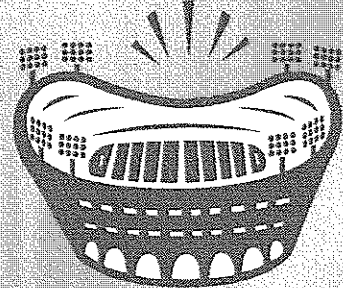
**Residential, Multi-Unit:**

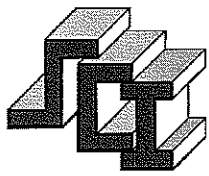
- Marriott Fairfield Inn and Suites, Winchester, VA
- Holiday Inn Express, Winchester, VA
- Holiday Inn Express, Stephens City, VA
- Country Inn and Suites, Kernstown, VA
- Capon Spring Main House Addition, Capon Springs, WV
- Austin House Renovation and Expansion, Capon Springs, WV

**Residential, Single Family:**

- Old Whitewood, Mark Ohrstrom Residence, The Plains, VA
- Barris Residence, McLean, VA
- Palmerstone, Clark Ohrstrom Residence, The Plains, VA
- Pollin Residence, Barnesville, MD
- LeBaron Farm, Cummings Residence, Culpepper, VA
- Schoch Residence, Middleburg, VA
- Barkus Residence, Jefferson County, WV

Page 4





**Renovation and Rehabilitation:**

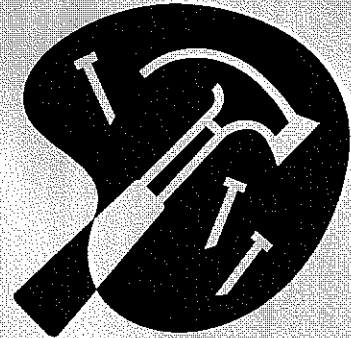
- Jefferson County Jail, Charles Town, WV
- Old Frederick County Courthouse, Winchester, VA
- McMurrin Hall, Shepherd University, Shepherdstown, WV
- The Bredimus Building, Leesburg, VA
- The Tally Ho Theatre, Leesburg, VA
- Washington Community Fellowship, Washington, DC
- Fleetwood Roller Mill, Paris, VA
- B&O Hotel, Martinsburg, WV
- The Waterford Mill, Waterford, VA
- Woolen Mill Renovation, Winchester, VA
- The Ashby Inn, Paris, VA
- Taylor Building, Berryville, VA
- Winchester School Board Office, Winchester, VA
- Daniel Morgan Middle School, Winchester, VA
- Handley High School Achievement Academy, Winchester, VA

**Water Treatment Plants:**

- Middletown Wastewater Treatment Facility Expansion, Middletown, VA
- Round Hill Waste Water Treatment Plant Expansion, Round Hill, VA
- Tackley Mill Waste Water Treatment Plant, Ranson, WV



**Page 5**





# Structural Engineering, Inc.

---

## Firm Profile

**CAS Structural Engineering, Inc.** – CAS Structural Engineering, Inc. is a West Virginia Certified Disadvantaged Business Enterprise structural engineering firm located in the Charleston, West Virginia area.

Providing structural engineering design and/or analysis on a variety of projects throughout the state of West Virginia, CAS Structural Engineering has experience in excess of 20 years on the following types of building and parking structures:

- Governmental Facilities (including Institutional and Educational Facilities)
- Industrial Facilities
- Commercial Facilities

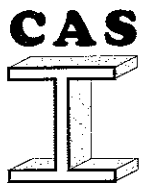
Projects range from new design and construction, additions, renovation, adaptive reuse and historic preservation (including use of The Secretary of the Interior's Standards for Rehabilitation) to evaluation studies/reports and analysis.

CAS Structural Engineering utilizes AutoCAD for drawing production and Enercalc and RISA 2D and 3D engineering software programs for design and analysis. Structural systems designed and analyzed have included reinforced concrete, masonry, precast concrete, structural steel, light gauge steel and timber.

Carol A. Stevens, PE is the firm President and will be the individual responsible for, as well as reviewing, the structural engineering design work on this project. While CAS Structural Engineering, Inc. has only been in business for nine years, Carol has over 20 years of experience in the building structures field, working both here in West Virginia and in the York, Pennsylvania vicinity. Carol is also certified by the Structural Engineering Certification Board for experience in the field of structural engineering.

CAS Structural Engineering, Inc. is covered by a \$1 million errors and omissions liability policy.





# Structural Engineering, Inc.

## Carol A. Stevens, P.E. Structural Engineer

### EDUCATION

West Virginia University, BSCE, 1984

Chi Epsilon National Civil Engineering Honorary  
The Pennsylvania State University, ME Eng Sci, 1989

### PROFESSIONAL REGISTRATION

P.E.	1990	Pennsylvania
P.E.	1991	West Virginia
P.E.	1994	Maryland
P.E.	2008	Ohio
P.E.	2010	Kentucky

### BACKGROUND SUMMARY

2001 – Present	President, Structural Engineer CAS Structural Engineering, Inc.
1999 – 2001	Structural Engineer Clingenpeel/McBrayer & Assoc, Inc.
1996 – 1999	Transportation Department Manager Structural Engineer Chapman Technical Group, Inc.
1995 – 1996	Structural Engineer Alpha Associates, Inc.
1988 – 1995	Structural Department Manager Structural Engineer NuTec Design Associates, Inc.
1982 – 1988	Engineer AAI Corporation, Inc.

### PROFESSIONAL ASSOCIATIONS

American Society of Civil Engineers  
National Society of Professional Engineers  
American Concrete Institute  
American Institute of Steel Construction  
West Virginia University Department of Civil and  
Environmental Engineering Advisory Committee Chair  
West Virginia University Institute of Technology  
Department of Civil Engineering Advisory Committee

### CIVIC INVOLVEMENT

ASCE Christmas in April Project  
Engineer's Week Speaker

P.O. Box 469

Alum Creek, WV 25003-0469

A West Virginia Certified DBE Consultant  
Certified in the Practice of Structural Engineering

### EXPERIENCE

**West Virginia, Canaan Valley Resort State Park:**  
Structural investigation and recommendations for repairs to the five (5) existing overnight sleeping facilities.

**West Virginia, Twin Falls Resort State Park Lodge Addition:** Structural design for new 28,000 SF addition to existing facility, including new entrance lobby, conference areas, sleeping rooms and indoor pool.

**West Virginia, Hawks Nest State Park Lodge:** Analysis of structural cracks in lodge building. Work included probes to determine condition of existing connections between structural elements.

**West Virginia, State Capitol Complex, Governor's Mansion:** Structural analysis and design in addition to evaluation report for modifications and renovations to several areas of mansion. Building is on State Historic Register and was constructed in the 1920's.

**West Virginia, State Capitol Complex, Holly Grove Mansion:** Structural evaluation report for preliminary condition assessment of building structure. Building is on State Historic Register and was constructed in the 1830's.

**West Virginia, State Capitol Complex, Main Capitol Building Parapet:** Exploratory investigation of limestone/brick parapet/balustrade of Main Capitol Building to determine cause of movement/cracking/ leaks. Construction contract for repairs has been completed. Building is on State Historic Register and was constructed in the 1920's and 1930's.

**West Virginia, Twin Falls Resort State Park:** Structural evaluation of existing recreation building.

**West Virginia, Pipestem Resort State Park:** Structural evaluation of existing recreation building.

**West Virginia, Cabwaylingo State Forest:** Structural evaluation of existing dormitory buildings constructed in the 1950's.

**West Virginia, State Capitol Complex, Main Capitol Building Dome:** Exploratory investigation of structural steel components of Lantern Level of dome and development of contract documents for repairs. Building is on State Historic Register and was constructed in the 1930's.

(304) 756-2564 (voice)

(304) 756-2565 (fax)

**West Virginia, Historic Putnam-Houser House (Parkersburg):** Designed system for stabilization and upgrades to floor framing of building that was constructed in the 1700's.

**West Virginia, Upshur County Courthouse:** Developed construction documents for structural repairs to main entrance, dome and monumental sandstone columns of 1899 structure. Work was recently completed and received a WVAIA Honor Award for Design Excellence.

**Ohio, Mahoning County Courthouse:** Completed preliminary structural observation report of exterior façade conditions to recommended phased repairs for terra cotta and granite façade. Building is on State Historic Register and was constructed in the early 1900's.

**West Virginia, State Capitol Complex, Building 5:** Structural design and analysis for support of new boilers and other mechanical equipment to be placed in mechanical penthouse.

**West Virginia, State Capitol Complex, Building 7:** Investigation and development of Construction Documents for new elevators.

**West Virginia, State Capitol Complex, Building 3:** Structural design and construction administration of repairs to limestone canopy. Building is eligible to be placed on State Historic Register and was constructed in the 1950's.

**West Virginia, State of West Virginia Office Building #21, Fairmont, WV:** Preliminary structural observation report for condition assessment of building structure.

**West Virginia, State Capitol Complex, Building 5:** Structural design and analysis for support of new boilers and other mechanical equipment to be placed in mechanical penthouse.

**West Virginia, Hampshire County Courthouse:** Structural design for new elevator for existing historic building.

**West Virginia, Shinnston Park:** Structural design of new outdoor pool.

### **PREVIOUS EXPERIENCE**

**West Virginia, State Capitol Building, North Portico Steps:** Designed structural system to replace deteriorated reinforced concrete slab at landing on north side of Capitol steps. Building is on State Historic Register and was constructed in the 1930's.

**West Virginia, Beech Fork State Park Pool, Bathhouse and Cabins:** Designed structure for new bathhouse, swimming pool and cabins.

**West Virginia, Moncove Lake State Park Pool:** Designed structure for new swimming pool.

**West Virginia, Upshur County Courthouse Annex:** Performed structural evaluation and design for repairs to existing multi-story Annex addition.

**West Virginia, Canaan Valley Resort and Conference Center:** Structural feasibility study to upgrade lodging units.

**West Virginia, West Virginia University Masterplan:** Investigated structural floor load capacity of several university buildings as a consultant to a large national architectural firm for masterplan.

**West Virginia, Morgantown High School Additions:** Designed steel framing and foundations for science classroom, cafeteria and gymnasium additions to existing education complex.

**Pennsylvania, Hampton Inn:** Structural design of new 5-story masonry and precast plank hotel building.

**Pennsylvania, Comfort Inn:** Structural design of new 5-story masonry and precast plank hotel building.

**Pennsylvania, Misericordia University:** Structural design of new 4-story masonry and precast plank dormitory building.

**Pennsylvania, Metropolitan Edison Company, Headquarters:** Structural design of new 80,000 SF two-story office addition to existing complex.

**Pennsylvania, York County Government Center:** Structural analysis and design of 1898 former department store converted to county government offices. Interior renovations included adding floor framing at mezzanine level, analyzing and redesigning deficient floor framing, and adding new elevators. Exterior renovations included complete façade rework to recreate original appearance.

**Pennsylvania, Metropolitan Edison Company, Headquarters:** Structural design for new 80,000 SF two-story office addition to existing complex.

**Pennsylvania, Defense Distribution Region East:** Structural engineering and design for a 33,000 SF Hazardous Materials Storage Warehouse.

**Maryland, U.S. Army Corps of Engineers, Baltimore District, Administration Building:** Structural design of new 10,000 SF masonry building.

**Comfort Design, Inc.**  
**Mechanical – Electrical - Plumbing Designs**  
**620 Pennsylvania Ave.**  
**Winchester, Virginia 22601**

Comfort Design, Inc. is a local small-business mechanical and electrical engineering design firm specializing in heating, air conditioning, plumbing and electrical for residential, commercial, public and industrial facilities. Comfort Design was incorporated as a completely separate business in 1995, to better serve the mechanical, plumbing and electrical design needs of the local industry. Comfort Design, Inc. has full mechanical and electrical design liability coverage from a local insurance agent. Copies and certification of coverage limits will be provided for any project requirements. Professional Engineer licenses cover Virginia, Maryland, Pennsylvania, Connecticut, Massachusetts, New Jersey, New Hampshire, Florida, Delaware, Arkansas and West Virginia.

Comfort Design, Inc. is fully automated to prepare electronic design drawings, which are compatible with AutoCAD Version 2011. Specification documents can be prepared on many of the new word processing programs (Microsoft Word, WordPerfect, Works, etc.).

The following is a **partial** listing of projects and clients which mechanical and/or electrical engineering designs have been provided in the past years:

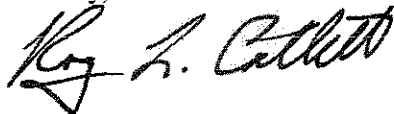
- George Washington Historic Hotel **Renovation**, Winchester, VA (Design/Construction)
- Calcagnini Retreat, Clarke County, Virginia (Design)
- Tuscan Ridge at Canaan Lodge, Davis WV (Design/Construction)
- Shenandoah Valley Discovery Museum, Winchester, VA, **Platinum LEED** (Design)
- Lucy School, Middletown, MD, LEED certification (Design/Construction)
- John S. Mosby Museum **Renovation**, Warrenton, VA (Design/Construction)
- 100 Room, 4 Story, Hampton Inn, Winchester, VA (Design/Construction)
- Hampton Inn **Renovation**, Virginia Beach, VA (Design)
- Hampton Inn, Clearfield, PA (Design/Construction)
- Hampton Inn, Chesapeake, VA (Design/Construction)
- Hampton Inn, Inwood, WV (Design/Construction)
- Hampton Inn, Middletown, DE (Design/Construction)
- Sleep Inn, Dover , DE (Design/Construction)
- Towneplace Suites, Stafford County, VA (Design/Construction)
- Days Inn **Renovation**, Winchester, VA (Design/Construction)
- Aloft (Tulane) Hotel, Winchester, VA (Design/Construction)
- Candlewood Suites, Winchester, VA (Design/Construction)
- CDA Spirituality Retreat Center **Renov.**, Frederick County, VA (Design/Construction)
- Comfort Inn & Suites, Leesburg, VA (Design/Construction)
- Comfort Suites, Frederick County, VA (Design)
- La Quinta Inn, Frederick County, VA (Design)
- La Quinta Inn & Comfort Suites Pool & Banquet Facility, Frederick Cty, VA (Design)
- Westminster-Canterbury Assisted Living Facility, Winchester, VA (Design/Construction)
- Westminster Canterbury Elderly Facilities **Renovation**, Winc, VA (Design/Construction)
- Country Inn & Suites, Hagerstown, MD (Design/Construction)
- Fairfield Inn & Suites, Frederick County, VA (Design/Construction)

- Holiday Inn, Chesapeake, VA (Design/Construction)
- 82 Apartment Complex, Ashland, VA (Design/Construction)
- Hilton Garden Inn, Suffolk, VA (Design/Construction)
- Hilton Garden Inn, Winchester, VA (Design/Construction)
- Timber Ridge Gymnasium, Frederick County, VA (Design/Construction)

As can be seen above, our projects cover a wide variety of specialized facilities and designs. American Disabilities Act, LEED criteria, energy efficiency, maintenance and life cycle costs are a normal part of our designs. By working many years in the local communities (Davis, Winchester, Martinsburg, Hagerstown, Warrenton, Manassas, Fairfax, and Front Royal), we have an excellent understanding of local codes and ordinances, and work very closely with local code authorities. Enclosed is the resume of the Senior Electrical Engineer, Mr. Michael Howell, P.E., and myself as the Senior Mechanical Engineer for Comfort Design, Inc. The company has two more Professionally Licensed Mechanical Engineers, a part-time mechanical engineering technician and a full-time electrical engineer.

We look forward to working with you on forthcoming projects. If you have any questions, please give us a call.

Sincerely,



Roger L. Catlett, P.E.  
President, Senior Mechanical Engineer  
Comfort Design, Inc.  
620 Pennsylvania Drive  
Winchester, VA 22601  
Phone: (540) 665-2846

# Comfort Design, inc.

Mechanical - Electrical Design

## RESUME

Name: Roger L. Catlett, P.E.  
Address: 365 Mule Skinner Lane  
Martinsburg, WV 25405

Phone: (540) 665-2846. Company: Comfort Design, Inc., 620 Pennsylvania Ave., Winchester, VA 22601

### Experience:

I am the President/Senior Mechanical/Plumbing Engineer for Comfort Design, Inc., Winchester, VA. I have provided mechanical/plumbing engineer designs (heating, air conditioning, plumbing, compressed air, high temperature oil systems, low/high pressure steam systems, **radiant floor, geothermal heat pump systems**, passive solar for architects, owners (fire halls, **hotels, retreat centers**, churches, offices, residential, stores), manufacturing companies (Mobil, Trex, O-Sullivan, Rubbermaid, Rich Products), school administrations (Winchester-Frederick County Area Schools), contractors and builders in the Virginia, Maryland and West Virginia areas (Howard Shockey & Sons, Minghini's General Contractors, Ricketts Construction and Lantz Construction). I have worked with historic renovation contractors (e.g. Mark M. Newland & Co.). Over 10 years experience in HVAC and plumbing designs for university and educational facilities. I have been a mechanical engineer for over 36 years. Been involved with 2 Platinum **LEED** certified projects and multiple **geothermal** jobs in past 15 years.

My current experience includes 18 years with the Army Corps of Engineers with previous assignments as Chief of the Mechanical and Electrical Design Division, Senior Design Manager for large central utility plants/systems (chilled water, potable water, waste treatment, electrical, HVAC, etc.) for military bases and I was senior in-country Mechanical Engineer in Saudi Arabia for 3 years from 9/83 to 8/86, resolving mechanical design problems with residential/industrial/military facilities.

From 5/77 to 3/81, I served as the Chief of the Facilities Engineering Branch for the Defense Fuel Supply Center, Alexandria, VA and prepared designs to meet EPA and OSHA regulations for Government fuel storage terminals.

### Education:

- Bachelor of Science Mechanical Engineering, West Virginia University, Morgantown, WV, May 1971.
- Master of Engineering Industrial Engineering, Texas A&M University, College Station, TX, May 1973.

### Active Registration:

- Professional Engineer Virginia License 10537; West Virginia License 7546 & Arkansas PE 12311
- Professional Engineer Maryland License 21575, Massachusetts License 43252 & Michigan 6201053472.
- Professional Engineer Pennsylvania License PE061360 & New Jersey P.E. License 24GE04397900.
- Professional Engineer Florida License 60346, New Hampshire License 11474 & Delaware 13999.
- Professional Engineer Connecticut License 25585
- Certified Heat Pump Technician, Refrigeration Service Engineers Society (RSES) Certificate #94110074
- Certified Universal Technician per 40 CFR part 82, subpart F, Proper Refrigerant Services, RSES Certificate #069400027.
- Master HVAC-Gas Fitter and Master Plumber Certified Card No. 2710 017036, Dept of Professional & Occupational Regulation, Richmond Virginia.

### Professional Affiliations:

- American Society of Heating, Refrigerating, & Air Conditioning Engineers (ASHRAE)
- American Society of Plumbing Engineers (ASPE)
- Pi-Tau-Sigma, National Honorary Mechanical Eng. Fraternity, 10/20/70.
- Alpha-Pi-Mu, Industrial Engineering Honor Society, 2/28/73

CLIENT REFERENCES: Contractors: Howard Shockey & Sons, Inc., Focus Construction, Lantz Construction and Ricketts Construction. Architects: Grove & Dall'Olio Architects, Design Concepts, Main Street Architecture, Harne Bowen Architects, Cushwa & Stouffer Architects. Government: Frederick County Department of Public Works, Frederick County Schools (VA) and Jefferson County Schools (WV).

620 Pennsylvania Avenue, P.O. Box 3273  
Winchester, Virginia 22604

Voice (540) 665-2846  
Fax (540) 665-0038



# Comfort Design, inc.

Mechanical - Electrical Design  
RESUME

## PERSONAL DATA:

Michael F. Howell, P.E.

## EDUCATION:

- Bachelor of Science, Electrical Engineering, Brigham Young University, 1971
- Master of Science of Administration, George Washington University, 1978
- Master of Public Administration, University of Virginia, 1985
- Numerous U.S. Army Corps of Engineers Technical and Management courses.

## EXPERIENCE:

- *April 1995 - Present:*  
Principle and Senior Electrical Engineer, Comfort Design, Inc. Winchester, VA. Prepare electrical power and lighting designs, drawings, and specifications for fire halls, schools, industrial, commercial, institutional, hotels, **retreat centers and housing facilities**. Projects successfully completed include Winchester Parking Garage, **Calcagnini Retreat Campus, Tuscan Ridge Canaan Lodge**, World-Wide Automotive, Walden Foods, Quality Tire, Oak Springs Apartments, Hampton Inn, Westminster-Canterbury Kitchen and Dining expansion, Westminster-Canterbury Assisted Living Facility, Middleburg Bank, Blue Ridge Bank of Inwood, Berryville Medical Office Building, Veterinary Hospitals, Powhatan School Classroom Buildings, Winchester Medical Center Business Offices, Winchester Church of God, Historic **George Washington Hotel Renovation, Winchester, VA** and other **LEED projects for schools/museums**.
- *March 1989 - Present:*  
Chief, Electrical Division, Transatlantic Programs Center, U.S. Army Corps of Engineers. Responsible for the work of seven electrical engineers and three engineering technicians. Provide design guidance, resolve technical issues, and assure quality of design for large, multi-facility, multi-hundred million dollar international construction programs. Broad range of experience in power distribution and utilization, exterior and interior lighting, security systems, fire alarm systems, telephone systems, data communication systems, etc.
- *Jun 1985 - March 1989:*  
Senior Electrical Engineer. Prepared original design and reviewed work of other engineers for a wide variety of industrial, institutional, and military facilities. Technical coordinator for the electrical requirements for the Voice of America international modernization program.
- *July 1971 - Jun 1985:*  
Journeyman electrical engineer for U.S. Army Corps of Engineers; Graduate student at University of Virginia; Engineering design project manager, U.S. Army Corps of Engineers; Project Manager for Naval Facilities Engineering Command; Electrical Engineer for construction office at U.S. Naval Academy; Electrical Design Engineer for Naval Facilities Engineering Command.

## PROFESSIONAL REGISTRATION:

- Professional Engineer #008875, Commonwealth of Virginia, 1976 to present.

CLIENT REFERENCES: Contractors: Howard Shockey & Sons, Inc., Focus Construction, Lantz Construction and Miller & Anderson, Inc. Architects: Grove & Dall'Olio Architects, Design Concepts, Main Street Architecture, Harne Bowe Architects and Cuswha & Stouffer Architects.

# TRIAD

TRIAD ENGINEERING, INC.

## TRIAD LISTENS, DESIGNS & DELIVERS

### ABOUT US

Triad Engineering, Inc. (TRIAD) is an employee-owned, full service firm specializing in the areas of civil and geotechnical engineering and design, environmental assessment, construction monitoring, subsurface exploration, laboratory testing, surveying and mining engineering, among other earth science disciplines.

TRIAD was founded in Morgantown, West Virginia (WV) in 1975. By providing an array of competent services, using modern equipment, and maintaining a well-trained professional staff, TRIAD has proven that customer satisfaction results in good relationships and repeat business.

### TRIAD ADVANTAGES

**MORE THAN 30  
YEARS OF LOCAL  
EXPERIENCE**

**PROFESSIONAL STAFF  
OF OVER 200  
EMPLOYEES**

**OFFICE LOCATIONS IN  
FOUR STATES**

**WIDE RANGE OF IN-  
HOUSE CAPABILITIES**

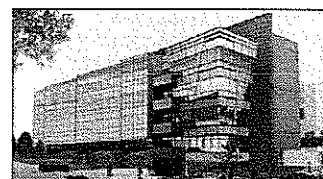
### TRIAD PERSONNEL

TRIAD HAS A WELL-  
TRAINED PROFESSIONAL  
STAFF READY TO HELP  
YOU MEET YOUR NEEDS  
AND REACH YOUR GOALS

- Civil, Geotechnical and Mining Engineers
- Geologists, Hydrologists, Chemists and Biologists
- Landscape Architects
- Surveyors
- CADD Specialists and Draftsmen
- Construction Inspectors and Field Technicians
- Drillers

### OUR SERVICES

- Engineering: Civil Design and Planning; Geotechnical & Foundations; Mining and Related Facilities; Stormwater Management
- Environmental: Phase I & Phase II Environmental Site Assessments; Asbestos, Mold and Lead-Based Inspections; Wetland and Forest Services, including Wetlands Delineation; Regulatory Compliance Assistance; UST Compliance; Permitting; Brown-field and Voluntary Remediation Assessments; Water Quality Sampling & Testing
- Drilling & Sampling: All staff are fully trained in OSHA HAZWOPER procedures. Diverse fleet of drilling rigs and support equipment; in-house engineering work as well as contracted services for government and private industry
- Construction: Monitoring; Inspection; Quality Assurance and Quality Control; Materials Testing
- Laboratory Testing: Soil; concrete; asphalt; aggregate
- Surveying & Mapping: Topographic & Planimetric; Design Surveys; Settlement Monitoring; Construction Layout; Subdivision Platting; ALTA / ACSM Surveys; Property Surveys
- Landscape Architecture: Master Planning; Land-Use Studies; Presentation Graphics; Streetscape Improvements; Site Selection, Inventory & Analysis; Disturbed Lands Restoration; Trail Studies; Parks and Recreation



### TRIAD HAS AN OFFICE NEAR YOU

#### West Virginia

##### Northern

219 Hartman Run Road  
Morgantown, WV 26505  
(304) 296-2562

##### Southern

4980 Teays Valley Road  
Scott Depot, WV 25560  
(304) 755-0721

#### Virginia

##### Western

200 Aviation Drive  
Winchester, VA 22602  
(540) 667-9300

##### Northern

21641 Beaumeade Circle, Ste. 300  
Ashburn, VA 20147  
(703) 729-3456

#### Maryland

1075-D Sherman Avenue  
Hagerstown, MD 21740  
(301) 797-6400

#### Pennsylvania

125 Hartman Road, Ste. C  
Greensburg, PA 15601  
(724) 832-9870

WWW.TRIADENG.COM

**L. Lee McCoy, Jr., P.E.**  
**Senior Engineer/Project Manager**

**EDUCATION**

B.S. Civil Engineering

West Virginia Institute of Technology, 1996

**REGISTRATIONS AND LICENSES**

Professional Engineer

No. 14731 West Virginia

No. 25932 Kentucky

No. 73186 Ohio

**DIRECT WORK EXPERIENCE AND PRIMARY RESPONSIBILITIES**

**Triad Engineering, Inc.** ,  
St. Albans, WV

Civil Engineering Group Manager/Senior Engineer  
2006 - Present

**Buchart Horn, Inc.,**  
Charleston, WV

Senior Engineer  
2003 - 2006

**City of Charleston,**  
Charleston, WV

City Engineer  
2001 - 2003

**Benatec Associates,**  
Hurricane, WV

Engineer III  
1999 - 2001

**Chester Engineers,**  
Huntington, WV

Engineer I  
1996 - 1999

**CURRENT POSITION RESPONSIBILITIES**

Mr. McCoy is currently the Department Manager for our Civil/Transportation Design Section and a Project Manager for the St. Albans office of TRIAD. In this capacity, he is responsible for the oversight of our civil engineering staff as well as the technical and management aspects of civil design and transportation projects within the office. Mr. McCoy has designed and managed projects in numerous disciplines including civil, structural and transportation engineering, site development, planning and surveying. These projects have included streets/highways, bridges, retail/commercial site preparation, airports, parking lots, buildings, retaining walls/foundations, sanitary structures, as well as recreational facilities. Duties included field surveying, drawings and specification preparation, design, design drafting, construction inspection, quality control testing, shop drawing review, project management, contract administration and report preparation.

**PROFESSIONAL ORGANIZATIONS/ASSOCIATIONS**

American Society of Civil Engineers

Society of American Military Engineers

## PROJECT EXPERIENCE SUMMARY

### ***Pendleton County Commission - Franklin, WV***

Project Manager and lead designer for a park project near Ruddle, WV. This park includes baseball fields, jousting field, parking facilities, exercise trails, and concession building. Mr. McCoy also managed the preparation of construction documents and aided in the bidding of the project. As Project Manager and Lead Engineer, provided technical supervision and oversight to the civil site design for the construction of this \$300,000 Recreational/ Sport Park. This project included grading, drainage, roadway design, parking lot design, as well as all aspects of designing a large multi use sports complex. As Project Manger, was also responsible ensuring that the site was able to acquire United States Corps of Engineers Permitting due to sensitive flood plan issues.

### ***Devonshire Development, Scott Depot, WV***

As Project Manager and Lead Engineer, Mr. McCoy, is responsible for the project design and construction administrative services for a large resort style mix use residential development located in Scott Depot, WV. This development consists of apartments, townhouses and condominiums, state-of-the-art 6500 sq ft clubhouse as well as swimming pools, Jacuzzis, sport courts, tot lots, and dog exercise areas. This project includes grading, drainage, permitting, parking lot design, as well as many other aspects.

### ***Marshall Foundation – Huntington, WV***

As Project Manager and Lead Designer, Mr. McCoy prepared construction documents for the construction of a 33,000 square foot alumni center in Huntington, WV. This project includes grading, drainage, roadway expansion, parking lot design, as well as many other aspects.

### ***Putnam County Office of Planning and Infrastructure, Putnam County, WV***

Contracted to Putnam County as Putnam County Engineer. In this position, Mr. McCoy performs site and building reviews and inspections countywide, for West Virginia's second fastest growing county.

### ***West Virginia Department of Transportation, Division of Highways, Charleston, WV***

#### ***American Church Bridge Replacement, Delbarton, WV***

Project Manager and lead roadway designer for the replacement of the American Church Bridge in Delbarton and related roadway work in Mingo County, WV. This project included managing structural engineers, geotechnical engineers, surveyors, other roadway engineers, and designers. Design work for this project included drainage, HEC-RAS analysis, roadway design, and right of way design.

### ***West Virginia Department of Transportation, Division of Highways, Charleston, WV***

#### ***Corridor H, U.S. 48 – Scherr, WV***

Project Manager and lead roadway designer for 2.25 miles of 4 lane divided highway in Grant County, WV. This project included managing structural engineers, geotechnical engineers, surveyors, other roadway engineers, and designers. Worked closely with West Virginia Department of Transportation personnel as well as local residents during the highways design through the environmentally sensitive Greenland Gap area.

### ***West Virginia Department of Transportation, Division of Highways, Charleston, WV***

#### ***U.S. 460 – I77 Interchange, Princeton, WV***

Project Manager and lead roadway designer for replacement of existing bridge over I-77 in Mercer County, WV. This project included managing structural engineers, geotechnical engineers, surveyors, other roadway engineers, and designers. Worked closely with West Virginia Department of Transportation personnel during the Maintenance of Traffic planning stages to maintain traffic flow during construction at this very busy interchange.

**Steven R. Spradling, M.S., P.E.**  
*Senior Engineer*

**EDUCATION**

BS, Civil Engineering	West Virginia Institute of Technology, 1974
MS, Civil Engineering	West Virginia College of Graduate Studies, 1992

**REGISTRATIONS AND LICENSES**

Registered Professional Engineer	West Virginia
Member Association of State Dam Safety Officials	

**DIRECT WORK EXPERIENCE AND PRIMARY RESPONSIBILITIES**

<b>Triad Engineering, Inc.,</b> St. Albans, WV	Senior Engineer 1995 - Present
<b>Triad Engineering, Inc.,</b> St. Albans, WV	Project Engineer 1991 - 1995
<b>Kimberly Industries, Inc.,</b> Charleston, WV	Project Engineer 1984 - 1991
<b>Armco Mining Construction,</b> Dunbar, WV	Associate Civil Engineer 1979 - 1984
<b>Eagle Mining Industries,</b> Charleston, WV	Associate Civil Engineer 1975 - 1979

**CURRENT POSITION RESPONSIBILITIES**

Mr. Spradling is currently a Senior Engineer at the St. Albans branch of TRIAD. In this capacity, Mr. Spradling has formulated and implemented subsurface investigations on numerous projects. These projects have included freshwater dams, landslides, shopping centers, landfills, roadway/bridges, buildings, retaining walls, reinforced slopes, and structures for coal mining facilities. Duties included assignment of laboratory testing, visual inspection of soil/rock specimens, and formulation of geotechnical engineering reports. Mr. Spradling was responsible for the design and preparation of drawings and specifications for a 50 ft. high reinforced concrete principal spillway riser and outlet pipe at a recently completed dam. Mr. Spradling's strong background in the construction industry provides TRIAD with a reliable source in preparing bid documents and evaluating construction bids. Mr. Spradling is very familiar with the West Virginia Department of Environmental Protection Dam Safety Regulations and has worked closely with this regulatory agency in design and permitting of several water impounding structures.



## PROJECT EXPERIENCE SUMMARY

### ***Snowshoe Mountain Resort, Snowshoe, WV***

As Senior Engineer, Mr. Spradling designed a new water supply dam and designed a modification for an existing water supply dam for the Snowshoe Mountain Resort. Mr. Spradling was responsible for all facets of the analysis, design, and construction inspection for the earth fill water supply dams, including geotechnical analysis and design, borrow study, seepage analysis, construction dewatering, hydraulic analysis and design. Included in this project was the design of a reinforced concrete intake and outlet structure. These were fast track projects which required meeting extremely accelerated schedules. The projects also included attending pre-construction, periodic inspection, and final inspection meetings. The project also included participating in project administration during construction.

### ***West Virginia Department of Transportation***

As Senior Engineer, Mr. Spradling is responsible for many geotechnical aspects of highway design and construction including new highways and upgrades to existing roads. On these projects the work is generally performed on a subcontract basis for various consulting engineering firms responsible for the highway design. However, much of the work requires working directly with WVDOT personnel. Duties on these highway projects include preparing subsurface investigation plans, assigning laboratory testing for soil and rock materials, performing retaining wall analyses, providing foundation recommendation for bridges, providing cut and fill slope recommendations, performing slope stability analysis, and preparing subsurface investigation reports. The work includes analyzing the behavior of piles and caissons subjected to lateral load and performing pile drivability studies. The work also includes providing geotechnical support services for highway construction.

### ***West Virginia Department of Environmental Protection***

As Senior Engineer, Mr. Spradling was responsible for the remedial design of several abandoned refuse piles known as Pinnacle Refuse Piles located in southern West Virginia. This project included design of drainage structures, slope stability analysis, slope design and civil site design. The project also included leading the pre-bid and pre-construction meetings.

### ***Subsurface and Foundation Investigations***

Mr. Spradling has performed subsurface and foundation investigations for various private business and industrial firms. These projects required working closely with the client to provide the needed engineering services. The projects consisted of performing subsurface investigations and analysis and recommending appropriate foundation types based on the results of the subsurface investigation. The projects also involved estimating potential settlement, delineating potential subsurface problems, and provided related recommendations regarding the geotechnical aspects of the projects. A geotechnical report was prepared and provided to the client for each project. Mr. Spradling has also designed foundation systems for buildings and free standing towers.

### ***American Electric Power***

Mr. Spradling performed design services for several AEP projects. These projects included a drilled pile wall to stabilize a landslide which was threatening an AEP substation in St. Albans, WV. He also designed a 100 ft. high reinforced slope and associated site grading as part of the Kammer Station Expansion project near Moundsville, WV. Another AEP design project consisted of a stream bank stabilization project at the Huff Creek Substation in Logan County, WV.

### ***Columbia Gas Transmission***

Mr. Spradling designed temporary shoring for a Columbia Gas Transmission gas line repair project in Seneca, West Virginia. This repair project required deep excavation very near a major highway and other structures. Mr. Spradling also designed temporary shoring for a Columbia Gas Transmission for a major pipeline relocation project near Richmond, Virginia.

**William M. Ernstes, ASLA**  
**Senior Landscape Architect**

**EDUCATION**

BS, Landscape Architecture

West Virginia University, Morgantown, WV, 1994

**REGISTRATIONS AND LICENSES**

Registered Landscape Architect

West Virginia (#279)  
Maryland (#3315)  
Virginia (#812)  
Pennsylvania (#2809)

**DIRECT WORK EXPERIENCE AND PRIMARY RESPONSIBILITIES**

**Triad Engineering, Inc.**  
Morgantown, WV

Senior Landscape Architect  
2008 - Present

**Stantec Consulting**  
Morgantown, WV

Project Manager / Branch Manager  
1994 - 2008

**West Virginia University**  
Morgantown, WV

Visiting Instructor, Division of Resource Mgmt.  
2000 - 2007

**PROFESSIONAL ORGANIZATIONS / ASSOCIATIONS**

American Society of Landscape Architects (ASLA), Member  
West Virginia American Society of Landscape Architects (WV ASLA),  
2008 President, 2009-2010 Treasurer  
Cheat Neck Planning District Advisory Committee (CNPDAC), Member

**CURRENT POSITION RESPONSIBILITIES**

Mr. Ernstes is currently a Senior Landscape Architect within the Civil Engineering & Landscape Architecture department at TRIAD's Morgantown office, which provides professional services in the areas of site inventory and analysis, planning, landscape architecture, land development, civil engineering, permitting, infrastructure development, utility relocation, storm water management design and best management practices, storm drain design, erosion and sedimentation control, and highway design. In this capacity, his responsibilities include project management, client project coordination, design production, quality control and quality assurance, and proposal and contract development.

As Senior Landscape Architect, Mr. Ernstes provides clients with a variety of landscape architectural services and land development services including site inventory and analysis, program production, conceptual design, design development, high quality graphic presentations, project management, construction document preparation, construction administration, feasibility studies, residential and commercial land development applications, rezoning and special exception applications, grading and drainage analysis, and marketing exhibits.

## PROJECT EXPERIENCE SUMMARY

### ***Forty Four Jones Place, Morgantown, WV***

Responsible for preparation of planning documents for a 257 bed, 157 unit mixed use residential apartment project located in Sunnyside close to West Virginia University. Work involved preparation of Zoning Map Amendment outline plan, written statement and exhibits and representation at planning commission meetings, ward meetings, and work session meetings.

### ***Lofts of WVU, Morgantown, WV***

Project Designer responsible for development of a 22 acre, 196+ unit student housing development located near the West Virginia University Medical campus. Project scope included preparation of layout, grading and utility plans, water and sewer public utility extension coordination with the Morgantown Utility Board, storm drainage and storm water management design, and erosion and sediment control.

### ***Falling Water, Morgantown, WV***

Project Manager responsible for development of a 194-acre, 300+ unit planned residential development adjacent to Cheat Lake. An initial Master Plan was followed by Construction Plans for the first two phases of the development. Project entailed permitting through WVDEP, USACOE, DNR & US fish and wildlife, Public Land Corporation and the WVSHPO. Surveying tasks that have been completed throughout this ongoing project have been Aerial mapping, Record Platting, Construction Stakeout, Asbuilt topography and setting of property corners. Marketing Illustratives were later prepared for marketing and publications.

### ***Nestled Oak, Morgantown, WV***

Project Manager responsible for Construction Plans to construct a 23 lot single family residential development. Project scope included preparation of residential layout, grading and utility plans, public utility extension, storm design, adequate outfall analysis, erosion and sediment control. Project scope also included topographic mapping, record plat, and construction stakeout.

### ***Landing @ Sunset Beach, Morgantown, WV***

Project Manager responsible for a Feasibility Study and Marketing Exhibits for a 29 lot mixed use residential development to be constructed in the Sunset Beach area near Cheat Lake. This 3 acre development consisted of 21 single family detached lots and 8 townhome lots. Upon completion of the feasibility study, marketing illustratives were prepared using Adobe Photoshop for publishing in the Homes and Land journal publication.

### ***Windwood Village, Morgantown, WV***

Project Manager responsible for a Feasibility Study for mixed use residential development. This development encompassed over 13 acres consisting of 116 residential units (single family detached and multifamily units) and related community recreation amenities and SWM/BMP planning. Upon completion of the feasibility study, an illustrative was prepared using Adobe Photoshop for client project marketing.

### ***Broadlands South, Arcola, VA***

Project Manager responsible for preliminary subdivision plans for this mixed use planned unit development. Development encompassed 1,465 residential units (single family detached, single family attached, single family patio, and multifamily units) and related commercial, parks and community uses. Adhered to proffered regulations and coordinated with applicable federal, state, and local agencies for approvals.

### ***Red Cedar West, Loudoun County, VA***

Project Manager responsible for Construction Plans & Profiles for a 39 lot hamlet residential subdivision. Project scope included preparation of collector roadway frontage improvements, public utility extension, storm design, adequate outfall analysis, erosion and sediment control, public residential roadway design and residential layout and grading. Project scope also included completion of record plat, associated offsite easement plats including a boundary line adjustment plat, right of way dedication plat and easement plat.

*Utilities Group Manager*

## EDUCATION

**B.S. Civil Engineering**

West Virginia Institute of Technology, 1994

## CERTIFICATIONS, REGISTRATIONS AND LICENSES

Registered Professional Engineer

## West Virginia

Registered Professional Engineer

Ohio

Registered Professional Engineer

Virginia

America's Registry of Outstanding Professionals 2002 / 2003

2002 / 2003

## Cambridge Who's Who

2007 / 2008

Cambridge Who's Who - VIP

2009 / 2010

## DIRECT WORK EXPERIENCE AND PRIMARY RESPONSIBILITIES

**Triad Engineering, Inc.,**  
St. Albans, WV

Utilities Group Manager  
2006-present

**QK4**

## Senior Project Manager

Charleston, WV

2003-2006

**S&S Engineers, Inc.,**  
Charleston, WV

Project Manager  
1999-2003

**Dunn Engineers, Inc.,**  
Charleston, WV

Project Manager  
1995-1999

**Dunn Engineers, Inc.,**  
Charleston, WV

Staff Engineer  
1994-1995

## PROFESSIONAL ORGANIZATION/ASSOCIATIONS

American Society of Civil Engineers (ASCE)

## CURRENT POSITION RESPONSIBILITIES

Mr. Ramsey brings 16 years of design and project management experience to Triad Engineering. He has been involved in all aspects of water and wastewater engineering as well as general civil engineering. Mr. Ramsey came to Triad in 2006 to provide technical assistance and project management on complex and sensitive wastewater and potable water projects. In his current capacity Mr. Ramsey works on the planning, coordination, design, and construction of civil engineering projects to meet the expectations and needs of the client. Mr. Ramsey has experience in environmental engineering, civil engineering, wastewater collection, storm water conveyance, and water distribution systems, as well as wastewater and water treatment plants and storm water pollution control. Duties have included line layout, hydraulic analysis, pump and booster station designs, water storage tank design, pressure reducing station design, and plant layout and design. Mr. Ramsey has vast experience in dealing with funding and regulatory agencies. He has been instrumental in helping clients obtain loans and grants for their projects.

## PROJECT EXPERIENCE SUMMARY

### ***Town of Belle Sanitary Board***

Performed a Sanitary Sewer Evaluation Study (SSES) on the entire wastewater treatment and collection system. Study included system mapping, Closed Circuit Television (CCTV) of over 15 miles of collection line, smoke testing, manhole inspections, evaluation of problem areas and corrective measures, cost estimates, and report preparation.

### ***WV American Water***

Prepared a raw water source study on Shaver's Lake, which feeds the Snowshoe Resort. Study included projections of future demand, existing and future capacities, and potential sources of contamination as well as remediation techniques.

### ***Green Valley Glenwood PSD***

Performed a preliminary engineering study for the water treatment plant upgrade and new raw water intake system, including purchasing of the Dr. Dan Hale reservoir. The water plant upgrade consists of increasing the capacity from 600 gpm to 2,000 gpm by installing a new presedimentation basin, new filters, replacing all pumps, expansion of the underground clearwell and other improvements.

### ***Silverton PSD***

Design of 18 miles of water line, two (2) water storage tanks, two (2) booster stations, and one (1) pressure reducing station to serve 300+ customers throughout the district. Total estimated project cost \$4,500,000.

### ***South Putnam PSD***

Wrote the Storm Water Management Plan that encompasses 3/4 of the Putnam County. Report focused on water quality as it relates to NPDES MS4 as well as water quantity.

### ***Habitat for Humanity (City of Charleston)***

Design of the streets, wastewater collection, water distribution, and storm water collection systems for a 50 lot subdivision located within the City of Charleston.

### ***International Coal Group (ICG) Site***

Preparation of construction plans for the ICG Corporate Headquarters (Total \$6.4 million). Plans included grading, drainage, utilities, lighting, landscaping, and erosion control in compliance with Putnam County Regulations.

### ***Town of Winfield Planning Commission***

Serves as the Planning Director for the Commission. Responsibilities include subdivision and building permit review to insure compliance with regulations.

### ***Buffalo Creek PSD***

Wrote the preliminary report for a \$6.6 million dollar sanitary sewer project. The project included new sanitary sewer lines along WV Route 10 and the Greenville and Taplin areas of Logan County. Also included is an upgrade to the main lift station and conversion of the chlorine contact chamber into ultra-violet disinfection. The new system will serve over 500 customers.

### ***City of Glenville***

Wrote the facilities planning report for a wastewater treatment plant upgrade, which included a sequencing batch reactor (SBR), belt filter press, additional clarification, and headworks as well as the collection system extension to various areas of the City and to the proposed \$100 million Federal Prison. Total estimated project cost \$7,500,000.

**David F. Spriggs, L.S., P.S.**  
**Surveying Services Manager**

**REGISTRATIONS AND LICENSES**

Land Surveyor

Virginia, License No. 001853,  
West Virginia, License. No 2086

**DIRECT WORK EXPERIENCE AND PRIMARY RESPONSIBILITIES**

**Triad Engineering, Inc.**  
Winchester, VA

Surveying Services Manager  
1996 - Present

**PHR&A**  
Winchester, VA

Field Crew Coordinator/Survey Computer  
1990 - 1996

**PHR&A**  
Fairfax, VA

Field Crew Chief/Survey Computer  
1978 - 1990

**CURRENT POSITION RESPONSIBILITIES**

Mr. Spriggs is currently the Surveying Services Manager for the Winchester, Virginia office of TRIAD. In this capacity, Mr. Spriggs' responsibilities include complete management of the land surveying division, including client contact and relations, field crew management, office computations and drafting, field surveying, deed research, and preparation of plats.

**PROJECT EXPERIENCE SUMMARY**

***WVDOH - Corridor "H", Hardy County, WV***

Surveying for the boundary location of all affected properties for right-of-way acquisition, verification of existing aerial mapping with cross-sections at 100-meter intervals, stake-out of structure and roadway borings, cross sections of stream channels and stake-out of final centerline alignment on approximately 15.3 miles of new roadway.

***WVDOH - Corridor H, South Branch Potomac Bridge, Hardy County, WV***

Project included all aspects of related to survey layout services for the placement of 2,139 foot long bridge spanning the South Branch of the Potomac River in Moorefield. This included the layout of seven (7) piers, pier caps, anchor bolts, deck slabs, bridge seats and girder placement.

***Caldwell-Santmyer, Frederick County Public Schools, Frederick County, VA***

As Licensed Surveyor, managed all aspects related to the construction of the two new elementary schools. Project included plan review and analysis, office computations for all infrastructure and building construction, and final record drawing preparation.

***Delta Airport Consultants - Virginia State Route 645, Frederick County, VA***

Project Licensed Surveyor responsibilities included all aspects related to survey layout services for the relocation of approximately 1.2 miles of State Route 645, Airport Road. Responsibilities included the accurate layout of all sewer, water and storm water management infrastructure. Additional responsibilities include layout and final asbuilts of the centerline, edge of pavement and ditch lines associated with the construction of the new road bed and final paving of relocated Route 645.





11349 N 117<sup>th</sup> Way  
Scottsdale, AZ 85259  
602 432 7878

E-Mail: [mjdavey@shooting-academy.com](mailto:mjdavey@shooting-academy.com)  
Web Site: [www.shooting-academy.com](http://www.shooting-academy.com)

## THE SHOOTING ACADEMY

Principal: Michael John Davey English, Born London, September 1948  
Education: HND in Mathematics, Statistics, Computer Science and Economics

History:

- 1969 Graduated and employed as Systems Analyst in London
- 1975 Employed by Digital Equipment Co. as System Software Engineer.
- 1978 Became Senior System Programmer and Lecturer at DEC Training.
- 1982 Started own Company "Structured Data Systems" providing Medical Data Base Systems throughout Europe and USA.
- 1987 Started second Company Cairnsmore Leisure for design and installation of Leisure Facilities and Shooting Ranges. Developed a computer controlled Hunting Simulation game called "Supersport" using live ammunition. This is patented in England.
- 1988 Engaged in design of major Shooting Facility "Blackcraig Ranch" in Southwest Scotland. Funding provided by Scottish Tourist Board, European Economic Community Funds and myself. During this time I also prepared a prospectus for a Shooting Resort to be built by Costain Builders in South of Spain.
- 1989 Objections from local authorities and Courts forced the Scottish project into zoning appeal, requiring retainer of Queen's Council. Court costs became too prohibitive, so I withdrew and the project was cancelled. At this time there was interest in my designs and "Supersport" so I moved to the USA.
- 1990 Formed a company "The Shooting Academy" and became Laporte's Importer for Automatic Traps to the US. Established a dealer network for Laporte and commenced shooting range designs.
- 1992 Opened my own range "Trail Ridge" on leased land in Kansas City, Missouri incorporating Sporting Clays, Trap, Skeet, Rifle and Pistol. Continued to design shooting ranges. Made design changes to Laporte Trap equipment.
- 1994 Moved to Scottsdale, Arizona and "Trail Ridge" passed back to the leaseholder. Traveled to France every few months to assist in development of equipment and designed Shooting Range for Antibes, South of France and installed equipment in Jebel Ali and AlQuain Shooting Ranges in UAE.
- 1996 Retained by Laporte Ball Trap, France to write complete set of Instruction and Maintenance manuals for their range of trap equipment (four months during that year).
- 1999 Having designed and installed over 30 Sporting Clay Ranges (Private and Commercial) and installed over 1800 traps, I won the contract for designing "The World's Best Sporting Clay Range" for Joe Hardy, owner of 84 Lumber and Nemacolin Woodlands Resort and Spa in Pennsylvania.

- 2000 Designed major shooting facility for Private Banker in Carmel, California. This should have "topped" Nemacolin incorporating two Sporting Clay Courses, Olympic Trench, Indoor Rifle and Pistol, Outdoor Military Grade Shooting Range, Hogan's Alley and Projection Simulation. He was also going to build a resort and golf club. Unfortunately, the Banker died on Christmas Day 2001 and his wife cancelled the project.
- 2001 Designed a private course for Commercial Real Estate Investor in Maryland. This was a complete "Turn-Key" package where I took sole charge of the project supplying all contractors. Completed in four weeks! Won contract to design Corporate Shooting Facility for Riley Creek lumber in Idaho. Work to commence in November 2002. Completed installation of Nemacolin Woodlands Resort Sporting Clay Range in Pennsylvania.
- 2002 Designing new ATA Double Trap Equipment for Laporte and appraising new Sporting Clay Course in Baltimore, Maryland. Won contract for design of Sporting Clay, Trap & Skeet club in Nebraska, USA. This is a total "Turn-Key" project at a installed price of \$282,000. Work to commence March 2003
- 2003 Contracted by W Atkins in Abu Dhabi to design the Abu Dhabi International Shooting Club. This facility includes all Shotgun Sports, Rifle and Pistol ranges, Lazar simulation and training facilities for Military specialists, diplomats and private bodyguards. The total project is expected to exceed \$100 million. Commenced private shooting range in Idaho for owner of Riley Creek Lumber, incorporating 40 foot tower, Compact Sporting Lodge and 28 automatic traps.
- 2004 Continued visits back to Abu Dhabi working under the guidelines of Sheik Mohamed Bin Zayed (ruler of Abu Dhabi). Contracted to evaluate and make suggestions for the El Ain discarded military shooting range in Abu Dhabi, with views to re-opening for private / commercial use. Also designed and installed Canoe Creek Sporting Clays in Lexington, Kentucky. Designed new trap control sequencers and logic for automatic traps.
- 2005 Continued visits back to Abu Dhabi which will become the World's greatest Shooting Facility designed to hold any major shooting event. With 200 room hotel, equestrian center, Polo field, sports arena, football fields, Go-Kart, Motor-Cross and Health Club, this facility is designed to attract tourists into the Gulf area. Continued new design work for Laporte Traps. Completed Riley Creek facility in Idaho.
- 2006 Contracted for redesign of Birds' Landing Shooting Ranges in California. New design for resort range at Jackson Hole, Wyoming. Designed extension to Ambassador Roger's Shooting Range in Tennessee. Two months in Abu Dhabi.
- 2007 Design of 3 "private" ranges, Florida, Indiana and California, plus commercial range attached to vacation complex in Wyoming. Continued overseeing of Abu Dhabi project. Evaluation of alternative ammunition (frangible) for use in 300m outdoor ranges to limit ricochet.

- 2008 Design of commercial range in Dallas for vacation, adventure camp for youths, corporate entertainment and training. Abu Dhabi continues now estimated to exceed \$400m... Redesign of private surgeon's range in Corpus Christie.
- 2009 Five months spent in Abu Dhabi finalizing project ready for early 2010 opening. Recruiting and interviewing staff for project, defining operation structure, operation rules and procedures. Setting up meeting with major manufacturers and suppliers of weapons and ammunition. Consultation for government ranges in Uganda. Entered into tender for 12 shooting ranges in Saudi Arabia. Design of major sporting clay range in Arkansas – proposed to be largest sporting clay range in US incorporating five, eighteen station courses plus 6 Compak decks and flush fields, due for commencement in March 2010 and completed in early 2011
- 2010 Design of major Sporting Clay Range in Alabama, re-visit Arkansas range, add additional 36 station woodland sporting clay course and recruit shooting manager from UK. Proposal for shooting range in Damman, Syria. Proposal for project in Virginia (Franklin, Suffolk County) for shotgun, but primarily for rifle / pistol. Install new Compak Sporting Clay course to existing client's private range in N Idaho – New project for Malayan Special Forces in Kuala Lumpa.....

Services offered.

Although my specialty is the design and installation of Sporting Clay Courses, I also design Indoor and Outdoor Rifle & Pistol Shooting Ranges. Part of my service is the evaluation of the proposed facilities and recommendations for marketing, managing and the selection of Manager and Staff.

Regards



My website: [www.shooting-academy.com](http://www.shooting-academy.com)

Mike Davey



December 17, 2001

Michael Davey  
The Shooting Academy  
5640 E. Bell Road, #1051  
Scottsdale, AZ 85254

Dear Mike:

Maggie and I would personally like to thank you for the superb Sporting Clay Course you designed and incorporated into our Resort.

We asked you to produce us "The Best Sporting Clay Facility in the World" and you did. Veteran shooters and industry professionals alike have often confirmed this after visiting and shooting the course.

The Shooting Academy at Nemacolin Woodlands Resort and Spa has definitely proved an asset to the Resort. Besides a new revenue source, it has also generated additional room occupancy with many return bookings.

Feedback from guests, who have shot the course, reveal a high degree of entertainment satisfaction, and your formula for providing a facility whereby resort guests, who have never shot before, can enjoy themselves equally alongside professional shooters, is definitely proving successful.

Our fame for the Pete Dye designed Golf Course and the Clodagh designed Spa, can now be added to with our Mike Davey designed Sporting Clay Range.

We have no reservations in recommending your services to anyone who would like to call us.

Yours truly,

  
Joseph A. Hardy

/cjh

  
Margaret Hardy-Magerko



SEP 24 2002

CHIEF OF STAFF TO THE PRESIDENT  
THE WHITE HOUSE

September 15, 2002

The Honorable Joe M. Rodgers  
Suite 101  
2000 Glen Echo Road  
Nashville, Tennessee 37215

Dear Ambassador Rodgers:

Thank you for your recent letter and for forwarding Michael Davey's promotional brochure and video presentation. Please know that Mr. Davey's information on a shooting range at Camp David has been forwarded to the White House Military Office for their review.

Again, thanks for taking the time to write and for your continued good work in Tennessee.

Sincerely,

Andrew H. Card, Jr.

AHC:jm



BROWNING INTERNATIONAL, S.A.  
Parc Industriel des Hauts-Sarts, 3ème Avenue, B-4040 Herstal (Belgium)  
Phone: + 32.4.240.52.11 . Fax: + 32.4.240.52.12

Mr. Mike Davey  
The Shooting Academy  
Nemacolin Woodlands Resort & Spa  
1001, LaFayette Drive,  
Farmington,  
Pennsylvania 15437  
USA

BI/BC/sd/99124

October 27, 1999

Dear Mike,

NEMACOLIN is the most beautiful place I have had the privilege to visit, and I have visited quite a few. You have done a wonderful job in the design and layout of a magnificent and unique course.

I think it is needless for me to say how much I enjoyed my stay at the Resort and wish to thank you for the invitation to attend such an important meeting.

I have given Charles Guevremont, C.O.O. of Browning North America, personally and in detail, a description of the event. They will certainly be getting in touch with The Shooting Academy. I was especially interested in the ProShop and I hope a mutually advantageous collaboration can be worked out between the Academy and Browning.

Thank you again for a wonderful weekend.

Yours truly,

Benjamin COLAS  
Chief Executive Officer  
Browning International





**STEVENS  
ENGINEERING**

Stevens Engineering is recognized throughout North America for responsive planning and engineering design. With nearly 30 years of service to its clients, Stevens Engineering is an accomplished source for passenger ropeway engineering, planning and design of lift and trail systems, snow tubing park design and mountain surveying.

Lift relocation engineering and the design of upgrades and modifications to existing lift installations are technical specialties at the core of the firms' capabilities. Stevens Engineering frequently assists lift manufacturers with the design of new installations, major lift upgrades and lift profile surveying. Ski area clients often seek out the technical expertise and the knowledge of governing standards and regulations Stevens Engineering has to offer for assistance in preparing comprehensive and result-oriented bid specifications for future lift purchases and for expert witness representation.

Contact: Ross Stevens, P.E. 215 Sargent Road New London, New Hampshire 03257  
Ph: 603-526-2493 Fax: 603-526-2003 email: [steveng@tds.net](mailto:steveng@tds.net)  
[www.stevens-engineering.com](http://www.stevens-engineering.com)



**STEVENS  
ENGINEERING**

P.O. Box 1945 New London, NH 03257  
Tele: (603) 526-2493 Fax: (603) 526-2003

## **PROFESSIONAL PROFILE**

**Ross A. Stevens, P.E.**, President, STEVENS ENGINEERING  
215 Sargent Road  
P.O. Box 1945  
New London, NH 03257

## **SPECIALIZED PROFESSIONAL COMPETENCE**

<b>Passenger Ropeways:</b>	Planning, Engineering Design, Analysis, Inspection,
Aerial Ropeways	Relocation Engineering, Upgrades, Modifications,
Surface Lifts	Due Diligence Surveys, Dynamic Testing,
Conveyors	Maintenance Consulting, Accident Investigation,
	Profile Surveying, Construction Engineering
<b>Snow Tubing Parks:</b>	Planning & Engineering Design, Terrain Dynamics Evaluation
<b>Civil Engineering:</b>	Site Planning, Engineering Design, Surveying, Permitting
<b>Structural Engineering:</b>	Engineering Design, Analysis, Inspection

## **PROFESSIONAL BACKGROUND**

**Registered Professional Engineer** and Qualified Tramway Engineer in: Maine, Maryland  
New Hampshire, Vermont, Connecticut, Massachusetts,  
New York, Pennsylvania, Michigan, Utah,  
Wisconsin, New Jersey, Colorado, Idaho, Iowa, Tennessee,  
West Virginia, Wisconsin, Ontario, New Brunswick  
**Bachelor of Science Degree** in Civil Engineering University of Massachusetts, Amherst - 1974  
**Entered Profession in 1974**

## **AFFILIATIONS**

**NATIONAL TRAMWAY STANDARDS BOARD** – Member from 2000 - 2006

**AMERICAN NATIONAL STANDARDS INSTITUTE** - ASC B77 Accredited  
Standards Committee - American National Standard for Passenger Tramways,  
Committee Member

**OITAF-NACS** - International Organization for Transportation by Rope, North  
American Continental Section, Member

**NSAA** - National Ski Areas Association, Member

**OSRA** - Ontario Ski Resorts Association, TSSA/OSRA Technical Advisory Committee

**SENH** - Structural Engineers of New Hampshire, Member

**State of New Hampshire**, Governor's Office of Emergency Management - ACT-20  
Post-Earthquake Building Safety Evaluation Engineer



**STEVENS  
ENGINEERING**

**SELECTED CLIENTS  
FOR THE  
MOUNTAIN RESORT INDUSTRY**

Squaw Valley - CA	Nashoba Valley - MA
CNL Lifestyles, LLC - FLA	Amesbury Sports Park - Amesbury, MA
Arrowhead Ski Area - NH	Blue Hills Ski Area - Canton, MA
Mount Isenglass Snow Park - NH	Conservation Tourism, LTD - MA
Attitash - NH	Aon-Reed Stenhouse - ON
Cannon Mtn. - NH	Searchmont - ON
Crotched Mountain, Francistown, NH	Horseshoe Valley - ON
Dartmouth Skiway, NH	Craigleith Ski Club - ON
Gunstock, NH	Cassels Brock & Blackwell - ON
Willis of New Hampshire	Dale Intermediaries Ltd. - Toronto, ON
Kaser North America - Grantham, NH	Hidden Valley Highlands Ski Club - ON
Mount Cranmore - North Conway, NH	Hughes, Amys - Toronto, ON
Mount Sunapee State Park, NH	Zurich Canada - Toronto, ON
Star Lifts, Sunapee, NH	Snow Valley - Barrie, ON
State of NH - Dept. of Parks and Recreation	Berthoud Pass, CO
Proctor Academy, NH	Breckenridge, CO
Rowell Hill - NH	Howelson Hill, CO
Moose Mountain - NH	Jenlynn International, Inc. - Boulder, CO
Ragged Mountain - NH	Stadeli USA - Boulder, CO
Whaleback - Lebanon, NH	Doppelmayr USA - Golden, CO
Bretton Woods - NH	Poma of America - CO
Waterville Valley - Waterville Valley, NH	Ski Snowstar - Ill
King Ridge - New London, NH	Sun Valley Company - Idaho
Snow Hill at Eastman - NH	Mt. Crescent - Iowa
Sno-engineering, Inc. - Littleton, NH	Sleepy Hollow Sports Park - Iowa
Poma of America - West Lebanon, NH	Norway Mountain - MI
Ragged Mountain, NH	Ski Brule - MI
Tenney Mountain - New Hampshire	Mt. Bohemia, MI
Mountain Creek - NJ	Porcupine Mountain - MI
Hidden Valley - NJ	U.S. Gypsum, MI
Ober Gatlinberg, TN	Whiteface - Olympic Regional Development
Burke Mtn. - VT	Authority - Wilmington, NY
Round Top, VT	Catamount - NY
Bolton Valley, VT	Mount Peter, NY
Stratton Mountain - VT	Gore Mountain - NY
Mount Snow - VT	Partek Enterprises, Inc. - Pine Island, NY
Smugglers Resort - VT	USMA, West Point - NY
Haystack, VT	Big Tupper - NY
Mount Mansfield Resort - Stowe, VT	Snow Park Niagara - NY
Round Top, VT	Scotch Valley, NY
Sugarbush Resort - Warren, VT	Hunt Hollow, NY
Mad River Glen - Fayston, VT	Ski Windham - NY
Magic Mountain, VT	Royal Mtn. - NY
Jay Peak Resort - Jay, VT	Belleayre Ski Center - NY
Middlebury Snow Bowl - Middlebury, VT	Whitetail Ski Company - Mercersburg, PA
Bear Creek - VT	Laurel Mountain State Park - PA
Wachusett Mountain - Princeton, MA	Boyce Park Ski Area - Pittsburg, PA
Otis Ridge - MA	Willowbrook - PA
Ski Bradford - MA	Ski Big Bear - PA



## References

---

### References for Grove & Dall'Olio Architects:

Mr. Mark Baldwin  
City of Martinsburg, City Manager  
232 North Queen Street / Martinsburg, WV 25401  
304 264-2131  
markbaldwin17@aol.com  
Mr. Baldwin has been GDA's client contact on the Old B&O Hotel Conversion, Caperton Station, "For the Kids - by George", and the Martinsburg Town Square redesign.

Derek J. Nicholls  
Essroc, Vice President of Manufacturing  
1826 South Queen Street/ Martinsburg, WV 25401  
304 260-1826  
Derek.Nicholls@essroc.com  
Mr. Nicholls has been the key contact for this multi-million dollar expansion of Martinsburg's Capitol Cement Facility. GDA has designed four administration and industrial buildings for this plant in excess of \$10 million.

Mr. Robert Mayhew  
Loy Foundation, Chairman  
P. O. Box 876 / Romney, West Virginia 26757  
304 822-3531  
mayhewcars@citlink.net  
Mr. Mayhew has been the lead contact working with Ms. Dall'Olio on the new Loy Cultural Center in Romney.

Mr. Timothy Cooke, Associate Medical Center Director  
Martinsburg VA Medical Center  
510 Butler Avenue / Martinsburg / 25405  
304 263-0811 x4004  
Timothy.Cooke@va.gov  
Mr. Cooke has been GDA's principal client contact the new executive offices at the Martinsburg facility.

Ms. Patsy Nolan  
Commissioner, Jefferson County Commission  
124 E. Washington Street  
Charles Town, WV 25414  
304 728-3284  
pnoland@jeffersoncountywv.org  
Ms. Nolan was the Jefferson County Clerk at the time of the "Old Jail" Courthouse Annex renovation project and attended many construction progress meetings with Mr. Grove.

*Patricia A. Noland  
Jefferson County Circuit Clerk  
P. O. Box 1234  
Charles Town, WV 25414*

*Telephone No. (304) 728-3231*

*Facsimile No. (304) 728-3398*

September 11, 2008

Matthew W. Grove AIA  
Grove & Dall'Olio Architects PLLC  
218 W. King Street  
Martinsburg, WV 25401

Re: Jefferson County Jail Restoration

Dear Mr. Grove,

I want to convey to you my sincere thanks and appreciation for the work you performed and advice that you provided to me before and during the project to restore the former Jefferson County Jail Building. The transformation is truly incredible.

I will admit that I was skeptical that the space would prove to be as efficient and useful as it has proven to be. While I always knew that the building had the potential to be a beautiful building, I was not completely sold on the idea that it would be an efficient space from which to conduct county business.

I remember years ago, when I was a Magistrate, coming into what was, at that time, the Sheriff's office and the working jail to conduct arraignments. I was always in awe of the beautiful woodwork and the incredible fireplaces. I am very grateful that the original woodwork, (including the hardwood floors) fireplaces and windows, as well as two of the original light fixtures, were all restored to their original luster.

I knew the building had potential, but I also wondered how it would fit in with conducting county business. It had, after all, been built to be a jail. The addition of the atrium and the enclosure of the small room that I use as my criminal division are both charming additions that have proven to be useful, efficient and esthetically pleasing.

While I so enjoy seeing old buildings restored to their highest potential, I was not certain that it could be transformed into an efficient office space for county government and courtroom space for the Family Courts.

Let me take this opportunity to say, that the finished product has far exceeded my expectations in the functionality aspect of the daily operations of the Office of the Circuit Clerk.

You and the crew from Rockwell Construction, including the superintendent, the construction manager and the crew were all great to work with. The construction crew were always professional and courteous in my contact with them. It was very gratifying to see the pride they took in the work they performed daily in the restoration of the building.

Thank you again for all you have done to make this mission a huge success. The completed project is one of which we can all be proud.

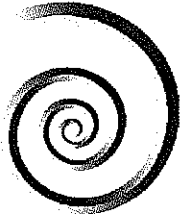
Sincerely

A handwritten signature in black ink, appearing to read "Patricia Noland". The signature is fluid and cursive, with the first name "Patricia" written in a larger, more prominent script than the last name "Noland".

Patricia A. Noland  
Jefferson County Circuit Clerk

Cc: Rockwell Construction





**CTG USA LLC**  
Italcementi Group

Tel (304) 260-5900  
Fax (304) 260-5655

December 16, 2009

Matthew W. Grove  
Grove & Dall'Olio Architects  
220 West King Street  
Martinsburg, WV 25401

Re: Letter of Recommendation  
Essroc-Italcementi New Line Facility  
Martinsburg, WV

Dear Matthew,

Now that the Administration Building is complete, I want to take this opportunity to express my appreciation for the work you and your office have put in to making this plant the flagship plant for our North American operations as a result of your firm's excellent design solution. This project has had a profound effect on management and employees perception of their work environment enhancing the work ethic and ultimately contributing greatly to raise the overall operational standards.

For anyone who is considering employing Grove & Dall'Olio Architects, they should know that your office began collaborating with us developing cost estimates for conceptual designs of about ten buildings at our new plant. Our Construction Management team was so impressed with your firm's abilities, they expanded your role in this project to Architect of Record. GDA recommended combining several buildings in order to reduce construction costs and assisted us in the decision process by providing detailed and timely information.

In all, your firm designed the Main Control Building, the Administration Building, the Warehouse, the Electrical Maintenance Building and Main Entrance Security Building for our Martinsburg Plant. Moreover you did it in a manner that maintained a level of continuity throughout.

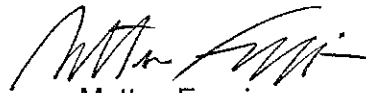
Your ability to collaborate with our diverse team and to maintain an effective level of communication with many and sometimes colliding players has been impressive and key to the successful outcome of the project.

Your attention to detail and creative choice of building materials were both thoughtful and meshed well with the new work environment Italcementi has put in place at the Martinsburg Plant. In particular, I enjoyed working with you directly on the interior furnishings and finishes. Throughout the course of the project, your office met every deadline we placed before you and you were always quick to respond to comments and calls from my office.

I particularly appreciated your ability to couple "green" solutions with our concerns over costs: we all recognize that it takes ingenuity to propose solutions that afterward appear to be common sense.

In meetings with all of the players present, you conducted yourself in a courteous and professional manner and in particular with the general contractor, their subcontractors and their employees. I would strongly recommend your office to anyone seeking architectural and engineering services and that they know that this \$10 million project was handled with ease and precision by your firm.

Best regards,

A handwritten signature in black ink, appearing to read 'Matteo Faggin', with a stylized, flowing script.

Matteo Faggin  
Project Engineer



State of West Virginia  
Department of Administration  
Purchasing Division  
2019 Washington Street East  
Post Office Box 50130  
Charleston, WV 25305-0130

# Request for Quotation

RFQ NUMBER
DNRB11006

PAGE
2

ADDRESS CORRESPONDENCE TO ATTENTION OF
FRANK WHITTAKER 304-558-2316

RFQ COPY

TYPE NAME/ADDRESS HERE

DIVISION OF NATURAL RESOURCES  
PARKS & RECREATION SECTION

324 4TH AVENUE  
SOUTH CHARLESTON, WV  
25303-1228 304-558-3397

RFQ COPY

RFQ COPY

DATE PRINTED	TERMS OF SALE	SHIP VIA	F.O.B.	FREIGHT TERMS
08/03/2010				

OPENING DATE: 08/31/2010 BID OPENING TIME 01:30PM

LINE	QUANTITY	UOP	CAT. NO.	ITEM NUMBER	UNIT PRICE	AMOUNT
EXHIBIT 10						
REQUISITION NO.: .....						
ADDENDUM ACKNOWLEDGEMENT						
I HEREBY ACKNOWLEDGE RECEIPT OF THE FOLLOWING CHECKED ADDENDUM(S) AND HAVE MADE THE NECESSARY REVISIONS TO MY PROPOSAL, PLANS AND/OR SPECIFICATION, ETC.						
ADDENDUM NO.'S:						
NO. 1 <input checked="" type="checkbox"/> .....						
NO. 2 .....						
NO. 3 .....						
NO. 4 .....						
NO. 5 .....						
I UNDERSTAND THAT FAILURE TO CONFIRM THE RECEIPT OF THE ADDENDUM(S) MAY BE CAUSE FOR REJECTION OF PROPOSALS.						
VENDOR MUST CLEARLY UNDERSTAND THAT ANY VERBAL REPRESENTATION MADE OR ASSUMED TO BE MADE DURING ANY ORAL DISCUSSION HELD BETWEEN VENDOR'S REPRESENTATIVES AND ANY STATE PERSONNEL IS NOT BINDING. ONLY THE INFORMATION ISSUED IN WRITING AND ADDED TO THE SPECIFICATIONS BY AN OFFICIAL ADDENDUM IS BINDING.						
..... SIGNATURE						

SEE REVERSE SIDE FOR TERMS AND CONDITIONS

DATE	8/28/2010	TELEPHONE	304-267-2120	FEIN	55-074-7182	ADDRESS CHANGES TO BE NOTED ABOVE
PARTNER						

WHEN RESPONDING TO RFQ, INSERT NAME AND ADDRESS IN SPACE ABOVE LABELED 'VENDOR'



State of West Virginia  
Department of Administration  
Purchasing Division  
2019 Washington Street East  
Post Office Box 50130  
Charleston, WV 25305-0130

# Request for Quotation

RFQ NUMBER
DNRB11006

PAGE
3

ADDRESS CORRESPONDENCE TO ATTENTION OF
FRANK WHITTAKER 304-558-2316

RFQ COPY

TYPE NAME/ADDRESS HERE

V  
E  
N  
D  
O  
R

DIVISION OF NATURAL RESOURCES  
PARKS & RECREATION SECTION

324 4TH AVENUE  
SOUTH CHARLESTON, WV  
25303-1228 304-558-3397

S  
H  
I  
P  
T  
O

DATE PRINTED	TERMS OF SALE	SHIP VIA	F.O.B.	FREIGHT TERMS
08/03/2010				

OPENING DATE:	08/31/2010	BID OPENING TIME	01:30PM
---------------	------------	------------------	---------

LINE	QUANTITY	UOP	CAT. NO.	ITEM NUMBER	UNIT PRICE	AMOUNT
------	----------	-----	----------	-------------	------------	--------

GROVE + DALL'OLIO ARCHITECTS  
COMPANY

..... 8/28/2010 .....  
DATE

NOTE: THIS ADDENDUM ACKNOWLEDGEMENT SHOULD BE SUBMITTED  
WITH THE PROPOSAL.

REV. 09/21/2009

BANKRUPTCY: IN THE EVENT THE VENDOR/CONTRACTOR FILES  
FOR BANKRUPTCY PROTECTION, THE STATE MAY DEEM THE  
CONTRACT NULL AND VOID, AND TERMINATE SUCH CONTRACT  
WITHOUT FURTHER ORDER.

## NOTICE

A SIGNED EOI MUST BE SUBMITTED TO:

DEPARTMENT OF ADMINISTRATION  
PURCHASING DIVISION  
BUILDING 15  
2019 WASHINGTON STREET, EAST  
CHARLESTON, WV 25305-0130

THE EOI SHOULD CONTAIN THIS INFORMATION ON THE FACE OF  
THE ENVELOPE OR THE EOI MAY NOT BE CONSIDERED:

SEALED EOI

SEE REVERSE SIDE FOR TERMS AND CONDITIONS		
TELEPHONE	DATE	
FEIN	ADDRESS CHANGES TO BE NOTED ABOVE	

WHEN RESPONDING TO RFQ, INSERT NAME AND ADDRESS IN SPACE ABOVE LABELED 'VENDOR'



State of West Virginia  
Department of Administration  
Purchasing Division  
2019 Washington Street East  
Post Office Box 50130  
Charleston, WV 25305-0130

# Request for Quotation

RFQ NUMBER
DNRB11006

PAGE
4

ADDRESS CORRESPONDENCE TO ATTENTION OF
FRANK WHITTAKER 304-558-2316

RFQ COPY

TYPE NAME/ADDRESS HERE

DIVISION OF NATURAL RESOURCES  
PARKS & RECREATION SECTION

324 4TH AVENUE  
SOUTH CHARLESTON, WV  
25303-1228 304-558-3397

DATE PRINTED	TERMS OF SALE	SHIP VIA	F.O.B.	FREIGHT TERMS
08/03/2010				
OPENING DATE:	08/31/2010	BID OPENING TIME	01:30PM	

LINE	QUANTITY	UOP	CAT NO	ITEM NUMBER	UNIT PRICE	AMOUNT
BUYER:				44		
EOI. NO.:				DNRB11006		
BID OPENING DATE:				08/31/2010		
EOI OPENING TIME:				1:30 PM		
PLEASE PROVIDE A FAX NUMBER IN CASE IT IS NECESSARY . TO CONTACT YOU REGARDING YOUR PROPOSAL:						
304 267-2884						
CONTACT PERSON (PLEASE PRINT CLEARLY):						
LISA DALLONIO						
***** THIS IS THE END OF RFQ DNRB11006 ***** TOTAL:						

SEE REVERSE SIDE FOR TERMS AND CONDITIONS

ATURE	TELEPHONE	DATE
FEIN	ADDRESS CHANGES TO BE NOTED ABOVE	

WHEN RESPONDING TO RFQ, INSERT NAME AND ADDRESS IN SPACE ABOVE LABELED 'VENDOR'



## References

---

### References for Grove & Dall'Olio Architects:

Mr. Mark Baldwin  
City of Martinsburg, City Manager  
232 North Queen Street / Martinsburg, WV 25401  
304 264-2131  
markbaldwin17@aol.com  
Mr. Baldwin has been GDA's client contact on the Old B&O Hotel Conversion, Caperton Station, "For the Kids – by George", and the Martinsburg Town Square redesign.

Derek J. Nicholls  
Essroc, Vice President of Manufacturing  
1826 South Queen Street/ Martinsburg, WV 25401  
304 260-1826  
Derek.Nicholls@essroc.com  
Mr. Nicholls has been the key contact for this multi-million dollar expansion of Martinsburg's Capitol Cement Facility. GDA has designed four administration and industrial buildings for this plant in excess of \$10 million.

Mr. Robert Mayhew  
Loy Foundation, Chairman  
P. O. Box 876 / Romney, West Virginia 26757  
304 822-3531  
mayhewcars@citlink.net  
Mr. Mayhew has been the lead contact working with Ms. Dall'Olio on the new Loy Cultural Center in Romney.

Mr. Timothy Cooke, Associate Medical Center Director  
Martinsburg VA Medical Center  
510 Butler Avenue / Martinsburg / 25405  
304 263-0811 x4004  
Timothy.Cooke@va.gov  
Mr. Cooke has been GDA's principal client contact the new executive offices at the Martinsburg facility.

Ms. Patsy Nolan  
Commissioner, Jefferson County Commission  
124 E. Washington Street  
Charles Town, WV 25414  
304 728-3284  
pnoland@jeffersoncountywv.org  
Ms. Nolan was the Jefferson County Clerk at the time of the "Old Jail" Courthouse Annex renovation project and attended many construction progress meetings with Mr. Grove.



*Patricia A. Noland  
Jefferson County Circuit Clerk  
P. O. Box 1234  
Charles Town, WV 25414*

*Telephone No. (304) 728-3231*

*Facsimile No. (304) 728-3398*

September 11, 2008

Matthew W. Grove AIA  
Grove & Dall'Olio Architects PLLC  
218 W. King Street  
Martinsburg, WV 25401

Re: Jefferson County Jail Restoration

Dear Mr. Grove,

I want to convey to you my sincere thanks and appreciation for the work you performed and advice that you provided to me before and during the project to restore the former Jefferson County Jail Building. The transformation is truly incredible.

I will admit that I was skeptical that the space would prove to be as efficient and useful as it has proven to be. While I always knew that the building had the potential to be a beautiful building, I was not completely sold on the idea that it would be an efficient space from which to conduct county business.

I remember years ago, when I was a Magistrate, coming into what was, at that time, the Sheriff's office and the working jail to conduct arraignments. I was always in awe of the beautiful woodwork and the incredible fireplaces. I am very grateful that the original woodwork, (including the hardwood floors) fireplaces and windows, as well as two of the original light fixtures, were all restored to their original luster.

I knew the building had potential, but I also wondered how it would fit in with conducting county business. It had, after all, been built to be a jail. The addition of the atrium and the enclosure of the small room that I use as my criminal division are both charming additions that have proven to be useful, efficient and esthetically pleasing.

While I so enjoy seeing old buildings restored to their highest potential, I was not certain that it could be transformed into an efficient office space for county government and courtroom space for the Family Courts.

Let me take this opportunity to say, that the finished product has far exceeded my expectations in the functionality aspect of the daily operations of the Office of the Circuit Clerk.

You and the crew from Rockwell Construction, including the superintendent, the construction manager and the crew were all great to work with. The construction crew were always professional and courteous in my contact with them. It was very gratifying to see the pride they took in the work they performed daily in the restoration of the building.

Thank you again for all you have done to make this mission a huge success. The completed project is one of which we can all be proud.

Sincerely

A handwritten signature in black ink, appearing to read "Patricia Noland". The signature is fluid and cursive, with the first name "Patricia" written in a larger, more prominent script than the last name "Noland".

Patricia A. Noland

Jefferson County Circuit Clerk

Cc: Rockwell Construction



**CTG USA LLC**  
Italcementi Group

Tel (304) 260-5900  
Fax (304) 260-5655

December 16, 2009

Matthew W. Grove  
Grove & Dall'Olio Architects  
220 West King Street  
Martinsburg, WV 25401

Re: Letter of Recommendation  
Essroc-Italcementi New Line Facility  
Martinsburg, WV

Dear Matthew,

Now that the Administration Building is complete, I want to take this opportunity to express my appreciation for the work you and your office have put in to making this plant the flagship plant for our North American operations as a result of your firm's excellent design solution. This project has had a profound effect on management and employees perception of their work environment enhancing the work ethic and ultimately contributing greatly to raise the overall operational standards.

For anyone who is considering employing Grove & Dall'Olio Architects, they should know that your office began collaborating with us developing cost estimates for conceptual designs of about ten buildings at our new plant. Our Construction Management team was so impressed with your firm's abilities, they expanded your role in this project to Architect of Record. GDA recommended combining several buildings in order to reduce construction costs and assisted us in the decision process by providing detailed and timely information.

In all, your firm designed the Main Control Building, the Administration Building, the Warehouse, the Electrical Maintenance Building and Main Entrance Security Building for our Martinsburg Plant. Moreover you did it in a manner that maintained a level of continuity throughout.

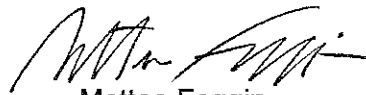
Your ability to collaborate with our diverse team and to maintain an effective level of communication with many and sometimes colliding players has been impressive and key to the successful outcome of the project.

Your attention to detail and creative choice of building materials were both thoughtful and meshed well with the new work environment Italcementi has put in place at the Martinsburg Plant. In particular, I enjoyed working with you directly on the interior furnishings and finishes. Throughout the course of the project, your office met every deadline we placed before you and you were always quick to respond to comments and calls from my office.

I particularly appreciated your ability to couple "green" solutions with our concerns over costs: we all recognize that it takes ingenuity to propose solutions that afterward appear to be common sense.

In meetings with all of the players present, you conducted yourself in a courteous and professional manner and in particular with the general contractor, their subcontractors and their employees. I would strongly recommend your office to anyone seeking architectural and engineering services and that they know that this \$10 million project was handled with ease and precision by your firm.

Best regards,

A handwritten signature in black ink, appearing to read 'Matteo Faggin', with a stylized flourish at the end.

Matteo Faggin  
Project Engineer



State of West Virginia  
Department of Administration  
Purchasing Division  
2019 Washington Street East  
Post Office Box 50130  
Charleston, WV 25305-0130

# Request for Quotation

RFQ NUMBER
DNRB11006

PAGE
2

ADDRESS CORRESPONDENCE TO ATTENTION OF
FRANK WHITTAKER 304-558-2316

RFQ COPY  
TYPE NAME/ADDRESS HERE

DIVISION OF NATURAL RESOURCES  
PARKS & RECREATION SECTION

324 4TH AVENUE  
SOUTH CHARLESTON, WV  
25303-1228 304-558-3397

DATE PRINTED	TERMS OF SALE	SHIP VIA	FOB	FREIGHT TERMS
08/03/2010				

OPENING DATE: 08/31/2010 BID OPENING TIME 01:30PM

LINE	QUANTITY	UOP	CAT. NO.	ITEM NUMBER	UNIT PRICE	AMOUNT
EXHIBIT 10						
REQUISITION NO.: .....						
ADDENDUM ACKNOWLEDGEMENT						
I HEREBY ACKNOWLEDGE RECEIPT OF THE FOLLOWING CHECKED ADDENDUM(S) AND HAVE MADE THE NECESSARY REVISIONS TO MY PROPOSAL, PLANS AND/OR SPECIFICATION, ETC.						
ADDENDUM NO.'S:						
NO. 1 <input checked="" type="checkbox"/>						
NO. 2 .....						
NO. 3 .....						
NO. 4 .....						
NO. 5 .....						
I UNDERSTAND THAT FAILURE TO CONFIRM THE RECEIPT OF THE ADDENDUM(S) MAY BE CAUSE FOR REJECTION OF PROPOASLS.						
VENDOR MUST CLEARLY UNDERSTAND THAT ANY VERBAL REPRESENTATION MADE OR ASSUMED TO BE MADE DURING ANY ORAL DISCUSSION HELD BETWEEN VENDOR'S REPRESENTATIVES AND ANY STATE PERSONNEL IS NOT BINDING. ONLY THE INFORMATION ISSUED IN WRITING AND ADDED TO THE SPECIFICATIONS BY AN OFFICIAL ADDENDUM IS BINDING.						
..... SIGNATURE						

SEE REVERSE SIDE FOR TERMS AND CONDITIONS		
SIGNATURE <i>[Signature]</i>	TELEPHONE 304-267-2120	DATE 8/28/2010
PARTNER	FEIN 55-074-7182	ADDRESS CHANGES TO BE NOTED ABOVE

WHEN RESPONDING TO RFQ, INSERT NAME AND ADDRESS IN SPACE ABOVE LABELED 'VENDOR'



State of West Virginia  
Department of Administration  
Purchasing Division  
2019 Washington Street East  
Post Office Box 50130  
Charleston, WV 25305-0130

# Request for Quotation

RFQ NUMBER
DNRB11006

PAGE
3

ADDRESS CORRESPONDENCE TO ATTENTION OF
FRANK WHITTAKER 304-558-2316

RFQ COPY  
TYPE NAME/ADDRESS HERE

V  
E  
N  
D  
O  
R

S  
H  
I  
P  
T  
O  
DIVISION OF NATURAL RESOURCES  
PARKS & RECREATION SECTION  
324 4TH AVENUE  
SOUTH CHARLESTON, WV  
25303-1228 304-558-3397

DATE PRINTED	TERMS OF SALE	SHIP VIA	F.O.B.	FREIGHT TERMS
08/03/2010				

OPENING DATE:	08/31/2010	BID OPENING TIME	01:30PM
---------------	------------	------------------	---------

LINE	QUANTITY	UOP	CAT. NO.	ITEM NUMBER	UNIT PRICE	AMOUNT
------	----------	-----	----------	-------------	------------	--------

GROVE + DALL'OLIO ARCHITECTS  
COMPANY  
..... 8/28/2010 .....  
DATE

NOTE: THIS ADDENDUM ACKNOWLEDGEMENT SHOULD BE SUBMITTED WITH THE PROPOSAL.

REV. 09/21/2009

BANKRUPTCY: IN THE EVENT THE VENDOR/CONTRACTOR FILES FOR BANKRUPTCY PROTECTION, THE STATE MAY DEEM THE CONTRACT NULL AND VOID, AND TERMINATE SUCH CONTRACT WITHOUT FURTHER ORDER.

## NOTICE

A SIGNED EOI MUST BE SUBMITTED TO:

DEPARTMENT OF ADMINISTRATION  
PURCHASING DIVISION  
BUILDING 15  
2019 WASHINGTON STREET, EAST  
CHARLESTON, WV 25305-0130

THE EOI SHOULD CONTAIN THIS INFORMATION ON THE FACE OF THE ENVELOPE OR THE EOI MAY NOT BE CONSIDERED:

SEALED EOI

SEE REVERSE SIDE FOR TERMS AND CONDITIONS		
ATURE	TELEPHONE	DATE
FEIN	ADDRESS CHANGES TO BE NOTED ABOVE	

WHEN RESPONDING TO RFQ, INSERT NAME AND ADDRESS IN SPACE ABOVE LABELED 'VENDOR'



State of West Virginia  
Department of Administration  
Purchasing Division  
2019 Washington Street East  
Post Office Box 50130  
Charleston, WV 25305-0130

# Request for Quotation

RFQ NUMBER

DNRB11006

PAGE

4

ADDRESS CORRESPONDENCE TO ATTENTION OF

FRANK WHITTAKER  
304-558-2316

RFQ COPY

TYPE NAME/ADDRESS HERE

V  
E  
N  
D  
O  
R

DIVISION OF NATURAL RESOURCES  
PARKS & RECREATION SECTION

324 4TH AVENUE  
SOUTH CHARLESTON, WV  
25303-1228 304-558-3397

S  
H  
I  
P  
T  
O

DATE PRINTED

TERMS OF SALE

SHIP VIA

FOB

FREIGHT TERMS

08/03/2010

OPENING DATE:

08/31/2010

BID OPENING TIME 01:30PM

LINE

QUANTITY

UOP

CAT  
NO

ITEM NUMBER

UNIT PRICE

AMOUNT

BUYER:

44

EOI. NO.:

DNRB11006

BID OPENING DATE:

08/31/2010

EOI OPENING TIME:

1:30 PM

PLEASE PROVIDE A FAX NUMBER IN CASE IT IS NECESSARY  
TO CONTACT YOU REGARDING YOUR PROPOSAL.

304 267-2884

CONTACT PERSON (PLEASE PRINT CLEARLY):

LISA DALLONIO

\*\*\*\*\* THIS IS THE END OF RFQ DNRB11006 \*\*\*\*\* TOTAL:

SEE REVERSE SIDE FOR TERMS AND CONDITIONS

SIGNATURE

TELEPHONE

DATE

FEIN

ADDRESS CHANGES TO BE NOTED ABOVE

WHEN RESPONDING TO RFQ, INSERT NAME AND ADDRESS IN SPACE ABOVE LABELED 'VENDOR'