



March 17, 2011

Purchasing Division
2019 Washington Street, East
Charleston, WV 25305-0130

Re: EOI #DNR211120

Purchasing Division:

CMA Engineering is pleased to submit our Expression of Interest for providing design services, preparing bid documents and providing construction management for the renovation/upgrade to the HVAC, and related systems for the facilities at Hawks Nest State Park and Twin Falls Resort.

CMA has provided engineering services for over 2,500 projects, of varying size and complexity, since its incorporation in 1986. Projects that have involved the design of HVAC systems include the LEED accredited DEP Consolidated Office Building in Charleston, HVAC upgrades at the Boreman Hall Dormitory at West Virginia University and the HVAC system replacement at Nitro High School. Our professionals are educated in the latest technological, industrial and governmental standards and have worked with numerous state and local governmental agencies to complete projects within time and budget scopes.

CMA Engineering will utilize the experience of NVisions Architects and Ham Engineering for any architectural and structural design needed. CMA, NVisions and Ham Engineering have successfully collaborated on numerous projects during the last twenty years. Currently, we are providing design services for the HVAC renovations of the House and Senate Offices in Building #1 at the State Capitol Complex.

Thank you for your consideration. We look forward to meeting with you during the interview process to present a more comprehensive statement of our qualifications

Sincerely,
CMA Engineering

Daniel L. Ellars, P.E.
Principal

RECEIVED

2011 MAR 16 PM 4: 12

WV PURCHASING
DIVISION



State of West Virginia
 Department of Administration
 Purchasing Division
 2019 Washington Street East
 Post Office Box 50130
 Charleston, WV 25305-0130

Request for Quotation

RFQ NUMBER
 DNR211120

PAGE
 4

ADDRESS CORRESPONDENCE TO ATTENTION OF
 FRANK WHITTAKER
 304-558-2316

VENDOR
 RFQ COPY
 TYPE NAME/ADDRESS HERE
 CMA Engineering
 824 Cross Lanes Drive
 Charleston, WV 25313

STATE
 DIVISION OF NATURAL RESOURCES
 PARKS & RECREATION SECTION
 324 4TH AVENUE
 SOUTH CHARLESTON, WV
 25303-1228 304-558-3397

DATE PRINTED	TERMS OF SALE	SHIP VIA	FOB	FREIGHT TERMS
02/09/2011				

BID OPENING DATE: 03/17/2011 BID OPENING TIME 01:30PM

LINE	QUANTITY	UOP	CAT NO	ITEM NUMBER	UNIT PRICE	AMOUNT
				DNR211120		
				03/17/2011		
				1:30 PM		
PLEASE PROVIDE A FAX NUMBER IN CASE IT IS NECESSARY TO CONTACT YOU REGARDING YOUR BID: (304) 343-5146 ----- CONTACT PERSON (PLEASE PRINT CLEARLY): Daniel L. Ellars, P.E. ----- ***** THIS IS THE END OF RFQ DNR211120 ***** TOTAL: _____						

SEE REVERSE SIDE FOR TERMS AND CONDITIONS

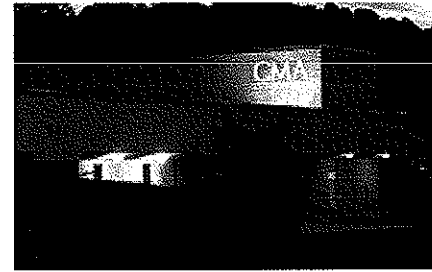
SIGNATURE	TELEPHONE	DATE
TITLE	FEIN	ADDRESS CHANGES TO BE NOTED ABOVE

WHEN RESPONDING TO RFQ, INSERT NAME AND ADDRESS IN SPACE ABOVE LABELED 'VENDOR'

C O R P O R A T E P R O F I L E



Clingenpeel/McBrayer & Associates, Inc.



Services

Clingenpeel/McBrayer & Associates is a West Virginia based small business firm, providing services in the areas of HVAC, plumbing, fire protection and electrical engineering. CMA's founders have long believed in the philosophy that a successful project requires a comprehensive approach. This includes all traditional facets of project planning, starting with master planning, working closely with the client, developing the completed construction documents, bidding the project and contract administration. However, our depth of expertise goes far beyond the traditional services. From developing design criteria for owners to designing the mechanical and electrical systems for the West Virginia DEP Consolidated Office Building, the first LEED certified building in the state, CMA is a proven leader in providing engineering services in the design-build delivery method. As we have been involved in LEED Certification and other "LEED-oriented" ventures for several years, we attempt to incorporate the most efficient and sustainable "green" designs in all of our projects.

History

Since 1986, Clingenpeel/McBrayer & Associates has provided services on numerous projects of varying size and complexity. Clients include architects, industrial companies, governmental agencies, contractors, engineers, developers and private organizations. With offices strategically located in Charleston and Morgantown, our professional staff can provide clients with exceptional hands-on engineering services for planning, meetings, site visits and construction administration without effecting the project's budget.

Commitment

Clingenpeel/McBrayer & Associates' submittal is based on your needs and our experience. Our firm has the experience, service and quality work to create a successful project. We are committing senior design professionals in order to assure you receive top priority. We have extensive experience with projects of this nature. Examples of projects for which we were the Engineer are listed in this proposal.

In 1987, computer aided drafting stations were added to provide the best quality and engineering services for our clients. We are currently operating AutoCad 2009. Our firm is constantly monitoring the latest technology, the cost effects and the end results to the final project.

Present staffing allows CMA to complete work in a timely manner without limiting our ability to perform our ongoing work. The staff of CMA is large enough to handle any size project, yet small enough for direct input and supervision by key personnel.



Clingenpeel/McBrayer & Associates, Inc.

824 Cross Lanes Drive
Charleston, WV 25313
(304) 343-0316 tel
(304) 343-5146 fax

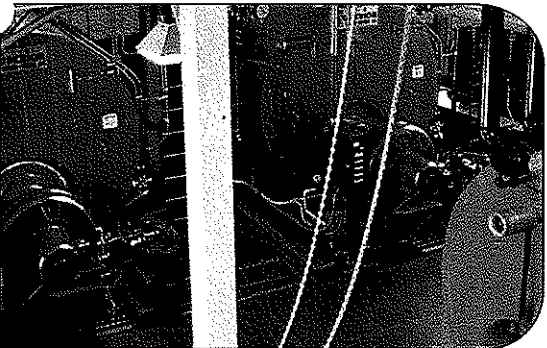
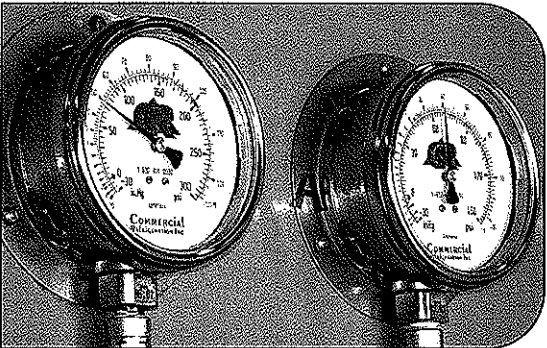
5 Riddle Court
Morgantown, WV 26505
(304) 598-2558 tel
(304) 598-2472 fax

w w w . c m a w v . c o m

M E C H A N I C A L

CMA Engineering experience includes:

- Constant Volume Air Handling Systems
- Variable Volume Air Handling Systems
- Demand Control Ventilation Systems
- Natatorium Dehumidification Systems
- Building Energy and Management Control Systems
- Industrial Ventilation and Exhaust Systems
- Steam and Condensate Systems
- Cooling Plants and Distribution
- Heating Plants and Distribution
- Energy Recovery Systems
- Water Source Heat Pump Systems
- Low, Medium and High Pressure Air Distribution Systems
- Direct Digital, Pneumatic and Hybrid Control Systems
- Kitchen Ventilation and Exhaust Systems



(top) Ruby Memorial Hospital Morgantown, WV
HVAC Exhaust System

(middle) Memorial Ice Rink South Charleston, WV
Refrigerant Pressure Gages

(bottom) Alderson Federal Correctional Facility Alderson, WV
Steam Plant



Clingenpeel/McBrayer & Associates, Inc.

824 Cross Lanes Drive
Charleston, West Virginia 25313
(304) 343-0316 tel
(304) 343-5146 fax

5 Riddle Court
Morgantown, West Virginia 26505
(304) 598-2558 tel
(304) 598-2472 fax

www.cma.wv.com

E L E C T R I C A L

CMA Engineering experience includes:

Underground Ducts and Utility Structures

Intrusion Detection

Closed Circuit Television

Cable and Master Antenna Television

Medium Voltage Distribution and Substations

Secondary Voltage Distribution

Engine Generators and Battery Inverters

Transient Voltage Suppression

Interior Lighting

Exterior Lighting

Sports Lighting

Theatrical Lighting

Lighting Control

Uninterruptible Power Supply Systems

Lightning Protection

Intercommunications Systems

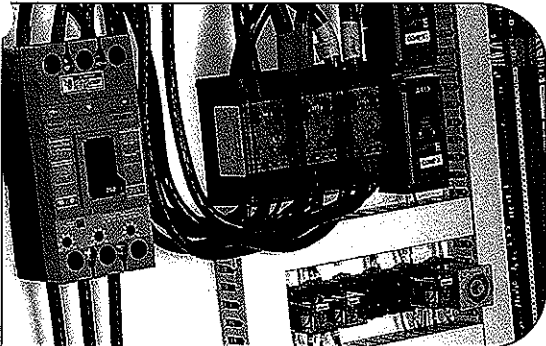
Nurse Call

Voice and Data Systems

Fire Detection Systems



(above) Split Rock Pools Snowshoe, WV
Indirect Lighting System



(below) Memorial Ice Rink South Charleston, WV
Chiller Power and Control Panel

CMA
ENGINEERING

Clingenpeel/McBrayer & Associates, Inc.

824 Cross Lanes Drive
Charleston, West Virginia 25313
(304) 343-0316 tel
(304) 343-5146 fax

5 Riddle Court
Morgantown, West Virginia 26505
(304) 598-2558 tel
(304) 598-2472 fax

www.cma.wv.com

PLUMBING & PIPING

CMA Engineering experience includes:

Sanitary Sewer Systems

Storm Sewer Systems

Natural Gas Distribution

LP Gas Distribution

Fuel-Oil Distribution

Compressed Air Systems

Vacuum Systems

Chemical Waste Systems

Process Water Systems

Deionized Water Systems

Domestic Water Systems

Helium Distribution Systems

Domestic Water Pumping Systems

Sewage Pumping Systems

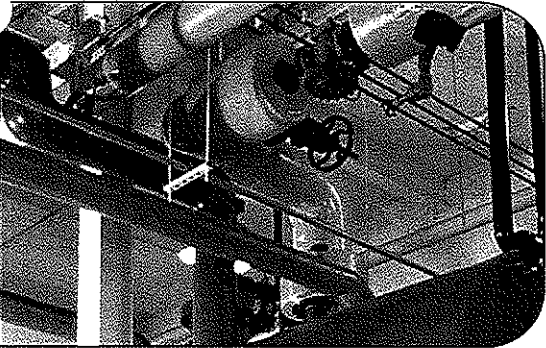
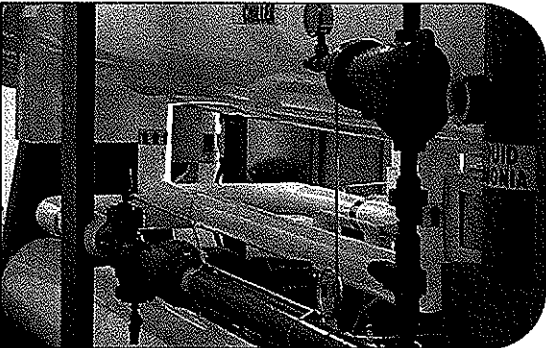
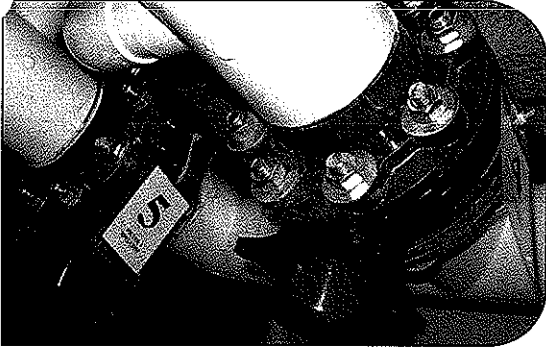
Water Heating

Automatic Fire Sprinkler Systems

Standpipe Systems

Fire Pumps, Storage Tanks, Service Mains

Medical Gas Systems



(top) Split Rock Pools Snowshoe, WV
Piping & Pump Room

(middle) Memorial Ice Rink South Charleston, WV
Piping & Chilling

(bottom) Alderson Federal Correctional Facility Alderson, WV
Steam Piping

CMA
ENGINEERING

Clingenpeel/McBrayer & Associates, Inc.

824 Cross Lanes Drive
Charleston, West Virginia 25313
(304) 343-0316 tel
(304) 343-5146 fax

5 Riddle Court
Morgantown, West Virginia 26505
(304) 598-2558 tel
(304) 598-2472 fax

www.cma.wv.com

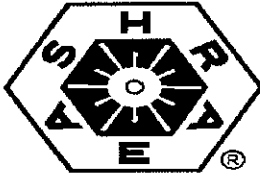
Professional Affiliations



Leadership in Energy &
Environmental Design
(LEED)



U.S. Green Building
Council
(USGBC)



American Society of
Heating, Refrigerating and
Air Conditioning Engineers,
Inc.,
(ASHRAE)



American Institute of
Architects— WV Chapter
Affiliate Member
(WVAIA)



National Fire
Protection Association
(NFPA)

ASPE

American Society Of
Plumbing Engineers
(ASPE)



MasterSpec
Specifications
(ARCOM)



ILLUMINATING
Engineering Society
The
LIGHTING
AUTHORITY (IES)



WV Society of
Healthcare Engineers
(WVSHE)



Business Partner

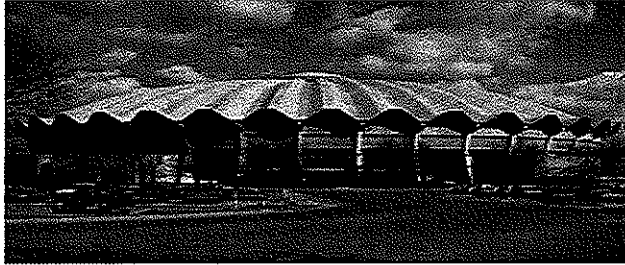


International Code Council (ICC)

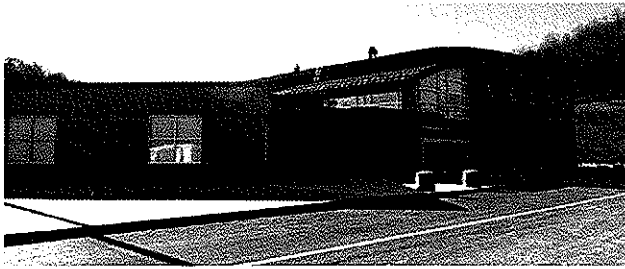
CMA
ENGINEERING

References

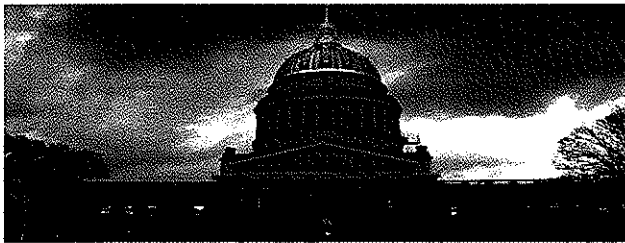
Mechanical/Electrical/Plumbing



West Virginia University
P.O. Box 0877
Morgantown, WV 26505
Contact: Mr. John Thompson
(304) 293-3625



Kanawha County Schools
3300 Pennsylvania Avenue
Charleston, WV 25302
Contact: Mr. Charles Wilson
(304) 348-6148



State of West Virginia
1900 Kanawha Blvd, East
Bldg. 1, Room MB-60
Charleston, WV 25305
Contact: Mr. Robert Kilpatrick
(304)558-0250



Mylan Pharmaceuticals, Inc.
P.O. Box 4310
Morgantown, WV 26504
Contact: Mr. J. J. Dotson
(304) 599-2595

Organizational Chart

State of West Virginia
Department of Natural Resources

CMA Engineering
Prime Consultant

Daniel Ellars, P.E.
Project Manager

Mechanical

Timothy Cox, PE
Matthew Corathers

Electrical

Daniel Ellars, PE
James Kerns

Plumbing

Timothy Cox, P.E.
Larry A. Weese

N Visions Architects

George Soltis, AIA
James King, AIA

**Ham Engineering
Structural**

Judson Ham, PE

P R O F I L E

Timothy Cox, P.E., NCEES
President
Mechanical Engineer

(304) 598-2558
tcox@cmawv.com

EDUCATION

University of Colorado
Boulder, Colorado
Degree: Mechanical Engineering B.S.

REGISTRATIONS/PROFESSIONAL AFFILIATIONS

Association of Energy Engineers-CBCP

Registered Professional Engineer in WV, VA, KY

CPD (Certified in Plumbing Engineering)

Member of ASHRAE

American Society of Plumbing Engineers

National Association of Fire Protection Engineers

WV Society of Healthcare Engineers

EXPERIENCE

Mr. Timothy Cox, President and Senior Mechanical Engineer of CMA Engineering brings 24 years of mechanical design experience to our clients. Mr. Cox has been project manager and project engineer for a variety of projects.

PROJECTS

West Virginia University

Open End Contract since 1999
Mountain Lair Plaza Renovations
Boreman HVAC/Plumbing/Fire Sprinkler Upgrades
Soccer Stadium
Coliseum Life/Safety Renovations
Coliseum Locker Room Suites
Engineering Science Building Addition/Renovations
Arnold Hall Fire Alarm/ Fire Sprinkler Upgrades
Wrestling Training Facility

West Virginia University Hospitals

WV Eye Institute-MEP systems design for new facility
Cheat Clinic-MEP design for new clinical addition
WVUH Emergency Department-HVAC, electrical, fire and communication systems design for new addition
Chestnut Ridge Hospital-various MEP renovations
Healthworks Rehab and Fitness -MEP systems design for new facility

Mylan Pharmaceuticals, Morgantown, WV

Various projects including HVAC, plumbing, fire sprinkler and controls for new office building, fluid bed addition, north plant expansion, parking garage and weighing and packaging.

CMA
ENGINEERING

Clingenpeel/McBrayer & Associates, Inc.

824 Cross Lanes Drive
Charleston, WV 25313
(304) 343-0316 tel
(304) 343-5146 fax

5 Riddle Court
Morgantown, WV 26505
(304) 598-2558 tel
(304) 598-2472

w w w . c m a w v . c o m

P R O F I L E

Daniel Lee Ellars, P.E.
LEED AP

Principal
(304) 343-0316
dellars@cmawv.com

EDUCATION

West Virginia University Institute of Technology
Montgomery, West Virginia.
Bachelors of Science in Electrical Engineering

West Virginia State University
Institute, West Virginia
Bachelors of Science in Business Administration

REGISTRATIONS/PROFESSIONAL AFFILIATIONS

Registered Professional Engineer in West Virginia

National Fire Protection Association (NFPA)

Institute of Electrical and Electronics Engineers (IEEE)

American Society of Heating, Refrigerating and Air-
Conditioning Engineers (ASHRAE)

EXPERIENCE

Mr. Daniel L. Ellars, Electrical Engineer for Clingenpeel/
McBrayer & Associates, Inc. brings 19 years of
electrical design experience to our clients. Mr. Ellars
has been a project manager and project engineer for a
variety of projects including commercial and industrial
facilities as well as for both power and
tele-communications utilities.

PROJECTS

Educational Experience

Jackson County (WV) Schools—Electrical
Upgrades & Expansions
Talcott Elementary School—Electrical Design
Fairdale Elementary School—Electrical Design

Hospital Experience

West Virginia University / Ruby Memorial Hospital
West Virginia Eye Institute—Electrical systems
design for new facility.
Thomas Memorial Hospital—Electrical systems
survey, upgrades and documentation.
Standby emergency power engine
generator replacement.

Military Experience

West Virginia Army National Guard
Eleanor (WV) Maintenance Center—Electrical
systems design for new facility.
Elkins Readiness Center—Electrical systems design
or new facility

Industrial Experience

Mylan Pharmaceuticals
Mylan Office & Lab Buildings—various electrical
systems designs for new, existing and expanded
facilities including new 23kV/12kV switchyard
and grounding plain layout.

CMA
ENGINEERING

Clingenpeel/McBrayer & Associates, Inc.

824 Cross Lanes Drive
Charleston, WV 25313
(304) 343-0316 tel
(304) 343-5146 fax

5 Riddle Court
Morgantown, WV 265
(304) 598-2558 tel
(304) 598-2472

w w w . c m a w v . c o m

P R O F I L E

James A. Kerns Mechanical/Electrical Designer

(304) 343-0316
jakerns@cmawv.com

EDUCATION

West Virginia State College
Institute, West Virginia
Degree: Bachelor of Science in Industrial
Technology/Building Construction

REGISTRATIONS/PROFESSIONAL AFFILIATIONS

Member of ASHRAE

EXPERIENCE

Mr. James A. Kerns has over 32 years experience in Mechanical and Electrical engineering design. He has been responsible for design projects in the educational, commercial, and health care fields.

Mr. Kerns has been a great asset to Clingenpeel/McBrayer & Associates. His knowledge and experience enables him to complete project designs in a clear and concise manner and in a timely fashion.

PROJECTS

Kanawha County Schools

George Washington High School-HVAC Renovations
George Washington High School-Classroom Additions
Horace Mann Middle School-HVAC Renovations
Elkview Middle School-Classroom Additions
Elkview Middle School-Fire Alarm System
Ruffner Elementary School-Classroom Additions
Point Harmony Elementary School-Activity Building

Concord College

Athens, West Virginia — various renovation projects throughout the campus, which include Twin Towers Fire Alarm, Twin Towers Elevator Renovation, Alexander Arts Center Chiller Replacement and new Chapel

U.S. Postal Service

Open End Contract Since 1993, which encompasses numerous Post Office Renovations, new Post Offices, and new Postal Maintenance Facilities. Mr. Kerns has been Project Manager for over 65 projects for the U.S. Postal Service.

Yeager Airport

New Parking Garages
New Emergency Generator



Clingenpeel/McBrayer & Associates, Inc.

824 Cross Lanes Drive
Charleston, WV 25313
(304) 343-0316 tel
(304) 343-5146 fax

5 Riddle Court
Morgantown, WV 26505
(304) 598-2558 tel
(304) 598-2472

www.cmawv.com

P R O F I L E

Matt Corathers, E.I. Mechanical Designer

(304) 598-2558
mcorathers@cma.wv.com

EDUCATION

West Virginia University
Bachelor of Science -Mechanical Engineering

PROJECTS

West Virginia University
Mechanical design for new two-story
child care facility

University High School, Morgantown, WV
Mechanical design for renovations/
upgrades to the HVAC systems

Randolph County Building
Mechanical design for completion of two
story addition and modifications of the
existing second floor to be used by the
Family Court

Monongalia County Family Court
Mechanical design for renovations to
4,850sf in existing court facility

Veterans Hospital, Clarksburg, WV
Mechanical design for renovations to
Dental Lab

Monongalia General Hospital
Evaluation of kitchen gas systems
Mechanical design for renovations to
IT workroom cooling

PROFESSIONAL DEVELOPMENT

Successfully passed Fundamentals of Engineering
Exam

EXPERIENCE

Matt is a recent addition to CMA Engineering
having previously worked for Whitman, Requardt
and Associates in Baltimore, MD.



Clingenpeel/McBrayer & Associates, Inc.

824 Cross Lanes Drive
Charleston, WV 25313
(304) 343-0316 tel
(304) 343-5146 fax

5 Riddle Court
Morgantown, WV 26505
(304) 598-2558 tel
(304) 598-2472

w w w . c m a w v . c o m

P R O F I L E

Larry Weese Mechanical/Plumbing Designer

(304) 343-0316
lweese@cmawv.com

EDUCATION

West Virginia University
Morgantown, West Virginia
Degree: Division of Forestry BS,MS

PROJECTS

Medical Facilities Experience

Charleston Area Medical Center

Women & Children's Hospital- Renovations to
Emergency Room

Hess Medical Office Building-New Facility

Pinewood Medical Office Building-Renovations

Southern West Virginia Hospice-New Facility

NorthGate Doctor's Office Building-New Facility

WV Department of Health and Human Resources

Office of Chief Medical Examiner, Charleston
New Facility Mingo County

Emergency Response Facilities

Randolph County 911-New Facility

Mason County 911-New Facility

Raleigh County 911-New Facility

Orchard Manor Fire Station-New Facility

Industrial Experience

Standard Laboratories-Laboratory Addition

Dow Process Control-New Facility

Diamond Electric-Expansion

Commercial Experience

Bobcat of Advantage Valley-New Facility

Allegheny Springs Restaurant

PROFESSIONAL DEVELOPMENT

Various seminars and technical sessions

EXPERIENCE

Mr. Larry Weese, Mechanical Designer for
Clingenpeel/McBrayer & Associates, Inc. brings
18 years of mechanical design and project
management experience to our clients.



Clingenpeel/McBrayer & Associates, Inc.

824 Cross Lanes Drive
Charleston, WV 25313
(304) 343-0316 tel
(304) 343-5146 fax

5 Riddle Court
Morgantown, WV 26505
(304) 598-2558 tel
(304) 598-2472

w w w . c m a w v . c o m



GEORGE M. SOLTIS, AIA, NCARB
Principal/ President

Academic Experience

Bachelor of Architecture with Distinction
University of Kentucky – 1977
Conservation USA – 2007

Registration

NCARB No. 55,660
Active: West Virginia, Ohio, Virginia, Kentucky
Inactive: Tennessee

Professional Associations

AIA/WV West Virginia
AIA American Institute of Architects

Civic Organizations

Boy Scouts of America,
Committee Member,
South Charleston
Boy Scouts of America, Order of the Arrow,
Central Region C4B,
Associate Advisor
Health Appeals Board,
City of South Charleston

Responsibility

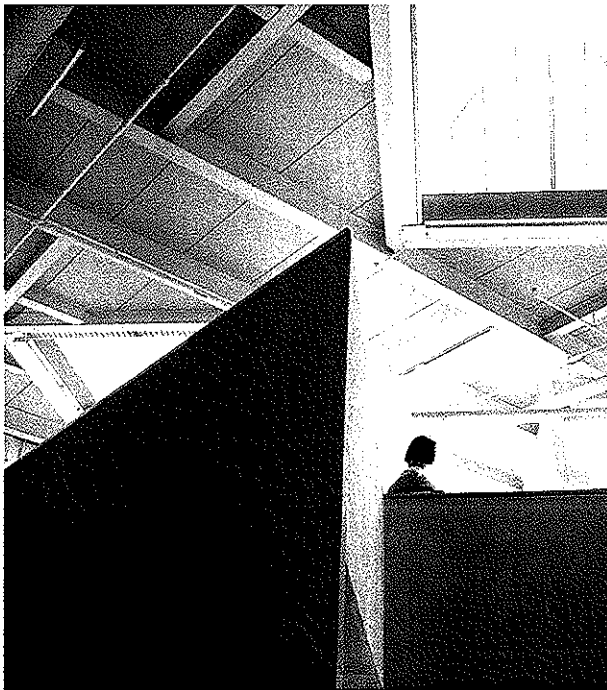
Principal-in-Charge, Administration/Design
Principal and Owner of N Visions

Project Experience

Educational

New Sissonville Middle School
Herbert Hoover High School
Addition/Renovations
Sissonville Branch, Kanawha County Library
George Washington High School
Addition/Renovations
South Charleston High School
Additions/Renovations
Elkview Middle School Additions/Renovations
South Charleston Public Library
Addition/Renovation
Kanawha County Schools Football Fields
Bleachers and Renovations





Commercial

Ream Interests Office Building
Tri-State Racetrack & Gaming Center
Summers Square Office Building –
One Kenton Drive/Northgate Office Building
Capitol City Building/Renovation/Restoration

Health Care –

Over 25 years Health Care Experience

IRC Rehabilitation Clinic – South Charleston, WV
Stickler Medical Office Building – Charleston, WV
St. Mary's Hospital – Huntington, WV
Montgomery General Hospital – Montgomery, WV
St. Joseph's Hospital – Buchannon, WV

Public/Government

New United States Postal Facilities—
Hurricane, WV
Martinsburg, WV
Bluefield, WV
Princeton, WV
Beckley, WV

Historic Architecture

Historic Architect,
Meeting NPS 36CFR61.9 WV

Restoration of West Virginia
Governor's Mansion Porch
Criel Mound Park Master Plan
Restoration/Renovation of
Criel Mound
Locomotive Shelter,
Chief Logan State Park
Gates Building, Charleston, WV
Renaissance Tower, Charleston, WV
USPS Point Pleasant, WV
USPS Bluefield, WV



A · R · C · H · I · T · E · C · T · S



**JAMES R. KING, AIA, NCARB, LEED AP
Architect**

Academic Experience

Masters of Architecture/1991/Virginia Polytechnic
Institute and State University, Blacksburg, VA
B.S./Business Administration/Computer
Science/1987/Marshall University, Huntington, WV

Registration

N.C.A.R.B. No. 48310
Active: West Virginia, Maryland, Massachusetts,
Ohio, Rhode Island

Professional Affiliations

AIA/WV

Responsibility

Design and Contract Administration

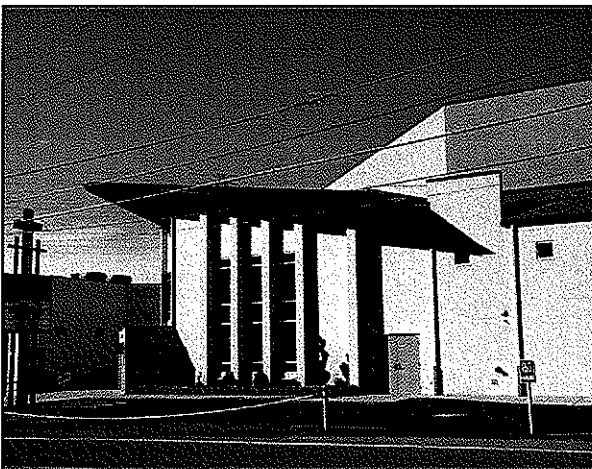
Educational

Conley Hall Study, West Virginia University
Institute of Technology
Campus Master Plan, West Virginia University
Institute of Technology
New Diesel Technology Building,
Community and Technical College at WVU
Institute of Technology –



Commercial

Motion Masters Film and Video Production –
Charleston, WV
Animal Care Associates –Charleston, WV
Upper Kanawha Valley Technology Center –
Montgomery, WV

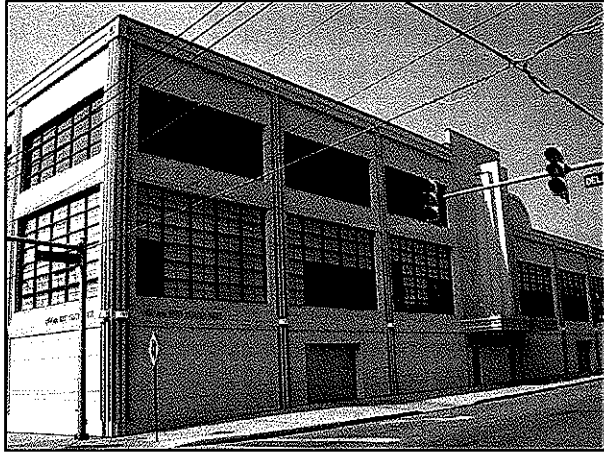


Public/Government

United States Post Office – Martinsburg, WV
Montgomery Streetscape Preliminary Study –
Montgomery, WV
McDowell County Courthouse – Welch, WV

Historic Architect

Historic Architect meeting NPS 36CFR61.9 WV
Historic Residential Properties –
Charleston, WV



Housing

YWCA Senior Housing – Charleston, WV
Oakfield Apartments, Fairfield Properties –
Bethesda, MD
Springfield Apartment Clubhouse Renovations –
Fairfield Properties, Cranston, RI
Colonial Village Apartments Egress Stair
Renovations
Fairfield Properties – Plainville, MA
University Heights Clubhouse, Fairfield Properties
Providence, RI
Various Projects, Carmel Properties –
Washington, DC
Calwell Law Office – Charleston, WV



Churches

Christ Church United Methodist –
Charleston, WV
Maranatha Fellowship – St. Albans, WV
Covenant House – Charleston, WV
Family Worship Center – Chesapeake, WV

Ham Engineering
Structural Engineering
South Charleston, WV

Judson C. Ham, Jr., PE
President/Principal Engineer

Education

West Virginia University of Technology
Bachelor of Science in Civil Engineering-May, 1974

West Virginia College of Graduate Studies
Master of Science in Engineering-December, 1978

Registered Professional Engineer

West Virginia
Ohio
Pennsylvania
Tennessee
Georgia
North Carolina
Virginia

Professional Affiliations

American Society of Civil Engineers
American Concrete Institute
The Masonry Society
Structural Engineering Institute

Professional Experience

Mr. Ham has over thirty years experience in the practice of structural engineering and is currently the {President and Principal Engineer of Ham Engineering, an engineering firm specializing in providing consulting structural engineering, drafting, inspection and evaluation of commercial, industrial and residential projects for architects, contractors and corporations in the West Virginia region. Previously, as Civil/Structural Department Manager , he was responsible for all civil and structural engineering, design and drafting done by a major international engineering firm servicing the West Virginia, Ohio and Kentucky region. Also, he has extensive experience with plant engineering for major manufacturers and local structural steel fabrication companies.

**West Virginia State Capitol-
House and Senate Offices HVAC Renovations
Charleston, WV**



Project Description: CMA Engineering is currently providing mechanical and electrical engineering design services for renovations to the first and second floors' HVAC system and third floor HVAC Penthouses at Building #1 that serve the House and Senate area.

Construction Cost: Construction cost \$8,601,971.00

Project Size: 96,836 square feet

Name of Owner: State of West Virginia
Owner Contact Robert Krause
1900 Kanawha Blvd, East
Building 1
Charleston, WV 25305
(304) 558-9018

Additional Information: CMA Engineering is acting as Prime Consultant on this project. Sub-consultants are N-Visions, Architects and Ham Engineering, Structural Engineer. Preserving the historic integrity of this facility is a priority in the design of the HVAC system and electrical renovations. Construction will be phased as not to interfere with the working of the House and Senate. Estimated completion date 2013.

**Milan Puskar Center HVAC Renovations Phase I and Phase II
West Virginia University
Morgantown, WV**



Project Description: In Phase I, CMA Engineering provided design of new HVAC system serving locker room, showers and meeting rooms as existing systems did not have adequate ventilation or temperature control or meet required code. Project also included design for renovations to the electrical, plumbing and fire protection systems.

In Phase II, CMA provided design of new HVAC, plumbing, electrical and fire protection systems to suit required code modifications and provide better temperature control for weight training rooms and adjacent space. The design also changed out all existing electrical heating coils and provided new boiler and heating water loop, as well as, an air conditioning system for weight training spaces.

Construction Cost: Phase I- \$804,000.00
Phase II- \$1,460,000.00

Project Size: Phase I- 22,500 square feet
Phase II- 27,000 square feet

Name of Owner: West Virginia University
Owner Contact: Paul Whiteman
979 Rawley Lane
Morgantown, WV 26506
(304) 293-8143

Additional Information: CMA Engineering acted as prime consultant on this project using Allegheny Design for Structural engineering on Phase I and Ham Engineering for structural engineering on Phase II. Construction for Phase I was completed in 2007. Construction for Phase II was completed in 2008.

CMA
ENGINEERING

**Nitro High School
Nitro, WV**



Project Description: CMA provided Mechanical and Electrical design services for new HVAC system which replaced a hot water boiler system with gas heated, electric cooled roof top units.

Construction Cost: MEP Construction Cost \$1,164,000.00

Project Size: 108,930 square feet

Name of Owner: Kanawha County Schools
Owner Contact; Charles Wilson
3300 Pennsylvania Avenue
Charleston, WV 25302
(304) 348-6120

Additional Information: CMA acted as sub-consultant on the this project to the Prime Consultant N-Visions Architects. Project completed in 2005.

**Dunbar Middle School
Dunbar, WV**



Project Description: CMA provided Mechanical and Electrical design services for the renovation to the HVAC system.

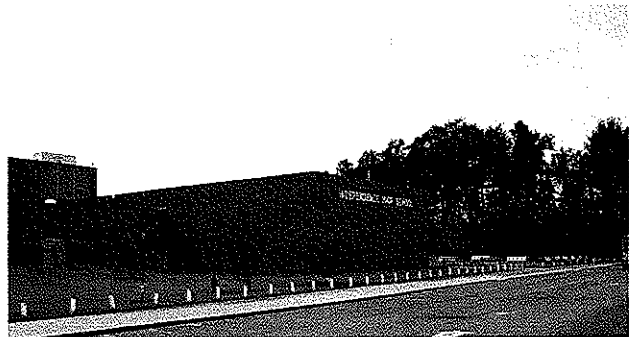
Construction Cost: MEP Construction Cost \$311,755.00

Project Size: 26,879 square feet

Name of Owner: Kanawha County Schools
Owner Contact; Charles Wilson
3300 Pennsylvania Avenue
Charleston, WV 25302
(304) 348-6120

Additional Information: CMA acted as Prime Consultant on this project. Project completed in 2004.

**Independence High School
Sophia, WV**



Project Description: CMA provided Mechanical and Electrical design services for the renovation to the HVAC system.

Construction Cost: MEP Construction Cost \$1,135,000.00

Project Size: 72,093 square feet

Name of Owner: Raleigh County Schools
Owner Contact: Racine Thompson
105 Adair Street
Beckley, WV 25801
(304) 256-4500

Additional Information: CMA Engineering acted as Prime Consultant on his project. Projected Completed in 2006.

**Liberty High School
Glen Daniel, WV**



Project Description: CMA provided Mechanical and Electrical design services for the renovation to the HVAC system.

Construction Cost: MEP Construction Cost \$1,136,798.00

Project Size: 82,640 square feet

Name of Owner: Raleigh County Schools
Owner Contact: Racine Thompson
105 Adair Street
Beckley, WV 25801
(304) 256-4500

Additional Information: CMA Engineering acted as Prime Consultant on this project. Project completed in 2006.

Project Profiles

Lodging



Snowshoe Mountain Resort

CMA Engineering provided design for HVAC, electrical, plumbing, fire alarm and fire sprinkler systems for new Allegheny Springs Lodge. CMA also provided engineering services for the fit-out of such restaurants as the Foxfire Grille, Junction Restaurant and Village Bistro located at the Village in Snowshoe.



Chief Logan State Park

CMA Engineering provided mechanical, electrical, plumbing and fire protection design services for the new lodge and the new conference center.



Fairfield Inn, Morgantown, WV

CMA Engineering provided HVAC, fire sprinkler, fire alarm, plumbing, electrical lighting/power and communications design for new 95 room facility of approximately 50,000sf with a 10,000sf open 3 commons area.



Jefferson Place, Charleston, WV

CMA Engineering provided mechanical, electrical, plumbing and fire protection design services for new medical apartment complex consisting of 24 units of one, two and three bedroom apartments.

Project Profiles

Lodging



Silver Tree Suites, Deep Creek, MD

CMA provided mechanical, electrical, plumbing, fire protection and fire detection design services for new 30,000sf residential complex consisting of four floors.



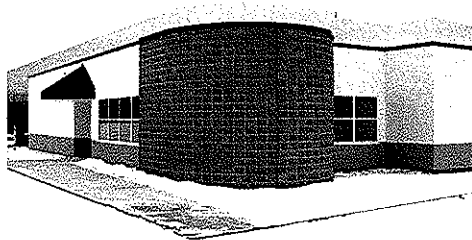
Camp 4, Snowshoe, WV

CMA Engineering provided mechanical, electrical, plumbing and fire protection design services for townhouse complex consisting of four buildings with four 1,600sf units per building.



Residence Halls-University of Charleston

CMA Engineering provided mechanical, electrical, plumbing and fire protection design services for the design/build of two new four-story Dormitories, Constructed during the summers of 2004 and 2005. In 2005 CMA provided design for the addition of a wing to the second dormitory, constructed in the summer of 2006.

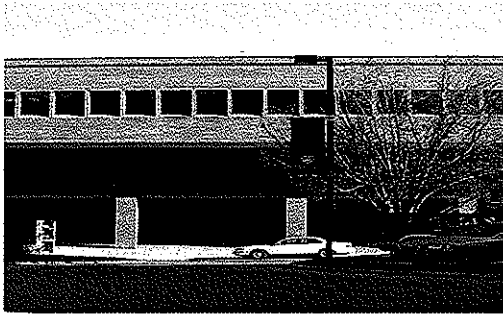


Greenbank NRAO Visitors Dormitory

CMA Engineering provided mechanical, electrical, plumbing and fire sprinkler design services for the new visitors dormitory at Greenbank.

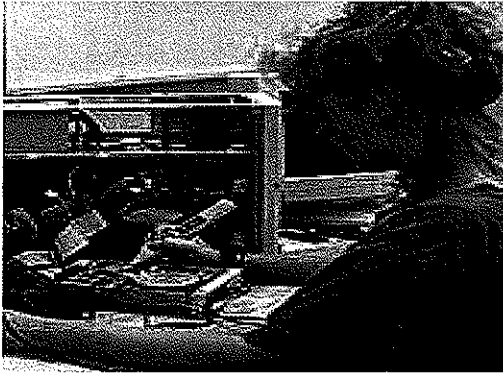
Project Profiles

Renovations



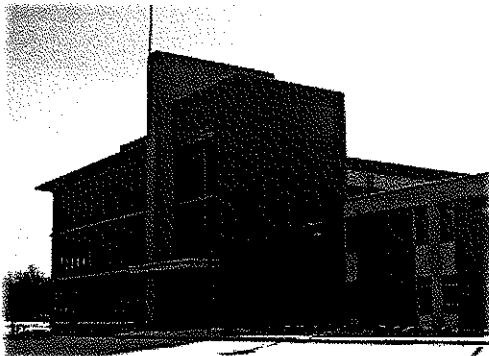
Robert C. Byrd Health Science Center, Charleston, WV

CMA provided design services for separation of the two pipe system into a four pipe, hot water/chilled water system including new pumps, pipes, controls and modifications to the existing motor control center. Project also included the replacement of the motors and providing VFD's for the main air handlers, replacement of VAV boxes, the addition of hot water reheat coils in VAV boxes, replacement of light fixture air diffusers with louver face diffusers and controls for new equipment.



Wyoming County Career & Technical Center

CMA Engineering provided mechanical and electrical engineering services for the renovation of the HVAC System which included replacement of the roof top units and installation of infrared radiant heaters in Buildings B, C and D.



West Virginia University-Parkersburg

CMA Engineering provided mechanical and electrical design services for renovations to the ventilation system of the aluminum welding exhaust systems, serving ten stations in the welding technology complex.

Project Profiles



Coliseum, West Virginia University

CMA provided mechanical and electrical design services for renovations to the HVAC system serving the court level and the construction of two new club level spaces, renovations to the restrooms, concession area and walkway.



Engineering Science Building , WVU

CMA Engineering provided design of new HVAC, plumbing, electrical, fire protection systems within existing space to provide three distinct clean room space (4,500sf) for WVU Engineering Department for conducting experiments on new technology. Project also included design of 2,000sf new mechanical roof top penthouse.



Orndorff Hall, WVU Institute of Technology

CMA provided mechanical, electrical and plumbing engineering services for the upgrade of the HVAC system at Orndorff Hall in Montgomery, WV.

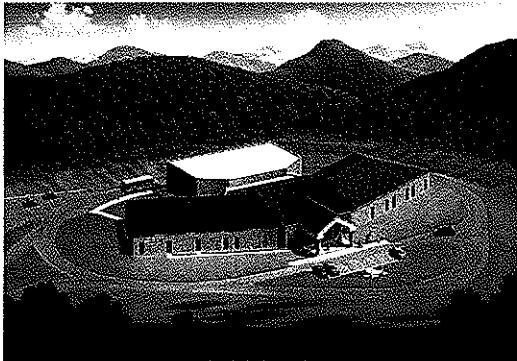
Project Profiles

New Construction



Sissonville Middle School, Kanawha County

CMA Engineering provided mechanical, electrical, plumbing, sprinkler, and data/communication/alarm/control engineering design services for the new, approximately 80,000sf facility, consisting of administrative areas, commons, auditorium, media/technology, sixth, seventh and eighth grade educational areas, laboratories, special education, food services and physical education areas. CMA is currently providing design for the addition of the fifth grade wing.



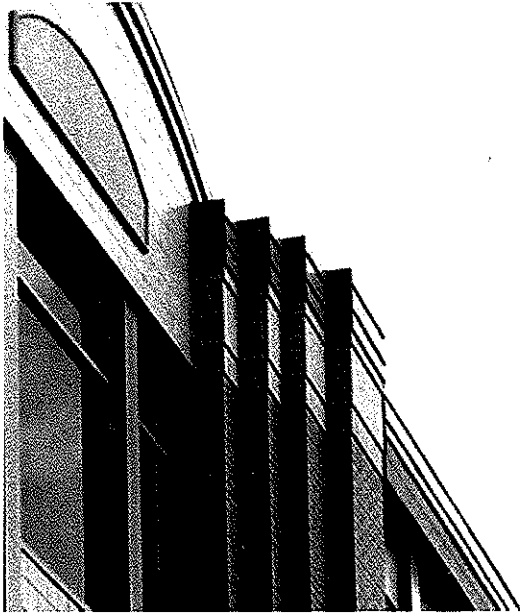
Talcott Elementary School, Summers County

CMA Engineering provided construction documents for HVAC, plumbing, fire sprinkler, fire alarm, communication, lighting and electrical power systems for new 26,000sf elementary school, consisting of administration areas, pre-kindergarten to fifth grade classrooms, special education, art/music, multi-purpose, dining kitchen and toilet rooms.



Pikeview Middle School, Mercer County

CMA Engineering provided design of HVAC, plumbing, fire alarm, fire sprinkler, electrical, lighting, communications, audio/visual and CCTV systems for new 75,000sf middle school comprised of a main wing with offices and gymnasium and a three-story classroom wing.



N Visions has designed and administered the construction of over 200 million dollars of projects in West Virginia since 1985.

N Visions has experience in a wide range of architectural projects including educational, institutional, healthcare, housing, public and private facilities for developers and non-profits, historic preservation, and residential properties.

Design is the heart of a successful project. It is important to provide the proper aesthetics, functional relationships, space planning, and to be a good neighbor in the community and meet the project budget. N Visions will make certain that your project is successful for both the owner and the community.



A · R · C · H · I · T · E · C · T · S

FACILITIES PLANNING AND PROGRAMMING

Determining the actual needs of the client and how to adapt them to the available environment is essential for a successful project. N Visions will assist in defining the needs and desires of the client/user prior to the design of the project.

SITE EVALUATION

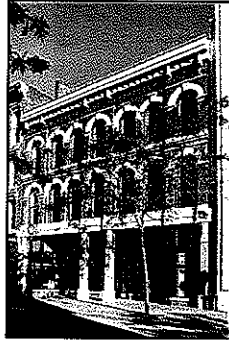
N Visions Architects can provide studies of potential project sites for evaluation by the Owner. Geotechnical, utility, environmental, and property utilization will be evaluated, to allow the Owner to make a site selection decision.

EXISTING FACILITIES EVALUATION

Use of existing facilities requires an educated understanding of potential opportunities and risks that may be encountered. N Visions will assist the Owner in determining how to best enhance the use and reduce the risks to reach a solution.

CODE COMPLIANCE

The State Fire Marshal, School Building Authority, U.S. Army Corps of Engineers, State Historic Preservation Office, and other agencies have specific requirements that must be addressed in all building projects. N Visions has worked with these agencies, and others, on numerous projects, and is familiar with their personnel and regulations. N Visions has a positive working relationship with these agencies, and in many cases involves them early in the design process, which translates into benefits to the Owner.



WVSA Awards

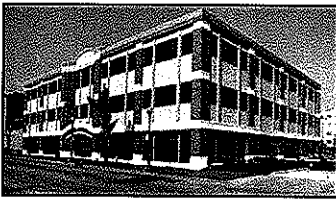
- Trans Allegheny Books, Charleston, WV

WVSA - Honorable Mention

- McCabe-Henley Properties, Inc.
Charleston, WV

**Charleston Renaissance Corporation
Best Development**

- Capitol City Building, Charleston, WV
- Trans Allegheny Books, Charleston, WV
- 200 Hale Street, Charleston, WV
- The Gates Building, Charleston, WV
- 210 Hale Street, Charleston, WV



**WV Home Building Association
Best Multi-Family Developer**

- Governor's Court Apartments,
Charleston, WV
- Woodbridge Condominiums,
Teays Valley, WV



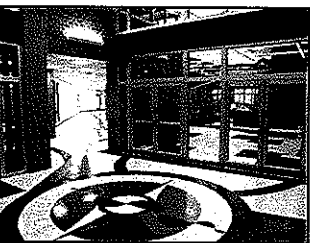
**City of Charleston
Distinguished Design Development**

- Summers Square, Charleston, WV



HUD – Project of the Year 2000

- YWCA Transitional Housing
Charleston, WV



**Associate Builders and Contractors, Inc.
2005 Excellence in Construction**

- YWCA Senior Housing
Charleston, WV

**AIA West Virginia 2008 Craftsmanship
Award for Excellence in Craftsmanship**

- Sissonville Middle School

REFERENCES

Chuck Wilson, Kanawha County Board of Education
3300 Pennsylvania Avenue, Charleston, WV 25302, 304-348-6148

New Sissonville Middle School, Sissonville, WV
South Charleston Middle School Elevator, Windows, Toilet Renovation
Montrose Elementary HVAC and Window Replacement
Nitro High School HVAC and Toilets Renovation
Herbert Hoover High School Addition and Renovation
Elkview Middle School Addition and Renovation
South Charleston High School Addition and Renovation
George Washington High School Addition and Renovation
Auxiliary Gyms – Four County high schools
Piedmont Elementary Addition and Renovation

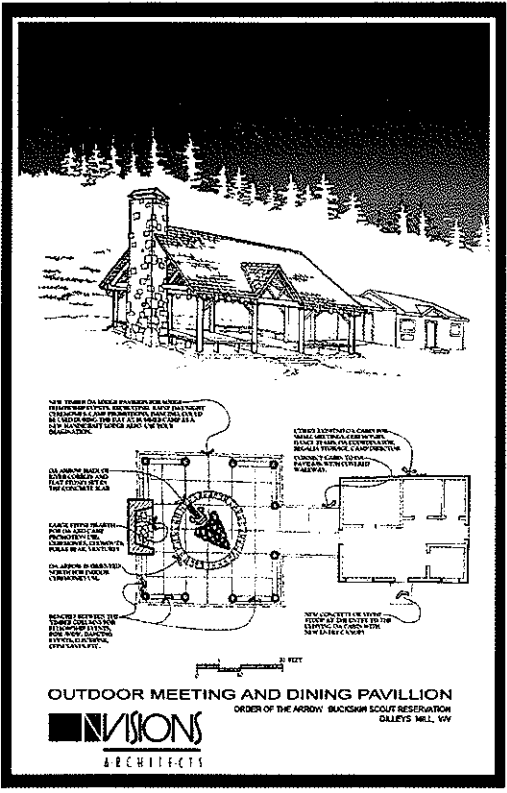
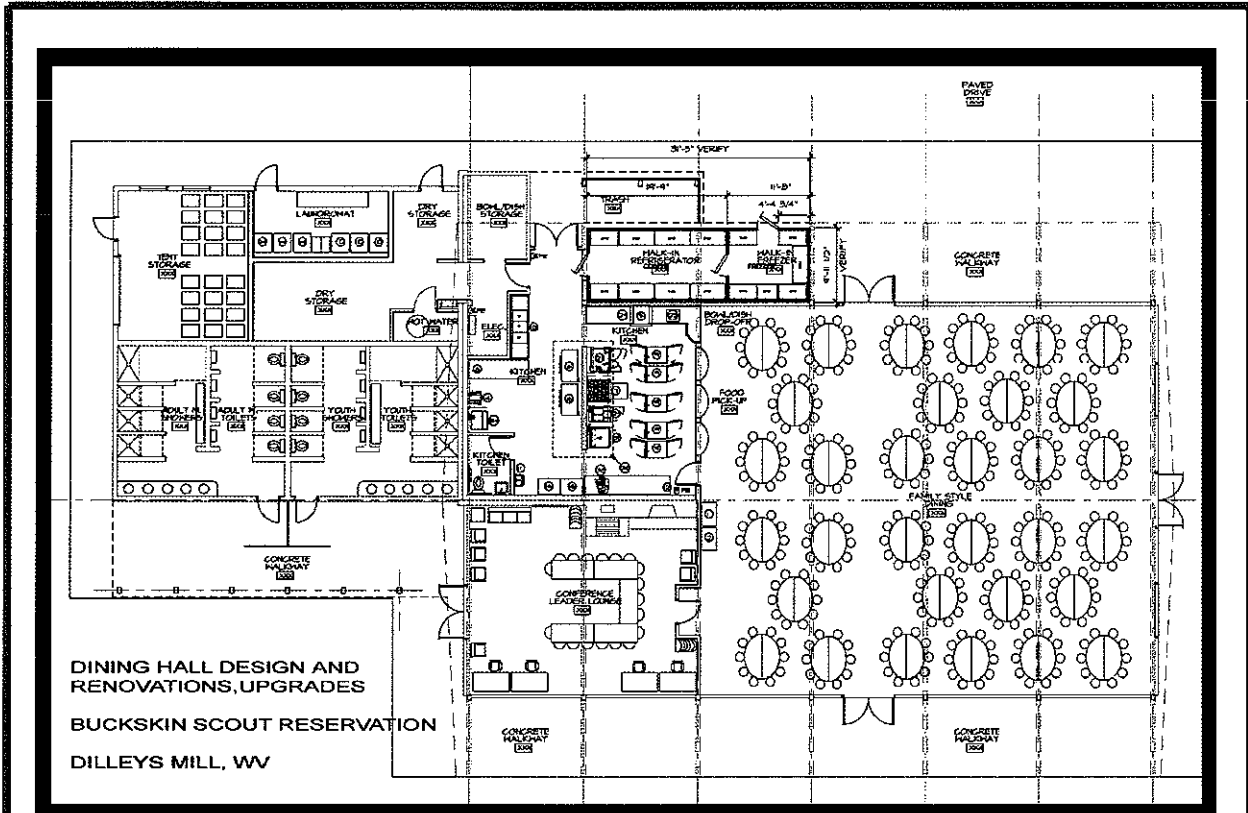
Brooks McCabe, McCabe • Henley
P. O. Box 11108, Charleston, WV 25339, 304-342-4415

Summers Square, Summers and Quarrier streets, Charleston, WV
Capitol City Building, Capitol and Quarrier streets, Charleston, WV
One Kenton Drive, Northgate Office Park, Charleston, WV
KB & T Building, Capitol Street, Charleston, WV
The Strand, Hale Street, Charleston, WV

Rick Atkinson, Central West Virginia Regional Airport Authority,
100 Airport Road, Suite 175, Charleston, WV, 304-344-8033

Yeager Airport Parking Facility
Yeager Airport, John D. Rockefeller IV Terminal
Passenger Access Control and ADA Accessibility

BOY SCOUT CAMP DINING HALL



Dining Hall Design, Renovation Buckskin Scout Reservation Dilley's Mill, West Virginia

Complete redesign and renovation of 1960 dining facility. Features include new kitchen, food prep and food storage, accessible dining and toilets, storage space, adult leader lounge and conference area.

Size: 7500sf
 Cost: \$ 750,000
 Completion: Phase One: 2006

Outdoor Meeting/Dining Pavilion

Rustic outdoor pavilion for meeting and dining activities.

Size: 3600sf
 Cost: \$ 250,000
 Completion: Pending Funding

CHIEF LOGAN LOCOMOTIVE SHELTER

Cross-Section Annotations:

- PRE-FINISHED METAL DECK 1/2" THICKNESS 11.40 SLOPE
- PRE-FINISHED METAL FASCIA TO MATCH METAL ROOFING COLOR
- SEE STRUCTURAL
- CONSTRUCT TEMPORARY ENCLOSURE TO PROTECT LOCOMOTIVE DURING CONSTRUCTION
- HISTORIC LOCOMOTIVE PROTECT CURBS CONSTRUCTION
- 1000' GAS FLOOR
- REPAIR AND ADD STONE DALLAGE AS REQUIRED TO MATCH WITH NEW WALK AND GRADE STONE TO MATCH EXISTING TYPE AND SIZE
- 5'-0"
- NEW FIGURES, SEE SITE PLAN
- NEW CONCRETE WALK, SEE SITE PLAN FOR ELEVATION
- SEED DENARED AREAS
- PROVIDE NEARLIE END CONTROL STEPS TO ALL ANGLED AND HORIZONTAL SURFACES PER MANUFACTURER'S RECOMMENDATIONS, TYPICAL
- LOAD, GALV. STEEL PIPE RAILING WITH 3/4" DIA. PICKETS AT 4' O.C. SET RAILING IN PIPE SLEEVES WITH NON-METALLIC NON-SKID, GRATE.
- PRE-FINISHED METAL FASCIA TO MATCH METAL DECK COLOR
- SEE STRUCTURAL
- 6" CONCRETE WALK ON 4" FIBERGLASS FILL REIN. WALK WITH 600x1144P
- SEED DENARED AREAS
- PERFOR. FILL FILTER FABRIC
- 6" PERFORATED DRAIN PIPE TO DRAINAGE
- SEE STRUCTURAL

Elevation Annotations:

- BASED ON RELIEF WITHIN BASED MINUS 1/4" OFF WITH ON EXTERIOR SIDE, PAINT AS DIRECTED.
- STEEL PLATE OR CAST BRASS NUMBER GRAVING WITH OR PAINTED TO STEEL CHANNELS ON EXTERIOR SIDE, PAINT AS DIRECTED.
- EXPOSED ALUMINUM DOWN FRAME PAINT AS DIRECTED, SEE SPECIFICATIONS.
- DRY POLYURETHANE FACED EXPOSING POLY. 2X6" ACROSS DEPTHS.
- REPAIR/PAINT FILL GULLIES OVERHANGS AS DETERMINED BY ARCHITECT.
- STEEL CHANNELS PAINT AS DIRECTED.
- VERIFY AND COORDINATE ELECTRICAL CONNECTION.
- EXPOSED ALUMINUM FRAME PAINT AS DIRECTED.
- STEEL CHANNELS PAINT AS DIRECTED. STEEL CHANNEL C7 X 4.8 TYPICAL.
- CONCRETE SEE STRUCTURAL PAINT AS DIRECTED.
- SPRINKLER HEADS, TYPICAL.
- BASE PLATE AND 3/4" DIA. ANCHOR BOLT PAINT AS DIRECTED.
- INJECTION BOX AND CONDUIT, SEE ELECTRICAL.

Photograph Details:

- CHESAPEAKE & OHIO
- 2755

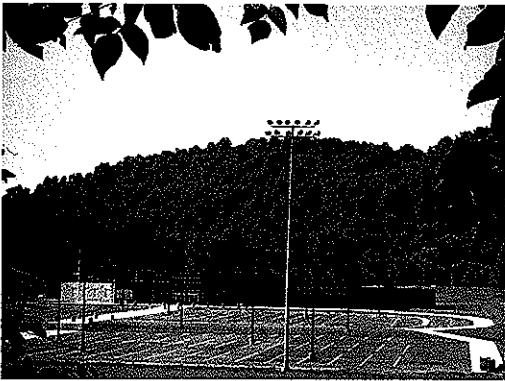
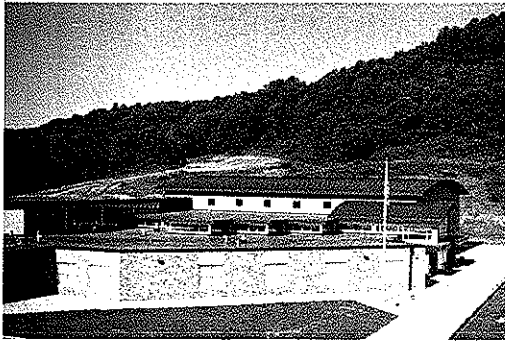
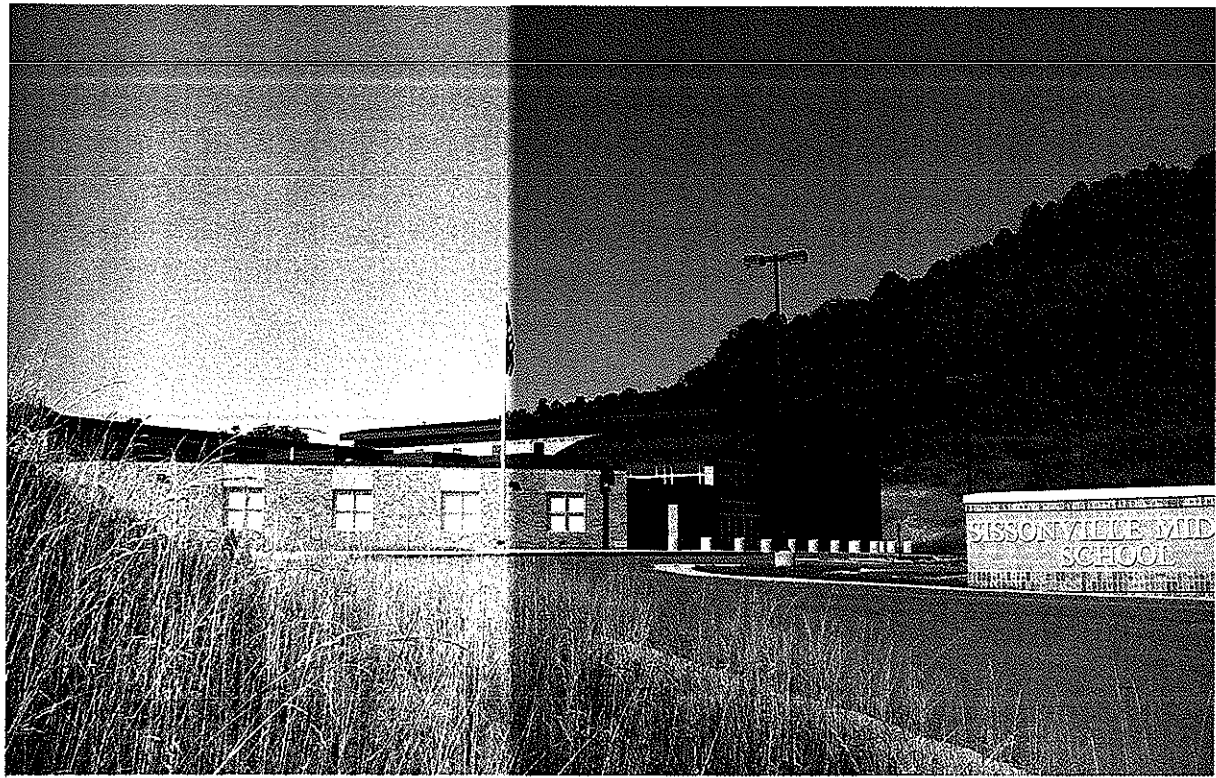
Chief Logan State Park C & O Locomotive 2755 Locomotive Shed and Displays

An outdoor protected railroad themed shed to protect the recently restored 2755 Locomotive, ADA accessible with interpretive historical display and information kiosks.

Completion:

Pending

SISSONVILLE MIDDLE SCHOOL

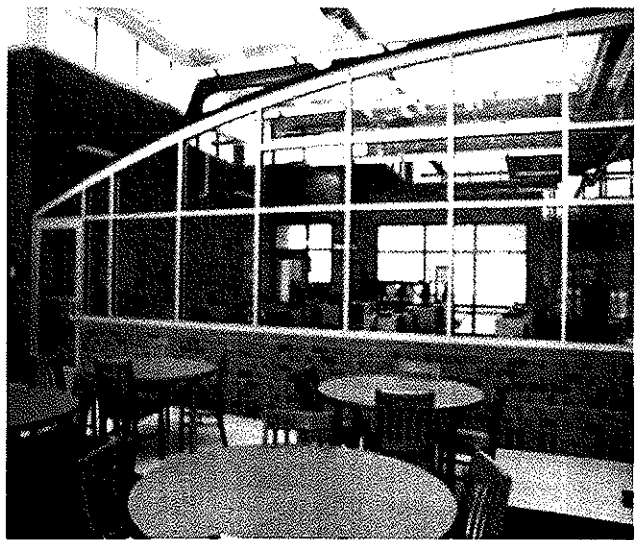
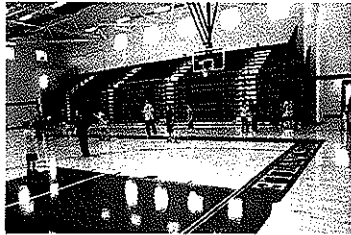
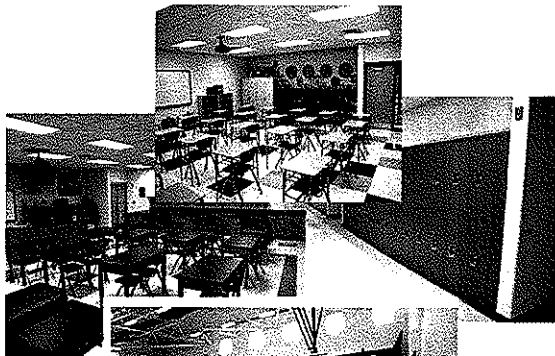


Sissonville Middle School
5950 Sissonville Road
Sissonville, West Virginia

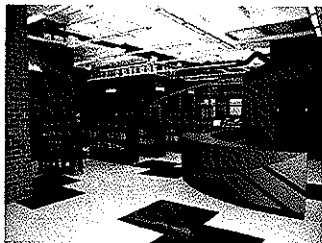
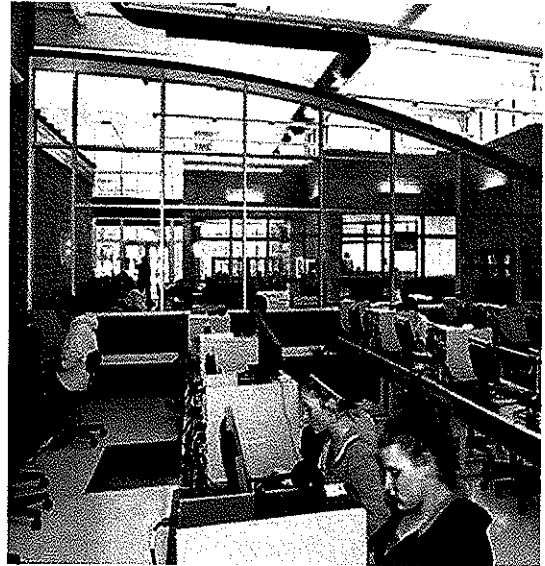
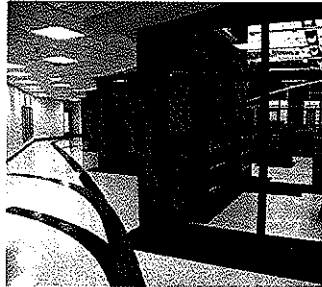
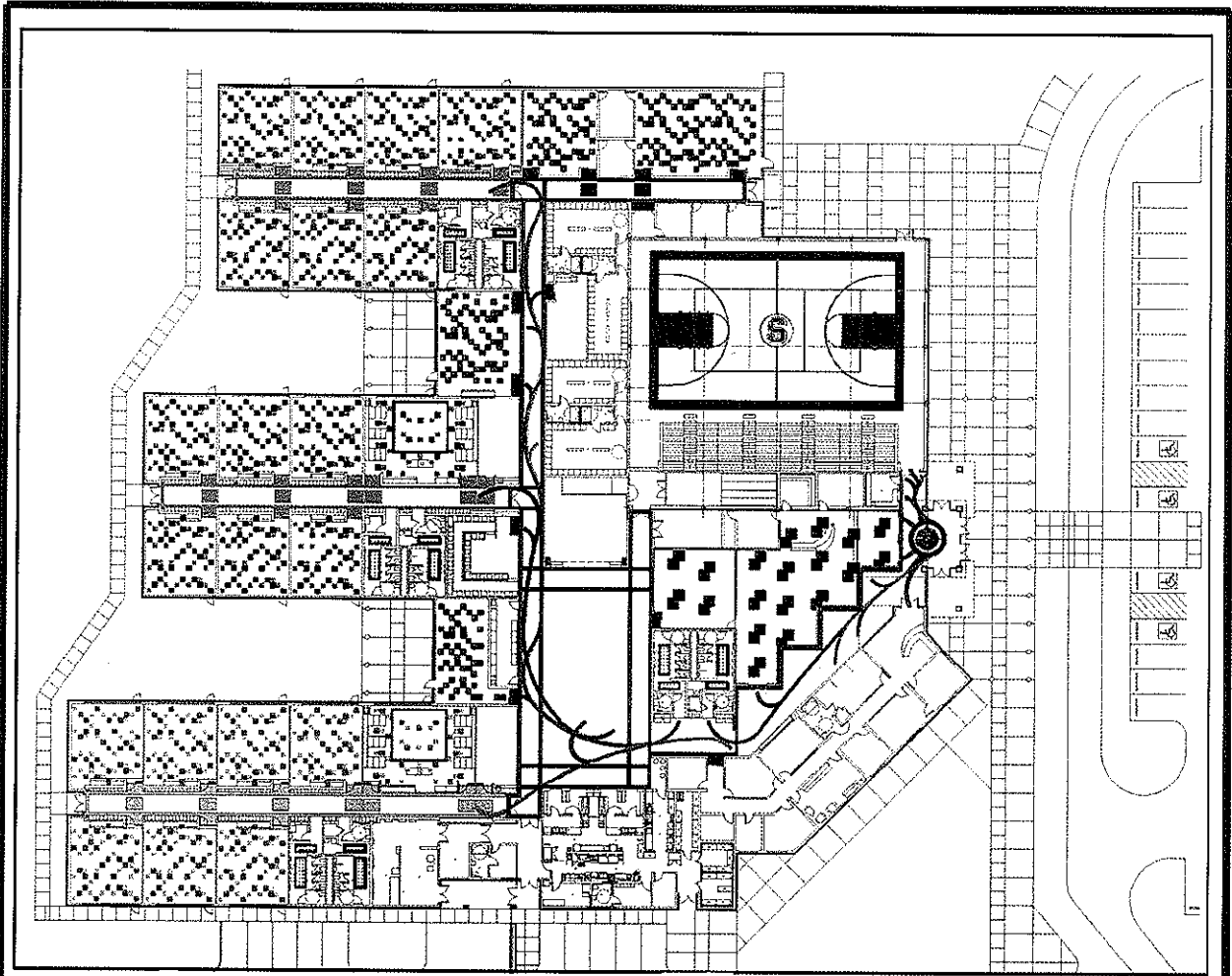
New construction consisting of
classrooms, gymnasium,
commons/cafeteria, kitchen,
media center, administrative
offices, band/choir room,
toilets, and related site work

Size: 70,000 sf
Cost: \$ 17,000,000
Completion: 2007

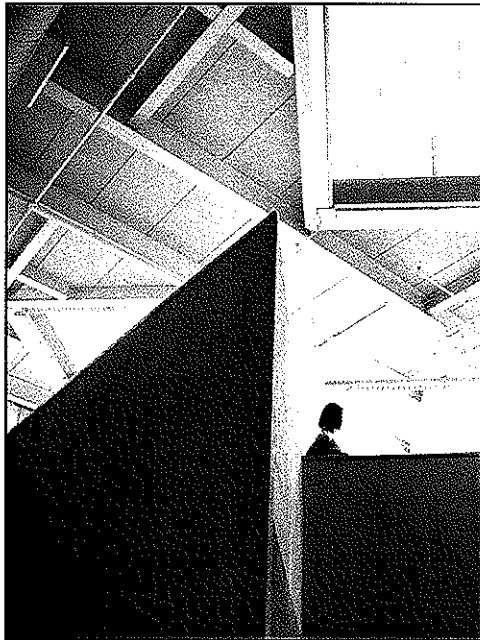
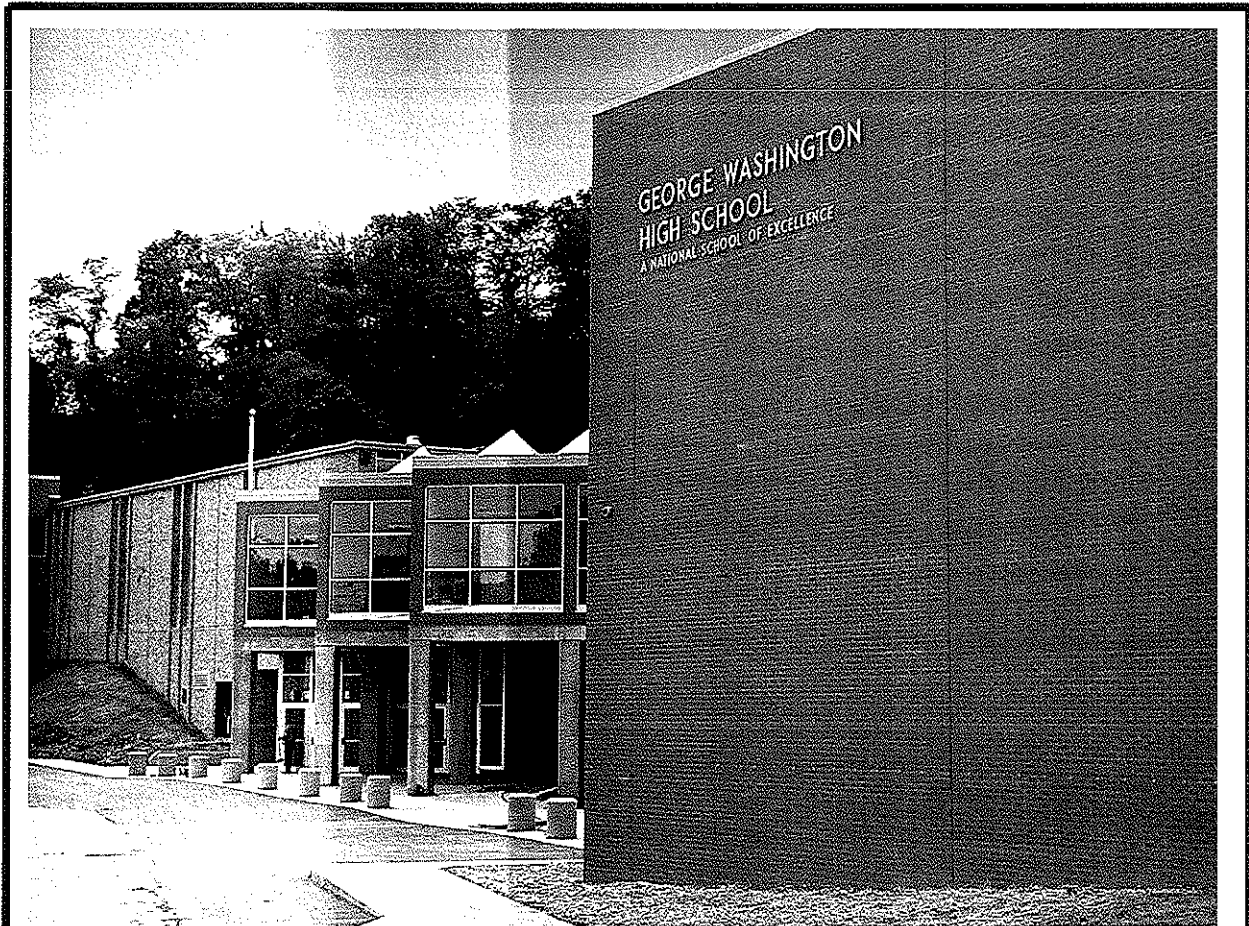
SISSONVILLE MIDDLE SCHOOL



SISSONVILLE MIDDLE SCHOOL



GEORGE WASHINGTON HIGH SCHOOL



George Washington High School
1522 Tennis Club Drive
Charleston, West Virginia

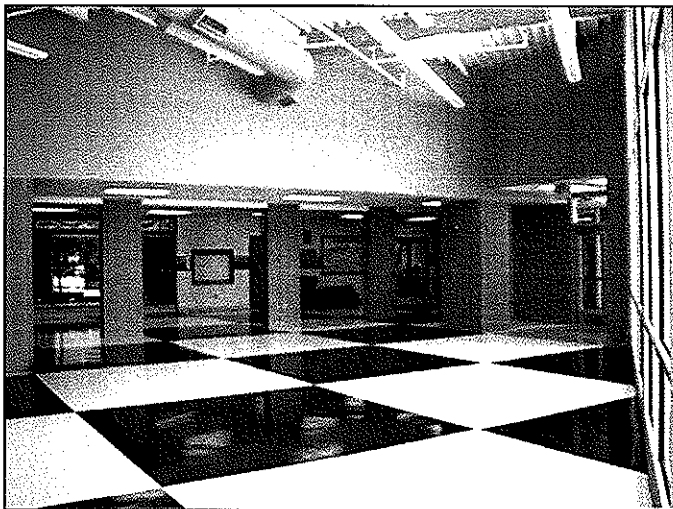
New classroom wing with 15 classrooms, two gang toilets, additional commons area with a new entry, an auxiliary gym, and renovations to existing office area, lower level classrooms, library, and miscellaneous area for teacher offices.

Size: Addition /renovation	35,462 sf
	9,000 sf
Construction Cost:	\$ 3,400,000
Completion:	2002

SOUTH CHARLESTON HIGH SCHOOL



Commons Addition



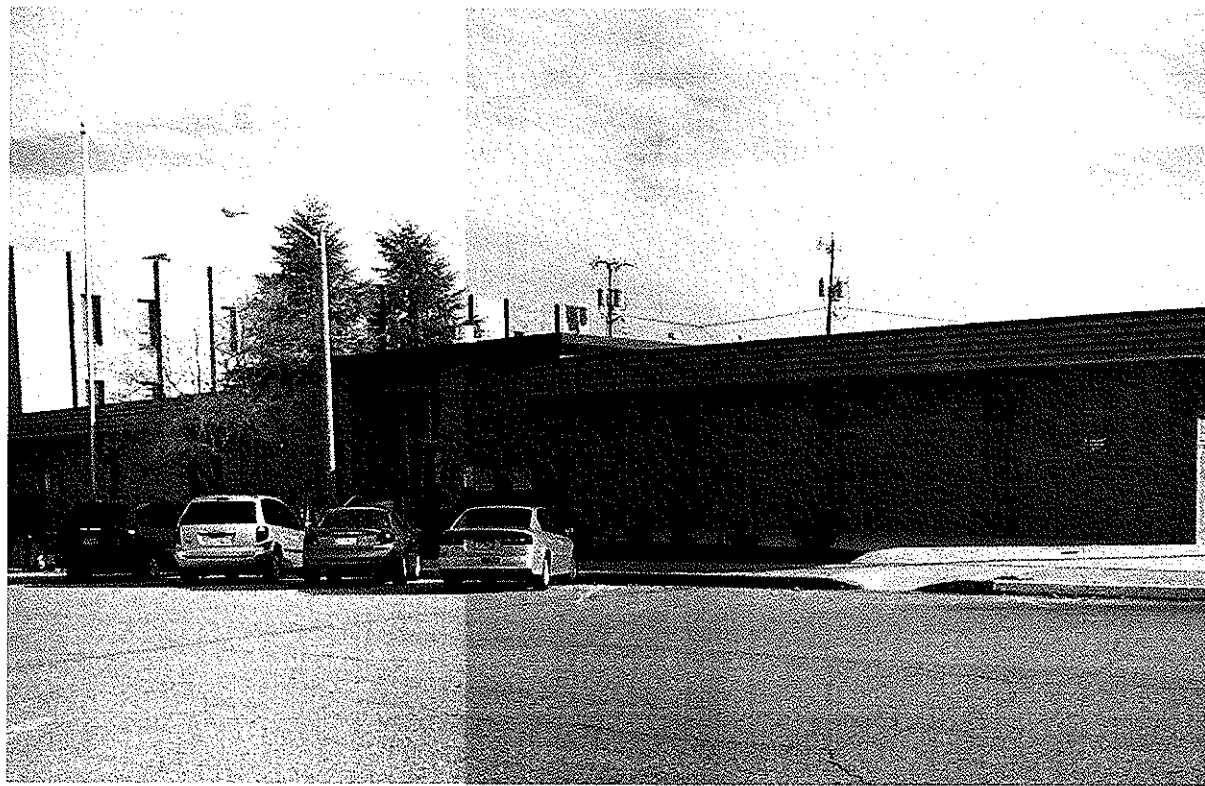
Commons Area

South Charleston High School
One Eagle Way
South Charleston, West Virginia

Commons addition, classroom
addition, dining addition and
renovation, science labs

Size: Addition 19,042 sf
Renovations 2,858 sf
Cost: \$ 2,000,000
Completion: 2000

SOUTH CHARLESTON PUBLIC LIBRARY



Before



After

South Charleston Public Library
South Charleston, West Virginia

New main accessible entry, complete interior renovation and reconstruction along with and including new ADA staff and public toilets, stack areas, circulation desk and reading areas, with three small additions to an existing library facility.

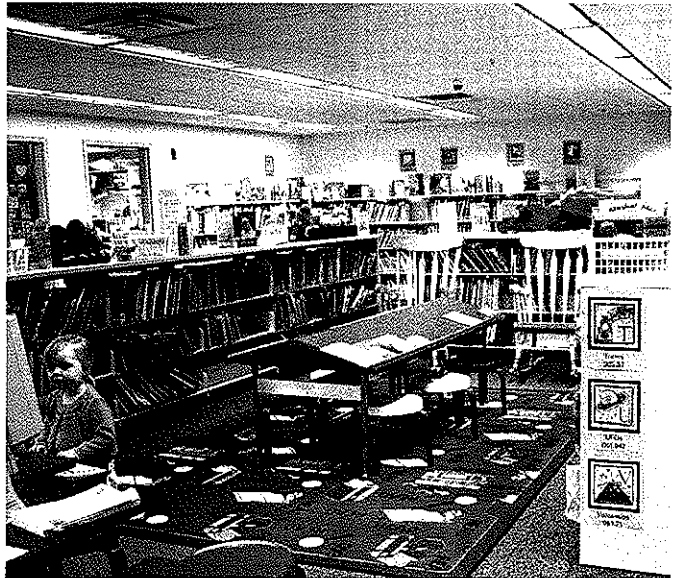
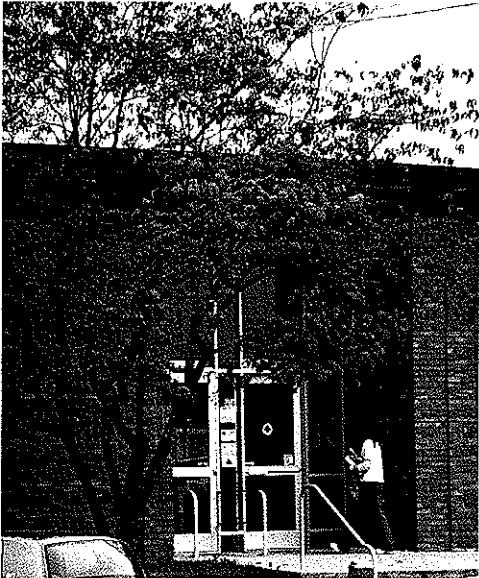
Library remained open during all phases of construction.

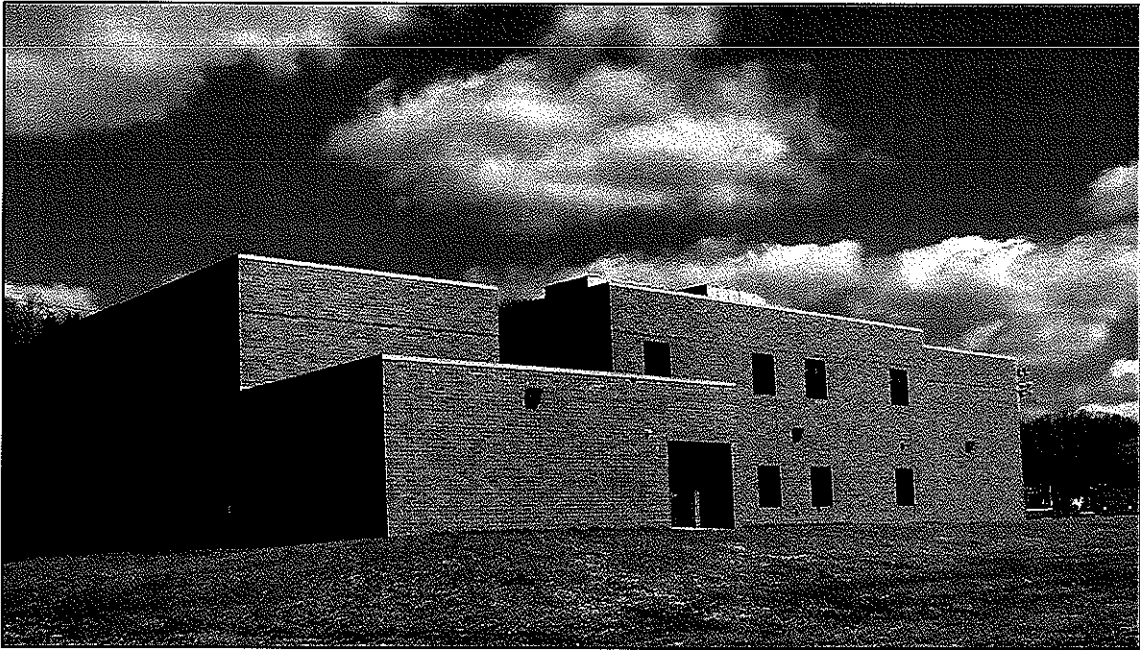
Renovations	15,455 sf
Addition	2,396 sf
Construction Cost	\$ 1,200,000
Completion	2003

ONVISIONS

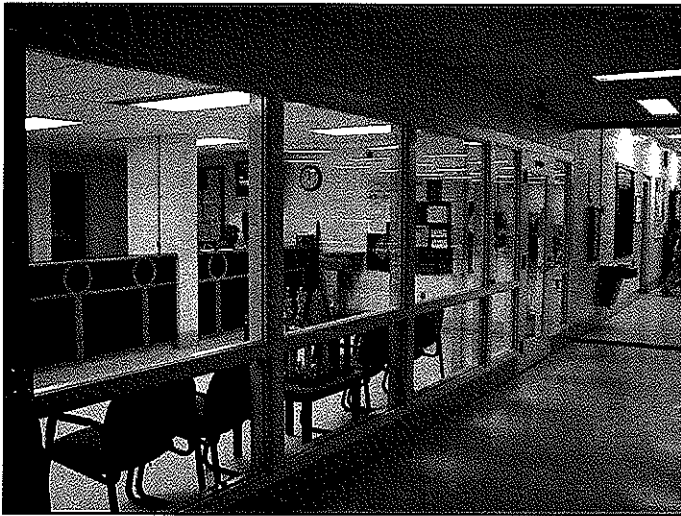
A · R · C · H · I · T · E · C · T · S

SOUTH CHARLESTON PUBLIC LIBRARY





Classroom Wing Addition



Office/Reception at New Commons

Elkview Middle School
5090 Elk River Road North
Elkview, West Virginia

Additions and renovations including, but not limited to, a new two-story classroom wing with eight classrooms and two gang toilets, additional Commons area with renovations to existing office area, lower and upper level classrooms, and existing toilets.

Size: Addition	8,443 sf
Renovations	81,548 sf
Cost:	\$ 1,500,000
Completion:	2003

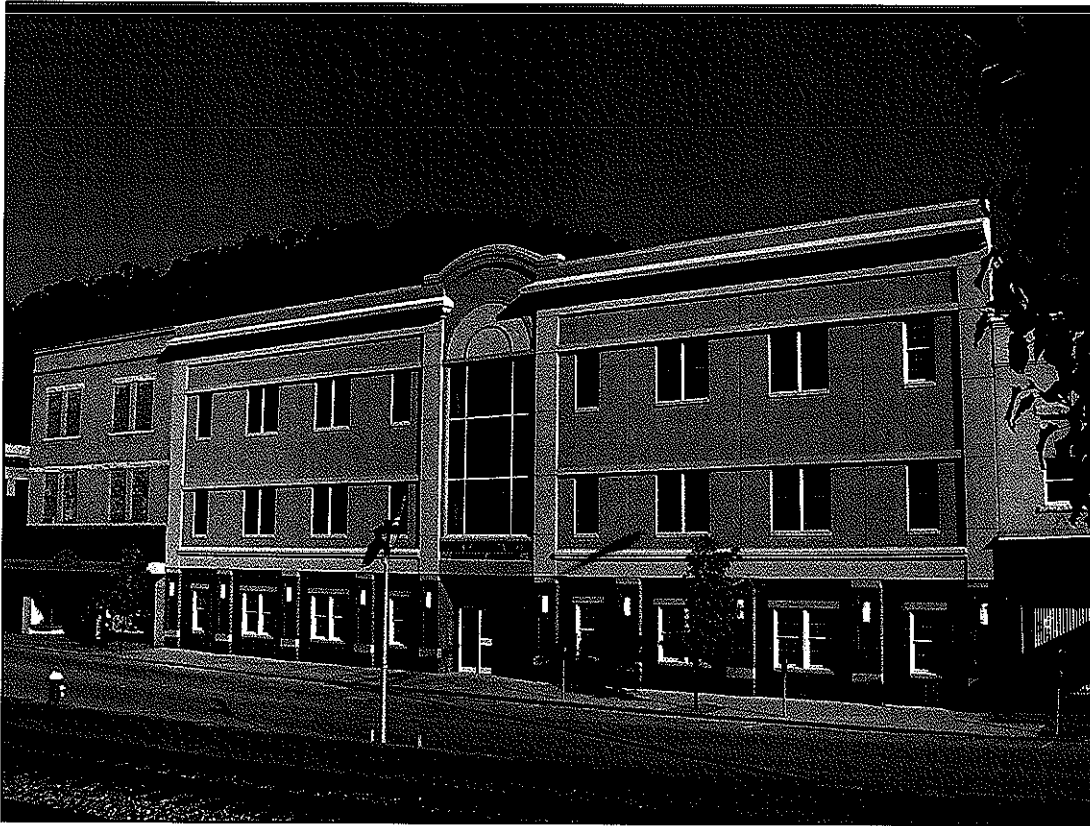


A G Edwards & Sons, Inc.
500 Lee Street East
Charleston, West Virginia 25301

Partial Fourth Floor renovation of
Laidley Tower, Charleston,
West Virginia to provide office space

Size:	6,639 sf
Construction Cost:	\$ 450,000
Completion:	2007

UPPER KANAWHA VALLEY TECHNOLOGY BUILDING



Upper Kanawha Valley
Technology Community Building
Montgomery, West Virginia

Basement build out for the
National Publishing Innovation
Center, ink research labs.

Cost: \$275,000
Completion: 2008

Ham Engineering
Structural Engineers
South Charleston, WV

Project Experience

Ham Engineering is normally retained as the structural consultant for the Owner, the Architect or the General Contractor on a project. The majority of the structural engineering performed by our firm involves projects in the commercial, retail, educational, industrial and residential areas. The following is a partial listing of projects completed with in the last five years.

Sissonville Middle School
Sissonville, WV

New Educational Facility with three wings of classroom space and including a student commons area, administration offices, media center/library, dining area and a gymnasium. One story steel frame and load bearing masonry walls. Due to soils concerns at the site, the foundation design included a stiffened mat type foundation to resist settlement and cracking.

Elkview Middle School
Elkview, WV

Additions to an Existing Educational Facility. Included additional classroom space, relocated stair towers, and expansion of both the dining area and the media center/library area.

Piedmont Elementary Addition
Charleston, WV

Classroom and multi purpose room addition to existing building. Two story steel and masonry structure with concrete floors.

WOWK Television Building
13 Kanawha Boulevard
Charleston, WV

Television Studio and offices. Three story steel frame with concrete floors on joists. Spread foundation. Unusual floor plan with 45 degree corners. Project was done Design Build with General Contractor as prime.

Ham Engineering Project Experience, Cont'd

Tri-State Racetrack and Gaming Addition Cross Lanes, WV

Video Gaming Facility and Offices. One story steel frame addition with concrete slab on grade that included prefabricated electrical and data duct ways. Project also included several elevated performance areas, overhead access ways, and a shop fabricated steel tube truss pedestrian bridge with escalator from elevated parking area.

Holiday Inn Civic Center Huntington, WV

Hotel and related facilities. Five story masonry building with pre-stressed precast concrete plank floors. Steel framed canopy.

USPS Post Office Beckley, WV

Post Office. One-story steel frame supporting built-up roof with exterior brick veneer walls. Exterior loading docks for variable size trucks.

USPS Post Office Princeton, WV

Renovations of Existing Building for New Post Office. Existing one-story steel frame supporting built-up roof with exterior brick veneer walls. Modified to include two new exterior loading dock areas for variable size trucks and roof modifications for new HVAC systems.

Charleston Fire Station Corridor G Charleston, WV

Fire Station. One-story wood framed building with wood floor joists. Partial second floor.

American Freightways Terminal Nitro, WV

Truck terminal. One-story steel moment frame on concrete slab.

Ham Engineering Project Experience, Cont'd

BIDCO Shell Building,
Southridge Center
Charleston, WV

Shell building for future business relocations to Charleston. One-story industrial/warehouse space with an office wing and a future office mezzanine level. Structural steel frames supporting a built-up roof on joists with masonry exterior walls.

City Holding, Inc.
Cross Lanes, WV

General Offices for bank processing. Three-story with partial basement. Structural steel frame with concrete floors on joists. Caisson foundations due to extremely poor soil conditions.

Caperton Center
WVU Parkersburg
Parkersburg, WV

Classrooms, labs and office space. Two-story steel framed with concrete floor on joists. Extensive use of curved and intersecting exterior walls.

Buckingham Square
Grand Cayman, BWI

Bank with general office space on second floor. Two-story structural steel moment frame with concrete floors on steel joists. Designed for hurricane force winds.

Medical Office Building
Division Street
South Charleston, WV

Medical offices located across from Thomas Memorial Hospital. Three story steel frame with concrete floors on joists.

Ham Engineering Project Experience, Cont'd

FOG Building

MacCorkle Avenue
South Charleston, WV

Medical and General offices located near Thomas Memorial Hospital. Four-story steel frame with concrete floors on joists.

G & G Building

Scott Depot, WV

Office Building. Four-story steel moment frame with concrete floor on joists. Set backs at each corner complicated the structural design.

Skaff Medical Building

Charleston, WV

Medical Office Building. One-story masonry building supporting a built-up roof on steel joists.

Capital State Bank

Southridge Center
Charleston, WV

Building houses a bank on the lower floor and office space on the second floor. Two-story wood structure with wood and gypcrete floors.

Family Enrichment Center

Patrick Street
Charleston, WV

Community space and related offices. Renovations and additions at the former West Virginia Tractor Building. One-story steel frame with built-up roof on steel joists. Partial second floor.

Musselman Middle School

Berkeley County, WV

Classrooms, labs and other related educational facilities. Two-story steel and masonry structure with concrete floors on joists.

STATE OF WEST VIRGINIA
Purchasing Division

PURCHASING AFFIDAVIT

West Virginia Code §5A-3-10a states: No contract or renewal of any contract may be awarded by the state or any of its political subdivisions to any vendor or prospective vendor when the vendor or prospective vendor or a related party to the vendor or prospective vendor is a debtor and the debt owed is an amount greater than one thousand dollars in the aggregate.

DEFINITIONS:

"Debt" means any assessment, premium, penalty, fine, tax or other amount of money owed to the state or any of its political subdivisions because of a judgment, fine, permit violation, license assessment, defaulted workers' compensation premium, penalty or other assessment presently delinquent or due and required to be paid to the state or any of its political subdivisions, including any interest or additional penalties accrued thereon.

"Debtor" means any individual, corporation, partnership, association, limited liability company or any other form or business association owing a debt to the state or any of its political subdivisions. "Political subdivision" means any county commission; municipality; county board of education; any instrumentality established by a county or municipality; any separate corporation or instrumentality established by one or more counties or municipalities, as permitted by law; or any public body charged by law with the performance of a government function or whose jurisdiction is coextensive with one or more counties or municipalities. "Related party" means a party, whether an individual, corporation, partnership, association, limited liability company or any other form or business association or other entity whatsoever, related to any vendor by blood, marriage, ownership or contract through which the party has a relationship of ownership or other interest with the vendor so that the party will actually or by effect receive or control a portion of the benefit, profit or other consideration from performance of a vendor contract with the party receiving an amount that meets or exceeds five percent of the total contract amount.

EXCEPTION: The prohibition of this section does not apply where a vendor has contested any tax administered pursuant to chapter eleven of this code, workers' compensation premium, permit fee or environmental fee or assessment and the matter has not become final or where the vendor has entered into a payment plan or agreement and the vendor is not in default of any of the provisions of such plan or agreement.

Under penalty of law for false swearing (*West Virginia Code* §61-5-3), it is hereby certified that the vendor affirms and acknowledges the information in this affidavit and is in compliance with the requirements as stated.

WITNESS THE FOLLOWING SIGNATURE

Vendor's Name: CMA Engineering

Authorized Signature: *Daniel L. Ellace* Date: 3/16/2011

State of WV

County of KANAWHA, to-wit:

Taken, subscribed, and sworn to before me this 16 day of MARCH, 2011.

My Commission expires SEPTEMBER 16, 2020.

AFFIX SEAL HERE

NOTARY PUBLIC *Cindy L. Loney*

