



West Virginia Department of Environmental Protection  
Abandoned Mine Lands and Reclamation

RFQ #DEP15224

BID OPENING DATE: 12/07/2010

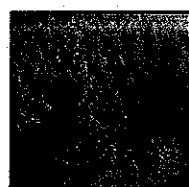
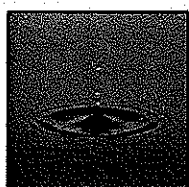
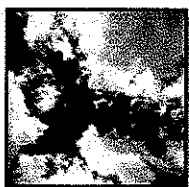
**EXPRESSION OF INTEREST**  
*FOR*  
**PROFESSIONAL ENGINEERING DESIGN SERVICES**  
**AND CONSTRUCTION MONITORING SERVICES**  
*FOR THE*  
**MILL CREEK REFUSE PILE PROJECT**  
*IN*  
**MCDOWELL COUNTY, WEST VIRGINIA**

**SUBMITTED BY:**  
Qk4  
802 B Street  
Suite 200  
St. Albans, WV 25177  
Ph: (304) 201-8980  
Fx: (304) 201-8983

RECEIVED

2010 DEC -7 A 8:00

PROCURING DIVISION  
STATE OF WV



Architecture Engineering Planning

*Groundbreaking by Design.*



802 B Street Suite 200  
St. Albans, West Virginia 25177  
Ph. 304-201-8980  
Fx. 304-201-8983  
www.qk4.com

December 07, 2010

Chuck Bowman, Buyer Supervisor  
West Virginia Department of Administration  
Purchasing Division  
2019 Washington Street, East  
P O Box 50130  
Charleston, WV 25305-0130

**Expression of Interest  
Engineering Design Services and Construction Monitoring Services at the  
Mill Creek Refuse Pile Project  
McDowell County, WV  
RFQ # DEP15224**

Dear Mr. Bowman:

Qk4 is pleased to submit this Expression of Interest to provide professional engineering services to the West Virginia Department of Environmental Protection (WVDEP), Office of Abandoned Mine Lands and Reclamation (AML), for Mill Creek Refuse Pile Project in McDowell County, West Virginia.

Qk4 is a multi-disciplinary firm with a staff of 100 professionals, consisting of civil and structural engineers, planners, architects, landscape architects, environmental specialists and right-of-way acquisition specialists. The firm is headquartered in Louisville, Kentucky and maintains offices in (St. Albans, West Virginia; Frankfort, Kentucky; New Albany, Indiana; Atlanta, Georgia; Ormond Beach, Florida; and Bristol, Tennessee.)

Qk4 staff has previous AML experience including Glen White Air Shafts (DEP #14270), Delbarton (Dardi) Mine Portals (DEP#14524), Hazy Creek (Sprouse) Portals (DEP#14946), and Jonben Refuse Pile Project (DEP#15184). If necessary, two sub-consultants will be utilized on the Richardson Branch Complex Project, NGE, LLC for geotechnical services, and Terradon Corporation for surveying services. Both firms have staff with extensive experience on AML projects.

We look forward to an opportunity to interview for this project. Should you have any questions regarding this submittal or Qk4, please contact me at (304) 201-8980 or at [mnewton@qk4.com](mailto:mnewton@qk4.com).

Sincerely yours,

Steven M. Newton, PE, PS  
Regional Office Manager

## TABLE OF CONTENTS

- ✦ Evaluation Criteria
  - ✦ Project Team
  - ✦ Resume
    - ✦ Steven M. Newton, PE, PS
  - ✦ Firm Experience
- ✦ AML Consultant Qualification Questionnaire (CQQ) - Attachment "B"
- ✦ AML and Related Project Experience Matrix (RPEM) - Attachment "C"
- ✦ Sub-consultants
  - ✦ NGE CCQQ
  - ✦ Terradon CCQQ
- ✦ Purchase Affidavit



## **EVALUATION CRITERIA**

### **A. WV Registered Professional Engineers (Civil or Mining) in the Primary Office:**

The primary office for the performance of this work will be our office in St. Albans, WV. There is one West Virginia registered professional in this office, Steven M. Newton, PE, PS.

Our geotechnical sub-consultant on this project will be NGE, LLC. There are two West Virginia registered professional engineers in their primary office in St. Albans, WV, John Nottingham, PE and Larry Nottingham, PE.

### **B. Reclamation Engineering design experience of the Primary office's WVRPE as it relates to the specific project problem areas:**

Mr. Steven M. Newton, PE, PS is the Office Manager and principal engineer in the St. Albans, WV office. He has 32 years of general civil engineering experience including AML Reclamation projects and other types of projects such as site development, drainage, structural, etc., that include the same common design elements as AML projects such as grading, drainage design, erosion and sediment control, permits, etc.

### **C. Available WV-AML Design Teams within the Primary Office:**

There is one available WV-AML team within the primary office in St. Albans, WV. It will consist of:

Steven M. Newton, PE, PS  
Mat McDougal  
Eric Mercer  
Kristin Lilly

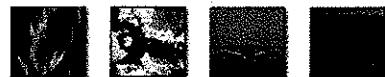
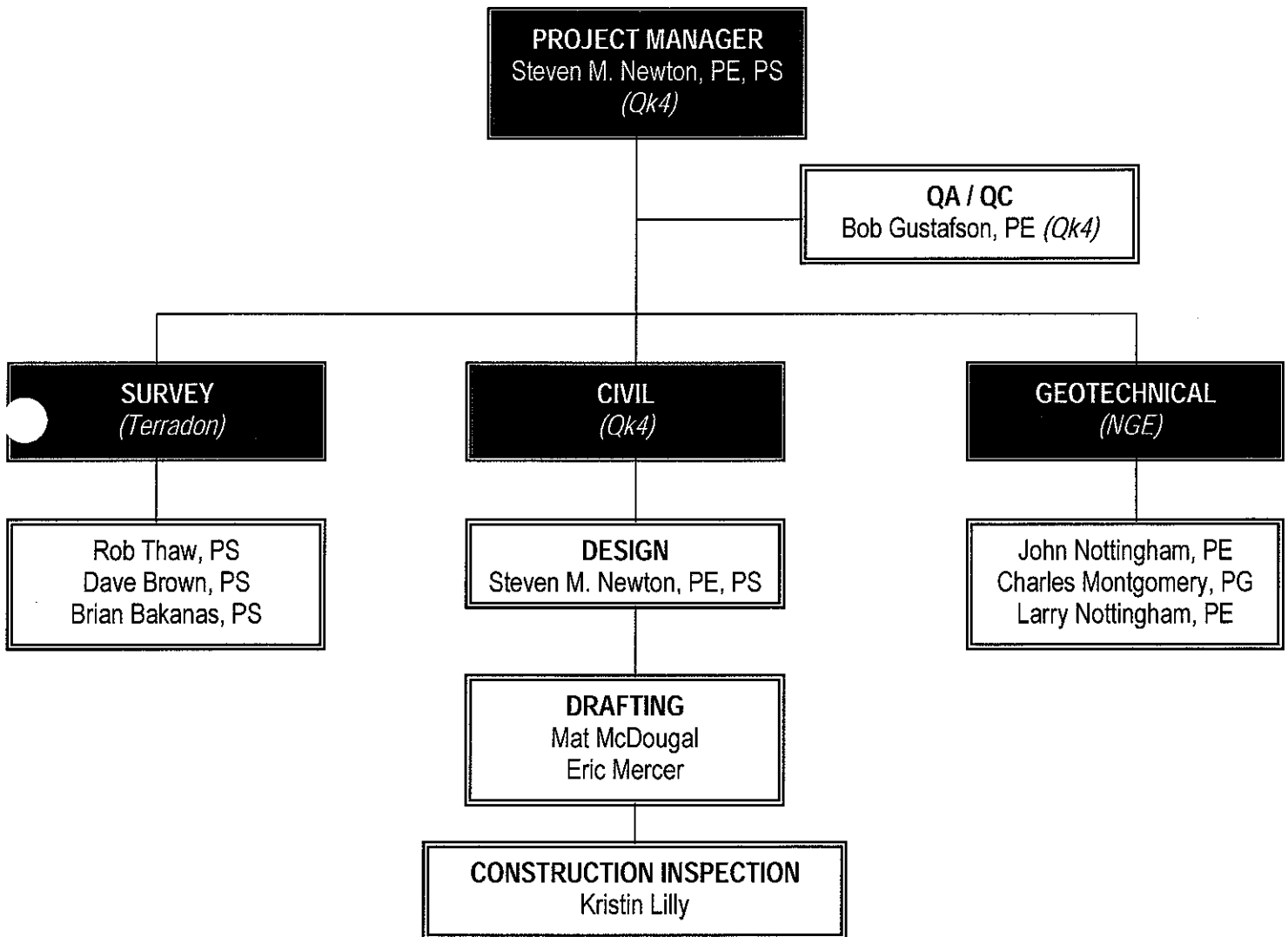
Project Manager / Project Engineer  
Engineering Technician / CAD Designer  
CAD Drafter  
Construction Inspector

### **D. The Oral Interview:**

If we are chosen for an interview, it will be attended by Steven M. Newton and Mat McDougal.



## PROJECT TEAM



## **STEVEN M. NEWTON, PE, PS**

Regional Office Manager, West Virginia / Project Manager

**33 YEARS EXPERIENCE  
23 YEARS WITH Qk4**

### **EDUCATION**

Speed Scientific School  
University of Louisville

### **REGISTRATIONS**

PE / 1984 / KY / 13987  
PE / 1985 / IN / PE21204  
PE / 1995 / NC / 20940  
PE / 1995 / PA / 048599R  
PE / 2000 / WV / 14389  
PLS / 1983 / KY / 2664  
PLS / 1990 / TN / 1593  
PLS / 1990 / IL / 035-0029481  
PLS / 2000 / WV / 2023

### **AFFILIATIONS**

American Council of Engineering Companies  
American Society of Civil Engineers  
National Society of Professional Engineers  
West Virginia Rural Water Association

### **ADDITIONAL EDUCATION**

Introduction to Stream Functions and Processes  
Methods for Stream Channel Assessment and  
Analysis  
Natural Stream Channel Design  
Advanced Natural Stream Design and Monitoring  
State & Federal Legislative Issues  
WV Infrastructure Forum; ACEC  
Copyright Protection of Engineering, Architectural  
and Construction Documents  
Basics of Project Financing  
Trenchless Technology Pipeline Rehabilitation  
Methodologies  
Work Zone Traffic Control; WVDOH  
Dendrology (Tree Identification) - KY

Mr. Newton has experience in a wide array of civil engineering projects for both public and private clients, including commercial developments, drainage improvement projects, landfills, residential developments, transportation, wastewater, and water projects. His project experience includes scheduling, planning, preliminary design, final design, cost estimates, easements / right-of-way acquisition, bidding, and construction management. He has also managed the surveying tasks associated with all of the above, including alta surveys, boundary surveys, condominium plats, descriptions, easement plats, major and minor subdivision plats, right-of-way plats, topographic surveys, etc.

Mr. Newton's AML design experience includes:

**Jonben Refuse Pile Project DEP #15184**  
Raleigh County, West Virginia

**Hazy Creek (Srouse) Portal DEP #14947**  
Raleigh County, West Virginia

**Delbarton (Dardi) Portals DEP #14524**  
Mingo County, West Virginia

**Glen White Air Shafts DEP #14270**  
Raleigh County, West Virginia

Mr. Newton's Rural Highway Drainage design experience includes:

**US 119 - Corridor G**  
Kanawha County, West Virginia

Mr. Newton's Rural Site design experience includes:

**Cobblestone Subdivision**  
Putnam County, West Virginia

Mr. Newton's Drainage design experience includes:

**Beech and Fir Streets Drainage Improvements**  
Putnam County, West Virginia



## **JONBEN REFUSE PILE PROJECT DEP#15184**

Raleigh County, West Virginia

**CLIENT**  
WVDEP  
Office of Abandoned Mine Lands and  
Reclamation  
116 Industrial Drive  
Oak Hill, West Virginia 25901  
Mark Proctor  
304.465.1911

This project includes a Preliminary Site Visit, Research of utilities, Conceptual Design Meeting, Preliminary Design, Final Design, Quantities, Cost Estimate, Construction Specifications, Site Visits, a Pre-Bid Meeting and a Pre-Construction Meeting.

This project includes the re-grading of a five (5) acre refuse area. The plan set will include a Cover Sheet, Plan Sheets, Details, and Erosion and Sediment Control.

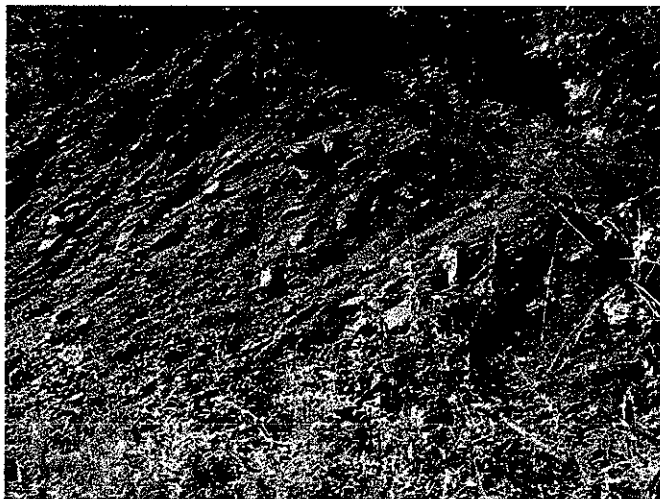
**DATES**  
November 2010 - Present

**PROJECT TYPE**  
Mine Reclamation

**PROJECT LENGTH / SIZE**  
5 Acres

**KEY PERSONNEL**  
Steven M. Newton, PE, PS  
Mat McDougal

**SERVICES PROVIDED**  
Reclamation Plans  
Specifications  
Cost Estimates



## **HAZY CREEK (SPROUSE) PORTAL DEP#14947**

Raleigh County, West Virginia

### **CLIENT**

WVDEP  
Office of Abandoned Mine Lands and  
Reclamation  
116 Industrial Drive  
Oak Hill, West Virginia 25901  
Mark Proctor  
304.465.1911

### **DATES**

May 2010 - Present

### **PROJECT TYPE**

Mine Reclamation

### **PROJECT LENGTH / SIZE**

Stream Bank Protection, Coal Refuse,  
Mine Portal

### **KEY PERSONNEL**

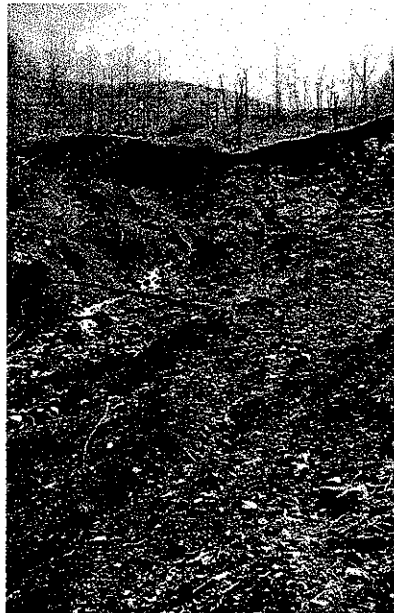
Steven M. Newton, PE, PS  
Mat McDougal

### **SERVICES PROVIDED**

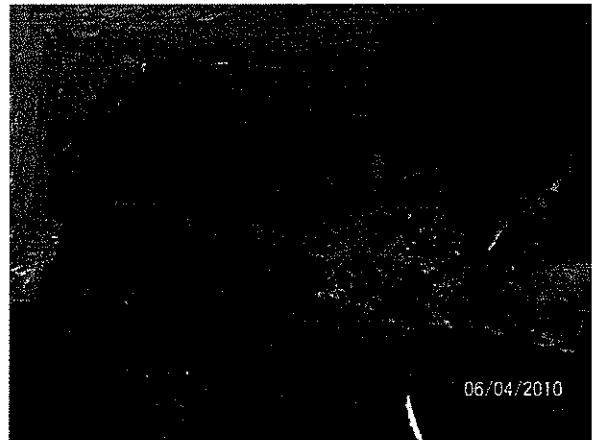
Surveying  
Reclamation Plans  
Specifications  
Cost Estimates

This project includes a Preliminary Site Visit, Research of mine maps, utilities, etc., Surveying, Conceptual Design Meeting, Preliminary Design, Final Design, Quantities, a Cost Estimate, Construction Specifications, Site Visits, a Pre-Bid Meeting and a Pre-Construction Meeting.

This project includes the re-grading of two refuse areas along with stream bank protection. This project also includes the preparation of Reclamation Plans to seal an existing mine portal with a bat gate, and rip-rapped ditches to convey drainage to existing natural drains. This project will also remove existing mine related structures. The plan set will include a cover sheet, plan sheets, ditch profiles, bat gate detail, and ditch details, a temporary creek crossing and erosion and sediment control.



Site 1



Site 2





## **DELBARTON (DARDI) PORTALS DEP#14524**

Mingo County, West Virginia

### **CLIENT**

WVDEP  
Office of Abandoned Mine Lands and  
Reclamation  
116 Industrial Drive  
Oak Hill, West Virginia 25901  
Dean Stiltner  
304.465.1911

### **DATES**

September 2009 - Current

### **PROJECT TYPE**

Mine Reclamation

### **PROJECT LENGTH / SIZE**

14 Mine Portals

### **KEY PERSONNEL**

Steven M. Newton, PE, PS  
Mat McDougal

### **SERVICES PROVIDED**

Surveying  
Reclamation Plans  
Specifications  
Cost Estimates

This project includes a Preliminary Site Visit, Research of mine maps, railroad plans, utilities, etc., Surveying, Conceptual Design Meeting, Preliminary Design, Final Design, Quantities, a Cost Estimate, Construction Specifications, Site Visits, a Pre-Bid Meeting and a Pre-Construction Meeting.

This project includes the preparation of Reclamation Plans to seal 14 existing mine portals with either bat gates or wet seals, and rip-rapped ditches to convey drainage to an existing natural drain or railroad ditch. This project also includes demolition of existing buildings and other miscellaneous mine related structures. The plan set will include a cover sheet, plan sheets, ditch profiles, bat gate, wet seal and ditch details, a temporary creek crossing and erosion and sediment control.



## **GLEN WHITE AIR SHAFTS DEP #14270**

Raleigh County, West Virginia

**CLIENT**  
WVDEP  
Office of Abandoned Mine Lands and  
Reclamation  
116 Industrial Drive  
Oak Hill, West Virginia 25901  
Mark Proctor  
304.465.1911

**DATES**  
July 2008 – September 2009

**PROJECT TYPE**  
Mine Reclamation

**PROJECT LENGTH / SIZE**  
Two Air Shafts  
18 feet x 39 feet  
250 and 265 feet Deep

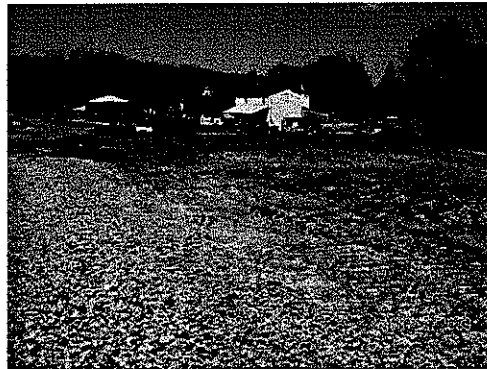
**KEY PERSONNEL**  
Steven M. Newton, PE, PS  
Mat McDougal

**SERVICES PROVIDED**  
Surveying  
Reclamation Plans  
Specifications  
Cost Estimates

**CONSTRUCTION COST**  
\$228,500

This project included a Preliminary Site Visit, Research of mine maps, highway plans, utilities, etc., Field Research, Excavation, Surveying, Conceptual Design Meeting, Preliminary Design, Final Design, Quantities, a Cost Estimate, Construction Specifications, Site Visits, a Pre-Bid Meeting and a Pre-Construction Meeting.

Reclamation plans were prepared to seal two existing air shafts. Each air shaft was 18 feet x 39 feet and approximately 250 feet and 265 feet deep. Each was backfilled with stone to a depth near the surface, capped with concrete and covered with a minimum of two feet of soil, and re-vegetated. Sites were re-graded to divert surface water away from the area. Plans consisted of a site plan, cross-sections and details for each site. Exploratory excavations of each site were required to determine accurate dimensions of each shaft.



Site 1 – Church



Site 2 – Highway



## US 119 – CORRIDOR G

Kanawha County, West Virginia

**CLIENT**  
Terradon Corporation  
401 Jacobson Drive  
Poca, West Virginia 25159  
Tim White  
(304) 755-8291

**DATES**  
January 2000 – June 2000

**PROJECT TYPE**  
Rural 6-Lane Divided Highway

**PROJECT LENGTH / SIZE**  
2.5 Miles

**KEY PERSONNEL**  
Steven M. Newton, PE, PS

**SERVICES PROVIDED**  
Drainage Plans  
Maintenance of Traffic Plans  
Retention Pond Design  
Retaining Wall  
Signage Plans  
Pavement Marking Plans  
Traffic Studies



Qk4 prepared signing plans, pavement marking plans, traffic studies, retaining wall studies, drainage design, retention pond design, and maintenance of traffic plans, for widening a segment of an existing 4-lane divided highway in the densely, commercially developed area between the Trace Fork and Davis Creek bridges, south of Charleston. Corridor "G" (US 119) is the only major highway for Charleston to southwestern West Virginia, carrying traffic volumes in excess of 50,000 vehicles per day. Construction of the \$10.2 million, 6-lane divided highway, along the existing alignment, is complete.



## **COBBLESTONE SUBDIVISION**

Putnam County, West Virginia

### **CLIENT**

Cobblestone Subdivision, LLC  
500 Corporate Centre Drive  
Suite 550  
Scott Depot, West Virginia 25560  
Mr. Blake Stevens  
304.757.9196

### **DATES**

January 2003 - Present

### **PROJECT TYPE**

Site Development

### **PROJECT LENGTH / SIZE**

268 acres

### **KEY PERSONNEL**

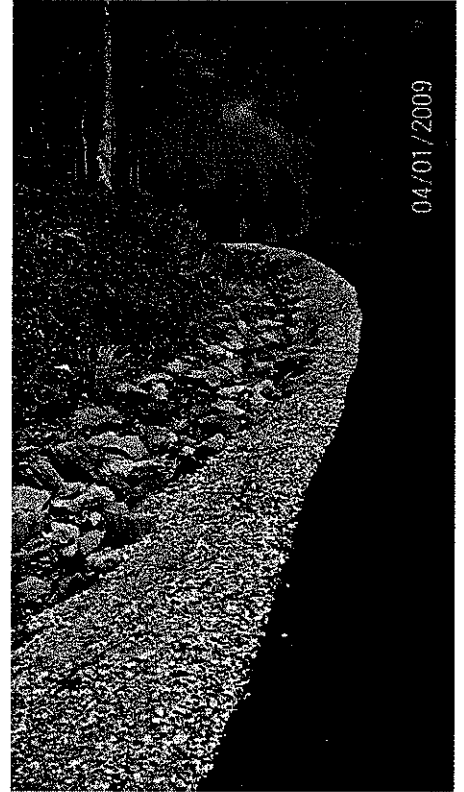
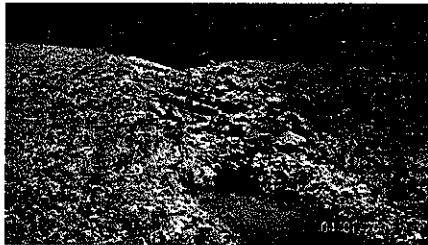
Steven M. Newton, PE, PS

### **SERVICES PROVIDED**

Surveying & Mapping  
Construction plans  
Permits  
Construction Staking

### **CONSTRUCTION COST**

Engineering - \$100,000  
Construction - 3.8 Million



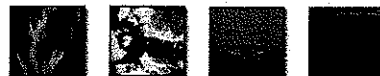
Cobblestone Subdivision is an ongoing residential subdivision of approximately 435 acres. This premier subdivision, with beautiful ridge top views, is located in Putnam County, West Virginia. This community includes the natural surroundings of nature trails, as well as the security of a gated neighborhood.

**Section One** consisted of approximately 103 acres and 57 lots. Construction was completed in January of 2003, at a cost of approximately 1.5 million dollars.

**Section Two - Phase One** consisted of 75 acres and 38 lots. Construction was completed in December of 2005, at a cost of approximately \$900,000 dollars.

**Section Two - Phase Two** consisted of 50 acres and 23 lots. Construction started in April 2007, and was completed in September, at an approximate cost of \$500,000 dollars.

**Section Three** consisted of 40 acres and 24 lots. Construction was completed in 2009, at an approximate cost of \$900,000 dollars.



Architectural Engineering Planning

*Groundbreaking by Design.*

# **TOWN OF ELEANOR BEECH AND FIR STREETS DRAINAGE IMPROVEMENTS**

Putnam County, West Virginia

#### **CLIENT**

Town of Eleanor  
401 Roosevelt Boulevard  
P.O. Box 185  
Eleanor, West Virginia 25070 - 0185  
Fred Halstead, Mayor  
304.586.2319

#### **DATES**

2002-2003

#### **PROJECT TYPE**

Storm Drainage System Improvements

#### **PROJECT LENGTH / SIZE**

Approximately 1,200 linear feet of storm drains  
ranging from 36 inch to 42 inch

#### **KEY PERSONNEL**

Steven M. Newton, PE, PS

#### **SERVICES PROVIDED**

Storm Sewer Design  
Preparation of Required Permits  
Preparation of Construction Specifications and Bidding  
Documents  
Bidding Assistance  
Construction Contract Administration

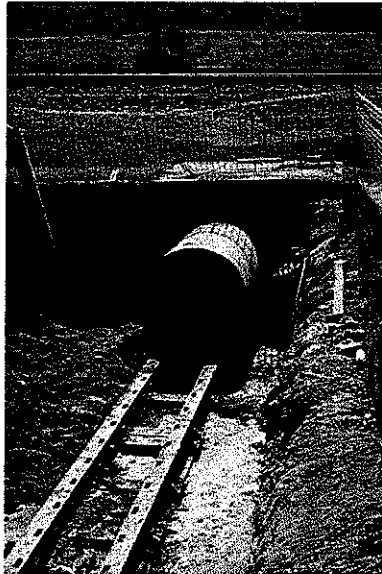
#### **CONSTRUCTION COST**

Engineering - \$17,772  
Construction Cost - \$66,295

This project included all of the planning, engineering and management services necessary to develop a new routing for storm water flow of a major drainage area in the Town of Eleanor where serious residential flooding was occurring due to the inadequacy of the old system. The Fir and Beech Streets project was the first phase of an overall Master Plan (also developed by Qk4) to identify and find solutions for flooding problems in numerous areas of the town.

The rerouting of this storm water flow required a new crossing of W. Va. Route 62, the major arterial highway in the area, and a new crossing of CSX Railroad mainline track.

The new system discharges to a major drainage structure of the U.S. Army Corps of Engineers, who reviewed and approved the plan.



**WEST VIRGINIA DEPARTMENT OF ENVIRONMENTAL PROTECTION  
AML CONSULTANT CONFIDENTIAL ALIFICATION QUESTIONNAIRE**

Attachmen 'B'

PROJECT NAME Design Services for the: Mill Creek Refuse Pile Project		DATE (DAY, MONTH, YEAR) December 7, 2010		FEIN 61-0865261		
1. FIRM NAME Presnell Associates, Inc. dba Qk4	2. HOME OFFICE BUSINESS ADDRESS 815 West Market St., Suite 300 Louisville, KY 40202-2654		3. FORMER FIRM NAME Presnell Associates, Inc.			
4. HOME OFFICE TELEPHONE (800) 928-2222	5. ESTABLISHED (YEAR) 1974 - Company 2000 - WV Office	6. TYPE OWNERSHIP Corporation				
7. PRIMARY AML DESIGN OFFICE: ADDRESS/ TELEPHONE/ PERSON IN CHARGE/ NO. AML DESIGN PERSONNEL EACH OFFICE 802 B Street, Suite 200, St. Albans, WV 25177, (304)201-8980, S. Michael Newton, PE, PS, AML Personnel - 3						
8. NAMES OF PRINCIPAL OFFICERS OR MEMBERS OF FIRM David E. Smith, PE; Pres. & CEO Glen M. Kelly, PE, PLS; Exec. VP Susan M. Newman, Sr VP/CFO/Sec/Treas. David J. Reed, ASLA; Senior. VP Matthew R. Houser, ASLA; Senior VP Robert E. Gustafson, PE; Senior VP Roger J. Wade, PE, PLS; Senior VP Albert H. Zimmerman, PE; VP Thomas Springer, AICP, CEP; Asst. VP 8a. NAME, TITLE, & TELEPHONE NUMBER - OTHER PRINCIPALS S. Michael Newton, PE, PLS; Regional Manager WV, Assistant VP Sherrill Smith, PE, PLS; Vice President David Heyne, AIA; Assistant Vice President						
9. PERSONNEL BY DISCIPLINE						
1 ADMINISTRATIVE	—	ECOLOGISTS	—	LANDSCAPE ARCHITECTS	—	STRUCTURAL ENGINEERS
— ARCHITECTS	—	ECONOMISTS	—	— MECHANICAL ENGINEERS	—	1 SURVEYORS
— BIOLOGIST	—	ELECTRICAL ENGINEERS	—	— MINING ENGINEERS	—	— TRAFFIC ENGINEERS
2 CADD OPERATORS	—	ENVIRONMENTALISTS	—	— PHOTOGRAMMETRISTS	—	— OTHER
— CHEMICAL ENGINEERS	—	ESTIMATORS	—	— PLANNERS: URBAN/REGIONAL	—	
1 CIVIL ENGINEERS	—	GEOLOGISTS	—	— SANITARY ENGINEERS	—	
— CONSTRUCTION INSPECTORS	—	HISTORIANS	—	— SOILS ENGINEERS	—	
— DESIGNERS	—	HYDROLOGISTS	—	— SPECIFICATION	—	TOTAL PERSONNEL
— DRAFTSMEN	—		—	— WRITERS	—	
TOTAL NUMBER OF WV REGISTERED PROFESSIONAL ENGINEERS IN PRIMARY OFFICE: <u>1</u>						
*RPEs other than Civil and Mining must provide supporting documentation that qualifies them to supervise and perform this type of work.						
10. HAS THIS JOINT-VENTURE WORKED TOGETHER BEFORE?      X YES      □ NO						

11. OUTSIDE KEY CONSULTANTS/SUB-CONSULTANTS ANTICIPATED TO BE USED. Attach "AML Consultant Confidential Qualification Questionnaire".

<p><b>NAME AND ADDRESS:</b>                  Novel Geo-Environmental, PLLC                  806 B Street                  St. Albans, WV 25177</p>	<p><b>SPECIALTY:</b>                  Soils Analysis / Geotechnical Engineering</p>	<p><b>WORKED WITH BEFORE</b>                  X Yes                  No</p>
<p><b>NAME AND ADDRESS:</b>                  Terradon Corporation                  401 Jacobson Drive                  Poca, WV 25159</p>	<p><b>SPECIALTY:</b>                  Surveying</p>	<p><b>WORKED WITH BEFORE</b>                  X Yes                  No</p>
<p><b>NAME AND ADDRESS:</b></p>	<p><b>SPECIALTY:</b></p>	<p><b>WORKED WITH BEFORE</b>                  Yes                  No</p>
<p><b>NAME AND ADDRESS:</b></p>	<p><b>SPECIALTY:</b></p>	<p><b>WORKED WITH BEFORE</b>                  Yes                  No</p>
<p><b>NAME AND ADDRESS:</b></p>	<p><b>SPECIALTY:</b></p>	<p><b>WORKED WITH BEFORE</b>                  Yes                  No</p>
<p><b>NAME AND ADDRESS:</b></p>	<p><b>SPECIALTY:</b></p>	<p><b>WORKED WITH BEFORE</b>                  Yes                  No</p>
<p><b>NAME AND ADDRESS:</b></p>	<p><b>SPECIALTY:</b></p>	<p><b>WORKED WITH BEFORE</b>                  Yes                  No</p>
<p><b>NAME AND ADDRESS:</b></p>	<p><b>SPECIALTY:</b></p>	<p><b>WORKED WITH BEFORE</b>                  Yes                  No</p>
<p><b>NAME AND ADDRESS:</b></p>	<p><b>SPECIALTY:</b></p>	<p><b>WORKED WITH BEFORE</b>                  Yes                  No</p>

12. A. Is your firm experienced in Abandoned Mine Lands Remediation/Mine Reclamation Engineering?

YES Description and Number of Projects: Glen Mine Air Shafts, DEP#14270; Delbarton (Dardi) Portals DEP#14524, Hazy Creek (Syrouse) Portals DEP#14947, Jonben Refuse Pile DEP#15184

NO

B. Is your firm experienced in Soil Analysis?

YES Description and Number of Projects: \_\_\_\_\_

NO

C. Is your firm experienced in hydrology and hydraulics?

YES Description and Number of Projects: The company has practiced civil engineering since 1974. Transportation and Site Development are primary areas of practice, all of which involve hydrology and hydraulics. Approximately 150-200 projects.

NO

D. Does your firm produce its own Aerial Photography and Develop Contour Mapping?

YES Description and Number of Projects: We use outside consultants for aerial photography, however we are able to develop contour mapping from digitized data.

NO

E. Is your firm experienced in domestic waterline design? (Include any experience your firm has in evaluation of aquifer degradation as a result of mining.)

YES Description and Number of Projects: Water system engineering is a primary area of practice involving source development, treatment, pumping, distribution and storage. Approximately 100 projects.

NO

F. Is your firm experienced in Acid Mine Drainage Evaluation and Abatement Design?

YES Description and Number of Projects: \_\_\_\_\_

NO



13. PERSONAL HISTORY STATEMENT OF PRINCIPALS AND ASSOCIATES RESPONSIBLE FOR AML PROJECT DESIGN (Furnish complete data - it keep to essentials)

NAME & TITLE (Last, First, Middle Int.) <b>Newton, Steven M., PE, PS Regional Office Manager - WV Assistant Vice President</b>	YEARS OF AML DESIGN EXPERIENCE: <b>2</b>	YEARS OF AML RELATED DESIGN EXPERIENCE: <b>33</b>	YEARS OF DOMESTIC WATERLINE DESIGN EXPERIENCE: <b>33</b>
---	---	--	---

Brief Explanation of Responsibilities

Overall project management and design, budget maintenance, QAVAC, and preparation of easement acquisition documents.

EDUCATION (Degree, Year, Specialization)  
**Speed Scientific School  
 University of Louisville, 1975-1980  
 Civil Engineering**

MEMBERSHIP IN PROFESSIONAL ORGANIZATIONS  
**ASCE, NSPE, WVACE, WVRWA**

REGISTRATION (Type, Year, State)  
**PE/1984/KY; PE/1985/IN; PE/1995/NC; PE/1995/PA; PE/2000/WV; PS/1983/KY;  
 PS/1990/TN; PS/1990/IL; PS/2000/WV**

13. PERSONAL HISTORY STATEMENT OF PRINCIPALS AND ASSOCIATES RESPONSIBLE FOR AML PROJECT DESIGN (Furnish complete data but keep to essentials)

NAME & TITLE (Last, First, Middle Int.)	YEARS OF AML DESIGN EXPERIENCE:	YEARS OF AML RELATED DESIGN EXPERIENCE:	YEARS OF DOMESTIC WATERLINE DESIGN EXPERIENCE:
---	---------------------------------	---	--

Brief Explanation of Responsibilities

EDUCATION (Degree, Year, Specialization)

MEMBERSHIP IN PROFESSIONAL ORGANIZATIONS

REGISTRATION (Type, Year, State)

14. PROJECT A LIST OF SOFTWARE AND EQUIPMENT AVAILABLE IN PRIMARY OFFICE WHICH WILL BE USED TO COMPLETE AMERICAN SERVICES

Software - AutoCAD Civil 3D - 2009

Equipment - 6 - Dell Desktop PC Computers

HP Designjet 1055 CM Plotter

HP Laserjet 5000N

HP Officejet 6500

Bentley MicroStation 8

Sharp AR-BC260 Digital Imager

Haestad Methods - Flowmaster

Wild NA20 Level

MS - Word (2003)

MS - Excel (2003)

Adobe Writer and Reader 8.0

MS - Power Point (2003)

Photoshop

MS - Access (2003)

15. CURRENT ACTIVITIES ON WHICH YOUR FIRM IS THE DESIGNATE ENGINEER OF RECORD

PROJECT NAME, TYPE AND LOCATION	NAME AND ADDRESS OF OWNER	NATURE OF YOUR FIRM'S RESPONSIBILITY	ESTIMATED CONSTRUCTION COST	PERCENT COMPLETE
Green Valley Extension Wastewater Extension Logan Co., WV	Buffalo Creek PSD P O Box 209 Amherstdale, WV 25607	Design Bidding Assistance Construction Administration Construction Inspection Post Construction	\$1,000,000	Preliminary 100% Design 0%
Paden City Wastewater Collection System - Rehab Project Tyler & Wetzel Counties, WV	City of Paden City P O Box 211 Paden City, WV 26159	Design Bidding Assistance Construction Administration Construction Inspection Post Construction	\$1,800,000	Design 100% Construction 0%
Waverly Wastewater Upgrade Wood & Pleasants Counties, WV	Union Williams PSD P O Box 243 Waverly, WV 26161	Design Bidding Assistance Construction Administration Construction Inspection Post Construction	\$730,000	Design 100% Construction 95%
Pleasants County Waterline Extension Pleasants Co., WV	Union Williams PSD P O Box 243 Waverly, WV 26161	Design Bidding Assistance Construction Administration Construction Inspection Post Construction	\$943,000	Design 100% Construction 95%
Fisher's Ford Bridge Renovation Morgan Co., WV	WVDPOT 1900 Kanawha Blvd., E. Charleston, WV 25305	Preliminary Report Preliminary Design Final Design Construction Administration	\$1.7 Million	Design 100%
Delbarton (Dardi) Portals Design Mingo Co., WV	WVDEP - AML 601 57 <sup>th</sup> Street, SE Charleston, WV 25304	Design Bidding Assistance Construction Administration	--	Design 100%
Hazy Creek (Sprouse) Portal Design Raleigh Co., WV	WVDEP - AML 601 57 <sup>th</sup> Street, SE Charleston, WV 25304	Design Bidding Assistance Construction Administration	--	Design 90%
Jonben Refuse Pile Design Raleigh Co., WV	WVDEP - AML 601 57 <sup>th</sup> Street, SE Charleston, WV 25304	Design Bidding Assistance Construction Administration	--	Design 50%

TOTAL NUMBER OF PROJECTS: 8 (this page)

TOTAL ESTIMATED CONSTRUCTION COSTS: \$6.2 MILLION (this page)

PROJECT NAME, TYPE AND LOCATION	NAME AND ADDRESS OF OWNER	NATURE OF YOUR FIRM'S RESPONSIBILITY	ESTIMATED CONSTRUCTION COST	PERCENT COMPLETE
TOTAL NUMBER OF PROJECTS: 0			TOTAL ESTIMATED CONSTRUCTION COSTS:	



17. COMPLETED WORK WITHIN LAST 5 YEARS ON WHICH YOUR FIRM	NAME AND ADDRESS OF OWNER	ESTIMATED CONSTRUCTION COST	YEAR	Pg 1 COMPLETED (YES OR NO)
WV Route 9 Relocate/Upgrade Jefferson & Berkeley Counties, WV	WVDOT 1900 Kanawha Blvd., E. Charleston, WV 25305	\$60.8 Million	2009	YES
Eleanor Sewer Reconstruction Putnam Co. WV	Town of Eleanor P.O. Box 185 401 Roosevelt Blvd. Eleanor, WV 25070	\$109,000	2009	YES
Glen White Air Shafts Abandoned Mine Reclaiming Co., WV	WVDEP Office of Abandoned Mine Lands and Reclamation 116 Industrial Drive Oak Hill, WV 25901	\$228,500	2009	YES
Jim / Bee Ridge Waterline Extension Putnam Co., WV	Putnam County Commission 3389 Winfield Road Winfield, WV 25213	\$1,600,000	2009	YES
Marble Drive Drainage Improvements Putnam Co., WV	Town of Eleanor P O Box 185 401 Roosevelt Blvd. Eleanor, WV 25070	\$13,000	2009	YES
Cobblestone Subdivision Section 3 Putnam Co., WV	Cobblestone Subdivision, LLC 500 Corporate Centre Drive Suite 550 Scott Depot, WV 25560	\$900,000	2009	YES
Vintroux Road/US Route 35 Sanitary Sewer System Extension Putnam Co., WV	Putnam PSD P O Box 860 Scott Depot, WV 25560	\$2.1 Million	2009	YES
Eleanor Plaza Sidewalk Extension Putnam Co., WV	Town of Eleanor P O Box 185 401 Roosevelt Blvd. Eleanor, WV 25070	\$35,000	2008	YES
Vintroux Waterline Replacement Putnam Co., WV	Putnam PSD P O Box 860 Scott Depot, WV 25560	\$420,000	2007	YES


17. COMPLETED WORK WITHIN LAST 5 YEARS ON WHICH YOUR FIRM		AS THE DESIGNATED ENGINEER OF RECORD			Pg 2
PROJECT NAME, TYPE AND LOCATION	NAME AND ADDRESS OF OWNER	ESTIMATED CONSTRUCTION COST	YEAR	CONSTRUCTED (YES OR NO)	(YES OR NO)
Northfork Waterline AML Study ID #308 McDowell Co., WV	WVDEP - AML 601 57 <sup>th</sup> Street, SE Charleston, WV 25304	N/A Study	2007		NO
Ivywood Street Drainage Plans Putnam Co., WV	Town of Eleanor P O Box 185 401 Roosevelt Blvd. Eleanor, WV 25070	--	2007		NO
Dr. Herman Site Plan Putnam Co., WV	Dr. Herman eye Center 3709 Teays Valley Rd. Hurricane, WV 25526	\$630,000	2007		YES
ICG Site Plan Putnam Co., WV	G & G Builders 500 Corporate Centre Drive Suite 550 Scott Depot, WV 25560	\$7,100,000	2006		YES
Eleanor Sidewalk Plans Putnam Co., WV	Town of Eleanor P O Box 185 401 Roosevelt Blvd. Eleanor, WV 25070	\$158,000	2006		YES
Cobblestone Subdivision Phases 1 and 2 Putnam Co., WV	Cobblestone Subdivision, LLC 500 Corporate Centre Drive Suite 550 Scott Depot, WV 25560	\$1,200,000	2005-2006		YES
Fruth Pharmacy Site Plan Kanawha Co., WV	G & G Builders 500 Corporate Centre Drive Suite 550 Scott Depot, WV 25560	\$900,000	2005		YES
Teays Valley Road (WV 33) Road Widening Putnam Co., WV	Putnam County Development Authority P O box 167 Scott Depot, WV 25560	\$150,000	2005		YES
Teays Valley Cinemas Site Plan Putnam Co., WV	G & G Builders 500 Corporate Centre Drive Suite 550 Scott Depot, WV 25560	\$3,500,000	2005		YES

18. COMPLETED WORK WITHIN LAST 5 YEARS ON WHICH YOUR FIRM HAS BEEN A SUB-CONSULTANT TO OTHER FIRMS (INDICATE PHASE OF WORK FOR WHICH YOUR FIRM WAS RESPONSIBLE)

PROJECT NAME, TYPE AND LOCATION	NAME AND ADDRESS OF OWNER	ESTIMATED CONSTRUCTION COST OF YOUR FIRM'S PORTION	YEAR	CONSTRUCTED (YES OR NO)	FIRM ASSOCIATED WITH
Gassaway Armory Addition & Renovations Braxton Co., WV	WVARNG	\$100,000	2009	YES	Jerry Goff Architecture 100 1st Ave. St. Albans, WV 25177

19. Use this space to provide any additional information or description of resources supporting your firm's qualifications to perform work for the West Virginia Abandoned Mine Lands Program.

20. The foregoing is a statement of facts.

Signature:  Title: Regional Office Manager Date: December 7, 2010

Printed Name: Steven M. Newton







**WEST VIRGINIA DEPARTMENT OF ENVIRONMENTAL PROTECTION  
AML CONSULTANT CONFIDENTIAL QUALIFICATION QUESTIONNAIRE**

Attachment : "B"

<p>PROJECT NAME: Various WVDEP Projects</p>	<p>DATE: February 23, 2010</p>	<p>FEIN: 52-2365940</p>						
<p>1. FIRM NAME: Novel Geo-Environmental, LLC</p>	<p>2. HOME OFFICE BUSINESS ADDRESS: 171 Montour Road Moon Township, PA 15108</p>							
<p>4. HOME OFFICE TELEPHONE:  (412) 722-1970</p>	<p>5. ESTABLISHED:  2002</p>	<p>6. TYPE OWNERSHIP  Limited Liability Corporation</p>						
<p>7. PRIMARY AML DESIGN OFFICE: ADDRESS/ TELEPHONE/ PERSON IN CHARGE/ NO. AML DESIGN PERSONNEL EACH OFFICE: 806 B Street St. Albans, WV 25177 304-201-5180</p>	<p>3. FORMER FIRM NAME:  NA</p> <p>6a. WV REGISTERED DBE:  YES</p>							
<p>8. NAMES OF PRINCIPAL OFFICERS OR MEMBERS OF FIRM: Amy L. Veltri - President John E. Nottingham - Vice President</p>	<p>8a. NAME, TITLE, &amp; TELEPHONE NUMBER - OTHER PRINCIPALS</p>							
<p>9. PERSONNEL BY DISCIPLINE (<b>Bold Lettering Indicates Minimum Design Team Members</b>)</p> <table style="width:100%; border: none;"> <tr> <td style="width:30%; vertical-align: top;"> <p><b>3 ADMINISTRATIVE</b> — ARCHITECTS — BIOLOGIST <b>1 CADD OPERATORS</b> — CHEMICAL ENGINEERS <b>2 CIVIL ENGINEERS</b> <b>5 CONSTRUCTION INSPECTORS</b> — DESIGNERS — DRAFTSMEN</p> </td> <td style="width:30%; vertical-align: top;"> <p>— ECOLOGISTS — ECONOMISTS — ELECTRICAL ENGINEERS <b>4 ENVIRONMENTALISTS</b> — ESTIMATORS <b>2 GEOLOGISTS</b> — HISTORIANS — HYDROLOGISTS</p> </td> <td style="width:30%; vertical-align: top;"> <p>— LANDSCAPE ARCHITECTS — MECHANICAL ENGINEERS — MINING ENGINEERS — PHOTOGRAMMETRISTS — PLANNERS: URBAN/REGIONAL — SANITARY ENGINEERS <b>3 SOILS ENGINEERS</b> — SPECIFICATION WRITERS</p> </td> </tr> <tr> <td style="vertical-align: top;"> <p>— STRUCTURAL ENGINEERS — SURVEYORS — TRAFFIC ENGINEERS <b>4 DRILLERS &amp; HELPERS</b> <b>5 OTHER PERSONNEL</b></p> </td> <td colspan="2" style="vertical-align: top;"> <p align="right"><b>25 TOTAL PERSONNEL</b></p> </td> </tr> </table>			<p><b>3 ADMINISTRATIVE</b> — ARCHITECTS — BIOLOGIST <b>1 CADD OPERATORS</b> — CHEMICAL ENGINEERS <b>2 CIVIL ENGINEERS</b> <b>5 CONSTRUCTION INSPECTORS</b> — DESIGNERS — DRAFTSMEN</p>	<p>— ECOLOGISTS — ECONOMISTS — ELECTRICAL ENGINEERS <b>4 ENVIRONMENTALISTS</b> — ESTIMATORS <b>2 GEOLOGISTS</b> — HISTORIANS — HYDROLOGISTS</p>	<p>— LANDSCAPE ARCHITECTS — MECHANICAL ENGINEERS — MINING ENGINEERS — PHOTOGRAMMETRISTS — PLANNERS: URBAN/REGIONAL — SANITARY ENGINEERS <b>3 SOILS ENGINEERS</b> — SPECIFICATION WRITERS</p>	<p>— STRUCTURAL ENGINEERS — SURVEYORS — TRAFFIC ENGINEERS <b>4 DRILLERS &amp; HELPERS</b> <b>5 OTHER PERSONNEL</b></p>	<p align="right"><b>25 TOTAL PERSONNEL</b></p>	
<p><b>3 ADMINISTRATIVE</b> — ARCHITECTS — BIOLOGIST <b>1 CADD OPERATORS</b> — CHEMICAL ENGINEERS <b>2 CIVIL ENGINEERS</b> <b>5 CONSTRUCTION INSPECTORS</b> — DESIGNERS — DRAFTSMEN</p>	<p>— ECOLOGISTS — ECONOMISTS — ELECTRICAL ENGINEERS <b>4 ENVIRONMENTALISTS</b> — ESTIMATORS <b>2 GEOLOGISTS</b> — HISTORIANS — HYDROLOGISTS</p>	<p>— LANDSCAPE ARCHITECTS — MECHANICAL ENGINEERS — MINING ENGINEERS — PHOTOGRAMMETRISTS — PLANNERS: URBAN/REGIONAL — SANITARY ENGINEERS <b>3 SOILS ENGINEERS</b> — SPECIFICATION WRITERS</p>						
<p>— STRUCTURAL ENGINEERS — SURVEYORS — TRAFFIC ENGINEERS <b>4 DRILLERS &amp; HELPERS</b> <b>5 OTHER PERSONNEL</b></p>	<p align="right"><b>25 TOTAL PERSONNEL</b></p>							
<p><b>TOTAL NUMBER OF WV REGISTERED PROFESSIONAL ENGINEERS IN PRIMARY OFFICE: 3</b> *RPEs other than Civil and Mining must provide supporting documentation that qualifies them to supervise and perform this type of work.</p>								
<p>10. HAS THIS JOINT-VENTURE WORKED TOGETHER BEFORE? YES</p>								

11. OUTSIDE KEY CONSULTANTS/SUB-CONSULTANTS ANTICIPATED TO BE USED. Attach "AML Consultant Confidential Qualification Questionnaire" for each if copy is not on file with AML

NAME AND ADDRESS:	SPECIALTY:	WORKED WITH BEFORE Yes _____ No _____
NAME AND ADDRESS:	SPECIALTY:	WORKED WITH BEFORE Yes _____ No _____
NAME AND ADDRESS:	SPECIALTY:	WORKED WITH BEFORE Yes _____ No _____
NAME AND ADDRESS:	SPECIALTY:	WORKED WITH BEFORE Yes _____ No _____
NAME AND ADDRESS:	SPECIALTY:	WORKED WITH BEFORE Yes _____ No _____
NAME AND ADDRESS:	SPECIALTY:	WORKED WITH BEFORE Yes _____ No _____
NAME AND ADDRESS:	SPECIALTY:	WORKED WITH BEFORE Yes _____ No _____
NAME AND ADDRESS:	SPECIALTY:	WORKED WITH BEFORE Yes _____ No _____
NAME AND ADDRESS:	SPECIALTY:	WORKED WITH BEFORE Yes _____ No _____

12. A. Is your firm experienced in Abandoned Mine Land Remediation/Mine Reclamation Engineering?

NO: Note that Novel Geo-Environmental (NGE) has not performed any AML design work to date, but our WV Office Manager (John E. Nottingham) and project geologist (Chuck Montgomery) have extensive AML experience with their former firm. Additionally, NGE currently holds a contract with WVDEP-AML for geotechnical drilling for the northern district of WV and has completed several drilling projects under this contract.

B. Is your firm experienced in Soil Analysis?

YES: NGE specializes in Geotechnical Engineering including foundation investigations, subsurface investigations, cut slope design, fill embankment analysis and design, slope stability analysis, landslide analysis and corrective design, mine subsidence investigations, geologic studies, groundwater seepage analysis, foundation design, retaining wall design, pavement design, subsurface drilling and monitoring well installation. NGE has performed a total of several hundred geotechnical engineering related projects since the company was formed in 2002.

C. Is your firm experienced in hydrology and hydraulics?

NO: While our firm has not performed any hydrology/hydraulics projects to date, our personnel have experience with former employers.

D. Does your firm produce its own Aerial Photography and Develop Contour Mapping?

NO

E. Is your firm experienced in domestic waterline design? (Include any experience your firm has in evaluation of aquifer degradation as a result of mining.)

NO

F. Is your firm experienced in Acid Mine Drainage Evaluation and Abatement Design?

NO

13. PERSONAL HISTORY STATEMENT OF PRINCIPALS AND ASSOCIATES RESPONSIBLE FOR AML PROJECT DESIGN (Furnish complete data but keep to essentials)

NAME & TITLE (Last, First, Middle Int.)		YEARS OF EXPERIENCE	
YEARS OF AML DESIGN EXPERIENCE:	YEARS OF AML RELATED DESIGN EXPERIENCE:	YEARS OF DOMESTIC WATERLINE DESIGN EXPERIENCE:	YEARS OF DOMESTIC WATERLINE DESIGN EXPERIENCE:
Nottingham, John, E. Principal Engineer, Vice President	14	6	0
<p>Brief Explanation of Responsibilities</p> <p>Mr. Nottingham was responsible for supervising field and design work for numerous AML related landslide abatement projects for the WVDEP while under the employment of Triad Engineering, Inc. In addition to landslide abatement projects, Mr. Nottingham was involved in subsidence determination investigations and subsidence abatement projects. Mr. Nottingham worked extensively on "emergency" projects which required quick field investigations and corrective designs.</p>			
<p>EDUCATION (Degree, Year, Specialization)</p> <p>Bachelor of Science in Civil Engineering, 1987, WVU, Specialization - Civil and Geotechnical Engineering Masters of Science in Civil Engineering, 1995, WVU, Specialization - Geotechnical Engineering</p>			
<p>MEMBERSHIP IN PROFESSIONAL ORGANIZATIONS</p> <p>American Society of Civil Engineering (ASCE) West Virginia Chapter of AIA</p>			
<p>13. PERSONAL HISTORY STATEMENT OF PRINCIPALS AND ASSOCIATES RESPONSIBLE FOR AML PROJECT DESIGN (Furnish complete data but keep to essentials)</p>			
NAME & TITLE (Last, First, Middle Int.)		YEARS OF EXPERIENCE	
YEARS OF AML DESIGN EXPERIENCE:	YEARS OF AML RELATED DESIGN EXPERIENCE:	YEARS OF DOMESTIC WATERLINE DESIGN EXPERIENCE:	YEARS OF DOMESTIC WATERLINE DESIGN EXPERIENCE:
Montgomery, Charles, E. Project Manager	12	6	0
<p>Brief Explanation of Responsibilities</p> <p>Mr. Montgomery was responsible for coordinating field activities for AML landslide abatement projects for the WVDEP while employed with Triad Engineering, Inc. Mr. Montgomery has also participated in all project phases for other AML work involving subsidence determinations/abatement and impounded mine pools.</p>			
<p>EDUCATION (Degree, Year, Specialization)</p> <p>Bachelor of Science, Geology, 1991, Marshall University</p>			
<p>MEMBERSHIP IN PROFESSIONAL ORGANIZATIONS</p> <p>Association of Engineering Geologists Geological Society of America</p>			
<p>REGISTRATION (Type, Year, State)</p> <p>Professional Geologist, 1999, Kentucky</p>			

13. PERSONAL HISTORY STATEMENT OF PRINCIPALS AND ASSOCIATES RESPONSIBLE FOR AML PROJECT DESIGN (Furnish complete data; it keep to essentials)

NAME & TITLE (Last, First, Middle Int.) Nottingham, Larry C. Senior Engineer	YEARS OF AML DESIGN EXPERIENCE: 17	YEARS OF AML RELATED DESIGN EXPERIENCE: 7	YEARS OF DOMESTIC WATERLINE DESIGN EXPERIENCE: 0
--	---------------------------------------	--	---

Brief Explanation of Responsibilities

Dr. Nottingham planned and supervised several AML investigation and reclamation projects for WVDEP while employed by Triad Engineering. Projects included burning refuse pile investigations, unstable refuse pile investigations and remedial designs, landslide investigations and remedial designs, subsidence investigations, and underground mine fire investigations.

EDUCATION (Degree, Year, Specialization)

Bachelor of Science in Civil Engineering, 1965, Civil Engineering, West Virginia Institute of Technology  
 Master of Science in Civil Engineering, 1966, Geotechnical Engineering, University of Pittsburgh  
 Doctor of Philosophy, 1975, Geotechnical Engineering, University of Florida

MEMBERSHIP IN PROFESSIONAL ORGANIZATIONS

Member, American Society of Civil Engineers  
 Member, National Society of Professional Engineers

REGISTRATION (Type, Year, State)  
 Professional Engineer, 1969, WV  
 Professional Engineer, 1985, KY  
 Professional Engineer, 1985, OH  
 Professional Engineer, 2006, PA

13. PERSONAL HISTORY STATEMENT OF PRINCIPALS AND ASSOCIATES RESPONSIBLE FOR AML PROJECT DESIGN (Furnish complete data but keep to essentials)

NAME & TITLE (Last, First, Middle Int.) Christopher Dunlap Engineering Technician	YEARS OF AML DESIGN EXPERIENCE: 0	YEARS OF AML RELATED DESIGN EXPERIENCE: 0	YEARS OF DOMESTIC WATERLINE DESIGN EXPERIENCE: 0
---	--------------------------------------	--	---

Brief Explanation of Responsibilities

Mr. Dunlap has served as an engineering technician/field inspector on numerous government and commercial construction projects. His duties on these projects have included quality assurance/quality control (QA/QC), construction oversight and testing, coordination of field activities, liaison between general contractor and engineer, and project reporting.

EDUCATION (Degree, Year, Specialization): A.S., Mechanical Engineering Technology, WVUIT; American Concrete Institute (ACI) Certified; WVDOH Certification for Fill Compaction Technician; WVDOH Certification for Concrete Technician; WVDOH Certification for Asphalt Inspector.

MEMBERSHIP IN PROFESSIONAL ORGANIZATIONS: NA

REGISTRATION (Type, Year, State): NA

14. PROVIDED A LIST OF SOFTWARE AND EQUIPMENT AVAILABLE IN PRIMARY OFFICE WHICH WILL BE USED TO COMPLETE AM DESIGN SERVICES

Three rotary drill rigs, one mounted on a four wheel drive one-ton truck, and two track-mounted rigs. Drills are equipped with hollow stem augers, split-spoon soil sampling equipment, and rock coring tools.  
Portable dynamic cone penetrometer.

Electric concrete coring drill.

Two equipment hauling trailers.

Software includes: Word processing, PCSTABL - Slope Stability Analysis, LPILE Plus 4.0 - Pile Foundation Analysis, PYWALL 2.0 - Retaining Wall Analysis, ReSSA 2.0 - Reinforced Soil Slope Analysis, ResSlope 3.0 - Reinforced Soil Slope Design

Soil Laboratory Equipment: Soil Oven, Scales, Sieves, Liquid and Plastic Limits Machine



15. CURRENT ACTIVITIES ON WHICH YOUR FIRM IS THE DESIGNATED ENGINEER OF RECORD

PROJECT NAME, TYPE AND LOCATION	NAME AND ADDRESS OF OWNER	NATURE OF YOUR FIRM'S RESPONSIBILITY	ESTIMATED CONSTRUCTION COST	PERCENT COMPLETE
Flatwoods Retaining Wall - Pile retaining wall design Flatwoods, WV	Go-Mart, Inc.	Perform subsurface investigation, develop design for retaining wall construction.	\$1,300,000.00	90
Annual Geotechnical Drilling Contract, Northern West Virginia	West Virginia Department of Environmental Protection	Perform geotechnical (drilling) investigations of abandoned mine land sites as directed by WVDEP/AML personnel.	Unknown	30
TOTAL NUMBER OF PROJECTS: 2			TOTAL ESTIMATED CONSTRUCTION COSTS: \$ Unknown	

16. CURRENT ACTIVITIES ON WHICH YOUR FIRM IS SERVING AS A CONSULTANT TO OTHERS

PROJECT NAME, TYPE AND LOCATION	NATURE OF FIRMS RESPONSIBILITY	NAME AND ADDRESS OF OWNER	ESTIMATED COMPLETION DATE	ESTIMATED CONSTRUCTION COST	
				ENTIRE PROJECT	YOUR FIRMS RESPONSIBILITY
Edwight Truss Bridge Geotechnical Investigation Raleigh County, WV	Perform subsurface investigation, provide foundation design recommendations.	West Virginia Dept. of Highways, Charleston, WV	Unknown	Unknown	Fee \$17,000
Turkey Creek Bridge, CSL Testing Wayne County, WV	Perform Cross-Hole Sonic Logging of New Foundation Drilled Piers	West Virginia Dept. of Highways, Charleston, WV	March, 2010	Unknown	Fee \$3,800
Steel of West Virginia Subsurface Investigation Huntington, WV	Advance test borings	Toyota Corp. Buffalo, WV	March, 2008	Unknown	Fee \$3,100
Marlowe Overpass Bridge, Geotechnical Investigation Marlowe, WV	Perform subsurface investigation, provide foundation design recommendations.	West Virginia Dept. of Highways, Charleston, WV	Unknown	Unknown	Fee \$20,000
Cabell Co. EMS Station, Geotechnical Investigation, Milton, WV	Determine Site Subsurface Conditions, Provide Foundation Design Recommendations	Cabell Co. EMS Clarksburg, WV	February, 2008	Unknown	Fee \$3,500
Thomas Cell Tower Site, Foundation Investigation Thomas, WV	Perform subsurface investigation, provide foundation design recommendations.	U.S. Cellular	Unknown	Unknown	Fee \$3,000
Patel Residence Foundation Investigation Charleston, WV	Perform subsurface investigation, provide foundation design recommendations.	Thakor Patel Charleston, WV	Unknown	Unknown	Fee \$2,000



18. C		LETTED WORK WITHIN LAST 5 YEARS ON WHICH YOUR FIRM WAS RESPONSIBLE				AS BEEN A SUB-CONSULTANT TO OTHER FIRMS (INDICATE)		ASE
PROJECT NAME, TYPE AND LOCATION	NAME AND ADDRESS OF OWNER	ESTIMATED CONSTRUCTION COST OF YOUR FIRM'S PORTION	YEAR	CONSTRUCTED (YES OR NO)	FIRM ASSOCIATED WITH			
S. Mineral Wells Interchange, Geotechnical Study, Mineral Wells, WV	WV Department of Highways Charleston, WV	\$5,000,000	2007	In Process	L. A. Gates Co.			
Scary Creek Bridge Replacement Geotechnical Investigation St. Albans, WV	WV Department of Highways Charleston, WV	\$2,000,000	2009	No	HNTB Corporation			
Performing Arts Center. Geotechnical Investigation, Buckhannon, WV	West Virginia Wesleyan College, Buckhannon, WV	\$500,000	2007	Yes	R. D. Zande & Associates, Inc.			
Fishers Ford Bridge Geotechnical Investigation Morgan County, WV	WV Department of Highways Charleston, WV	\$2,000,000	2009	No	Qk4			
Water Tanks, Geotechnical Investigation, Iaeger, WV	Iaeger PSD Iaeger, WV	\$100,000	2006	Yes	Stafford Consultants			
Leon Thru Girder Bridge Geotechnical Investigation Leon, WV	WV Department of Highways Charleston, WV	\$2,500,000	2009	NO	Buchart Horn, Inc.			

19. Use this space to provide any additional information or description of resources supporting your firm's qualifications to perform work for the West Virginia Abandoned Mine Lands Program.

20. The foregoing is a statement of facts.

Signature: John E. Nottingham Title: Vice President

Printed Name: John E. Nottingham

Date: March 5, 2010

WEST VIRGINIA DEPARTMENT OF ENVIRONMENTAL PROTECTION  
 AML CONSULTANT QUALIFICATION QUESTIONNAIRE Attachment "B"

PROJECT NAME  
 Various WVDEP Projects

DATE (DAY, MONTH, YEAR)  
 03/09/2010

FEIN  
 55-0687626

1. FIRM NAME  
 TERRADON Corporation

2. HOME OFFICE BUSINESS ADDRESS  
 401 Jacobson Drive, Poca, WV, 25159

3. FORMER FIRM NAME

4. HOME OFFICE TELEPHONE  
 (304) 755-8291

5. ESTABLISHED (YEAR)  
 1989

6. TYPE OWNERSHIP  
 Individual  Corporation  
 Partnership Joint-Venture YES  NO

6a. WV REGISTERED DBE  
 (Disadvantaged Business Enterprise)  
 YES  NO

7. PRIMARY AML DESIGN OFFICE: ADDRESS/ TELEPHONE/ PERSON IN CHARGE/ NO. AML DESIGN PERSONNEL EACH OFFICE  
 401 Jacobson Drive, Poca, WV 25159 / (304)-755-8291 / Thomas Y. Kittredge, President / 38 persons

8. NAMES OF PRINCIPAL OFFICERS OR MEMBERS OF FIRM  
 Thomas Y Kittredge, President  
 Virginia L. King, CFO

8a. NAME, TITLE, & TELEPHONE NUMBER - OTHER PRINCIPALS  
 Timothy T White, P.E., Principal Engineer

9. PERSONNEL BY DISCIPLINE

5	ADMINISTRATIVE	—	4	LANDSCAPE ARCHITECTS	1	STRUCTURAL ENGINEERS
—	ARCHITECTS	—	—	MECHANICAL ENGINEERS	8	SURVEYORS
—	BIOLOGIST	—	—	MINING ENGINEERS	—	TRAFFIC ENGINEERS
4	CADD OPERATORS	1	—	PHOTOGRAMMETRISTS	—	OTHER
—	CHEMICAL ENGINEERS	—	—	PLANNERS: URBAN/REGIONAL	—	
6	CIVIL ENGINEERS	1	—	SANITARY ENGINEERS	—	
2	CONSTRUCTION INSPECTORS	—	1	SOILS ENGINEERS	—	
5	DESIGNERS	—	—	SPECIFICATION WRITERS	—	
—	DRAFTSMEN	—	—		—	38
						TOTAL PERSONNEL

TOTAL NUMBER OF WV REGISTERED PROFESSIONAL ENGINEERS IN PRIMARY OFFICE: 6  
 \*FPES other than Civil and Mining must provide supporting documentation that qualifies them to supervise and perform this type of work.

10. HAS THIS JOINT-VENTURE WORKED TOGETHER BEFORE?  YES  NO

11. OUTSIDE KEY CONSULTANTS/SUB-CONSULTANTS ANTICIPATED TO BE USED. Attach "AML Consultant Qualification Questionnaire".

<p>NAME AND ADDRESS:</p>		<p>WORKED WITH BEFORE</p> <p>____ Yes ____ No</p>
<p>NAME AND ADDRESS:</p>		<p>WORKED WITH BEFORE</p> <p>____ Yes ____ No</p>
<p>NAME AND ADDRESS:</p>		<p>WORKED WITH BEFORE</p> <p>____ Yes ____ No</p>
<p>NAME AND ADDRESS:</p>	<p>SPECIALTY:</p>	<p>WORKED WITH BEFORE</p> <p>____ Yes ____ No</p>
<p>NAME AND ADDRESS:</p>	<p>SPECIALTY:</p>	<p>WORKED WITH BEFORE</p> <p>____ Yes ____ No</p>
<p>NAME AND ADDRESS:</p>	<p>SPECIALTY:</p>	<p>WORKED WITH BEFORE</p> <p>____ Yes ____ No</p>
<p>NAME AND ADDRESS:</p>	<p>SPECIALTY:</p>	<p>WORKED WITH BEFORE</p> <p>____ Yes ____ No</p>
<p>NAME AND ADDRESS:</p>	<p>SPECIALTY:</p>	<p>WORKED WITH BEFORE</p> <p>____ Yes ____ No</p>
<p>NAME AND ADDRESS:</p>	<p>SPECIALTY:</p>	<p>WORKED WITH BEFORE</p> <p>____ Yes ____ No</p>

12. A. Is your firm experienced in Abandoned Mine Lands Remediation/Mine Reclamation Engineering?

**YES** Description and Number of Projects: **45 Projects for WVDEP/AML&R**

**NO**

B. Is your firm experienced in Soil Analysis?

**YES** Description and Number of Projects: **32 WVDEP/AML&R projects included some soil analysis. TERRADON provides geotechnical engineering on a wide variety of projects including dams, highways, bridges, etc.**

**NO**

C. Is your firm experienced in hydrology and hydraulics?

**YES** Description and Number of Projects: **35 WVDEP/AML&R projects included hydrology and hydraulics.**

**NO**

D. Does your firm produce its own Aerial Photography and Develop Contour Mapping?

**YES** Description and Number of Projects:

**NO** We routinely provide photo control surveys and field edit the mapping provided.

E. Is your firm experienced in domestic waterline design? (Include any experience your firm has in evaluation of aquifer degradation as a result of mining.)

**YES** Description and Number of Projects: **9 WVDEP/AML&R projects included the evaluation of aquifer degradation as a result of mining. Four of those projects have been designed and constructed. TERRADON has also designed hundreds of miles of waterline in the last 5 years.**

**NO**

F. Is your firm experienced in Acid Mine Drainage Evaluation and Abatement Design?

**YES** Description and Number of Projects: **5 WVDEP/AML&R projects included acid mine drainage evaluation and abatement. In addition, TERRADON was 1 of only 2 firms evaluating and designing AMD abatement of special reclamation projects in 1992, 1993 and 1994.**

**NO**

13. PERSONAL HISTORY STATEMENT OF PRINCIPALS AND ASSOCIATES RESPONSIBLE FOR AML PROJECT DESIGN (Furnish complete data to keep to essentials)

NAME & TITLE (Last, First, Middle Int.)

**James, John W., P.E.**

**Senior Geotechnical Engineer**

YEARS OF AML DESIGN EXPERIENCE:

**9**

YEARS OF EXPERIENCE

YEARS OF AML RELATED DESIGN EXPERIENCE:

**31**

YEARS OF DOMESTIC WATERLINE DESIGN EXPERIENCE:

**8**

Brief Explanation of Responsibilities

**Geotechnical Project Manager for TERRADON Corporation. Responsible for contract administration and project management; peer review of design, construction drawings and specifications; constructability review and construction cost estimate.**

EDUCATION (Degree, Year, Specialization)

**B.S., 1968, Civil Engineering**

MEMBERSHIP IN PROFESSIONAL ORGANIZATIONS

**American Society of Civil Engineers (Past President, WV Section)**

REGISTRATION (Type, Year, State)

**P.E., 1973, WV**

13. PERSONAL HISTORY STATEMENT OF PRINCIPALS AND ASSOCIATES RESPONSIBLE FOR AML PROJECT DESIGN (Furnish complete data but keep to essentials)

NAME & TITLE (Last, First, Middle Int.)

**White, Timothy T., P.E.**

**Project Manager, Principal Civil Engineer**

YEARS OF AML DESIGN EXPERIENCE:

**4**

YEARS OF EXPERIENCE

YEARS OF AML RELATED DESIGN EXPERIENCE:

**15**

YEARS OF DOMESTIC WATERLINE DESIGN EXPERIENCE:

**1**

Brief Explanation of Responsibilities

**Project Manager responsible for resource management to assure project schedule and cost. Engineer responsible for grading, hydraulic design, erosion and sediment control, natural stream channel assessment and design.**

EDUCATION (Degree, Year, Specialization)

**B.S., 1992, Civil Engineering**

MEMBERSHIP IN PROFESSIONAL ORGANIZATIONS

**American Society of Civil Engineers**

**American Council of Engineering Companies**

REGISTRATION (Type, Year, State)

**P.E., 1999, OH; P.E., 1999, WV; P.E., 2007, VA; P.E., 2008, MD; P.E., 2008, PA; P.E., 2001, AR; P.E., 2003, TX; P.E., 2008, TN; P.E., 2001, KY**



13. PERSONAL HISTORY STATEMENT OF PRINCIPALS AND ASSOCIATES RESPONSIBLE FOR AML PROJECT DESIGN (Furnish complete data to keep to essentials)

NAME & TITLE (Last, First, Middle Int.) <b>White, William G., P.E. Senior Structural Engineer</b>	YEARS OF AML DESIGN EXPERIENCE: <b>4</b>	YEARS OF AML RELATED DESIGN EXPERIENCE: <b>19</b>	YEARS OF DOMESTIC WATERLINE DESIGN EXPERIENCE: <b>0</b>
--	---	--	--

Brief Explanation of Responsibilities  
**Senior engineer responsible for structural analysis, design engineering, field investigation, specification writing, engineer's cost estimate, prebid and preconstruction meetings. Has experience in grading of refuse, mine seals, and pile and lagging walls.**

EDUCATION (Degree, Year, Specialization)  
**B.S., 1987, Civil Engineering**

MEMBERSHIP IN PROFESSIONAL ORGANIZATIONS  
**American Society of Civil Engineers  
American Council of Engineering Companies**

REGISTRATION (Type, Year, State)  
**P.E., 1997, WV; P.E., 1996, OH; P.E., 1999, VA; P.E., 2000, FL; P.E., 2000, NC; P.E., 2000, AR; P.E., 2001, KY**

13. PERSONAL HISTORY STATEMENT OF PRINCIPALS AND ASSOCIATES RESPONSIBLE FOR AML PROJECT DESIGN (Furnish complete data but keep to essentials)

NAME & TITLE (Last, First, Middle Int.) <b>Brown, David A., P.S. Professional Surveyor</b>	YEARS OF AML DESIGN EXPERIENCE: <b>7</b>	YEARS OF AML RELATED DESIGN EXPERIENCE: <b>13</b>	YEARS OF DOMESTIC WATERLINE DESIGN EXPERIENCE: <b>6</b>
---	---	--	--

Brief Explanation of Responsibilities  
**Responsible for all aspects of surveying including photogrammetry control, if required, field editing of mapping, topographic mapping, establishment of survey control monuments and establishing base lines for construction layout and quantity measurement. Also, tax map overlays and detailed property clarifications.**

EDUCATION (Degree, Year, Specialization)  
**B.S., 1996, Engineering Technology**

MEMBERSHIP IN PROFESSIONAL ORGANIZATIONS  
**West Virginia Association of Land Surveyors**

REGISTRATION (Type, Year, State)  
**P.S. 2003, WV; P.S. 2008, TN**

13. PERSONAL HISTORY STATEMENT OF PRINCIPALS AND ASSOCIATES RESPONSIBLE FOR AML PROJECT DESIGN (Furnish complete data but keep to essentials)

NAME & TITLE (Last, First, Middle Int.)

**Thaw, Robert, P.S.  
Professional Surveyor**

YEARS OF AML DESIGN EXPERIENCE:

**20**

YEARS OF EXPERIENCE

YEARS OF AML RELATED DESIGN EXPERIENCE:

**20**

YEARS OF DOMESTIC WATERLINE DESIGN EXPERIENCE: **15**

Brief Explanation of Responsibilities

**Survey Department Head, responsible for organizing and supervising survey crews, designs commercial sites for drainage, building site locations, parking and utility easements, reviews project plans and creates base mapping.**

EDUCATION (Degree, Year, Specialization)

**B.A., 1981, Survey Technology  
B.S., 1985, Surveying**

MEMBERSHIP IN PROFESSIONAL ORGANIZATIONS

**West Virginia Association of Land Surveyors**

REGISTRATION (Type, Year, State)

**P.S., 1985, West Virginia**

Software

Autodesk 2010 Civil 3D

SedCad 4 - Erosion Control and Hydrology Software

Haested Method Flowmaster Software for Channel Design

Haested Methods - Water CADD (Pipe Network Analysis)

Slope Stability -

PC Stable

REAME

SBSLOPE

WinStable and WinStable 2003

Piling Walls, Anchors and Reinforced Earth Walls -

Lpile

HeiCAP

Anchor 400

KeyWall 2004

TR 55, TR 20, TR 66 (Sites) - Hydrology

Hec-1, Hec HMS 2.22, Hec R As 3.1.2 - Hydrology

LC 58 + RP 61 - Structural (wall)

Microstation V8

Surveying Equipment

Trimble 4700 modular, RTK Global Positioning Total Station

Trimble Geomatics Office Software

Topcon Total Stations (3)

SMI Data Collectors (3)

Printing/Plotting/Reproduction

HP DesignJet T1120

HP DesignJet 1050C Plotter (2)

HP LaserJet 8000 Printer (2)

HP Color LaserJet 3700

HP Color LaserJet 5500

Sharp AR-550 Copier/Printer (2)

Sharp AR-C150 Full Color Copier/Printer

Océ 7056 Engineering Size Copier

15. PRESENT ACTIVITIES ON WHICH YOU ARE THE DESIGNATED ENGINEER OF RECORD

PROJECT NAME, TYPE AND LOCATION	NAME AND ADDRESS OF OWNER	ESTIMATED CONSTRUCTION COST	PERCENT COMPLETE
Garden Ground Highwalls AML Reclamation Design Fayette County, West Virginia	WVDEP/AML&R 601 57 <sup>TH</sup> Street SE Charleston WV 25304	\$10,000,000	5%
City Beer Bridge on I-77 Bridge Replacement Project Wood County, West Virginia	WVDOT Building 5, Room A-110 1900 Kanawha Blvd. East Charleston WV 25305	\$6,000,000	0%
Venus (Hamilton) Drainage AML Reclamation Design McDowell County, West Virginia	WVDEP/AML&R 601 57 <sup>TH</sup> Street SE Charleston WV 25304	\$200,000	90%
Drews Creek Highwall AML Reclamation Design Raleigh County, West Virginia	WVDEP/AML&R 601 57 <sup>TH</sup> Street SE Charleston WV 25304	\$500,000	90%
Manila Ridge Water Extensions Putman County, West Virginia	Putman County Commission 3389 Winfield Road Winfield, WV 25213-9370	\$1,500,000	75%
Boys Scouts of America Jamboree Site Fayette County, West Virginia	Trinity Works 2128 Mistletoe Boulevard Fort Worth, Texas 76110	\$100,000,000	10%
Sanitary Landfill Expansion Design, West Virginia	Confidential Client	\$25,000,000	90%

Continued on next page

15. PRESENT ACTIVITIES ON WHICH YOU ARE THE DESIGNATED ENGINEER OF RECORD

PROJECT NAME, TYPE AND LOCATION	NAME AND ADDRESS OF OWNER	ESTIMATED CONSTRUCTION COST	PERCENT COMPLETE
Sarah Ann (Vance) Drainage Logan County, West Virginia	WVDEP/AML&R 601 57 <sup>TH</sup> Street SE Charleston WV 25304	\$600,000	90%
Greenbrier County Schools 5 various school projects in Greenbrier County, West Virginia	Greenbrier County Schools 202 Chestnut Street Lewisburg, WV 24901	\$50,000,000	80%
Little Beaver State Park Campground Design, Beaver, West Virginia	WV DNR, Parks Section 1900 Kanawha Blvd. East Capitol Complex, Bldg. #3 Charleston, WV 25305	\$1,000,000	80%
NAPA Headquarters Pavement Design/Geotech Nitro, West Virginia	Genuine Parts LLC 2999 Circle 75 Parkway Atlanta, Georgia 30399	\$200,000	50%
Tucker County Landfill Expansion Design of Cell 7 Thomas, West Virginia	Tucker County Solid Waste Authority PO Box 58 Thomas WV 26292	\$15,000,000	90%
Cabell County Water Extensions Cabell County, West Virginia	Salt Rock Sewer PSD 100 Padero Dr Ona, WV 25545-9527	\$1,500,000	90%
Various Survey Projects Throughout West Virginia	Various Clients	\$3,000,000	50%

Continued on next page

15. PRESENT ACTIVITIES ON WHICH YOU ARE THE DESIGNATED ENGINEER OF RECORD

PROJECT NAME, TYPE AND LOCATION	NAME AND ADDRESS OF OWNER	ESTIMATED CONSTRUCTION COST	PERCENT COMPLETE
Fairmont Water Park Fairmont, West Virginia	City Fairmont 200 Jackson Street Fairmont, West Virginia 26554	\$3,000,000	90%
Relocate CR 18, Eccles, Raleigh County, West Virginia	WVDDOT Building 5, Room A-110 1900 Kanawha Blvd. East Charleston WV 25305	\$2,000,000	90%
Sleeths Run Bridge CR119/1 Lewis County West, Virginia	WVDDOT Building 5, Room A-110 1900 Kanawha Blvd. East Charleston WV 25305	\$2,000,000	99%
Charleston Replacement Housing Site/Civil for CRH 1-5 Charleston, West Virginia	Alan Ives Construction 10 South La Salle Street, Suite 3440 Chicago, Illinois 60603	\$20,000,000	90%
Tucker County Landfill Tucker County, West Virginia	Tucker County Solid Waste Authority	\$3,000,000	60%
TOTAL NUMBER OF PROJECTS: 19		TOTAL ESTIMATED CONSTRUCTION COSTS: \$244,500,000	

16. CURRENT ACTIVITIES ON WHICH YOUR FIRM IS SERVING AS A SUB-CONSULTANT TO OTHERS

PROJECT NAME, TYPE AND LOCATION	NATURE OF FIRMS RESPONSIBILITY	NAME AND ADDRESS OF OWNER	ESTIMATED COMPLETION DATE	ESTIMATED CONSTRUCTION COST	
				ENTIRE PROJECT	YOUR FIRMS RESPONSIBILITY
Mingo Central High Sch Mingo County, West Virginia	Civil, Site Design, Surveying	Mingo County BOE Sycamore Street Williamson, WV 25661	2011	\$20,000,000	15%
Shepherdstown Elementary Shepherdstown, West Virginia	Civil, Site Design, Surveying	Jefferson County BOE 110 Mordington Avenue, Charles Town, WV 25414	2010	\$15,000,000	15%
Braxton County Schools Six Various School Projects, Braxton County, West Virginia	Civil, Site Design, Surveying	Braxton County BOE 411 N Hill Road, Sutton, WV 26601	2010	\$12,000,000	15%
State Office Building, Fairmont, West Virginia	Civil, Site Design, Surveying,	WV Dept. of Admin. Bldg. 1, Rm. E119 State Capitol Complex Charleston, WV 25305	2010	\$15,000,000	15%
Poca Middle School Poca, West Virginia	Civil, Site Design, Surveying,	Putnam County BOE Courthouse Drive Winfield, WV 25213	2010	\$20,000,000	15%
Confidence Elementary School Putnam County, West Virginia	Civil, Site Design, Surveying,	Putnam County BOE Courthouse Drive Winfield, WV 25213	2010	\$8,000,000	15%
Winfield Middle School Winfield, West Virginia	Civil, Site Design, Surveying,	Putnam County BOE Courthouse Drive Winfield, WV 25213	2010	\$22,000,000	15%

Continued on next page

16. CURRENT ACTIVITIES ON WHICH YOUR FIRM IS SERVING AS A SUB-CONSULTANT TO OTHERS

PROJECT NAME, TYPE AND LOCATION	NATURE OF FIRMS RESPONSIBILITY	NAME AND ADDRESS OF OWNER	ESTIMATED COMPLETION DATE	ESTIMATED CONSTRUCTION COST	
				ENTIRE PROJECT	YOUR FIRMS RESPONSIBILITY
Marshall Community & Technical College Huntington, West Virginia	Civil, Site Design, Surveying	Marshall University Facilities Planning & Management, Huntington, WV	2009	\$20,000,000	15%
New Teays Elementary Scott Depot, West Virginia	Civil, Site Design, Surveying	Putnam County BOE Winfield, WV 25213	2009	\$12,000,000	15%
Moorefield Intermediate School Moorefield, West Virginia	Civil, Site Design, Surveying,	Hardy County BOE 510 Ashby Street Moorefield, WV 26836	2009	\$12,000,000	15%
Marshall University, Health & Wellness Center, Dormitories Huntington, WV	Civil, Site Design, Hardscape	Marshall University Facilities Planning & Management, Huntington, WV	2009	\$27,000,000	10%
Twin Falls State Park Lodge Expansion McDowell County, WV	Civil, Site Design	WV Division of Natural Resources, Capitol Building 3, R663 Charleston, WV 25305	2009	\$5,500,000	15%
University High School Monongalia County, WV	Civil, Site Design	Monongalia County Schools, 668 River Rd Morgantown, WV 26507	2009	\$12,000,000.00	20%



17. COMPLETE WORK WITHIN LAST 5 YEARS ON WHICH YOUR FIRM WAS THE DESIGNATED ENGINEER OF RECORD

PROJECT NAME, TYPE AND LOCATION	NAME AND ADDRESS OF OWNER	ESTIMATED CONSTRUCTION COST	YEAR	CONSTRUCTED (YES OR NO)
Montgomery Wastewater Treatment Plant Upgrade, Design Montgomery, West Virginia	City of Montgomery 706 3 <sup>rd</sup> Avenue Montgomery WV 25136	\$2,800,000	2009	Under Const.
Sleeths Run Bridge CR119/1 Lewis County West Virginia	WV DOT Building 5, Room A-110 1900 Kanawha Blvd. East Charleston WV 25305	\$ 1,800,000	2009	Under Construction
Fairmont Connector, Value Engineering, Kanawha Stone Company	WV DOT Building 5, Room A-110 1900 Kanawha Blvd. East Charleston WV 25305	Savings of \$2,500,000	2009	Under Construction
Derrick Creek Water Line Extensions Sissonville, West Virginia	West Virginia American Water PO Box 1906 Charleston WV 25327	\$1,500,000	2009	Yes
Gypsy Bridge S317-19-23.25 00 Erection Plans Harrison County, West Virginia	Bilco Construction Company, Inc. 805 Wisteria Drive South Charleston, WV 25309	\$ 20,000 fee	2008	Yes
South Branch Potomac River Bridge, X316-H-100.40 04 Erection Plans Hardy County, West Virginia	Vecellio & Grogan, Inc. P.O. Box 2438 Beckley, WV 25902	\$31,000,000	2008	Yes
WV Route 2 Water Line Extensions Huntington, West Virginia	West Virginia American Water PO Box 1906 Charleston WV 25327	\$450,000	2008	Yes
Sawmill Village Development Site/civil Design, Snowshoe, West Virginia	Summit III, LLC 295 Seven Farms Drive Charleston, WV 29492	\$100,000,000	2008	Yes

Continued on next page.

17. COMPLETE WORK WITHIN LAST 5 YEARS ON WHICH YOUR FIRM WAS DESIGNATED ENGINEER OF RECORD

PROJECT NAME, TYPE AND LOCATION	NAME AND ADDRESS OF OWNER	ESTIMATED CONSTRUCTION COST	YEAR	CONSTRUCTED (YES OR NO)
Derrick Creek Water Line Extensions Sissonville, West Virginia	West Virginia American Water PO Box 1906 Charleston WV 25327	\$1,200,000	2008	Yes
Upper Fishers Branch/Guthrie Water Main Extension Kanawha County, West Virginia	West Virginia American Water PO Box 1906 Charleston WV 25327	\$2,800,000	2008	Under Const.
Upper Frame Phase 2 Water Main Extension Kanawha County, West Virginia	Kanawha County RDA & West Virginia American Water PO Box 1906 Charleston WV 25327	\$2,100,000	2008	Under Const.
Back Fork Water Main Extension Webster County, West Virginia	West Virginia American Water PO Box 1906 Charleston WV 25327	\$800,000	2008	Under Const.
New Hope 1 MG Water Storage Tank Princeton, West Virginia	WV American Water PO Box 1906 Charleston WV 25327	\$600,000	2008	Yes
Putnam County 2007 Water Main Extensions, Putnam County, West Virginia	Putnam County Commission 3389 Winfield Road Winfield, WV 25213	\$2,000,000	2008	Yes
Fort Lee Hydraulic Study, Water Line Extensions, and New Fuel Tanks Hope Well, Virginia	Virginia American Water Co. 900 Industrial Street Hopewell, VA 23860	\$450,000	2008	Yes
Yeager Airport Rental Car Parking Deck Charleston, West Virginia	Central West Virginia Airport 100 Airport Road #175 Charleston, WV 25311	\$3,000,000	2008	Yes

Continued on next page

17. COMPLETE WORK WITHIN LAST 5 YEARS ON WHICH YOUR FIRM WAS DESIGNATED ENGINEER OF RECORD

PROJECT NAME, TYPE AND LOCATION	NAME AND ADDRESS OF OWNER	ESTIMATED CONSTRUCTION COST	YEAR	CONSTRUCTED (YES OR NO)
Salt Rock PSD Water Main Extensions Salt Rock, West Virginia	Salt Rock PSD & Cabell County Commission Huntington, West Virginia	\$1,500,000	2008	Yes
US 35 Value Engineering, Ramp 1, WV 34 Interchange Putnam County, West Virginia	WVDOT Building 5, Room A-110 1900 Kanawha Blvd. East Charleston WV 25305	Saving \$3,000,000	2007	Yes
Tucker County Landfill Expansion Design of Cell 6 Thomas, West Virginia	Tucker County Solid Waste Authority PO Box 58 Thomas WV 26292	\$2,500,000	2007	Yes
Rabel Mountain Water Main Extensions Kanawha County, West Virginia	WV American Water PO Box 1906 Charleston WV 25327	\$600,000	2007	Yes
Sedalia Arch Bridge, Bridge Replacement Sedalia, West Virginia	WVDOT Building 5, Room A-110 1900 Kanawha Blvd. East Charleston WV 25305	\$890,000	2006	Yes
Fairmont Coke Works Redevelopment Traffic Study, Fairmont, West Virginia	City Fairmont 200 Jackson Street Fairmont, West Virginia 26554	\$20,000 fee	2006	No
Hinton Landslide, Landslide Reclamation Hinton, West Virginia	WVDOT, Division of Highways Building 5, Room A-110 1900 Kanawha Boulevard East Charleston, WV 25305	\$1,000,000	2006	Yes
Fort Lee Water Distribution System Upgrade Fort Lee, Virginia	WV American Water PO Box 1906 Charleston WV 25327	\$1,000,000	2006	Yes
Prince Williams 1 Million Gallon Elevated Water Storage Tank Prince Williams County, Virginia	WV American Water PO Box 1906 Charleston WV 25327	\$1,500,000	2006	Yes
Hickory Ridge Water Storage Tank Relocation, County, West Virginia	WV American Water PO Box 1906 Charleston WV 25327	\$1,000,000	2006	Yes
Winfield High School Expansion Winfield, West Virginia	Putnam County BOE Winfield, WV 25213	\$2,000,000	2006	Yes

17. COMPLETE WORK WITHIN LAST 5 YEARS ON WHICH YOUR FIRM WAS DESIGNATED ENGINEER OF RECORD

PROJECT NAME, TYPE AND LOCATION	NAME AND ADDRESS OF OWNER	ESTIMATED CONSTRUCTION COST	YEAR	CONSTRUCTED (YES OR NO)
Fountain Place Mall Phase 2 Site/Civil Design Logan, West Virginia	Fountain Place Mall PO Box 794 Logan, WV 25601	\$10,000,000	2005	Yes
Jenkin Jones Refuse Piles Mine Reclamation McDowell County, West Virginia	WVDEP/AML&R 601 57 <sup>TH</sup> Street SE Charleston WV 25304	\$4,000,000	2005	Yes
Bendale Dam Repair Design Lewis County, West Virginia	WV American Water PO Box 1906 Charleston WV 25327	\$100,000	2005	Yes
Corridor L Widening Design US Route 19 Summersville, West Virginia	WVDOT, Division of Highways Building 5, Room A-110 1900 Kanawha Boulevard East Charleston, WV 25305	\$12,100,000	2005	No
WV 73 Turning Lanes Fountain Place Development Logan County, West Virginia	WVDOT Building 5, Room A-110 1900 Kanawha Blvd. East Charleston WV 25305	\$ 600,000	2005	Yes

18. COMPLETED WORK WITHIN LAST 5 YEARS ON WHICH YOUR FIRM HAS BEEN A SUB-CONSULTANT TO OTHER FIRMS (INDICATE PHASE OF WORK FOR WHICH YOUR FIRM AS RESPONSIBLE)						
PROJECT NAME, TYPE AND LOCATION	NAME AND ADDRESS OF OWNER	ESTIMATED CONSTRUCTION COST OF YOUR FIRM'S PORTION	YEAR	CONSTRUCTED (YES OR NO)	FIRM ASSOCIATED WITH	
Fairmont State University Campus Improvements Fairmont, West Virginia	Fairmont State University 1201 Locust Avenue Fairmont, WV 26554	\$1,000,000	2007	Yes	Omni Associates	
Mountain View Elementary Civil, Site Design, Surveying Scott Depot, West Virginia	Putnam County BOE Winfield, WV 25213	\$1,000,000	2008	Yes	Williamson Shriver Architects	
Mountain State University Health Science Building Civil/Site/Surveying Beckley, WV	Mountain State University PO Box 9003 Beckley, WV 25802-9003	\$1,500,000	2007	Yes	Dan Sneed Architects	
WVU Recreation Center Master Plan Morgantown, WV	West Virginia University	\$2,000,000	2006	No	Omni Associates	
Doddridge County High School Doddridge County, West Virginia	Doddridge County BOE 104 Sistersville Pike West Union, WV 26456	\$1,500,000	2006	Yes	Williamson Shriver Architects	
Capon Bridge Intermediate School Hampshire County, West Virginia	Hampshire County BOE 46 South High Street Romney, WV 26757	\$1,000,000	2006	Yes	Williamson Shriver Architects	
Fairmont Public Safety Building, Fairmont, West Virginia	City Fairmont 200 Jackson Street Fairmont, West Virginia 26554	\$4,000,000	2005	Yes	Omni Associates	
Mountain View Elementary Scott Depot, West Virginia	Putnam County BOE Winfield, WV 25213	\$2,000,000	2008	Yes	Williamson Shriver Architects	
Moorefield Intermediate School Moorefield, West Virginia	Hardy County BOE 510 Ashby Street Moorefield, WV 26836	\$12,000,000	2008	Yes	Williamson Shriver Architects	

18. COMPANED WORK WITHIN LAST 5 YEARS ON WHICH YOUR FIRM HAS BEEN A SUB-CONSULTANT TO OTHER FIRMS (INDICATE PHASE OR WORK FOR WHICH YOUR FIRM AS RESPONSIBLE)

PROJECT NAME, TYPE AND LOCATION	NAME AND ADDRESS OF OWNER	ESTIMATED CONSTRUCTION COST OF YOUR FIRM'S PORTION	YEAR	CONSTRUCTED (YES OR NO)	FIRM ASSOCIATED WITH
WVDEP Headquarters Building, Site/Civil, Survey Kanawha County, WV	WVDEP 601 57 <sup>th</sup> Street SE Charleston WV 25304	\$30,000,000.00	2005	Yes	BBL-Carlton
Marshall University, Health & Wellness Center, Dormitories Site/Civil, Survey Huntington, WV	Marshall University Facilities Planning & Management, Huntington, WV	\$27,000,000	2009	Yes	Capstone Development
Pikeview Middle School Site/Civil, Survey Mercer County, West Virginia	Mercer County Public Schools 1403 Honaker Avenue Princeton, WV 24740	\$5,000,000	2009	Under Construction	E.T Boggess Architects
Doddridge County High School US Route 50 Turning Lanes Design Doddridge County, West Virginia	WVDOT Building 5, Room A-110 1900 Kanawha Blvd. East Charleston WV 25305	\$100,000	2006	Yes	Williamson Shriver Architects
WVARNG Eleanor Access Road Surveying & Roadway Design Eleanor, West Virginia	WV Army National Guard 1740 Coonskin Drive Charleston WV 25311	\$300,000	2009	Yes	Williamson Shriver Architects

19. Use this space to provide any additional information or description of resources supporting your firm's qualifications to perform work for the West Virginia Abandoned Mine Lands Program.

TERRADON has extensive experience in both wet and dry mine seals, with or without bat gates. Our recent experience with Stonecoal Creek had over two dozen mine seals, and Morgan Run had over twenty as well. In addition, we have done regrading on numerous refuse piles and highwalls including Jenkin Jones, Micajah, Linger, Camp Mahonegan, Cedar Creek, Roaring Creek and Tappers Creek, Gerath and Drews Creek Landslides. We have experience regarding over 6 miles of dangerous highwall on the Garden Ground site in Fayette County. TERRADON also has experience designing road upgrades and pile and lagging walls, as well as experience in drainage design on all projects.

20. The foregoing is a statement of facts.

Signature:  Title: Principal Engineer

Printed Name: Timothy T. White, P.E.

Date: March 9, 2010

NOTE: THIS DOCUMENT WILL BECOME VOID AFTER DECEMBER 31 IN CALENDAR YEAR OF DATE HEREON.

STATE OF WEST VIRGINIA  
Purchasing Division

**PURCHASING AFFIDAVIT**

**West Virginia Code §5A-3-10a states:** No contract or renewal of any contract may be awarded by the state or any of its political subdivisions to any vendor or prospective vendor when the vendor or prospective vendor or a related party to the vendor or prospective vendor is a debtor and the debt owed is an amount greater than one thousand dollars in the aggregate.

**DEFINITIONS:**

"Debt" means any assessment, premium, penalty, fine, tax or other amount of money owed to the state or any of its political subdivisions because of a judgment, fine, permit violation, license assessment, defaulted workers' compensation premium, penalty or other assessment presently delinquent or due and required to be paid to the state or any of its political subdivisions, including any interest or additional penalties accrued thereon.

"Debtor" means any individual, corporation, partnership, association, limited liability company or any other form or business association owing a debt to the state or any of its political subdivisions. "Political subdivision" means any county commission; municipality; county board of education; any instrumentality established by a county or municipality; any separate corporation or instrumentality established by one or more counties or municipalities, as permitted by law; or any public body charged by law with the performance of a government function or whose jurisdiction is coextensive with one or more counties or municipalities. "Related party" means a party, whether an individual, corporation, partnership, association, limited liability company or any other form or business association or other entity whatsoever, related to any vendor by blood, marriage, ownership or contract through which the party has a relationship of ownership or other interest with the vendor so that the party will actually or by effect receive or control a portion of the benefit, profit or other consideration from performance of a vendor contract with the party receiving an amount that meets or exceed five percent of the total contract amount.

**EXCEPTION:** The prohibition of this section does not apply where a vendor has contested any tax administered pursuant to chapter eleven of this code, workers' compensation premium, permit fee or environmental fee or assessment and the matter has not become final or where the vendor has entered into a payment plan or agreement and the vendor is not in default of any of the provisions of such plan or agreement.

Under penalty of law for false swearing (*West Virginia Code §61-5-3*), it is hereby certified that the vendor affirms and acknowledges the information in this affidavit and is in compliance with the requirements as stated.

**WITNESS THE FOLLOWING SIGNATURE**

Vendor's Name: Qk4

Authorized Signature: *[Handwritten Signature]* Date: December 7, 2010

State of West Virginia

County of Kanawha, to-wit:

Taken, subscribed, and sworn to before me this 7 day of DECEMBER, 2010.

My Commission expires JULY 5th, 2020.

AFFIX SEAL HERE

NOTARY PUBLIC *[Handwritten Signature]*

