



Consulting Engineers

1428 Main Street
Princeton, WV 24740
304-431-7800
304-425-0445 (f)

December 13, 2010

Mr. Chuck Bowman
West Virginia Department of Environmental Protection
Office of Abandoned Mine Lands and Reclamation
c/o State of West Virginia Department of Administration
Purchasing Division
2019 Washington Street, East
Charleston, WV 25305-0130

RECEIVED

2010 DEC 14 A 10:06

PURCHASING DIVISION
STATE OF WV

**RE: Expression of Interest – John’s Branch Coal Refuse Dam (Kopperston)
DEP15214**

Dear Mr. Bowman:

Pentree, Inc. is pleased to have the opportunity to provide the West Virginia Department of Environmental Protection with our high standard of professional engineering design services on the John’s Branch Coal Refuse Dam (Kopperston) design project in Wyoming County.

Along with the knowledge of AML procedures gained from the completed construction of the Mullens/Wyco Water Project for Eastern Wyoming County P.S.D. (Wyoming County) we offer our extensive experience with access roads, drainage, demolition, stream bank protection and re-vegetation. We will also utilize the experience of our affiliate company, Thrasher Engineering, Inc. who is currently working on and has successfully completed similar WV DEP’s Office of Abandoned Mine Lands and Reclamation (AML & R) projects. With our long history as a West Virginia full service civil engineering firm, we will provide the AML & R with quality professional engineering service in a timely and cost efficient manner.

Following the instructions outlined in the RFQ, this proposal contains information regarding Pentree, Incorporated’s history, qualifications and management and staffing capabilities along with the required DEP/AML Consultant’s Confidential Qualifications Questionnaire, and an affidavit stating Pentree, Incorporated has no debt owed to the State of West Virginia.

We thank you for your consideration of our qualifications and look forward to the opportunity to present our qualifications and project methodology to you in person.

Sincerely,
PENTREE, INCORPORATED

A handwritten signature in black ink, appearing to read 'John W. Tuggle', is written over a horizontal line.

JOHN W. TUGGLE, P.E., P.S.
President/ Principal-In-Charge

**STATEMENT OF QUALIFICATIONS
FOR
ENGINEERING SERVICES
TO THE**

**WEST VIRGINIA
DEPARTMENT OF ENVIRONMENTAL PROTECTION**

John's Branch Coal Refuse Dam Project

TABLE OF CONTENTS

SELECTION CRITERIA	3
STATEMENT OF QUALIFICATIONS	4
MANAGEMENT AND STAFFING	7
REPRESENTATIVE PROJECTS	16
PROJECT APPROACH	24
DEP/AML CQQ	Tab 6
AML PROJECT MATRIX	Tab 7
AFFADAVIT	Tab 8

SELECTION CRITERIA

A. West Virginia Professional Engineers (Civil or Mining) in the Primary Office.

Pentree, Incorporated. has **4 West Virginia registered Professional Engineers** in our Primary Office located in Princeton, WV.

John Tuggle, PE
Robert Hazelwood, PE
Matthew Anderson, PE
Robert Shields, PE

B. Reclamation engineering design experience of the Primary Office's WV RPE as it relates to the specific project problem areas.

John Tuggle, PE, will serve as Project Manager and Principal-in-Charge. He has over 28 years of civil engineering experience on a wide variety of projects. Many of these projects included design elements that are common with AML & R projects.

Chadwick Biller, PE, is with our affiliate company, Thrasher Engineering, Inc., and will serve as peer reviewer and provide QA/QC services for this project. He has over **18 years** of civil engineering experience. He has served as Project Manager on a number of successful WV DEP Office of Abandoned Mine Lands & Reclamation projects.

Larry Nottingham, PE, with NGE will serve as our Geotechnical sub-consultant. He has over **30 years** of AML design experience.

C. Available WV-AML Design Teams within the Primary office (A design team should consist of one Project Engineer (Civil or Mining), one CAD person and available support personnel as required by the particular project)

Pentree has the equivalent of **4 WV-AML Design Teams** within the Primary Office; however, we have identified our primary WV-AML team that will be responsible for this project in the pages that follow.

MANAGEMENT AND STAFFING

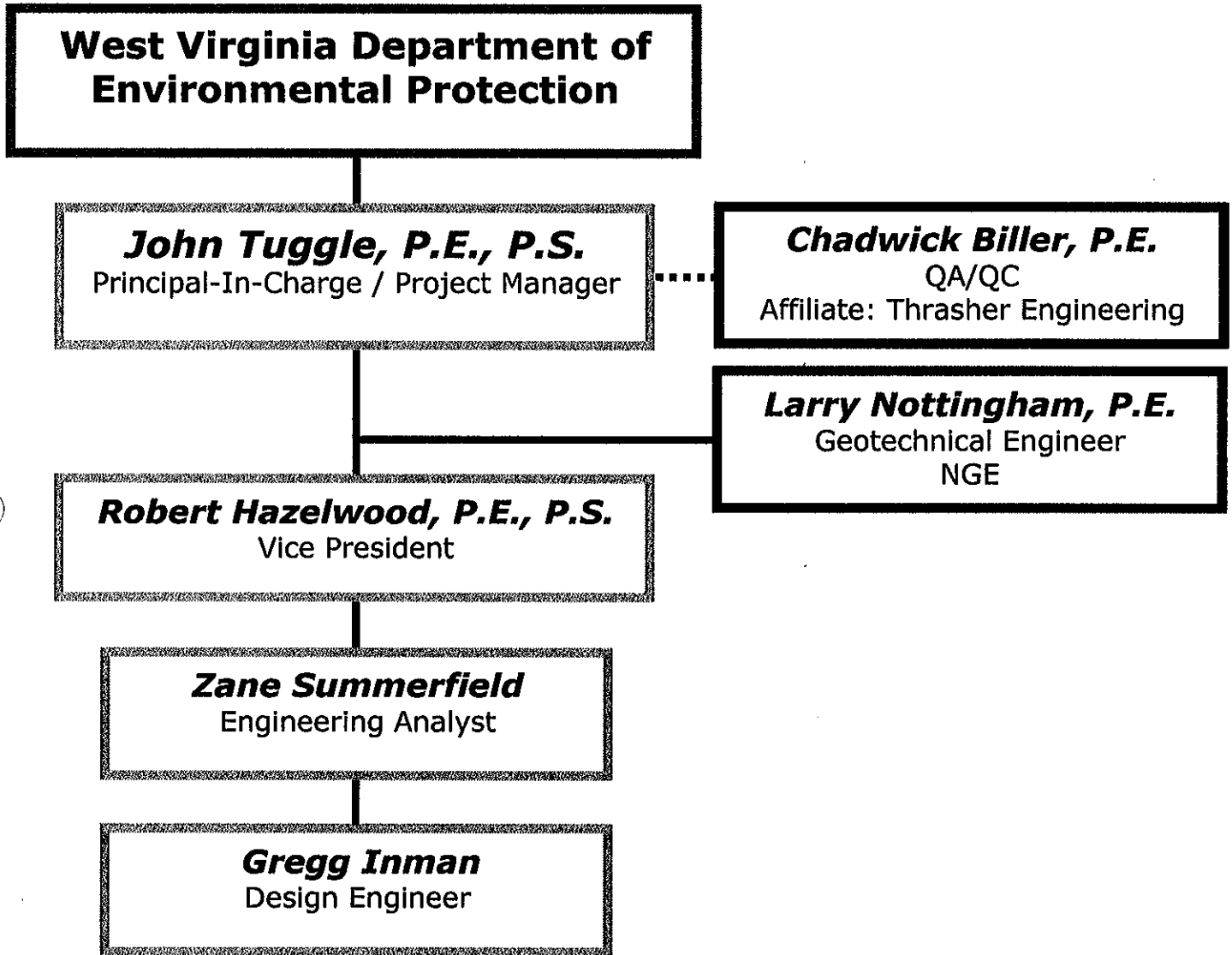
Pentree, Incorporated has dedicated personnel committed to providing superior service throughout all aspects of the engineering process, from consulting and planning through preparation of documentation needed throughout the construction process.

Pentree, Incorporated offers a highly qualified and experienced staff to the WV DEP for this project. The Pentree, Inc. staff includes:

- 3 CIVIL ENGINEERS**
- 1 SANITARY ENGINEER**
- 4 SPECIFICATION WRITERS**
- 4 CADD OPERATORS**
- 5 SURVEYORS**
- 5 CONSTRUCTION INSPECTORS**
- 3 PHOTOGRAMMETRISTS**
- 3 ADMINISTRATIVE SUPPORT PERSONNEL**

Pentree, Incorporated is staffed with four registered professional engineers, three of whom are also licensed professional surveyors. Additionally, the staff of construction inspectors, diversely skilled technicians and support personnel provides the resources and support necessary to supply our clients with the thorough and efficient services they desire and deserve.

PROJECT TEAM



THE WV DEP JOHN'S BRANCH COAL REFUSE DAM PROJECT TEAM

Pentree, Incorporated will assign a team of talented and experienced engineers and firm principals to this project. Each member of this team brings a specific area of expertise that is essential for a successful project

John Tuggle, P.E., P.S., President of Pentree, Inc. is the **Principal-In-Charge** and will serve as **Project Manager**. He is actively involved in the daily management of the firm. Mr. Tuggle's expertise and knowledge of project management and civil engineering will assure you of a quality project that meets your specifications.

Bob Hazelwood, P.E., P.S. will serve as **Chief Engineer** for the project. Mr. Hazelwood will be responsible for overseeing all technical aspects of the project. Mr. Hazelwood has over 25 years of experience in the evaluation and design of AML funded projects.

Mr. Hazelwood will be assisted by, **Zane Summerfield**, who will provide analysis and mining expertise for the design. **Gregg Inman** will provide technical and design assistance for the project.

Chadwick Biller, PE, is with our affiliate company, Thrasher Engineering, Inc., and will serve as peer reviewer and provide QA/QC services for this project. He has over **18 years** of civil engineering experience. He has served as Project Manager on a number of successful WV DEP Office of Abandoned Mine Lands & Reclamation projects.

Larry Nottingham, PE, with NGE will serve as our Geotechnical sub-consultant. He has over **30 years** of AML design experience.

Resumes for the team members follow.

JOHN TUGGLE, P.E., P.S.
PRESIDENT / PRINCIPAL-IN-CHARGE



PROJECT EXPERIENCE:

- **TOWN OF NORTHFORK WATER LINE EXTENSION** – Principal-In-Charge
- **BERKELEY COUNTY PUBLIC SERVICE SEWER DISTRICT BAKER HEIGHTS WASTEWATER TREATMENT PLANT, INWOOD WASTEWATER TREATMENT PLANT, ECOLAB AND APACHE PUMP STATION** – Principal-In-Charge
- **JEFFERSON COUNTY PUBLIC SERVICE DISTRICT BRECKENRIDGE PUMP STATION, NPDES PERMIT RENEWAL AND DISTRICT PLAN REVIEW**; Principal-In-Charge
- **CITY OF MOUNT HOPE KILSYTH UTILITY EXTENSION**; Principal-In-Charge
- **ELKHORN PUBLIC SERVICE DISTRICT SANITARY SEWER PROJECT** - Principal-In-Charge
- **GREEN VALLEY-GLENWOOD COUNTY PUBLIC SERVICE DISTRICT VARIOUS WASTEWATER PROJECTS** – Project Oversight, Contract and Construction Administration
- **COWEN PUBLIC SERVICE DISTRICT CAMDEN WATER TREATMENT PLANT UPGRADE AND WATER LINE EXTENSION PROJECT; SANITARY SEWER LINE EXTENSION PROJECTS** – Project Manager, Contract and Construction Administration
- **MCDOWELL COUNTY PRISON SITE DEVELOPMENT** - Principal-In-Charge
- **WEBSTER COUNTY INDUSTRIAL PARK** – Project Manager, Contract and Construction Administration
- **WEST VIRGINIA DEPARTMENT OF TRANSPORTATION DISTRICT 10 HEADQUARTERS COMPLEX** – Project Manager, Contract and Construction Administration
- **GAULEY RIVER PUBLIC SERVICE DISTRICT TWENTYMILE AND ROUTE 39 / PETERS CREEK WATER LINE EXTENSION PROJECT** – Project Manager, Contract and Construction Administration
- **CITY OF OAK HILL SANITARY BOARD WOLF CREEK PARK SANITARY SEWER SERVICE, FAYETTE PLATEAU PACKAGE PLANT AND POTENTIAL SANITARY SEWER PLANT UPGRADE**; Principal-In-Charge
- **TOWN OF FAYETTEVILLE NICKLEVILLE SEWER PROJECT** – Principal-In-Charge
- **WYTHE COUNTY FORT CHISWELL PLANT UPGRADE** - Principal-In-Charge

PROFESSIONAL RESPONSIBILITIES:

Mr. Tuggle joined Pentree, Incorporated in 1985 and serves as President and Principal-In-Charge for the firm. His primary responsibility is the oversight of all firm projects.

Mr. Tuggle has extensive experience working with various regulatory and funding agencies, and is extremely knowledgeable of contract preparation, analysis and interpretation. He has also recommended and assisted numerous clients in securing the best source of funding to suit their needs.

Mr. Tuggle has been involved with various types of projects including:

- Water Treatment Plants
- Water System Upgrades
- Water Line Extensions
- Wastewater Treatment Plants
- Sanitary Sewer System Upgrades
- Sewer Line Extensions
- Storm Water Management
- Industrial Park Site Development
- Subdivision Development
- Highways and Roads
- Access Roads
- Bridges
- Airports

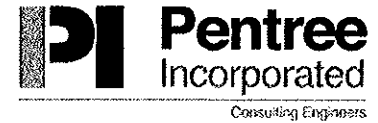
EDUCATION:

B.S. Civil Engineering Technology, 1982
Bluefield State College

ACTIVE REGISTRATIONS:

Professional Engineer, 1988	#011845
State of West Virginia	
Professional Surveyor, 1995	#1176
State of West Virginia	

**ROBERT HAZELWOOD, P.E., P.S.
EXECUTIVE VICE-PRESIDENT**



PROJECT EXPERIENCE:

- **GREENBRIER COUNTY PUBLIC SERVICE DISTRICT #2** SANITARY SEWER COLLECTION SYSTEM AND WASTEWATER TREATMENT PLANT – Design Engineer and Quality Control
- **RED SULPHUR SPRINGS PUBLIC SERVICE DISTRICT** VARIOUS SANITARY SEWER AND WATER PROJECTS – Design Engineer and Quality Control
- **RAVENSCLIFF-MCGRAWS-SAULSVILLE PUBLIC SERVICE DISTRICT** WATER PROJECTS – Design Engineer and Quality Control
- **GREEN VALLEY-GLENWOOD PUBLIC SERVICE DISTRICT** SANITARY SEWER PROJECTS INCLUDING A 1.5 MGD WASTEWATER TREATMENT PLANT, SEWER LINE EXTENSIONS AND UPGRADES – Design Engineer and Quality Control
- **EDRAY TECHNICAL PARK**, POCAHONTAS COUNTY, WEST VIRGINIA – Design Engineer and Quality Control
- **FOUNTAIN SPRINGS INDUSTRIAL PARK**, MONROE COUNTY, WEST VIRGINIA – Design Engineer and Quality Control
- **PETERSTOWN SATELLITE MEDICAL CLINIC ADDITION**, MONROE COUNTY, WEST VIRGINIA – Design Engineer and Quality Control
- **DEER RUN SUBDIVISION**; 13 LOTS ON 14 ACRES – Design Engineer and Quality Control
- **PLEASANT VALLEY ESTATES**; 23 LOTS ON 17 ACRES - Design Engineer and Quality Control
- **TWIN OAKS SUBDIVISION**; 18 LOTS ON 12 ACRES - Design Engineer and Quality Control
- **EASTERN WYOMING PSD**; MULLENS WYCO WATER PROJECT - WATER TREATMENT PLANT, WATER STORAGE TANKS, AN UPGRADE OF THE LOWER GULF WATER SYSTEM AND AN UPGRADE OF THE UPPER GULF WATER SYSTEM.

PROFESSIONAL RESPONSIBILITIES:

Mr. Hazelwood joined Pentree, Incorporated in 1979 and serves as Executive Vice President for the firm. In this capacity, his primary responsibility is to provide Quality Control and Quality Assurance for projects.

Mr. Hazelwood's experience includes preliminary and final design, preparation of contract documents and specifications and project management.

Additionally, Mr. Hazelwood has extensive knowledge working with regulatory agencies and in recommending and assisting clients in securing cost effective funding for their projects.

- Water Treatment Plants
- Wastewater Treatment Plants
- Storm Water Management
- Industrial Parks
- Airports
- Subdivisions
- Shopping Centers
- Access Roads

EDUCATION:

- M.S. Sanitary Engineering, 1976
VPI and State University
- B.S. Civil Engineering, 1975
West Virginia Institute of Technology

ACTIVE REGISTRATIONS:

- Professional Engineer, 1980 #008452
State of West Virginia
- Professional Surveyor #1179
State of West Virginia

J. ZANE SUMMERFIELD

SENIOR CIVIL ANALYST



PROJECT EXPERIENCE:

- **JEFFERSON COUNTY PSD**– Reviewed plans and specifications to assure compliance with WVBPH and WVDEP rules and regulations and with the District's construction specifications.
- **CHANDLERS GLEN SUBDIVISION PUMP STATION AND FORCE MAIN** – Preparation of design and construction drawings and documents, permit applications, and calculations for and writing of the engineering report.
- **MCLAUGHLIN FARM SUBDIVISION PUMP STATION AND FORCE MAIN** – Preparation of design and construction drawings and documents, permit applications, and calculations for and writing of the engineering report.
- **CITY OF MOUNT HOPE KILSYTH SEWER UPGRADE PROJECT** – Analysis of WWTP performance, preparation of facility plan and engineering report and assistance with construction drawings and documents and permit applications.
- **JEFFERSON COUNTY PSD FLOWING SPRINGS FACILITY PLAN** – Research, analysis, preliminary design, document writing and presentation of proposed project to the District and the public.
- **BERKELEY COUNTY PUBLIC SEWER SERVICE DISTRICT BAKER HEIGHTS & INWOOD WWTP UPGRADES** - Analysis of the 0.90 MGD and 0.75 MGD WWTP's, projection of growth, documentation of existing performance, analysis of impact of the Chesapeake Bay Agreement, recommendation of upgrades to triple the capacity of both plants.
- **JEFFERSON COUNTY PSD 2005 WASTEWATER FACILITY PLAN** – Research, analysis, preliminary design, document writing, and presentation to the District and the public.
- **BERKELEY COUNTY PUBLIC SEWER SERVICE DISTRICT SPRING MILLS WWTP UPGRADE** – Analysis of existing plant performance, preparation of design and construction drawings and documents and the engineering report and permit applications.

PROFESSIONAL RESPONSIBILITIES:

Mr. Summerfield joined Pentree, Incorporated in 1998 and serves as Senior Civil Analyst for the firm. He is responsible for the analysis of clients' existing data to determine their current situation. Mr. Summerfield also prepares facility plans, engineering reports, and specifications and plan sets. Additionally, Mr. Summerfield provides general design assistance, permit preparation and environmental reporting. Prior to his current position with the firm, Mr. Summerfield served as Photogrammetry manager and Aerial Photographer.

SCOPE OF EXPERIENCE:

- **SITE PLANNING** – Site planning, design and contract documents for a variety of motel/hotel sites, restaurants, fire stations, subdivisions, golf courses and convenient stores.
- **MINE PERMITTING** – Design and permitting of surface and deep mine sites including high wall miner and known acid producing seams.
- **SOLID WASTE** – Design and permitting of solid waste transfer stations, participation in public hearings and construction specifications.
- **SANITARY SEWER & WATER SYSTEMS** – Design and permitting of sanitary sewer collection and water distribution systems for various subdivisions.

EDUCATION:

B.S.	Mining Engineering	1982
	West Virginia Institute of Technology	
A.S.	Mining Engineering	1976
	West Virginia Institute of Technology	
AUTOCAD		1992
	Carver Career Center	

GREGG INMAN, E.I.T.
DESIGN ENGINEER/CHIEF TECHNICIAN



PROJECT EXPERIENCE:

- **FORT CHISWELL WASTEWATER TREATMENT PLANT – CADD DESIGN**
- **EASTERN WYOMING PSD MULLENS-WYCO WATER TREATMENT PLANT – Drafting, Design for New "Smaller" Plant System**
- **TOWN OF DAVY BIG SANDY-ASCO WATER LINE EXTENSION – Design**
- **CITY OF OAK HILL – SANITARY SEWER RELOCATION - DESIGN**
- **GAULEY RIVER PUBLIC SERVICE DISTRICT SMITH BRANCH WATER LINE RELOCATION PROJECT – DESIGN**
- **TOWN OF NORTH FORK – WATER LINE EXTENSION PROJECT – DESIGN**
- **PAGE-KINCAID PSD SANITARY SEWER EXTENSION – PACKAGE PLANT DESIGN**
- **GLEN WHITE / TRAP HILL PSD – WATER LINE EXTENSION PROJECT - DESIGN**
- **ALLEGHENY ELECTRIC POWER – MCGRAW SUBSTATION – SITE DEVELOPMENT AND GRADING – DESIGN**
- **PUMP STATION DESIGN – EASTERN PANHANDLE (JEFFERSON / BERKELEY COUNTIES)**
 - TILHANCE DEVELOPMENT
 - JC BUTLER DEVELOPMENT
 - BARNHART DEVELOPMENT
 - CREST CREEK SUBDIVISION
 - BC McLAUGHLIN DEVELOPMENT
- **BERKELEY COUNTY PUBLIC SERVICE SEWER DISTRICT – OPEQUON AND BAKER HEIGHTS PUMP STATIONS - DESIGN**

PROFESSIONAL RESPONSIBILITIES:

Mr. Inman joined Pentree, Incorporated in 2005 and serves as Staff Engineer and Chief Technician for the firm. In this capacity he has a variety of responsibilities including, but not limited to:

- Drafting
- Utility Design
- Site Design
- Permitting
- Specifications
- Technical Writing

EDUCATION:

B.S. Civil Engineering Technology –
2005 Bluefield State College

ACTIVE REGISTRATIONS/AFFILIATIONS:

Registered EIT – State of West Virginia

CHADWICK D. BILLER, P.E.
Partner / Project Manager

THRASHER
ENGINEERING

SUMMARY OF EXPERIENCE

Mr. Biller has experience in all aspects of civil engineering with specific emphasis on mine reclamation, site development, highways, roads, bridges, and airports. Mr. Biller joined Thrasher Engineering in 1999 and is a partner in the firm. He serves as Project Manager for all WV DEP AML projects. As Project Manager for all of the firm's WVDOT/DOH projects, he has extensive knowledge of state and federal building standards.

EDUCATION

- B.S., Civil Engineering, 1992 – West Virginia University**

CERTIFICATIONS

- Registered Professional Engineer (PE), State of West Virginia #13620**
- Registered Professional Engineer (PE), State of Pennsylvania #PE056012E**
- Registered Professional Engineer (PE), State of Ohio #64594**

REPRESENTATIVE PROJECT EXPERIENCE

Site Development Projects

- WV DEP AML&R Anglin's Run**
- WV DEP AML&R Roaring Creek**
- WV DEP AML&R Squires Creek**
- WV DEP AML&R Overdale (Lafferty)**
- Fairmont State University Aerospace Center**
- Raleigh County Memorial Airport Industrial Park**
- Putnam Business Park**
- Wood Products Business Park**
- Aurora Flight Sciences**
- Various Subdivision in Berkeley County Ranging From 12 to 420 Lots**
- Site Plan for Hi-Tech Consortium Expansion, Fairmont, WV**
- Site Plans for Nippon Thermostat, Green Metals and Schwans, Putnam County**
- Pendleton County Courthouse Annex**
- Wingate Hotel, Charles Pointe, Bridgeport, WV**
- Daycare Center and USDA Parking Lot, Hardy County**
- Snowshoe Mountain Resort / Intrawest – The Seneca**
- Wetland Replacement Project, Putnam County**
- Hurricane Business Park**
- Shinnston City Park, Including Pool and Bathhouse**
- City of Bridgeport, Walking Trail and Bridge**

Airports

- Harrison Marion Regional Airport – Improvement Master Plan**
- Raleigh County Airport – Business Park and Master Plan**
- Grafton Hospital, Helipad Relocation**

Highway/Road/Bridge Projects (partial list)

- Old Bridgeport Hill New Storm Drainage System**
- Snowshoe Drive Upgrade**
- King Coal Highway**
- Terra Alta Curve**
- Lodgeville Road**
- North Bridgeport Bypass**
- Corridor H**
- Upgrade of US Route 19**
- East Street and US Route 50, Parkersburg**

John E. Nottingham, P.E., P.S.

Mr. Nottingham has served as lead Geotechnical Engineer on numerous government and commercial design and construction projects. His responsibilities on these projects include direction and coordination of all geotechnical engineering activities. Duties on these projects have included foundation investigation report production, foundation and retaining wall design, fill embankment and cut slope design, dam design and analysis, slope stability analysis, pavement design, design of drainage systems, supervision of subsurface drilling programs, field activity coordination, laboratory data computation and processing, performance of field work, client relations, and supervision of staff and project level geotechnical engineers.



Fields of Competence

- Highway & Airport Geotechnical Design
- Foundation Investigations
- Pavement Analysis and Design
- Landslide Analysis & Remedial Design
- Ground Water and Seepage Analysis & Design
- Retaining Wall Design
- Mine Subsidence Investigations
- Forensic & Insurance Investigations
- Construction Monitoring
- Personnel Management
- Project Management (schedule and budget)
- Project Estimating

Education

B.S., Civil Engineering, West Virginia University - 1987
M.S., Civil Engineering, West Virginia University - 1995

Registration/Certifications

- Registered Professional Engineer in West Virginia. Registration No. 12357 (since 1994)
- Registered Professional Surveyor in West Virginia. Registration No. 1495 (since 1995)

Employment History

- November 2002 – Present
Branch Manager, Novel Geo-Environmental, LLC
- 1997 – November 2002
Geotechnical Services Manager, Triad Engineering, Inc.
- 1996 – November 2002
Senior Engineer, Triad Engineering, Inc.
- 1993 – 1996
Project Engineer, Triad Engineering, Inc.
- 1988 – 1993
Staff Engineer, Triad Engineering, Inc.

RELATED EXPERIENCE



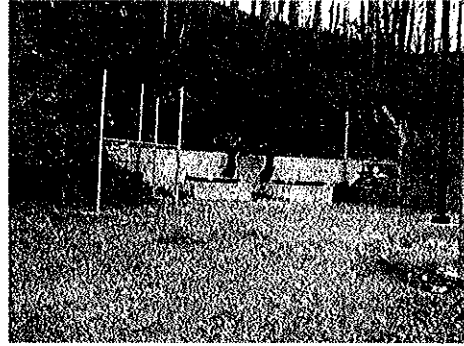
Over the past century, Pentree, Incorporated has surveyed, planned, designed and managed construction for numerous utility projects.

On the following pages are examples of specific recent projects that represent our abilities with drainage and stabilization projects that are comparable in scope of services similar to the needs of the WV DEP for the John's Branch Coal Refuse Dam Project.

The representative projects are as follows:

- Eastern Wyoming Public Service District
- City of Oak Hill
- US Gypsum
- King Coal Highway
- Inwood Watershed Study
- Anglins Run (Thrasher)
- Roaring Creek (Thrasher)
- Squires Creek (Thrasher)
- Overfield (Thrasher)
- Amhersdale (Thrasher)
- Ragland (Thrasher)

References for each of these projects are included and we welcome you to contact them, most of whom are repeat clients.



EASTERN WYOMING PUBLIC SERVICE DISTRICT

Owner/Contact:

William Baisden
Eastern Wyoming Public Service District
P.O. Box 506
Logan, WV 25601
304-946-2641

Mullens-Wyco Water Project

Project consists of five contracts to improve and upgrade the Eastern Wyoming Public Service District's water system. This project includes a Water Treatment Plant, Water Storage Tanks, an upgrade of the Lower Gulf Water System and an upgrade of the Upper Gulf Water System. The design called for the closure of four mine portals, one of which was sealed with the capacity to continue to provide a raw water source for the District. The other three portals were wet sealed with allowance for controlled overflow.

Project Location:

Wyoming Co., WV

Professional Engineering Services Provided:

- Preparation of preliminary engineering reports
- Assisting Owner with applications for State and Federal funding
- Design in accordance with all applicable State and Federal regulations
- Assisting Owner with permits required
- Preparation of bidding and contracting documents
- Participation in the evaluation of bids received
- Monitor and inspect construction activities
- Assisting Owner with construction administration



City of Oak Hill Drainage Phased Projects

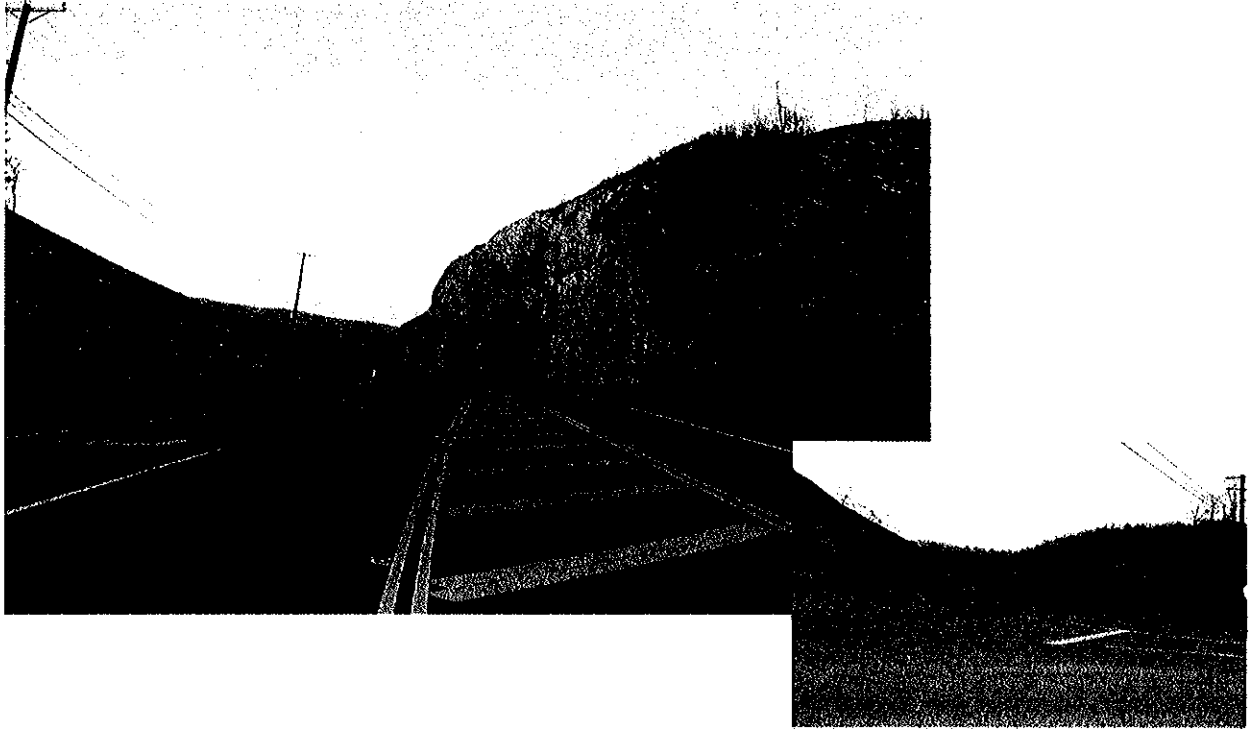
Owner/Contact:
Bill Hannabass, City Manager
City of Oak Hill
P.O. Box 1245
Oak Hill, WV 25901
304-469-9541

Pentree, Incorporated provided the City of Oak Hill with a study, preliminary and final design plans, and specifications for management of approximately 2,200 acre watershed which created flooding along the path of Arbuckle Creek and throughout the city limits. The first phase of the project consisted of replacement of eleven culverts totalling 1,252 lineal feet. The new culverts were designed to carry a 50-year flood and alleviate consistent annual flooding along the banks of Arbuckle Creek. Pentree, Incorporated has worked closely with the West Virginia DEP to satisfy Soil Conservation and wetlands concerns. Phase II of the project is in the Virginia Street/ Trump Avenue area of the City as shown in the flood and construction pictures above.

Project Location:
Fayette Co., WV

Professional Engineering Services Provided:

- Preparation of preliminary engineering reports
- Assisting Owner with applications for State and Federal funding
- Design in accordance with all applicable State and Federal regulations
- Assisting Owner with permits required
- Preparation of bidding and contracting documents
- Participation in the evaluation of bids received
- Monitor and inspect construction activities
- Assisting Owner with construction administration

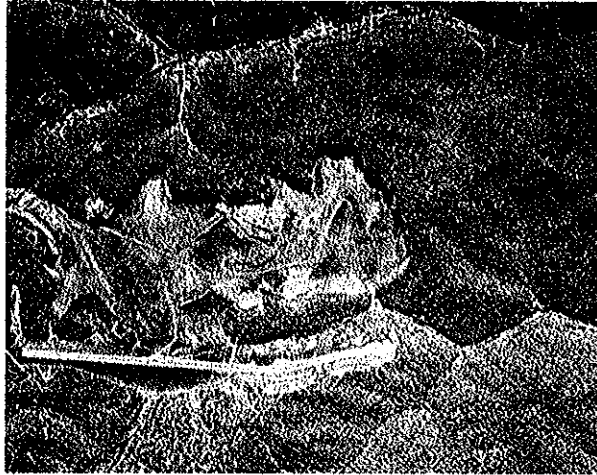


US GYPSUM

Owner/Contact
George Rolan
U.S. Gypsum
6072 Main Street
Saltville, VA 24370
276-496-7733

Project Location:
Washington Co., VA

Pentree, Incorporated, provided engineering and design services for the relocation of Routes 91 and 745 in Washington County due to subsidence associated with mine abandonment. In conjunction with the roadway relocation project, design for the relocation of approximately 5,000 feet of waterline for the Town of Saltville and 6,000 feet of waterline for the Washington County P.S.A.. Additional design provided for an upgrade to one of Saltville's raw water sources and associated water treatment processes.



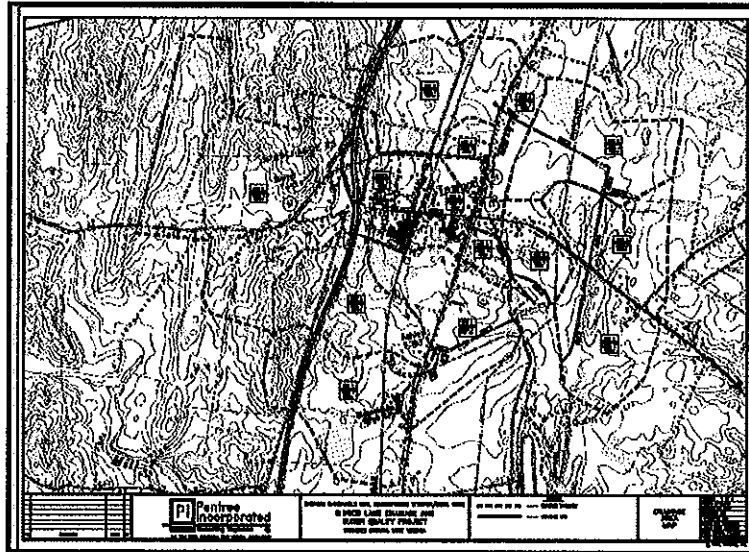
KING COAL/COALFIELDS EXPRESSWAY

Owner/Contact:
West Virginia
Department of Highways
Ali Sadeghian, Project Manager
Division of Highways
Bldg 05 Room A-317
State Capital Complex
Charleston, WV 25305
304-558-9745

Project Location:
McDowell and Wyoming Counties, West Virginia

**KING COAL (Interstate 73/74) and
COALFIELDS EXPRESSWAY
(U.S. Route 121)
INTERCHANGE, McDOWELL and WYOMING COUNTIES**

Study and complete design of final plans for a major new interchange. Study involved four alternative configuration schemes for the interchange. Final plans included two additional interchanges, five miles of interstate, expressway - roadway and eleven (11) bridges and required over 6 ½ million cubic yards of excavation.



USDA/Natural Resource and Conservation Services Eastern Panhandle Soil Conservation Service Inwood Watershed Project

Owner/Contact
Donald L. Dirting
Conservation Project Specialist
State of West Virginia
Soil Conservation Agency
1450-1 Edwin Miller Boulevard
Martinsburg, WV 25401

Project Location: Berkeley County, West Virginia

The Study involved an 827acre area just south of the Youth Fairgrounds in Berkeley County, WV. The project was divided into three phases to allow for staged funding. The project includes the construction of drainage piping, drop inlets, headwalls and open channel ditch lines to carry the storm water away from the area during and after a storm event. Professional services for this project are closely aligned with the goals of the Commission for the proposed project.

THRASHER ENGINEERING ABANDONED MINE LAND PROJECTS

ANGLIN'S RUN #1, BARBOUR COUNTY

*Client: WV DEP Office of Abandoned Mine Lands and Reclamation
Greg Smith 304-457-3219*

This area included a total of eight (8) collapsed mine portals with at least 5 of them having discharges ranging from 1 to 10 gpm. Total flows were estimated to be between 25 and 30 gpm. Thrasher Engineering designed an access road into the site, excavation and wet seal of eight (8) deep mine portals. To carry water safely off site, drainage control channels, conveyance pipe and under drain were also constructed. All areas disturbed by construction were soil covered, conditioned and re-vegetated. The project has been designed, bid, and constructed.



ROARING CREEK, RANDOLPH COUNTY

*Client: WV DEP Office of Abandoned Mine Lands and Reclamation
Greg Smith 304-457-3219*

This project involved the elimination of subsidence depressions, the closure of four portals. The Roaring Creek Watershed was heavily deep mined and surfaced mined prior to 1977. The project area consists of 3 open and 1 closed portals discharging AMD. This project also involved regrading of an area with dozens of subsidence depressions. Some of the depressions were so large that the mine shafts were excavated out and backfilled with rock. Surface water had to be rerouted through the site into an existing farm pond. In order to handle the additional flow an emergency spillway had to be designed for the existing pond. This project has been designed, bid, and constructed.



SQUIRES CREEK, PRESTON COUNTY

Client: WV DEP Office of Abandoned Mine Lands and Reclamation

Greg Smith 304-457-3219

Thrasher Engineering has just begun the preliminary engineering on this project for the WV Office of AML&R. The project involves sealing five closed portals and one open portal, reclaiming 200 linear feet of high wall and three acres of refuse piles. Adjacent to this project is a stockpile of fly ash that was used by ICG on another AML project. This fly ash will be moved to this project to help neutralize the existing refuse piles.

OVERFIELD (LAFFERTY) CS & P PROJECT, BARBOUR COUNTY

Client: WV DEP Office of Abandoned Mine Lands and Reclamation

Greg Smith 304-457-3219

Thrasher Engineering has just begun the preliminary engineering on this project for the WV Office of AML&R. The project involves reclaiming a strip pit, determine portal location if any and install a wet seal. Safely convey 50 gallons per minute discharge through the Lafferty property and into a road ditch. The water will then be transferred into a new storm drain system located in a subdivision that empties into an existing valley. A two acre gob pile on the South side of CR 57 will also be reclaimed with soil and vegetated.

AMHERSTDALE PRE-SETTLING BASIN AND PRE-TREATMENT FACILITY PROJECT, LOGAN COUNTY

Client: WV DEP Office of Abandoned Mine Lands and Reclamation

The AML affected area is located in Logan County on CR 16, west of the city limits of Man, a distance of approximately 12.6 Miles. The scope of the project is the design and construction of a pre-settling basin and pre-treatment system to remove metals and turbidity from the existing water sources, allowing the water existing treatment facility to utilize the surface and groundwater. Thrasher Engineering provided for this project included: Survey, supervision of subsurface investigation, environmental review, preparation of design, drawings, development of construction documents.

RAGLAND WATER LINE EXTENSION PROJECT, MINGO COUNTY

Client: WV DEP Office of Abandoned Mine Lands and Reclamation

The AML affected area is located in the Midwestern portion of Mingo County. The area is approximately 2.6 square miles. Services Thrasher Engineering provided for this project included: survey, supervision of subsurface investigation, environmental review, design, and development of construction documents.

PROJECT APPROACH

In order to develop an understanding of the WV DEP's needs for this project, Pentree Incorporated studied the information provided in the RFQ. Based upon our findings, we have developed the following project approach to demonstrate our technical abilities and straight forward method of design and construction.

This project approach is a general approach that will be used on any WVDEP reclamation project and may need to be modified depending on the existing information that is available for the specific project. Also, some steps may not be needed on every project.

Step #1 Obtain adequate mapping. The limits of construction will be flown and digitally mapped or, if the area is small enough, survey crews will field survey the area. Pentree will then provide 1"=50' scale mapping with 2' contours. Spot elevations and critical cross sections may be completed in the field if necessary to make tie-ins.

Step #2 Design the project. Pentree will work closely with the WVDEP in designing the project. A scope meeting and preliminary field review will be conducted to determine the most cost effective method to be used to reclaim the area. A preliminary design based on these meetings will be submitted to the WVDEP. After receiving comments or corrections, Pentree will submit the final plans, specifications and design report. The design report will consist of the bore logs, piezometer elevations, quantity calculations, right of entry forms and any other assumptions that were made during the design. A final field review will all be conducted.

Step #3 Prepare for construction. Pentree will also set up reference points, benchmarks and control points outside of the construction limits so the contractor will be able to construct the project in the future. Pentree will obtain a NPDES permit and any other permits that are required for the project. Also, any right of ways, and easements that is necessary to construct the project. The project manager and engineer will attend the pre-bid meetings to answer any questions that contractors may have about the design.

Step # 4 Construct the project. The project manager will be available during construction to answer any questions the contractor or inspector may have.

Pentree will provide the highest level of customer service and responsiveness throughout the project to the WV DEP Office of Abandoned Mine Lands & Reclamation representatives.

**WEST VIRGINIA DEPARTMENT OF ENVIRONMENTAL PROTECTION
AML CONSULTANT CONFIDENTIAL QUALIFICATION QUESTIONNAIRE Attachment "B"**

PROJECT NAME: RFQ# DEP15214
John's Branch Coal Refuse Dam Design
Logan County

1. FIRM NAME
Pentree, Inc.

DATE (DAY, MONTH, YEAR)
13-December-2010

FEIN
55-0483692

2. HOME OFFICE BUSINESS ADDRESS
1248 Main St./P.O. Box 1309
Princeton, WV 24740

3. FORMER FIRM NAME
Bennett-Nave-Thomas

4. HOME OFFICE TELEPHONE
(304) 431-7800

5. ESTABLISHED (YEAR)
1904

6. TYPE OWNERSHIP
Individual Corporation x
Partnership Joint-Venture

6a. WV REGISTERED DBE
(Disadvantaged Business Enterprise)
YES NO x

7. PRIMARY AML DESIGN OFFICE: ADDRESS/ TELEPHONE/ PERSON IN CHARGE/ NO. AML DESIGN PERSONNEL EACH OFFICE
1428 Main St/P.O. Box 1309/Princeton, WV 24740/304-431-7800/John Tuggle/5

8. NAMES OF PRINCIPAL OFFICERS OR MEMBERS OF FIRM
John W. Tuggle, P.E., P.S. Principle in Charge
Robert D. Hazelwood, P.E., P.S. Vice President

8a. NAME, TITLE, & TELEPHONE NUMBER - OTHER PRINCIPALS

9. PERSONNEL BY DISCIPLINE

3 ADMINISTRATIVE ARCHITECTS	—	ECOLOGISTS	—	LANDSCAPE ARCHITECTS	—	STRUCTURAL ENGINEERS
BIOLOGIST	—	ELECTRICAL ENGINEERS	—	MECHANICAL ENGINEERS	—	5 SURVEYORS
4 CADD OPERATORS	—	ENVIRONMENTALISTS	3	MINING ENGINEERS	—	TRAFFIC ENGINEERS
CHEMICAL ENGINEERS	—	ESTIMATORS	—	PHOTOGRAMMETRISTS	—	OTHER
3 CIVIL ENGINEERS	—	GEOLOGISTS	1	PLANNERS: URBAN/REGIONAL	—	
5 CONSTRUCTION INSPECTORS	—	HISTORIANS	—	SANITARY ENGINEERS	—	
DESIGNERS	—	HYDROLOGISTS	4	SOILS ENGINEERS	—	
DRAFTSMEN	—		—	SPECIFICATION WRITERS	—	28 TOTAL PERSONNEL

TOTAL NUMBER OF WV REGISTERED PROFESSIONAL ENGINEERS IN PRIMARY OFFICE: 4
*RPEs other than Civil and Mining must provide supporting documentation that qualifies them to supervise and perform this type of work.

10. HAS THIS JOINT-VENTURE WORKED TOGETHER BEFORE? YES NO **NOT APPLICABLE**

11. OUTSIDE KEY CONSULTANTS/SUB-CONSULTANTS ANTICIPATED TO BE USED. Attach "AML Consultant Confidential Qualification Questionnaire".

<p>NAME AND ADDRESS: Thrasher Engineering, Inc. (Affiliate Company) 30 Columbia Blvd., Clarksburg, WV</p>	<p>SPECIALTY: Current WV DEP AML&R Consultant</p>	<p>WORKED WITH BEFORE ___X___ Yes ___ No</p>
<p>NAME AND ADDRESS: NGE</p>	<p>SPECIALTY: Geotechnical Engineering</p>	<p>WORKED WITH BEFORE ___ Yes ___ No</p>
<p>NAME AND ADDRESS:</p>	<p>SPECIALTY:</p>	<p>WORKED WITH BEFORE ___ Yes ___ No</p>
<p>NAME AND ADDRESS:</p>	<p>SPECIALTY:</p>	<p>WORKED WITH BEFORE ___ Yes ___ No</p>
<p>NAME AND ADDRESS:</p>	<p>SPECIALTY:</p>	<p>WORKED WITH BEFORE ___ Yes ___ No</p>
<p>NAME AND ADDRESS:</p>	<p>SPECIALTY:</p>	<p>WORKED WITH BEFORE ___ Yes ___ No</p>
<p>NAME AND ADDRESS:</p>	<p>SPECIALTY:</p>	<p>WORKED WITH BEFORE ___ Yes ___ No</p>
<p>NAME AND ADDRESS:</p>	<p>SPECIALTY:</p>	<p>WORKED WITH BEFORE ___ Yes ___ No</p>

12. A. Is your firm experienced in Abandoned Mine Lands Remediation/Mine Reclamation Engineering?

YES Description and Number of Projects: PENTREE INCORPORATED HAS COMPLETED DESIGN FOR 13 PARTIALLY IMPACTED AML WATER PROJECTS: AMONG THESE INCLUDE THE KEYROCK WATER EXTENSION PROJECT FOR RAVENCLIFF-MCGRAWS-SAULSVILLE PSD IN WYOMING COUNTY AND MULLENS/WYCO WATER PROJECT FOR THE EASTERN WYOMING PSD ALSO IN WYOMING COUNTY. THE EWPSD PROJECT WAS THE 2006 EPA REGION 9 AWARD WINNING PROJECT FOR SUSTAINABLE PUBLIC HEALTH PROTECTION ENCOMPASSING SEVEN FAILING, FLOODED AND ABANDONED WATER SYSTEMS. ADDITIONALLY, WE PROVIDED ENGINEERING SERVICES FOR THE FIRST IN THE STATE OF WEST VIRGINIA PARTIALLY IMPACTED AML PROJECT FOR GAULEY RIVER PSD WITH THE JODIE WATER LINE EXTENSION PROJECT IN 1998.

B. Is your firm experienced in Soil Analysis?

YES Description and Number of Projects: PENTREE, INCORPORATED HAS ACCESS TO A MATERIALS TESTING AND ANALYSIS LAB AT OUR AFFILIATE OFFICE (THRASHER ENGINEERING) IN BECKLEY, WV. SOIL ANALYSIS EXPERIENCE IS SPECIFICALLY IN GRADATIONS AND CLASSIFICATIONS

NO

C. Is your firm experienced in hydrology and hydraulics?

YES Description and Number of Projects: THROUGH OUR WORK ON WATER SYSTEM PROJECTS FOR VARIOUS PSDS AND MUNICIPALITIES, WE HAVE DEVELOPED HYDRAULIC MODELING OF SYSTEMS, AND USE KENTUCKY PIPE 2010 FOR OUR AML DESIGN TEAM ANALYSIS.

NO

D. Does your firm produce its own Aerial Photography and Develop Contour Mapping?

YES Description and Number of Projects: EVERY WATER AND WASTEWATER PROJECT PENTREE HAS DESIGNED IN THE LAST 35 YEARS HAS BEEN PHOTOGRAMMETRICALLY PRODUCED BY OUR IN-HOUSE PHOTOGRAMMETRY DEPARTMENT.

E. Is your firm experienced in domestic waterline design? (Include any experience your firm has in Evaluation of aquifer degradation as a result of mining.)-

YES DESCRIPTION AND NUMBER OF PROJECTS: PENTREE, INCORPORATED HAS DESIGNED OVER 54 WATER LINE EXTENSION AND REPLACEMENT PROJECTS IN THE PAST 39 YEARS OF BUSINESS. PROJECTS INCLUDE LINES, BOOSTER STATIONS, WATER TREATMENT PLANTS AND STORAGE FACILITIES.

Is your firm experienced in Acid Mine Drainage Evaluation and Abatement Design? NO

13. PERSONAL HISTORY STATEMENT OF PRINCIPALS AND ASSOCIATES RESPONSIBLE FOR AML PROJECT DESIGN (Furnish complete data but keep to essentials)

NAME & TITLE (Last, First, Middle Int.)	YEARS OF EXPERIENCE	
Tuggle, John W. P.E., P.S. President	YEARS OF AML DESIGN EXPERIENCE: 10	YEARS OF AML RELATED DESIGN EXPERIENCE: 25
		YEARS OF DOMESTIC WATERLINE DESIGN EXPERIENCE: 25

Brief Explanation of Responsibilities

Mr. Tuggle serves as President of Pentree, Incorporated. Mr. Tuggle is Principal in Charge for public utility projects including sanitary sewer, water and storm water management. His primary responsibility is the oversight of all firm projects. In this capacity he is responsible for feasibility studies and design, regulatory and funding assistance for state, federal and private clients. Additionally, he has extensive experience working with funding and regulatory agencies in conjunction with projects. In the capacity of Principal-In-Charge, for this AML design project, he will work closely with the Project Manager to ensure timeliness of the projects, client satisfaction and oversee budgetary aspects.

EDUCATION (Degree, Year, Specialization)

BACHELOR OF SCIENCE, 1985, BLUEFIELD STATE COLLEGE - CIVIL ENGINEERING TECHNOLOGY

MEMBERSHIP IN PROFESSIONAL ORGANIZATIONS

WEST VIRGINIA RURAL WATER ASSOCIATION

REGISTRATION (Type, Year, State)

P.E. 1993 - WEST VIRGINIA #11845
P.S. 1995 - WEST VIRGINIA #1176

13. PERSONAL HISTORY STATEMENT OF PRINCIPALS AND ASSOCIATES RESPONSIBLE FOR AML PROJECT DESIGN (Furnish complete data but keep to essentials)

NAME & TITLE (Last, First, Middle Int.)	YEARS OF EXPERIENCE	
Hazelwood, Robert D. P.E., P.S. Vice President	YEARS OF AML DESIGN EXPERIENCE: 9	YEARS OF AML RELATED DESIGN EXPERIENCE: 31
		YEARS OF DOMESTIC WATERLINE DESIGN EXPERIENCE: 31

Brief Explanation of Responsibilities

Robert D. Hazelwood, P.E., P.S. Vice President of Pentree, Inc. will serve as Project Manager / Project Engineer. His major responsibility will be for project oversight of all design and construction aspects. Mr. Hazelwood has extensive experience in water line extension projects throughout West Virginia, particularly Southern West Virginia. Additionally, Mr. Hazelwood was/is Project Manager/Project Engineer for the Mullens/Wyco Water System Upgrade, the Keyrock Water Project, Itmann/Bud Mountain Water Project, Glen Fork-Sabine Water Project and the R.D. Bailey Regional Water System and Extension Project - all of which have extensive funding with the WVDEP AML. As such, Mr. Hazelwood is well versed in AML reporting and deadline requirements.

EDUCATION (Degree, Year, Specialization)

- M.S., Sanitary Engineering, 1976 - Virginia Polytechnical Institute
- B.S., Civil Engineering, 1975 - West Virginia Technical Institute

MEMBERSHIP IN PROFESSIONAL ORGANIZATIONS

WEST VIRGINIA RURAL WATER ASSOCIATION

REGISTRATION (Type, Year, State)

P.E 1980 - WEST VIRGINIA #008452
P.S.1995 - WEST VIRGINIA #1179

13. PERSONAL HISTORY STATEMENT OF PRINCIPALS AND ASSOCIATES RESPONSIBLE FOR AML PROJECT DESIGN (Furnish complete data but keep to essentials)

NAME & TITLE (Last, First, Middle Int.)	YEARS OF EXPERIENCE	YEARS OF DOMESTIC WATERLINE DESIGN EXPERIENCE:
Anderson, Matthew P.E.	3	8

Brief Explanation of Responsibilities
 As Design Engineer for Pentree, Mr. Anderson will provided his expertise in permitting, preliminary and final engineering reports, site design, technical writing and hydraulic analysis. Having worked on multiple AML projects in the past, Mr. Anderson is adept at working within the guidelines of the agency.

EDUCATION (Degree, Year, Specialization)
 B.S. 1998, CIVIL ENGINEERING TECHNOLOGY, BLUEFIELD STATE COLLEGE
 B.S. 1999, ARCHITECTURAL ENGINEERING TECHNOLOGY, BLUEFIELD STATE COLLEGE

MEMBERSHIP IN PROFESSIONAL ORGANIZATIONS
 West Virginia Rural Water Association

REGISTRATION (Type, Year, State)
 P.E., 2009, STATE OF WEST VIRGINIA
 P.E., 2005, STATE OF VIRGINIA

13. PERSONAL HISTORY STATEMENT OF PRINCIPALS AND ASSOCIATES RESPONSIBLE FOR AML PROJECT DESIGN (Furnish complete data but keep to essentials)

NAME & TITLE (Last, First, Middle Int.)	YEARS OF EXPERIENCE	YEARS OF DOMESTIC WATERLINE DESIGN EXPERIENCE:
Shields, Robert G. (Gary) P.E., P.S.	0	7

Brief Explanation of Responsibilities: Mr. Shields joined Pentree, Incorporated in 2003 and serves as Survey Manager for the firm. Prior to his employment with Pentree, Mr. Shields worked as an Independent Licensed Land Surveyor. Currently, he supervises, assigns and reviews all of Pentree, Incorporated's survey activities. In addition to being a Professional Surveyor, Mr. Shields is also a registered Professional Engineer.

EDUCATION (Degree, Year, Specialization)
 B.S., 1982, Civil Engineering Technology, Bluefield State College

MEMBERSHIP IN PROFESSIONAL ORGANIZATIONS
 West Virginia Society of Professional Surveyors
 American Society of Civil Engineers

REGISTRATION (Type, Year, State)
 Professional Engineer, 1990,
 State of West Virginia #10786
 Professional Surveyor, 1982
 State of West Virginia #766
 Professional Surveyor, 1986
 State of Virginia #1545

13. PERSONAL HISTORY STATEMENT OF PRINCIPALS AND ASSOCIATES RESPONSIBLE FOR AML PROJECT DESIGN (Furnish complete data but keep to essentials)

NAME & TITLE (Last, First, Middle Int.)	YEARS OF EXPERIENCE		
	YEARS OF AML DESIGN EXPERIENCE:	YEARS OF AML RELATED DESIGN EXPERIENCE:	YEARS OF DOMESTIC WATERLINE DESIGN EXPERIENCE:
Inman, Gregg E., E.I.T.	4	4	5

Inman, Gregg E., E.I.T.

Brief Explanation of Responsibilities: Mr. Inman joined Pentree in 2005 and serves as Staff Design Engineer and Chief Technician for the firm. In this capacity he has a variety of responsibilities including drafting, utility design, site design, permitting, specifications and technical writing.

EDUCATION (Degree, Year, Specialization)
 B.S., 2005, Civil Engineering Technology, Bluefield State College

MEMBERSHIP IN PROFESSIONAL ORGANIZATIONS

REGISTRATION (Type, Year, State)
 Registered E.I.T. - State of West Virginia

13. PERSONAL HISTORY STATEMENT OF PRINCIPALS AND ASSOCIATES RESPONSIBLE FOR AML PROJECT DESIGN (Furnish complete data but keep to essentials)

NAME & TITLE (Last, First, Middle Int.)	YEARS OF EXPERIENCE		
	YEARS OF AML DESIGN EXPERIENCE:	YEARS OF AML RELATED DESIGN EXPERIENCE:	YEARS OF DOMESTIC WATERLINE DESIGN EXPERIENCE:
Summerfield, J. Zane	15	15	12

Brief Explanation of Responsibilities:

Mr. Summerfield will provide expertise and analysis for the drainage and re-vegetation aspect of this project. Having worked with for the mining industry as a permit specialist and hydrology analyst, his combination of technical and design capabilities will enhance the overall depth of the design team.

EDUCATION (Degree, Year, Specialization)
 A.S., 1976 West Virginia Institute of Technology, Mining Engineering
 B.S., 1982 West Virginia Institute of Technology, Mining Engineering

MEMBERSHIP IN PROFESSIONAL ORGANIZATIONS

REGISTRATION (Type, Year, State)

We perform our work utilizing the most current methods and equipment available.

SURVEY

Our survey work is accomplished with global positioning systems (GPS) and electronic distance measuring (EDM) survey stations with data gathering capabilities. This equipment includes:

- Leica Geosystem System 500 GPS
- Leica Ski Post Processing Software
- Topcon G600 Total Station Instrument
- Leica 303 Total Station Instrument
- Leica 307 Total Station Instrument
- Leica 403 Total Station Instrument
- Leica 405 Total Station Instrument
- Leica 407 Total Station Instrument
- Leica 703 Total Station Instrument
- Prograde 3 Gas Detector
- Flow Meter
- Forney FT-40 Compression Testing Machine
- Troxler 3440 Nuclear Density Gauge
- Troxler 3411 Nuclear Density Gauge
- Rainhart Proctor Machine
- Modified Protractor with Hammer
- Gilson Shaker
- GTS-605 Laser Plummel EDM
- Model 920 Flow Meter
- Submerged Depth Velocity Probe
- Propane Tank
- Daiagator Sewer Flow Monitoring System
- TSP-514 Transport XT Mobility Mailer with Office Laptop
- System 500 Real-Time Processed Bundle
- Multiquip Pump
- System 500 RTK & Post Processing Bundle with Accessories
- Aries Township Pan & Tilt with 1000' & 400' Lateral System

DESIGN

CAD CAPABILITIES

Pentree, Inc., Incorporated provides one of the largest networks of computer aided design (CAD) equipment, software and trained personnel in the State of West Virginia.

AutoCAD Civil 3D Land Desktop Companion 2008 and Microstation V8 software is utilized. Additionally, equipment includes 10 large format (size E) plotters and 5 large format plotter / scanners.

CAD plans are prepared by both dedicated CAD employees and by staff engineers and engineering technicians.

15. CURRENT ACTIVITIES ON WHICH YOUR FIRM IS THE DESIGNATED ENGINEER OF RECORD - WATER DISTRIBUTION PROJECTS

PROJECT NAME, TYPE AND LOCATION	NAME AND ADDRESS OF OWNER	NATURE OF YOUR FIRM'S RESPONSIBILITY	ESTIMATED CONSTRUCTION COST	PERCENT COMPLETE
KEYROCK WATER PROJECT WYOMING COUNTY	RAVENCLIFF-MCGRAW-SAULSVILLE PSD PO BOX 217 MCGRAW, WV 25875	PRELIMINARY ENGINEERING REPORTS REVIEW, ENVIRONMENTAL STUDIES AND PERMITTING, PREPARATION OF PLANS AND SPECIFICATIONS, SURVEY, DESIGN, BID DOCUMENTATION,	\$4,300,000	100%
MULLENS/WYCO WATER PROJECT WYOMING COUNTY	EASTERN WYOMING PSD PO BOX 506 LOGAN, WV 25601	PRELIMINARY ENGINEERING REPORTS, ENVIRONMENTAL STUDIES AND PERMITTING, PREPARATION OF PLANS AND SPECIFICATIONS, SURVEY, DESIGN, BID DOCUMENTATION, REVIEW AND RECOMMENDATION, CONSTRUCTION MANAGEMENT AND INSPECTION	\$14,587,000	100%
ASCO WATER PROJECT MCDOWELL COUNTY	TOWN OF DAVY PO BOX 243 DAVY, WV 24828	PRELIMINARY ENGINEERING REPORTS, ENVIRONMENTAL STUDIES AND PERMITTING, PREPARATION OF PLANS AND SPECIFICATIONS, SURVEY, DESIGN, BID DOCUMENTATION, REVIEW AND RECOMMENDATION, CONSTRUCTION MANAGEMENT AND INSPECTION	\$10,000,000	100%
SPANISHBURG WATER EXTENSION PHASE 2B PROJECT MERCER COUNTY	LASHMEET P.S.D. PO BOX 189 LASHMEET, WV 24733	PRELIMINARY ENGINEERING REPORTS, ENVIRONMENTAL STUDIES AND PERMITTING, PREPARATION OF PLANS AND SPECIFICATIONS, SURVEY, DESIGN, BID DOCUMENTATION, REVIEW AND RECOMMENDATION, CONSTRUCTION MANAGEMENT AND INSPECTION	\$1,898,200	100%

15. CURRENT ACTIVITIES ON WHICH YOUR FIRM IS THE DESIGNATED ENGINEER OF RECORD - WATER DISTRIBUTION PROJECTS

PROJECT NAME, TYPE AND LOCATION	NAME AND ADDRESS OF OWNER	NATURE OF YOUR FIRM'S RESPONSIBILITY	ESTIMATED CONSTRUCTION COST	PERCENT COMPLETE
PAGE-KINCAID WATER PROJECT FAYETTE COUNTY	PAGE-KINCAID PSD PO BOX 165, HWY 61 KINCAID, WV 25119	PRELIMINARY ENGINEERING REPORTS, ENVIRONMENTAL STUDIES AND PERMITTING, PREPARATION OF PLANS AND SPECIFICATIONS, SURVEY, DESIGN, BID DOCUMENTATION, REVIEW AND RECOMMENDATION, CONSTRUCTION MANAGEMENT AND INSPECTION	\$2,400,000	100%
GREENVILLE WATER PROJECT MONROE COUNTY	RED SULPHUR PSD PO BOX 697 PETERSTOWN, WV 24963	PRELIMINARY ENGINEERING REPORTS, ENVIRONMENTAL STUDIES AND PERMITTING, PREPARATION OF PLANS AND SPECIFICATIONS, SURVEY, DESIGN, BID DOCUMENTATION, REVIEW AND RECOMMENDATION, CONSTRUCTION MANAGEMENT AND INSPECTION	\$2,728,000	100% Design - bid opening in January
SUMMERSVILLE WATER LINE EXTENSION NICHOLAS COUNTY	GAULEY RIVER PSD PO BOX 47 SWISS, WV 26690	PRELIMINARY ENGINEERING REPORTS, ENVIRONMENTAL STUDIES AND PERMITTING, PREPARATION OF PLANS AND SPECIFICATIONS, SURVEY, DESIGN, BID DOCUMENTATION, REVIEW AND RECOMMENDATION, CONSTRUCTION MANAGEMENT AND INSPECTION	Phase I \$4,649,702 Phase II \$2,322,890 Phase III \$2,341,622	Phase I is under construction Phase II is 100% design Phase III is 100% design
BIG SANDY WATER PROJECT* McDowell County	McDowell County PSD HC 31, Box 436 Welch, WV 24801	PRELIMINARY ENGINEERING REPORTS, ENVIRONMENTAL STUDIES AND PERMITTING, PREPARATION OF PLANS AND SPECIFICATIONS	\$8,714,120	50% Design
GLEN WHITE TRAP HILL WATER PHASE II * RALEIGH COUNTY	GLEN WHITE TRAP HILL PSD POBOX 100 FAIRDALE, WV 25839	PRELIMINARY ENGINEERING REPORTS, ENVIRONMENTAL STUDIES AND PERMITTING, PREPARATION OF PLANS AND SPECIFICATIONS, SURVEY, DESIGN, BID DOCUMENTATION, REVIEW AND RECOMMENDATION, CONSTRUCTION MANAGEMENT AND INSPECTION	\$5,376,000	95%

15. CURRENT ACTIVITIES ON WHICH YOUR FIRM IS THE DESIGNATED ENGINEER OF RECORD - WATER DISTRIBUTION PROJECTS

PROJECT NAME, TYPE AND LOCATION	NAME AND ADDRESS OF OWNER	NATURE OF YOUR FIRM'S RESPONSIBILITY	ESTIMATED CONSTRUCTION COST	PERCENT COMPLETE
JESSEE MATHENY WATER PROJECT* WYOMING COUNTY	RAVENCLIFF-MCGRAWS- SAULSVILLE PSD PO BOX 217 MCGRAWS, WV 25875	PRELIMINARY ENGINEERING REPORTS, ENVIRONMENTAL STUDIES AND PERMITTING, PREPARATION OF PLANS AND SPECIFICATIONS, SURVEY, DESIGN, BID DOCUMENTATION, REVIEW AND RECOMMENDATION, CONSTRUCTION MANAGEMENT AND INSPECTION	\$6,164,000	100%
GLEN WHITE TRAP HILL WATER PHASE I RALEIGH COUNTY	GLEN WHITE TRAP HILL PSD PO BOX 100 FAIRDALE, WV 25839	PRELIMINARY ENGINEERING REPORTS, ENVIRONMENTAL STUDIES AND PERMITTING, PREPARATION OF PLANS AND SPECIFICATIONS, SURVEY, DESIGN, BID DOCUMENTATION, REVIEW AND RECOMMENDATION, CONSTRUCTION MANAGEMENT AND INSPECTION	\$5,315,000	100%
ITMANN/BUD MOUNTAIN WATER PROJECT WYOMING COUNTY	EASTERN WYOMING PSD PO BOX 506 LOGAN, WV 25601	PRELIMINARY ENGINEERING REPORTS, ENVIRONMENTAL STUDIES AND PERMITTING, PREPARATION OF PLANS AND SPECIFICATIONS, SURVEY, DESIGN, BID DOCUMENTATION, REVIEW AND RECOMMENDATION, CONSTRUCTION MANAGEMENT AND INSPECTION	\$3,064,000	100%
JESSE MATHENY WATER PROJECT *	RAVENCLIFF-MCGRAWS- SAULSVILLE PSD PO BOX 217 MCGRAWS, WV 25875	PRELIMINARY ENGINEERING REPORTS, ENVIRONMENTAL STUDIES AND PERMITTING, PREPARATION OF PLANS AND SPECIFICATIONS, SURVEY, DESIGN, BID DOCUMENTATION, REVIEW AND RECOMMENDATION, CONSTRUCTION MANAGEMENT AND INSPECTION	\$2,027,000	95%
*Represents partially AML funded projects				

17. COMPLETED WORK WITHIN LAST 5 YEARS ON WHICH YOUR FIRM WAS THE DESIGNATED ENGINEER OF RECORD

PROJECT NAME, TYPE AND LOCATION	NAME AND ADDRESS OF OWNER	ESTIMATED CONSTRUCTION COST	YEAR	CONSTRUCTED (YES OR NO)
TWENTYMILE WATER PROJECT FAYETTE COUNTY	GAULEY RIVER PSD PO BOX 47 SWISS, WV 26690	\$4,600,000	2005	YES
VIRGINIA STREET SIDEWALKS FAYETTE COUNTY	CITY OF OAK HILL P.O. BOX 1245 OAK HILL, WV 25901	\$242,311	2006	YES
FORT CHISWELL WASTEWATER TREATMENT PLANT UPGRADE PH I&II WYTHE COUNTY, VA	WYTHE COUNTY BOARD OF SUPERVISORS 340 SOUTH 6 TH ST WYTHEVILLE, VA 24382	PHASE I - \$376,000 PHASE II - \$4,140,655	2006 2008	YES
UPPER GLADE SEWER PROJECT WEBSTER COUNTY	COWEN PSD P.O. BOX 465 COWEN, WV 26026	%5,085,876	2007	YES
CITY OF OAK HILL SIDEWALK REPAIRS FAYETTE COUNTY	CITY OF OAK HILL P.O. BOX 1245 OAK HILL, WV 25901	\$269,482	2008	YES
OAK HILL DRAINAGE PHASE II FAYETTE COUNTY	CITY OF OAK HILL P.O. BOX 1245 OAK HILL, WV 25901	\$736,870	2008	YES
GAP MILLS WATER PROJECT MONROE COUNTY	GAP MILLS PSD P.O. BOX 117 GAP MILLS, WV 24941	\$1,898,000	2008	YES
ASCO WATER PROJECT MCDOWELL COUNTY	TOWN OF DAVY P.O. BOX 246 DAVY, WV 24828	\$1,500,000	2009	YES
INWOOD WASTEWATER TREATMENT PLANT UPGRADE BERKELEY COUNTY	BERKELEY COUNTY PSSD PO BOX 944 MARTINSBURG, WV 25401	\$7,600,000	2009	YES
BAKER HEIGHTS WASTEWATER TREATMENT PLANT UPGRADE BERKELEY COUNTY	BERKELEY COUNTY PSSD PO BOX 944 MARTINSBURG, WV 25401	\$8,730,919	2009	YES
ECOLAB WATERWATER TREATMENT PLANT UPGRADE BERKELEY COUNTY	ECOLAB 942 BAKER ROAD MARTINSBURG, WV 25405	\$1,778,000	2009	YES
KILSYTH WASTEWATER EXTENSION AND PLANT UPGRADE FAYETTE COUNTY	CITY OF MOUNT HOPE P.O. BOX 151 MOUNT HOPE, WV 25880	\$4,061,000	2009	YES
PAGE KINCAID SEWER PROJECT FAYETTE COUNTY	PAGE-KINCAID PSD PO BOX 165, HWY 61 KINCAID, WV 25119	\$10,800,000	2010	YES

STATE OF WEST VIRGINIA
Purchasing Division

PURCHASING AFFIDAVIT

West Virginia Code §5A-3-10a states: No contract or renewal of any contract may be awarded by the state or any of its political subdivisions to any vendor or prospective vendor when the vendor or prospective vendor or a related party to the vendor or prospective vendor is a debtor and the debt owed is an amount greater than one thousand dollars in the aggregate

DEFINITIONS:

"Debt" means any assessment, premium, penalty, fine, tax or other amount of money owed to the state or any of its political subdivisions because of a judgment, fine, permit violation, license assessment, defaulted workers' compensation premium, penalty or other assessment presently delinquent or due and required to be paid to the state or any of its political subdivisions, including any interest or additional penalties accrued thereon.

"Debtor" means any individual, corporation, partnership, association, limited liability company or any other form or business association owing a debt to the state or any of its political subdivisions. "Political subdivision" means any county commission; municipality; county board of education; any instrumentality established by a county or municipality; any separate corporation or instrumentality established by one or more counties or municipalities, as permitted by law; or any public body charged by law with the performance of a government function or whose jurisdiction is coextensive with one or more counties or municipalities. "Related party" means a party, whether an individual, corporation, partnership, association, limited liability company or any other form or business association or other entity whatsoever, related to any vendor by blood, marriage, ownership or contract through which the party has a relationship of ownership or other interest with the vendor so that the party will actually or by effect receive or control a portion of the benefit, profit or other consideration from performance of a vendor contract with the party receiving an amount that meets or exceed five percent of the total contract amount.

EXCEPTION: The prohibition of this section does not apply where a vendor has contested any tax administered pursuant to chapter eleven of this code, workers' compensation premium, permit fee or environmental fee or assessment and the matter has not become final or where the vendor has entered into a payment plan or agreement and the vendor is not in default of any of the provisions of such plan or agreement.

LICENSING: Vendors must be licensed and in good standing in accordance with any and all state and local laws and requirements by any state or local agency of West Virginia, including, but not limited to, the West Virginia Secretary of State's Office, the West Virginia Tax Department, West Virginia Insurance Commission, or any other state agencies or political subdivision. Furthermore, the vendor must provide all necessary releases to obtain information to enable the Director or spending unit to verify that the vendor is licensed and in good standing with the above entities.

CONFIDENTIALITY: The vendor agrees that he or she will not disclose to anyone, directly or indirectly, any such personally identifiable information or other confidential information gained from the agency, unless the individual who is the subject of the information consents to the disclosure in writing or the disclosure is made pursuant to the agency's policies, procedures and rules. Vendors should visit www.state.wv.us/admin/purchase/privacy for the Notice of Agency Confidentiality Policies.

Under penalty of law for false swearing (West Virginia Code, §61-5-3), it is hereby certified that the vendor acknowledges the information in this said affidavit and are in compliance with the requirements as stated.

Vendor's Name: Pentree, Incorporated

Authorized Signature:  Date: December 13, 2010