

Expression of Interest
To Provide Professional
Architectural/Engineering Services
For
Fire Sprinkler Design
at Camp Washington Carver
EOI#DCH11073



RECEIVED

2011 MAR -2 A 10: 21

PURCHASING DIVISION
STATE OF WV

March 2, 2011

VISIONS
A-R-C-H-I-T-E-C-T-S

CMA
ENGINEERING



March 2, 2011

Ms. Shelly Murray
Purchasing Division
2019 Washington Street East
Charleston, WV 25305-0130

Re: EOI #DCH11073 Camp Washington Carver

Dear Ms. Murray:

CMA Engineering is pleased to submit, for your consideration, our qualifications and experience in providing engineering design services for the renovation of the fire sprinkler system at the Great Chestnut Lodge, located at Camp Washington Carver in Clifftop, WV.

CMA has provided design services for numerous fire protection systems. From design of the fire sprinkler systems at various new construction sites at Mylan Pharmaceuticals to the fire sprinkler upgrade at Hayes Middle School, our professional staff is kept informed of the current codes and design criteria through its association with such professional affiliations as the National Fire Protection Association and International Code Council. CMA has worked with the West Virginia State Fire Marshall for 25 years to insure that all projects meet code.

CMA, also, realizes the importance of preserving the historical integrity of the Great Chestnut Lodge as these renovations are implemented. We have provided engineering services for such historical buildings as the Kimball War Memorial, the General Lewis Inn (Lewisburg), the Davis Memorial Presbyterian Church (Elkins) and are currently providing engineering services at Building 1 of the State Capitol Complex.

If architectural services are required, we have included the firm profile and resumes of the key professionals from N Visions Architects in our submittal. CMA and N Visions have successfully collaborated on numerous projects during the last twenty years. Projects include an Open-End contract with the United States Postal Service, numerous renovations and new construction for Kanawha County Schools, the new parking facility, student union and bed-suite housing at Fairmont State University and the HVAC upgrades of the House and Senate Offices at Building 1 of the State Capitol Complex.

CMA appreciates your consideration of our firms and look forward to presenting a more comprehensive statement of our qualifications in a personal interview.

Sincerely,
CMA Engineering

Daniel L. Ellars, P.E.
Vice President

Enclosures

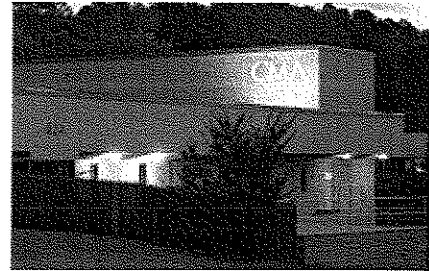
Clingenpeel/McBrayer & Associates, Inc.

Charleston
824 Cross Lanes Drive
Charleston, West Virginia 25313
(304) 343-0316 tel
(304) 343-5146 fax

Morgantown
5 Riddle Court
Morgantown, West Virginia 26505
(304) 598-2558 tel
(304) 598-2472 fax

www.cma.wv.com

C O R P O R A T E P R O F I L E



Clingenpeel/McBrayer & Associates, Inc.

Services

Clingenpeel/McBrayer & Associates is a West Virginia based small business firm, providing services in the areas of HVAC, plumbing, fire protection and electrical engineering. CMA's founders have long believed in the philosophy that a successful project requires a comprehensive approach. This includes all traditional facets of project planning, starting with master planning, working closely with the client, developing the completed construction documents, bidding the project and contract administration. However, our depth of expertise goes far beyond the traditional services. From developing design criteria for owners to designing the mechanical and electrical systems for the West Virginia DEP Consolidated Office Building, the first LEED certified building in the state, CMA is a proven leader in providing engineering services in the design-build delivery method. As we have been involved in LEED Certification and other "LEED-oriented" ventures for several years, we attempt to incorporate the most efficient and sustainable "green" designs in all of our projects.

History

Since 1986, Clingenpeel/McBrayer & Associates has provided services on numerous projects of varying size and complexity. Clients include architects, industrial companies, governmental agencies, contractors, engineers, developers and private organizations. With offices strategically located in Charleston and Morgantown, our professional staff can provide clients with exceptional hands-on engineering services for planning, meetings, site visits and construction administration without effecting the project's budget.

Commitment

Clingenpeel/McBrayer & Associates' submittal is based on your needs and our experience. Our firm has the experience, service and quality work to create a successful project. We are committing senior design professionals in order to assure you receive top priority. We have extensive experience with projects of this nature. Examples of projects for which we were the Engineer are listed in this proposal.

In 1987, computer aided drafting stations were added to provide the best quality and engineering services for our clients. We are currently operating AutoCad 2009. Our firm is constantly monitoring the latest technology, the cost effects and the end results to the final project.

Present staffing allows CMA to complete work in a timely manner without limiting our ability to perform our ongoing work. The staff of CMA is large enough to handle any size project, yet small enough for direct input and supervision by key personnel.



Clingenpeel/McBrayer & Associates, Inc.

824 Cross Lanes Drive
Charleston, WV 25313
(304) 343-0316 tel
(304) 343-5146 fax

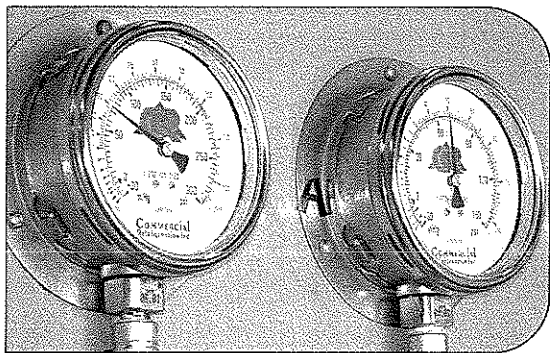
5 Riddle Court
Morgantown, WV 26505
(304) 598-2558 tel
(304) 598-2472 fax

www.cma.wv.com

M E C H A N I C A L

CMA Engineering experience includes:

- Constant Volume Air Handling Systems
- Variable Volume Air Handling Systems
- Demand Control Ventilation Systems
- Natatorium Dehumidification Systems
- Building Energy and Management Control Systems
- Industrial Ventilation and Exhaust Systems
- Steam and Condensate Systems
- Cooling Plants and Distribution
- Heating Plants and Distribution
- Energy Recovery Systems
- Water Source Heat Pump Systems
- Low, Medium and High Pressure Air Distribution Systems
- Direct Digital, Pneumatic and Hybrid Control Systems
- Kitchen Ventilation and Exhaust Systems



(top) Ruby Memorial Hospital Morgantown, WV
HVAC Exhaust System

(middle) Memorial Ice Rink South Charleston, WV
Refrigerant Pressure Gages

(bottom) Alderson Federal Correctional Facility Alderson, WV
Steam Plant

CMA
ENGINEERING

Clingenpeel/McBrayer & Associates, Inc.

824 Cross Lanes Drive
Charleston, West Virginia 25313
(304) 343-0316 tel
(304) 343-5146 fax

5 Riddle Court
Morgantown, West Virginia 26505
(304) 598-2558 tel
(304) 598-2472 fax

www.cma.wv.com

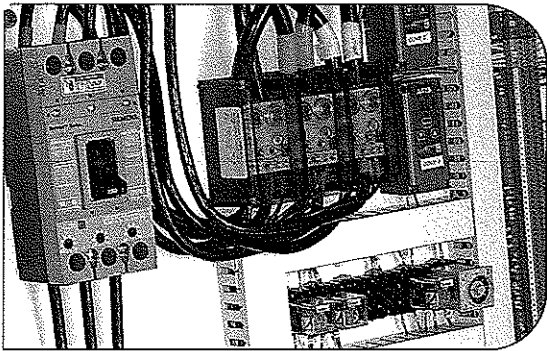
E L E C T R I C A L

CMA Engineering experience includes:

Underground Ducts and Utility Structures
Intrusion Detection
Closed Circuit Television
Cable and Master Antenna Television
Medium Voltage Distribution and Substations
Secondary Voltage Distribution
Engine Generators and Battery Inverters
Transient Voltage Suppression
Interior Lighting
Exterior Lighting
Sports Lighting
Theatrical Lighting
Lighting Control
Uninterruptible Power Supply Systems
Lightning Protection
Intercommunications Systems
Nurse Call
Voice and Data Systems
Fire Detection Systems



(above) Split Rock Pools Snowshoe, WV
Indirect Lighting System



(below) Memorial Ice Rink South Charleston, WV
Chiller Power and Control Panel

CMA
ENGINEERING

Clingenpeel/McBrayer & Associates, Inc.

824 Cross Lanes Drive
Charleston, West Virginia 25313
(304) 343-0316 tel
(304) 343-5146 fax

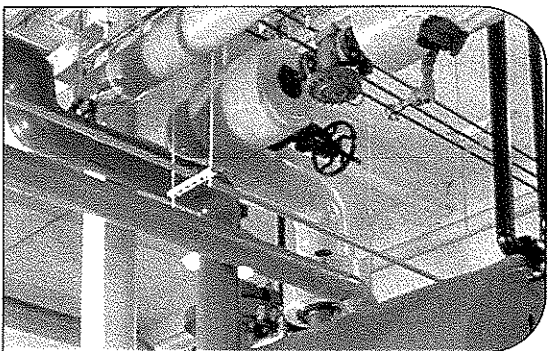
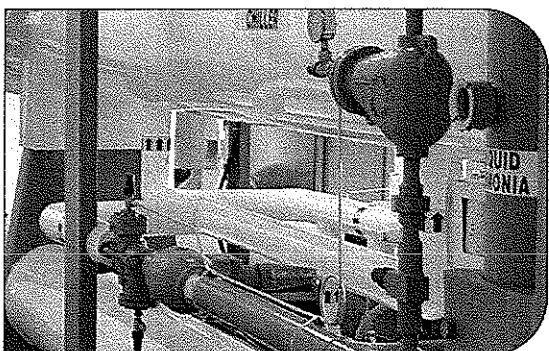
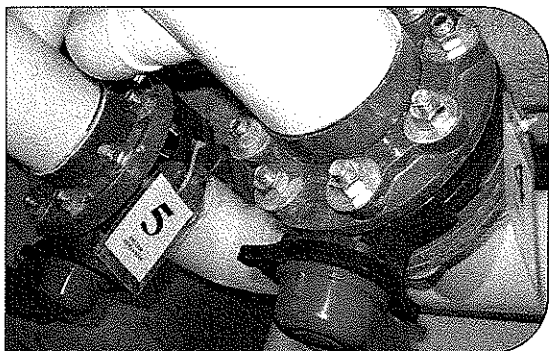
5 Riddle Court
Morgantown, West Virginia 26505
(304) 598-2558 tel
(304) 598-2472 fax

www.cma.wv.com

P L U M B I N G & P I P I N G

CMA Engineering experience includes:

- Sanitary Sewer Systems
- Storm Sewer Systems
- Natural Gas Distribution
- LP Gas Distribution
- Fuel-Oil Distribution
- Compressed Air Systems
- Vacuum Systems
- Chemical Waste Systems
- Process Water Systems
- Deionized Water Systems
- Domestic Water Systems
- Helium Distribution Systems
- Domestic Water Pumping Systems
- Sewage Pumping Systems
- Water Heating
- Automatic Fire Sprinkler Systems
- Standpipe Systems
- Fire Pumps, Storage Tanks, Service Mains
- Medical Gas Systems



(top) Split Rock Pools Snowshoe, WV
Piping & Pump Room

(middle) Memorial Ice Rink South Charleston, WV
Piping & Chilling

(bottom) Alderson Federal Correctional Facility Alderson, WV
Steam Piping

CMA
ENGINEERING

Clingenpeel/McBrayer & Associates, Inc.

824 Cross Lanes Drive
Charleston, West Virginia 25313
(304) 343-0316 tel
(304) 343-5146 fax

5 Riddle Court
Morgantown, West Virginia 26505
(304) 598-2558 tel
(304) 598-2472 fax

www.cma.wv.com

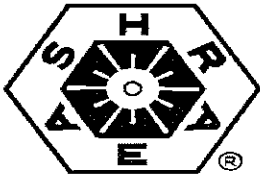
Professional Affiliations



Leadership in Energy &
Environmental Design
(LEED)



U.S. Green Building
Council
(USGBC)



American Society of
Heating, Refrigerating and
Air Conditioning Engineers,
Inc.,
(ASHRAE)



American Institute of
Architects— WV Chapter
Affiliate Member
(WVAIA)



National Fire
Protection Association
(NFPA)

ASPE

American Society Of
Plumbing Engineers
(ASPE)



MasterSpec
Specifications
(ARCOM)

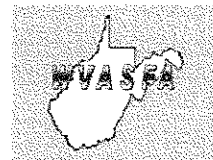


The
LIGHTING
AUTHORITY (IES)

Illuminating
Engineering Society



WV Society of
Healthcare Engineers
(WVSHE)



Business Partner



International Code Council (ICC)

CMA
ENGINEERING

P R O F I L E

Timothy Cox, P.E., NCEES

President
Mechanical Engineer

(304) 598-2558
tcox@cmawv.com

EDUCATION

University of Colorado
Boulder, Colorado
Degree: Mechanical Engineering B.S.

REGISTRATIONS/PROFESSIONAL AFFILIATIONS

Association of Energy Engineers-CBCP

Registered Professional Engineer in WV, VA, KY

CPD (Certified in Plumbing Engineering)

Member of ASHRAE

American Society of Plumbing Engineers

National Association of Fire Protection Engineers

WV Society of Healthcare Engineers

EXPERIENCE

Mr. Timothy Cox, President and Senior Mechanical Engineer of CMA Engineering brings 24 years of mechanical design experience to our clients. Mr. Cox has been project manager and project engineer for a variety of projects.

PROJECTS

West Virginia University
Open End Contract since 1999
Mountain Lair Plaza Renovations
Boreman HVAC/Plumbing/Fire Sprinkler
Upgrades
Soccer Stadium
Coliseum Life/Safety Renovations
Coliseum Locker Room Suites
Engineering Science Building Addition/
Renovations
Arnold Hall Fire Alarm/ FireSprinkler
Upgrades
Wrestling Training Facility

West Virginia University Hospitals
WV Eye Institute-MEP systems design for
new facility
Cheat Clinic-MEP design for new
clinical addition
WVUH Emergency Department-
HVAC, electrical, fire and
communication systems design for
new addition
Chestnut Ridge Hospital-various
MEPRenovations
Healthworks Rehab and Fitness -MEP
systems design for new facility

Mylan Pharmaceuticals, Morgantown, WV
Various projects including HVA plumbing,
fire sprinkler and controls for new office
building, fluid bed addition ,North plant
expansion, parking garage and weighing and
packaging.

CMA
ENGINEERING

Clingenpeel/McBrayer & Associates, Inc.

824 Cross Lanes Drive
Charleston, WV 25313
(304) 343-0316 tel
(304) 343-5146 fax

5 Riddle Court
Morgantown, WV 26505
(304) 598-2558 tel
(304) 598-2472

w w w . c m a w v . c o m

P R O F I L E

Daniel Lee Ellars, P.E.
LEED AP

Principal
(304) 343-0316
dellars@cmawv.com

EDUCATION

West Virginia University Institute of Technology
Montgomery, West Virginia.
Bachelors of Science in Electrical Engineering

West Virginia State University
Institute, West Virginia
Bachelors of Science in Business Administration

REGISTRATIONS/PROFESSIONAL AFFILIATIONS

Registered Professional Engineer in West Virginia

National Fire Protection Association (NFPA)

Institute of Electrical and Electronics Engineers (IEEE)

American Society of Heating, Refrigerating and Air-
Conditioning Engineers (ASHRAE)

EXPERIENCE

Mr. Daniel L. Ellars, Electrical Engineer for Clingenpeel/
McBrayer & Associates, Inc. brings 19 years of
electrical design experience to our clients. Mr. Ellars
has been a project manager and project engineer for a
variety of projects including commercial and industrial
facilities as well as for both power and
tele-communications utilities.

PROJECTS

Educational Experience

Jackson County (WV) Schools—Electrical
Upgrades & Expansions
Talcott Elementary School-Electrical Design
Fairdale Elementary School-Electrical Design

Hospital Experience

West Virginia University / Ruby Memorial Hospital
West Virginia Eye Institute—Electrical systems
design for new facility.
Thomas Memorial Hospital—Electrical systems
survey, upgrades and documentation.
Standby emergency power engine
generator replacement.

Military Experience

West Virginia Army National Guard
Eleanor (WV) Maintenance Center—Electrical
systems design for new facility.
Elkins Readiness Center-Electrical systems design
or new facilityf

Industrial Experience

Mylan Pharmaceuticals
Mylan Office & Lab Buildings—various electrical
systems designs for new, existing and expanded
facilities including new 23kV/12kV switchyard
and grounding plain layout.



Clingenpeel/McBrayer & Associates, Inc.

824 Cross Lanes Drive
Charleston, WV 25313
(304) 343-0316 tel
(304) 343-5146 fax

5 Riddle Court
Morgantown, WV 265
(304) 598-2558 tel
(304) 598-2472

P R O F I L E

James A. Kerns Mechanical/Electrical Designer

(304) 343-0316
jakerns@cmawv.com

EDUCATION

West Virginia State College
Institute, West Virginia
Degree: Bachelor of Science in Industrial
Technology/Building Construction

REGISTRATIONS/PROFESSIONAL AFFILIATIONS

Member of ASHRAE

EXPERIENCE

Mr. James A. Kerns has over 32 years experience in Mechanical and Electrical engineering design. He has been responsible for design projects in the educational, commercial, and health care fields.

Mr. Kerns has been a great asset to Clingenpeel/McBrayer & Associates. His knowledge and experience enables him to complete project designs in a clear and concise manner and in a timely fashion.

PROJECTS

Kanawha County Schools

George Washington High School-HVAC Renovations
George Washington High School-Classroom Additions
Horace Mann Middle School-HVAC Renovations
Elkview Middle School-Classroom Additions
Elkview Middle School-Fire Alarm System
Ruffner Elementary School-Classroom Additions
Point Harmony Elementary School-Activity Building

Concord College

Athens, West Virginia — various renovation projects throughout the campus, which include Twin Towers Fire Alarm, Twin Towers Elevator Renovation, Alexander Arts Center Chiller Replacement and new Chapel

U.S. Postal Service

Open End Contract Since 1993, which encompasses numerous Post Office Renovations, new Post Offices, and new Postal Maintenance Facilities. Mr. Kerns has been Project Manager for over 65 projects for the U.S. Postal Service.

Yeager Airport

New Parking Garages
New Emergency Generator
Electrical Upgrades
Fire Alarm System Upgrade

CMA
ENGINEERING

Clingenpeel/McBrayer & Associates, Inc.

824 Cross Lanes Drive
Charleston, WV 25313
(304) 343-0316 tel
(304) 343-5146 fax

5 Riddle Court
Morgantown, WV 26505
(304) 598-2558 tel
(304) 598-2472

w w w . c m a w v . c o m

P R O F I L E

Matt Corathers, E.I. Mechanical Designer

(304) 598-2558
mcorathers@cmawv.com

EDUCATION

West Virginia University
Bachelor of Science -Mechanical Engineering

PROFESSIONAL DEVELOPMENT

Successfully passed Fundamentals of Engineering Exam

EXPERIENCE

Matt joined the staff of CMA Engineering in 2008 having previously worked for Whitman, Requardt and Associates in Baltimore, MD.

PROJECTS

West Virginia University

Mechanical design for new two-story child care facility

University High School, Morgantown, WV

Mechanical design for renovations/ upgrades to the HVAC systems

Randolph County Building

Mechanical design for completion of two story addition and modifications of the existing second floor to be used by the Family Court

Monongalia County Family Court

Mechanical design for renovations to 4,850sf in existing court facility

Veterans Hospital, Clarksburg, WV

Mechanical design for renovations to Dental Lab

Monongalia General Hospital

Evaluation of kitchen gas systems
Mechanical design for renovations to IT workroom cooling



Clingenpeel/McBrayer & Associates, Inc.

824 Cross Lanes Drive
Charleston, WV 25313
(304) 343-0316 tel
(304) 343-5146 fax

5 Riddle Court
Morgantown, WV 26505
(304) 598-2558 tel
(304) 598-2472

www.cmawv.com

P R O F I L E

Larry Weese Mechanical/Plumbing Designer

(304) 343-0316
lweese@cmawv.com

EDUCATION

West Virginia University
Morgantown, West Virginia
Degree: Division of Forestry BS,MS

PROJECTS

Medical Facilities Experience

Charleston Area Medical Center

Women & Children's Hospital- Renovations to
Emergency Room

Hess Medical Office Building-New Facility

Pinewood Medical Office Building-Renovations

Southern West Virginia Hospice-New Facility

NorthGate Doctor's Office Building-New Facility

WV Department of Health and Human Resources

Office of Chief Medical Examiner, Charleston
New Facility Mingo County

Emergency Response Facilities

Randolph County 911-New Facility

Mason County 911-New Facility

Raleigh County 911-New Facility

Orchard Manor Fire Station-New Facility

Industrial Experience

Standard Laboratories-Laboratory Addition

Dow Process Control-New Facility

Diamond Electric-Expansion

Commercial Experience

Bobcat of Advantage Valley-New Facility

Allegheny Springs Restaurant

PROFESSIONAL DEVELOPMENT

Various seminars and technical sessions

EXPERIENCE

Mr. Larry Weese, Mechanical Designer for
Clingenpeel/McBrayer & Associates, Inc. brings
18 years of mechanical design and project
management experience to our clients.



Clingenpeel/McBrayer & Associates, Inc.

824 Cross Lanes Drive
Charleston, WV 25313
(304) 343-0316 tel
(304) 343-5146 fax

5 Riddle Court
Morgantown, WV 26505
(304) 598-2558 tel
(304) 598-2472

www.cmawv.com

Project Profiles

Fire Protection



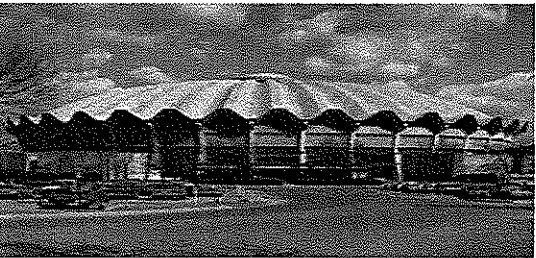
Boreman Dormitory-West Virginia University
CMA Engineering provided mechanical, electrical and plumbing design services for upgrades to the automatic sprinkler and fire alarm systems.
Construction costs: North Hall \$893,000.00. South Hall \$960,000.00.



Concord University, Athens, WV
CMA Engineering provided mechanical, electrical and plumbing design services for renovations to fire sprinkler systems at North Tower, South Tower, Wilson and Woodell dormitories. Construction costs: \$1,398,000.00



Arnold Hall-West Virginia University
CMA Engineering provided mechanical, electrical and plumbing design services for upgrades to the sprinkler and fire alarm systems, which included all floors of the original building and the two levels of basement cubicle storage in the addition.
Construction costs: \$700,000.00



The Coliseum-West Virginia University
CMA Engineering provided mechanical, electrical and plumbing design services for upgrades to the sprinkler and fire alarm systems. Construction costs: \$2,000,000.00.



Yeager Airport, Charleston, WV
CMA Engineering provided mechanical, electrical and plumbing design services for new fire alarm system.
Construction costs: \$98,640.00.

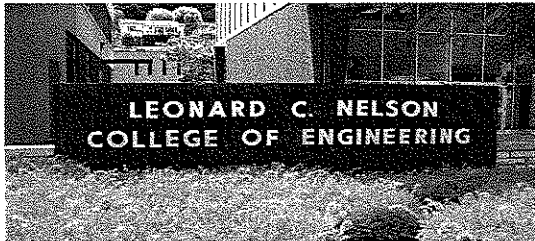
Project Profiles

Fire Protection



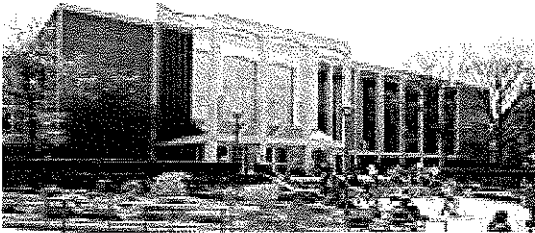
Old Main Building-WVU Institute of Technology

CMA Engineering provided engineering services for the installation of the new fire sprinkler system, fire pump, fire pump house and renovations to the fire alarm system and electrical system. Construction costs: \$596,700.00.



Engineering Science Building-WVU Institute of Technology

CMA Engineering provided mechanical, electrical and plumbing design services for new fire sprinkler system and renovations to the fire alarm system and related electrical systems. Construction costs: \$311,690.00.



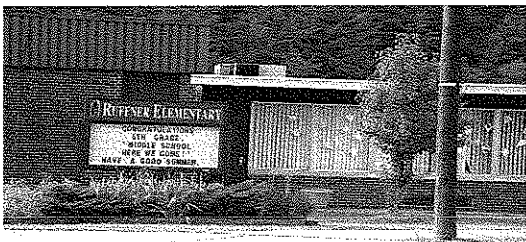
Mountain Lair, West Virginia University

CMA Engineering provided mechanical, electrical and plumbing design services for the installation of new elevator and stair adjacent to student center, lighting modifications of plaza and design of fire sprinkler system for the parking garage.



Hayes Middle School, St. Albans, WV

CMA Engineering provided mechanical, electrical and plumbing design services for new fire alarm system for 75,726sf facility. Construction costs: \$56,000.00



Ruffner Elementary School, Kanawha County

CMA provided engineering design services for the addition of 6 classrooms (4,124sf), renovation of approximately 4,400sf and renovation to the sprinkler system and fire alarm system throughout the entire facility (24,084sf), as well as, electrical upgrade to the school. MEP Construction Cost \$229,650.00

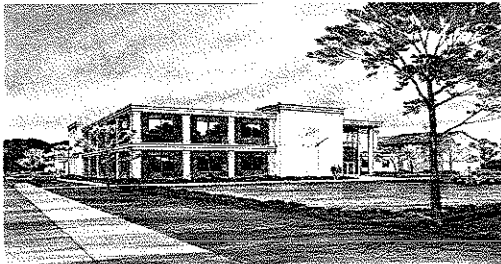
Project Profiles

Recreational Facilities



Jefferson County Community Center

CMA Engineering provided mechanical, electrical and plumbing design services for developing the design criteria for new 18,900sf community center which included gymnasium with bleacher seating, lobby area, activity rooms, office space, a full service kitchen, storage and comfort facilities.



Ayash Community Center, St. Albans

CMA Engineering provided design for HVAC, plumbing, fire sprinkler, fire alarm systems, communication systems, lighting and electrical power for new 26,900sf community center which included gymnasium, wrestling room, fitness room, locker rooms and an open area for aerobics, dance and gymnastics.



Jackson's Mill

CMA Engineering providing mechanical, electrical and plumbing design services for renovations to the Assembly Hall, Northern Panhandle Cottage, Lewis Cottage, Dining Hall and the Air Strip Buildings.



Canaan Valley Resort-Ski Base Lodge

CMA Engineering provided design services for the HVAC, electrical and plumbing systems for the new guest service facility.



North Bend State Park

CMA Engineering provided mechanical, electrical and plumbing design services for renovations to the Lodge.

Project Profiles

Recreational Facilities



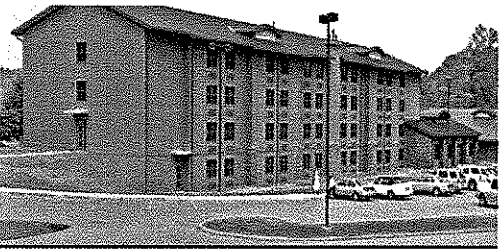
Beech Fork State Park

CMA Engineering providing mechanical, electrical and plumbing design services for 8 new cabins, a new bathhouse, 237 camping sites and sewage treatment system.



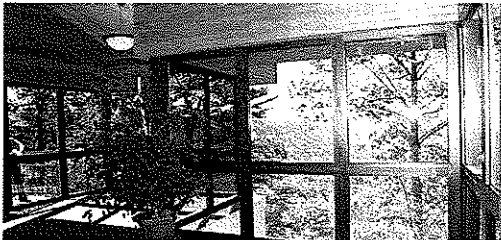
Snowshoe Mountain Resort

CMA Engineering provided design for HVAC, electrical, plumbing, fire alarm and fire sprinkler systems for new Allegheny Springs Lodge. CMA also provided engineering services for the fit-out of such restaurants as the Foxfire Grille, Junction Restaurant and Village Bistro located at the Village in Snowshoe.



Chief Logan State Park

CMA Engineering provided mechanical, electrical, plumbing and fire protection design services for the new lodge and the new conference center.



New River Gorge

CMA Engineering provided mechanical, electrical and plumbing design services for the new Visitors Center at the New River Gorge.



Cacapon State Park

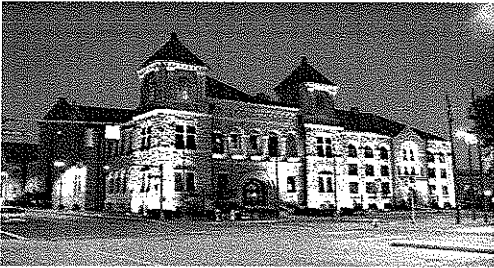
CMA Engineering providing design services for the electrical renovations to the Lodge.

Project Profiles



State of West Virginia House and Senate Offices

CMA is currently providing mechanical, and electrical design services for renovations to the first and second floors' HVAC systems at Building #1 at the State Capitol Complex.



Kanawha County Courthouse

CMA has provided mechanical, electrical and plumbing engineering design services for Kanawha County since 1983. Projects include MEP renovations to main courthouse, toilet renovations, parking garage, MEP renovations to the judicial annex, renovations to the Law Master offices, and design of exterior lighting.



Kimball War Memorial, Kimball, WV

CMA Engineering provided mechanical, electrical and plumbing design services for the restoration of the historic memorial which was destroyed by fire in 1991. Registered with the National Historical Society.



Putnam County Courthouse

CMA has provided mechanical, electrical and plumbing design services for the new courthouse facility including design of the 911 center. CMA also provided mechanical, electrical and plumbing design services for renovations to the old courthouse including ADA modifications.



Doddridge County Courthouse

CMA provided design services for the upgrades of the mechanical, electrical, plumbing, fire sprinkler /fire alarm and communication systems for the second and third floors of the facility.

Project Profiles

Renovations/Upgrades



Davis Memorial Hospital

CMA Engineering has provided mechanical, electrical, plumbing, and fire protection engineering services for various projects at DMH including the new operating room suite, relocating endoscopy unit, updating the fire suppression system in the computer room and design of the clean room in the Pharmacy.



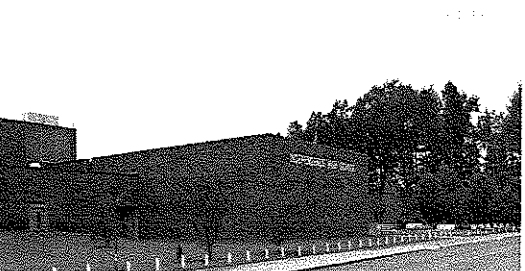
Engineering Science Building , WVU

CMA Engineering provided design of new HVAC, plumbing, electrical, fire protection systems within existing space to provide three distinct clean room space (4,500sf)for WVU Engineering Department for conducting experiments on new technology. Project also include design of 2,000sf new mechanical roof top penthouse.



Shady Spring High School, Raleigh County

CMA provided HVAC, electrical, plumbing, fire alarm, data and communication design services for the addition of five classrooms, art studio and toilets. (MEP Construction Cost \$414,359.)



Independence High School, Raleigh County

CMA is currently providing mechanical, electrical, plumbing, fire alarm, data and telephone design services for the addition of six new classrooms, art studio and toilets. (MEP construction Cost \$414,359..) CMA also provided design for the renovation to the HVAC system. (MEP Construction Cost \$1,135,000)

Project Profiles

New Construction



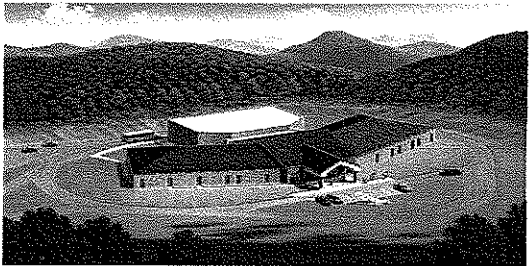
West Virginia University Child Care Center

CMA Engineering provided the design of HVAC, fire sprinkler, fire alarm, plumbing, electrical lighting/power and communications systems for the new two story child care facility at 201 Laurel Street, Morgantown, WV.



Sissonville Middle School, Kanawha County

CMA Engineering provided mechanical, electrical, plumbing, sprinkler, and data/communication/alarm/control engineering design services for the new, approximately 80,000sf facility, consisting of administrative areas, commons, auditorium, media/technology, sixth, seventh and eighth grade educational areas, laboratories, special education, food services and physical education areas. CMA is currently providing design for the addition of the fifth grade wing.



Talcott Elementary School, Summers County

CMA Engineering provided construction documents for HVAC, plumbing, fire sprinkler, fire alarm, communication, lighting and electrical power systems for new 26,000sf elementary school, consisting of administration areas, pre-kindergarten to fifth grade classrooms, special education, art/music, multi-purpose, dining kitchen and toilet rooms.

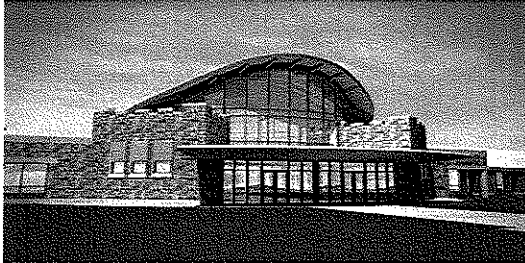


Pikeview Middle School, Mercer County

CMA Engineering provided design of HVAC, plumbing, fire alarm, fire sprinkler, electrical, lighting, communications, audio/visual and CCTV systems for new 75,000sf middle school comprised of a main wing with offices and gymnasium and a three-story classroom wing.

Project Profiles

New Construction



WVANG Summersville Readiness Center

CMA Engineering provided engineering services for the design of mechanical, electrical and plumbing systems for the 42,000sf readiness center. This facility also features areas for use by the City of Summersville for events throughout the year.



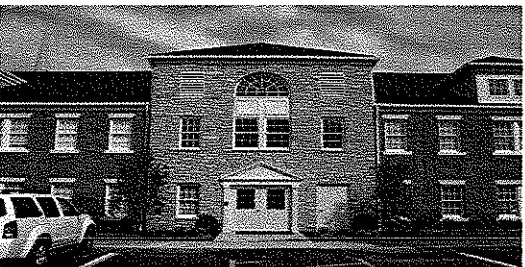
NRAO Greenbank Observatory Visitor's Center

CMA Engineering provided mechanical, electrical, plumbing, fire protection and communication systems design for new visitor's science center.



Tamarack Caperton Conference Center

CMA Engineering provided mechanical, electrical, plumbing, fire protection and communication systems design for the 22,450sf addition to the Caperton Center. CMA provided engineering services for the original construction of the Tamarack facility.



Jefferson Place, Charleston, WV

CMA Engineering provided mechanical, electrical, plumbing and fire protection design services for new medical apartment complex consisting of 24 units of one, two and three bedroom apartments.

Project Profiles

New Construction



WANG Lewisburg Readiness Center

CMA Engineering provided mechanical, electrical and plumbing design services for a 37,000sf readiness center that includes a vehicle maintenance bay.



WANG Eleanor Maintenance Center

CMA Engineering provided mechanical, electrical and plumbing, design services for a 132,000sf maintenance facility to house combined support maintenance shop and Class IX USPFO warehouse. CMA has continued to provide engineering services for the addition of the paint booth, entrance guard house, MCOFT pad, and covered storage.



Mylan Pharmaceuticals, Morgantown, WV

CMA Engineering provided mechanical, electrical, plumbing and fire protection systems design for new corporate office in Morgantown, WV. CMA Engineering also provided engineering services for the 500,000sf addition to the plant facility.

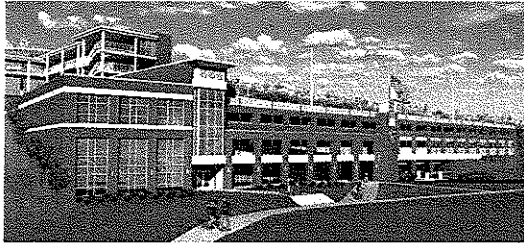


Comvest Office Building

CMA Engineering provided mechanical, electrical and plumbing design services for new two-story, 5,400sf office facility in Bridgeport, WV.

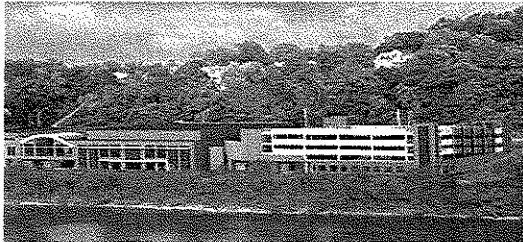
Project Profiles

New Construction Design Build



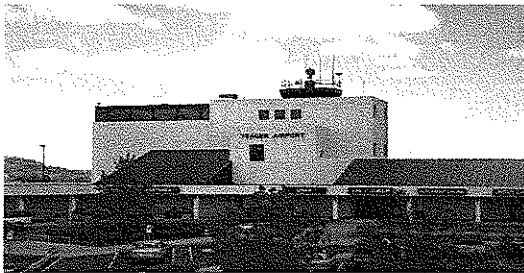
West Virginia University Intermodal Parking

CMA Engineering is provided engineering services to develop performance criteria data for a new intermodal parking facility located on the Health Sciences Campus in Morgantown, WV. The initial phase of the project is to create a 500 space parking garage expandable to 1500 spaces with offices, retail and storage space.



Morgantown Events Center

CMA Engineering provided engineering services for the criteria development and preparation of RFP for Design/Builders for new 80,000sf multi-purpose event center and parking structure.



Yeager Airport-Parking Garage

CMA Engineering provided mechanical, electrical and plumbing design services for developing the design criteria for the new design/build multi-tiered parking facility with new toll booths and employees comfort area.



WV Department of Environmental Protection

CMA Engineering provided mechanical, electrical, plumbing and fire protection design services for the design/build construction of the new consolidated DEP office in Charleston, WV. Building is a three-story facility of approximately 180,000sf with a 650 car parking area. This facility is registered as a **LEEDS construction project**.



Residence Halls-University of Charleston

CMA Engineering provided mechanical, electrical, plumbing and fire protection design services for the design/build of two new four-story Dormitories, constructed during the summers of 2004 and 2005. In 2006, CMA provided design for the addition of a wing to the second dormitory.

CMA
ENGINEERING

References

Mechanical/Electrical/Plumbing



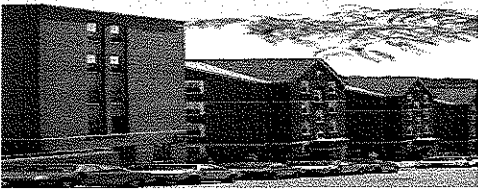
Kanawha County Schools
3300 Pennsylvania Avenue
Charleston, WV 25302
Contact: Mr. Charles Wilson
(304) 348-6148



Yeager Airport
100 Airport Road
Charleston, WV 25311
Contact: Mr. Rick Atkinson
(304) 344-8033



Concord University
P.O. 1000
Athens, WV 24712
Contact: Mr. John Ferguson
(304) 384-5233



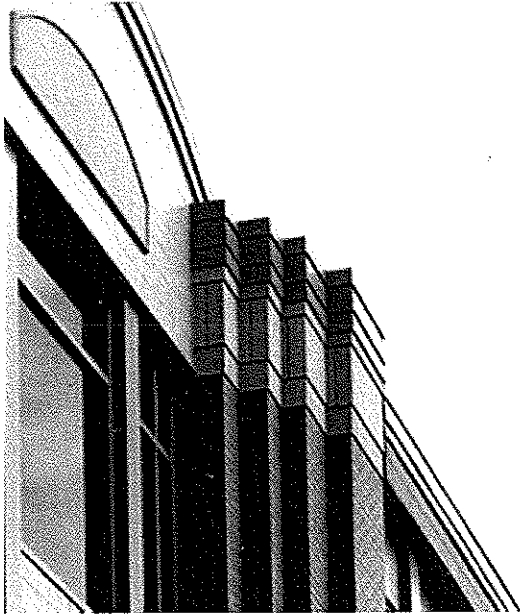
West Virginia University
979 Rawley Lane
Morgantown, WV 26505
Contact: Mr. Eric Rosie
(304) 293-2853



West Virginia University
979 Rawley Lane
Morgantown, WV 26505
Contact: Tony Napolillo
(304) 293-7478



Mylan Pharmaceuticals
P.O. Box 4310
Morgantown, WV 26504
Contact: Mr. J. J. Dotson
(304) 599-2595



N Visions has designed and administered the construction of over 200 million dollars of projects in West Virginia since 1985.

N Visions has experience in a wide range of architectural projects including educational, institutional, healthcare, housing, public and private facilities for developers and non-profits, historic preservation, and residential properties.

Design is the heart of a successful project. It is important to provide the proper aesthetics, functional relationships, space planning, and to be a good neighbor in the community and meet the project budget. N Visions will make certain that your project is successful for both the owner and the community.

FACILITIES PLANNING AND PROGRAMMING

Determining the actual needs of the client and how to adapt them to the available environment is essential for a successful project. N Visions will assist in defining the needs and desires of the client/user prior to the design of the project.

SITE EVALUATION

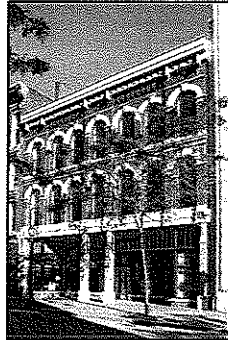
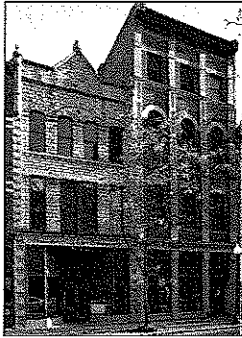
N Visions Architects can provide studies of potential project sites for evaluation by the Owner. Geotechnical, utility, environmental, and property utilization will be evaluated, to allow the Owner to make a site selection decision.

EXISTING FACILITIES EVALUATION

Use of existing facilities requires an educated understanding of potential opportunities and risks that may be encountered. N Visions will assist the Owner in determining how to best enhance the use and reduce the risks to reach a solution.

CODE COMPLIANCE

The State Fire Marshal, School Building Authority, U.S. Army Corps of Engineers, State Historic Preservation Office, and other agencies have specific requirements that must be addressed in all building projects. N Visions has worked with these agencies, and others, on numerous projects, and is familiar with their personnel and regulations. N Visions has a positive working relationship with these agencies, and in many cases involves them early in the design process, which translates into benefits to the Owner.



WVSA Awards

- Trans Allegheny Books, Charleston, WV

WVSA - Honorable Mention

- McCabe-Henley Properties, Inc.
Charleston, WV

**Charleston Renaissance Corporation
Best Development**

- Capitol City Building, Charleston, WV
- Trans Allegheny Books, Charleston, WV
- 200 Hale Street, Charleston, WV
- The Gates Building, Charleston, WV
- 210 Hale Street, Charleston, WV



**WV Home Building Association
Best Multi-Family Developer**

- Governor's Court Apartments,
Charleston, WV
- Woodbridge Condominiums,
Teays Valley, WV



**City of Charleston
Distinguished Design Development**

- Summers Square, Charleston, WV



HUD – Project of the Year 2000

- YWCA Transitional Housing
Charleston, WV

**Associate Builders and Contractors, Inc.
2005 Excellence in Construction**

- YWCA Senior Housing
Charleston, WV



**AIA West Virginia 2008 Craftsmanship
Award for Excellence in Craftsmanship**

- Sissonville Middle School

REFERENCES

Chuck Wilson, Kanawha County Board of Education
3300 Pennsylvania Avenue, Charleston, WV 25302, 304-348-6148

New Sissonville Middle School, Sissonville, WV
South Charleston Middle School Elevator, Windows, Toilet Renovation
Montrose Elementary HVAC and Window Replacement
Nitro High School HVAC and Toilets Renovation
Herbert Hoover High School Addition and Renovation
Elkview Middle School Addition and Renovation
South Charleston High School Addition and Renovation
George Washington High School Addition and Renovation
Auxiliary Gyms – Four County high schools
Piedmont Elementary Addition and Renovation

Brooks McCabe, McCabe • Henley
P. O. Box 11108, Charleston, WV 25339, 304-342-4415

Summers Square, Summers and Quarrier streets, Charleston, WV
Capitol City Building, Capitol and Quarrier streets, Charleston, WV
One Kenton Drive, Northgate Office Park, Charleston, WV
KB & T Building, Capitol Street, Charleston, WV
The Strand, Hale Street, Charleston, WV

Rick Atkinson, Central West Virginia Regional Airport Authority,
100 Airport Road, Suite 175, Charleston, WV, 304-344-8033

Yeager Airport Parking Facility
Yeager Airport, John D. Rockefeller IV Terminal
Passenger Access Control and ADA Accessibility



A · R · C · H · I · T · E · C · T · S

PROJECT TEAM



GEORGE M. SOLTIS, AIA, NCARB
Principal/ President

Academic Experience

Bachelor of Architecture with Distinction
University of Kentucky – 1977
Conservation USA – 2007

Registration

NCARB No. 55,660
Active: West Virginia, Ohio, Virginia, Kentucky
Inactive: Tennessee

Professional Associations

AIA/WV West Virginia
AIA American Institute of Architects

Civic Organizations

Boy Scouts of America,
Committee Member,
South Charleston
Boy Scouts of America, Order of the Arrow,
Central Region C4B,
Associate Advisor
Health Appeals Board,
City of South Charleston

Responsibility

Principal-in-Charge, Administration/Design
Principal and Owner of N Visions

Project Experience

Educational

New Sissonville Middle School
Herbert Hoover High School
Addition/Renovations
Sissonville Branch, Kanawha County Library
George Washington High School
Addition/Renovations
South Charleston High School
Additions/Renovations
Elkview Middle School Additions/Renovations
South Charleston Public Library
Addition/Renovation
Kanawha County Schools Football Fields
Bleachers and Renovations



N VISIONS

A · R · C · H · I · T · E · C · T · S



Commercial

Ream Interests Office Building
Tri-State Racetrack & Gaming Center
Summers Square Office Building –
One Kenton Drive/Northgate Office Building
Capitol City Building/Renovation/Restoration

Health Care –

Over 25 years Health Care Experience

IRC Rehabilitation Clinic – South Charleston, WV
Stickler Medical Office Building – Charleston, WV
St. Mary's Hospital – Huntington, WV
Montgomery General Hospital – Montgomery,
WV
St. Joseph's Hospital – Buchannon, WV

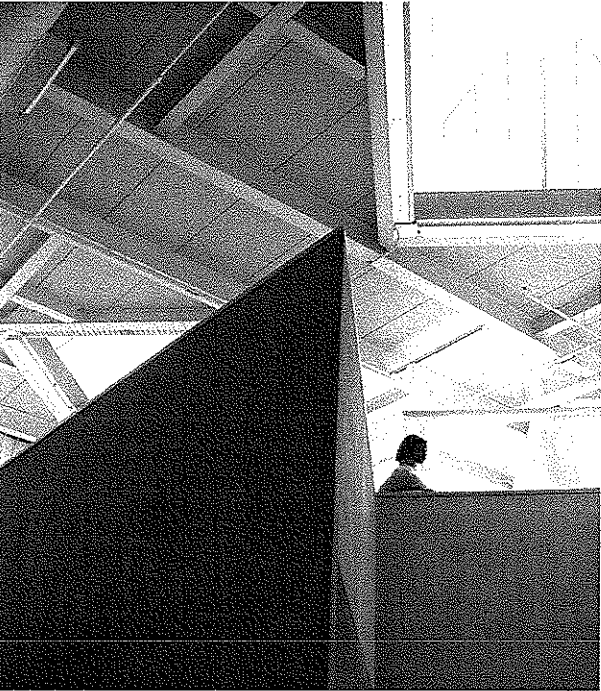


Public/Government

New United States Postal Facilities—
Hurricane, WV
Martinsburg, WV
Bluefield, WV
Princeton, WV
Beckley, WV

Historic Architecture

Historic Architect,
Meeting NPS 36CFR61.9 WV



Restoration of West Virginia
Governor's Mansion Porch
Criel Mound Park Master Plan
Restoration/Renovation of
Criel Mound
Locomotive Shelter,
Chief Logan State Park
Gates Building, Charleston, WV
Renaissance Tower, Charleston, WV
USPS Point Pleasant, WV
USPS Bluefield, WV



**JAMES R. KING, AIA, NCARB, LEED AP
Architect**

Academic Experience

Masters of Architecture/1991/Virginia Polytechnic
Institute and State University, Blacksburg, VA
B.S./Business Administration/Computer
Science/1987/Marshall University, Huntington, WV

Registration

N.C.A.R.B. No. 48310
Active: West Virginia, Maryland, Massachusetts,
Ohio, Rhode Island

Professional Affiliations

AIA/WV

Responsibility

Design and Contract Administration

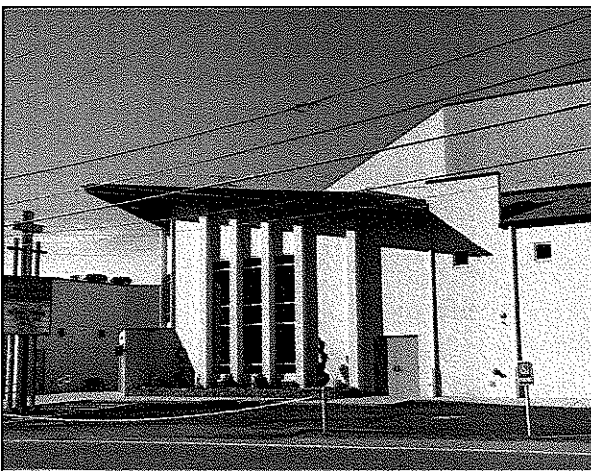
Educational

Conley Hall Study, West Virginia University
Institute of Technology
Campus Master Plan, West Virginia University
Institute of Technology
New Diesel Technology Building,
Community and Technical College at WVU
Institute of Technology –



Commercial

Motion Masters Film and Video Production –
Charleston, WV
Animal Care Associates –Charleston, WV
Upper Kanawha Valley Technology Center –
Montgomery, WV

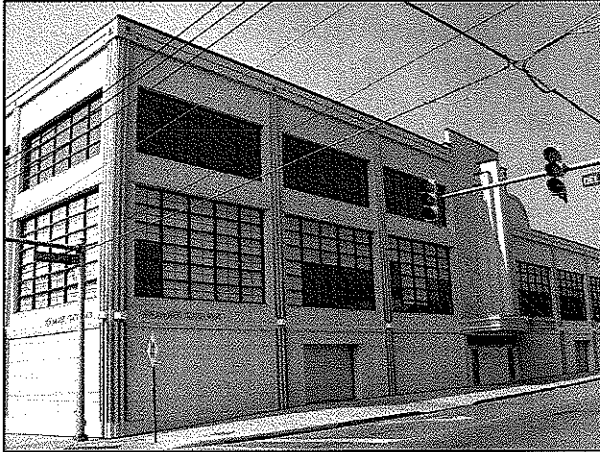


Public/Government

United States Post Office – Martinsburg, WV
Montgomery Streetscape Preliminary Study –
Montgomery, WV
McDowell County Courthouse – Welch, WV

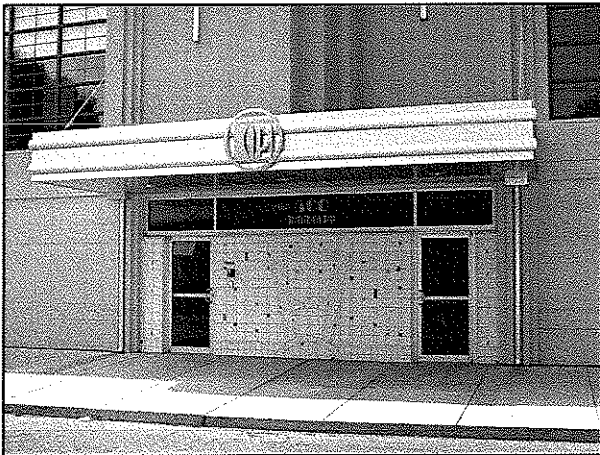
Historic Architect

Historic Architect meeting NPS 36CFR61.9 WV
Historic Residential Properties –
Charleston, WV



Housing

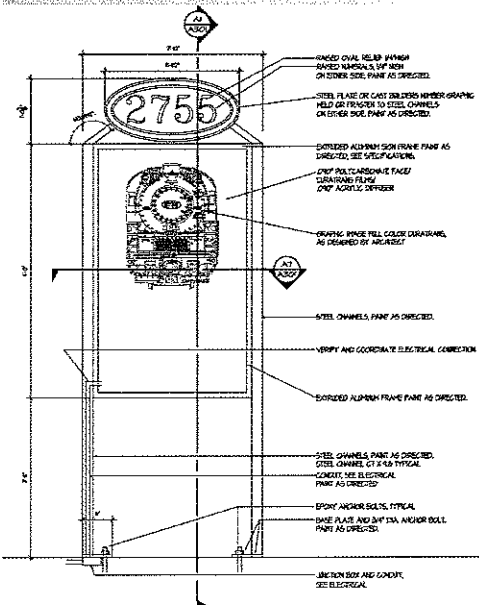
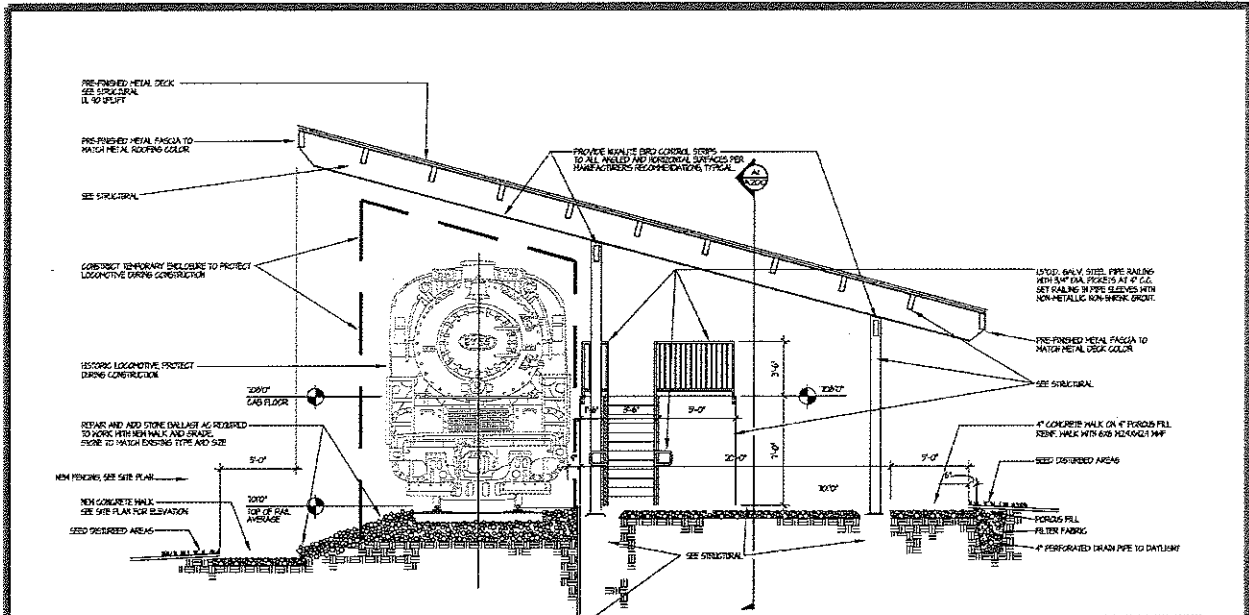
YWCA Senior Housing – Charleston, WV
Oakfield Apartments, Fairfield Properties –
Bethesda, MD
Springfield Apartment Clubhouse Renovations –
Fairfield Properties, Cranston, RI
Colonial Village Apartments Egress Stair
Renovations
Fairfield Properties – Plainville, MA
University Heights Clubhouse, Fairfield Properties
Providence, RI
Various Projects, Carmel Properties –
Washington, DC
Calwell Law Office – Charleston, WV



Churches

Christ Church United Methodist –
Charleston, WV
Maranatha Fellowship – St. Albans, WV
Covenant House – Charleston, WV
Family Worship Center – Chesapeake, WV

CHIEF LOGAN LOCOMOTIVE SHELTER



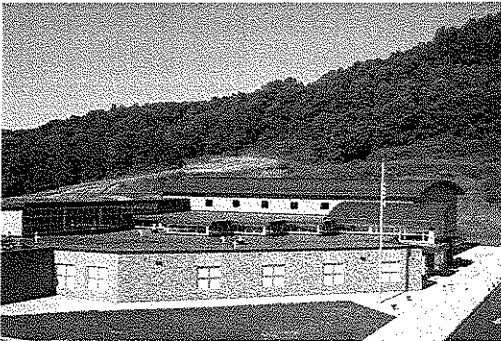
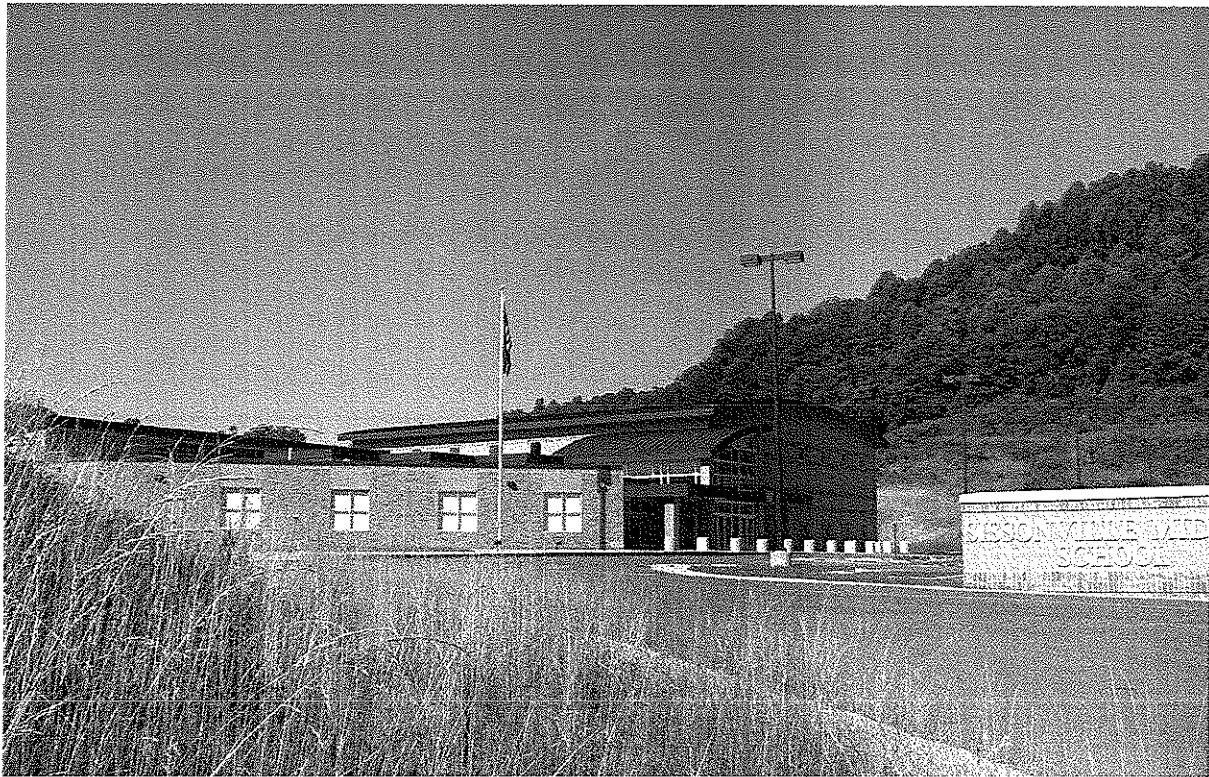
Chief Logan State Park
C & O Locomotive 2755
Locomotive Shed and Displays

An outdoor protected railroad
themed shed to protect the
recently restored 2755
Locomotive, ADA accessible with
interpretive historical display and
information kiosks.

Completion:

Pending

SISSONVILLE MIDDLE SCHOOL



Sissonville Middle School
5950 Sissonville Road
Sissonville, West Virginia

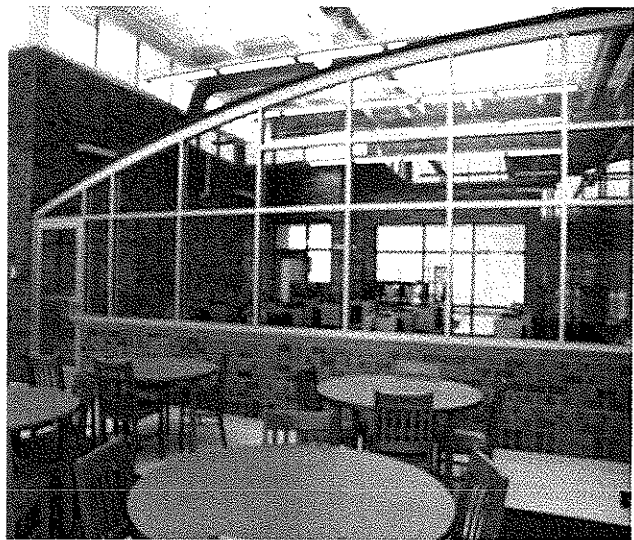
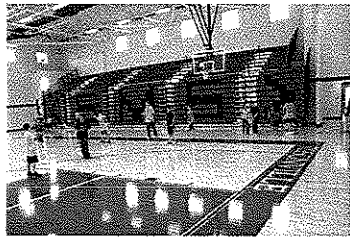
New construction consisting of classrooms, gymnasium, commons/cafeteria, kitchen, media center, administrative offices, band/choir room, toilets, and related site work

Size: 70,000 sf
Cost: \$ 17,000,000
Completion: 2007

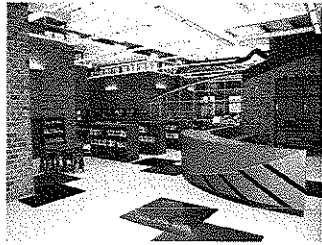
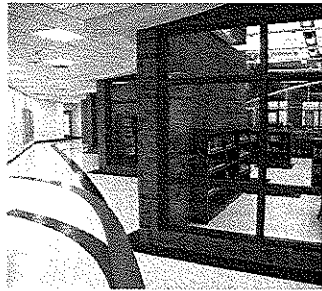
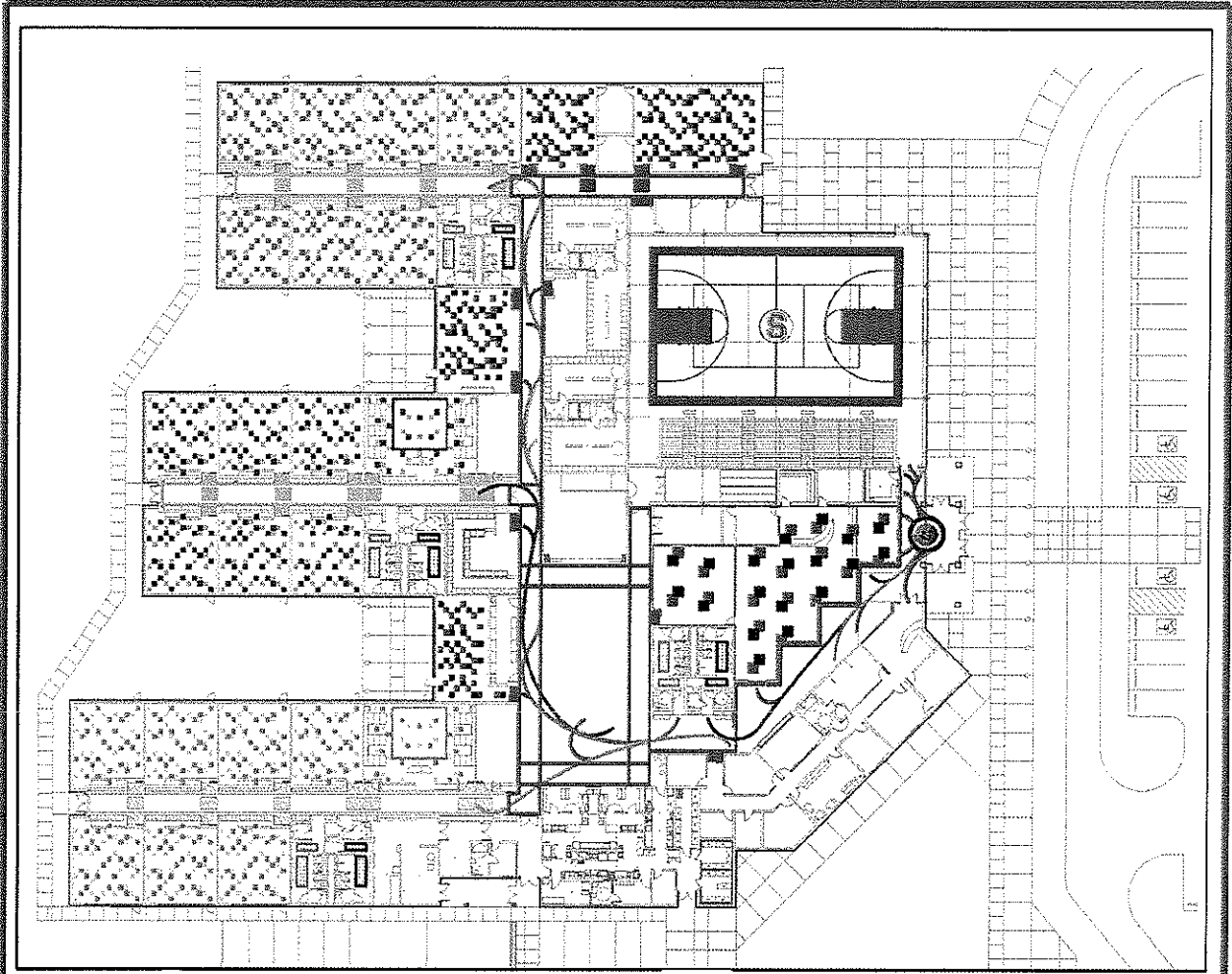
 ONVISIONS

A · R · C · H · I · T · E · C · T · S

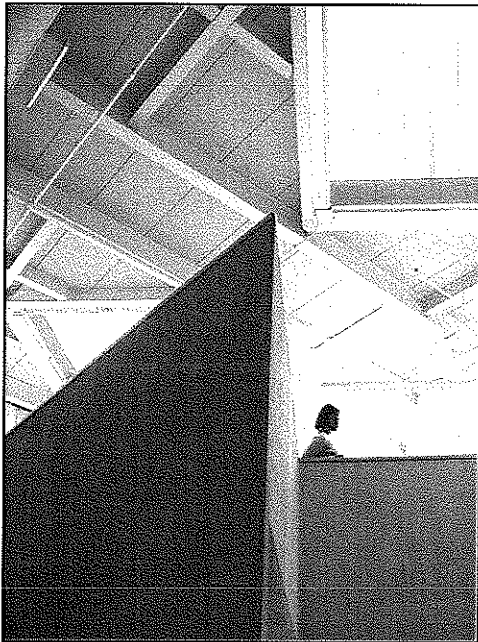
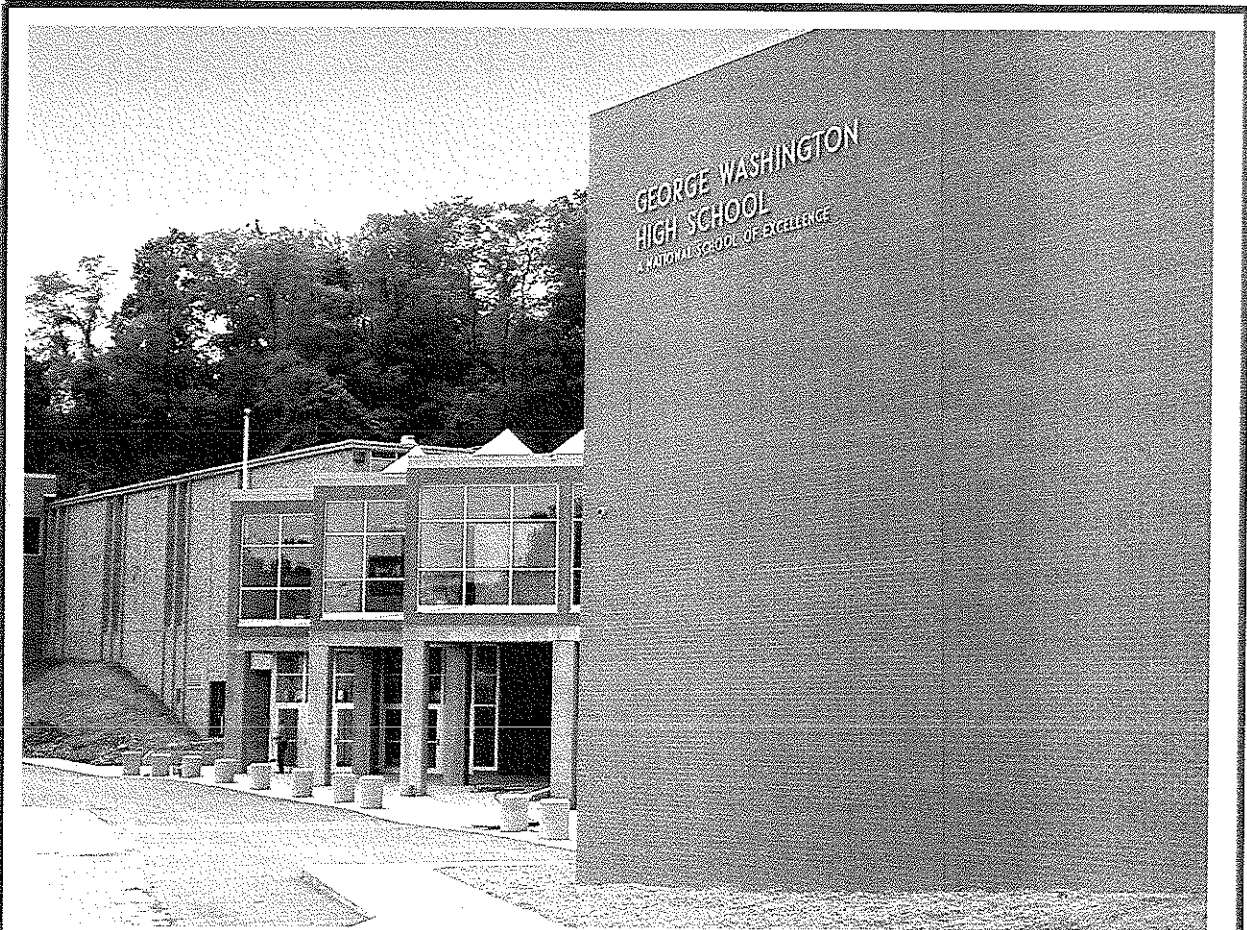
SISSONVILLE MIDDLE SCHOOL



SISSONVILLE MIDDLE SCHOOL



GEORGE WASHINGTON HIGH SCHOOL



George Washington High School
1522 Tennis Club Drive
Charleston, West Virginia

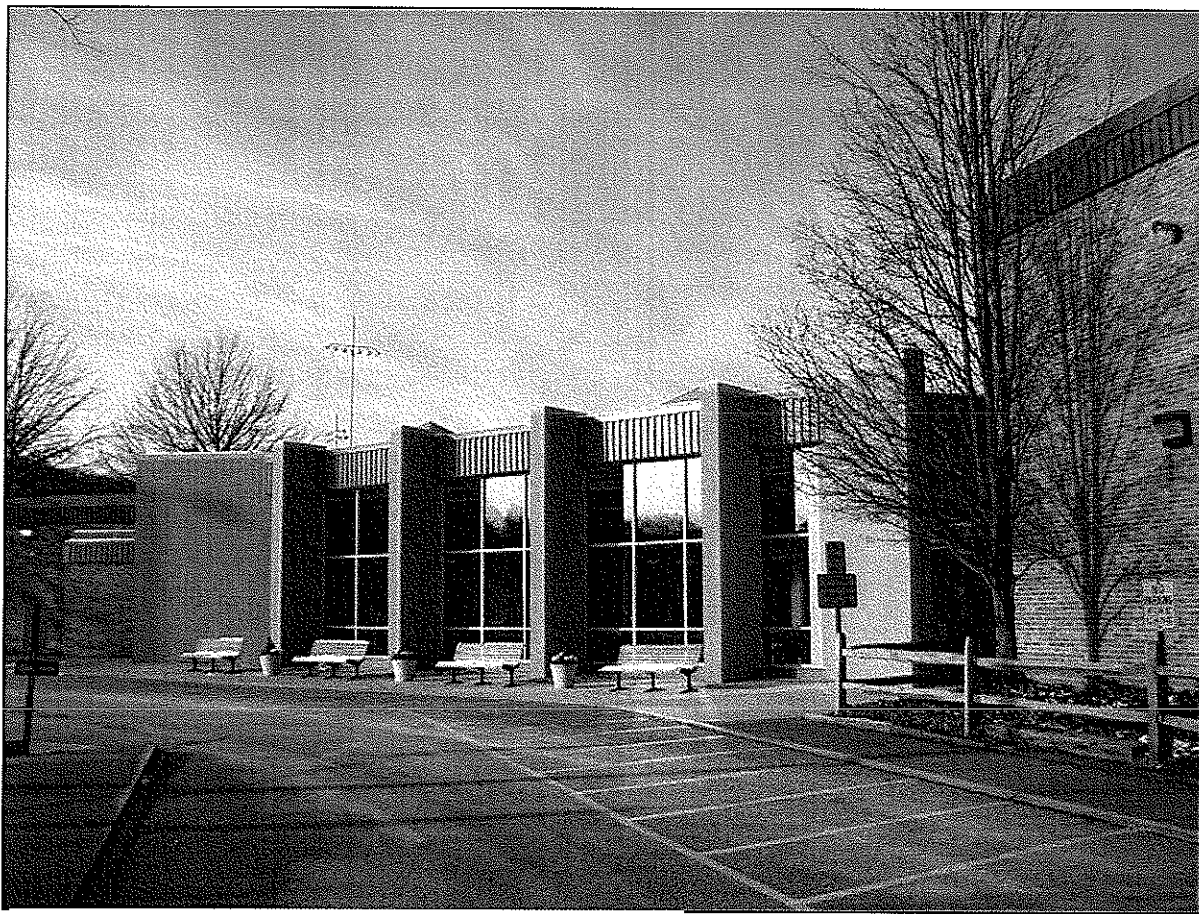
New classroom wing with 15 classrooms, two gang toilets, additional commons area with a new entry, an auxiliary gym, and renovations to existing office area, lower level classrooms, library, and miscellaneous area for teacher offices.

Size: Addition /renovation	35,462 sf
	9,000 sf
Construction Cost:	\$ 3,400,000
Completion:	2002

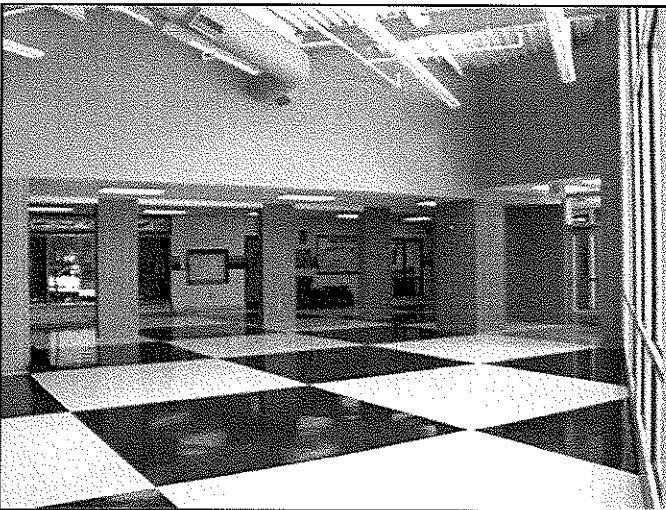
ONVISIONS

A·R·C·H·I·T·E·C·T·S

SOUTH CHARLESTON HIGH SCHOOL



Commons Addition



Commons Area

South Charleston High School
One Eagle Way
South Charleston, West Virginia

Commons addition, classroom
addition, dining addition and
renovation, science labs

Size: Addition 19,042 sf
Renovations 2,858 sf
Cost: \$ 2,000,000
Completion: 2000

VISIONS

A · R · C · H · I · T · E · C · T · S

SOUTH CHARLESTON PUBLIC LIBRARY



Before



After

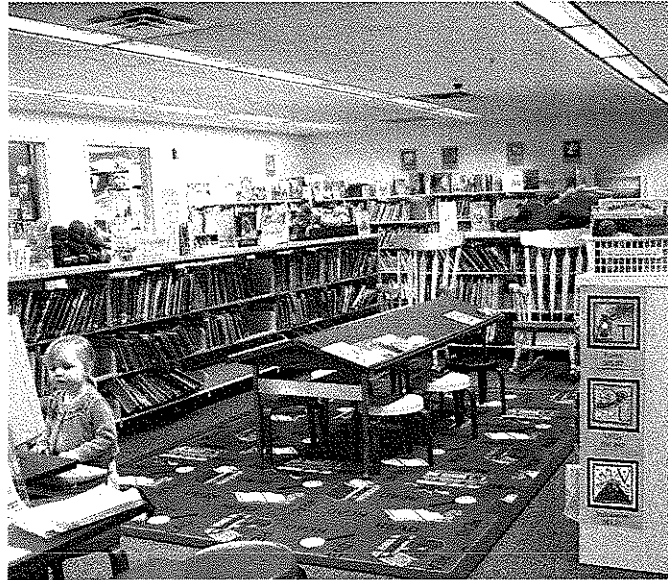
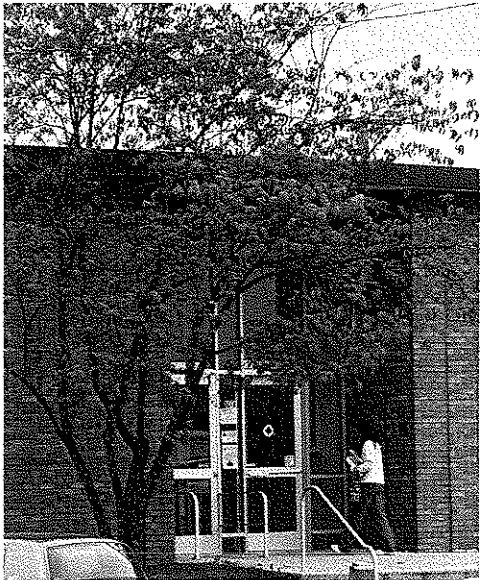
South Charleston Public Library
South Charleston, West Virginia

New main accessible entry, complete interior renovation and reconstruction along with and including new ADA staff and public toilets, stack areas, circulation desk and reading areas, with three small additions to an existing library facility.

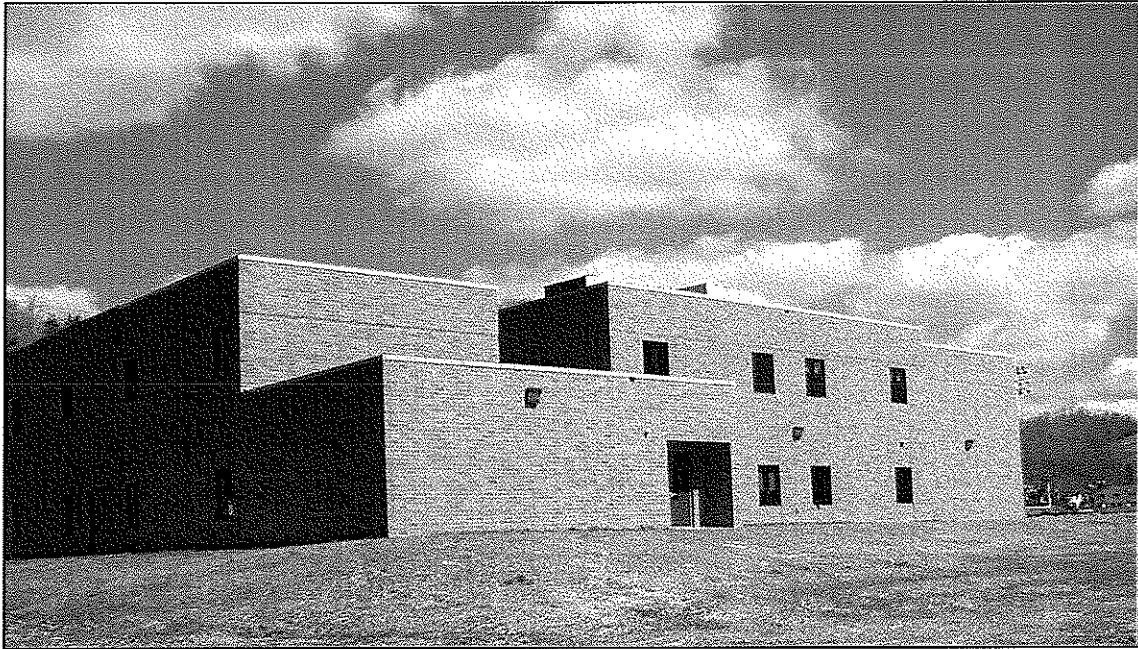
Library remained open during all phases of construction.

Renovations	15,455 sf
Addition	2,396 sf
Construction Cost	\$ 1,200,000
Completion	2003

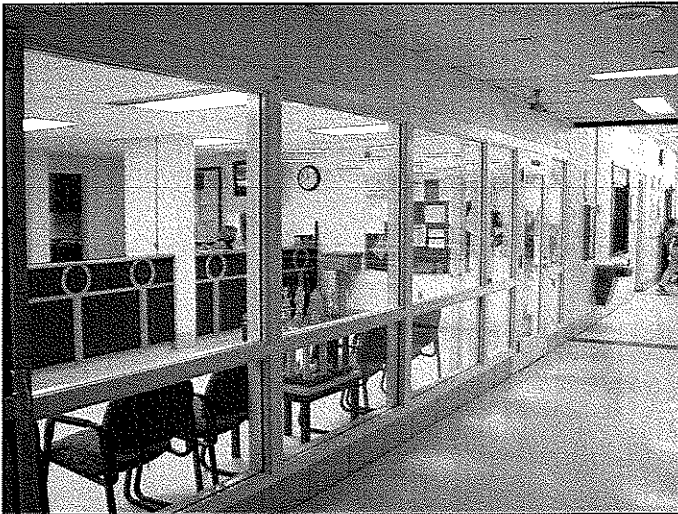
SOUTH CHARLESTON PUBLIC LIBRARY



ELKVIEW MIDDLE SCHOOL



Classroom Wing Addition

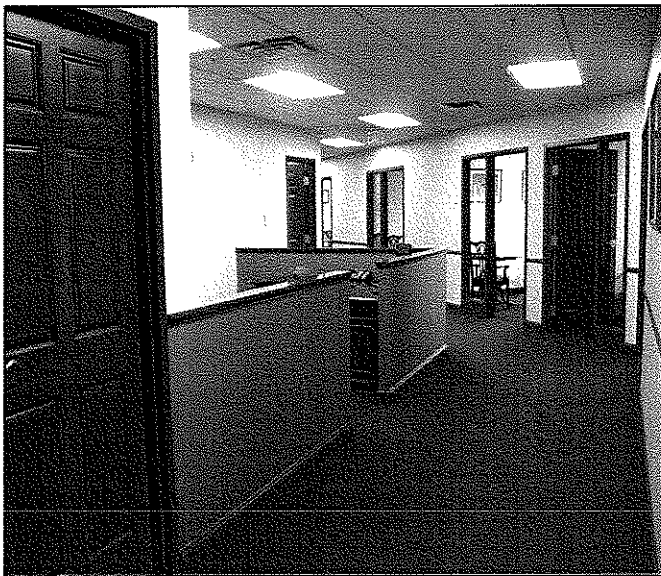


Office/Reception at New Commons

Elkview Middle School
5090 Elk River Road North
Elkview, West Virginia

Additions and renovations including, but not limited to, a new two-story classroom wing with eight classrooms and two gang toilets, additional Commons area with renovations to existing office area, lower and upper level classrooms, and existing toilets.

Size: Addition	8,443 sf
Renovations	81,548 sf
Cost:	\$ 1,500,000
Completion:	2003



A G Edwards & Sons, Inc.
500 Lee Street East
Charleston, West Virginia 25301

Partial Fourth Floor renovation of
Laidley Tower, Charleston,
West Virginia to provide office space

Size:	6,639 sf
Construction Cost:	\$ 450,000
Completion:	2007

UPPER KANAWHA VALLEY TECHNOLOGY BUILDING



Upper Kanawha Valley
Technology Community Building
Montgomery, West Virginia

Basement build out for the
National Publishing Innovation
Center, ink research labs.

Cost: \$275,000
Completion: 2008

STATE OF WEST VIRGINIA
Purchasing Division

PURCHASING AFFIDAVIT

West Virginia Code §5A-3-10a states: No contract or renewal of any contract may be awarded by the state or any of its political subdivisions to any vendor or prospective vendor when the vendor or prospective vendor or a related party to the vendor or prospective vendor is a debtor and the debt owed is an amount greater than one thousand dollars in the aggregate.

DEFINITIONS:

"Debt" means any assessment, premium, penalty, fine, tax or other amount of money owed to the state or any of its political subdivisions because of a judgment, fine, permit violation, license assessment, defaulted workers' compensation premium, penalty or other assessment presently delinquent or due and required to be paid to the state or any of its political subdivisions, including any interest or additional penalties accrued thereon.

"Debtor" means any individual, corporation, partnership, association, limited liability company or any other form or business association owing a debt to the state or any of its political subdivisions. "Political subdivision" means any county commission; municipality; county board of education; any instrumentality established by a county or municipality; any separate corporation or instrumentality established by one or more counties or municipalities, as permitted by law; or any public body charged by law with the performance of a government function or whose jurisdiction is coextensive with one or more counties or municipalities. "Related party" means a party, whether an individual, corporation, partnership, association, limited liability company or any other form or business association or other entity whatsoever, related to any vendor by blood, marriage, ownership or contract through which the party has a relationship of ownership or other interest with the vendor so that the party will actually or by effect receive or control a portion of the benefit, profit or other consideration from performance of a vendor contract with the party receiving an amount that meets or exceeds five percent of the total contract amount.

EXCEPTION: The prohibition of this section does not apply where a vendor has contested any tax administered pursuant to chapter eleven of this code, workers' compensation premium, permit fee or environmental fee or assessment and the matter has not become final or where the vendor has entered into a payment plan or agreement and the vendor is not in default of any of the provisions of such plan or agreement.

Under penalty of law for false swearing (*West Virginia Code §61-5-3*), it is hereby certified that the vendor affirms and acknowledges the information in this affidavit and is in compliance with the requirements as stated.

WITNESS THE FOLLOWING SIGNATURE

Vendor's Name: CMA Engineering

Authorized Signature: *Daniel L. Elton* Date: 3/01/2011

State of WV

County of Kanawha, to-wit:

Taken, subscribed, and sworn to before me this 1 day of MARCH, 2011.

My Commission expires SEPTEMBER 16, 2020.

AFFIX SEAL HERE

NOTARY PUBLIC *Cindy L. Rooney*

