

Purchasing Division
Buyer- John Abbott
2019 Washington Street, East
P.O. Box 50130
Charleston, WV 25305-0130

Dear Mr. Abbott and Members of the Selection Committee:

The team of PSA-Dewberry/ Alpha Associates & H.F. Lenz enthusiastically submits our team's Architectural and Engineering qualifications to the West Virginia Regional Jail and Correctional Facility Authority and the State of West Virginia Purchasing Division. We have detailed in this proposal . . . our EXPERIENCE with repair, renovation and/or replacement projects at various facilities across the nation. . . our core TEAM MEMBERS assigned to the project that have successfully worked together for over 20 years including our in-house technology and security team and . . . and our specific APPROACH to these potential projects understanding these facilities will remain operational during construction.

EXPERIENCE: PSA-Dewberry

- Top 10 ranked Corrections Group (ENR, 2009) - provides current best practices and lessons learned over the past 38 years to the West Virginia Regional Jail and Correctional Facility Authority and State of West Virginia.
- Dedicated in-house technology and security group for over 38 years focusing specifically in corrections. It's fully integrated into all projects.
- Recognition by the American Institute of Architects (AIA), American Jail Association (AJA), and the American Correctional Association (ACA) annually for the last 30 years.
- Understanding of ACA standards and accreditation- Ron Budzinski is the only architect that currently sits on and was elected to the ACA Standards and Accreditation Committee. (2006-2010)
- Correctional team that has been working together for over 30 years.

TEAM MEMBERS: Alpha Associates and H.F. Lenz

- Alpha Associates is a local and proven West Virginia firm with past and current experience along with a proven track record of working with the State of West Virginia.
- Currently working with the State of West Virginia on 4 contracts.
- Previous correctional experience and current role with the new Federal Bureau of Prisons Facility to be built in Hazelton, WV.
- H.F. Lenz brings specific correctional experience and reliability to the team with their building systems, infrastructure and industry engineering.

APPROACH

- Confirming expectations through an interactive user workshop process with designated West Virginia Regional Jail and Correctional Facility Authority and State of West Virginia staff that is transparent and productive in promoting good participation and communication.
- All the services are kept within PSA-Dewberry, Alpha Associates and H.F. Lenz providing the West Virginia Regional Jail and Correctional Facility Authority and the State of West Virginia with one point of contact. Including LEED, MEP Engineering, Structural Engineering, Fire and Life Safety, Construction Administration, Commissioning, QA/QC and Site/Civil

On behalf of PSA-Dewberry and our team members: Alpha Associates and H.F. Lenz we thank you for consideration of this proposal.

Sincerely,
PSA-Dewberry Inc.



Ron Budzinski, FAIA
National Director, Criminal Justice Architecture



Matthew Skarr
National Director Business Development, Criminal Justice Architecture

RECEIVED

2009 OCT 13 A 7:59

PURCHASING DIVISION
STATE OF WV

tab 2: statement of firms' experience (section a)



Alpha is a multi-disciplined Architectural and Engineering (A/E) Firm with offices in Morgantown and Martinsburg, West Virginia. Spanning several decades, Alpha has grown to be one of the largest A/E firms in West Virginia.

History

Quality service has been the cornerstone of Alpha Associates, Incorporated from the beginning. Founded in 1969, Alpha Associates has grown from a small structural engineering and architectural firm into one of the largest multi service design firms in West Virginia. The continuous growth at Alpha Associates has benefited clients in Morgantown and throughout West Virginia. West Virginia University and the Robert C. Byrd Health Sciences Center were very early clients, and have remained clients for nearly 38 years. Alpha's expansion in 1995 increased the client base and provided more efficient service for the clients in the Eastern Panhandle. Alpha Associates, Incorporated employs a staff of 43 Architects, Engineers, Surveyors and support staff. The dedication of the staff is what makes Alpha Associates, Incorporated a powerhouse in West Virginia.

Background

Alpha's Corporate Office is located in the South Park area of Morgantown, West Virginia. Since opening in 1969, Alpha Associates, Incorporated has left it's mark in Morgantown. Alpha's influence can be felt at, West Virginia University Robert C. Byrd Health Sciences Center, Glenmark Centre and in downtown Morgantown. The above listed clients, as well as numerous others, have made Alpha an A/E powerhouse in West Virginia. The Corporate Office provides Architectural Design, Engineering and Surveying Services. Alpha's support staff in Morgantown is comprised of experts in their fields and do an excellent job supporting the professional staff.



H.F. LENZ COMPANY

Currently in its 63rd year, the H.F. Lenz Company is a Pennsylvania based firm offering a full range of engineering services for building systems, infrastructure, and industry. Our projects span the nation, with the heaviest concentration in the Northeast, and exceed \$530 million in MEP, Civil and Structural construction annually. A remarkable 85 percent of our work consists of repeat commissions from clients who appreciate our responsive, value-added service. Our 44 Professional Engineers are licensed in a total of 45 states and DC. We currently have 10 Engineers licensed in West Virginia. Our in-house services include:

- Mechanical Engineering
- Electrical Engineering
- Plumbing Engineering
- Life Safety / Fire Protection Engineering
- Communications Engineering
- Energy Management
- Civil Engineering
- Structural Engineering
- Industrial Engineering
- Surveying
- Construction Phase Services
- Commissioning
- LEED™ Design Services

Forefront of Correctional Design

H.F. Lenz Company is nationally recognized engineering firm with extensive experience in criminal justice facilities. We understand the issues involved in designing building systems for this type of facility and we are thoroughly familiar with recent correctional trends. We will work closely with the client and the design team to develop the solutions that best meet our client's unique needs. Mechanical and electrical systems design in facilities dealing with incarceration differs from the design of conventional buildings in many ways. These systems must address items such as the confined occupant, the correctional facility staff interface, security, and life safety. Items of major concern include:

- Secure equipment to prevent damage, hidden contraband, suicide, or weapon manufacture
- Centralized control of lighting
- Ventilation air
- Specialized fire hose systems for riot control
- Non-secure access paths to mechanical equipment for maintenance considerations
- Centralized or non-secure locations for valves, mechanical, and electrical equipment
- Electronic plumbing systems for close control of individual cells, dayroom water management, and entire facility
- Humidity control to maintain ventilation in non-secure air conditioned areas
- Acoustic analysis to prevent excessive equipment noise

Our project team for this project is the same team that successfully worked together on the new 700,000 SF Forest County State Correctional Institute (SCI) (L5 facility) in Pennsylvania, completed in 2002. This team also recently completed engineering services for the bridging documents for new 128-bed additions to the Pine Grove, Coal Township, and Cambridge Springs State Correctional Institutions (L3 facilities), and the 96-bed addition to the Forest County SCI. Our recent SCI experience also includes replacement of the steam lines and the repair of the main steam tunnel at SCI Camp Hill and the replacement of heating and cooling lines at SCI Fayette.

tab 3: understanding (sections b-d)

Design

- Schematic/Concept Planning
- Design Development/Construction Documents
- Quality Assurance/Peer Review
- Bidding and Negotiation
- Construction Administration

Plumbing Engineering

PSA-Dewberry's plumbing engineers understand the complex demands of facilities' operational systems and they work to provide efficient and high-performance system design. They carefully consider the ease of maintenance and security in the design of the systems as well as ensuring they blend in with the architecture of the building.

Our Plumbing Engineering services include:

- Planning
- Design
- Estimating
- Equipment Audits
- Construction Documents
- Quality Assurance/Peer Review
- Bidding and Negotiation
- Construction Administration

Technology

Having implemented multiple successful jail projects, the PSA-Dewberry Technology Studio has the expertise to assist Clients in the application of today's most advanced technologies.

Some of these benefits of technology in jail environments include:

- Faster inmate processing/movement throughout the facility
- Improved employee training facilities
- A safer working environment for the facilities staff

D. Understanding of the Operational, Security, and Functional Requirements of Institutional Facilities

Our over 50 years of experience in the design and construction of correctional facilities has given us a broad and deep understanding of the operational needs, security requirements and functional needs of correctional facilities. Often operating on minimum funding, the wrong location of the control room in relationship to the housing pods can increase staffing or compromise security and have a lifetime impact on the facility operations or costs. PSA-Dewberry has designed and built correctional facilities all over the Country and bring that experience to play on each project we do. We understand the processing of the inmate from booking through their day to day lives in these institutions.

We understand that the smallest of details in construction can leave the officers and the inmates vulnerable. Life safety of everyone who uses this facility is of utmost importance to us. Members of our corrections team have sat on accreditation committees, helped to write ACA standards and participate very actively in the American Institute of Architects Justice Committee. We have also sat on National Code Committees and testified on behalf of revisions to code to better assure life safety for correctional facilities and helped to revise the ADA to accommodate the needs of a correctional facility.

State of the Art Design

The PSA-Dewberry team works closely with our corrections clients to ensure that their projects are properly managed and that they result in functional, "constructible", attractive, and code-compliant spaces. The result is state-of-the-art design and innovation. We strive to:

- Understand the unique problems and issues rising out of the operational requirements of mission, staffing and maintenance.
- Reflect those operational requirements in the building design, materials, and configuration within site and budget constraints.
- Coordinate security, technology and building systems to complement the operational planning and design requirements.

Over thirty years of experience designing medium security prisons has provided PSA-Dewberry with perspective in how best to satisfy the evolving needs of our clients. Each project presents unique opportunities to use "outside the box" creativity and innovation in order to optimize the building design within budget constraints.

Integrated Security Systems

As government bodies on all levels are faced with tighter operating budgets, jail managements are forced to do more with less. As staff sizes become smaller, safety concerns rise and fewer are expected to do more. Integrated electronic systems have proven to be an effective way to maintain an environment that addresses typical operation requirements. At PSA-Dewberry we don't specify the "next the best thing" just because it is new and exciting. We only specify items that are tried and true and are cost effective. Many systems considered "latest and greatest" comes with a higher price that may be difficult for clients to come to terms with, being high capital dollar items to install and then high recurring costs to maintain. PSA-Dewberry had design hundreds of security systems of all types, for projects of all sizes, to fit the needs of the client and their budget.

tab 4: approach and timeline (section e)

E. Firm's plan of Approach and a Timeline for this Project.

Plan of Approach: Roof and HVAC replacement at the Northern Regional Jail

1. Conduct a site meeting with the user and design team to verify the exact scope of work, verify the condition of the existing roof assembly including drainage, verify the existing HVAC equipment that will be replaced including all mechanical and electrical connections, verify what security measures the contractors must adhere to while work on the project, begin to discuss how the project will be phased including any additional security measures and discuss any additional user concerns.
2. Prepare a 50% design submittal for user review which would include a roof demolition plan, new roof plan, mechanical demolition plan, new mechanical equipment plan, phasing plan, site security plan, estimate and project specifications.
3. Incorporate user comments into the design submission.
4. Prepare a 100% design submittal for user review which would include a roof demolition plan, new roof plan, mechanical demolition plan, new mechanical equipment plan, phasing plan, site security plan, estimate and project specifications.
5. Incorporate user comments into the design submission.
6. Bid project.
7. Perform construction administration services.

Timeline: Roof and HVAC replacement at the Northern Regional Jail

1. Site meeting(s), design documents, project specifications will take between 2 to 3 months.

2. Bidding will take between 1 to 2 months.

3. Construction administration services will take between 4 to 6 months.

Plan of approach: Installation of Resinous Flooring in Kitchens at the Central Regional Jail, Southern Regional Jail and Southwestern Regional Jail

1. Conduct a site meeting with the user and design team to verify the exact scope of work, verify the condition of the existing flooring system including all floor drains, verify where the existing kitchen equipment will be stored during the construction process, verify the condition of the existing wall and ceiling surfaces, verify what security measures the contractors must adhere to while working on the project, discuss how the project will be phased including any additional security measures and discuss any additional user concerns.
2. Prepare a 100% design submittal for user review which would include a floor demolition plan, new kitchen resinous floor plan, phasing plan, site security plan, estimate and project specifications.
3. Incorporate user comments into the design submission.
4. Bid project.
5. Perform construction administration services.

Timeline: Installation of Resinous Flooring in Kitchens at the Central Regional Jail, Southern Regional Jail and Southwestern Regional Jail

1. Site meeting(s), design documents, project specifications will take between 4 to 6 weeks
2. Bidding will take between 1 to 2 months.
3. Construction administration services will take between 1 to 2 months.

Plan of approach: Rehabilitation of 25 Existing Shower Units at the Central Regional Jail, Southern Regional Jail, South Central Regional Jail and Northern Regional Jail

1. Conduct a site meeting(s) with the user and design team to verify the exact scope of work, verify the condition of the existing shower units including all floor, wall and ceiling surfaces, plumbing fixtures, HVAC diffusers and light fixtures, verify the condition of the privacy door assembly, verify the condition of the ADA shower seat and grab bars, verify the condition of the drying areas, verify what security measures the contractors must adhere to while working on the project, discuss how the project will be phased including any additional security measures and discuss any additional user concerns.
2. Prepare a 100% design submittal for user review which would include a shower demolition plan, new shower floor plan, phasing plan, site security plan, estimate and project specifications.
3. Incorporate user comments into the design submission.
4. Bid project.
5. Perform construction administration services.

Timeline: Rehabilitation of 25 Existing Shower Units at the Central Regional Jail, Southern Regional Jail, South Central Regional Jail and Northern Regional Jail

1. Site meeting(s), design documents, project specifications will take between 4 to 6 weeks
2. Bidding will take between 1 to 2 months.
3. Construction administration services will take between 1 to 2 months.

tab 5: project experience and references (sections f-h)

Richland County Jail, Mansfield, Ohio

Study and design for a new county jail facility adjacent to the existing courthouse and jail. The three-story facility houses 178 inmates with a build-out capacity of 230 inmates. The new facility, in addition to the inmate housing areas, provides a kitchen, intake/booking, medical, jail administration offices, public video visitation, staff locker rooms and general storage areas. The new facility is connected to the existing facility via a bridge connector with minor renovations required to the existing facility at the connection point, 64,000 SF, \$14 million, 2007

PSA-Dewberry Responsibility: Architectural, HVAC, Detention and Security Electronics Services, Construction Administration

Security Level: Minimum/Medium/, Maximum and Admin Segregation

Associate Firm: MKC Associates, Inc.

Middle Peninsula Regional Jail Study & Implementation, Saluda, Virginia

This needs assessment, planning study and subsequent design implementation resulted in a 120-bed facility serving five counties (Essex, Middlesex, Mathews, King and Queen, and King William). The facility uses a combination of direct and indirect supervision in a cost and staff efficient, low maintenance structure with concrete block bearing wall design and protected steel roof construction, 48,000 SF, \$7.5 million, 1999

PSA-Dewberry Responsibility: Needs Assessment, Programming, Design, and Security Documents, Partial Construction Administration

Security Level: Minimum/Medium/, Maximum and Admin Segregation

Architect-of-Record: MMM Design Group

Pamunkey Regional Jail, Hanover, Virginia

Design of a 318-bed, full service jail serving the counties of Hanover, Caroline and the Town of Ashland. The facility houses sheriff's administration, medical, intake/classification, and work release facility, 126,756 SF, \$19.9 million, 1998

PSA-Dewberry Responsibility: Design, Production, Security Documents, Detention, Construction Administration

Security Level: Minimum/Medium/, Maximum and Admin Segregation

Architect-of-Record: MMM Design Group

Wilkes County Justice Center, Wilkes County, North Carolina

Needs assessment and design of a new jail and law enforcement center to be located near and connected to the existing court facility. The new facility will centralize sheriff's offices, currently located in seven

different buildings, and will include space for a 911 communication center as well as support spaces. 120,000 SF, \$22.5 million (est.), 2010

PSAD Role: Planning, Corrections Architecture, Security/Technology Design, Detention, Construction Administration

Security Level: Minimum/Medium/Maximum, and Admin Segregation

Prime Firm: Cope Associates, Inc.

Lancaster Detention Facility, Lincoln, Nebraska

The Lancaster Detention Facility is a two-story, direct supervision, 664-bed facility, designed with support space to expand to 1,000 beds. Additionally, the site has been master planned to expand both bed capacity and support spaces to an ultimate build-out of 1,896 beds, 258,000 SF, \$65 million (est.), 2011

PSAD Role: Planning, Corrections Architecture, Detention and Construction Administration

Security Level: Minimum/Medium/, Maximum, Mental Health and Admin Segregation

Architect-of-Record: Clark Enersen Partners

Buchanan County Jail, Independence, Iowa

Master Plan study and design implementation for a 50-bed jail/city/county law enforcement, \$4 million, 18,321 SF, 2009

PSA-D Role: 50% Architecture, Security, MEP & Structural Engineering, Detention and Construction Administration

Security Level: Minimum/Medium/, Maximum and Admin Segregation

Associate Firm: InVision Architecture

Jefferson County Justice Center, Jefferson City, Tennessee

This new facility includes a min/med/max jail with sheriff's department and courts facilities, 52,025 SF, \$13 million, 2006

PSAD Role: Planning, Corrections Architecture, Security/Technology Design

Security Level: Minimum/Medium/Maximum

Prime Firm: Barge Waggoner Sumner Cannon

Rock Island County Jail and Courts, Rock Island, Illinois

Design of a jail addition housing 120 minimum security beds, three full service felony courtrooms and support spaces. The addition increases the jail's capacity to 325 beds and provides required support and program spaces, 54,865 SF, \$10.4 million, 2000

PSA-Dewberry Responsibility: Prime Architect providing Project Management, Architecture, Engineering, Security/Electronics Design, Detention Hardware Specification, and Construction Administration

Security Level: Minimum/Medium/, Maximum and Admin Segregation

Sullivan County Jail, Blountville, Tennessee

Design of a major jail expansion on a phased construction basis, with 144 new beds and a new intake center, medical, and visiting areas, 80,000 SF, \$12 million, 2000

PSA-Dewberry Responsibility: Design, Security/Electronics, Detention Hardware, Partial Construction Administration

Security Level: Minimum/Medium/, Maximum and Admin Segregation

Architect-of-Record: Barge Waggoner Sumner & Cannon

Danville Public Safety Building Expansion, Danville, Illinois

176-Bed expansion and remodeling of the jail and law enforcement areas for the Danville Police Department and the Vermilion County Sheriff's Department, 41,000 SF, \$8.2 million, 2003

PSA-Dewberry Responsibility: Prime Architect providing Design, Security/Electronics, Detention Hardware, Partial Construction Administration

Security Level: Minimum/Medium/, Maximum and Admin Segregation

Blount County Justice Center, Maryville, Tennessee

A new 250-bed jail and a new county courthouse, 154,000 SF, \$19 million, 1999

PSA-Dewberry Responsibility: Design, Interior Fit-Out, Security/Electronics, Detention Hardware, Partial Construction Administration

Security Level: Minimum/Medium/, Maximum and Admin Segregation

Architect-of-Record: Barge Waggoner Sumner & Cannon

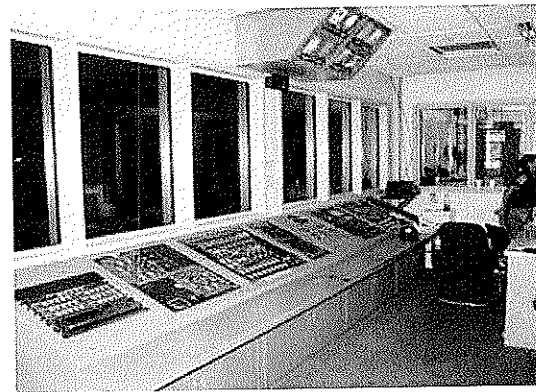
Jefferson County Jail, Louisville, Kentucky

Conversion of the existing Metropolitan Sanitary District Building to a county jail facility. This facility has a new intake center, as well as 1,020 new beds, inmate program space, and new county correctional administrative offices. The renovated building is connected by bridge to the Hall of Justice which provides secure movement for food service and inmates from and to the Hall of Justice, 160,000 SF, \$18.5 million, 1999

PSA-Dewberry Responsibility: Design, Security/Electronics, Detention Hardware, Partial Construction Administration

Security Level: Minimum/Medium/, Maximum and Admin Segregation

Architect-of-Record: Louis & Henry Group

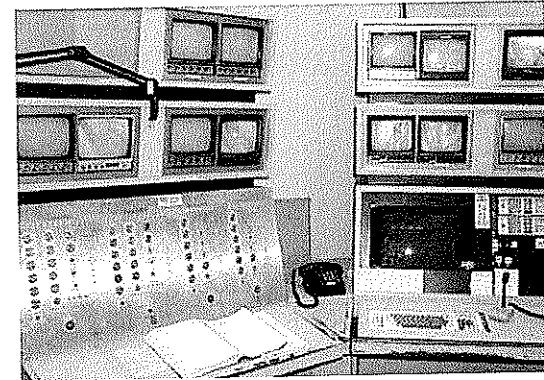
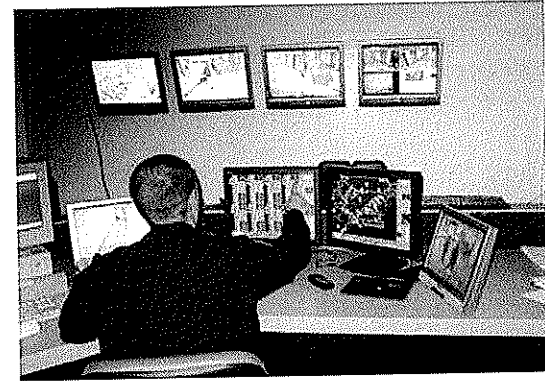


Control Room before renovation

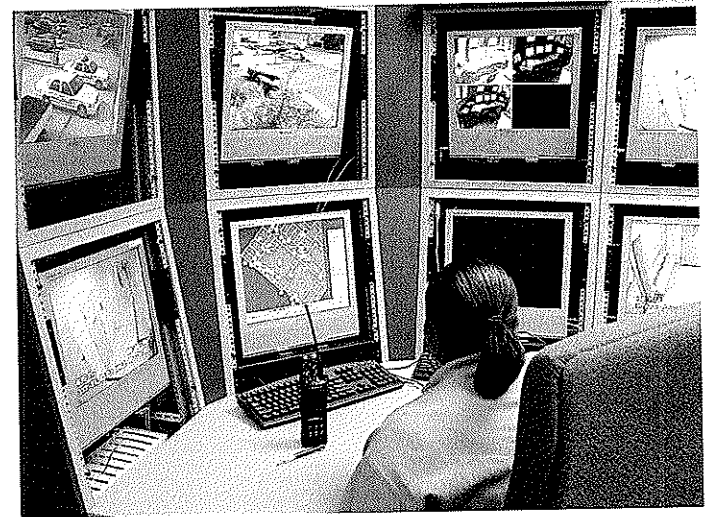


Rendering of new control room layout

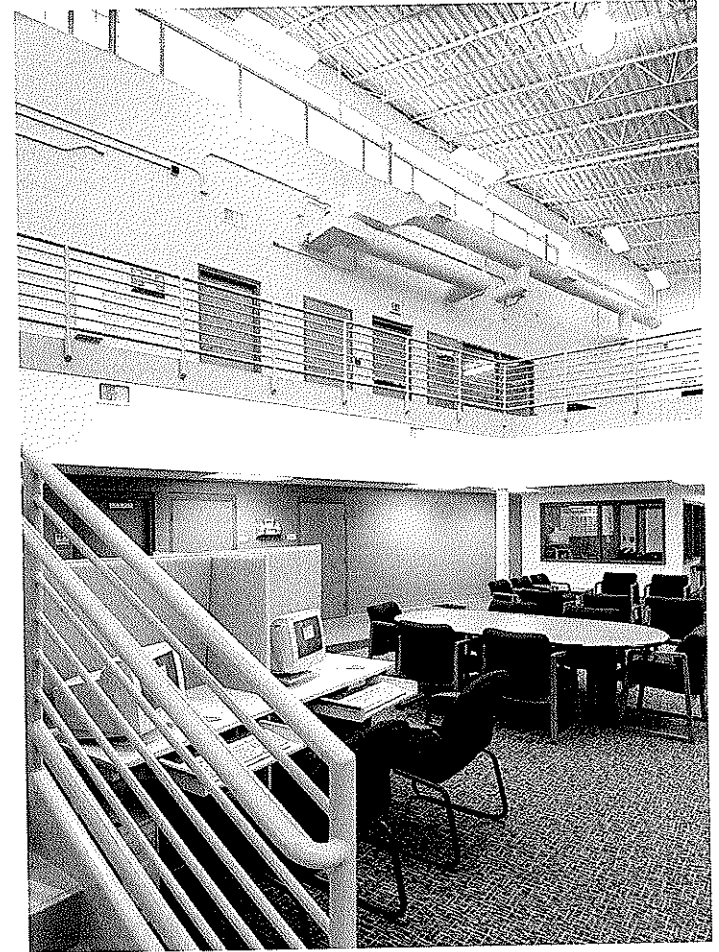
Western Tidewater Regional Jail - Security and Life Safety Renovation
Suffolk, Virginia



Hamilton County Justice Center - Security Controls Renovation
Cincinnati, Ohio



Lafayette Parish Correctional Center - Security Controls Renvoation
Lafayette, Louisiana



Frederick County Work Release/Substance Abuse Center
Frederick, Maryland



Rappahannock Regional Jail
Stafford, Virginia

Lancaster Detention Facility

Lincoln, Nebraska

CURRENTLY IN CONSTRUCTION

Type of Work
Male and Female Detention Facility

Scope
Architecture
MEP Corrections Engineering
Technology
Cost Estimating

Size
258,000 SF

Cost
\$65 million (estimated)

Completion Date
2011

*PSA-Dewberry and Chinn Planning
completed program*

LEED TARGETED

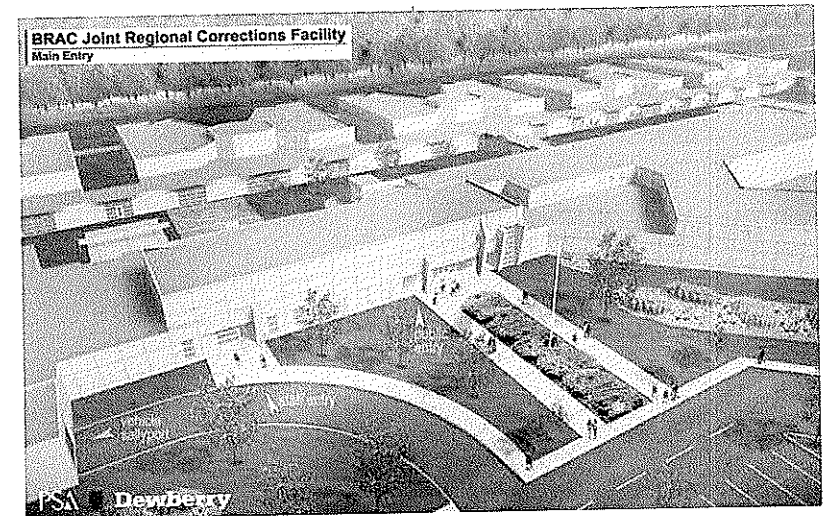
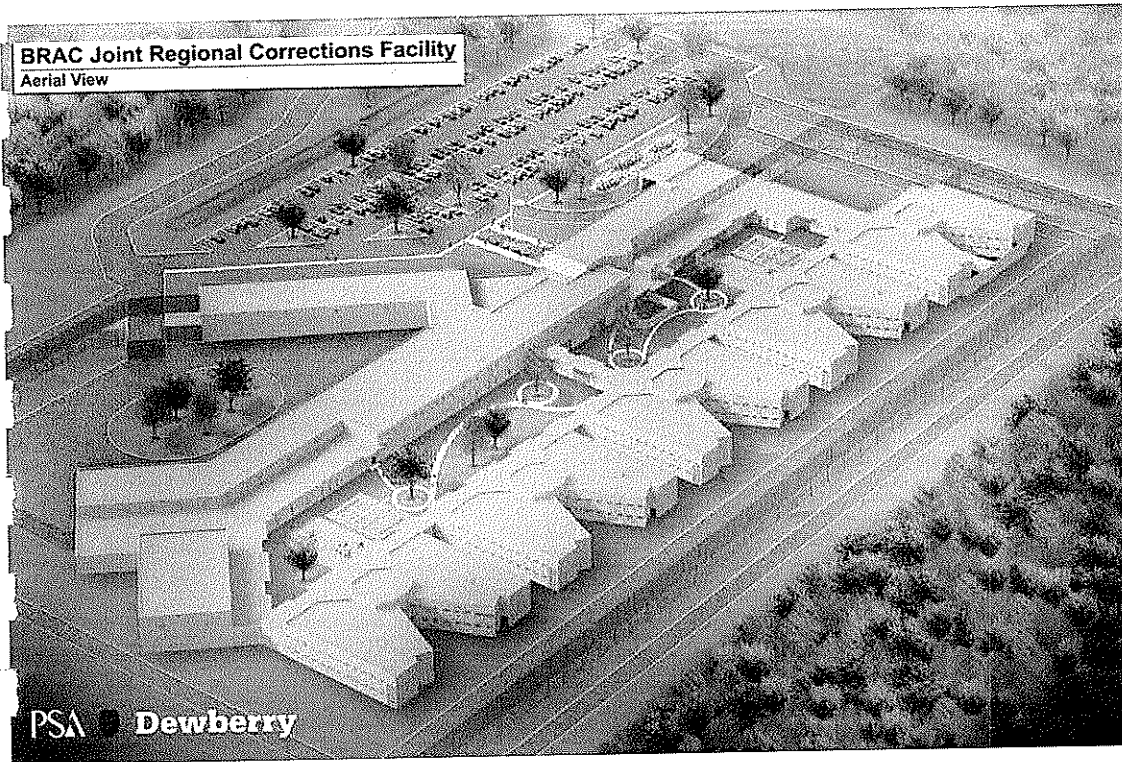


The Lancaster Detention Facility (LDF) is a two-story, direct supervision, 664-bed facility, that includes a women's component of 193 beds. Of the 193 women beds, 48 are work release, 24 are mental health, 105 are general population and 16 are special management. It is designed with support space to expand to 1,000 beds. Additionally, the site has been master planned to expand both bed capacity and support spaces to an ultimate build-out of 1,896 beds.

PSA-Dewberry's design process incorporated a "Community Design Studio", which provided space for interactive workshops, full-scale mock-ups and testing of various manufacturer's products. Participation was structured and open to all stakeholders interested in the mission of LDF.

This collaborative approach:

- Developed a detention facility that will meet long term incarceration needs,
- Offered programmatic opportunities to change inmate behavior; and
- Improved public safety in Lancaster County.



NAVFAC Mid-Atlantic BRAC Joint Regional Correctional Facility
Chesapeake, Virginia

Calaveras County Adult Detention Facility and Sheriff's Administration Building

Calaveras County, California

CURRENTLY IN DESIGN - BID SPRING 2010

Scope
A/E Design through
Construction Administration

Size
127,000 SF

Cost
\$37.5 million (estimated)

Completion Date
2011 (estimated)

A new adult detention facility that will contain 160 inmates in double bunked cells and 80 inmates in dormitory style housing totaling 240-beds. The facility will include support and programming spaces, a Sheriff's Administration Building, 911 Dispatch Center and Emergency Operations Center.

Services include architectural program validation, schedule and budget validation, pre-design engineering services, A/E design through construction administration.

Baltimore Youth Detention Center

Baltimore, Maryland

CURRENTLY IN DESIGN - BID SPRING 2010

Type of Work
Youth Detention Facility

Scope
Programming
Master Planning
Conceptual Design

Size
215,000 SF
180 beds

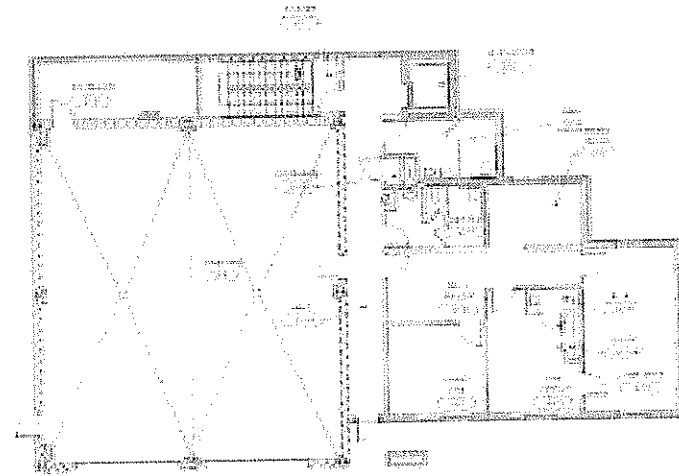
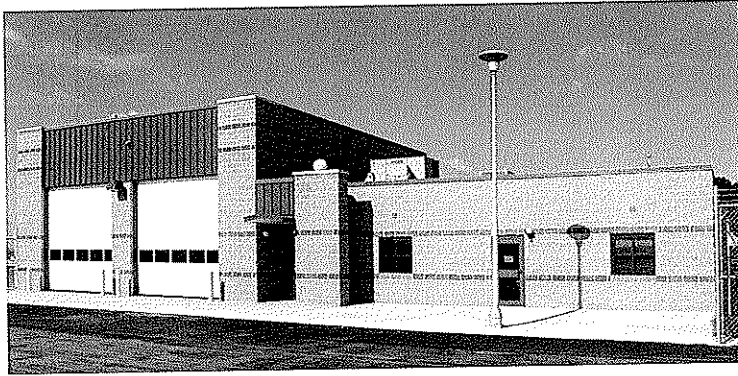
Cost
\$65 million (estimated)

Completion Date
2011

Located within the urban context of Baltimore City, this 215,000 SF youth detention facility is programmed/ designed to provide full services, programs, and housing for male and female youth being charged as adults. The new youth detention center is the first of seven major construction phases providing new facilities integrating four separate populations (youth, adult female, adult male, transitional inmates). The youth detention center ultimately will be a combined structure with a new 800-bed women's detention center (Phase II). The site for the new youth detention center provides many challenges including environmental assessments, existing deep foundation systems considerations, utility infrastructure analysis, and the contention of a sloped site relative to the building's organization of entry points.

With an eye to the future, the organization of the six-level youth detention center facility anticipates the importance of sight and sound separation between youth and adult populations within a secure perimeter while achieving operational and overall space efficiencies through the consolidation of program functions and shared support areas for both facilities.

The youth detention center's contents include the following: reception and court transfer; housing arrangements for 180 male and female youth expandable to a population of 230 with various program and service spaces within the units; a centralized school with recreation, dining, and counseling space organized according to the youths' daily activity schedule; facility services including medical and mental health (44 total beds), visiting, food preparation, commissary and laundry; facility support functions including staff areas for administration, dining, locker rooms, security operations, warehouse, maintenance, and staff parking. The building's overall organization has three levels of youth housing and program space situated atop three levels of facility service and support spaces at the base.



Morgantown Municipal Airport Air Rescue and Fire Fighting Building
Morgantown, West Virginia



Morgantown Municipal Airport - Open End Term Contract

Morgantown, West Virginia

Type of Work
Architectural Design
Civil Engineering
Structural Engineering
Interior Design
Construction Administration

Size
Multi Project

Cost
Multi Project

Completion Date
Multi Project

Alpha Associates, Incorporated has been providing Architectural Design, Civil and Structural Engineering, Interior Design and Construction Administration Services for the Morgantown Municipal Airport for more than 10 years. Recently constructed projects include:

- Air Rescue Fire Fighting Building—Alpha Associates, Incorporated completed design of the latest building at the Morgantown Municipal Airport. The building serves as an Air Rescue and Fire Fighting Building housing two fire trucks and equipment with additional space for offices and a training center.
- Runway Safety Area—The feasibility study for the Safety Area Design looked at several options for runway safety enhancements for Hart Field. Upon discussion with the Airport, the FAA coupled with Alpha's recommendation, it was determined that the conventional embankment would be designed for the southern approach of Runway 36. This project is currently in the bidding phase.



U.S. Army Reserve Center

Beckley, West Virginia

Type of Work
Architectural and Engineering Design
Services

Size
28,000 SF Addition
2,700 SF Addition

Cost
\$5.4 million

Completion Date
1994

Project Relevance
Architectural Design
Maintenance Facility
Site Planning
Roadway Design
Federally Funded

Alpha Associates, Incorporated provided architectural and engineering design for a Training Building and Organizational Maintenance Shop at the U.S. Army Reserve Center in Beckley, West Virginia. The Training Building is 28,000 SF and includes offices, a multi-purpose room for general assemblies, drill formations and dining, library, food preparation area, rifle range, and arms vault and storage area. The 2,700 SF OMS houses a work and wash bays, storage areas, support offices, hazardous materials storage area and mechanical and battery rooms. Services for this U.S. Army Corps of Engineers contract also included site planning, utilities, road, and parking lot design for this 10-acre Reserve Center at the Raleigh Memorial Airport Industrial Park.



Camp Dawson Training Facility

Kingwood, West Virginia

Type of Work
Architectural and Engineering Design
Services

Size
34,558 SF Phase II
17,300 SF Phase III

Cost
Multiple Contracts

Completion Date
Multiple Dates

Project Relevance
Architectural Design
Construction Administration
Site Planning
Federally Funded

Alpha Associates, Incorporated provided complete architectural and engineering design services, contract documents and construction administration for the Phase II and Phase III buildings and site design for this West Virginia Army National Guard facility located in Kingwood, West Virginia.

Phase II facilities included 2 Barracks for 420 people, totaling 34,558 square feet and consisting of sleep quarters and rest room facilities; 4,930 square foot dining facility including kitchen, storage areas and seating for 163 persons; and a 2,448 square foot supply/ration breakdown building including work room, secure storage, office, freezer and cooler rooms.

Phase III facilities include a two-story Barrack to accommodate 210 people, 17,300 square foot building consisting of sleep quarters and restroom facilities, a 4,930 square foot dining facility including kitchen, storage areas and seating for 163 persons; and a 3,597 square foot Medical Troop Clinic containing two doctors' offices, two exam rooms, a waiting room, dental exam area, soil utility and medical supply room.



West Virginia Medal of Honor Recipients Memorial Plaza

Hazleton, West Virginia

Size
7,700 SF

Cost
\$2 million

Completion Date
2002

The I-68 Welcome Center in Hazleton, WV was designed for the West Virginia Division of Highways. This project is located in Preston County and required a separate sewage treatment plant and major utility extensions due to the remote location of the site. The building is designed using native West Virginian materials as a central design theme. The design has steeply sloped, metal-clad roofs evocative of West Virginia's hills. Exposed heavy timber framing, native ledge rock stonework and rough-cut cedar siding are used both inside and outside of the building as a symbolic reminder of the beauty and ruggedness of the State's rustic environment.

The Welcome Center is a single-story building of approximately 7,700 square feet in area. It has separate spaces for public restrooms, vending, landscaped sitting "mall", arts and crafts display and offices. A state of the art, multiple-monitor, computerized theater having multi-media presentation capabilities is also included, as well as interactive computer kiosks bringing the latest updates on regional and state-wide information (such as accommodations, travel conditions, weather and festival events) to residents and visitors alike. This design utilizes large glass view areas within the Welcome Center to take advantage of the mountainous vista at this site.



National Energy Technology Laboratory – Open End Term Contract

Morgantown, West Virginia

Size
Multi Project

Cost
Multi Project

Completion Date
Multi Year

Alpha Associates, Incorporated provided services on and Open End Contract (IDIQ) with the US Department of Energy; National Energy Technology Laboratory. Projects completed through that contract include:

NETL Utility Relocation
NETL Roof Replacement
NETL Facade Replacement
NETL Parking Garage

The NETL Parking Garage included five parking levels and Alpha provided a multitude of services, including architectural design, civil and structural engineering, construction administration and landscape design. The construction cost of the parking structure was in excess of \$4 Million and was constructed by AAMC, Inc.



West Virginia University – Open End Term Contract

Morgantown, West Virginia

Size
Multi Project

Cost
Multi Project

Completion Date
Multi Year

Alpha Associates, Incorporated has an Open End Contract with West Virginia University. Projects completed through that contract include:

- Student Leader Housing—Architectural and Engineering Services for program review and conceptual design of downtown campus residential facilities. Services included site visits, drawings review, program documents review, evaluation report of proposed locations and building code impact, civil/site sketches for buildings, room layout sketches, building layout and elevation sketches, design schedule and probable construction cost statement and construction duration estimate.
- Armstrong Hall Roof Access—Design completed 2000
- White Hall Renovations—Service to convert four existing classrooms at White Hall on the campus of West Virginia University. The classrooms were turned into computer laboratories for the Geology Department and the Mining Engineering Department
- Brooks Hall Greenhouse Addition
- Hodges Hall Structural Roof Study
- White Hall Glass Block Replacement
- Engineering Building Facade Repair—Design Completed 2000
- West Virginia Law Center Parking Lot
- Engineering Sciences Galli Laboratory Renovations
- Agricultural Sciences Building
- Engineering Sciences Building 10th Floor Renovation
- Engineering Sciences Building East Wing Addition



Morgantown Municipal Airport Terminal Renovation

Morgantown, West Virginia

Size
10,000 SF

Cost
\$500,000

Completion Date
1993

Alpha Associates, Incorporated has completed architectural projects for the Morgantown Municipal Airport for more than a decade. Alpha's staff provided programming, space planning, interior design and fulltime construction administration services for a 10,000 square foot addition to the existing terminal originally constructed in 1993. Also included in this project was the design of a new terminal entrance and elevator tower.



Camp Dawson Training Facility

Kingwood, West Virginia

Type of Work
Architectural and Engineering Design
Services

Size
34,558 SF Phase II
17,300 SF Phase III

Cost
Multiple Contracts

Completion Date
Multiple Dates

Project Relevance
Architectural Design
Construction Administration
Site Planning
Federally Funded

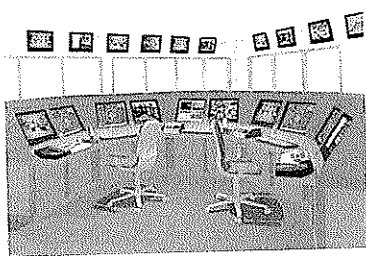
Alpha Associates, Incorporated provided complete architectural and engineering design services, contract documents and construction administration for the Phase II and Phase III buildings and site design for this West Virginia Army National Guard facility located in Kingwood, West Virginia.

Phase II facilities included 2 Barracks for 420 people, totaling 34,558 square feet and consisting of sleep quarters and rest room facilities; 4,930 square foot dining facility including kitchen, storage areas and seating for 163 persons; and a 2,448 square foot supply/ration breakdown building including work room, secure storage, office, freezer and cooler rooms.

Phase III facilities include a two-story Barrack to accommodate 210 people, 17,300 square foot building consisting of sleep quarters and restroom facilities, a 4,930 square foot dining facility including kitchen, storage areas and seating for 163 persons; and a 3,597 square foot Medical Troop Clinic containing two doctors' offices, two exam rooms, a waiting room, dental exam area, soil utility and medical supply room.



Technology/Security and MEP References



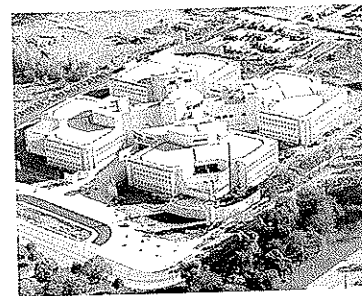
Western Tidewater Regional Jail -
Security and Life Safety Renovation
Mr. Thomas Townsend
Former Superintendent
Western Tidewater Regional Jail
(Currently Interim Police Chief for the City of Suffolk)
757.514.7900



Hamilton County Justice Center -
Security Controls Renovation
Mr. Joseph M. Schmitz
Director of Corrections
Hamilton County Sheriff's Office
1000 Sycamore Street, Room 120
Cincinnati, Ohio 45202
513.946.6606
schmitz@sheriff.hamilton-co.org



Lafayette Parish Correctional Center -
Security Controls Renovation
Mr. Robert Reardon
Director of Corrections
Lafayette Parish Sheriff's Office
316 West Main Street
Lafayette, Louisiana 70501
337.236.5488



Cook County Department of Corrections
(Division XI). Maximum Security Facility -
Security Controls Renovation
Ms. Elizabeth Melas
Deputy Director
Cook County Office of Capital Planning and Policy
69 West Washington, 30th Floor
Chicago, Illinois 60602
312.603.0303

tab 6: experience in the area of construction in
operational correctional institutions and
legal issues (sections i-l)

correctional facilities; additionally the infirmary consolidates counseling and treatment areas (i.e. substance abuse) from the individual RDC housing units, 42,000 SF, \$8.501 million

Rock Island County Jail and Courts, Rock Island, IL
Design of a jail addition housing 120 minimum security beds, three full service felony courtrooms and support spaces. The addition increases the jail's capacity to 325 beds and provides required support and program spaces, 54,865 SF, \$10.4 million

Sullivan County Jail, Blountville, TN
Design of a major jail expansion on a phased construction basis, with 144 new beds and a new intake center, medical, and visiting areas, 80,000 SF, \$12 million

Danville Public Safety Building Expansion, Danville, IL
176-Bed expansion and remodeling of the jail and law enforcement areas for the Danville Police Department and the Vermilion County Sheriff's Department, 41,000 SF, \$8.2 million

Jefferson County Jail, Louisville, KY
Conversion of the existing Metropolitan Sanitary District Building to a county jail facility. This facility has a new intake center, as well as 1,020 new beds, inmate program space, and new county correctional administrative offices. The renovated building is connected by bridge to the Hall of Justice which provides secure movement for food service and inmates from and to the Hall of Justice, 160,000 SF, \$18.5 million

Henry County Jail and Courts Expansion, Cambridge, IL
Site design expansion that provides 72 new cells, increasing the jail's capacity to 116 cells and new facilities for two courtrooms; two judges; circuit clerk; state's attorney; sheriff; court services and county boardroom; and a three-position 911 center, 61,000 SF (new), 20,500 (jail), 40,500 (courts), \$8 million

Metropolitan Government of Nashville and Davidson County Courthouse Renovations and Additions, Nashville, TN
Design of renovations and additions to a fully-occupied 65 year-old historic courthouse. Services include a current space analysis, future needs assessment, and a site improvement plan, 270,400 SF, \$28.7 million

Miami Correctional Facility, Peru, Indiana
This 3,100-bed correctional facility is located on the former Grissom Air Force Base property and is master planned to accommodate two phases of 1,200 and 1,600 medium security beds respectively, 200 minimum security beds, plus future expansion of 400 beds.

J. Litigation or Arbitration Proceedings Related to the Our Performance of a Contract

PSA-Dewberry is currently (and has been over the past five years) involved in a limited number of legal claims. Dewberry is confident in its ability to successfully defend, or settle on favorable terms, all such outstanding claims. Furthermore, for the protection of Dewberry and its clients, Dewberry always maintains a comprehensive insurance program which includes professional liability, workers' compensation, comprehensive general liability, automobile and umbrella policies, with limits sufficient to cover the defense and payment of all outstanding claims against Dewberry. In the opinion of Dewberry's management, no claim or lawsuit currently pending against Dewberry will materially affect Dewberry's ability to perform this project.

K. Statement of Whether Our Firm Has Ever Been Debarred from Bidding or Proposing Governmental Contracts for the Federal Government or Any State

No Dewberry company has ever been debarred from government contracts (federal or state).

L. Statement as to Whether any Procurement Laws in the State of West Virginia would Affect the Potential Award of a Contract to the Firm for this Project

- PSA-Dewberry is not aware of any procurement laws in the State of West Virginia that would affect the potential award of a contract, including but not limited to
- The requirements of Chapter 5A-3 regarding debts owed to the State of WV
- The requirements regarding a Drug Free Work Place in accordance with Chapter 21 of the WV Code
- And all requirements of the WV Purchasing Office with regards to Antitrust, Licensing and Confidentiality as stated in the Office's purchasing affidavit (01/01/09)

ACORD CERTIFICATE OF LIABILITY INSURANCE

DATE (MM/DD/YYYY)
07/01/2009

PRODUCER MARSH USA, INC. 1255 23RD STREET NW 4th FLOOR WASHINGTON, DC 20037 Attn: TEL: (202) 263-7600 J08590-NJ--09-10	THIS CERTIFICATE IS ISSUED AS A MATTER OF INFORMATION ONLY AND CONFERS NO RIGHTS UPON THE CERTIFICATE HOLDER. THIS CERTIFICATE DOES NOT AMEND, EXTEND OR ALTER THE COVERAGE AFFORDED BY THE POLICIES BELOW.	
	INSURED PSA-DEWBERRY, INC. 8401 ARLINGTON BLVD. FAIRFAX, VA 22031	INSURERS AFFORDING COVERAGE
	INSURER A: Charter Oak Fire Insurance Co.	
	INSURER B: Travelers Prop. Casualty Co. of America	25674
	INSURER C: ACE Property And Casualty Ins Co	20699
	INSURER D: Beazley Insurance Company, Inc.	37540
	INSURER E:	

COVERAGES

THE POLICIES OF INSURANCE LISTED BELOW HAVE BEEN ISSUED TO THE INSURED NAMED ABOVE FOR THE POLICY PERIOD INDICATED. NOTWITHSTANDING ANY REQUIREMENT, TERM OR CONDITION OF ANY CONTRACT OR OTHER DOCUMENT WITH RESPECT TO WHICH THIS CERTIFICATE MAY BE ISSUED OR MAY PERTAIN, THE INSURANCE AFFORDED BY THE POLICIES DESCRIBED HEREIN IS SUBJECT TO ALL THE TERMS, EXCLUSIONS AND CONDITIONS OF SUCH POLICIES. AGGREGATE LIMITS SHOWN MAY HAVE BEEN REDUCED BY PAID CLAIMS.

INSR LTR	ADD'L INSRD	TYPE OF INSURANCE	POLICY NUMBER	POLICY EFFECTIVE DATE (MM/DD/YY)	POLICY EXPIRATION DATE (MM/DD/YY)	LIMITS
A		GENERAL LIABILITY <input checked="" type="checkbox"/> COMMERCIAL GENERAL LIABILITY <input type="checkbox"/> CLAIMS MADE <input checked="" type="checkbox"/> OCCUR GENERAL AGGREGATE LIMIT APPLIES PER: <input checked="" type="checkbox"/> POLICY <input type="checkbox"/> PRO-JECT <input type="checkbox"/> LOC	P6307792B312-COF-09	07/01/09	07/01/10	EACH OCCURRENCE \$ 1,000,000 DAMAGE TO RENTED PREMISES (Ea occurrence) \$ 1,000,000 MED EXP (Any one person) \$ 10,000 PERSONAL & ADV INJURY \$ 1,000,000 GENERAL AGGREGATE \$ 5,000,000 PRODUCTS - COMP/OP AGG \$ 2,000,000
B		AUTOMOBILE LIABILITY <input checked="" type="checkbox"/> ANY AUTO <input type="checkbox"/> ALL OWNED AUTOS <input type="checkbox"/> SCHEDULED AUTOS <input checked="" type="checkbox"/> HIRED AUTOS <input checked="" type="checkbox"/> NON-OWNED AUTOS <input checked="" type="checkbox"/> COMP DED: \$1,000 <input checked="" type="checkbox"/> COLL DED: \$1,000	P810-6102A19A-TIL-09	07/01/09	07/01/10	COMBINED SINGLE LIMIT (Ea accident) \$ 1,000,000 BODILY INJURY (Per person) \$ BODILY INJURY (Per accident) \$ PROPERTY DAMAGE (Per accident) \$
		GARAGE LIABILITY <input type="checkbox"/> ANY AUTO				AUTO ONLY - EA ACCIDENT \$ OTHER THAN EA ACC \$ AUTO ONLY: AGG \$
C		EXCESS/UMBRELLA LIABILITY <input checked="" type="checkbox"/> OCCUR <input type="checkbox"/> CLAIMS MADE <input type="checkbox"/> DEDUCTIBLE <input type="checkbox"/> RETENTION \$	M00534511	07/01/09	07/01/10	EACH OCCURRENCE \$ 1,000,000 AGGREGATE \$ 1,000,000 \$ \$ \$
B		WORKERS COMPENSATION AND EMPLOYERS' LIABILITY ANY PROPRIETOR/PARTNER/EXECUTIVE OFFICER/MEMBER EXCLUDED? If yes, describe under SPECIAL PROVISIONS below	PJ-UB-1722B673-09	07/01/09	07/01/10	<input checked="" type="checkbox"/> WC STATUTORY LIMITS <input type="checkbox"/> OTHER E.L. EACH ACCIDENT \$ 1,000,000 E.L. DISEASE - EA EMPLOYEE \$ 1,000,000 E.L. DISEASE - POLICY LIMIT \$ 1,000,000
D		OTHER PROFESSIONAL LIABILITY ERRORS & OMISSIONS	V15U5A09PNPA	07/01/09	07/01/10	\$2,000,000 PER CLAIM/AGGREGATE

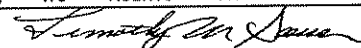
DESCRIPTION OF OPERATIONS/LOCATIONS/VEHICLES/EXCLUSIONS ADDED BY ENDORSEMENT/SPECIAL PROVISIONS
EVIDENCE OF COVERAGE.

CERTIFICATE HOLDER CLE-002363324-03

CANCELLATION

SHOULD ANY OF THE ABOVE DESCRIBED POLICIES BE CANCELLED BEFORE THE EXPIRATION DATE THEREOF, THE ISSUING INSURER WILL ENDEAVOR TO MAIL **30** DAYS WRITTEN NOTICE TO THE CERTIFICATE HOLDER NAMED TO THE LEFT, BUT FAILURE TO DO SO SHALL IMPOSE NO OBLIGATION OR LIABILITY OF ANY KIND UPON THE INSURER, ITS AGENTS OR REPRESENTATIVES.

AUTHORIZED REPRESENTATIVE
of Marsh USA Inc.
Timothy M. Sasser



RONALD J. BUDZINSKI, FAIA

Principal in Charge

Mr. Budzinski has over 36 years of justice planning and design experience. He is Executive Vice President of PSA-Dewberry and nationally directs their Criminal Justice Program. Mr. Budzinski has received numerous recognitions for his design work, and as a registered architect in Illinois, Indiana, Massachusetts, Virginia, and Maryland, has completed projects in 22 states and abroad. He has extensive design experience with special needs correctional facilities.

SELECTED EXPERIENCE

BALTIMORE YOUTH DETENTION CENTER, BALTIMORE, MARYLAND

Principal-in-Charge – This 215,000 SF youth detention center for the Maryland Department of Public Safety and Correctional Services is designed to provide full services, programs and housing for male and female youth being charged as adults, 180 beds expandable to 230, \$65 million (est.), 2011

LANCASTER DETENTION FACILITY, LINCOLN NEBRASKA

Principal-in-Charge - The Lancaster Detention Facility is a two-story, direct supervision, 664-bed facility, designed with support space to expand to 1,000 beds. Additionally, the site has been master planned to expand both bed capacity and support spaces to an ultimate build-out of 1,896 beds, 258,000 SF, \$65 million (est.), 2011

BRAC JOINT REGIONAL CORRECTIONAL FACILITY, NAVAL SUPPORT ACTIVITY NORFOLK - NORTHWEST ANNEX, CHESAPEAKE, VA

Bridging documents for a new 400-bed correctional facility on a 25-acre site at the Naval Support Activity Norfolk – Northwest Annex. The five 80-bed housing modules are divided into two 40-bed units that share decentralized support functions, 210,000 SF

NORTHERN CALIFORNIA WOMEN'S FACILITY RETROFIT FOR RE-ENTRY, STOCKTON, CA

Principal-In-Charge - This 500-bed project includes renovating existing facilities as well as a new 100-bed transition housing unit, and a new medical, mental health and dental building, 2009

TAZEWELL COUNTY JUSTICE CENTER, PEKIN, ILLINOIS

This new County Justice Center contains 91,000 SF of space. The housing capacity of the jail is 225 beds. The facility includes direct supervision housing pods, video arrangement court, video visiting and a 25,000 SF Law Enforcement/Administration component with an 80 capacity training/multipurpose room. The Justice Center is sited with the Pekin City Hall/Police Station to create a Governmental Complex with adjacent county and city buildings in the central business district of Pekin, Illinois, 91,000 SF, \$14.7 million, 2003

EDUCATION

Bachelor of Architecture / University of Illinois / 1971

YEARS EXPERIENCE

PSA-Dewberry: 1971-1980 and
Since 1995
Prior: 15 years

REGISTRATION

Registered Architect in Illinois / 1975;
Indiana, Massachusetts, Virginia,
Maryland, NCARB

PROFESSIONAL AFFILIATIONS

- College of Fellows, American Institute of Architects
- American Correctional Association
- National Sheriff's Association
- American Jail Association
- American Correctional Association's Commission on Accreditation for Corrections (2006-2010 term)

MARLENE W. SHADE, AIA, LEED AP

Project Manager

Marlene has 30 years of architectural experience with a wide variety of public building types including numerous correctional and detention facilities. Her focus is on achieving functional projects that not only meet programmatic needs, but are also delivered within the specified budget and time schedule. She also has extensive construction administration experience that includes responding to bidding and construction inquiries from the field. Marlene serves as PSA-Dewberry's Mid-Atlantic leader for sustainable design, overseeing the LEED certification process on projects and leading in-house training sessions.

SELECTED EXPERIENCE

RAPPAHANNOCK REGIONAL JAIL EXPANSION, STAFFORD, VIRGINIA

Manager for the design-build PPEA implementation of significant additions to the existing regional jail. Added two new housing structures that nearly doubled the facility's rated capacity to a total of 1,024 beds. The existing structure was also renovated to increase storage, reconfigure visitation, add a new magistrate's space, and improve intake areas. \$48.8M; 2008

CENTRAL VIRGINIA REGIONAL JAIL ADDITIONS AND RENOVATIONS, ORANGE, VIRGINIA

Architect of 100-bed housing expansion and interior renovation of existing regional jail. Project included expansion of visitation, laundry, and administration, construction of new special needs housing and a new vehicle sallyport, and major site improvements. \$5.1M; 2001

BRAC JOINT REGIONAL CORRECTIONAL FACILITY, NAVAL SUPPORT ACTIVITY NORFOLK - NORTHWEST ANNEX, CHESAPEAKE, VA

Bridging documents for a new 400-bed correctional facility on a 25-acre site at the Naval Support Activity Norfolk - Northwest Annex. The five 80-bed housing modules are divided into two 40-bed units that share decentralized support functions, 210,000 SF

FREDERICK COUNTY WORK RELEASE/SUBSTANCE ABUSE CENTER, FREDERICK, MARYLAND

Project Manager for the latest phase of expansion to the County ADC. This addition will provide 112 new general housing unit beds as well as a 24-bed centralized medical unit to serve the detention facility. \$9.1M (est.); 2009 (est.)

FREDERICK COUNTY ADULT DETENTION CENTER PHASE IV EXPANSION, FREDERICK, MARYLAND

Project Manager for the latest phase of expansion to the County ADC. This addition will provide 112 new general housing unit beds as well as a 24-bed centralized medical unit to serve the detention facility. \$9.1M (est.); 2009 (est.)

EDUCATION

Master of Architecture / 1984
Bachelor of Science / 1977

YEARS EXPERIENCE

30 years

REGISTRATION

Registered Architect in Illinois
LEED Accredited Professional

BRADLEY R. HALL, AIA

Senior Project Architect

Mr. Hall is highly experienced in all phases of the architectural design process from predesign, schematic design, design development, construction documents, and bidding through construction administration. He provides building code reviews and coordination of architectural drawings with all engineers with respect to building layout, constructability, mechanical systems, structural systems, and value engineering. He is involved in the complete process of quality assurance reviews, cost estimates, shop drawing reviews, and he responds to inquiries in relation to bidding and construction documents.

SELECTED EXPERIENCE

BRAC JOINT REGIONAL CORRECTIONAL FACILITY, NAVAL SUPPORT ACTIVITY NORFOLK - NORTHWEST ANNEX, CHESAPEAKE, VA

Bridging documents for a new 400-bed correctional facility on a 25-acre site at the Naval Support Activity Norfolk - Northwest Annex. The five 80-bed housing modules are divided into two 40-bed units that share decentralized support functions, 210,000 SF

LANCASTER DETENTION FACILITY, LINCOLN NEBRASKA

Project Manager - The Lancaster Detention Facility is a two-story, direct supervision, 664-bed facility, designed with support space to expand to 1,000 beds. Additionally, the site has been master planned to expand both bed capacity and support spaces to an ultimate build-out of 1,896 beds, 258,000 SF, \$65 million (est.), 2011

RAPPAHANNOCK REGIONAL JAIL ADDITION, STAFFORD, VIRGINIA

In June of 2000, the jail moved into a new 264,000 SF, state-of-art correctional facility. The original project cost was \$51.4 million. The average daily inmate count is currently in excess of 800 inmates. The new project consists of a 432-bed addition and renovation and expansion of support space \$49 million, 2008

FREDERICK COUNTY NEW WORK RELEASE/SUBSTANCE ABUSE CENTER, FREDERICK, MARYLAND

Project Architect for the design of a new, 128-bed, two-story Work Release/Substance Abuse Facility The new Work Release facility was designed as a "college dormitory" style, minimum-security facility housing 112 male and 16 female non-violent offenders. The building includes a central court serving as an additional day room space, treatment, library, classroom, and other programmed activity spaces, 25,600 SF, \$3.45 million (low bid), 2004 (est.)

FREDERICK COUNTY EXISTING WORK RELEASE CENTER CONVERSION, FREDERICK, MARYLAND

Project Architect for the conversion of the of the existing 15,000sf work release unit into additional administrative offices, a locker room and a muster room for the Frederick County Sheriff Department's staff and lease space for the Maryland District Court, 15,000 SF, \$1.7 million (est.), 2005 (est.)

CENTRAL VIRGINIA REGIONAL JAIL, ORANGE, VIRGINIA

Senior Correctional Architect for design of a 100-bed housing expansion and interior renovation of existing regional jail, 23,000 SF, \$5.1 million, 2001

EDUCATION

Illinois Central College and UTI
Technical School / 1973

YEARS EXPERIENCE

PSA-Dewberry: Since 1984
Other: 11 years

REGISTRATION

- Registered Architect in Illinois /1990, Minnesota, Kentucky, Louisiana, NCARB/1991
- Certified Plans Examiner for BOCA, 1995
- Certified Plans Examiner for SBCCI, 1995

PROFESSIONAL AFFILIATIONS

- American Institute of Architects
- American Correctional Association
- American Jail Association
- National Fire Protection Association
- International Conference of Building Officials
- Building Officials and Code Administration
- Peoria Chamber of Commerce
Community Leadership School
- Southern Building Code Congress International
- Member, Knowledge Committee, AIA
National Committee for the Center for Building Science and Performance (2006-present)

SPEAKING ENGAGEMENTS

Speaker - "What the Code Official Doesn't Know Can Hurt You"
AIA National Convention, Boston, 2008
AIA North Carolina Convention, 2008
AIA Virginia Convention, 2008

JAMES L. BEIGHT, AIA

Senior Project Designer

Mr. Beight has nearly 30 years of experience and is an award-winning designer of public projects with a specialized background in justice and law enforcement projects. He was the lead planner for the firm on both the District of Columbia Metropolitan Police Department's Public Safety Complex study and with the St. Elizabeth's Hospital Campus Master giving him important experience on large scale public safety feasibility studies and site analysis projects. He also was the Lead Designer of the City of Denver Police Station Prototype that has received numerous AIA local and regional awards, and the lead designer of the Arlington County Courthouse. He was also the AIA national designee to the ACCESS Board's committee for the development of accessibility guidelines for courthouses.

SELECTED EXPERIENCE

Rappahannock Regional Jail Expansion (Design), Rappahannock Regional Jail, Stafford, VA. . Two new housing structures are being added onto the existing facility: a two-story building housing nine 48-bed pods of varying security levels and a single-story structure housing 48 segregation beds. These additions add 432 beds, increasing the facility's rated capacity to 1,024 beds. The existing structure is also being renovated to increase storage, reconfigure visitation, add a new magistrate's space, and improve intake areas. This design/build project is among the first projects to be constructed under Virginia's Public Private Education Facilities and Infrastructure Act (PPEA) of 2002. 111,335 SF; \$57.4M (est.); 2008 (est.)

Frederick County Work Release, Frederick County, , MD. Principle-in-Charge/ Designer Designed a new stand-alone, 128-bed, two-story work release community corrections center. 2005.

Central Virginia Regional Jail Addition, Central Virginia Regional Jail, Orange, VA. Principal-in-Charge/ Lead Designer 100-bed addition to existing Regional Jail, serving the counties of Fluvanna, Greene, Louisa, Orange and Madison. Additions included two dormitories, new laundry facilities, infirmary and segregated housing unit expansion of existing visitation and administration. The project came in under budget and allowed for inclusion of an alternate to expand vehicular sally part. 2001.

Tazewell County Justice Center, Tazewell County, Pekin, IL. Planner. Dewberry performed a needs assessment and project indemnification of a new facility for the Pekin Police Department and the Tazewell County criminal justice system, including areas of adult and juvenile detention, sheriff's law enforcement, courts and necessary court supporting agencies. 2003.

Loudoun County Adult Detention Center Phase II Expansion Planning Study, , Leesburg, VA. Provided the planning study for the expansion of the existing Loudoun County ADC. The study was used by the County to secure funding for what is anticipated to be a 256-bed expansion.

EDUCATION

- MArch, Architecture, University of Florida, 1986
- BS, Design, University of Florida, 1977

REGISTRATIONS

- Registered Architect, Pennsylvania, 2004
- Registered Architect, Florida, 1986
- Registered Architect, Maryland, 2004
- Registered Architect, Virginia, 1993

AFFILIATIONS

- American Institute of Architects
- National Association of Courts Management
- Mid-Atlantic Association of Courts Management

YEARS OF EXPERIENCE

- PSA - Dewberry: Since 11
- Other: 18 years

J. MICHAEL HENSON

Technology/Security Designer

Mr. Henson has more than 27 years of professional experience. He is the leader of the PSA-Dewberry Technology Studio which serves as a national technical design resource for the entire Dewberry enterprise. He has extensive experience planning, designing and managing complex municipal, state, federal and private sector security projects.

SELECTED EXPERIENCE

RAPPAHANNOCK REGIONAL JAIL EXPANSION, STAFFORD, VIRGINIA

Manager for the design-build PPEA implementation of significant additions to the existing regional jail. Added two new housing structures that nearly doubled the facility's rated capacity to a total of 1,024 beds. The existing structure was also renovated to increase storage, reconfigure visitation, add a new magistrate's space, and improve intake areas. \$48.8M; 2008

WESTERN TIDEWATER REGIONAL JAIL - SECURITY AND LIFE SAFETY RENOVATION - SUFFOLK, VIRGINIA

The PSA-Dewberry Technology Studio renovated the security electronics system including new PLC-based touch screen system integrating; door control and monitoring, CCTV system and security intercom/paging. Each control room will be renovated with new casework and equipment. A new addressable fire alarm system will be installed throughout the entire facility to achieve a required code compliance including full annunciation in control rooms. Modifications to the fire suppression system will occur to improve operational use of the system, 157,000 SF, \$3 million, 2007

LAFAYETTE PARISH CORRECTIONAL CENTER - LAFAYETTE, LOUISIANA

A comprehensive security electronics needs assessment developed a plan for replacement of an outdated graphic panel design security control system. Once the needs assessment was approved, the project was executed in two phases:

- Phase I - New maintenance building inside security fence and exterior window modification, \$1.2 million, 2004
- Phase II - Security electronics system renovation and new first floor mechanical renovation to intake/booking/medical area. New security will include Programmable Logic Controller-Based Security Controls System for the entire facility with Touch Screen integrating; door control and monitoring, a new closed-circuit television system, including digital recording and replacement of the facility intercom system, \$4 million, 2005

Associate Architect: Poché Prouet Associates

CENTRAL VIRGINIA REGIONAL JAIL ADDITIONS AND RENOVATIONS, ORANGE, VIRGINIA

100-bed housing expansion and interior renovation of existing regional jail. Project involved relocation of perimeter fencing and major site improvements. Limited existing control systems were renovated and integrated into a new state-of-the-art Touch Screen/PLC based Electronic Security Control system. The system incorporates door control and monitoring, intercommunication, duress monitoring, nurse call, surveillance, and lighting and power control into a simple-to-operate Graphical User Interface, 23,000 SF, \$5.1 million, 2001

EDUCATION

Illinois State University / Bachelor of Business Administration / Associate of Industrial Electronics / 1980
University of Wisconsin / Industrial Security System Design & Application / 1991

YEARS EXPERIENCE

PSA-Dewberry: Since 1991
Prior: 12 years

REGISTRATION

Illinois Department of Professional Regulation - Class C Professional Private Security Alarm Contractor License, 1988

PROFESSIONAL AFFILIATIONS

- American Correctional Association (ACA)
- American Society of Industrial Security (ASIS)
- Building Industry Consulting Services International (BICSI)
- National Systems Contractors Association (NSCA)
- American Institute of Architects (Associate Member)

ALEXANDER HAILL

ahail@alphaaec.com

SUMMARY

Mr. Haill is a Field Service Representative in the Morgantown office. Within his professional career, Mr. Haill has created his own construction company, commercial architectural interior design office, and managed and directed various other successful architectural and engineering design facilities.

PROFILE

Broad-based responsibilities in the following areas:

- Contractor Relationships
- Construction Inspections
- Shop Drawing Review
- Historic Renovation
- Historic Preservation

PROFESSIONAL HIGHLIGHTS

CONSTRUCTION ADMINISTRATION:

- West Virginia Medal of Honor Recipients Plaza; Hazelton, WV
- West Virginia Division of Highways I-77 Welcome Center; Williamstown, WV
- Wyoming County Westside High School; Wyoming County, WV
- Hazel Ruby McQuain Riverfront Park Amphitheater Roof Project; Morgantown, WV
- WVU South Agricultural Sciences; Morgantown, WV
- Hartfield Maintenance Building

EMPLOYMENT HISTORY

PRIVATE INDUSTRY:	2001 – Current	Alpha Associates, Incorporated
	1983 – 2000	Alexander Key and Associates, LLC
	1995 – 1998	Absolute Construction Co.
	1978 – 1983	K & H Laminates
	1970 – 1978	Russell William, Ltd.

AFFILIATIONS

PROFESSIONAL: American Institute of Architects; Member
AIA Committee on Livable Communities; Board Member
National Trust for Historic Preservation

CIVIC: City of Fairmont, Historic Preservation Review Commission; Board Member
North Eastern Bison Association
Habitat for Humanity; Board Member



SUMMARY

Mr. Miller has gained experience in all phases of surveying with numerous civil engineering and site development projects throughout West Virginia and Pennsylvania. These project surveys include highway construction, power plant construction, geodetic survey control, boundary, topographic, subdivision layout, waterline construction, sanitary sewer line construction and storm drainage structure layout.

PROFILE

Broad-based responsibilities in the following areas:

- Surveying Technology
- Surveying

PROFESSIONAL HIGHLIGHTS

SURVEYING:

- Chemtura Plant 3-D Pipe Survey – Morgantown, WV
- Power Plant Construction Surveying – Ft. Martin, WV
- Hart Field Airport – GPS Control Network, Boundary Survey and Various Construction Surveys in Monongalia County, WV.
- WVU Engineering Sciences Building, Topographic Survey – Morgantown, WV
- Augusta Project for McCoy 6, Boundary Survey – Morgantown, WV
- Greenbrier County Subdivision, Topographic and Boundary Survey – Lewisburg, WV
- Pittsburgh International Airport, GPS Control Network and Boundary Survey – Pittsburgh, PA
- PA Turnpike Commission – Findlay Connector, Stakeout References and Road Alignments – Washington County and Allegheny County, PA
- Penn DOT – Rt. 22 Widening Reconstruction, Stakeout References and Road Alignments – Indiana County and Cambria County, PA

EMPLOYMENT HISTORY

PRIVATE INDUSTRY:

2006 – Current	Alpha Associates, Incorporated
1999 – 2006	Monaloh Basin Engineers
1998 – 1998	Nemacolin Woodlands Resort & Spa
1996 – 1998	Mon-Valley Surveying

EDUCATION

UNDERGRADUATE:

West Virginia University
BS – Business Management – Human Resources, 1994

Potomac State College of West Virginia University
AA – Business and Economics, 1992



BRADLEY D. MILLER, PS

bmill@alphaaec.com

QUALIFICATIONS

LICENSE:

Professional Surveyor:
West Virginia

AFFILIATIONS

West Virginia Society of Professional Land Surveyors



SUMMARY

As Chief Engineer for site development and planning projects, Mr. Branch is a vital part of the design process at Alpha. His involvement spans from strictly civil engineering projects, to the design of large scale educational projects and medical facilities. Mr. Branch acts as peer review for young engineers in the firm on issues ranging from storm water management to site design. Mr. Branch is also involved in commercial and residential development design, roadway and bridge design and utilities layout.

PROFILE

Broad-based responsibilities in the following areas:

- Highway Design
- Municipal Engineering
- Wastewater Collection
- Storm Sewer/Storm Water Management Design
- Site Engineering
- Project Management

PROFESSIONAL HIGHLIGHTS

Highway Design:

- Blackshere Bridge – Mannington, WV
- I-68 Welcome Center – Hazelton, WV
- I-77 Information Center – Williamstown, WV
- Lewis County High School Bridge – Weston, WV
- Wyoming County Route 10 Relocation – Wyoming County, WV

Commercial Site Plans:

- West Virginia High Technology Consortium - Fairmont, WV
- West Virginia University Alumni Center – Morgantown, WV
- WVU Health Sciences Center Eastern Division – Martinsburg, WV
- Residence Inn – Morgantown, WV
- FFCU – Charles Pointe – Bridgeport, WV

Recreational Facilities Projects:

- Wyoming County Westside High School Athletic Facilities – Wyoming County, WV
- East/West Stadium Turf Replacement – Fairmont, WV
- Washington High School Athletic Complex – Charles Town, WV

Educational Projects:

- Anna Jarvis Elementary School – Grafton, WV
- Lewis County High School – Weston, WV
- Wyoming County East High School – Wyoming County, WV
- Wyoming County Westside High School – Wyoming County, WV
- Washington High School – Charles Town, WV



CHARLES B. BRANCH, PE

cbranch@alphaaec.com

EMPLOYMENT HISTORY

PRIVATE INDUSTRY: 1992 – Present Alpha Associates, Incorporated
1988 – 1992 Reimer, Muegge, & Associates, Inc.

EDUCATION

UNDERGRADUATE: Fairmont State College
BS – Architectural Engineering Technology 1988
West Virginia University
BS – Civil Engineering 2000

QUALIFICATIONS

LICENSE: Professional Engineer
West Virginia



SUMMARY

Mr. Luttrell has worked with Alpha Associates, Inc. since 1996. He is the chief structural engineer for Alpha on all projects at Alpha. Before coming to Alpha, Mr. Luttrell's graduate work resulted in several contributions to the cold-formed steel deck industry. His new method of analysis for non-uniform loads on composite concrete and cold-formed steel decks has been made a permanent part of the *Steel Deck Institute's* design manual. Mr. Luttrell also worked on projects that involved pre-stressed timber bridge research with the West Virginia University Constructed Facilities Center. Since coming to Alpha, Mr. Luttrell has had a significant involvement in the effort to begin utilizing modern composite materials in practical bridge applications. Two recent Alpha bridge projects have been designed using these innovative materials.

PROFILE

Broad-based responsibilities in the following areas:

- Bridge Structural Design and Analysis
- Innovative Bridge Materials Applications
- Building Structural Design and Analysis
- Historical Restoration and Evaluations

PROFESSIONAL HIGHLIGHTS

STRUCTURAL ENGINEER:

- Hazel Ruby McQuain Amphitheater Roof, Morgantown, WV
- West Buckeye Bridge, Core, WV
- South Jefferson High School, Charles Town, WV
- WVU Coliseum Asbestos Abatement Project (Scaffolding Design and Dome Structural Inspection); Morgantown, WV
- Morgantown Airport Air Rescue and Firefighting Building; Morgantown, WV
- WVU Coliseum Scoreboard Hoist Project; Morgantown, WV

PROJECT MANAGER:

Bridge Design:

- Blackshere Bridge; Mannington, WV
- South High Street Bridge; Morgantown, WV
- Market Street Bridge; Wheeling, WV
- West Buckeye Bridge; Core, WV
- Simpson Creek Covered Bridge; Marion County, WV
- Fletcher Covered Bridge; Marion County, WV
- Elkins Bypass, Spur A Bridge; Elkins, WV



EMPLOYMENT HISTORY

PRIVATE INDUSTRY:	1996 – Current	Alpha Associates, Incorporated
	1995 – 1996	Larry D. Luttrell, PE, Ph D
	1991 – 1994	West Virginia University
	1990 – 1991	WVU Constructed Facilities Center

EDUCATION

GRADUATE:	West Virginia University MS – Structural Engineering; 1995
UNDERGRADUATE:	West Virginia University BS – Civil Engineering; 1993

QUALIFICATIONS

LICENSE:	Professional Engineer: West Virginia, Maryland, Pennsylvania
-----------------	---

AFFILIATIONS

PROFESSIONAL:	West Virginia Society of Professional Engineers National Society of Professional Engineers Chi Epsilon; Member American Concrete Institute; Member Structural Engineering Certification Board
----------------------	---

RESEARCH EXPERIENCE

STRUCTURAL:	Cold Formed Steel Deck Research <ul style="list-style-type: none">• Fastener failures• Edge conditions/failures• Buttoned overlap shear failures Composite Cold Formed Steel and Concrete Deck Research <ul style="list-style-type: none">• Line load behavior/failures• Concentrated load behavior/failures• Web crippling• Punch failures
--------------------	--



SUMMARY

Mr. Davison is the Vice President of Alpha Associates, Inc. Mr. Davison joined the firm in November of 1977. He became a principal of the firm and Vice President in 1980. He has designed numerous structures, including research facilities, post offices, religious facilities, commercial and office buildings, and educational and medical facilities. The West Virginia Society of Architects has recognized Mr. Davison for his excellence in architecture with design awards for the Engineering Research Building at West Virginia University in Morgantown, WV, Wheeling College Chapel in Wheeling, WV, Morgantown High School Addition in Morgantown, WV and the KCAD Professional Office Building located in Martinsburg, WV.

PROFILE

Broad-based responsibilities in the following areas:

- Educational Architecture
- Medical Architecture
- Religious Architecture
- Quality Control
- Client Development
- New Business Development

PROFESSIONAL HIGHLIGHTS

Higher Educational Facilities:

- Agricultural Sciences Building Addition, West Virginia University; Morgantown, WV
- Prichard Hall Renovation, Fairmont State University; Fairmont, WV
- Engineering Science Building, East Wing Addition; Morgantown, WV
- Engineering Research Building; Morgantown, WV
- National Research Center for Coal and Energy, West Virginia University; Morgantown, WV
- Student Leader Housing, West Virginia University; Morgantown, WV
- Galli Laboratory, West Virginia University; Morgantown, WV

K-12 Educational Facilities:

- Washington High School, Charles Town, WV
- Westside High School; Clearfork, WV
- Wyoming East High School; New Richmond, WV
- Lewis County High School; Weston, WV
- Morgantown High School Addition/Renovation; Morgantown, WV
- Ridgedale Elementary School Addition; Morgantown, WV

Medical Facilities:

- Ruby Memorial Hospital Emergency Addition; Morgantown, WV
- Sundale Nursing Home Renovation/Addition; Morgantown, WV



Miscellaneous Architectural Design:

- Upshur County Senior Opportunity Center; Buckhannon, WV
- West Virginia Medal of Honor Recipients Memorial Plaza; Hazelton, WV
- Cumberland Valley Railroad Depot (KCAD Properties Professional Office); Martinsburg, WV
- Ronald McDonald House; Morgantown, WV
- Jenkins Ford; Buckhannon, WV

EMPLOYMENT HISTORY

PRIVATE INDUSTRY:	1977 – Current	Alpha Associates, Incorporated
	1976 – 1977	Carl G. Baker, Architects
	1974 – 1976	Architectural Firm of Laurie and Green
	1966 – 1974	Michael S. Molnar Associates

EDUCATION

UNDERGRADUATE:	Pennsylvania State University Bachelor of Architecture; 1973
-----------------------	---

QUALIFICATIONS

LICENSE:	Registered Architect: West Virginia, Pennsylvania, Maryland, Virginia, Ohio NCARB Certified
-----------------	---

AFFILIATIONS

PROFESSIONAL:	American Institute of Architects West Virginia Society of Architects Council of Educational Facility Planners International American Arbitration Association Interfaith Forum on Religion, Art and Architecture
CIVIC:	Main Street Morgantown

AWARDS

DESIGN AWARDS:	West Virginia Society of Architects Design Awards: KCAD Professional Office Building Morgantown High School Engineering Research Building Wheeling College Chapel
-----------------------	---



**MATTHEW S. BREAKEY, AIA,
LEED-AP**

mbreaky@alphaaec.com

SUMMARY

Mr. Breakey has gained experience through working as a Project Manager on major capital construction projects throughout West Virginia. As a key player in the Open End Contract with West Virginia University, Mr. Breakey deals with projects from schematic design to project close out.

PROFILE

Broad-based responsibilities in the following areas:

- Architectural Design
- Construction Administration
- Contract Negotiations
- New Business Development

PROFESSIONAL HIGHLIGHTS

Higher Education Projects:

- Potomac State College, ADA Connector Link; Keyser, WV
- WVU Engineering Sciences Building East Wing Renovation/Addition; Morgantown, WV
- WVU Engineering Sciences Building 10th Floor Renovation; Morgantown, WV
- WVU Engineering Science Building Nano/Microtechnology Lab; Morgantown, WV
- WVU Alfred F. Galli Laboratory Renovations; Morgantown, WV

K-12 Education Projects:

- Washington High School, Charles Town, WV
- Pocahontas County High School Science Wing Renovation/Addition; Marlinton, WV
- Buckhannon Upshur Middle School Roof Replacement; Buckhannon, WV
- Buckhannon Upshur Middle School HVAC Upgrades; Buckhannon, WV
- Slanesville Elementary School Addition; Hampshire County, WV
- Petersburg High School Science Lab Renovation; Petersburg, WV

Miscellaneous:

- Clear Mountain Bank, Reedsville Branch; Reedsville, WV
- BC Bank Renovation/Addition, Philippi Branch; Philippi, WV
- Clear Mountain Bank, Oakland Branch; Oakland, MD
- Fairmont Federal Credit Union, Charles Pointe Branch; Bridgeport, WV
- Robert C. Byrd Health Sciences Center SRP Lab Renovation; Morgantown, WV



**MATTHEW S. BREAKEY, AIA,
LEED-AP**

mbreaky@alphaaec.com

- Upshur County Senior Opportunity Center Renovation and Addition; Buckhannon, WV
- Summersville Municipal Building; Summersville, WV
- Hart Field Air Rescue Fire Fighting Building; Morgantown, WV
- Brucefon Bank, Sabraton Branch; Morgantown, WV
- Camp Dawson Billeting Facilities; Kingwood, WV

EMPLOYMENT HISTORY

PRIVATE INDUSTRY:	1998 – Current	Alpha Associates, Incorporated
	1994 – 1998	West Virginia University Physical Plant Engineering and Construction
	1992 – 1994	West Virginia University Facilities Planning Management

EDUCATION

UNDERGRADUATE:	Pennsylvania State University
	Bachelor of Architecture; 1992
	Bachelor of Science in Architecture; 1991

QUALIFICATIONS

LICENSE:	Registered Architect: West Virginia; Maryland
	NCARB Certified
	Leadership in Energy and Environmental Design Accredited Professional

AFFILIATIONS

PROFESSIONAL:	American Institute of Architects
	West Virginia Society of Architects
	The Council of Educational Facility Planner International
	U.S. Green Building Council

CIVIC:	Main Street Morgantown Board of Directors; Past President
	Main Street Morgantown Design Committee; Member
	Chestnut Ridge Park Board; Past President



SUMMARY

Mr. Colebank is President and Chief Operating Officer of the firm. Mr. Colebank has been with Alpha Associates, Incorporated since 1985. He began his career with Alpha as a staff engineer and progressed through the ranks from Project Manager to his current position. Mr. Colebank has worked with diverse clients such as West Virginia University, City of Morgantown, The West Virginia Division of Highways, WVU Foundation and the Morgantown Municipal Airport, as well as numerous private clients. Since 1988, Mr. Colebank has been the Principal-In-Charge of many of the Civil Engineering projects developed at Alpha. In his current capacity, Mr. Colebank provides financial and administrative guidance for the day-to-day operations of the company while continuing to manage Civil Engineering Projects.

PROFILE

Broad-based responsibilities in the following areas:

- Project Management
- Business Operations and Financial Management
- Quality Assurance/Quality Control
- Civil Engineering Project Management and Design
- New Business Development

PROFESSIONAL HIGHLIGHTS

PRINCIPAL-IN-CHARGE

Transportation Projects:

- Morgantown Municipal Airport-IDIQ Contract; Morgantown, WV
- Route 10 Relocation; Wyoming County, WV
- South High Street Bridge Replacement; Morgantown, WV
- Blackshere Bridge Replacement; Mannington, WV
- Lewis County High School Access Road and Bridge; Weston, WV
- University Avenue/Stadium Loop; Morgantown, WV
- West Buckeye Bridge; Blacksville, WV

Civil Engineering Projects:

- Monongalia General Hospital; Morgantown, WV
- WVU Research Park; Morgantown, WV
- West Virginia Medal of Honor Recipients Plaza; Hazelton, WV
- West Virginia Division of Highways I-77 Welcome Center; Williamstown, WV
- West Virginia High Technology Consortium Site Work; Fairmont, WV
- Greystone on the Cheat through Phase II; Morgantown, WV

Indefinite Delivery/Indefinite Quantity Contracts:

- Morgantown Municipal Airport Open End Contract; Morgantown, WV
- West Virginia Division of Highways Open End Contract; State of WV
- National Energy Technology Laboratories; Morgantown, WV
- West Virginia University Open End Contract; State of WV



EMPLOYMENT HISTORY

PRIVATE INDUSTRY: 1985 – Present Alpha Associates, Incorporated
1983 – 1985 Charles Townes and Associates, P.C.

CORPS OF ENGINEERS: 1983 US Army Corps of Engineers

EDUCATION

GRADUATE: West Virginia University
Masters – Business Administration; 1999

UNDERGRADUATE: West Virginia University
BS – Civil Engineering; 1982

QUALIFICATIONS

LICENSE: Professional Engineer:
West Virginia, Pennsylvania, Maryland, Virginia, Ohio
Professional Surveyor:
West Virginia
Certified Private Pilot

AFFILIATIONS

PROFESSIONAL: West Virginia Society of Professional Engineers; Member
American Society of Civil Engineers; Member
National Society of Professional Engineers; Member
Former NSPE/PEPP Governor of WV
ACEC/WV; President

CIVIC: University High School Foundation; Charter Member; Current
President
Morgantown Area Chamber of Commerce; Past Chairman
Arts Monongalia Board; Member
Monongalia County MPO Technical Advisory Committee;
Member
Morgantown Area Economic Partnership; Member
University High School Athletic Booster; Member
Aircraft Owners and Pilots Association (AOPA)
University High School Athletic Field Committee





Mr. Boderocco is responsible for the engineering design and master planning of correctional facilities, colleges and universities, schools, laboratories, health care facilities, commercial office buildings, and industrial facilities for private, public, and governmental clients. His projects have involved mechanical/electrical systems design for new buildings, HVAC and electrical systems retrofit, building energy conservation, institutional heating plant designs, and civil and municipal engineering. As Principal-in-Charge, he is responsible for client contact; contract development and negotiation; establishing the project scope, timetable, and overall system concepts; preparing reports and cost estimates; monitoring design to ensure quality and coordination; construction management; and other project management functions. His projects include:

Forest County State Correctional Institution
Marienville, Pennsylvania
New 700,000 sq.ft. minimum, medium, and maximum security facility to house 2,000 inmates that consists of 19 buildings on a 76 acre site; includes facility administration and security administration buildings

Pine Grove and Coal Township State
Correctional Institutions
Pennsylvania
Bridging documents for new 128 cell additions to each L-3 facility

Cambridge Springs State Correctional
Institution
Pennsylvania
Bridging documents for new 128 cell addition to an L-3 facility

Forest County State Correctional Institution
Marienville, Pennsylvania
Bridging documents for new 96 cell addition to an L-5 facility

Fayette State Correctional Institution
Labelle, Pennsylvania
Replacement of the high temperature hot water heating lines

Education

Bachelor of Science, Environmental Engineering, 1978 Pennsylvania State University

Experience

H.F. Lenz Company 1978 - Present
Pennsylvania State University 1978

Professional Registration / Certification

Licensed Professional Engineer in Pennsylvania

Professional Affiliations

National Society of Professional Engineers • Pennsylvania Society of Professional Engineers • American Hospital Association • American Society of Heating, Refrigerating and Air-Conditioning Engineers • American Water Works Association • International Society for Pharmaceutical Engineering

City of Suffolk Jail
Suffolk, Virginia
New 350-bed facility

Heritage Health System, The Medical Center
Beaver, Pennsylvania
Psychiatric, neuropsychiatric, and adolescent psychiatric units

Pennsylvania Soldiers and Sailors
Erie, Pennsylvania
New 32-bed unit for patients with dementia or Alzheimer's disease

Hamot Hospital
Erie, Pennsylvania
– *Mental Health Department*
– *Isolation room study*
– *Facility-wide sprinkler system*

Laurel Crest Manor
Ebensburg, Pennsylvania
– *Alzheimer's unit*
– *Various multi-discipline renovations for 370-bed nursing home*

Edinboro University of Pennsylvania
Edinboro, Pennsylvania
Renovations to five dormitory buildings



Mr. Kormanik has designed complete plumbing and sprinkler systems for correctional institutions, industrial facilities, office buildings, schools, colleges, hospitals, laboratories, and military installations. He is responsible for plumbing and sprinkler system design, layout, calculations; selection and sizing of equipment; cost estimates; and site surveys and is knowledgeable of all applicable plumbing codes. He supervises drafting personnel; coordinates the plumbing design with utility companies, with other trades, and with the project engineer and project architect, and is responsible for assembling complete and accurate plumbing bid documents which meet H.F. Lenz Company standards.

Mr. Kormanik also conducts evaluations and prepared reports of existing plumbing and sprinkler systems for commercial and institutional facilities. His project experience includes:

Forest County State Correctional Institution
Marienville, Pennsylvania
New 700,000 sq.ft. minimum, medium, and maximum security facility to house 2,000 inmates that consists of 19 buildings on a 76 acre site; includes facility administration and security administration buildings

Pine Grove and Coal Township State
Correctional Institutions
Pennsylvania
Bridging documents for new 128 cell additions to each L-3 facility

Cambridge Springs State Correctional
Institution
Pennsylvania
Bridging documents for new 128 cell addition to an L-3 facility

Forest County State Correctional Institution
Marienville, Pennsylvania
Bridging documents for new 96 cell addition to an L-5 facility

Fayette State Correctional Institution
Labelle, Pennsylvania
Replacement of the high temperature hot water heating lines

U.S. Army Corps of Engineers
Baltimore District, Indefinite Delivery Contract
Plumbing and site design including underground water service and design of all potable water systems for new reserve centers in Pennsylvania and West Virginia:

- Morgantown, WV: 300-member reserve center with a 21,700 sq.ft. administration/training building and a 5,500 sq.ft. four-bay organizational maintenance shop
- Kingwood, WV: 100-member reserve center with a 19,000 sq.ft. administration/training building and a 5,000 sq.ft. four-bay organizational maintenance shop
- Elkins, WV: 60-member reserve center with a 12,000 sq.ft. administration/training building and a 4,200 sq.ft. three-bay organizational maintenance shop
- Brownsville, PA: 200-member reserve center with a 20,000 sq.ft. administration/training building and a six-bay organizational maintenance shop
- Beckley, WV: 300-member reserve center with a 27,500 sq.ft. training building and a 2,709 sq.ft. organizational maintenance shop
- Rainelle, WV: 200-member reserve center with 19,444 sq.ft. training building and a 7,532 sq.ft. organizational maintenance shop

Education

Associate, 1983, Interior Design

Experience

H.F. Lenz Company 1985 - Present

Professional Certification

Certified in Plumbing Design, ASPE
Certified Plumbing Plans Examiner (BOCA)
Certified Plumbing Inspector (BOCA)



**H.F. LENZ
COMPANY**

Jeffrey A. McKendree, C.E.T.

**Fire Protection Designer
NICET Level III Automatic Sprinkler System Layout**

Mr. McKendree is a graduate of Eastern Kentucky University's Fire and Safety Engineering program, a program of distinction in the Commonwealth of Kentucky as certified by the Commonwealth of Kentucky Board of Higher Education. Mr. McKendree's experience prior includes conducting site inspections for emergency incident planning in Lower Paxton Township in suburban Harrisburg, Pennsylvania. Typical sites included educational, industrial, manufacturing, and mercantile properties. These plans have been utilized to protect lives and property from the effects of fire through the use of NFPA and local standards for safety.

He is fully knowledgeable of NFPA standards and is experienced in the design of wet, dry, preaction, deluge, and special application fire protection systems. He is responsible for sprinkler system design, layout, and calculations; selection and sizing of fire protection equipment; cost estimates; and site survey work. Mr. McKendree coordinates with other trades, municipal fire protection authorities, utility companies, and with the Project Engineer and project Architect. While attending Eastern Kentucky University, Mr. McKendree earned Golden Key National Honor Society, Alpha Phi Sigma, and Who's Who Among American College Students nominations. Mr. McKendree has been involved in the design of fire protection systems for the following projects:

Forest County State Correctional Institution
Marienville, Pennsylvania
New 700,000 sq.ft. minimum, medium, and maximum security facility to house 2,000 inmates that consists of 19 buildings on a 76 acre site; includes facility administration and security administration buildings

Pine Grove and Coal Township State
Correctional Institutions
Pennsylvania
Bridging documents for new 128 cell additions to each L-3 facility

Cambridge Springs State Correctional
Institution
Pennsylvania
Bridging documents for new 128 cell addition to an L-3 facility

Forest County State Correctional Institution
Marienville, Pennsylvania
Bridging documents for new 96 cell addition to an L-5 facility

Carnegie Mellon University
Pittsburgh, Pennsylvania
Fire protection designer for the master plan and design of new sprinkler systems and related fire alarm upgrades for the existing 600,000 sq.ft. of University housing.

Westminster College
New Wilmington, Pennsylvania
Fire protection designer for the fire alarm system upgrade for nine residence halls totaling approximately 300,000 sq.ft.

LaRoche College
Pittsburgh, Pennsylvania
Fire protection designer for the expansion of Bold Hall dormitories and the College Center

Education

Bachelor of Science Degree, Fire and Safety Engineering, 1999, Eastern Kentucky University
Associate of Arts Degree, Fire Science Technology, 1997, Harrisburg Area Community College

Experience

H.F. Lenz Company June 1999 - present
Paxtonia Fire Company incident preplanning committee August 1995 - August 1997

Professional Registration / Certification

NICET Level II in Fire Protection Engineering Technology / Automatic Sprinkler System Layout



Mr. Mickle is responsible for the design of complete electrical systems for facilities. Mr. Mickle's key responsibilities include: coordination of building electrical, telephone and cable television services with respective utility companies; lighting design; power system design; fire alarm system design; sound system design; clock system design; stage lighting design; nurse call system design; emergency power system and lighting system design; electrical connection of HVAC, plumbing, and other miscellaneous equipment; writing of specifications; design of 5 KV and 12 KV underground electrical distribution systems; design of electrical systems for health care facilities; design of roadway lighting systems; design of electrical systems for military facilities; checking of plans and specifications for quality control; project management, building study and evaluation. His project experience includes (*indicates previous experience):

Forest County State Correctional Institution
Marienville, Pennsylvania
New 700,000 sq.ft. minimum, medium, and maximum security facility to house 2,000 inmates that consists of 19 buildings on a 76 acre site; includes facility administration and security administration buildings

Pine Grove and Coal Township State
Correctional Institutions
Pennsylvania
Bridging documents for new 128 cell additions to each L-3 facility

Cambridge Springs State Correctional
Institution
Pennsylvania
Bridging documents for new 128 cell addition to an L-3 facility

Forest County State Correctional Institution
Marienville, Pennsylvania
Bridging documents for new 96 cell addition to an L-5 facility

Fayette State Correctional Institution
Labelle, Pennsylvania
Replacement of the high temperature hot water heating lines

Pine Grove State Correctional Institute*
Indiana, Pennsylvania
Design of the facility's campus medium voltage electrical distribution system. Project included two 2.0 MW emergency generators, medium voltage paralleling switchgear, and SCADA (Supervisory Control And Data Acquisition) system

Smithfield State Correctional Institute*
Smithfield Twp, Huntingdon, Pennsylvania
Replacement of the facility's existing 1.0 MW, 4.16 kV emergency generator that served the prison campus with a new 1.5 MW, 4.16 kV emergency generator. Temporary emergency service was maintained to the facility throughout the project. Project also included the upgrade of the facilities 5 kV primary service entrance switchgear

Greensburg State Correction Institute*
Greensburg, Pennsylvania
Campus electrical upgrade project

Huntingdon State Correctional Institute*
Huntingdon, Pennsylvania
Various renovation projects

Somerset State Correctional Institute*
Somerset, Pennsylvania
Sewage treatment project

Education

Bachelor of Science, Electrical Engineering, 1987, University of Pittsburgh at Johnstown

Experience

H.F. Lenz Company 2001 - Present
The EADS Group, Inc. 1991 - 2001
Brinjac Kanbic & Associates 1988 - 1991

Professional Registration / Certification

Licensed Professional Engineer in Pennsylvania

Professional Achievements and Affiliations

Institute of Electrical and Electronics Engineers (IEEE)