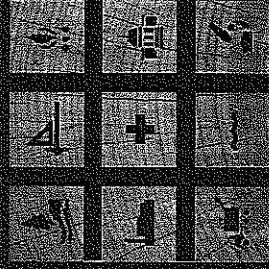


blackwood associates, inc.
architects & planners

m ses consultants, inc.
engineers & environmental



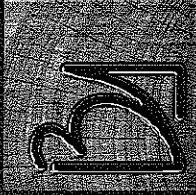
Architectural/Engineering Services

For

Department of Health & Human Resources

Jackie Withrow Hospital
Capitol Improvements
Beckley, West Virginia

Expression of Interest
RFQ: HHR10103



blackwood associates, inc.
architects & planners
mSES consultants, inc.
engineers & environmental

June 9, 2010

Ms. Roberta Wagner – File 22
Department of Administration
Purchasing Division
2019 Washington Street East - Building 15
Charleston, WV 25305-0130

Re: Architectural/Engineering Services for RFQ: HHR10103
Department of Health & Human Resources
Jackie Withrow Hospital Capital Improvements

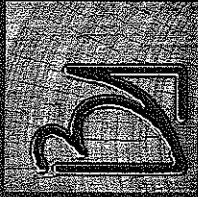
Dear Ms. Wagner:

Blackwood Associates, Inc. (BAI) and **MSES Consultants, Inc. (MSES)** are pleased to submit this expression of interest in providing professional services for the capital improvements to Jackie Withrow Hospital located in Beckley, West Virginia.

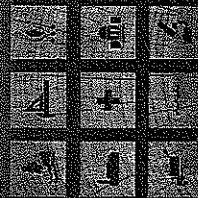
Blackwood Associates, Inc. is an Architectural and Planning firm located in Fairmont, WV and would provide all project planning and design. **MSES Consultants, Inc.** is an Engineering firm located in Clarksburg and Huntington, West Virginia, providing all engineering disciplines. The two firms have merged operations to become the largest full service architectural/engineering provider in West Virginia.

The **BAI/MSES** firm offers a combined professional staff of over 80 people, with registered architects, engineers, LEED accredited professionals, scientists, technicians and support personnel. **BAI/MSES** is a single source that can provide the professional disciplines required for projects of this nature. Professional services will be managed and performed by full-time, in-house personnel out of the Fairmont, Clarksburg and Huntington offices.

The **BAI/MSES** firm practice is based upon the philosophy of comprehensive service, providing our clients with a single point of responsibility. We believe that the building sciences of architecture and engineering cannot be separated. By bringing architecture, interior design, engineering, environmental, and management services together in a single firm, we ensure efficient and effective service. Another advantage to an Owner is **BAI/MSES's** extensive experience in site selection and evaluation of existing buildings, especially where environmental issues may be a potential concern.



blackwood associates, inc.
architects & planners
m ses consultants, inc.
engineers & environmental



BAI/MSES is your provider of the total array of professional services including LEED, environmental and hygienist services where needed. Another advantage to our firm, **BAI/MSES** develops websites for every project as a part of basic services. Websites are used during various phases of project development, making Owner document review much more efficient. This technology has also been proven to increase the interest of contractors and suppliers during bidding. During construction we add site progress photographs and panoramas for Owner access and review from their offices.

BAI and **MSES** are West Virginia firms with a combined 81 years of providing architecture and engineering services to agencies throughout West Virginia. Our 18 years of successful practice as a team is the direct result of our ability to provide all professional disciplines necessary for any governmental project.

We can assure a work force of sufficient size to provide immediate and comprehensive involvement on this project. We look forward to having the opportunity to present our qualifications and approach on a personal basis. Thank you for your consideration.

Sincerely,

BLACKWOOD ASSOCIATES, INC.
ARCHITECTS AND PLANNERS

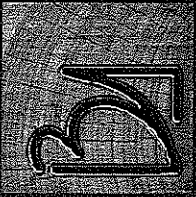
JAMES K. BLACKWOOD, AIA
PRINCIPAL

Blackwood Associates, Inc.

Architects and Planners
611 East Park Avenue
Fairmont, WV 26554
304-366-1580 304-366-1537 fax
jim@wvarchitects.com
<http://www.wvarchitects.com>

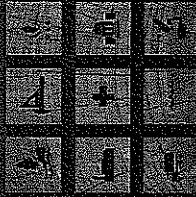
MSES Consultants, Inc.

Engineers and Environmental
609 West Main Street
Clarksburg, WV 26302
304-624-9700 304-622-0981 fax
<http://www.msesinc.com>



blackwood associates, inc.
architects & planners

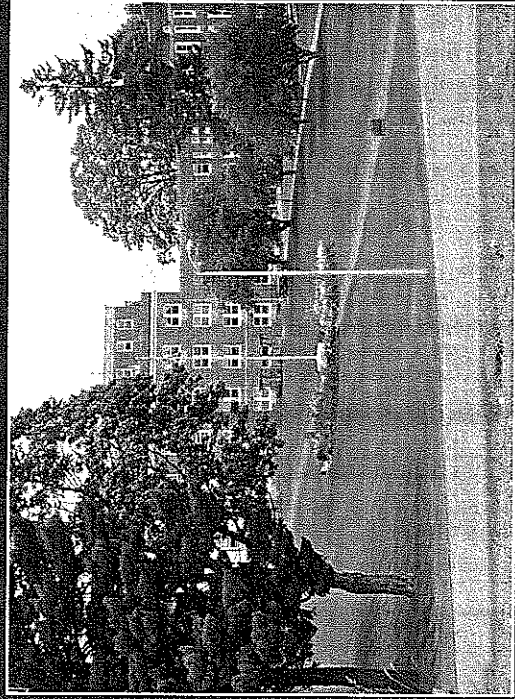
mSES consultants, inc.
engineers & environmental



About the Firm

The **Blackwood Associates, Inc. (BAI)** and **MSES Consultants, Inc. (MSES)** mission is to provide full professional service necessary to assure successful completion of a project. Our practice is based upon the philosophy of comprehensive service, providing our clients with a single point of responsibility. By bringing architecture, interior design and engineering together into a single firm, we ensure efficient and effective service.

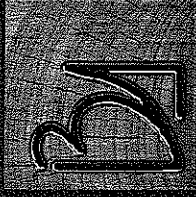
The firm maintains a staff of highly trained and experienced personnel, including all of the technical disciplines necessary for the Capital Improvements projects. Our personnel demonstrate the education and experience required for this project. We can accommodate any timetable for programming through completion of construction documents and our combined force of specialized professionals would allow **BAI/MSES** to begin a full range of services immediately for this project. **BAI/MSES** have extensive experience in the design of government and medical facilities of every type.



Jackie Withrow Hospital (formerly Pinecrest Hospital)
Beckley, WV

Blackwood Associates, Inc.

Blackwood Associates, Inc. was originally established as a West Virginia Corporation in 1959. The firm was incorporated as L.D. Schmidt & Son, Architects and Engineers, under the direction of the late Louis D. Schmidt. In 1967, James Blackwood joined the firm as an intern architect and project designer. In 1972, James Blackwood became vice-president of L.D. Schmidt & Son and then assumed the presidency of the Corporation in 1975. In 1981, the Corporate name was changed to Blackwood Associates, Inc. Architects and Planners, to reflect the practice ownership.



blackwood associates, inc.
architects & planners
mases consultants, inc.
engineers & environmental

Blackwood Associates, Inc.

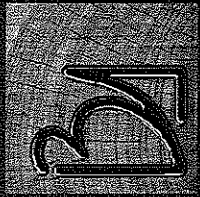
Since that time, the firm has maintained leadership in the design of state-of-the-art governmental, educational, medical, residential, recreational, commercial and historical adaptive reuse facilities. **BAI** has successfully completed over 600 projects with a construction value in excess of \$600 million in the last 20 years.

BAI/MSES is familiar with all aspects of new construction: renovation, build-out design, life safety codes, BOCA codes, and Federal and State codes and ordinances applicable for the proposed project. In addition, we maintain LEED accredited professionals in multiple disciplines to meet quality and performance standards. The benefits of this experience and diligence are perhaps most effectively demonstrated by our large number of long term clients and continued successful practice in West Virginia.

BAI/MSES maintains an in-house staff of professionals whose expertise covers all aspects of architecture, planning and engineering practice. We recognize the importance of computers for complete and efficient project organization, communication and document management. All word processing, design, drafting, building analysis, virtual reality, and websites are developed by the firm using cutting edge technology. This same technology allows **BAI/MSES** to provide an Owner with project work product in a usable format at project completion.

We strongly adhere to the American Institute of Architects Code of Professional Conduct. We serve our clients competently and in a professional manner, and exercise unprejudicial and unbiased judgment on their behalf.

BAI/MSES have never had a project go uncompleted as a result of inadequate staffing, inability to meet Owner requirements or failure to meet established time frames. This commitment of professionalism applies to every project and client.



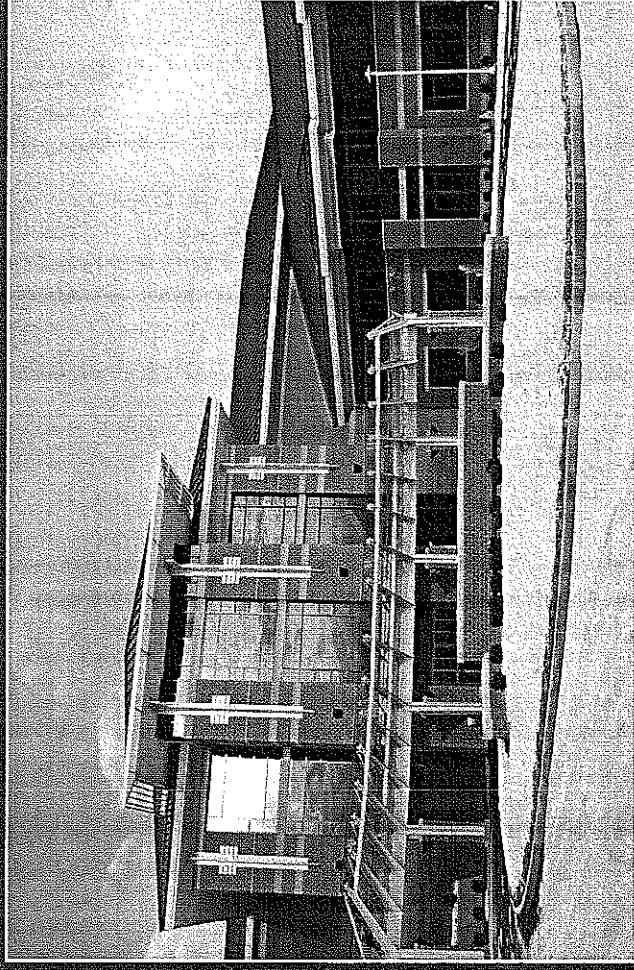
blackwood associates, inc.
architects & planners

mSES consultants, inc.
engineers & environmental

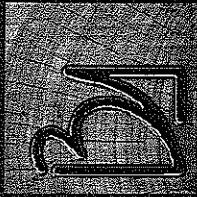
MSES Consultants, Inc.

MSES Consultants, Inc. is a multi-disciplinary engineering, architectural support, environmental, planning, and project management firm, headquartered in Clarksburg, West Virginia. We have amassed 33 years of successful project experience, serving private and public clients since our initial founding as a small, 3-person environmental consulting firm in 1976. MSES expanded rapidly to become a provider of total engineering and environmental services by the year 1978, and we have seen our ranks swell, with a current professional staff of 70, including 12 registered engineers, 2 Certified Industrial Hygienists, 4 asbestos inspectors, 4 asbestos air clearance monitors, 1 lead based paint risk assessor, 6 professional land surveyors, and a diverse roster of professionals, scientists, and support personnel.

MSES personnel have completed more than 10,000 assignments to date. We have been heavily focused on building construction, renovations, and project management since our founding in 1976. Many of our projects have involved site selection studies, designs (HVAC, plumbing, electrical, civil, structural, mechanical, lighting, fire systems, security, and telecommunications), inspections, geotechnical investigations, assessments and reviews, environmental sampling and analysis, property evaluations and appraisals, and project management services throughout West Virginia and surrounding states. MSES also has the ability to address environmental issues that may occur during construction.



WV Veterans 120 Bed Nursing Facility
Clarksburg, WV



blackwood associates, inc.
architects & planners

m ses consultants, inc.
engineers & environmental

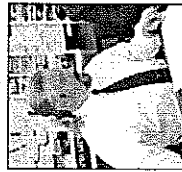
LEED Accredited Professionals

BAI/MSES is proud to be a member of the United States Green Building Council and for many years has incorporated a broadening spectrum of sustainable design strategies as part of our standard operations. Green building practices can greatly reduce the negative environmental impact of the construction process, and green design can provide more "livable" buildings with healthier, more productive environments and lower building maintenance and operating costs. Achieving a LEED certification for a structure is an involved process that requires professional assistance, and proper planning is essential from the very beginning of a project. With two LEED Accredited Professionals on staff consideration of the Leadership in Energy and Environmental Design philosophy is integral to our design and planning process. Our LEED APs are experienced in architectural and mechanical design and construction and are proponents of incorporating the green design philosophy into real world building projects.

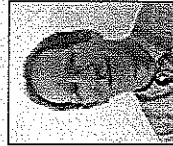


THINK GREEN

BAI/MSES LEED Capabilities

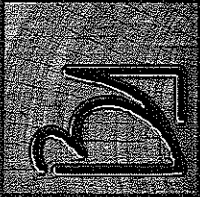


Project Design & Planning
Kenton Blackwood, LEED^{AP}, Associate AIA



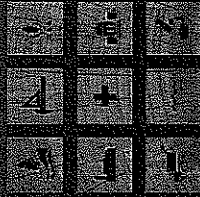
Mechanical Engineering/HVAC
Dave Skeen, PE, LEED^{AP}

Blackwood Associates, Inc./MSES Consultants, Inc.
The Largest Full Service Professional Architectural/Engineering Firm in West Virginia



blackwood associates, inc.
architects & planners

mSES consultants, inc.
engineers & environmental

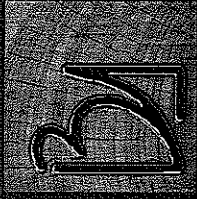


Professional Education

BAI/MSES employ a professional staff of full-time professionals with experience in numerous disciplines.

BAI/MSES professionals are supported by the latest computers and computer software, electronic and satellite survey, computer-aided drafting and design, in field data collectors, and our in-house graphic, web development and reproduction center.

Category	Number of Employees	Education		
		Associate Degrees	Bachelor Degrees	Advanced Degrees
Administrative	6	2	3	-
Architect	2	-	2	-
Architect-In-Training	2	-	2	-
Chemical Engineer	1	-	1	1
Chemist	1	-	1	-
Civil Engineer	3	-	3	-
Resident Construction Engineer	2	1	1	-
CAD/Design Draftsman	2	-	2	-
CAD/Drafter	5	3	1	-
Environmental Geographer (Gis)	1	-	1	-
Ecologist	1	-	1	1
Meteorologist	1	-	1	-
Electrical Engineer	3	-	3	-
Geologist	1	-	1	-
Hydrologist	1	-	1	1
Landscape Architect	1	-	1	-
Environmental Engineer	2	-	2	1
Mechanical Engineer	2	-	2	-
Mining Engineer	2	-	2	1
Industrial Engineer	1	-	1	-
Sanitary Engineer	2	-	2	-
Soil Engineer	2	-	2	-
Transportation Engineer	1	-	1	-
Certified Industrial Hygienist	2	-	2	-
Certified Safety Professionals	2	-	2	-
Safety Engineer	1	-	1	1
Land and Right-Of-Way Agents	3	-	3	-
Paralegal	2	-	2	-
Surveyors	6	4	2	-
Economist	1	-	1	1
Biologist	2	-	2	2
Botanist	1	-	1	1
Engineering Technicians	4	3	1	-
Survey Support	11	4	1	-
Certified Web Designer	1	-	1	-

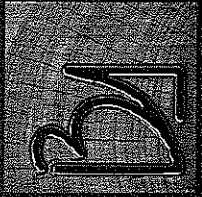


blackwood associates, inc.
architects & planners
m ses consultants, inc.
engineers & environmental

Disciplines

- Architectural
- Civil Engineering
- Structural Engineering
- Electrical Engineering
- Mechanical Engineering
- Chemical Engineering
- Urban/Regional Planning
- Mining Engineering
- Landscape Architecture
- Geologists
- Sanitary Engineering
- LEED Professionals

- Soils Engineering
- Surveyors
- Transportation Engineering
- NACE Corrosion Engineering
- Environmental Science Engineering
- Hydrologists
- Ecologists
- Economists
- Construction Inspectors
- CAD Technicians
- Certified Safety Professionals
- Virtual Reality & Web Designers



blackwood associates, inc.
architects & planners
mases consultants, inc.
engineers & environmental

References

*William R. Sharpe, Jr. Hospital
Planning of Multiple Projects*
Contact: Mr. Kevin Stalnaker
1-304-269-1210 ext. 280 or kevin.p.stalnaker@wv.gov

*Marion County Board of Education
Planning of Multiple Projects*
Contact: Mr. Tom Deadrick, Superintendent
1-304-367-2107 or tdadrack@access.k12.wv.us

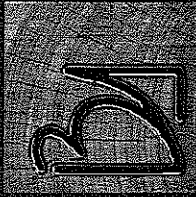
*WV Division of Veterans Affairs
West Virginia State Veterans Cemetery, Institute, WV*
Contact: Mr. Keith Gwinn, Director
1321 Plaza East - Suite 109 - Charleston, WV
1-304-558-3661 or wvvetaff@aol.com

*State of West Virginia
Division of Veterans Affairs
West Virginia Veterans Nursing Facility, Clarksburg, WV (VA)*
Contact: Mr. Kevin Crickard, Director
1-304-626-1600 or kevin.b.crickard@wv.gov

*Harrison County Parks and Recreation
Harrison County 4-H Facility*
Contact: Mr. Mike Book, Director
1-304-624-8619 or scolli@access.k12.wv.us

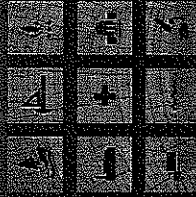
*Mineral County Board of Education
Planning of Multiple Projects*
Contact: Mr. Skip Hackworth, Superintendent
1-304-788-4200 or hackwor@access.k12.wv.us

*Human Resource Development Foundation, Inc.
Planning of Multiple Projects including major renovations*
Contact: Mr. Kenny Purdue, President - WV AFL-CIO
1-304-344-3557 or kpurdue@wvaficb.org



blackwood associates, inc.
architects & planners

m ses consultants, inc.
engineers & environmental



Key Personnel

All of the following key professional staff members will be assigned to work on the project. Their specific percentage of time devoted to the contract will vary according to specific project needs.

ARCHITECTURAL

Administrative • Architectural Design

- James K. Blackwood, AIA, NCARB – Project Principal
 - Pamela J. Wean, AIA – Project Architect
- Architectural Team • Code Compliance • LEED
- Kenton Q. Blackwood, LEEDAP, Assoc. AIA – Vice President
 - Stacey L. Bower, Assoc. AIA – Designer

ENGINEERING

Administrative

- Lawrence M. Rine – Principal and Quality Assurance
- Jeffrey T. Wise – Managing Director

Environmental

- John J. Keeling, PE, WV, CIH, CSP, QEP

Civil • Site Engineering

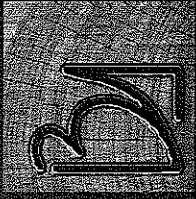
- Rod D. Kidd, BSCE

Mechanical Engineering • HVAC

- David L. Skeen, PE, LEEDAP

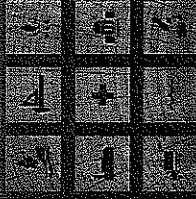
Electrical Engineering

- Jeffrey K. Pauley, PE, PS



blackwood associates, inc.
architects & planners

m ses consultants, inc.
engineers & environmental



DHHR Project

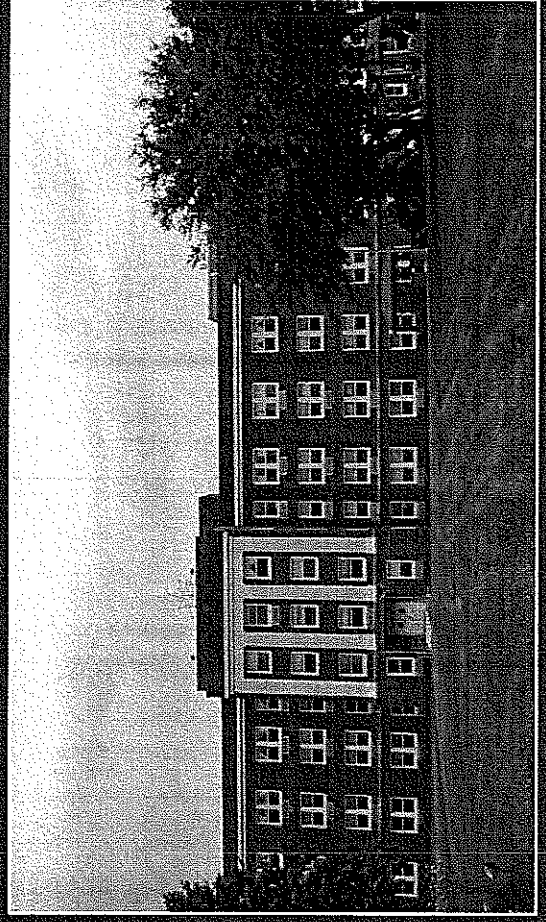
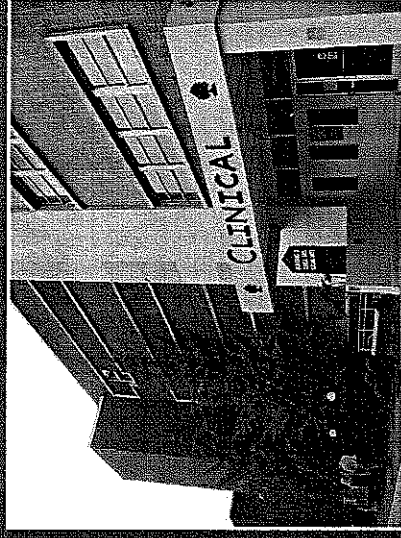
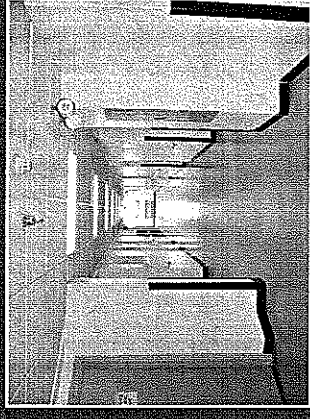
Department of Health and Human Resources Three Year Agreement for A/E Services

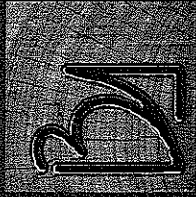
Blackwood Associates, Inc./ MSES Consultants, Inc. is working with the State of West Virginia Department of Health and Human Resources to provide architectural/ engineering services for seven hospital facilities throughout West Virginia. Project basic services are determined after facility assessments.

Some projects require review by the State Fire Marshal, OHFLAC and WVHCA.

TYPICAL PROJECTS INCLUDE:

- Construction of a 5 Bed TB Unit at **Pinecrest Hospital** in Beckley (completed)
- Major Exterior Upgrades at **Hopemont Hospital** in Preston County (completed)
- Chiller Replacement at Mildred Mitchell-Bateman Hospital in Huntington (completed)
- Fire Alarm and Nurse Call Replacement at **Pinecrest Hospital** (completed)
- Water Tank investigation at William R. Sharpe Hospital in Weston (completed)



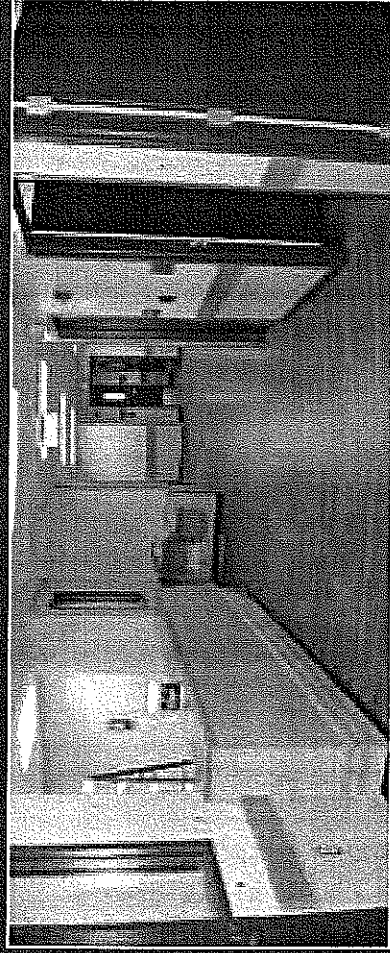


blackwood associates, inc.
architects & planners

mSES consultants, inc.
engineers & environmental

Renovations to Mildred Mitchell-Bateman Hospital Huntington, WV

Blackwood Associates, Inc./MSES Consultants, Inc. was selected by the State of West Virginia Department of Health and Human Resources to provide architectural/ engineering services for Renovations to the Mildred Mitchell-Bateman Hospital in Huntington, West Virginia. BAI assisted the Hospital in preparation of a Certificate of Need in accordance with State of West Virginia Health Care Authority requirements.



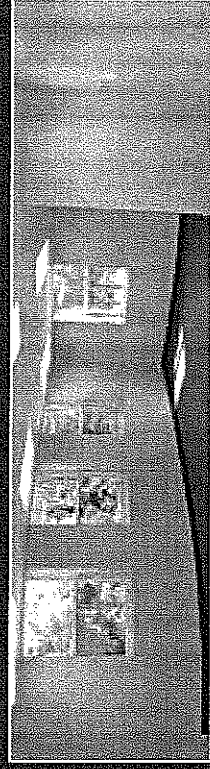
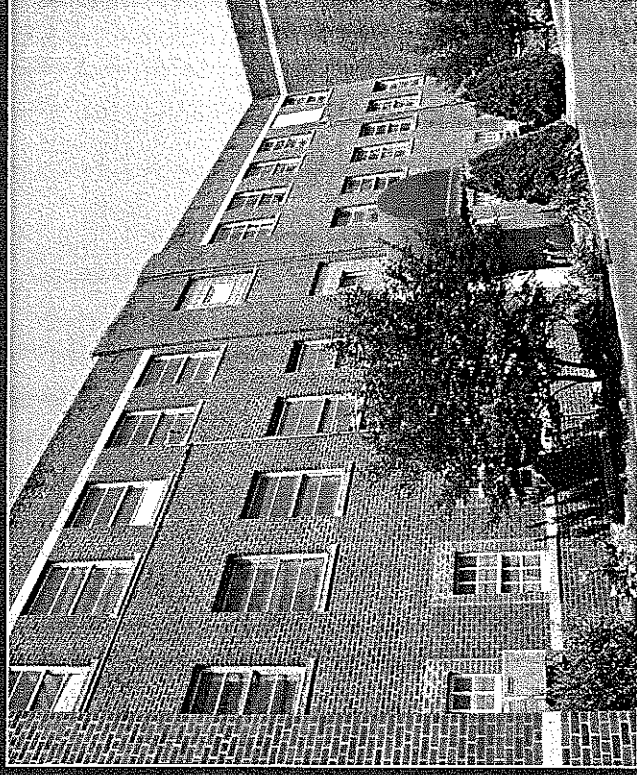
WORK WILL INCLUDE:

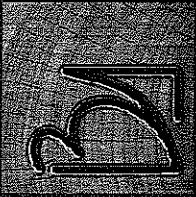
Renovations for a new 35 Bed Patient Unit to Building 2 cost \$4,579,500.00. This new unit is being constructed in existing space that was previously gutted.

Work includes renovation of approx. 20,000 sq. ft., window replacement, elevator replacement, & health/safety upgrades.

Office of Health Facility Licensure and Certification review and approval was required.

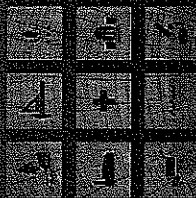
DHHR Project





blackwood associates, inc.
architects & planners

m ses consultants, inc.
engineers & environmental

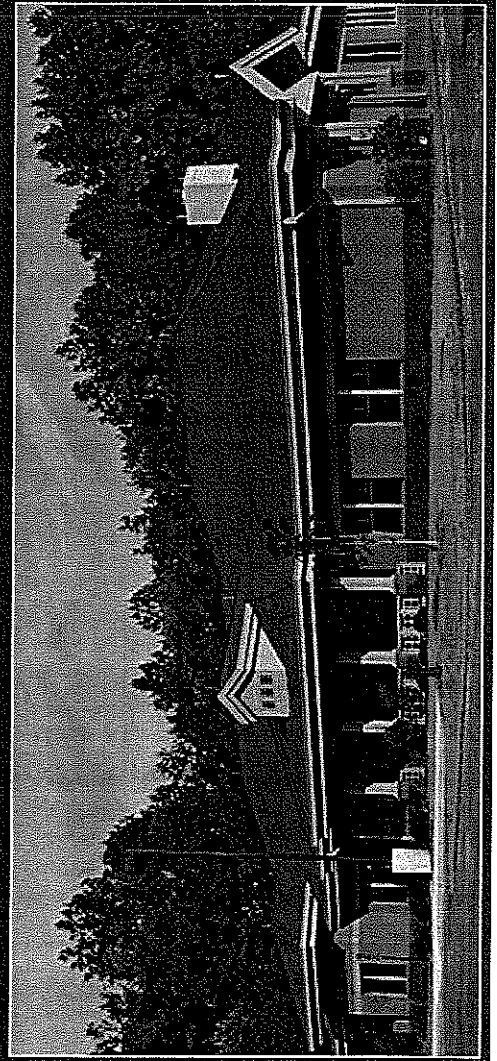
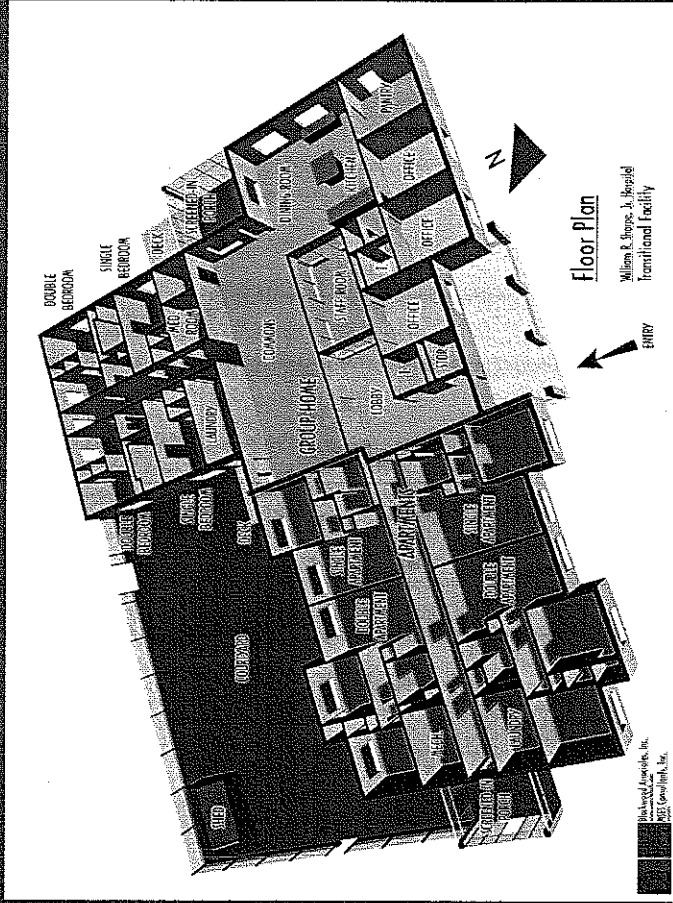


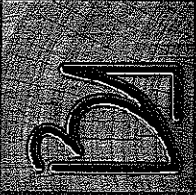
DHHR Project

**William R. Sharpe, Jr. Hospital
Transitional Facility**
Weston, West Virginia

Blackwood Associates, Inc./MSES Consultants, Inc. were selected by the State of West Virginia Department of Health and Human Resources to provide architectural/engineering services for the new William R. Sharpe, Jr. Hospital Transitional Facility. The step-down unit is on the Sharpe Hospital campus and provides a facility where residents can transition to return to a normal life.

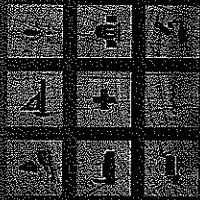
The project consisted of construction of a 7,850 sq. ft. single-story structure located away from the main Hospital. The project included two single-story accessory storage structures. DHHR Office of Health Facility Licensure and Certification oversight was required.





blackwood associates, inc.
architects & planners

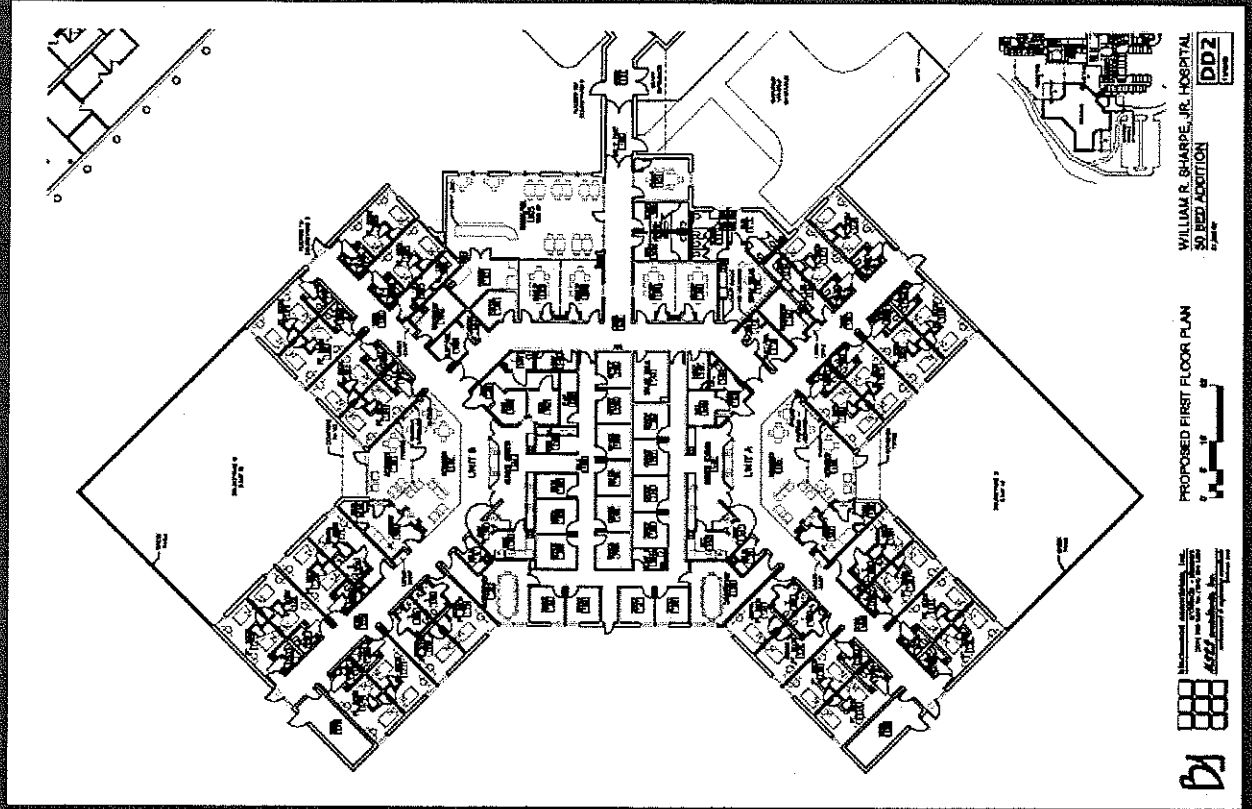
mSES consultants, inc.
engineers & environmental



DHHR Project

William R. Sharpe, Jr. Hospital
New 50 Bed Patient Unit
Weston, West Virginia

Blackwood Associates, Inc./MSES Consultants, Inc. were selected by the State of West Virginia Department of Health and Human Resources to provide architectural/engineering services for the new 50 Bed Forensic Patient Unit at William R. Sharpe, Jr. Hospital in Weston, WV. The Facility has been designed with separate pods and outdoor spaces to allow the Owner complete flexibility. The on-grade addition will provide a secure entrance for receiving adjudicated patients. The ± 25,000 SF project has been designed and is ready for development of construction documents.



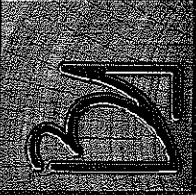
Blackwood Associates, Inc.
Architects & Planners
1000 17th Street, N.W.
Washington, D.C. 20036
202-462-1000

MSES Consultants, Inc.
Engineers & Environmental
1000 17th Street, N.W.
Washington, D.C. 20036
202-462-1000

PROPOSED FIRST FLOOR PLAN

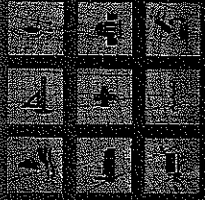
WILLIAM R. SHARPE, JR. HOSPITAL
50 BED ADDITION

DD2



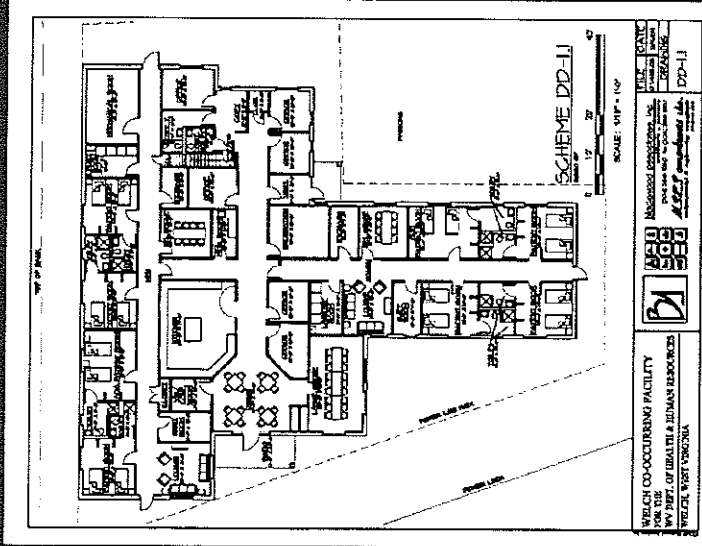
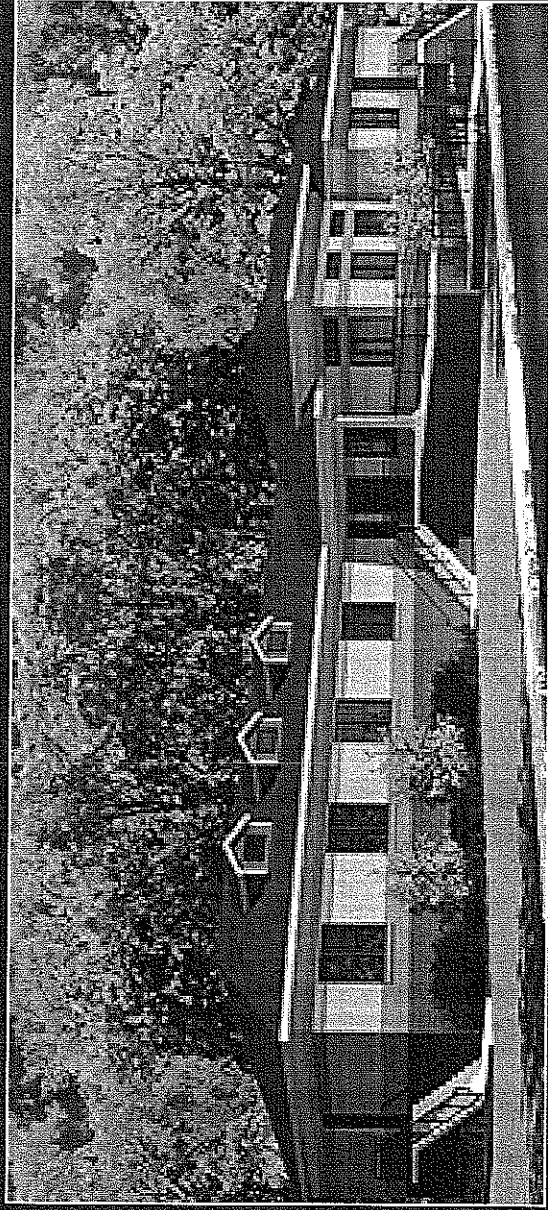
blackwood associates, inc.
 architects & planners

mSES consultants, inc.
 engineers & environmental



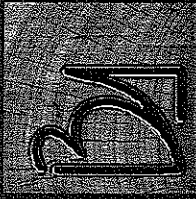
DHHR Project

New Co-Occurring Facility at Jackie Withrow Hospital Beckley, West Virginia



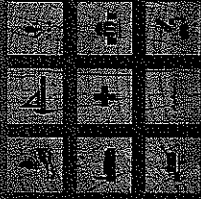
Blackwood Associates, Inc./MSES Consultants, Inc. were selected by the State of West Virginia Department of Health and Human Resources to provide architectural/engineering services for the new Co-Occurring Facility at Jackie Withrow Hospital to be located in Beckley, WV.

Work includes site preparation and construction of a 8,300 SF 16-bed group home with slab on grade, wood stud and brick walls and wood truss roof. The project is scheduled to bid in mid 2010.



blackwood associates, inc.
architects & planners

m ses consultants, inc.
engineers & environmental



Additional Experience

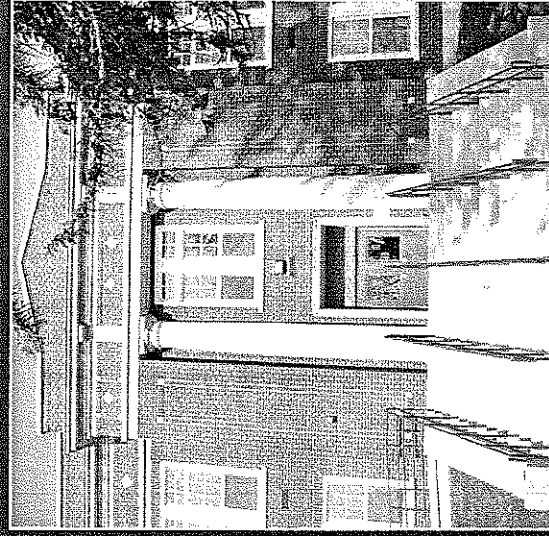
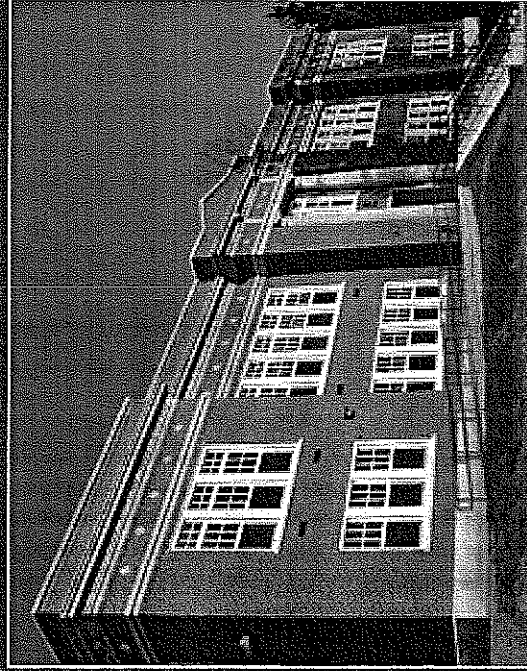
Johnston School Renovations
Industrial, West Virginia
State of West Virginia

Blackwood Associates, Inc./MSES Consultants, Inc. were selected by the WV Division of Juvenile Services to evaluate and develop construction documents for renovations to an old school building located on the grounds of the WV Industrial Home for Youth in Industrial, WV. The purpose of the study was to determine the feasibility of renovating the structure to again serve as an educational facility.

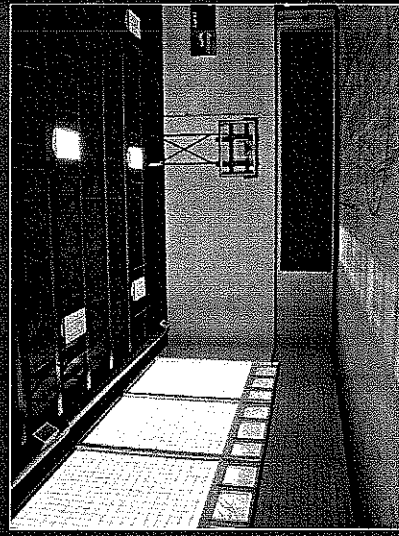
The final BAI/MSES report and cost estimates led to a recommendation to renovate the present building in lieu of constructing a new facility.

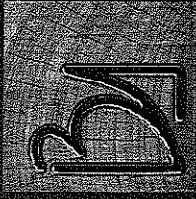
BAI/MSES completed construction documents, bidding and the \$2,568,000 project started construction in April 2006. Construction is complete and the building is now occupied by the educational staff.

The project included HVAC replacement and energy upgrades.



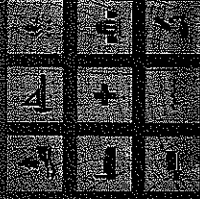
WV Division of Juvenile Services
Contact: Joe Merendino, Superintendent
1-304-782-2371





blackwood associates, inc.
architects & planners

mSES consultants, inc.
engineers & environmental



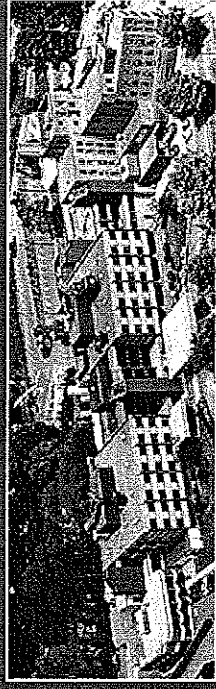
Additional Experience

Additional Medical Projects

BAI and MSES as separate firms have been involved on numerous health care and similar institutional projects. For BAI these services included planning, design and construction administration. MSES has provided Mechanical/Electrical/Plumbing, Civil, Survey and Environmental services.

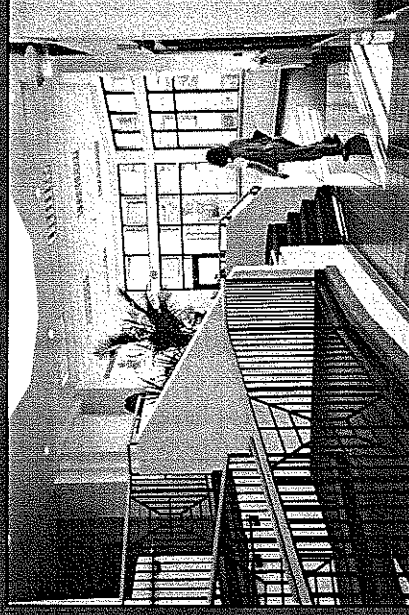
Additional Health Care Facilities completed by BAI include:

- Braxton County Memorial Hospital
- Roane General Hospital
- Fairmont General Hospital
- Grafton City Hospital



New Construction:

- WV Veterans Nursing Facility
- Western District Mental Health Center
- Regional VII Public Health Center
- Colin Anderson Center
- Regional IX Public Health Center
- Potomac Comprehensive Diagnostic & Guidance Center
- Hancock-Brooke Mental Health Services Facility
- Westchester Medical Complex
- National Institute of Occupational Safety and Health
- Hampshire County Health Department

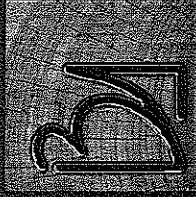


Renovations/Conversions:

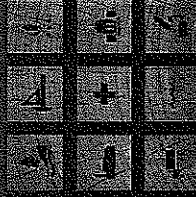
- Barbourville Veterans Home
- Fairmont General Hospital
- Broadus Hospital
- Greenbrier Valley Hospital
- Fairmont Emergency Hospital
- Clarksburg V.A. Medical Center

Furnishings/Equipment:

- Braxton County Hospital
- Stonewall Jackson Memorial Hospital
- Regional IX Public Health Center



blackwood associates, inc.
architects & planners
mSES consultants, inc.
engineers & environmental

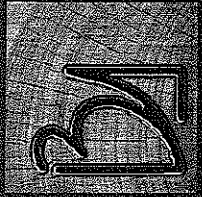


Value Added Services Environmental

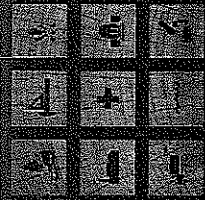
MSES Consultants, Inc. (MSES) was originally founded in 1976 as an Environmental Consulting Company. Over the years, MSES expanded its Environmental Services, as well as adding Civil, Electrical, Mechanical and Safety Engineering Services with Drafting and Survey provided to supplement the various Engineering expertise.

MSES' environmental capabilities are listed below:

- Environmental Permitting (Air, Wastewater, and Stormwater Discharges); Environmental Plan Preparation
Groundwater Protection, Stormwater Pollution Prevention, Facility Response Plans, Waste Management Plans, etc.)
- Environmental Inspections/Audits
- ISO 14001 Registration Assistance
- Environmental Regulation Compliance/Interpretation (Local, West Virginia and Federal)
- Indoor Air Quality Studies (Ventilation, Air Contaminants, Identification and Quantification, Microorganism Assessments)
- Asbestos (Inspections, Management Plans, Abatement Specifications, Abatement Monitoring, Clearance Air Monitoring)
- Lead Based Paint (Inspections, Abatement Specifications, Abatement Monitoring, Clearance Air Monitoring)
- Landfill (Design, Construction Specifications, Construction Monitoring)
- Contaminated Soil/Groundwater (Assessment, Clean-up Specifications, Clean-up Monitoring, Clearance Sampling, Voluntary Remediation Plan Preparation/Implementation)
- ASTM Phase I, II, and III (Environmental Site Assessments);
- Water System Design;
- Wastewater System Design



blackwood associates, inc.
architects & planners
mSES consultants, inc.
engineers & environmental



**Value Added Services
Environmental**

The MSES Staff includes the following environmental specialists:

- Civil Engineers;
- Environmental Chemists;
- Biologists;
- Meteorologist; and
- Industrial Hygienist.

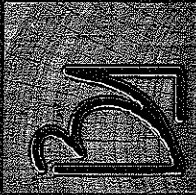
MSES personnel maintain a wide variety of professional licenses/certifications. A list of licenses/certification maintained by one or more of the MSES staff is listed below:

- Registered Professional Engineer (PE);
- Certified Industrial Hygienist (CIH);
- Qualified Environmental Professional (QEP);
- Licensed Remediation Specialist (LRS);
- Licensed Asbestos Inspector;
- Licensed Asbestos Management Planner;
- Licensed Asbestos Clearance Air Monitor;
- Licensed Lead Inspector;
- Licensed Groundwater Monitoring Well Installer; and
- Licensed Underground Storage Tank Closure Specialist.

APPROACH TO ENVIRONMENTAL SURVEYS

MSES typically utilizes the following approach to environmental survey:

- Project Initiation in which Project Objectives are Defined;
- Field Work Performed;
- Analysis of Samples (if required);
- Review of Information (Data Obtained and Identification of Regulatory/Best Management Practices);
- Report Preparation; and
- Review of Findings with Client.



blackwood associates, inc.
architects & planners

mSES consultants, inc.
engineers & environmental

**Value Added Services
Design & Construction Websites**

Blackwood Associates, Inc. features its own Web Design Division. BAI has been developing project design websites for over 12 years and this has significantly improved project communication. During design development, our websites are used to feature project updates, renderings and floor plans for review, as well as preconstruction site photography and site plans. Construction website information is updated during the building process on a regular basis.

**Project Design Websites
are used for:**

- Conceptual Designs
- Design Document Reviews
- Site Panoramas
- Floor plan & Rendering Analysis

- Project Construction
Websites are used for:**
- Progress Reports
 - Progress Photos & Panoramas
 - Construction Record

William R. Sharpe, Jr.
Hospital
**50 Bed Patient
Care Unit**
Weston, WV

Project Updates
Home
Site Photos & Panoramas
Download Review Drawings
Scheme 8.1
Scheme 8.2
Download Documents
Program Requirements Form
Meeting #2 Notes - 4/13/09
Meeting #4 Notes - 3/23/09
AIA Guidelines for Design & Construction of Health Care Facilities
Administrative
Blackwood Assoc. Website
MSES Consultants Website

DOWNLOAD DRAWINGS
September 6, 2009

Scheme 8.1

DOWNLOAD DRAWINGS
August 24, 2009

Scheme 8.2

DOWNLOAD DRAWINGS
August 24, 2009

Scheme 6.1

WV Veterans
120 Bed
Nursing Facility
Clarksburg, WV

Project Site Panoramas

January 3, 2007

STATE OF WEST VIRGINIA
Purchasing Division

PURCHASING AFFIDAVIT

West Virginia Code §5A-3-10a states: No contract or renewal of any contract may be awarded by the state or any of its political subdivisions to any vendor or prospective vendor when the vendor or prospective vendor or a related party to the vendor or prospective vendor is a debtor and the debt owed is an amount greater than one thousand dollars in the aggregate.

DEFINITIONS:

"Debt" means any assessment, premium, penalty, fine, tax or other amount of money owed to the state or any of its political subdivisions because of a judgment, fine, permit violation, license assessment, defaulted workers' compensation premium, penalty or other assessment presently delinquent or due and required to be paid to the state or any of its political subdivisions, including any interest or additional penalties accrued thereon.

"Debtor" means any individual, corporation, partnership, association, limited liability company or any other form or business association owing a debt to the state or any of its political subdivisions. "Political subdivision" means any county commission; municipality; county board of education; any instrumentality established by a county or municipality; any separate corporation or instrumentality established by one or more counties or municipalities, as permitted by law; or any public body charged by law with the performance of a government function or whose jurisdiction is coextensive with one or more counties or municipalities. "Related party" means a party, whether an individual, corporation, partnership, association, limited liability company or any other form or business association or other entity whatsoever, related to any vendor by blood, marriage, ownership or contract through which the party has a relationship of ownership or other interest with the vendor so that the party will actually or by effect receive or control a portion of the benefit, profit or other consideration from performance of a vendor contract with the party receiving an amount that meets or exceed five percent of the total contract amount.

EXCEPTION: The prohibition of this section does not apply where a vendor has contested any tax administered pursuant to chapter eleven of this code, workers' compensation premium, permit fee or environmental fee or assessment and the matter has not become final or where the vendor has entered into a payment plan or agreement and the vendor is not in default of any of the provisions of such plan or agreement.

Under penalty of law for false swearing (*West Virginia Code* §61-5-3), it is hereby certified that the vendor affirms and acknowledges the information in this affidavit and is in compliance with the requirements as stated.

WITNESS THE FOLLOWING SIGNATURE

Vendor's Name: Blackwood Associates, Inc.

Authorized Signature: [Signature] Date: 6/10/10

State of WEST VIRGINIA

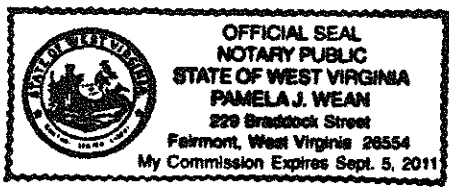
County of MARION, to-wit:

Taken, subscribed, and sworn to before me this 10 day of JUNE, 2010.

My Commission expires SEPT. 5, 2011, 2011.

AFFIX SEAL HERE

NOTARY PUBLIC Pamela J. Wean





State of West Virginia
 Department of Administration
 Purchasing Division
 2019 Washington Street East
 Post Office Box 50130
 Charleston, WV 25305-0130

Request for Quotation

RFQ NUMBER
HHR10103

PAGE
1

ADDRESS CORRESPONDENCE TO ATTENTION OF
ROBERTA WAGNER 304-558-0067

VENDOR

*709040528 304-366-1580
 BLACKWOOD ASSOCIATES INC
 611 EAST PARK AVENUE
 FAIRMONT WV 26554

SHIP TO

HEALTH AND HUMAN RESOURCES
 OFFICE OF PROPERTY MANAGEMENT
 VARIOUS LOCALES AS INDICATED

DATE PRINTED	TERMS OF SALE	SHIP VIA	F.O.B	FREIGHT TERMS
05/26/2010				

BID OPENING DATE: 06/15/2010	BID OPENING TIME: 01:30PM
------------------------------	---------------------------

LINE	QUANTITY	UOP	CAT NO	ITEM NUMBER	UNIT PRICE	AMOUNT																		
<p>ADDENDUM NO. 1</p> <p>1. TO ADD AN ADDITIONAL LOCATION, HOPEMONT HOSPITAL, THIS EOI, AS AN ADD ALTERNATE, PENDING RECEIPT OF FUNDING APPROVAL FOR ARRA REVIEW COMMITTEE.</p> <p>2. ADDENDUM ACKNOWLEDGEMENT IS ATTACHED. THIS DOCUMENT SHOULD BE SIGNED AND RETURNED WITH YOUR BID. FAILURE TO SIGN AND RETURN MAY RESULT IN DISQUALIFICATION OF YOUR BID.</p> <p>EXHIBIT 10</p> <p>REQUISITION NO.: HHR10103</p> <p>ADDENDUM ACKNOWLEDGEMENT</p> <p>I HEREBY ACKNOWLEDGE RECEIPT OF THE FOLLOWING CHECKED ADDENDUM(S) AND HAVE MADE THE NECESSARY REVISIONS TO MY PROPOSAL, PLANS AND/OR SPECIFICATION, ETC.</p> <table border="0"> <tr> <td>ADDENDUM NO.</td> <td>S:</td> <td></td> </tr> <tr> <td>NO. 1</td> <td>X</td> <td>5/26/10</td> </tr> <tr> <td>NO. 2</td> <td>X</td> <td>6/3/10</td> </tr> <tr> <td>NO. 3</td> <td>X</td> <td>6/8/10</td> </tr> <tr> <td>NO. 4</td> <td></td> <td></td> </tr> <tr> <td>NO. 5</td> <td></td> <td></td> </tr> </table> <p>I UNDERSTAND THAT FAILURE TO CONFIRM THE RECEIPT OF TH</p>							ADDENDUM NO.	S:		NO. 1	X	5/26/10	NO. 2	X	6/3/10	NO. 3	X	6/8/10	NO. 4			NO. 5		
ADDENDUM NO.	S:																							
NO. 1	X	5/26/10																						
NO. 2	X	6/3/10																						
NO. 3	X	6/8/10																						
NO. 4																								
NO. 5																								

RECEIVED
 2010 JUN 14 P 12:27
 PURCHASING DIVISION
 STATE OF WV

SEE REVERSE SIDE FOR TERMS AND CONDITIONS		
SIGNATURE 	TELEPHONE 304 366-1580	DATE 6-10-2010
TITLE President	FEIN 55-0434407	ADDRESS CHANGES TO BE NOTED ABOVE

WHEN RESPONDING TO RFQ, INSERT NAME AND ADDRESS IN SPACE ABOVE LABELED 'VENDOR'



State of West Virginia
 Department of Administration
 Purchasing Division
 2019 Washington Street East
 Post Office Box 50130
 Charleston, WV 25305-0130

Request for Quotation

RFQ NUMBER
HHR10103

PAGE
2

ADDRESS CORRESPONDENCE TO ATTENTION OF
ROBERTA WAGNER 304-558-0067

*709040528 304-366-1580
 BLACKWOOD ASSOCIATES INC
 611 EAST PARK AVENUE
 FAIRMONT WV 26554

HEALTH AND HUMAN RESOURCES
 OFFICE OF PROPERTY MANAGEMENT
 VARIOUS LOCALES AS INDICATED

DATE PRINTED	TERMS OF SALE	SHIP VIA	F.O.B.	FREIGHT TERMS
05/26/2010				

BID OPENING DATE: 06/15/2010	BID OPENING TIME: 01:30PM
------------------------------	---------------------------

LINE	QUANTITY	UOP	CAT NO	ITEM NUMBER	UNIT PRICE	AMOUNT
------	----------	-----	--------	-------------	------------	--------

ADDENDUM(S) MAY BE CAUSE FOR REJECTION OF BIDS.
 VENDOR MUST CLEARLY UNDERSTAND THAT ANY VERBAL REPRESENTATION MADE OR ASSUMED TO BE MADE DURING ANY ORAL DISCUSSION HELD BETWEEN VENDOR'S REPRESENTATIVES AND ANY STATE PERSONNEL IS NOT BINDING. ONLY THE INFORMATION ISSUED IN WRITING AND ADDED TO THE SPECIFICATIONS BY AN OFFICIAL ADDENDUM IS BINDING.

[Handwritten Signature]
 SIGNATURE
[Handwritten Name]
 COMPANY
[Handwritten Date]
 DATE

NOTE: THIS ADDENDUM ACKNOWLEDGEMENT SHOULD BE SUBMITTED WITH THE BID.

REV. 09/21/2009

END OF ADDENDUM NO. 1

SIGNATURE <i>[Handwritten Signature]</i>		SEE REVERSE SIDE FOR TERMS AND CONDITIONS		TELEPHONE	DATE <i>[Handwritten Date]</i>
TITLE <i>[Handwritten Title]</i>	FEIN <i>[Handwritten FEIN]</i>	ADDRESS CHANGES TO BE NOTED ABOVE			

WHEN RESPONDING TO RFQ, INSERT NAME AND ADDRESS IN SPACE ABOVE LABELED 'VENDOR'