



State of West Virginia  
 Department of Administration  
 Purchasing Division  
 2019 Washington Street East  
 Post Office Box 50130  
 Charleston, WV 25305-0130

# Request for Quotation

RFQ NUMBER  
**COR61447**

PAGE  
**3**

ADDRESS CORRESPONDENCE TO ATTENTION OF  
**JOHN ABBOTT**  
**304-558-2544**

VENDOR

RFQ COPY  
 TYPE NAME/ADDRESS HERE  
**ASTORINO**  
**227 FORT PITT BLVD.**  
**PITTSBURGH, PA 15222**

SHIP TO

**DIVISION OF CORRECTIONS**  
**VARIOUS LOCALES AS INDICATED**  
**BY ORDER**

DATE PRINTED	TERMS OF SALE	SHIP VIA	F.O.B.	FREIGHT TERMS
01/14/2010				

BID OPENING DATE: **02/02/2010** BID OPENING TIME: **01:30PM**

LINE	QUANTITY	UOP	CAT. NO.	ITEM NUMBER	UNIT PRICE	AMOUNT
<p>THE BID SHOULD CONTAIN THIS INFORMATION ON THE FACE OF THE ENVELOPE OR THE BID MAY NOT BE CONSIDERED:</p> <p>SEALED BID</p> <p>BUYER: JOHN ABBOTT (32)-----</p> <p>RFQ. NO.: COR61447-----</p> <p>BID OPENING DATE: 2/2/2010-----</p> <p>BID OPENING TIME: 1:30 PM-----</p> <p>PLEASE PROVIDE A FAX NUMBER IN CASE IT IS NECESSARY TO CONTACT YOU REGARDING YOUR BID:  <u>412-765-1711</u>-----</p> <p>CONTACT PERSON (PLEASE PRINT CLEARLY):  <u>ROBERT J. WARD, P.E.</u>-----</p> <p>***** THIS IS THE END OF RFQ COR61447 ***** TOTAL: _____</p>						

**RECEIVED**  
 2010 FEB -2 A 8:06  
 PURCHASING DIVISION  
 STATE OF WV

SEE REVERSE SIDE FOR TERMS AND CONDITIONS

SIGNATURE:  TELEPHONE: **412-209-2804** DATE: **2/1/2010**

TITLE: **PRINCIPAL-IN-CHARGE** FEIN: **251731429** ADDRESS CHANGES TO BE NOTED ABOVE

WHEN RESPONDING TO RFQ, INSERT NAME AND ADDRESS IN SPACE ABOVE LABELED 'VENDOR'

ARCHITECTURE  
ENGINEERING  
INTERIOR DESIGN  
DESIGN/BUILD

# ASTORINO

February 2, 2010

Mr John Abbott  
Purchasing Division  
2019 Washington Street, East  
P O Box 50130  
Charleston, WV 25305-0130

RE: **RFQ No. COR61447**  
**DIVISION OF CORRECTIONS WORK RELEASE/TRAINING CENTER**

Dear Mr Abbott:

Astorino is pleased to submit this response to your request for qualifications the Work Release / Training Center projects. We have established a team that includes experienced architectural and engineering professionals who will fulfill your needs throughout the length of the contract

Among the strengths we provide are:

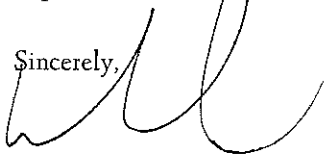
- A depth of experience with the design of correctional facilities and other relevant projects;
- A proven record of responding quickly and thoroughly to contracts of significantly varying scopes;
- Significant expertise in-house as a full-service architectural, engineering, interior design and construction services firm;
- An ability to draw upon the expertise of professionals while establishing a strong cooperative team

Astorino has enlisted the services of local West Virginia firms WYK Associates, Inc and KCI Technologies, Inc., to further enhance our team. We will leverage their relevant project experience in order to provide you with a superior level of service

The Astorino team's approach is designed to work closely with your representatives and any other individuals assigned to this project to ensure its success. We are dedicated to providing quality service by closely following project objectives, maintaining client contact, and most importantly by paying special attention to detail. Furthermore, we are able to respond rapidly to any circumstance or schedule requirements West Virginia DOC requests

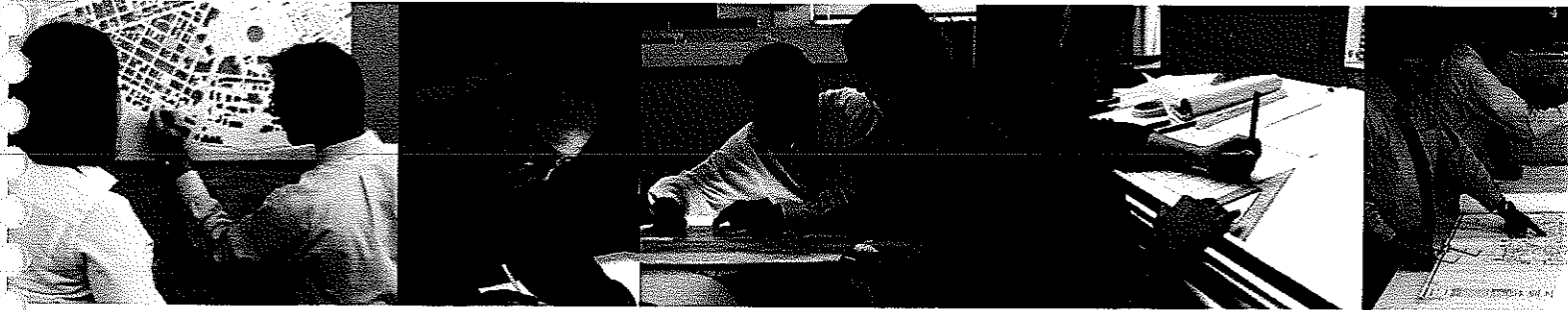
We appreciate this opportunity to provide our team's credentials. In the interim, should you have any questions or require additional information, please do not hesitate to call me at 412-209-2864.

Sincerely,



Robert J Ward, PE  
Principal-in-Charge

227 Fort Pitt Boulevard  
Pittsburgh Pennsylvania 15222  
T E L 412 765 1700 F A X 412 765 1711  
W W W astorino.com



# Experience

## COMPANY STATEMENT OF QUALIFICATIONS & EXPERIENCE

Founded in 1972, Astorino is an award-winning, full-service company with a strong team-based approach providing complete architectural, engineering, interior design, and design-build services. With a headquarters in Pittsburgh, PA, Astorino has built a reputation for quality design, innovative solutions and strong project management.

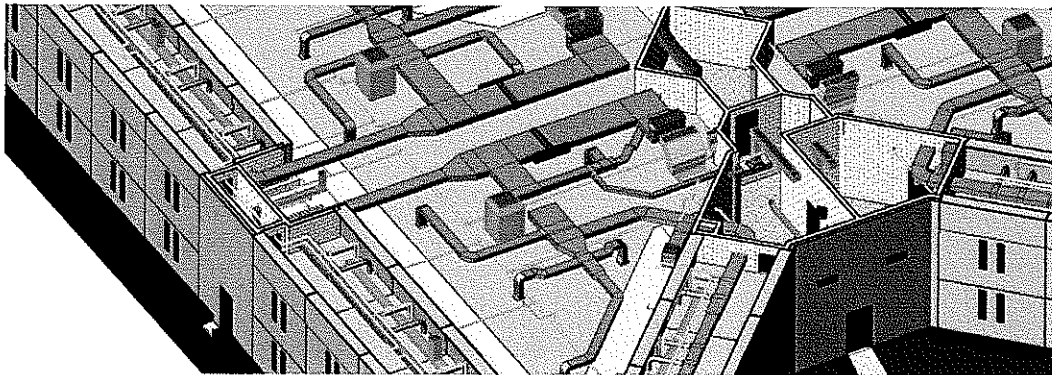
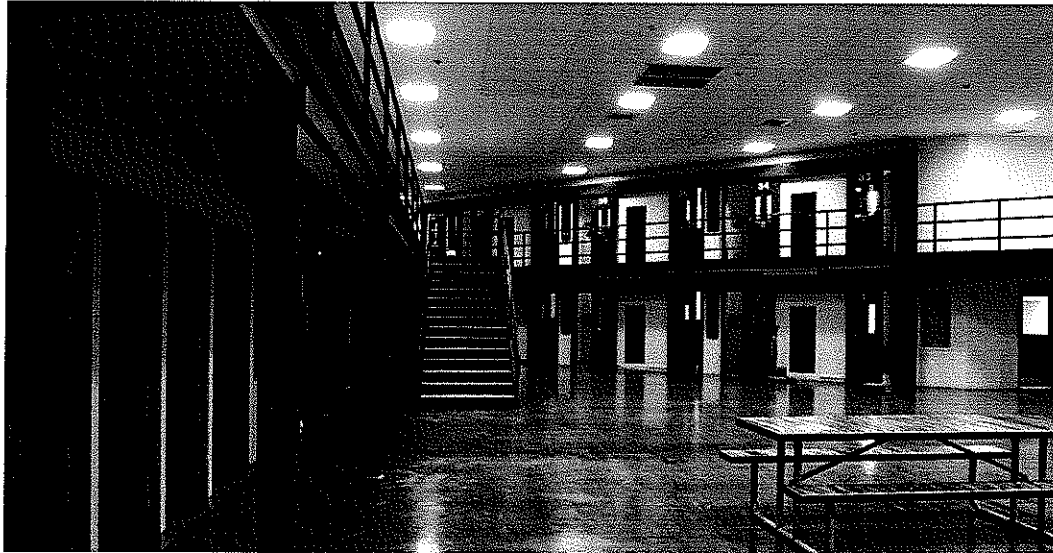
Over the past 38 years, Astorino has designed the full range of minimum to maximum-security facilities and we are intimately familiar with the security, technological, and logistical considerations that must be involved in each design. Our unique portfolio of prison housing units, homeless and vocational rehabilitation facilities and multi-family and public housing gives us a strong knowledge base and understanding of your project needs. We have designed many of these projects under extremely tight schedules and we will work with the West Virginia Division of Corrections in order to best meet the needs and desires of each individual work release/training center project.

A representation of our project expertise includes:

VA Medical Center Pittsburgh – Residential Living Villas  
H.J. Heinz III (HJH) Division, Pittsburgh, PA

- New Construction
- 61,000 SF
- \$18 million
- 98-beds
- Residential community setting for homeless and vocational rehabilitation
- Private and semiprivate space in seven separate residential villas
- Central support building provides residents and outpatients with access to:
  - Group dining

**ASTORINO**



State Regional Correctional Facility - Mercer  
New L3 Housing Unit, Mercer, Pennsylvania

- New Construction
- 33,000 SF
- \$11 million
- 128 cells/252 beds
- New electronic security systems include locks, cameras and a Central Control room

State Correctional Institution - Laurel Highlands  
New L3 Housing Unit, Laurel Highlands, Pennsylvania

- New Construction
- 33,000 SF
- \$11 million
- 128 cells/252 beds
- New electronic security systems include locks cameras and a Central Control room

The Astorino 360 process translates into the production of a fully developed, detailed, and better coordinated design solution based on thorough analysis and clearly established goals. As a tool to accomplish this, the Astorino 360 delivery model includes a planning template that establishes goals, responsibilities and outcomes for each team member and for each phase of the project.

Thorough planning results in buy-in from all team members and a more valuable, and usable work product. Astorino uses Building Information Modeling (BIM) as an intelligent tool within the larger framework of the 360 methodology. Simply put, we are leveraging the benefits of BIM's emerging technology to enable ourselves to work smarter. It's about information use, reuse, dissemination and exchange, literally a new way to practice. BIM connects the dots. It eliminates disconnected tasks and repetitive work, it reduces the workflow problems and, most importantly, it improves predictability and quality, giving clients more assurance of the product outcome.

Through the Astorino 360 integrated Project Delivery approach, better coordinated, cost effective, and energy efficient solutions are obtained.

## **ENERGY EFFICIENCY THROUGH SUSTAINABLE DESIGN**

Astorino is an industry leader in sustainable design and a pioneer in the LEED® (Leadership in Energy and Environmental Design) certification process. Sustainable design is an overarching goal of our organization. Our integrated design approach allows us to provide high quality, high performance buildings for our clients.

Sustainable design is about achieving both environmental sensitivity and bottom-line sensibility. This means that building an environmentally friendly facility is not just good for the environment—it's also good for business. Whether designing a new prison or a work release/training center, sustainable design is simply 'good design'. The end result is a building that can conserve natural resources, reduce operating costs, improve occupant health and comfort, all while maintaining design excellence.

Our approach to sustainable design emphasizes the application of strategies for site development (i.e. site selection issues, erosion and sediment control); water usage (i.e. low flow fixtures, drought tolerant plants); energy efficiency (i.e. building envelope design; energy system design); and materials and resources (i.e. recycled materials, low-emitting materials). We also believe that 'building green' need not translate into 'building expensive'. When sustainable design principles are integrated into the design process at the

ing with various state agencies as well as private developers and contractors. Their backgrounds range from WDOH to USDA Rural Development. They have engineers who understand and advocate for the needs of rural communities and public service districts. KCI has the knowledge to aid their clients in all aspects of a project including but not limited to preliminary study, preliminary design, funding assistance, final design, bidding services, construction administration, construction inspection, or any other service needed to complete these types of projects.

# Staffing & Resources

## **ENSURING ACCURACY & COMPATIBILITY**

An integral part of the Astorino 360 Integrated Project Delivery Process is its Quality Assurance/Quality Control (QA/QC) System described below

Astorino defines and provides QA/QC as a systematic process of monitoring, evaluating and improving the quality and effectiveness of our services and products to our client. Astorino will use its Integrated Project Delivery Project Guide and Quality Assurance/Quality Control (QA/QC) System to ensure that information is not omitted from projects. This manual contains a checklist with over 294 points of procedure, an 850-item drawing checklist, and an 800-point interdisciplinary coordination checklist. For all projects, and project phases, the project will not be released to move forward without a sign off by Astorino and West Virginia Division of Corrections project management staff. By employing these standards and checklists, it will enable the project team to deliver a coordinated effort. This guide contains:

- EXPLANATION OF TOOLS
- PROJECT MEETING MINUTES TEMPLATE
- INTEGRATED PROJECT DELIVERY RESPONSIBILITY
- TASK/MILESTONE WORKPLAN
- PROJECT CONTENT GUIDELINES
- QA/QC CHECKLISTS

Our design process incorporates an in-house review of all plans, drawings, cost estimates, and materials. Working from established procedures and standardized checklists, using Building Information Modeling (BIM), and computerized schedules and cost estimates, all materials move through our professional staff to the most experienced supervisory personnel.

**ASTORINO**



ROBERT J WARD PE  
Principal-in-Charge  
rward@astorino.com

Mr. Ward is the President of Astorino's Engineering Division as well as a Principal of the firm. Mr. Ward is a registered engineer with over 24 years of experience and highly developed skills in project budgeting, scheduling, design, and management. He is responsible for the management of project teams and oversight of all design activities to ensure successful project delivery through technical integrity, operational performance, and overall quality control. He plays an active role in business development by continuously developing and maintaining strong client and consultant relationships. Additionally, Mr. Ward is responsible for the day-to-day operations of the Engineering Division.

Since joining Astorino in 1986, Mr. Ward has provided a full range of consulting engineering services for a vast array of project types such as correctional and multi-family housing.

Mr. Ward brings this expertise to his role as Market Segment Leader where he oversees the Justice and Transportation pursuits at Astorino. As one of three Market Segment Leaders, his responsibilities include marketing, project planning and management, design development, client relations, subconsultant coordination, construction administration, strategic planning, staffing, scheduling, and contract review.

SELECT PROJECT EXPERIENCE

- 100 7th Street Condominiums, Renovations, Pittsburgh, PA
- A. J. Demor Towers, Apartment Building, Verona, PA
- Allegheny County Housing Authority, Hays Manor, Pittsburgh, PA
- Beaver County Housing Authority, Renovations, Beaver County, PA
- City of Pittsburgh Housing Authority, Renovations, Pittsburgh, PA
- Elk County Housing Authority, Modernization, Elk County, PA
- Greensburg Presbyterian Home, New Assisted Living Facility, Greensburg, PA
- Heritage Nursing Home, Shady Side Hospital, Pittsburgh, PA
- Irene Stacey Mental Health Facility, Butler, PA
- Lafayette Manor, Assisted Living Facility, Uniontown, PA
- Housing Authority of the City of Pittsburgh, Multiple Projects, Pittsburgh, PA
- King Edward Apartment Complex, Pittsburgh, PA
- Presbyterian Home - Hillisview Chapel, Pittsburgh, PA
- State Correctional Institute  
New 1000-cell Facility and Campus, Clearfield, PA  
Addition for 180 cells, Mercer, PA  
New Prison Campus (800 Acres), Somerset, PA
- State Correctional Institute - Laurel Highlands, New L3 Housing Unit, Laurel Highlands, PA
- SCI Mercer, 128 Bed Level 2 Housing Unit, Mercer, PA
- Sweetbriar Place Elderly Housing, Pittsburgh, PA
- Uniontown Housing for the Elderly, Fayette Court, Uniontown, PA
- VA Pittsburgh Medical Center, Domiciliary Residential Living Villas, Pittsburgh, PA
- Washington County Housing Authority, Upgrades, Washington County, PA
- Westminster Presbyterian Nursing Home, Pittsburgh, PA
- Woodhaven Rest Home, Pittsburgh, PA
- United States Army Corps of Engineers, Armed Forces Reserve Center  
Bethlehem, PA - Engineering Services  
Camp Bullis, TX - Engineering Services  
Grand Prairie, TX - Engineering Services

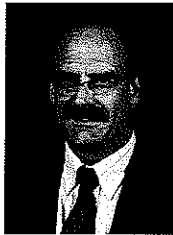
EDUCATION

- Gannon University, Bachelor of Science, Mechanical Engineering, 1985

REGISTRATIONS

- Pennsylvania PE-041458; Florida PE-63438; West Virginia PE-16499; NCEES





JOHN R SILLAMAN RA NCARB  
Senior Associate - Project Architect  
jsillaman@astorino.com

Mr Sillaman is a Registered Architect and Senior Associate with more than 30 years of experience in a variety of areas including education, civic transportation commercial, healthcare and industrial. Within these areas he has been responsible for programming design code review and quality control for the projects. In recent years he has worked closely with Connellsville Area School District Hempfield Area School District Norwin Area School District and Westmoreland County Community College on a wide variety of project types demonstrating experience in school planning design and PlanCon coordination.

#### LECT PROJECT EXPERIENCE

- Adelphoi, Inc., Vincent Family Center, Latrobe PA
- Cannonsburg Public Library, New Construction, Cannonsburg PA
- Children's Hospital of Pittsburgh of UPMC, Replacement Facility, Pittsburgh PA
- District Justice Office, New Facility, Bradenville, PA
- Hempfield Township Municipal Building, Office Renovation, Hempfield, PA
- Hempfield Township Municipal Garage, New Facility, Hempfield PA
- Housing Authority of the City of Pittsburgh, Pittsburgh PA  
100 Ross Street  
Northview Heights - UFAS Compliance
- Jefferson Hills, Public Safety Building & Regional Training Center, Jefferson Hills, PA
- Westmoreland Chamber of Commerce, New Facility, Greensburg PA

#### OTHER PROJECT EXPERIENCE

- Connellsville Area School District, Miscellaneous Projects, Connellsville, PA
- Hempfield Area School District, Miscellaneous Projects, Hempfield, PA
- Norwin School District, Miscellaneous Projects, North Huntingdon, PA
- Pittsburgh Public Schools, Miscellaneous Projects, Pittsburgh, PA
- Westmoreland County Community College, Miscellaneous Projects, Youngwood, PA

#### EDUCATION

- The Pennsylvania State University, Bachelor of Architecture, 1974

#### REGISTRATIONS

- Pennsylvania RA - 007997X
- NCARB Registration 22072



JOSEPH G SABO PE LEED AP  
Engineering Project Manager  
jsabo@astorino.com

Mr. Sabo, the Engineering Project Manager for the VA projects at the Heinz site in Aspinwall, PA and University Drive site in Pittsburgh, PA, is proficient in system selection, HVAC load calculations, equipment sizing and configuration, energy usage modeling, coordination of technical team, communications with client and technical staff, value engineering, bidding support, construction follow and compliance verification of contract documents. He is adept at catalog and software selections of all major manufacturers' equipment; is well-versed in compiling project punch-lists; is a competent user of AutoCAD, trained in REVIT, and is skilled in every form of contact enhancing coordination efforts between trades. Mr. Sabo participates in the Pittsburgh Chapter of ASHRAE.

#### SELECT PROJECT EXPERIENCE

- Children's Hospital of Pittsburgh of UPMC, Lawrenceville Replacement Facility, Pittsburgh, PA  
East Pavilion
- Edinboro University, Cooper Science Building Renovation, Edinboro, PA
- Greater PA Regional Council of Carpenters Union, New Training Facility, Pittsburgh, PA
- Meadville Cancer Care Center, Phlebotomy Lab Redesign, Meadville, PA
- Bert Fish Medical Center, Mallory Wound Care, New Smyrna Beach, FL
- North Way Christian Community, Wexford, PA
- Pittsburgh Public Schools, Pittsburgh, PA  
Schenley High School Feasibility Studies, Plaster Issue and Ventilation System  
Sterrett Middle School Renovations
- PA Turnpike Commission, Everett Facility, West Providence, PA
- SCI Laurel, New L3 Housing, Somerset, PA
- SCI Mercer, New L3 Housing, Mercer, PA
- Slippery Rock University, Vincent Science Center, Slippery Rock, PA
- Three PNC Plaza, Pittsburgh, PA  
Building Shell & Core  
Condo Fit-Out  
Hotel Fit-Out  
LEED Certification
- VA Pittsburgh Medical Center, CARES Solidation, Pittsburgh, PA  
Site Infrastructure  
Administration Building  
Ambulatory Care Center  
Domiciliary Residential Living Villas  
Research Office Building and Helipad  
Sustainable Design Preliminary Plans
- VA Medical Center Lebanon, Radiology Expansion, Lebanon, PA

#### EDUCATION

- Carnegie Mellon University, Bachelor of Science, Dual Major in Mechanical Engineering and Mathematics

#### REGISTRATIONS

- Professional Engineering (PE) - Pennsylvania - #PE036813E

#### PROFESSIONAL AFFILIATIONS

- Member, American Society of Heating, Refrigeration and Air Conditioning Engineers
- Member, American Society of Plumbing Engineers

ASTORINO



DONALD L. JAKIEL, P.E.  
Department Head - Electrical Engineering  
djakiel@astorino.com

Mr. Jakiel is a registered Electrical Engineer in seven states with nearly 20 years of experience providing professional electrical system design services. He serves as Astorino's Electrical Department Head where his responsibilities include complete electrical design packages, specifications, client and contractor coordination, substation and power distribution systems, control systems, lighting systems, fire alarm systems, telecommunication, local and wide area networks, estimates, construction documentation and administration and bid analysis.

Mr. Jakiel has extensive experience designing electrical and telecommunication systems for healthcare

hospitality, secondary/higher education and corporate office projects. He is also responsible for the design of power distribution systems and fire alarm security systems; telephone and computer networking; and set-up and implementation of maintenance programs for power distribution and switchgear equipment.

Mr. Jakiel is extremely knowledgeable of current NEC/IBC codes and LEED® green building standards for the development of construction documents.

#### SELECT PROJECT EXPERIENCE

- Beaver County Housing Authority, Friendship Commons, Beaver County, PA
- Highmark Inc., Phased Renovation of Headquarters Complex, Camp Hill, PA
- Pennsylvania Turnpike Commission, Turnpike Industrial Park Data Center and Administration Building, Harrisburg, PA

#### SELECT PRIOR EXPERIENCE

- Byham Theatre, Pittsburgh, PA
- California University of Pennsylvania, Phase 5 Student Housing, California, PA
- Dulles International Airport, Fairfax, VA  
Four Gates Concourse Expansion  
West Expansion/APM Project  
APM Station Lighting Design
- Marriott Renaissance Hotel, Pittsburgh, PA  
Four Star Hotel in Cultural District
- Nemaconn Woodlands Resort, Chateau LaFayette - Ritz Hotel, Farmington, PA
- Oglebay Hall, Morgantown, WV
- Philips Respironics, RIST Manufacturing Facility, Murrysville, PA
- Slippery Rock University, Phase 2 Student Housing, Slippery Rock, PA
- Titan Corporation, Annapolis, MD  
Corporate SCIF office space and Training Facility
- Westmoreland County Correctional Facility, Greensburg, PA

#### EDUCATION

- Bachelor of Science, Electrical Engineering Technology, Point Park University, 1990

#### REGISTRATIONS

- Pennsylvania, Ohio, West Virginia, Maryland, Virginia, New Jersey and District of Columbia

#### PROFESSIONAL AFFILIATIONS

- Past Member/Treasurer, Illuminating Engineering Society of North America



MICHAEL G BRENNAN PE  
Department Head-Structural Engineering  
mbrennan@astorino.com

Mr. Brennan is a Principal and head of the Structural Engineering department at Astorino. As such, he is responsible for ensuring structural adequacy of all Astorino projects and is the Structural Engineer of Record. Among his responsibilities are the design of concrete and steel superstructures, foundation alternatives, forensic and due diligence inspections, preparation of construction documents, and integration of structural design with architecture and MEP engineering design. He is also responsible for management of staff to meet deadlines and budgets.

During his 30 years of experience, Mr. Brennan has also worked with numerous utility clients on power projects in positions of increasing responsibility. Thirteen of those years were with Stone & Webster Engineering Corporation of Boston, Massachusetts.

Mr. Brennan is a member of the American Institute of Steel Construction, where he is currently the regional president of the Professional Member Forum. Mr. Brennan is actively involved in his community and is past chairman of the Bethel Park Planning Commission.

#### SELECT PROJECT EXPERIENCE

- VA Pittsburgh Medical Center, Domiciliary Residential Living Villas, Pittsburgh, PA
- A.J. Demor Towers, Pittsburgh, PA
- Broadhead Manor Upgrade, Pittsburgh, PA
- Housing Authority City of Pittsburgh, Glen Hazel High Rise Generator, Pittsburgh, PA
- Louis Mason, Jr. High Rise, Pittsburgh, PA
- SCI Laurel Highlands, Restricted Housing and Medical Stepdown Units, Somerset, PA
- SCI Mercer, 128 Bed Level Two Housing Unit, Mercer, PA
- SCI Rockview, Level Two Housing and Renovation, Bellefonte, PA
- Uniontown Housing for the Elderly, Fayette Court, Uniontown, PA
- Westminster Presbyterian Nursing Home, Pittsburgh, PA
- YMCA, Homewood-Brushy Branch Renovation, Pittsburgh, PA

#### EDUCATION

- University of Massachusetts, Bachelor of Science, Civil Engineering with emphasis on Structural Engineering, 1980
- University of Pittsburgh, Masters of Science, Civil Engineering with emphasis on Structural Engineering, 1997

#### REGISTRATION

- Delaware 13009
- Florida PE-0055700
- Massachusetts 40384
- Pennsylvania PE-039762-E

WYK Associates, Inc  
205 Washington Ave  
Clarksburg WV 26301  
304 624 6326  
bill@wykarchitects.com

## William E. Yoke Jr., AIA NCARB

President | Principal - In - Charge

### EDUCATION

Bachelor of Science - Pre-Architecture 1968  
Clemson University  
Clemson, SC

### PROFESSIONAL ASSOCIATIONS

American Institute of Architects  
AIA/ West Virginia  
West Virginia Board of Architects  
National Council of Architectural Registration Boards

### EMPLOYMENT SUMMARY

WYK Associates, Inc	1978 – present
WYK Architects	1975-77
Whalen L. King, Architect	1973-74
United States Navy	1969-73
Giese Engineering	1968-69

### ARCHITECTURAL REGISTRATION

West Virginia (Registration #1566)  
Virginia (Registration #401-009314)  
Maryland (Registration #10172)  
Pennsylvania (Registration #RA-014502)  
Nat. Council Architect (Registration #23448)

### SELECTED PROJECTS

Bridgeport Public Safety Building - Bridgeport, WV  
West Pike Street Parking Facility - Clarksburg, WV - 2006 AIA West Virginia Merit Award  
Information Manufacturing Corporation - Cowan, WV - 2007 AIA West Virginia Merit Award  
West Virginia Air Center, Harrison-Marion Regional Airport - Bridgeport, WV  
Eastern Army Aviation Training Site, Harrison-Marion Regional Airport - Bridgeport, WV  
City National Bank Branches – Bridgeport and Clarksburg, WV  
WVU Employees' Federal Credit Union – Morgantown, WV  
Harrison County Branch Banks - Bridgeport, Nutter Fort, and Clarksburg Route 19S, WV  
Peterson-Central Elementary School - Weston, WV  
New Broadus Hospital - Philippi, WV  
Addition to Vienna Public Library - Vienna, WV  
Kingsford Charcoal - Parsons and Beryl, WV  
West Milford Elementary School Addition – West Milford, WV  
Oncology Center for Davis Memorial Hospital - Elkins, WV  
Hewes Avenue Parking Structure - Clarksburg, WV  
West Union Bank Branch – Harrisville, WV  
West Union Bank Branch - Newpointe, Clarksburg, WV - 2007 AIA West Virginia Merit Award

Mr. Yoke began his career with this firm in 1973 as a project manager for the late Whalen King, AIA. He has been involved in every facet of the firm's operations over the years becoming its President in 1996. Mr. Yoke's primary role as a project architect or principal-in-charge includes the projects listed below.

Mr. Yoke has provided services for a wide variety of projects in both the public and private sectors including schools, housing, offices, industrial facilities and interior renovations.

Mr. Yoke is very involved in both his profession and community. He has served two terms as President of AIA/West Virginia and several terms as President of the West Virginia Board of Architects. He has been Chairman of Region 2 of the National Council of Architectural Registration Boards, and serves on their National Committee involving examination for and regulation of the profession. He also serves on the advisory committee for the Architectural Engineering Technology Program at Fairmont State University. He received the Harrison County Chamber of Commerce 2008 Chairman's Award. He is a long time member of the Madrigal Singers of Clarksburg and vice president of the local Civil War Roundtable.

WYK Associates, Inc  
205 Washington Ave.  
Clarksburg WV 26301  
304.624.6326  
stephen@wykarchitects.com

## Stephen M. Kelley, Associate AIA

Project Manager

### EDUCATION

Bachelor of Architecture 2000  
Philadelphia University  
Philadelphia PA

### PROFESSIONAL ASSOCIATIONS

American Institute of Architects  
AIA/ West Virginia

### EMPLOYMENT SUMMARY

WYK Associates, Inc	2007 – present
Blackwood Associates, Inc	2002 - 2007
Kurtz Construction	1999 - 2001
Philadelphia University Athletic Dept	1996 - 2000
Eagle Lodge Golf & Conference Center	1997

While in college, Mr. Kelley worked two years for a construction company that focused mainly on roofing and masonry work of historic homes and buildings in the Philadelphia area. After graduation he took that experience and applied it to several projects at another local architecture firm, all the while completing his profession's required Intern Development Program. He is currently pursuing his professional license.

Mr. Kelley has gained broad experience in both the private and public sectors of the construction/design industry. He has been either the Project Designer or Project Manager of range of projects totaling over \$22 million in value.

Mr. Kelley is involved in several community organizations. He is a board of director's member of the Salem Area Chamber of Commerce, the Fort New Salem Foundation and the Harrison County Development Authority. He served in Kuwait with the US Army Reserve and is now a trustee of VFW Post 9151 in Salem. Currently he also serves as project coordinator for the Salem Veterans Memorial Restoration Project.

### SELECTED PROJECTS

West Milford Elementary School Addition West Milford, WV  
Entry Replacements and Interior Hardware at Eight Harrison County Schools  
Monongalia Hospital Orthopedic Center Renovation, Morgantown, WV  
New Flatwoods Branch for the Bank of Gassaway Flatwoods, WV  
Louis A Johnson VA Medical Center - Multiple Renovation Projects, Clarksburg WV  
United Hospital Center's CCCC Building Entry Replacement, Clarksburg, WV  
Harrison County Schools Entries and Hardware Replacement at Numerous Locations  
Renovation to Johnston School, Salem, WV  
Window System Insulated Panel Replacement- Hopemont Hospital, Terra Alta WV  
Pincrest Hospital TB Unit Renovations, Beckley WV  
Multi-Tenant Building for the Braxton County Development Authority, Flatwoods WV  
Jayenne Elementary School Addition & Renovation, Fairmont WV  
BC Bank Facility, Fairmont, WV  
Historical Masonry and Window Restorations to Carskadon Mansion, Keyser, WV  
Historical Exterior Restorations to Waldomore, Clarksburg WV  
New Veterans Nursing Home Facility at Louis A Johnson Veterans Hospital Clarksburg, WV

# Robert Milne, PE

Senior Associate

## Education:

BS / 1990 / Civil Engineering / West Virginia University  
MS / 1999 / Civil Engineering / West Virginia University

Years Experience: 20

Years with KCI: 8

## Registration:

PE / WV / 014177 / 1999  
PE / PA / PE061465 / 2002

## Experience:

Mr Milne is the Regional Practice Leader in KCI's Morgantown, West Virginia office and is responsible for the office's daily operation, supervision of staff, and management of large projects. Mr Milne is also experienced in civil/site design, utilities, and buildings as well as roadway and storm sewer design; highways, bridges, traffic studies; and construction administration and inspection. Relevant project experience includes:

**A/E Support Services Multiple Award Task Order Contracts, Nationwide. Task Manager.** KCI is a subconsultant on this open-end contract for the Federal Bureau of Prisons. KCI provided site/civil and MEP engineering and surveying services at the Butner Federal Medical Center in North Carolina, the Cumberland Correctional Institution in Maryland, the Alderson FPC Multi-Purpose Building in West Virginia, and the FCI Memphis New Outside Administration Building in Tennessee. Lead civil engineer for site design, including the design of parking lots, roadway improvements, utility lines, sidewalks, drainage, stormwater retention, grading plans, erosion and sediment control, and cost estimates.

**West Virginia University Architectural and Engineering Open End, Morgantown, WV, Project Manager.** KCI was awarded an open end contract to provide multi-disciplinary engineering services to the West Virginia University. KCI's total fees estimated to be \$500,000. Responsibilities include the review of existing plans, structural assessment, bridge design, report preparation, and construction documents. Tasks include a structural assessment of the Summit Hall Parking Garage, a structural assessment of the Evansdale Library, and rehabilitation of the Percival Hall Pedestrian Bridge.

**New Northside Fire Station, Morgantown, WV, Project Manager.** KCI was a subconsultant for the new Northside Fire Station for the City of Morgantown. KCI was responsible for overall site design, access roads, utility lines, sidewalks, drainage, stormwater quality and retention, grading plans, erosion and sedimentation control plans, and the site/civil permitting. Client is pursuing LEED certification.

**Fort Meade AIE, Fort Meade, MD. Project Manager.** KCI is currently working for the U.S. Army Corps of Engineers under a design-build Facility Repair and Renewal (FFR) Contract to provide site infrastructure design and construction services to Fort Meade. The objective of the FFR contract is to prepare five Access Control Points (ACPs) at Fort Meade for installation of the U.S. Army Automated Installation Entry (AIE) System. Mr. Milne is responsible for the development of the traffic study. Performed site investigations at all five ACPs and prepared report. Also responsible for the development of conceptual designs at each gate. Responsible for the development of the project budget, coordination of subconsultants, and acted as the primary point-of-contact for client.

**Dugway Proving Ground, UT Construction Documents & Project Specifications, Salt Lake City, UT. Project Manager.** KCI is currently working for the U.S. Army Corps of Engineers under a design-build Medical Facilities Renewal Contract to provide site infrastructure design and construction services to the Dugway Proving Grounds. The objective of the design-build contract is to prepare two Access Control Points (ACPs) at the Dugway Proving Grounds for installation of the U.S. Army Automated Installation Entry (AIE) System. Responsible for the administration and completion of the contract documents for the Phase II electrical engineering work plan.

**Fort Leavenworth AIE, Fort Leavenworth, KS. Project Manager.** KCI is currently working for the U.S. Army Corps of Engineers under a design-build Facility Repair and Renewal (FFR) Contract to provide site infrastructure design and construction services to Fort Leavenworth. The objective of the FFR contract is to prepare three Access Control Points (ACPs) at Fort Leavenworth for installation of the U.S. Army Automated Installation Entry (AIE) System. Mr. Milne is responsible for the development of the traffic study. Performed site investigations at all three ACPs and prepared report. Also responsible for

# Construction Management

With our combined staff of nearly 130 professionals, the Astorino/WYK team has the resources to dedicate to the timely and successful completion of your project. Our team's extensive experience in similar sized projects allows us the benefit of recognizing and avoiding issues that have the potential to derail project schedules.



We believe that delivering a timely project starts with the establishment of clear and documented expectations for deliverables at each phase, as well as diligence and proper staffing to meet project milestone dates. We have regularly completed multiple complex projects for the same client in the same year, with no delays in project delivery. Our experience with

challenging projects with very strict deadlines has polished our expertise in delivering complex documents on time.

Integral to the Astorino 360 process, our Project Manager team will produce a detailed project schedule with milestone delivery dates for all critical information at each phase of the project. Working with the WW DOC, we will determine what level and type of drawings and specifications will be conveyed at the end of each major phase of the project. With the schedule and deliverables defined, all parties must agree to be accountable to the schedule and to each other to meet the project timeline.

At the end of each design phase, a progress set of drawings and specifications will be submitted to the WW DOC for review. The Astorino team will present the drawings and the updated project budget for authorization to proceed to the next phase of the project.

**ASTORINO**