

Expression of Interest  
**St. Mary's  
Correctional  
Center**  
COR61430

Submitted to:



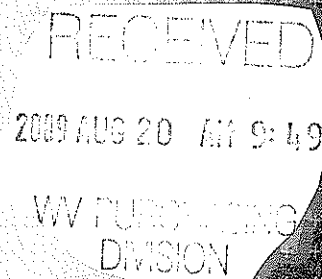
**John Abbott**  
Purchasing Division  
2019 Washington Street, East  
P.O. Box 50130  
Charleston, WV 25305-0130

Submitted by:

**LABELLA**  
Associates, P.C.

300 State Street  
Suite 201  
Rochester, NY 14614  
(585) 454-6110

August 20, 2009



Relationships. Resources. Results.

Engineering  
Architecture  
Environmental  
Planning



300 State Street, Suite 201, Rochester, NY 14614

Phone 585.454.6110  
Fax 585.454.3066  
www.labellapc.com

August 19, 2009

John Abbott  
Purchasing Division  
2019 Washington Street, East  
P.O. Box 50130  
Charleston, WV 25305-0130

**Re: St. Mary's Correctional Center**

Dear Mr. Abbott:

With over 30 years of experience in planning and designing state prisons and county jails, LaBella Associates' Criminal Justice Design Group has the know-how to successfully respond to our clients' need for operationally functional and cost-effective facilities. Our unique and specialized experience working with state and county agencies, cultivated over many years, makes possible our ability to resolve each facility's individual needs. Our staff has a thorough knowledge of all requirements, codes, and classification requirements assuring timely and successful progress of a project. State-of-the-art facilities and ongoing training program keep employees abreast of latest methods of correctional facility design.

The extensive experience of LaBella Associates and the member of our design team includes architecture and engineering projects at 32 prison facilities in New York State. This includes additions and renovations to maximum, medium, and minimum security facilities, as well as mechanical and electrical upgrades and replacements. We believe that our broad knowledge of prisons will transfer well to the work required at the St. Mary's Correctional Center.

For this Expression of Interest, we have teamed with Weidlinger Associates, Inc. to provide structural engineering design. They are very familiar with the state correctional facilities having worked on many in New York State. LaBella Associates and Weidlinger Associates have worked together on correctional facilities projects for the NYS Office of General Services.

If you have any questions or require additional information, feel free to contact me at (585) 295-6225 or rhealy@labellapc.com.

Sincerely,

**LABELLA ASSOCIATES, P.C.**

A handwritten signature in black ink, appearing to read "R. Healy", is written over the company name.

Robert A. Healy, AIA  
Senior Vice President

P6037

# New York State Office of General Services

Attica Correctional Facility, Building No. 17

LaBella Associates is working with the State Office of General Services (OGS) and the State Department of Correction (DOCS) on a renovation of Building No. 17, which is the facilities' segregated housing unit.

The scope of the renovation includes the replacement of an existing steam radiator system with a new perimeter hot water source heating. The project also includes the replacement of the existing windows with new energy efficient steel security windows and glazing.

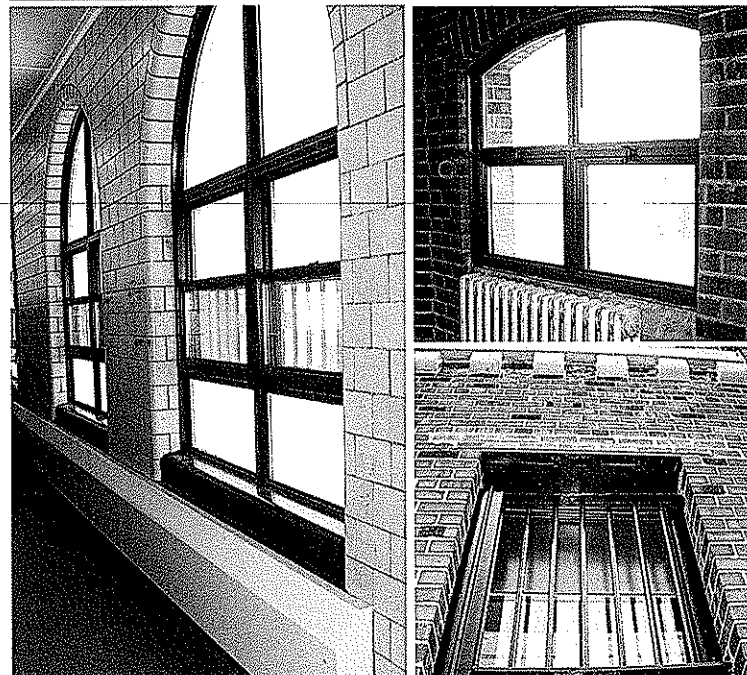
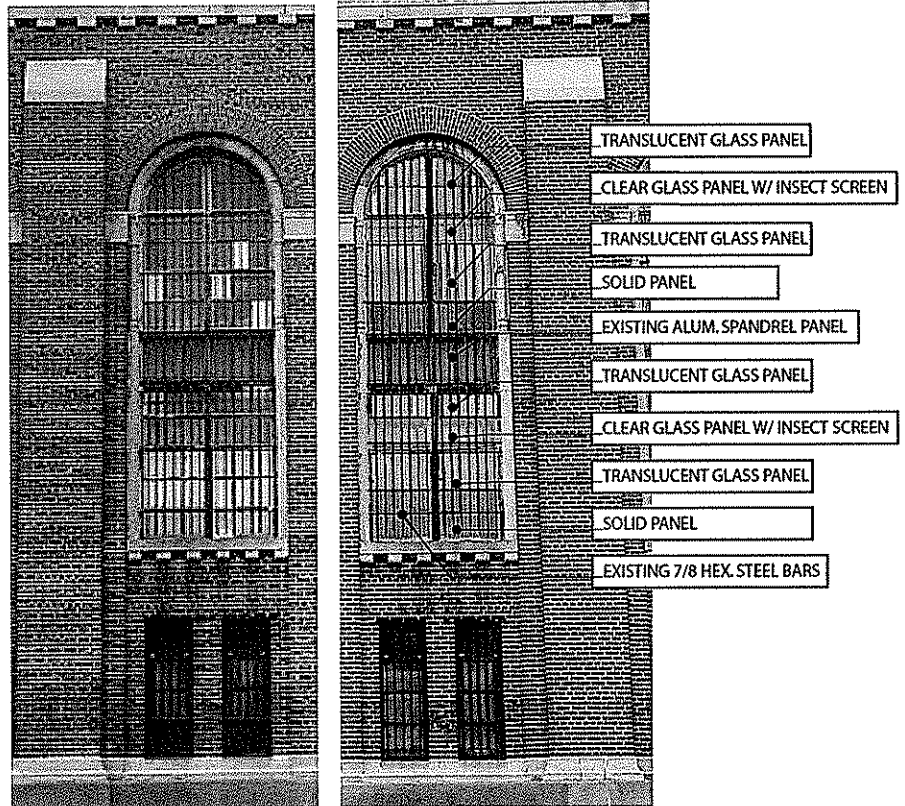
LaBella Associates is assisting OGS in an architectural review of the project by the State Office of Parks, Recreation, and Historic Preservation (OPRHP). The window and HVAC replacements will require asbestos abatement design and monitoring. The facility is at the maximum-security level and will be occupied by segregated inmates throughout the renovation. LaBella has assisted OGS and DOCS in developing a phased approach to the construction. The plan will allow DOCS to continue to operate the facility as a housing unit by many inmates in sequence and allow for vacant galleries to be renovated.

#### Reference:

Richard Beerle, R.A.  
518-473-0211

**Completion Date:** 2005

**Construction Cost:** \$1,300,000



# New York State Office of General Services

## Attica Correctional Facility, Buildings A, B, and D

LaBella Associates is working with the NYS Office of General Services (OGS) and the NYS Department of Correction (DOCS) on the replacement of the existing heating systems and windows in the general housing buildings A, B, and D.

The buildings are used for general population housing for over 1,300 inmates. The heating system and windows being replaced are original to these 1930's buildings. The windows make up over half the perimeter wall area and span three floors. Guard tower at each end of Buildings A and B serve as a fourth floor observation levels that looks onto recreation yards and the campus perimeter. Windows in the towers also needed to be addressed.

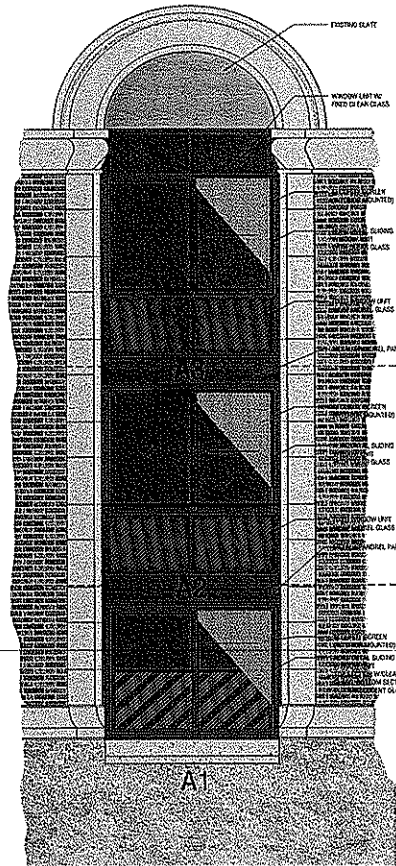
The existing windows are being replaced with a window unit system that is compatible with the investments being made in the heating system. Due to the size of the openings, the windows are a critical component of heat loss calculations. The recommended basis of design is a window frame made of solid hot rolled steel, 1" insulated glass with a Low E glazing, and a 10-gauge woven wire mesh security screen. The replacement windows operation will be horizontally sliding with pull down lock releases so that the window can be slide open.

Challenges on this project included Phasing, Code Compliance of Light and Ventilation regulations, and preserving the Historical significance and look of the original buildings. Project phasing needs to be seamless so that the facility only needs to provide temporary housing for one 40-man company at a time. The facility approved the detailed and precise plan designed by LaBella. The existing windows offer large openable areas for ventilation, approximately 12 s.f. per window. In addition to the ventilation, the existing openings offer abundant daylight and views. These issues were important to the facility and also needed to meet the current codes requirements for Ventilation and Natural Light. These requirements were handled with the type of window chosen, a horizontal slider that maximizes the full opening.

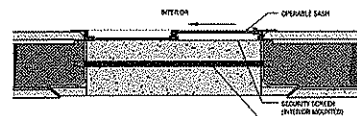
**Contact:** Rick Whitebread, PE, CEM, LEED AP, 518-473-6807

**Completion Date:** 2009

**Construction Cost:** \$9,500,000



WINDOW ELEVATION - ENLARGED



WINDOW PLAN - ENLARGED



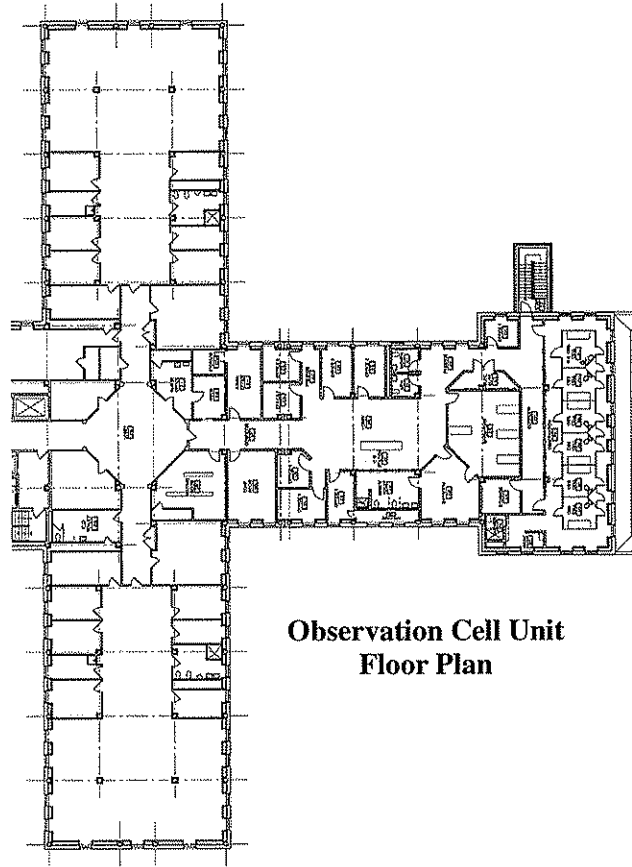
# Greenhaven Correctional Facility

Stormville, New York

LaBella Associates has two projects currently in progress for the NYS Office of General Services related to NYS Department of Correctional Services (NYSDOCS) Mental Health Program.

We are designing a major renovation of an existing Observation Cell Unit to include new observation cells which meet current standards for NYSDOCS, as well as dorm and dayroom areas, nursing and medication prep facilities, and office spaces for mental health and medical staff.

For the Intermediate Care Program (ICP) Expansion, we are designing a major renovation of an existing inmate housing unit and adjacent program unit, to upgrade inmate cells, code upgrades, recreation yard, and new program and office space for mentally ill inmates on a path toward being reintroduced into the general population.



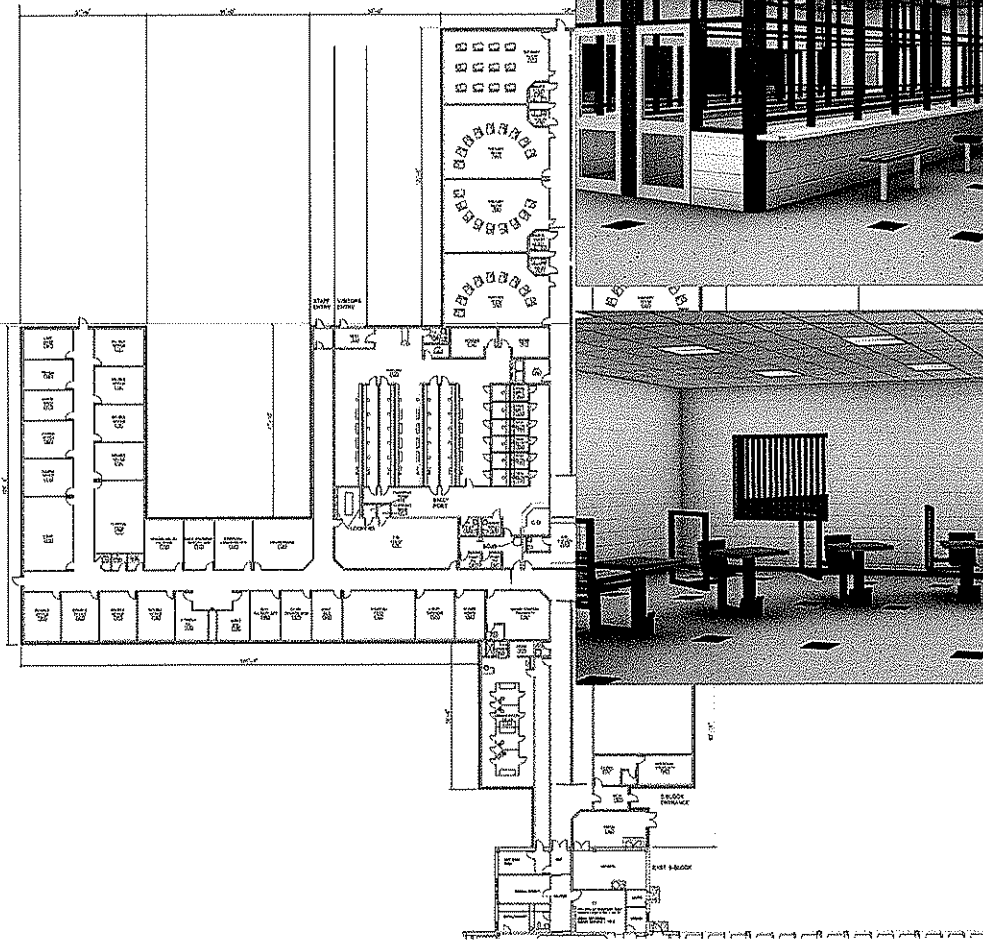
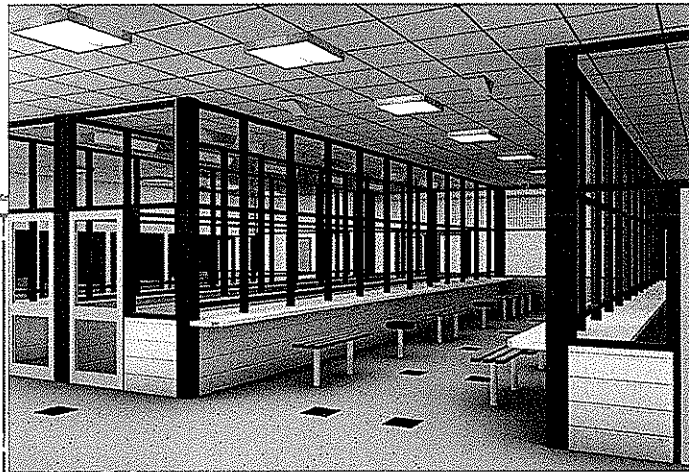
**Observation Cell Unit  
Floor Plan**

# Marcy Correctional Facility Residential Mental Health Unit

Marcy, New York

LaBella designed a 58,000 s.f., LEED Silver certified Residential Mental Health Unit building addition to the existing Special Housing Unit. The addition provides program, classroom, and therapy spaces for treatment of mentally ill inmates. The building also includes a visiting area and office space for OMH and Corrections staff. This design is a prototype for similar facilities to be constructed at other state correctional facilities.

This project is for the NYS Office of General Services related to NYS Department of Correctional Services (NYSDOCS) Mental Health Program.



# NYSOGS – Watertown Correctional Facility

Building Nos. 23, 27, 41, 46, 48, 76, 101, 102, 104, 105, 106

LaBella Associates is currently working with the New York State Office of General Services (OGS) for the New York State Department of Corrections on the Watertown Correctional Facility. This project consists of the replacement of windows for (11) of the (57) buildings currently on the site.

The project intent is to upgrade the existing deteriorating, inefficient, and poorly operating windows to new windows that operate properly and provide a comfortable, safe, and secure environment. LaBella Associates worked closely with OGS and DOCS to evaluate and determine the best possible solution for each building in relation to its use.

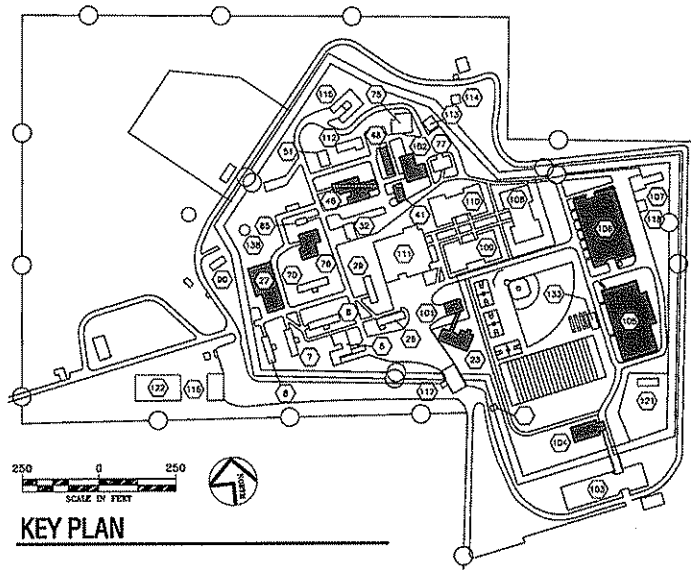
The construction scope of work is to remove the existing windows from these openings including asbestos abatement as required. New work includes providing new windows into the existing openings and to provide an operable security screen to the exterior side of the openings. There are 48 window types being used overall throughout the (11) buildings, all of which are thermally broken aluminum framed windows with insulated glass, many of which were customized for specific needs and usages.

LaBella Associates estimated construction cost for this project was \$665,064.00. Bids were received resulting in a low bid of \$668,800.00 (within 1% of the estimated cost).

**Contact:** Robert Lis, R.A., 518-474-8197

**Completion Date:** 2007

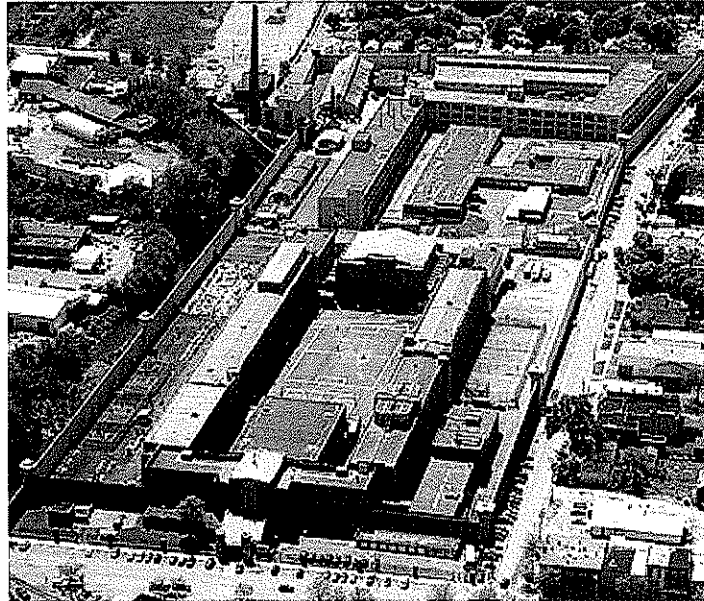
**Construction Cost:** \$750,000



# MEP Systems Replacement

Auburn Correctional Facility

LaBella Associates, PC provided design services for the New York State Office of General Services as part of a term contract. This project included complete replacement of the existing electrical distribution network as well as all existing heating and ventilation equipment and plumbing systems serving two buildings on this campus. These two structures house the Kitchen, Mess Hall, and Auditorium of this site. The total square-footage of the renovation area is approximately 86,000 square-feet. Design was completed in Spring of 2007 and the project is currently in construction.





# NYSOGS - Lanigan Field House

Buffalo, New York

LaBella Associates was retained by New York State Office of General Services to perform a conditions survey for the Lanigan Field House. The roofs were evaluated and recommendations were made for repair. LaBella's report outlined the existing conditions of five roof areas, brick walls and parapet copingstones, and provided recommendations for each.



# Suffolk County Jail Replacement

Yaphank, New York

LaBella Associates is providing detention/correctional and security control design services.

Phase I of this project includes: 600 cells; new booking, housing and visitation; remodeled medical, staff support, jail operations offices, deputy warden's offices; and new mechanical systems.

Phase II includes: 600 additional cells; medical/health services; sheriff's administration; additional staff support; vocational and programming space; kitchen remodeling; additional jail operations space; and additional mechanical space.

**Estimated Construction Start:** 2009

**Construction Cost:**

Phase I: Approx. \$130,000,000

Phase II: Approx. \$150,000,000

**Square Footage:**

Phase I: Approx. 400,000

Phase II: Approx. 400,000

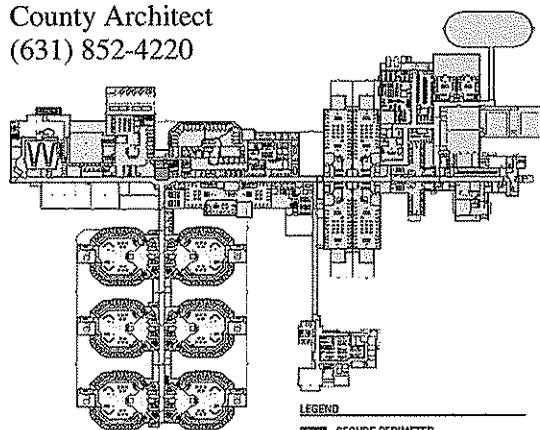
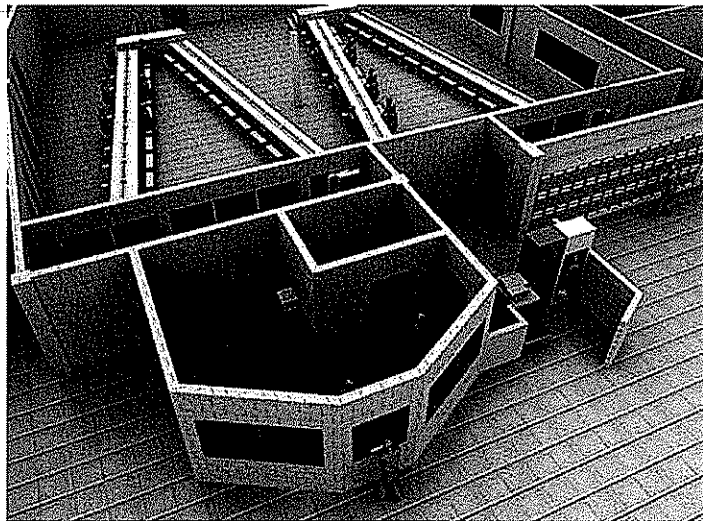
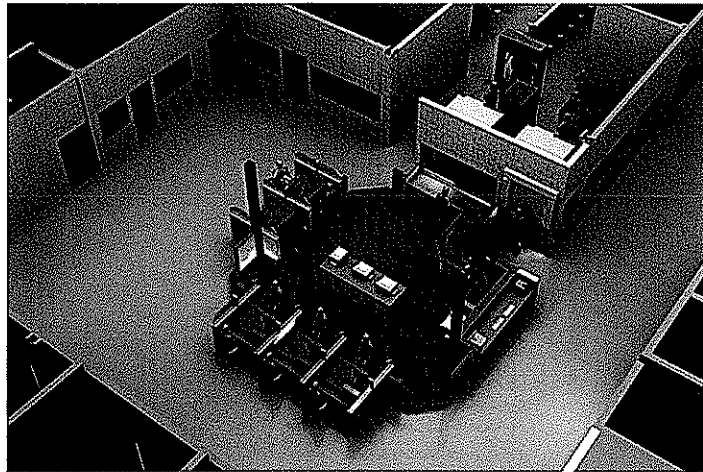
**Supervision:** Direct

**Reference:**

Tedd Godek

County Architect

(631) 852-4220



# Steuben County Public Safety Building

Bath, New York

A 53,300 square foot addition and renovation to the Steuben County Public Safety Building in Steuben County, New York was designed by LaBella Associates, P.C.

The addition includes a 96 cell housing facility with 25% double cells, a new laundry facility, and an expanded vehicle intake garage. The housing facility addition has covered outdoor recreation yards and the addition site layout allows for greater security at the outdoor recreation yards.

The interior renovations cover many support functions to accommodate the increased inmate and staff population including kitchen, visitation, booking, law library, G.E.D., and many others.

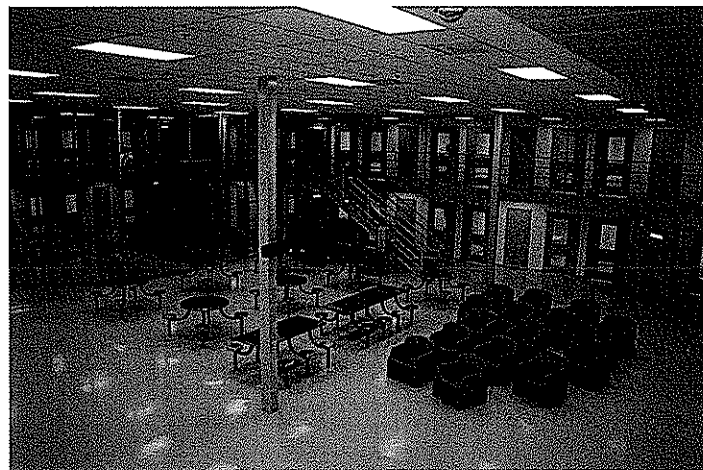
The facility was constructed using reinforced concrete foundations, precast concrete modular cells, reinforced masonry walls with masonry veneer, precast concrete plank and structural steel framing.

**Completion Date:** 2007

**Construction Cost:** \$10.6 million

**Contact:**

Mark Alger  
County Administrator  
(607) 776-9631



# Monroe County Jail Renovations

Rochester, New York

In parallel with the design of the five-story jail addition, space inside the existing jail was renovated to provide centralized facilities for inmate visits and security control for the entire complex.

The design of this addition was completed while maintaining 24 hour-per-day jail operations.

Renovation work included a central control suite, contact and non-contact visitation facilities for 60 inmates, existing elevator upgrades, and the construction of a correction officer dining room.

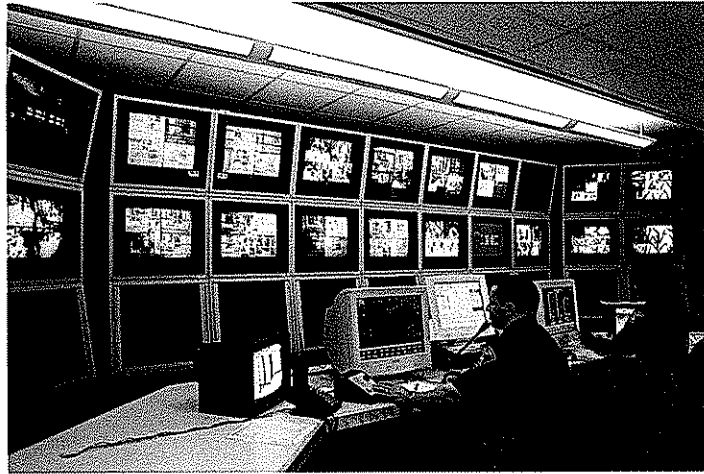
**Construction Complete:** 2002

**Construction Cost:** \$2,500,000

**Square Footage:** 17,500

**Contact:**

Sheriff Patrick O'Flynn  
Monroe County Sheriff's Office  
130 South Plymouth Avenue  
Rochester, NY 14614  
(585) 753-4178



# Monroe County Jail Expansion

Rochester, New York

Following an intensive Master Plan Study, members of LaBella Justice Design Group were retained to design a five-story addition to the existing facility which housed 1,500 inmates. The expansion created space for an additional 424 cells, enhanced circulation, and provided housing for new support services.

The design of this addition was completed while maintaining 24 hour-per-day jail operations.

Background — In 1996, Monroe County employed LaBella members to conduct a master plan study to determine their current and long-term jail and correctional system needs, and to identify opportunities to address those needs.

The Master Plan Study included services such as an assessment of inmate population, staffing, program, site options, cost options, renovation options, and a review and comment on the County's alternative to incarceration program.

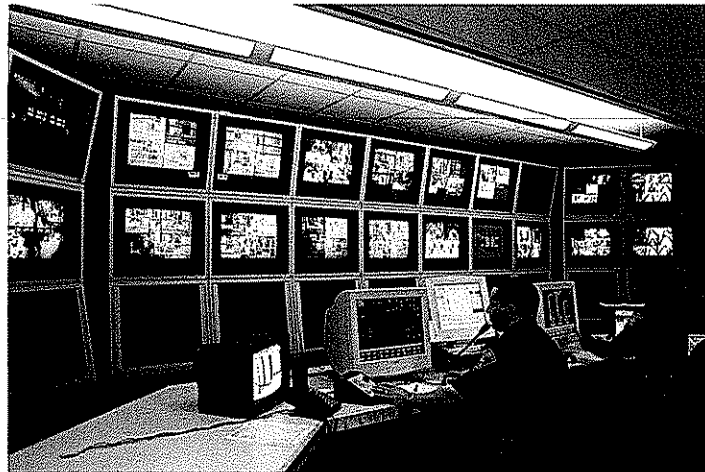
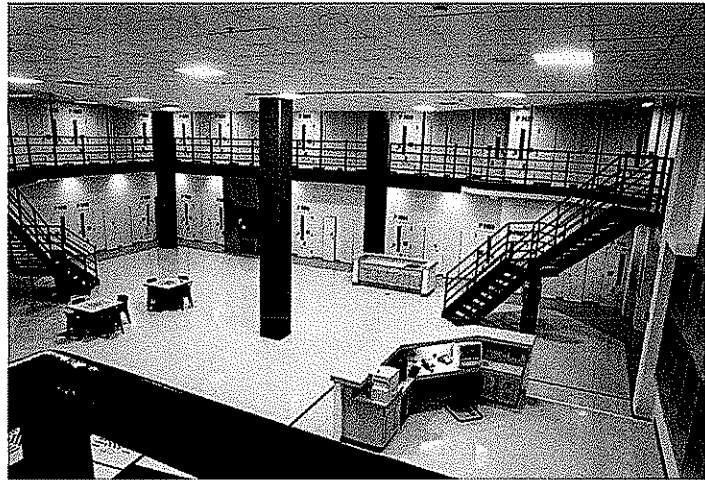
**Construction Complete:** 2002

**Construction Cost:** \$53,000,000

**Square Footage:** 220,000

**Contact:**

Sheriff Patrick O'Flynn  
Monroe County Sheriff's Office  
130 South Plymouth Avenue  
Rochester, NY 14614  
(585) 753-4178



# Monroe County Correctional Facility

Rochester, New York

LaBella Associates has completed three projects at the Monroe County Correctional Facility.

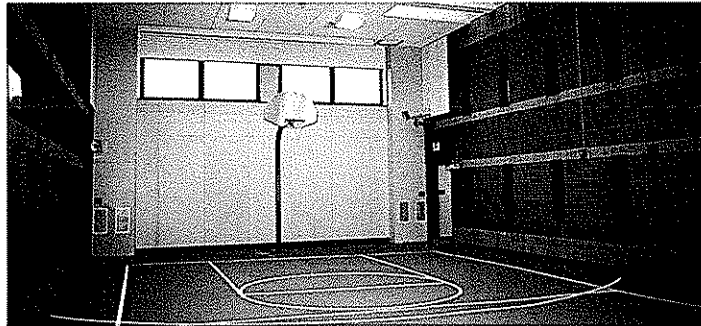
## Modular Housing Units

The County decided to construction two 50-bed dormitory style male housing units that could be almost completely separated from the main population for the purpose of housing and treating the incarcerated drug and alcohol sentenced population. The program included housing areas, officer control stations, inmate counseling rooms, group room, outdoor recreation, and professional staff offices. With this growing population and the desire to not board-out any inmates the challenge was to design and construction these units as quickly as possible. The LaBella Criminal Justice team worked with the County and came up with the idea of designing and constructing permanent modular housing units that could be constructed off-site while the site work was being done and then craned into place. From the start of design to the completion of construction the project was accomplished in about 10 months.



## Inmate Recreation Areas

Previously, the inmates had to be moved one unit at a time to a common recreation facility because the existing recreation spaces attached to the units were constructed as low-security and were an escape risk. Our team came up with a plan to enclose the existing recreation spaces with a maximum security enclosure while maintaining the requirement to provide the inmates with natural light and fresh air. This solution de-centralized recreation activities again, which allowed less movement of inmates and better supervision. The design included a new indoor/outdoor recreation space, new floor surface, maximum security mesh and bars, and improved security and control features.



## Inmate Visitation Space

With a population growing from the original 200-bed facility to now housing about 500 inmates, the existing visitation area was too small to continue to serve the needs of the facility. The LaBella Criminal Justice Design Team worked with the County to come up with a design that would double the size of the visitation area, provide more secure contact visit station, and increase the surveillance of the inmates. To construct the improvements in-place and provide for no down-time, a temporary visitation area was design and constructed as part of this project.



## Contact:

Sheriff Patrick O'Flynn  
(585) 753-4178

# Delaware County Public Safety/Correctional Facility

Delhi, New York

The challenge of this project was to design a new, 100 cell direct supervision facility on a tight site. The building utilized the exterior envelope as the maximum security barrier so that this facility did not require a perimeter security fence. All exterior recreation yards are nested within the complex and not outside the secure building perimeter. The project consists of a new sheriff's administration/probation office, an emergency management office, and space for the STOP-DWI coordinator.

## Reference:

Sherriff Thomas Mills  
(607) 746-2336



# Chenango County Correctional Facility

Norwich, New York

The challenge of this project was to design a 129 bed (150 bed capacity) Direct Supervision facility on a narrow hillside site. The building utilized the exterior envelope as the maximum security barrier so that this facility did not have to have a perimeter security fence. All exterior recreation yards are directly connected to each housing unit to minimize inmate movement.

In addition to the functions of a PSB, the project incorporates a defense training area, a full maintenance garage, and a kitchen that is shared with the County Office of the Aging meals program. Multi-purpose training rooms have also been added to provide the necessary in-service training onsite. The project also includes a new state-of-the-art E911 Communications Center.

**Construction Completed:** 2004

**Total Gross Space:** 127,700 s.f

**Construction Costs:** \$19,679,000

**Additional Space for Maintenance Garage:** \$370,000

**Additional Space for Defense Training:** \$162,000

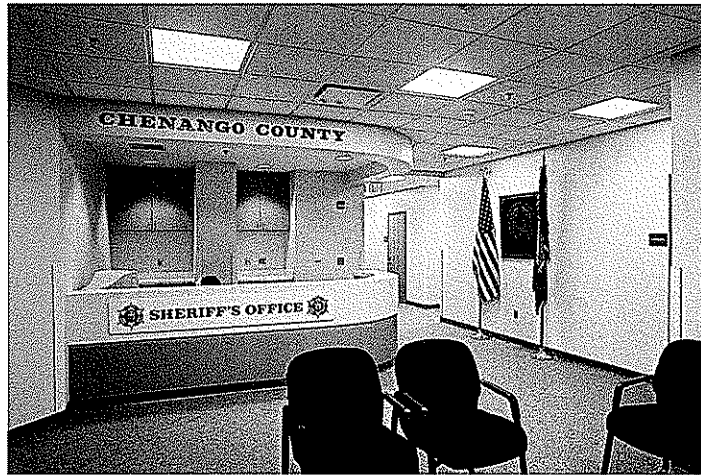
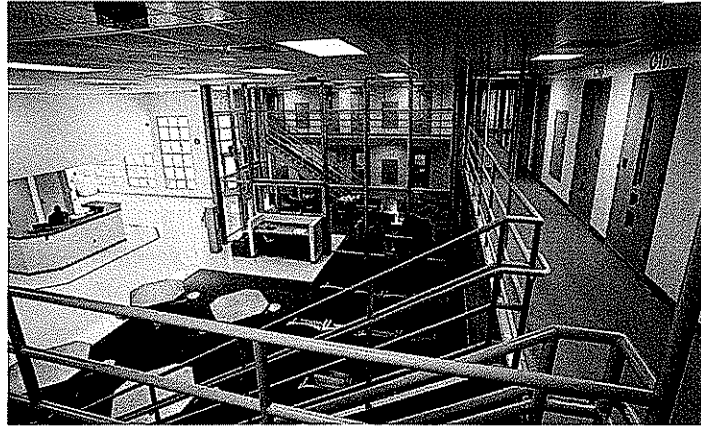
**911 Communications and four towers:** \$2,550,000

**Project Related Cost Costs:** \$3,239,000

**Total Project Costs Bid 2004:** \$26,000,000

**Reference:**

Sheriff Thomas Loughren  
Chenango County Jail  
14 W. Park Place  
Norwich, NY 13814  
(607) 334-2000

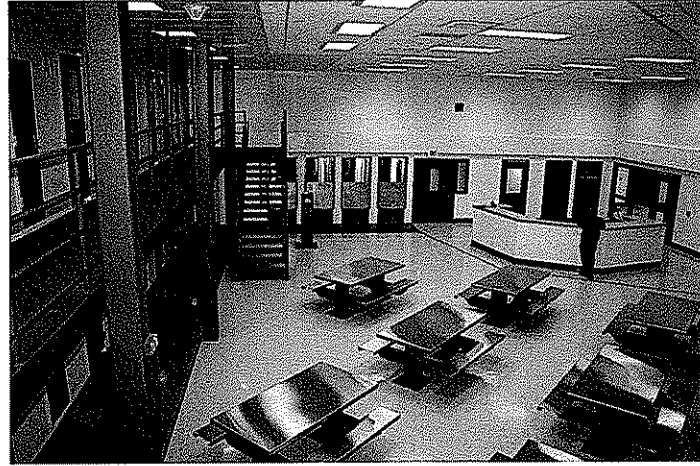




# Chautauqua County Jail

Mayville, New York

Centered in downtown Mayville New York, the only option for this County was to build the facility vertically. The design of this addition needed to be done without shutting down the existing 24 hour-per-day jail operations. Prior to the decision to provide an addition, the LaBella Associates Criminal Justice Design Group conducted a comprehensive study to asses the existing jail, security level, and to make recommendations on options on how to proceed.



Phase I of this project included two 48-bed Housing units with the expansion capability of building and two additional 48-bed units on top. The program also included new core areas of Booking, Holding, Kitchen, Property, and a new Master Control Room. This addition is directly connected to the existing Jail to form one complex.



As a bid alternate, the project also included additional Sheriff Administration space for Road Patrol, Investigations, Evidence, Interview and the SCUBA unit.



**Completion Date:** 2006

**Construction Cost:** \$14.5 million

**Contact:**  
Sherriff Joseph Gerace  
(716) 753-4900

# Warren County Public Safety/Correctional Facility

Lake George, New York

Facility incorporates a blend of linear, dorm, and direct supervision housing units. Constructed next to the County Office Complex and near residential and commercial areas of Lake George, this facility was designed to blend into the community. Part of this blending utilized the exterior envelope as the maximum security barrier so that this facility did not require a perimeter security fence.

After a study phase, which included a population assessment, programming, concept plans, estimates, projections, and staff efficiency review, Warren County decided to build a new facility.

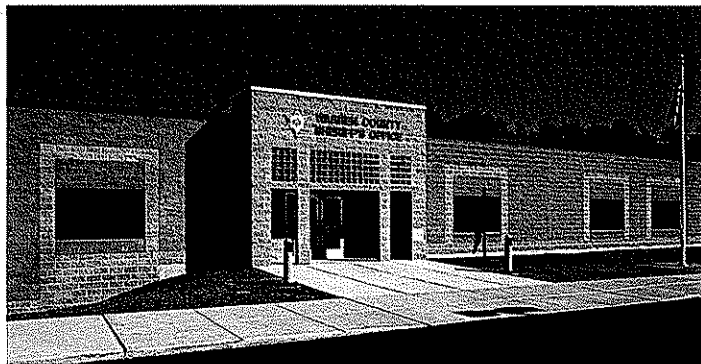
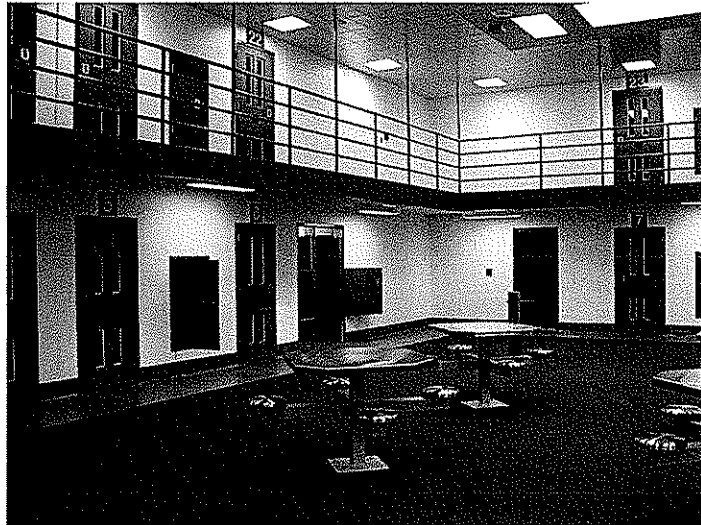
**Construction Complete:** 2004

**Construction Cost:** \$24,000,000

**Square Footage:** 116,000

**Reference:**

Sheriff Nathan York  
Warren County Municipal Center  
1340 State Rte. 9  
Lake George, NY 12845-9803  
(518) 743-2500



# Cayuga County Public Safety/Correctional Facility

Auburn, New York

This 62,000 s.f. addition incorporates four direct supervision housing units, one of which was designed to be a secure forensic unit. Connected to the existing 98-cell linear/dorm jail, this addition gives the Sheriff a complete variety of housing styles. The exterior envelope is the maximum security barrier and the windows are made of security glass blocks.

The addition includes:

- Mental health/forensic behavioral services
- Kitchen
- Laundry
- Visitation
- Medical
- Administrative services

**Construction Completed:** 2000

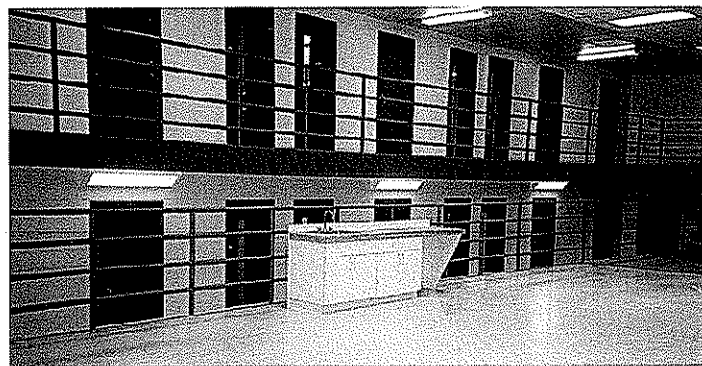
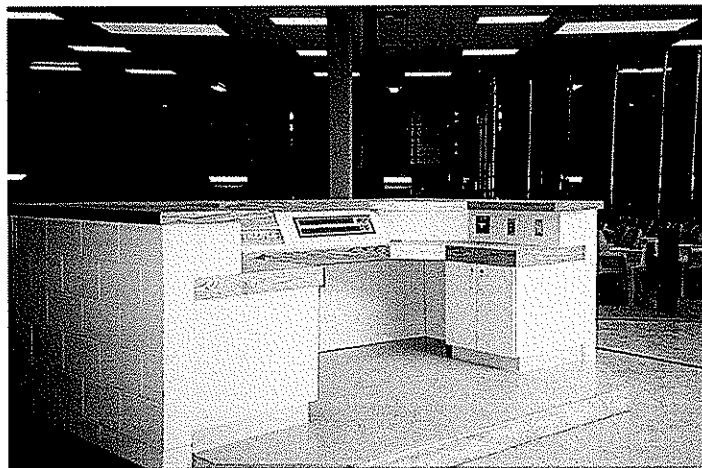
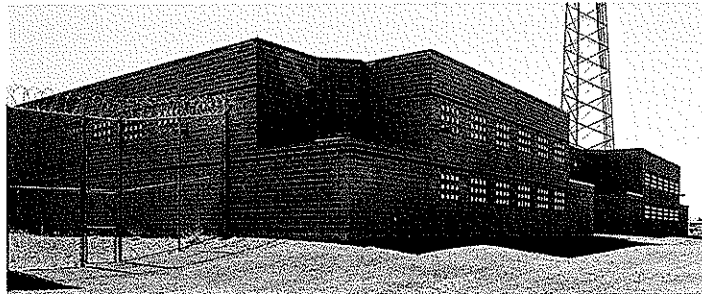
**Total Capacity:** 120

**Supervision:** Direct

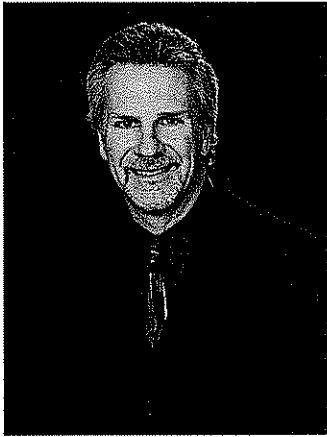
**Construction Cost:** \$12.8 million

**Contact:**

James Taber  
Jail Administrator  
(315) 253-3057



# Robert A. Healy, AIA



## Education:

- SUNY Alfred:  
Associates Degree  
Architectural  
Technology
- Syracuse University:  
Bachelor of  
Architecture
- Harvard University  
Graduate School of  
Design: Public Library  
Planning & Design,  
Theater Planning &  
Design

## Certification/Registration:

- Registered Architect,  
New York
- Registered Architect,  
Pennsylvania

## Professional Affiliations:

- American Institute of  
Architects, Rochester  
Chapter – President  
2009, 2001
- National Council of  
Architectural  
Registration Boards

Mr. Healy is Senior Vice President and Director of the Architecture Division for LaBella Associates, P.C. He has extensive experience in the design and management of large, complex architectural projects. His responsibilities have included programming, site studies, master planning, design, project team management, consultant coordination, contract documentation preparation, and construction administration.

Recognized in past projects for commitment to excellence, his resume includes award-winning projects for urban design, architecture, and interior space planning.

## Key Projects:

- **Sullivan County Jail, Monticello, NY**  
Principal in Charge for population analysis, program needs assessment and site selection for a 300-400 bed jail and public safety building. Total project cost of \$75 million.
- **Steuben County Jail, Bath, NY**  
Principal in Charge for the \$16 million jail expansion which includes a 96 cell housing pod addition with a 120 bed double cell option. The project includes a 45,000 s.f. addition and renovation to 10,000 s.f.
- **Suffolk County Jail Replacement, Yaphank, NY**  
Principal in Charge for the \$280 million, 800,000 s.f. jail providing 1,200 cells.
- **Saratoga Springs Public Safety Building, Saratoga Springs, NY**  
Principal in Charge for a feasibility study to determine the ideal size and use program for the new facility.
- **Monroe County Public Safety Laboratory, Rochester, NY**  
Principal in Charge for a new \$19 million, four-story, 45,000 s.f. crime laboratory.
- **Water Bureau Operations Center, Rochester, NY**  
Principal in Charge for a new 78,000 s.f. LEED Gold Certified facility.
- **Town of Candor Highway Department, Candor, NY**  
Principal in Charge for program evaluation and preliminary design.
- **Honeoye Falls/Mendon Ambulance Facility, Honeoye Falls, NY**  
Principal in Charge for design of new 7,450 s.f. volunteer ambulance facility.
- **City of Hornell Public Safety Building, Hornell, NY**  
Project Manager for the addition and renovation of an historic facility.

# Timothy J. Cripe, RA, LEED AP



Mr. Cripe's outstanding project management skills derive from his 25 years of experience of designing and coordinating large, complex projects ranging from \$15-\$150 million in construction cost. Not only has he served as Project Manager for significant individual projects, but also for multiple work assignments under statewide term contract agreements.

## Key Projects:

- **NYS Office of General Services Architectural Term Contract**  
Project Manager for a three-year, \$2 million statewide term contract. Current assignments include projects as the Camp Cass Training Center, Albion Correctional Facility, and Ulster Correctional Facility.
- **NYS Office of General Services, Residential Mental Health Unit Architectural Services Term Contract**  
Project Manager for a three-year, \$2 million term contract to provide architectural services for Residential Mental Health Units (RMHUs) at state correctional facilities. Current assignments include RMHUs at the Five Points and Coxsackie Correctional Facilities.
- **Marcy Correctional Facility RMHU, Marcy, NY**  
Project Manager for the design of a \$20 million, 58,000 s.f., LEED Silver RMHU building addition to an existing Special Housing Unit.
- **Greenhaven Correctional Facility, Observation Cell Units, Stormville, NY**  
Project Manager for a major renovation to an existing Observation Cell Unit to include new observation cells that meet current NYSDOCS standards, as well as dorm and dayroom areas, nursing and medication prep facilities, and office spaces for mental health and medical staff.
- **Greenhaven Correctional Facility, Intermediate Care Program (ICP) Expansion, Stormville, NY**  
Project Manager for a major renovation to an existing inmate housing unit and adjacent program unit.
- **Upstate Correctional Facility, Malone, NY**  
Project Manager for a NYS Department of Correctional Services 1,500-bed maximum security prison, 780,000 SF, completed in 1998 for a cost of \$130 million.
- **Five Points Correctional Facility, Romulus, NY**  
Project Manager for a NYS Department of Correctional Services 1,500-bed maximum security prison, 900,000 SF, completed in 2000 for a cost of \$150 million.

## Education:

- University of Illinois:  
Bachelor of Architecture
- University of Illinois:  
Master of Architecture

## Certification/Registration:

- Registered Architect,  
New York
- LEED Accredited  
Professional
- NCARB Certified

## Professional Affiliations:

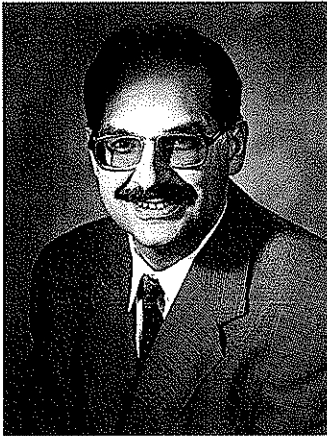
- American Correctional  
Association
- American Jail  
Association
- New York State  
Sheriff's Association

## Timothy J. Cripe, RA, LEED AP

---

- **Oneida Correctional Facility, Cook Chill Expansion, Rome, NY**  
Project Manager for \$15 million expansion and renovation of DOCS Central Cook Chill Food Production Facility, completed 2004.
  
- **New York State Department of Correctional Services**  
Project Manager for various additions and renovations at the following facilities:
  - Wende Correctional Facility
  - Attica Correctional Facility
  - Albion Correctional Facility
  - Buffalo Correctional Facility
  - Mohawk Correctional Facility
  - Ulster Correctional Facility
  - Elmira Correctional Facility
  - Eastern Correctional Facility
  - Taconic Correctional Facility
  - Greenhaven Correctional Facility
  - Monterey Shock Incarceration Facility
  - Groveland Correctional Facility
  - Orleans Correctional Facility
  - Southport Correctional Facility
  - Sullivan Correctional Facility
  - Midstate Correctional Facility
  - Sing Sing Correctional Facility
  - Oneida Correctional Facility
  - Downstate Correctional Facility
  - Marcy Correctional Facility
  - Cape Vincent Correctional Facility
  - Bedford Hills Correctional Facility
  
- **University Hospitals of Cleveland, Cleveland, OH**  
Project Manager for the following: Women's Ambulatory Services, Breast Center, Ante Partum/Women's Surgery, Department of OB/GYN Office Suite, Lakeside Hospital - Circulation Upgrades/Corridor Renovations, Primary Care Center.
  
- **Masonic Home Skilled Nursing Facility, Utica, NY**  
Project Manager for major expansion and renovation project.
  
- **Sisters of Charity Hospital, Buffalo, NY**  
Project Manager for major modernization project.
  
- **Geneva General Hospital, Geneva, NY**  
Project Manager Century II Major Addition and Renovations.
  
- **St. John's Home Skilled Nursing Facility, Rochester, NY**  
Project Manager for 120-bed Addition and Major Renovations.
  
- **Park Ridge Hospital, Rochester, NY**  
Project Manager for Adult Day Care Center.

# Mark E. Kukuvka, AIA



## Education:

- University of Cincinnati  
College of Design,  
Architecture, Art, and  
Planning: Bachelor of  
Architecture
- SUNY Delhi  
Agricultural and  
Technical College:  
AAS, Architectural  
Technology

## Certification/Registration:

- Registered Architect,  
New York

## Professional Affiliations:

- American Institute of  
Architects
- American Institute of  
Architects: Committee  
on Architecture for  
Justice
- American Jail  
Association
- Construction  
Specifications Institute:  
Rochester Chapter

Mr. Kukuvka has 19 years of experience specializing in the programming, design, and project management of county projects and criminal justice facilities. Serving as client manager, Mr. Kukuvka serves as client liaison and oversees quality control and completion of key design elements.

## Key Projects:

- **Suffolk County Jail Replacement Facility at Yaphank, NY**  
Correctional Consultant for a \$280 million, 800,000 s.f. jail providing 1,200 cells.
- **Monroe County Jail Expansion, Rochester, NY**  
Client Manager for a \$53 million, 220,000 s.f., 400 cell jail expansion.
- **Monroe County Master Plan, Rochester, NY**  
Sr. Project Manager for the master plan and study of Sheriff's Headquarters and entire Jail and Correctional System.
- **Warren County Correctional Facility and Public Safety Building**  
Client Manager for a new \$27 million, 128,400 s.f., 154 bed facility.
- **Broome County Jail and Public Safety Building**  
Project Manager for a new \$35 million, 225,000 s.f., 400 cell facility.
- **Delaware County Correctional Facility and Public Safety Building**  
Client Manager for a new \$23.5 million, 110,000 s.f., 100 bed facility.
- **Chenango County Correctional Facility and Public Safety Building**  
Client Manager for a new \$26 million, 127,700 s.f., 129 bed facility.
- **Chautauqua County Jail Expansion**  
Client Manager for a \$14.5 million, 64,800 s.f. jail expansion.
- **Cayuga County Jail Addition**  
Client Manager for a \$12.8 million, 62,000 s.f. jail addition.
- **Schoharie County Jail and Public Safety Building**  
Project Manager for a new \$7.7 million, 80,000 s.f., 80 bed facility.
- **Tioga County Jail and Public Safety Building**  
Project Manager for a new \$8.7 million, 73,000 s.f. facility.
- **Steuben County Jail and Public Safety Building**

## Mark E. Kuvka, AIA

---

Project Manager for a new \$11.5 million, 100,000 s.f., 150 bed facility.

- **Steuben County Jail Pod Addition**  
Project Manager for a 53,300 s.f., 96 cell addition and renovation.
- **Cattaraugus County Jail Renovations**  
Project Manager for renovations extending jail capacity for another 5 to 8 years.
- **Franklin County Jail and Public Safety Building**  
Project Manager for a new \$7 million, 40,420 s.f., 85 bed facility.
- **Orleans County Jail Renovations**  
Project Manager & Architect for renovations extending usefulness of the jail another 5 to 8 years.
- **Wyoming County Jail and Public Safety Building**  
Project Manager & Architect for a new \$7.3 million, 50,000 s.f., 52 bed facility.
- **Onondaga County Jamesville Correctional Facility**  
Project Manager for a renovation and expansion that included a new dorm unit.
- **Sullivan County Jail, Monticello, NY**  
Project Manager for population analysis, program needs assessment, and site selection for a 300-400 bed jail and public safety building. Total project cost of \$75 million.
- **Clinton County Master Plan Facility Assessment**  
Project Manager & Architect for a \$5.4 million assessment of 14 County buildings.
- **Monroe County Public Safety Laboratory, Rochester, NY**  
Project Manager for a new \$19 million, four-story, 45,000 s.f. crime laboratory.
- **Springs Public Safety Building, Saratoga Springs, NY**  
Public Safety Consultant for a feasibility study to determine the ideal size and use program for the new facility. Project Manager during the design of the resulting 27,000 s.f. facility.
- **Allegany County Facilities Master Plan Study**  
Principal in Charge for study that included existing and future physical space needs of all County administrative agencies, jail cell space, and court system.



# Christopher J. Talarczyk, AIA



Mr. Talarczyk has 22 years of experience in the design, project management, and construction administration of multi-million dollar projects including institutional, corporate, industrial, and educational facilities.

## Key Projects:

- **Suffolk County Jail Replacement**  
Project Architect for the \$280 million, 800,000 s.f. jail providing 1,200 cells.
- **Warren County Correctional Facility and Public Safety Building**  
Project Architect for the new \$27 million, 128,400 s.f., 154 bed facility.
- **Steuben County Jail Pod Addition**  
Project Architect for a 53,300 s.f., 96 cell addition and renovation.
- **Monroe County Jail Expansion, Rochester, NY**  
Project Architect for the \$53 million, 220,000 s.f., 400 cell jail expansion.
- **Monroe County Jail Renovations – Phase 1**  
Project Architect for the renovations to the visitation area of the existing Public Safety Building.
- **Chautauqua County Jail Expansion Needs Survey**  
Project Architect for the review of existing conditions and study determining future needs.
- **Chautauqua County Jail Expansion**  
Project Architect for the \$14.5 million, 64,800 s.f. jail expansion.
- **Chenango County Public Safety Building and Correctional Facility**  
Project Architect for the new \$26 million, 127,700 s.f., 129 bed facility.
- **Delaware County Public Safety Building and Correctional Facility**  
Project Architect for the new \$23.5 million, 110,000 s.f., 100 bed facility.
- **New York State Office of General Services Conditions Assessments**  
Project Architect for conditions assessments for West Seneca, Tupper Lake, and Broome County Developmental Centers.

## Education:

- State University of New York at Buffalo: Master of Architecture
- State University of New York at Buffalo: BPS, Architecture
- State University of New York at Alfred: AAS, Architecture

## Certification/Registration:

- Registered Architect, New York

## Professional Affiliations:

- American Institute of Architects
- Construction Specifications Institute

# Richard W. McClung, PE, LEED AP



## Education:

- University of Waterloo:  
BASC, Mechanical  
Engineering

## Certification/Registration:

- Professional Engineer,  
State of New York
- Professional Engineer,  
State of Delaware

## Professional Affiliations:

- LEED Accredited  
Professional, U.S.  
Green Building Council
- National Fire Protection  
Association –Member
- American Society of  
Plumbing Engineers-  
Member
- American Society of  
Heating, Refrigerating  
& Air-Conditioning  
Engineers- Member

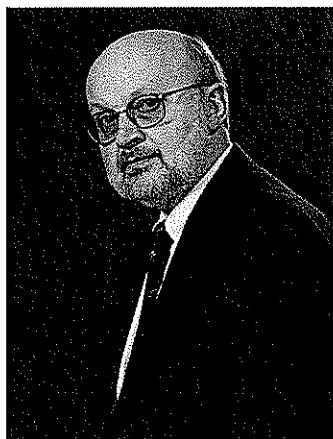
Mr. McClung has been involved in the design and the construction of building mechanical and electrical systems for over 35 years. This experience includes federal, state, institutional, and corrections applications. Project types have included master plans, feasibility studies, budget planning, energy studies, facility conditions evaluations, design documents, bidding, construction administration and management. He has served as Design Engineer, Project Manager, or Principal in Charge. On over 750 projects. Mr. McClung is knowledgeable in a broad range of mechanical systems including HVAC, Plumbing and Fire Protection.

## Key Projects:

- **NYS Office of General Services Term Contracts, Various, NY**  
Project Manager for the management of two term contracts performing administrative and mechanical design functions on projects. This work was worth over \$1 million in design fees and included many successful projects that were completed on budget and within the challenging five-week schedule. Projects included:
  - Monterey Shock Incarceration-Classroom Renovations
  - Clinton Correctional Facility-Kitchen Fan Replacement
  - Gowanda Correctional Facility-Gymnasium Structural Evaluation
  - Mid State Correctional Facility-Fire Alarm Replacement
- **Chautauqua County Jail**  
Senior Mechanical Engineer for the design of heating, cooling, and ventilation for a 120-bed addition for a two-story county jail.
- **Monroe County Jail**  
Senior Mechanical Engineer for design and construction of HVAC systems for heating and cooling of a 400 bed, 122,000 s.f. high rise county jail, including kitchens and heat recovery systems. Systems were a combination of steam and hot water. Design included NYSERDA funding for many energy efficient initiatives.
- **Cayuga County Jail Addition**  
Project Engineer for a \$12.8 million, 62,000 s.f. jail addition.
- **Chenango County Jail and Public Safety Building**  
Project Engineer for a new \$26 million, 127,700 s.f., 129 bed facility.
- **Warren County Correctional Facility and Public Safety Building**  
Project Engineer for a \$27 million, 128,400 s.f., 154 bed facility.
- **Delaware County Correctional Facility and Public Safety Building**  
Project Engineer for a \$23.5 million, 110,000 s.f., 100 bed facility.
- **Cattaraugus County Jail Renovations**  
Project Engineer for renovations extending jail capacity for 5-8 years.

# David R. Reynolds, PE, LEED AP

---



Mr. Reynolds has 25 years of experience in mechanical design for facilities. Mr. Reynolds's experience includes engineering and project management services for projects involving heating, air conditioning, ventilation, humidity control, plumbing and fire protection systems in industrial, commercial and institutional facilities. Projects have included boiler and chiller plants, underground piping systems, dust collection systems, fume hoods systems, telephone equipment room conditioning and production shop and battery room ventilation systems.

## Key Projects:

- **NYSOGS, Collins Correctional Facility, Administration Building**  
Client/Project Manager for the replacement of steam heating system.
- **NYSOGS, Industry Correctional Facility, Roof Top Air Conditioning System and Kitchen Modifications, Industry, NY**  
Client/Project Manager for an air conditioning system at a community building and for kitchen modifications in the dining building.
- **NYSOGS, Lanigan Field House, Buffalo, NY**  
Client/Project Manager for field study and report providing recommended mechanical system renovations to a recreation center.
- **NYSOGS Midstate Correctional Facility Underground Steam Line**  
Client/Project Manager for replacement of steam and condensate lines.
- **NYSOGS Mohawk Correctional Facility Replace Steam Manhole**  
Client/Project Manager for design of pump replacement and all piping serving steam manhole.
- **NYSOGS, Statewide Engineering/Architectural Term Agreement**  
Client/Project Manager for 3 year term agreement to complete approximately 30 projects.
- **NYSOGS, Attica Correctional Facility, Engineering Study for the Special Housing Unit, Attica, NY**  
Client/Project Manager for study to determine the scope and budget for design of heating improvements.
- **NYSOGS, Attica Correctional Facility, Survey and Condition Report, Attica, NY**  
Client/Project Manager for survey and condition report of the domestic water systems for ten campus buildings.
- **NYSOGS, Attica Correctional Facility, Window & Heating System Replacement for Building 17, Attica, NY\***  
Client/Project Manager for window and heating system replacement for Building 17.

## Education:

- Syracuse University:  
BS, Mechanical Engineering
- LeMoyne College: BA,  
Economics

## Certification/Registration:

- Professional Engineer,  
New York
- LEED Accredited  
Professional

## Professional Affiliations:

- American Society of Heating, Refrigeration and Air-Conditioning Engineers
- American Society of Plumbing Engineers

## David R. Reynolds, PE, LEED AP

---

- **NYSOGS, Wende Correctional Facility, Wende, NY**  
Client/Project Manager for design of ventilation system to serve offices and addition of air handling unit with steam coils and controls.
- **NYSOGS, Midstate Correctional Facility M Project, Marcy, NY**  
Client/Project Manager for replacement of underground steam and condensate lines.
- **NYSOGS, Groveland Correctional Facility, Sonyea, NY**  
Client/Project Manager for toilet room and ventilation improvements for inmate residential buildings.
- **NYSOGS, Watertown Correctional Facility, Watertown, NY**  
Client/Project Manager for window replacement project for eleven buildings.
- **NYSOGS, Auburn Correctional Facility, Auburn, NY**  
Client/Project Manager for Program Report and design for \$3.4 million replacement of MEP systems to serve dining hall, kitchen and auditorium.
- **NYSOGS, Clinton Correctional Facility, Dannemora, NY**  
Client/Project Manager for M project involving rehabilitation for the refractory for the boilers serving the power plant.
- **NYSOGS, Camp Georgetown, NY**  
Client/Project Manager for replacement of fuel storage and emergency systems for a minimum security correctional facility energy plant.
- **NYSOGS, Correctional Facility, Lyon Mountain, NY**  
Client/Project Manager for feasibility study for alterations and additions to a minimum security correctional facility maintenance garage.
- **NYSOGS, Division For Youth Facility, Tryon, NY**  
Client/Project Manager for rehabilitation of the dining hall kitchen facilities including boiler replacement in a DFY Facility.
- **NYSOGS, Sullivan Correctional Facility, Sullivan, NY**  
Client/Project Manager for mechanical system renovations and installation of a sawdust collection system.

## Conrad 'Chuck' Lind, PE



### Education:

- Georgia Institute of Technology: BEE, Electrical Engineering

### Certification/Registration:

- Professional Engineer: New York and Pennsylvania

Mr. Lind has nearly 20 years of electrical engineering experience, specializing in design, estimation, specification and field support of various projects. His responsibilities include design of lighting, fire alarm systems, communications and power distribution.

### Key Projects:

- **NYSOGS, Auburn Correctional Facility, Auburn, NY**  
Sr. Electrical Engineer for replacement of MEP systems to serve dining hall, kitchen and auditorium.
- **NYSOGS, Police Headquarters, Oneida, NY**  
Project Manager for the upgrade of the electrical system in the NYS Police headquarters facility.
- **NYSOGS, New Police Headquarters Electrical Conditions Surveys, Various Facilities, NY**  
Sr. Electrical Engineer, provided design of lighting, power distributions and phone / data cable management system modifications for the existing State Police Headquarters at Canandaigua and Batavia. Facility included offices, dwelling areas and vehicle maintenance space.
- **Monroe County Hall of Justice, HVAC System Upgrades, Rochester, NY**  
Sr. Electrical Engineer for building system upgrades as part of various renovations throughout the Hall of Justice
- **Monroe County, Greater Rochester International Airport Safety & Security System Upgrades, Rochester, NY**  
Sr. Electrical Engineer, provided master plan and bid specifications at the terminal and related facilities. The systems included the Fire Detection and Alarm system, the CCTV surveillance and monitoring system, security and card access system and related photo ID system, and general physical and operational enhancements to the Airport communications center for ergonomics and security.
- **University at Buffalo, North and South Campuses, Fire Alarm System Replacement – Various Buildings, Buffalo, NY**  
Project Manager for the complete replacement of the fire detection and alarm systems in a five buildings on the North campus and four buildings on the South Campus.
- **University at Buffalo – South Campus, Heating and Plumbing Replacement – Parker and Harriman Hall, Buffalo, NY**  
Sr. Electrical Engineer for performing field work and providing electrical support for the conversion of the heating system from steam to hot water and incorporating replacement of each buildings main 208-volt switchboard at the campuses request.

# Joong C. Lee, PE

Principal

---

## Education

PhD Study, Polytechnic University, Brooklyn, NY, 1980-84, Structural Engineering

Advanced Graduate Study, New York University, 1966-70, Structural Engineering

MS, University of Minnesota, Minneapolis, MN, 1964, Structural Engineering

BS, Oklahoma State University, Stillwater, OK, 1962, Architectural Engineering

## Registration: Professional Engineer

NY (046192) 1970; CT (PEN.0016866) 1990; NJ (24GE03520800) 1991; PA (PE042150R) 1991;

DC (PE9442) 1991, TX (79894) 1994; NCEES (9362) 1990

## Brief Professional History

Principal (1990), Weidlinger Associates, Consulting Engineers (1968- )

Project Engineer, Haines, Lundberg & Waehler, Architects, New York, NY (1964-68)

## Years of Experience

Weidlinger: 41; Other Firms: 4

## Summary of Experience

Mr. Lee has been principal in charge for the design and management of many public facilities. He has led a wide range of award-winning projects, from convention centers and stadiums, to hospitals and transportation facilities. He has over 40 years of experience and he has participated in the design of many major high rise structures.

## Representative Project Experience

### *Government Buildings*

Marcy Correctional Facility Residential Mental Health Unit, Marcy, NY

Coxsackie Correctional Facility Residential Mental Health Unit, Coxsackie, NY

Five Points Correctional Facility Residential Mental Health Unit, Romulus, NY

Hudson Valley Transportation Management Center, Hawthorne, NY

Emanuel Celler U.S. Federal Courthouse Modernization, Brooklyn, NY

U.S. Embassy Complex, Seoul, Korea

U.S. Embassy Complex, Tunis, Tunisia

U.S. Post Office, Ridgewood, NY

NYPD 44<sup>th</sup> Precinct Headquarters, Bronx, NY

Police Service Area (PSA) No. 6, Bronx, NY

Police Service Area (PSA) No. 8, Bronx, NY

Police Service Area (PSA) No. 9, Flushing, NY

New York City Police Memorial, New York, NY

Charles Dana Discovery Center at Harlem Meer in Central Park, New York, NY

Rikers Island, Evaluation of Prison Structures, New York, NY



**WEIDLINGER ASSOCIATES® INC**

CONSULTING ENGINEERS

# Amr I. Aly, PE, LEED® AP

Associate

---

## Education

MPhil, Columbia University, New York, NY, 1996

MSCE, The Cooper Union, New York, NY, 1993

BSCE, Cairo University, Cairo, Egypt, 1989

## Registration

Professional Engineer: NY (079095) 2001

LEED® Accredited Professional, 2009

## Brief Professional History

Associate, Weidlinger Associates Consulting Engineers (1993- )

Design Engineer, AR Consulting Firm (1989-90)

## Years of Experience

Weidlinger: 16; Other Firms: 0

## Affiliations

American Society of Civil Engineers

## Summary of Experience

Mr. Aly has more than a decade of experience in the structural design of structures. He has extensive experience in a wide variety of projects including conventional and housing projects. He is extremely knowledgeable in the development of repair details for a variety of steel and concrete structures. Mr. Aly has completed analyses for seismic and blast resistance on several projects and has also worked on a range of geotechnical engineering projects.

## Representative Project Experience

### *New Design Projects*

Coxsackie Correctional Facility Residential Mental Health Unit, Coxsackie, NY

Five Points Correctional Facility Residential Mental Health Unit, Romulus, NY

Marcy Mental Health Unit, Marcy, NY

City Center, New York, NY

Tomorrow Square Tower, Shanghai, China

Dongbu Securities Headquarter Building, Seoul, Korea

Vision City Towers and Dome, Kuala Lumpur, Malaysia

Rose Center for Earth and Space North Side Improvements, AMNH, New York, NY

Astoria Houses Boxing Gymnasium, Queens, NY

Metropark Parking Facility, Iselin, NJ

Salt Domes, Hampton Bays, NY

Riverside South Park Landscape Structures, New York, NY



**WEIDLINGER ASSOCIATES® INC**  
CONSULTING ENGINEERS

# Margaret Hunter

Structural Engineer

---

## **Education**

MSCE, Columbia University, New York, NY, 2007

BSCE, Tufts University, Medford, MA, 2006

## **Registration: Engineer in Training**

MA 2006

## **Brief Professional History**

Structural Engineer, Weidlinger Associates, New York, NY (2007- )

Civil Engineering Intern, WD Partners, Waltham, MA (2006)

Design Build Department Intern, EllisDon Construction Contractors, Mississauga, Canada (2005)

## **Years of Experience**

Weidlinger: 2; Other Firms: 0

## **Representative Project Experience**

*Design Projects (New Buildings)*

Coxsackie Correctional Facility Residential Mental Health Unit, Coxsackie, NY

Five Points Correctional Facility Residential Mental Health Unit, Romulus, NY

Marcy Residential Mental Hospital, Marcy, NY

Duke University Medical System and Health Center, Durham, NC

City Centre 47<sup>th</sup>/48<sup>th</sup> Street, New York, NY

Cornell North Martha Van Rensselaer Hall, Ithaca, NY

