

Statement of Qualifications  
for:



Denmar Correctional Center  
August 20, 2009



# Table of Contents

# Statement of Qualifications

for



## WHO WE ARE...

- Tab 1 History and Philosophy
- Tab 2 Professional Services and Quality Assurance

## PROVEN PERFORMANCE...

- Tab 3 Personnel
- Tab 4 Correctional Experience
- Tab 5 Other Projects

### Denmar Correctional Center

## DELIVERING RESULTS...

- Tab 6 Award Winning Design
- Tab 7 Client Recommendations

RECEIVED

2009 AUG 19 PM 2:02

WEST VIRGINIA  
PURCHASING  
DIVISION



Steve Branner, AIA, NCARB, Principal  
steve@zmm.com



222 Lee Steet West  
Charleston, West Virginia 25302  
304.342.0159 voice • 304.325.8114 fax

ARCHITECTS & ENGINEERS

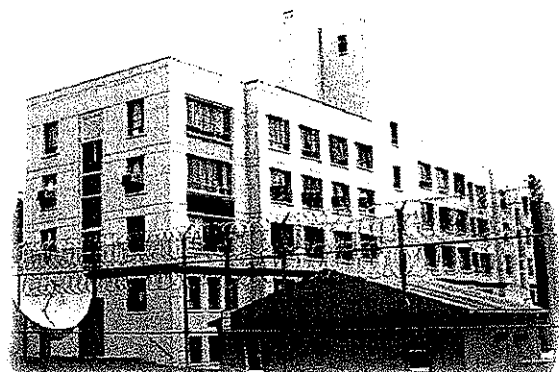
### Professional Architectural & Engineering Services

Adam R. Krason, AIA, LEED AP, Principal  
ark@zmm.com



222 Lee Steet West  
Charleston, West Virginia 25302  
304.342.0159 voice • 304.325.8114 fax

ARCHITECTS & ENGINEERS



August 20, 2009



ARCHITECTS & ENGINEERS

August 18, 2009

Mr. John Abbott  
Purchasing Division  
P.O. Box 50130  
Charleston, WV 25305-0130

**Subject: Denmark Correctional Center – Electrical Service Upgrade COR1423**

Dear Mr. Abbott:

ZMM is pleased to submit the attached information to demonstrate both our experience and our capability to provide professional electrical engineering design and construction administrative services to upgrade the electrical service for the Denmark Correctional Center. We are confident that our experience working at the Denmark Correctional Center, as well as our electrical engineering experience will make ZMM a great partner for the West Virginia Division of Corrections.

Since 1959, ZMM has been consistently recognized as one of the largest, fully integrated architecture and engineering firms in the State of West Virginia. An organization of creative professionals with the common interest of working with our clients to design and engineer innovative and cost effective buildings, ZMM has worked on a variety of electrical service upgrades throughout the State of West Virginia – most recently ZMM designed the electrical service upgrade to State Office Buildings 5, 6, & 7 at the Capitol Complex.

Thank you for taking the time to review the attached brochure that outlines detailed information regarding the history, services, personnel, experience, and qualifications of ZMM. We look forward to meeting with you in the near future to review our qualifications, and to discuss your project in more detail.

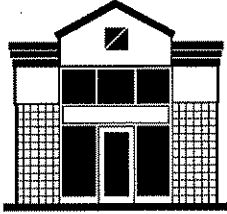
Respectfully submitted,

ZMM, Inc.

A handwritten signature in black ink, appearing to read 'A.R. Krason', written over a horizontal line.

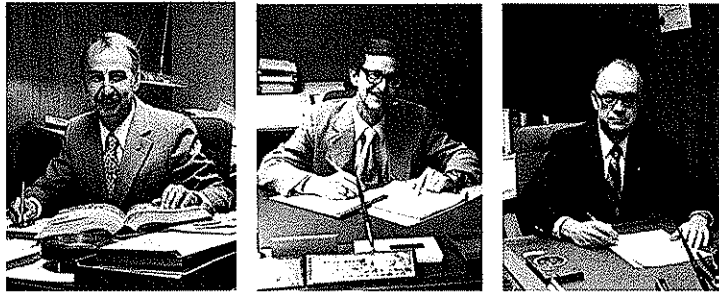
Adam R. Krason, AIA, NCARB, LEED-AP  
Vice President

cc: File



## History & Philosophy of ZMM

Ray Zando, Ken Martin and Monty Milstead established the **Charleston, West Virginia** based Architectural and Engineering firm of Zando, Martin and Milstead in 1959 with a staff of five people. The firm obtained an early foothold in the professional services sector in the state and grew in both size and stature. Mr. Steven Branner, a recent graduate of the University of Cincinnati, joined the firm in 1967 as a project architect. Mr. Robert Doeffinger obtained a B. S. degree in Mechanical Engineering from West Virginia University and an M. S. degree in Architectural Engineering from The Pennsylvania State University before joining the firm in 1976.

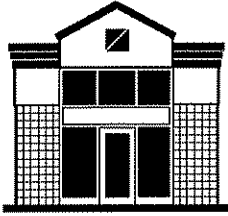


Mr. Zando, Mr. Martin and Mr. Milstead, reaching retirement age, transferred the ownership of the firm to Mr. Branner and Mr. Doeffinger in 1986 and they guided and expanded the firm to its present size of approximately 35 people. Since then, Dave Ferguson, Rod Watkins, and Adam Krason have joined in ownership of the firm.



The philosophy of ZMM was established early on by the original partners and continues today due to careful selection of contemporaries. At ZMM we are proud of our heritage of fine architecture, engineering and client service. This pride shows in everything we do, from the way we interface with clients to the way we deliver our designs.

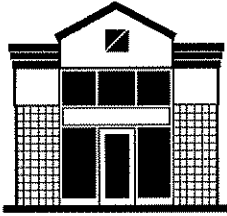




## History & Philosophy of ZMM

Since the beginning, ZMM has been dedicated to the integrated approach to building design. The inclusion of engineering services (civil, mechanical, electrical and structural), as well as interior design, makes ZMM unique among architectural firms and fulfills the needs of clients for single point responsibility. More importantly, an integrated approach provides better coordinated, accurate, and concise documents. ZMM's commitment to clients is to provide the highest quality professional services available. In order to maintain this high level of quality, we strictly conform to a Quality Assurance Program, a unique feature of ZMM.

We work hard at staying generalists, while, by virtue of maintaining a practice for over forty years, having extensive experience in different building types. We approach each project as a unique opportunity and execute each design accordingly. Nothing is done without our full, professional attention. ZMM has a demonstrated record of success in the specialization of architecture and engineering.

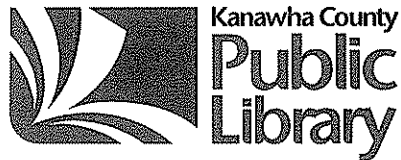


## History & Philosophy of ZMM

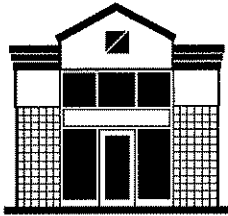
### COMMUNITY SUPPORT

In addition to our design efforts, **ZMM** is supportive of institutions and organizations that contribute to the cultural and educational landscape in West Virginia.

**ZMM** offers financial support to several community and state-wide institutions which reflect the superior quality that we strive to achieve on each of our projects. The following organizations also impact the educational environment through their support of local artisans, performances, broadcasts, and community service:



West Virginia Symphony Orchestra



# Professional Services

Since its inception, ZMM has been dedicated to the integrated approach to building design (providing full architectural and engineering services in-house) which is unique to architectural firms of our size. Our past successful experience demonstrates that providing multi-disciplined services within one organization results in a fully coordinated project. ZMM has the qualified professionals available to provide services throughout the duration of a project from the initial planning phases through post-occupancy evaluations and beyond.

Additionally, ZMM is constantly working to improve the services we offer by addressing emerging and evolving trends that impact the design and construction market. ZMM has five LEED accredited Professionals on staff to address the needs of our clients who are interested in designing buildings that meet the US Green Building Council's standards. This continues ZMM's active implementation of sustainable design principles on our projects.

**ZMM offers all of the following professional services within our organization:**

- PRE-DESIGN**
- Educational Facility Planning
- Programming
- Space Planning
- Feasibility Studies
- Existing Building Evaluation
- Site Evaluation and Analysis
- Master Planning
- Construction Cost Estimating

Executive Summary		Index (Pages)
<b>National Guard Bureau</b> Area (NSF)		
Planning	11,485	
Sub-Total (NSF)	11,485	2
<b>Total (GSF)</b>	<b>11,485</b>	
<b>Department of Energy</b> Area (NSF)		
Planning	1,145	
Information Repository	19,145	
Analysis	300	
Current Report	3,720	
Sub-Total (NSF)	24,310	2,4
<b>Total (GSF)</b>	<b>46,825</b>	
<b>AFRC</b> Area (NSF)		
Architectural	0	
Administration	19,500	
Cost Estimate	0	
Leasehold	0	
Special Projects	19,160	
Sub-Total (NSF)	38,660	6
<b>Total (GSF)</b>	<b>85,485</b>	
<b>Joint Interagency Training Center - Etabl</b> Area (NSF)		
Administration	11,100	
Education	21,500	
Design	0	
Other	30,720	
Sub-Total (NSF)	63,320	6
<b>Total (GSF)</b>	<b>148,805</b>	
<b>Billeting</b> Area (NSF)		
Planning	69,700	
Sub-Total (NSF)	69,700	7
<b>Total (GSF)</b>	<b>218,510</b>	
<b>Total Building Area</b> Area (GSF)		
National Guard Bureau	11,485	
Department of Energy	46,825	
Armed Forces Business Center	19,890	
Joint Interagency Training Center	48,870	
Billeting	78,885	
<b>Total (GSF)</b>	<b>205,955</b>	





## Professional Services

### DESIGN

Architectural Design  
Sustainable Design  
Interior Design  
Landscape Architecture  
Structural Engineering  
Mechanical Engineering

Electrical Engineering  
Civil Engineering  
Data System Design  
Lighting Design  
Energy Consumption Analysis

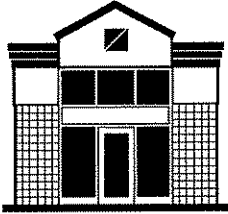


### POST DESIGN

Construction Administration  
Value Engineering  
Life Cycle Cost Analysis  
Post-Occupancy Evaluation



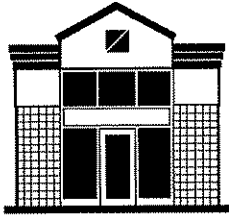




## Quality Assurance

At ZMM, we strive to be the best. Our Quality Assurance Program is one step in the process of exceeding our clients' expectations. This program includes the following six components:

1. **Selecting the Project Team**  
ZMM's diverse staff ensures that each project team is made up of highly qualified members, each dedicated to the project's success.
2. **Identifying Project Requirements**  
Project team members are fully integrated in each phase of the design process, ensuring a quality project from the beginning, and so are better able to take advantage of early sustainable design decision-making.
3. **Identifying Client Expectations**  
Knowing and understanding our clients' expectations is our goal. This knowledge gives ZMM a baseline for exceeding expectations.
4. **Ongoing Project Reviews**  
As part of the ongoing project reviews, we conduct quality assurance evaluations during each stage of the project:
  - Schematic Design Phase
  - Design Development Phase
  - Construction Documents Phase
  - Construction Administration Phase
5. **Post Project Review**  
At the completion of every project, ZMM staff members participate in a learning session to gain insight useful for future projects.
6. **Staff Training, Assessment and Enhancement**  
Ongoing staff development and training is very important to ZMM. Providing increased opportunities for learning and advancement leads to happier employees and even more successful projects.

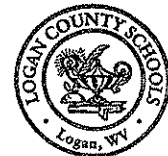
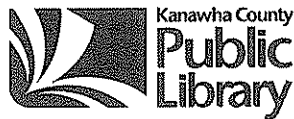
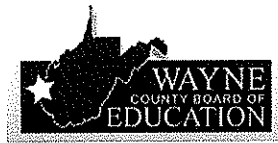


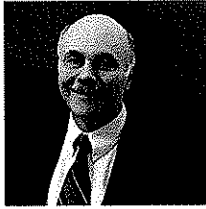
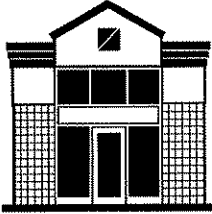
## Ongoing Clients

The quality of our work is key to our continued success and repeat client base.



Lincoln County Schools





## Steven L. Cook, P.E.

### Position

Senior Mechanical and Electrical Engineer

### Education

B.A., English, West Virginia University, 1972

2 Years toward B. S., Mechanical Engineering, WVIT, 1974-1975

M.A., Humanities, Marshall University Graduate College, 2004

### Employment History

1989-Present, ZMM, Inc., Senior Mechanical Engineer

1976-1989, Charleston Area Engineering Firm, Project Manager

1972-1976, Charleston Area Engineering Firm, Designer

### Professional Credentials

Registered Engineer (WV)

Member of ZMM's Board of Directors

Member of ASHRE

### Professional Experience

Mr. Cook started his career in 1972 as a designer for an engineering firm in Charleston, WV. He is a Professional Engineer registered in West Virginia. He has designed and engineered many projects throughout the state of West Virginia.

#### Responsibilities Include:

Mechanical Design and Engineering.

Serves as liaison between clients and utility companies.

Design of sanitary and gas site utilities, site utility specifications.

In-house review of plumbing, sprinkler system, fire pump, and domestic water booster pump designs.

Review of plumbing, fire protection specifications, and temperature control design.

Equipment selection - air handling units, pumps, and boilers, site visits, observation reports and punch lists.

### Project Experience

WV Army National Guard - Glen Jean Armed Forces Center

WV Army National Guard - Logan Readiness Center

WV Army National Guard - CFMO Expansion Project

State of West Virginia Regional Jails

State of West Virginia Juvenile Detention Centers

Highland Hospital

Saint Albans High School

Lincoln County High school



## R. Scot Casdorff, PE

### Position

Electrical Engineer

### Education

B.S., Electrical Engineering; *West Virginia University Institute of Technology, Montgomery, West Virginia; 1995*

### Employment History

2000 - Present, Electrical Engineer, ZMM, Inc., Charleston, WV  
1995 - 1999, Electrical/Control Systems Designer, WV Engineering Firm

### Professional Credentials

Professional Engineer (WV)

### Professional Experience

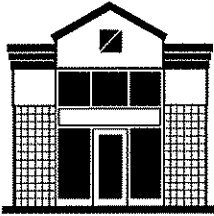
Mr. Casdorff started his career in 1995 as an electrical/control systems designer. He is responsible for Electrical Design and Engineering on various ZMM projects.

#### Responsibilities Include:

Lighting Design (Interior & Exterior)  
Electrical Power Distribution  
Security System Design  
Data System Design  
Fire Alarm System Design  
Sound System Design  
Division 16 Specifications  
Electrical Drafting & Design CAD

### Project Experience

Lincoln County High School  
Southside Elementary and Huntington Middle School  
Milton Middle School  
Wayne Elementary School  
Martha Elementary School  
Jaeger Elementary School  
West Virginia Juvenile Detentions Centers  
Logan Readiness Center  
Morgantown Readiness Center  
CFMO Expansion  
Glen Jean Armed Forces Center



## Michael D. Abernethy, LC, IESNA

### Position

Electrical and Lighting Designer

### Education

A.S. Drafting and Design Engineering Technology, WV Institute of Technology, 1970

IESNA Certificate of Technical Knowledge (TKE) in Lighting Design

### Employment History

1970-1973, FMC Chemicals, Designer/Draftsman

1970-1972, US Army, Construction Draftsman/Model Maker

1973-1988, ZMM, Inc., Electrical Designer/Technician

1988-1992, W. Va. Signal & Light, Inc., Construction Estimator/  
Purchasing Agent & Office Manager

1992-Present, ZMM, Inc., Electrical Designer/Technician

### Professional Credentials

Lighting Certified by the National Council on Qualifications for the Lighting Professions (NCQLP)

Master Electricians License (West Virginia)

### Professional Experience

Mr. Abernethy is responsible for interior and exterior building lighting design, lighting control and energy management system design, building electrical power distribution design, data system design, sound system design, fire alarm system design, security system design, closed circuit TV System design, emergency generator system design, Division 16 specification writing, commercial building electrical cost and budget estimating, electrical design and production time estimating and existing and new facilities inspection and documentation at ZMM.

In addition to Mr. Abernethy's design responsibilities, he also serves on ZMM's AutoCAD production committee.

Mr. Abernethy started his career in 1970 in the field of drafting for the United States Army and FMC Chemicals in Charleston, WV. He began his electrical design experience in 1973 at ZMM. He is a certified Lighting Designer recognized by the National Council on Qualifications for the Lighting Professions and a Licensed Master Electrician in the State of West Virginia.

### Project Experience

Lincoln County High School

St. Albans High School

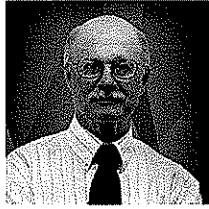
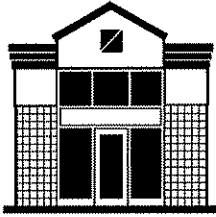
Southside Elementary/Huntington Middle School

Martha Elementary School

Greenbrier East High School

Erma Byrd Higher Education Center





## Steven Branner, AIA, NCARB

### Position

Principal, ZMM, Inc.  
Corporate Management  
Architectural Programming  
Architectural Design and Production

### Education

B.S., Architecture; University of Cincinnati, Cincinnati, Ohio; 1967

### Employment History

1967-1973, Project Architect; ZMM Inc.  
1973-1982, Director of Architecture; ZMM, Inc.  
1982-present, President; ZMM, Inc.

### Professional Credentials

Registered Architect (WV, VA, OH, KY, FL, NY, CA)  
NCARB Certification  
Professional Member; American Institute of Architects (WV)  
President, 1977 & 1978

### Civic Affiliations

Member; South Charleston Rotary Club  
Past member and Chairman, WV Archives & History Commission

### Professional Experience

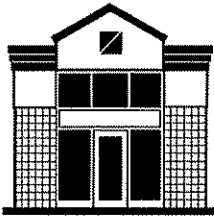
Mr. Branner has been employed with ZMM since 1967. His experience includes all aspects of the management, design, and production of small projects to those exceeding \$100M with an emphasis on Military / Public / Governmental Facilities, Correctional Facilities, and Industrial Facilities.

Mr. Branner also maintains an active role in each project in which he is the principal-in-Charge from it's inception through construction completion. Specific project responsibilities include contract negotiation, building programming, project budgeting, and scheduling, schematic design compliance with project requirements, cost estimating, quality control, and the general overview of each project to insure that client expectations are met.

### Major clients overseen by Steve include:

West Virginia Regional Jail & Correctional Facility Authority  
Dow Chemical Company  
NGK Spark Plug Company  
Cecil I. Walker Machinery Company  
West Virginia Army National Guard  
West Virginia General Services Division  
Kanawha County Public Library  
Charleston Area Medical Center (CAMC)  
Highland Hospital





## Robert C. Doeffinger, P.E.

### Position

Principal, Engineering Project Manager  
Corporate Management, Project Management and Coordination,  
Engineering Programming and Design

### Education

B.S., Mechanical Engineering; *West Virginia University,  
Morgantown, West Virginia; 1973*  
M.S., Architectural Engineering; *Pennsylvania State University,  
University Park, Pennsylvania; 1976*

### Employment History

1982-present, Vice-President, Secretary and Treasurer; ZMM, Inc.  
1977-1982, Director of Engineering; ZMM, Inc.  
1976-1977, Mechanical and Architectural Engineer; ZMM, Inc.

### Professional Credentials

National Council of Examiners for Engineering and Surveying  
(NCEES)  
Registered Engineer (WV, TN, FL, PA, VA, NC, SC, ME, OH, NH,  
NY, KY)  
Member; ASHRAE - Chairman, Technical Committee 4.1 - HVAC  
Load Calculations

### Civic Affiliations

Councilman; City of Point Pleasant, WV  
Director; Mason County Development Authority  
Director; Point Pleasant River Museum  
Member; West Virginia Institute of Technology Electrical Engineers  
Technical Advisory Committee

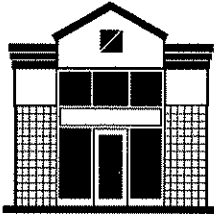
### Professional Experience

Mr. Doeffinger is Principal-in-Charge of Engineering. It is his responsibility to ensure that the mechanical and electrical engineering components of ZMM's design are coordinated and integrated into the final product.

Mr. Doeffinger is responsible for new design and retrofit of chilled water systems for all building types including large regional shopping malls. He is involved daily with the firm's selection of appropriate systems for all building types and performs life cycle cost and energy studies.

Mr. Doeffinger is a member of the American Society of Heating, Ventilation and Air-Conditioning Engineers. He is the current national Chairman of the Technical Committee on Heating and Air-Conditioning Load Calculation. He is involved in writing the National Standard on the Method of Calculation, which will shape the nature of the future building energy use for the nation.





## **Adam R. Krason, AIA, NCARB, LEED AP**

### **Position**

Project Manager

### **Education**

Bachelor of Architecture; The Catholic University of America, Washington, D.C.; 1998

B.S., Civil Engineering; The Catholic University of America, Washington, D.C.; 1998

### **Employment History**

2003 - Present, Project Architect, ZMM, Inc.

1998 - 2003, Project Architect, Charleston Area Architectural Firm

1998, Consultant, Anderson Consulting

### **Professional Credentials**

Registered Architect: West Virginia and Ohio

LEED Accredited Professional

Construction Specifications Institute – CDT

Member of American Institute of Architect

NCARB Certification

### **Civic Affiliations**

West Virginia Vision Shared-Sustainable Economic Development Team

West Side Main Street Design Committee, Charleston, West Virginia

West Virginia Qualifications Based Selection Council

Development Council, St. Agnes School, Charleston, West Virginia

### **Professional Experience**

Mr. Krason's experience includes all aspects of the design and production of small and large projects with an emphasis on Military, Public, Government Facilities, Educational Facilities and Industrial Facilities. Mr. Krason also serves on ZMM's Board of Directors.

Specific project responsibilities: building programming, code compliance review, assistance with the preparation of architectural specifications, project budgeting and scheduling, schematic design compliance with project requirements, and the general overview of each project to ensure client expectations.

### **Project Experience**

West Virginia Army National Guard - Logan Readiness Center

West Virginia Army National Guard - CFMO Expansion Project

West Virginia Army National Guard - Morgantown Readiness Center

Judge Donald F. Black Courthouse Annex

State Office Building 5, 6, & 7 Analysis

The Boulevard at 2412 - Residential Development







## Nathaniel Spencer, Associate AIA

### Position

Designer, ZMM, Inc.

### Education

Bachelor of Architecture, University of Tennessee, Knoxville, TN, 2007

Architectural Drafting and Construction Technology, West Virginia State College, Institute, WV - College Credit received

### Employment History

2007 - Present, Designer, ZMM, Inc.

2003 - 2006, Summer Intern, ZMM, Inc.

### Professional Credentials

Associate Member; American Institute of Architects (WV)

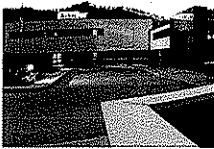
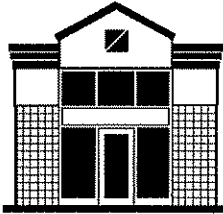
### Professional Experience

Mr. Spencer has been employed by ZMM since 2003 when he started working as an intern. Experience includes the production of architectural drawings throughout all phases of the project. Mr. Spencer has background developing both 3-D and physical models along with construction document production.

Mr. Spencer works closely with the project architect to efficiently produce clear and accurate drawings to ensure that client expectations are met.

### Project Experience:

WV Army National Guard - Logan Readiness Center  
WV Army National Guard - Morgantown Readiness Center  
WV Army National Guard - Ripley Readiness Center  
WV Army National Guard - CFMO Expansion Project  
Judge Black Courthouse Annex  
Martha Elementary School  
Hacker Valley Pre-K-8 School  
Southside Elementary/Huntington Middle School  
The Boulevard at 2412



## **Electrical Service Upgrade Projects**

**State Office Buildings #5, 6 and 7 – Charleston, WV**

**CASCI Building on Kanawha Boulevard – Charleston, WV**

**Mount View High School – Welch, WV**

**Hamlin Middle School – Hamlin, WV**

**Walker Machinery Branch 90 Service Shops – Belle, WV**

**Walker Machinery Dynamometer Addition - Belle, WV**

**Greenbrier East High School - Fairlea, WV**

**Sears & Roebuck - Orangeburg, SC**

**Buffalo Middle School - Wayne County, WV**

**Barboursville Middle School Football Field –**

**Barboursville, WV**

**IRS Data Center – Martinsburg, WV**

**Guthrie Center – Sissonville, WV**

**Cabell County Board of Education HEHS Renovation –**

**Huntington, WV**

**Goodwill Industries – Charleston, WV**

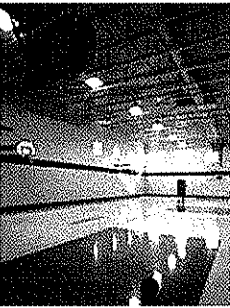
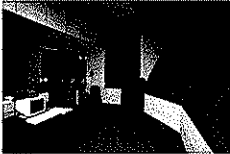
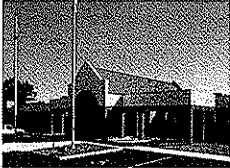
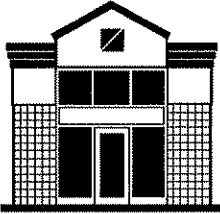
**Lakin Correctional Center – Mason County, WV**

**St. Albans High School – St. Albans, WV**

**Worker's Comp Building – Charleston, WV**

**Union Carbide Building 6000 – South Charleston, WV**

**Sears Stores – Various Eastern US Cities**



## Correctional Facilities

### West Virginia Regional Jails

In 1990, the West Virginia Regional Jail and Correctional Facility Authority awarded the joint-venture team of ZMM/CRA a contract to design a prototype detention facility with the flexibility to meet the long range needs of 10 geographical regions in the State of West Virginia. The prototype building was designed as a 200 bed, 300 bed and 400 bed facility with the ability to add a 100 bed housing pod to each. All services required by the building were designed to accommodate the maximum population.

Unique to the design of the prototype jail is the ability of the staff to fully monitor all inmate movement within the corridor system of the building from a single central control location.

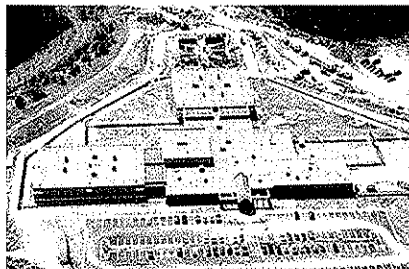
The following systems were designed and installed: integrated security and PA system, closed circuit television, fire alarm system, door access control integrated with security system, cable television and perimeter security system.

The **Central Regional Jail** in Flatwoods, Braxton County, WV, was the first of the prototype jails to be completed. It is a 200 bed medium/maximum security facility of approximately 100,000 SF

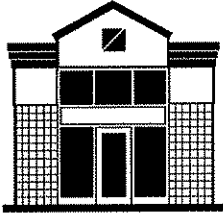
The **South Central Regional Jail**, second of 10 regional jails to be completed, is a 300 bed facility of 140,000 square feet located in the Southridge Business Park, Charleston, West Virginia.

The **Southern Regional Jail** is a 300 bed regional jail of approximately 133,000 SF. The jail has facilities for 96 maximum security inmates with the remaining housing units designed for medium security. This facility is located in Beckley, WV.

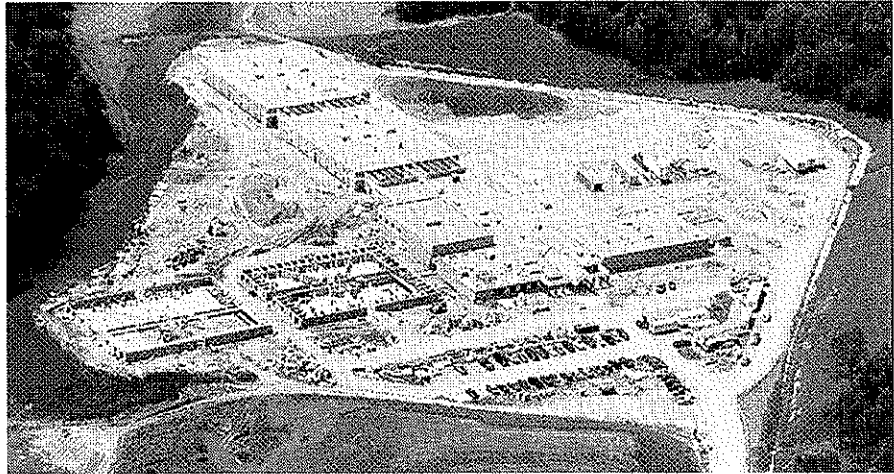
The **Northern Regional Jail and Correctional Facility** is a 400 bed combined regional jail and correctional facility of approximately 164,000 SF consisting of 200 beds used by the regional jail and 200 beds used by the West Virginia Department of Corrections. The regional jail section has facilities for 48 maximum security inmates with the remaining housing units designed for medium security. All housing units occupied by the Department of Corrections are medium security.



**Southwestern Regional Jail during construction**



## Correctional Facilities



The **Southwestern Regional Jail** is a 300 bed facility located in Holden, Logan County, WV, and was completed in 1998.

Located in Dodridge County, WV, the **North Central Regional Jail** is a 400 bed facility and was completed in 2001.

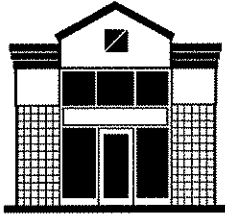
The **Western Regional Jail**, located in Cabell County, is a 400 bed facility and is scheduled for completion in 2003.

A 300 bed facility, the **Eastern Regional Jail**, is located in Martinsburg, WV and was completed in 1999.

Completed in 2000, the **Potomac Highlands Regional Jail**, is located in Augusta, Hampshire County, WV and is a 200 bed facility.

**Huttonsville Correctional Facility/100 Bed Dormitory** - The 15,000 SF dormitory was designed as a minimum/medium security facility and was completed on schedule and within the Owner's budget.

**Prison Industries Facility** - Northern Regional Jail and Correctional Facility - This 25,000 SF building is located at the Northern Regional Jail and Correctional Facility to serve the prison industries vocational education requirements of the Correctional Facility Division. The building provides space for a mattress shop, print shop, vinyl notebook shop, and Braille shop in the industries area. Within the vocational education area, space is provided for automobile repair and woodworking. The building was completed on schedule and within the Owner's budget.



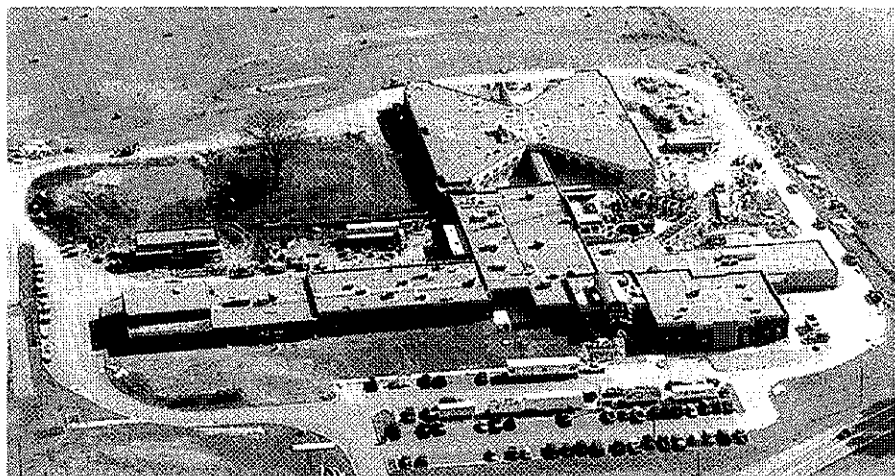
## Correctional Facilities

**Denmar Correctional Facility** - This project consisted of renovations to an existing 4-story hospital's toilet/shower system to accommodate a medium security facility for the West Virginia Department of Corrections.

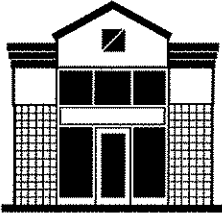
**Alderson Federal Prison Camp**, Alderson, WV - ZMM provided architectural and engineering services for a major renovation of this women's federal correctional facility located in the Greenbrier River valley. This project includes extensive renovation of eighteen 1938 vintage buildings to current federal prison standards and increases the capacity to 1,269 inmates.

ZMM developed a management plan which allowed the facilities to remain operational at the original inmate capacity during the three year construction period. Renovations included interior and exterior building modifications and finishes, heating, ventilating, plumbing and electrical upgrades, totaling \$10,000,000.

The **Lakin Correctional Center for Women** opened in early 2003 as the first comprehensive state correctional facility for women. Located in Lakin, Mason County, this 225-bed facility houses medium and maximum-security female inmates in a building complex of over 153,000 square feet. The project included renovation of an existing building for education and indoor recreation. ZMM will also complete designs for a separate 124-bed dormitory for minimum security, as well as a correctional industries building, on the campus at Lakin.



**Lakin Correctional Center During Construction**



## Juvenile Centers

### West Virginia Juvenile Facilities

Following a very successful program of regional jail construction based on ZMM/CRA's prototype design, the West Virginia Regional Jail & Correctional Facility Authority awarded ZMM a contract to design a new prototype for juvenile detention facilities.

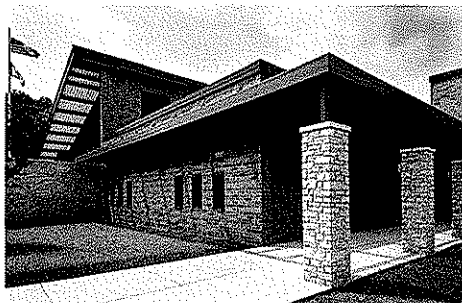
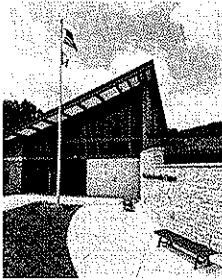
The original prototype has undergone several transformations, including a 2-story design and a prototypical staff-secured design. All of the versions of ZMM's juvenile center prototype are designed to allow safe and effective operation with a small staff.

The **J. M. "Chick" Buckbee Juvenile Center**, located near Romney, Hampshire County, was the first juvenile center bid under the new program of prototype facilities. Scheduled to open in fall 2003, this single-story, 26,500 square foot building houses a complete program of intake, medical care, education, recreation, food service and administration.

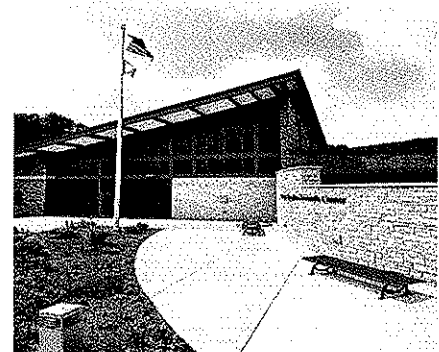
The **James H. "Tiger" Morton Juvenile Center** was designed on the site of the old Kanawha Home for Youth in Dunbar, Kanawha County, West Virginia. Site constraints led to a 2-story variation of the prototype, housing 24 beds in a total building area of 29,000 square feet. This facility, the second of the prototype structures, is scheduled for opening in late 2003.

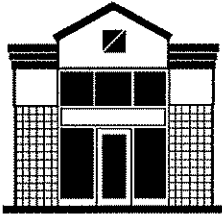
The **Gene Spadaro Juvenile Center**, located in Mount Hope, Fayette County, proved that the prototype concept can be flexible enough to accommodate a dramatic variation in programming. The "softer" approach to this minimum-security facility anticipates program funding through federal IV-E regulations, and relies on staff involvement for security rather than bars and hardware. Completion of this new facility is scheduled for summer 2004.

The **Robert L. Shell Juvenile Center** will be constructed on a site just below the new **Western Regional Jail** in Barboursville, Cabell County, West Virginia. Nearly identical to the Gene Spadaro Juvenile Center, this new center will also use federal IV-E funding and houses minimum-security youth. This facility is scheduled to open in late 2004.



Gene Spadaro Juvenile Center





## Juvenile Centers

### Gene Spadaro Juvenile Center

West Virginia Regional Jail and Correctional Authority  
Mount Hope, West Virginia

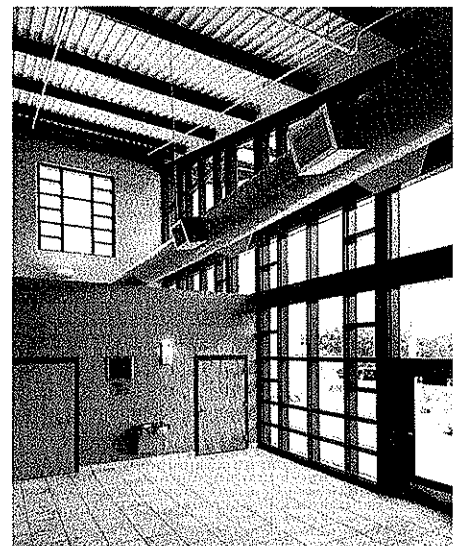
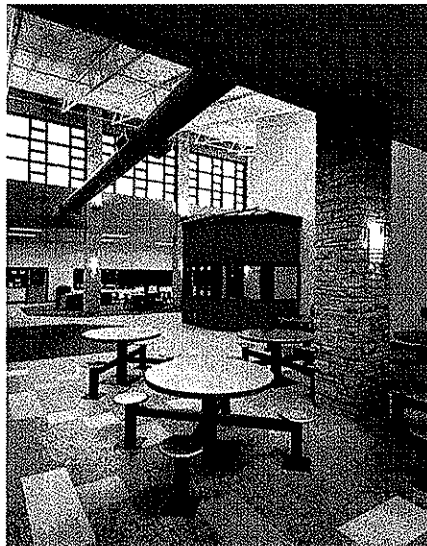
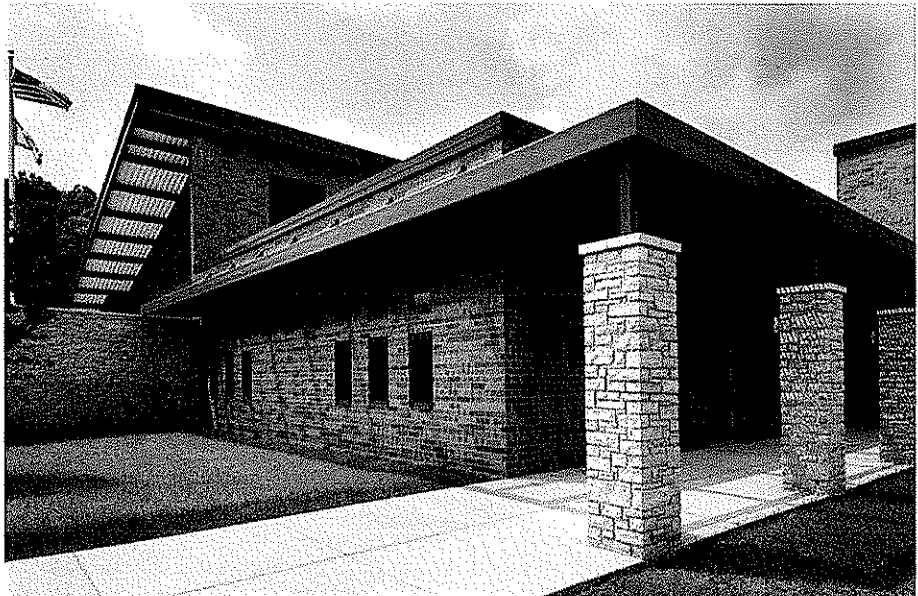


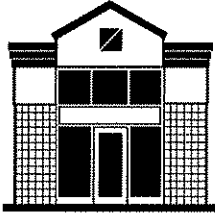
This prototype proved that the concept can be flexible enough to accommodate a dramatic variation in programming. The "softer" approach to this minimum-security facility anticipates program funding through federal IV-E regulations, and relies on staff involvement for security rather than bars and hardware.



This facility won the 2005 Merit Award for *Achievement in Architecture* for American Institute of Architects, West Virginia Chapter.

**Completed:** June 2004





## Military Projects

### Armed Services Reserve Center

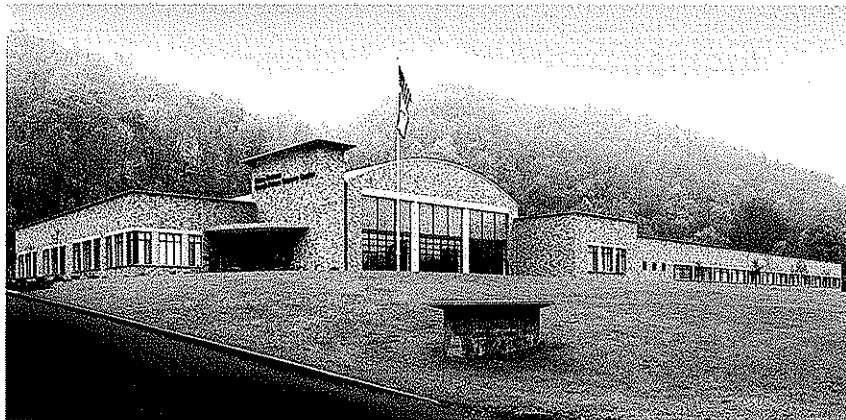
Camp Dawson, WV

The Armed Forces Reserve Center will house five National Guard and Army Reserve Units and their support personnel. Its mission is twofold: first, to maintain readiness for its attached units and second, to serve as a resource to the surrounding community. The primary readiness mission for the center's attached units is accomplished by providing designated spaces for each unit as well as general educational and gathering spaces that can be shared among the units.

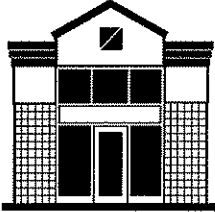
The building's community mission is to provide a gathering space for social functions, a shelter-in-place in times of natural disaster, and a community education resource with distance learning network capabilities. It also includes kitchen and dining facilities and physical fitness areas.

**Size:** 56,200 SF

**Completion Date:** June, 2000

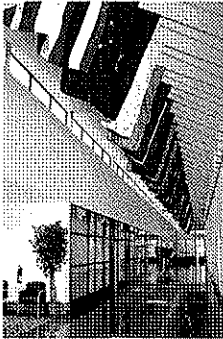






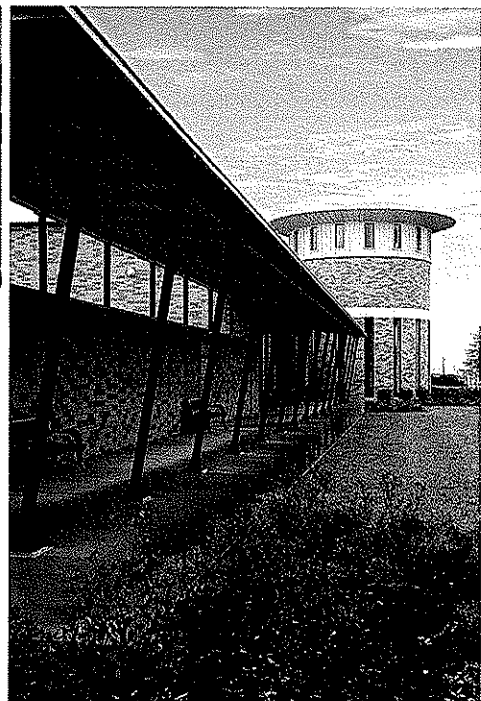
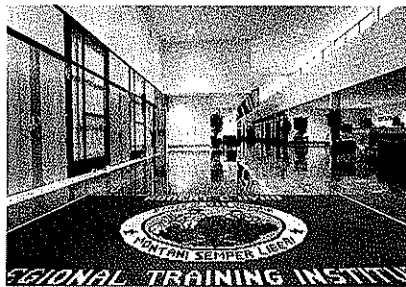
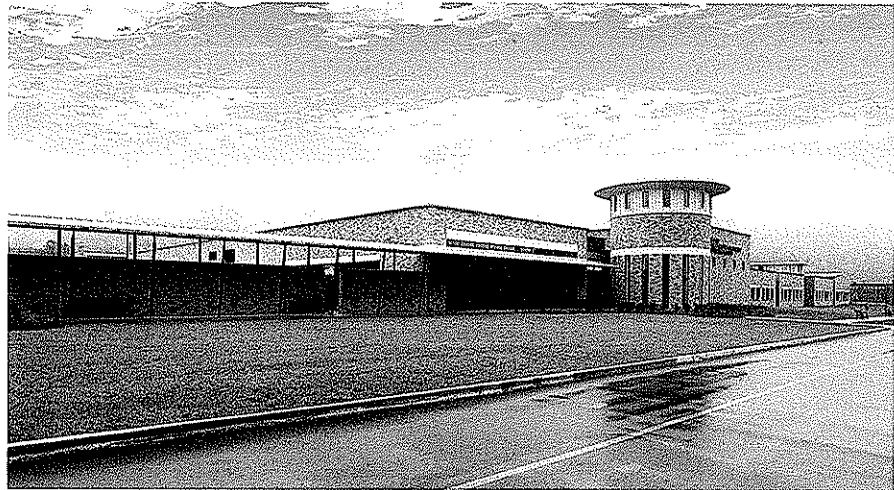
## Military Projects

### Robert C. Byrd Regional Training Institute Camp Dawson, WV



The Regional Training Institute at Camp Dawson is a new 148,066 square foot facility that will provide a setting for a variety of training classes, meetings, and conferences serving both military and civilian populations from the region and areas throughout the country. The facility includes classrooms, library, sleeping rooms, dining room, auditorium, swimming pool, Post Exchange and snack bar.

**Size:** 148,066 SF  
**Completion Date:** 2002





## Military Projects

### Glen Jean Armed Forces Center

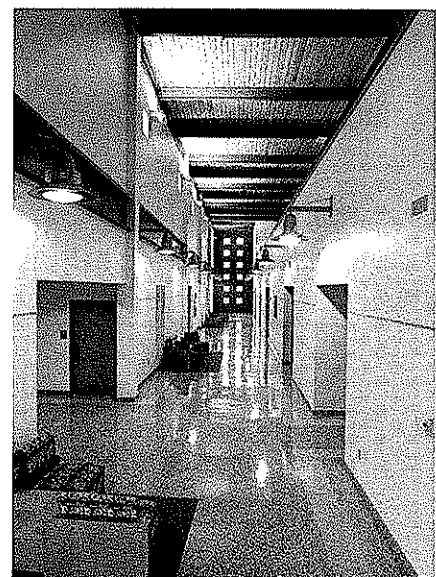
Glen Jean, WV

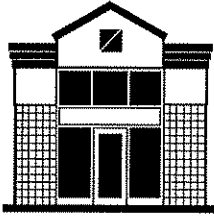
The Glen Jean Armed Forces Center contains three distinct military functions: a facility for routine maintenance of over-the-road and tracked military vehicles, an armory housing four West Virginia National Guard units and the Southern West Virginia Military Entrance Processing Station, where new recruits officially enter the military system.

The brick exterior walls are highlighted with limestone and metal trim accents. A large assembly hall, plus classroom and training space, enhance the ability of the armory building to provide training for military personnel, and additionally to provide space for community functions.

**Size:** 109,000 SF

**Completion Date:** 2003





## Military Projects

### Construction & Facilities Management Office

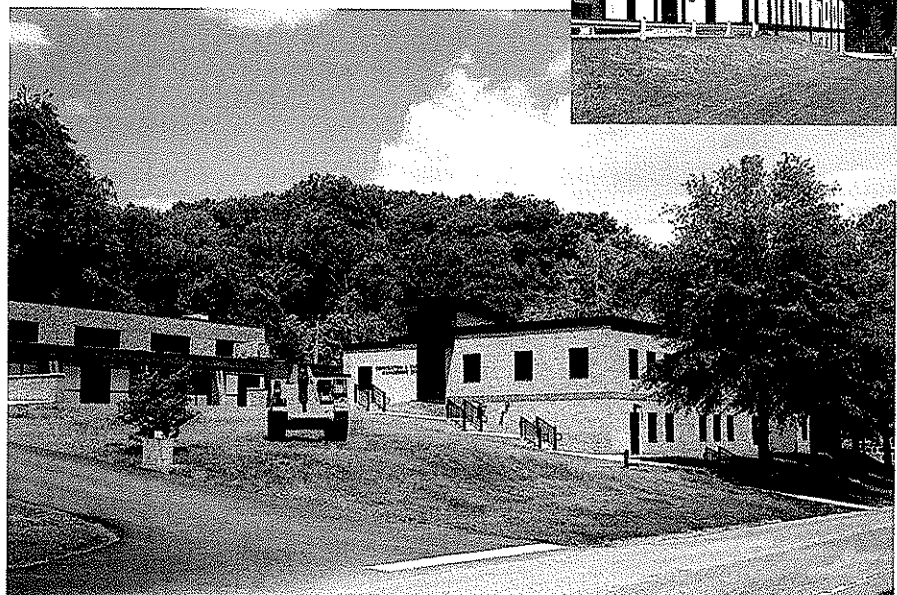
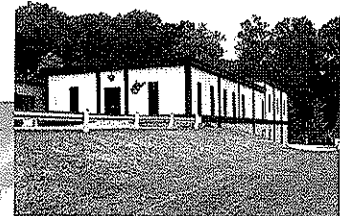
West Virginia Army National Guard  
Charleston, WV

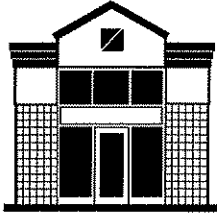
The Construction and Facilities Management Office (CFMO) Expansion project will bring all of the operations of the CFMO together under one roof. The branches that will occupy this facility include: Director of Engineering, Environmental, Planning and Programming, Facility Operations & Maintenance, Business Management, Resource Management, and Design and Construction. This new facility is located slightly to the front, and adjacent to the existing facility, lending prominence to the new construction, and providing a new aesthetic to the entire complex. This transitional space was designed to connect the two structures, while maintaining a connection to the outside through use of natural light, direct visual connections to the exterior, large volumes, irregular geometries, and the use of 'natural' materials.

The entry design was coordinated with the Recruiting and Retention building to create an outdoor courtyard, along with new sidewalks, stairs and signage. The entry roof is sloped to provide a greater massing, while a lower canopy provides scale and protection from the elements. Large gathering and work spaces were located on the north elevation to take advantage of large expanses of glazing located to capture indirect light and views of Coonskin Park.

**Size:** 19,935 SF  
**Cost:** \$3.6M  
**Completed:** January 2008

**Before**





## Military Projects

### Logan-Mingo Readiness Center

Logan, WV

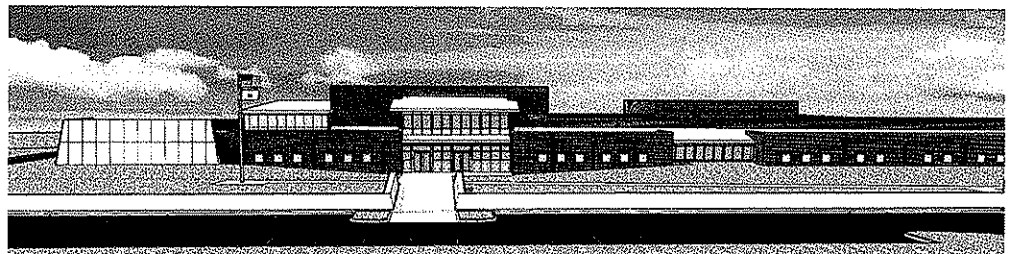
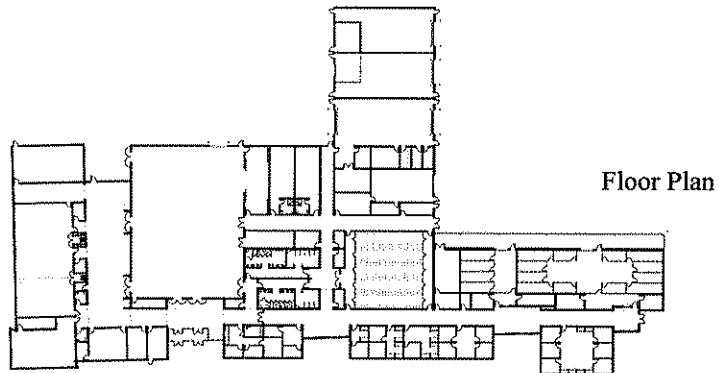
The design of the Logan-Mingo Readiness center was developed by examining both the program and building site, and developing strategies to design a facility that is functional, responds to site, security, and aesthetic parameters, while requiring minimal maintenance. The building layout was developed by working closely with the end-users to determine the appropriate configuration of building spaces to maximize the efficiency of the operations, and to respond to the unique missions of the 150<sup>th</sup> Armored Reconnaissance Squadron and the 156<sup>th</sup> Military Police (LNO) Detachment. Clear separation of “public” and “private” areas within the facility, unique office configurations related to training requirements, and the addition of State Funded additional spaces.

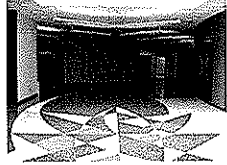
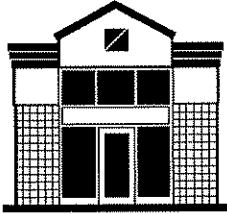
The exterior (and in many cases the interior) aesthetic of the facility was driven by the location of the Readiness Center within an industrial park on a reclaimed surface mined site. The decision led to the use of reinforced cast-in-place retaining walls that became both a functional and visual focus. Similar pre-cast walls are used to anchor the facility at the Distance Learning Center, while a cast-in-place retaining wall serves as a part of the Anti-Terrorism/Force Protection design.

**Project Budget:** \$12M

**Size:** 54,000 SF

**Completion Date:** TBD





## Government Projects

### Judge Black Courthouse Annex Parkersburg, WV

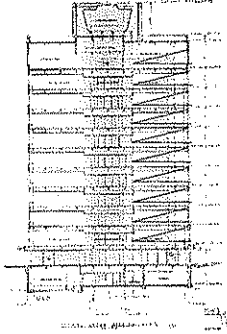
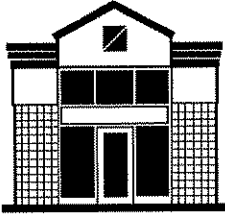
The Judge Black Annex project involved renovating an existing commercial building into county office and courtroom space for the Sheriff's Tax Office, Assessor's Office, Prosecuting Attorney's Office, and the Family Court. The design provided both secure and non-secure circulation, while taking advantage of the existing structural configuration to create large open volumes that lend the building prominence.

The interior design utilized rich colors and dramatic visual accents in public areas, with finishes selected for durability. Layered planes of varying colors accent the building's depth, and skylights provide daylight to county staff throughout the renovated office areas. Exterior improvements included the elimination of an existing storefront system as well as a change in the fenestration, to more closely match the existing courthouse and to change the character and typology of the existing facility.

**Size:** 36,828 SF

**Completion Date:** 2005





## State of West Virginia

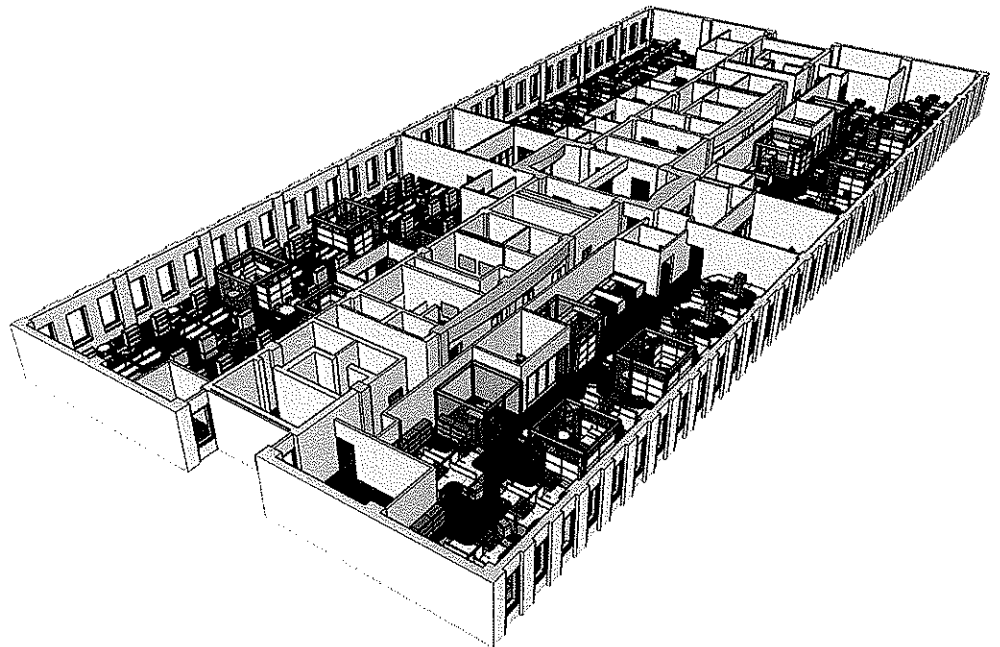
### Capitol Complex Buildings 5, 6, 7 Feasibility Study - Master Plan

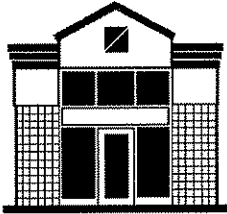
ZMM is currently undertaking an in-depth analysis of Buildings 5, 6, and 7 on the Capitol Campus. The study includes the preparation of as-built plans, as well as an analysis of all building systems, including: Life Safety; Vertical Transportation; Mechanical; Electrical; Data; Façade; Structure; and Roofing. The analysis also includes a study related to potential hazardous materials in the facility.

Once the initial analysis is complete, ZMM will develop several options related to the rehabilitation of the existing facility. Prototypical floor plans are being designed currently as well as major infrastructure and utility upgrades. ZMM is also determining sustainable design principles that will be applicable as the renovations are undertaken.

Additionally, ZMM has commenced with the design of the 10th floor for the office of technology.

**Size:** 500,000 SF  
**Cost:** TBA  
**Completed:** TBA  
**Owner:** Mr. David Oliverio, Director  
General Services Division  
1900 Kanawha Blvd., East  
Charleston, WV 25305  
304.558.3517

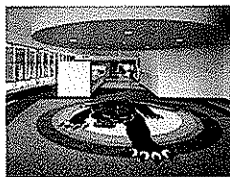




## High School Projects

### Lincoln County Comprehensive High School

Lincoln County Schools  
Hamlin, WV

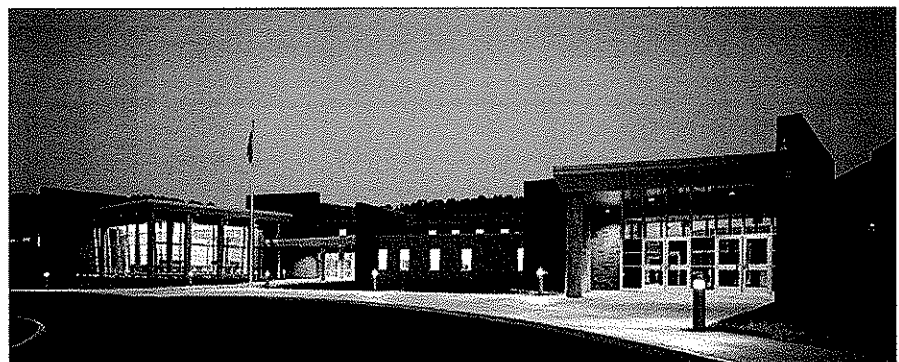


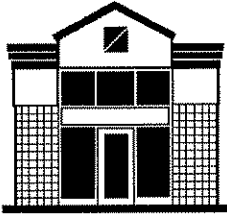
This consolidated senior high school for 850 students in grades 9 through 12, includes two gymnasiums with seating for 840 in the main gym, full food service facilities, a 300 seat auditorium, a library featuring state of the art technology, and all required curricular classroom spaces.

Vocational space is included in the facility making it one of the new breed of comprehensive high schools. The building is air conditioned with a four pipe, hot water/chilled water, air handling system meeting all indoor air quality requirements. It also includes LAN cabling system, integrated classroom intercom telephone and program system, closed circuit television, cable television system, fire alarm and perimeter security system.

This facility is one of the first educational buildings in the state to include sustainable building design features such as classroom daylighting with automatic lighting control, high efficiency HVAC equipment, and reduced storm water runoff.

**Size:** 216,500 SF  
**Cost:** \$32M  
**Completed:** August, 2006





## High School Projects

### St. Albans High School

Kanawha County Schools

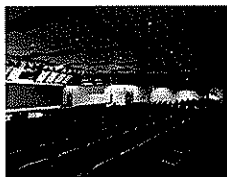
St. Albans, WV



The renovation and additions to St. Albans High School included the razing of about 40% of the existing structure and the construction of 124,000 SF of new construction. The completed facility will house 1050 students, grades 9 thru 12.



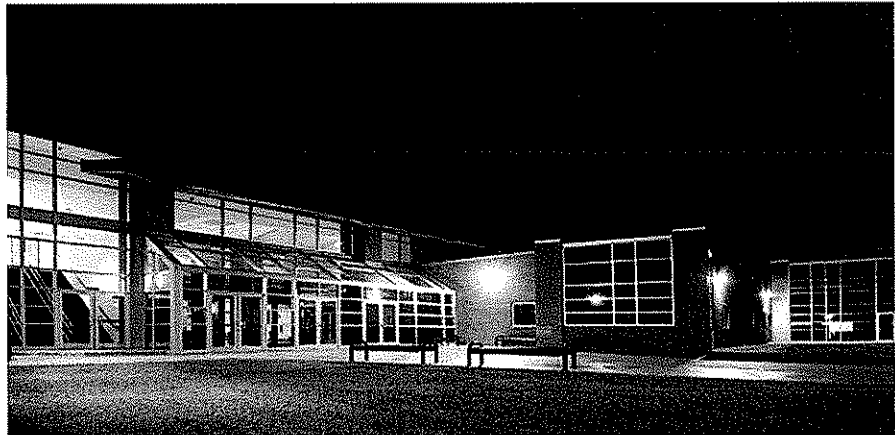
The new facility includes a distance learning center with duplex teleconferencing, and a state of the art media center with technology distribution throughout the entire facility. It also includes complete food service facilities and a commons/dining area, which serves as the focal point for access to the gymnasiums and auditorium.



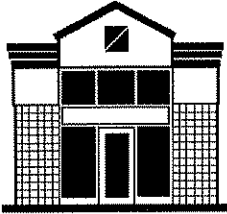
**Size:** 172,596 SF

**Project Cost:** \$24M

**Completed:** 2003

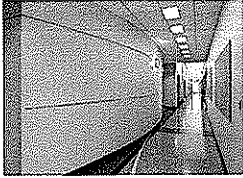






## Higher Education Facilities

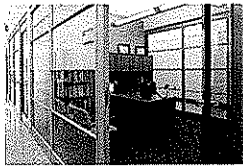
### Erma Byrd Center Public Higher Education Center Beckley, WV



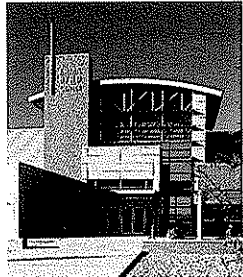
This project provides a central location for classroom and administrative space to be shared by six different colleges and universities. It is the first building of a planned campus environment to be comprised of other classroom buildings and research facilities.



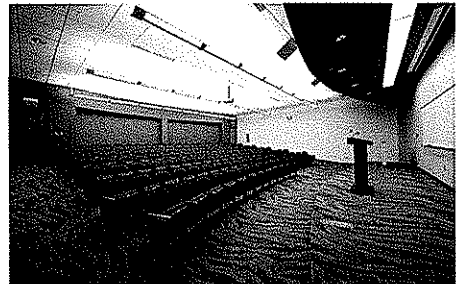
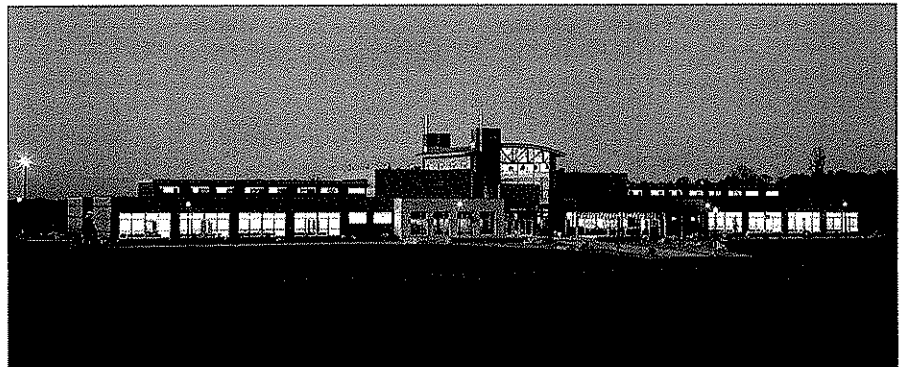
The project consists of 29,700 SF on the main level and 3,300 SF of mechanical mezzanine. Being a teaching facility, the building itself is designed to be a teaching tool. Daylighting is incorporated throughout the building and the mechanical equipment is designed to be viewed and monitored by students in a learning environment. Using data collected by various sensors, the control system can graphically display how all systems react to changes in environmental conditions.

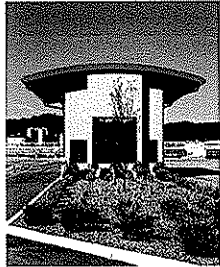
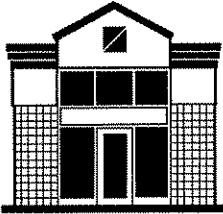


This project was funded by appropriations from Senator Robert C. Byrd, the Higher Education Policy Commission and a grant from the Appalachian Regional Commission.



**Size:** 33,000 SF  
**Cost:** \$7.5M  
**Completed:** August, 2007





## Industrial Projects

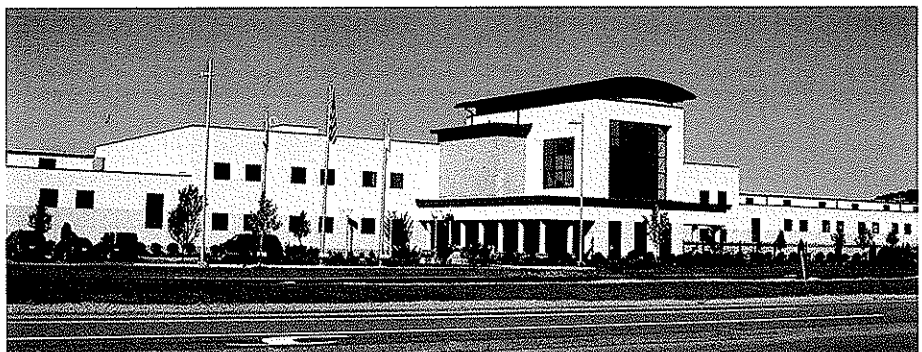
### Dow Plant Headquarters Building

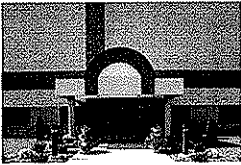
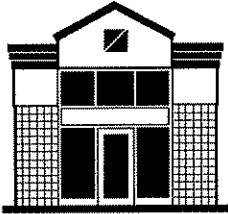
Dow Chemical Company  
South Charleston, WV

ZMM was responsible for the master planning as well as architectural and engineering design for renovations and additions to the existing plant shop to serve as the main plant headquarters housing all plant maintenance and engineering personnel.

The design includes open office space, an emergency operations center, locker room, a lunch room and plant conference center.

**Size:** 27,200 SF  
**Cost:** \$3M  
**Completed:** 1998





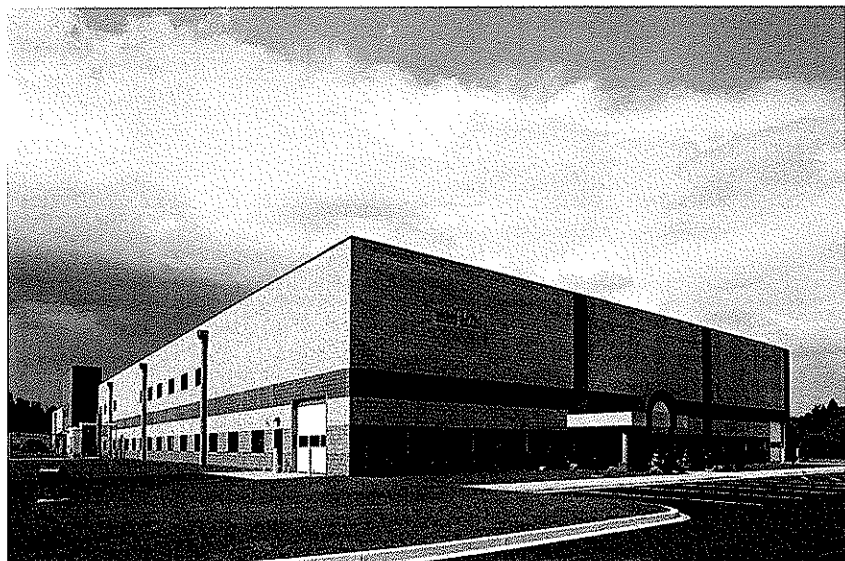
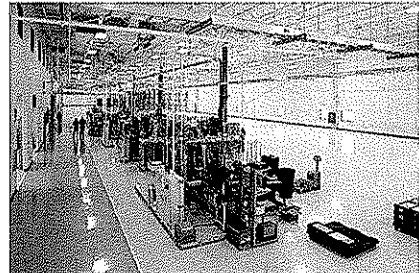
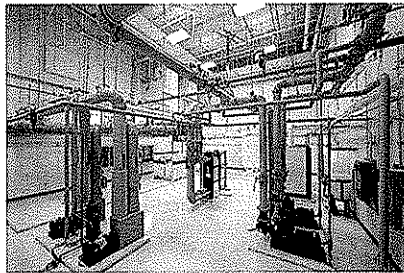
## Industrial Projects

### NGK Spark Plugs (U.S.A.), Production Facility Charleston, West Virginia

A manufacturing facility for automobile oxygen sensors, this plant contains 80,000 square feet of production/assembly area. The building includes management and administration offices, conference rooms, computer room, employee cafeteria, testing / quality control area, and a shipping / receiving area. The site provides parking for 250, extensive landscaping, and ample space for future expansion.

The building consists of a steel frame (for quick erection) and masonry exterior walls, concrete floor slabs, and acoustical ceilings in most areas. ZMM's services included the integration of process piping into the buildings' HVAC systems for energy recovery and conservation, and provisions for process / assembly line utility services (power, process water, and ventilation).

Due to the success of the first phase of the project, ZMM is currently assisting NGK with additional growth at their campus in Sissonville.





## Award Winning Design



2009

### **Construction & Facilities Management Office**

Charleston, West Virginia  
AIA Merit AWARD West Virginia Chapter  
Achievement in Architecture



2008

### **Erma Byrd Center**

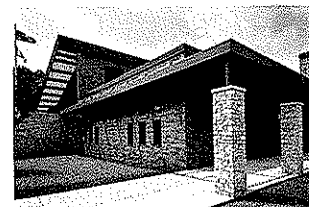
Beckley, West Virginia  
AIA HONOR AWARD West Virginia Chapter  
Excellence in Architecture  
AMERICAN SCHOOL & UNIVERSITY  
Outstanding Building Design



2007

### **Lincoln County High School**

Hamlin, West Virginia  
AIA HONOR AWARD West Virginia Chapter  
Excellence in Architecture  
EDUCATION DESIGN SHOWCASE  
Project of Distinction award  
AMERICAN SCHOOL & UNIVERSITY  
Outstanding Building Design



2006

### **Gene Spadaro Juvenile Center**

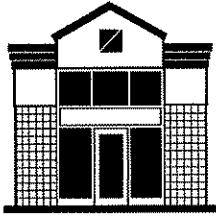
Mount Hope, West Virginia  
AIA MERIT AWARD West Virginia Chapter  
Achievement in Architecture



2004

### **St. Albans High School**

St. Albans, West Virginia  
IMPACT ON LEARNING AWARD  
Effective Transformation  
EDUCATION DESIGN SHOWCASE  
Outstanding Building Design  
AMERICAN SCHOOL & UNIVERSITY  
Outstanding Building Design



## **Additional Award Winning Design**

### **WEST VIRGINIA SOCIETY OF ARCHITECTS**

#### **Design Honor Awards**



**Corporate Headquarters Facility**  
Blue Cross / Blue Shield of West Virginia  
Charleston, West Virginia



**John XXIII Pastoral Center**  
Wheeling-Charleston Diocese  
Charleston, West Virginia



**Corporate Office Building**  
Contractors' Association of West Virginia  
Charleston, West Virginia



**One Bridge Place Office Renovation**  
Fisher-Bryson Properties  
Charleston, West Virginia

### **UNITED STATES NAVY**

#### **Admiral's Commendation**

**Operations Building Alterations**  
Naval Security Group  
Sugar Grove, West Virginia

### **CONSTRUCTION SPECIFICATIONS INSTITUTE**

#### **Honorable Mention**

**Restoration and Renovation Projects**  
Cottage Renovations to Federal Prison Camp  
Alderson, West Virginia

### **STONEWALL JACKSON LAKE**

#### **Merit Award**

**Design and Environmental Program**  
Recreation Area Basic Park  
Weston, West Virginia



## Client References

**Chilton Lilly, Executive Director**  
**WV Regional Jail and Correctional Facility Authority**  
1325 Virginia Street, East  
Charleston, WV 25301  
304.558.2110

**Brigadier General Melvin L. Burch**  
**Construction & Facilities Management Office**  
WV Army National Guard  
1707 Coonskin Drive  
Charleston, WV 25311  
304.561.6450

**Rick Modesitt, Commissioner**  
**Wood County Commission**  
No. 1 Court Square, Suite 203  
Parkersburg, WV 26101  
304.481.4035

**David L. Roach, Superintendent**  
**Lincoln County Schools**  
10 Marland Avenue  
Hamlin, WV 25523  
304.824.3033

**Father Thomas S. Acker, S.J., Executive Director**  
**The Higher Education Foundation**  
200 Main Street  
Beckley, WV 25801  
304.929.2010



STATE OF WEST VIRGINIA  
Purchasing Division**PURCHASING AFFIDAVIT****VENDOR OWING A DEBT TO THE STATE:**

*West Virginia Code* §5A-3-10a provides that: No contract or renewal of any contract may be awarded by the state or any of its political subdivisions to any vendor or prospective vendor when the vendor or prospective vendor or a related party to the vendor or prospective vendor is a debtor and the debt owed is an amount greater than one thousand dollars in the aggregate.

**PUBLIC IMPROVEMENT CONTRACTS & DRUG-FREE WORKPLACE ACT:**

If this is a solicitation for a public improvement construction contract, the vendor, by its signature below, affirms that it has a written plan for a drug-free workplace policy in compliance with Article 1D, Chapter 21 of the *West Virginia Code*. The vendor **must** make said affirmation with its bid submission. Further, public improvement construction contract may not be awarded to a vendor who does not have a written plan for a drug-free workplace policy in compliance with Article 1D, Chapter 21 of the *West Virginia Code* and who has not submitted that plan to the appropriate contracting authority in timely fashion. For a vendor who is a subcontractor, compliance with Section 5, Article 1D, Chapter 21 of the *West Virginia Code* may take place before their work on the public improvement is begun.

**ANTITRUST:**

In submitting a bid to any agency for the state of West Virginia, the bidder offers and agrees that if the bid is accepted the bidder will convey, sell, assign or transfer to the state of West Virginia all rights, title and interest in and to all causes of action it may now or hereafter acquire under the antitrust laws of the United States and the state of West Virginia for price fixing and/or unreasonable restraints of trade relating to the particular commodities or services purchased or acquired by the state of West Virginia. Such assignment shall be made and become effective at the time the purchasing agency tenders the initial payment to the bidder.

I certify that this bid is made without prior understanding, agreement, or connection with any corporation, firm, limited liability company, partnership or person or entity submitting a bid for the same materials, supplies, equipment or services and is in all respects fair and without collusion or fraud. I further certify that I am authorized to sign the certification on behalf of the bidder or this bid.

**LICENSING:**

Vendors must be licensed and in good standing in accordance with any and all state and local laws and requirements by any state or local agency of West Virginia, including, but not limited to, the West Virginia Secretary of State's Office, the West Virginia Tax Department, West Virginia Insurance Commission, or any other state agencies or political subdivision. Furthermore, the vendor must provide all necessary releases to obtain information to enable the Director or spending unit to verify that the vendor is licensed and in good standing with the above entities.

**CONFIDENTIALITY:**

The vendor agrees that he or she will not disclose to anyone, directly or indirectly, any such personally identifiable information or other confidential information gained from the agency, unless the individual who is the subject of the information consents to the disclosure in writing or the disclosure is made pursuant to the agency's policies, procedures and rules. Vendor further agrees to comply with the Confidentiality Policies and Information Security Accountability Requirements, set forth in <http://www.state.wv.us/admin/purchase/privacy/noticeConfidentiality.pdf>.

Under penalty of law for false swearing (*West Virginia Code* §61-5-3), it is hereby certified that the vendor affirms and acknowledges the information in this affidavit and is in compliance with the requirements as stated.

Vendor's Name: ZMM, Inc.  
Authorized Signature: Ad R. K. [Signature], AIA Date: 17-AUG-09