

VISIONS

A · R · C · H · I · T · E · C · T · S

RECEIVED

2010 FEB 23 AM 11:18

WV FUNDING
DIVISION



February 19, 2010

West Virginia Department of Agriculture
Administrative Services
Building 2, Room 106
4720 Brenda Lane
Charleston, West Virginia 25312

Re: *Expression of Interest, New Construction*
Two-Story Office Building, Gus R. Douglass Lane, Charleston, West Virginia

Dear Selection Committee:

N Visions is pleased to submit our qualifications for your review. We are confident that the history and experience of our firm, coupled with the expertise of our consultants, will provide West Virginia Department of Agriculture with the successful completion of a new office facility designed to meet the agency's specific needs.

Similar projects successfully completed by our team include business offices at Northgate Office Park, Charleston, West Virginia, a medical office building also located in Northgate, an office building for Ream Interests in Lewisburg, and numerous other newly constructed, or renovated office properties throughout the state.

We look forward to personally meeting with you to discuss this worthwhile project.

Sincerely,

N Visions, Inc.

A handwritten signature in black ink, appearing to read 'G. M. Soltis'.

George M. Soltis, AIA
Architect

GMS:bc

**Expression of Interest
to provide
Professional Architectural and
Engineering Services**

to the

**West Virginia
Department of Agriculture**

for a

**New Office Building
Gus R. Douglass Lane
Charleston, West Virginia**

February 23, 2010

NVISIONS

A · R · C · H · I · T · E · C · T · S

CMA Engineering, Mechanical/Electrical
Ham Engineering, Structural

PROJECT TEAM



GEORGE M. SOLTIS, AIA, NCARB
Principal/ President

Academic Experience

Bachelor of Architecture with Distinction
University of Kentucky – 1977
Conservation USA – 2007

Registration

N.C.A.R.B. No. 55,660
Active: West Virginia, Ohio, Virginia, Kentucky
Inactive: Tennessee

Professional Associations

AIAWV West Virginia
AIA American Institute of Architects

Civic Organizations

Boy Scouts of America,
Committee Member,
South Charleston
Boy Scouts of America, Order of the Arrow,
Central Region C4B,
Associate Advisor
Health Appeals Board,
City of South Charleston

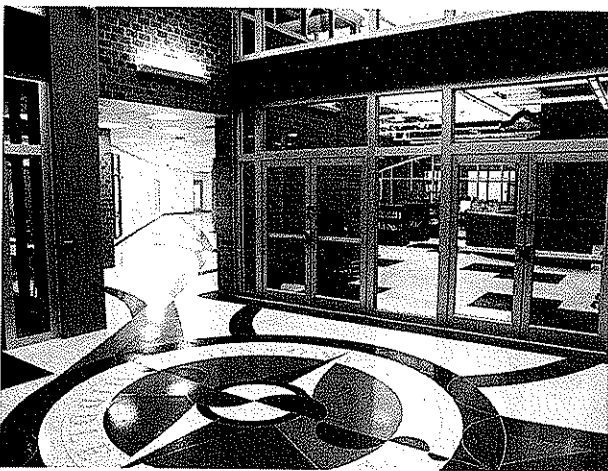
Responsibility

Principal-in-Charge, Administration/Design
Principal and Owner of N Visions

Project Experience

Educational

New Sissonville Middle School
Herbert Hoover High School
Addition/Renovations
Sissonville Branch, Kanawha County Library
George Washington High School
Addition/Renovations
South Charleston High School
Additions/Renovations
Elkview Middle School Additions/Renovations
South Charleston Public Library
Addition/Renovation
Kanawha County Schools Football Fields
Bleachers and Renovations



N VISIONS

A · R · C · H · I · T · E · C · T · S

PROJECT TEAM



Commercial

Ream Interests Office Building
Tri-State Racetrack & Gaming Center
Summers Square Office Building –
One Kenton Drive/Northgate Office Building
Capitol City Building/Renovation/Restoration

Health Care –

Over 25 years Health Care Experience

IRC Rehabilitation Clinic – South Charleston, WV
Stickler Medical Office Building – Charleston, WV
St. Mary's Hospital – Huntington, WV
Montgomery General Hospital – Montgomery,
WV
St. Joseph's Hospital – Buchannon, WV



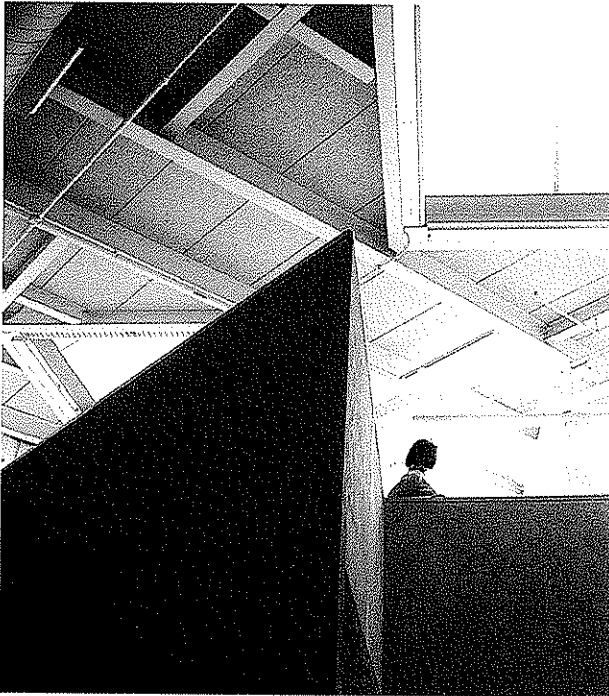
Public/Government

New United States Postal Facilities—
Hurricane, WV
Martinsburg, WV
Bluefield, WV
Princeton, WV
Beckley, WV

Historic Architecture

Historic Architect,
Meeting NPS 36CFR61.9 WV

Restoration of West Virginia
Governor's Mansion Porch
Criel Mound Park Master Plan
Restoration/Renovation of
Criel Mound
Locomotive Shelter,
Chief Logan State Park
Gates Building, Charleston, WV
Renaissance Tower, Charleston, WV
USPS Point Pleasant, WV
USPS Bluefield, WV



VISIONS

A · R · C · H · I · T · E · C · T · S

PROJECT TEAM



**HOLLY R. HARPER HUFFMAN, AIA,
NCARB
Principal**

Academic Experience
Bachelor of Architecture
(5 year Professional Degree)
Virginia Tech
Blacksburg, VA – 2001
Marshall University
Huntington, WV 1994 – 1996

Registration
N.C.A.R.B. No. 68343
Active: West Virginia

Professional Associations
AIA/WV West Virginia
AIA American Institute of Architects

Responsibility
Principal, Project Manager

Project Experience

Educational

Hickory Knoll School, Delaware, OH
Hickory Knoll School Bus
Maintenance Facility, Delaware, OH
Longfellow Elementary School,
Westerville, OH

Commercial

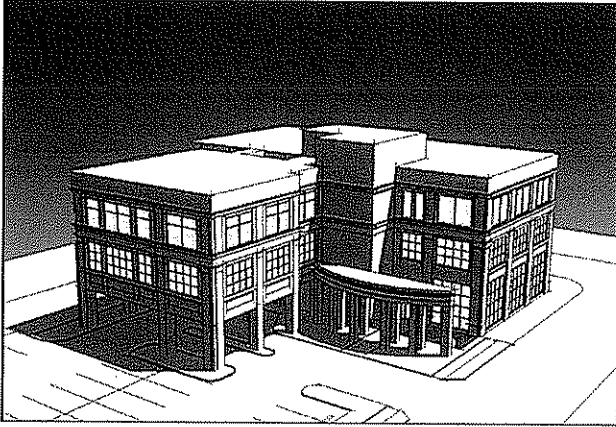
RTI Foundation Office Suite Renovation –
Ceredo Kenova, WV
Atomic Distributing Warehouse Addition –
Huntington, WV
Taft, Stettinius & Hollister Law Offices,
Columbus, OH
Blayde's Apartment and Garage Addition
Beckley, WV



VISIONS

A · R · C · H · I · T · E · C · T · S

PROJECT TEAM



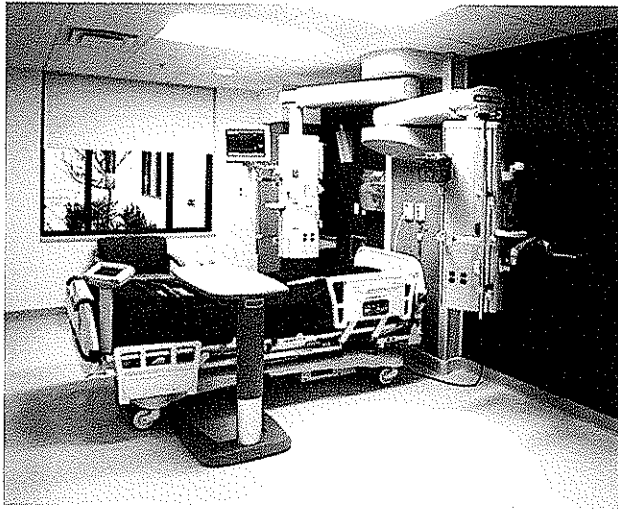
Health Care

Saint Mary's Medical Center –
Huntington, WV

Operating Room & PACU Renovation
Lab Renovation
Cornerstone Hospital Renovation
Medical Affairs' Office Suite
Administration Conference
Room Renovation
Healthy Heart U Renovation
Home Health Renovation
Cath Lab #4 Renovation
Infusion Renovation

Cabell Huntington Hospital-
Marshall University Medical Center –
Huntington, WV

OB-GYN Medical Suite Renovation



VISIONS

A·R·C·H·I·T·E·C·T·S

PROJECT TEAM



ELISSA VECELLIO MOSBY Interior Designer

Academic Experience
Bachelor of Fine Arts in Interior Design
Layton School of Art - 1970
Milwaukee, Wisconsin

Professional Associations

AIA Associate Member

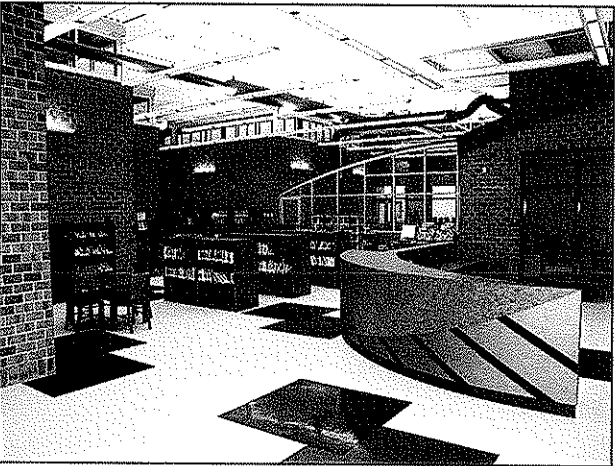
Ms. Mosby has design experience with architectural firms covering a wide scope of projects, with a strong emphasis on education, government, and health care related facilities. As the lead interior designer and space planner she matches client requirements with creative and functional solutions, to develop pleasing interior environments, which incorporate the client's long-range planning and maintenance requirements. Ms. Mosby's experience includes the following:

Institutional

WV School of Osteopathic Medicine:
Admissions Building, Renovation of
Administrative and Academic Offices
Complex, Ronald Sharp Alumni Center –
Lewisburg, WV

Educational

New Sissonville Middle School
Kanawha County Library Main Branch
Piedmont Elementary School
South Charleston Public Library
Sissonville Branch,
Kanawha County Library
George Washington High School
Addition/Renovations
South Charleston High School
Addition/Renovation
Greenbrier County Library – Lewisburg, WV
WV School of Osteopathic
Medicine Technology Building –
Lewisburg, WV



VISIONS

A · R · C · H · I · T · E · C · T · S

PROJECT TEAM



Commercial

A.G. Edwards Offices – Charleston, WV

Ream Interests Office Building –
Lewisburg, WV

Tri-State Gaming Center Addition – Nitro, WV

McCabe Henley Properties – Charleston, WV

Health Care

Over 30 years Health Care Experience

Thomas Memorial Hospital; Office Pavilion,
Out Patient Clinic, Patient Tower –

South Charleston, WV

Robert C. Byrd Clinic – Lewisburg, WV

St. Francis Hospital – Charleston, WV

Public/Government

Robert C. Byrd Federal Courthouse –
Charleston, WV

Veterans Administration Medical Center –
Huntington, WV

VISIONS

A · R · C · H · I · T · E · C · T · S

P R O F I L E

Timothy Cox, P.E., NCEES

President
Mechanical Engineer

(304) 598-2558
tcox@cmawv.com

EDUCATION

University of Colorado
Boulder, Colorado
Degree: Mechanical Engineering B.S.

REGISTRATIONS/PROFESSIONAL AFFILIATIONS

Association of Energy Engineers-CBCP

Registered Professional Engineer in WV, VA, KY

CPD (Certified in Plumbing Engineering)

Member of ASHRAE

American Society of Plumbing Engineers

National Association of Fire Protection Engineers

WV Society of Healthcare Engineers

EXPERIENCE

Mr. Timothy Cox, President and Senior Mechanical Engineer of CMA Engineering brings 24 years of mechanical design experience to our clients. Mr. Cox has been project manager and project engineer for a variety of projects.

PROJECTS

West Virginia University

Open End Contract since 1999
Mountain Lair Plaza Renovations
Bořeman HVAC/Plumbing/Fire Sprinkler
Upgrades
Soccer Stadium
Coliseum Life/Safety Renovations
Coliseum Locker Room Suites
Engineering Science Building Addition/
Renovations
Arnold Hall Fire Alarm/ Fire Sprinkler
Upgrades
Wrestling Training Facility

West Virginia University Hospitals

WV Eye Institute-MEP systems design for
new facility
Cheat Clinic-MEP design for new clinical
addition
WVUH Emergency Department-HVAC,
electrical, fire and communication
systems design for new addition
Chestnut Ridge Hospital-various MEP
renovations
Healthworks Rehab and Fitness -MEP
systems design for new facility

Mylan Pharmaceuticals, Morgantown, WV

Various projects including HVAC,
plumbing, fire sprinkler and controls for
new office building, fluid bed addition,
north plant expansion, parking garage and
weighing and packaging.



Clingenpeel/McBrayer & Associates, Inc.

824 Cross Lanes Drive
Charleston, WV 25313
(304) 343-0316 tel
(304) 343-5146 fax

5 Riddle Court
Morgantown, WV 26505
(304) 598-2558 tel
(304) 598-2472

w w w . c m a w v . c o m

P R O F I L E

Daniel Lee Ellars, P.E. LEED AP

Principal
(304) 343-0316
dellars@cmawv.com

EDUCATION

West Virginia University Institute of Technology
Montgomery, West Virginia.
Bachelors of Science in Electrical Engineering

West Virginia State University
Institute, West Virginia
Bachelors of Science in Business Administration

REGISTRATIONS/PROFESSIONAL AFFILIATIONS

Registered Professional Engineer in West Virginia
National Fire Protection Association (NFPA)
Institute of Electrical and Electronics Engineers (IEEE)
American Society of Heating, Refrigerating and Air-
Conditioning Engineers (ASHRAE)

EXPERIENCE

Mr. Daniel L. Ellars, Electrical Engineer for Clingenpeel/
McBrayer & Associates, Inc. brings 19 years of
electrical design experience to our clients. Mr. Ellars
has been a project manager and project engineer for a
variety of projects including commercial and industrial
facilities as well as for both power and
tele-communications utilities.

PROJECTS

Educational Experience

Jackson County (WV) Schools—Electrical
Upgrades & Expansions
Talcott Elementary School-Electrical Design
Fairdale Elementary School-Electrical Design

Hospital Experience

West Virginia University / Ruby Memorial Hospital
West Virginia Eye Institute—Electrical systems
design for new facility.
Thomas Memorial Hospital—Electrical systems
survey, upgrades and documentation.
Standby emergency power engine
generator replacement.

Military Experience

West Virginia Army National Guard
Eleanor (WV) Maintenance Center—Electrical
systems design for new facility.
Elkins Readiness Center-Electrical systems design
or new facilityf

Industrial Experience

Mylan Pharmaceuticals
Mylan Office & Lab Buildings—various electrical
systems designs for new, existing and expanded
facilities including new 23kV/12kV switchyard
and grounding plain layout.



Clingenpeel/McBrayer & Associates, Inc.

824 Cross Lanes Drive
Charleston, WV 25313
(304) 343-0316 tel
(304) 343-5146 fax

5 Riddle Court
Morgantown, WV 26501
(304) 598-2558 tel
(304) 598-2472

P R O F I L E

James A. Kerns Mechanical/Electrical Designer

(304) 343-0316
jakerns@cmawv.com

EDUCATION

West Virginia State College
Institute, West Virginia
Degree: Bachelor of Science in Industrial
Technology/Building Construction

REGISTRATIONS/PROFESSIONAL AFFILIATIONS

Member of ASHRAE

EXPERIENCE

Mr. James A. Kerns has over 32 years experience in Mechanical and Electrical engineering design. He has been responsible for design projects in the educational, commercial, and health care fields.

Mr. Kerns has been a great asset to Clingenpeel/McBrayer & Associates. His knowledge and experience enables him to complete project designs in a clear and concise manner and in a timely fashion.

PROJECTS

Kanawha County Schools

George Washington High School-HVAC Renovations
George Washington High School-Classroom Additions
Horace Mann Middle School-HVAC Renovations
Elkview Middle School-Classroom Additions
Elkview Middle School-Fire Alarm System
Ruffner Elementary School-Classroom Additions
Point Harmony Elementary School-Activity Building

Concord College

Athens, West Virginia — various renovation projects throughout the campus, which include Twin Towers Fire Alarm, Twin Towers Elevator Renovation, Alexander Arts Center Chiller Replacement and new Chapel

U.S. Postal Service

Open End Contract Since 1993, which encompasses numerous Post Office Renovations, new Post Offices, and new Postal Maintenance Facilities. Mr. Kerns has been Project Manager for over 65 projects for the U.S. Postal Service.

Yeager Airport

New Parking Garages
New Emergency Generator
Electrical Upgrades
Fire Alarm System Upgrade

CMA
ENGINEERING

Clingenpeel/McBrayer & Associates, Inc.

824 Cross Lanes Drive
Charleston, WV 25313
(304) 343-0316 tel
(304) 343-5146 fax

5 Riddle Court
Morgantown, WV 26505
(304) 598-2558 tel
(304) 598-2472

www.cmawv.com

P R O F I L E

Matt Corathers, E.I. Mechanical Designer

(304) 598-2558
mcorathers@cmawv.com

EDUCATION

West Virginia University
Bachelor of Science -Mechanical Engineering

PROFESSIONAL DEVELOPMENT

Successfully passed Fundamentals of Engineering Exam

EXPERIENCE

Matt is a recent addition to CMA Engineering having previously worked for Whitman, Requardt and Associates in Baltimore, MD.

PROJECTS

West Virginia University
Mechanical design for new two-story child care facility

University High School, Morgantown, WV
Mechanical design for renovations/ upgrades to the HVAC systems

Randolph County Building
Mechanical design for completion of two story addition and modifications of the existing second floor to be used by the Family Court

Monongalia County Family Court
Mechanical design for renovations to 4,850sf in existing court facility

University of Maryland Field House
Mechanical design for the replacement of two heat exchangers and a domestic use-hot water generator

Vilotteville Elementary School, Maryland
Mechanical design for the addition of 24 new classrooms

CMA
ENGINEERING

Clingenpeel/McBrayer & Associates, Inc.

824 Cross Lanes Drive
Charleston, WV 25313
(304) 343-0316 tel
(304) 343-5146 fax

5 Riddle Court
Morgantown, WV 26505
(304) 598-2558 tel
(304) 598-2472

w w w . c m a w v . c o m

P R O F I L E

Jeremy R. Perry, E.I.

Mechanical Designer

(304) 343-0316

jperry@cmawv.com

EDUCATION

San Jose University
San Jose, CA
Degree: Mechanical Engineering B.S.

PROJECTS

WVANG Elkins Readiness Center-HVAC design,
load calculations, LEED Analysis

Gassaway Armory– HVAC Design, load calculations

Pikeview Middle School-HVAC Design, load
calculations, LEED analysis, comparative cost
analysis, hydronic layout

Holley Grove Mansion– HVAC design, hydronic
design, load calculations

Sissonville Middle School– HVAC design and load
calculation

Amos-Caravelli Funeral Home-HVAC design and
load calculations

Grey Bull Elementary, Wyoming– LEED analysis,

Warren Miller Lodge, Big Sky, MT

Sheridan Bank, Sheridan, WY

Bighorn County Historical Museum, Hardin, MT

PROFESSIONAL DEVELOPMENT

Successfully passed Fundamentals of Engineering
Exam
WV Society of Healthcare Engineers

Various ASHRAE, HVAC and LEED design courses

EXPERIENCE

Mr. Perry joined CMA Engineering in 2008. He
previously worked for MKK Consulting Engineers
in Billings, MT.

CMA

ENGINEERING

Clingenpeel/McBrayer & Associates, Inc.

824 Cross Lanes Drive
Charleston, WV 25313
(304) 343-0316 tel
(304) 343-5146 fax

5 Riddle Court
Morgantown, WV 26505
(304) 598-2558 tel
(304) 598-2472

www.cmawv.com

P R O F I L E

Jerry F. Betarie

Electrical Designer

(304) 598-2558

jbetarie@cmawv.com

EDUCATION

Penn State, University Park, PA
Degree: B.S. Electrical Engineering.

EXPERIENCE

Mr. Betarie has 19 years experience in Project Management, Electrical Design and Project Estimating.

PROJECTS

University High School, Morgantown, WV
Electrical design services for the renovations to the electrical system

Ridgedale Elementary School
Electrical design for renovations/
upgrades to electrical system

Fairfield Inn, Morgantown, WV
Electrical design for new 50,000sf hotel

Barbour County Bank, Philippi, WV
Electrical design for renovations of
existing facility and the addition of
A two-story, 3,500sf, building

Fairmont Federal Credit Union
Electrical design for tenant fit-out of the
second floor space

CMA
ENGINEERING

Clingenpeel/McBrayer & Associates, Inc.

824 Cross Lanes Drive
Charleston, WV 25313
(304) 343-0316 tel
(304) 343-5146 fax

5 Riddle Court
Morgantown, WV 26505
(304) 598-2558 tel
(304) 598-2472

www.cmawv.com

P R O F I L E

Larry Weese Mechanical/Plumbing Designer

(304) 343-0316
lweese@cmawv.com

EDUCATION

West Virginia University
Morgantown, West Virginia
Degree: Division of Forestry BS,MS

PROJECTS

Medical Facilities Experience

Charleston Area Medical Center

Women & Children's Hospital- Renovations to
Emergency Room

Hess Medical Office Building-New Facility

Pinewood Medical Office Building-Renovations

Southern West Virginia Hospice-New Facility

NorthGate Doctor's Office Building-New Facility

WV Department of Health and Human Resources

Office of Chief Medical Examiner, Charleston
New Facility Mingo County

Emergency Response Facilities

Randolph County 911-New Facility

Mason County 911-New Facility

Raleigh County 911-New Facility

Orchard Manor Fire Station-New Facility

Industrial Experience

Standard Laboratories-Laboratory Addition

Dow Process Control-New Facility

Diamond Electric-Expansion

Commercial Experience

Bobcat of Advantage Valley-New Facility

Allegheny Springs Restaurant

PROFESSIONAL DEVELOPMENT

Various seminars and technical sessions

EXPERIENCE

Mr. Larry Weese, Mechanical Designer for
Clingenpeel/McBrayer & Associates, Inc. brings
18 years of mechanical design and project
management experience to our clients.



Clingenpeel/McBrayer & Associates, Inc.

824 Cross Lanes Drive
Charleston, WV 25313
(304) 343-0316 tel
(304) 343-5146 fax

5 Riddle Court
Morgantown, WV 26505
(304) 598-2558 tel
(304) 598-2472

www.cmawv.com

Ham Engineering

Structural Engineering

South Charleston, WV

Judson C. Ham, Jr., PE

President/Principal Engineer

Education

West Virginia Institute of Technology
Bachelor of Science in Civil Engineering - May 1974

West Virginia College of Graduate Studies
Master of Science in Engineering - December 1978

Registered Professional Engineer

West Virginia
Ohio
Pennsylvania
Tennessee
Georgia
North Carolina
Virginia

Professional Associations

American Society of Civil Engineers
American Concrete Institute
The Masonry Society
Structural Engineering Institute

Professional Experience

Mr. Ham has over thirty years experience in the practice of structural engineering and is currently the President and Principal Engineer of Ham Engineering, an engineering firm specializing in providing consulting structural engineering, design, drafting, inspection and evaluation of commercial, industrial, and residential projects for architects, contractors, and corporations in the West Virginia region. Previously, as Civil/Structural Department Manager, he was responsible for all civil and structural engineering, design, and drafting done by a major international engineering firm servicing the West Virginia, Ohio, and Kentucky region. Also, he has extensive experience with plant engineering for major manufacturers and local structural steel fabrication companies.

Ham Engineering

Structural Engineering

South Charleston, WV

Ronald L. Manning

Senior Structural Designer

Education

One year college, Kansas City, MO - Machine Drafting and Tool Design

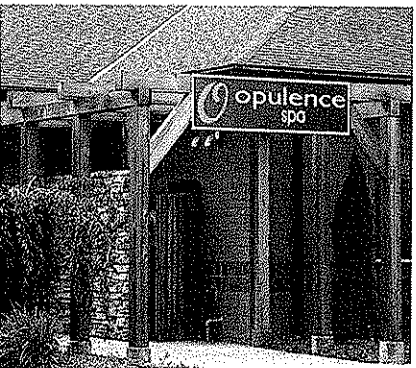
John Brown Quality Training Program

AutoCad R-11 through R-13 John Brown Training

Professional Experience

Mr. Manning has over thirty years experience with industrial, chemical, commercial and residential projects. His responsibilities include design, drafting both manually and using AutoCad, shop fabrication detailing, fieldwork and full support for construction and steel erection.

STICKLER MEDICAL OFFICE



Medical Office and Spa
Northgate Office Park
Charleston, West Virginia

Medical office building and health
spa facility consisting of:

Administrative area
Exam Rooms
Doctors Offices
Education/Classroom Center
Exercise Area/Gym
Spa Area

Size:	13,000 sf
Cost:	\$ 2,000,000
Completion:	2004

VISIONS

A · R · C · H · I · T · E · C · T · S

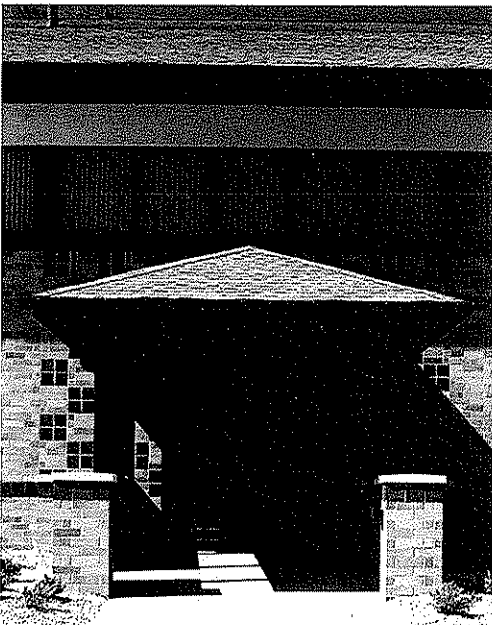


Ream Office Building
Lewisburg, West Virginia

Two-story, 5,000 sf office building and associated site development with 20 parking spaces, and formal entrance design for office and adjacent residential development.

Size: 5,000 sf
Construction Cost: \$ 1,036,000
Completion: 2005

NORTHGATE



One Kenton Drive
Northgate Office Park
Charleston, West Virginia

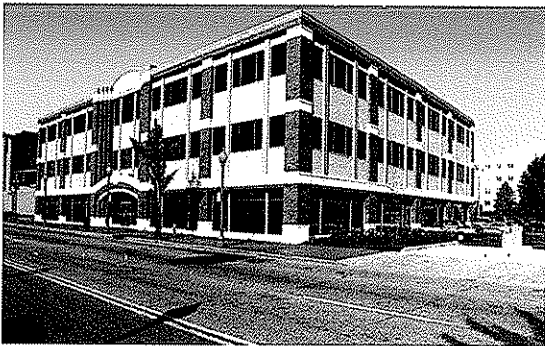
Two stories with individual on grade entries for each floor, building designed to blend with the mountaintop location and to attract local and national tenants.

Size:	14,000 sf
Cost:	\$ 860,000
Completion:	1994

VISIONS

A · R · C · H · I · T · E · C · T · S

SUMMERS SQUARE



Summers Square Office Building
Charleston, West Virginia

Class "A" office space completed in six months in a blighted area of Downtown Charleston. Three-story office building served to anchor further downtown redevelopment and revitalization; designed to complement adjacent downtown structures and facades, and to attract major national tenants like IBM and Merrill Lynch

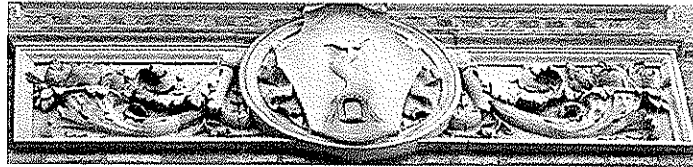
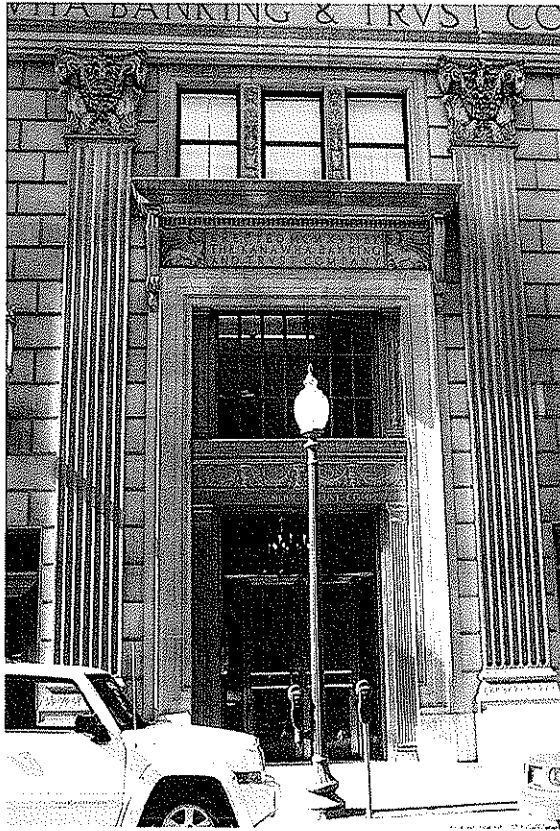
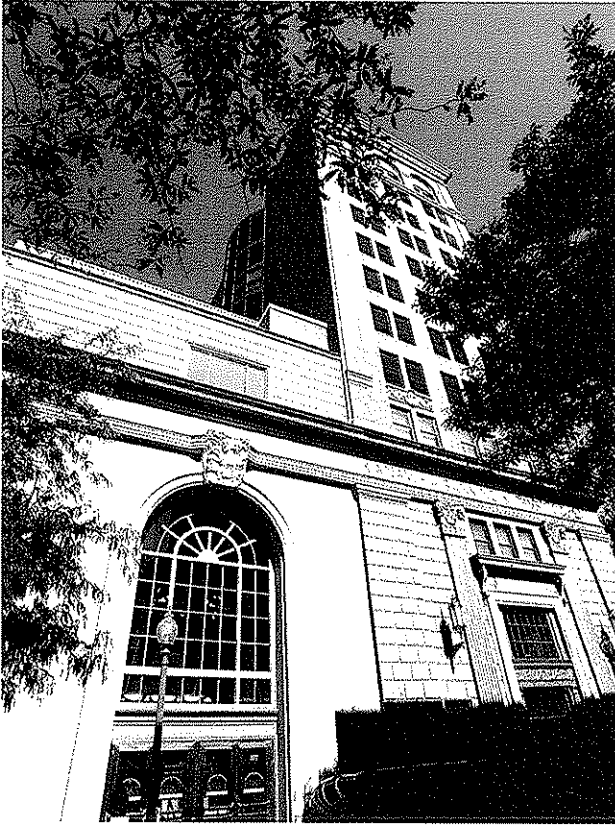
Size:	40,000 sf
Cost:	\$ 1,250,000
Completion:	1994



VISIONS

A · R · C · H · I · T · E · C · T · S

KB&T RENAISSANCE TOWER



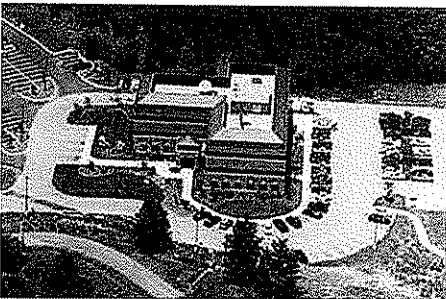
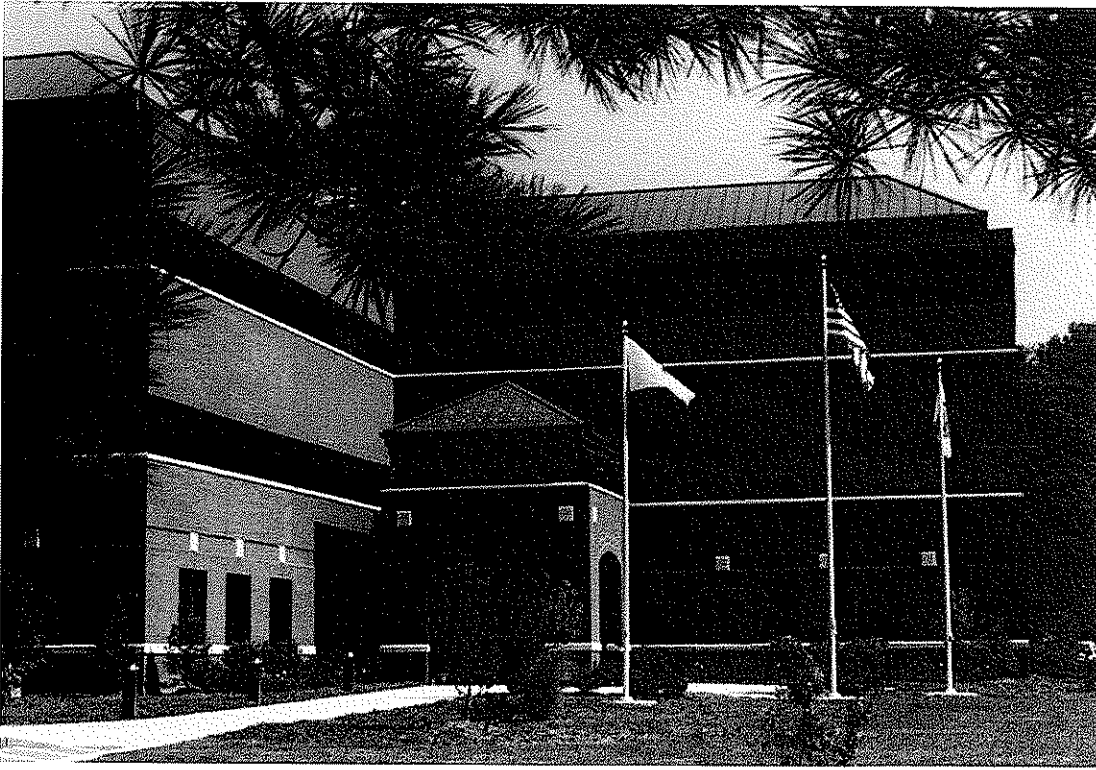
KB&T Renaissance Tower
Charleston, WV

Existing eleven story landmark bank and office building restored and converted into Class A office space and condominiums. Restoration/renovation designed to make the tower completely ADA accessible.

Completion

1999

MARSHALL UNIVERSITY GRADUATE COLLEGE



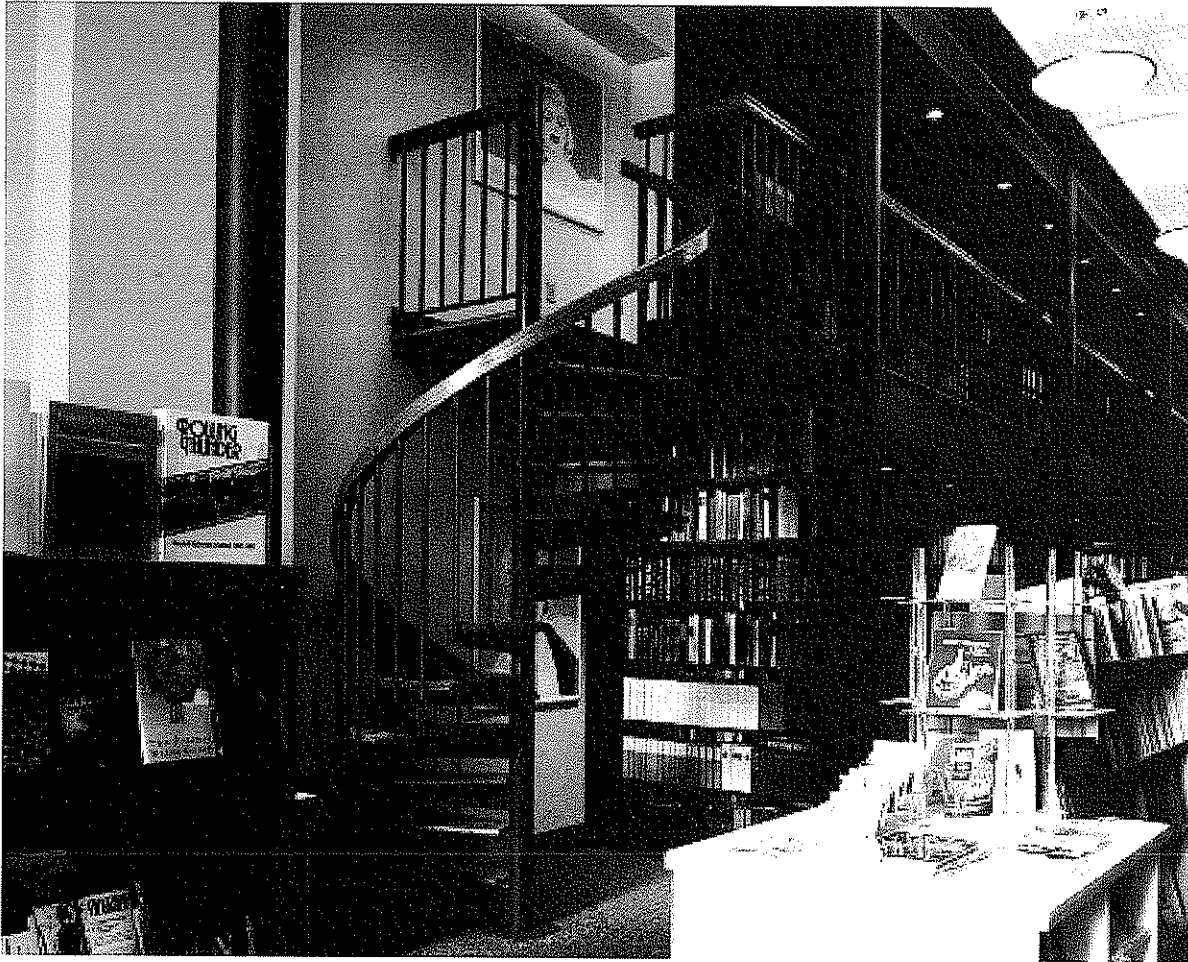
Marshall University
Graduate College
Administration Building
South Charleston, West Virginia

Size: 40,000 sf
Construction Cost: \$ 3,440,000
Completion: 1995

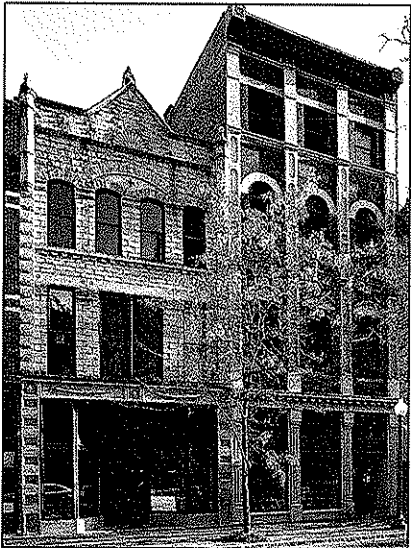
VISIONS

A · R · C · H · I · T · E · C · T · S

McCABE-HENLEY AND ALLEGHENY BOOKS



Allegheny Books Interior



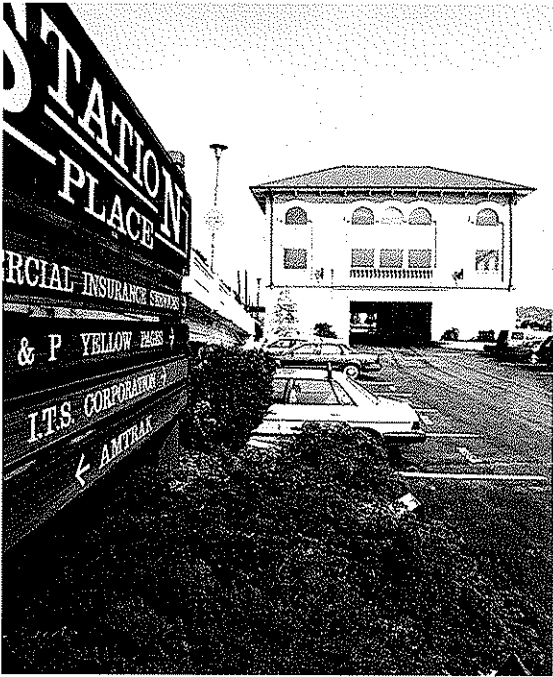
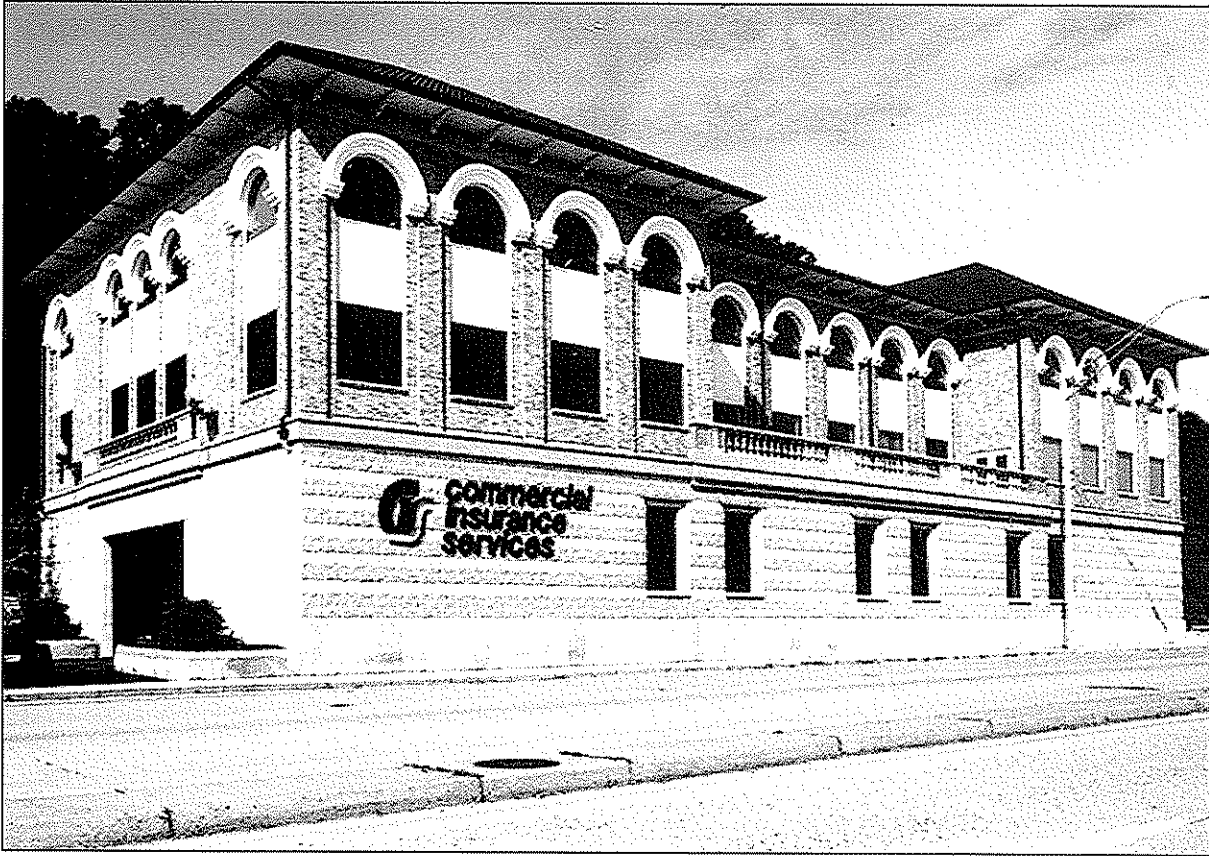
McCabe-Henley Office
Capitol Street
Charleston, West Virginia
Renovation/restoration of a 19th century building
Into class A office space
Cost: \$ 200,000

Trans Allegheny Books
Capitol Street
Charleston, West Virginia
Renovation/restoration of a 19th century building
Into a upscale book store reading room
Cost: \$ 850,000
Completion: 1993

VISIONS

A · R · C · H · I · T · E · C · T · S

COMMERCIAL INSURANCE



Commercial Insurance Services
340 MacCorkle Avenue S.E.
Charleston, West Virginia

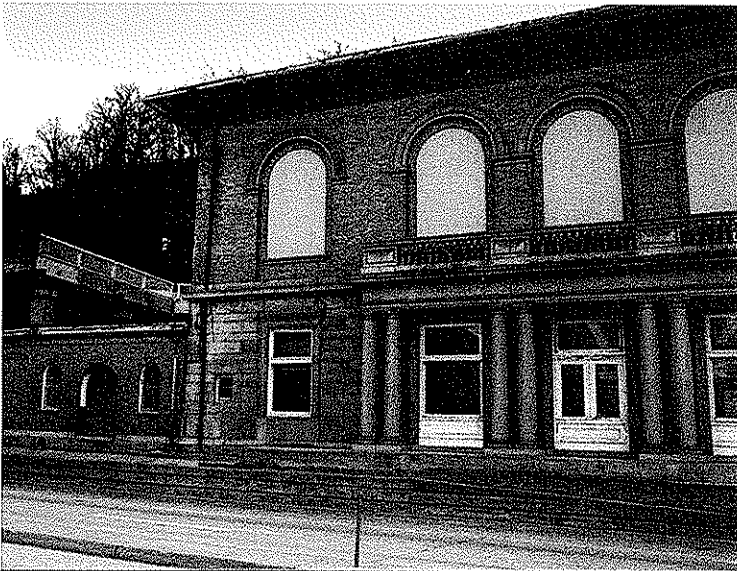
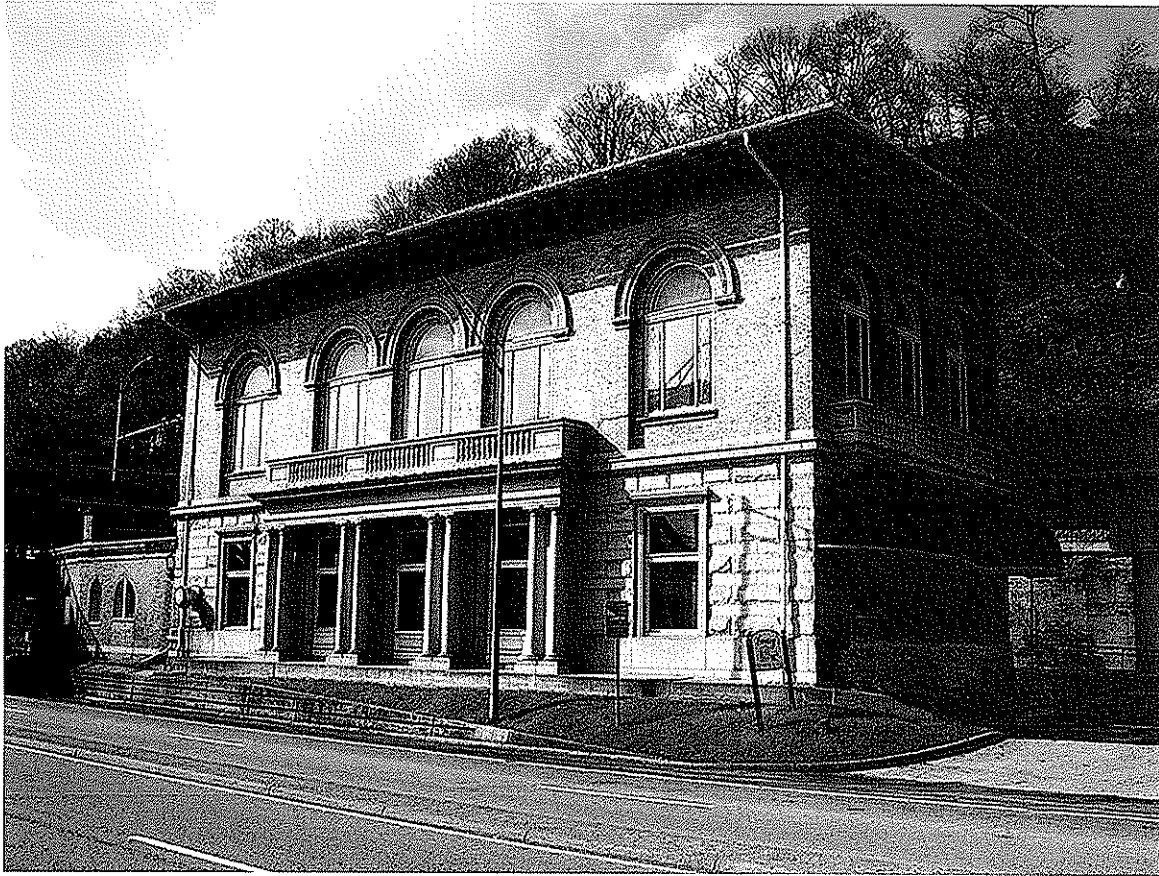
New commercial office building with ground floor parking. Building designed to Complement a 19th century Railroad Station on the same property

Size:	29,305 sf
Construction Cost:	\$ 1,010,000
Completion:	1991

VISIONS

A·R·C·H·I·T·E·C·T·S

C & O TRAIN STATION



C & O Train Station
Restoration/Renovation
Charleston, WV

Multiple use
redevelopment including
Amtrak Station
Commercial Office Space
Restaurant

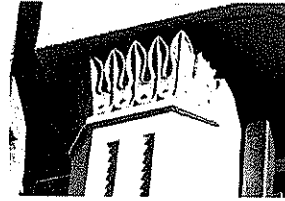
Completion

1990

VISIONS

A · R · C · H · I · T · E · C · T · S

THE GATES BUILDING



The Gates Building
108 ½ Capitol Street

Charleston, West Virginia

Renovation and restoration of a
dilapidated 19th century retail
and office building

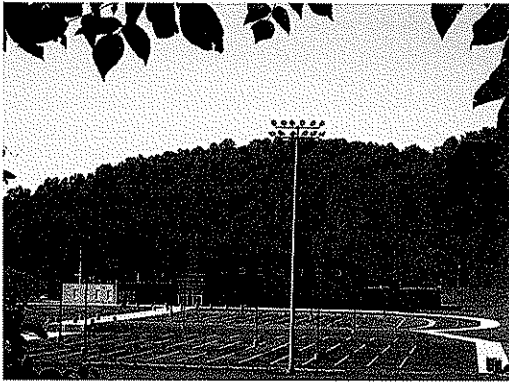
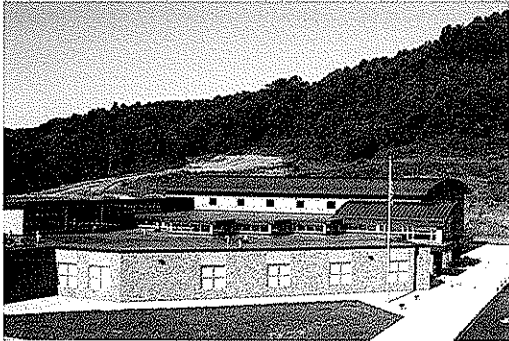
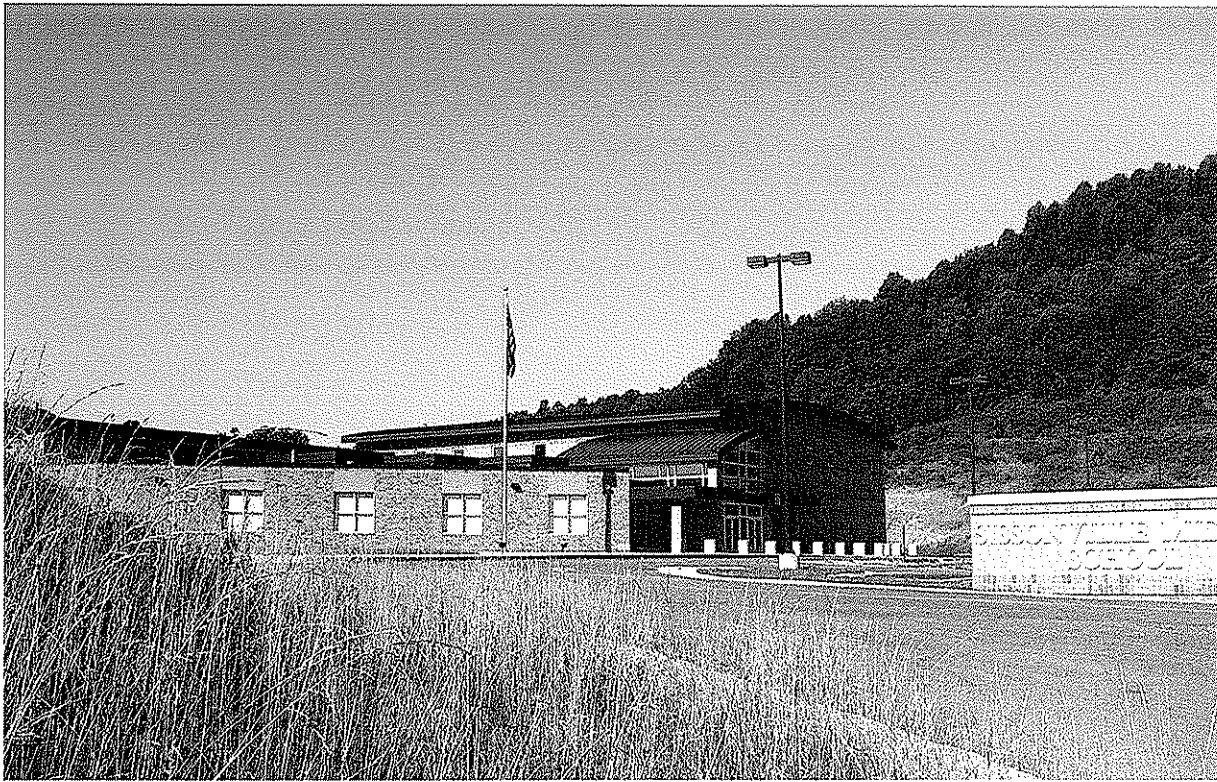
Cost: \$ 550,000

Completion: 1993

VISIONS

A·R·C·H·I·T·E·C·T·S

SISSONVILLE MIDDLE SCHOOL



**Sissonville Middle School
5950 Sissonville Road
Sissonville, West Virginia**

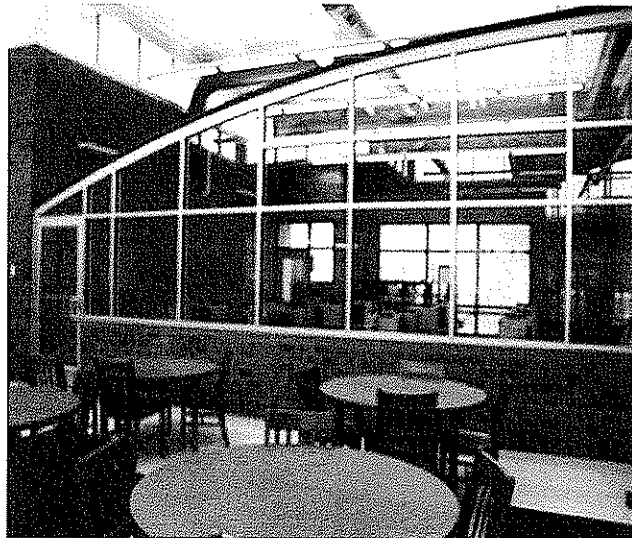
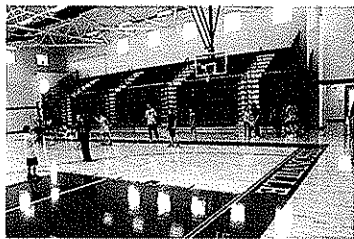
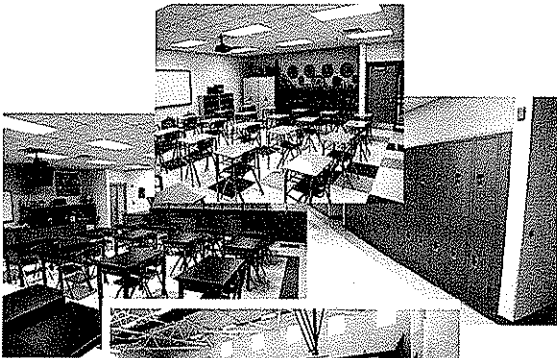
**New construction
consisting of classrooms,
gymnasium,
commons/cafeteria,
kitchen, media center,
administrative offices,
band/choir room, toilets,
and related site work**

**Size: 70,000 sf
Cost: \$ 17,000,000
Completion: 2007**

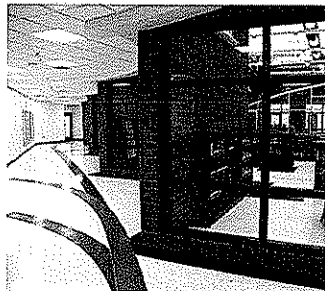
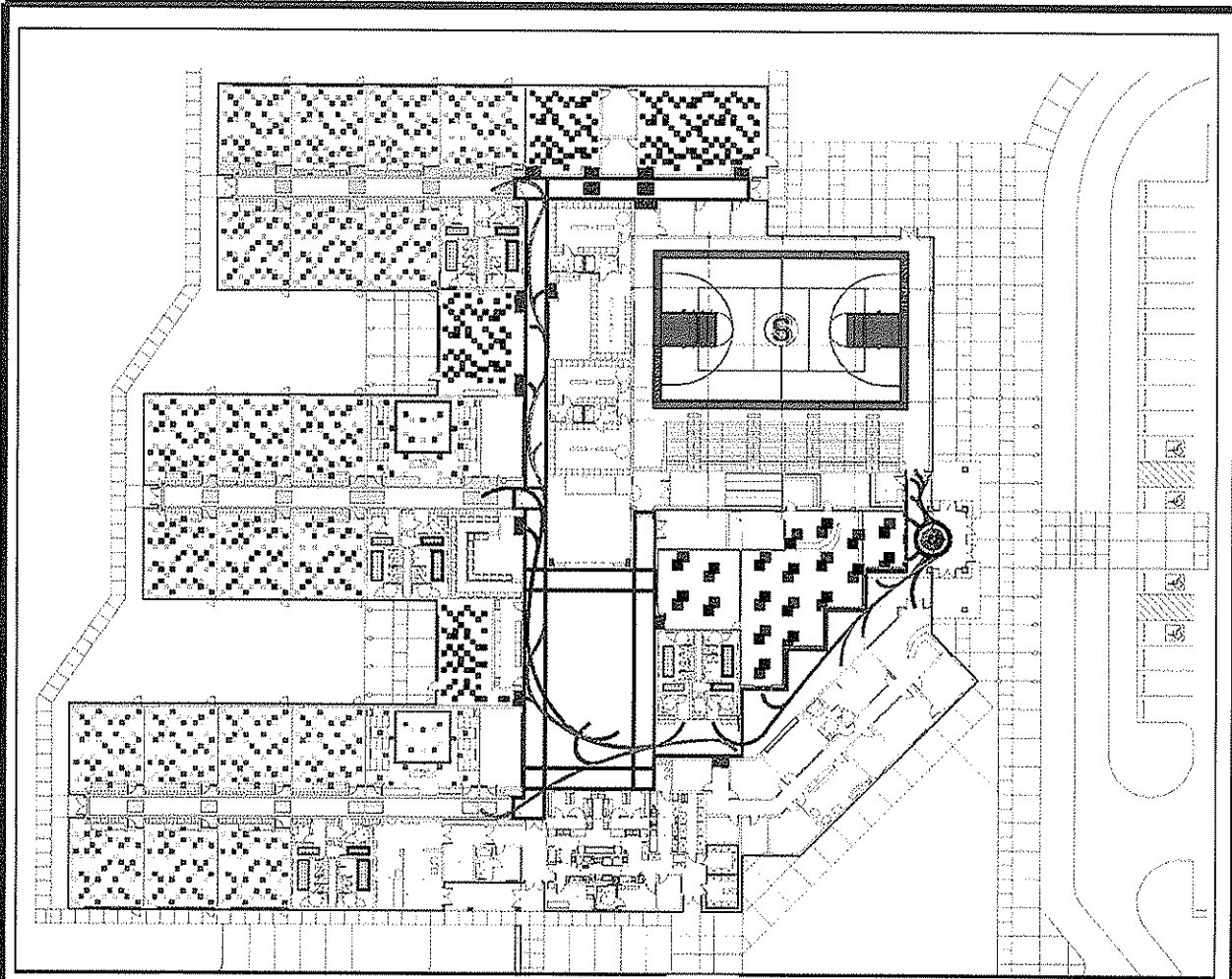
VISIONS

A · R · C · H · I · T · E · C · T · S

SISSONVILLE MIDDLE SCHOOL



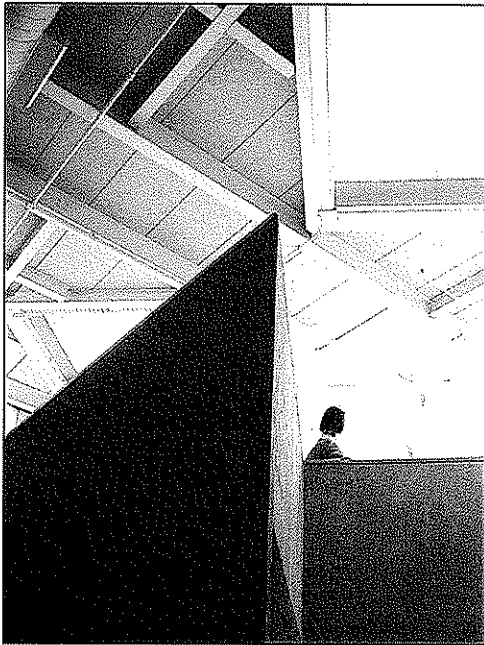
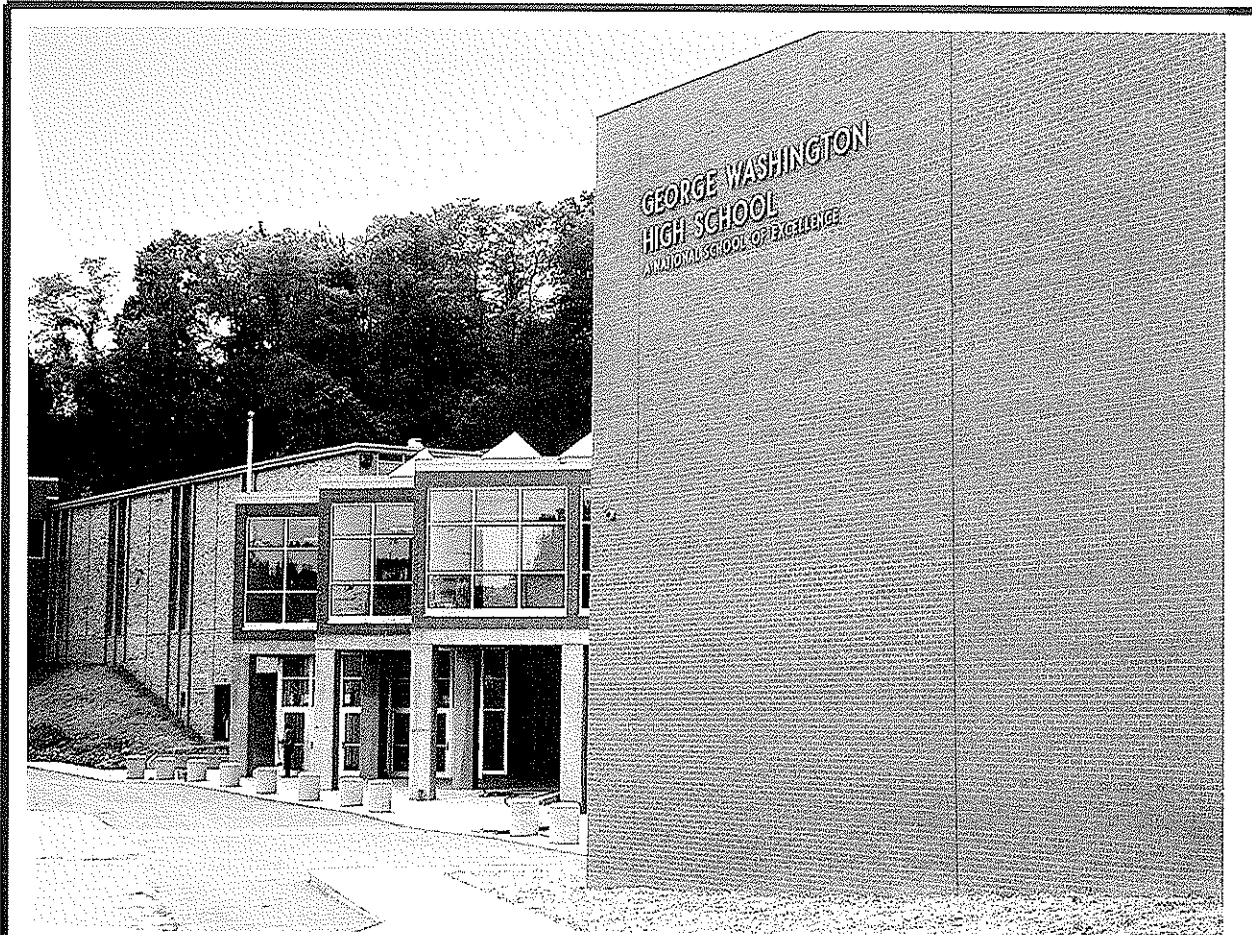
SISSONVILLE MIDDLE SCHOOL



VISIONS

A · R · C · H · I · T · E · C · T · S

GEORGE WASHINGTON HIGH SCHOOL



George Washington High School
1522 Tennis Club Drive
Charleston, West Virginia

New classroom wing with 15 classrooms, two gang toilets, additional commons area with a new entry, an auxiliary gym, and renovations to existing office area, lower level classrooms, library, and miscellaneous area for teacher offices.

Size: Addition /renovation	35,462 sf
	9,000 sf
Construction Cost:	\$ 3,400,000
Completion:	2002

VISIONS

A · R · C · H · I · T · E · C · T · S

SOUTH CHARLESTON PUBLIC LIBRARY



South Charleston Public Library
South Charleston, West Virginia



Before

New main accessible entry, complete interior renovation and reconstruction along with and including new ADA staff and public toilets, stack areas, circulation desk and reading areas, with three small additions to an existing library facility.

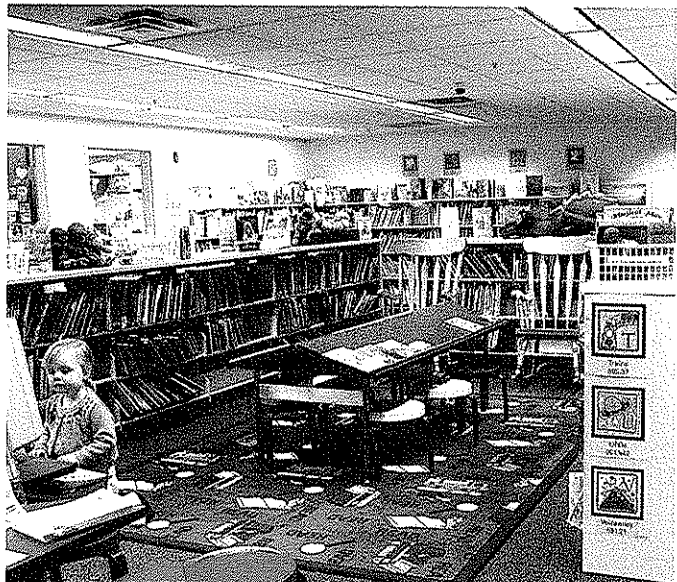
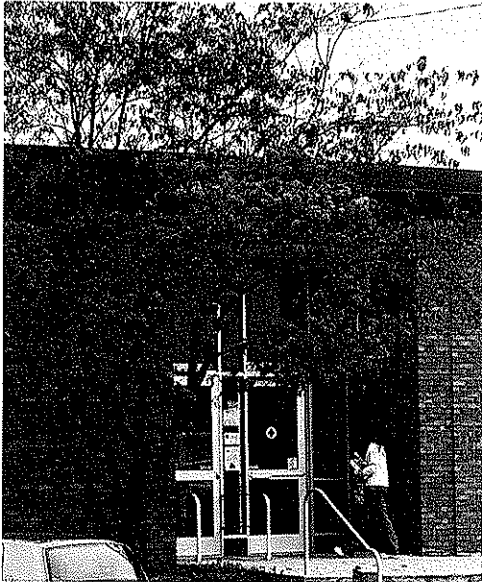
Library remained open during all phases of construction.



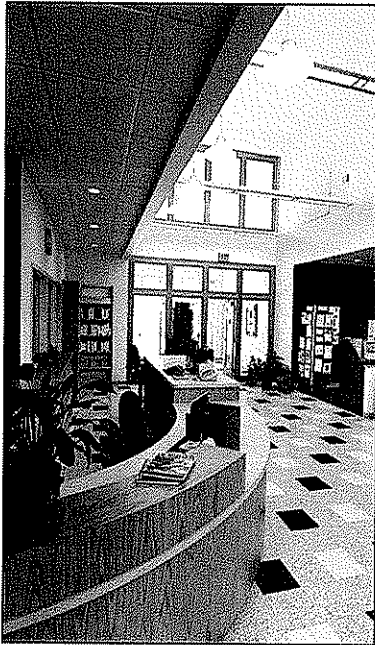
After

Renovations	15,455 sf
Addition	2,396 sf
Construction Cost	\$ 1,200,000
Completion	2003

SOUTH CHARLESTON PUBLIC LIBRARY



SISSONVILLE PUBLIC LIBRARY



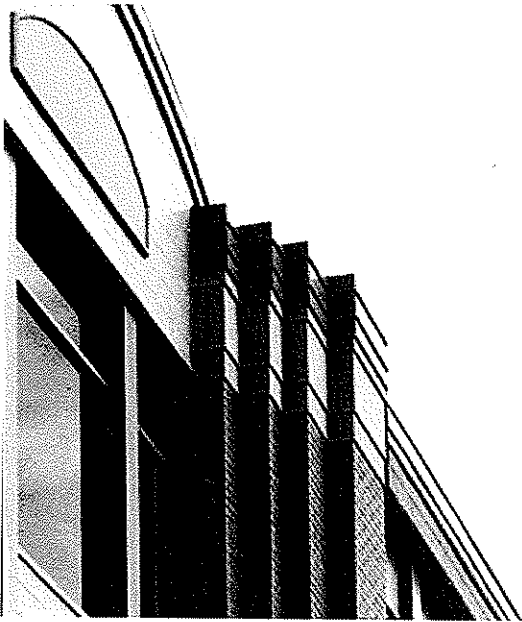
Sissonville Branch Library
One Tinney Lane
Sissonville, West Virginia

Sissonville Branch Library a new prototype, 6,700 square foot one-story branch library for the Kanawha County Public Library system, located in Sissonville, West Virginia.

Size:	6,700 sf
Cost:	\$ 850,000
Completion:	2001

VISIONS

A · R · C · H · I · T · E · C · T · S



N Visions has designed and administered the construction of over 200 million dollars of projects in West Virginia since 1985.

N Visions has experience in a wide range of architectural projects including educational, institutional, healthcare, housing, public and private facilities for developers and non-profits, historic preservation, and residential properties.

Design is the heart of a successful project. It is important to provide the proper aesthetics, functional relationships, space planning, and to be a good neighbor in the community and meet the project budget. N Visions will make certain that your project is successful for both the owner and the community.

NVISIONS

A · R · C · H · I · T · E · C · T · S

FACILITIES PLANNING AND PROGRAMMING

Determining the actual needs of the client and how to adapt them to the available environment is essential for a successful project. N Visions will assist in defining the needs and desires of the client/user prior to the design of the project.

SITE EVALUATION

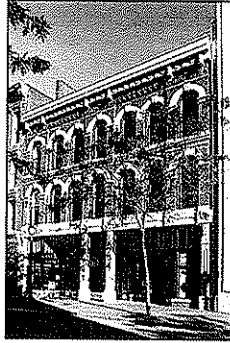
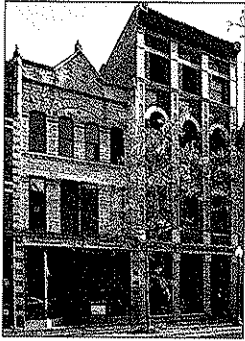
N Visions Architects can provide studies of potential project sites for evaluation by the Owner. Geotechnical, utility, environmental, and property utilization will be evaluated, to allow the Owner to make a site selection decision.

EXISTING FACILITIES EVALUATION

Use of existing facilities requires an educated understanding of potential opportunities and risks that may be encountered. N Visions will assist the Owner in determining how to best enhance the use and reduce the risks to reach a solution.

CODE COMPLIANCE

The State Fire Marshal, School Building Authority, U.S. Army Corps of Engineers, State Historic Preservation Office, and other agencies have specific requirements that must be addressed in all building projects. N Visions has worked with these agencies, and others, on numerous projects, and is familiar with their personnel and regulations. N Visions has a positive working relationship with these agencies, and in many cases involves them early in the design process, which translates into benefits to the Owner.



WVSA Awards

- Trans Allegheny Books, Charleston, WV

WVSA - Honorable Mention

- McCabe-Henley Properties, Inc.
Charleston, WV

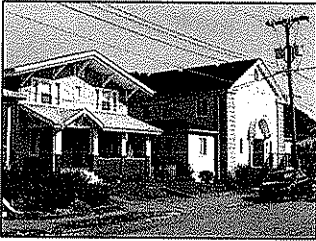
Charleston Renaissance Corporation Best Development

- Capitol City Building, Charleston, WV
- Trans Allegheny Books, Charleston, WV
- 200 Hale Street, Charleston, WV
- The Gates Building, Charleston, WV
- 210 Hale Street, Charleston, WV



WV Home Building Association Best Multi-Family Developer

- Governor's Court Apartments,
Charleston, WV
- Woodbridge Condominiums,
Teays Valley, WV



City of Charleston Distinguished Design Development

- Summers Square, Charleston, WV



HUD – Project of the Year 2000

- YWCA Transitional Housing
Charleston, WV

Associate Builders and Contractors, Inc. 2005 Excellence in Construction

- YWCA Senior Housing
Charleston, WV



AIA West Virginia 2008 Craftsmanship Award for Excellence in Craftsmanship

- Sissonville Middle School

REFERENCES

Chuck Wilson, Kanawha County Board of Education
3300 Pennsylvania Avenue, Charleston, WV 25302, 304-348-6148

New Sissonville Middle School, Sissonville, WV
South Charleston Middle School Elevator, Windows, Toilet Renovation
Montrose Elementary HVAC and Window Replacement
Nitro High School HVAC and Toilets Renovation
Herbert Hoover High School Addition and Renovation
Elkview Middle School Addition and Renovation
South Charleston High School Addition and Renovation
George Washington High School Addition and Renovation
Auxiliary Gyms – Four County high schools
Piedmont Elementary Addition and Renovation

Brooks McCabe, McCabe • Henley
P. O. Box 11108, Charleston, WV 25339, 304-342-4415

Summers Square, Summers and Quarrier streets, Charleston, WV
Capitol City Building, Capitol and Quarrier streets, Charleston, WV
One Kenton Drive, Northgate Office Park, Charleston, WV
KB & T Building, Capitol Street, Charleston, WV
The Strand, Hale Street, Charleston, WV

Rick Atkinson, Central West Virginia Regional Airport Authority,
100 Airport Road, Suite 175, Charleston, WV, 304-344-8033

Yeager Airport Parking Facility
Yeager Airport, John D. Rockefeller IV Terminal
Passenger Access Control and ADA Accessibility

CIMA ENGINEERING

C O R P O R A T E P R O F I L E



Clingenpeel/McBrayer & Associates, Inc.

Services

Clingenpeel/McBrayer & Associates is a West Virginia based small business firm, providing services in the areas of HVAC, plumbing, fire protection and electrical engineering. CMA's founders have long believed in the philosophy that a successful project requires a comprehensive approach. This includes all traditional facets of project planning, starting with master planning, working closely with the client, developing the completed construction documents, bidding the project and contract administration. However, our depth of expertise goes far beyond the traditional services. From developing design criteria for owners to designing the mechanical and electrical systems for the West Virginia DEP Consolidated Office Building, the first LEED certified building in the state, CMA is a proven leader in providing engineering services in the design-build delivery method.

History

Since 1986, Clingenpeel/McBrayer & Associates has provided services on Numerous projects of varying size and complexity. Clients include architects, industrial companies, governmental agencies, contractors, engineers, developers and private organizations. Project locations include West Virginia, Virginia, Ohio, Kentucky, Maryland, Pennsylvania, California and Connecticut.

Commitment

Clingenpeel/McBrayer & Associates' submittal is based on your needs and our experience. Our firm has the experience, service and quality work to create a successful project. We are committing senior design professionals in order to assure you receive top priority. We have extensive experience with projects of this nature. Examples of projects for which we were the Engineer are listed in this proposal.

From an initial staff of five employees in 1986, the company has steadily grown and now has two offices with a staff of eleven- which includes two professional engineers and two engineers-in- training. Facilities and equipment have grown to support CMA's staff and client's needs.

In 1987, computer aided drafting stations were added to provide the best quality and engineering services for our clients. We are currently operating AutoCad 2009. Our firm is constantly monitoring the latest technology, the cost effects and the end results to the final project.

Present staffing allows CMA to complete work in a timely manner without limiting our ability to perform our ongoing work. The staff of CMA is large enough to handle any size project, yet small enough for direct input and supervision by key personnel.

EXPERIENCE

Previous Five Years	1986-1990
Projects:	492
Construction Costs	\$1,100,000,000
MEP Costs:	\$156,039,689.
Total Costs:	\$472,847,542.



Clingenpeel/McBrayer & Associates, Inc.

824 Cross Lanes Drive
Charleston, WV 25313
(304) 343-0316 tel
(304) 343-5146 fax

5 Riddle Court
Morgantown, WV 26505
(304) 598-2558 tel
(304) 598-2472 fax

w w w . c m a w v . c o m

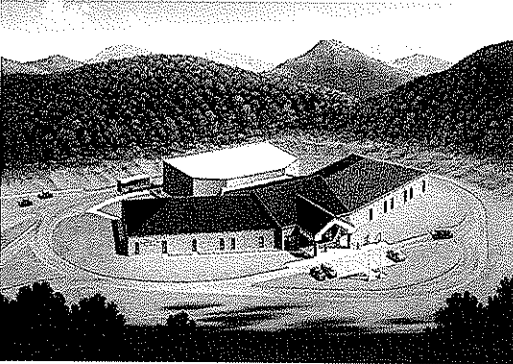
Project Profiles

New Construction



Sissonville Middle School, Kanawha County

CMA Engineering provided mechanical, electrical, plumbing, sprinkler, and data/communication/alarm/control engineering design services for the new, approximately 80,000sf facility, consisting of administrative areas, commons, auditorium, media/technology, sixth, seventh and eighth grade educational areas, laboratories, special education, food services and physical education areas. CMA is currently providing design for the addition of the fifth grade wing.



Talcott Elementary School, Summers County

CMA Engineering provided construction documents for HVAC, plumbing, fire sprinkler, fire alarm, communication, lighting and electrical power systems for new 26,000sf elementary school, consisting of administration areas, pre-kindergarten to fifth grade classrooms, special education, art/music, multi-purpose, dining kitchen and toilet rooms.



Pikeview Middle School, Mercer County

CMA Engineering provided design of HVAC, plumbing, fire alarm, fire sprinkler, electrical, lighting, communications, audio/visual and CCTV systems for new 75,000sf middle school comprised of a main wing with offices and gymnasium and a three-story classroom wing.

Project Profiles

New Construction



WV Department of Environmental Protection

CMA Engineering provided mechanical, electrical, plumbing and fire protection design services for new consolidated DEP office in Charleston, WV. Building is a three-story facility of approximately 180,000sf with a 650 car parking area. This facility is registered as a **LEEDS construction project**.



Mylan Pharmaceuticals, Morgantown, WV

CMA Engineering provided mechanical, electrical, plumbing and fire protection systems design for new corporate office in Morgantown, WV. CMA Engineering also provided engineering services for the 500,000sf addition to the plant facility.



Go-Mart Office Building

CMA provided mechanical, electrical and plumbing design services for the new 13,000sf corporate office building in Gassaway, WV.

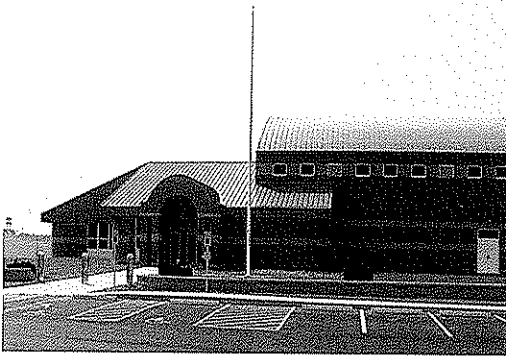
Project Profiles

New Construction



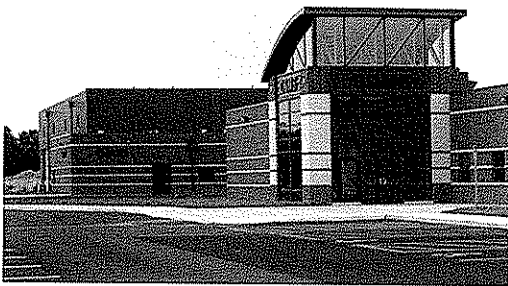
WVANG Summersville Readiness Center

CMA Engineering provided engineering services for the design of mechanical, electrical and plumbing systems for the 42,000sf readiness center. This facility also features areas for use by the City of Summersville for events throughout the year.



WVANG Lewisburg Readiness Center

CMA Engineering provided mechanical, electrical and plumbing design services for a 37,000sf readiness center that includes a vehicle maintenance bay.

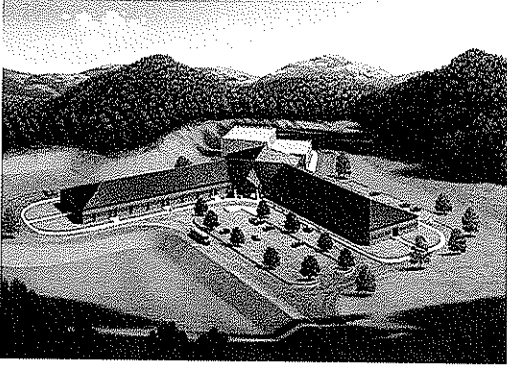


WVANG Eleanor Maintenance Center

CMA Engineering provided mechanical, electrical and plumbing, design services for a 132,000sf maintenance facility to house combined support maintenance shop and Class IX USPFO warehouse. CMA has continued to provide engineering services for the addition of the paint booth, entrance guard house, MCOFT pad, and covered storage.

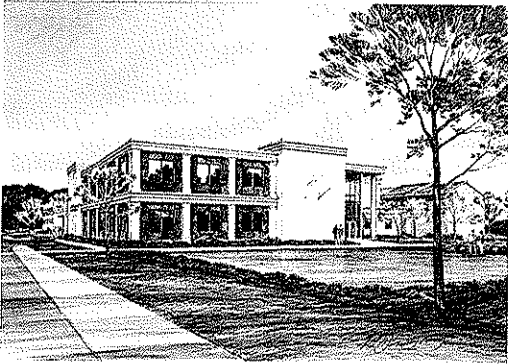
Project Profiles

New Construction



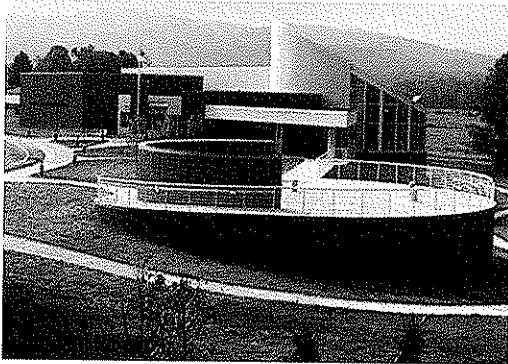
Fairdale Elementary School, Raleigh County

CMA Engineering provided design of HVAC, electrical and lighting, fire alarm, communications and fire sprinkler systems for new 51,500sf elementary school, consisting of administration areas, classrooms, dining, kitchen, toilet rooms and gymnasium.



Ayash Community Center, St. Albans

CMA Engineering provided design for HVAC, plumbing, fire sprinkler, fire alarm systems, communication systems, lighting and electrical power for new 26,900sf community center which included gymnasium, wrestling room, fitness room, locker rooms and an open area for aerobics, dance and gymnastics.



NRAO Greenbank Observatory Visitor's Center

CMA Engineering provided mechanical, electrical, plumbing, fire protection and communication systems design for new visitor's science center.

References

Mechanical/Electrical/Plumbing



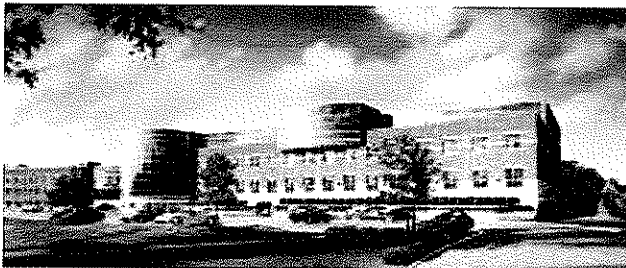
West Virginia University
P.O. Box 0877
Morgantown, WV 26505
Contact: Mr. John Thompson
(304) 293-3625



Kanawha County Schools
3300 Pennsylvania Avenue
Charleston, WV 25302
Contact: Mr. Charles Wilson
(304) 348-6148



State of West Virginia
1900 Kanawha Blvd, East
Bldg. 1, Room MB-60
Charleston, WV 25305
Contact: Mr. Robert Kilpatrick
(304)558-0250



Mylan Pharmaceuticals, Inc.
P.O. Box 4310
Morgantown, WV 26504
Contact: Mr. J. J. Dotson
(304) 599-2595

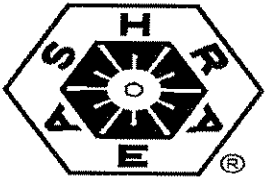
Professional Affiliations



Leadership in Energy &
Environmental Design
(LEED)



U.S. Green Building
Council
(USGBC)



American Society of
Heating, Refrigerating and
Air Conditioning Engineers,
Inc.,
(ASHRAE)



American Institute of
Architects— WV Chapter
Affiliate Member
(WVAIA)



National Fire
Protection Association
(NFPA)

ASPE

American Society Of
Plumbing Engineers
(ASPE)



MasterSpec
Specifications
(ARCOM)



The
LIGHTING
AUTHORITY (IES)

Illuminating
Engineering Society



WV Society of
Healthcare Engineers
(WVSHE)



Business Partner



International Code Council (ICC)

CMA
ENGINEERING

Ham Engineering

Structural Engineers
South Charleston, WV

Project Experience

Ham Engineering is normally retained as the structural consultant for the Owner, the Architect or the General Contractor on a project. The majority of the structural engineering performed by our firm involves projects in the commercial, retail, educational, industrial, and residential areas. The following is a partial list of commercial projects completed within the last five years. A list of other projects in the educational, industrial, and residential areas can be provided.

Sissonville Middle School Sissonville, WV

New Educational Facility with three wings of classroom space and including a student commons area, administration offices, media center/library, dining area, and a gymnasium. One story steel frame and load bearing masonry walls. Due to soils concerns at the site, the foundation design included a stiffened mat type foundation to resist settlement and cracking.

Elkview Middle School Elkview, WV

Additions to an Existing Educational Facility. Included additional classroom space, relocated stair towers, and expansion of both the dining area and the mediacenter/library area.

Piedmont Elementary Addition Charleston, WV

Classroom and multi purpose room addition to existing building. Two story steel and masonry structure with concrete floors.

Ham Engineering Project Experience, Cont'd

WOWK Television Building 13 Kanawha Boulevard Charleston, WV

Television Studio and offices. Three story steel frame with concrete floors on joists. Spread foundations. Unusual floor plan with 45 degree corners. Project was done as Design Build with General Contractor as prime.

Tri State Racetrack and Gaming Addition Cross Lanes, WV

Video Gaming Facility and Offices. One story steel frame addition with concrete slab on grade that included prefabricated electrical and data duct ways. Project also include several elevated performance areas, overhead access ways, and a shop fabricated steel tube truss pedestrian bridge with escalator from elevated parking area.

Holiday Inn Civic Center Huntington, WV

Hotel and related facilities. Five story masonry building with prestressed precast concrete plank floors. Steel framed entry canopy.

USPS Post Office Beckley, WV

Post Office. One-story steel frame supporting built-up roof with exterior brick veneer walls. Exterior loading docks for variable size trucks.

USPS Post Office Princeton, WV

Renovation of Existing Building for New Post Office. Existing one-story steel frame supporting built-up roof with exterior brick veneer walls. Modified to include two new exterior loading dock areas for variable size trucks and roof modifications for new HVAC systems.

Ham Engineering Project Experience, Cont'd

Charleston Fire Station Corridor G Charleston, WV

Fire Station. One story wood framed building with wood floor joists. Partial second floor.

BIDCO Shell Building Southridge Center Charleston, WV

Shell building for future business relocations to Charleston. One-story industrial/warehouse space with an office wing and a future office mezzanine level. Structural steel frame supporting a built up roof on joists with masonry exterior walls.

City Holding, Inc. Cross Lanes, WV

General offices for bank processing. Three story with partial basement. Structural steel frame with concrete floors on joists. Caission foundations due to extremely poor soil conditions.

Caperton Center WVU Parkersburg Parkersburg, WV

Classrooms, labs, and office space. Two story steel framed with concrete floor on joists. Extensive use of curved and intersecting exterior walls.

Buckingham Square Grand Cayman, BWI

Bank with general office space on second floor. Two story structural steel moment frame with concrete floors on steel joists. Designed for hurricane force winds.

Ham Engineering Project Experience, Cont'd

Medical Office Building Division Street South Charleston, WV

Medical offices located across from Thomas Memorial Hospital. Three story steel frame with concrete floors on joists.

FOG Building MacCorkle Avenue South Charleston, WV

Medical and General offices located near Thomas Memorial Hospital. Four story steel frame with concrete floors on joists.

G&G Building Scott Depot, WV

Office Building. Four story steel moment frame with concrete floor on joists. Set backs at each corner complicated the structural design.

Skaff Medical Building Charleston, WV

Medical Office Building. One story masonry building supporting a built up roof on steel joists.

Capital State Bank Southridge Center, Charleston, WV

Building houses a bank on the lower floor and office space on the second floor. Two story wood structure with wood and gypcrete floors.

Ham Engineering Project Experience, Cont'd

Estes Medical Building Scott Depot, WV

Medical office building near the Putnam County General Hospital. Three story steel framed with concrete floors on joists.

Charter Communications Building Scott Depot, WV

General Office Building. Three story steel moment frame supporting concrete floors on steel joists. Building designed for a future fourth floor.

Musselman Middle School Berkley County, WV

Classrooms, labs, and other related educational facilities. Two story steel and masonry structure with concrete floors on joists.

American Freightways Terminal Nitro, WV

Truck terminal. One story steel moment frame on concrete slab.

Family Enrichment Center Patrick Street Charleston, WV

Community space and related offices. Renovations and additions at the former West Virginia Tractor Building. One story steel frame with built up roof on steel joists. Partial second floor.

STATE OF WEST VIRGINIA
Purchasing Division

PURCHASING AFFIDAVIT

West Virginia Code §5A-3-10a states: No contract or renewal of any contract may be awarded by the state or any of its political subdivisions to any vendor or prospective vendor when the vendor or prospective vendor or a related party to the vendor or prospective vendor is a debtor and the debt owed is an amount greater than one thousand dollars in the aggregate.

DEFINITIONS:

"Debt" means any assessment, premium, penalty, fine, tax or other amount of money owed to the state or any of its political subdivisions because of a judgment, fine, permit violation, license assessment, defaulted workers' compensation premium, penalty or other assessment presently delinquent or due and required to be paid to the state or any of its political subdivisions, including any interest or additional penalties accrued thereon.

"Debtor" means any individual, corporation, partnership, association, limited liability company or any other form or business association owing a debt to the state or any of its political subdivisions. "Political subdivision" means any county commission; municipality; county board of education; any instrumentality established by a county or municipality; any separate corporation or instrumentality established by one or more counties or municipalities, as permitted by law; or any public body charged by law with the performance of a government function or whose jurisdiction is coextensive with one or more counties or municipalities. "Related party" means a party, whether an individual, corporation, partnership, association, limited liability company or any other form or business association or other entity whatsoever, related to any vendor by blood, marriage, ownership or contract through which the party has a relationship of ownership or other interest with the vendor so that the party will actually or by effect receive or control a portion of the benefit, profit or other consideration from performance of a vendor contract with the party receiving an amount that meets or exceed five percent of the total contract amount.

EXCEPTION: The prohibition of this section does not apply where a vendor has contested any tax administered pursuant to chapter eleven of this code, workers' compensation premium, permit fee or environmental fee or assessment and the matter has not become final or where the vendor has entered into a payment plan or agreement and the vendor is not in default of any of the provisions of such plan or agreement.

Under penalty of law for false swearing (*West Virginia Code §61-5-3*), it is hereby certified that the vendor affirms and acknowledges the information in this affidavit and is in compliance with the requirements as stated.

WITNESS THE FOLLOWING SIGNATURE

Vendor's Name: N VISIONS ARCHITECTS

Authorized Signature: [Signature] Date: 2/23/10

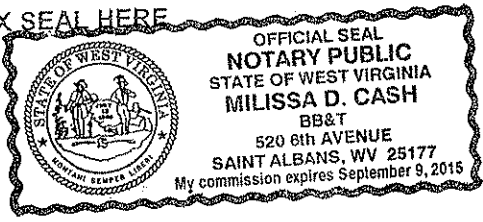
State of West Virginia

County of Kanawha, to-wit:

Taken, subscribed, and sworn to before me this 23rd day of Feb, 2010.

My Commission expires Sept. 9, 2015

AFFIX SEAL HERE



NOTARY PUBLIC [Signature]