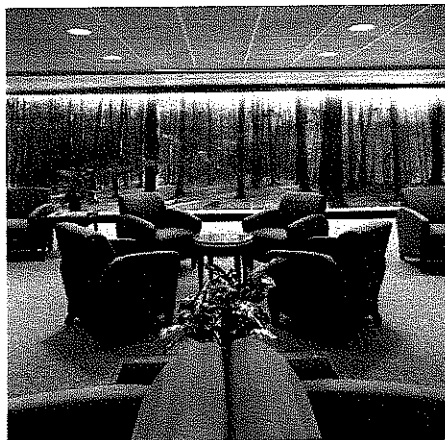
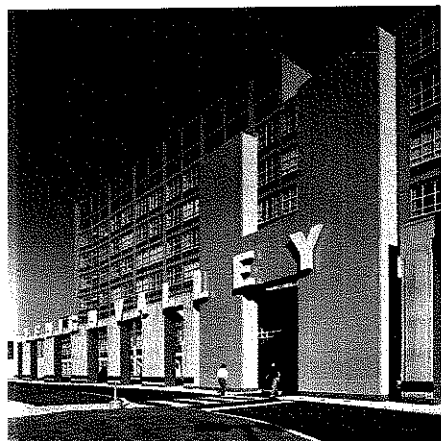


Architectural and Engineering Services for New Patient Care Unit



WILLIAM R. SHARPE JR. HOSPITAL
WESTON, WEST VIRGINIA
WSH90086

DECEMBER 4, 2008





Kreps and Zachwieja
300 Capital Street, Suite 1710
Charleston, WV 25301

FreemanWhite, Inc.
8845 Red Oak Blvd.
Charlotte, NC 28217

December 4, 2008

Ms. Roberta Wagner
Purchasing Division
2019 Washington Street, East
Charleston, West Virginia 25305-0130

Re: Professional Architectural and Engineering Services
New Patient Care Unit
William R. Sharpe, Jr. Hospital

Dear Ms. Wagner:

The task of designing your new physical environment represents an opportunity to evaluate and redesign the way your staff works and provides care. Our interest goes beyond aesthetic appearance and image. Our focus during planning and design is on *William R. Sharpe, Jr. Hospital's* operations, the way your staff works and the experience your patients and their families have as they embark on the journey back to health. We will encourage your staff to challenge their assumptions, the way they work, and the way they deliver care with the goal of helping them create a solution that effectively responds to their daily challenges. Our end goal is the same as with every endeavor – to *focus on William R. Sharpe, Jr. Hospital's clinical and operational success.*

While the impact of meaningful therapeutic design can have extremely important benefits to the patient, a successful psychiatric hospital must also consider important elements related to physicians and staff. Providing a safe, secure and efficient environment for clinicians and patients is vital. Design elements related to strong visual supervision of clinical areas, and reduced travel distances for staff to common areas are extremely important.

While the design of any patient environment is always a central parameter, it is even more so in a psychiatric hospital. The provision of abundant natural light in the patient's bedroom and common areas, friendly color ways and travel paths, and acoustical sensory control can all have a very beneficial impact.

Providing a sense of control and familiarity for patients and their families is also a critical design element. Components like computer stations (where treatment allows) and meal preparation areas on the unit can be of great significance.

Areas of special consideration must also be addressed in a sensitive and appropriate manner. Controlled entrances to the unit, laminated glass in windows, double acting door hardware, reinforced demising partitions, break away bathroom hardware, and well designed seclusion spaces are all vital elements for patient safety and security.



Ms. Roberta Wagner
December 4, 2008
Page Two

To create a preeminent patient unit for the William R. Sharpe, Jr. Hospital, the planning and design team needs to understand how the physical design will support the mission, vision, and treatment goals of your organization. In addition, the design must facilitate operational efficiency and unsurpassed Patient, Physician, and Staff satisfaction in a “singular” environment. The team of Kreps & Zachwieja/FreemanWhite brings the unsurpassed expertise to deliver consulting and design services that meets these goals.

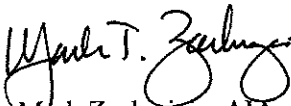
Kreps & Zachwieja has long standing legacy of delivering state-of-the-art design to healthcare facilities in West Virginia and the surrounding region. This experience, combined with their exemplary record with State and Local review authorities, offers William R. Sharpe, Jr. Hospital a solid record of achievement from a local firm.

FreemanWhite is a consulting and design firm that changed the face of architecture over fifteen years ago. After having delivered traditional architectural services for over 116 years (since 1892), FreemanWhite redesigned our firm to include a focus on strategic planning, operational redesign, and technology integration as significant drivers of design. In addition to our excellent medical planners and designers, our “non-traditional” staff includes clinical personnel, process improvement experts, reimbursement and business analysts, research analysts, operational computer simulationists, and technology planners. This entire design team will be focused on the business and operational issues of delivering advanced psychiatric services, and translating those issues into inspiring design work for your project.

Kreps & Zachwieja/FreemanWhite understands the challenges the William R. Sharpe, Jr. Hospital will face. This team has worked together for the benefit of many clients and projects in West Virginia; and we have immensely enjoyed our working relationship and the mutual clients that we serve. It is our sincere hope that you and your staff understand our commitment to excellence as you review this proposal. As always, our clients’ best interests remain at the heart of what we do.

Thank you, in advance, for considering the Kreps & Zachwieja/FreemanWhite Team.

Sincerely,


Mark Zachwieja, AIA
President
Kreps and Zachwieja


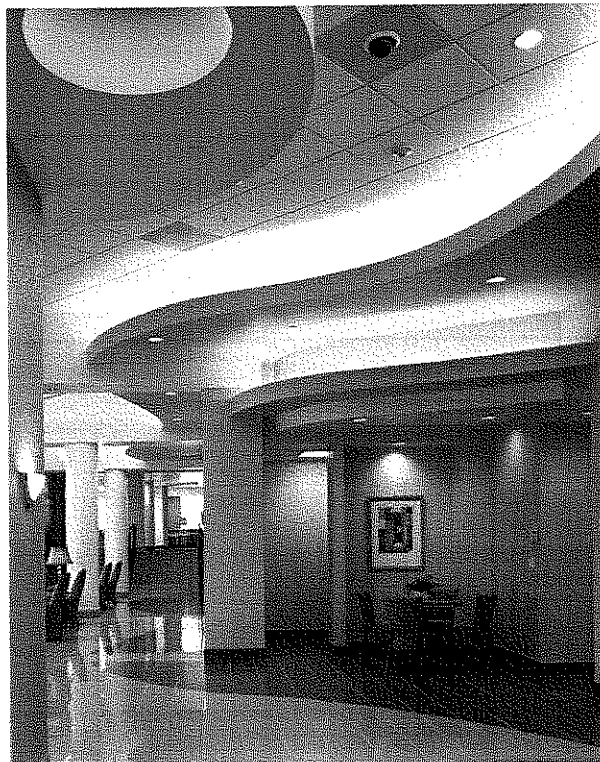

Bruce W. Moore, AIA
Principal
FreemanWhite Inc.



TABLE OF CONTENTS

1. EXPERIENCE
2. STAFF AND RESOURCES
3. CONSTRUCTION MANAGEMENT
4. PERMITTING & REGULATORY AGENCIES
5. APPENDIX
 - A. APPENDUM NO. 2 ACKNOWLEDGEMENT
 - B. PURCHASING AFFIDAVIT





EXPERIENCE



FIRM OVERVIEWS

WHY KREPS AND ZACHWIEJA/FREEMANWHITE?

Kreps and Zachwieja/FreemanWhite began collaboration on St. Mary's Hospital projects in Huntington, WV, in early 2002. The success of this specific collaborative effort formed a bond between the two organizations that has since led to projects for King's Daughters Medical Center in Ashland, KY; Thomas Medical Center in South Charleston, WV; and several additional projects at St. Mary's Hospital. The William R. Sharpe Jr. Hospital project is uniquely positioned to take advantage of this group of design professionals who have had an ongoing relationship for the past six years. Realizing the similarity of common strategic mission and the desire to serve the healthcare organizations in West Virginia with the best operational and design expertise available, we continue to provide these services as an integrated team.

ABOUT KREPS AND ZACHWIEJA

Kreps and Zachwieja has provided outstanding professional services to healthcare clients since its founding in 1945 as Vecellio & Kreps. Recognized for our quality service, expertise, and longevity, Kreps and Zachwieja focuses on the quality of our designs, the accuracy of our construction documents, and the functional relevance of our planning.

Their full service capabilities enable the firm to follow projects through all phases, from planning to construction and maintenance. And with their diverse project experience, they understand how to focus staff and resources to meet clients' individual needs, schedules, and locations. A representative listing of recent healthcare projects includes:

- Blaydes Eye Clinic, Bluefield, WV
- Clay Primary Care Health Clinic, Clay, WV
- Concord University, Athens, WV
- Elkins Regional Convalescent Center, Elkins, WV
- King's Daughters Medical Center, Ashland, KY
- Metro 911 Communications, Charleston, WV
- Montgomery General Hospital, Montgomery, WV
- St. Joseph's Hospital, Buckhannon & Parkersburg, WV
- St. Mary's Medical Center, Huntington, WV
- Summersville Memorial Hospital, Summersville, WV
- Thomas Memorial Hospital, South Charleston, WV
- Valley Health Medical Center, South Charleston, WV
- Valley Health Medical Center, Gauley Bridge, WV
- Veterans Administration Medical Center, Beckley, WV
- Veterans Administration Medical Center, Huntington, WV

ABOUT FREEMANWHITE

Healthcare planning in the 21st century is now an integrated process that establishes priorities, tests their validity, analyzes their market depth, and applies a flexible, responsible facilities planning solution. FreemanWhite is a healthcare consulting and design firm with a diverse group of professionals focused on each client's unique priorities, vision, and market position. FreemanWhite's guiding philosophy is *Innovative Solutions – Measurable Results*. We focus on bringing our clients the most innovative solutions that will directly deliver measurable results. Each FreemanWhite solution is measured on how it results in elevating our clients' business successes.

FreemanWhite believes the future of healthcare architecture involves physical design solutions that support a client's overall strategic vision while delivering an environment that supports efficient and streamlined operations. Design for healthcare must embrace the human condition, from birth to senior health. Quality healthcare design serves to sustain and support providers, patients, families, and the community at large.

FreemanWhite's holistic design process produces exceptional solutions based on the fundamentals of integrating clinical and operational needs into the physical design. With a clear understanding of clinical goals and operational drivers, we incorporate healing design tenets into our architectural solutions.

ABOUT SCHEESER BUCKLEY MAYFIELD

Founded in 1958, Scheeser Buckley Mayfield has led the industry in innovation, quality and creativity. Their mechanical and electrical systems designs meet the most demanding operational requirements and help define the personality and character of the building, contributing to the total building experience.

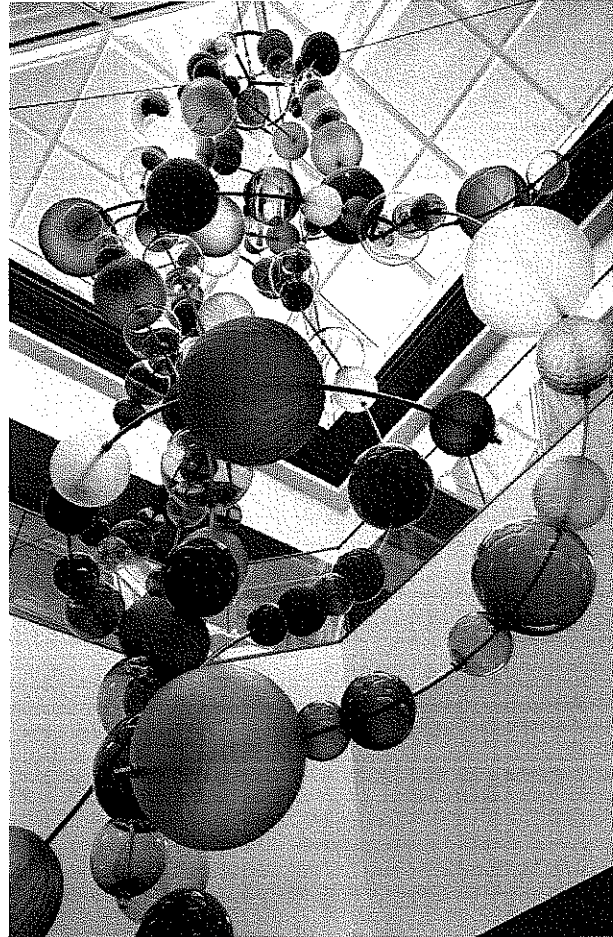
Every Scheeser Buckley Mayfield mechanical and electrical system is designed in harmony with the entire building, so all systems flow and work together efficiently. As an integral part of the building design team, they strive to create systems that fit naturally into the building's character and comfortably into the overall budget. The design teams take this responsibility seriously and do what is necessary to design systems that fit clients' needs.



ABOUT STEVEN SCHAEFER ASSOCIATES

Founded in 1976, Steven Schaefer Associates has offices in Cincinnati and Columbus, OH, is licensed in every state, and is LEED® accredited. With thirty-three engineers and a drafting staff of seventeen, Steven Schaefer Associates has the ability to meet strict project deadlines and the flexibility to respond to change. Their knowledge of building codes allows their designers to select the most appropriate design parameters for optimal structural efficiency and performance, meet established budgets, and avoid costly overly-conservative construction. A representative listing of the firm's healthcare experience includes:

- King's Daughters Medical Center Heart Center, Ashland, KY
- King's Daughters Medical Center Medical Plaza Building B, Ashland, KY
- King's Daughters Medical Center Outpatient Imaging Center, Ashland, KY
- McCullough-Hyde Memorial Hospital, Oxford, OH
- Thomas Memorial Hospital Imaging Center, South Charleston, WV
- Thomas Memorial Hospital Clinical Pavilion, South Charleston, WV
- St. Mary's Hospital Intensive Care Unit Addition, Huntington, WV





DESIGN SERVICES OFFERED

The Kreps and Zachwieja/FreemanWhite experience is based upon in-depth knowledge, passion, and excitement. We intensely listen to our clients while providing challenging leadership for each engagement. Our unique problem solving process generates exciting new solutions while building consensus among stakeholders and includes the following services:

OPERATIONS

Process Improvement

Comprehensive development of an evaluation and plan to improve efficiency and/or effectiveness in the operation of a function, department, or facility.

Work Flow Mapping

Information gathering to document existing function and development of a flow diagram to describe operations graphically.

Computer Modeling

Putting work flow map into computer simulation, incorporating trends in function, and evaluating existing and alternative scenarios to compare efficiency and effectiveness.

Operational Analysis

Review of existing process and recommendations by an operational expert(s).

Materials Movement

Analysis of the movement of materials through a process; accomplished by expert analysis, computerized modeling, or both.

FACILITIES

Master Planning

Development of a plan to utilize all physical properties in order to respond most effectively to the strategic goals and objectives of the institution.

Facility Assessment

Evaluation of existing amount, type, and condition of existing buildings and property of an institution.

Planning

General analysis and layout of functions to be located in a facility.

Programming

Development of areas for each space in a department based on projected utilization.

Design

Includes elements of detailed planning of the facility, how the building is shaped in all three dimensions, what materials are used, and how these materials are expressed in the building.

Equipment Planning

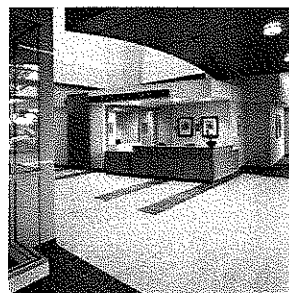
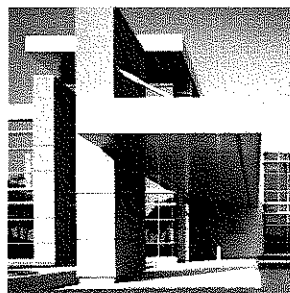
Assisting in the selection of non-furnishing items of medical equipment.

Scheduling

Development of detailed schedules for the project when complex phasing is required in the construction phase or coordination of the trades.

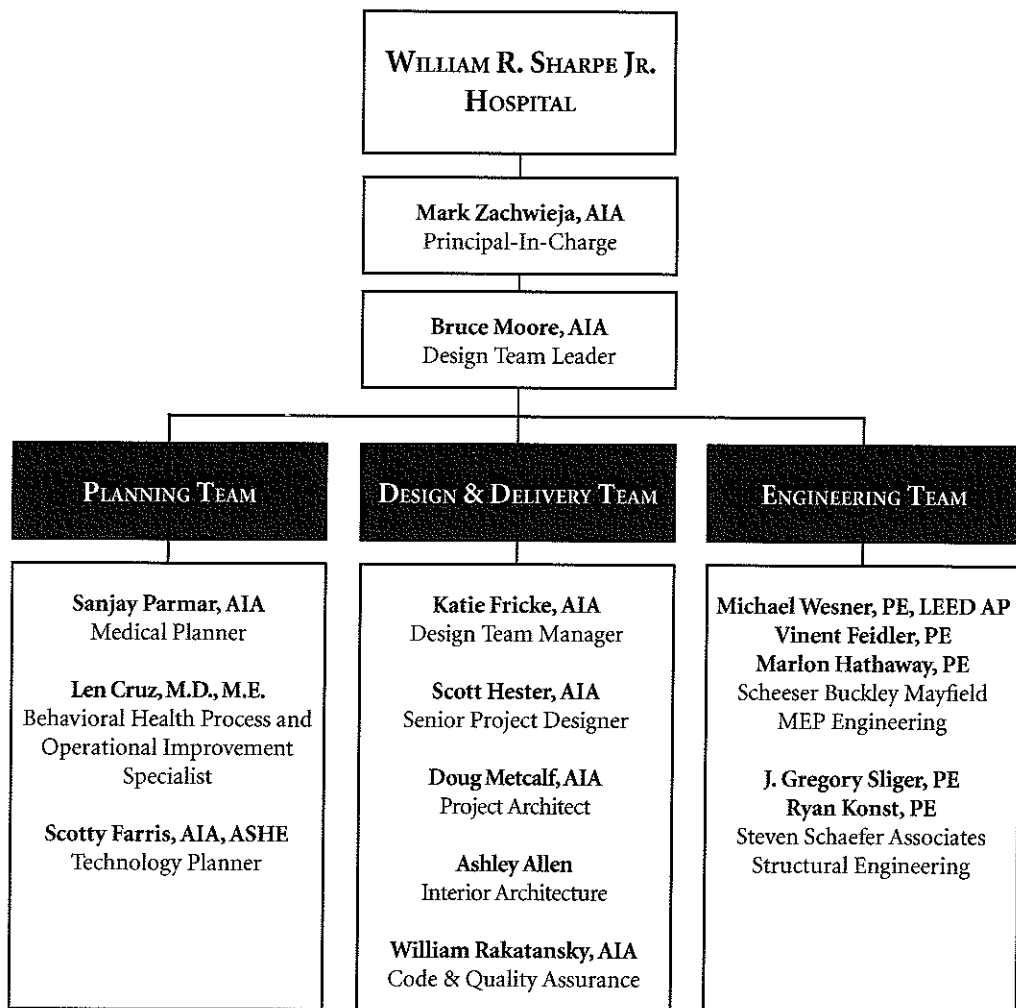
Construction Coordination

Variety of specialized services, including negotiation, facilitation, and mediation services provided by FreemanWhite or through using a specialty consultant.





PROJECT TEAM OVERVIEW





RELATED HEALTHCARE EXPERIENCE

What distinguishes Kreps and Zachwieja/FreemanWhite from other healthcare design firms is our emphasis on analyzing and defining the most efficient ways to operate a facility before we start the planning process. To accomplish this, FreemanWhite is more than architects and engineers. We have identified and recruited numerous healthcare professionals that understand the financial, clinical, operational, and technical aspects of delivering healthcare services. Understanding the issues that face our clients every day is essential for us to provide you with a comprehensive and responsive facilities solution.

Our team challenges our clients to reevaluate their traditional preconceptions of healthcare operations and facilities. Through interactive workshops, interviews, and brainstorming sessions, We work closely with the hospital's key stakeholders and committees to shape the successful strategic, operational, and facility design future of the hospital or health system. The FreemanWhite process facilitates consensus building.

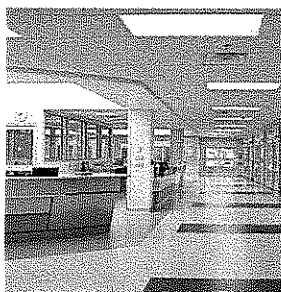
FreemanWhite provides quantified data to test and evaluate the findings of innovative operational and physical planning scenarios. Through the use of FreemanWhite's computer simulation analysis program, reduction in throughput times are quantified and measured against estimated budgets for implementation of proposed operational and/or physical design changes. By quantifying both the benefits and the costs, the hospital is able to make an informed decision on commencing with proposed changes to:

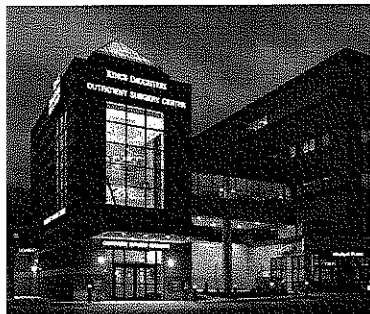
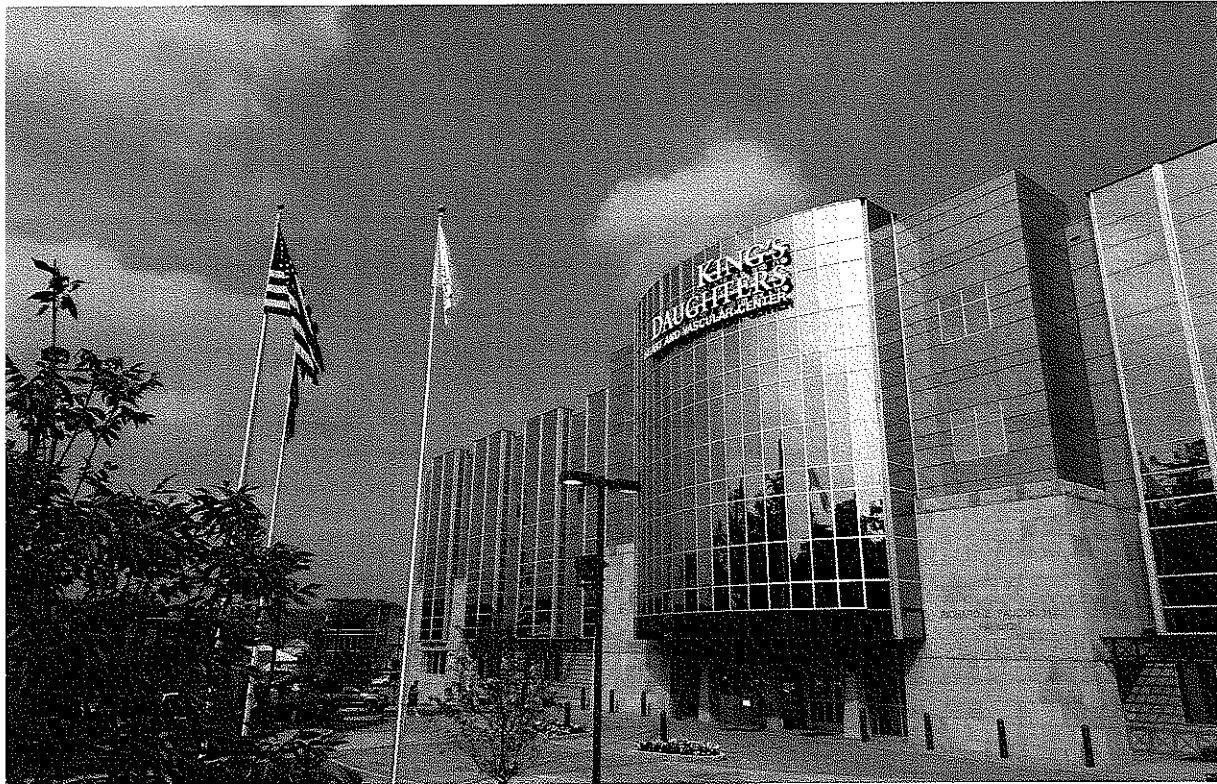
- Services delivered;
- Patient movement and circulation;
- Operational processes and procedures;
- Staffing mix: types and quantities;
- Materials storage, use, and access;
- Information/data documentation and access;
- Technology or communications operations; and
- Physical environment.

FreemanWhite's holistic design process produces exceptional solutions based on the fundamentals of integrating business and operational needs into the physical design. With a clear understanding of the business goals and operational drivers, we incorporate healing design tenets into our architectural solutions.

A summary of our work for hospital and healthcare clients within the last five years includes:

- Mon General Hospital, Campus Expansion, Morgantown, WV
- Marshall University School of Medicine, Robert C. Byrd Clinical Education and Outreach Center, Huntington, WV
- Lehigh Valley Hospital and Health Network, Muhlenberg Campus Expansion, Bethlehem, PA
- Lehigh Valley Hospital and Health Network, Cedar Crest North Tower, Allentown, PA
- Forsyth Medical Center, North Pavilion, Winston-Salem, NC
- Medical Center of Central Georgia, Heart Center, Macon, GA
- Carolinas Medical Center-NorthEast, Clinical Services Building, Concord, NC
- St. Peter's Hospital, Master Plan Implementation, Albany, NY
- Rowan Regional Medical Center, Patient Tower Expansion and Emergency Department Pavilion, Salisbury, NC
- St. Mary's Hospital, Intensive Care Renovation, Huntington, WV
- Summersville Memorial Hospital, Additions/Renovations, Summersville, WV
- Thomas Memorial Hospital, New Patient Tower, South Charleston, WV





KING'S DAUGHTERS MEDICAL CENTER Ashland, Kentucky

Since 1999, Kreps and Zachwieja Architects has been responsible for bringing significant change to the King's Daughters Medical Center Organization organization through innovative thinking and best practice design strategies. Kreps and Zachwieja Architects is helping King's Daughters Medical Center realize their vision of "World Class Care in Our Communities" by designing world class facilities for them. Recent projects of note include the \$50 Million Heart and Vascular Center and the "Futuristic" Center for Advanced Imaging.

CONSTRUCTION COST:

\$85,000,000+ (combined)

PROJECTS:

Heart and Vascular Center *
Center for Advanced Imaging
Outpatient Surgery Center

COMPLETION DATE:

1999-2008

FEATURES:

12 New Cath Labs
50 inpatient Beds
6 Outpatient OR's
Combined Digital imaging/
Breast Center

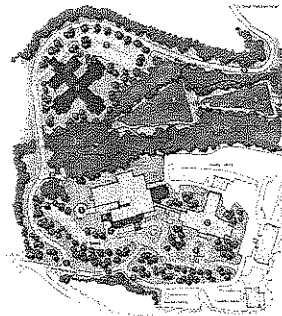
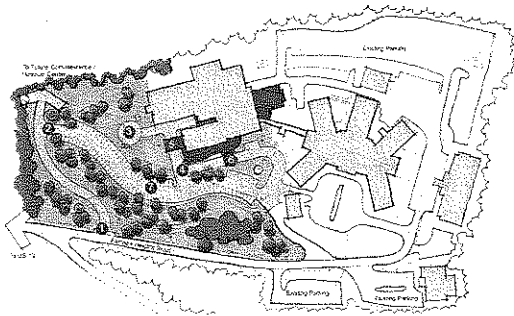
SERVICES PROVIDED:

Facility Masterplanning
Architectural Design
Construction Administration

CONTACT:

Howard Harrison, Executive Director, Facilities/ Support Services
Kings Daughter's Medical Center
2201 Lexington Avenue
Ashland, KY 41101
606.327.4618
howard.harrison@kdmc.net

*Joint venture with Freeman-White.



SUMMERSVILLE MEMORIAL HOSPITAL Summersville, West Virginia

Kreps and Zachwieja performed a master planning services to include both the expansion and renovation of existing hospital facilities in 2006. This Masterplan identified the first project to be a multi-phased construction of a new I.C.U., a new 18 bed Emergency Department, a new Hospital Lab, Outpatient Services, new Lobby and Main Entrance and expansion of the Obstetrics Unit. Future phases planned propose a new 60 bed Replacement Nursing Home and campus improvement plans to include nature trails developed around a storm water management ponds.

CONSTRUCTION COST:

\$7,000,000 (est.)

PROJECT SIZE:

new: 14,553 sf

reno: 9,500 sf

COMPLETION DATE:

August 2009 (est.)

FEATURES:

6 New I.C.U. beds

18 Bed Emergency Department

New Lab

Outpatient Services

Obstetrics Unit Expansion

SERVICES PROVIDED:

Facility Masterplanning

Architectural & Interior Design

Construction Administration

CONTACT:

Debbie Hill, CEO

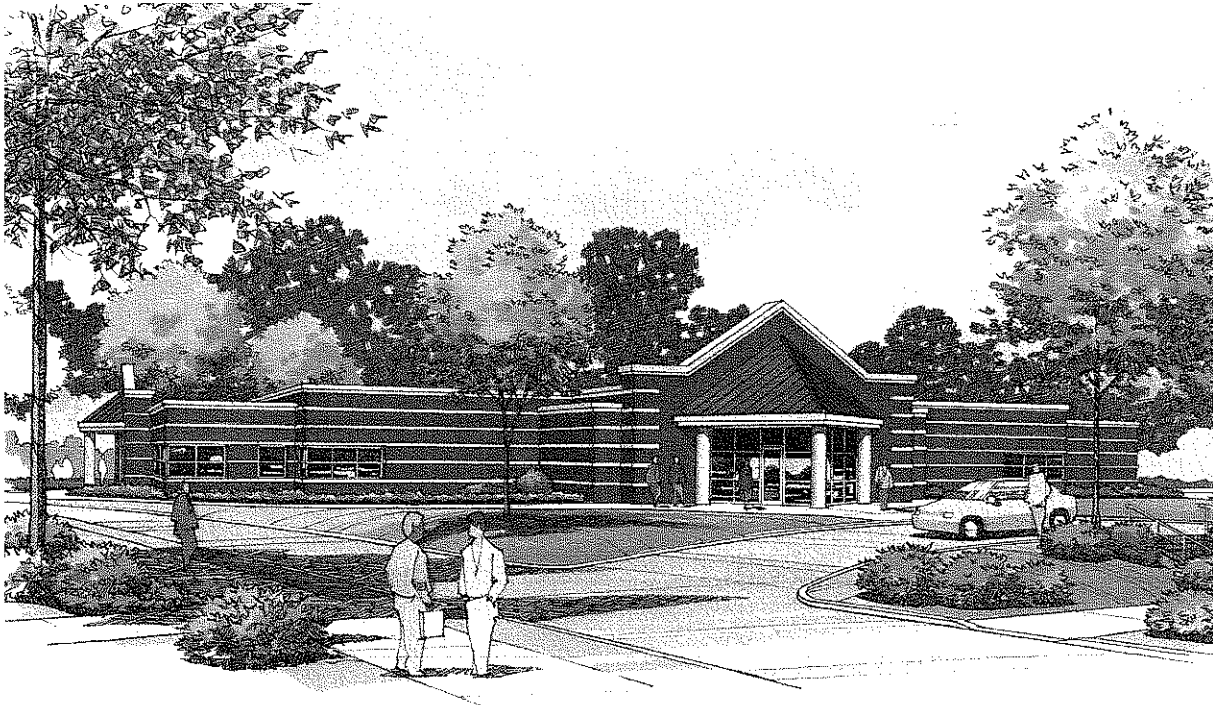
Summersville Memorial Hospital

400 Fairview Heights Rd.

Summersville, WV 26651

304.872.8402

dhill@smh.org



WEST VIRGINIA SCHOOL OF OSTEOPATHIC MEDICINE Lewisburg, West Virginia

Kreps and Zachwieja's affiliation with the Osteopathic School began in the 1980's. The school was granted an increase in student enrollment. The 1987 Master Plan reflected the need for this growth and was implemented over the next 10 years. At that time the school was granted an additional increase in enrollment which resulted in the 2000 Master Plan. This plan is currently being implemented most recently with the new Center for Clinical Evaluation, which is under construction.

CONSTRUCTION COST:

\$40,000,000+ (combined)

PROJECTS:

Center for Clinical Evaluation

Center for Technology and

Rural Medicine

Robert C. Byrd Clinic Phase I,
II, and III

Frederic W. Smith Laboratory

COMPLETION DATE:

On-going since 1989

FEATURES:

Facilities expanded to double
the student class size.

SERVICES PROVIDED:

Facility Masterplanning

Architectural & Interior
Design

Construction Administration

CONTACT:

Olen E. Jones, Ph. D.

WV School of Osteopathic

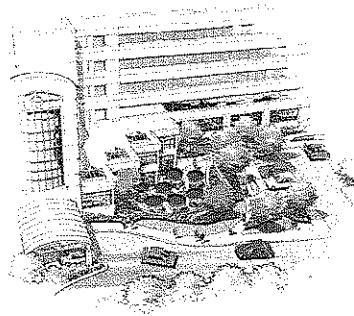
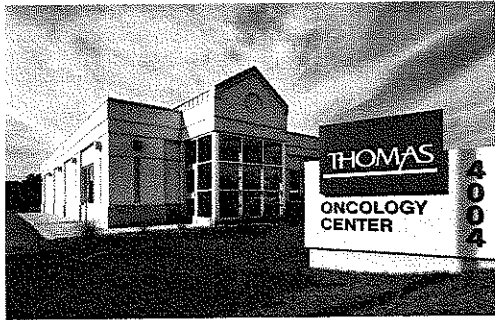
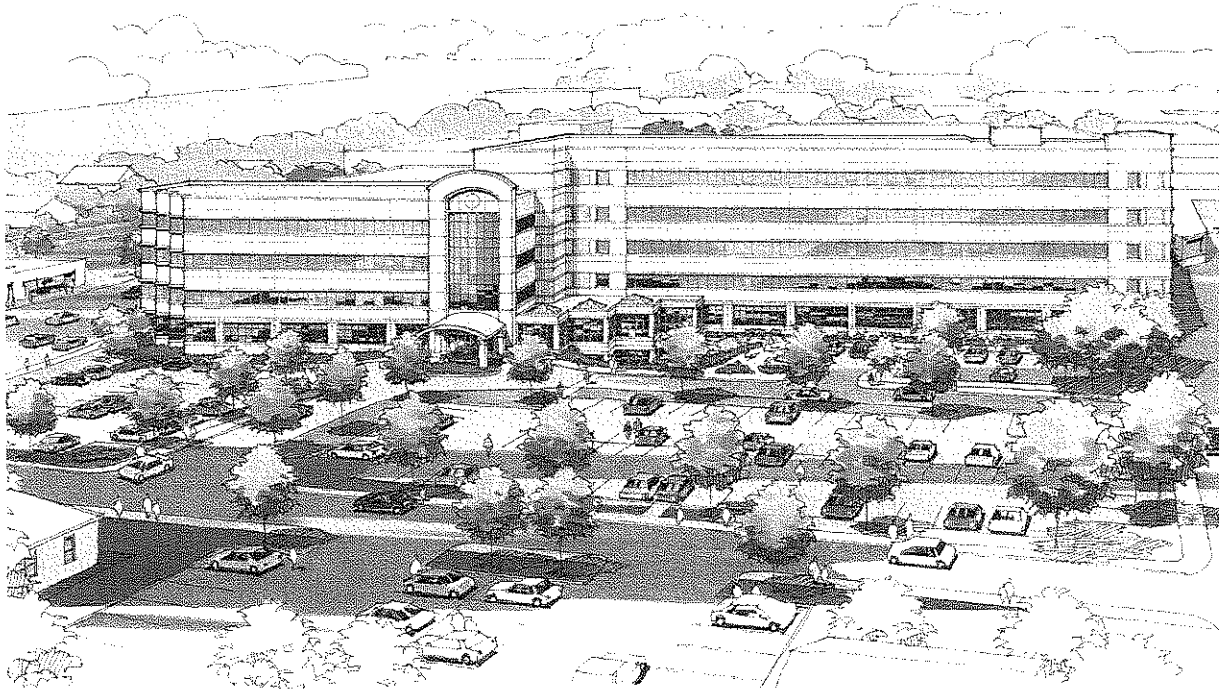
Medicine

400 North Lee Street

Lewisburg, WV 24901

304.645.6270

ojones@wvsom.edu



THOMAS MEMORIAL HOSPITAL South Charleston, West Virginia

Our association with Thomas Memorial Hospital began in 1949. Early additions and alterations for Thomas in the 1950's and 1960's by our original founders Vecellio and Kreps have been eclipsed by recent projects by Kreps and Kreps and Kreps and Zachwieja Architects. More recent projects of note include the Medical Pavilion and Clinical Pavilion. These projects are the culmination of several years of planning. Their combined cost of over \$65 million represents the largest investment at their South Charleston Campus in hospital history.

CONSTRUCTION COST:

\$90,000,000+ (combined)

PROJECTS:

Thomas Medical Office Pavilion
Thomas Clinical Pavilion *
Thomas Oncology Center

COMPLETION DATE:

On-going since 1949

FEATURES:

6-Story Medical Office Pavilion
New Surgery
New Lab
Outpatient Services Relocation
Obstetrics Unit Relocation



ST. MARY'S MEDICAL CENTER Huntington, West Virginia

In 1960 a project that could be classified as our first major addition to the hospital was completed. The 6-story East Building project began a relationship that has lasted for over 50 years and has lead to other work within the Pallotine Mission Healthcare Organization. The hospital once again underwent major construction in the 1970's thru 1990's with a replacement hospital and a new patient bed tower. This changed the face of the hospital and provided them with a new facility to match their state-of-the-art care, which continues to this day. The tower, with all private patient rooms, overlooks the river and integrates the healing environment with that of nature. These building still serves their needs of the hospital today. The New Outpatient Surgery Center increased cardiovascular services for outpatient and provided the hospital with much needed medical office space. Work continues to expand the facility's service lines with current renovations and new construction.

CONSTRUCTION COST:
\$100,000,000+ (combined)

PROJECTS:
Outpatient Surgery Center
New Convent
New Education Center

COMPLETION DATE:
On-going since 1956

FEATURES:
New 36 bed I.C.U. *

SERVICES PROVIDED:
Facility Masterplanning
Architectural & Interior
Design
Construction Administration

CONTACT:
Mr. Timothy M. Parnell
VP of Facilities and Support
Services
St Mary's Medical Center
2900 First Avenue
Huntington, WV 25702
304.526.1691

*Joint venture with Freeman-White.



CLINICAL SERVICES BUILDING VERTICAL EXPANSION Carolinas Medical Center-NorthEast Concord, North Carolina

An example of FreemanWhite's design for patient focused care, the Clinical Services Building provides 108 inpatient general surgery, ICU, and PICU beds. Utilizing evidence based design elements, this project maximizes patient safety and care. Specifically, sub nurses stations have clear views into each patient room, directly to the patient head. All toilet rooms are placed outboard for greater flexibility in the patient room and for clear caregiver, patient, and family zones. Family accommodations include internet access, desk space, and daybeds in each room. Flat screen televisions, flower shelves, and corridor windows with integral blinds allow patients to control privacy.

The Jeff Gordon Children's Hospital, a "hospital within a hospital," features a dedicated pediatric elevator, children's art gallery, playroom with aquarium, and child advocacy department to aid in the care and privacy of children. This 28-bed hospital features unique interior finishes with twinkle lights and specialty glass features that evoke a child's creativity. Waiting rooms, dedicated overnight parent rooms for the PICU, and way finding elements help provide comfortable environments for patients and families.

The ICU waiting areas feature an eatery and art gallery space; classrooms and learning centers provide additional educational opportunities. The Clinical Services Addition is intended to provide both advanced inpatient and outpatient neurosciences services, as well as easily accessible examination areas.

CONSTRUCTION COST:
\$27,478,000

PROJECT SIZE:
96,000 sf

COMPLETION DATE:
2006

FEATURES:

- 108 patient beds
 - Intensive care beds
 - Pediatric intensive care beds
 - Med/surg beds
- Hospital within a hospital
- Patient focused care design
- Family accommodations



CAMPUS EXPANSION
Mon General Hospital
Morgantown, West Virginia

Freeman White's 200,800 sf addition to the original 1977 hospital was designed to provide exceptional inpatient care and focuses on patient and visitor safety and wayfinding. A two-story atrium helps provide wayfinding orientation devices and features several amenities for the public, such as a cafe and gift shop. Renovations and additions of support services, such as pharmacy, surgery prep and recovery, central sterile process, and materials distribution are also included within the scope of the project.

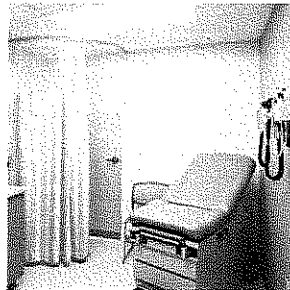
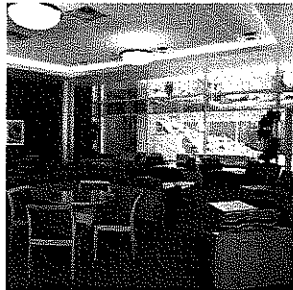
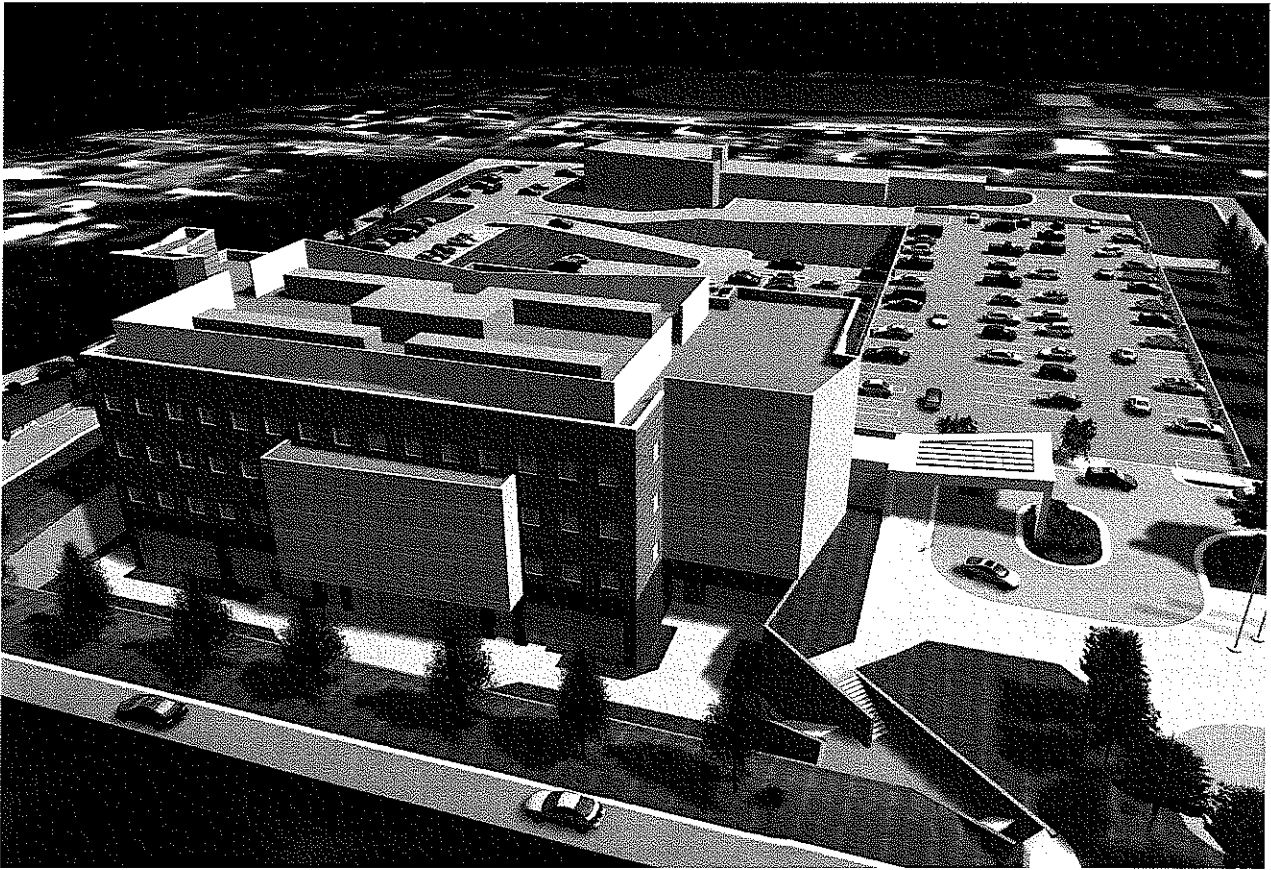
Additionally, the hospital has 16 private ICU rooms with sub nurses stations and dedicated waiting rooms with educational alcoves for family research. Separate patient and staff corridors protect patient dignity and privacy. Private patient rooms are designed to provide flexible nurse staffing ratios for flexibility, and patient rooms are divided into family, patient, and staff zones for patient safety.

CONSTRUCTION COST:
 \$67,992,000

PROJECT SIZE:
 new: 200,800 sf
 reno: 112,000 sf
 total: 312,800 sf

COMPLETION DATE:
 2008

- FEATURES:**
- 201 private patient beds
 - Inpatient general surgery
 - Intensive care unit
 - Expanded ED
 - Consolidated and expanded imaging department
 - Enhanced women's diagnostics
 - Separate staff and patient corridors
 - Public concourse and lobby
 - New main entrance
 - Phased construction

**CONSTRUCTION COST:**

\$23,500,000

PROJECT SIZE:

80,000 sf

400-car parking garage *planning***COMPLETION DATE:**

2007

FEATURES:

Expanded educational facilities

Cardiology

Outpatient diagnostics

Resident accommodations

Research

Internal medicine

Geriatrics

Imaging

Tiered classrooms

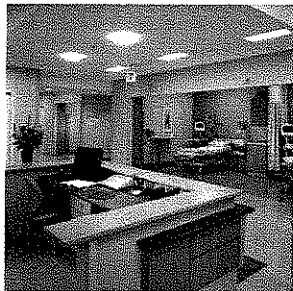
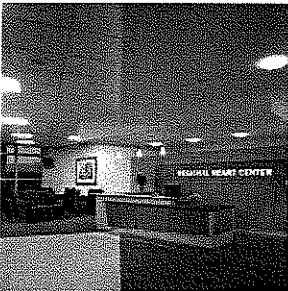
Auditorium

CLINICAL SERVICES EDUCATION & OUTREACH CENTER

Marshall University School of Medicine

Huntington, West Virginia

The new Clinical Center houses new medical student teaching facilities and clinical education patient care clinics, enabling the SOM to increase the size of its medical school class and, consequently, the number of well-trained doctors practicing in southern West Virginia and surrounding areas. The design addresses existing circulation challenges on the campus and utilizes the grade differential to separate the student and professional occupants of the building. Through use of cutting-edge technology, the facility ties together the educational and clinical aspects medical education, focusing on internal medicine, cardiology, endocrinology, gastroenterology, infectious diseases, pulmonary medicine, rheumatology, and geriatrics. The state-of-the-art medical education teaching facility includes a 125-seat tiered classroom, as well as smaller classrooms and additional study areas. The Clinical Skills Center provides medical students and residents the opportunity to develop and refine their patient care skills, using both computer based models and live simulated patients, prior to seeing actual patients on the building's three upper floors, which can accommodate 75,000 annual patient visits.



CONSTRUCTION COST:

\$60,000,000

PROJECT SIZE:

260,000 sf

COMPLETION DATE:

2005

FEATURES:

Regional Heart Center

Center for Critical Care

Cancer Center

Diagnostic Center

188 private patient rooms

Custom-designed, dedicated charting areas

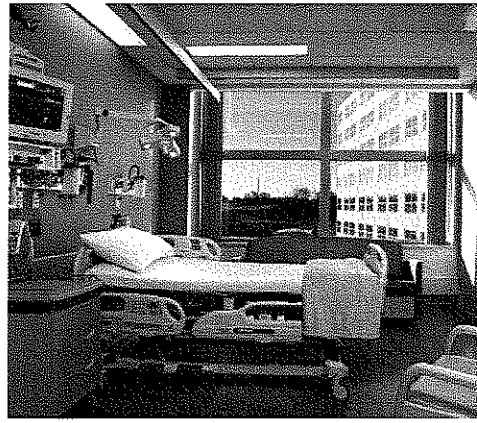
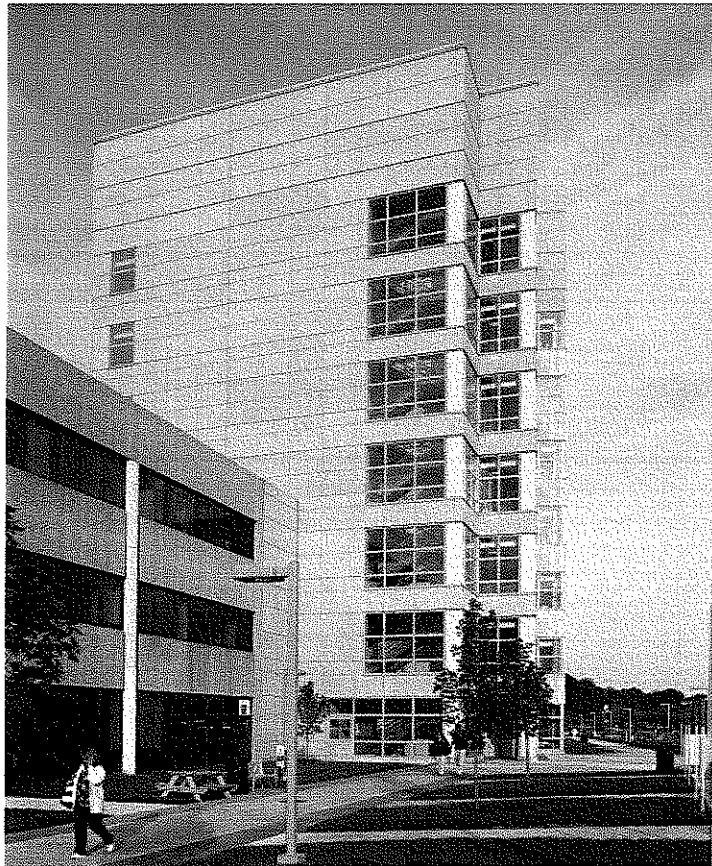
Tele-intensivists to provide 24-hour remote monitoring of ICU patients

MUHLENBERG CAMPUS EXPANSION Lehigh Valley Hospital and Health Network Bethlehem, Pennsylvania

The new, seven-story facility houses the Regional Heart Center, Center for Critical Care, Cancer Center, Diagnostic Center, and 188 new private patient rooms, which were created to maximize a healing environment, convenience, safety, and superior patient-focused care.

The detail and character of the healthcare interiors evoke a healing environment centered on the client's program – *The Patient Experience*. Combining color, materials, texture, and light into the built environment, the interiors enhance the quality of healthcare for patients, visitors, and staff.

Continuing a tradition of caring for families that started more than 40 years ago, the new facility proves that a supportive building design can enhance the quality of healthcare. Its healing environment is life-enhancing for patients, families, and staff members.



CEDAR CREST NORTH TOWER
Lehigh Valley Hospital and Health Network
 Allentown, Pennsylvania

FreemanWhite recently completed a master plan response to increased demand from Lehigh Valley Hospital's larger and aging population. The implementation includes a new, seven-story structure with inpatient beds, surgery, and extensive support spaces.

The design, which meets LEED standards, includes six new operating rooms with expanded support, expanded recovery and same-day surgery units; new 12-bed open heart and 30-bed step-down units; new 32-bed ICU; 18-bed burn unit; and four 30-bed acute care patient units. Key features of the inpatient areas include all private patient rooms with overnight accommodations for family members and a semi-enclosed healing garden for patients, staff, and families.

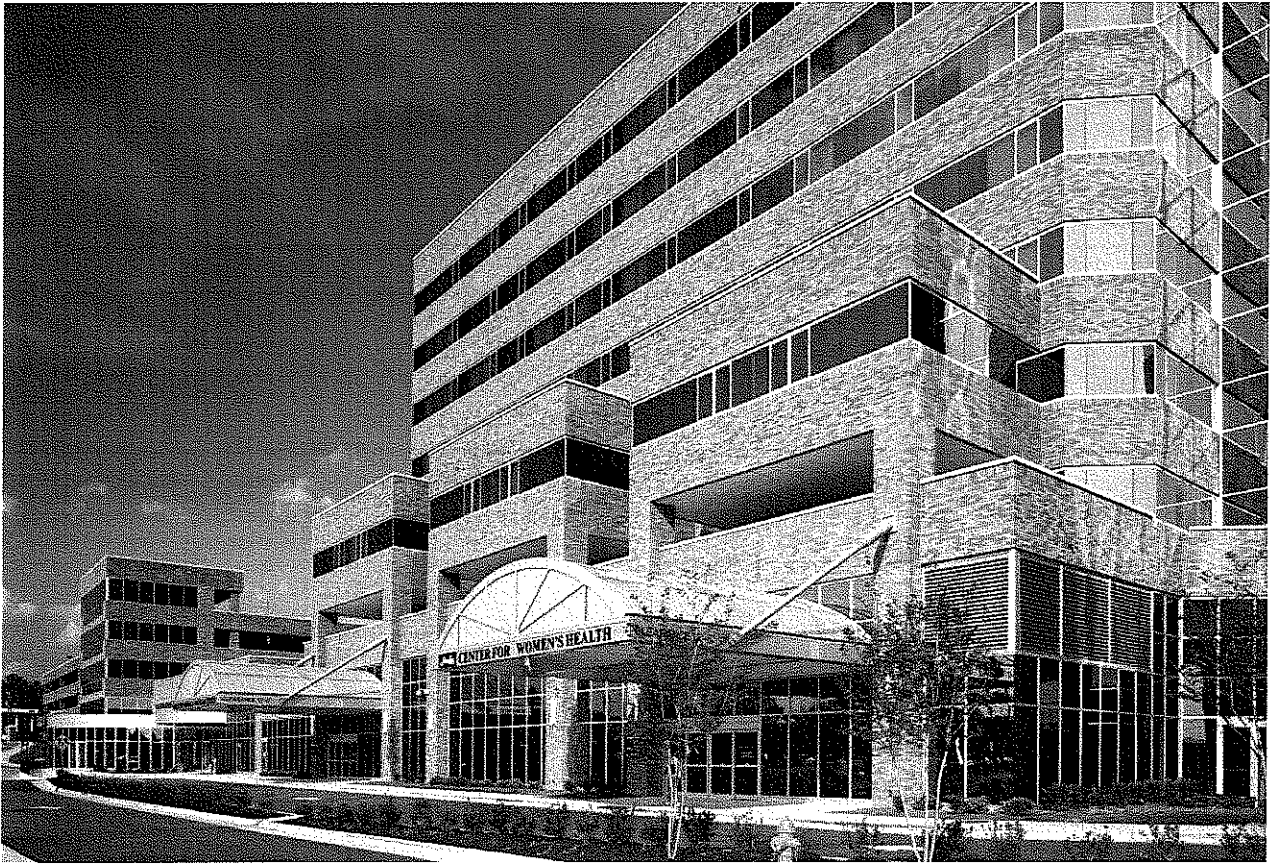
Additionally, this project will expand the existing emergency department from 23 to 48 treatment bays to accommodate over 80,000 annual visits. The new department will consist of approximately 7,500 sf of new construction and 18,000 sf renovation.

CONSTRUCTION COST:
 \$129,600,000

PROJECT SIZE:
 new: 364,700 sf
 reno: 107,000 sf
 total: 471,700 sf

COMPLETION DATE:
 est. 2007
 60% construction

- FEATURES:**
- 234 acute care beds
 - 48 ED treatment bays
 - 6 operating rooms
 - Conference center
 - Expanded medical library
 - Pharmacy
 - Dietary kitchen
 - County morgue
 - Expansion capability for 96 additional beds



NORTH PAVILION Forsyth Medical Center Winston-Salem, North Carolina

Developed through FreemanWhite's 2001 master planning efforts at Forsyth Medical Center, the new North Pavilion will encompass over 350,000 sf of new construction. Engaged as a significant extension of critical service lines, the new building will allow for much needed facility expansion. Although the facility revolves around two Centers of Excellence – the Sara Lee Center for Women's Health and the new Forsyth Cardiology Center – the North Pavilion provides 120 additional inpatient beds on four medical/surgical bed floors.

The Sara Lee Center for Women's Health will contain 24 LDRs, designed in suites of four. The facility will also contain an eight-bed labor triage unit, and renovated space will house a 20-bed antepartum unit, 21-bed GYN unit, and other women's services. Additionally, the center will provide 40 Level II/III NICU bassinets grouped in semi-private suites of two and arranged around central support. Each NICU bay will contain a designated family area.

Occupying nearly three floors, the Forsyth Cardiology Center will combine all cardiac functions, including non-invasive cardiology and nuclear medicine, EP labs, cardiac cath labs, prep/recovery space, and 24 new coronary care beds. In addition to the new construction, the project program includes nearly 200,000 sf of renovated area to align with the services brought forth in the North Pavilion.

CONSTRUCTION COST:

\$112,720,000

PROJECT SIZE:

550,000+ sf

COMPLETION DATE:

est. 2007

75% construction

FEATURES:

- 120 med/surg beds
- 65 women's beds
- 40 Level II/III NICU beds
- 24 coronary care beds
- 8 triage beds
- Noninvasive cardiology
- Nuclear medicine
- EP and cardiac cath labs
- Procedure pre/recovery
- 1,400-car parking deck



GEORGIA HEART CENTER
The Medical Center of Central Georgia
 Macon, Georgia

This new facility will consolidate The Medical Center of Central Georgia's cardiology and cardiovascular services. Featuring a dedicated entrance and central patient intake, the design will reduce patient and staff travel time while improving operational efficiency and patient and family satisfaction. FreemanWhite developed the strategic plan, program, and design as a "hospital within a hospital."

The new, eight-story tower will include invasive cardiology, pre-procedure and post-procedure beds, noninvasive cardiology, nuclear medicine, cardiac rehabilitation, education, and space for medical practices. The inpatient bed component includes a cardiovascular ICU with 16 beds, an interventional unit with 24 beds, a step-down unit with 48 beds, and a chest pain unit.

CONSTRUCTION COST:
 \$55,100,000

PROJECT SIZE:
 217,000 sf

COMPLETION DATE:
 est. 2007
 50% construction

FEATURES:
 2 vascular labs
 3 EP labs
 8 cath labs
 44 pre/post procedure beds
 60 observation beds
 88 inpatient beds



MASTER PLAN IMPLEMENTATION St. Peter's Hospital Albany, New York

Our comprehensive master facility plan outlined market strategy, operational improvements, and facility evolution. This implementation includes a major inpatient pavilion expansion with 117 new patient beds. With the associated renovations of existing patient wings into state-of-the-art medical/surgical and intensive care units, the ratio of private patient rooms will change from 17% to 70%

The lower two floors of the new pavilion include a dedicated cardiac and vascular surgery suite with eight oversized operating rooms and associated pre-op, recovery, and support space located directly adjacent to the CVICU and step-down cardiac units. The second floor includes a surgery suite with 16 operating rooms, a 32-bed perioperative/stage 2 recovery unit, and a 20-bed recovery unit. Renovated space on the second floor includes a new, 24-bed intensive care unit.

A new main entry feeds a dramatic public space connecting major departments on the main floor and the public/visitor elevators. A food court will be located off this public space to serve visitors, helping to separate public and patient traffic on the first floor. The clinical laboratory relocation will make room for a comprehensive cardiology suite for both non-interventional and interventional cardiology.

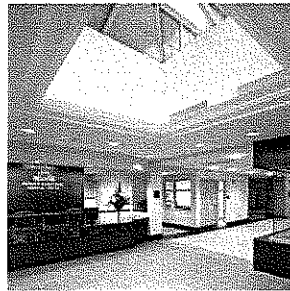
The lower level houses a new inpatient pharmacy and seven-room endoscopy suite. Renovated areas on this level include new nuclear medicine suite with four procedure rooms. This renovation focused on improving patient care and safety in light of increased patient acuity.

CONSTRUCTION COST:
\$120,000,000

PROJECT SIZE:
new: 220,000 sf
reno: 173,000 sf

COMPLETION DATE:
est. 2010 - 1% construction

FEATURES:
117 new patient beds
Renovated patient beds
Surgery
Cardiology
Endoscopy
Nuclear medicine
Clinical laboratory
Pharmacy
Infrastructure upgrade
Bridge connector to parking garage



CONSTRUCTION COST:

\$42,700,000

PROJECT SIZE:

162,000 sf

COMPLETION DATE:

2006

FEATURES:

- 34 med/surg beds
- 25 women's beds
- 8 observation beds
- 5 level I NICU beds
- 25 exam/treatment rooms
- 4 psychiatric evaluation rooms
- 2 C-section ORs
- 2 resuscitation rooms
- Radiology, CT, ultrasound
- Roof helipad
- Reception/waiting space

PATIENT TOWER EXPANSION AND ED PAVILION

Rowan Regional Medical Center

Salisbury, North Carolina

To address existing space limitations in its inpatient nursing units, Rowan Regional Medical Center commissioned FreemanWhite to consolidate and enhance the inpatient Women's Health Center, increase beds in the Cardiac Care Unit, and centralize palliative care in the Palliative Care Unit.

The second floor increases private med/surg beds in response to patient satisfaction surveys. The physical layout wraps patient rooms around two nursing units, allowing flexibility in nurse staffing and providing either exterior or interior courtyard views from the patient rooms. The third floor houses expanded labor and delivery, newborn and Level I NICU service, and additional inpatient rooms.

Another component of this project is an expanded ED with 25 exam/treatment rooms and diagnostic support.



ADDITIONAL HEALTHCARE PLANNING EXPERIENCE

Allina Health System

Coon Rapids, MN

Alterra Healthcare

Milwaukee, WI

Ascension St. Mary's Hospital

Amsterdam, NY

Ascension St. Mary's Hospital and Health Center

Tucson, AZ

Athens Regional Medical Center

Athens, GA

Banner Health Page Hospital

Page, AZ

Bannock Regional Medical Center

Pocatello, ID

Baylor University Medical Center

Dallas, TX

Bluefield Regional Medical Center

Bluefield, WV

Bon Secours Health System

Memorial Regional Medical Center, Richmond, VA

Richmond Community Hospital, Richmond, VA

St Mary's Hospital, Richmond, VA

Boone Memorial Hospital

Madison, WV

Botsford General Hospital

Detroit, MI

Bristol Regional Medical Center

Bristol, TN

BryanLGH Medical Center

Lincoln, NE

Camp Lejeune Hospital

Jacksonville, NC

Carolinas Medical Center

Charlotte, NC

Monroe, NC

Catawba Valley Medical Center

Hickory, NC

Catholic Health System

Mercy Ambulatory Care Center, Orchard Park, NY

Mercy Hospital of Buffalo, Buffalo, NY

Sisters of Charity Hospital, Buffalo, NY

St. Joseph's Hospital, Cheektowaga, NY

Catholic Health

Long Island, NY

Central Baptist Hospital

Lexington, KY

Central Maine Medical Center

Lewiston, ME

Chesapeake General Hospital

Chesapeake, VA

Children's Hospital and Health Center

San Diego, CA

Clovis Community Medical Center

Clovis, CA

Community Memorial Hospital

Menomonee Falls, WI

Concord Hospital

Concord, NH

Contra Costa Regional Medical Center

Martinez, CA

Covenant Healthcare

Saginaw, MI

Danville Regional Medical Center

Danville, VA

Dartmouth-Hitchcock Medical Center

Lebanon, NH

Deaconess Billings Clinic

Billings, MT

DeVos Children's Hospital

Grand Rapids, MI

Doylestown Hospital

Doylestown, PA

Duke Raleigh Hospital

Raleigh, NC



Duke University Medical Center

Durham, NC

Dukes Memorial Hospital

Peru, IN

Eliza Coffee Memorial Hospital

Florence, AL

Ellis Hospital

Florence, AL

Englewood Hospital

Englewood, NJ

Evergreen Community Healthcare

Kirkland, WA

Excela Health

Latrobe, PA

Exeter Hospital

Exeter, NH

Fairbanks Memorial Hospital

Fairbanks, AK

Fairview Southdale Hospital

Edina, MN

Florida Hospital

Orlando, FL

Fortis Noida

New Dehli, India

Forsyth Medical Center

Winston-Salem, NC

Froedtert Hospital

Milwaukee, WI

Fundacion Santa Fe de Bogota

Bogota, Columbia

Glens Falls Hospital

Glens Falls, NY

Gouverneur Hospital Center

New York City, NY

Grant/Riverside Methodist Hospital

Columbus, OH

Granville Medical Center

Oxford, NC

Halifax Regional Medical Center

Roanoke Rapids, NC

Hannibal Regional Hospital

Hannibal, MO

Harrison Hospital

Bremerton, WA

Haywood Regional Medical Center

Clyde, NC

Health Net Labs

Allentown, PA

Henry Medical Center

Stockbridge, GA

Heritage Valley

Beaver, PA

Sewickley, PA

Highline Medical Center

Seattle, WA

Hollywood Presbyterian Medical Center

Los Angeles, CA

Holy Redeemer Hospital

Philadelphia, PA

Holyoke Medical Center

Holyoke, MA

Hospital of San Raphael

New Haven, CT

Huntington Hospital

Pasadena, CA

Huntsville Hospital

Huntsville, AL

Jewish Hospital HealthCare Services

Louisville, KY

John Muir Medical Center

Walnut Creek, CA

Johnson Memorial Hospital

Stafford Springs, CT



Kaiser Permanente South Sacramento Medical Center

Sacramento, CA

Kennestone Hospital

Marietta, GA

King's Daughters Medical Center

Ashland, KY

Lahey Clinic

Boston, MA

Lawrence Memorial Hospital

Lawrence, KS

Lenoir Memorial Hospital

Kinston, NC

Lehigh Valley Hospital and Health Network

17th Street Campus, Allentown, PA
Cedar Crest Campus, Allentown, PA
Muhlenburg Campus, Bethlehem, PA

Lemmen-Holten Cancer Center

Grand Rapids, MI

Lenoir Memorial Hospital

Kinston, NC

Lutheran General Hospital

Park Ridge, IL

Lynchburg General Hospital

Lynchburg, VA

Marshall University Medical School

Huntington, WV

Marshalltown Medical Center

Marshalltown, IA

Maury Regional Hospital

Columbia, TN

Mayo Clinic

Rochester, MN

McKay-Dee Hospital Center

Ogden, UT

McLaren Regional Medical Center

Flint, MI

Medical Center of Central Georgia

Macon, GA

Memorial Hospital

Colorado Springs, CO

Mercy Hospital

Miami, FL

Mercy Medical Center

Rockville Centre, NY

Mercy Medical Center

Des Moines, IA

Methodist Healthcare System

San Antonio, TX

Methodist Medical Center

Peoria, IL

Mills-Peninsula Medical Center

Burlingame, CA

Milwaukee County Behavioral Health Division

Milwaukee, WI

Mission Health System

Asheville, NC

Monongalia General Hospital

Morgantown, WV

Moses Ludington

Ticonderoga, NY

Mt. Diablo Medical Center

Concord, CA

Newton-Wellesley Hospital

Newton, MA

NorthEast Medical Center

Concord, NC

Northshore Long Island Jewish Health System

Long Island, NY

North East Georgia Health System

Gainesville, GA

Northern Michigan Hospital

Petoskey, MI



Northwest Community Hospital

Arlington Heights, IL

Norwalk Hospital

Norwalk, CT

Novant Health System

Charlotte, NC

Oconomowoc Memorial Hospital

Oconomowoc, WI

Olympic Medical Center

Port Angeles, WA

Page Hospital

Page, AZ

Pardee Hospital

Hendersonville, NC

Park Ridge Hospital

Rochester, NY

Piedmont Health

Atlanta, GA

Pitt County Memorial Hospital

Greenville, NC

Poudre Valley Memorial Hospital

Ft. Collins, CO

Presbyterian Hospital

Charlotte, NC

Providence Centralia Hospital

Centralia, WA

Providence Holy Cross

Burbank, CA

Providence Hospital and Medical Centers

Southfield, MI

Providence St. Peter's

Olympia, WA

Rady Children's Hospital

San Diego, CA

Regions Hospital

St. Paul, MN

Rex Hospital

Raleigh, NC

Rochester General Hospital

Rochester, NY

Roper St. Francis Hospital

Charleston, SC

Roanoke-Chowan Hospital

Ahoskie, NC

Rowan Regional Medical Center

Salisbury, NC

Rutherford Hospital

Rutherford, NC

Saint John's Healthcare

Santa Monica, CA

Scott & White Memorial Hospital

Temple, TX

Scottsdale Healthcare

Scottsdale, AZ

Scripps Health

San Diego, CA

Self Regional Hospital

Greenwood, SC

Sharp Coronado Hospital and Healthcare Center

Coronado, CA

Sharp Rees Stealy-Sharp Health Care

San Diego, CA

Silver Cross Hospital

Joliet, IL

Sioux Valley Hospitals & Health System (University of South Dakota)

Sioux Falls, SD

Southern Ohio Medical Center

Portsmouth, OH

Southside Hospital

Bay Shore, NY

Spartanburg Regional Health System

Spartanburg, SC



Spruce Pine Community Hospital

Spruce Pine, NC

St. Clair Hospital

Mt. Lebanon, PA

St. Claire Regional Medical Center

Morehead, KY

St. Elizabeth Hospital

Lincoln, NE

St. John Medical Center

Tulsa, OK

St. Mary's Hospital

Amsterdam, NY

St. Mary's Hospital

Huntington, WV

St. Mary's of Michigan

Saginaw, MI

St. Patrick Hospital

Missoula, MT

St. Vincent Hospital

Santa Fe, NM

Stanford University Hospital

Stanford, CA

Stanly Regional Medical Center

Albemarle, NC

Tahoe Forest Hospital

Truckee, CA

The Children's Hospital Los Angeles

Los Angeles, CA

The Monroe Clinic

Monroe, WI

The University of Chicago Hospitals

Chicago, IL

Thomas Memorial Hospital

Charleston, WV

Transylvania Community Hospital

Brevard, NC

Tri-City Hospital

Oceanside, CA

Union Regional Medical Center

Monroe, NC

University of California - Davis Medical Center

Sacramento, CA

University of California – San Francisco (UCSF) Moffitt Long Hospital

San Francisco, CA

University of Tennessee Medical Center at Knoxville

Knoxville, TN

University of Texas Medical Branch

Galveston, TX

University of Utah

Salt Lake City, UT

University of Wisconsin Hospital and Health Center

Madison, WI

Van Wert Community Hospital

Van Wert, OH

Veterans Affairs Medical Center

Asheville, NC

Wake Forest University Baptist Medical Center

Winston-Salem, NC

Washington Hospital

Fremont, CA

Wishard Health Services

Indianapolis, IN

Women's Christian Association Hospital

Jamestown, NY

Yale-New Haven Hospital

New Haven, CT

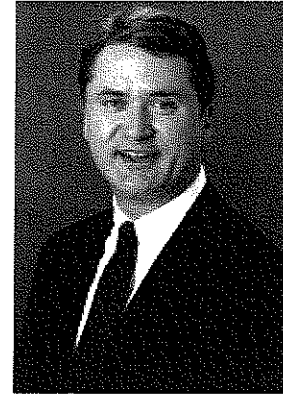


STAFF AND RESOURCES



MARK T. ZACHWIEJA, AIA Principal-in-Charge

Principal in Charge and President of Kreps and Zachwieja, Architects/Consultants, Inc. from 1999 to present. For 5 years, Mark specialized in Health Science Facility Design at BSA Design, Inc. in Indianapolis, Indiana prior to joining Kreps & Kreps. In 1994, Mark first joined Kreps and Kreps, Architects as Managing Partner. Mark brings with him nearly 20 years of experience in healthcare facility design and project leadership. His responsibilities include project administration, architectural planning, and design. His recent project experience includes:



Kings Daughters Medical Center Ashland, KY

- 2007 Master Facility Plan
- \$50 Million Heart and Cascular Center and Patient Bed Tower
- 20,000 sf Center for Advanced Imaging
- 30,000 sf Outpatient Surgery Center
- 250,000 sf Medical Office Plaza A & B

Thomas Memorial Hospital South Charleston, WV

- 85,000 SF Medical Office Pavilion
- \$60 Million Clinical Pavilion and Bed Tower totaling 160,000 SF
- 30,000 SF New Emergency Department
- 10,000 SF Digital Imaging Center

Summersville Memorial Hospital Summersville, WV

- 2006 Master Facility Plan
- New 18 bed Emergency Department
- New Intensive Care Unit
- New Hospital Lab
- Obstetrics Unit Expansion
- New Main Lobby, Gift Shop, and Outpatient Services Department

St. Mary's Hospital Huntington, WV

- 100,000 SF Outpatient Surgery Center and Medical Office Building
- Hospital Hospitality House
- Radiation Oncology Center

Veterans Administration Medical Center Beckley, WV

- 120 Bed Nursing Home Care Unit
- (Within the facility is a special 20-bed Psycho geriatric Unit)
- 12 Bed Specialty Clinic

Kanawha Hospice Care, Inc Charleston, WV

- 24 Bed Inpatient Hospice Facility (This was the first Inpatient Hospice House to be constructed in West Virginia)

St. Francis Hospital Charleston, WV

- 12,000 SF Center for Pain Relief
- 16 Bed Orthopedic Surgery Unit
- 32 Bed Geriatric Care Unit

EDUCATION:

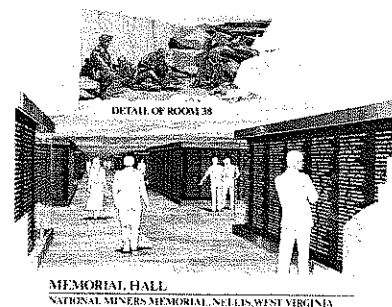
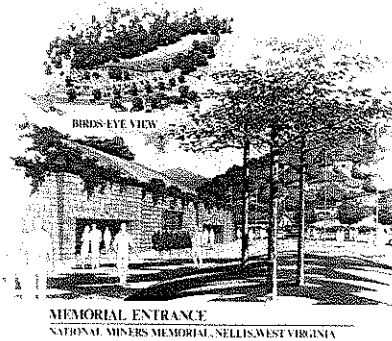
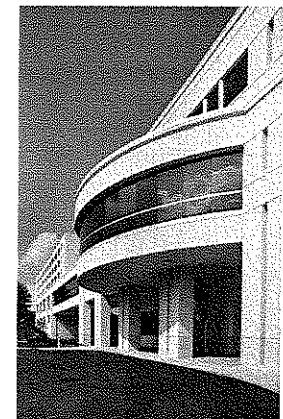
B. Arch, Virginia Polytechnic and State University - 1987

REGISTRATIONS:

WV

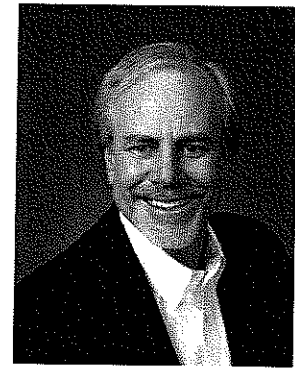
PROFESSIONAL AFFILIATION:

American Institute of Architects
AIA, West Virginia Chapter





BRUCE MOORE, AIA
Principal, Design Team Leader



With more than 25 years of experience in all phases of the architectural and building process, Mr. Moore's expertise includes multi-project development of healthcare facilities with particular emphasis on cardiac care facilities, emergency departments, and women's centers. In addition to his exceptional program development and technical capabilities, Mr. Moore also possesses a strong design acuity. Specific relevant project experience includes:

NorthEast Medical Center

Concord, NC

- Oncology/Cardiology Building
- Clinical Services Building expansion
- Mariam Cannon Hayes Family Center
- Ongoing complex renovations for **inpatient psychiatry**, OB/GYN, "Ask First" suite, dietary, clinical laboratory, and emergency services

Forsyth Medical Center

Winston-Salem, NC

- Master plan and \$150 million implementation
- 500,000+ sf North Pavilion
- Miscellaneous cardiac care projects
- New 65,000 sf Emergency Department and Relocation of 55,800 sf existing Emergency Department

St. Mary's Hospital

Huntington, WV

- 42,000 sf 34-bed ICU addition
- 20,000 sf step-down and pediatric unit renovation

Northeast Georgia Medical Center

Greenville, GA

- Programming and planning
- \$21 million Women's Services Center and NICU renovation
- In collaboration with HKS and Jones Lang LaSalle

The Medical Center of Central Georgia

Macon, GA

- Ambulatory Services Center
- Eight-story Georgia Heart Center to consolidate all invasive and non-invasive cardiovascular services
- Miscellaneous cardiac cath projects
- Operational and physical redesign of fast-growing 40,000 sf Emergency Department
- Associated renovations and site development, including parking and wayfinding, to support campus development

Haywood Regional Medical Center

Clyde, NC

- New Emergency Department
- New Urgent Care and Occupational Health Center
- New Health and Fitness Center*
- Laboratory expansion*

Mercy Medical Center

Miami, FL

- ED operational analysis
- ED renovation and expansion
- Architectural/engineering

Cape Fear Valley Medical Center*

Fayetteville, NC

- West Wing Expansion
- New eight-bed CSICU, new CS operating suite, new dining and dietary expansion, new histology library, new Social Services and Patient Relations Department, locker room relocation

EDUCATION:

B. Arch., University of Miami

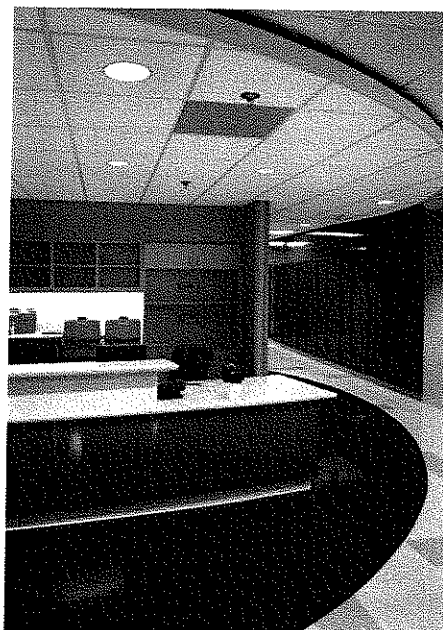
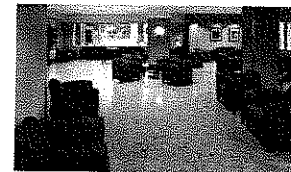
REGISTRATIONS:

FL, GA, NC, SC

NCARB Certified

PROFESSIONAL AFFILIATION:

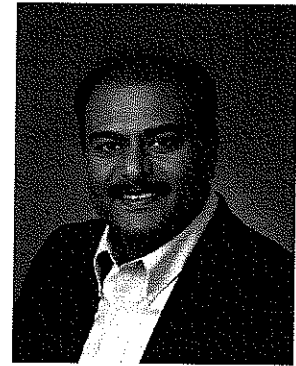
American Institute of Architects



Indicates personal experience gained prior to joining FreemanWhite



SANJAY M. PARMAR, AIA Medical Planner



Mr. Parmar, a senior medical planner at FreemanWhite, specializes in healthcare programming and master/facility planning with a focus on imaging technology and planning implications. Mr. Parmar's 19-year career has been devoted to healthcare and the impact that business decisions have on the care delivery model. His experience includes all facets of the healthcare built environment – nationally and internationally, for-profit and not-for-profit, small- and large-scale. A partial listing of his healthcare project experience includes:

St. Mary's Hospital

Amsterdam, NY

- Facility master planning
- Space programming for outpatient behavioral health

St. Mary's Hospital

Huntington, WV

- 42,00 sf 34-bed ICU addition
- 20,000 sf step-down and pediatric unit renovation

Mission Hospital

Asheville, NC

- Facility master planning
- Surgery department operational planning
- CMS facility assessment

Self Regional Healthcare

Greenwood, SC

- Renovations to Cancer Center, radiology department, cardiovascular services, pain management, and dialysis

Northeast Georgia Medical Center

Gainesville, GA

- 210,000 sf Women and Children's Pavilion

Mount Sinai Medical Center

New York, NY

- Surgery department master planning

McDowell Hospital

McDowell, NC

- Facility master planning
- Expansion and renovation of ED and imaging department

Baylor University Hospital

Dallas, TX

- Medical equipment planning

DeVos Children's Hospital

Grand Rapids, MI

- Medical equipment planning

NovantHealth/Forsyth Medical Center

Winston-Salem, NC

- Backfill studies
- Evaluation/planning of facility support service spaces

The Presbyterian Hospital

Charlotte, NC

- Facility master plan

Spruce Pine Community Hospital

Spruce Pine, NC

- Facility master plan
- Functional program

Mercy Hospital

Miami, FL

- Imaging and hyperbaric oxygen therapy department planning and functional program

Medical Center of Central Georgia

Macon, GA

- Backfill study and master planning of existing spaces

Maria Ferrari Children's Hospital*

Valhalla, NY

- 275,000 sf Children's Hospital and trauma center

Cleveland Clinic Foundation**

Cleveland, OH

- Planning of heart center

EDUCATION:

M. Arch., Healthcare Planning and Design, Clemson University

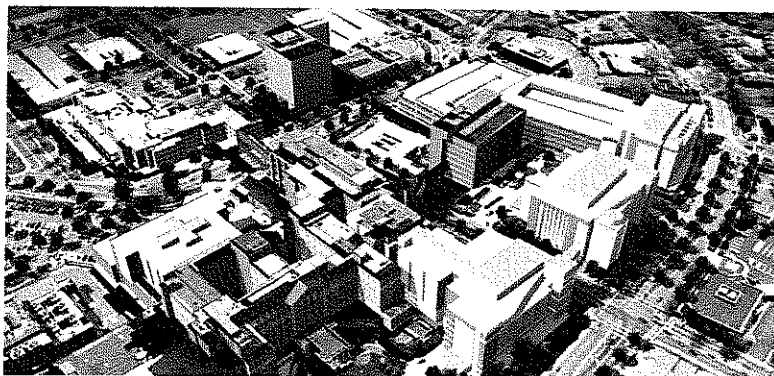
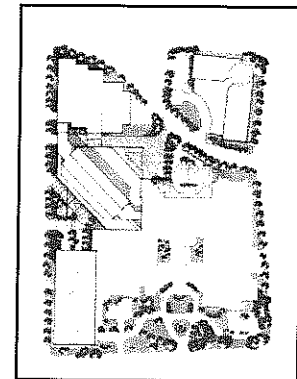
Diploma in Architecture, Academy of Architecture, Bombay, India

REGISTRATION:

Registered Architect
NC

PROFESSIONAL ASSOCIATIONS:

American Institute of Architects



* Indicates personal experience gained prior to joining FreemanWhite



LEN CRUZ, M.D., M.E.

Behavioral Health Process and Operational Improvement Specialist

Dr. Cruz is the Chief Medical Officer and Vice President of Strategic Development for Foundation Pegasus, LLC. His involvement in healthcare design and construction is informed by nearly thirty years of clinical and administrative experience within hospitals, managed care systems, other healthcare delivery systems. He has also been a consultant with the nation's largest executive recruiting firm that specializes in construction. Dr. Cruz is a strong advocate for rural healthcare recapitalization and is involved with the American Society of Healthcare Engineers' efforts to recapitalize our nation's rural health care system. He has consulted to small and medium sized hospitals and leads the lobbying efforts at the State and National levels for Foundation Pegasus, LLC.

Dr. Cruz has an MD from the University of Miami School of Medicine, a Masters in Entrepreneurship from Western Carolina University, and attended the Executive MBA program at Kent State University. He consults to business on topics ranging from new venture creation to succession planning. Dr. Cruz serves on the Institutional Review Board of Mission Hospitals in Asheville, NC and remains active in undergraduate and graduate medical education through the Mountain Area Health Education Center and UNC Asheville.

EDUCATION:

M. Entrepreneurship,
Western Carolina University
MD, University of Miami
School of Medicine
BS, University of Florida

REGISTRATION:

North Carolina

PROFESSIONAL ASSOCIATIONS:

American Board of Psychiatry
& Neurology
American Society of Healthcare
Engineers

Work Experience

Chief Medical Officer	Foundation Pegasus	2007-Present
Consultant	Kimmel & Associates	2007-2008
Private Medical Practice	North Carolina	1993-Present
Private Medical Practice	Ohio	1988-1992
Assistant Professor of Psychiatry	NE Ohio Universities Coll. of Med.	1988-1990
Private Practice	Michigan	1985-1988
Medical Director	Synton Group/PHP	1986-1988
Medical Director	Blue Care Network	1986-1988
Assistant Professor	Michigan State University	1985-1988
Chief Resident/Resident	Maine Medical Center	1984-1985
On-Call Physician	Northeast Florida State Hospital	1982-1983
Resident	University of Florida	1981-1983

Scientific Publications

Hepatitis C: a review. Yoho, RA, Cruz LL, Mazaheri R, Cruz AT. Plastic and Reconstructive Surgery, 2003 Aug;112(2):597-605.

Community Involvement

Institutional Review Board (Mission Hospitals)
Committee for Rural Healthcare Recapitalization
Asheville Jung Center Co-founder (Provider of Web-based Distance Learning)
Veritas Christian Academy Substitute Teacher, Library Committee (Chair)
Hope Chest, Medical Mission Projects

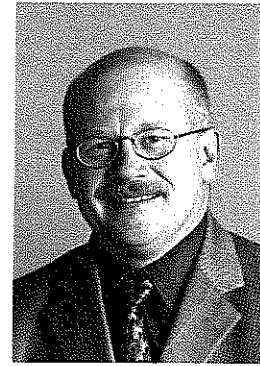


SCOTTY FARRIS, ASSOCIATE AIA, ASHE Technology Planner

Scotty Farris draws on thirty years of experience and has worked with hundreds of healthcare facilities as a facilitator for medical technologies. He has been involved in project delivery from conceptual and strategic planning, through design, construction, commissioning and occupancy.

Trained in the U.S. Navy, his clinical experience includes outpatient nursing, emergency room, and critical care units. Scott has also received specialized training on triage and management of mass casualties, biochemical attacks, radiation safety and other public health issues.

Scott is a widely published writer and frequent speaker on medical technology and facility design and construction issues.



RESPONSIBILITY:

Technology Planning

EDUCATION:

Diploma, Naval School of Health Sciences

EMT & Paramedic Certification, Naval Regional Medical Center

PROFESSIONAL AFFILIATIONS:

American Institute of Architects, Associate

American Society for Hospital Engineering

Baylor University Medical Center¹

Dallas, TX

- 150,000 sf Cancer Center

Cook Childrens Hospital³

Fort Worth, TX

- Replacement Hospital

University of California, Davis Medical Center¹

Davis, CA

- 1.3 million sf Diagnostic and Treatment Center Replacement

Hackensack Medical Center¹

Hackensack, NJ

- Cancer Treatment Center
- Non-invasive cardiology
- High speed electron beam CT
- Diagnostic imaging
- 12 Operating rooms
- Stem Cell Hematopoiesis Lab
- 550,000 sf

University of California San Diego¹

San Diego, CA

- 475,000 New Heart Hospital

Providence Newberg Medical Center¹

Newberg, OR

- 400,000 Replacement Hospital
- LEED Gold Project

University District Hospital, Sacred Heart¹

Eugene, OR

- 450,000 Major Renovation with Oncology

University of Iowa Hospitals & Clinics¹

Iowa City, IA

- New 100,000 sf Level One Trauma and Emergency Department

Sacred Heart Riverbend Medical Center & Medical Pavilion¹

Springfield, OR

- 1.5 million sf Replacement Hospital

Centennial Medical Center¹

Frisco, TX

- 500,000 sf New Hospital

Tulsa Heart Hospital²

Tulsa, OK

- New Hospital

Methodist Hospital¹

Sugar Land, TX

- New Hospital

Sheridan Memorial Hospital²

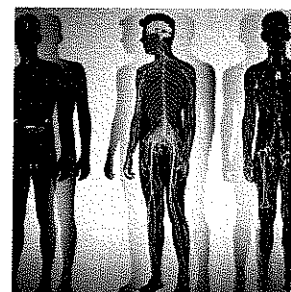
Sheridan, WY

- ED Renovation

St. Vincent Hospital²

Billings, MT

- OR Renovations





KATHERYN B. FRICKE, AIA Design Team Manager

Since joining FreemanWhite, Ms. Fricke has focused exclusively on healthcare facility master planning and departmental design. Prior to joining the firm, she graduated with a Master of Architecture from Clemson University in the Architecture and Health Studio. During the time, she spent four months in Italy studying European HealthCare Systems. A partial listing of Ms. Fricke's healthcare projects includes:



EDUCATION:

M. Arch., Healthcare Planning and Design, Clemson University

BS, Design, Clemson University

PROFESSIONAL ASSOCIATIONS:

American Institute of Architects

Academy of Architecture for Health

Forsyth Medical Center

Winston-Salem, NC

- Emergency department addition
- North Pavilion
- Technology II addition
- PET/CT renovation
- Medical Park Hospital interior renovations
- West Tower infill master plan and addition
- Physician reading room renovation
- Electrophysiology labs renovation
- Support services and dietary master plan
- Women's Center triage renovations
- West Campus Boulevard
- Education and Conference Center

The Medical Center of Central Georgia

Macon, GA

- Family Birth Center
- Cardiovascular ICU renovations

NorthEast Medical Center

Concord, NC

Hayes Family Center

- Clinical laboratory renovations
- Emergency department clinical support renovations
- Patient bed tower and pediatric vertical expansion

Northeast Georgia Health System

Gainesville, GA

- Master planning of women's center
- Women's and Children's Pavilion addition/renovation

Our Lady of Lourdes Regional Medical Center

Lafayette, LA

- Campus master plan
- Acadiana Heart Institute

Medical University of South Carolina*

Charleston, SC

- Laboratory expansion
- Campus planning

Westvaco Chemical Division*

North Charleston, SC

- Laboratory expansion

Roper Hospital Cancer Center*

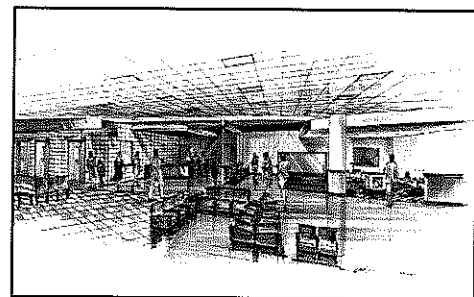
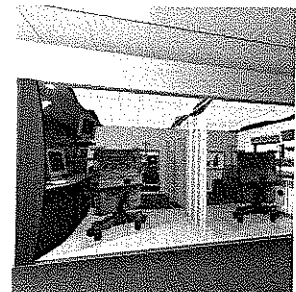
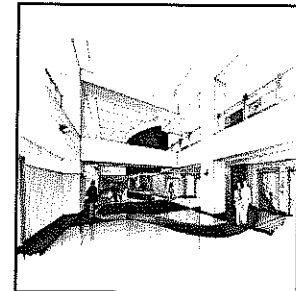
Charleston, SC

- Family hospitality suite

Jackson County Health Department*

Nicholson, GA

- Health Department renovation





J. SCOTT HESTER, AIA Senior Project Designer

Scott Hester brings over 25 years of healthcare and institutional experience to the FreemanWhite design team, and his experience includes working with the top hospitals in the nation. His designs, which take each project beyond the basic criteria while remaining within budget and on schedule, are on the cutting edge of new trends in healthcare. As a leader, he motivates his team to take projects to the highest level of design. A partial listing of Mr. Hester's recent healthcare projects includes:



EDUCATION:

Fellowship study under Louis I. Kahn

M. Arch., University of Pennsylvania

B. Arch., University of Michigan

REGISTRATIONS:

Registered Architect

NCARB Certified

Professional Affiliations

American Institute of Architects

North Carolina Society of Architects

Society for College and University Planning

St. Peter's Hospital

Albany, NY

- \$120 million inpatient pavilion and associated renovation
- Bridge connection to parking deck

Forsyth Medical Center

Winston-Salem, NC

- Master plan
- 550,000+ sf North Pavilion, including two new Centers of Excellence

The Medical Center of Central Georgia

Macon, GA

- Georgia Heart Center
- Orange Terrace parking structure

Good Neighbor Hospital

San Diego, CA

- 700-bed prototype hospital
- Healing environment

Spartanburg Regional Medical Center

Spartanburg, SC

- Master plan

NorthEast Medical Center

Concord, NC

- Outpatient cardiology/oncology center
- Parking structure

Johns Hopkins Hospital*

Baltimore, MD

- 500,000 sf Comprehensive Cancer Center with 240 beds

Detroit Medical Center – Rehab. Institute of Michigan*

Detroit, MI

- Wellness center and inpatient reconfiguration

William Beaumont Hospital*

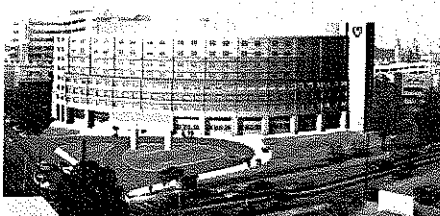
Royal Oak, MI

- Cancer, rehabilitation, and ambulatory care centers totaling over 500,000 sf
- Expansion of emergency, surgery, food service, and nursing

Presbyterian Hospital – Nalle Clinic*

Charlotte, NC

- 240,000 sf multi-specialty clinical office building





DOUGLAS METCALF, AIA Project Architect

With 29 years of experience in the design and construction of large-scale healthcare, institutional, commercial, and government projects, Mr. Metcalf typically leads project teams from schematic design through project close out. Recent projects include a \$62 million hospital and \$50 million mental health facility for the State of North Carolina, as well as a \$115 million Courthouse for Mecklenburg County, NC. Other projects include corporate headquarters, high-rise hotels, and office buildings on the east coast from Princeton, NJ, to Jacksonville, FL. Currently, Mr. Metcalf serves as lead project architect and is responsible for the development of contract documents and design coordination. His recent project experience includes:

Holy Redeemer Hospital and Medical Center

Meadowbrook, PA

- Emergency Department

The Mt. Sinai Medical Center

New York, NY

- Family Practice/Ambulatory Surgery Suite Renovations

Northeast Georgia Health System

Gainesville, GA

- Master planning of women's center
- Women and Children's Pavilion addition and renovation, including NICU

Bristol Regional Medical Center

Bristol, TN

- Emergency Department

Central Prison Medical Facility*

Raleigh, NC

- 120-bed regional medical facility

Central Prison Mental Health Facility*

Raleigh, NC

- 216-bed mental health facility

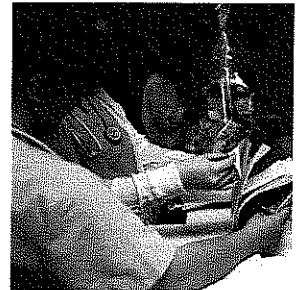
Other Projects of Significance*

- Mecklenburg County Courthouse, Charlotte, NC
- Charlotte Mecklenburg Police Headquarters, Charlotte, NC
- General Tire Corporate Headquarters, Charlotte, NC
- Omni Hotel, Jacksonville, FL
- 1,000-bed Federal Correctional Institution, Butner, NC
- Charlotte Latin Science Tech and Student Activities Center, Charlotte, NC



EDUCATION:

BS, University of Illinois,
Champaign





ASHLEY ALLEN Interior Architecture

Ashely started with FreemanWhite in 2005. In a few short years, she has attained the level of project designer through her detail and focus on projects and clients. Ashley is dedicated to promoting and providing excellent healthcare environments which show throughout her designs.



EDUCATION:

BS, Clemson University

Associate, Central Piedmont
Community College

St. Mary's Medical Center

Huntington, WV

- ICU
- Center of Education

Transylvania Community Hospital

Brevard, NC

- Administration relocation
- Bed expansion
- Lobby renovation

Mt. Sinai Medical Center

New York, NY

- Ambulatory services

Catawba Valley Medical Center

Hickory, NC

- Women & Children's
- Oncology and surgery expansion
- Sleep lab

The Medical Center of Central Georgia

Macon, GA

- Heart Tower

Northeast Georgia Health System

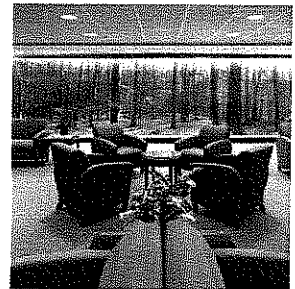
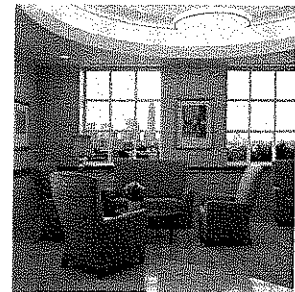
Allentown, PA

- Women and Children's pavilion

Bristol Regional Medical Center

Bristol, TN

- Emergency department renovation





WILLIAM RAKATANSKY, AIA, CSI, NCARB, LEED AP Code and Quality Assurance

Mr. Rakatansky has nearly 30 years of experience in all phases of code enforcement compliance, construction administration, and project management. He is called upon to share his in-depth knowledge of the new IBC with AIA Chapters across the country through lectures and seminars, and has educated and spoken at both the AIA and CSI National Conventions. Additionally, he is a Certified Level III Building Official in North Carolina, a member of International Code Council's Education Committee (ICC) with ICC Certification as a Building Plan Official, the National Fire Protection Association and the National Conference of States on Building Codes & Standards, Inc. He is also an International Code Council Certified Professional Instructor on the Building Code and a member of the NC Code Official Qualifications Board, which regulates, educates, and disciplines all code officials throughout the state of North Carolina. Mr. Rakatansky is also the recent author of an ICC publication entitled the Plan Review Manual which is used as a guide for code requirements, plan preparation and plan examination.

Of further interest, Mr. Rakatansky served for four years on the Mecklenburg County Board of Adjustments where he evaluated requests for zoning variances. This role required extensive knowledge of County codes in order to effectively consider petitions before the Board. Additionally, from 1995-1997, he served as Vice Chairman of the Town of Cornelius Planning Commission and, prior to moving to the Charlotte area, was heavily involved in the rezoning process, including numerous public hearings, for a potential project in Columbus, OH. Mr. Rakatansky also worked for Mecklenburg County Code Enforcement and recently led a series of third-party building code enforcement plan reviews for the County.

St. Peter's Hospital
Albany, New York

Givens Estate
Asheville, North Carolina

Englewood Hospital
Englewood, New Jersey

Lehigh Valley Hospital
Allentown, Pennsylvania

Carolinas Medical Center - NorthEast
Concord, North Carolina

Nash General Hospital
Rocky Mount, North Carolina

Huntington Hospital
Pasadena, California

Cabarrus Memorial Hospital*
Concord, North Carolina

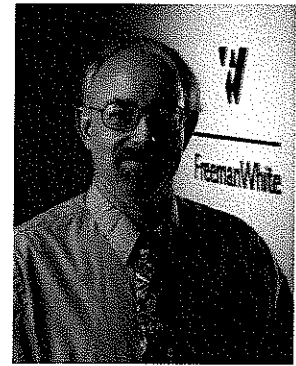
Martha Jefferson Hospital
Charlottesville, Virginia

South Minster Retirement Center
Charlotte, North Carolina

Forsyth Medical Center
Winston-Salem, North Carolina

Hillside Village
Peoria, Illinois

WakeMed
Raleigh, North Carolina



EDUCATION:

B. Arch., Ohio University

REGISTRATIONS:

IN, KY, OH, NC

NCARB Certified

PROFESSIONAL AFFILIATIONS:

American Institute of
Architects

2007 Chair, AIA Building
Science and Performance
Advisory Committee

NC AIA Building Committee

Charlotte Chapter Past
President, Construction
Specifications Institute

International Code Council

National Fire Protection
Association

National Conference of
States on Building Codes and
Standards

Past Board Member,
Mecklenburg County Zoning
Board of Adjustment

*Indicates personal experience gained prior to joining FreemanWhite



MICHAEL P. WESNER, PE, LEED AP
VP of Mechanical Engineering, Scheeser Buckley Mayfield



Mr. Wesner joined the consulting firm of Scheeser Buckley Mayfield LLC, which was then known as Scheeser*Buckley*Keyser, in 1981, and during his first few years with the firm, he was heavily involved with the Title III of the National Energy Conservation Policy Act (NECPA). This governmental program was established as a cost sharing energy conservation grant program and provided funds to study the operation of schools and hospitals to determine if there were ways to reduce their energy consumption. The program then funded energy conservation measures identified in the reports. As a result of this involvement in many audits and retrofit programs for numerous healthcare and institutional buildings, Mr. Wesner gained valuable experience in formulating and implementing energy conservation programs in buildings that result in real world savings. This experience carries on in the work he does today.

For nearly 30 years, Mr. Wesner's project experience has been concentrated in:

- Large hospital expansion and remodeling projects;
- Hospital boiler plant/chiller plant replacement projects;
- University laboratory projects, both new construction and renovation;
- University classroom facilities;
- University dormitory facilities;
- Animal research facilities;
- Secondary education facilities;
- Industrial facilities;
- Telephone/communications buildings; and
- Recreation/athletic fitness centers.

On all of the above facility types, Mr. Wesner has acted as the firm's principal-in-charge. In this capacity, he has been the single point of contact and is responsible for making sure the project is completed on time and on budget. A representative project listing includes:

Kings Daughter Medical Center

Ashland, KY

- Heart Center
- Power plant expansion

Thomas Memorial Hospital

Charleston, WV

- Clinic Expansion (includes new lab)
- Diagnostic Cardiology

Thomas Memorial Hospital

South Charleston, WV

- Medical office pavilion

VA Medical Center

Beckley, WV

- Nursing home

St. Mary's Hospital

Huntington, WV

- Chiller plant renovation
- ICU/CCU
- Special procedures #3

EDUCATION:

BS, Mechanical Engineering,
Ohio State University

REGISTRATIONS:

Professional Engineer

LEED Accredited Professional

PROFESSIONAL AFFILIATION:

ASHRAE

ASPE

NFPA

BOCA



VINCENT J. FEIDLER, PE
Mechanical Engineer, Scheeser Buckley Mayfield

Mr. Feidler has served as lead mechanical engineer on a wide variety of projects, primarily for healthcare facilities and universities, and has extensive experience in all aspects of the design of mechanical systems for buildings, including advanced HVAC, plumbing, and fire protection systems. He also acts as the Project Manager for his projects within the office, coordinating the design team's efforts to ensure a quality project, with emphasis on design deadlines and construction budgets.

Larger projects in Mr. Feidler's background include a 220,000 sf Heart Center and 75,000 sf Medical Office Building for the King's Daughters Medical Center in Ashland, KY, which total \$75 million in construction; and the 165,000 sf addition to Camden Clark Memorial Hospital in Parkersburg, WV, which is the first major addition to this hospital in several years. It incorporated 11 operating rooms, critical and normal intensive care units, central sterile, endoscopy suite, and other related functions. Also, a new chiller plant and new boiler were added on both projects to account for the needs of the additions. Mr. Feidler has also designed multiple smaller scale projects such as 9,000 sf addition to the Mid Ohio Valley Center and 36-bed ICU/CCU addition to the St. Mary's Hospital.

Mr. Feidler's experience has included projects for Marshall University, Ohio State University, Muskingum College, Thomas Memorial Hospital, Barberton Citizens Hospital, VAMC – Beckley, Ohio Agricultural Research and Development Center, West Virginia School of Osteopathic Medicine, Kanawha County Schools, and Lakeland Community College. Projects which Mr. Feidler has been actively involved in mechanical design include:

Kings Daughter Medical Center

Ashland, KY

- Heart Center
- Power plant expansion
- 75,000 sf medical office building

Thomas Memorial Hospital

Charleston, WV

- Clinic expansion
- Diagnostic cardiology

VA Medical Center

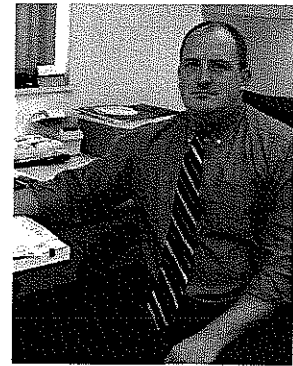
Beckley, WV

- Nursing home

St. Mary's Hospital

Huntington, WV

- Chiller plant renovation
- 36-bed ICU/CCU
- Special procedures #3



EDUCATION:

B. Arch. Eng., HVAC Systems Design, Pennsylvania State University

REGISTRATIONS:

Professional Engineer
OH

PROFESSIONAL AFFILIATION:

American Society of Heating, Refrigeration, and Air Conditioning Engineers



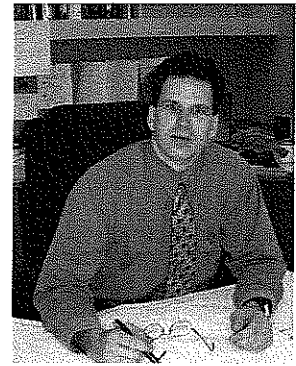
MARLON C. HATHAWAY, PE
 VP of Electrical Engineering, Scheeser Buckley Mayfield

While at The University of Akron, where he earned his Bachelor of Science in Electrical Engineering, Mr. Hathaway accepted a position through the cooperative education program at the Veteran's Administration Medical Center in Brecksville, OH. During this engagement he gained knowledge of the construction industry.

After graduation, Mr. Hathaway began his career as a consulting engineer with Scheeser Buckley Mayfield LLC. He has since been involved with all aspects of electrical design, including: lighting, power distribution, telecommunications systems, fire alarm systems, video/security systems, nurse call systems and CATV/MATV distribution systems. Mr. Hathaway's responsibilities include both budget and finish electrical construction estimates. He has worked closely with electrical contractors on recent owner requested design/build projects.

During his consulting career, Mr. Hathaway has designed many hospital and healthcare related buildings. His experiences cover a wide spectrum in this specific field, including: OR suites, pathology labs, emergency and trauma rooms, and medical office buildings. He has prepared contract documents for complex electrical medical equipment, including: x-ray, CT scanners, and digital video processing equipment.

Mr. Hathaway has extensive experience in the design of complex systems such as fire alarm, audio/video, telecommunications (LAN) systems, and CATV/MATV distribution systems. He is currently a member of the Illuminating Engineering Society (IES), Cleveland Section and has also served as Treasurer in past years.



EDUCATION:

BS, Electrical Engineering, The University of Akron

REGISTRATIONS:

Professional Engineer
 WV, OH, KY, PA, FL

PROFESSIONAL AFFILIATION:

ASHRAE
 ASPE
 NFPA
 BOCA

Kings Daughter Medical Center

Ashland, KY

- Heart Center

Thomas Memorial Hospital

Charleston, WV

- Ambulatory Care Center

St. Elizabeth Hospital

Boardman, OH

- Inpatient hospital addition

Summa / Akron City Hospital

Akron, OH

- EP labs

Ohio State University

University Hospital

Columbus, OH

- East endoscopy and digestive health renovation

VAMC Wade Park

Cleveland, OH

- Renovate labs, K-Wing Phase I and II

WV School of Osteopathic Medicine

Lewisburg, WV

- Science and Technology Center, Science Building addition

Kent State University

Ashtabula, OH

- Health & Science Building

Ohio State University

Columbus, Ohio

- University Hospitals East emergency department expansion

Camden-Clark Memorial Hospital

Parkersburg, WV

- New surgical addition



J. GREGORY SLIGER, PE
Structural Engineer, Steven Schaefer Associates

As team leader, Mr. Sliger oversees the work of his entire technical team. In this role, he has worked on projects of varying sizes, complexity and materials. He both contributed to the structural design and acted as the project review engineer on all of the following projects.

Marshall University Recreation Center
Huntington, WV

Clinical Education and Outreach Center

- Five-story building and adjacent parking structure
- Expands teaching space offered by the School of Medicine

Robert C. Byrd Biotechnology Science Center

- 144,000 sf laboratory
- 200 foot pedestrian bridge connection to existing science building across the street

Forensic Science Center

- 8,000 sf
- Two stories
- Addition to existing single-story Forensic Science Center

Student Housing

- Housing and dining complex with housing for 500 students and dining for 300
- Four four-story residence halls totaling approximately 160,000 sf

Recreation Center

- 125,000 sf
- Three stories
- Steel framed recreation, health and wellness center

Greenbrier County Public Library

Lewisburg, WV

- 13,000 sf
- Two stories
- Sloped site allows on-grade entrances to both levels

King's Daughters Medical Center
Ashland, KY

- 20,000 sf outpatient imaging center
- Steel frame designed to accommodate three-story addition to existing two stories

Thomas Memorial Hospital
South Charleston, WV

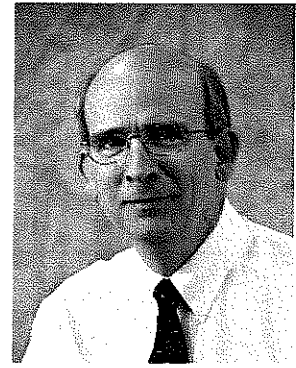
- 86,000 sf medical office building
- 17,000 sf wing connection to existing hospital
- Five stories
- Expansion capability for future five-story clinical wing adjacent to MOB

Hoyer Building
Charleston, WV

- Renovation of historic building

Oddfellows Hall
Covington, KY

- Temporary bracing system to stabilize remaining masonry walls after 150-year old structure gutted by fire
- Design of new structure to fit within remaining walls and innovative reinforced concrete mat slab foundation



EDUCATION:

MS, Civil Engineering,
University of Cincinnati

BS, Civil Engineering,
University of Cincinnati

REGISTRATIONS:

KY, OH, TX, UT, WV

PROFESSIONAL AFFILIATIONS:

American Society of Civil
Engineers

American Institute of
Architects – West Virginia

American Concrete Institute
Concrete Reinforcing Steel
Institute

Structural Engineers
Association of Ohio



RYAN M. KONST, PE
Structural Engineer, Steven Schaefer Associates

Mr. Konst's role in the following projects is that of project manager and project engineer. As project manager, he oversees the work done by other team members such as detailers. He was also the project engineer, providing the actual structural design for each.



St Mary's Hospital

Huntington, WV

- 25,000 sf Intensive Care Unit addition
- 34 new beds

Thomas Memorial Hospital

South Charleston, WV

Medical Office Building

- 86,000 sf medical office building
- 17,000 sf wing connection to existing hospital
- Five stories
- Expansion capability for future five-story clinical wing adjacent to MOB

Imaging Center

- 10,900 sf outpatient imaging center
- One story

King's Daughters Medical Center

Ashland, KY

Heart and Vascular Center

- \$43.5 million
- Five stories
- Steel frame designed to accommodate expansion to 10 stories for a total of 400,000 sf

Medical Plaza Building B

- 76,000 sf medical office building
- Four stories
- Frame designed to accommodate expansion to 10 stories for a total of 190,000 sf

Outpatient Imaging Center

- 20,000 sf
- Two stories
- Steel frame designed to accommodate expansion to five stories

Marshall University

Huntington, WV

- Robert C. Byrd Biotechnology Science Center
- 144,000 sf laboratory
- 200 foot pedestrian bridge connection to existing science building across the street

Sycamore Financial Center

Cincinnati, OH

- 160,000 sf office building
- Five stories
- Single story of partially below grade parking
- Single story post-tensioned parking garage

Centre Pointe Building 5

Cincinnati, OH

- 135,000 sf office building
- Four stories
- Underground parking with direct access to offices

EDUCATION:

BS, Civil Engineering,
University of Cincinnati

REGISTRATIONS:

IN, KY, OH, WV

PROFESSIONAL AFFILIATIONS:

American Society of Civil
Engineers

American Institute of Steel
Construction

American Institute of
Architects

American Concrete Institute




CONSTRUCTION MANAGEMENT



CONSTRUCTION MANAGEMENT

Construction Administration (CA) at Kreps and Zachwieja/FreemanWhite is a specialty that is integrated into our project teams from the beginning of each project. Our CA professionals include Certified Construction Contract Administrators (CCCA), as certified by the Construction Specifications Institute (CSI), as well as architects and engineers with an average of 20 years of experience in the construction and delivery of healthcare projects. The Kreps and Zachwieja/FreemanWhite CA process is a documented approach using proven methods to guide and monitor the construction process systematically from pre-construction to project close out. The advantage of our CA professionals being embedded in each architectural studio is that they work with the designers, project architects and engineers from the start of each project, bringing a perspective of constructability and practicality that ultimately helps us achieve our overall goals and outstanding design.

QUALITY CONTROL PROCESS



We are proud of our errors and omissions record. Compared with other healthcare firms, FreemanWhite is less than one-eighth the national average for errors and omissions. Beyond all of the firm's quality control means, Kreps and Zachwieja/FreemanWhite employs a series of extended review measures. First and foremost, we practice consistent communication and dialogue throughout the design and construction process. On-site charrette sessions, workshops, and reviews promote and reinforce the client's role, participation in the process, and a sense of ownership. Second, within the Kreps and Zachwieja/FreemanWhite organization, the design product is peer reviewed by our professional staff before presentation to the client or contractor. We realize that no project is perfect and; therefore, set aside a contingency percentage in the project budget for project changes during construction. This allows the team to focus on solutions to issues rather than finger pointing.

The Kreps and Zachwieja/FreemanWhite management approach focuses on collaboration and communication with all team members, both internally and externally. Our clients are the focal point of our project approach, and we include them as members of the team and utilize them as resources, critics, and final decision makers.

Effective communication between all team members will drive the success of this project. To meet expectations, it is important to develop a partnership between all parties early in the design process, and one of Kreps and Zachwieja/FreemanWhite's critical roles on this project will be to organize and maintain clear communication between all team members.

ADHERENCE TO ESTABLISHED TIMELINES

Since all of our clients are institutional in nature, Kreps and Zachwieja/FreemanWhite is acutely aware of the relationship between design and construction project management, facilities personnel, procurement, building users and their agencies, zoning and regulatory agents, and community groups. We believe the key to meeting schedule requirements is to define project milestones clearly, understand the goals of specific tasks, and make a personal commitment to meeting the schedule in terms of manpower allocation and personnel involvement. Each of the team members identified for your project is ready to make that personal commitment.



**PERMITTING &
REGULATORY APPROVALS**




PERMITTING/REGULATORY APPROVALS

FEDERAL AND STATE DEPARTMENTS

There are few industries more complex than healthcare and few firms that have the resources, technology and know-how to navigate this rapidly changing market. FreemanWhite works regularly with state officials on zoning and approvals in several states, and we strive to establish good relationships at the earliest phases of the project. FreemanWhite considers federal, state, and local agencies part of the project team throughout the design and construction phases of the project. With current projects in West Virginia, FreemanWhite has developed successful working relationships with governing agencies and possesses exhaustive knowledge of both building code and licensure requirements.

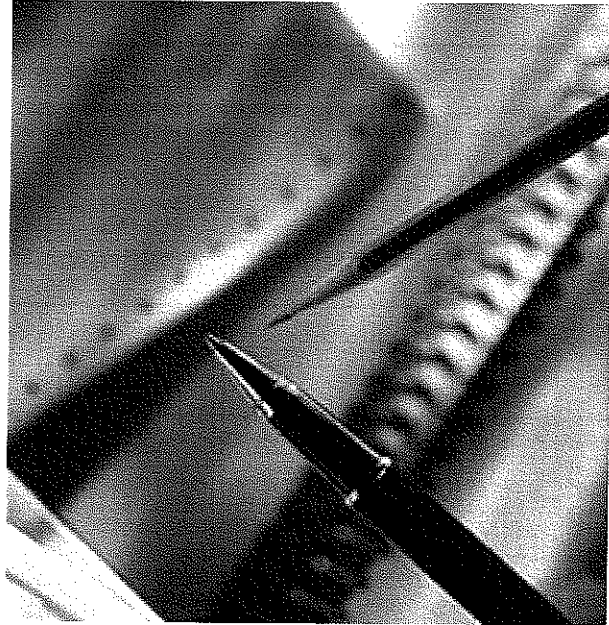
Bringing invaluable relationships with West Virginia regulatory agencies is Kreps & Zachwieja Architects/Consultants, Inc. The firm has been providing architectural services in West Virginia, specifically to the healthcare industry, for the past 62 years. During that period, Kreps & Zachwieja has worked with almost every federal and state agency involved with the design and construction process. Their extensive experience includes working with the West Virginia State Fire Marshal's Office, particularly Mr. Norm Fetterman, and with Mr. Ron Stricker of the West Virginia Office of Health Facility Licensure and Certification (OHFLAC).



Kreps & Zachwieja's offices are strategically located in Charleston, WV, providing easy access to both of these State Agencies. Of particular note, they literally enjoy a next door neighbor relationship with OHFLAC with whom they are in contact with on a regular basis regarding their ongoing West Virginia projects. They have found this relationship to be useful in the planning and review stages of their projects in preventing any last minute costly changes or time delays to the owner.

Additionally, this team includes William Rakatansky, AIA, CSI, NCARB, LEED AP, FreemanWhite's in-house code expert. He is instrumental in our collaboration with government representatives and code review officials. Mr. Rakatansky is called upon to share his in-depth knowledge of the new IBC with AIA Chapters across the country through lectures and seminars, and has educated and spoken at both the AIA and CSI National Conventions.

Mr. Rakatansky is a member of International Code Council (ICC) with ICC Certification as a Building Plan Official, the National Fire Protection Association and the National Conference of States on Building Codes & Standards, Inc. He is also a member of the NC Code Official Qualifications Board, which regulates, educates, and disciplines all code officials throughout the state of North Carolina.





APPENDIX



State of West Virginia
 Department of Administration
 Purchasing Division
 2019 Washington Street East
 Post Office Box 50130
 Charleston, WV 25305-0130

Request for Quotation

RFQ NUMBER
 WSH90086

PAGE
 1

ADDRESSES/RESPONDENCE TO ATTENTION OF
 ROBERTA WAGNER
 304-558-0067

PROBID

*213123617 704-586-2327
 FREEMANWHITE INC
 8945 RED OAK BLVD
 CHARLOTTE NC 28217

SHIP TO

HEALTH AND HUMAN RESOURCES
 WILLIAM R. SHARPE JR. HOSPITAL
 CENTRAL RECEIVING
 936 SHARPE HOSPITAL ROAD
 WESTON, WV 26452
 304-269-1210

DATE PRINTED	TERMS OF SALE	SHIP VIA	FOB	FREIGHT TERMS
11/19/2008				

BID OPENING DATE		BID OPENING TIME	
13/04/2008		01:00PM	

LHS	QUANTITY	UNIT	CAT. NO.	ITEM NUMBER	UNIT PRICE	AMOUNT
ADDENDUM NO. 2 1. QUESTIONS AND ANSWERS ATTACHED. 2. ADDENDUM ACKNOWLEDGEMENT IS ATTACHED. THIS DOCUMENT SHOULD BE SIGNED AND RETURNED WITH YOUR BID. FAILURE TO SIGN AND RETURN MAY RESULT IN DISQUALIFICATION OF YOUR BID. EXHIBIT 10 REQUISITION NO.: WSH90086 ADDENDUM ACKNOWLEDGEMENT I HEREBY ACKNOWLEDGE RECEIPT OF THE FOLLOWING CHECKED ADDENDUM(S) AND HAVE MADE THE NECESSARY REVISIONS TO MY PROPOSAL, PLANS AND/OR SPECIFICATION, ETC. ADDENDUM NO. 1 <i>[Signature]</i> NO. 2 <i>[Signature]</i> NO. 3 NO. 4 NO. 5 I UNDERSTAND THAT FAILURE TO CONFIRM THE RECEIPT OF THE ADDENDUM(S) MAY BE CAUSE FOR REJECTION OF BIDS. VENDOR MUST CLEARLY UNDERSTAND THAT ANY VERBAL REPRESENTATION MADE OR ASSUMED TO BE MADE DURING ANY						

SEE REVERSE SIDE FOR TERMS AND CONDITIONS

SIGNATURE	TELEPHONE	DATE
TITLE	FAX	ADDRESS CHANGES TO BE NOTED ABOVE

WHEN RESPONDING TO RFQ, INSERT NAME AND ADDRESS IN SPACE ABOVE LABELED 'VENDOR'



State of West Virginia
 Department of Administration
 Purchasing Division
 2019 Washington Street East
 Post Office Box 50130
 Charleston, WV 25305-0130

**Request for
 Quotation**

RFQ NUMBER
 WSH90086

PAGE
 2

ADDRESS CORRESPONDENCE TO ATTENTION OF
 ROBERTA WAGNER
 304-558-0067

*213123617 704-586-2327
 FREEMANWHITE INC
 8845 RED OAK BLVD
 CHARLOTTE NC 28217

HEALTH AND HUMAN RESOURCES
 WILLIAM R. SHARPE JR. HOSPITAL
 CENTRAL RECEIVING
 936 SHARPE HOSPITAL ROAD
 WESTON, WV
 26452 304-269-1210

DATE PRINTED	TERMS OF SALE	SHIP VIA	FOB	FREIGHT TERMS
11/19/2008				

BID OPENING DATE: 12/04/2008 BID OPENING TIME: 01:30PM

LINE	QUANTITY	UNIT	UNIT PRICE	AMOUNT
------	----------	------	------------	--------

ORAL DISCUSSION HELD BETWEEN VENDOR'S REPRESENTATIVES AND ANY STATE PERSONNEL IS NOT BINDING. ONLY THE INFORMATION ISSUED IN WRITING AND ADDED TO THE SPECIFICATIONS BY AN OFFICIAL ADDENDUM IS BINDING.

Walter T. Zachewja
 SIGNATURE

Kreps & Zachewja

COMPANY

December 3, 2008

DATE

REV. 11/96

END OF ADDENDUM NO. 2

SEE REVERSE SIDE FOR TERMS AND CONDITIONS

SIGNATURE TELEPHONE DATE

TITLE FEIN ADDRESS CHANGES TO BE NOTED ABOVE

WHEN RESPONDING TO RFQ, INSERT NAME AND ADDRESS IN SPACE ABOVE LABELED 'VENDOR'

STATE OF WEST VIRGINIA
Purchasing Division

PURCHASING AFFIDAVIT

VENDOR OWING A DEBT TO THE STATE:

West Virginia Code §5A-3-10a provides that: No contract or renewal of any contract may be awarded by the state or any of its political subdivisions to any vendor or prospective vendor when the vendor or prospective vendor or a related party to the vendor or prospective vendor is a debtor and the debt owed is an amount greater than one thousand dollars in the aggregate.

PUBLIC IMPROVEMENT CONTRACTS & DRUG-FREE WORKPLACE ACT:

West Virginia Code §21-1D-5 provides that: Any solicitation for a public improvement construction contract shall require each vendor that submits a bid for the work to submit at the same time an affidavit that the vendor has a written plan for a drug-free workplace policy in compliance with Article 1D, Chapter 21 of the West Virginia Code. A public improvement construction contract may not be awarded to a vendor who does not have a written plan for a drug-free workplace policy in compliance with Article 1D, Chapter 21 of the West Virginia Code and who has not submitted that plan to the appropriate contracting authority in timely fashion. For a vendor who is a subcontractor, compliance with Section 5, Article 1D, Chapter 21 of the West Virginia Code may take place before their work on the public improvement is begun.

ANTITRUST:

In submitting a bid to any agency for the state of West Virginia, the bidder offers and agrees that if the bid is accepted the bidder will convey, sell, assign or transfer to the state of West Virginia all rights, title and interest in and to all causes of action it may now or hereafter acquire under the antitrust laws of the United States and the state of West Virginia for price fixing and/or unreasonable restraints of trade relating to the particular commodities or services purchased or acquired by the state of West Virginia. Such assignment shall be made and become effective at the time the purchasing agency tenders the initial payment to the bidder.

I certify that this bid is made without prior understanding, agreement, or connection with any corporation, firm, limited liability company, partnership or person or entity submitting a bid for the same materials, supplies, equipment or services and is in all respects fair and without collusion or fraud. I further certify that I am authorized to sign the certification on behalf of the bidder or this bid.

LICENSING:

Vendors must be licensed and in good standing in accordance with any and all state and local laws and requirements by any state or local agency of West Virginia, including, but not limited to, the West Virginia Secretary of State's Office, the West Virginia Tax Department, West Virginia Insurance Commission, or any other state agencies or political subdivision. Furthermore, the vendor must provide all necessary releases to obtain information to enable the Director or spending unit to verify that the vendor is licensed and in good standing with the above entities.

CONFIDENTIALITY:

The vendor agrees that he or she will not disclose to anyone, directly or indirectly, any such personally identifiable information or other confidential information gained from the agency, unless the individual who is the subject of the information consents to the disclosure in writing or the disclosure is made pursuant to the agency's policies, procedures and rules. Vendors should visit www.state.wv.us/admin/purchase/privacy for the Notice of Agency Confidentiality Policies.

Under penalty of law for false swearing (West Virginia Code §61-5-3), it is hereby certified that the vendor acknowledges the information in this said affidavit and is in compliance with the requirements as stated.

Vendor's Name: Kreps and Zachwieja Architects/Consultants, Inc.

Authorized Signature:  Date: NOVEMBER 26, 2008