

December 3, 2008

Purchasing Division
2019 Washington Street, East
P.O. Box 50130
Charleston, WV 25305-0130

RE: New Patient Care Unit at William R. Sharpe Jr. Hospital (WSH90086)

Dear Selection Committee:

Creating a new patient unit at the William R. Sharpe Jr. Hospital will require a team of experienced professionals and key staff of the State and the Hospital working together to develop the best solution. Based on our walk-through of the existing facility and our conversations with key staff, many things in the current facility's design could be improved upon in this new addition.

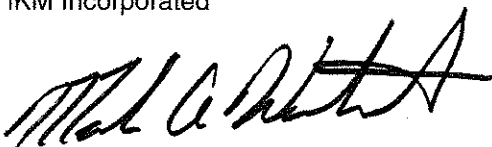
IKM Incorporated has built a strong reputation as healthcare planners and architects, and we have over 30 years of experience with behavioral health facilities. We have completed new Psychiatric Hospitals at Lakewood and Southwood in Southwestern Pennsylvania; several projects for Western Psychiatric Institute and Clinic and Mayview Hospital; and similar facilities for the Veterans Administration. We have a good understanding of the patient and their needs.

Environmental design, that creates home-like environments for the residents, is a potential solution to meet your needs including the demand for more beds. We encourage the creation of a home-like environment that provides the safety features and security measures required for the patients and the staff of the hospital. We also view this as an opportunity to investigate "green" design principles that we could apply to this project. We can explore alternative energy sources such as geo-thermal and wind as well as the most efficient HVAC equipment to cut energy costs. We look forward to sharing these ideas with you in person.

IKM has completed numerous projects in the state of West Virginia so we very familiar with the fire code and the department of health review process. We have completed healthcare projects for Putnam General Hospital, West Virginia University Hospitals, Mon General Hospital and medical office and ambulatory facilities in Martinsburg, WV. We have also completed several projects on the campus of WVU, including, most recently, the new Alumni Center.

We have carefully responded to your request for qualifications. If you have any questions about our firm and our experience, please feel free to contact me. We look forward to working with you on this new addition to the hospital. Thank you.

Sincerely,
IKM Incorporated



Mark A. Witouski
Vice President

IKM Incorporated
One PPG Place
Pittsburgh, PA 15222
Tel: 412-281-1337
Tel: 412-281-4639
www.ikminc.com

RECEIVED

2008 DEC -4 A 10:53

PURCHASING DIVISION
STATE OF WV

Alan A. Axelson, MD, CEO
InterCare Psychiatric Services
180 Fort Couch Road
Pittsburgh, PA 15241

February 13, 2005

To Whom It May Concern:

I first met Mike Marcu and the architectural team at IKM in 1973 at Western Psychiatric Institute and Clinic. I was completing my fellowship in child psychiatry and they were directing the renovation of a floor into a psychiatric treatment unit for children. I was amazed that they had been able to transform an austere and somewhat foreboding space into a warm, safe, therapeutic environment. I was still in the process of developing my understanding of how to integrate patients, staff, program and space to bring about therapeutic change. Together we began an exploration of the interface of psychiatry and architecture. We formed a creative working relationship and in time generated three significant projects.

In 1976 the Pennsylvania Mental Health Department decided to locate a long term psychiatric treatment unit for children at Mayview, an adult state psychiatric hospital. The interior of best location available, the ground floor of a relatively new building, was totally unsuitable. Its large ward and hard surfaces bore witness to a design with durability and low maintenance, rather than patient care as determining principles. Using the relationship begun at WPIC, a small amount of grant money and IKM's interest in accepting a challenge, the space was transformed into an island of warmth and caring that brought out the best in the staff, the children and their families. Using simple materials in innovative ways, a project that "couldn't be done" came in on time and on budget. The Children's Center opened to provide a therapeutic environment, treating children for nearly two decades. The design communicated that even in the midst of a large bureaucratic institution; care could be responsive and personal. It set a tone that involved the staff in positive therapeutic interactions with the children and their families.

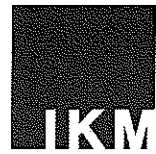
IKM actually donated most of their services to that state hospital project. They made only one request. "If you ever build another psychiatric facility, we get a chance to be the architects." I agreed with little thought that I would ever have the opportunity to make good on the promise. The experience of working with children in a therapeutic inpatient setting was so powerful and intriguing that it prompted me to start on a new venture with the three other psychiatrists from the Children's Center to build Southwood Psychiatric Hospital nearby in 1984. Using what we had learned from our work at Mayview and without the constraints of renovating an existing building, we found expression to our shared creativity. We were able to blend the child's need for comfort, education and play with the requirements for safety, control and treatment. The environment was secure without being excessively restrictive. We were able to accommodate for efficient operations and staffing without that being an obvious objective. Construction costs and maintenance were reasonable. The most important factor was how the environment supported the treatment programs. This was recognized again and again when families came into the facility and said "we never expected anything like this". Southwood continues today as a psychiatric treatment facility for children.

Our third project together was a private psychiatric hospital for adults built in northern Washington County in 1990. It was yet another iteration of the blending of psychiatric treatment principles supported by physical design and structure. The needs of adults dealing with psychiatric illnesses are different than those children. The environment needs to support and

channel therapeutic interactions even when the person experiencing a psychiatric illness is unable to make a commitment to treatment at that phase of their illness. Lakewood communicated respect and caring. It also supported a therapeutic philosophy of the individual being truly engaged in the treatment process, with family and community supports being involved as well. Individuals who had experienced psychiatric hospitalization were consulted in the design and provided valuable input into how they wanted to be treated. The facility was successful in identifying itself as a unique environment, supportive of individuals struggling to recover from serious psychiatric illness.

IKM has a long term commitment to the development of psychiatric treatment facilities as well as a wide variety of healthcare facilities. It is in an excellent position to design and implement a vision to address current and future needs for psychiatric treatment.

Alan A. Axelson,
Board Certified Psychiatrist
Medical Director and Chief Executive Officer
InterCare Psychiatric Services



architecture
planning
interior design



Table of Contents

Section 1	Healthcare Overview
Section 2	Experience <ul style="list-style-type: none">- Patient Units- Food Service- Efficiency, Energy Consumption- Selected Healthcare Projects
Section 3	Staff & Resources <ul style="list-style-type: none">- Resumes- Accuracy of Drawings
Section 4	Construction Phase Services <ul style="list-style-type: none">- Construction Services- Permitting & Regulatory Approvals- West Virginia Experience
Section 5	Addendum Pages

One PPG Place
Pittsburgh, PA
15222

T: 412-281-1337
F: 412-281-4639

Healthcare Overview



architecture
planning
interior design

IKM Incorporated
One PPG Place
Pittsburgh, PA 15222
phone: 412.281.1337
fax: 412.281.4639
www.ikminc.com

Year Founded: 1911,
Pittsburgh, PA

Number of People: 41

Principals:

John C. Schrott, AIA, ACHA
President, Principal

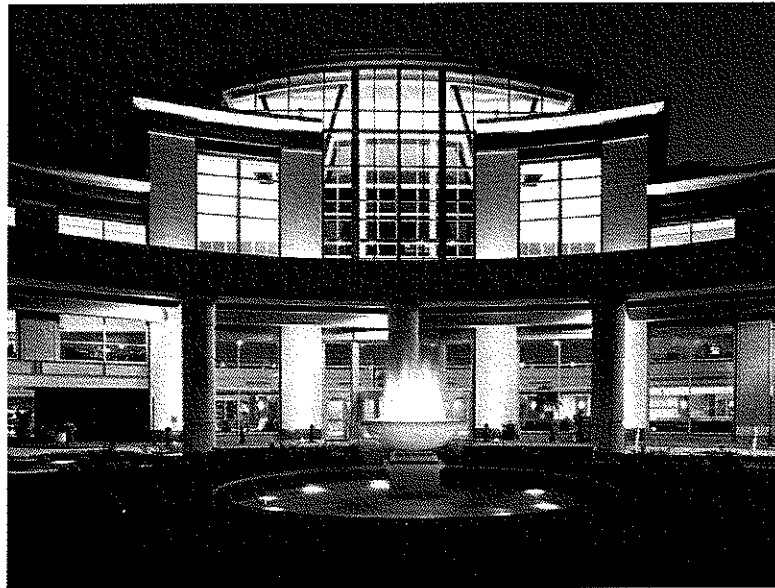
Jeffrey K. Brown, AIA, NCARB
Principal

Joel Bernard, AIA
Principal

Roger Hartung, AIA, NCARB
Principal

Michael McDonnell, AIA
Principal

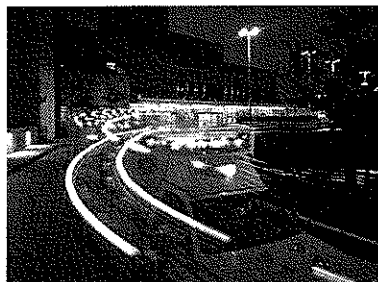
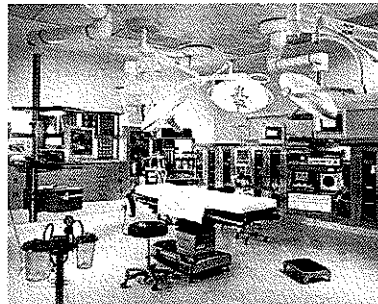
"...we focus on understanding the business of healthcare, placing ourselves in the position of patient, clinician, and administrator and focusing on the holistic approach..."



IKM Incorporated is an architecture, planning and interior design firm, founded in Pittsburgh in 1911, which specializes in design for healthcare and long-term care institutions.

Throughout our long history, we have provided design and planning services to prominent hospitals, clinics, physicians' practices and medical teaching and research facilities. Nearly 85% of our current work is generated by our health care clients, and over 90% of our work is for repeat clients, a testimonial to our ability to solve our clients' most complex needs, meet their budgets and respect their timetables.

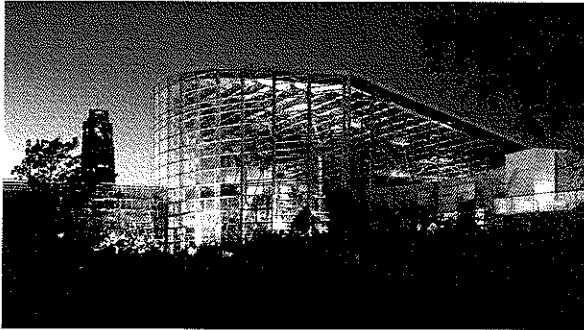
Our current client base ranges from large, urban hospitals and teaching universities to smaller suburban and rural hospitals, to



Awards & Recognition



architecture
planning
interior design



Tropical Forest, Phipps Conservatory

**2007 Engineers Society of Western Pennsylvania,
Commercial Project of the Year**

Phipps Conservatory and Botanical Gardens
Tropical Forest

2007 AIA Pittsburgh Green Design Citation

Phipps Conservatory and Botanical Gardens
Tropical Forest

2007 Western PA Golden Trowel Award

International Masonry Institute
Grove City College Colonial Hall Student Housing

2006 Preservation Award

City Historic Review Commission
Phipps Conservatory and Botanical Gardens
Welcome Center

**2006 Leadership in Energy and Environmental
Design (LEED®) Silver Certification**

Phipps Conservatory and Botanical Gardens
Welcome Center

Finalist Over \$5 Million 2006

Master Builders' Association of Western PA
Caryl Gates Gluck Resource Center at Animal
Friends

2005 Award of Excellence

Associated Builders and Contractors, Inc.,
Keystone Chapter
Lancaster Orthopedic Center, Lancaster General
Hospital

2005 Award of Merit

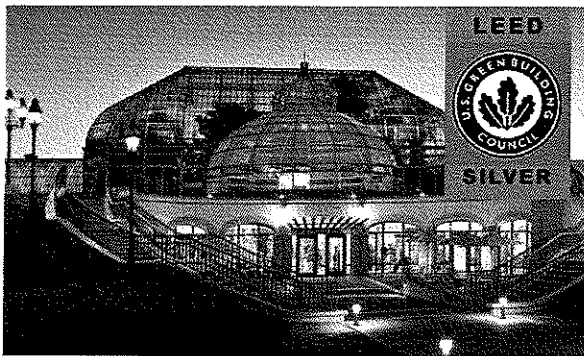
Associated Builders and Contractors, Inc.,
Keystone Chapter
Lancaster Orthopedic Center (Overbuild & Tower),
Lancaster General Hospital

**2005 Center for Health Design, Architectural
Showcase**

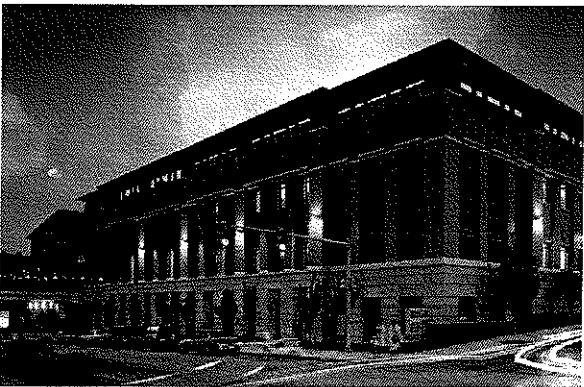
Lancaster Orthopedic Center, Lancaster General
Hospital

**2005 Center for Health Design, Architectural
Showcase**

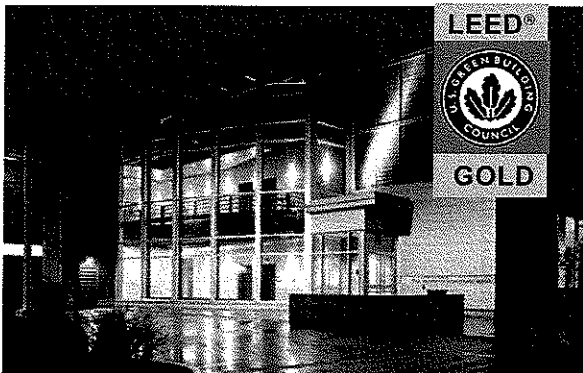
Hillman Cancer Center, UPMC Health System



Welcome Center, Phipps Conservatory



Hillman Cancer Center, UPMC Health System



McGowan Institute of Regenerative Medicine

Awards & Recognition



architecture
planning
interior design



Women and Babies' Hospital of Lancaster General

2001 Master Builders Award Design/Build Category

Master Builders Association
Adaptive Reuse of the Allegheny County Jail

Merit Award

AIA Pennsylvania
Adaptive Reuse of The Allegheny County Jail

Best Rehabilitation/Restoration/Renovation Award National Design Build Award

Design Build Education and Research Foundation
Adaptive Reuse of The Allegheny County Jail

Finalist

Business Week / Architectural Record Magazine
Adaptive Reuse of The Allegheny County Jail

Reconstruction Project Award

Building Design & Construction Magazine
Adaptive Reuse of The Allegheny County Jail

Historic Preservation Construction Project Award

Preservation Pennsylvania
Pennsylvania Historical and Museum Commission
Adaptive Reuse of The Allegheny County Jail

Preservation Award

Historic Review Commission of Pittsburgh
Adaptive Reuse of The Allegheny County Jail

Commendation

Pittsburgh History and Landmarks Foundation
Adaptive Reuse of The Allegheny County Jail

Award of Excellence

Associated Builders & Contractors, Inc.,
Keystone Chapter
Women & Babies' Hospital of Lancaster General

Finalist Design/Build

Master Builders' Association of Western PA
Quantum One

Finalist Under \$7 Million

Master Builders' Association of Western PA
The Institute - Clinic and OR-14



Adaptive Reuse of Allegheny County Jail



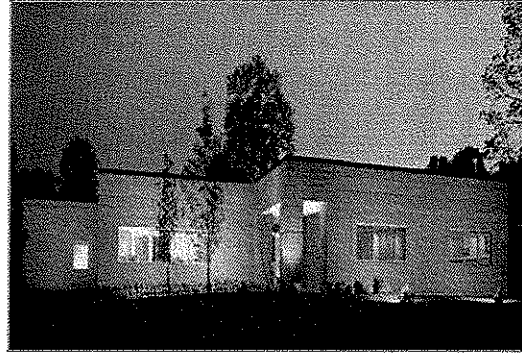
"The Little Shop," Memorial Medical Center



*International Brotherhood of Electrical Workers
Local #5 Headquarters*

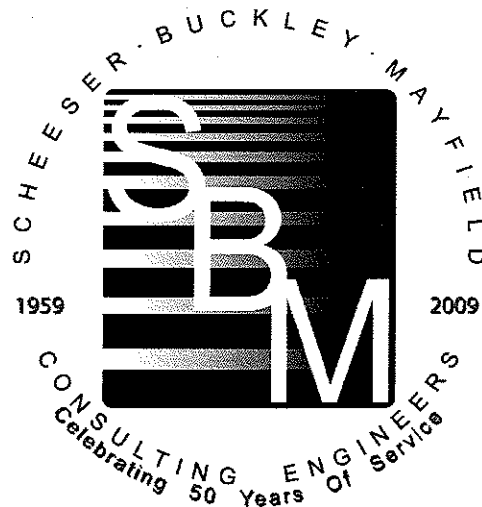
ABOUT THE FIRM

Scheeser Buckley Mayfield LLC is an Ohio-based Consulting Engineering firm that serves clients throughout Ohio and the surrounding states. The firm was established in 1959 by Walter L. Scheeser and Edwin J. Buckley, specializing in the design of mechanical systems for the construction industry. The firm has enjoyed a steady growth in clients and geographical area served throughout its history, and its services now include electrical, civil, and telecommunication design.



Scheeser Buckley Mayfield LLC has developed an outstanding reputation for both its accessibility to its clients and the clarity and completeness of its documents. The firm has been a leader in the application of new technology. It has extensive experience in the design and analysis of projects of all sizes, which it can draw upon for future projects. Each project requires an analysis of the most cost effective system available based on the client's design parameters. It is also the responsibility of the design team to determine if other options exist which may be beyond the scope of the current budget and which need to be considered on the current project to allow for future growth. Scheeser Buckley Mayfield LLC gives this personal attention to each project by determining the project design which can be implemented within the client's budget while applying innovative design concepts.

Many of SBM's projects originate from clients who have used its services previously and wish to continue a professional association. Scheeser Buckley Mayfield LLC strives to provide very professional and competent engineering services to all of our clients and to develop a personal relationship with these clients. This on-going association with clients for them to better understand design concepts as well as the logic behind the decisions which may affect their systems for many years after the project's completion.





Allegheny Design Services

Structural Engineering

102 Leeway Street
Morgantown, WV 26505
Phone: (304)599-0771
Fax: (304)599-0772
E-mail: Dave@AlleghenyDesign.com
Web: www.AlleghenyDesign.com

FIRM PROFILE

Allegheny Design Services is a consulting engineering firm specializing in structural building design and building analysis.

Dedicated to serving West Virginia and the surrounding region, ADS recognizes the need for reliable and full service structural engineering support. ADS provides all phases necessary for the successful completion of a building project including schematic design studies, design development, construction documents and specifications, and construction administration. We currently hold licenses in West Virginia, Virginia, Maryland, Pennsylvania, and District of Columbia.

ADS's experience exceeds twenty-five years in the Design and Project Management of:

- Commercial Facilities
- Industrial Facilities
- Institutional Facilities
- Educational Facilities

ADS was established by David Simpson, P.E., MBA, in 2002 as a result of a need in North Central West Virginia for reliable structural engineering services. ADS utilizes a combination of office technology and a motivated staff to deliver projects typically up to \$25 million in construction value. We have completed design work for over \$150 million in construction since our inception. Our clients include architects, contractors, developers, attorneys, and insurance companies.

Building systems delivered by ADS include structural steel, reinforced concrete, precast concrete, and structural timber. ADS currently utilizes the latest engineering design and drafting software for the development of project work.

ADS is covered under a \$1 million liability policy for errors and omissions through Beazley Insurance Company.



Floyd Browne Group

Firm Overview

Floyd Browne Group is a design and engineering firm focused on the success of our clients. We seek to provide the best total solution to our clients: solutions that are successful, economically viable, marketable, regulatory-compliant, and in harmony with their environment. No matter where our clients' projects are located, we work to understand their latest developments, trends, regulatory issues, concerns, drivers, challenges and success factors.

It is our business to meet the needs of –

Government Clients

- Community infrastructure design and engineering
- Transportation
- Water treatment, distribution and storage
- Wastewater treatment and collection
- Stormwater management
- Regulatory compliance
- Facility management and operations
- GIS
- Financing
- Construction administration

Land Development Clients

- Planning
- Zoning
- Construction design and engineering
- Platting
- Site enhancements and amenities
- Site utilities
- Transportation and access management
- Environmental studies
- Regulatory approvals
- Landscape architecture
- Survey and construction staking

Parks, Trails and Greenways Clients

- Trail and greenway planning
- Master planning
- Design and engineering for community open space and natural areas
- Parks
- Trails
- Ecological restoration
- Public spaces
- Historic sites
- Streetscapes

Institutional Clients

- Master planning
- Design and engineering for campuses, health care, and other institutional facilities
- Site utilities
- Infrastructure design
- Site development

Industrial Clients

- Infrastructure design and engineering
- Water
- Wastewater
- Stormwater management
- Roads, parking and docks
- Regulatory compliance
- Facility operations assistance
- Environmental investigations and remediation
- Facility closures, permitting, modeling, environmental compliance assistance

Environmental Professional Services

- Site assessments
- Permitting
- Stream and wetlands delineations and mitigation
- Environmental studies;
- Environmental recovery
- End use planning
- Brownfields revitalization

Survey Professional Services

- GPS
- Utility mapping
- Boundary
- Right of way
- Topographic
- ALTA
- Platting



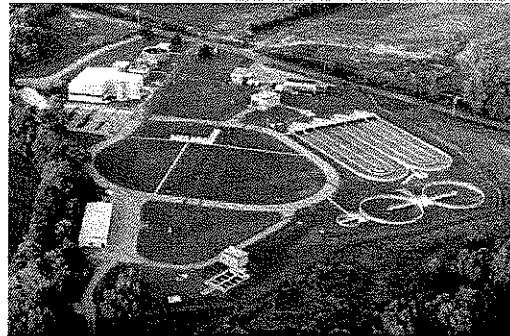
1-800-325-7647

www.floydbrowne.com

OFFICE LOCATIONS:

United States:
Akron, Ohio
Columbus, Ohio
Delaware, Ohio
Charleston, West Virginia

Russia:
Moscow
Kaliningrad





**Floyd
Browne**
Group

Who We Are

Floyd Browne Group is a design and engineering firm with more than 100 professionals focused on providing solutions for our clients. Our firm is committed to consistent, superior execution of Market Partnership.

Professionals – Our firm encompasses

- 25 licensed Professional Engineers
 - 10 Landscape Architects which include LEED™ accredited professionals who have focused their careers paths following sustainable design ethics.
 - 15 Surveyors
 - Numerous other Specialists including environmental scientists, operations personnel, planners, funding specialists, and technicians.
- We have the technical skills and experience to provide comprehensive design and engineering services.

Floyd Browne staff have proven experience working together. Whether it is across geographic boundaries or technical disciplines, our professionals have worked day-in-day-out with one another. We know how to support each other and how to communicate with the client.

Our Clients – Our project managers assist clients around the globe. We provide services to:

- Local and state governments
- Commercial & residential developers
- Parks, trails & greenways organizations
- Architects
- Industry and manufacturing facilities.

Floyd Browne Group works regularly with clients, teaming partners, technical experts, vendors and suppliers throughout the United States and internationally. Our firm has long implemented sustainable design into our project approaches. We partner with our clients to evolve new ways of thinking about design solutions that add value through sustainable practices. These partnerships lead to remarkable results, both for our clients and their communities.

Office Locations

Our geographic offices are located in the United States and Eastern Europe.

United States – Akron, Columbus, Delaware, OH; Charleston, WV

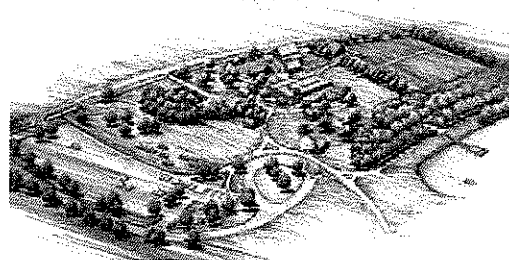
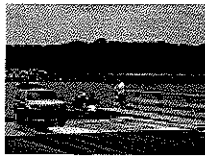
Eastern Europe – Moscow, Kaliningrad

All of our office locations are networked and staff are equipped with mobile technology to work productively from remote locations.

History

For more than 78 years, Floyd Browne Group has a steady history of commitment to the client. Over the past 9 years, our firm has added many valuable professional technical leaders through the acquisitions and mergers of Worl & Associates, Stults and Associates, Environmental Design Group, and Benatec Ohio. Floyd Browne Group continues to be committed to assembling the necessary talent and expertise needed to provide the best total “sustainable design” solutions for our clients.

Today, Floyd Browne Group is a design and engineering firm with a client base in the US and Eastern Europe. Our focus remains on public and private clients.





Consultant Qualifications

For the past 15 years, Schafer Consulting Inc. ("SCI") has worked exclusively in the fields of behavioral health, child welfare, mental retardation / developmental disabilities, and juvenile justice. The firm provides:

- Safety, incident/sentinel event and risk assessments
- Joint Commission, COA, and CARF accreditation and licensing preparation
- CMS and mental health regulations compliance
- Operations and product line assessments
- Productivity and workflow enhancement
- Quality improvement
- Feasibility studies and market research
- Strategic planning
- Turnaround management
- Acquisition, merger, and divestiture
- Behavioral health and child welfare system reform
- Care & case management organization planning in child welfare
- National, regional, and local business / referral development

Clients include states, counties, provinces, and providers. The firm has worked in 49 states and Canada. Clients include state departments of mental health and mental retardation, state child welfare agencies; county departments of human service; regional medical centers; and many private providers in these fields.

Steve Schafer

Mr. Schafer has 30 years experience in the behavioral health and human services as fields as a clinician, program director, administrator, hospital system vice president, and, since 1993, as founder and president of Schafer Consulting Inc.

He has led many projects for state and local government behavioral health and human service departments as well as for hospital system, community mental health centers, psychiatric product lines of regional medical centers, children and youth organizations, provider networks, private schools, multi-state human service systems, group practices, Indian Tribes, foundations, and associations.

He has published numerous articles related to children and youth services, mental health, managed care, social service planning, and is frequently interviewed for publications, most recently, those related to behavioral health practice management.

- Risk pool analysis and strategies for Lead Agencies managing care under Florida's child welfare privatization and global transfer of some \$587 million from the State to the lead agencies through the Florida Coalition for Children, with Milliman, Inc.
- Operations assessment for Methodist Hospitals inpatient behavioral health services in Gary, Indiana.
- Strategic plans (including feasibility and demand studies), business development for child and adolescent residential treatment centers and psychiatric inpatient units serving all age groups and populations:
 - CO: Southern Peaks Regional Treatment Center - Cornell Companies
 - IN: Gibault; Midtown MH Center – Wishard Health System; Bloomington Meadows Hospital – United Psychiatric Group*
 - PA: Mars Home for Youth; Auberle; Glade Run
 - IL: St. Johns Hospital Inpatient Psychiatric Unit
 - IN: Bloomington Meadows Hospital*
 - KS: Mt. Carmel Regional Medical Center inpatient and outpatient psychiatric services
 - SD: McCrossan Boys Ranch
 - OH: Belmont Pines Hospital and Fox Run Hospital – United Psychiatric Group*
 - NM: Mesilla Valley Hospital – United Psychiatric Group*
- Clinical and operations due diligence for JW Childs interest in acquiring a \$700 million national human service system working primarily in therapeutic foster care, host home, home health, and residential treatment for and related product lines for children, adolescents, adults and older adults in child welfare, juvenile justice, developmental disabilities, acquired brain injury and medical industries
- Statewide child welfare substitute care case rate analysis for the Arizona Dept. of Economic Security in partnership with Milliman, an international actuarial firm
- Feasibility study to expand psychiatric residential treatment for Prairie View, Inc. a private non profit behavioral health system with a free standing psychiatric hospital and residential treatment unit in central Kansas
- Feasibility study and market research for a CON for a new freestanding psychiatric hospital, residential treatment center, partial hospital and outpatient services for Universal Health Services, The Stonington Institute.
- Psychiatric product line assessment of adult and a geropsychiatric inpatient units, a Geriatric Assessment Center, Intensive Outpatient Chemical Dependency Treatment Program, Partial Hospital, and intake center for Baptist Hospital of East Tennessee in Knoxville, TN, subcontract with FTI Cambio Health Solutions, Inc.
- Turnaround management for the psychiatric inpatient services at St. John's Hospital in Springfield, IL.
- Interim management for the psychiatric inpatient and outpatient services at Mt. Carmel Regional Medical Center in Pittsburg, KS
- Integrated service system plan for a state department of mental health and substance abuse treatment (Connecticut Dept. of MH and SA services)
- Efficiency study for the Connecticut Department of Mental Retardation statewide Early Intervention program with 790 practitioners
- Productivity study for Indiana County, PA Guidance Center

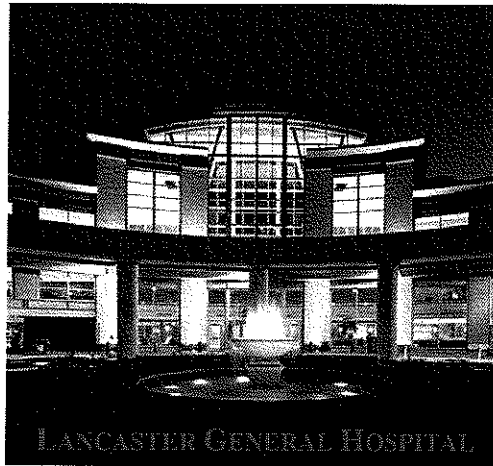
Exceeding Expectations

Firm History

PCS PROJECT AND CONSTRUCTION SERVICES, INC.

PCS, headquartered in Cleveland, OH, with branch offices in Wheeling, WV, and Phoenix, AZ, have been providing professional cost estimating services for 20 years. PCS has extensive experience providing complete estimates to Owners, Architects, and Engineers at all milestones of a project.

We offer a complete menu of stand-alone design phase services. These include **cost consulting, value engineering, scheduling, constructability reviews, bid package strategies, bidder evaluations, and building evaluations & assessments.**



PCS has developed over \$10 billion of construction project cost estimates. As an independent service, we provide in-house architectural, civil, structural, mechanical, electrical, plumbing, fire protection, and technology estimating to Owners and architectural firms nationally. Our accurate well-defined cost estimates are a critical step in successful projects and are significant when the value engineering process is undertaken because of our first-hand knowledge of all aspects of the building construction.

A lead estimator will be assigned to each project with oversight from the estimating principal. Thus, each Client benefits from personalized contact with PCS's principals and the highest level of estimating advisory and management experience. With four corporate principals, most with more than 25 years of experience, and 36 additional construction professionals, PCS maintains a very hands-on approach with every project assignment.

PCS has been fortunate to work on numerous Healthcare projects, a partial list of our clients are shown below;

- Akron General Medical Center, Akron, OH
- Alliance Hospital, Alliance, OH
- Barberton Citizen's Hospital, Barberton, OH
- Bradford Regional Medical Center, Bradford, PA
- The Cleveland Clinic Foundation, Cleveland, OH
- The Eliza Jennings Group, Cleveland, OH
- Elyria Memorial Hospital, Elyria, OH
- Good Samaritan Hospital, Cincinnati, OH
- Grant Riverside Hospital, Columbus, OH
- Heather Hill, Chardon, OH
- Lake Hospital Systems, Mentor, OH
- Lancaster General Hospital, Lancaster, PA
- Latrobe Area Hospital, Latrobe, PA
- Lutheran Medical Center, Cleveland, OH
- Marion General Hospital, Marion, IN
- Menorah Heights, Pittsburgh, PA
- Ohio Valley General Hospital, McKees Rocks, PA
- The Ohio State University Medical Center, Columbus, OH
- Oswego Hospital, Syracuse, NY

Exceeding Expectations.
Avoiding Surprises.

PCS
Project and Construction Services, Inc.

Experience - Patient Units



architecture
planning
interior design



Lakewood Psychiatric Hospital
Washington County, Pennsylvania



architecture
planning
interior design



Lakewood is a 3-story, 40 bed in-patient psychiatric hospital on a nine acre site. Part of a 110-acre campus rolling and wooded location is a beautiful rural setting in the northern part of Washington County, Pennsylvania.

At Lakewood, the building is divided into a series of volumes, planes and roofs, giving a strong village impression while still maintaining an all-important integrity of service and purpose. The project took advantage of the sloping site by creating one story partially below grade.

Our charge was to create a facility that would mirror patients' daily home environment and activities, to be as close as possible to normal living. A residential quality

and feeling is achieved through the use of gabled roofs, cedar siding, living rooms in the two 20-bed nursing units with sloping ceilings and fireplaces in the dining and lobby areas. The privately owned and operated, stand-alone facility is being constructed to fulfill much needed intermediate term acute psychiatric in-patient treatment beds, of which there is a critical shortage.



Southwood Psychiatric Hospital Residential Treatment/Inpatient Renovations

Pittsburgh, Pennsylvania

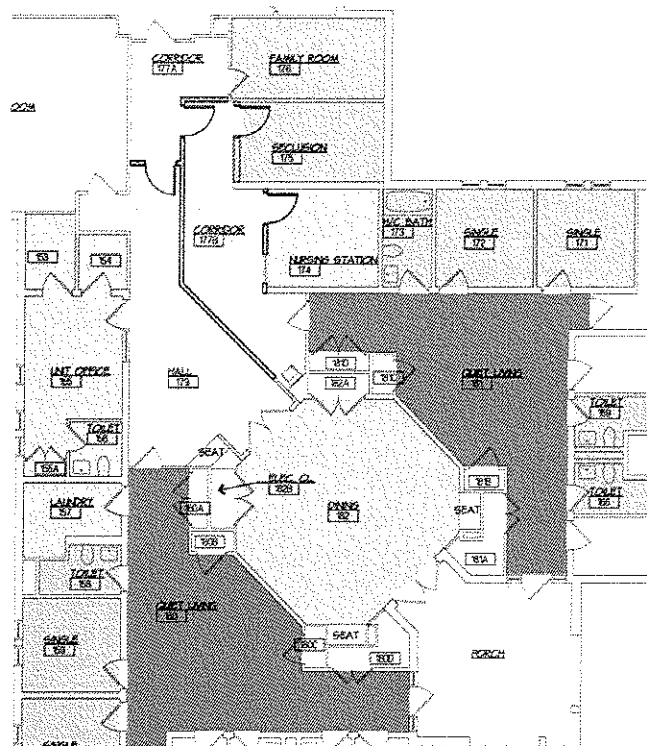


architecture
planning
interior design

The most recent project undertaken by IKM for Southwood Psychiatric Hospital involved renovation of existing inpatient psychiatric bed units to address current community needs and demand for a specific service-line. By redesigning existing space additional beds will be gained for the Sexually Maladaptive Behavior (SMB) Program that is a residential treatment program not a psychiatric nursing unit.

The major impact the design will have on the existing space is the provision of two separate and distinct units, two separate and distinct hallways, and two separate and distinct exits into the main hall. The new design will prevent any commingling of the two patient populations. This project upon completion will support the care models for two programs – SMB and Inpatient Psychiatric – in their appropriate separate spaces.

Facility users comprised of direct care workers, therapists, nurses, physicians and support staff as well as patients, residents, and families all will be better served in the two distinct new units. The result will be eliminating the current wait time for bed availability based upon demand and efficiencies gained by improved use of existing resources.



Sunnyview Nursing and Rehabilitation Complex

Butler, Pennsylvania

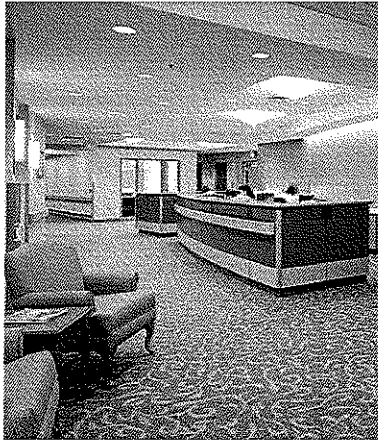


architecture
planning
interior design



IKM Incorporated was selected to provide professional design services for the renovations of Sunnyview Nursing and Rehabilitation Complex, the skilled nursing home in Butler County.

The projects undertaken at Sunnyview include the design of an Alzheimer Unit, renovations to the beauty salon, multipurpose room/chapel, creation of a rehabilitation suite, first-floor offices, and kitchen, the solarium, resident lounge, dining/activity room, nurse station and support spaces.



Lancaster General Hospital Orthopedic Center, Patient Units

Lancaster, Pennsylvania



architecture
planning
interior design

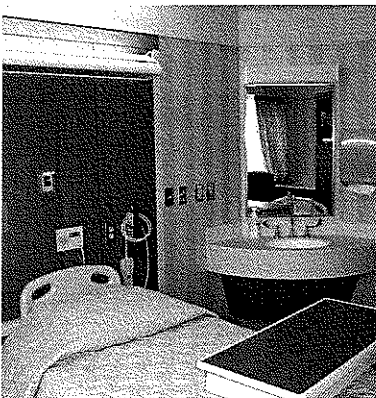


Lancaster General Hospital in Pennsylvania determined that they could improve patient care and the outcomes of their orthopedic patients if they pulled that service line into a separate, yet co-joined facility. They retained IKM to design a state of the art Orthopedic Specialty Hospital that would redefine the standard of care for the community. The project reshapes the hospital's image by creating a grander, more hospitality-like entry reflective of it's vision for healthcare and commitment to the community.

The new Fourth Floor patient units are made up of two nursing units, a 18-bed total joint unit and a 24-bed general orthopedic unit. A new dedicated physical and occupational therapy suite was developed adjacent to the joint unit as support for the "Joint Camp" approach to orthopedic patient care.

The private patient rooms have hospitality accoutrements of an inlaid wood look floor, armoire, comforter and higher end finishes. The rooms are zoned into a family/ caregiver zone, patient zone and staff zone. The family zone includes a sleep chair, independent lighting and data port. The patient rooms are laid out around the perimeter with a central nursing/support core.

Nursing care is delivered using a hybridized model. A primary team station is near the unit entry where the Unit Clerk works. Consults and dictation occur in a discreet room off of this station. Other nurse work areas are distributed through the core and interspaced with support functions

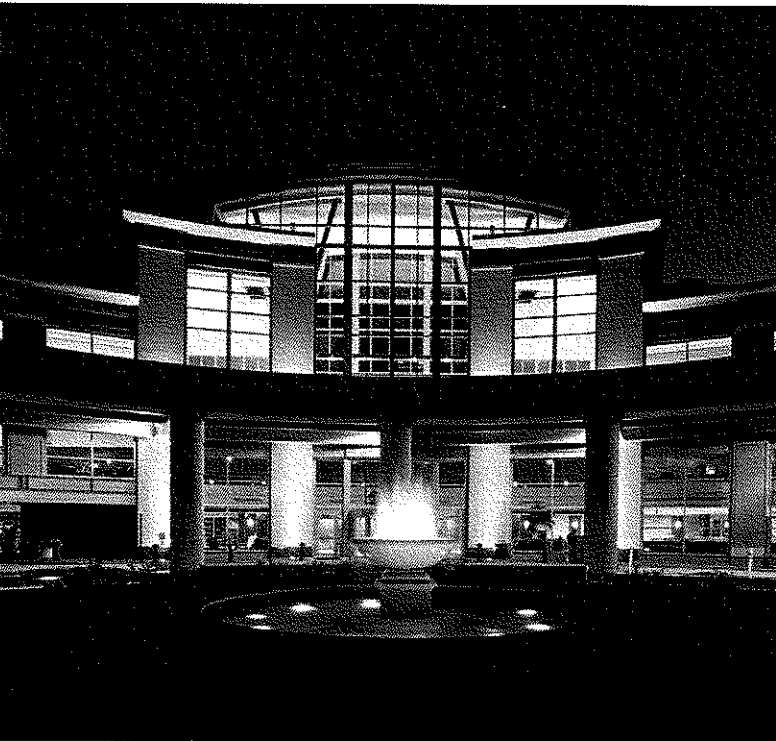


Lancaster General Hospital Orthopedic Center and New Main Entrance

Lancaster, Pennsylvania

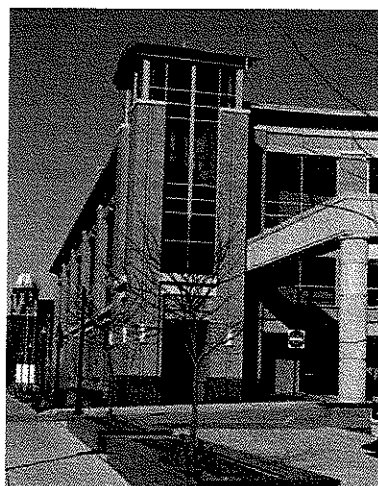


architecture
planning
interior design



The project comprises 340,000 SF of new construction including a front entry atrium, a 4-story orthopedic center, and a 5-1/2 story vertical addition to an existing building.

The new four-story building reestablishes the sidewalk boundary and garden yard for the neighborhood. The new facade includes building elements such as pre-cast spandrels and mullion treatments that are sympathetic to the scale of the neighboring row houses. The front entry retreats from the street as a concave motor court that invites both vehicles and pedestrians through an elegant walled garden approach to the building. Guests can be dropped off before proceeding to the adjacent garage or a new Valet Service is available to speed entry into the facility. The existing garage is faced screened with a new screen wall that mimics the exterior language of the Orthopedic Center and extends the new unifying architecture across the south end of the campus. New towers anchor the entry and make visual reference to



The Western Pennsylvania Hospital, T3 Orthopedic Patient Unit Pittsburgh, Pennsylvania



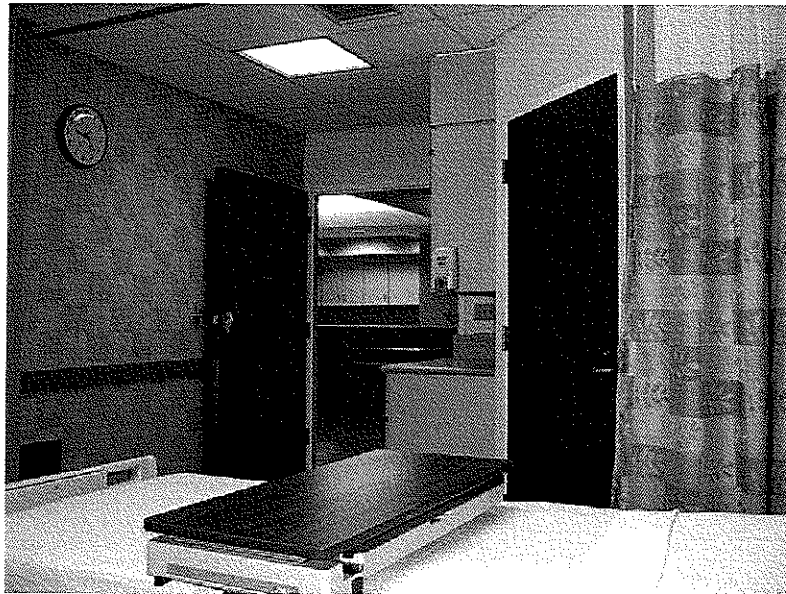
architecture
planning
interior design

The Western Pennsylvania Hospital secured the expertise of their long-standing architect, IKM Incorporated to upgrade an existing In-Patient Unit to focus on the specific needs of post-surgical orthopedic patients.

The renovation encompassed development of a large, central common area visible from the corridor to support their “joint camp” approach to joint replacement, minor therapy activities and other patient group functions. The unit’s core support area was modified by eliminating two cross corridors and one Nurses’ Station. The main Nurses’ Station was shifted to permit the design of this common area to be used for multiple purposes and to support decentralized nursing care.

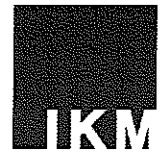
The 27-bed unit’s patient rooms and corridors received finish upgrades to impose a hospitality design expression to the former institution aesthetic. This included new flooring, wall finishes and wall protection and lighting as well as a new water closet mounted at a higher elevation in each room’s toilet room to support this patient type. ADA approved wall sconces were located beside each patient room door. The waiting room was also expanded with upgraded finishes.

Renovated as a Class III ICRA project, the HVAC, plumbing, electrical, and fire protection infrastructure were modified to accommodate the new layout.

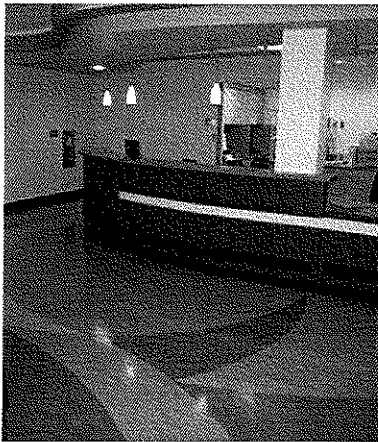
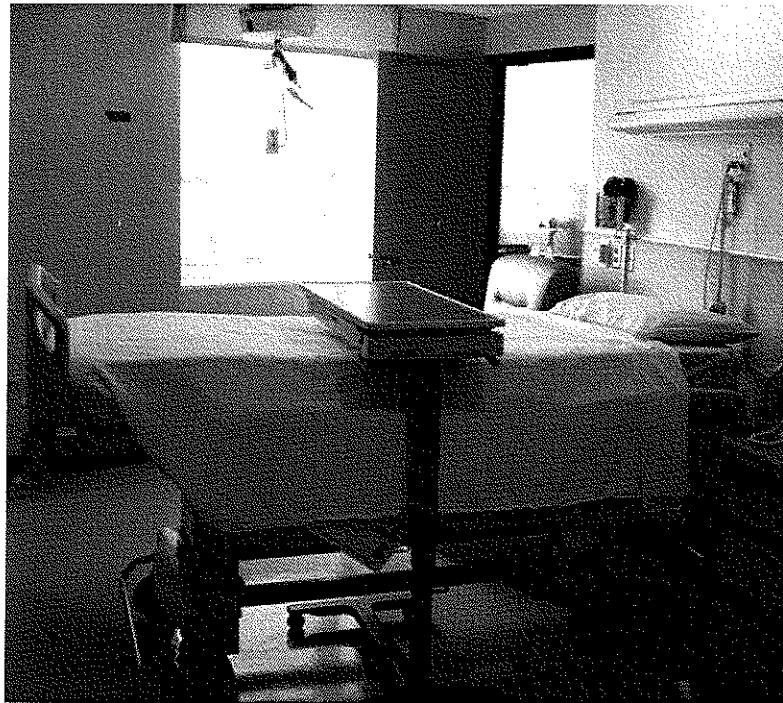


Lancaster General Hospital Inpatient Room Renovations

Lancaster, Pennsylvania



architecture
planning
interior design



Lancaster General Hospital, as part of a continuing effort to upgrade their inpatient units selected IKM to design aesthetic improvements to the 3-West and 4-West Patient Units. These projects used existing space in semi-private rooms to create the much-needed areas of family waiting and equipment storage.

With no changes in the patient bedroom footprints, the resultant 22-bed patient unit in 3-West includes 16 private patient rooms and 3 semi-private rooms. Aesthetic upgrades to the patient rooms included: new HVAC, finishes, wardrobes, televisions, bed locators, handwash sinks, lighting, and additional supplemental power outlets.

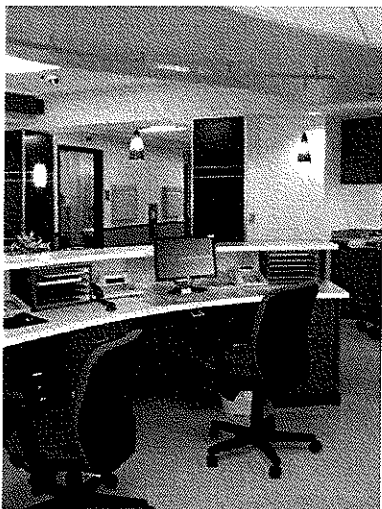
The 4-West Unit project is a conversion to a 20-bed unit with new wardrobes and room sinks

and conversion of existing space on the fourth floor to a waiting room.

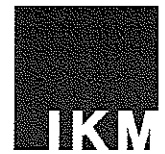
The patient toilet rooms in both units retained their plumbing fixtures and the rooms received new ceilings, wall paint, lighting, and some accessories as well as new door and hardware for the toilet rooms within the existing frames.

The corridors also received new finishes, lighting, and HVAC distribution. New patient chart holders and wall sconces were included to complete the upgrades.

The core area was renovated to provide more efficient care delivery including an ancillary Nurses Station at the end of the one corridor to move the nursing staff closer to the patient rooms.



The Western Pennsylvania Hospital 6-East Patient Rooms Pittsburgh, Pennsylvania



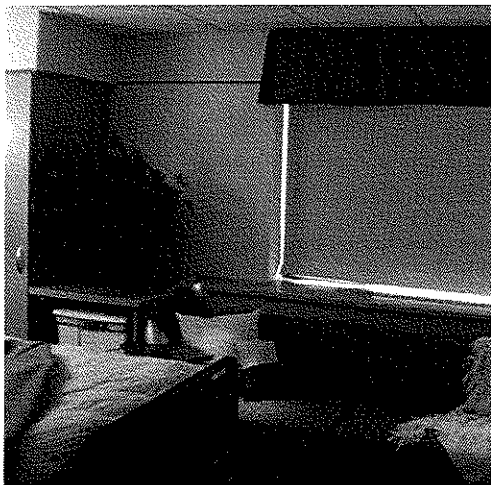
architecture
planning
interior design

In order to meet an increased demand within the Obstetric Service line, the Western Pennsylvania Hospital commissioned IKM to convert the Sixth Floor of the East Tower to a new 19-bed post partum unit. The project was designed with the intention of a three-phase construction and occupancy schedule. The existing hospital space contained a temporary 8-bed post partum unit/Level 1 nursery.

Phase one included an 8-bed unit and one 10-bassinet Level 1 nursery. The temporary unit remained operational with its nurses station, soiled utility, med room, nourishment area and Level 1 nursery. Phase 2 consisted of 11 beds and a second 10-bassinet Level 1 nursery and Phase 3 consisted of new finishes for public elevator lobby and main unit entry corridor.

The nursery component is for Level 1 newborns only. Two 10-bassinet nurseries have been developed in accordance with the requirements of the American Academy of Pediatrics. A zone of support separates the nurseries, including nurses' area and workroom. Storage is provided at each bassinet location. View windows are provided off the public corridor.

The result is a contemporary, well-appointed post partum unit with all of the appropriate support spaces designed to meet the needs of the healthcare professional as well as the patients they serve.

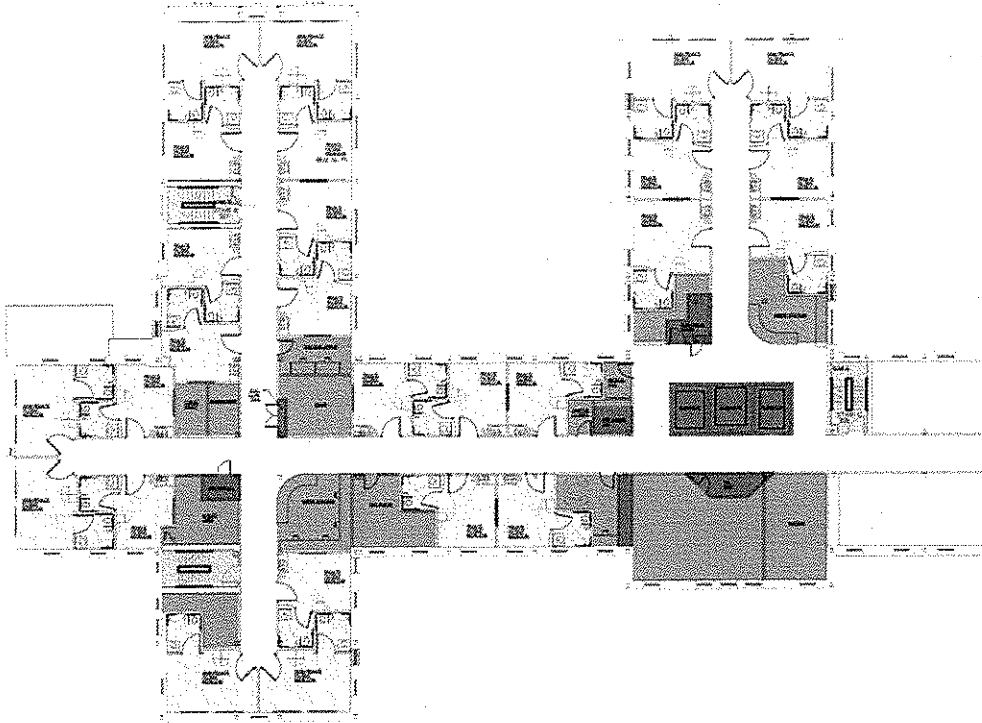


VA Medical Center Clarksburg Patient Unit Renovation/Relocation

Clarksburg, West Virginia



architecture
planning
interior design



Under an open-end contract IKM was retained by the VA Clarksburg to renovate 15,000 gsf of space on the third floor. The space will accommodate the med/surge nursing unit and related functions from the fourth floor. The unit will be conveniently located adjacent to surgery, the post anesthesia care unit, intensive care unit and same day surgery.

The renovation will eliminate the double and triple occupancy patient rooms to provide 30-34 single-bed patient rooms consistent with current healthcare planning and

design strategies. The private rooms will provide a patient-focused environment that will allow for improved healthcare delivery. The room layout and design will include space that enables both staff and family to fully participate in the care of the patient. A full-scale room mock up is planned in the Clarksburg facility to allow staff to experience the space and participate in placement of care-delivery related items.

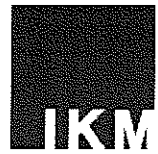
The renovation requires replacing HVAC systems with dedicated systems of current technology. The

new equipment combined with window repairs/replacement is expected to reduce the overall demand for energy from this unit thus continuing the Clarksburg VAMC's effort to comply with the Executive Directive to reduce energy consumption by 3% per year over the next 5 years within the VHA.

This unit will be the first to incorporate the MRSA "Getting to Zero Initiative" in planning and construction stages.

Washington County Health Center Renovations

Washington, Pennsylvania



architecture
planning
interior design



In order to better serve the residents, as well as the community, the Washington County Health Center selected IKM Incorporated to provide architectural design services for a series of renovations, upgrades and additions to the current, twenty-five year old facility.

Two wings of the six-wing unit were renovated to house a 38-bed secured unit for patients with Alzheimer's disease and other types of dementia. The new unit has a warm and inviting look, the nurse station is more open and oversees communal space. This unit allows residents the opportunity to circulate safely.

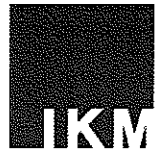


The projects under this ongoing services contract will include: renovation and remodeling of the existing nursing stations; complete interior finish upgrades; renovation, remodeling and expansion of the resident care units; the addition of new dining and recreation areas; and development of a master facility plan and sited plan.

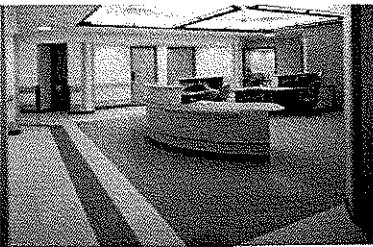
Additionally, the center's snack bar was moved to the first floor next to the front entrance. The new location makes the amenity more convenient for visitors, staff and residents.

Delaware Valley Veterans' Home

Philadelphia, Pennsylvania



architecture
planning
interior design



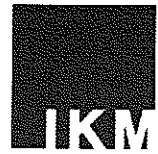
The Delaware Valley Veterans' Home is a Department of General Services project that is a 108,000-sf extended care facility located in Northeast Philadelphia on a previously undeveloped thirty-acre site adjacent to Benjamin Rush State Park. The Veterans' Home provides 170 beds distributed between Skilled Nursing Care, Personal Care and Dementia Units.

The design team provided all patient rooms with bay windows opening onto views of the park. Shared amenities such as the barbershop and the library are grouped together along the main corridor where it widens to

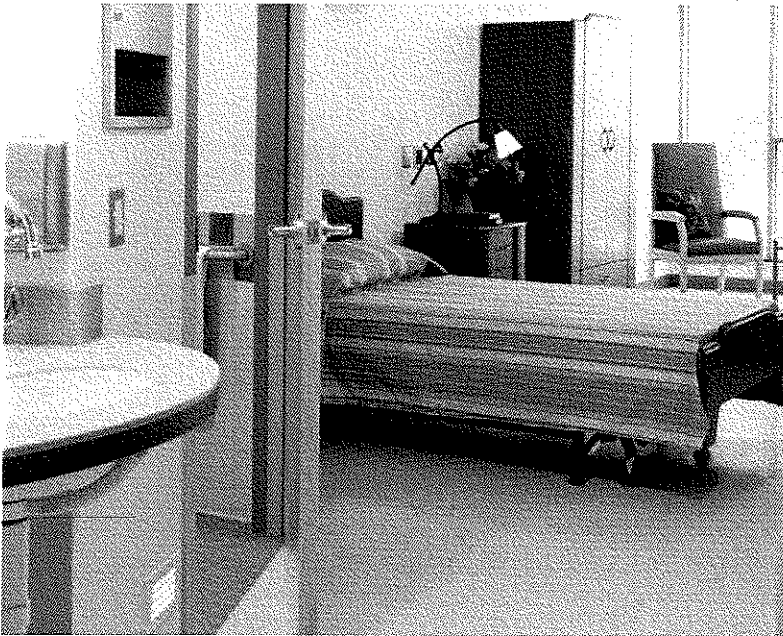
accommodate seating. The seating and corridor emulate the character of a public plaza and a street, providing a place for social interaction located near the main entry. In addition the facility offers dining services from a full service state-of-the-art kitchen using the latest technology for meal preparation and serving, spaces for recreation and social activities, an administrative suite and service facilities including a garage for maintenance of DMVA vehicles.

IKM/GBQC (Joint Venture) met the challenge posed by the Federal Veterans' Administration funding arrangement to design,

Delaware Valley Veterans' Home Alzheimer's Unit *Philadelphia, Pennsylvania*



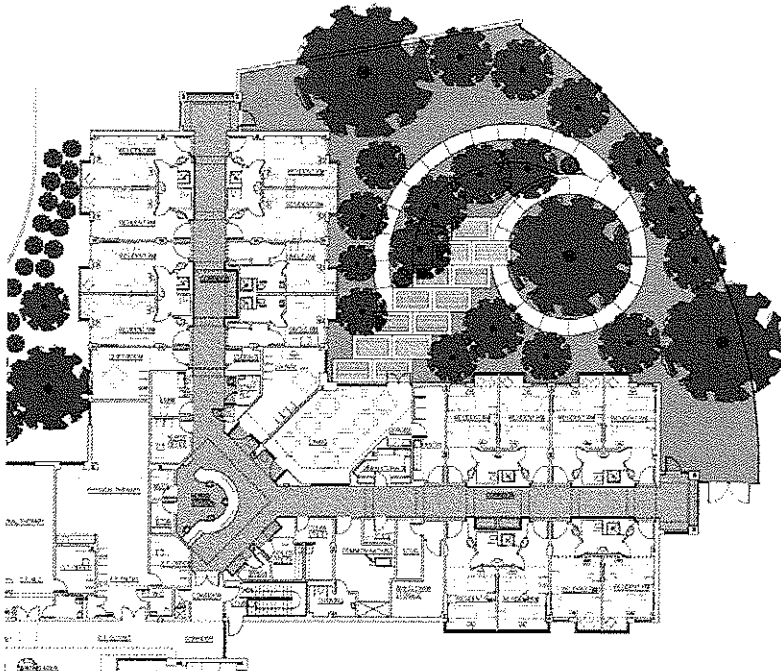
architecture
planning
interior design



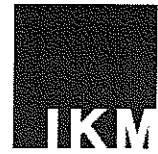
A 30-bed Alzheimer's Unit was designed as part of the Delaware Valley Veterans' Home. Fashioned to create a neighborhood feeling with multiple opportunities for resident interaction, the well-organized floor layouts encourage residents to congregate. Alcove entrances create 'mini-neighborhoods' joining units into quads. Single and double units are available.

The successful design provides a neighborhood-like environment emulating the character of a public plaza and street. Different sections of the facility are color coded to distinguish locations within the building and to assist in wayfinding. The design also provides reference points and encourages independence through visual cues that foster a connection between past and present. Indoor and outdoor spaces offer opportunities for personal, semi-public and public activities.

The goal of the environment is to complement care planning by enhancing quality of life, maintaining human dignity, and enabling residents to be comfortable and safe while finding pleasure within the limits of their abilities.



Southwestern Pennsylvania Veterans' Center
Pittsburgh, Pennsylvania



architecture
planning
interior design



The new Veterans' Center is designed to provide housing and nursing care in the best possible supportive environment for over 200 veteran residents. The spatial arrangement of the environment for the residents provides 160 skilled or intermediate nursing care beds in four nursing care units, 44 beds in dementia units, 28 domiciliary care beds and 4 day care beds.

The building is composed of two major wings of 3 and 4 stories arranged about a landscaped "courtyard commons," for outdoor activities.

The approximate 10.5-acre site was planned to make best use of functional, ecological and economical issues. The building is configured to work with the site to minimize disruption of the woodland setting and

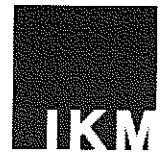
maximize the veteran residents' opportunity to have a fulfilling quality of life.

The variety of pleasing and stimulating outdoor spaces near and around the building will enable the veteran residents choices in outside activities. The project was awarded by the Department of General Services

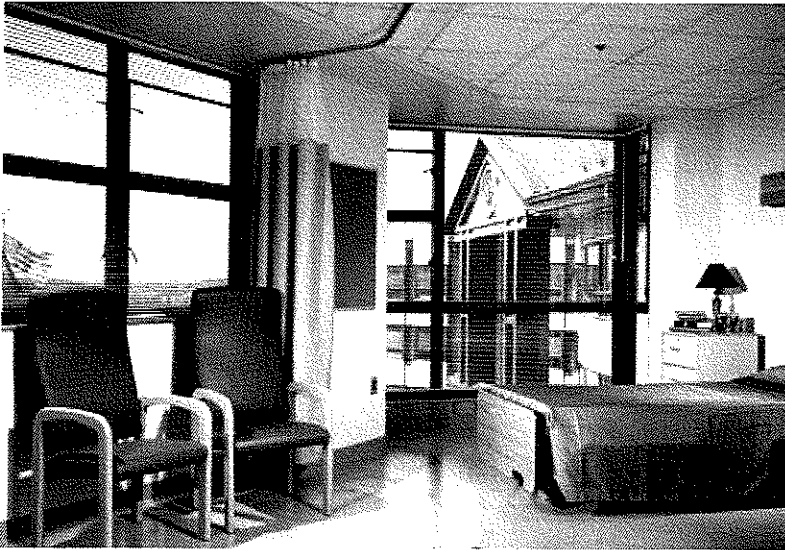


Southwestern Pennsylvania Veterans' Home Alzheimer's Unit

Pittsburgh, Pennsylvania



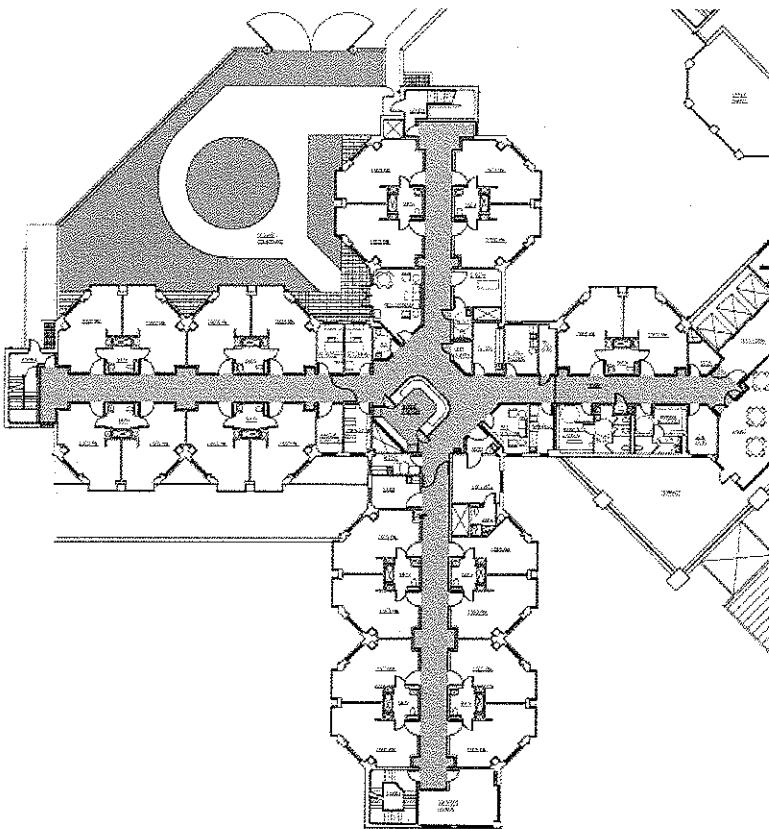
architecture
planning
interior design



As part of the overall project, IKM designed a 44-bed Alzheimer's Unit located on the second floor of the facility. The unit is designed to fully maximize the safety and security of the residents and includes a locked lounge entrance, dedicated dietary space and a separate fenced garden area for outdoor activities.

Conceptually, the environment is designed to complement care planning by enhancing quality of life, maintaining human dignity, and enabling residents to be comfortable and safe while finding pleasure within the limits of their abilities.

The successful design provides a homelike environment including indoor and outdoor spaces for personal, semi-public and public activities. The design also provides reference points and encourages independence through visual cues to foster a connection between past and present.



Experience - Food Service/Dining



architecture
planning
interior design



The Western Pennsylvania Hospital Cafeteria *Pittsburgh, Pennsylvania*



architecture
planning
interior design

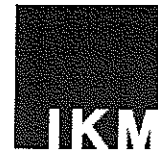
The challenge posed to the IKM design team for the renovation of the Western Pennsylvania Hospital cafeteria was to upgrade the 7,800 square foot facility with a very limited budget. Additional constraints included maintaining the existing footprint, servery, and ceiling height, as well as allowing continuous operation of the facility throughout construction.

The 230-seat employee/visitor dining room and the 215 seats in six adjacent breakout/ancillary dining and meeting rooms were energized with the addition of colored seating and a series of festive banners draped between light fixtures from the ceiling grid with velcro attachments. The banners were developed as three sets of varying color intensity that are changed each season.

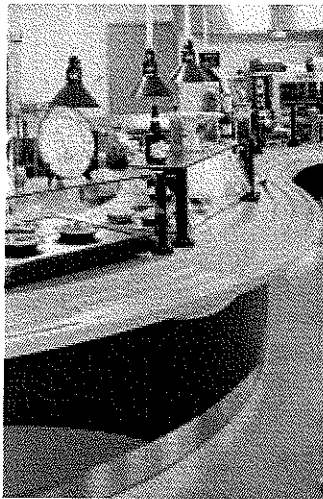
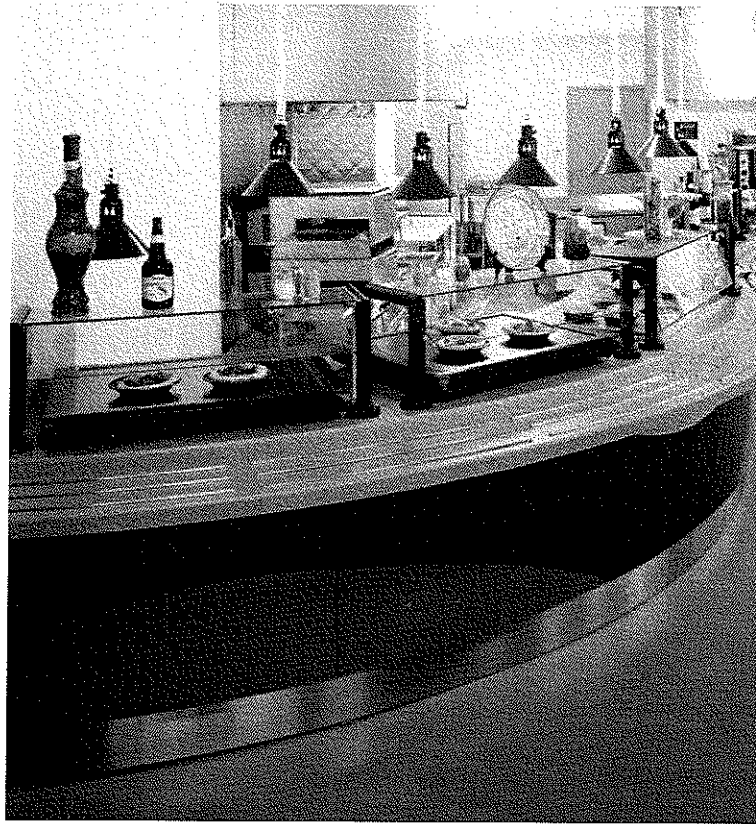
Traffic patterns were re-defined with carpeting and partial wall dividers with planters. New finishes were used throughout the space to accentuate the colors introduced in the seating and banners. Visual interest was added by incorporating a subtle pattern in the floor tiles as well as utilizing wall sconces. Seating flexibility is provided by square, four-seat tables that can be grouped or set individually, and acoustic panel dividing partitions were added in the meeting rooms. Overall, IKM successfully met the challenges of the renovation project.



Mather Pavilion Servery and Cafe, University Hospitals of Cleveland
Cleveland, Ohio



architecture
planning
interior design



IKM Incorporated was commissioned to provide architectural design services for a café and servery renovation for the University Hospitals of Cleveland's Mather Pavilion. The scope of work entailed architecture, interior design and furniture layout as well as upgrades to the mechanical and electrical systems to support new food service equipment.

Saturated colors and contemporary materials were used to update the look of this visitor dining space. Use of fixtures made of a combination of laminate, metal and glass keep pace with today's design while

remaining ever conscious of the client's limited budget. Flexible, moveable seating allows for a variety of layouts to meet the needs of the space. Fun lighting and interesting accessories add to the visual merchandising success of this space and a creative use of flooring material heightens the visual interest.

The result is a fifty-seat café with updated material finishes and lighting to provide a clean, contemporary look. The light, openness of the space makes it appear larger than it actually is and takes advantage of a wall of windows with a pleasant view.

Crossroads Café at Conemaugh Health System Johnstown, Pennsylvania



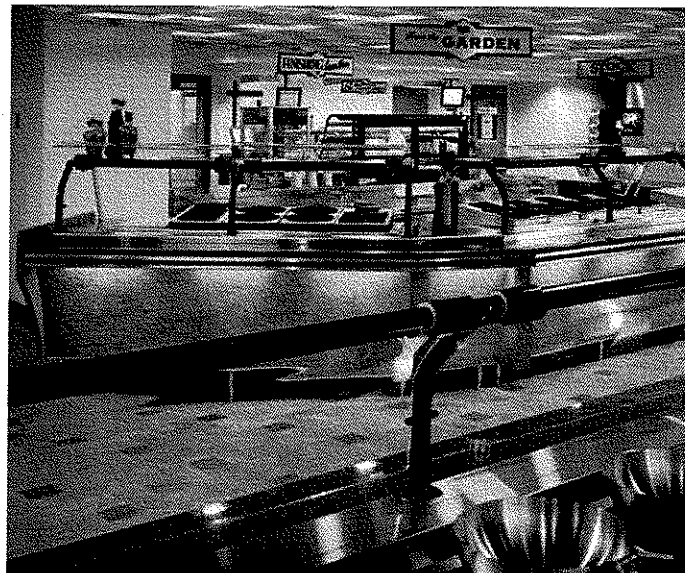
architecture
planning
interior design

From the beginning of the design process the dining facility was conceived to be a flagship operation for Conemaugh, which is the region's largest healthcare provider. Crossroads Café is now the sole facility serving the 565-bed, 10-building Conemaugh Health System in Johnstown, PA.



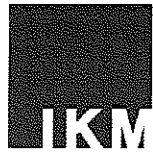
Display cooking equipment and supplies, prep tables, refrigerated cases, hot and cold wells and a touch-screen, computer-based menu ordering system have been installed in this medical center's new dining facility to ensure quick service and high food quality. A new servery, an adjacent dining room and European street-style shops have created an oasis for employees and visitors at the medical center's campus. The new facilities were positioned in a building that had been constructed to join two hospitals merged into the health system a few years ago.

The servery features eight food-concept stations as well as snack merchandising units and refrigerated display cases for beverages and to-go sandwiches and salads. The layout of the stations was determined by the position of the dining facility on the second floor, sandwiched between the emergency room below and an operating room above.

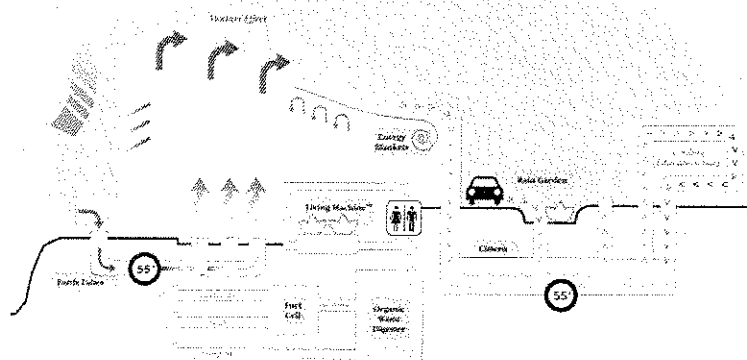


The colors and geometric shapes of the interior design in the servery, dining area and adjacent shops' corridor were selected to create a colorful and pleasantly energized environment in a light, refreshing space.

Experience - Efficiency, Energy Consumption



architecture
planning
interior design



Demonstrated Experience in LEED Certified Building Design



architecture
planning
interior design



We have several LEED® accredited professionals on the core team and a demonstrated commitment to sustainable design principles. We are committed to making our projects environmentally sensitive, energy efficient, sustainable and healthy to occupy. We have projects that have been awarded LEED® certification by the US Green Building Council and many being designed according to LEED® standards.

It is important to note that our work incorporating these principles precedes the LEED® Rating System and reflects our commitment to sustainability. In addition, our engineering consultants offer LEED® Accredited professionals on staff and offer additional projects seeking LEED® Certification. We are well versed in the process.

University of Pittsburgh Mascaro Sustainable Initiative Pittsburgh, PA

Renovation of existing space utilizing sustainable concepts; Client elected not to pursue LEED® certification

University of Pittsburgh, McGowan Institute for Regenerative Medicine, Pittsburgh, PA

Research facility for artificial organ development
LEED® Gold Rating

Lock Haven University Health Services Building

Clearfield, PA
Design of new university classroom/administration building. Seeking **LEED® Certification**

Phipps Conservatory and Botanical Gardens, Pittsburgh, PA

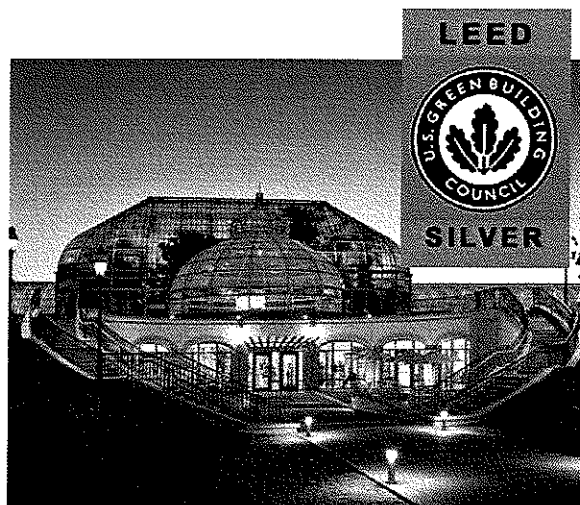
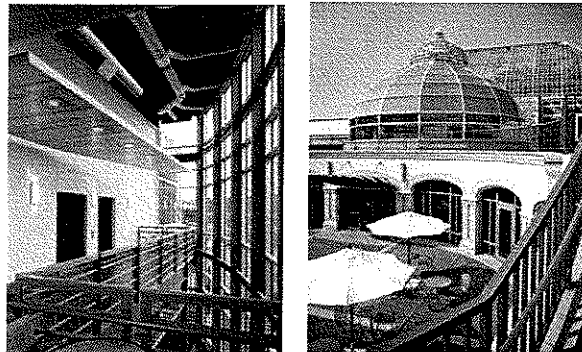
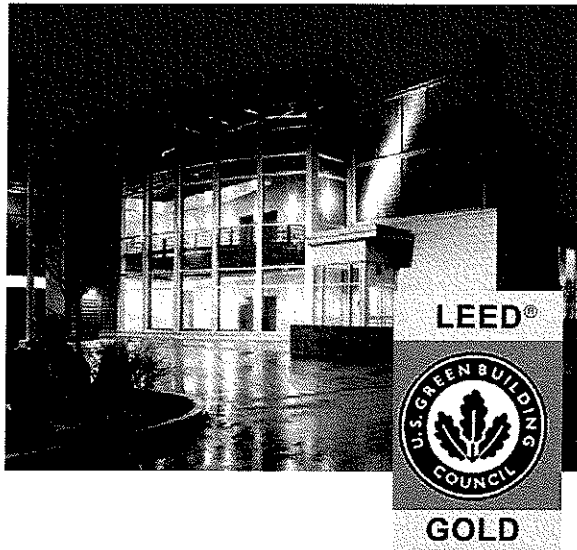
Renovation and additions to Phipps Conservatory received **LEED® SILVER Rating**

Carnegie Science Center, Pittsburgh, PA

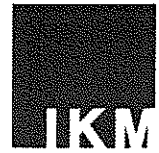
Technical Consultant to international design firm for a replacement facility seeking a **LEED® Silver Rating**

Westinghouse New Corporate Headquarters

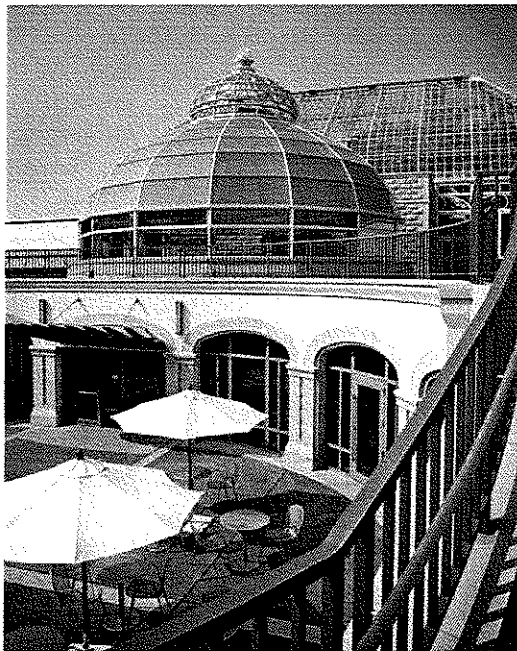
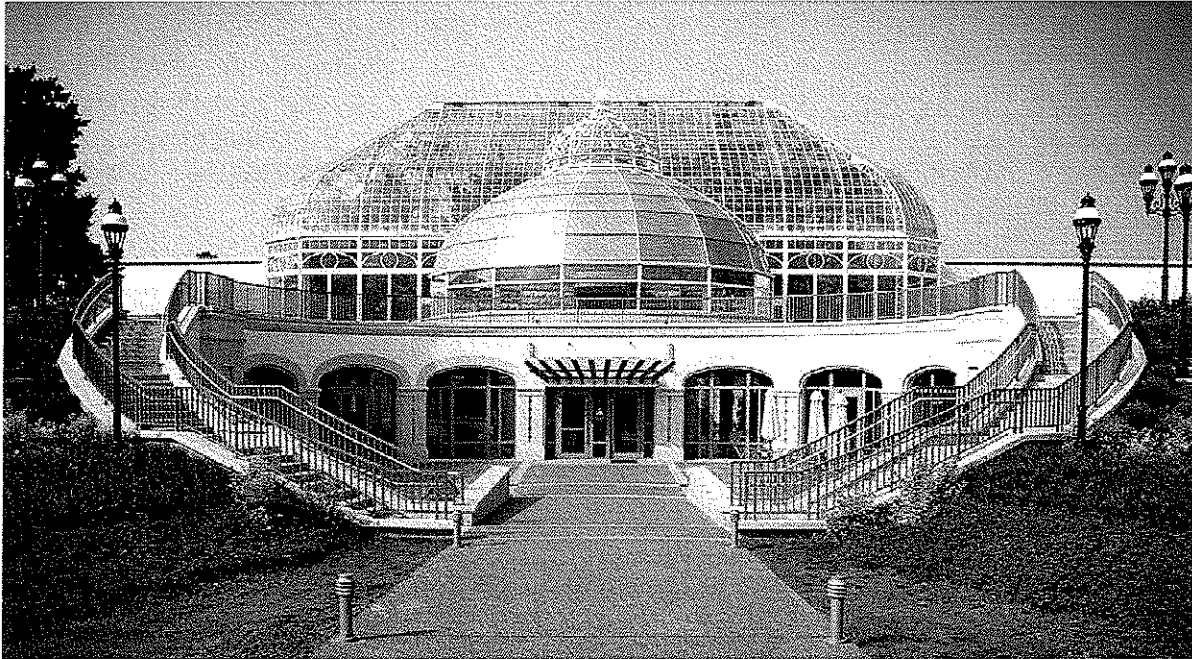
Cranberry Township, PA
Seeking **LEED® Certification**



Phipps Conservatory and Botanical Gardens Welcome Center
Pittsburgh, Pennsylvania



architecture
planning
interior design



Phipps Conservatory commissioned IKM to design major new additions to its historic 1893 glass house.

The first phase of the project includes a new "Welcome Center" at Phipps historical 'front door' in Schenley Park. The new visitor center includes a café, gift shop and dramatic double height entry space.

The project has been created using green design principles and has achieved a LEED^(R) SILVER rating from the US Green Building Council.

The fritted glass dome above the central atrium provides natural illumination for the space below. In addition, automatically controlled venting in the dome provides passive cooling for the upper floor of

**University of Pittsburgh 11th Floor Benedum Hall,
Mascaro Sustainable Initiative Office Renovation**
Pittsburgh, Pennsylvania



architecture
planning
interior design



The Mascaro Sustainable Initiative (MSI) at the University of Pittsburgh exists to promote research into green construction and sustainable water use. As part of the University's Engineering Department a recent grant and resulting influx of student researchers created a need for usable space. Conference/meeting space, a better office layout, and a décor upgrade that would pull its offices out of the 1970s and into the new millennium called for interior design details that would communicate the department's "high-tech" message.

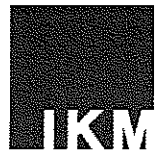
IKM teamed with Mascaro, the project's benefactor and contractor for the work, to develop a layout on the 11th Floor of Benedum Hall that suited the needs of MSI's mission, including the use of natural lighting

and sustainable materials. A better layout and decor that features contemporary furniture and a dramatic accent wall, plenty of natural lighting and the use of sustainable materials transformed the office into a place that's a magnet for collaboration.

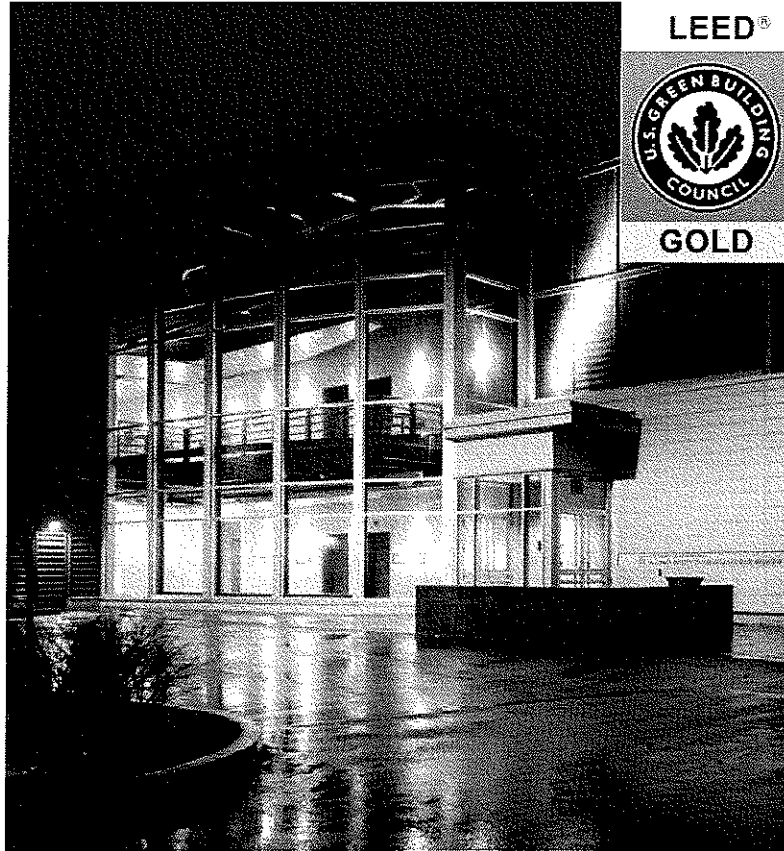
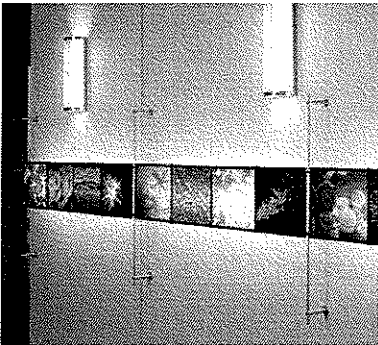
The layout provides a conference room for large-size meetings, a work area for graduate students that encourages interaction, and a kitchen area to serve the students and staff.

Sustainable design features include low-VOC (volatile organic compound) paints and a custom-designed reception desk made of formaldehyde-free plywood, art glass, and recycled brushed pewter aluminum. Workstations are made

University of Pittsburgh McGowan Institute for Regenerative Medicine
Pittsburgh, Pennsylvania



architecture
planning
interior design



The McGowan Institute for Regenerative Medicine is a 45,200 square foot, two-story research laboratory in the Southside Works, a mixed-use, riverside development in the City of Pittsburgh. The site is a former brownfield that was once occupied by a sprawling steel mill. The new building is home to scientists, researchers and other staff who are developing artificial organs and blood substitutes. The program includes animal holding, surgery rooms, research labs, two MRI rooms, a shop, graduate student spaces and offices.

Perhaps unique for a LEED™ project, the McGowan Institute was designed and built in two distinct phases. The building was originally planned as a speculative laboratory/

office or "incubator" building for the Urban Redevelopment Authority. The second phase involved design and build-out for the University of Pittsburgh's McGowan Institute. The planning and design for the fit-out project was "green" from the beginning with the objective of achieving a LEED™ Gold rating.

The McGowan Institute project is notable for several reasons:

- As of May 2005, the McGowan project is one of only two laboratories certified at the Gold Level in the US.
- It demonstrates the successful "greening" of a pre-existing, speculative "shell" building.

- It incorporates a large volume of regional and recycled materials.
- The building captures rainwater from the roof, stores it in a 5,000-gallon underground tank and re-uses the water for toilet flushing and drip irrigation.
- State-of-the-art heat recovery wheels reduce energy use by more than 30%.
- Finally, the McGowan Institute has been integrated with the teaching mission of the University of Pittsburgh. The building is regularly used as a case study of applied sustainable design principles, and it is a popular destination for visiting delegations from around the world.

Experience - Selected Healthcare Projects



architecture
planning
interior design



Selected Healthcare Experience



architecture
planning
interior design

ALLEGHENY GENERAL HOSPITAL

Pittsburgh, Pennsylvania

As the architects of record, we provide planning, architectural and interior design services. Our work for this institution includes:

Master Planning/Land Use Studies: Five-, Ten- and Twenty-Year Institutional Master Plan, NorthSide Campus Master Facility and Master Site Plans, Ohio Township

North Hills Master Plan and Replacement Hospital: Design of a 2 million square foot healthcare complex, to accommodate nearly 10,000 persons. The project program called for a new replacement hospital, ambulatory care center, professional office building administrative office building, visitor's center, academic center, research laboratories, parking facilities and necessary vehicular and pedestrian circulation systems.

Northwest Wing Emergency Department: expansion included a new 24,800 s.f. second floor housing the new Emergency Department, a new 24,800 s.f. third floor of the relocated and expanded TICU, and an 8,100 s.f. fourth floor penthouse to house mechanical equipment.

Allegheny General Hospital Comprehensive Cancer Center: four story Freestanding cancer treatment center with hospitality-driven care.

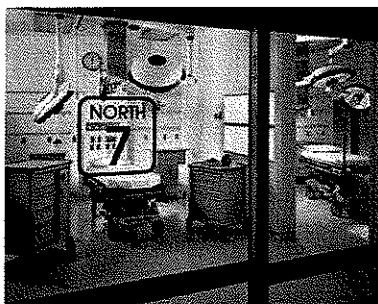
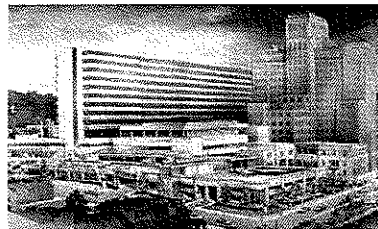
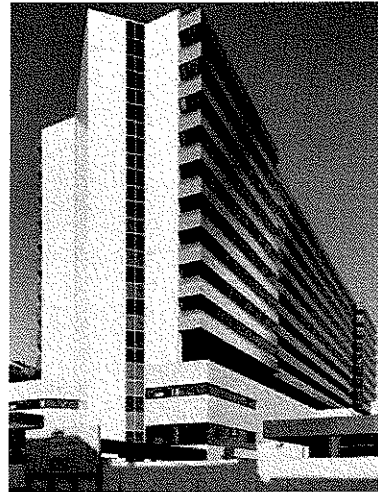
AGH Minimally Invasive Surgery Suite (MISS): Architectural design of a minimally invasive surgery suite (MISS), this operating room in conjunction with adjacent computer and audiovisual facilities was designed to facilitate the training of surgeons in the latest, high-tech robotic surgery methods.

East Wing Renovations: An entire five-level building was gutted and renovated to house a new surgi-center, ophthalmology clinic, dental clinic and over 30 physicians and their practices.

Allegheny Neuropsychiatric Institute: Complete renovation of the former West Allegheny General Hospital to house the Institute which provides rehabilitative inpatient care for impaired patients experiencing behavioral or emotional disorders related to a head injury, cerebrovascular disease or other neurological illness.

Interior renovation of 120,000 SF of office space for this Hospital departments and affiliated physicians.

Research/Professional Office Complex/Parking Garage
State-of-the-art Education and Conference Center including a



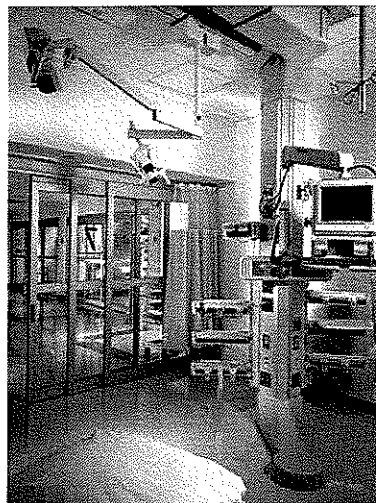
Selected Healthcare Experience



architecture
planning
interior design

Nitrogen Tank
Nuclear Cardiology
Nurse Alumni
Nursery and ICU Nursery
Nursing Education
OB/GYN
Oncology
Ophthalmology Research
Orthopedic Clinics
Pain Clinic
Pastoral Care
Patient Lounges
Patient Room Standards
Pediatric Clinic
Pediatric ICU
Pediatric Nursing Unit
Pediatric Recovery
Physicians' Offices
Plastic Surgery
Pneumatic Tubes
Psychiatric Unit
QA/UR
Radiation Oncology
Radiology Administration
Renal
Renal Satellite
Research Laboratories
Risk Management
Rodent Facilities
Satellite Dish Replacement

Seclusion Room
Security Fire Alarm
Seminar Room
Short Procedures
Signage
Site Work
Skull Base Lab
Sleep Lab
Smoking Tents/Alcove
Special Procedures OR
Spina Bifida Program
Staff Dining
Stroke Unit
Surgery & Operating Rooms
Surgery Outpatient Clinic
Telecom/Data
Telecommunications
Teleconferencing Room
Tissue Typing Lab
Total Living Center
Transplant Services
Trauma Intensive Care Unit
Trauma/Emergency Training
Travel Office
Vascular Medicine/Biology Lab
Vacuum Pump
Visiting Nurses
Water Tank
Window Replacement
X-Ray Diffraction Lab



ALIQUPPA HOSPITAL

Aliquippa, Pennsylvania

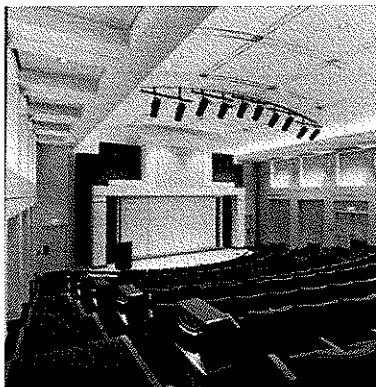
Interior Design Standards
Isolation Room
Obstetric Unit
Skilled Nursing Unit
Medical/Surgical Units

CANONSBURG GENERAL HOSPITAL

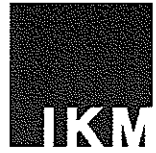
Canonsburg, Pennsylvania

Master Facility Plan: Partnering with the Hospital, IKM assisted in establishing the goals and objectives of the Facilities Plan. Goals identified included establishing a competitive assessment tool, optimum space allocations, future flexibility, operation efficiencies supported by facilities, and identification of short and long term capital requirements.

Emergency Department: an addition to the Canonsburg General Hospital to expand their emergency services to accommodate 23,000 patient visits.



Selected Healthcare Experience



architecture
planning
interior design

CHILDREN'S HOSPITAL OF PITTSBURGH

Pittsburgh, Pennsylvania

Children's Hospital of Pittsburgh, Task Order Work
Pittsburgh, Pennsylvania

IKM was selected by Children's Hospital to complete hospital renovation projects in their existing facility on an as needed basis. Current projects have construction costs from \$150 thousand and up, they include:

Minimally Invasive Operating Room— renovation of existing sixth floor Surgery Department to accommodate a new minimally invasive operating room and support spaces.

Cardiac Intensive Care Unit – study to renovate existing hospital space to expand the pediatric cardiac intensive care unit by four rooms able to be served by existing support space. The design incorporates efficient workflow patterns and meeting current code requirements.

Outpatient Orthopedics – renovation of existing hospital space on the first and third floors to improve function and finishes. This project relocated the Hospital's outpatient orthopedics unit so that it could share radiology equipment with the Emergency Department and help better support the Emergency Department.

Pediatric Sleep Disorder Study Center – adaptive reuse of a suburban non-medical space to accommodate a sleep disorder clinic. This project has received a top score from the American Academy of Sleep Medicine.

CONEMAUGH HEALTH SYSTEM

Johnstown, Pennsylvania

Master Facilities Plan: Implemented over a four year period, the construction of a new building, the renovation and/or relocation of major areas of the hospital, upgrading the mechanical and electrical infrastructure, and the creation of a new outpatient center and parking area.

Conemaugh Oncology: the design of a freestanding cancer treatment center that will encompass both radiation and medical oncology joined with shared public spaces and a healing garden

Administrative Services

Ambulatory Surgery Suite

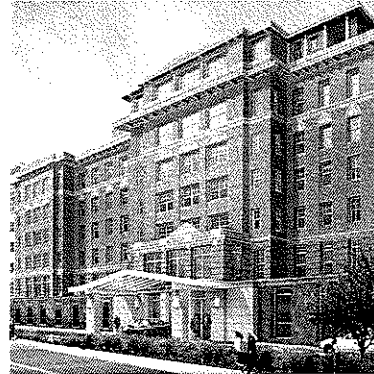
Building Facade Renovation

Department of Surgery Offices

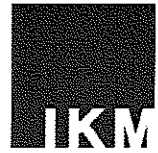
Main Entry Lobby

New Addition - Imaging Center

New Outpatient Center and Wellness Center



Selected Healthcare Experience



architecture
planning
interior design

Interior Renovations throughout the building.
Complete graphics and signage package.

FEDERAL NORTH RESEARCH COMPLEX

Pittsburgh, Pennsylvania

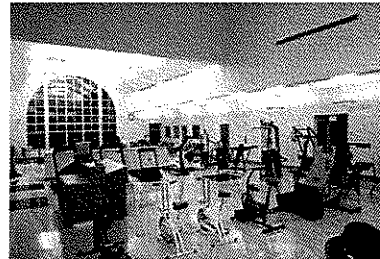
193,000 square foot freestanding office/research building and a 500 space parking garage, located a short distance away from the main hospital campus, this facility was designed with contextual sensitivity to the residential character of the surrounding neighborhood.



FORBES REGIONAL HOSPITAL

Monroeville, Pennsylvania

Growth and Expansion Plan Forbes Regional retained IKM Architects to plan and design the \$20 million, 60,000 square foot renovation and expansion of the 54-acre campus that will occur in sixteen phases. Essentially a "focused services" master plan, this project includes renovated cardiac and minimally invasive operating rooms, a new Intensive Care Unit, new GI Lab, new Cath Lab Suite with two procedure rooms, new Obstetric Department with 10 LDRPs, 5 Post Partum rooms and 2 Cesarean Section Rooms as well as a new relocated conference center, new entrance lobby, medical records and administrative offices.



Emergency Department for Forbes Regional Hospital to meet a projected demand of 53,000 annual visits up from 44,000 annual visits resulting in a plan that has 29 private exam/treatment rooms four of which are trauma rooms and three of which are mental health rooms.

Heart Center originally designed as an independent project to include open heart surgery operating rooms that would double as minimally invasive ORs, cardiovascular intensive care unit and Cath Lab Suite with procedure rooms and necessary support space, the Heart Center project was absorbed into the Growth and Expansion project above.



Relocation and renovation of the Obstetrics department including nurseries and LDRP rooms

Inpatient Unit Renovation of an existing hospital inpatient unit resulting in a 21-bed unit consists of seven private and seven semi-private rooms for acute care rehabilitation.

HARMARVILLE REHABILITATION CENTER

Harmarville, Pennsylvania

Master Facility Plan
Sub-Acute Care Unit



Selected Healthcare Experience



architecture
planning
interior design

Nursing Offices Renovations
Outpatient Phlebotomy Center
Patient Floor Revisions
Phlebotomy/Mammography
Physical/Occupational Therapy
Physician's Office Renovations
Satellite Medical Facilities
Skilled Nursing Unit
Snack Bar/Gift Shop
Strategic Facility Plan
Surgery Renovations



JEANNETTE DISTRICT MEMORIAL HOSPITAL

Jeannette, Pennsylvania

Master Facility Plan provides a framework for evaluating the existing main campus facilities and presents concepts, recommendations, and action plans that improve service delivery, increase employee productivity, maximize space utilization, minimize operational expenditures and prepare for the future growth and development of the facility.



Emergency Department renovation evaluation/study.

Outpatient Center: Renovation of a former discount department store into a 35,000 SF Outpatient Center including Surgery Center, PT/OT, "All About Health" Community Wellness Center, Diagnostic Imagery, and Physicians' Practice Suites



JERSEY SHORE HOSPITAL

Jersey Shore, Pennsylvania

IKM was commissioned to develop and analyze the current infrastructure of the hospital and design an addition to house the medically intensive services. The program includes a 12 bay E.D., 2 room OR suite, therapies, radiology, clinics, a skilled nursing unit, a 25-bed inpatient med./surg. unit and support spaces.

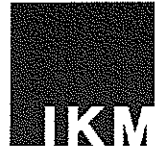
KANE COMMUNITY HOSPITAL

Kane, Pennsylvania

Strategic Facility Plan IKM Incorporated was commissioned to conduct a strategic facility plan for a 40-bed community hospital in northern Pennsylvania. The existing facility was reviewed for patient/visitor flow, staff efficiencies, and effectiveness of current space adjacencies and utilization. Design recommendations were made concerning imaging, surgery, inpatient, med/surg, and the emergency department.



Selected Healthcare Experience



architecture
planning
interior design

pediatric rheumatology and pediatric pulmonology.

The **'D' Wing** at the Women's and Babies Hospital of Lancaster includes Diagnostic Imaging, Women's Resource Center and an Ambulatory Surgery Suite.

The **Ambulatory Surgery Suite** consists of two 400 square foot operating rooms and one 500 square foot operating room organized around a Sterile Core concept. The ORs support the full range of outpatient gynecological procedures with state of the art equipment and patient tracking technology. These are supported by an eight bay Pre-Op area and a 7-bay PACU and a Sterile Processing Department.



Master Planning

LANCASTER ORTHOPEDICS

Lancaster, Pennsylvania

Surgical Suite: design of a surgical suite for an independent group of physicians, this project was not located on or associated with the Lancaster General Hospital campus.



MCGOWAN INSTITUTE FOR REGENERATIVE MEDICINE

Pittsburgh, Pennsylvania

New \$10 million two-story laboratory/office building for tissue engineering and artificial organ development, seeking the highest level LEED Rating for green building.



MEADOWLANDS HEALTH CARE CENTER

Washington, Pennsylvania

One-story addition to a head injury rehabilitation and nursing facility

Site improvements to increase parking capacity

Boiler Room Ventilation

Corridor Light Improvements

Emergency Generator

Front Entrance Improvements

Kitchen/Laundry/HVAC

Lounge Modifications

New Nurses' Station Renovations

Psychiatric Addition



MEDICAL COLLEGE OF PENNSYLVANIA AND HAHNEMANN UNIVERSITY, AND THE MEDICAL COLLEGE HOSPITALS

Philadelphia, Pennsylvania

Selected Healthcare Experience



architecture
planning
interior design

Surgery Department Addition and Renovation: The project involved new operating rooms and support, anesthesia storage and expanded pump room, orthopedic operating room and related storage, and the post anesthesia care unit and advanced recovery.

Cardiac Post Anesthesia Care Unit

OAKLAND ORTHOPEDIC ASSOCIATES

Pittsburgh, Pennsylvania

Renovation of a former auto dealership and repair garage into a two-story medical office building for a consortium of seven orthopedic surgeons. A garage adjacent to the building provided forty-eight indoor parking spaces. Renovation of a former drug store into the practice's satellite office. Included are two treatment area pods, radiography and cast rooms, exam rooms and administrative spaces. Shell space accommodates future development or additional services.

PUNXSUTAWNEY HOSPITAL

Punxsutawney, Pennsylvania

Interior Standards

PUTNAM GENERAL HOSPITAL

Hurricane, West Virginia

State-of-the-art Operating Room Addition is West Virginia's first computerized, fully-integrated, minimally invasive operating room.

THE READING HOSPITAL AND MEDICAL CENTER

Reading, Pennsylvania

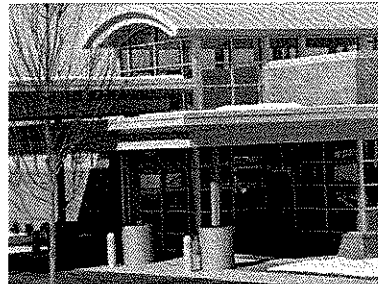
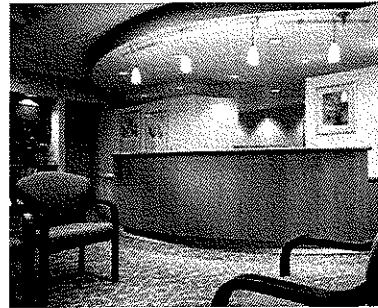
Long Term Acute Care/Rehabilitation Hospital - new \$27 million specialty hospital includes a 40-bed rehabilitation unit and 60-bed long term acute care unit along with core support spaces for administration, dietary, pharmacy, laboratory, outpatient rehab and medical records.

School of Nursing and Allied Health 60,000 square foot new building on the Hospital campus estimated construction cost of \$21.5 million.

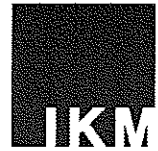
RENAISSANCE ORTHOPEDICS

Pittsburgh, Pennsylvania

Renovation of the interiors of this private doctor's suite within the Mellon Pavilion at the Western Pennsylvania Hospital; the office consists of three specialized spaces, a laboratory, a clinic and an institute.



Selected Healthcare Experience



architecture
planning
interior design

enlarged Fast Track area for minor illnesses and injuries, a pediatric treatment area, and a diagnostic area for laboratory specimen collection and medical imaging testing.

SUBURBAN GENERAL HOSPITAL

Bellevue, Pennsylvania

Strategic Facility Plan

5th Floor Medical/Surgical Unit Renovation

Exterior facade addition

Lobby/registration renovations



SUMMA HEALTH SYSTEM

Akron, Ohio

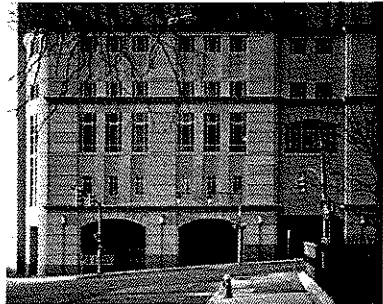
Orthopaedic Center of Excellence - Programming and conceptual design of a new \$90 million specialty hospital. The program calls for approximately 78 private room in-patient beds, 12 operating rooms, six radiology rooms, an MRI and all of the associated support spaces.



UNIVERSITY HOSPITALS OF CLEVELAND

Cleveland, Ohio

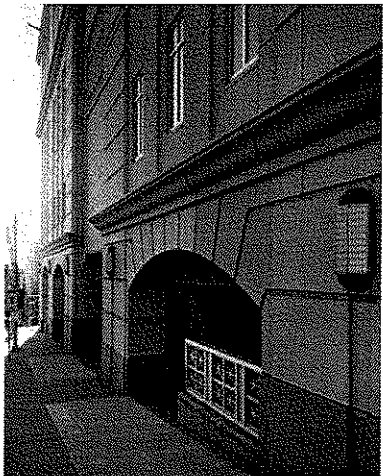
Café and servery renovation for the University Hospitals of Cleveland's Mather Pavilion



UNIVERSITY OF PITTSBURGH MEDICAL CENTER / UPMC HEALTH SYSTEM

Pittsburgh, Pennsylvania

Hillman Cancer Center: The \$140 million project consists of a new 355,000 s.f. freestanding building composed of two pavilions. The Research Pavilion contains the research labs and support space and the Ambulatory Center contains non-lab research space, clinical and office functions. The two pavilions will be joined by a skylit atrium and the entire building will be located over an underground parking garage.



Diagnostic and Treatment Center: This 11 story, 152,000 s.f. structure constructed between two existing hospital buildings houses research and treatment facilities, including. Transplant Surgery Suites, Cardiology, Dietary, and the Joint Radiation Oncology Center (JROC) as well as research facilities to support these programs.

University Surgical Associates Office renovations

Department of Surgery Office Renovations

Selected Healthcare Experience



architecture
planning
interior design

UPMC HORIZON - SHENANGO CAMPUS AND GREENVILLE CAMPUS

Shenango, Pennsylvania and Greenville, Pennsylvania

Labor, Delivery, Recovery Renovations

ER Registration

Lobbies

Skilled Nursing Unit

MRI

Arthritis Rheumatoid Center

Cardio-pulmonary unit and laboratory facilities addition

Comprehensive Outpatient Rehabilitative Facility and Wellness Center -

Renovations to a free-standing existing structure

New four-level wing (oncology, obstetrics with delivery/operating rooms, dining/kitchen facilities)

Interior renovations, accommodating building additions and departmental moves.

Portable MRI and Lithotripsy units

Renovation of existing medical/surgical wing to a skilled nursing unit

CT Scanner Unit Replacement

Emergency Department, Pharmacy/Medication Storage, Computer Room Renovations

Code Deficiency Review

Women's Care Center



UPMC SHADYSIDE

Shadyside, Pennsylvania

Master Planning: 25-year, \$100 million Master Plan

As Coordinating Campus Architect for the Hospital, IKM developed the campus building design criteria and guidelines for all work on the campus.

West Wing Addition: Schematic Design for the new eight-story inpatient bed tower with units devoted to Medicine/Surgery, Neurology/Neuro ICU, Surgery, ENT, PCCU/ICU, additional operating rooms and O.R. support areas, clinical laboratories, physical therapy and administrative support functions.



Physicians' Office Building: Built above a new parking garage, the first floor accommodates a conference center (board room, smaller conference room, waiting area and lecture hall) and ambulatory care facilities. The additional six floors above house physicians' offices.



Renovations to the School of Nursing to create space for physicians' offices and hospital administrative personnel.

Selected Healthcare Experience



architecture
planning
interior design

UPMC SOUTH SIDE

Pittsburgh, Pennsylvania

Phase II Master Plan

Community Replacement Hospital: 255-bed hospital with complete ancillary facilities. The design for The South Side Hospital brought our firm a "Merit Award for Design Excellence" from the Pennsylvania Society of Architects.

"Heart Park" a parklet with a walking course and 14 exercise stations; developed to promote fitness for the Hospital's patients and employees and also the South Side community.

Renovations to former nursing school; an eight-story structure converted to house administrative offices and meet additional Hospital storage requirements.

"Ask-A-Nurse" satellite clinic offering medical advice for walk-in and phone-in patients.

Psychiatric Unit: Conversion of an existing medical-surgical wing to a 22-bed in-patient psychiatric unit.

Outpatient Surgery Suite: Conversion of a medical library, classrooms and ancillary space into a 20-bed out-patient surgery department. Present operatories were utilized for this program.

The Heart Center - Cath Lab and support

Other projects we have designed at The South Side Hospital include:

CT Scan Renovations

Endocrinology/Proctology Exam Rooms

ER Signage

Exterior Signage

GI Labs

Medical Offices

Occupational Therapy Relocation

Physical Therapy

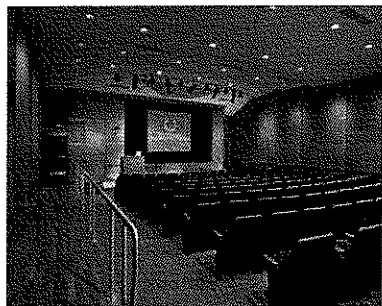
Recovery Room Renovations

VA MEDICAL CENTER

VA PITTSBURGH HEALTHCARE SYSTEM (VAPHS)/ VETERANS' ADMINISTRATION

Pittsburgh, Pennsylvania

The new **Southwestern Pennsylvania Veterans' Center** houses 236



Selected Healthcare Experience



architecture
planning
interior design

Ambulatory Surgery Unit Expansion: Renovation of interior spaces to accommodate a pre-op area, waiting reception, a discharge lounge, physician locker rooms and a bridge connection to improve efficiency and manage patient circulation

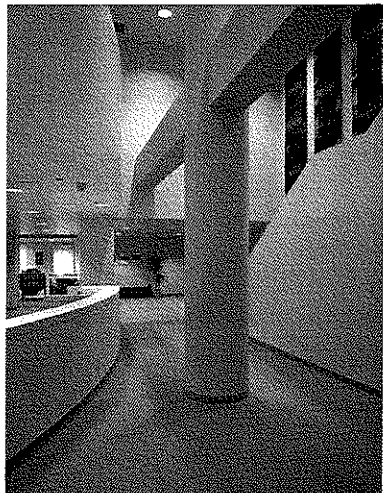
Conference Center: Infill construction and renovation to house an auditorium and flexible breakout rooms featuring rear projection technology and network wired seating in an acoustically controlled environment. Architectural accents include a glass-enclosed winter-garden that serves as an exhibit hall and for pre-function activities and also connects to an exterior courtyard.

Orthopedic Inpatient Unit: 26-bed unit which utilizes a decentralized nursing model in a unit appointed in a hospitality setting to reflect the 'wellness' aspect of the total joint program. Common spaces are developed to promote the socialization of patients and the benefits of group rehabilitation.

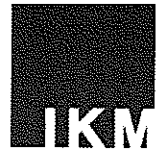
PACS System: IKM was instrumental in the design for the installation of the state-of-the-art Picture Archiving and Communication System (PACS). Completed in conjunction with the radiography department, and one of only a few currently installed throughout the country, this film-less system improves the delivery of patient care by providing convenient access to digitized information to physicians where they need it and when they need it.

Other spaces include:

- Cancer Clinic
- Cath Lab
- Cesarean Section Rooms
- Clinical Laboratory Relocation/Consolidation
- Dental Practice Relocation
- Department of Medicine Office
- Department of Surgical Offices
- Dietary/Food Service/Cafeteria Renovations
- Education and Conference Center
- E.P. Lab
- Family Practice Renovations
- Geriatric Clinic – Vintage
- GME/CME
- Human Resources Department Renovations/Expansion
- Interventional Angiography
- LDR(s)
- New Operating Rooms
- Nuclear Medicine/Ultrasound Unit Relocation
- Nursing Administration
- On Call Rooms
- Outpatient Lab



Selected Healthcare Experience



architecture
planning
interior design

WEST VIRGINIA UNIVERSITY HOSPITALS, RUBY MEMORIAL HOSPITAL

Morgantown, West Virginia

Ruby Memorial Master Facility Plan - master planning services for the Morgantown facilities encompassing Ruby Memorial Hospital, Chestnut Ridge Hospital, The Eye Center, the Physicians Office Center, the Child Development Center and the Rosenbaum Family House covering a total of 522 patient beds and over 1 million square feet of space.

Neonatal Intensive Care Unit

PACU

OR corridor

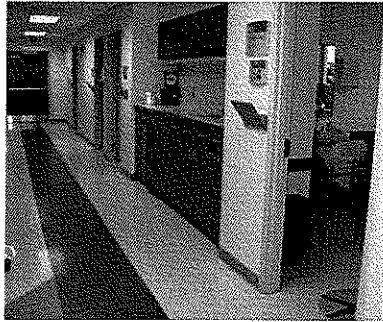
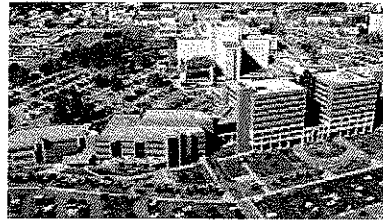
Cardio-Thoracic Unit

Cardiac Holding

Pediatric Unit

Inpatient Bed Study

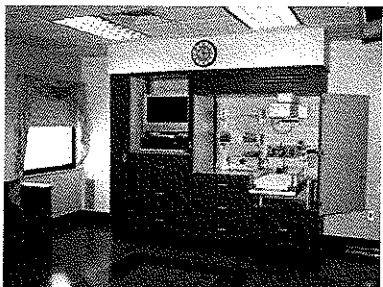
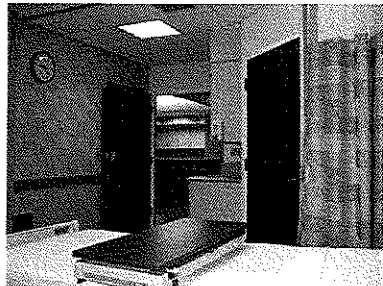
Parking Deck Study



WINDBER MEDICAL CENTER

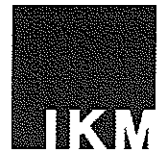
Windber, Pennsylvania

Windber Research Institute: state-of-the-art laboratory addition to breast cancer research center



John C. Schrott, AIA, ACHA

Principal in Charge



architecture
planning
interior design

Mr. Schrott joined IKM in 1982 and currently serves as the President and managing principal of the firm. He is a member of an elite group of Certified Healthcare Architects, admitted through a board certification process, the **American College of Healthcare Architects**. Mr. Schrott directs the healthcare practice group at IKM.

In addition to his management duties, Mr. Schrott has spoken at numerous healthcare conferences and seminars regarding the current state of healthcare design. He has been recently published in **Hospital News**, **Healthcare Building Ideas**, **Healthcare Design**, and **West Virginia Executive** magazines among others.

A representative sampling of the relevant projects for which he was or is responsible follows:

Summa Health System Orthopaedic Hospital – Principal in Charge for the programming and design of a new orthopaedic center. The program calls for approximately 96 private room in-patient beds, 12 operating rooms, six radiology rooms, an MRI and all of the associated support spaces.

Lancaster General Hospital Orthopedic Center – Principal in Charge for the \$58 million new Orthopedic Center addition and new hospital front entrance which includes operating rooms, nursing units, rehab facilities, clinics and support. The private patient rooms have hospitality accoutrements of an inlaid wood look floor, armoire, comforter and higher end finishes.

Lancaster General Hospital, 3-West Patient Room Renovations – Principal in Charge for the design of aesthetic improvements for the 22-bed patient unit including 16 private patient rooms and 3 semi-private rooms. Aesthetic upgrades included: new HVAC, finishes, wardrobes, televisions, handwash sinks and lighting.

Lancaster General Hospital, 4-West Patient Unit Renovation – Principal in Charge for the design of aesthetic improvements for ongoing patient unit upgrades including new finishes on floors, wall, and ceilings. This project is a conversion to a 20-bed unit with new wardrobes and room sinks, conversion of existing space on the fourth floor to a waiting room, renovation to upgrade finishes in the elevator lobby, and modifications to the MEP infrastructure to support the changes.

Lancaster General Hospital, Women and Babies Hospital – Principal in Charge for the \$24 million, freestanding state-of-the-art speciality hospital. Includes operating rooms and support, PACU, NICU, LDR's, inpatient units, and ambulatory surgery. Also responsible for the medical office building project and LGH's 20-year phased master facility plan.

Matthew R. Hansen, Assoc. AIA

Project Manager



architecture
planning
interior design

Mr. Hansen is a graduate of Washington State University, College of Engineering and Architecture with a Bachelor of Science and a Bachelor of Architecture. He joined IKM in 2005. He has gained considerable project experience from schematic design through construction documentation as a member of the design team working toward his professional license.

As the **project manager**, Mr. Hansen is primarily responsible for the detailed execution of the project's design and documentation. He represents the firm in all detailed communications with the client, consultants and contractors. He manages the architectural support staff, production team and the consultants to ensure the project's completion. He communicates regularly with the principal-in-charge regarding project status, coordinates with the specifications writer and represents the firm during construction administration. He is a member of IKM's in-house design review committee providing valuable design input on all of the firm's projects. Since joining IKM, his experience has encompassed a variety of related projects. These include:

Reading Hospital and Medical Center Post Acute Hospital – Project coordinator for new 186,000 s.f. specialty hospital dedicated to rehabilitation and long term acute care needs for inpatient populations.

Lancaster General Hospital, 3-West Patient Room Renovations - Project coordinator to design aesthetic improvements for the 22-bed patient unit including 16 private patient rooms and 3 semi-private rooms. Aesthetic upgrades included: new HVAC, finishes, wardrobes, televisions, handwash sinks and lighting.

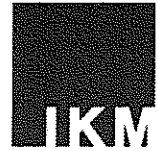
Lancaster General Hospital, 4-West Patient Unit Renovation - Job captain and project coordinator to design aesthetic improvements for ongoing patient unit upgrades including new finishes on floors, wall, and ceilings. This project is a conversion to a 20-bed unit with new wardrobes and room sinks, conversion of existing space on the fourth floor to a waiting room, renovation to upgrade finishes in the elevator lobby, and modifications to the MEP infrastructure to support the changes.

Lancaster General Hospital Women's and Babies' Hospital Nursery Addition – Project coordinator for the expansion and renovation to the existing nursery to create a 'Special Care Nursery' for Level II infants and Newborn Nursery for Level I infants.

West Penn Hospital, Groff Orthopedics – Project coordinator to locate private practice for Groff Orthopedics in the professional office building at the Forbes Regional Campus. The project includes fit-out for five exam rooms, two consult spaces, reception and waiting, as well as a staff lounge and appropriate support space.

Stacey Nemcek, Assoc. AIA

Project Coordinator



architecture
planning
interior design

Ms. Nemcek joined IKM upon completion of her Master of Architecture degree from the State University of New York at Buffalo. She has been working on a variety of healthcare projects as a graduate/intern architect to complete her Intern Development Program (IDP) requirements toward her professional license. As an intern architect, Ms. Nemcek is an associate member of the American Institute of Architects.

As a **project coordinator**, Ms. Nemcek's responsibilities include development of Construction Drawings including plans, elevations, building & wall sections, and construction details as required by the Project Manager. She also assists the design team during the bidding and construction administration phases of each project.

Some of her relevant experience includes:

WPH Forbes Regional Campus Growth and Expansion – Project Coordinator/graduate architect for the implementation of IKM's 62,000 SF master plan that includes surgery department expansion with two open heart ORs that will double as minimally invasive ORs, 10-bed Intensive Care unit, Cath Lab Suite with 2 procedure rooms and relocation of the medical records department, GI Lab, 15-bed Obstetrics unit, and Psychiatric Nursing unit.

St. Clair Hospital Addition – Project coordinator/graduate architect for the addition to St. Clair hospital that doubled the size of the existing Emergency Department and created a contemporary new look for the hospital.

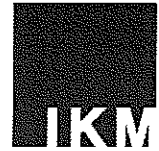
Memorial Hospital Emergency Department Expansion – Project Coordinator/Graduate Architect for the renovation of the existing Emergency Department to correct circulation patterns, increase patient privacy and add additional space. There will be 20 exam/treatment rooms all of which will be flexible to accommodate all types of patients. The project will be built in multiple phases so that the Department can remain fully operational at all times.

WPH Forbes Regional Cardiac Intensive Care Unit – Project coordinator for the design development and construction drawings for this 8,800 square foot renovation project to create a Cardiac Intensive Care Unit (ICU). Patient rooms in this new unit are designed as multi-acuity rooms to accommodate a patient for his/her entire length of stay. Project also included family waiting area, and staff areas such as locker/shower rooms, offices and conference space.

UPMC Magee Women's Hospital LDR Expansion – Project coordinator for the renovation of existing space to expand the Labor and Delivery Rooms to twenty-two rooms, including the addition of one handicapped accessible room. A new staff lounge, two on-call rooms and offices for the Medical Director and Nurse Educator are also included in the project scope.

Melanie Como Harris, AIA, LEED® AP

LEED Specialist, Project Architect



architecture
planning
interior design

Ms. Como Harris joined IKM as a registered architect with more than 10 years experience and impressive credentials. She is registered in the State of California and holds her National Council of Architectural Registration Boards (NCARB) certification. Ms. Como Harris is also a LEED® Accredited Professional and qualified as an Historic Architect per The Secretary of the Interiors Qualifications. She has worked as a Senior Designer, Historical Consultant, Project Manager and Project Architect on a variety of project types.

As the **LEED® Specialist** for the team, Ms. Como Harris is primarily responsible for the detailed execution of the project design as it relates to certification and documentation. She works with the design team and the client in all phases of design to incorporate sustainable concepts throughout the project. She communicates regularly with the project manager regarding the project's LEED® scorecard and coordinates with the IKM specifications writer to include appropriate materials to meet the client's sustainability goals. Ms. Como Harris reviews submittals and shop drawings for LEED® compliance. Ms. Como Harris' experience and knowledge make her a valuable asset to the design team by handling sustainable design issues and coordinating the LEED® certification process.

As the **project architect**, Ms. Como Harris is primarily responsible for the detailed execution of the project design and documentation and working with the architectural support staff and production team and the consultants. She communicates regularly with the project manager regarding project status, coordinates with the specifications writer and represents the firm during construction administration. She is a member of IKM's in-house design review committee providing valuable design input on all of the firm's projects.

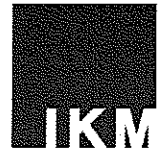
Since joining IKM, Ms. Como Harris has added several design projects to her list of qualifications, these include:

The Western Pennsylvania Hospital School of Nursing – Project Manager/Architect for the interior renovation and upgrades of all interior finishes of the School of Nursing including 80+single-unit dorm rooms, lecture and general classrooms and faculty and staff offices.

The Reading Hospital and Medical Center Post Acute Hospital – Project Architect as part of the IKM team working on design details and construction documents for a new facility that includes a 60+ bed long term acute care unit and nearly 40-bed rehab unit along with core support spaces for administration, dietary, pharmacy, laboratory, outpatient rehabilitation, and medical records.

Deborah Martonik, CCS, CSI

Specification Writer



architecture
planning
interior design

Ms. Martonik serves as IKM's specification writer. As a fifteen year Certified Construction Specifier, she has been an instructor of "Principles of Construction Documents" for the past 13 years. She is currently programs chairperson and an 18-year member of the Construction Specifications Institute. She holds a Bachelor of Arts from the University of Pittsburgh.

While at IKM, Ms. Martonik has completed project manuals on approximately 35 projects and participated or had partial responsibility for completing or supervising at least 5 more. She maintains and updates the office master specifications and the office architectural reference library.

Some of the IKM projects for which she has provided or supervised specifications include:

Reading Hospital and Medical Center Post Acute Hospital–

Specification writer for the new specialty hospital dedicated to rehabilitation and long term acute care needs for in-patient populations.

Lancaster General Hospital, 3-West Patient Room Renovations –

Specification writer to design aesthetic improvements for the 22-bed patient unit including 16 private patient rooms and 3 semi-private rooms. Aesthetic upgrades included: new HVAC, finishes, wardrobes, televisions, handwash sinks and lighting.

Lancaster General Hospital, 4-West Patient Unit Renovation –

Specification writer for the aesthetic improvements for ongoing patient unit upgrades including new finishes on floors, wall, and ceilings. This project is a conversion to a 20-bed unit with new wardrobes and room sinks, conversion of existing space on the fourth floor to a waiting room, renovation to upgrade finishes in the elevator lobby, and modifications to the MEP infrastructure to support the changes.

WPH Forbes Regional Campus Growth and Expansion –

Specification writer for the implementation of IKM's 62,000 SF master plan that includes surgery department expansion with two open heart ORs that will double as minimally invasive ORs, 10-bed Intensive Care unit, Cath Lab Suite with 2 procedure rooms and relocation of the medical records department, GI Lab, 15-bed Obstetrics unit, and Psychiatric Nursing unit.

Children's Hospital Minimally Invasive Operating Room–

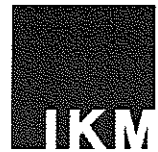
Specification writer for the renovation of existing sixth floor Surgery Department to accommodate a new minimally invasive operating room and support spaces.

Children's Hospital Outpatient Orthopedics –

Specification writer for the renovation of existing hospital space on the first and third floors to improve function and finishes. This project relocated the Hospital's

Emilie Criner, IIDA

Interior Designer



architecture
planning
interior design

Ms. Criner joined IKM as an interior designer in 2005. She has five years of professional practice in interior design including showroom, visual merchandising, as an independent and a team interior designer. During her time with the firm, she has established herself as an instrumental player in all aspects of the interiors department as well as within the firm.

Ms. Criner has provided drafting, space planning, furniture, materials and finishes selections and specification. She is an integral part of the design team working with the architects to unite the interior designs with the architecture.

She has worked on a variety of projects since joining IKM including education, corporate, and healthcare. Some of her relevant project experience includes:

WPH Forbes Regional Campus Orthopedic Inpatient Unit – Interior designer for this \$2.5 million renovation encompassing 18,000 square feet; to include 42 orthopedic inpatient beds and physical and occupational therapy spaces.

West Penn Hospital, Forbes Regional Campus Growth and Expansion – Interior Designer providing alternative design schemes for materials for the \$20 million, 60,000 square foot renovation and expansion includes renovated cardiac and minimally invasive operating rooms, Intensive Care Unit, GI Lab, Cath Lab Suite, new Obstetric Department, Cesarean Section OR's, conference center, new entrance lobby, medical records and administrative offices.

West Penn Hospital Orthopedics, Dr. Seel Relocation – Interior designer for the renovation of existing hospital space including plans and interior elevations to accommodate the relocation of an orthopedic physician office to the second floor of the Mellon Pavilion. Updates included paints, laminates, minimal furniture, fabrics, and flooring.

Rehabilitation Practitioners, Medical Office Building Fitout – Interior Designer for the schematic design of the tenant fit out of an orthopedic physician practice in the Martinsburg Medical Office Building spaces included 12 exam rooms, x-ray/imaging, staff and physician offices and conference area.

Oakwood Center Medical Office Building Radiation Oncology Addition – Project interior designer for the 9,000 square foot Gamma Knife addition that includes exam and procedure rooms, physicians' offices, surgery, recovery and appropriate support spaces.

West Penn Hospital Medical Center Clinic Practice Expansion at Cercone Medical Office Building – Project Interior designer for this

JAMES P. KULICK, P.E., LEED AP

VICE PRESIDENT

PERSONAL RESUME

Mr. Kulick is a graduate of The University of Akron, Ohio where he received a Bachelor of Science Degree in Mechanical Engineering in 1978. He is a Registered Professional Engineer in the State of Ohio.

Shortly after graduation, Mr. Kulick accepted a position with Mosser Construction Co. as Field Engineer for the construction of the Solon, Ohio Waste Water Treatment Plant. When the project was nearing completion, Mr. Kulick joined the staff of an Akron, Ohio based mechanical contracting firm in 1979. There he performed HVAC, plumbing, and process piping estimating and project management, including coordination of all mechanical subcontractors for industrial, commercial and institutional buildings. While working as Project Manager for this mechanical contracting firm, Mr. Kulick gained knowledge of HVAC, plumbing and process piping systems that is not always available in firms engaging only in design.



Desiring to further pursue a career in design, Mr. Kulick joined the consulting firm of Scheeser Buckley Mayfield LLC, in 1983. Since 1983, Mr. Kulick has developed from Designer to Project Manager, and further to the position of Principal with the firm. He has participated in and managed the design of HVAC, plumbing and fire protection systems for commercial, industrial, and institutional clients throughout Ohio, Pennsylvania and West Virginia.

James P. Kulick, P.E. has served as principal in charge, project manager and lead mechanical design engineer on many large mechanical projects since he joined the firm of Scheeser*Buckley*Mayfield Inc, in 1983. Jim has been involved in many complex projects throughout Northeast Ohio

Projects with which Jim has been involved vary in nature and range from small renovations to major remodeling involving multiple buildings and multiple campuses. Jim has managed the design of several specialized systems, which include boiler plants, central chilled water plants; medical gas systems including alarming, isolation room exhaust systems, surgical suites, including specialized exhaust systems for orthopedic surgery, clean rooms; medical laboratories; computer room HVAC; mainframe computer cooling systems; high and low pressure air distribution systems; pneumatic, electric, and direct digital electronic control systems; laboratory gas piping systems.

Jim has received design awards, one of which was the "Hospital Renovation Project of the Year" from Energy User's News magazine, for his chilled water system design at Summa Health Systems, Akron City Hospital facility.

Jim is a LEED™ 2.0 Accredited Professional and registered as a Professional Engineer in the State of Ohio, Florida, West Virginia and Pennsylvania.

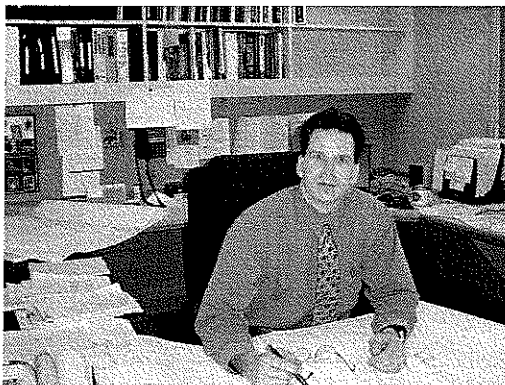
Scheeser Buckley Mayfield LLC

MARLON C. HATHAWAY, P.E.

VICE PRESIDENT – ELECTRICAL ENGINEERING

PERSONAL RESUME

Mr. Hathaway attended The University of Akron where, in 1992, he earned his Bachelor of Science Degree in Electrical Engineering. While at The University of Akron, Mr. Hathaway accepted a position through the cooperative education program at the Veteran's Administration Medical Center in Brecksville, Ohio. During this engagement he gained knowledge of the construction industry.



After graduation, Mr. Hathaway began his career as a consulting engineer with Scheeser Buckley Mayfield LLC. He has since been involved with all aspects of electrical design including: lighting, power distribution, telecommunications systems, fire alarm systems, video/security systems, nurse call systems and CATV/MATV distribution systems. Mr. Hathaway's responsibilities include both budget and finish electrical construction estimates. He has worked closely with electrical contractors on recent owner requested design/build projects.

During his consulting career, Mr. Hathaway has designed many hospital and health care related buildings. His experiences cover a wide spectrum in this specific field including O.R. Suites, Pathology Labs, Emergency and Trauma Rooms and Medical Office Buildings. He has prepared contract documents for complex electrical medical equipment including x-ray, CT scanners and digital video processing equipment. He has completed projects in the states of Ohio, West Virginia, Kentucky, Pennsylvania, and Florida.

Mr. Hathaway has extensive experience in the design of complex systems such as fire alarm, audio/video, telecommunications (LAN) systems, and CATV/MATV distribution systems. He is currently a member of the Illuminating Engineering Society (IES), Cleveland Section and has also served as Treasurer in past years.

Mr. Hathaway is registered in the State of Ohio, West Virginia, Kentucky, Pennsylvania and Florida.

DOUG CHAPMAN

ELECTRICAL ENGINEER

PERSONAL RESUME

Mr. Chapman attended Bowling Green University and graduated with a Bachelor of Science in Electronic Technology.

Mr. Chapman started his career at Dynamix Engineering, Ltd. located in Columbus, Ohio. He was responsible for electrical design at educational facilities, churches, outpatient clinics, tenant occupancies and offices. He also followed projects in to construction by reviewing shop drawing submittals.

Mr. Chapman then relocated to Cleveland, Ohio and worked at Bacik Karpinski Associates, Inc. He assisted with branch circuit design for both new construction and renovation projects. He was also involved in the specification process and assisted with transferring engineering red-lines to AutoCad.

Mr. Chapman joined Scheeser Buckley Mayfield LLC in September 2001 and has been actively involved with many projects. He has been responsible for branch circuit design and configuration of new and renovated facilities including outpatient clinics, hospitals, educational facilities and offices. He has assisted with specification of lighting fixtures and corresponding lamping based on space function and client need and specification of over current, short circuit protection and safety devices for HVAC, plumbing, kitchen and other types of equipment. Mr. Chapman also assists with the design of various electrical systems, including nurse call, local intercom, and dimming.



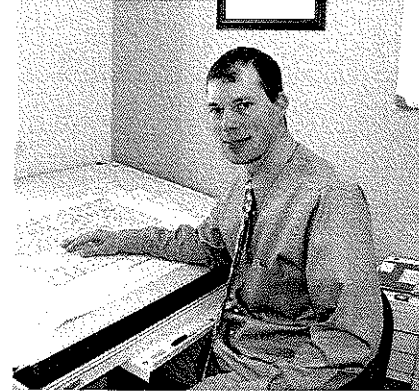
CHAD B. MONTGOMERY, P.E., LEED AP ASSOCIATE – MECHANICAL ENGINEER

PERSONAL RESUME

Mr. Montgomery attended the Ohio Northern University where he received his Bachelor of Science in Mechanical Engineering in 1997.

Mr. Montgomery received his State of Ohio Professional Engineering License in 2002. He became a LEED 2.1 Accredited Design Professional in October of 2006. He is also a full member of the American Society of Heating, Refrigeration, and Air Conditioning Engineers (ASHRAE). He earned his ASHRAE Healthcare Facility Design Professional Certification (HFDP) in January of 2008.

Upon graduation, Mr. Montgomery joined Scheeser Buckley Mayfield in 1997 and has served as a design project manager and lead mechanical engineer on a wide variety of projects, primarily for health care facilities and universities and has extensive experience in all aspects of the design of mechanical systems for buildings, including advanced HVAC, Plumbing, and Fire Protection systems. He also acts as the Project Manager for his projects within the office, coordinating the design team's efforts to ensure a quality project, with emphasis on design deadlines and construction budgets.



Larger projects in Mr. Montgomery's background include eight new Residence Halls at Kent State University; 140,000 square foot new Student Recreation Center and 133,000 square foot new Athletics Field House at the University of Akron; 210,000 square foot major addition to St. Elizabeth Health Center, located in Boardman, Ohio, with a total construction budget of \$60 million. The addition incorporated 6 operating rooms, critical and normal intensive care units, central sterile, endoscopy suite, 128 bed patient tower, and other related functions. Also, a new central chiller plant, boiler, and heating water system were added to the facility to account for the needs of this addition.

Mr. Montgomery has also designed multiple smaller scale projects such as an 18,000 square foot lab renovation at Northeast Ohio University College of Medicine; 15,000 square foot athletics office addition to the University of Akron Field House; 7,500 square foot infill for surgery waiting, conference rooms, and a gift shop at St. Elizabeth Health Center in Youngstown; 6,000 square foot Cancer Care Center for St. Elizabeth Health Center; Chilled Water Plant Replacements at Akron General Medical Center and Aultman Hospital.

Other clients and facilities with which Mr. Montgomery has experience include Case Western Reserve University, Camden Clark Hospital, Cleveland State University, Lake West Hospital, West Virginia School of Osteopathic Medicine, VAMC – Wade Park.

**JOHN A. VARGA, E.I.T.
MECHANICAL ENGINEER**

PERSONAL RESUME

Mr. Varga attended the University of Akron where he received his Bachelor of Science in Mechanical Engineering in 1997. He has attained his E.I.T. Certification.

During his senior year in college, he began his engineering career working for a precast concrete manufacturer. His responsibilities included the design, layout, production and installation drawings, and volume calculations of extended aeration sewage treatment plants and pump stations. This included the calculation of treatment design based on Ohio EPA and Ten-State Standard requirements. Plant design included anti-floatation measures, tank capacities, effluent quality, and OSHA compliance. Equipment design included blower and motor sizing, pump sizing, losses through piping systems, electrical requirements, flow measurement, and preparation of specifications.



Mr. Varga joined the consulting firm of Scheeser Buckley Mayfield LLC in May of 1999. Since joining the Plumbing Department, he has performed calculations sizing water lines, sanitary lines, booster pumps, water heaters, mixing valves, medical gas systems, and fire protection systems based on Ohio Basic Building Codes, National Fire Protection Association, and local county and city codes. He has been lead plumbing engineer on several large projects including Kent State University Residential Dormitories, Marshall University Dormitories, Jackson Strausser Elementary School, Heartland Behavioral Health Campus, University of Akron Dormitories, and Huttonsville Correctional Center. These projects included multiple buildings on a campus setting with centralized mechanical equipment plants and utility distribution loops.

Mr. Varga is a member of the American Society of Plumbing Engineers.

JOE HARLESS, RCDD

SENIOR TELECOMMUNICATIONS DESIGNER

PERSONAL RESUME

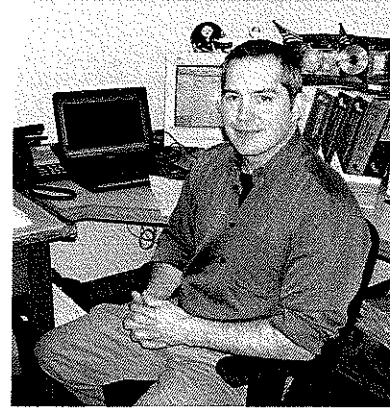
Mr. Harless has been in the telecommunications industry since he left the construction field in 1991 to install security alarms, fire alarms, CCTV systems, access control systems, CATV cabling, UTP and fiber optic structured cabling, voicemail systems, KSU's, and network electronics for GBS Computer & Communication Systems.

In 1993, Mr. Harless became a Project Manager for GBS where he supervised and coordinated all major installations. During this time he received training and certifications from many manufacturers to ensure GBS' ability to offer extended warranties for their installations.

In 1997, Mr. Harless accepted the position as Network Designer at GBS. There, he performed design, engineering and estimating duties for all GBS' structured cabling and networking projects. In addition to these functions, he provided technical training and support to the field technicians and was responsible for the research and selection of all materials, tools and test equipment.

He received the designation of Registered Communications Distribution Designer (RCDD®) from the Building Industry Consulting Services International (BICSI®) organization in 1997.

Mr. Harless joined Scheeser Buckley Mayfield LLC in July, 2002 as the Senior Telecom Designer and performs the majority of our structured cabling designs along with related telecommunications and technology systems.



Bicsi[™]
INDIVIDUAL
MEMBER

Bicsi[™]
RCDD

Scheeser Buckley Mayfield LLC



Allegheny **Design Services** *Structural Engineering*

102 Leeway Street
Morgantown, WV 26505
Phone: (304)599-0771
Fax: (304)599-0772

E-Mail: Dave@AlleghenyDesign.com
Web: www.AlleghenyDesign.com

David R. Simpson, P.E., SECB, MBA **President**

Education:

West Virginia Institute of Technology
B.S. Civil Engineering

West Virginia University
Masters Business Administration

West Virginia State College
Architectural Technology

Professional Registrations:

Year first registered: 1983
Structural Engineering Certification Board
West Virginia
Pennsylvania
Maryland
Virginia
District of Columbia
National Council of Examiners for Engineering and Surveying

Professional Memberships:

American Society of Civil Engineers
Structural Engineering Institute, Charter Member
American Concrete Institute
American Institute of Architects – West Virginia Chapter
American Institute of Steel Construction, Inc.
American Iron and Steel Institute Member

Continuing Education:

2005 AISC Specification for Structural Steel Buildings – September 27, 2006 – Pittsburgh, PA
ASCE Testifying Skills for Engineers – February 16, 2007 – Orlando, FL

Professional Experience:

Responsible for project management and design at Allegheny Design Services. Experience includes over 24 years in structural design and project management for industrial, commercial, institutional, and nuclear/chemical facilities utilizing steel, concrete, masonry, and wood. Past accomplishments include design and construction administration of health care facilities, hotels, schools, shopping centers, aircraft hangars, numerous retail facilities, and numerous forensic engineering assignments. Experience has been obtained from the following assignments:



Allegheny Design Services

Structural Engineering

102 Leeway Street
Morgantown, WV 26505
Phone: (304)599-0771
Fax: (304)599-0772
E-mail: Mike@AlleghenyDesign.com
Web: www.AlleghenyDesign.com

Michael L. Sipe, E.I. Engineering Intern

Education:

West Virginia University Institute of Technology
B.S. Mechanical Engineering
Minor: Mathematics

Awards/Achievements/Organizations:

Deans List, last 4 completed semesters
Member of Pi Tau Sigma
Member of AISC
Associate Member of ASCE

Professional Registrations:

West Virginia, Engineering Intern License # 8519

Professional Experience:

Responsibilities include structural engineering design, construction documents, quality control, field engineering and project engineering.

Experience record:

Avery Court Apartments, Parkersburg, WV
Cutlip Christie Office Complex, Clarksburg, WV
Dominion Exploration Addition, Jane Lew, WV
Fairmont State University Smoke Vents, Fairmont, WV
Finite Element Analysis of Various Material Handling Structures
Gassaway Bank, Flatwoods, WV
Glenmark Office Building, Morgantown, WV
Greer Limestone Conveyor Structure Renovations, Morgantown, WV
Morgantown Event Center, Morgantown, WV
Pressley Ridge School Residence Hall & Dining Facilities, Clarksburg, WV
Proplex Athletic Training Facility, Morgantown, WV
Waterfront Marina, Morgantown, WV
West Milford Elementary School Classroom Addition, West Milford, WV
WVU Downtown Student Housing, Morgantown, WV
WVU Puskar Academic Center, Morgantown, WV

Courses and Continuing Education:

WVU Structural Analysis I, Spring 2006
WVU Steel Design, Fall 2006
WVU Reinforced Concrete Design, Spring 2007
AISC Design Steel Your Way with the 2005 AISC Specification, September 2006
ASCE Steel Framed Buildings, May 2007
AISC Façade Attachments to Steel Frames, September 2007
ASCE Reinforced Masonry: Design and Construction, November 2007



**Allegheny
Design Services**
Structural Engineering

102 Leeway Street
Morgantown, WV 26505
Phone: (304)599-0771
Fax: (304)599-0772
E-mail: Jason@AlleghenyDesign.com
Web: www.AlleghenyDesign.com

**Jason D. Robinson, E.I.
Engineering Intern**

Education:

West Virginia University
B.S. Civil Engineering

Awards/Achievements/Organizations:

Dean's List
Member of AISC
Associate Member of ASCE

Professional Registrations:

West Virginia, Engineering Intern License #8699

Professional Experience:

Responsibilities include structural engineering design, construction documents, quality control and field engineering.

Experience record:

Gabriel Brothers Renovation, Clarksburg, WV
Goshen Baptist Church, Morgantown, WV
Mylan Upper Warehouse to Labs, Morgantown, WV
The Dayton, Morgantown, WV
The View at the Park Phase 2, Morgantown, WV

Courses and Continuing Education:

WVU Steel Design – Fall 2007
AISC Façade Attachments to Steel Frames, September 2007
ASCE Reinforced Masonry: Design and Construction, November 2007

JEFF L. NELSEN, RLA
Director



TECHNICAL SKILLS

- Project Management
- Master Planning
- Land Planning
- Site Development
- Urban Design

REGISTRATION

- Landscape Architect – WV, OH, VA, IN, MD

EDUCATION

- B.S. in Landscape Architecture, West Virginia University, 1976

AFFILIATIONS

- Affiliate Member West Virginia Chapter of American Institute of Architects

Mr. Nelsen has practiced landscape architecture for 31 years. He has a wide variety of experience in community revitalization and urban design, campus planning, site planning and design for residential, commercial and public places, park and recreation design, and environmental restoration.

SELECTED PROJECT EXPERIENCE

Camp Laurel Hill Battlefield

Belington, WV – site development master plan and construction documents

Charleston Streetscapes

Charleston, WV – streetscapes in Downtown Charleston

Quarry Creek Development

Charleston, WV – residential development; project won an Honor Award from WVASLA

Northgate Business Park Guidelines

Charleston, WV – commercial site development; project won an Honor Award from WVASLA

Kanawha Falls Public Access

Glen Ferris, WV – WVDNR riverfront park project won a Merit Award from WVASLA

Falls of Hills Creek Trail

Monongahela National Forest, WV – ½ mile trail/deckwalk to 3 waterfalls

Tamarack Art Center

Beckley, WV – site development; project won a Merit Award from WVASLA

Stonewall Jackson Resort State Park

Roanoke, WV – master planning and construction documents

Aspen Village

Canaan Valley, WV – site development design and construction administration for residential development

Davis Riverfront Park

Davis, WV – master plan for new park along the Blackwater River

Old Brooklyn Neighborhood Plan

Cleveland, OH – urban plan for neighborhood near the Cleveland Zoo.

JENNIFER L. ROSS, P.E., LEED AP
Director



TECHNICAL SKILLS

- Site planning
- Utility design
- Roadway design
- Drainage and stormwater management
- Project coordination and permitting
- Feasibility studies and analysis

REGISTRATION

Professional Engineer – Ohio,
Illinois

EDUCATION

B.S. Civil Engineering
The University of Dayton

CERTIFICATIONS

LEED™ Accredited Professional

AFFILIATIONS

- National Association of Industrial and Office Properties (NAIOP)
- Associate Member of the Building Industry Association (BIA) of Central Ohio
- Commercial Real Estate Women (CREW) Columbus
- Altrusa

SELECTED PROJECT EXPERIENCE

Ms. Ross has 12 years of experience in project management, site layout, and design for multi-family, single-family, and commercial/industrial land development projects. Design includes feasibility studies, budgeting and cost estimation, underground utilities, grading, roadways, and hydrology studies.

Her background extends from initial site selection to construction bidding and coordination. Ms. Ross is also experienced in permitting through state and local agencies to obtain the necessary approvals specific to each project. She is well versed in the needs of the clients and their particular projects. Her skills demonstrate an ability to be very responsive to complete projects on time and within budget.

Civil Engineering Project Highlights Include:

- McConnell Heart Health Center, Columbus, OH
- Doctor's Hospital MOB, Columbus, OH
- Fayette County Memorial Hospital Feasibility Study, Fayette County, OH
- Dr. Anthony Dental Office, Sunbury, OH
- Pacer Dental Office, Delaware, OH

Franklin County, OH – Village at Jefferson Run, 229 detached condominiums on 32 acres requiring 3 retention ponds (2 in a series). Provided project coordination and permitting assistance.

Columbus, OH – Numerous residential and commercial projects involving single-family homes, condominium developments and large-scale retail development centers. Includes work in the Polaris development area as well as various locations around the City. Established good working relationships with City department staff as well as knowledge of review processes and permitting/fees. Includes storm water management/erosion control, sanitary and water design and approval as well as zoning clearance/building permit submittals.

Delaware County, OH – 85 acre commercial subdivision with out lots. Various sanitary sewer studies/analyses and alignments for developers and local governments including future wastewater treatment plant locations, analysis of tributary areas and feasibility analysis of development options within these areas. Also designed a common access drive subdivision including engineering plans and County approvals/public meetings.

City of Delaware, OH – Joy Avenue storm sewer improvements, design of storm sewers and rehabilitation of existing roadways in area of problematic drainage for the City. Included provisions for storm water quality prior to discharge into the Olentangy River. Conceptual engineering (utility service, storm water management) of potential mixed use development on approx. 150 acres to be annexed into the City.

Marion County, OH – Village at Marion Highlands, 354 detached condominiums on 59 acres requiring conversion of detention (dry) pond into a retention (wet) pond as well as public roadway design. Worked through zoning at the Township level prior to site development.

Sunbury, OH – Sunbury Meadows development, 760 single family homes located on 275 acres of land surrounding an abandoned coffee plant (Nestle property). This project involved wetland areas, wastewater treatment plant/forcemain, off-site sanitary connection as well as substantial public opposition.

TRAVIS J. MATHEWS, ASLA
Group Leader



TECHNICAL SKILLS

- Project Management
- Site Inventory & Analysis
- Site Master Planning
- Presentation Graphics
- Construction Documents

REGISTRATION

- Registered Landscape Architect – OH, IL, WI
- CLARB Certified Landscape Architect
- CSI – Construction Documents Technologist

EDUCATION

B.S., Landscape Architecture,
1994, West Virginia University

PROFESSIONAL AFFILIATIONS

American Society of
Landscape Architects

TEAM HONORS & AWARDS

**Milwaukee Art Museum
Cudahy Gardens**
2002 Wisconsin ASLA
Presidents Award of
Excellence and 2002
Outstanding Civil Engineering
Achievement Award

SELECTED PROJECT EXPERIENCE

Mr. Mathews joined Floyd Browne Group in January 2005. He has a wide range of experience working on projects in the institutional, municipal, governmental, and commercial markets.

His range of experience includes site inventory and analysis, schematic site design and master planning, single family and multi-family residential and commercial development, campus master planning and streetscape planning and design. In addition, Mr. Mathews is experienced in preparing construction documents and providing construction administration services.

Mr. Mathews has the ability to generate high quality, hand rendered, presentation graphics that assist the client in understanding the design intent while providing a powerful tool for use in project marketing, to aid the client in obtaining project approvals from various regulatory agencies, and in building consensus with project stakeholders.

Mr. Mathews uses a team approach in project development, collaborating with the owner, the design team and stakeholders to create functional, aesthetically pleasing, and executable design solutions. This approach to project planning ensures that the final design is the very best it can be.

Recent projects include:

Old Akron Post Office & Long Term Acute Care Facility (LTAC) Development

– Project Manager providing site master planning and site design services for this \$30 million development on East Market Street in Downtown Akron that will restore the city's historic Main Post Office, one of Akron's most historic buildings, and will see construction of a long-term acute care facility to serve the Greater Akron community. This project was a collaborative effort between the two largest health care providers in Akron, Ohio; Summa Health System and Akron General Medical Center.

Warren City Schools – Project Manager providing design services for several Warren City School projects which include Warren G. Harding High School, Lincoln K-8 School, Parkman K-8 School, Willard K-8 School and the Jefferson K-8 School.

Akron Public Schools – Project Manager providing design services for several Akron Public School projects which include the Betty Jane Community Learning Center, Helen Arnold Community Learning Center, the Akron Urban League, Leggett Community Learning Center and Findley Community Learning Center.

Hudson High School Athletic Complex – Responsible for providing site design and master planning for the new high school athletic complex and maintenance facility.

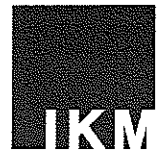
Accuracy of Drawings



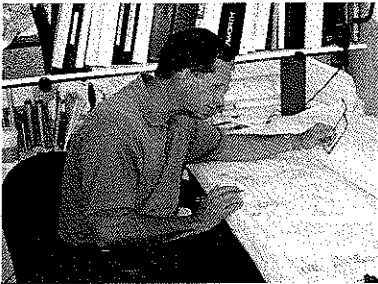
architecture
planning
interior design



Quality Assurance/Quality Control



architecture
planning
interior design



IKM outlines its QA/QC program as follows, consisting of the following activities and tasks:

We will carefully review all aspects of the existing documents before beginning the design within the built environment.

IKM makes it a point to emphasize to its staff that it is *the primary responsibility of each member of the project team to ensure quality control* in a project regardless of the scope and size of the project.

We have found that commitment to the finished product is higher when each member of the project team has a stake in quality control.



IKM underscores its commitment to quality control by its program of regular in-house seminars dealing with technical, design, and practice issues.

IKM assigns the primary responsibility of ensuring document coordination among IKM and its subconsultants to the Project Manager. The IKM Project Manager is the individual responsible for monitoring the work of the subconsultants from the beginning of design activity through construction administration – including all of the individuals of the subconsultant team. IKM holds periodic seminars on risk management for key staff (principals and project managers).

On projects of this size, IKM holds regular coordination meetings with its consultants for the purposes of ensuring that each discipline is interfacing properly and that all are progressing satisfactorily in their development of the documents.



To the extent that we are responsible for QA/QC in the field, it will be the role of the Project Manager during the Construction Administration phase to ensure that the construction of the project(s) is carried out based upon the architectural drawings.

In addition to the activities of the IKM Project Manager, IKM assigns a senior architect to serve as the IKM representative responsible for oversight of the firm's Quality Control program.

His/her role is to review all drawings and specifications including those of the subconsultants to look for and correct inconsistencies and document coordination matters, prior to their issuance.

IKM's document review procedure is based on **Redicheck Interdisciplinary Coordination**, a highly regarded and time-tested system of reviewing construction documents.



KEVIN LAWLOR

Executive Vice President &
Principal-in-Charge of Estimating

Kevin is Principal-in-Charge of all in-house estimating and systems support services. Additionally, he directs the coordination and preparation for value engineering services, constructability reviews, and adherence to contract documents on these elements. He brings over 33 years of design and construction phase experience to each project. During this period, he has provided cost estimates on over \$10 Billion of multi-use facility projects. Kevin has participated in numerous Value Engineering (VE) sessions, and has completed the 40-hour VE workshop that is a pre-requisite to becoming a certified Value Specialist.

Education

Bowling Green State University

Associations

American Society of Heating,
Refrigerating, and Air
Conditioning Engineers, Inc.
(ASHRAE)

American Society for Healthcare
Engineering (ASHE)

Construction Management
Association of America
(CMAA)

American Society of Professional
Estimators (ASPE)

Selected Project Experience

Healthcare

- Akron City Hospital, Akron, OH
- Akron General Medical Center,
Health & Wellness Center, Akron,
OH
- Alliance Hospital, Alliance, OH
- Barberton Citizen's Hospital,
Barberton, OH
- Bradford Regional Medical Center,
Bradford, PA
- Elyria Memorial Hospital, Elyria,
OH
- Fairview Hospital, Cleveland, OH
- Geauga Regional Hospital, Chardon,
OH
- Good Samaritan Hospital,
Cincinnati, OH
- Grant Riverside Hospital, Columbus,
OH
- Lake Hospital Systems, Mentor, OH
- Lakewood Hospitals, Lakewood, OH
- Lancaster General Hospital,
Lancaster, PA
- Latrobe Area Hospital, Latrobe, PA
- Lutheran Medical Center, Cleveland,
OH
- Medina Hospital, Medina, OH
- Memorial Hospital Center for Work
Performance, Fremont, OH
- Memorial Hospital of York, York,
PA
- Menorah Heights, Pittsburgh, PA
- Mercy Hospital, Willard, OH
- Mercy Medical Center, Canton, OH
- Meridia Hillcrest Hospital, Mayfield
Heights, OH
- Metro Health Hospital, Cleveland,
OH
- Ohio Valley General Hospital,
McKees Rocks, PA

- Parma Hospital, Parma, OH
- Salem Community Hospital, Surgery
Expansion, Salem, OH
- Shadeyside Hospital, Pittsburgh, PA
- Shamokin Community Area
Hospital, Coal Township, PA
- Southwest General Hospital,
Cleveland, OH
- St. Clairs Hospital, St. Clairs, PA
- Summa Orthopedic Hospital, Akron,
OH
- The Cleveland Clinic Foundation,
Cleveland, OH
- The Ohio State University Medical
Center, Columbus, OH
- The University of Pittsburgh Medical
Center, Pittsburgh, PA
- University Hospitals HealthSystem,
Cleveland, OH
- Veteran's Administration Medical
Center, Albuquerque, NM
- Veteran's Administration Medical
Center, City of West, TX
- Veteran's Administration Medical
Center, Phoenix, AZ
- Veteran's Administration Medical
Center, Tucson, AZ
- Wade Park VA Hospital, Cleveland,
OH

Institutional

- Cleveland Museum of Art,
Cleveland, OH
- Morley Library, Painesville, OH
- Mentor Library, Mentor, OH
- Mt. Lebanon Public Library,
Pittsburgh, PA
- St. Christopher's Church, Rocky
River, OH

Construction Phase Services



architecture
planning
interior design

During the construction phase of a project, IKM works hard to represent the interest of the Owner. Because we make a great investment in time and effort throughout the design phase and construction document phase, we provide a complete and thorough set of drawings and specifications for contractors' bidding purposes.

IKM Incorporated has been involved with the design, bidding and construction administration services for every project we have shown in this statement of qualifications. At IKM, we do not change teams when construction begins. We feel the most knowledgeable person on the project, the project manager, supported by the Principal-in-Charge should be involved throughout the construction and complete the post occupancy evaluation. It is also important to note that this same person will be responsible for the schedule and will be responsible for keeping the Contractor on schedule.

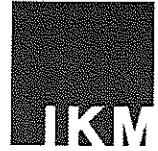
Since we interact with the client and end user throughout this process to create a design solution with you and carefully research and select the best materials that are suited to your project, we anticipate minimal changes to the design during construction. We will carefully monitor the progress to ensure the project is built as it was intended in the drawings.

All construction phase services listed in the AIA Document B141 Section 2.6 are provided as part of our fees. These include:

- Function as the Owner's agent;
- Represent and consult with Owner;
- Periodic site visits based on project demands, to observe construction and determine whether it is proceeding in accordance with the requirements of the contract documents and reject work that does not meet contract documents;
- Review Contractors applications for payment;
- Manage construction administration using the AIA documents;
- Respond to RFIs (Requests for Information);
- Provide interpretation and clarification of contract documents as required;
- Review shop drawings, product literature, material, samples;
- Attend construction progress meetings with Owner and Contractor;
- Issue supplemental instructions as required;
- Prepare change orders;
- Conduct inspections to determine dates of substantial completion; and,
- Punch list.

As an additional service, IKM has provided a Clerk of the Works as a full time representative on the site.

Permitting & Regulatory Approvals



architecture
planning
interior design

As the design professional, IKM is well versed in understanding the complex code requirements associated with health care construction. Our designs integrate these requirements from the concept stage to create successful solutions that are compliant with the respective codes.

We are familiar with the Department of Health review process and understand how to secure approvals for our projects with respect to the AIA Guidelines for Design and Construction of Hospitals and Health Care Facilities as well as IBC, IRC, and NFPA codes.

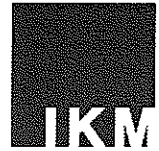
We have regular contact and an ongoing dialogue with **Norman Fetterman of the Fire Marshall's Office** and **Ronald Stricker of OHFLAC** (Office of Health Facility Licensure and Certification) for review of drawings at different stages of design.

We currently have several active projects in the state of West Virginia including the new **West Virginia University** Alumni Center, WVU White Hall renovations, and the **Martinsburg Medical Office Building**, as well as **several projects for West Virginia University Hospitals** including a Master Facility Plan of their more than 1 million square feet of space; the renovation of the 10th Floor CTU, Cardiac Holding, expansion and renovation of the Neonatal Intensive Care Unit, and the renovation of the Post Anesthesia Care Unit.

We have led many seminars on this subject and we keep our firm knowledgeable about changes and updates to the codes and standards.

IKM also works with the end user on project specific design codes or guidelines, e.g., AALAC for animal facilities, USP 707 for Pharmaceutical Compounding or the AAP Guidelines for Perinatal Care for NICUs.

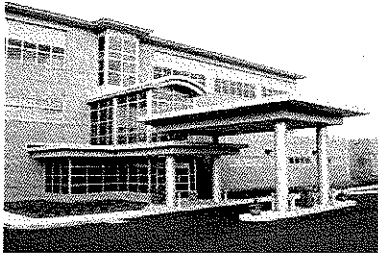
West Virginia Work



architecture

planning

interior design



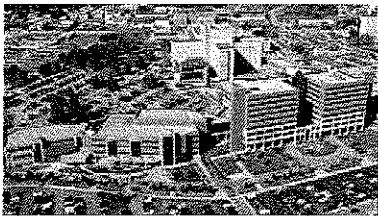
Concord University, Athens, West Virginia
Alumni Center and Interfaith Chapel

Martinsburg Projects, Martinsburg, West Virginia
Medical Office Building
Tristate Ambulatory Surgery Center

Monongalia General Hospital, Morgantown, West Virginia
Ambulatory Care Center
Medical Office Building
Surgery Department addition/renovation
Cardiac Post Anesthesia Care Unit

Putnam General Hospital, Hurricane, West Virginia
OR Renovation

United Hospital Center, Clarksburg, West Virginia
Medical Office Building programming



VA Medical Center Clarksburg, West Virginia
Master Facility Plan
Parapet Renovation
Patient Unit Renovation

West Virginia University Hospitals, Morgantown, West Virginia
Master Facility Plan
8th Floor Inpatient Bed Study
Cardiothoracic Unit renovation
Cardiac Holding renovation
Neonatal Intensive Care Unit
OR Corridor renovation
Parking Deck Study
Pediatric Unit Study
Post Anesthesia Care Unit



West Virginia University Alumni Association, Morgantown,
West Virginia
Erickson Alumni Center

West Virginia University, Morgantown, West Virginia
White Hall
Evansdale Library
Downtown Campus Parking Garage Feasibility Study
Evansdale Campus Parking Feasibility Study
Oblebay Hall Science Building Code Renovation
Roads & Grounds Feasibility Study
Coliseum Locker Room Renovation
White Hall Computer Center Addition





State of West Virginia
 Department of Administration
 Purchasing Division
 2019 Washington Street East
 Post Office Box 50130
 Charleston, WV 25305-0130

Request for Quotation

RFQ NUMBER
 WSH90086

PAGE
 1

ADDRESS CORRESPONDENCE TO ATTENTION OF
 ROBERTA WAGNER
 304-558-0067

VENDOR
 *720113012 412-281-1337
 IKM INCORPORATED
 ONE PPG PLACE
 PITTSBURGH PA 15222

SHIP TO
 HEALTH AND HUMAN RESOURCES
 WILLIAM R. SHARPE JR. HOSPITAL
 CENTRAL RECEIVING
 936 SHARPE HOSPITAL ROAD
 WESTON, WV 26452
 304-269-1210

DATE PRINTED	TERMS OF SALE	SHIP VIA	F.O.B.	FREIGHT TERMS
11/10/2008				

BID OPENING DATE: 12/04/2008 BID OPENING TIME 01:30PM

LINE	QUANTITY	UOP	CAT NO	ITEM NUMBER	UNIT PRICE	AMOUNT
ADDENDUM NO. 1 1. QUESTIONS AND ANSWERS ATTACHED. 2. ADDENDUM ACKNOWLEDGEMENT IS ATTACHED. THIS DOCUMENT SHOULD BE SIGNED AND RETURNED WITH YOUR BID. FAILURE TO SIGN AND RETURN MAY RESULT IN DISQUALIFICATION OF YOUR BID. EXHIBIT 10 REQUISITION NO.: WHS90086 ADDENDUM ACKNOWLEDGEMENT I HEREBY ACKNOWLEDGE RECEIPT OF THE FOLLOWING CHECKED ADDENDUM(S) AND HAVE MADE THE NECESSARY REVISIONS TO MY PROPOSAL, PLANS AND/OR SPECIFICATION, ETC. ADDENDUM NO. S: NO. 1 <i>MGW</i> NO. 2 <i>MGW</i> NO. 3 NO. 4 NO. 5 I UNDERSTAND THAT FAILURE TO CONFIRM THE RECEIPT OF THE ADDENDUM(S) MAY BE CAUSE FOR REJECTION OF BIDS.						

SEE REVERSE SIDE FOR TERMS AND CONDITIONS

SIGNATURE	TELEPHONE	DATE
TITLE	FEIN	ADDRESS CHANGES TO BE NOTED ABOVE

WHEN RESPONDING TO RFQ, INSERT NAME AND ADDRESS IN SPACE ABOVE LABELED 'VENDOR'



State of West Virginia
 Department of Administration
 Purchasing Division
 2019 Washington Street East
 Post Office Box 50130
 Charleston, WV 25305-0130

Request for Quotation

RFQ NUMBER
 WSH90086

PAGE
 2

ADDRESS CORRESPONDENCE TO ATTENTION OF
 ROBERTA WAGNER
 304-558-0067

*720113012 412-281-1337
 IKM INCORPORATED
 ONE PPG PLACE
 PITTSBURGH PA 15222

HEALTH AND HUMAN RESOURCES
 WILLIAM R. SHARPE JR. HOSPITAL
 CENTRAL RECEIVING
 936 SHARPE HOSPITAL ROAD
 WESTON, WV 26452
 304-269-1210

DATE PRINTED	TERMS OF SALE	SHIP VIA	F.O.B.	FREIGHT TERMS
11/10/2008				

BID OPENING DATE: 12/04/2008 BID OPENING TIME 01:30PM

LINE	QUANTITY	UOP	CAT. NO.	ITEM NUMBER	UNIT PRICE	AMOUNT
<p>VENDOR MUST CLEARLY UNDERSTAND THAT ANY VERBAL REPRESENTATION MADE OR ASSUMED TO BE MADE DURING ANY ORAL DISCUSSION HELD BETWEEN VENDOR'S REPRESENTATIVES AND ANY STATE PERSONNEL IS NOT BINDING. ONLY THE INFORMATION ISSUED IN WRITING AND ADDED TO THE SPECIFICATIONS BY AN OFFICIAL ADDENDUM IS BINDING.</p> <p><i>Mark A. White</i> SIGNATURE</p> <p><i>IKM Incorporated</i> COMPANY</p> <p><i>12/3/2008</i> DATE</p> <p>REV. 11/96</p> <p>END OF ADDENDUM NO. 1</p>						

SEE REVERSE SIDE FOR TERMS AND CONDITIONS		
SIGNATURE	TELEPHONE	DATE
FILE	FEIN	ADDRESS CHANGES TO BE NOTED ABOVE

WHEN RESPONDING TO RFQ, INSERT NAME AND ADDRESS IN SPACE ABOVE LABELED 'VENDOR'