



State of West Virginia  
 Department of Administration  
 Purchasing Division  
 2019 Washington Street East  
 Post Office Box 50130  
 Charleston, WV 25305-0130

# Request for Quotation

RFQ NUMBER  
 DEP14383

PAGE  
 1

ADDRESS CORRESPONDENCE TO ATTENTION OF  
 CHUCK BOWMAN  
 304-558-2157

RFQ COPY

TYPE NAME/ADDRESS HERE

THRASHER ENGINEERING, INC.  
 P. O. BOX 1532  
 CLARKSBURG, WV 26302-1532

ENVIRONMENTAL PROTECTION

DEPARTMENT OF  
 OFFICE OF AML&R  
 601 57TH STREET SE  
 CHARLESTON, WV  
 25304

304-926-0499

DATE PRINTED	TERMS OF SALE	SHIP VIA	P.O.B.	FREIGHT TERMS
09/04/2008				

BID OPENING DATE: 10/08/2008 BID OPENING TIME 01:30PM

LINE	QUANTITY	UOP	CAT NO.	ITEM NUMBER	UNIT PRICE	AMOUNT
0001	1	JB		906-94		
STANDARD/PAINT CK/COLLINSDALE WATERLINE DESIGN						
EXPRESSION OF INTEREST						
<p>THE WEST VIRGINIA PURCHASING DIVISION, FOR THE AGENCY, THE WEST VIRGINIA DEPARTMENT OF ENVIRONMENTAL PROTECTION, IS SOLICITING EXPRESSIONS OF INTEREST FOR PROFESSIONAL ENGINEERING DESIGN SERVICES AND CONSTRUCTION MONITORING SERVICES AT THE STANDARD/PAINT CREEK/COLLINSDALE WATERLINE EXTENSION PROJECT IN KANAWHA/FAYETTE COUNTIES, WV. PER THE FOLLOWING BID REQUIREMENTS AND THE ATTACHED SPECIFICATIONS.</p> <p>BANKRUPTCY: IN THE EVENT THE VENDOR/CONTRACTOR FILES FOR BANKRUPTCY PROTECTION, THIS CONTRACT IS AUTOMATICALLY NULL AND VOID AND IS TERMINATED WITHOUT FURTHER ORDER.</p>						

RECEIVED

2008 OCT -8 A 11: 22

PURCHASING DIVISION  
 STATE OF WV

SEE REVERSE SIDE FOR TERMS AND CONDITIONS

SIGNATURE *[Signature]* TELEPHONE 304-624-4108 DATE 10-7-08

TITLE Vice President FEIN 55-06335966 ADDRESS CHANGES TO BE NOTED ABOVE

WHEN RESPONDING TO RFQ, INSERT NAME AND ADDRESS IN SPACE ABOVE LABELED 'VENDOR'



30 Columbia Boulevard  
P.O. Box 1532  
Clarksburg, WV 26301

(304) 624•4108  
Fax: 624•7831  
thrasher@thrashereng.com  
www.thrashereng.com

October 7, 2008

West Virginia Department of Environmental Protection  
Office of Abandoned Mine Lands and Reclamation  
c/o State of West Virginia Department of Administration  
Purchasing Division  
2019 Washington Street, East  
Charleston, WV 25305

RE: Expression of Interest – Standard/ Paint Creek / Collinsdale Water Line Design  
*Requisition # DEP14383*

To Whom It May Concern:

Thrasher Engineering, Inc. is pleased to have the opportunity to submit this expression of interest and qualifications to provide engineering design services for the Standard / Paint Creek / Collinsdale AML Water Line Project. Our qualifications as West Virginia's largest full service civil engineering firm will provide the Department of Environmental Protection's Office of Abandoned Mine Lands and Reclamation with quality service in a timely and cost efficient manner.

Following our review of the project, we have developed a thorough understanding of the project needs. With that understanding, we offer the following qualifications that the selection of Thrasher Engineering for this project will bring to the DEP and the Office of Abandoned Mine Lands:

***Successful Project Experience with AML:*** In 2005, we were selected by the DEP to provide engineering design and mapping services for the Amherstdale and Ragland Road AML water line projects in Mingo and Logan Counties. As you are aware, each of these projects was completed on time and is currently at the DEP awaiting final steps prior to construction. Additionally we have extensive experience with water line projects in areas that are partially affected by AML; we currently are providing or have finished engineering services for partial AML projects including two for the Town of Masontown and one for the Town of Terra Alta in Preston County and the Norton / Harding / Jimtown Public Service District in Randolph County

**Project Team:** The qualifications of professionals on the team we have assembled to provide design services for this project are unmatched for this type of work. We have 25 engineers on staff, 14 of who are Registered Professional Engineers. Additionally, Thrasher Engineering offers 15 fully staffed survey crews with experience in water line replacement and extension projects.

**Location:** The project will be managed from our Charleston, West Virginia office which will allow for close proximity to both the site and the AML offices. This can bring both time and cost efficiencies to the project.

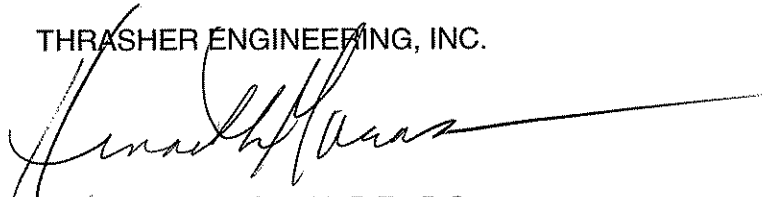
With our experience with AML and water line projects, our qualified personnel and our expertise, Thrasher Engineering is the right choice for this AML project.

Following the instructions outlined in the RFQ, this proposal contains information regarding Thrasher Engineering's history, qualifications and management and staffing capabilities along with the required DEP /AML Consultant's Confidential Qualifications Questionnaire, and an affidavit stating Thrasher Engineering has no debt owed to the State of West Virginia.

We thank you for your consideration of our qualifications and look forward to the opportunity to present our qualifications and project methodology to you in person.

Sincerely,

THRASHER ENGINEERING, INC.

A handwritten signature in black ink, appearing to read 'Kenneth P. Moran', written over a horizontal line.

KENNETH P. MORAN, P.E., P.S.  
Vice-President / Principal-In-Charge

# FIRM OVERVIEW

## THRASHER ENGINEERING, INC.

**Established** 1983

### **Officers**

H. Wood Thrasher, P.E.,	President
Kenneth P. Moran, P.E., P.S.	Vice-President
Kurt L. Newbrough, P.S.	Secretary /
Treasurer	



**Thrasher Engineering, Inc. Office –  
Clarksburg, WV**

### **Partners**

Wm. Randy Watson	Public Utilities
Chadwick Biller, P.E.	Highways / Airports
Chad Riley, P.E.	Site Development
Clay P. Riley, P.E.	Public Utilities
Daniel E. Ferrell, P.E.	Public Utilities

**Scope of Services** Site Development – Industrial/ Business / Commercial / Residential  
General Civil Engineering – Municipal Engineering / Subdivisions/ Paving  
Highway/ Roadways / Recreational Trails Design  
Public Work – Water / Sewer / Treatment Plants / Facility Plans / Business and Industrial Parks  
Environmental Engineering  
Architecture  
Landscape Architecture  
Land Surveying, Platting, Legal Description Preparation  
Construction Management / Materials Testing / Inspection  
GIS Mapping and Software Development

**Offices** 30 Columbia Boulevard, Clarksburg, WV  
300 Association Drive, Charleston, WV – Thrasher Environmental  
3000 Thayer Center, Oakland, MD  
Martinsburg, WV – The Berkeley Associates- Affiliate  
Princeton, WV – Pentree, Incorporated - Affiliate

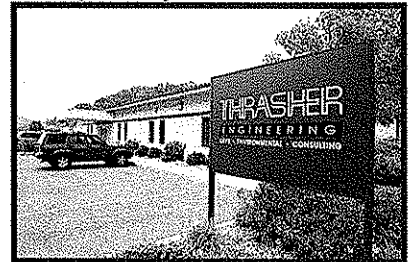
**Employees** 170 including:  
Registered Professional Engineers  
Registered Professional Surveyors  
Environmental Engineers  
Architects  
Landscape Architects  
Engineering Technicians /Project Designers / CADD Operators  
Construction Inspectors  
Surveyors  
Office Support

# STATEMENT OF QUALIFICATIONS

## HISTORY

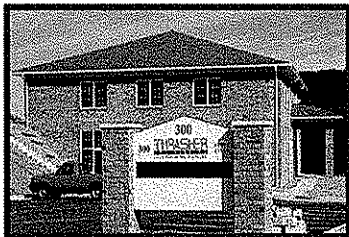
Thrasher Engineering, Inc. is a civil engineering consulting firm specializing in public works projects. The majority of Thrasher Engineering's work involves publicly funded water treatment and distribution systems, sewage collection and treatment systems, industrial and business parks and transportation engineering including airports, roadways and bridges. Architecture was added to our services in 2004.

H. Wood Thrasher and Henry A. Thrasher formed the company in 1983 with a commitment to excellence and professionalism in engineering. **H. Wood Thrasher, P.E.** remains principal of the company; also serving as principals are **Kenneth P. Moran, P.E.**, **Wm. Randy Watson** and **Kurt L. Newbrough, P.S.**



*Thrasher Engineering, Inc. Office – Clarksburg, WV*

Thrasher Engineering is a part of Resource Engineering Group, Inc., a holding company of five of West Virginia's leading engineering and architectural firms. Thrasher Engineering is based in **Clarksburg, West Virginia** with a branch office in **Oakland, MD**.

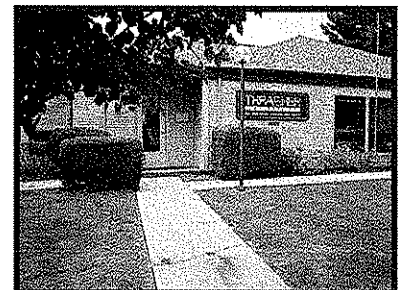


*Thrasher Environmental Office – Clarksburg, WV*

The Oakland office was opened in early 2004 to serve customers in the eastern portion of West Virginia and the western portion of Maryland. **Thrasher Environmental** is located in **Charleston, WV**. **The Berkeley Associates**, located in **Martinsburg, West Virginia**, allows Thrasher Engineering an additional location from which to serve clients in the Eastern Panhandle of West Virginia. **Pentree, Incorporated**, also a civil engineering firm, is located in Princeton, West Virginia.

## FIRM SIZE

Since its formation the company has grown to a firm of over 170 persons. This staff includes twenty-five engineers, fifteen of whom are registered professional engineers. The Survey Department of this company includes registered professional surveyors. The Thrasher Engineering team also includes engineer technicians, project designers, CADD operators, construction inspectors and the administrative / office support team.



*Thrasher Engineering, Inc. Office – Oakland, MD*

## **SERVICES**

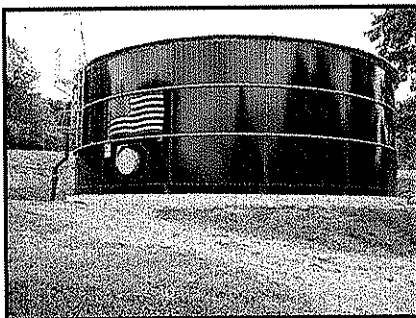
Thrasher Engineering offers the full complement of services necessary to serve the West Virginia Department of Environmental Protection / Office of Abandoned Mine Lands and Reclamation (AML) for the replacement of water lines in the Standard / Pain Creek and Collinsdale service area. We provide our high quality of engineering study and design, along with survey and field services to municipalities and other government entities, public service districts, and private clients. The majority of work involves water treatment and distribution systems, sewage collection and treatment systems, industrial and business parks, site development, highways, bridges and airports, along with environmental engineering. Thrasher Engineering's Field Services Division provides surveying services, construction management and inspection along with materials testing. We are also one of the few full service engineering firms in the state to offer GIS Mapping services for public utilities.

The services we offer that relate directly to the WV DEP / AML's current Request for Qualifications include:

### **CIVIL ENGINEERING**

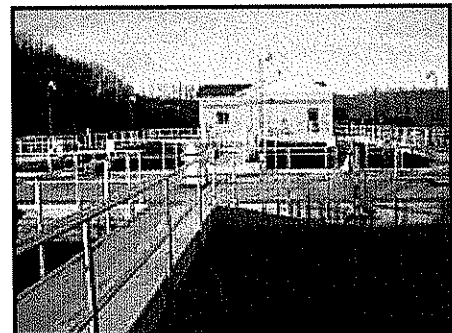
#### **WATER TREATMENT AND DISTRIBUTION**

From water treatment plants, to storage and distribution systems, we are an industry leader in financing, procedures, and regulatory agency involvement.



Services for water projects include:

- Feasibility Studies
- Rate Case Studies
- Water Treatment Plants
- Distribution Systems
- Pumping Stations
- Water Source Identification and Evaluation



No matter how big or small a water system project is Thrasher Engineering's staff will be involved in all aspects. Our procedural knowledge, technical expertise and the necessary technology we possess make your project a success.

## **ENVIRONMENTAL SERVICES**

Thrasher Engineering has extensive direct experience in all aspects of environmental assessment and remediation. As a result, the staff can manage your project locally and draw upon the expertise required for efficient, cost effective implementation. This approach allows both the local access and control clients require, plus the technical expertise necessary to meet the needs in the increasingly complex area of state and federal environmental regulation.

## **FIELD SERVICES**

### **SURVEY**

Thrasher Engineering's Land Surveying Department performs a wide range of services, not only in conjunction with Thrasher Engineering projects, but independently for both public and private clients. Fifteen survey crews, which include staff members with Professional Surveyor certifications, conduct surveys for a wide variety of projects, including:

- Pre and post mine subsidence surveys
- GPS ground control surveys for aerial mapping
- Right-of-way surveying.
- Landfill closure surveys
- Topographic surveys
- Construction layout for site development projects, highways, railroads, sanitary sewer systems and wastewater treatment plants
- Lake and river sounding surveys
- Boundary surveys
- ALTA/ACSM surveys
- Pre and post blasting surveys
- West Virginia Department of Transportation Division of Highways surveys



Thrasher Engineering's survey crews are equipped with the latest in conventional and GPS survey equipment. Including Leica Real Time GPS systems, Leica electronic total stations and TopCon Total Stations

The survey crews and office support staff can easily provide generated field data in virtually any digital format referenced to specified projection systems. The field crews are all equipped with late model four-wheel drive vehicles stocked with the most modern equipment available to perform professional land surveying services.

## CONSTRUCTION MANAGEMENT

Thrasher Engineering knows how projects are built. We provide the knowledgeable and experienced personnel necessary to manage the construction phase of any project.

Project managers and inspectors are experienced in all types of construction activities. From utilities, site development and storm water management to roads, bridges and airports, they apply construction management and inspection expertise to ensure successful projects. Both construction managers and inspectors have years of experience; many of whom are certified by the West Virginia Department of Transportation / Division of Highways



***Thrasher Engineering's Inspectors keep digital photo logs as a component of inspection oversight.***

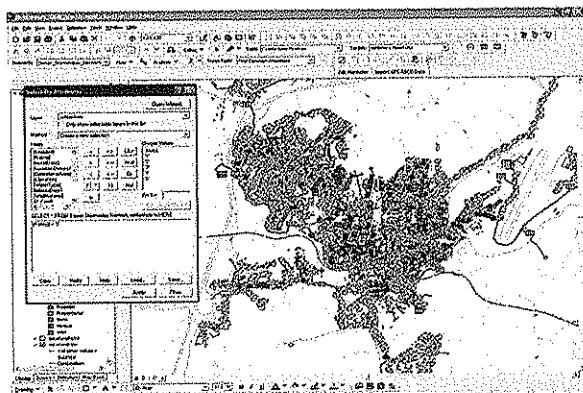
Construction Management Services include:

- Site Layout
- Construction Stakeout
- Inspection
- Quality Control
- Project Administration

## GIS MAPPING

Thrasher Engineering is one of the first full-service engineering firms in the State of West Virginia offering complete GIS services to county and municipal governments, along with public utilities departments and districts.

GIS Mapping services, including survey, field verification and the development of computer software to meet the specific needs of clients is provided for numerous applications, including:



- Water and Sanitary Sewer Systems including the field identification and verification of sanitary sewer lines, pump stations, lift stations, manholes and storm water systems
- E-911 Master Street Addressing and Data Bases
- Zoning and Boundaries
- Tax Mapping



# MANAGEMENT AND STAFFING

## STAFF CAPACITY

Thrasher Engineering offers the largest engineering staff in the State of West Virginia. The expertise of the Thrasher Engineering staff is a combination of education and experience; it is reflected in all aspects of our services. The firm is led by a talented group of principals and partners who are dedicated to the success of our projects and the satisfaction of our clients.

### FIRM OFFICERS AND PARTNERS

H. Wood Thrasher, P.E. - President  
Kenneth P. Moran, P.E. - Vice-President  
Kurt L. Newbrough, P.S.  
Wm. Randy Watson  
Chadwick Biller, P.E.

Administration  
Public Utilities  
Survey  
Public Utilities  
Site Development / Highways  
/Airports  
Site Development  
Public Utilities  
Public Utilities

Chad Riley, P.E.  
Clay P. Riley, P.E.  
Daniel E. Ferrell, P.E.

### STAFFING

Civil Engineers – (15 with P.E. Certification)  
Environmental Engineers  
Electrical Engineer  
Construction Managers / Inspectors  
CADD Operators  
Surveyors (4 with P.S. Certification)  
Administration and Support Personnel

## PROJECT TEAM

Thrasher Engineering has assigned team of talented and experienced engineering professionals to provide the highest quality of engineering and construction management services to the WV DEP.

**Kenneth P. Moran, P.E., P.S., Vice President** and Chief Engineer will oversee the project. In the capacity of Principal-In-Charge, Ken will work closely with the project team to ensure timeliness of the projects, client satisfaction and oversee budgetary aspects. He has 25 years of experience with specialization in public utility projects.

**Jonathan Carpenter, P. E.** will oversee the project and serves as the main contact with the DEP / AML office. Particular focus will be overall management of design and construction of the project. Mr. Carpenter, a Partner in Thrasher Environmental has extensive management and design experience in water treatment and distribution projects and served in this capacity of the recent Amherstdale and Ragland Road AML projects. His client list also includes Mingo County Public Service District and the City of Weirton.

Working with Mr. Carpenter will be **Matt Fluharty, P.E.**, and **Tom Urquhart, P.E., BCEE**. Mr. Fluharty will serve as **Project Engineer**. He specializes in the design and management of water distribution projects, including new systems, replacements, upgrades and extensions. Mr. Urquhart, a **Consulting Engineering** with the firm, is responsible for quality control, including all hydraulic modeling for water distribution systems. Prior to joining Thrasher Engineering, Mr. Urquhart served as General Manager and Chief Engineer for the Morgantown Utility Board for 33 years.

All survey work will be performed under the guidance of **Kurt Newbrough, P.S.** Mr. Newbrough is responsible for the assignment and supervision of his 15 fully staffed and equipped survey teams. In addition to mapping and survey, they will also be responsible for construction stakeout.

Construction Management and Inspection will be performed by **Ron Sheets**. Mr. Sheets recently joined Thrasher Environmental in the position of Construction Manager. His 30 years of experience, along with his engineering expertise will be an asset to the DEP project. Ron has extensive experience in project management, inspection and work crew / subcontractor supervision.

Resumes for these project team members follow.

**Kenneth P. Moran, P.E., P.S.**  
**Vice-President / Principal-in-Charge / Chief Engineer**

**SUMMARY OF EXPERIENCE**

**Mr. Moran joined Thrasher Engineering in 1991 and currently serves as Vice President and Chief Operations Officer and Chief Engineer. He is responsible for management feasibility studies and design of public utility and site development projects for local state, federal and private clients. Additionally, Mr. Moran has extensive experience in all aspects of engineering and with funding and regulatory agencies in conjunction with projects.**

**EDUCATION**

- ❑ **B.S., Civil Engineering Technology, 1983 – Fairmont State University**

**CERTIFICATIONS**

- ❑ **Registered Professional Engineer (PE), State of West Virginia #11309**
- ❑ **Registered Professional Engineer (PE), State of Virginia#0102021855**
- ❑ **Registered Professional Engineer (PE), State of Ohio #64412**
- ❑ **Professional Land Surveyor (PS), State of West Virginia#1333**

**REPRESENTATIVE PROJECT EXPERIENCE**

- ❑ **Preston EDA, Chief Engineer for Water Extension to Prison and Project Manager.**  
This project entailed the design of an eight (8) mile water distribution system to provide service to the Hazelton Federal Bureau of Prisons. This system included development of well fields for water supply and a new water treatment facility, multiple booster stations, and a 1 million gallon elevated storage tank.
- ❑ **Preston EDA, Chief Engineer for Park Utilities at Northpointe Industrial Park – Chief Engineer.** Mr. Moran designed the water, storm sewer, sanitary sewer improvements for a new Industrial Park. This Industrial Park is located in the Hazelton area in Preston County. He also designed a 50,000 gpd Sanitary Sewer Treatment Facility to serve the park.
- ❑ **City of Belmont, Sanitary Sewer Project – Project Manager and Project Engineer.**  
Mr. Moran was involved in the Wastewater Treatment Plant Expansion and inflow filtration improvements. Mr. Moran negotiated with the West Virginia Department of Environmental Protection for the removal of the sludge blanket for French Creek. Improvements for the Plant included designs for new clarifiers, sludge thickening, sludge processing and the relocation of the outfall to the Ohio River.
- ❑ **Brooke County PSD, Sanitary Sewer Project – Principle in Charge and Chief Engineer.** The project entailed planning and design, new sanitary sewer collection systems in and around Wellsburg and Follansbee. The project negotiations with the West Virginia Department of Environmental Protection and various municipalities to determine the sanitary sewer treatment provider.

- ❑ **Town of Tunnelton Sanitary Sewer Project - Project Manager and Project Engineer.** Mr. Moran designed a sanitary sewer collection system for the Town of Tunnelton and a new 40,000 gallons per day (gpd) Wastewater Treatment Plant.
- ❑ **Greater Harrison County PSD, Sanitary Sewer Project** –Project Manager and Project Engineer. This project included Wastewater Collection System Extensions in the areas of Lost Creek, Good Hope and Mount Clare. We were involved in the upgrade of the existing West Milford Wastewater Treatment Facility from 300,000 gpd to 600,000 gpd. The improvements included a new pre system upgrade of the aeration system and disinfection systems.
- ❑ **Huttonsville PSD, WWTP, Sanitary Sewer, Collection System, Extensions** - Project Manager. The inflow filtration improvement project removed and replaced the gravity part collection system in the areas of Valley Bin, Daley and East Daly in Randolph County. The project included upgrading the District's existing Wastewater Treatment Facility. The improvements included head works facility, aeration system, filtering system improvements and disinfection system improvements.
- ❑ **Pea Ridge PSD, WWTP, Sanitary Sewer, Collection System, Extensions – Project Manager.** This project included extensions in the existing system, inflow infiltration collection system improvements, upgrades of two (2) Wastewater Treatment Facilities, and abandonment of an existing lagoon system which was converted to a wetlands.
- ❑ **Scott's Run PSD, Sanitary Sewer, Collection System Extensions – Project Manager.** Mr. Moran was involved in the extension of a new gravity sewer collection system in the areas of Osage, Cassville, Wade's Run, Chaplin Hill of Monongalia County. The project removed the existing Wastewater Treatment Facility in the area of New Hill. The project negotiations with the Morgantown Utility Board for the wastewater treatment, operation and maintenance and system boundary.
- ❑ **Canaan Valley Public Service District Waste Water Treatment System – Project Manager.** This project entailed analyzing the Canaan Valley area for implementation of a public sanitary sewer system. There were multiple tasks involved with this project from working with the Environmental Protection Agency and the West Virginia Department of Environmental Protection with regards to the TMDL on the Blackwater River. The project solution provided a managed stream point discharge solution for the Valley.
- ❑ **Pocahontas County PSD, WWTP, Sanitary Sewer, Collection System, Extensions – Project Manager.** The project involved designing a new sanitary sewer collection and treatment system to serve the areas of Snowshoe, Linwood, and Slatyfork of Pocahontas County. The project involved multiple alternative analyses due to the varied environmental and social interest of the county.
- ❑ **City of Bridgeport, Sanitary Sewer Lift Station Improvements, WWTP Upgrades –** Project Engineer, Project Manager and Principal in Charge. Mr. Moran has managed multiple projects for the City of Bridgeport for over 17 years. He has designed multiple pumps station and collection system for the City of Bridgeport. He also designed the City's 2.5 million gpd Wastewater Treatment Facility and has worked with the City of Bridgeport to establish their GIS and Long Term Control Plan solutions.

**Jonathan Carpenter, P.E.**  
**Managing Partner / Project Manager**

**SUMMARY OF EXPERIENCE**

Mr. Carpenter joined Thrasher Environmental in 1998 as a Project Engineer and Project Engineer. In 2006, he was named Managing Partner of Thrasher Environmental. Mr. Carpenter is responsible for managing all aspects of water and wastewater projects for municipalities and public utilities, in addition to overseeing environmental services and GIS Mapping departments of the company/

**PROJECT EXPERIENCE**

**Water Distribution Projects**

- WVDEP-AML Amherstdale WTP Upgrade and Ragland Water Line Extension
- Union-Williams PSD, Hydraulic Modeling, WTP and Distribution Upgrade
- Craigsville PSD, WTP Upgrade, Water Line Extension and Water Storage Tanks
- Mingo County PSD, WTP, Water Distribution System, Water Tanks, Booster Station
- Town of Bath, WTP Upgrade
- City of Mannington, WTP
- Green Spring Valley PSD, WTP Upgrade, Water Distribution Line Extension, Water Tank Replacement
- City of Weirton, WTP Sludge Handling Facility and Elevated Water Storage Tank
- Town of Rowlesburg Water Treatment Plant Upgrade, Project Manager

**Sanitary Sewer Projects**

- Berkeley County PSSD, Baker Heights WWTP Upgrade
- Berkeley County PSSD Inwood WWTP Upgrade
- City of Milton Water System Improvements Project
- Union PSD, 40th Street WWTP upgrade and Big & Little Tyler Sewer Line Extension
- Mingo County PSD, Chattaroy Lift Station and Collection System Improvements, East Kermit Collection System and WWTP, Delorme Collection System, and Shady Woods WWTP
- Union-Williams PSD, Construction Management and Right of Way Acquisition
- Canaan Valley Ski Base Lodge, WWTP Upgrade
- Craigsville PSD, I&I Improvements and WWTP Upgrade
- City of Weirton WWTP Upgrade and Sludge Handling Facility
- West Dunbar PSD, Sewer Line Extension
- Sissonville PSD, Project Manager/Engineer for WWTP Upgrade and I&I Study
- Pea Ridge PSD, Construction Management and Project Manager
- Green Spring Valley PSD, New WWTP
- Eastern Associated Coal, Acid Mine Drainage Treatment Plant
- Glady Fork Coal Company, Acid Mine Drainage Treatment Plant

**EDUCATION:**

- B.S., Civil Engineering, 1997 – University of Tennessee

**REGISTRATIONS:**

- Registered Professional Engineer (PE), State of West Virginia, 15425
- Registered Professional Engineer (PE), State of Maryland, 32075
- Registered Professional Engineer (PE) State of Tennessee

**AFFILIATIONS:**

- American Society of Civil Engineers
- American Water Works Association – Board Member, Third Trustee

**Matthew W. Fluharty, P.E.**  
**Project Engineer**

**SUMMARY OF EXPERIENCE**

Mr. Fluharty joined Thrasher Engineering in 2000 and serves as Project Manager for Water and Wastewater Projects. Mr. Fluharty is responsible for the development of public water and wastewater system feasibility studies and subsequent design work for private, state and federally funded projects. Additionally, Mr. Fluharty oversees project acquisition, project funding applications, engineering design and construction management on public utilities projects.

**Specialties Include:**

- Funding Applications:** Developing preliminary engineering reports and determining the best source of public/private funding scenarios to suit the applicant.
- Utility Design:** Primary force on water projects including distribution system replacements and extensions including pump stations, storage facilities, raw water intakes, ground water acquisition and evaluations. Other duties include existing water treatment plant additions/retrofitting. Sanitary sewer extension designs including pump stations and force mains.
- Construction Management:** Overseeing construction projects from the preconstruction conference to the final inspection. Duties involve reviewing contractor pay requisitions, change orders, attending monthly progress meetings, and managing the project budget.

**EDUCATION**

- B.S. Civil Engineering, 2000 – West Virginia University*

**CERTIFICATIONS**

- Registered Professional Engineer – State of West Virginia #16375*
- Registered Professional Engineer – State of Maryland #33491*
- Registered Professional Engineer – State of Pennsylvania #PE076002*
- WVDOH Certified Compaction Technician*
- WVDOH Certified Concrete Inspector/Technician*
- WVDOH Aggregate Sampling Inspector*
- Basic Safety – Compaction Gauge, 2000*

**REPRESENTATIVE PROJECT EXPERIENCE**

**Water System Projects**

- Town of Tunnelton (2008): Project Manager for water distribution extension to Rowlesburg where Tunnelton will purchase all of their water from Rowlesburg. Project involves 5 miles of water line, two (2) 150 GPM booster pump stations, a 70,000 gallon water storage tank, a solenoid operated control valve station, and a satellite telemetering system. Total project cost of \$1,825,000.*

- ❑ **City of Kingwood (2008): Project Manager for a water distribution replacement and improvement project. Project involves the replacement of an existing water storage tank with a new 1,200,000 gallon water storage tank, the replacement of 11,000 LF of existing water lines, and improvements to the water treatment plant. Total project cost of \$3,800,000.**
- ❑ **Short Line PSD (2008): Project Manager for water tank replacement project. This project involves the replacement of an existing water tank with a new 300,000 gallon water storage tank. Total project cost of \$600,000.**
- ❑ **Short Line PSD (2008): Project Manager for the cleaning and repainting of two (2) existing 100,000 gallon welded steel water storage tanks. Total project cost of \$125,000.**
- ❑ **Gilmer County PSD - ST RT5 (2008): Project Manager for a water distribution extension involving 19 miles of water line to serve 115 new customers. Project extends water service along ST RT 5, Rosedale Road, Gluck Run, Joes Run, and Duskcamp Run. Total project cost of \$2,884,200.**
- ❑ **City of Kingwood – Whetsell Settlement (2007): Project Manager for a water distribution extension involving 3 miles of water line to serve 40 new customers. Project provided water service to the Whetsell Settlement area located along the Cheat River. Total project cost of \$575,000.**
- ❑ **Masontown Water Works (2007): Project Manager for a water distribution extension involving 3 miles of 8” water line to connect Masontown system to Morgantown Utility Board system. Project involved a 200 GPM booster pump station, a solenoid operated control valve station, and a four-unit telemetering system. Project connected the two systems along Snake Hill Road. Total project cost of \$1,451,000.**
- ❑ **Lewis County EDA – Southern Lewis County (2006-2007:)Project Manager for a water distribution extension involving approximately 42 miles of water line to serve 400 new customers. Project involved two (2) new 100,000 gallon glass-lined bolted steel water tanks and a 200 GPM booster pump station. Project provided water service along Georgetown Road to US RT 119 and served the communities of Walkersville, Ireland, Duffy, and Vandalia. Total project cost of \$6,879,000.**
- ❑ **Raleigh County PSD – Clear Creek Project (2005): Project Engineer for a water distribution extension involving approximately 20 miles of water line to serve 310 new customers. Project involved two (2) new glass-lined bolted water tanks a 75,000 gallon and a 150,000 gallon, a 150 GPM water booster pump station, a solenoid operated control valve station, pressure reducing valve station, and a four-unit telemetering system. Project extended water service to the areas of Spruce Mountain along Rt. 1 to the communities of Clear Creek, Workman’s Creek, McDowell, Toney Fork, Buffalo Fork, Artie, and White Oak. Total project cost of \$1,000,000.**
- ❑ **Raleigh County PSD – Montcoal Project (2005): Project Engineer for a water distribution extension involving approximately 6 miles of water line to serve 125 new customers. Project extended water service from Montcoal north along Route 3 to Jarrolds Valley. Total project cost of \$1,000,000.**

- ❑ ***Gilmer County PSD (2004-2005): Project Engineer for a water distribution extension involving approximately 23 miles of water line to serve 150 new customers. Project involved a 150 GPM booster pump station, two (2) 50,000 gallon water storage tanks, and a two-unit telemetering system. This project served the areas along RT33 to Normantown and Stumptown in Gilmer County. Total project cost of \$3,400,000***
- ❑ ***Jane Lew PSD (2004): Project Engineer for water distribution extension involving approximately 11 miles of water line to serve 80 new customers. Project provides water service to the areas along Jesse Run and Sycamore Run. Project also involved the cleaning and painting of a 500,000 gallon welded steel water storage tank. Total project cost of \$3,500,000.***
- ❑ ***Haymond PSD (2004): Project Engineer for water distribution extension involving approximately 13 miles of water line to serve 70 new customers. Project included two (2) 50 GPM constant pressure booster pump stations. Project served the areas of Cherry Run, Camp Towles, Victoria, and Wilson Ridge. Total project cost of \$1,600,000.***
- ❑ ***Lewis County EDA – Freemansburg (2003): Project Engineer for a water distribution extension involving approximately 30 miles of water line to serve 300 new customers. Project involved a new 100,000 gallon welded steel water tank and a 100 GPM package water booster pump station. The areas served were Freemansburg, McCann Run, Kliens Run, Jennings Run, Aberdeen, Middle Run, and Herdman Run. Total project cost of \$3,600,000.***
- ❑ ***Hodgesville PSD (2003): Project Engineer for a water distribution extension involving approximately 30 miles of water line to serve 250 new customers. Project involved a new 240,000 gallon welded steel water tank and a 250 GPM package water booster pump station. The areas served were to the north of Buckhannon, WV. Total project cost of \$3,500,000.***



**Thomas E. Urquhart, P.E., BCEE**  
**Consulting Engineer/Quality Control**

**SUMMARY OF EXPERIENCE**

*Mr. Urquhart joined Thrasher Engineering in 1996 and serves as Consultant for the firm. Mr. Urquhart is experienced in civil engineering of public utilities including design and construction of water storage tanks, new and replacement water and sanitary sewer lines, pump stations and water treatment and wastewater treatment plants. Mr. Urquhart previously served as General Manager/Engineering for the Morgantown (WV) Utility Board.*

**EDUCATION**

- M.S. Civil Engineering – West Virginia University*
- B.S. Civil Engineering – West Virginia University*

**CERTIFICATIONS**

- Registered Professional Engineer (PE) – State of West Virginia #05262*
- Registered Professional Engineer (PE) – State of Pennsylvania #PE014449E*
- Registered Professional Engineer (PE) – State of Ohio #64320*
- Registered Professional Engineer (PE) – State of Maryland #30289*
- Certified Master Modeler by Heastad Methods for Water Systems, 2002*

**REPRESENTATIVE PROJECT EXPERIENCE**

- Pocahontas County PSD Hydraulic Modeling for County-Wide Water System*
- City of Bridgeport/Charles Pointe, Used Computer Hydraulic Model to design wastewater pumps at four locations pumping into common force main*
- City of Weston, Used Computer Hydraulic Model to design wastewater pumps at four locations pumping into common force main*
- Mingo County PSD, Used Existing Computer Hydraulic Model used to design extension out of Ragland*
- Timberline Four Seasons Resort, Complete Computer Hydraulic Model prepared to evaluate existing water system and design improvements for projected growth City of Milton, Complete Computer Hydraulic Model prepared leading to elimination of troublesome booster station, solving pressure problems in two sections of town, design of two major extensions to the water system and providing alternatives for getting fire flows to a new school and assisted living facility*
- City of Parsons Design of Improvements to Water Filters*
- Town of Rowlesburg, Used Computer Model of Water System to Design of High Service Pumps*
- Fairmont State University, Computer Hydraulic Model of Existing Water System and Design Improvements to Provide Fire Protection*
- City of Weirton, Complete Hydraulic Model and Study for New Tank, Pump Station, and Elevated Tank*
- City of Tunnelton, Used Computer Hydraulic Model to design connection to Taylor County PSD water system*
- Raleigh County Airport Industrial Park, Used Computer Hydraulic Model to design water system to provide maximum fire flows from Beckley water system*

- ❑ ***Sun Valley PSD, Complete Computer Hydraulic Model prepared to design system improvements including providing water to the City of Salem***
- ❑ ***Various Subdivisions in Hardy and Berkeley County; Computer Hydraulic Model and Analysis Reports***
- ❑ ***Greater Harrison County PSD, Existing Computer Hydraulic Model used to design improvements to provide more water to Lost Creek area***
- ❑ ***Glenville Prison, Water System Design, Computer Hydraulic Model***
- ❑ ***Canaan Prison, Water System Design, Computer Hydraulic Model***
- ❑ ***McDowell Prison, Water System Design, Computer Hydraulic Model***
- ❑ ***River Road PSD, Used existing Computer Hydraulic Model to answer question about their systems ability to serve proposed housing subdivisions***
- ❑ ***Craigsville PSD, Complete Computer Hydraulic Model prepared to examine several alternatives for constructing new water plant and feeding water from Summersville***

**Kurt Newbrough, P.S.**  
**Survey Supervisor, Principal**

**SUMMARY OF EXPERIENCE**

*Mr. Newbrough joined Thrasher Engineering in 1990 and is Principal and Partner in the firm. Mr. Newbrough serves as Survey Supervisor and is responsible for assignment and review of all survey activities. Mr. Newbrough has extensive experience in all aspects of surveys, including but not limited to boundary and easement surveys and the preparation of plats and legal descriptions. Mr. Newbrough also performs courthouse research, computes field data for construction layout, and processes GPS raw data for both public and private clientele in conjunction with Thrasher Engineering projects as well as separate contracts. He also serves in the elected position of Harrison County (WV) Surveyor.*

**EDUCATION:**

- *Surveying – John Tyler Community College, Chester, VA*
- *United Career Center, Clarksburg, WV*

**REGISTRATIONS:**

- *Professional Land Surveyor (PS), West Virginia #1618 - 1995*
- *OSHA Hazardous Waste Operations and Emergency Response Center 29 CFR 1910.120*
- *US Department of Labor/Mine Safety and Health Administration*

**AFFILIATIONS:**

- *West Virginia Association of Land Surveyors*
- *American Congress on Surveying and Mapping*
- *Member Strathmore's Who's Who*

**PROJECT EXPERIENCE**

**Boundary Surveys**

- *North and South Levee Areas for the Town of Moorefield*
- *Flood Control for the US Army Corps of Engineers*
- *FBI Fingerprint Identification Complex for the US Department of Justice*
- *Hardy County Rural Development Authority*
- *USARC sites for the US Army Corps of Engineers*
- *Private Surveys*

**Topographic Surveys**

- *West Virginia Division of Transportation, Department of Highways*
- *Harrison County Board of Education*
- *Gandee and Partners for Huntington Summit High School*
- *William A. Bruce, AIA for Food Lion Stores*

**Construction Layout**

- *Harman Construction, Inc.*
- *Calvert Excavating and Paving, Inc.*
- *Howard Concrete*
- *Dodd Corporation*
- *Mid Atlantic Storage Systems, Inc.*

**GPS Surveys**

- *US Army Corps of Engineers, Baltimore Dist*
- *Benatech Associates*
- *IDG, Inc.*
- *Carter Van Dyke Associates*

**Roland E. "Ron" Sheets**  
**Construction Manager / Inspector**

**SUMMARY OF EXPERIENCE**

Mr. Sheets recently joined Thrasher Environmental, bringing over 30 years of experience of demonstrated success as an Engineer, Estimator and Manager in the construction industry including public utilities projects. He has supervised all areas of construction activities, including estimating, preparing bids, developing proposals and overseeing work crews and sub-contractors.

**SELECTED PREVIOUS EXPERIENCE – Project Management**

- **Pea Ridge Public Service District – Sanitary Sewer Treatment System**
- **Construction Manager for \$5.8 Million renovation project for the US Army Reserve in Ripley, WV**
- **Construction Inspector for \$6.8 Million upgrade project for Hurricane, WV Wastewater Treatment Plant**
- **Project Manager for Phase II Renovation of Charleston Job Corps, Renovation II for Rose City Press**
- **Project Engineer for DMk2 System purchased from the British Navy**

**EDUCATION**

- **West Virginia University Graduate School – 12 Hours – Mechanical Engineering**
- **West Virginia University, Bachelor of Science, Mechanical Engineering**
- **United States Marine Corp, E-4**

**AFFILIATIONS**

- **National Association of Certified Housing Inspectors**

## ***RELATED EXPERIENCE***

No other West Virginia engineering firm has evaluated, designed and provided construction management services for more water treatment and distribution projects than Thrasher Engineering. We have provided environmental services for each of our projects, as well. As the majority of our clients are public service districts and small municipalities, we have broad experience in rural areas on projects with severe water quality issues. Many of these were directly caused by abandoned mine lands.

The following pages contain examples of specific projects that represent our abilities in water system extensions, including those under the AML program and numerous water treatment and throughout the State

Thrasher Engineering's representative projects include:

### ***AML RELATED PROJECTS***

- DEP AML Amherstdale Water Project- Logan County**
- DEP AML Ragland Water Line- Mingo County**
- Norton Harding Jimtown PSD Water Line Extension – Randolph County**
- Town of Masontown**

### ***ADDITIONAL EXTENSION PROJECTS***

- Lewis County Commission / Lewis County EDA**
- Chestnut Ridge Public Service District**
- Hamrick Public Service District**
- Hodgesville Public Service District**
- Gilmer County Public Service District**
- Greater Harrison Public Service District**
- Hardy County Public Service District**



The information provided about these representative projects displays not only the scope of our work, but our ability to estimate construction costs and prepare bid documents that result in numerous bidders with bids that match or are below the estimate.

## AML PROJECTS

---

### DEP ABANDONED MINE LANDS – RAGLAND (MINGO COUNTY) WATER LINE EXTENSION PROJECT

---

**Client/Contact:**

WV DEP  
Office of Abandoned Mine  
Lands and Reclamation  
601 57<sup>th</sup> Street, SE  
Charleston, WV 25304  
304-926-0485

Mingo County Public Service  
District, JB Heflin, Manager and  
Robert Adams, Chairman  
304-235-2244 ph.  
304-235-8115 fax

**Project Location:**

Mingo County, West Virginia

**Funding:**

WV DEP Abandoned Mine  
Lands Program

**Construction Cost:**

\$1,082,091 (Engineers Estimate  
with 10% Contingency)

**Project Status:**

Design Completed

**Project Team:**

*Principal In Charge:*  
*Ken Moran, P.E.*

*Project Manager / Project  
Engineer:*  
*Jonathan Carpenter, P.E.*

The AML affected area is located in the  
Midwestern portion of Mingo County. The area  
is approximately 2.6 square miles

This project consists of approximately 14,600  
linear feet of 6" water line, a 25 GPM water  
booster station, a new 53,000 Gallon water  
storage tank, and replacing an existing  
100,000 gallon welded steel water storage  
tank with a new 100,000 bolted steel water  
tank.

The project has been approved by the Health  
Department and the Public Service  
Commission. One the District has finalized  
the easements the project should go to bid.

The scope of services Thrasher Engineering  
provided for this project included:  
Survey, supervision of subsurface  
investigation, environmental review, design,  
development of construction documents. .

---

---

**ABANDONED MINE LANDS – AMHERSTDALE (LOGAN COUNTY)  
PRE-SETTLING BASIN AND PRE-TREATMENT FACILITY PROJECT**

---

**Client/Contact:**

WV DEP  
Office of Abandoned Mine Lands  
and Reclamation  
601 57<sup>th</sup> Street, SE  
Charleston, WV 25304  
304-926-0485

Buffalo Creek Public Service  
District  
David Crawford, Manager  
1-304-583-6586

The AML affected area is located in Logan County on CR 16, west of the city limits of Man, a distance of approximately 12.6 Miles.

The scope of the project is the design and construction of a pre-settling basin and pre-treatment system to remove metals and turbidity from the existing water sources, allowing the water existing treatment facility to utilize the surface and groundwater. This project consists of constructing three stage flocculators and sedimentation basins for treating surface water.

**Project Location:**

Logan County, West Virginia

The project has been approved by the Health Department and is awaiting Public Service Commission approval.

**Funding:**

WV DEP Abandoned Mine Lands  
Program

The scope of services Thrasher Engineering provided for this project included:  
Survey, supervision of subsurface investigation, environmental review, preparation of design, drawings, development of construction documents

**Construction Cost:**

\$1,293,490 (Engineers Estimate  
with 10% contingency)

**Project Status:**

Design Completed

**Project Team:**

**Principal In Charge:**  
**Ken Moran, P.E.**

**Project Manager / Project  
Engineer:**  
**Jonathan Carpenter, P.E.**

---

## Norton-Harding-Jimtown PSD Water Line Extension

---

**Client/Contact:**

Norton-Harding-Jimtown PSD  
P.O. Box 87  
Scott Road  
Norton, WV 26301  
304-636-6223

This project extends potable water service to the community of Kingsville, Leslie Equipment, and the Tygart Valley Regional Jail.

**Project Location:**

Randolph County, West Virginia

**Funding:**

DEP / AML  
USDA / RURAL UTILITIES  
Special Tribal Assistance Grant

This project includes 157,000 gallon water storage tank and foundation, concrete valve vault, access road grading, tank site grading, telemetry, electronic control valve, 200 LF of 30" steel casing (bore & jack), 200 LF of 10" liner, 300 LF of chain link fencing around tank, 31,500 LF of 6" water pipe, 100 LF of 6" M.JT. pipe with megalugs, 200 LF of ¾" service tubing (open cut), 10 EA 6" gate valves, 3 EA ¾" air release valves, 2 " EA 2" post flushing hydrants, 3,000 LF of WVDOH rock lined ditch, 2 EA tie into existing 8" water line, and 31 new meter services.

**Construction Estimate:**

\$1,059,343.00

**Total Project Cost:**

\$1,024,870.00

**Project Status:**

In Progress

The firm provided preliminary engineering and design, final design, bid administration and negotiation, survey, construction management, materials and testing services.

**Project Team:**

*Principal In Charge:*  
*Ken Moran, P.E.*

*Project Manager/ Project Engineer:*  
*Clay P. Riley, P.E.*





### **Town of Masontown Snake Hill Water Project**

**Client/Contact:**

Town of Masontown  
P.O. Box 645  
Masontown, WV 26542  
304-864-5561

**Project Location:**

Preston County, West Virginia

**Engineer's Estimate:**

\$680,000.00

**Construction Cost:**

\$686,255.00

**Project Status:**

Under Construction

***WATERLINE EXTENSION  
PROJECT – 1988***

**Engineer's Estimate:**

\$1,100,000.00

**Construction Cost:**

\$1,063,837.50

***Ken Moran / Principal In Charge  
Randy Watson – Project Manager  
Water Line Designer***

This project involved extending water service to the installation of approximately 11,600 LF of 8" water line, approximately 11 new meter settings, the construction of a 200 GPM booster pump station, the installation of a solenoid control valve inside an existing booster pump station, the construction of a rechlorination building, a four-unit radio controlled telemetering system, and miscellaneous valves, fire hydrants, and trench

## Lewis County Commission Lewis County EDA Water Line Extension Project

---

**Client/Contact:**

Lewis County EDA  
304-269-4993  
P.O. Box 466  
110 Center Avenue  
Weston, WV 26452  
Doug Parsons, Executive  
Director

**Project Location:**

Lewis County, West Virginia

**Funding:**

WVIJDC Grant/Loan  
WV American Water Company  
WVIJDC Loan/AML  
HUD/Small Cities Block Grant

1. Construction	\$ <u>5,728,197.</u>
2. Engineering	\$ <u>670,000.</u>
3. Legal Cost:	\$ <u>30,000.</u>
4. Financing Cost:	\$ <u>30,000.</u>
5. Site, Easements and ROW:	\$ <u>113,000.</u>
6. Project Contingency:	\$ <u>307,000</u>

8. TOTAL  
PROJECT COST \$6,403,000.

**Engineer's Estimate:**

Contract 1: \$2,790,000.00  
Contract 2: \$2,530,000.00  
Contract 3: 300,000.00

**Bid Information:**

Contract 1: \$3,284,567.  
Contract 2: \$2,579,375.  
Contract 3: \$ 335,760.

**Total Project Cost:**  
\$6,403,000.

**Project Status:**  
Completed

**SOUTHERN LEWIS COUNTY**

The project provided potable water service to the areas of Walkersville, Crawford, Ireland, Duffy and Georgetown Road in Southern Lewis County.

Three contracts were issued for the project.

**CONTRACT #1** included the installation of approximately 8,700 LF of 8" water line, 82,000 LF of 6" water line, 4,700 LF of 4" water line, 14,500 LF of 2" water line including 233 new meter settings for new water customers. This project also included 47 fire hydrants, miscellaneous valves, and trench repair items.

**CONTRACT #2** included the installation of 62,600 LF of 8" water line, 15,200 LF of 6" water line, 18,500 LF of 2" water line including 179 new meter settings for new water customers. This project also includes the construction of a 200 GPM booster pump station, and 28 fire hydrants, along with valves, and trench repair items.

**CONTRACT #3** The construction of two (2) 100,000 gallon glass-lined bolted steel water storage tanks, including valve vault, piping, site work, access road, and fencing, complete for each water storage tank.





## Chestnut Ridge PSD Water Line Extension Project

### Client/Contact:

Chestnut Ridge PSD  
P.O. Box 386  
209 South Main Street  
Philippi, WV 26416  
304-497-4935

### Project Location:

Barbour County, West Virginia

### Funding:

EPA Grant and USDA/RUS Loan

### Engineer's Estimate:

\$1,920,000

### Bid Information:

\$1,752,502

### Total Project Cost:

\$2,500,000

### Project Status:

Phase I Complete  
Phase II In Design

*Phase I:* This project consisted of design and construction of **23 miles of water line extension**, a **53,000 gallon standpipe** and **2 booster pump stations** in the areas of Shiloh, Valley Furnace, Kasson, Hiram and Claude.

This project included:

- 3,200 LF of 8" water line,
- 55,660 LF of 6" water line,
- 8,940 LF of 4" water line,
- 12,080 LF of 3" water line,
- 32,320 LF of 2" water line,
- 132 new meter settings,
- Valves,
- Fire hydrants, and
- Casings.

This project also included two new booster pump stations and upgrades to the existing Moatsville pump station.

*Phase II* of this project is currently in design phase. Phase II will extend potable water service to **442 new customers** in Southwestern Preston County, the Pea Ridge, Teter Creek and Colebanks areas of Barbour County, and along Route 250 North of Philippi. The projected cost for Phase II is estimated to be around \$5,939,000.



### **Hamrick PSD Water Treatment Plant Upgrade and Extension Project**

**Client/Contact:**

Hamrick PSD  
P.O. Box 228  
Hendricks, WV 26271  
304-478-2898

**Project Location:**

Tucker County, West Virginia

**Funding Source:**

Small Cities Block Grant  
DWTRF Loan

**Engineer's Estimate:**

\$1,780,000

**Bid Information:**

\$1,721,555

**Total Project Cost:**

\$2,461,000

**Project Status:**

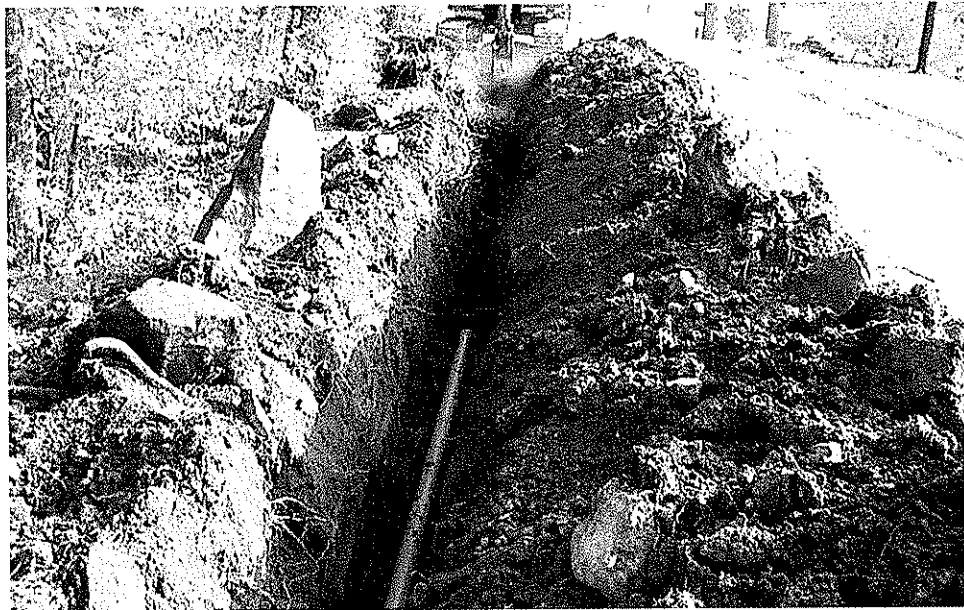
Complete

This project consisted of design, preparation and construction management for upgrade of water treatment plant, water storage tank and **15 miles of water line extension**. The project enabled the PSD to treat water in accordance with the SWDA 2004 parameters, in addition to increasing the customer base and adding more water storage to the system.

The water line extension portion of this project extended potable water to the Holly Meadows and Horseshoe Run areas. This project included:

- 63,258 LF of 6" water line,
- 8,140 LF of 4" water line,
- 9,420 LF of 2" water line,
- 119 new meter settings,
- A 60 gpm booster pump station,
- A 71,000 gallon water reservoir,
- A 2-unit telemetering system,
- Valves,
- Fire hydrants,
- Casings,
- A valve vault,
- Piping,
- Fencing, and
- Site work.

The water treatment plant upgrade portion of this project included construction of a pre-sedimentation system and building, new chemical feed building and equipment, renovations of two existing filters and one flocculator, new on-line analytical equipment, site piping and site work, and a new natural gas service and distribution system.



## Hodgesville PSD Water Line Extension Project

**Client/Contact:**

Hodgesville Public Service District  
P.O. Box 758  
188 Fayette Street  
Buckhannon, WV 26201  
304-472-1904

**Project Location:**

Upshur County, West Virginia

**Project Location:**

USDA / RUS Loan  
HUD Small Cities Block Grant

**Engineer's Estimate:**

\$2,294,559

**Bid Information:**

\$2,302,949

**Total Project Cost:**

\$3,100,000

**Project Status:**

Complete

This project consisted of design and construction of **26 miles of water line extension, 2 booster stations** and a water storage tank.

This project included:

- 1,550 LF of 8" water line,
- 88,070 LF of 6" water line,
- 10,530 LF of 4" water line,
- 5,300 LF of 3" water line,
- 27,970 LF of 2" water line,
- 186 new meter settings,
- Two new booster pump stations,
- A 2-unit radion controlled telemetry system,
- Fire hydrants, and
- Valves.

This project also included construction of a new **246,000 gallon water storage tank**, a valve vault, piping, site work and fencing.

This project extended water service along Hackers Creek, Route 20 North, Hall Road and Bridge Run.



## **Gilmer County PSD Stumptown & Dusk Camp Water Line Extension Projects**

### **Client/Contact:**

Gilmer County PSD  
232 West Main Street  
Glenville, WV 26351  
304-462-4272

### **Project Location:**

Gilmer County, West Virginia

### **Funding:**

Stumptown: DWTRF  
Dusk Camp: US EPA/SAPP Grant  
WVIJDC Loan

### **Construction Estimate:**

Stumptown: \$2,426,000  
Dusk Camp: \$2,324,000

### **Bid Information:**

Stumptown: \$2,724,004  
Dusk Camp: Not Yet Bid

### **Total Project Cost:**

Stumptown: \$2,940,000  
Dusk Camp: \$2,925,000

### **Project Status:**

Stumptown: Complete  
Dusk Camp: In Design Phase

These projects extend potable water service to rural areas of Gilmer County.

**Stumptown Water Line Extension** will serve customers from Glenville to Stumptown. The line extension starts at Glenville and continues across Nutter Run, Kelly Run, Spruce Run, and Route 119-33 up to the Calhoun County line. This project includes:

- 111,000 LF of 6" water line,
- 3,500 LF of 4" water line,
- 11,900 LF of 2" water line,
- 123 new meter settings,
- A 150 gpm booster pump station,
- Two pressure reducing valve stations,
- A 2-unit radio controlled telemetering system,
- Fire hydrants, and
- Valves.

Additionally, a **50,000 gallon water storage tank**, valve vault, piping, site work, access road and fencing are included in this project.

**Dusk Camp Water Line Extension** extends potable water service to the Gluck Run, Little Ellis Creek, Rosedale Road, Joes Run, Duskcamp Run and Alice Road areas of Gilmer County. This project will service an **additional 101 customers**.

---

## Greater Harrison PSD Water Line Extension Projects

---

**Client/Contact:**

Greater Harrison  
P.O. Box 190  
West Milford, WV 26451  
304-745-3134

**Project Location:**

Harrison County, West Virginia

**Funding Source:**

WVJDC Loan and Grant  
Local Contribution

**Engineer's Estimate:**

Brushy Fork: \$1,539,000

**Total Project Cost:**

Brushy Fork: \$1,850,000

**Project Status:**

Complete

*Brushy Fork Water Line Extension Project:* This project consisted of water line extensions along Brushy Fork, County Route 26, 26/2, Coplin Run, Moss Run, and Beards Run.

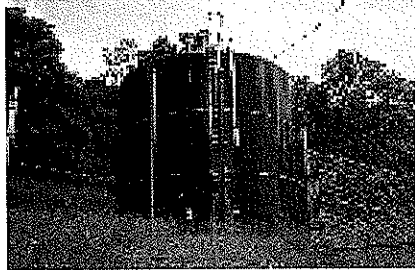
This project included:

- 20,800 LF of 8" water line,
- 48,500 LF of 6" water line,
- 2,600 LF of 4" water line,
- 1,870 LF of 2" water line,
- 156 new meter settings,
- 17 fire hydrants,
- 13 flushing hydrants,
- 12 air release valves,
- Gate valves,
- 3,100 LF of rock-lined ditch,
- 20 CY streambank slope protection,
- One booster pump station,
- A radio telemetry SCADA system,
- A 107,000 gallon water storage tank,
- A valve vault, and
- Piping and fencing.

*Johnstown Water Line Extension:* This project included:

- 21,180 LF of 6" water line,
- 4,735 LF of 2" water line,
- 51 new meter settings,
- 7 fire hydrants,
- 5 flushing hydrants,
- A 30 gpm above ground package booster pump station,
- A 20 gpm hydro pneumatic booster pump station,
- Gate valves,
- A 47,000 gallon water storage tank,
- Valve vault, and
- Access road.

*Normandy Estates Water Line Extension:* This project included **8,720 LF of 6" water line**, gate valves, air release valves, **7 new meter settings** and a blow-off assembly.



**Water Storage Tanks Constructed  
for this Project**



---

## **Hardy County PSD Upgrade and Extension Projects**

---

**Client/Contact:**

Hardy County Public Service District  
P.O. Box 209  
223 North Main Street, Suite 102  
Moorefield, WV 26836  
304-530-3047

**Project Location:**

Hardy County, West Virginia

**Funding:**

USDA / RUS Loan and Grant  
HUD Small Cities Block Grant

**Total Project Cost:**

\$6,245,000

**Project Status:**

Complete

These projects have consisted of design, preparation, survey, construction stakeout and construction management inspection services for various water system projects which included a total of:

- Approximately 47 miles of 8", 6", 4" and 2" distribution line,
- 5 water storage tanks,
- 4 booster pump stations,
- Construction of a 4,000 gpm raw water pump station and intake structure, and
- Approximately 1.5 miles of 18" raw water line.

These projects included water line extensions to Robert C. Byrd Industrial Park, the Southfork waterline extension, and extensions to Rig/Critestown, Kelly Road, Durgon Road, Walnut Bottom Road and Old Fields Road.

Types of services provided include: water distribution line design, booster station design, storage tank design, inspection of pipeline installations, and property surveying.



---

## Hardy County PSD Upgrade and Extension Project Detail

---

### Southfork Water Line Extension:

- 78,000 LF Water Line
- 125 New Meter Settings
- Booster Pump Station
- 71,000 Gallon Water Storage Tank
- Fire Hydrants
- Flushing Hydrants
- Gate Valves
- Master Meter Vault
- 2-Way Radio Telemetry
- Sediment and Erosion Control
- Concrete Valve Vault
- Site Grading
- Access Road

### Rigs/Critestown Water Distribution System Project:

- 53,515 LF Water Line
- 2,925 LF Service Tubing
- 118 New Meter Settings
- 75 gpm Package Booster Pump Station
- 100,000 Gallon Standpipe
- Tank Valve Vault
- Tank Site Grading
- Access Road
- Gate Valves
- Fire Hydrants
- Flushing Hydrants
- 2-Unit Radio Telemetry

### Phase III Project:

- 89,900 LF Water Line
- 147 New Meter Settings
- 2 Package Water Booster Pump Stations
- 150,000 Gallon Water Reservoir
- 54,000 Gallon Standpipe
- 22,000 Gallon Standpipe

### Phase IV Project:

- 108,850 LF Water Line
- 3,150 LF Servicing Line
- 139 New Meter Settings
- 150 gpm Package Booster Pump Station
- 80 gpm Package Booster Pump Station
- 40 gpm Package Booster Pump Station
- Fire Hydrant
- Tank Site Preparation/Restoration
- Two 2-Unit Telemetry Units

### *Kelly Road, Durgon Road, Walnut Bottom Road and Old Fields Road Water Line Extension:*

- 26,050 LF Water Line
- 47 New Meter Settings
- 40 gpm Hydro pneumatic Booster Pump Station
- Fire Hydrants

## ***REFERENCES***

- Hamrick Public Service District **304-478-2898**
- Hardy County Public Service District **304-530-3047**
- Gilmer County Public Service District **304-462-5382**
- Chestnut Ridge Public Service District **304-457-4935**
- Greater Harrison Public Service District **304-745-3134**
- Mingo County Public Service District **304-235-2244**
- Hodgesville Public Service District **304-472-1904**
- Lewis County Economic Development Authority **304-269-4993**
- City of Mannington, WV **304-986-2700**
- City of Bridgeport, WV **304-842-8200**
- City of Weirton, WV **304-797-8544**

PROJECT NAME  
 STANDARD / PAINT CREEK / COLLINSDALE  
 WATER LINE DESIGN RFQ DEP14383  
 DATE (DAY, MONTH, YEAR)  
 7-10-2008  
 FEIN  
 55-0633596-6

1. FIRM NAME  
 THRASHER ENGINEERING, INC.  
 2. HOME OFFICE BUSINESS ADDRESS  
 30 COLUMBIA BLVD., CLARKSBURG, WV  
 26301

3. FORMER FIRM NAME  
 NOT APPLICABLE  
 6a. WV REGISTERED DBE  
 (Disadvantaged Business  
 Enterprise)  
 YES NO X

4. HOME OFFICE TELEPHONE  
 304-624-4108  
 5. ESTABLISHED (YEAR)  
 1983  
 6. TYPE OWNERSHIP  
 Individual Corporation X  
 Partnership Joint-Venture

7. PRIMARY AML DESIGN OFFICE: ADDRESS/ TELEPHONE/ PERSON IN CHARGE/ NO. AML DESIGN PERSONNEL EACH OFFICE  
 30 COLUMBIA BLVD, CLARKSBURG, WV / 304-624-4108 / KENNETH P. MORAN, P.E., VICE PRESIDENT / 12  
 300 ASSOCIATION DRIVE, CHARLESTON, WV / 304-343-7601 / JONATHAN CARPENTER, MANAGING PARTNER / 2  
 8. NAMES OF PRINCIPAL OFFICERS OR MEMBERS OF FIRM  
 H. Wood Thrasher, P.E. - President  
 Kenneth P. Moran, P.E. - Vice President  
 Kurt Newbrough, P.S. - Secretary  
 8a. NAME, TITLE, & TELEPHONE NUMBER - OTHER PRINCIPALS  
 WM. RANDY WATSON -304-624-4108 - PARTNER  
 CHAD BILLER, P.E.-304-624-4108 -PARTNER  
 CHAD M. RILEY,P.E.-304-624-4108 - PARTNER  
 CLAY P. RILEY, P.E.-304-624-4108 -PARTNER  
 DANIEL E. FERRELL, P.E. -304-624-4108 -PARTNER

9. PERSONNEL BY DISCIPLINE

22 ADMINISTRATIVE	—	ECOLOGISTS	1	LANDSCAPE ARCHITECTS	1	STRUCTURAL ENGINEERS
3 ARCHITECTS	—	ECONOMISTS	1	MECHANICAL ENGINEERS	47	SURVEYORS
— BIOLOGIST	—	ELECTRICAL ENGINEERS	—	MINING ENGINEERS	—	TRAFFIC ENGINEERS
27 CADD OPERATORS	3	ENVIRONMENTALISTS	2	PHOTOGRAMMETRISTS	—	OTHER
— CHEMICAL ENGINEERS	—	ESTIMATORS	—	PLANNERS: URBAN/REGIONAL	—	
26 CIVIL ENGINEERS	1	GEOLOGISTS	—	SANITARY ENGINEERS	—	
36 CONSTRUCTION INSPECTORS	—	HISTORIANS	—	SOILS ENGINEERS	—	
— DESIGNERS	—	HYDROLOGISTS	2	SPECIFICATION WRITERS	—	
— DRAFTSMEN	—					170 TOTAL PERSONNEL

TOTAL NUMBER OF WV REGISTERED PROFESSIONAL ENGINEERS IN PRIMARY OFFICE: 14  
 \*RPES other than Civil and Mining must provide supporting documentation that qualifies them to supervise and perform this type of work.

10. HAS THIS JOINT-VENTURE WORKED TOGETHER BEFORE?  YES  NO NOT APPLICABLE

11. OUTSIDE KEY CONSULTANTS/SUB-CONSULTANTS ANTICIPATED TO BE USED. Attach "AML Consultant Confidential Qualification Questionnaire". Not applicable

NAME AND ADDRESS:	SPECIALTY:	WORKED WITH BEFORE Yes <input checked="" type="checkbox"/> No <input type="checkbox"/>
NAME AND ADDRESS:	SPECIALTY:	WORKED WITH BEFORE Yes <input type="checkbox"/> No <input type="checkbox"/>
NAME AND ADDRESS:	SPECIALTY:	WORKED WITH BEFORE Yes <input type="checkbox"/> No <input type="checkbox"/>
NAME AND ADDRESS:	SPECIALTY:	WORKED WITH BEFORE Yes <input type="checkbox"/> No <input type="checkbox"/>
NAME AND ADDRESS:	SPECIALTY:	WORKED WITH BEFORE Yes <input type="checkbox"/> No <input type="checkbox"/>
NAME AND ADDRESS:	SPECIALTY:	WORKED WITH BEFORE Yes <input type="checkbox"/> No <input type="checkbox"/>
NAME AND ADDRESS:	SPECIALTY:	WORKED WITH BEFORE Yes <input type="checkbox"/> No <input type="checkbox"/>
NAME AND ADDRESS:	SPECIALTY:	WORKED WITH BEFORE Yes <input type="checkbox"/> No <input type="checkbox"/>
NAME AND ADDRESS:	SPECIALTY:	WORKED WITH BEFORE Yes <input type="checkbox"/> No <input type="checkbox"/>

12. A Is your firm experienced in Abandoned Mine Land Remediation/Mine Reclamation Engineering?

YES Description and Number of Projects: THRASHER ENGINEERING HAS PERFORMED NUMEROUS PROJECTS INVOLVING LAND REMEDIATION, STORM WATER DRAINAGE, SLIP REPAIR AND MASS GRADING IN RELATION TO SITE DEVELOPMENT, WATER LINE AND SANITARY SEWER PROJECTS AS RELATED TO ABANDONED MINE LANDS PROJECTS. THRASHER ENGINEERING, INC.'S CHARLESTON, WEST VIRGINIA OFFICE WAS AWARDED TWO WATER LINE PROJECTS FOR AML AFFECTED AREAS IN 2005. THESE PROJECTS WERE THE AMHERSTDALE PROJECT AND THE RAGLAND PROJECT IN MINGO / LOGAN COUNTIES. ADDITIONALLY, MANY OF OUR WATER LINE PROJECTS HAVE BEEN PARTIALLY FUNDED BY AML. OUR DESIGN TEAM ENVIRONMENTAL MANAGER HAS 23 YEARS OF EXPERIENCE AS GEOLOGIST, HYDROLOGIST AND ENVIRONMENTAL SPECIALIST WITH CONSOL ENERGY. PROJECTS INCLUDED THE ENGINEERING AND FINAL RECLAMATION OF THE BLACKSVILLE NO.1D, PURSGLOVE, ARKWRIGHT, OSAGE AND HUMPHREY MINES IN MONONGALIA COUNTY. THE THRASHER ENGINEERING SURVEY DEPARTMENT HAS PERFORMED SERVICES FOR PRE AND POST MINE SUBSIDENCE FOR MAJOR COAL COMPANIES

B. Is your firm experienced in Soil Analysis?

YES Description and Number of Projects: THRASHER ENGINEERING MAINTAINS A MATERIALS TESTING AND ANALYSIS LAB AT ITS CLARKSBURG, WV OFFICE. SOIL ANALYSIS EXPERIENCE IS SPECIFICALLY IN GRADATIONS AND CLASSIFICATION WE PERFORM THESE SOIL ANALYSES ON ALL OUR PRIVATELY FUNDED SITE DEVELOPMENT PROJECTS.

A. Is your firm experienced in hydrology and hydraulics?

YES Description and Number of Projects: TEI HAS EXTENSIVE EXPERIENCE IN HYDRAULIC MODELING FOR WATER AND WASTEWATER PROJECTS THROUGHOUT WEST VIRGINIA. OUR CONSULTING ENGINEER IS A CERTIFIED MASTER MODELER THROUGH THE HAESTED METHOD. THROUGH OUR WORK IN THE PLANNING AND DESIGN OF BRIDGES FOR THE WEST VIRGINIA DEPARTMENT OF HIGHWAYS AND WATER LINE EXTENSION PROJECTS, THRASHER ENGINEERING HAS EXTENSIVE EXPERIENCE IN HYDROLOGY. OUR TEAM ENVIRONMENTAL MANAGER PARTICIPATED IN THE ENGINEERING AND ENVIRONMENTAL PERMITTING OF THE FINAL ABANDONMENT OF THE MORGANTOWN OPERATIONS OF CONSOL COAL COMPANY. THIS INCLUDED THE GEOLOGIC HYDROLOGY STUDY OF THE ARKWRIGHT, OSAGE PURSGLOVE AND HUMPHREY MINE POOLS AND THEIR INTER-RELATIONSHIP TO ONE ANOTHER AND TO ADJACENT MINING OPERATIONS. SHE ALSO WAS INVOLVED IN THE STRATEGIC PLACEMENT OF ACID MINE DRAINAGE TREATMENT FACILITIES AND PLANT DESIGN.

B. Does your firm produce its own Aerial Photography and Develop Contour Mapping?

YES Description and Number of

Projects:

NO WE UTILIZE THE SERVICES OF NUMEROUS FIRMS, INCLUDING PENTREE, INC. WHICH IS AN AFFILIATE COMPANY OF THRASHER ENGINEERING INC. THROUGH THE RESOURCE ENGINEERING GROUP HOLDING COMPANY.

C. Is your firm experienced in domestic waterline design? (Include any experience your firm has in evaluation of aquifer degradation as a result of mining.)

YES Description and Number of Projects: THRASHER ENGINEERING HAS DESIGNED OVER 100 WATER LINE EXTENSION PROJECTS IN THE PAST 25 YEARS OF BUSINESS. PROJECTS INCLUDE LINES, BOOSTER STATIONS, WATER TREATMENT PLANTS, AND STORAGE FACILITIES. MANY OF THESE PROJECTS ARE IN AREAS WITH AML AFFECTED WATER

D. Is your firm experienced in Acid Mine Drainage Evaluation and Abatement Design?

YES Description and Number of Projects: OUR TEAM ENVIRONMENTAL MANAGER PARTICIPATED IN THE ENGINEERING AND ENVIRONMENTAL PERMITTING OF THE FINAL ABANDONMENT OF THE MORGANTOWN OPERATIONS OF CONSOL COAL COMPANY. THIS INCLUDED THE GEOLOGIC HYDROLOGY STUDY OF THE ARKWRIGHT, OSAGE PURSGLOVE AND HUMPHREY MINE POOLS AND THEIR INTER-RELATIONSHIP TO ONE ANOTHER AND TO ADJACENT MINING OPERATIONS. SHE ALSO WAS INVOLVED IN THE STRATEGIC PLACEMENT OF AACL MINE DRAINAGE TREATMENT FACILITIES AND PLANT DESIGN. IN ADDITION, THRASHER ENVIRONMENTAL, THE CHARLESTON WV BRANCH OF OUR COMPANY DESIGNED AN AWARD WINNING WATER TREATMENT PLANT FOR MARTINKA MINES IN MARION COUNTY, WEST VIRGINIA TO TREAT DRAINAGE.

13. PERSONAL HISTORY STATEMENT OF PRINCIPALS AND ASSOCIATES RESPONSIBLE FOR AML PROJECT DESIGN (Furnish complete data but keep to essentials)

NAME & TITLE (Last, First, Middle Int.)  <b>MORAN, KENNETH P.</b>	YEARS OF AML DESIGN EXPERIENCE: 5	YEARS OF AML RELATED DESIGN EXPERIENCE: 15	YEARS OF DOMESTIC WATERLINE DESIGN EXPERIENCE: 22
	YEARS OF EXPERIENCE		

Brief Explanation of Responsibilities  
 Mr. Moran joined Thrasher Engineering in 1991 and currently serves as Vice President and Chief Engineer. Mr. Moran is responsible for feasibility studies and design of public utility projects (sanitary sewer, water and storm water) for state, federal and private clients. Additionally, Mr. Moran has extensive experience in all aspects of engineering and with funding and regulatory agencies in conjunction with projects.

EDUCATION (Degree, Year, Specialization)    **B.S., Civil Engineering Technology, 1983 - Fairmont State University**

MEMBERSHIP IN PROFESSIONAL ORGANIZATIONS

- Friendship Lodge No.56 A.F. & A.M.
- WV Society of Professional Engineers
- Member of American Society of Civil Engineers

REGISTRATION (Type, Year, State)

- Registered Professional Engineer (PE), State of West Virginia
- Registered Professional Engineer (PE), State of Virginia
- Registered Professional Engineer (PE), State of Ohio
- Professional Land Surveyor (PS), State of West Virginia

13. PERSONAL HISTORY STATEMENT OF PRINCIPALS AND ASSOCIATES RESPONSIBLE FOR AML PROJECT DESIGN (Furnish complete data but keep to essentials)

NAME & TITLE (Last, First, Middle Int.)  <b>CARPENTER, JONATHAN</b>	YEARS OF AML DESIGN EXPERIENCE: 4	YEARS OF AML RELATED DESIGN EXPERIENCE: 10	YEARS OF DOMESTIC WATERLINE DESIGN EXPERIENCE: 10
	YEARS OF EXPERIENCE		

BRIEF EXPLANATION OF RESPONSIBILITIES: **Jonathan Carpenter, P.E.**, is a Partner of Thrasher Engineering, Inc. and will serve as **Project Manager / Project Engineer**. His major responsibility will be for project communication and oversight of all design and construction aspects. He serves as Managing Partner of Thrasher Engineering's Charleston, WV office. Mr. Carpenter has extensive experience in water line extension projects throughout West Virginia. He served as Project Manager and Project Engineer for the Amerherstdale and Ragland AML Projects. Additionally, Mr. Carpenter is experienced with the WVDEP AML's project funding for other projects.

EDUCATION (Degree, Year, Specialization):

- **B.S., Civil Engineering, 1997 - University of Tennessee**

MEMBERSHIP IN PROFESSIONAL ORGANIZATIONS

- American Society of Civil Engineers
- American Water Works Association - Board Member, Third Trustee

REGISTRATION (Type, Year, State)

- **P.E. 2001 Registered Professional Engineer, State of West Virginia, 15425**
- **Registered Professional Engineer (PE), 2006 State of Maryland, 32075**

13. PERSONAL HISTORY STATEMENT OF PRINCIPALS AND ASSOCIATES RESPONSIBLE FOR AML PROJECT DESIGN (Furnish complete data but keep to essentials)

NAME & TITLE (Last, First, Middle Int.)		YEARS OF EXPERIENCE	
FLUHARTY, MATTHEW		YEARS OF AML DESIGN EXPERIENCE: 10	YEARS OF DOMESTIC WATERLINE DESIGN EXPERIENCE: 10
Brief Explanation of Responsibilities Mr. Fluharty joined Thrasher Engineering in 2000 and serves as Project Engineer for Water and Sanitary Sewer Projects. Mr. Fluharty is responsible for design (including booster pump stations, water storage tanks, waterlines, telemetering systems and pressure reducing valves), project estimating, funding and permit applications and right-of-ways. Mr. Fluharty also served as Project Representative for Highways/Bridges, water and sanitary sewer projects. He served as Project Engineer for the design of the Masontown, WV water line projects which were partially funded by AML.			
EDUCATION (Degree, Year, Specialization) ■ B.S. Civil Engineering, 2000 - West Virginia University			
MEMBERSHIP IN PROFESSIONAL ORGANIZATIONS			
<input type="checkbox"/> West Virginia Rural Water Association <input type="checkbox"/> American Water Works Association			
REGISTRATION (Type, Year, State) <input type="checkbox"/> Registered Professional Engineer - 2003 -State of West Virginia #16375 <input type="checkbox"/> Registered Professional Engineer - 2007 -State of Maryland - #33491 <input type="checkbox"/> Registered Professional Engineer - 2008-State of Pennsylvania #PE076002 <input type="checkbox"/> WVDOH Certified Compaction Technician			

13. PERSONAL HISTORY STATEMENT OF PRINCIPALS AND ASSOCIATES RESPONSIBLE FOR AML PROJECT DESIGN (Furnish complete data but keep to essentials)

NAME & TITLE (Last, First, Middle Int.)		YEARS OF EXPERIENCE	
FLETCHER, SHEIRL		YEARS OF AML DESIGN EXPERIENCE: -23	YEARS OF DOMESTIC WATERLINE DESIGN EXPERIENCE: -
Brief Explanation of Responsibilities Sheirl Fletcher joined Thrasher Engineering, Inc. in 2007 and serves as Environmental Manager for the firm. Prior to joining Thrasher, Sheirl served as Environmental Manager for a major coal firm. She has more than 20 years experience and brings comprehensive knowledge of environmental regulatory programs and reporting requirements in multiple states to our clients' projects, along with technical expertise in environmental engineering, geology and hydrology			
EDUCATION (Degree, Year, Specialization) <input type="checkbox"/> B.S., West Virginia University, Morgantown, WV - Bachelor of Science- Geology			
MEMBERSHIP IN PROFESSIONAL ORGANIZATIONS			
REGISTRATION (Type, Year, State) NA			

**PERSONAL HISTORY STATEMENT OF PRINCIPALS AND ASSOCIATES RESPONSIBLE FOR AML PROJECT DESIGN (Furnish complete data but keep to essentials)**

NAME & TITLE (Last, First, Middle Int.)		YEARS OF AML DESIGN EXPERIENCE:	YEARS OF AML RELATED DESIGN EXPERIENCE:	YEARS OF DOMESTIC WATERLINE DESIGN EXPERIENCE:
<b>NEWBROUGH, KURT</b>			23	23
<p>Brief Explanation of Responsibilities Mr. Newbrough joined Thrasher Engineering in 1990 and is Principal and Partner in the firm. Mr. Newbrough serves as Survey Supervisor and is responsible for assignment and review of all survey activities. Mr. Newbrough has extensive experience in all aspects of surveys, including but not limited to boundary and easement surveys and the preparation of plats and legal descriptions. Mr. Newbrough also performs courthouse research, computes field data for construction layout, and processes GPS raw data for both public and private clientele in conjunction with Thrasher Engineering projects as well as separate contracts. He also serves in the elected position of Harrison County (WV) Surveyor</p>				
<p>EDUCATION (Degree, Year, Specialization)</p> <ul style="list-style-type: none"> <li>■ Surveying - John Tyler Community College, Chester, VA</li> <li>■ United Career Center, Clarksburg, WV</li> </ul>				
<p>MEMBERSHIP IN PROFESSIONAL ORGANIZATIONS</p> <ul style="list-style-type: none"> <li>■ West Virginia Association of Land Surveyors</li> <li>■ American Congress on Surveying and Mapping</li> <li>■ Member Strathmore's Who's Who</li> </ul>				
<p>REGISTRATION (Type, Year, State)</p> <ul style="list-style-type: none"> <li>■ Professional Land Surveyor (PS), West Virginia #1618 - 1995</li> <li>■ OSHA Hazardous Waste Operations and Emergency Response Center 29 CFR 1910.120</li> <li>■ US Department of Labor/Mine Safety and Health Administration</li> </ul>				
<p>13. PERSONAL HISTORY STATEMENT OF PRINCIPALS AND ASSOCIATES RESPONSIBLE FOR AML PROJECT DESIGN (Furnish complete data but keep to essentials)</p>				
NAME & TITLE (Last, First, Middle Int.)		YEARS OF AML DESIGN EXPERIENCE:	YEARS OF AML RELATED DESIGN EXPERIENCE:	YEARS OF DOMESTIC WATERLINE DESIGN EXPERIENCE:
<b>URQUHART, THOMAS</b>		5	32	32
<p>BRIEF EXPLANATION OF RESPONSIBILITIES Mr. Urquhart joined Thrasher Engineering in 1996 and serves as Consultant for the firm. Mr. Urquhart is experienced in civil engineering of public utilities including design and construction of water storage tanks, new and replacement water and sanitary sewer lines, pump stations and water treatment and wastewater treatment plants. Mr. Urquhart previously served as General Manager/Engineering for the Morgantown (WV) Utility Board.</p>				
<p>EDUCATION (Degree, Year, Specialization) M.S. Civil Engineering - West Virginia University</p> <p>B.S. Civil Engineering - West Virginia University</p>				
<p>MEMBERSHIP IN PROFESSIONAL ORGANIZATIONS</p> <ul style="list-style-type: none"> <li>■ American Academy of Environmental Engineers</li> </ul>				
<p>Registered Professional Engineer (PE) - State of West Virginia #05262                  Registered Professional Engineer (PE) - State of Pennsylvania #PE01449E                  Registered Professional Engineer (PE) - State of Ohio #64320                  Registered Professional Engineer (PE) - State of Maryland #30289                  Certified Master Modeler by Heastad Methods for Water Systems, 2002</p>				



14. PROVIDE A LIST OF SOFTWARE AND EQUIPMENT AVAILABLE IN PRIMARY OFFICE WHICH WILL BE USED TO COMPLETE A DESIGN SERVICES

Thrasher Engineering, Inc. will design work for AML utilizing one of the largest networks of computer aided design (CAD) equipment, software and trained personnel in the State of West Virginia.

Connected through a Virtual Private Network, our CAD staff has the ability to share necessary plans among our locations. This will allow work designed for AML to be prepared and updated at the office location that best meets the needs of the scope of services.

AutoCAD Landdesktop 2008 and Microstation V8 software is utilized at 48 CAD stations throughout our locations. Additionally, equipment includes 10 large format (size E) plotters and 5 large format plotter / scanners. CAD plans are prepared by both dedicated CAD employees and by staff engineers and engineering technicians in each of the firm's offices.

Thrasher Engineering, Inc. also utilized top-of-the line survey equipment. Our survey work is accomplished with global positioning systems (GPS) and electronic distance measuring (EDM) survey stations with data gathering capabilities. This equipment includes: The equipment used to complete survey services for AML projects includes:

- Leica Geosystem System 500 GPS
- Leica Ski Post Processing Software
- Topcon G500 Total Station Instrument
- Leica 303 Total Station Instrument
- Leica 307 Total Station Instrument
- Leica 403 Total Station Instrument
- Leica 405 Total Station Instrument
- Leica 407 Total Station Instrument
- Leica 703 Total Station Instrument
-

15. CURRENT ACTIVITIES ON WHICH YOUR FIRM IS THE DESIGNATED ENGINEER OF RECORD: WATER TREATMENT AND DISTRIBUTION PROJECTS

PROJECT NAME, TYPE AND LOCATION	NAME AND ADDRESS OF OWNER	NATURE OF YOUR FIRM'S RESPONSIBILITY	ESTIMATED CONSTRUCTION COST	PERCENT COMPLETE
WV DEP - ABANDONED MINE LANDS - RAGLAND ROAD EXTENSION / MINGO COUNTY	WV DEP Office of Abandoned Mine Lands and Reclamation 601 57 <sup>th</sup> Street, SE Charleston, WV 25304 304-926-0485	PRELIMINARY ENGINEERING REPORTS REVIEW, ENVIRONMENTAL STUDIES AND PERMITTING, PREPARATION OF PLANS AND SPECIFICATIONS, SURVEY, DESIGN, BID DOCUMENTATION,	\$1,082,091.00	DESIGN 100% WAS PUT TO BID BY AML
WV DEP - ABANDONED MINE LANDS - AMHERSTDALE WATER TREATMENT PLANT / LOGAN COUNTY	WV DEP Office of Abandoned Mine Lands and Reclamation 601 57 <sup>th</sup> Street, SE Charleston, WV 25304 304-926-0485	PRELIMINARY ENGINEERING REPORTS, ENVIRONMENTAL STUDIES AND PERMITTING, PREPARATION OF PLANS AND SPECIFICATIONS, SURVEY, DESIGN, BID DOCUMENTATION, REVIEW AND RECOMMENDATION, CONSTRUCTION MANAGEMENT AND INSPECTION	\$1,293,490.00	DESIGN 100% WAS PUT TO BID BY AML
CHESTNUT RIDGE PUBLIC SERVICE DISTRICT - RT 92 NORTH EXTENSION	Chestnut Ridge PSD 209 S Main St. PO Box 386 Phillippi, WV 26416	PRELIMINARY ENGINEERING REPORTS, ENVIRONMENTAL STUDIES AND PERMITTING, PREPARATION OF PLANS AND SPECIFICATIONS, SURVEY, DESIGN, BID DOCUMENTATION, REVIEW AND RECOMMENDATION, CONSTRUCTION MANAGEMENT AND INSPECTION	\$5,900,000.00	40%
City of Cameron 44 Main Street Cameron, WV 26033 304-686-2366	Cameron, City of Mayor Betty Scott 44 Main St. Cameron, WV 26033 686-2366 fax 686-4706	PRELIMINARY ENGINEERING REPORTS, ENVIRONMENTAL STUDIES AND PERMITTING, PREPARATION OF PLANS AND SPECIFICATIONS, SURVEY, DESIGN, BID DOCUMENTATION, REVIEW AND RECOMMENDATION, CONSTRUCTION MANAGEMENT AND INSPECTION	\$2,700,000.00	60%

TOTAL NUMBER OF PROJECTS: 7 REPRESENTED (APPROXIMATELY 20 PHASES)  
 ADDITIONAL CURRENTLY IN PRELIMINARY / DESIGN OR CONSTRUCTION PHASES

TOTAL ESTIMATED CONSTRUCTION COSTS: \$  
 ESTIMATED COST OF ALL JOBS APPROXIMATELY \$110,000,000.00

CURRENT ACTIVITIES ON WHICH YOUR FIRM IS THE DESIGNATED ENGINEER OF RECORD: WATER TREATMENT/ DISTRIBUTION PROJECTS

PROJECT NAME, TYPE AND LOCATION	NAME AND ADDRESS OF OWNER	NATURE OF YOUR FIRM'S RESPONSIBILITY	ESTIMATED CONSTRUCTION COST	PERCENT COMPLETE
JESSICA LYNCH WATER LINE EXTENSION WIRT COUNTY, WV	TOWN OF ELIZABETH 200 BEVERLY STREET P.O. BOX 478 ELIZABETH, WV 26143	FEASIBILITY STUDY, DESIGN, FUNDING AND PERMIT APPLICATIONS, CONTRACT DOCUMENTS, FIELD SERVICES OF SURVEY AND INSPECTION	\$3,600,000	UNDER CONSTRUCTION
HAMRICK PSD MOORE/PORTERWOOD EXTENSION TUCKER COUNTY, WV	HAMRICK PSD PO BOX 228 HENDRICKS, WV 26271	FEASIBILITY STUDY, DESIGN, FUNDING AND PERMIT APPLICATIONS, CONTRACT DOCUMENTS, FIELD SERVICES OF SURVEY AND INSPECTION	\$1,100,000.	20%
TOWN OF ROWLESBURG WATER TREATMENT PLANT/ EXT. PRESTON COUNTY, WV	TOWN OF ROWLESBURG PO BOX 458 42 POPLAR STREET ROWLESBURG, WV 26425	FEASIBILITY STUDY, DESIGN, FUNDING AND PERMIT APPLICATIONS, CONTRACT DOCUMENTS, FIELD SERVICES OF SURVEY AND INSPECTION	\$4,500,000.	100% COMPLETED IN 2008
SOUTHWESTERN PSD WATER LINE EXTENSION / REPLACEMENT	SOUTHWESTERN WATER PUBLIC SERVICE DISTRICT P. O. BOX 98 FLEMINGTON, WV 26347	FEASIBILITY STUDY, DESIGN, FUNDING AND PERMIT APPLICATIONS, CONTRACT DOCUMENTS, FIELD SERVICES OF SURVEY AND INSPECTION	\$10,430,000.00	50%
POCAHONTAS COUNTY PSD WATER LINE EXTENSION PROJECT	Pocahontas County PSD HC 63 Box 122 Frank, WV 24920 phone & fax 456-3127	FEASIBILITY STUDY, DESIGN, FUNDING AND PERMIT APPLICATIONS, CONTRACT DOCUMENTS, FIELD SERVICES OF SURVEY AND INSPECTION.	\$592,000.00	25%
LINCOLN COUNTY PSD	Lincoln PSD P.O. Box 38 240 Little Coal River Rd. Alum Creek, WV 25003 304-756-2520 fax 304-756-2522	FEASIBILITY STUDY, DESIGN, FUNDING AND PERMIT APPLICATIONS, CONTRACT DOCUMENTS, FIELD SERVICES OF SURVEY AND INSPECTION.	\$3,500,000.00	40%

7 REPRESENTED (APPROXIMATELY 20 ADDITIONAL CURRENTLY IN PRELIMINARY / DESIGN OR CONSTRUCTION PHASES

TOTAL ESTIMATED CONSTRUCTION COSTS:  
 \$31,697,000.00 REPRESENTED  
 ESTIMATED COST OF ALL JOBS APPROXIMATELY \$110,000,000.00

15. CURRENT ACTIVITIES ON WHICH YOUR FIRM IS THE DESIGNATED ENGINEER OF RECORD: SANITARY SEWER PROJECTS

PROJECT NAME, TYPE AND LOCATION	NAME AND ADDRESS OF OWNER	NATURE OF YOUR FIRM'S RESPONSIBILITY	ESTIMATED CONSTRUCTION COST	PERCENT COMPLETE
BROOKE COUNTY PSD REPLACEMENT AND EXTENSION BROOKE COUNTY, WV	BROOKE CO. PSD 711 CHARLES ST. P. O. BOX 150 WELLSBURG, WV 26070	FEASIBILITY STUDY, DESIGN, FUNDING AND PERMIT APPLICATIONS, CONTRACT DOCUMENTS, FIELD SERVICES OF SURVEY AND INSPECTION	\$22,000,000	25%
GREATER HARRISON COUNTY PSD PHASE II HARRISON COUNTY, WV	GREATER HARRISON COUNTY PSD P.O. BOX 190 WEST MILFORD, WV 26451	FEASIBILITY STUDY, DESIGN, FUNDING AND PERMIT APPLICATIONS, CONTRACT DOCUMENTS, FIELD SERVICES OF SURVEY AND INSPECTION	\$11,600,000	45%
TENNERTON PSD SANITARY SEWER EXTENSION UPSHUR COUNTY, WV	TENNERTON PSD 188 FAYETTE ST. BUCKHANNON, WV 26201	FEASIBILITY STUDY, DESIGN, FUNDING AND PERMIT APPLICATIONS, CONTRACT DOCUMENTS, FIELD SERVICES OF SURVEY AND INSPECTION	\$1,675,000.	35%
POCAHONTAS COUNTY PSD WWTP AND COLLECTION SYSTEM POCAHONTAS COUNTY, WV	POCAHONTAS COUNTY PSD HC 63 BOX 122 FRANK, WV 24920	FEASIBILITY STUDY, DESIGN, FUNDING AND PERMIT APPLICATIONS, CONTRACT DOCUMENTS, FIELD SERVICES OF SURVEY AND INSPECTION	\$11,600,000	30%
HEPZIBAH PSD SANITARY SEWER EXTENSION HARRISON COUNTY, WV	ENLARGED HEPZIBAH DRAWER H HEPZIBAH, WV 26369	FEASIBILITY STUDY, DESIGN, FUNDING AND PERMIT APPLICATIONS, CONTRACT DOCUMENTS, FIELD SERVICES OF SURVEY AND INSPECTION	\$3,400,000	20%
MALDEN PUBLIC SERVICE DISTRICT SANITARY SEWER REHABILITATION KANAWHA COUNTY, WV	MALDEN PUBLIC SERVICE DISTRICT P.O. BOX 350 TAD, WV 25201-0350	FEASIBILITY STUDY, DESIGN, FUNDING AND PERMIT APPLICATIONS, CONTRACT DOCUMENTS, FIELD SERVICES OF SURVEY AND INSPECTION	\$13,600,000.	25%
CANYON PUBLIC SERVICE DISTRICT SANITARY SEWER UPGRADE AND EXT MONONGALIA COUNTY, WV	CANYON PSD 12 WICHITA STREET MORGANTOWN, WV 26508	FEASIBILITY STUDY, DESIGN, FUNDING AND PERMIT APPLICATIONS, CONTRACT DOCUMENTS, FIELD SERVICES OF SURVEY AND INSPECTION	\$6,500,000.	50%

TOTAL NUMBER OF PROJECTS: 7 REPRESENTED  
 TOTAL ACTIVE SANITARY SEWER PROJECTS APPROXIMATELY 32  
 TOTAL ESTIMATED CONSTRUCTION COSTS: \$70,300,000.00  
 TOTAL FOR ALL PROJECTS APPROXIMATELY \$150,000,000

15. CURRENT ACTIVITIES ON WHICH YOUR FIRM IS THE DESIGNATED ENGINEER OF RECORD: HIGHWAY, BRIDGE, SIDEWALKS

PROJECT NAME, TYPE AND LOCATION	NAME AND ADDRESS OF OWNER	NATURE OF YOUR FIRM'S RESPONSIBILITY	ESTIMATED CONSTRUCTION COST	PERCENT COMPLETE
CORRIDOR H GRANT COUNTY, WV	WVDOT/DOH 1900 KANAWHA BLVD EAST CHARLESTON, WV 25305	PRELIMINARY ENGINEERING, DESIGN, SURVEY	\$22,000,000.	75% - NEED FINAL COMMENTS / FINAL FIELD REVIEW
MINERAL WELLS ROUTE 2 WOOD COUNTY	WVDOT/DOH 1900 KANAWHA BLVD EAST CHARLESTON, WV 25305	PRELIMINARY ENGINEERING, DESIGN, SURVEY	TBD - JUST AWARDED	JUST AWARDED
CITY OF RIPLEY - MAIN STREET REVITALIZATION - JACKSON CO.	CITY OF RIPLEY TIM KING, CITY SUPERINTENDENT 203 SOUTH CHURCH ST. RIPLEY, WV 25271	PRELIMINARY ENGINEERING, DESIGN, SURVEY, CONTRACT DOCUMENTS, BIDDING SERVICES, CONSTRUCTION INSPECTION, MATERIALS TESTING	\$1,200,000.	90%

TOTAL NUMBER OF PROJECTS: 6 (TOTAL IN FULL APPROXIMATELY 30 SITE DEVELOPMENT - APPROXIMATELY 40 MILLION)

TOTAL ESTIMATED CONSTRUCTION COSTS: \$46,300,000. +



17. COMPLETED WORK WITHIN LAST 5 YEARS ON WHICH YOUR FIRM WAS THE DESIGNATED ENGINEER OF RECORD

PROJECT NAME, TYPE AND LOCATION	NAME AND ADDRESS OF OWNER	ESTIMATED CONSTRUCTION COST	YEAR	CONSTRUCTED (YES OR NO)
RALEIGH MEMORIAL AIRPORT RALEIGH COUNTY, WV	RALEIGH CO AIRPORT AUTHORITY 176 AIRPORT CIRCLE, ROOM 115 BEAVER, WV 25813-9475	\$5,000,000.00 - PHASE I	2007	YES
WOLFE CREEK PARK FAYETTE COUNTY, WV	FAYETTE COUNTY COMMISSION FAYETTE COUNTY COURTHOUSE 100 COURT STREET FAYETTE, WV 25840-0307	\$4,500,000. - PHASE 1	2007	YES
PINECREST DEVELOPMENT RALEIGH COUNTY, WV	PINECREST DEV AUTHORITY 200 MAIN STREET BECKLEY, WV 25801-4613	\$1,500,000.00	2007	YES
CITY OF PARSONS SANITARY SEWER LINE EXTENSION TUCKER COUNTY, WV	PARSONS, CITY OF 341 2ND ST. PARSONS, WV 26287	\$ 900,000	2007	YES
TOWN OF FARMINGTON WATER LINE REPLACEMENT PROJECT MARION COUNTY, WV	TOWN OF FARMINGTON 1314 MILL STREET FARMINGTON, WV 26571	\$1,300,000.	2007	YES
CITY OF KINGWOOD WHETSELL SETTLEMENT WATER LINE EXTENSION PRESTON COUNTY, WV	KINGWOOD, CITY OF 313 TUNNELTON ST. KINGWOOD, WV 26537-1462	\$ 420,000.	2007	YES
NORTON-HARDING-JIMTOWN PSD WATER LINE EXTENSION RANDOLPH COUNTY, WV	NORTON-HARDING-JIMTOWN PSD P.O. BOX 87 SCOTT ROAD NORTON, WV 26285	\$1,000,000	2007	YES
TOWN OF BATH - BERKELEY SPRINGS WATER WORKS MORGAN COUNTY, WV	TOWN OF BATH 271 WILKES STREET BERKELEY SPRINGS, WV 25411	\$2,000,000	2007	YES

1.7. COMPLETED WORK WITHIN LAST 5 YEARS ON WHICH YOU WERE THE DESIGNATED ENGINEER OF RECORD

PROJECT NAME, TYPE AND LOCATION	NAME AND ADDRESS OF OWNER	ESTIMATED CONSTRUCTION COST	YEAR	CONSTRUCTED (YES OR NO)
TOWN OF TUNNELTON, PRESTON COUNTY, WEST VIRGINIA; BUILDING COLLECTION SYSTEM AND AERATED LAGOON; SEWER LINES, MANHOLES, SANITARY LIFT STATIONS	TOWN OF TUNNELTON P.O. BOX 396 - BANK STREET TUNNELTON, WV 26444	\$2,630,000	2003	YES
RALEIGH COUNTY PUBLIC SERVICE DISTRICT 2 WATER LINE EXTENSIONS CLEAR CREEK EXTENSION	RALEIGH COUNTY PSD 224 EAST MAIN PO BOX 1286 SOPHIA, WV	\$3,700,000.	2006	YES
TOWN OF TERRA ALTA, PRESTON COUNTY, WEST VIRGINIA; REPLACEMENT OF COLLECTION SYSTEM AND WASTEWATER FACILITY	TOWN OF TERRA ALTA 701-A STATE AVENUE TERRA ALTA, WV 26764	\$5,750,000	2002	YES
HODGESVILLE PUBLIC SERVICE DISTRICT; DESIGN AND CONSTRUCTION OF WATER LINE EXTENSION, BOOSTER STATIONS, AND WATER STORAGE TANK	HODGESVILLE PUBLIC SERVICE DISTRICT 188 FAYETTE STREET P.O. BOX 758 BUCKHANNON, WV 26201	\$3,100,000	2004	YES
CITY OF WEIRTON; RENOVATION OF SOLIDS CONTACT CLARIFIERS	CITY OF WEIRTON 200 MUNICIPAL PLAZA 3031 BIRCH DRIVE WEIRTON, WV 26062	\$2,800,000	2003	YES
HAMRICK PUBLIC SERVICE DISTRICT, TUCKER COUNTY, WEST VIRGINIA; DESIGN, PREPARATION AND CONSTRUCTION MANAGEMENT TO UPGRADE THE WATER TREATMENT PLANT - LEAD MINE EXTENSION	HAMRICK PUBLIC SERVICE DISTRICT P.O. BOX 228 HENDRICKS, WV 26271	\$2,461,000	2004	YES
PUTNAM COUNTY BUSINESS PARK; MITIGATION OF 13 ACRES OF IMPACTED WETLAND	PUTNAM COUNTY DEVELOPMENT AUTHORITY P.O. BOX 167 SCOTT DEPOT, WV 25560	\$1,500,000	2004	YES
WOOD PRODUCTS INDUSTRIAL PARK; DEVELOPMENT, CONCEPTUAL LAYOUT, AND FINAL DESIGN FOR INDUSTRIAL PARK	MINGO COUNTY REDEVELOPMENT AUTHORITY P.O. BOX 298 68 WEST 4 <sup>TH</sup> AVENUE WILLIAMSON, WV 25661	\$2,000,000	2002	YES



17. COMPLETED WORK WITHIN LAST 5 YEARS ON WHICH YOU WERE THE DESIGNATED ENGINEER OF RECORD

PROJECT NAME, TYPE AND LOCATION	NAME AND ADDRESS OF OWNER	ESTIMATED CONSTRUCTION COST	YEAR	CONSTRUCTED (YES OR NO)
BELINGTON INDUSTRIAL PARK; DEVELOPMENT, CONCEPTUAL LAYOUT, AND DESIGN FOR INDUSTRIAL PARK	BARBOUR CO DEVELOPMENT AUTHORITY 124 N. MAIN ST. PHILIPPI, WV 26416	\$1,430,000	2003	YES
FAIRMONT INDUSTRIAL & CREDIT CORP; SITE WORK, UTILITIES, ROADWAY FOR PHASE II DEVELOPMENT	FAIRMONT INDUSTRIAL & CREDIT CORP 110 ADAMS STREET FAIRMONT, WV 26554	\$790,000	2004	YES
TOWN OF LUMBERPORT; REPLACEMENT OF A PORTION OF THE WATER DISTRIBUTION SYSTEM AND (2) WATER TANKS	TOWN OF LUMBERPORT PO BOX 519 LUMBERPORT, WV 26386	\$2,200,000	2003	YES
RIVER ROAD PUBLIC SERVICE DISTRICT; WATER LINE REPLACEMENT, EXTENSION AND STANDPIPE	RIVER ROAD PSD 179 OLD LOCK 13 ROAD MORGANTOWN, WV 26501	\$1,068,000	2004	YES
HUNDRED-LITTLETON PUBLIC SERVICE DISTRICT; WATER LINE REPLACEMENT	HUNDRED-LITTLETON PSD PO BOX 880 8 PENNSYLVANIA AVENUE HUNDRED, WV 26575	\$1,300,000.00	2002	YES
RT 16 WATER CORPORATION; WATER LINE EXTENSION	ROUTE 16 WATER CORP PO BOX 149 ST MARYS, WV 26170	\$900,000	2003	YES
CHESTNUT RIDGE PSD BARBOUR/PRESTON EXTENSION BARBOUR COUNTY, WV	CHESTNUT RIDGE PSD 209 S MAIN STREET P.O. BOX 386 PHILIPPI, WV 26416	\$2,500,000.00	2007	YES
CITY OF CAMERON WATER REPLACEMENT MARSHALL COUNTY, WV	CITY OF CAMERON 44 MAIN STREET CAMERON, WV 26033	\$2,975,000.	2007	YES


18. COMPLETED WORK WITHIN LAST 5 YEARS ON WHICH YOU WERE ASSOCIATED WITH OTHER FIRMS (INDICATE PHASE OF WORK FOR WHICH YOU WERE RESPONSIBLE)

PROJECT NAME, TYPE AND LOCATION	NAME AND ADDRESS OF OWNER	ESTIMATED CONSTRUCTION COST OF YOUR FIRM'S PORTION	YEAR	CONSTRUCTED (YES OR NO)	FIRM ASSOCIATED WITH
GLENNVILLE FEDERAL CORRECTIONAL INST. SITE DEVELOPMENT GILMER COUNTY, WV	FEDERAL BUREAU OF PRISONS 320 1 <sup>ST</sup> STREET NW 500-6 WASHINGTON, DC 20534	\$96,000,000	2003	YES	BELL JUSTICE FACILITIES
FEDERAL BUREAU OF PRISONS -CANAAN FACILITY - SITE DEVELOPMENT - SCRANTON, PA	FEDERAL BUREAU OF PRISONS 320 1 <sup>ST</sup> STREET NW 500-6 WASHINGTON, DC 20534	\$120,000,000	2002	YES	BELL JUSTICE FACILITIES
FAIRMONT STATE COLLEGE - STUDENT DORMITORY - SITE DEVELOPMENT- FAIRMONT, WV	FAIRMONT STATE UNIVERSITY 1201 LOCUST AVENUE FAIRMONT, WV 26554-2491	\$6,000,000	2004	YES	VOA ARCHITECTS
FAIRMONT STATE COLLEGE - PARKING GARAGE- SITE DEVELOPMENT -FAIRMONT, WV	FAIRMONT STATE UNIVERSITY 1201 LOCUST AVENUE FAIRMONT, WV 26554-2491	\$4,000,000	2003	YES	MARCH-WESTIN
FAIRMONT STATE UNIVERSITY FEASTER CENTER SITE DEVELOPMENT -- FAIRMONT, WV	FAIRMONT STATE UNIVERSITY 1201 LOCUST AVENUE FAIRMONT, WV 26554-2491	\$400,000.	2005	YES	VOA ARCHITECTS
FAIRMONT STATE UNIVERSITY CREATIVE ARTS AND ENGINEERING TECH BUILDING SITE DEVELOPMENT FAIRMONT, WV	FAIRMONT STATE UNIVERSITY 1201 LOCUST AVENUE FAIRMONT, WV 26554-2491	\$100,000.	2007	YES	DESIGN ALLIANCE OMNI ASSOCIATES

19. USE THIS SPACE TO PROVIDE ANY ADDITIONAL INFORMATION OR DESCRIPTION OF RESOURCES SUPPORTING YOUR FIRM'S QUALIFICATIONS TO PERFORM WORK FOR THE WV ABANDONED MINE LANDS PROGRAM

SEE ATTACHMENT - STATEMENT OF QUALIFICATIONS

20. THE FOREGOING IS A STATEMENT OF FACTS.

SIGNATURE: 

TITLE: PRINCIPAL-IN-CHARGE

PRINTED NAME: KENNETH P. MORAN, P.E. - PRINCIPAL-IN-CHARGE4

DATE: OCTOBER 7, 2008

