



associates, inc

architecture

planning

EXPRESSION OF INTEREST

WYK Associates, Inc.



Architectural/ Engineering Services

for the

West Virginia Army
National Guard –
Three Residential
Structures
at Camp Dawson
Kingwood, WV

Requested by:

Buyer:

32 - John Abbott
Req#: DEFK9019

Opening:
April 1, 2009
at 1:30 P.M.

WYK Associates, Inc.
P.O. Box 1484
205 Washington Avenue
Clarksburg, WV 26301
304-624-6326
wyk@wykarchitects.com



associates, inc
architecture
planning

Table of Contents

WV Army National Guard – Camp Dawson

- I. PURCHASING AFFIDAVIT**
- II. COMPANY OVERVIEW**
- III. PROJECT TEAM**
- IV. WYK's DESIGN APPROACH TO YOUR PROJECT**
- V. PROJECTS**
- VI. RESUMES**
- VII. CONSULTANTS**
 - i. CIVIL ENGINEERING**
CTL Engineering, Inc.
 - ii. STRUCTURAL ENGINEERING**
Allegheny Design Services
 - iii. HVAC / ELECTRICAL / PLUMBING**
CMA Consulting Engineers
- VIII. REFERENCES**



Purchasing Affidavit
WYK Associates, Inc.

STATE OF WEST VIRGINIA
Purchasing Division**PURCHASING AFFIDAVIT****VENDOR OWING A DEBT TO THE STATE:**

West Virginia Code §5A-3-10a provides that: No contract or renewal of any contract may be awarded by the state or any of its political subdivisions to any vendor or prospective vendor when the vendor or prospective vendor or a related party to the vendor or prospective vendor is a debtor and the debt owed is an amount greater than one thousand dollars in the aggregate.

PUBLIC IMPROVEMENT CONTRACTS & DRUG-FREE WORKPLACE ACT:

If this is a solicitation for a public improvement construction contract, the vendor, by its signature below, affirms that it has a written plan for a drug-free workplace policy in compliance with Article 1D, Chapter 21 of the *West Virginia Code*. The vendor **must** make said affirmation with its bid submission. Further, public improvement construction contract may not be awarded to a vendor who does not have a written plan for a drug-free workplace policy in compliance with Article 1D, Chapter 21 of the *West Virginia Code* and who has not submitted that plan to the appropriate contracting authority in timely fashion. For a vendor who is a subcontractor, compliance with Section 5, Article 1D, Chapter 21 of the *West Virginia Code* may take place before their work on the public improvement is begun.

ANTITRUST:

In submitting a bid to any agency for the state of West Virginia, the bidder offers and agrees that if the bid is accepted the bidder will convey, sell, assign or transfer to the state of West Virginia all rights, title and interest in and to all causes of action it may now or hereafter acquire under the antitrust laws of the United States and the state of West Virginia for price fixing and/or unreasonable restraints of trade relating to the particular commodities or services purchased or acquired by the state of West Virginia. Such assignment shall be made and become effective at the time the purchasing agency tenders the initial payment to the bidder.

I certify that this bid is made without prior understanding, agreement, or connection with any corporation, firm, limited liability company, partnership or person or entity submitting a bid for the same materials, supplies, equipment or services and is in all respects fair and without collusion or fraud. I further certify that I am authorized to sign the certification on behalf of the bidder or this bid.

LICENSING:

Vendors must be licensed and in good standing in accordance with any and all state and local laws and requirements by any state or local agency of West Virginia, including, but not limited to, the West Virginia Secretary of State's Office, the West Virginia Tax Department, West Virginia Insurance Commission, or any other state agencies or political subdivision. Furthermore, the vendor must provide all necessary releases to obtain information to enable the Director or spending unit to verify that the vendor is licensed and in good standing with the above entities.

CONFIDENTIALITY:

The vendor agrees that he or she will not disclose to anyone, directly or indirectly, any such personally identifiable information or other confidential information gained from the agency, unless the individual who is the subject of the information consents to the disclosure in writing or the disclosure is made pursuant to the agency's policies, procedures and rules. Vendor further agrees to comply with the Confidentiality Policies and Information Security Accountability Requirements, set forth in <http://www.state.wv.us/admin/purchase/privacy/noticeConfidentiality.pdf>.

Under penalty of law for false swearing (*West Virginia Code* §61-5-3), it is hereby certified that the vendor affirms and acknowledges the information in this affidavit and is in compliance with the requirements as stated.

Vendor's Name: WV ASSOCIATES LLCAuthorized Signature: Will F. [Signature]Date: 3/31/09



Company Overview

WYK Associates, Inc.



associates, inc
architecture
planning

William E. Yoke, Jr., AIA – President
James B. Swiger, AIA – Vice President



Who We Are:

- WYK Associates, Inc. is a six-person architectural and planning firm serving a wide variety of commercial, religious, educational, civic and industrial clientele. Carleton Wood, Jr. was a third generation architect. His grandfather's firm had roots in North Central West Virginia dating back to the early twentieth century. William Yoke, Jr. and Howard Kelley partnered with Mr. Wood in 1974 to form WYK Associates, Inc. Our archives are filled with a century's worth of historic work.
- Mr. William Yoke, president of the firm, assumed that role in 1996 upon Mr. Wood's retirement. Mr. Kelley had previously retired in the early 1990's.
- Mr. James Swiger, joined the firm in 2005 and became a principal and vice president in 2008.

Our Project Philosophy:

- Through collaboration with engineering consultants we address the needs and schedule requirements of each client.
- We provide thorough planning in all areas of each project to fit the individual requirements for a positive impact on both the natural and built environments. Energy conservation and product safety are very important concerns.
- Our client's requirements for quality, service and value are the driving force behind each decision. Open communication and teamwork are our guide words for each project.

Project Management:

- We carefully evaluate the client's program, design concerns, budget, funding sources, and other available data to assure a clear understanding of each project.
- We incorporate input from our client and consultants to establish the budget and schedule. These facets are updated during each stage of project development to insure our client's parameters are met.
- WYK's principals engage and manage the entire project team, from concept through occupancy. WYK Associates, Inc. has an outstanding reputation for providing construction administration services along with maintaining an excellent rapport with contractors.



Project Team
WV Army National Guard – Camp Dawson



Project Team
WV Army National Guard – Camp Dawson

ARCHITECTURE

WYK Associates, Inc.

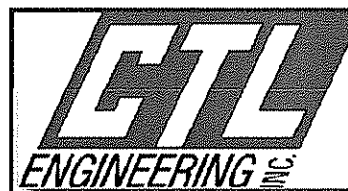
205 Washington Avenue
P.O. Box 1484
Clarksburg, WV 26301
(304) 624-6326
(304) 623-9858 fax
bill@wykarchitects.com



CIVIL ENGINEER

CTL Engineering of West Virginia, Inc.

733 Fairmont Road
Morgantown, WV 26501
(304) 292-1135
(304) 296-9302 fax
pgallagher@ctleng.com



STRUCTURAL ENGINEER

Allegheny Design Services, Inc.

102 Leeway Street
Morgantown, WV 26505
(304) 599-0771
(304) 599-0772 fax
dave@alleghenydesign.com



HVAC / ELECTRICAL / PLUMBING ENGINEER

CMA Consulting Engineers

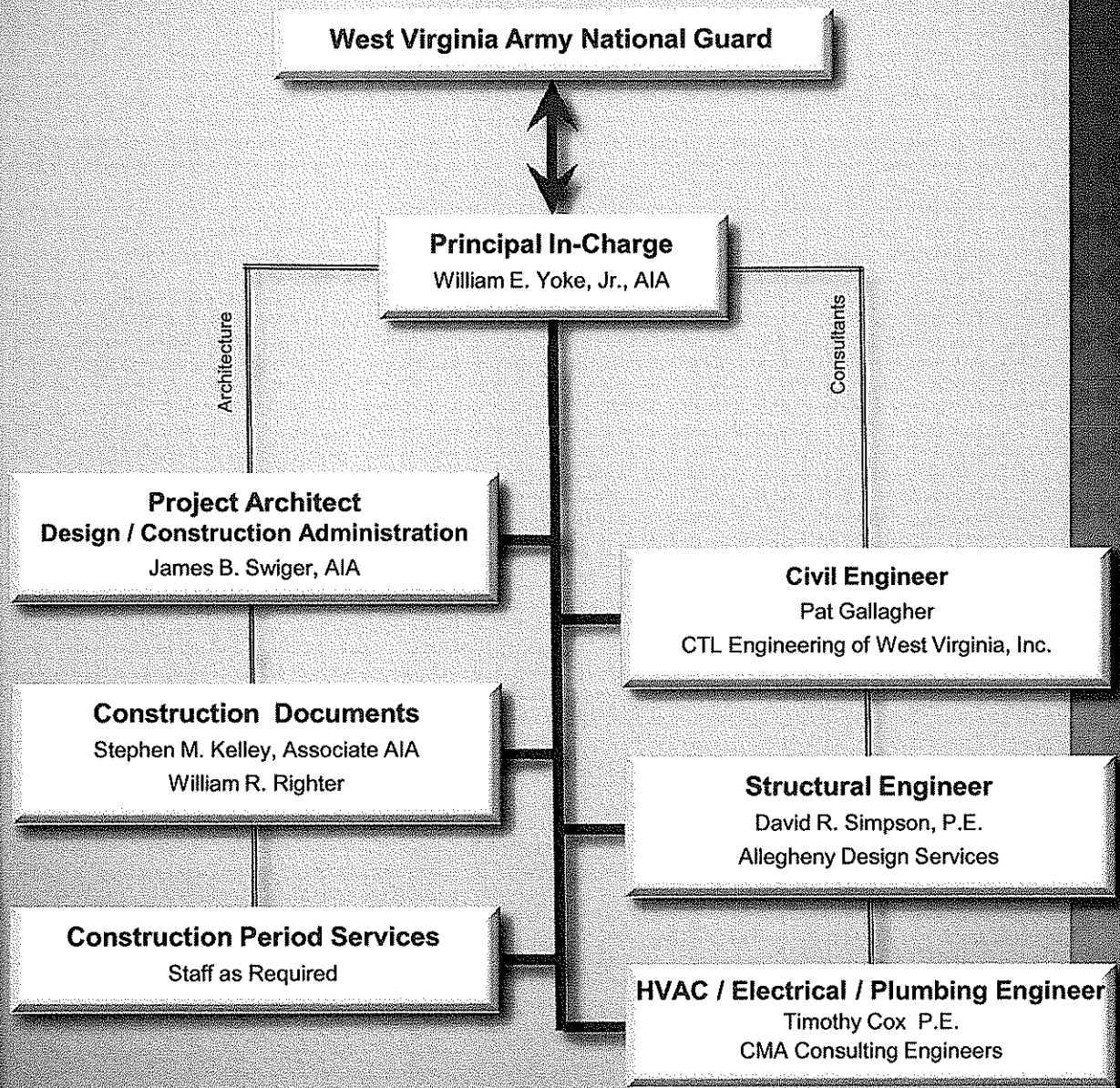
5 Riddle Court
Morgantown, WV 26505
(304) 598-2558
(304) 598-2472 fax
tcox@cmawv.com

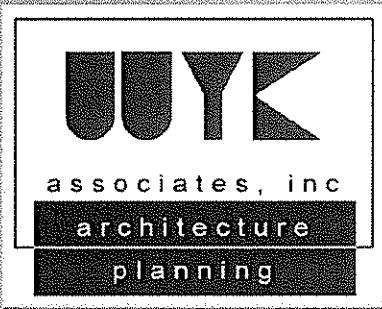




Team Organization Chart

WV Army National Guard – Camp Dawson





WYK's Design Approach to Your Project
WV Army National Guard – Camp Dawson

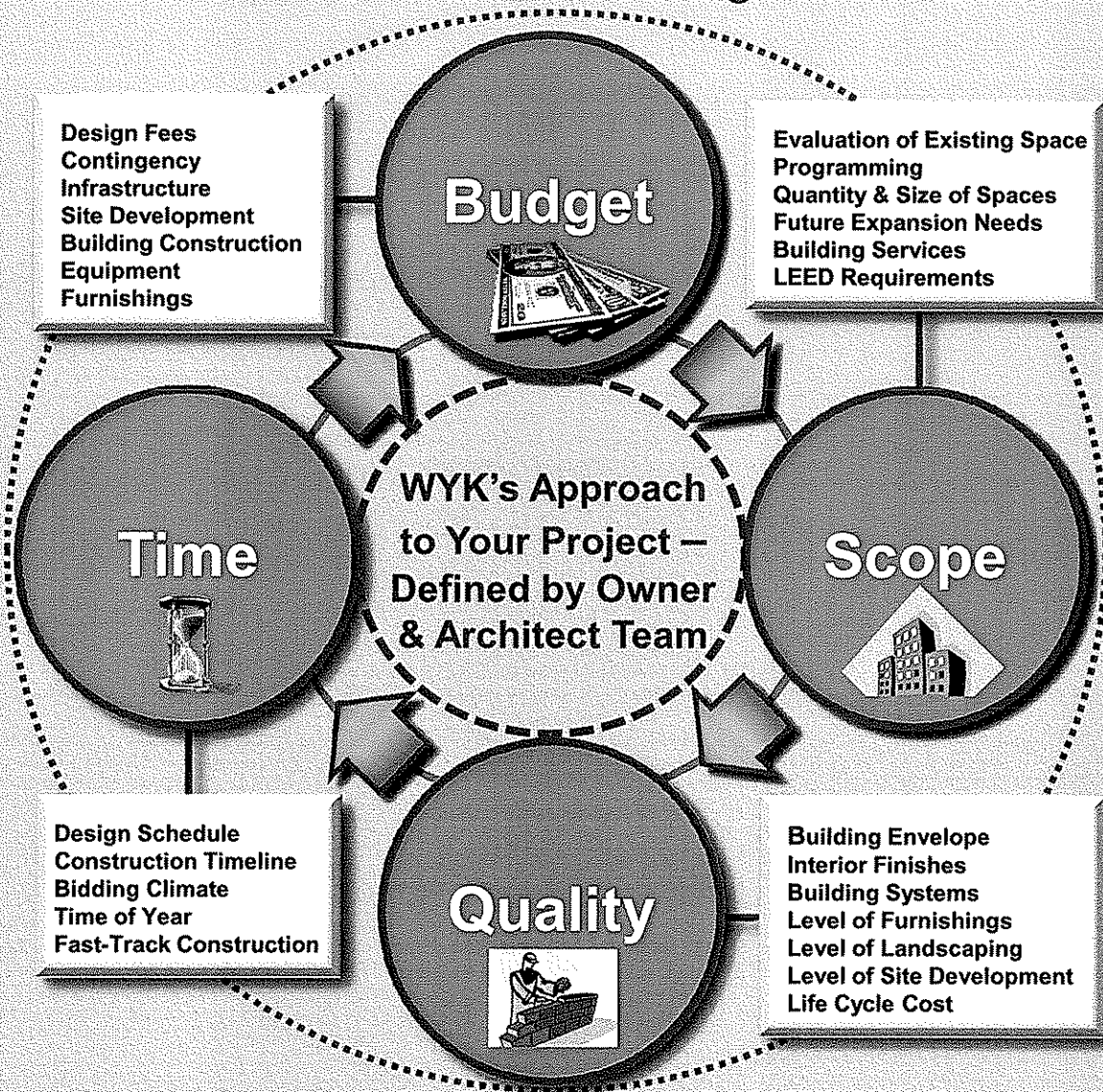


associates, inc
architecture
planning

WYK's Approach to Your Project

WV Army National Guard – Camp Dawson

Architecture is a Balancing Act.....



.....A Change In One Affects the Others



Projects
WYK Associates, Inc.



associates, inc
architecture
planning

Clarksburg Harrison Regional Housing Authority Office Building

Clarksburg, West Virginia

Clarksburg Harrison Regional Housing Authority Office Building

Size: 10,000 S.F.

This facility for Clarksburg's Housing Authority houses their corporate and program offices, as well as, providing meeting and conference facilities. In 2006 the successful combination of the city and county housing authorities was accomplished in part due to the flexibility of this building's design.

As one of the first new facilities to be built in the historic Glen Elk section of Clarksburg as part of the area's recent revitalization program, it is serving as a catalyst for more development.

Special attention was given to the building's massing, composition, and detailing of materials to define a character harmonious with the architectural context of the neighborhood. It reflects design elements of the historic railroad station it faces across the street.





associates, inc
architecture
planning

Pressley Ridge Dormitories Clarksburg, West Virginia

Pressley Ridge Dormitories for
Kappa Sigma Pi of WV, Inc.

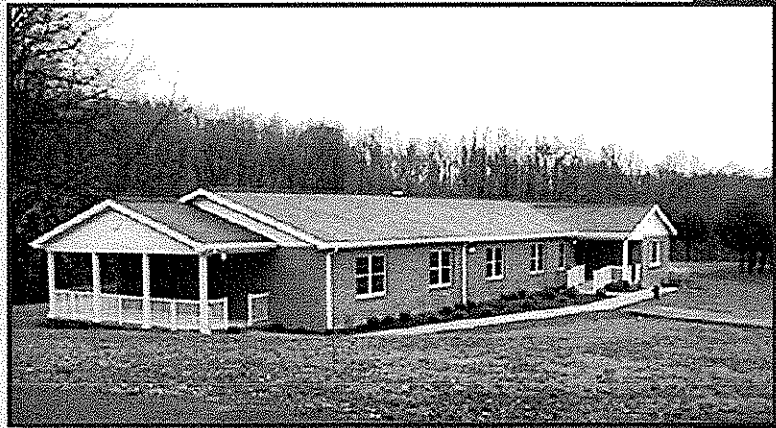
Size: 10,400 S.F.

These two housing facilities were designed for Kappa Sigma Pi of WV, who leases these properties to Pressley Ridge Schools of Northern West Virginia. One building houses male, and the other houses female, special needs students for long term residential care.

Each unit accommodates 10 to 12 students with 6 double bedrooms and a communal bathroom. A day room and training kitchen greet those entering the buildings. Additionally each unit provides office space and storage, three bedrooms and a separate bathroom for staff/counselors.

Located on this beautiful 107 acre family farm which was originally developed as a golf course and country club, Kappa Sigma Pi has served the residential needs of disadvantaged youth since 1921. These dormitories reflect the school's residential mission, remain sensitive to the existing context of the campus, yet insure the safety of all.

The design intent was to keep the buildings to a residential scale to help the residents have a "sense of home" in lieu of an institutional type structure. This was accomplished by the use of brick, pitched roofs, standard double hung windows and a covered porch placed at each end of the structures.



Girls' Dormitory



Boys' Dormitory



associates, inc
architecture
planning

Harrison County Bank Branch Office

Nutter Fort, West Virginia

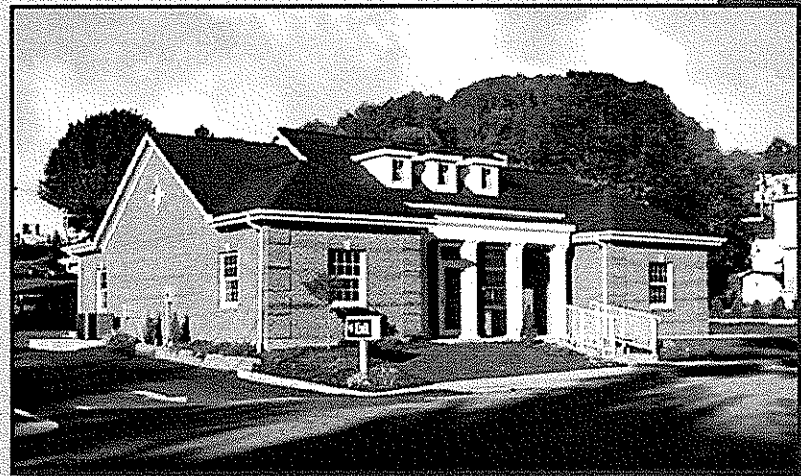
Harrison County Branch Bank

Size: 2,100 S.F.

The Harrison County Bank in Nutter Fort is the fourth branch bank of this well established local banking institution. Since it serves their image and needs so well, they are building the same plan in Clarksburg.

The character of the building housing this full-service branch bank emphasizes a familiar form composed of traditional elements and materials fused with contemporary technology and focus.

The scale of the building is appropriate to the town's main street. The vaulted interior lobby, intended to evoke the feel of a grand traditional bank lobby, is defined by its proportion and ample light from the building's three dormers. While the facility embraces imagery, it also houses complete state-of-the-art security and system's infrastructure.



❖ This building is featured on the Belden Brick's website. www.beldenbrick.com



associates, inc
architecture
planning

West Union Bank Branch Office Harrisville, West Virginia

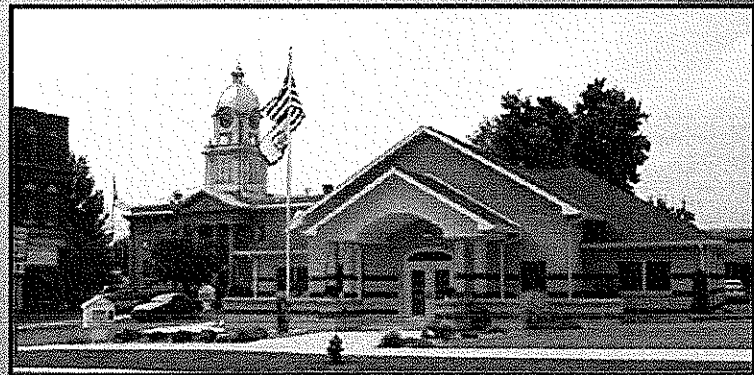
West Union Bank Branch Office

Size: 3,500 S.F.

The Harrisville branch of the West Union Bank completed in 2002 is a state of the art, full service banking facility containing a welcoming lobby, office spaces, a conference room, staff support spaces, a biometric access controlled safety deposit box vault, multi-lane drive-thru, and a drive-up ATM.

The facility occupies a prominent location on Harrisville's Main Street, where the front facade provides the bank with a strong public presence. The front facade is defined by the strength of the entry element which is initiated by a pair of low walls and the covered portico. It continues into the building's lobby where a vaulted, up-lighted ceiling accentuates the central interior space.

The building's materials and scale are harmonious with its immediate context. The formal symmetry of the building's massing, and the brick masonry's colors develop a subtle dialogue with Ritchie County's historic courthouse, and are instrumental in shaping the character of this small town bank building.





associates, inc
architecture
planning

West Virginia Army National Guard Fixed Wing Training Site

North Central WV Airport, Bridgeport, West Virginia

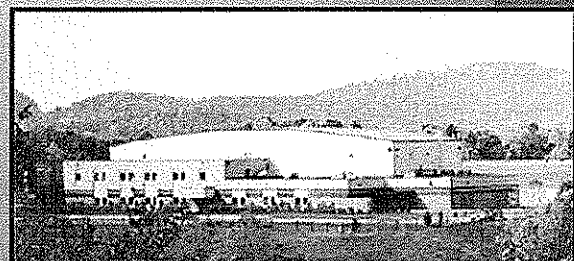
West Virginia National Guard Armory Board

Size: 37,000 S.F.

With Sponsorship from Senator Robert C. Byrd, the West Virginia National Guard established the state of the art personnel training facility totaling \$6.4 million in construction costs in 1996. Here students and instructor pilots from the fifty states and Guam train and certify on three different types of transport aircraft.

A wide hangar and an innovative hangar door system allow quick access to any one of five airplanes without disturbing other aircraft. Each aircraft has a dedicated manufacturer's support and maintenance team with their own work space. The two story masonry annex accommodates administration staff, instructor pilots, and instruction/simulator rooms.

The hangar proper is a steel frame structure with a clear span of the entire 210 foot hangar width. A prefabricated insulated metal wall system with translucent thermal panels provides glare-free natural light with little or no maintenance. This was a part of the project's energy cost containment plan.





associates, inc
architecture
planning

Broadus Hospital

Philippi, West Virginia

Broadus Hospital

Size: 45,000 S.F.

In 1999 this "new" Broadus Hospital replaced a large outdated 1950's era facility, located on the Alderson-Broadus College Campus. The facility was relocated to a more accessible and functional site off campus, providing a more visible profile, ample parking and more direct access from highways for emergency services.

The new hospital is a model for rural primary care facilities, providing a multi-function building compliant with current standards and is designed to address the modern needs of the smaller community.

The scale, massing and materials are considerate of the rural setting of the building and they enhance the residential nature of the long term care facility component, where providing familiar imagery is a key conceptual element.

The Services provided include:

Rural Health Clinic

Specialty Clinic

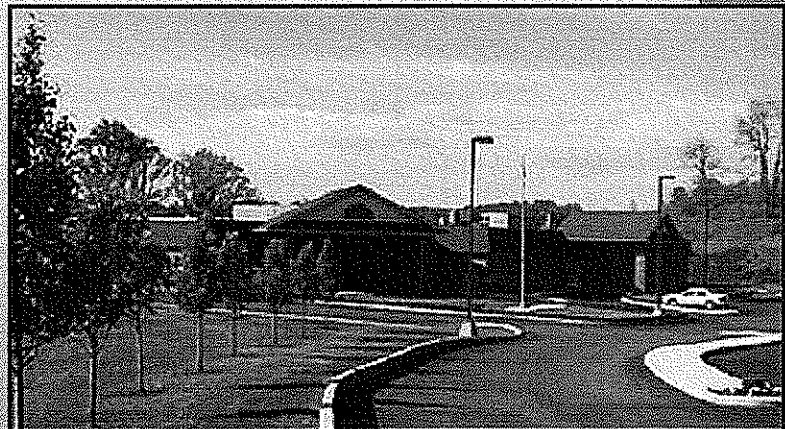
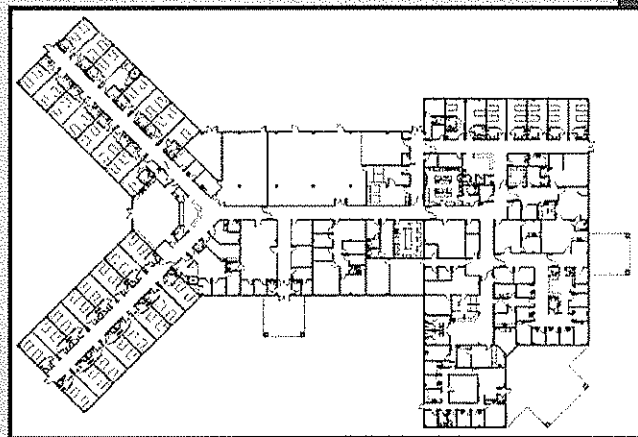
Emergency Room

12 Acute Care Beds

60 Long Term Care Beds

Laboratory

Pharmacy





associates, inc
architecture
planning

Harrison County Bank Branch Office

Bridgeport, West Virginia

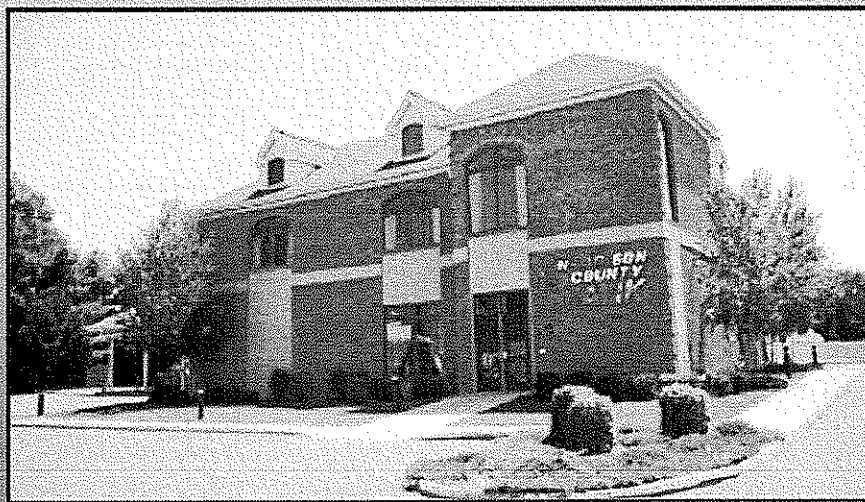
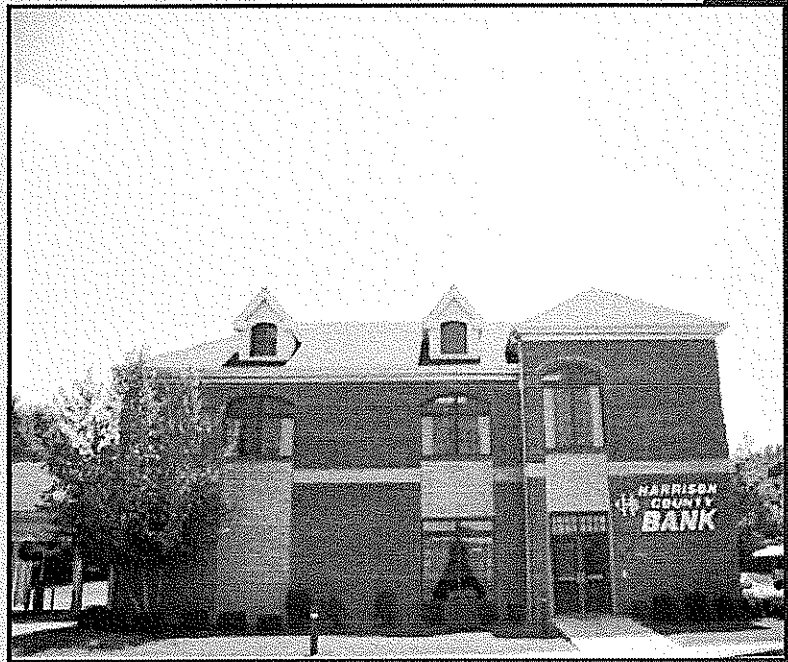
Harrison County Bank Branch

Size: 6,000 S.F.

Eager to tap the growing business opportunities of Bridgeport, WV and the surrounding area, the Harrison County Bank commissioned WYK Associates, Inc. to design a branch facility that took advantage of their prominent site, yet was appropriate to the scale of the adjacent residential neighborhood.

The first floor provides space for complete financial services including a drive-thru, ATM, and bank offices. The second floor is occupied by the Bank's lending offices and closing rooms with the remaining space available for lease.

The building is completely ADA accessible with an elevator surrounded by a wrap-around staircase.





associates, inc
architecture
planning

Davis Memorial Hospital – Cancer Center

Elkins, West Virginia

Davis Memorial Hospital Cancer Center

Size: 4,200 S.F.

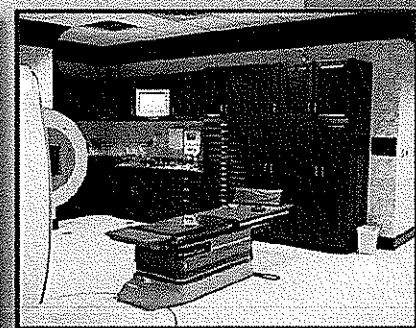
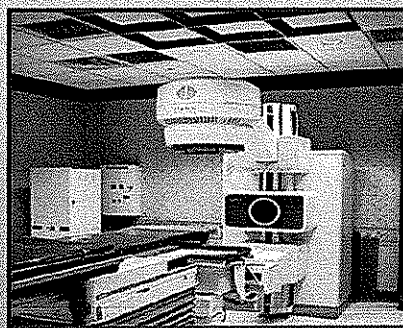
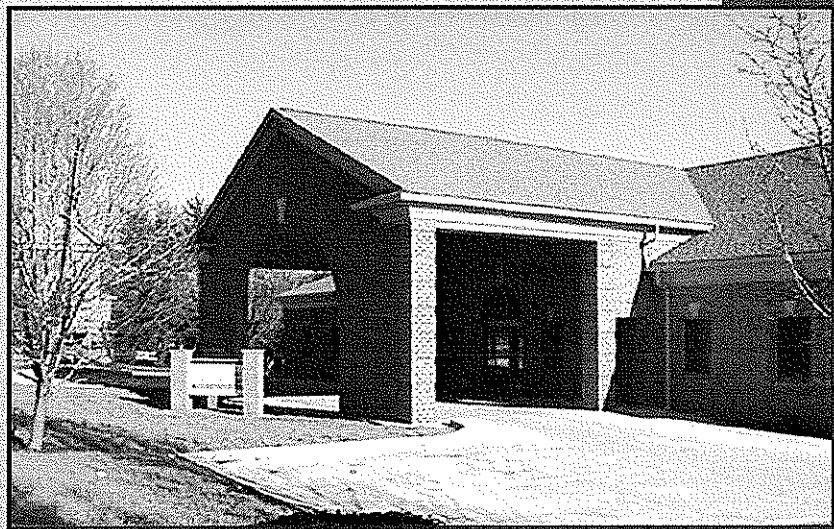
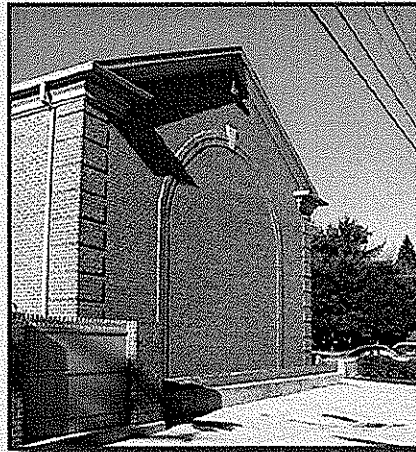
CONSULTANT:

Andrew G. Bukovitz
Radiological Physics Service,
Inc.

Designed as an integral part of an existing hospital campus, this Cancer Treatment Center uses materials and massing similar to surrounding buildings. Masonry quoins add interest to the building's simple footprint.

The client's goal was to combine nuclear and experimental medicine with an intimate, residential atmosphere to promote maximum healing. Interior finishes and furnishings soften the medical setting.

Access is paramount for both the patient and their caregivers, who await them during treatment. The porte-cochere features a stilted round arch with contrasting keystone, which is repeated in a reduced scale for the entry. The flat arches of the windows also use the contrasting keystone. The buildings' masonry back wall, which is visible from other hospital campus facilities, exhibits the same stilted arch with contrast detail as a detail in the masonry.





associates, inc
architecture
planning

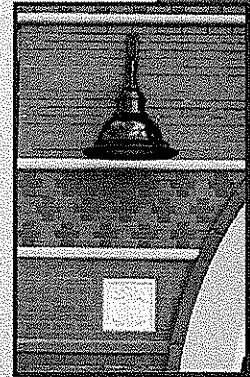
Christie-Cutlip Office Complex Bridgeport, West Virginia

Christie-Cutlip Office Complex

Size: 12,000 S.F.

Jim Christie and David Cutlip entrusted WYK to design a new office building for their business in the new prestigious Charles Pointe Development directly off the I-79 Technology Corridor. Their location is highly visible from the Harrison-Marion Airport and the I-279 connector to the airport. The client wanted a distinguished and comfortable modern design that incorporates historic/traditional architectural features.

The welcoming arched entry of the structure is flanked by a distinguished soaring clock tower to give the building presence within its surroundings. The brick complex is wrapped with intricately detailed ribbon bands that reflect a common building practice of yesteryear. Dark tinted aluminum storefront windows provide views to the majestic surrounding hills and the arriving and departing aircraft. These energy efficient windows provide contrast to the brick textures while reducing heat gain and glare within the offices. The large overhangs provide protection to the façade from the elements as well as reduce direct heat gain in summer months.





associates, inc
architecture
planning

Bank of Gassaway – Flatwoods Branch

Flatwoods, West Virginia

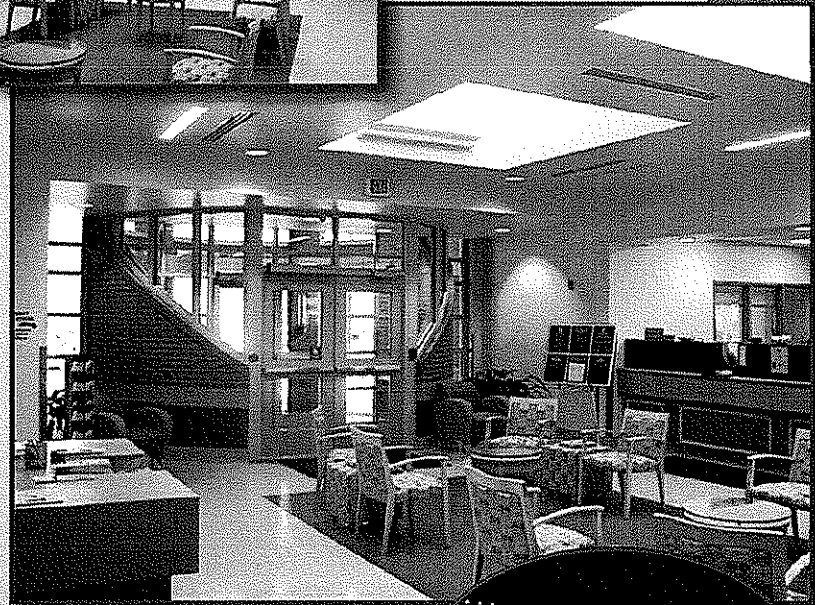
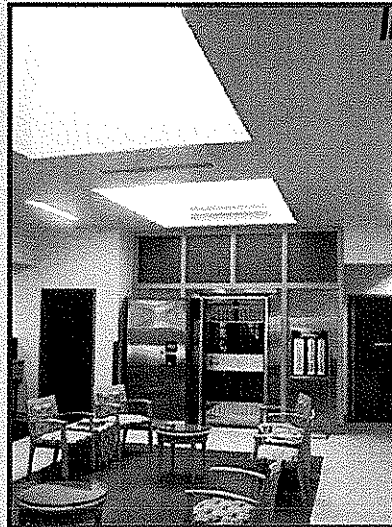
Bank of Gassaway – Flatwoods Branch

Size: 4,600 S.F.

The Bank of Gassaway hired WYK to design a new branch bank located on a quickly growing commercial strip which is highly visible from Interstate 79. The Owner wanted a very unique building that would be identifiable as a bank within its setting both day and night. Yet they desired to have it stand out among its commercial retail neighbors.

The structure has a very distinctive entry "cylinder" which gives the impression of strength and security from the exterior but as one enters, it quickly tapers away leading the visitor into the spacious day-light flooded lobby centered on axis with the vault.

The building utilizes dark tinted fenestration to increase privacy as well as coupled with the large overhang reduces solar heat gain. The facility was designed with many "green" concepts in mind with natural day-lighting in the lobby, office, meeting spaces and even the drive through canopy. Paperless drywall was used throughout the interior, reducing the risk of mold growth. By the use of environmentally friendly paints, floor coverings, structural components and exterior low maintenance materials does not only make this facility environmentally friendly to its occupants today but for generations to come. Eventually when the building has served its purpose and meets its demise, much of it can be recycled.





associates, inc
architecture
planning

Vienna Public Library Addition Vienna, West Virginia

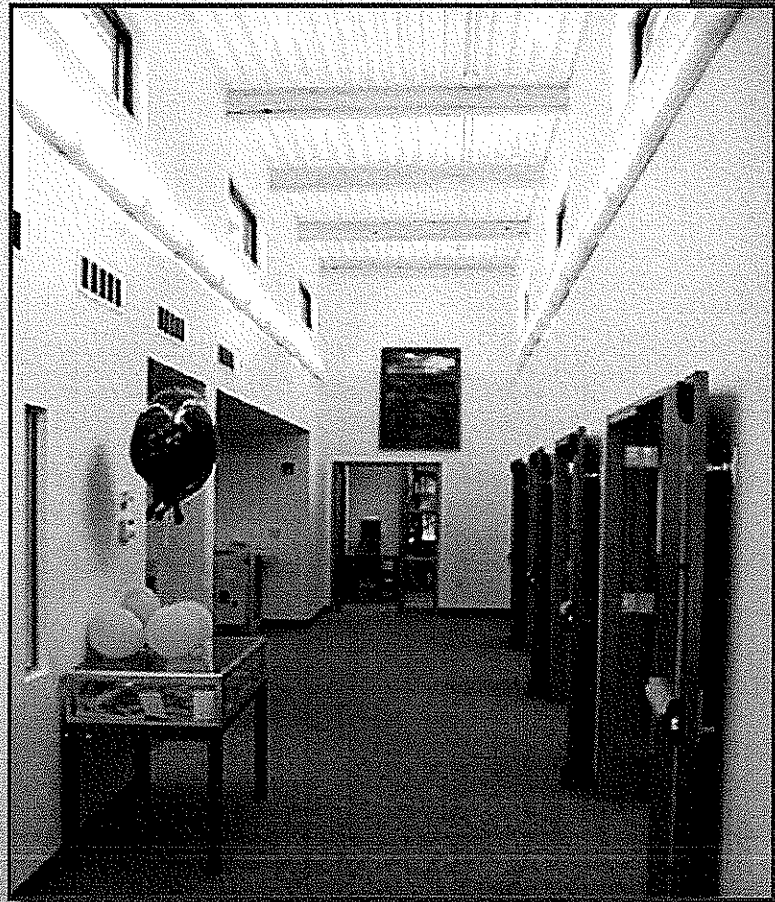
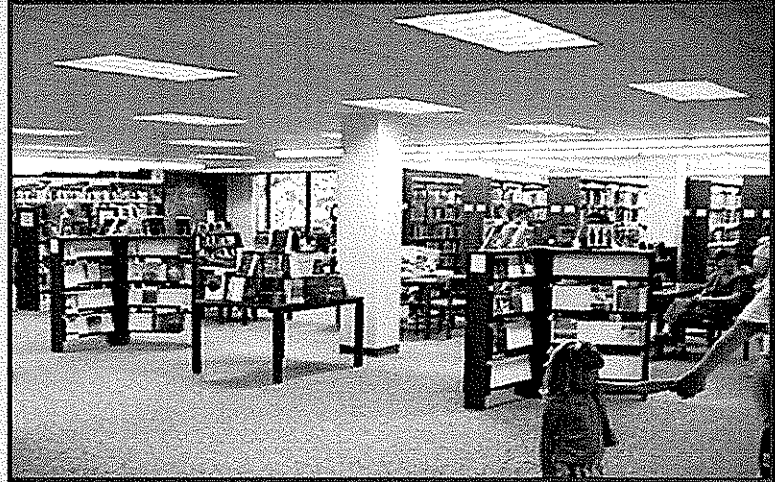
Vienna Public Library Addition

Size: 5,200 S.F.

This first construction phase enhances visibility from the main street and orients the entry to the river. Doubled book stack capacity, natural lighting, and an open layout focus on modern library functions. Meeting spaces, now also doubled, and fully accessible restrooms are all zoned to be available for public use during non-library hours. Many civic organizations make use of this added meeting space within their community.

The use of skylights and expansive glass opened up the interior to give an open airy feeling which maximizes the views to exterior and provides maximum flexibility of the space.

A second development phase, when adjacent property is available, will relocate the main entry and double the library's on-site parking.





associates, inc
architecture
planning

Bridgeport Public Library Bridgeport, West Virginia

Bridgeport Public Library

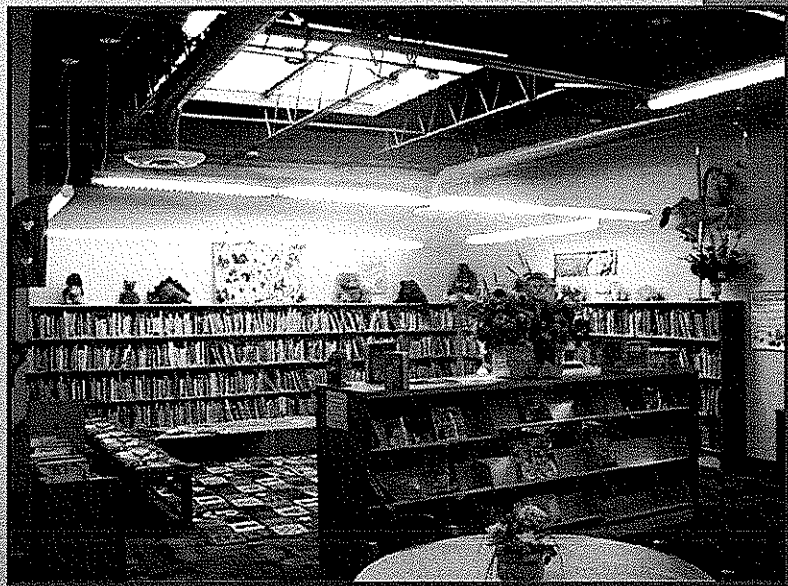
Size: 1,500 S.F.

Recognized as one of the busiest per capita in the nation, Bridgeport Public Library is housed in a former insurance company office building.

With this project they renovated an existing storage area to create a new Children's Section and to improve interior traffic patterns. It included some demolition and new partitions; the addition of a pyramid skylight; specialized high efficient lighting; interior finishes; mechanical systems; upgraded wiring for their power and security systems and expanded communications connections.

The use of multiple primary and secondary colors coupled with the use of natural light makes this space inviting for children and their parents alike.

The Library's daily operations and services were maintained throughout the project by carefully coordinating the construction schedule with their patron programs. WYK worked with the Contractor to ensure they coordinated the work schedule with delivery of the library equipment provided by the Owner.





associates, inc
architecture
planning

Salem Elementary School Addition

Salem, West Virginia

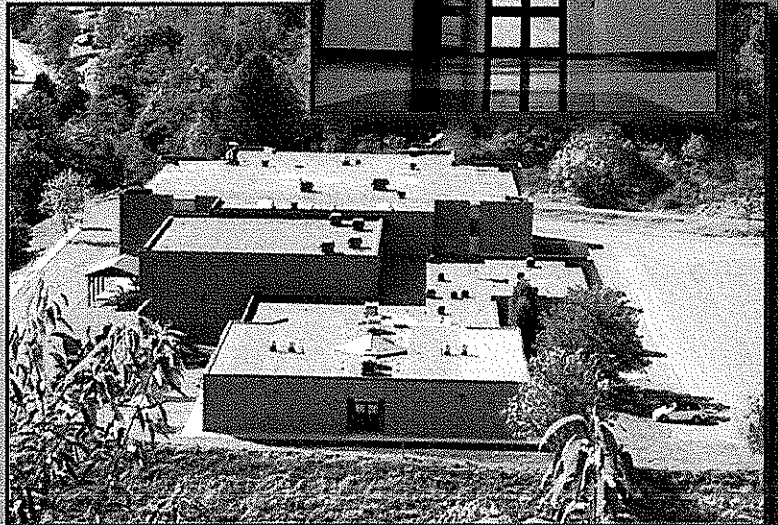
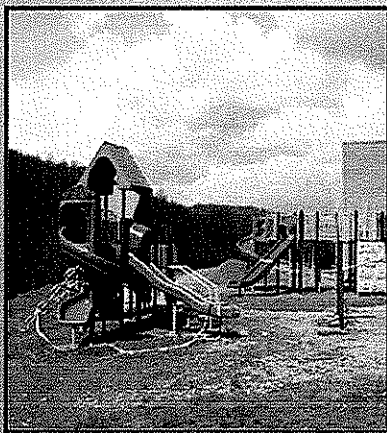
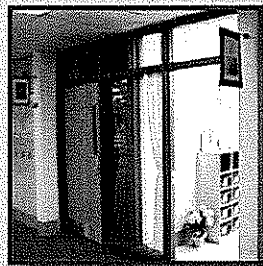
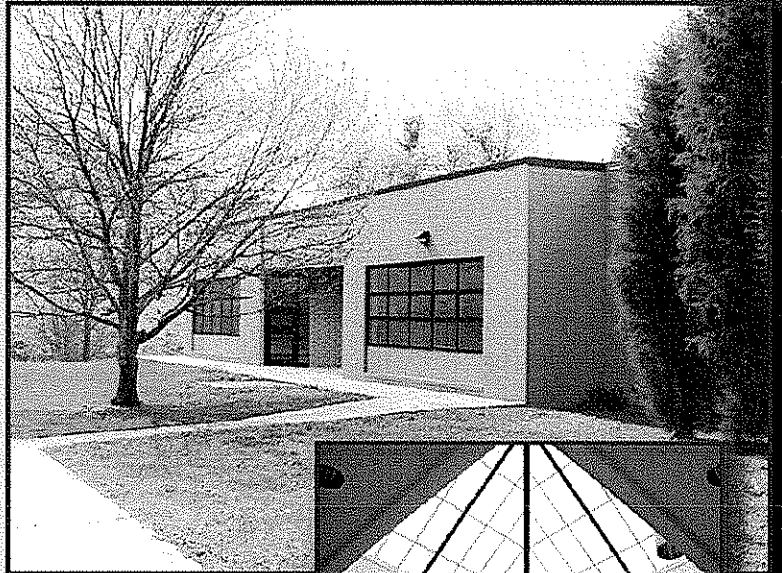
Salem Elementary School Addition

Size: 6,400 S.F.

In preparation for the conversion of Salem Middle School to serve as Salem Elementary School, four early childhood classrooms were added to the existing building. The addition used exterior materials that match and compliment the original building.

The four classrooms are arranged around a translucent pyramid skylight, which serves as a focal point for the Early Childhood Wing. Each classroom is highlighted by primary colors which "spill" into the room from the central space.

The project also included ADA improvements and enclosure of "modified open concept" classrooms in the existing building.





associates, inc
architecture
planning

Peterson - Central Elementary School

Weston, West Virginia

Peterson-Central Elementary School

Size: 43,000 S.F.

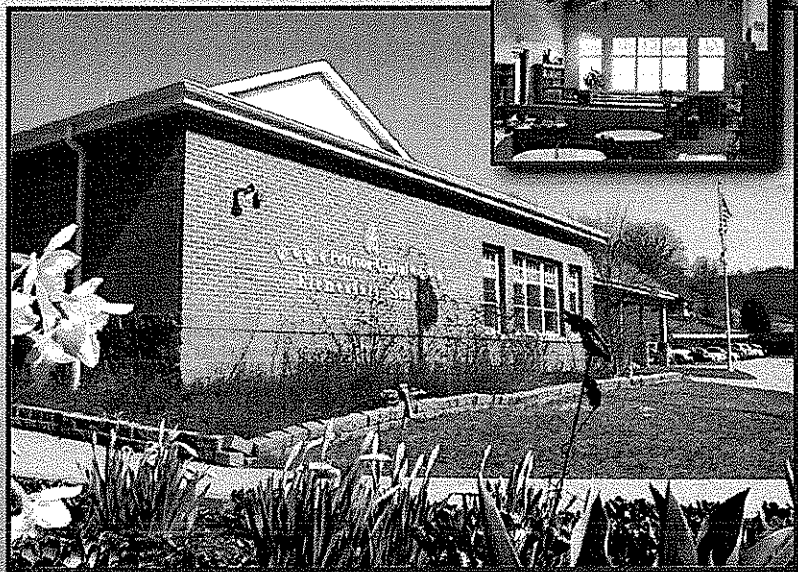
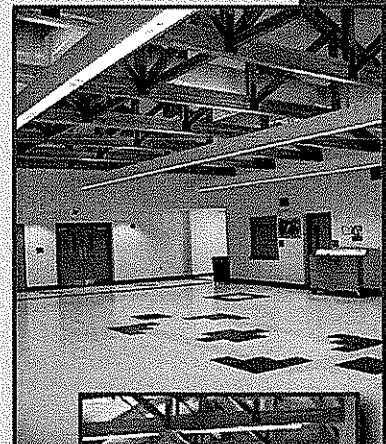
This Elementary School consolidated the greatly over crowded Peterson Elementary and Central Elementary Schools, housing students from Kindergarten through Fourth Grade.

Primary design objectives include:

- A. Design for Architectural Context regarding the established residential neighborhood.
- B. Allow the facility to double as a community center.
- C. Provide the capacity for expansion.

These goals are achieved through the implementation of brick masonry, hip roof elements and a scale for the primary facade consistent with the quaint existing neighborhood's contextual fabric. Compartmentalizing the building, allows the community public access to recreational areas as well as the media center, while maintaining security and privacy in the instructional spaces.

The interior environment employs a contemporary application of vibrant colors, exposed structural elements and naturally lighted spaces. The materials and their placement provide for ease of maintenance and can be readily updated as the educational and community needs adapt and expand.





associates, inc
architecture
planning

West Union Bank – Newpointe Clarksburg, West Virginia

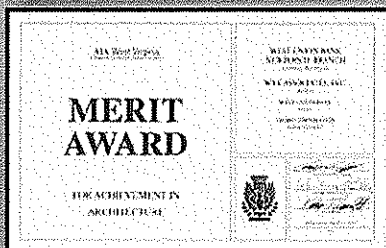
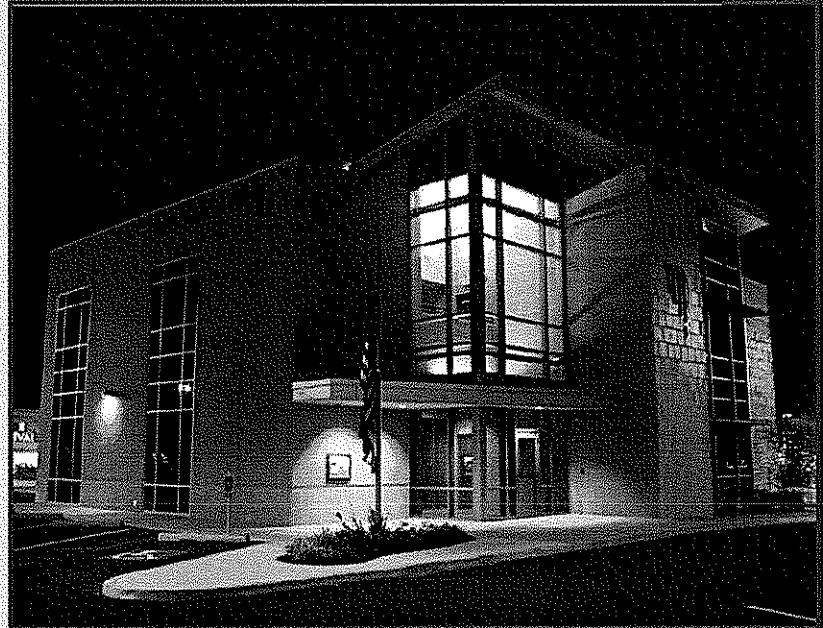
West Union Bank - Newpointe

Size: 9,000 S.F.

The West Union Bank entrusted us to design a branch in a new market area. Their location, in the middle of a major commercial development along Interstate I-79, presented several challenges. The client wanted a distinct design that would stand out among its neighbors, who are primarily restaurant & retail businesses. The primary building elevation faces on the main road, while the access point is from a frontage road "behind the building."

The design uses a combination of glass curtain wall with brick and monumental masonry units to present a very contemporary image. The building is sited to separate drive-thru and walk in traffic and create a comfortable, safe traffic pattern. Because of the building orientation, the glass elevations require the use of solar glazing and a brise soleil system to reduce heat gain and glare in the offices.

Construction began in October of 2004 and the Owner took occupancy in August 2005.



2007 AIA West Virginia
Merit Award for Design Excellence



architecture planning historic preservation urban design

West Pike Street Parking Facility Clarksburg, West Virginia

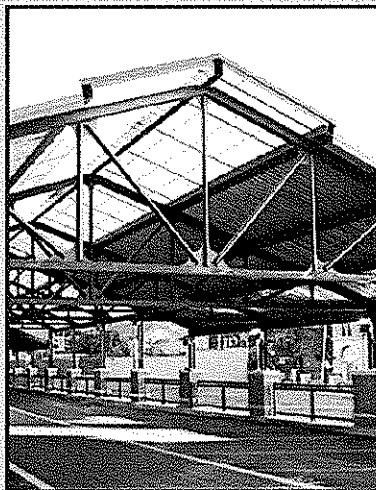
West Pike Street Parking Facility

Size: 57,000 S.F.

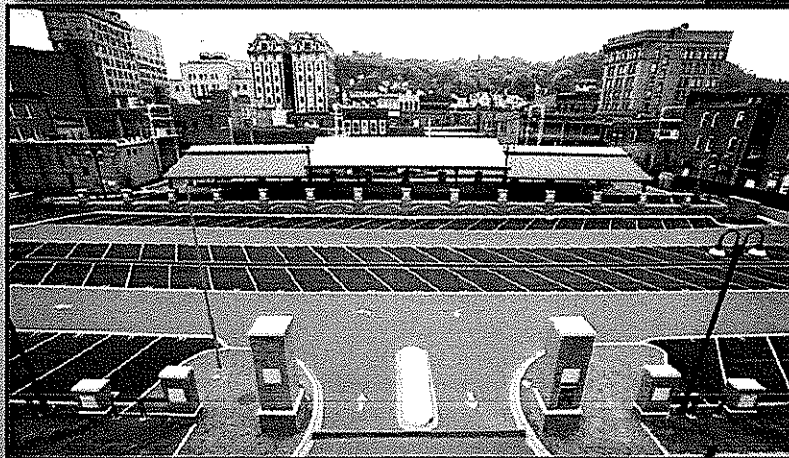
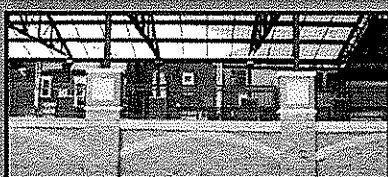
AAC or Associated Architectural Consultants, PLLC is a collaboration of WYK Associates, Inc. and Ralph Pedersen Architect founded in 2004, this partnership combines the unique strengths of two local architectural firms to provide design and planning services for projects in Clarksburg and Harrison County.

This project consisted of the demolition and abatement of all the long-vacant, dilapidated buildings in the 300 block of West Pike Street, one of Clarksburg's main downtown thoroughfares. An historical study of these buildings was completed and reviewed by the State Historic Preservation Office prior to demolition.

Underground utilities and new storm water management created an unencumbered site for 126 parking places on two levels. The upper level entered from Traders Avenue is covered with translucent panels creating a "band shell." Lower level entry is from Pike Street. Concrete retaining walls, decorated brick pillars, accessible stairways, easy maintenance landscaping, programmable lighting, user friendly electronic parking fee collection, and stamped asphalt paving create accessible parking. The facility's design complements all the adjacent properties, both historic and modern. A variety of outdoor activities are easily held here, enhancing the city's economy and livability.



2008 AIA West Virginia — Merit Award for Design Excellence





associates, inc
architecture
planning

Information Manufacturing Corporation

Cowen, West Virginia

Information Manufacturing Corporation (I.M.C.)

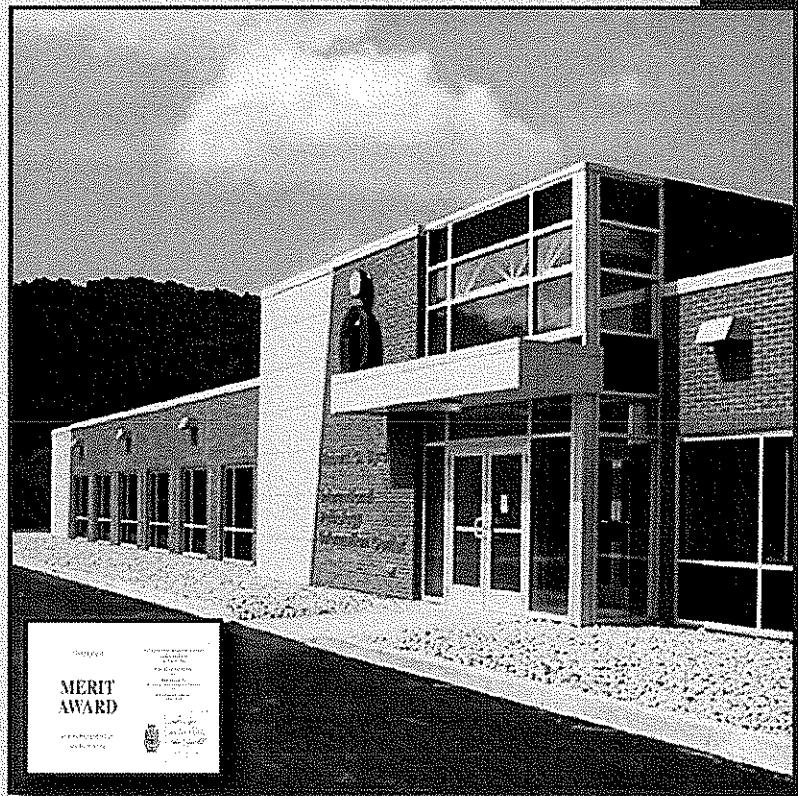
Size: 18,000 S.F.

With Sponsorship from Senator Robert C. Byrd, the Webster County Development Authority commissioned this "state of the art" facility to house Information Manufacturing Corporation's regional operations. This company transforms data into business intelligence and manages electronic data for government agencies.

The facility embraces a "hi-tech" image through expressions of form and materials. Extensive use and thoughtful composition of architectural metal panels, large glazed panels, and geometric proportioning of the brick masonry are integral to the building's character. The concept of manufacturing information guided the functional interpretation of the building's interior. Demands of the company's activities dictated large, ultra-flexible spaces defining the majority of the form. The building combines this square footage with smaller spaces for offices, secure storage spaces and conference areas.

Much consideration was given to employing user-friendly materials and creating environments whose focus was on the comfort of the users. Strategies range from indirect lighting in data processing areas, to creating exterior views from virtually every workstation.

The important notion of sustainability is addressed through use of recycled steel, regional materials, and an innovative geothermal heat pump heating and cooling system.



2007 AIA-West Virginia - Merit Award for Design Excellence and Sustainable Design





Resumes

WYK Associates, Inc.



William E. Yoke, Jr., AIA, NCARB
President & Principal In-Charge



EMPLOYMENT SUMMARY

WYK Associates, Inc.	1978 - Present
WYK Architects	1974 - 1978
Whalen L. King, Architect	1973 - 1974
United States Navy	1969 - 1973
Giese Engineering	1968 - 1969

EDUCATION

Bachelor of Science – Pre-Architecture - 1968
Clemson University
Clemson, South Carolina

ARCHITECTURAL REGISTRATION

West Virginia	(Registration # 1566)
Virginia	(Registration #401-009314)
Maryland	(Registration #10172)
Pennsylvania	(Registration #RA-014502)
National Council of Architects	(Registration #23448)

PROFESSIONAL AFFILIATIONS

American Institute of Architects
National Council of Architectural Registration Boards (NCARB)
NCARB – Licensing Examination Committee
AIA-West Virginia – Two Term Past President
Past Chairman of Region II of NCARB
AIA-West Virginia Scholarship Committee
Fairmont State University – Architectural Technology Program – Advisory Committee
West Virginia Board of Architects – Three Term Past President and Current Member

CIVIC AFFILIATIONS

Harrison County Chamber of Commerce – Past Board Member
Long Time Member of the Madrigal Singers of Clarksburg
Vice President of Civil War Roundtable – Local Chapter
Long Time Contributor to the United Way of Harrison County, Inc.

HONORS & AWARDS

2008 Chairman's Award– Harrison County Chamber of Commerce
2008 Merit Award in Architecture from AIA-West Virginia for the West Pike Street Parking Facility in Clarksburg, WV (Co-Design Architect)
2007 Merit Awards in Architecture from AIA-West Virginia for the following:
West Union Bank at Newpointe, Clarksburg, WV
Information Manufacturing Corporation in Cowen, WV

Selected Projects

**West Virginia Army
National Guard Fixed Wing
Training Center**
Bridgeport, WV

West Virginia Air Center
Clarksburg, WV

Stockmeier Urethanes
Clarksburg, WV

Broaddus Hospital
Philippi, WV

Davis Cancer Center
Elkins, WV

Peterson-Central School
Weston, WV

**Information Manufacturing
Corporation**
Cowen, WV



James B. Swiger, AIA, NCARB
Vice President & Principal



EMPLOYMENT SUMMARY

WYK Associates, Inc.	2005 - Present
Blackwood Associates, Inc.	2000 - 2005
Gegner Architects	1997 - 2000
WYK Associates, Inc.	1996 - 1997

EDUCATION

Bachelor of Architecture -1996
University of Tennessee
Knoxville, Tennessee

ARCHITECTURAL REGISTRATION

West Virginia	(Registration # 3640)
National Council of Architects	(Registration #58982)

PROFESSIONAL AFFILIATIONS

American Institute of Architects
AIA-West Virginia – Director 2010 – Board of Directors
AIA-West Virginia ABC Pilot Program - Charter Member
National Council of Architectural Registration Boards
National Trust for Historic Preservation

CIVIC AFFILIATIONS

United Way of Harrison County, Inc. – Board of Directors
Kiwanis Club of Clarksburg – 2008/2009 President
West Virginia Kiwanis District – District 3 – Lieutenant Governor Elect, 2009/2010
Clarksburg Elks Lodge
Harrison County Chamber of Commerce - Education Committee
Salem Elementary School Nature/Fitness Trail – Project Manager
Salem International University Auxiliary
Salem Area Chamber of Commerce

HONORS & AWARDS

2008 Volunteer of the Year – Harrison County Chamber of Commerce
Selected "Generation Next: 40 Under 40" by the West Virginia State Journal in 2008
2008 Strathmore's Who's Who Worldwide Recipient
2008 Merit Award in Architecture from AIA-West Virginia for the
West Pike Street Parking Facility in Clarksburg, WV (Co-Design Architect)

Selected Projects

**Christie-Cutlip Office
Complex**
Charles Pointe, Bridgeport, WV

**West Pike Street Parking
Facility**
Clarksburg, WV

**Bridgeport Public
Safety Building**
Bridgeport, WV

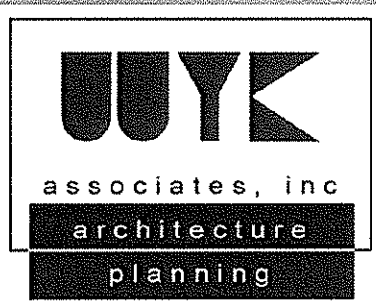
**Philippi Elementary School
Addition**
Philippi, WV

***City of Ripley Municipal
Building**
Ripley, WV

***Stonewall Resort Lodge**
Roanoke, WV

Bank of Gassaway
Flatwoods, WV

* Denotes Prior Experience



Stephen M. Kelley, Associate AIA
Project Manager



EMPLOYMENT SUMMARY

WYK Associates, Inc.	2007 - Present
Blackwood Associates, Inc.	2002 - 2007
Kurtz Construction	1999 - 2001
Philadelphia University Athletic Department	1996 - 2000
Eagle Lodge Golf and Conference Center	1997

EDUCATION

Bachelor of Architecture - 2000
Philadelphia University
Philadelphia, Pennsylvania

PROFESSIONAL AFFILIATIONS

American Institute of Architects
AIA-West Virginia – Associate Member

CIVIC AFFILIATIONS

Salem Area Chamber of Commerce – Board of Directors
Harrison County Development Authority – Board of Directors
Fort New Salem Foundation – Board of Directors
VFW Post 9151- Trustee & Lifetime Member

HONORS & AWARDS

Salem Area Chamber of Commerce 2006 Member of the Year
AIA-West Virginia Student Design Competition 1995 - Second Place
U.S Army Awards:

Army Achievement Medal
Reserve Component Achievement Medal
National Defense Service Medal
Global War of Terrorism Expeditionary Metal
Armed Forces Reserve Medal
Army Service Ribbon
Reserve Components Overseas Training Ribbon

Selected Projects

Harrison County Schools
Entries & Hardware
Replacement
Clarksburg, WV

United Hospital Center's
CCCC Building
Entry Replacement
Clarksburg, WV

Bank of Gassaway
Flatwoods, WV

***Renovation to**
Johnston School
Industrial Home of Youth
Salem, WV

Davis Memorial Hospital
Addition / Renovation
Elkins, WV

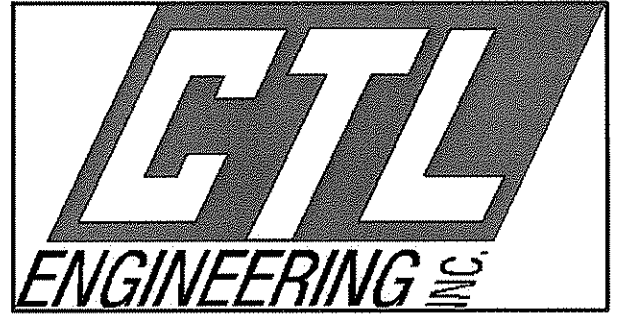
***New Veterans' Nursing**
Home Facility at
Louis A. Johnson
Veterans Hospital
Clarksburg, WV

* Denotes Prior Experience



Consultants
WYK Associates, Inc.

CTL Engineering of West Virginia, Inc.



CTL Engineering Inc.

An Employee Owned Company

CTL Engineering, Inc. (CTL Engineering) is a full service consulting engineering, testing, inspection, and analytical services company. CTL Engineering, formerly known as Columbus Testing Laboratory, was established in 1927 as an independent engineering testing laboratory serving the local community. During the early years, our expertise focused mainly on soils, foundation engineering, and construction testing and inspection services.



Business First Journal regularly lists CTL Engineering, Inc. as one of the top engineering firms in terms of employees and revenues generated. ***The Engineering News-Record*** ranked CTL Engineering Inc. among top 500 architectural and engineering firms in the nation. CTL Engineering maintains a staff of over 200 employees, including registered engineers, architects, chemists, environmental scientists, geologists, hydrologists, wetland scientists and technicians.

Today, CTL Engineering regularly performs services throughout all of West Virginia and in a majority of Mid-Atlantic and Midwestern states.

YEARS of SERVICE

CTL Engineering Inc. has been in business since 1927 and had been providing quality consulting engineering services for over 80 years. CTL Engineering of West Virginia will be celebrating it's 28th anniversary this year.

CTL Engineering Inc. provides ***consulting engineering services, testing and inspection services and offers a full-services analytical laboratory in-house.*** CTL also provides Geotechnical Engineering, Environmental Engineering Civil Engineering, Mining Engineering, Construction Inspection and Testing, Nondestructive Testing and Inspection, Forensic Science, Accident Re-Construction, Roofing Consulting, Product Testing, Laboratories, Analytical Chemistry, Materials Testing, and Metallurgy Services.

FOR MORE INFORMATION CONTACT US:

CTL Engineering of West Virginia, Inc.

733 Fairmont Road
Morgantown, WV 26501
(304) 292-1135 Phone
(304) 296-9302 Fax

510 C Street
S. Charleston, WV 25303
(304) 746-1140 Phone
(304) 746-1443 Fax

www.ctleng.com



Expertise

Mr. Gallagher serves as President of CTL Engineering of West Virginia, Inc. Projects successfully completed by Mr. Gallagher include: Geotechnical Investigations, Foundation Design Investigations, Dam Stability Analyses, Mine Subsidence Evaluations, Mineral Reserve Studies, Landslide Investigations, Mine Reclamation Designs, Failure Investigations, and Mining Permits.

Prior to joining CTL Engineering, Mr. Gallagher was the chief of the Abandoned Mine Reclamation Program for the State of Maryland, Department of Natural Resources, and Bureau of Mines. In addition, he was also responsible for the deep mine permit program and overall engineering/geologic support to the Maryland Bureau of Mines Program.

Education

B.S., Civil Engineering

Virginia Polytechnic Institute and State University, Blacksburg, West Virginia, 1975

B.S., Equivalent, Geology

Virginia Polytechnic Institute and State University, Blacksburg, West Virginia, 1975

Professional Registration / Certifications

Registered Professional Engineer, Ohio, # 48459, Maryland, # 13256, West Virginia, # 9297
Pennsylvania, # PG-044930-R

Certified Professional Geological Scientist, # 6575

Professional Surveyor, WV

Experience

A partial listing of Mr. Gallagher's relevant project experience includes:

Fayette Energy Facility, Masontown, PA

Project Manager responsible for overseeing the concrete, soils, aggregates, asphalt and bolted connections for the project site. CTL has provided specialty-testing including: soil resistivity testing, and Windsor Pin testing

American Bituminous Power Partners, LLP

Project manager for services involving permitting and environmental issues. Conducted on-going inspections and certifications of the impounding refuse facilities and all drainage/sediment control structures for all permitted facilities.

Warrior Run Generation Plant, Cumberland, MD

Project manager for the construction observation and structural steel inspection services for this project.

Allegheny Power Systems (open-ended contract for transmission distribution and power station projects)

CTL performs construction testing and observation, material testing, structural steel and surveying for various projects under this contract.

Cheat Lake Waste Water Treatment Plant Expansion, Morgantown, WV

Project Manager responsible for providing oversight and recommendations for this project. The project included increasing the capacity from 250,000 gallons/day to 750,000 gallons/day.

Chaplin Hill Sewer and Water System Expansion, Morgantown, WV

Project Manager responsible for overseeing quality assurance for corrosion protection, utility trenching, line expansion and construction methods for this project.

Project Manager for the following projects:

Canyon Mobile Home Park – System Upgrade
Foxwood Estates – Infiltration Investigation & Upgrade
Pierpont Property Development – Package Plant and Collection System
Glenmark Development – Package Plant
Kinsley Construction – Package Plant and Collection System
GENCO Land and Development – Package Plant and Collection System
Sheetz Convenience Store – Package Plant and Collection System
Silver Tree Estates – Package Plant and Collection System
B & H Properties – Package Plant and Collection System
City of Westover – Evaluation of Private System prior to city takeover
Morgantown Utility Board – Sewer Line Extension and Plant Expansion

Highways

PADOT, Open-End Contract

Project Manager/Engineer responsible for overseeing geotechnical investigations for 30 separate transportation projects.

Star City Bridge, Star City, WV

Project Manager/Engineer for geotechnical investigations, borings and road relocation during construction of the Star City Bridge.

WVDOH Open-End Contract

Project Manager/Engineer providing geotechnical support to 40 separate projects including new roads and landslides.

Allegheny Restorations, West Virginia

Provided geotechnical engineering, surveying services and shoring design, in coordination with the West Virginia Department of Transportation, for 3 covered bridge projects in West Virginia.

Schools / Hospitals

PATRICK GALLAGHER, P.E., C.P.G.S.

President

WVU Hospitals, Morgantown, WV

CTL provided geotechnical, surveying and civil site design support services in conjunction with WVDOH and WVU for a new access road and parking area design for surrounding hospital area.

WVU Wise Library

Project Manager/Engineer providing geotechnical oversight of investigations for the building foundation systems on the construction of a new six (6) story library, which included the design of an extensive tie-back/soldier pile wall system.

WVU Life Sciences Building

Project Manager/Engineer providing geotechnical oversight of the drilling and investigations and recommendations needed for the construction of the Life Sciences Building.

WVU Student Recreation Facility

Project Manager/Engineer providing geotechnical oversight for the drilling and investigations and recommendations performed for the construction of the \$34 M dollar recreational facility located on WVU campus.

WVU Eye Institute

Project Manager/Engineer providing geotechnical oversight for the geotechnical investigations and foundation recommendations performed for this \$5 M dollar patient care facility.

Physicians Office Center, WVU Hospital

Project Engineer responsible for the oversight of the geotechnical drilling and site investigations for this project.

Professional Affiliations

American Society of Civil Engineers

Society of Mining Engineers, of A.I.M.E.

Triangle Fraternity of Engineers, Architects, and Scientists

International Society for Soil Mechanics and Foundation Engineers

American Institute of Professional Geologists

Publications

“Mine Subsidence Stabilization In Steeply Dipping Seams In The Canadian Rockies. A Project Overview” Presented by Patrick E. Gallagher at the 19th Annual Conference of the Association of Abandoned Mine Land Programs Canaan Valley, WV August 17-20 1997

“Dynamic Compaction of Surface Mine Spoils to Limit Settlements Within Commercial Developments”, Presented Patrick E. Gallagher and C. K. Satyapriya, Constructing and Controlling Compaction of Earth Fills, ASTM Seattle, Washington July 1-3 1999

JAMES GOWARTY, JR.

Construction Services Manager

Expertise

As the Construction Services Manager for CTL Engineering, Inc., Mr. Gowarty is responsible for supervising field and laboratory technicians. He is also responsible for report writing for field and laboratory testing, project management, client contact, estimating, proposals and invoicing for Construction Services Department.

Mr. Gowarty's experience also includes surveying, pre-mining and pre-blast surveys, field supervision of drilling crews, Phase I Environmental Audits and radiation safety officer and branch safety officer. In addition, Mr. Gowarty is the Construction Materials Testing Supervisor, providing concrete, compaction, and aggregate testing and has over six years of experience with Nuclear Gauge Operation.

Education

B.S., Civil Engineering Technology
Fairmont State College; Fairmont, West Virginia, 1990

A.S., Mechanical Engineering Technology
Fairmont State College; Fairmont, West Virginia, 1990

Professional Registrations/ Certifications

West Virginia Department of Highways Certified Compaction Technician

West Virginia Department of Highways Certified Bituminous Concrete Technician

State of Maryland Certified Water Sampler

WVDOT Aggregate Sampler

NICET Level III Asphalt & Concrete

NICET Level II Soils

Certified Dipfloor Profiler Operator

12 Years with CTL Engineering Inc.

Experience

A partial listing of Mr. Gowarty's relevant project experience includes:

Cheat Lake Waste Water Treatment Plant Expansion, Morgantown, WV

Project Manager overseeing construction observation and materials testing and inspection for this expansion project.

Chaplin Hill Sewer and Water System Expansion, Morgantown, WV

Project Manager responsible for overseeing quality assurance, construction observation and materials testing and inspection for the utility trenching, line expansion and construction methods for this project.



Schools

Suncrest Junior High School Construction Project, Morgantown, West Virginia

Project engineer responsible for daily excavation work.

Westwood Middle School, Morgantown, West Virginia

Project engineer responsible for construction observation services at this site.

West Virginia University, Morgantown, West Virginia

Project manager for Construction Testing and Observation Services at the following sites:

- | Wise Library Retaining Wall
- | Student Recreation Center
- | Life Sciences Building

Frostburg State University, Cumberland, Maryland

Project manager for Construction Testing and Observation Services.

West Virginia Northern Community College, Weirton, West Virginia

Project manager for Construction Testing and Observation Services.

Bridges/ Transportation

U.S. 50 Bridge Replacements, Clarksburg, West Virginia,

Concrete technician for this project.

National Airport, Washington D.C.

Project engineer for dipstick floor profile testing for the layout of floor test sections and testing of random traffic floors.

Expertise & Work History

2009 – Present, Civil Department Manager, CTL Engineering, S. Charleston WV

1999 – 2009, Owner/Manager, Alliance Consulting Engineers & Surveyors,

Arvada/Longmont, Colorado

1991 – 1999, Vice President, Jehn Engineering, Arvada, Colorado

1986 – 1991, Associate, Kidde Consultants, Baltimore, Maryland

1983 – 1986, Vice President, Haese Corporation, Boulder, Colorado

1981 – 1983, Research Assistant, University Of Colorado, Boulder, Colorado

1976 – 1981 Civil Engineer, Fluor-Daniel Inc., Irvine, California

Mr. Moore has thirty years experience in design and construction in the fields of planning, civil engineering, structural engineering, general contracting, expert testimony, land development, surveying, landscape architecture, project and business management.

Presently Mr. Moore manages the civil engineering department of the CTL Engineering South Charleston WV office. This office performs consulting engineering in the fields of civil engineering, environmental engineering, geotechnical engineering and testing.

Prior to his current position Mr. Moore founded Alliance Consulting Engineers and Surveyors a consulting engineering firm with offices in Arvada and Longmont Colorado. Mr. Moore managed and directed multiple projects and employees in the fields of planning, civil engineering, structural engineering, marketing, business administration, land development, surveying, landscape architecture, water resources, design build and construction management.

During Mr. Moore's tenure with Jehn Engineering and Kidde Consultants he performed professional engineering duties encompassing civil and structural design, expert testimony, surveying, marketing, water resources, public presentations, project management, quality assurance and quality control. These professional engineering duties were performed for a diverse array of private and public clients and encompassed a broad spectrum of duties.

While employed by Fluor-Daniel Mr. Moore was a civil construction engineer on large power plant projects throughout the United States. Mr. Moore performed design-build civil engineering services on hydroelectric and gas plants in Virginia, Texas and Wyoming. These projects were in the hundreds of millions to billions of dollars in magnitude and were designed and built by Fluor-Daniel encompassing design, procurement, construction and implementation.

Education

B.S., Civil Engineering

West Virginia University Institute of Technology, Montgomery WV 1974-1978

M.S., Civil Engineering

Colorado University, Boulder CO 1981-1983

Professional Registration

Registered Professional Engineer, Maryland, # 15100; Nevada, # 19250; West Virginia; Wyoming, # 11010; Colorado # 22495; Alberta Canada # 98121

Listing of Mr. Moore's relevant project experience includes:

Residential Subdivisions and Commercial Sites

Mr. Moore has performed design, project management and construction management of numerous residential subdivisions and commercial sites in Maryland and Colorado. Residential subdivisions included small one to two lot subdivisions up to subdivisions with 400-500 lots. Commercial project experience includes banks, restaurants, multi-story commercial buildings, hotels, malls and car sale and maintenance facilities. These projects include annexation, zoning, planning, platting, road design, utility design, grading, drainage, storm water management, landscaping, development agreements, cost estimates, and construction.

Golf Courses

Mr. Moore was project manager, engineering designer and construction administrator for the City of Arvada West Woods Ranch public golf course encompassing an initial 18 holes and the later addition of nine more holes. This project also encompassed over 400 acres of residential development, design and construction of 1.5 miles of four-lane boulevard, major bridge design to pass 3500 cfs Ralston Creek, two miles of trail design, wetland mitigation, irrigation design pedestrian bridge and golf cart bridge designs.

Water Resources and Drainage Projects

Mr. Moore designed and performed construction administration on water resources and drainage projects for developers, builders, and municipalities, ditch companies and water districts. Practically every project requires a drainage report and plan encompassing storm water management, flood studies, Letters of Map Revisions (LOMAR's or CLOMAR's) or storm drain design. Several notable projects include the Ralston Creek/Croke Canal overpass, Church Ditch flow limiter, Farmers Highline Canal realignment, and various flood studies on creeks and rivers.

Landscape Architecture

Mr. Moore performed design of landscape plans on many residential and commercial projects including a design/build regional park for the Town of Erie, Colorado encompassing an all purpose athletic field, baseball field with bleachers, backstops and dugouts. Additional design build projects include Candlelight Ridge Estates (125 lots) and Ryan Ranch Subdivision (130 lots).

Colorado Department of Transportation Road Design

State road design projects include 2 miles of US 60 road design in Johnstown, Colorado; Platte River Bridge/Culvert replacement in Littleton, CO; US 119 road improvements in Black Hawk and Longmont Colorado and State Highway 52 road re-design in Boulder County, Colorado.

Seniors Housing

Design of senior housing projects include the Golden Pond Seniors Housing encompassing a campus of senior apartments, assisted living and Alzheimer's facilities in Golden, CO; Arvada Estates senior housing an 118 unit senior housing project in Arvada, CO; Broomfield Retirement an 118 unit senior housing project in Broomfield, CO and Orchard Gardens an 85 unit Alzheimer's facility in Arvada, CO.

Land Development

Mr. Moore has assisted many developers through the land development process as a consultant, owner and partner. Project experience includes preparation of feasibility studies, project proforma's, preparation of loan packages, negotiation of development agreements and construction administration. Notable projects include Ryan Ranch Subdivision in Jefferson County, Colorado; Candlelight Ridge in Erie, Colorado; Ridgeview Estates in Adams County, Colorado, and Legend Ridge in Niwot, Colorado.

Structural Engineering

Mr. Moore has performed structural design, inspections, retaining wall designs, and box culvert designs, on residential, commercial and public projects. Larger projects include the Ralston Creek Bridge, trail and equestrian underpass for the City of Arvada, CO; Platte Canyon Road box culvert replacement for the State of Colorado and the Sheridan Community College dormitory buildings in Sheridan, Wyoming.

Utility Projects and Pump Stations

Preparation of utility reports and design and construction of water and sewer transmission lines, holding ponds, buildings and pump station facilities for raw water, potable water and sewer for developers, utility districts and municipalities. Projects include the regional sewer pump station for the Clear View project in Johnstown, CO; the raw water reservoirs and pump station for the City of Arvada Church Ditch takeout project in Arvada, CO.

Power Projects

Mr. Moore was project civil/construction engineer on the 1.3 billion dollar Bath County Pumped Storage project for Virginia Electric and Power Company (VEPCO) and in Bath County, Virginia. This project involved two earthen dams of which one was the tallest earth fill dam in the world at that time, design and construction of the powerhouse, tunnels and related appurtenances. Mr. Moore was a civil/construction engineer on the Chevron Carter Creek Gas Project in Evanston, Wyoming. This project was a 500 million dollar gas purification facility that was designed and constructed to purify natural gas. On both projects Mr. Moore was in the field performing design, direction of field personnel, inspections, quality control, material and equipment procurement, and related civil engineering duties.

DAVID E. MOORE, P.E.

Civil Department Manager

Professional Affiliations

American Society of Civil Engineers

American Institute of Architects

Home Builders Association

Society of American Military Engineers

Publications

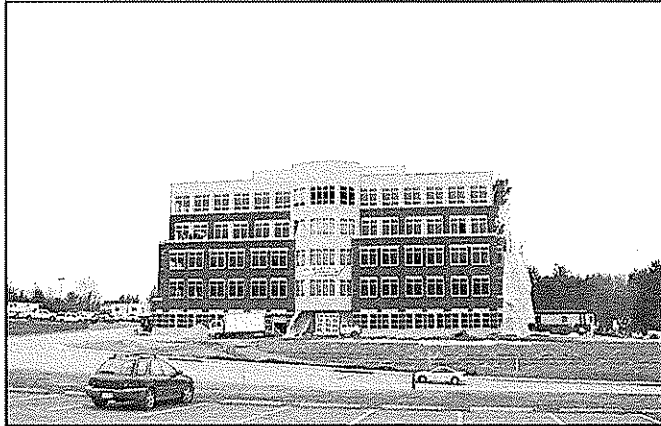
Published "Union and Non Union Construction in Colorado" in 1984 a Master's Thesis commissioned by the Associated General Contractor's of Colorado.

PROJECT EXPERIENCE PROFILE

Project:
Suncrest Executive Plaza

Owner:
Glenmark Holdings, LLC

Location:
Morgantown, West Virginia



PROJECT FEATURES

The Suncrest Executive Office Plaza is a five-story office complex located on the west side of Van Voorhis Road in the Suncrest area of Morgantown, West Virginia. CTL Engineering, Inc. provided the following services for this project: surveying, geotechnical, civil site design, storm water design and utility coordination.

Storm Water Management was attained by utilizing 1,600 feet of 48" diameter GCMP storage under the parking area adjacent to the building

CTL was responsible for the preparation of the sediment and erosion permits and submission of these permits to the West Virginia Department of Environmental Protection. CTL also prepared an entrance permit for the West Virginia Department of Highways for the turning lane at the site. Construction drawings were provided to the client (Glenmark Holdings) for the development of the site.

Client: Glenmark Holdings, LLC
Total Construction Cost: \$6,000,000
Project Completion: Phase I - Fall 2004



PROJECT EXPERIENCE PROFILE

Project:

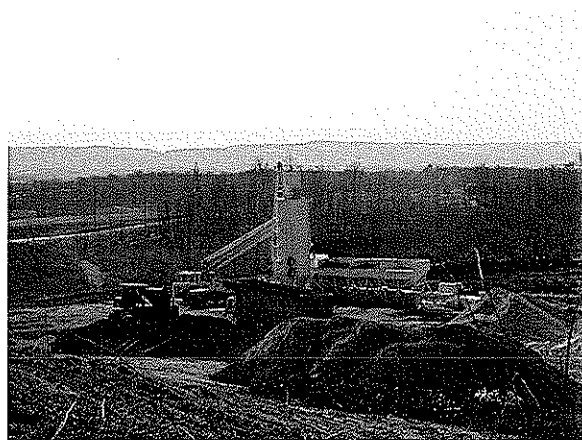
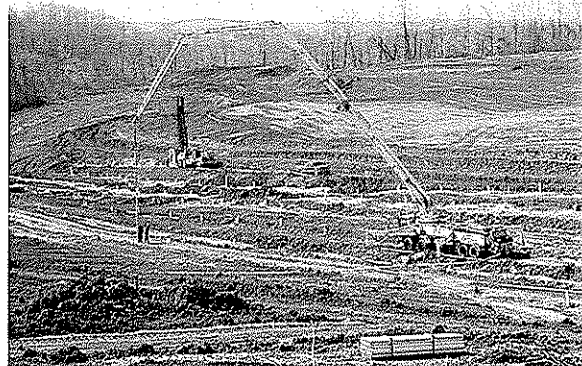
New University High School

Owner:

Monongalia County School District

Location:

Morgantown, West Virginia



PROJECT FEATURES

CTL Engineering of West Virginia, Inc. provided a preliminary geotechnical investigation to assess the feasibility of site selection. The study identified the presence of abandoned coal mines within the desired facility location. A foundation design and mine mitigation plan was developed to use grout injection technology and a deep foundation design.

This project involved 29,823 feet of drilling and the injection of 21,045 cubic yards of concrete to stabilize the 8 acre building zone. CTL is also providing construction supervision for the entire school site including earthwork, utilities, and structure.

Client Reference:

Mr. Frank Devano
Monongalia Co. BOE
(304)-291-9210

Project Completion:
Summer 2008



PROJECT EXPERIENCE PROFILE

Project:

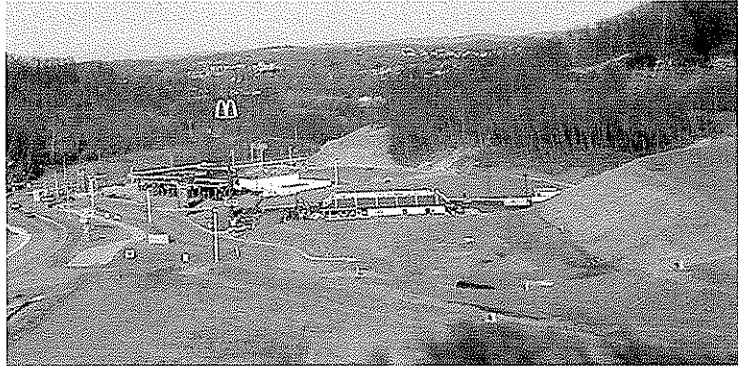
Star City Plaza

Owner:

BOJAN, L.L.C.

Location:

Morgantown, West Virginia



PROJECT FEATURES

This project for CTL Engineering of West Virginia, Inc. would be considered a “turn-key” effort. Services for this project involved most of the initial elements of development, such as the preliminary and final surveying and mapping for the area and coordination with local utility groups to provide the necessary services to the site. Other services provided included geotechnical investigations, civil site planning and design, coordination and planning with the WV Department of Transportation-Division of Highways for accesses to State Route 7 and U.S. Route 19, design of the sanitary collection system, sewage treatment plant facility, erosion and sediment control plans and the storm water management system. CTL also performed construction stake-out and observation services for the project during the construction phase of development.

Star City Plaza consists of several independent commercial establishments, namely Sheetz convenience store and McDonald’s restaurant, with plans of several hotel chain groups looking to occupy the other section of the site.



Client Reference:

BOJAN, LLC
Mr. John Lynch
(304)599-2244

Project Completion:
ONGOING

PROJECT EXPERIENCE PROFILE

Project:

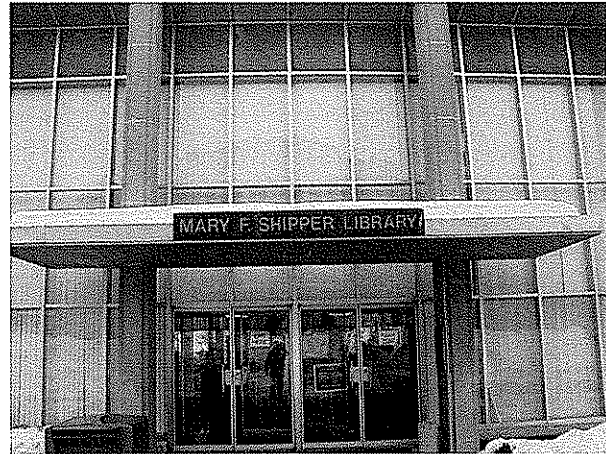
Mary F. Shipper Library Additions

Owner:

Potomac State College

Location:

Keyser, West Virginia



PROJECT FEATURES

CTL Engineering of WV, Inc. is teaming with Hayes Large Architects of Altoona, Pennsylvania to provide a variety of services associated with the proposed library expansion project for the existing Mary F. Shipper Library facility.

CTL Engineering will provide the following services: boundary survey, topographic mapping, infrastructure (utility) location and reconnaissance, subsurface investigations, and geotechnical evaluations. CTL will also be involved in environmental issues, including hazardous materials identification, development of a handling plan and oversight supervision of the program. Erosion and sediment control plans, storm water management plans and the accompanying permits are other items that CTL Engineering will address.

Client Reference:

Mr. Craig Meadows
Hayes Large Architects
(814)-946-0451

CTL Fees:

\$10,000.00

Project Completion:

2003



PROJECT EXPERIENCE PROFILE

Project:

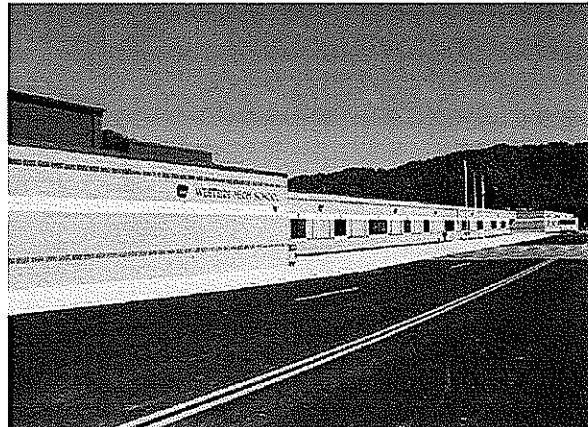
Westside High School

Owner:

Wyoming County Board of Education

Location:

Clear Fork, West Virginia



PROJECT FEATURES

Westside High School, located in Clear Fork, WV, was formed through the consolidation of Oceana and Baileysville High Schools. The school, dedicated in the Fall of 2002, houses grades 9 thru 12 with approximately 669 students attending.

CTL Engineering provided construction observation and testing services for the site development and construction phases of the project. CTL also assisted in providing geotechnical support relating to problematic soils discovered during the site development phase of construction. CTL made recommendations to remedy the situation by incorporating a special geo-textile material and construction technique to provide additional foundation support.

Due to poor soil conditions throughout the construction site, caissons and grade beams were incorporated into the footing and foundation plan to provide the necessary support for the main building structure. CTL provided observation and testing services for the installation of these caisson structures.



PROJECT EXPERIENCE PROFILE

Project:

Westwood Middle School

Owner:

Monongalia County Board of Education

Location:

Morgantown, WV



PROJECT FEATURES

Westwood Middle School, located in Morgantown, West Virginia, was formed through the consolidation of three local Junior High Schools (Cass, Waitman Barbe, and Westover). The school, dedicated in the fall of 1994, houses grades 6, 7, and 8 with approximately 500 students.

CTL Engineering provided a variety of services for the existing middle school building complex and an addition that was completed in 2001. CTL provided construction observation and testing services for the initial school building complex and was later employed to perform site topographic surveying for the new addition. CTL also provided drilling and geotechnical services for the new addition and coordinated with the architect of record for the project concerning footer and foundation recommendations.

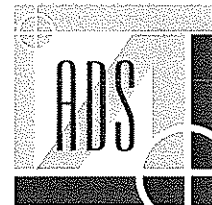


Allegheny Design Service





102 Leeway Street
Morgantown, WV 26505
Phone: (304)599-0771
Fax: (304)599-0772
www.alleghenydesign.com



**CONSULTING ENGINEERING FIRM SPECIALIZING
IN STRUCTURAL BUILDING DESIGN
AND BUILDING ANALYSIS**

Allegheny Design Services is a consulting engineering firm specializing in structural building design and building analysis.

Dedicated to serving West Virginia and the surrounding region, ADS recognizes the need for reliable and full service structural engineering support. ADS provides all phases necessary for the successful completion of a building project including schematic design studies, design development, construction documents and specifications, and construction administration.

Over 20 years In Design and Project Management of:

- Commercial
- Industrial
- Institutional
- Educational Facilities



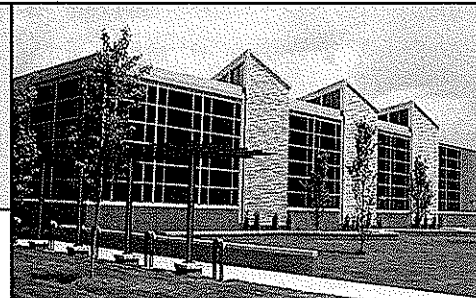
MIXED USE



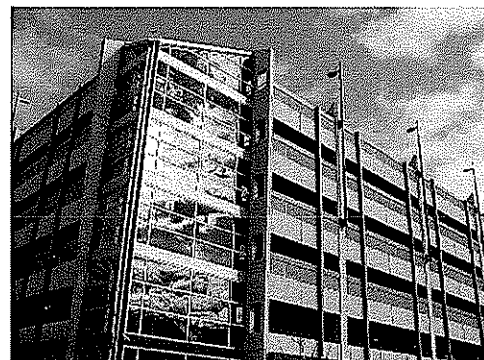
**HOTEL
CONFERENCE CENTERS**



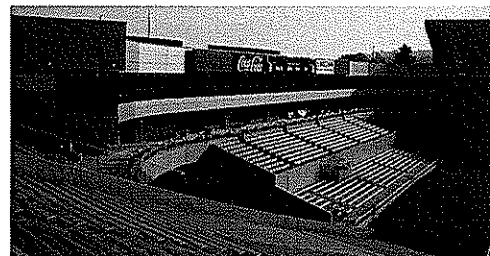
SECONDARY EDUCATION



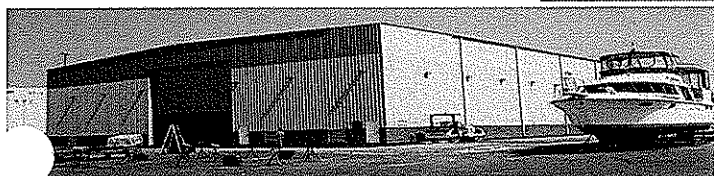
OFFICE BUILDINGS



PARKING GARAGES



ATHLETIC FACILITIES



METAL BUILDING SYSTEMS



HEALTH CARE



Allegheny Design Services

Structural Engineering

102 Leeway Street
Morgantown, WV 26505
Phone: (304)599-0771
Fax: (304)599-0772
E-mail: Dave@AlleghenyDesign.com
Web: www.AlleghenyDesign.com

FIRM PROFILE

Allegheny Design Services is a consulting engineering firm specializing in structural building design and building analysis.

Dedicated to serving West Virginia and the surrounding region, ADS recognizes the need for reliable and full service structural engineering support. ADS provides all phases necessary for the successful completion of a building project including schematic design studies, design development, construction documents and specifications, and construction administration. We currently hold licenses in West Virginia, Virginia, Maryland, Pennsylvania, and District of Columbia.

ADS's experience exceeds twenty-five years in the Design and Project Management of:

Commercial Facilities

Industrial Facilities

Institutional Facilities

Educational Facilities

ADS was established by David Simpson, P.E., MBA, in 2002 as a result of a need in North Central West Virginia for reliable structural engineering services. ADS utilizes a combination of office technology and a motivated staff to deliver projects typically up to \$25 million in construction value. We have completed design work for over \$150 million in construction since our inception. Our clients include architects, contractors, developers, attorneys, and insurance companies.

Building systems delivered by ADS include structural steel, reinforced concrete, precast concrete, and structural timber. ADS currently utilizes the latest engineering design and drafting software for the development of project work.

ADS is covered under a \$1 million liability policy for errors and omissions through Beazley Insurance Company.



Allegheny
Design Services
Structural Engineering

102 Leeway Street
Morgantown, WV 26505
Phone: (304)599-0771
Fax: (304)599-0772
E-mail: Dave@AlleghenyDesign.com
Web: www.AlleghenyDesign.com

KEY PERSONNEL

David R. Simpson, P.E., SECB, MBA, President

West Virginia Institute of Technology, BSCE

West Virginia University, MBA

Structural Engineering Certification Board

P.E. Licenses in the following States:

West Virginia

Pennsylvania

Maryland

Virginia

District of Columbia

National Council of Examiners for Engineering and Surveying

Michael L. Sipe, E.I., Engineering Intern

West Virginia Institute of Technology, BS Mechanical Engineering

West Virginia University

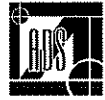
Structural Analysis

Steel Design

Reinforced Concrete Design

Jason D. Robinson, E.I., Engineering Intern

West Virginia University, BS Civil Engineering



Allegheny

Design Services

Structural Engineering

102 Leeway Street
Morgantown, WV 26505
Phone: (304)599-0771
Fax: (304)599-0772
E-Mail: Dave@AlleghenyDesign.com
Web: www.AlleghenyDesign.com

David R. Simpson, P.E., SECB, MBA

President

Education:

West Virginia Institute of Technology
B.S. Civil Engineering

West Virginia University
Masters Business Administration

West Virginia State College
Architectural Technology

Professional Registrations:

Year first registered: 1983
Structural Engineering Certification Board
West Virginia
Pennsylvania
Maryland
Virginia
District of Columbia
National Council of Examiners for Engineering and Surveying

Professional Memberships:

American Society of Civil Engineers
Structural Engineering Institute, Charter Member
American Concrete Institute
American Institute of Architects – West Virginia Chapter
American Institute of Steel Construction, Inc.
American Iron and Steel Institute Member

Continuing Education:

2005 AISC Specification for Structural Steel Buildings – September 27, 2006 – Pittsburgh, PA
ASCE Testifying Skills for Engineers – February 16, 2007 – Orlando, FL

Professional Experience:

Responsible for project management and design at Allegheny Design Services. Experience includes over 24 years in structural design and project management for industrial, commercial, institutional, and nuclear/chemical facilities utilizing steel, concrete, masonry, and wood. Past accomplishments include design and construction administration of health care facilities, hotels, schools, shopping centers, aircraft hangars, numerous retail facilities, and numerous forensic engineering assignments. Experience has been obtained from the following assignments:

Experience Record:

Allegheny Design Services, LLC, President,	May 2002 to Present
R.M. Gensert and Associates, Vice President,	August 1998 to May 2002
West Virginia University, Assoc. Director Construction	August 1988 to August 1998
Simpson Engineering, Owner	August 1988 to August 1998
CECO Buildings Division, Senior Structural Engineer	April 1985 to August 1988
Rockwell International, Facility Structural Engineer	March 1982 to April 1985
Bellard Ladner & Assoc., Staff Structural Engineer	Sept. 1981 to March 1982
PPG Industries, Facility Structural Engineer	January 1980 to Sept. 1981

Additional Professional Experience:

Experience encompasses design, project management, and construction administration for reinforced concrete, structural steel, precast concrete, masonry, and wood structures.

Project experience includes:

Fairmont Senior High School, Fairmont, WV
Belmont Community Center, St. Clairsville, OH
Monongalia General Hospital Operating Room Addition, Morgantown, WV
Chestnut Ridge Church, Morgantown, WV
West Virginia University Business and Economics Building, Morgantown, WV
West Virginia University High Density Book Storage Facility, Morgantown, WV
West Virginia University Life Sciences Building, Morgantown, WV
West Virginia University Student Recreation Center, Morgantown, WV
West Virginia University Wise Library Addition, Morgantown, WV
West Virginia University White Hall Computer Center, Morgantown, WV
UPMC Hillman Cancer Center, Pittsburgh, PA
Carnegie Museum of Natural History Addition, Pittsburgh, PA
Cultural Trust District Parking Garage, Pittsburgh, PA
Delaware Valley Veterans' Home, Philadelphia, PA
Fairmont State University Parking Garage, Fairmont, WV
First Avenue Parking Garage, Pittsburgh, PA
Hillman Cancer Center (UPMC), Pittsburgh, PA
New Enterprise Precast Corporate Headquarters, New Enterprise, PA
Respironics Corporate Office Facility, Pittsburgh, PA
International Brotherhood of Electrical Workers Headquarters Training Center, Pittsburgh, PA
Laurel Highlands Middle School Addition, Uniontown, PA
Trinity High School, Morgantown, WV
Mylan Pharmaceuticals Parking Garage, Morgantown, WV
Phipps Conservatory Addition, Pittsburgh, PA
Radisson Hotel and Conference Center, Morgantown, WV
Western Pennsylvania School for Blind Children, Pittsburgh, PA
In-Situ Vitrification Nuclear Waste Encapsulation Project, Richland, WA
Dominion Transmission Office Building, Clarksburg, WV
Multiple structural evaluations and expert witness for structural damage due to subsurface mining subsidence, floods, ice, wind, and construction errors
Over 400 low-rise metal building projects from Maine to South Carolina, including warehouses, aircraft hangar facilities, shopping centers, industrial facilities, and office facilities.



Allegheny

Design Services

Structural Engineering

102 Leeway Street
Morgantown, WV 26505
Phone: (304)599-0771
Fax: (304)599-0772
E-mail: Mike@AlleghenyDesign.com
Web: www.AlleghenyDesign.com

Michael L. Sipe, E.I.

Engineering Intern

Education:

West Virginia University Institute of Technology
B.S. Mechanical Engineering
Minor: Mathematics

Awards/Achievements/Organizations:

Deans List, last 4 completed semesters
Member of Pi Tau Sigma
Member of AISC
Associate Member of ASCE

Professional Registrations:

West Virginia, Engineering Intern License # 8519

Professional Experience:

Responsibilities include structural engineering design, construction documents, quality control, field engineering and project engineering.

Experience record:

Avery Court Apartments, Parkersburg, WV
Cutlip Christie Office Complex, Clarksburg, WV
Dominion Exploration Addition, Jane Lew, WV
Fairmont State University Smoke Vents, Fairmont, WV
Finite Element Analysis of Various Material Handling Structures
Gassaway Bank, Flatwoods, WV
Glenmark Office Building, Morgantown, WV
Greer Limestone Conveyor Structure Renovations, Morgantown, WV
Morgantown Event Center, Morgantown, WV
Pressley Ridge School Residence Hall & Dining Facilities, Clarksburg, WV
Proplex Athletic Training Facility, Morgantown, WV
Waterfront Marina, Morgantown, WV
West Milford Elementary School Classroom Addition, West Milford, WV
WVU Downtown Student Housing, Morgantown, WV
WVU Puskar Academic Center, Morgantown, WV

Courses and Continuing Education:

WVU Structural Analysis I, Spring 2006
WVU Steel Design, Fall 2006
WVU Reinforced Concrete Design, Spring 2007
AISC Design Steel Your Way with the 2005 AISC Specification, September 2006
ASCE Steel Framed Buildings, May 2007
AISC Façade Attachments to Steel Frames, September 2007
ASCE Reinforced Masonry: Design and Construction, November 2007



Allegheny

Design Services

Structural Engineering

102 Leeway Street
Morgantown, WV 26505
Phone: (304)599-0771
Fax: (304)599-0772
E-mail: Jason@AlleghenyDesign.com
Web: www.AlleghenyDesign.com

Jason D. Robinson, E.I.

Engineering Intern

Education:

West Virginia University
B.S. Civil Engineering

Awards/Achievements/Organizations:

Dean's List
Member of AISC
Associate Member of ASCE

Professional Registrations:

West Virginia, Engineering Intern License #8699

Professional Experience:

Responsibilities include structural engineering design, construction documents, quality control and field engineering.

Experience record:

Gabriel Brothers Renovation, Clarksburg, WV
Goshen Baptist Church, Morgantown, WV
Mylan Upper Warehouse to Labs, Morgantown, WV
The Dayton, Morgantown, WV
The View at the Park Phase 2, Morgantown, WV

Courses and Continuing Education:

WVU Steel Design – Fall 2007
AISC Façade Attachments to Steel Frames, September 2007
ASCE Reinforced Masonry: Design and Construction, November 2007



Allegheny
Design Services
Structural Engineering

PROJECT PROFILE

Cutlip Christie Office Complex Clarksburg, WV



PROJECT ARCHITECT:
STRUCTURAL ENGINEER:
CONTRACTOR:

WYK Architects, Clarksburg, WV
Allegheny Design Services, Morgantown, WV
March-Westin Company, Inc., Morgantown, WV

PROJECT SCOPE:

- 12,000 Sq. Ft. Corporate Office Building
- Structural Steel Framing System
- Shallow Foundation Systems

PROJECT VALUE: \$1.5 million

PROJECT COMPLETION: 2007



Allegheny
Design Services
Structural Engineering

PROJECT PROFILE

West Union Bank Clarksburg, WV



PROJECT ARCHITECT:	WYK Architects, Clarksburg, WV
STRUCTURAL ENGINEER:	Allegheny Design Services, Morgantown, WV
CONTRACTOR:	TMARO Corporation, Bridgeport, WV

PROJECT SCOPE:

- 9,000 Sq. Ft. New Bank Facility
- Structural Steel Framing
- Spread Footing Foundation System

PROJECT VALUE: \$1.5 million

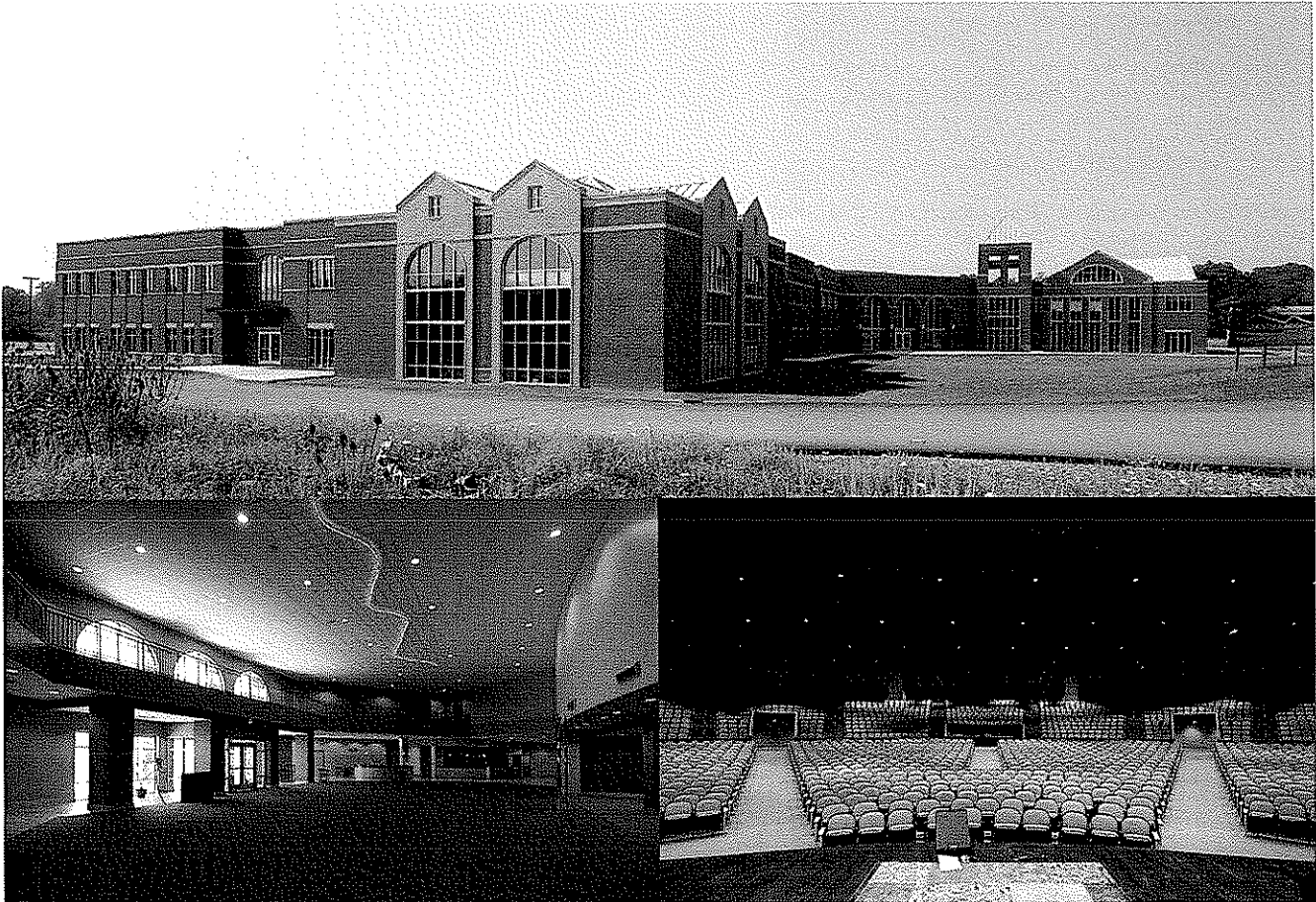
PROJECT COMPLETION: 2005



Allegheny
Design Services
Structural Engineering

PROJECT PROFILE

Chestnut Ridge Community Church Morgantown, WV



PROJECT ARCHITECT:
STRUCTURAL ENGINEER:
CONTRACTOR:

Paradigm Architecture, Morgantown, WV
Allegheny Design Services, Morgantown, WV
March-Westin Company, Inc., Morgantown, WV

PROJECT SCOPE:

- Education/Gymnasium Wing
- Administrative Office Wing
- 2000 Seat Sanctuary

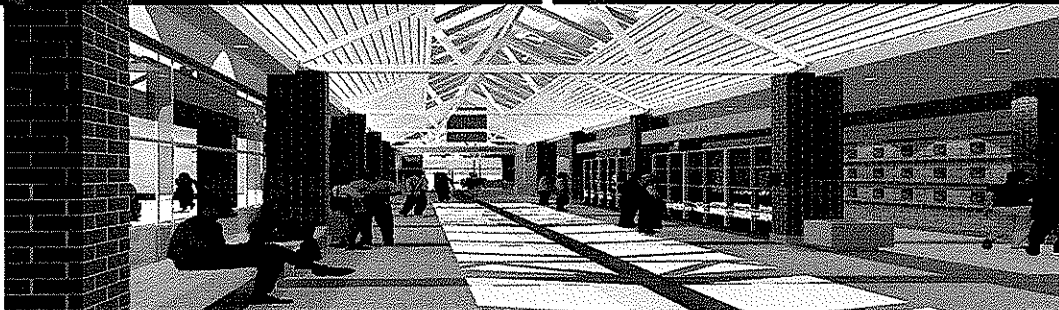
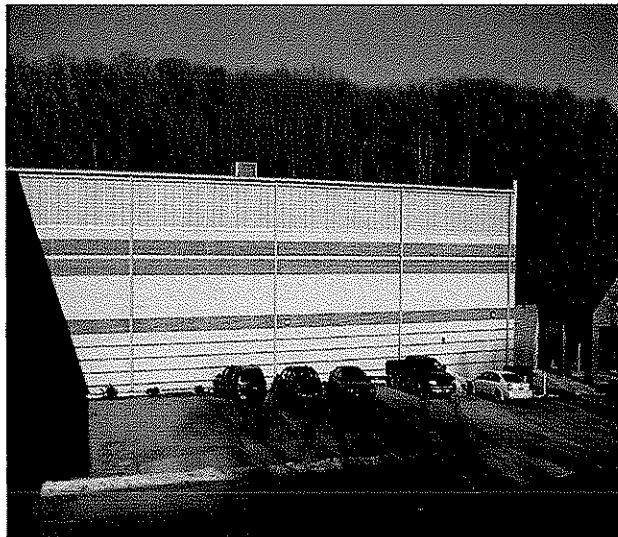
PROJECT VALUE: \$12 Million
PROJECT COMPLETION: 2006



Allegheny
Design Services
Structural Engineering

PROJECT PROFILE

Davis & Elkins College Athletic Center Elkins, WV



PROJECT ARCHITECT:
STRUCTURAL ENGINEER:
CONTRACTOR:

Paradigm Architecture, Morgantown, WV
Allegheny Design Services, Morgantown, WV
March-Westin Company, Inc., Morgantown, WV

PROJECT SCOPE:

- Gymnasium
- Offices
- Classrooms

PROJECT VALUE: \$6 Million

PROJECT COMPLETION: 2006



Allegheny
Design Services
Structural Engineering

PROJECT PROFILE

Delaware Valley Veteran's Home Philadelphia, PA



PROJECT ARCHITECT:

GBQC Architects, Philadelphia, PA

STRUCTURAL ENGINEER:

David Simpson of Allegheny Design Services, Morgantown, WV
in former employ of R. M. Gensert Associates, Pittsburgh, PA

PROJECT FEATURES:

- New State-of-the-Art 170 Bed Care Facility
- Personal and Alzheimer's Care
- Interior Skylit 'Main Street' Corridor
- Designed and bid in eight months

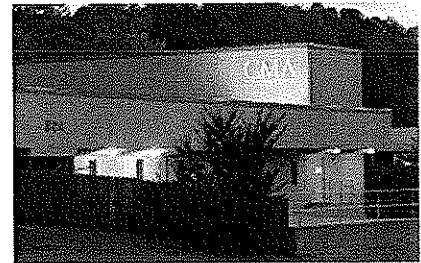
PROJECT VALUE: \$19 million

PROJECT COMPLETION: 2002

CMA

E N G I N E E R I N G

C O R P O R A T E P R O F I L E



Clingenpeel/McBrayer & Associates, Inc.

Services

Clingenpeel/McBrayer & Associates is a West Virginia based small business firm, providing services in the areas of HVAC, plumbing, fire protection and electrical engineering. CMA's founders have long believed in the philosophy that a successful project requires a comprehensive approach. This includes all traditional facets of project planning, starting with master planning, working closely with the client, developing the completed construction documents, bidding the project and contract administration. However, our depth of expertise goes far beyond the traditional services. From developing design criteria for owners to designing the mechanical and electrical systems for the West Virginia DEP Consolidated Office Building, the first LEED certified building in the state, CMA is a proven leader in providing engineering services in the design-build delivery method.

History

Since 1986, Clingenpeel/McBrayer & Associates has provided services on numerous projects of varying size and complexity. Clients include architects, industrial companies, governmental agencies, contractors, engineers, developers and private organizations. Project locations include West Virginia, Virginia, Ohio, Kentucky, Maryland, Pennsylvania, California and Connecticut.

Commitment

Clingenpeel/McBrayer & Associates' submittal is based on your needs and our experience. Our firm has the experience, service and quality work to create a successful project. We are committing senior design professionals in order to assure you receive top priority. We have extensive experience with projects of this nature. Examples of projects for which we were the Engineer are listed in this proposal.

From an initial staff of five employees in 1986, the company has grown and now has two offices with a staff of twelve which includes two professional engineers and one engineer-in-training. Facilities and equipment have grown to support CMA's staff and client's needs.

In 1987, computer aided drafting stations were added to provide the best quality and engineering services for our clients. We are currently operating AutoCad 2008. Our firm is constantly monitoring the latest technology, the cost effects and the end results to the final project.

Present staffing allows CMA to complete work in a timely manner without limiting our ability to perform our ongoing work. The staff of CMA is large enough to handle any size project, yet small enough for direct input and supervision by key personnel.

EXPERIENCE

Previous Five Years	
Projects:	492
Construction Costs	
MEP Costs:	\$156,039,689.
Total Costs:	\$472,847,542.



Clingenpeel/McBrayer & Associates, Inc.

824 Cross Lanes Drive
Charleston, WV 25313
(304) 343-0316 tel
(304) 343-5146 fax

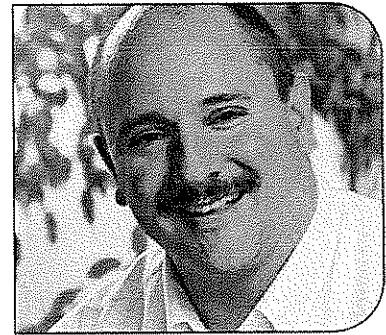
5 Riddle Court
Morgantown, WV 26505
(304) 598-2558 tel
(304) 598-2472 fax

www.cma.wv.com

P R O F I L E

**Timothy Cox, P.E.,
NCEES.
President
Mechanical Engineer**

(304) 598-2558
tc Cox@cma wv.com



EDUCATION

University of Colorado
Boulder, Colorado
Degree: Mechanical Engineering B.S.

REGISTRATIONS/PROFESSIONAL AFFILIATIONS

Association of Energy Engineers-CBCP
Registered Professional Engineer in WV, VA, KY
CPD (Certified in Plumbing Engineering)
Member of ASHRAE
American Society of Plumbing Engineers
National Association of Fire Protection Engineers
WV Society of Healthcare Engineers

EXPERIENCE

Mr. Timothy Cox, President and Senior Mechanical Engineer of CMA Engineering brings 24 years of mechanical design experience to our clients. Mr. Cox has been project manager and project engineer

PROJECTS

West Virginia University-

Open End Contract since 1999
Mountain Lair Plaza Renovations
Boreman HVAC/Plumbing/Fire Sprinkler Upgrades
Soccer Stadium
Coliseum Life/Safety Renovations
Coliseum Locker Room Suites
Engineering Science Building Addition/ Renovations
Arnold Hall Fire Alarm/ Fire Sprinkler Upgrades
Wrestling Training Facility

West Virginia University Hospitals

WV Eye Institute-MEP systems design for new facility
Cheat Clinic-MEP design for new clinical addition
WVUH Emergency Department-HVAC, electrical, fire and communication systems design for new addition
Chestnut Ridge Hospital-various MEP renovations
Healthworks Rehab and Fitness -MEP systems design for new facility

Mylan Pharmaceuticals, Morgantown, WV

Various projects including HVAC, plumbing, fire Sprinkler and controls for new office building, fluid bed addition, north plant expansion, parking garage and weighing and packaging.



Clingenpeel/McBrayer & Associates, Inc.

824 Cross Lanes Drive
Charleston, WV 25313
(304) 343-0316 tel
(304) 343-5146 fax

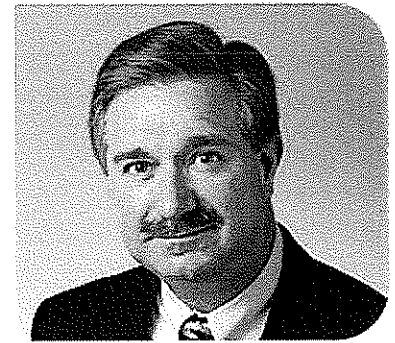
5 Riddle Court
Morgantown, WV 26505
(304) 598-2558 tel
(304) 598-2472

www.cma wv.com

P R O F I L E

Daniel Lee Ellars, P.E. LEED AP

Principal
(304) 343-0316
dellars@cmawv.com



EDUCATION

West Virginia University Institute of Technology
Montgomery, West Virginia.
Bachelors of Science in Electrical Engineering

West Virginia State University
Institute, West Virginia
Bachelors of Science in Business Administration

REGISTRATIONS/PROFESSIONAL AFFILIATIONS

Registered Professional Engineer in West Virginia

National Fire Protection Association (NFPA)

Institute of Electrical and Electronics Engineers
(IEEE)

American Society of Heating, Refrigerating and
Air-Conditioning Engineers (ASHRAE)

EXPERIENCE

Mr. Daniel L. Ellars, Electrical Engineer for Clingenpeel/McBrayer & Associates, Inc. brings 19 years of electrical design experience to our clients. Mr. Ellars has been a project manager and project engineer for a variety of projects including commercial and industrial facilities as well as for both power and tele-communications utilities.

PROJECTS

Educational Experience

Jackson County (WV) Schools—Electrical
Upgrades &
Expansions.

Hospital Experience

West Virginia University / Ruby Memorial Hospitals
West Virginia Eye Institute—Electrical systems
design for new facility.
Thomas Memorial Hospital—Electrical systems
survey, upgrades and documentation. Standby
emergency power engine/generator replacement.

Military Experience

West Virginia Army National Guard
Eleanor (WV) Maintenance Center—Electrical
systems design for new facility.

Correctional Experience

St. Mary's Correctional Center—Multiple
emergency power engine/generator systems with
combined control and monitoring.

Industrial Experience

Mylan Pharmaceuticals
Mylan Office & Lab Buildings—various electrical
systems designs for new, existing and expanded
facilities including new 23kV/12kV switchyard
and grounding plain layout.



Clingenpeel/McBrayer & Associates, Inc.

824 Cross Lanes Drive
Charleston, WV 25313
(304) 343-0316 tel
(304) 343-5146 fax

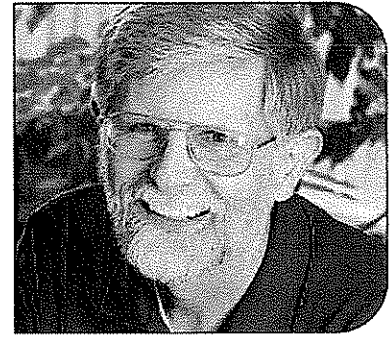
5 Riddle Court
Morgantown, WV 26505
(304) 598-2558 tel
(304) 598-2472

www.cmawv.com

P R O F I L E

James A. Kerns Mechanical/Electrical Designer

(304) 343-0316
jkerns@cmawv.com



EDUCATION

West Virginia State College
Institute, West Virginia
Degree: Bachelor of Science in Industrial
Technology/Building Construction

REGISTRATIONS/PROFESSIONAL AFFILIATIONS

Member of ASHRAE

EXPERIENCE

Mr. James A. Kerns has over 32 years experience in Mechanical and Electrical engineering design. He has been responsible for design projects in the educational, commercial, and health care fields.

Mr. Kerns has been a great asset to Clingenpeel/McBrayer & Associates. His knowledge and experience enables him to complete project designs in a clear and concise manner and in a timely fashion.

PROJECTS

Kanawha County Schools

George Washington High School-HVAC Renovations
George Washington High School-Classroom Additions
Horace Mann Middle School-HVAC Renovations
Elkview Middle School-Classroom Additions
Elkview Middle School-Fire Alarm System
Ruffner Elementary School-Classroom Additions
Point Harmony Elementary School-Activity Building

Concord College

Athens, West Virginia — various renovation projects throughout the campus, which include Twin Towers Fire Alarm, Twin Towers Elevator Renovation, and Alexander Arts Center Chiller Replacement.

U.S. Postal Service

Open End Contract Since 1993, which encompasses numerous Post Office Renovations, new Post Offices, and new Postal Maintenance Facilities. Mr. Kerns has been Project Manager for over 65 projects for the U.S. Postal Service.

Yeager Airport

New Parking Garage
New Emergency Generator
Electrical Upgrades
Fire Alarm System Upgrade
Security Upgrade
Fire Sprinkler Renovations

CMA
ENGINEERING

Clingenpeel/McBrayer & Associates, Inc.

824 Cross Lanes Drive
Charleston, WV 25313
(304) 343-0316 tel
(304) 343-5146 fax

5 Riddle Court
Morgantown, WV 26505
(304) 598-2558 tel
(304) 598-2472

www.cmawv.com

P R O F I L E

Larry Weese Mechanical/Plumbing Designer

(304) 343-0316
lweese@cmauw.com



EDUCATION

West Virginia University
Morgantown, West Virginia
Degree: Division of Forestry BS,MS

PROJECTS

Emergency Response Facilities

Raleigh County 911-New Facility
Mason County 911-New Facility
Randolph County 911-New Facility
Orchard Manor Fire Station-New Facility

Primary/Secondary Educational Experience

South Charleston Middle School Toilet Renovations
Shady Springs High School Classroom Additions
Clear Fork Elementary School HVAC Renovations
New Sissonville Middle School
Nitro High School Toilet Renovations
Fairdale Elementary School

Higher Educational Experience

Marshall University-Band Practice Facility
Marshall University-Morrow Library Renovations
Fairmont State University-New Student Union
WVU Institute of Technology-
Old Main Fire Sprinkler
Engineering Building Fire Alarm/Sprinkler

PROFESSIONAL DEVELOPMENT

Various seminars and technical sessions

EXPERIENCE

Mr. Larry Weese, Mechanical Designer for Clingenpeel/McBrayer & Associates, Inc. brings 18 years of mechanical design and project management experience to our clients.

Commercial Experience

Verizon-Various projects including 1500 MacCorkle
Office Building Renovations
Public Service Commission- New Parking Garage
and Office Renovations
New Medical Office Building-Clarksburg, WV
Silver Tree Suites-New Hotel in Deep Creel, MD



Clingenpeel/McBrayer & Associates, Inc.

824 Cross Lanes Drive
Charleston, WV 25313
(304) 343-0316 tel
(304) 343-5146 fax

5 Riddle Court
Morgantown, WV 26505
(304) 598-2558 tel
(304) 598-2472

www.cmauw.com

Project Profiles

New Construction Design/Build

Design of mechanical, electrical, plumbing, fire protection and communication systems.

WV Department of Environmental Protection

CMA Engineering provided mechanical, electrical, plumbing and fire protection design services for new consolidated DEP office in Charleston, WV. Building is a three-story facility of approximately 180,000sf with a 650 car parking area. **This facility is registered as a LEEDS construction project.**



Residence Halls-University of Charleston

CMA Engineering provided mechanical, electrical, plumbing and fire protection design services for the design/build of two new four-story Dormitories, constructed during the summers of 2004 and 2005. In 2006, CMA provided design for the addition of a wing to the second dormitory.



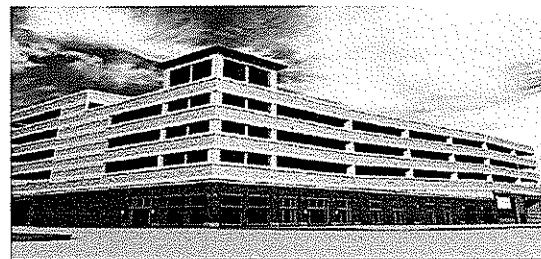
Parking Facility at Marshall University

CMA Engineering provided mechanical, electrical and plumbing design services for new 6 level parking garage facility on the Huntington campus. Garage includes 1009 parking spaces, glass elevators and pedestrian walkway above 3rd Avenue that connects the garage to Cam Henderson Center.



Parkersburg Transit Authority

CMA Engineering provided mechanical, electrical and plumbing design services for developing the design criteria for the new 5 floor Transit Authority Facility which includes 378 space parking garage, office areas, transit station, and passenger waiting area.



Bed Suite Housing-Fairmont State University

CMA Engineering provided mechanical, electrical, plumbing and fire sprinkler design services for developing the design criteria for the new 400 bed suite style residential housing.



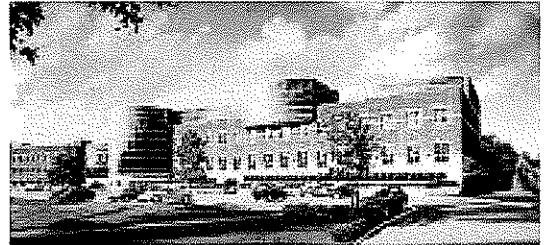
Project Profiles

New Construction

Design of mechanical, electrical, plumbing, fire protection and communication systems

Mylan Pharmaceuticals

CMA Engineering provided mechanical, electrical, plumbing and fire protection systems design for new corporate office in Morgantown, WV. CMA Engineering also provided engineering services for the 425,000sf addition to the plant facility.



Go-Mart Office Building

CMA provided mechanical, electrical and plumbing design services for the new 13,000sf corporate office building in Gassaway, WV.



Tamarack Caperton Conference Center

CMA Engineering provided mechanical, electrical, plumbing, fire protection and communication systems design for the 22,450sf addition to the Caperton Center. CMA provided engineering services for the original construction of the Tamarack facility.



New Randolph County 911 Center

CMA provided design services for the HVAC, plumbing, fire alarm, fire sprinkler, electrical and communications systems for the new 12,000sf facility.



New Putnam County 911 Center

CMA is currently providing design services for the HVAC, plumbing, fire alarm, fire sprinkler, electrical and communications systems for the new single story 911 Facility(11,700sf) and new two story maintenance garage(5,000sf) with six maintenance bays on lower level and storage area (1,500sf) on second level.

No Picture Available

Out for Bidding

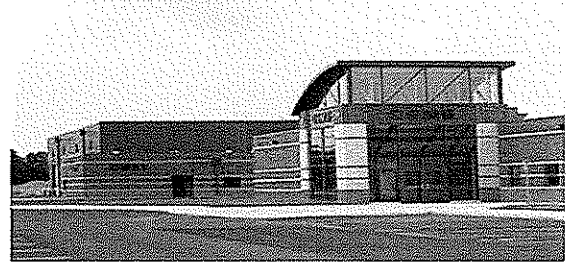
Project Profiles

New Construction

Design of mechanical, electrical, plumbing, fire protection and communication systems

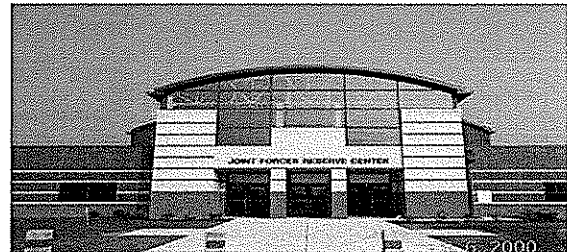
WVANG Eleanor Maintenance Center

CMA Engineering provided mechanical, electrical and plumbing, design services for a 132,000sf maintenance facility to house combined support maintenance shop and Class IX USPFO warehouse. CMA has continued to provide engineering services for the addition of the paint booth, entrance guard house, MCOFT pad, and covered storage.



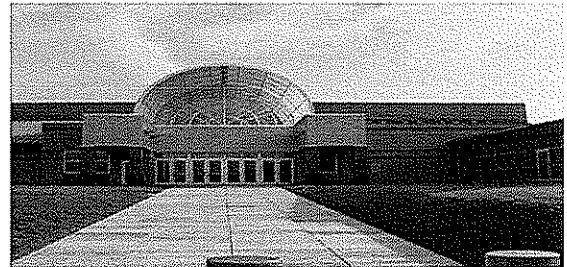
WVANG Eleanor Readiness Center

CMA Engineering provided engineering services for the design of mechanical, electrical and plumbing systems for the new 80,000sf readiness center, including a 16,000sf section that is utilized by the United States Navy.



WVANG Summersville Readiness Center

CMA Engineering provided engineering services for the design of mechanical, electrical and plumbing systems for the 42,000sf readiness center. This facility also features areas for use by the City of Summersville for events throughout the year.



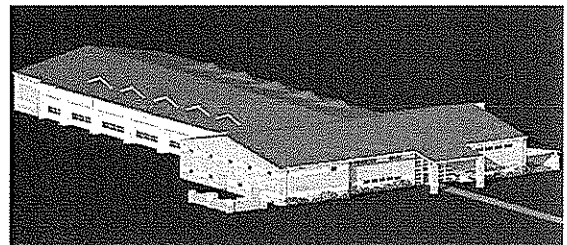
WVANG Lewisburg Readiness Center

CMA Engineering provided mechanical, electrical and plumbing design services for a 37,000sf readiness center that includes a vehicle maintenance bay.



WVANG-Fire Station

CMA Engineering is currently providing design services for the HVAC, plumbing, fire alarm, fire sprinkler, communications systems, lighting and electrical power for the design/build of the new approximately 21,000sf fire/crash/ rescue station in Charleston, WV.



CMA
ENGINEERING

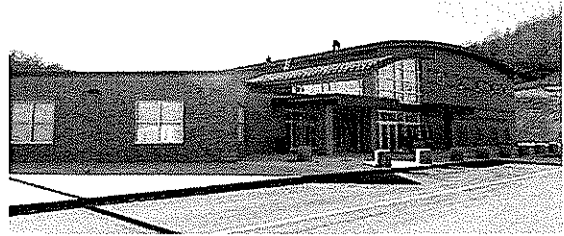
Project Profiles

New Construction

Design of mechanical, electrical, plumbing, fire protection and communication systems.

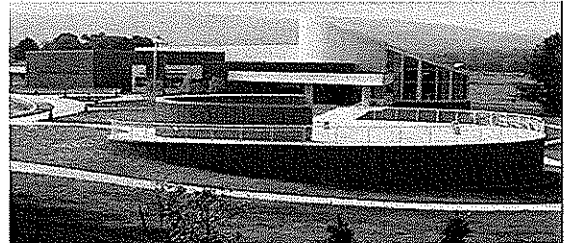
Sissonville Middle School, Kanawha County

CMA Engineering is currently providing mechanical, electrical, plumbing, sprinkler, and data/communication/ alarm/control engineering design for the new, approximately 80,000sf middle school.



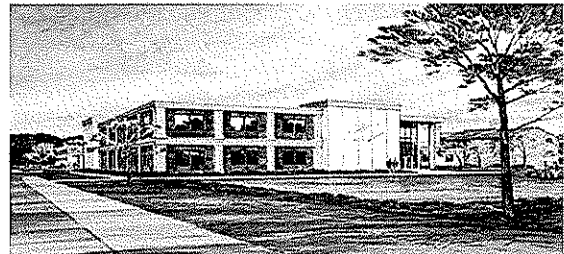
NRAO Greenbank Observatory Visitor's Center

CMA Engineering provided mechanical, electrical, plumbing, fire protection and communication systems design for new visitor's science center.



St. Albans Community Center

CMA Engineering provided design for HVAC, plumbing, fire sprinkler, fire alarm systems, communication systems, lighting and electrical power for new 26,900sf community center which included gymnasium, wrestling room, fitness room, locker rooms and an open area for aerobics, dance and gymnastics.



New Raleigh County 911 Center

CMA is currently providing design services for HVAC, plumbing, fire sprinkler/alarm systems, data and communication and electrical power for the new Emergency Operation Center in Raleigh County.



West Virginia University Eye Institute

CMA Engineering provided mechanical, electrical, plumbing, fire alarm, fire sprinkler and communication systems design for the new West Virginia University Eye Institute in Morgantown, WV.

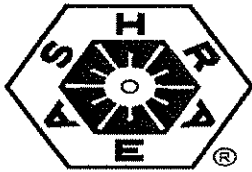




Building Officials Code
Administration
(BOCA)



AMERICAN CONSULTING
ENGINEERS COUNCIL
American Consulting
Engineers Council
(ACEC)



American Society of
Heating, Refrigerating and
Air Conditioning Engineers,
Inc.,
(ASHRAE)



National Fire
Protection Association
(NFPA)



MasterSpec
Specifications
(ARCOM)



WV Society of
Healthcare Engineers
(WVSHE)



Leadership in Energy &
Environmental Design
(LEED)



U.S. Green Building
Council
(USGBC)



American Institute of
Architects— WV Chapter
Affiliate Member
(WVAIA)



Contractors
Association of WV
(CA)

ASPE

American Society Of
Plumbing Engineers
(ASPE)



The
LIGHTING
AUTHORITY

Illuminating
Engineering Society
(IES)



Business Partner



Clingenpeel/McBrayer & Associates, Inc.

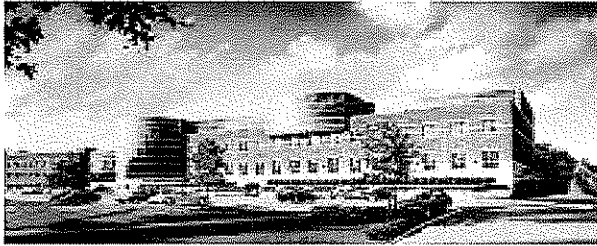
824 Cross Lanes Drive
Charleston, WV 25313
(304) 343-0316 tel
(304) 343-5146 fax

5 Riddle Court
Morgantown, WV 26505
(304) 598-2558 tel
(304) 598-2472

www.cmawv.com

References

Mechanical/Electrical/Plumbing



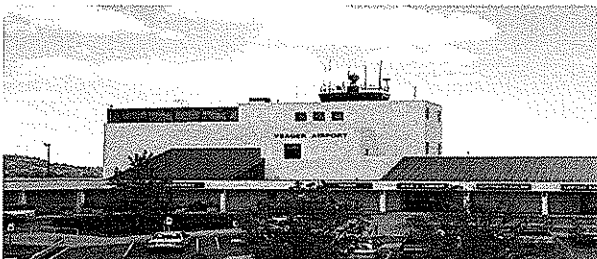
Mylan Pharmaceuticals, Inc.
P.O. Box 4310
Morgantown, WV 26504
Contact: Mr. J. J. Dotson
(304) 599-2595



WV Department of
Environmental Protection
601 57th Street
Charleston, WV 25304
Contact: Mr. B.F. (Cap) Smith
(304) 926-0480



West Virginia University
P.O. Box 0677
Morgantown, WV 25605
Contact: Mr. Russ Sharp
(304) 293-2101



Yeager Airport
100 Airport Road
Charleston, WV 25311
Contact: Mr. Rick Atkinson
(304) 344-8033



References

WYK Associates, Inc.



associates, inc
architecture
planning

References

WYK Associates, Inc.

Jim Christie, Mayor

City of Bridgeport
P.O. Box 1310
Bridgeport, WV 26330
(304) 842-8200, Ext. 115

Steve Johnson, Support Services Director

Davis Health Systems
P.O. Box 1484
Elkins, WV 26241
(304) 637-3129

Dr. Joseph Mace, Superintendent

Lewis County Schools
239 Court Street
Weston, WV 26452
(304) 269-8333

Neil Quinn, Clerk of the Works

Harrison County Schools
408 E. B. Saunders Way
Clarksburg, WV 26301
(304) 326-7305

Geary Weir, Director

Webster County Economic Development Authority
139 Baker Street
Webster Springs, WV 26288
(304) 847-2145



Lamb House Addition
Clarksburg, WV