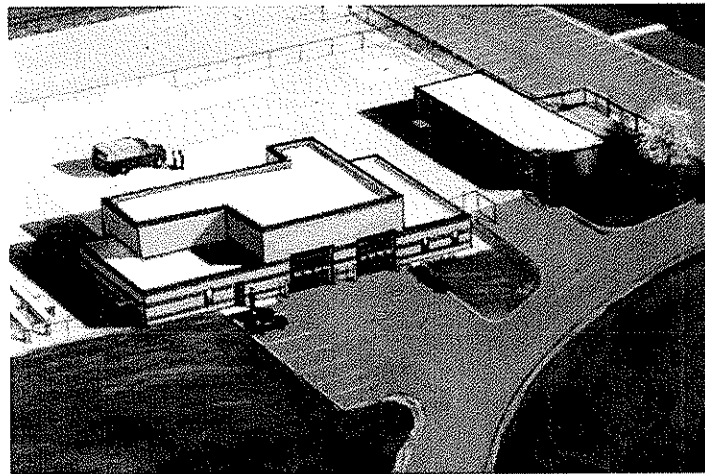
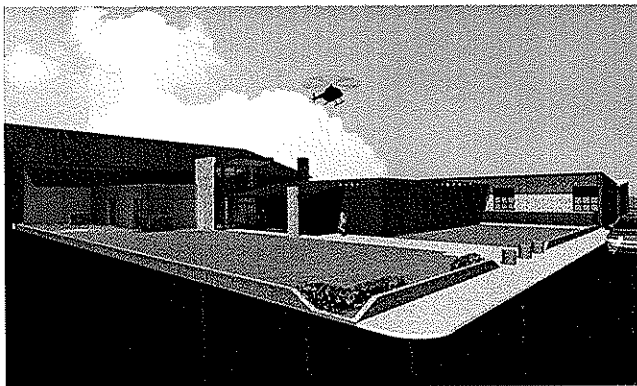


Proposal for Architectural & Engineering Services

TRI-STATE AFRC ADDITION & RENOVATION WV Army National Guard



TRI-STATE
Armory
OMS
Kenova, WV



RECEIVED

2009 MAR 17 A 8:17

PURCHASING DIVISION
STATE OF WV

Architecture
Engineering
Planning
Interiors
Visualizations



JERRY
GOFF
ARCHITECTURE



JERRY GOFF • AIA
ARCHITECTURE

March 16, 2009

WV Army National Guard
Construction and Facilities Management Office (CFMO)
1707 Coonskin Drive
Charleston, West Virginia 25311-1099

Re: "TRI-STATE AFRC ADDITION & RENOVATION"

The West Virginia Army National Guard is about to embark on an important project for the West Virginia National Guard. The project will be both challenging and demanding.

There are other qualified firms that will submit their credentials for this contract; however, should you choose Jerry Goff Architecture to implement the design of your project, you will receive the following distinct advantages:

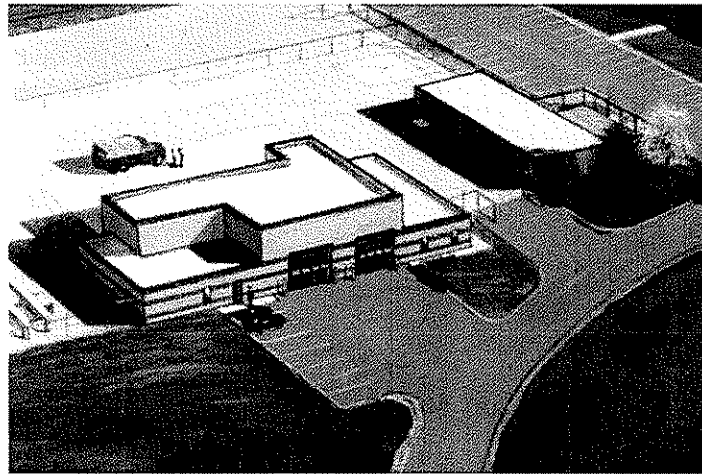
- You will have the *expertise of an architect who has successfully designed and administered complex PROJECTS for the West Virginia Army National Guard.*
- Your project will be much more than "just another project" as some firms may approach this project. *As a project of the WV Army National Guard, WE WILL MAKE THIS A PRIORITY PROJECT in our office.*
- You will benefit from our EXPERIENCE and KNOWLEDGE gained in the design of major projects for the WV Army National Guard.

We thank you for the opportunity to submit our expression of interest for the Tri-State AFRC Addition and Renovation Project and look forward to further discussions on this very important project. If you have any questions about our proposal, please call me at (304) 722-3379.

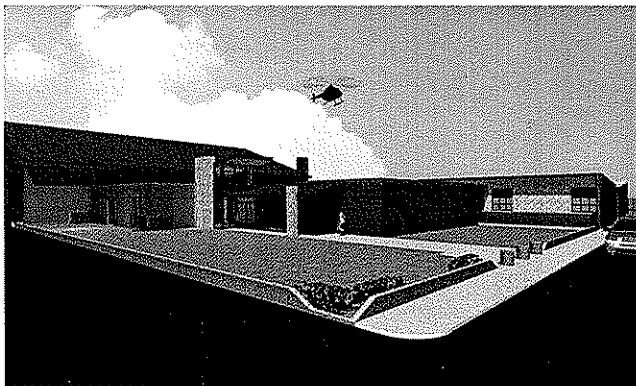
Jerry Goff, AIA

Proposal for Architectural & Engineering Services

TRI-STATE AFRC ADDITION & RENOVATION WV Army National Guard



TRI-STATE
Armory
OMS
Kenova, WV



Architecture
Engineering
Planning
Interiors
Visualizations



JERRY
GOFF
ARCHITECTURE

Table of Contents



Part 1 - Jerry Goff Architecture

Part 2 - The Project Team

Part 3 - Design Awards

Part 4 - References

Part 5 - Project Experience



JERRY GOFF AIA
ARCHITECTURE

The FIRM, Jerry Goff Architecture

Firm History

The firm of Jerry Goff Architecture is a third generation Architectural firm originally established in 1959 in St. Albans, West Virginia. The firm specializes in comprehensive design services for military, commercial, health care facilities, banks, assembly, educational facilities.

*Our staff is
enthusiastically
dedicated to
the success of
your project*

Since 1977, our firm has been working with owners to meet their current space requirements and plan for future growth of their facilities. The key to the success of any project is to have a planning team *experienced in creative design solutions in meeting the client's facility needs.*

Our team of specialists offers our clients the expertise to successfully complete increasingly complex projects.

In addition to offering our clients the highest quality design services, our firm offers other services that help our clients make important decisions through the enormous task of creating a properly designed modern facility.

Goals for Our Clients Projects

Our goal for our clients complex projects is to achieve innovative design solutions meeting today's requirements with consideration for future growth in a cost-effective manner.

Maximizing Input

Our firm prides itself on its ability to meaningfully involve all of the people that you feel are



JERRY GOFF AIA
ARCHITECTURE

We pride
ourselves in
being good
"listeners"

important to the success of your project in the planning and design process. In the development of each Jerry Goff Architecture project, our design team works closely with your planning staff, administrative, maintenance personnel, and project leader to design a facility, which *meets today's needs and anticipates the needs of tomorrow*. We have extensive experience in bringing groups to consensus and communicating complex architectural issues in understandable terms.

Proven Track Record

As you plan, design and construct your new project, you will need a team that has experience with these complex facilities and the many issues that you will need to address to ensure the success of your project.

We include an overview of our firm's design experience. The same professionals that made these projects successful will be working with you to ensure your new project meets all of your program requirements.

More building
for each
dollar spent
by our clients

Maximizing Value

We place great importance in obtaining the greatest value for our clients. We work to maximize each dollar spent to gain the most cost efficient building project.

User Friendly Buildings

Our firm has always been committed to designing facilities that are both attractive and cost effective. We are committed to designing facilities that are environmentally responsible and educating our clients about incorporating energy efficiency features in a cost-effective manner.



JERRY GOFF AIA
ARCHITECTURE

Jerry Goff Architecture is sensitive to managing **environmental** and **economic issues** surrounding the use of fossil fuels. We are enthusiastic about making energy conservation and efficient use of renewable energy a priority in all our projects.

Indoor Air Quality is an important issue concerning building design. At Jerry Goff Architecture, we screen the building materials we specify for known toxins to keep them out of the indoor air.

Manufacturing processes and disposal recommendations for building materials can impact the environment and the economy in unintended and unanticipated ways. We will consider the entire **lifecycle** of the materials we specify in each project and we will work with you to gain a more complete understanding of the **true costs and benefits** of design and material decisions.

Green Design and **Clean water resources** are vital to maintaining healthy communities. To ensure that this resource is protected, Jerry Goff Architecture will work with you to develop appropriate water management strategies. By maximizing your contribution to protecting our water resources, we all make our communities a better place to live.



JERRY GOFF AIA
ARCHITECTURE

The Project Architect



Jerry Goff, AIA,
NCARB
Principal
Owner

Registrations:
WV #1167
OH #13663
VA #011645

Affiliations:
• West Virginia
Society of
Architects

• American
Institute of
Architects

• National Council
of Architectural
Registration Board:

Jerry Goff, with over 35 years experience in designing complex facilities, has a proven track record in integrating technology in new and renovation projects. Jerry has led teams in the development of projects like the Saint Albans CST, Gassaway Readiness Center, OMS Shops at Tri-State Armory and Camp Dawson. Other experience includes developing a major Operations Center for BB & T Banking in Charleston and major additions to Hurricane High School and GW Middle School. Jerry Goff prides himself in **obtaining a consensus and united effort** to set common goals among building committees.

Jerry Goff considers his greatest asset as an architect is "being a good listener" and determining the Owners requirements and then implementing a process that results in a successful building project. Jerry Goff has developed his expertise by dedicating his career to satisfying clients needs. Credentials include:

NCARB - National Council of Architectural
Registration Boards certified

Licensed Architect: West Virginia, Virginia and Ohio

Member of the American Institute of Architects

Served as Architectural Consultant to the West
Virginia State Library Commission

Past Director: West Virginia Society of Architects

Recipient of Design Awards for Library projects in
Dunbar, New Martinsville and Richwood



JERRY GOFF AIA
ARCHITECTURE

The Project Team

The professionals who lead our project team have dedicated their careers in preparing themselves for your project. We offer our clients the best in architectural and engineering design services. Our clients receive direct personal involvement of the principal architect and project team leader assuring a comprehensive project coordination effort between architectural and engineering disciplines.



John Jason Goff. Since 1992 Jason's experience includes a proven track record in coordination and integrating technology systems in modern designs for new and renovation projects. Jason has led teams that have developed large complex projects such as the Additions to George Washington Middle School and Hurricane Middle School. Jerry Goff Architecture has been a leading design firm of addition and renovation projects in West Virginia. Jason has developed his expertise by dedicating his career to complex building projects earning respect from the construction community. This confidence has attracted a strong following of local general trades, mechanical and electrical contractors resulting in very competitive bids for our clients.



Chris Legg. Chris Legg joined the firm of Jerry Goff Architecture in 1997 and plays an important role in coordination of as-built conditions of existing buildings as they relate to complex addition and renovation projects. In addition to his role of architectural construction document development, Chris's experience in engineering disciplines offers a unique ability to coordinate mechanical and electrical systems with site and general trades work, assuring complete and detailed bidding and construction documents, resulting in minimum, if any, change orders during construction.



JERRY GOFF AIA
ARCHITECTURE



Graham Shrewsbury P.E. has provided Civil and Structural Engineering services for Jerry Goff Architecture for major Additions to the Hurricane High School, George Washington Middle School and various WV ARNG projects including the St. Albans CST Addition. Graham brings a vast experience in building and industrial engineering projects.



JERRY GOFF AIA
ARCHITECTURE

Team Members

GEOTECHNICAL:

H.C. NUTTING
912 Morris Street
Charleston, WV.

SITE/CIVIL ENGINEERING

Qk4 ENGINEERS
Project Engineer: Steven M. Newton, P.E.
802 B Street
St. Albans, WV

STRUCTURAL:

HAM ENGINEERING
Project Engineer: Judd Ham, P.E.
411 1/2 D Street
South Charleston, WV

PLUMBING, MECHANICAL & ELECTRICAL:

CMA ENGINEERS
Project Engineer: Dan Ellars, P.E.
824 Cross Lanes Drive
Charleston, WV



JERRY GOFF AIA
ARCHITECTURE

C O R P O R A T E P R O F I L E



Clingenpeel/McBrayer & Associates, Inc.

Services

Clingenpeel/McBrayer & Associates is a West Virginia based small business firm, providing services in the areas of HVAC, plumbing, fire protection and electrical engineering. CMA's founders have long believed in the philosophy that a successful project requires a comprehensive approach. This includes all traditional facets of project planning, starting with master planning, working closely with the client, developing the completed construction documents, bidding the project and contract administration. However, our depth of expertise goes far beyond the traditional services. From developing design criteria for owners to designing the mechanical and electrical systems for the West Virginia DEP Consolidated Office Building, the first LEED certified building in the state, CMA is a proven leader in providing engineering services in the design-build delivery method.

History

Since 1986, Clingenpeel/McBrayer & Associates has provided services on numerous projects of varying size and complexity. Clients include architects, industrial companies, governmental agencies, contractors, engineers, developers and private organizations. Project locations include West Virginia, Virginia, Ohio, Kentucky, Maryland, Pennsylvania, California and Connecticut.

Commitment

Clingenpeel/McBrayer & Associates' submittal is based on your needs and our experience. Our firm has the experience, service and quality work to create a successful project. We are committing senior design professionals in order to assure you receive top priority. We have extensive experience with projects of this nature. Examples of projects for which we were the Engineer are listed in this proposal.



From an initial staff of five employees in 1986, the company has steadily grown and now has two offices with a staff of fourteen which includes two professional engineers and two engineers-in-training. Facilities and equipment have grown to support CMA's staff and client's needs.

In 1987, computer aided drafting stations were added to provide the best quality and engineering services for our clients. We are currently operating AutoCad 2009. Our firm is constantly monitoring the latest technology, the cost effects and the end results to the final project.

Present staffing allows CMA to complete work in a timely manner without limiting our ability to perform our ongoing work. The staff of CMA is large enough to handle any size project, yet small enough for direct input and supervision by key personnel.

EXPERIENCE

Previous Five Years

Projects: 492

Construction Costs

MEP Costs: \$156,039,689.

Total Costs: \$472,847,542.



Clingenpeel/McBrayer & Associates, Inc.

824 Cross Lanes Drive
Charleston, WV 25313
(304) 343-0316 tel
(304) 343-5146 fax

5 Riddle Court
Morgantown, WV 26505
(304) 598-2558 tel
(304) 598-2472 fax

www.cma.wv.com

P R O F I L E

Timothy Cox, P.E.,
NCEES.
President
Mechanical Engineer

(304) 598-2558
tc Cox@cma wv.com

EDUCATION

University of Colorado
Boulder, Colorado
Degree: Mechanical Engineering B.S.

REGISTRATIONS/PROFESSIONAL AFFILIATIONS

Association of Energy Engineers-CBCP

Registered Professional Engineer in WV, CO, TN, VA,
MD, KY

CPD (Certified in Plumbing Engineering)

Member of ASHRAE

American Society of Plumbing Engineers

National Association of Fire Protection Engineers

WV Society of Healthcare Engineers

EXPERIENCE

Mr. Timothy Cox, President and Senior Mechanical Engineer of CMA Engineering brings 24 years of mechanical design experience to our clients. Mr. Cox has been project manager and project engineer for a variety of

PROJECTS

West Virginia University-Open End Contract since 1999
Mountain Lair Plaza Renovations
Boreman HVAC/Plumbing/Fire Sprinkler Upgrades
Soccer Stadium
Coliseum Life/Safety Renovations
Coliseum Locker Room Suites
Engineering Science Building Addition/Renovations
Arnold Hall Fire Alarm/ Fire Sprinkler Upgrades
Wrestling Training Facility

WVU Health Sciences Center
Electrical and Mechanical Utility Extensions for
BioMedical Research Facility

West Virginia University Hospitals
WV Eye Institute-MEP systems design for new facility
Cheat Clinic-MEP design for new clinical addition
WVUH Emergency Department-HVAC, electrical, fire and communication systems design for new addition
Chestnut Ridge Hospital-various MEP renovations
Healthworks Rehab and Fitness -MEP systems design for new facility

Mylan Pharmaceuticals, Morgantown, WV
Various projects including HVAC, plumbing, fire Sprinkler and controls for new office building, fluid bed addition, north plant expansion, parking garage and weighing and packaging.



Clingenpeel/McBrayer & Associates, Inc.

824 Cross Lanes Drive
Charleston, West Virginia 25313

(304) 343-0316 tel
(304) 343-5146 fax

5 Riddle Court
Morgantown, West Virginia

(304) 598-2558 tel
(304) 598-2472

www.cma wv.com

P R O F I L E

Daniel Lee Ellars, P.E.

Principal
(304) 343-0316
dellars@cmawv.com

EDUCATION

West Virginia University Institute of Technology
Montgomery, West Virginia.
Bachelors of Science in Electrical Engineering

West Virginia State University
Institute, West Virginia
Bachelors of Science in Business Administration

REGISTRATIONS/PROFESSIONAL AFFILIATIONS

Registered Professional Engineer in West Virginia

National Fire Protection Association (NFPA)

Institute of Electrical and Electronics Engineers (IEEE)

American Society of Heating, Refrigerating and Air-
Conditioning Engineers (ASHRAE)

EXPERIENCE

Mr. Daniel L. Ellars, Electrical Engineer for Clingenpeel/McBrayer & Associates, Inc. brings 19 years of electrical design experience to our clients. Mr. Ellars has been a project manager and project engineer for a variety of projects including commercial and industrial facilities as well as for both power and tele-communications utilities.

PROJECTS

Educational Experience

Jackson County (WV) Schools—Electrical Upgrades & Expansions.

Hospital Experience

West Virginia University / Ruby Memorial Hospitals
West Virginia Eye Institute—Electrical systems design for new facility.

Thomas Memorial Hospital—Electrical systems survey, upgrades and documentation. Standby emergency power engine/generator replacement.

Military Experience

West Virginia Army National Guard
Eleanor (WV) Maintenance Center—Electrical systems design for new facility.

Correctional Experience

St. Mary's Correctional Center—Multiple emergency power engine/generator systems with combined control and monitoring.

Industrial Experience

Mylan Pharmaceuticals
Mylan Office & Lab Buildings—various electrical systems designs for new, existing and expanded facilities including new 23kV/12kV switchyard and grounding plain layout.



Clingenpeel/McBrayer & Associates, Inc.

824 Cross Lanes Drive
Charleston, West Virginia 25313

(304) 343-0316 tel
(304) 343-5146 fax

5 Riddle Court
Morgantown, West Virginia

(304) 598-2558 tel
(304) 598-2472

www.cmawv.com

P R O F I L E

James A. Kerns Mechanical/Electrical Designer

(304) 343-0316
jkerns@cmawv.com

EDUCATION

West Virginia State College
Institute, West Virginia
Degree: Bachelor of Science in Industrial Technology/
Building Construction

REGISTRATIONS/PROFESSIONAL AFFILIATIONS

Member of ASHRAE

EXPERIENCE

Mr. James A. Kerns has over 32 years experience in Mechanical and Electrical engineering design. He has been responsible for design projects in the educational, commercial, and health care fields.

Mr. Kerns has been a great asset to Clingenpeel/McBrayer & Associates. His knowledge and experience enables him to complete project designs in a clear and concise manner and in a timely fashion.

PROJECTS

Kanawha County Schools

George Washington High School-HVAC Renovations
George Washington High School-Classroom Additions
Horace Mann Middle School-HVAC Renovations
Elkview Middle School-Classroom Additions
Elkview Middle School-Fire Alarm System
Ruffner Elementary School-Classroom Additions
Point Harmony Elementary School-Activity Building

Concord College

Athens, West Virginia — various renovation projects throughout the campus, which include Twin Towers Fire Alarm, Twin Towers Elevator Renovation, and Alexander Arts Center Chiller Replacement.

U.S. Postal Service

Open End Contract Since 1993, which encompasses numerous Post Office Renovations, new Post Offices, and new Postal Maintenance Facilities. Mr. Kerns has been Project Manager for over 65 projects for the U.S. Postal Service.

Yeager Airport

New Parking Garage
New Emergency Generator
Electrical Upgrades
Fire Alarm System Upgrade
Security Upgrade
Fire Sprinkler Renovations



Clingenpeel/McBrayer & Associates, Inc.

824 Cross Lanes Drive
Charleston, West Virginia 25313

5 Riddle Court
Morgantown, West Virginia

(304) 343-0316 tel
(304) 343-5146 fax

(304) 598-2558 tel
(304) 598-2472

www.cmawv.com

P R O F I L E

Matt Corathers, E.I. Mechanical Designer

(304) 598-2558
mcorathers@cmawv.com

EDUCATION

West Virginia University
Bachelor of Science -Mechanical Engineering

PROJECTS

West Virginia University
Mechanical design for new two-story
child care facility

University High School, Morgantown, WV
Mechanical design for renovations/
upgrades to the HVAC systems

Randolph County Building
Mechanical design for completion of two
story addition and modifications of the
existing second floor to be used by the
Family Court

PROFESSIONAL DEVELOPMENT

Successfully passed Fundamentals of Engineering
Exam

Monongalia County Family Court
Mechanical design for renovations to
4,850sf in existing court facility

University of Maryland Field House
Mechanical design for the replacement
of two heat exchangers and a domestic
use-hot water generator

EXPERIENCE

Matt is a recent addition to CMA Engineering
having previously worked for Whitman, Requardt
and Associates in Baltimore, MD.

Vilotteville Elementary School, Maryland
Mechanical design for the addition of 24
new classrooms



Clingenpeel/McBrayer & Associates, Inc.

824 Cross Lanes Drive
Charleston, West Virginia 25313

(304) 343-0316 tel
(304) 343-5146 fax

5 Riddle Court
Morgantown, West Virginia

(304) 598-2558 tel
(304) 598-2472

w w w . c m a w v . c o m

P R O F I L E

Jeremy R. Perry, E.I.

Mechanical Designer

(304) 343-0316

jperry@cmawv.com

EDUCATION

San Jose University
San Jose, CA
Degree: Mechanical Engineering B.S.

PROFESSIONAL DEVELOPMENT

Successfully passed Fundamentals of Engineering Exam
WV Society of Healthcare Engineers

Various ASHRAE, HVAC and LEED design courses

EXPERIENCE

Jeremy is a recent addition to CMA Engineering having previously worked for MKK Consulting Engineers, Billings, Mt.

PROJECTS

Educational Experience

Bighorn County School District #1, Wyoming
Grey Bull Elementary-LEED Analysis
New Rocky Mountain Junior/Senior High
Cowley High School

Sheridan County School District #1, Wyoming
Big Horn High School Campus
Tongue River High School

Powell High School Kitchen Renovation
Shoshoni High School Gym Renovation

Hospitality Experience

Warren Miller Lodge, Big Sky, MT

Religious Facilities

King of Glory Church, Billings, MT

Commercial Experience

Sheridan Bank, Sheridan, WY
Bighorn County Historical Museum, Hardin, MT



Clingenpeel/McBrayer & Associates, Inc.

824 Cross Lanes Drive
Charleston, West Virginia 25313

(304) 343-0316 tel
(304) 343-5146 fax

5 Riddle Court
Morgantown, West Virginia

(304) 598-2558 tel
(304) 598-2472

www.cmawv.com

P R O F I L E

Samuel Aaron Ward Electrical Designer

(304) 343-0316
award@cmawv.com

EDUCATION

West Virginia University Institute of Technology,
Montgomery, West Virginia.
Bachelors of Science in Electrical Engineering

PROJECTS

Educational Experience

Clendenin Elementary School-Elevator/fire alarm
upgrades

Emergency Center Experience

Bridgeport Fire/Police Station-Lighting and
electrical design for new facility
Wetzel County 911 Center-Lighting and electrical
systems design for new facility

Military Experience

Elkins Armed Forces Readiness Center-Lighting and
electrical systems design for new facility
Gassaway Armory-Electrical design for addition and
renovation to existing facility

REGISTRATIONS/PROFESSIONAL AFFILIATIONS

Institute of Electrical Engineers (IEEE)

West Virginia Society of Healthcare Engineers

Waste Water Treatment Experience

Mingo County Racetrack-Lift Station, lagoon aerator,
and sprinkler electrical system design

Industrial Experience

Marathon Petroleum, LLC-Various industrial
automation projects using PLCs.

EXPERIENCE

Mr. Samuel Aaron Ward, Electrical Designer,
for CMA Engineering brings two years of
electrical design experience to our clients. Mr.
Ward has been a project engineer for a variety
of projects in the petroleum industry as well as
for power utilities.



Clingenpeel/McBrayer & Associates, Inc.

824 Cross Lanes Drive
Charleston, West Virginia 25313

(304) 343-0316 tel
(304) 343-5146 fax

5 Riddle Court
Morgantown, West Virginia

(304) 598-2558 tel
(304) 598-2472

www.cmawv.com

P R O F I L E

Larry Weese Mechanical/Plumbing Designer

(304) 343-0316
lweese@cmawv.com

EDUCATION

West Virginia University
Morgantown, West Virginia
Degree: Division of Forestry BS,MS

PROJECTS

Medical Facilities Experience

Charleston Area Medical Center

Women & Children's Hospital- Renovations to
Emergency Room

Hess Medical Office Building-New Facility

Pinewood Medical Office Building-Renovations

Southern West Virginia Hospice-New Facility

NorthGate Doctor's Office Building-New Facility

WV Department of Health and Human Resources

Office of Chief Medical Examiner, Charleston
New Facility Mingo County

Emergency Response Facilities

Randolph County 911-New Facility

Mason County 911-New Facility

Raleigh County 911-New Facility

Orchard Manor Fire Station-New Facility

Industrial Experience

Standard Laboratories-Laboratory Addition

Dow Process Control-New Facility

Diamond Electric-Expansion

Commercial Experience

Bobcat of Advantage Valley-New Facility

Allegheny Springs Restaurant

PROFESSIONAL DEVELOPMENT

Various seminars and technical sessions

EXPERIENCE

Mr. Larry Weese, Mechanical Designer for
Clingenpeel/McBrayer & Associates, Inc. brings
18 years of mechanical design and project
management experience to our clients.

CMA

ENGINEERING

Clingenpeel/McBrayer & Associates, Inc.

824 Cross Lanes Drive
Charleston, West Virginia 25313

(304) 343-0316 tel
(304) 343-5146 fax

5 Riddle Court
Morgantown, West Virginia

(304) 598-2558 tel
(304) 598-2472

www.cmawv.com

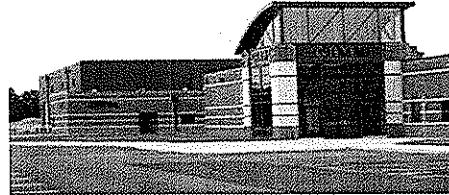
Project Profiles

New Construction

Design of mechanical, electrical, plumbing, fire protection and communication systems

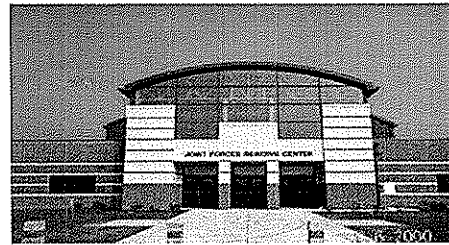
WVANG Eleanor Maintenance Center

CMA Engineering provided mechanical, electrical and plumbing, design services for a 132,000sf maintenance facility to house combined support maintenance shop and Class IX USPFO warehouse. CMA has continued to provide engineering services for the addition of the paint booth, entrance guard house, MCOFT pad, and covered storage.



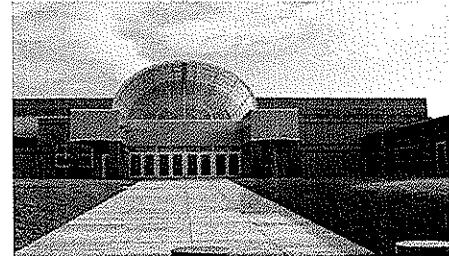
WVANG Eleanor Readiness Center

CMA Engineering provided engineering services for the design of mechanical, electrical and plumbing systems for the new 80,000sf readiness center, including a 16,000sf section that is utilized by the United States Navy.



WVANG Summersville Readiness Center

CMA Engineering provided engineering services for the design of mechanical, electrical and plumbing systems for the 42,000sf readiness center. This facility also features areas for use by the City of Summersville for events throughout the year.



WVANG Lewisburg Readiness Center

CMA Engineering provided mechanical, electrical and plumbing design services for a 37,000sf readiness center that includes a vehicle maintenance bay.



WVANG Elkins Readiness Center

CMA Engineering is currently providing design of HVAC, plumbing, fire sprinkler and fire alarm systems, and electrical systems for new 54,500sf readiness center.

No Photo Available

In Design Phase

CMA
ENGINEERING

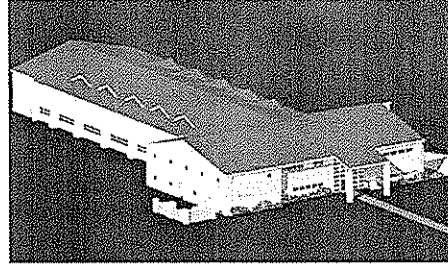
Project Profiles

New Construction

Design of mechanical, electrical, plumbing, fire protection and communication systems.

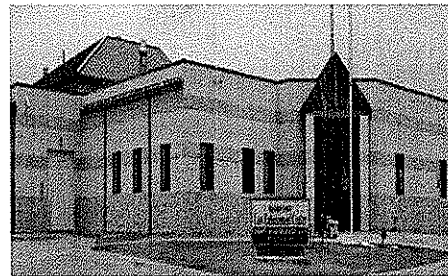
WVANG-Fire Station

CMA Engineering is currently providing design services for the HVAC, plumbing, fire alarm, fire sprinkler, communications systems, lighting and electrical power for the design/build of the new approximately 21,000sf fire/crash/ rescue station in Charleston, WV.



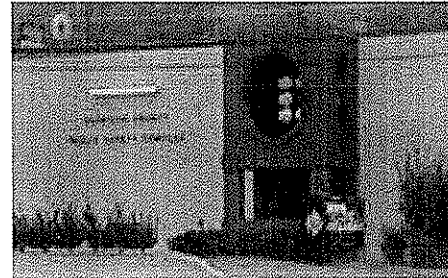
New Randolph County 911 Center

CMA has just completed design services for HVAC, plumbing, fire alarm, fire sprinkler, electrical and communications systems for the new 12,000sf facility.



Harrison County 911 Center

CMA Engineering provided mechanical, electrical, plumbing, fire alarm, fire sprinkler and communication systems design services.



New Raleigh County 911 Center

CMA is currently providing design services for HVAC, plumbing, fire sprinkler/alarm systems, data and communication and electrical power for the new Emergency Operation Center in Raleigh County.



CMA
ENGINEERING

Project Profiles

New Construction

Design of mechanical, electrical, plumbing, fire protection and communication systems.

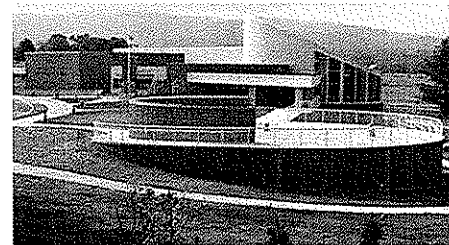
Mylan Pharmaceuticals

CMA Engineering provided mechanical, electrical, plumbing and fire protection systems design for new corporate office in Morgantown, WV. CMA Engineering is currently providing engineering services for the 425,000sf addition to the plant facility.



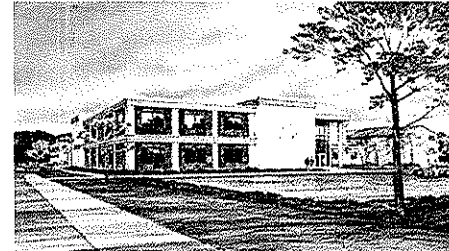
NRAO Greenbank Observatory Visitor's Center

CMA Engineering provided mechanical, electrical, plumbing, fire protection and communication systems design for new visitor's science center.



St. Albans Community Center

CMA Engineering provided design for HVAC, plumbing, fire sprinkler, fire alarm systems, communication systems, lighting and electrical power for new 26,900sf community center which included gymnasium, wrestling room, fitness room, locker rooms and an open area for aerobics, dance and gymnastics.



Go-Mart Office Building

CMA provided mechanical, electrical and plumbing design services for the new 13,000sf corporate office building in Gassaway, WV.



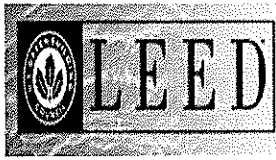
Residence Halls-University of Charleston

CMA Engineering provided mechanical, electrical, plumbing and fire protection design services for the design/build of two new four-story Dormitories, constructed during the summers of 2004 and 2005. In 2006, CMA provided design for the addition of a wing to the second dormitory. dormitory to be built during the summer break.



CMA
ENGINEERING

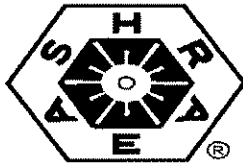
Professional Affiliations



Leadership in Energy &
Environmental Design
(LEED)



U.S. Green Building
Council
(USGBC)



American Society of
Heating, Refrigerating and
Air Conditioning Engineers,
Inc.,
(ASHRAE)



American Institute of
Architects— WV Chapter
Affiliate Member
(WVAIA)



National Fire
Protection Association
(NFPA)

ASPE

American Society Of
Plumbing Engineers
(ASPE)



MasterSpec
Specifications
(ARCOM)



The
LIGHTING
AUTHORITY

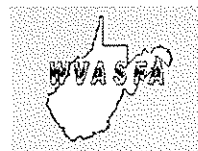
Illuminating
Engineering Society
(IES)



WV Society of
Healthcare Engineers
(WVSHE)



International Code Council (ICC)



Business Partner

CMA
ENGINEERING

DESIGN AWARD WINNING Projects by JERRY GOFF ARCHITECTURE



HONOR AWARD

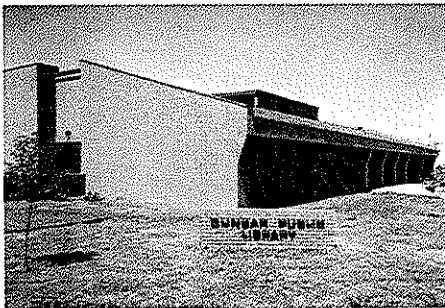
West Virginia Society of Architects

ADULT CONFERENCE CENTER
Diocese of Wheeling-Charleston
Huttonsville, West Virginia



HONOR AWARD

West Virginia Governor's Office
MAIN STREET PROGRAM
BEST NEW DEVELOPMENT
ONE VALLEY BANK - Morgantown, WV



SPECIAL RECOGNITION for LIBRARY PROJECTS

West Virginia Society of Architects

DUNBAR PUBLIC LIBRARY
NEW MARTINSVILLE PUBLIC LIBRARY
ROANE COUNTY LIBRARY



HONORABLE MENTION AWARD

West Virginia Society of Architects
MAIN STREET PEDESTRIAN PLAZA
St. Albans, West Virginia



JERRY GOFF AIA
ARCHITECTURE

References

Mr. Chuck Hatfield, Supt.
Putnam County Schools
Winfield, WV
304.586.0500

Mr. Perry Varnadoe
Meigs County Community Development
Pomroy, OH
740.992.3034

Mr. Doug Bentz, CEO
Roane General Hospital Rural Health Clinic
Spencer, WV
304.924.4444

Mr. Tom Brewer, Pres.
Peoples Federal Credit Union
Nitro, WV
304.722.2274

Ms. Dee Scritchfield, Director
Coplin Memorial Community Health Center
Elizabeth, WV
304.275.3301

Robert Gray, V.P.
Thomas Hospital
4605 MacCorkle Avenue SW
South Charleston, WV
304.766.3529



JERRY GOFF AIA
ARCHITECTURE

Design Experience

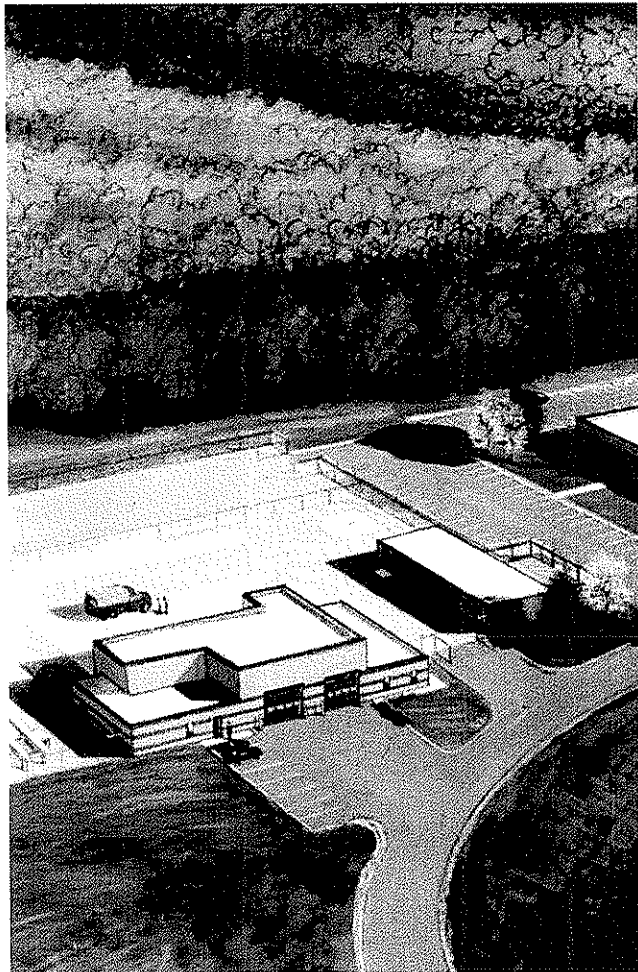
OMS

ORGANIZATIONAL MAINTENANCE SHOPS

Tri-State Airport
Huntington, WV

Camp Dawson
Kingwood, WV

Huntington Armory
Huntington, WV

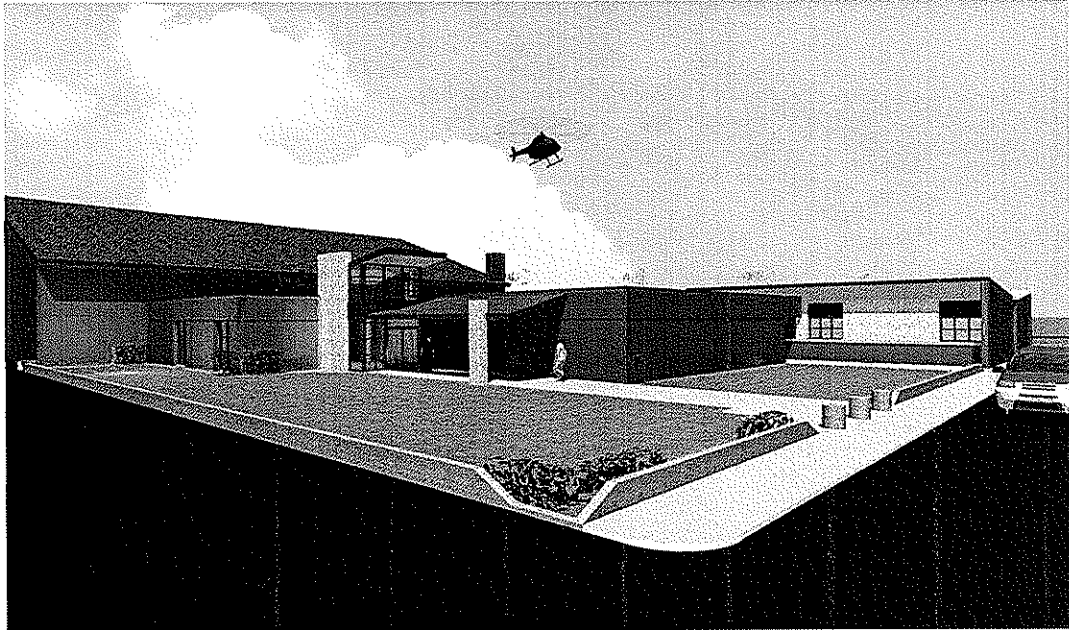


Architecture
Engineering
Planning
Interiors
Visualizations



JERRY
GOFF
ARCHITECTURE

Design Experience



Project Information:

New Area: 4,810 SF
Renovated: 24,170 SF

Offices
Locker & Showers
Unit Storage
Training
Kitchen
HVAC Replacement

GASSAWAY
READINESS CENTER
Gassaway, West Virginia
WV Army
National Guard

Architecture
Engineering
Planning
Interiors
Visualizations



**JERRY
GOFF**
ARCHITECTURE

Design Experience



Project Information:

Area: 14,000 sf
Command/Operations
Library & Training
COMSEC
Medical Group
Unit Storage
Locker & Shower Rooms
Vehicle Ready Bays



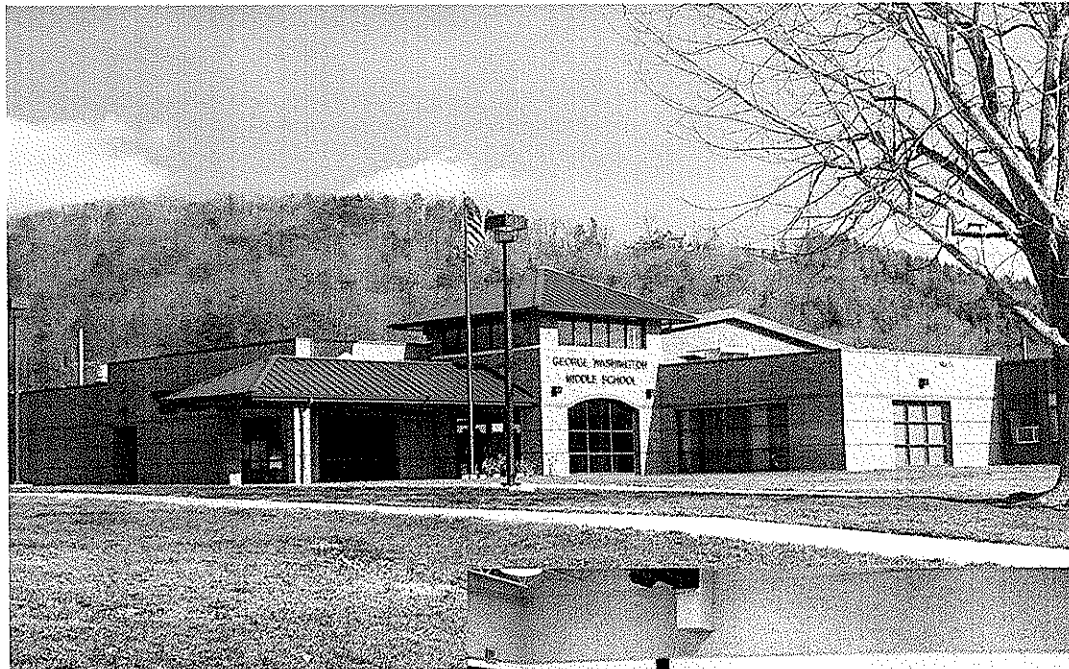
Civil Support Team
St. Albans
Readiness Center

Architecture
Engineering
Planning
Interiors
Visualizations



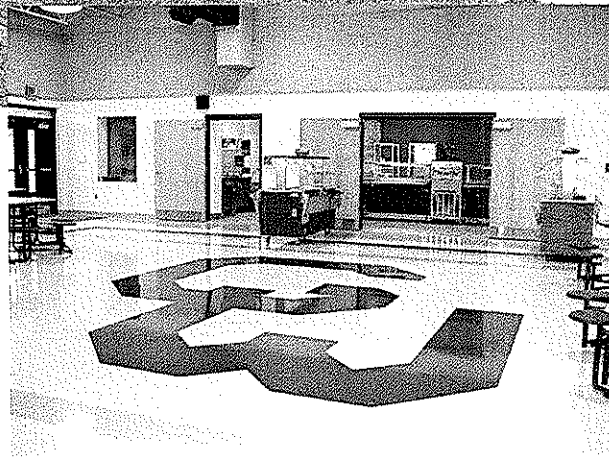
JERRY
GOFF
ARCHITECTURE

Design Experience



Project Information:

Area: 30,000 SF
Addition & Renovation
Classrooms
Technology Labs
Library/Media Center
Administrative Suite
Cafeteria & Kitchen



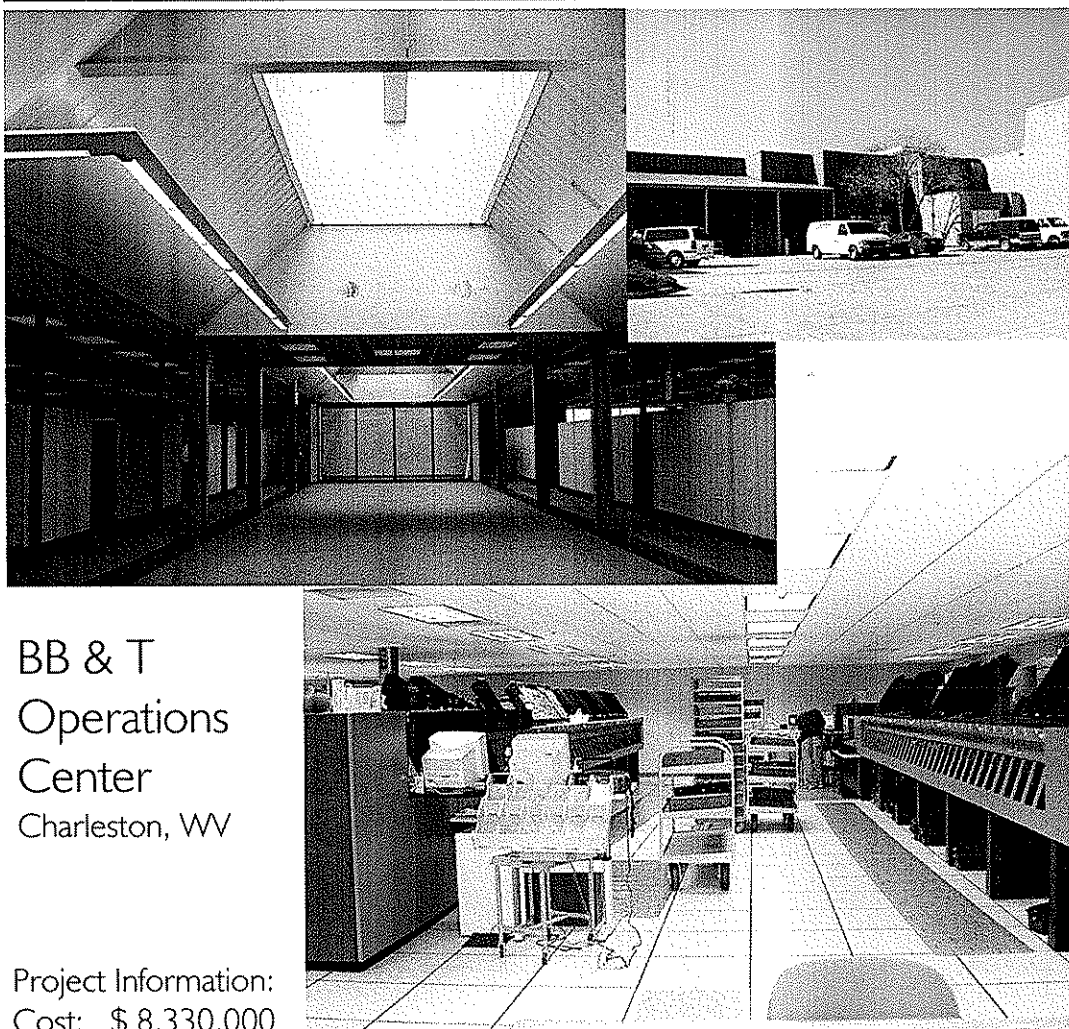
GW MIDDLE SCHOOL
Putnam County Schools
Eleanor, West Virginia

Architecture
Engineering
Planning
Interiors
Visualizations



JERRY
GOFF
ARCHITECTURE

Design Experience



BB & T
Operations
Center
Charleston, WV

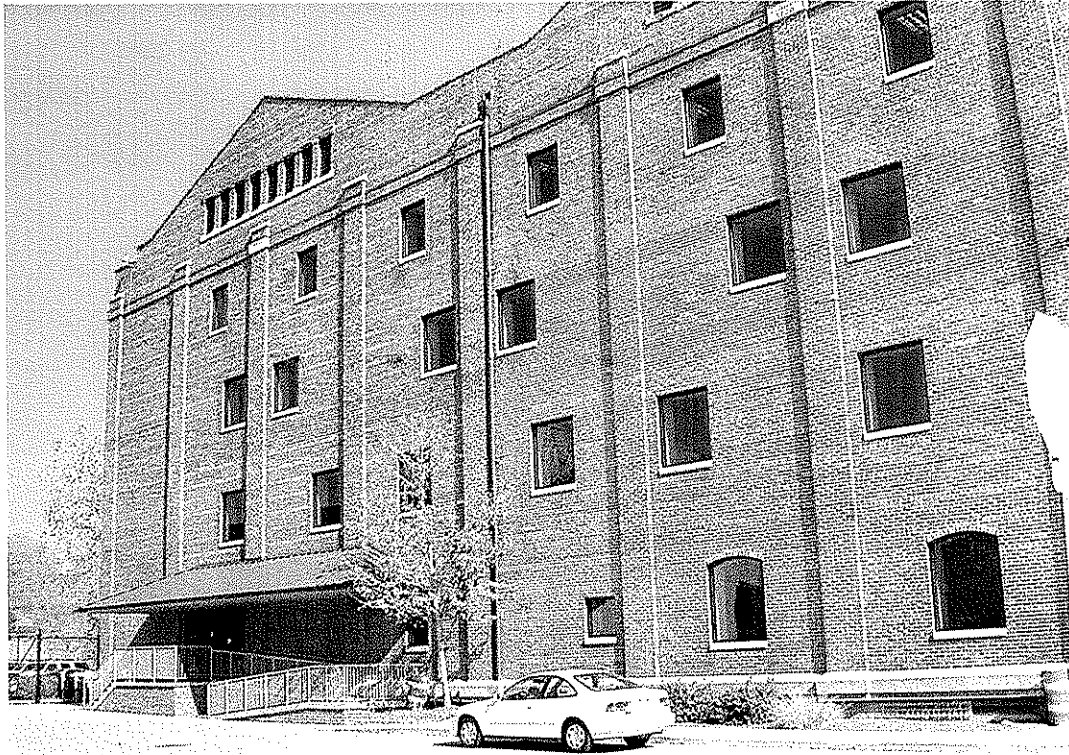
Project Information:
Cost: \$ 8,330,000
Renovated Area: 85,000 sf
Dual Feed Electric
1240 KVA Emerg. Gen.
Pre-Action Fire Suppression
40,000 sf raised access floor

Architecture
Engineering
Planning
Interiors
Visualizations



JERRY
GOFF
ARCHITECTURE

Design Experience



Project Information:

Renovation Project

Cost: \$ 3,500,000

Area: 40,000 sf

4 - Story

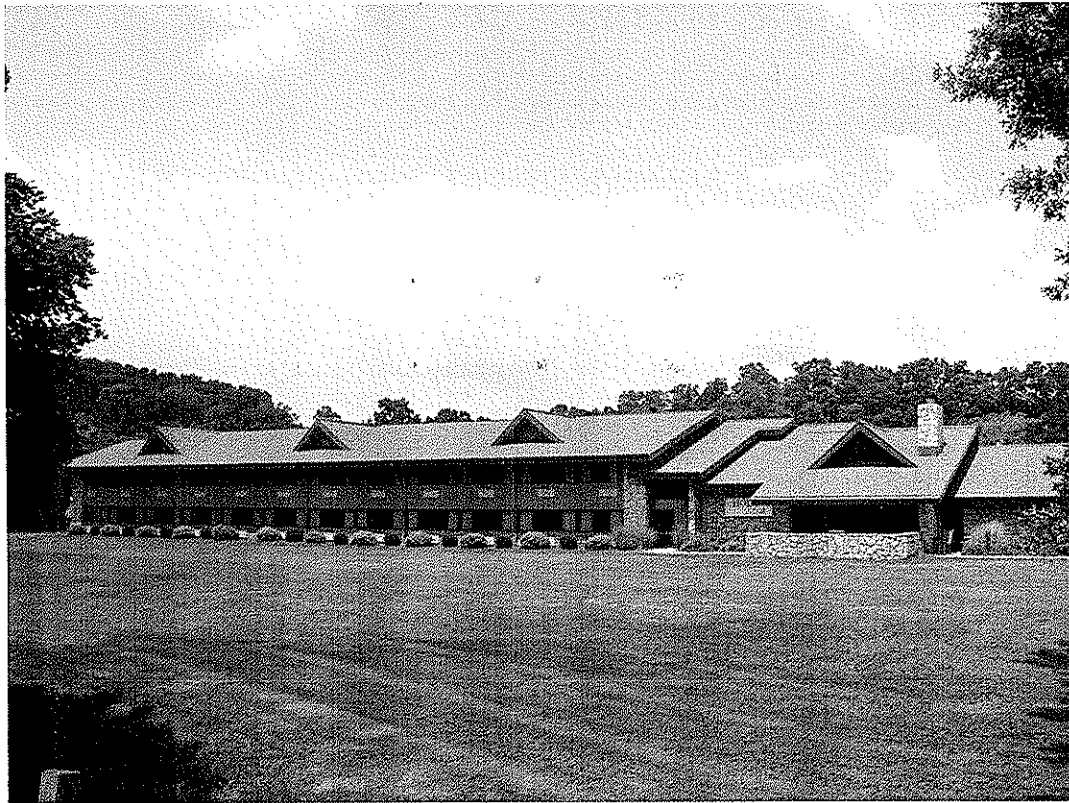
BB & T Banking
Piedmont Road
Training & Resource Center
Charleston, West Virginia

Architecture
Engineering
Planning
Interiors
Visualizations



JERRY
GOFF
ARCHITECTURE

Design Experience



CEDAR LAKES LODGE

Ripley, West Virginia

Project Information:

2- Story / 20,900 SF
50 Guest Rooms
Conference Rooms
Warming Kitchen

Owner:
West Virginia
State Board of Education

Architecture
Engineering
Planning
Interiors
Visualizations



JERRY
GOFF
ARCHITECTURE

Project Experience

ARMORY PROJECTS

Gassaway Armory Addition & Renovation
Camp Dawson Vertical Skills Building – Interior Build-out
Camp Dawson Building 242 Data Center
Coonskin Complex - AG Storage & Recruiting Off. Renov.
Coonskin Complex AG Office Renovation
Coonskin Complex Mail Room & Loading Dock
CST Addition - St. Albans Readiness Center
St. Albans Armory
St. Albans Armory Addition
Charleston Armory Headquarters Building Renovation
ADA Renovation - Princeton Armory
ADA Renovation - Fairmont Armory
ADA Renovation - Bluefield
Camp Dawson Barracks, Kingwood, WV
Classroom Training Building - Camp Dawson
Senior Officer's Quarters - Camp Dawson
Camp Dawson (OMS) Organizational Maintenance Shop
Huntington Armory
Huntington Armory Addition
Huntington (OMS) Organizational Maintenance Shop
USPFO Addition - Buckhannon
Renovations and Modifications:
Dunbar
St. Albans
Montgomery
Salem
Gassaway
Buckhannon
USPFO - Buckhannon
Point Pleasant
Spencer
Oak Hill
Coonskin Armory Headquarters 2-Story Addition



JERRY GOFF AIA
ARCHITECTURE

HEALTH CARE FACILITIES

River Valley Community Health & Wellness Center
Coplin Memorial Community Health Center
Roane General Hospital Rural Health Clinic
Jackson General Hospital Rural Health Clinic Renovation
River Partners Medical Office Building
Ashton Metro MRI Center
Thomas Memorial Hospital:
 ICU / CCU Renovation
 Vine Street Parking Lot
 Medical Office Building South
 Dr. Sibley Medical Office Suite
 Dr. Deer Medical Office Suite
 Dr. John/Taravath Medical Office Suite
 Dr. Hively Medical Office Suite
 Dr. Lagos Medical Office Suite
 Dr. Bonfiglio Medical Office Suite
 Dr. Shah Medical Office Suite
 Outpatient Recovery Lounge
 Wing H - East Pharmacy Renovation
 X-ray Suite Renovation
 Third Floor Nurses Station Renovation
 2-West Renovation
 Sleep Therapy - EEG-EMG
 Mammography Office Suite
 Family Practice Suite
 ES Therapy Room
 Cardiovascular Services Renovation
 Orthopedic Surgeons Suite for Dr. Soulsby
 OB Medical Suite for Dr. Patel
 Pre-Admission Testing Suite
 Morgue and Autopsy Renovation
Roane General Hospital
 Solarium & Long Term Care Renovation
 Clinic Registration Renovation
 OB & Med Surgical Unit Renovation
 ER & Lab Addition
 ER, Outpatient Recovery Addition
 CT Scan Addition
Roane County Health Center
Boone County Health Center
Jackson General Hospital
 Emergency and Waiting Room Addition
Ashton Place Medical Center - Suite Construction
Bone and Joint Surgeons Medical Building



JERRY GOFF AIA
ARCHITECTURE

BANKS & CREDIT UNIONS

Peoples Federal Credit Union – Pt. Pleasant
Union Trades Federal Credit Union
West Virginia Federal Credit Union – St. Albans
West Virginia Federal Credit Union – So. Charleston
Pioneer Federal Credit Union – Charleston Renovation
Pioneer Federal Credit Union – Oak Hill Renovation
BB & T Operations Center Renovation
BB & T Bullitt Building Renovation
BB & T Covington, Va.
One Valley Bank - Town Center Mall Renovation
One Valley Bank - 38th Street, Kanawha City
One Valley Bank - Beckley
One Valley Bank - Piedmont Operations Center
One Valley Bank - Princeton
One Valley Bank - Ceredo
One Valley Bank - West Side
One Valley Bank - Vienna
One Valley Bank - Teays Valley
One Valley Bank - Morgantown
One Valley Bank - St. Albans
One Valley Bank - St. Albans/Drive-In Facility
One Valley Bank - South Parkersburg
One Valley Bank - Ravenswood Facility Study
One Valley Bank - Ripley Site Feasibility Study
City National Bank - St. Albans (Corporate Prototype)
Rock Branch Community Bank
Peoples Federal Credit Union
Peoples Federal Credit Union - Eleanor
First National Bank of Spencer
First National Bank of Spencer - Drive-In Facilities
First National Bank of Ronceverte
Citizens National Bank - St. Albans
Poca Valley Bank
Citizens National Bank - Elkins
National Bank of Commerce - Drive-In Facility



JERRY GOFF AIA
ARCHITECTURE

RELIGIOUS

Mount Vernon Baptist Church – Sanctuary Addition
Dunbar First Baptist Church Office & Parlor Addition
St. Andrew United Methodist Church Elevator Addition
River Lake Methodist Church Addition & Renovation
St. Paul Baptist Church
Steele Memorial United Methodist Church
The Church of Jesus Christ of Latter-Day Saints
East Williamson Baptist Church Addition
Cedar Grove Baptist Church Addition
Winfield United Methodist Church
Oak Hill United Methodist Church
Humphrey's United Methodist Church
Dunbar First United Methodist Church
Aldersgate United Methodist Church
Cross Lanes Baptist Church
Christian Alliance Church
Alderson-Broadus Chapel
North Hills Baptist Church
Old Kanawha Baptist Church
St. Albans First Baptist Activities Building
Hurricane First Baptist Church
Grace Lutheran Church Addition
First Baptist Church Renovations - South Charleston
Fisher Memorial Chapel
Mt. Calvary Baptist Church
Coal Fork Methodist Church
Teays Valley Church of God
Teays Valley Presbyterian
Teays Valley Presbyterian Addition
Rebecca Chapel
Community Chapel Renovations
Dunbar Mountain Mission Church
North Charleston Baptist Church Renovations
Hurricane Presbyterian Church
Ferguson Memorial Baptist Church
Ansted Baptist Church
Teays Valley Missionary Baptist Church
Poca United Methodist Church
St. Paul United Methodist Church
Fairlawn Baptist Church
Highlawn Baptist Church Addition
Emmanuel Baptist Church Renovations
New Life Church Addition
Randolph Street Baptist Church Classroom Building
Teays Valley Church of God Sanctuary Addition
Hurricane Baptist Sanctuary & Classroom Building
Riverlawn Presbyterian Sanctuary & Classroom Building
Highlawn Presbyterian Renovation
Poca United Methodist Sanctuary Addition



JERRY GOFF AIA
ARCHITECTURE

LODGING, CONFERENCE CENTERS AND RESTAURANTS

Cedar Lakes Lodge & Conference Center
Coonskin Lodge
Coonskin Cabins
Panther State Forest Main Complex Lodge
West Virginia Baptist Conference Center
Adult Conference Center - Diocese Wheeling-Charleston
Dunbar Plaza Travelodge
Dunbar Plaza 4-Story Travelodge Addition
Staunton Virginia Holiday Inn Renovation
Cornerstone Restaurant
Bluefield Sheraton Inn
Monsanto Dining Room Renovations
Ammar Seafood Restaurant
Blacksburg Holiday Inn Renovations
Crossroads Mall Motel & Restaurant

RECREATIONAL

KCPRC - Shawnee Clubhouse
KCPRC - Shawnee Sports Center
KCPRC - Pioneer Park Clubhouse & Swimming Pool
KCPRC - Coonskin Family Center
KCPRC - Coonskin Park Shelter
Dunbar Recreation Center
Wine Cellar Park - Dunbar
St. Albans Recreation Center
St. Albans Swimming Pool
Clay County Swimming Pool & Bathhouse
WV Baptist Conference Center Swimming Pool
WV Rehab Center Recreational Park
CPD - Cato Park Swimming Pool
CPD - King Center Health Club Addition
Piedmont Elementary Urban Park
Oakmont Park
Cato Park Golf Pro Shop
Woodland Circle Comfort Station
St. Albans Boat Ramp



JERRY GOFF AIA
ARCHITECTURE

ELEMENTARY SCHOOLS

Buffalo Elementary - Media Center Addition
Winfield Elementary - 1998 10 Classroom Addition
West Teays Elementary
West Teays Elementary Addition
Hurricane Town Elementary - 5 Classroom Addition
Eastbrook Elementary
West Teays Elementary
Hurricane Town Elementary
Lakeside Elementary
Rock Branch Elementary Multi-Purpose Room Addition
Rock Branch Elementary Renovation
Hometown Elementary
Winfield Elementary 10 CR Addition
Conner Street Elementary
Conner Street Elementary Addition
George Washington Elementary Addition
Poca Elementary Additions
Poca Elementary Re-Roofing
Ruthlawn Elementary School
Alum Creek Elementary School
Alum Creek Elementary School Addition
Lakewood Elementary School
Lakewood Elementary School Addition
Alban Elementary School Addition
Woodlawn Elementary School
Tiskelwah Elementary School Multi-Purpose & Kitchen
West Hamlin Elementary
Hamlin Elementary Addition

MIDDLE SCHOOLS

Hurricane Middle School - 2000 Addition
Winfield Middle School - CR Addition & Cafeteria Renov
Hurricane Middle School - 1995 Phase 1-16 CR Addition
Winfield Middle School Addition
Winfield Middle School Re-Roofing
Poca Middle School Addition
St. Albans Junior High Site Development
St. Albans Junior High Fire Corrections & Band Room
Hayes Junior High School Classroom Addition



JERRY GOFF AIA
ARCHITECTURE

HIGH SCHOOLS

Hurricane High School - HVAC Replacement
Hurricane High School - 3 Classroom Addition
Winfield High School Classroom Addition
Hurricane High School
Hurricane High School Classroom Addition
Poca High School - HVAC Replacement
Poca High School
Poca High School Classroom Addition
Winfield High School
Buffalo High School Addition
Buffalo High School Re-Roofing
Harts High School Renovation
Harts High School Addition
Hamlin High School Locker Building

SPECIAL USE FACILITIES

Putnam County Schools Operation Center
Putnam County Schools Bus Garage
Putnam County Vocational-Technical Center
Putnam County Vocational-Technical Center Re-Roofing
Winfield Special Education Center
Putnam County Schools Fire Code Corrections & Renov
Owens Center - TMR
Lincoln County Resource Materials and Admin Building

COLLEGES AND UNIVERSITIES

WVSC - Dawson Hall Renovation
WVSC - Campus Pedestrian Mall - Phase I
WVSC - Visitor's Court Plaza
WVSC - Erickson Alumni Center
WVSC - Alumni Court Plaza
WVSC - East Hall Renovation
WVSC - Administration Building Renovation
WVSC - Drain-Jordan Library
WVSC - Gore Hall Renovation
WVSC - Sullivan Hall Renovation
WVSC - Wallace Hall Renovation
WVSC - Fine Arts Building Renovation
WVSC - Jones Hall Re-Roofing
WVSC - Student Union Lobby
WVSC - Campus Signs
Southern West Virginia Community College



JERRY GOFF AIA
ARCHITECTURE

LIBRARIES

Hurricane High School Library
Morgantown Public Library
Summersville Public Library
Cross Lanes Public Library
Hurricane Public Library
Nitro Public Library Addition
West Huntington Public Library
White Sulphur Springs Public Library
New Haven Public Library
Drain-Jordan Library - W. Va. State College
Dunbar Public Library
Richwood Public Library
New Martinsville Public Library
Roane County Alpha Regional Library
Elk Valley Public Library
Clendenin Public Library Renovations
St. Albans Public Library

OFFICES

Tuppers Creek Professional Office Building
Charleston Home Builders Association Office Building
Putnam County Schools Operations Center Interior
Putnam County Schools Phase II Operations Center Add
B. F. Goodrich Corporate Office Building - Union
B. F. Goodrich Break Room
Snap-On Tool Corporation Office and Warehouse
Kanawha Valley Scales Office and Warehouse
NECA National Electrical Contractors Association Office
Monsanto Corporate Office Building - Nitro Plant
Monsanto Drivers Staging Building
Monsanto Vehicle Services Shop
FMC Office Addition
Union Carbide Silicone II Control Center
Williams & Williams CPA Office Building
Boy Scout Headquarters Building
Carbon Fuel Office Building
WV State Fairgrounds Office Building - Fairlea
Howe Medical Office Building
Peyton Law Office
BCM Laboratories Building
David Freshwater Office Building
Westvaco Office Addition - Rupert



JERRY GOFF AIA
ARCHITECTURE

GOVERNMENTAL

St. Albans Post Office
St. Albans Recreation Center
Clay County Courthouse
Roane County Courthouse
Boone County Human Services Center
Dunbar Fire Station
St. Albans Fire Station
Highlawn Fire Station - St. Albans
Hamlin Community Building
Main Street Plaza - St. Albans
Dunbar Downtown Revitalization Project
Kanawha Children's Home Renovations
Hansford Community Center Renovation
Ohio Avenue Revitalization
Boone County Jail Renovation
St. Albans City Building Renovation
Dunbar Sr. Citizens Center Renovation
Kanawha County Emergency Ambulance Authority
Bend Area Community Center - New Haven

COMMERCIAL

C & O Motors Lexus Showroom - St. Albans
Allegheny Freight Building
Parkway Market Addition



JERRY GOFF AIA
ARCHITECTURE