

West Virginia Army National Guard

Architectural and Engineering Services

RFQ No. DEFK9015

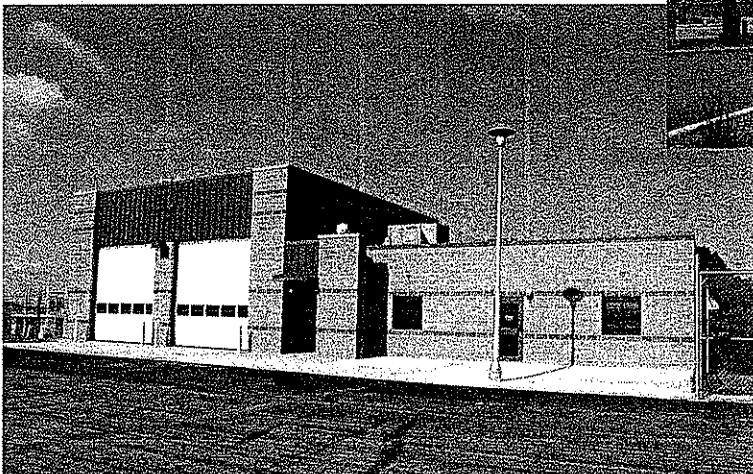
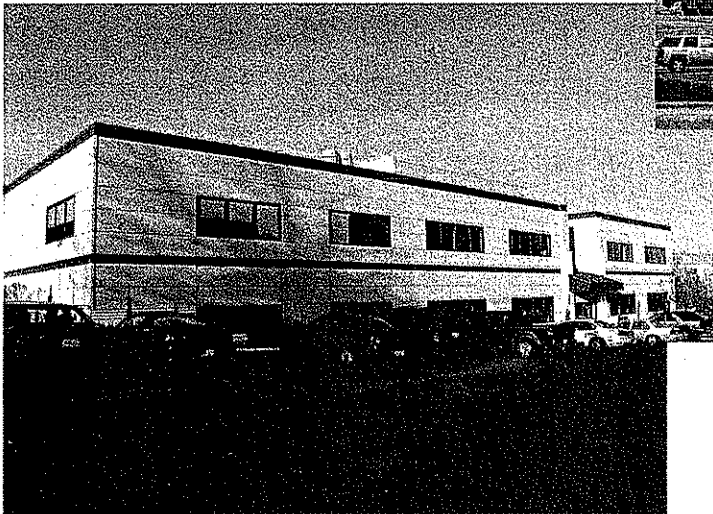
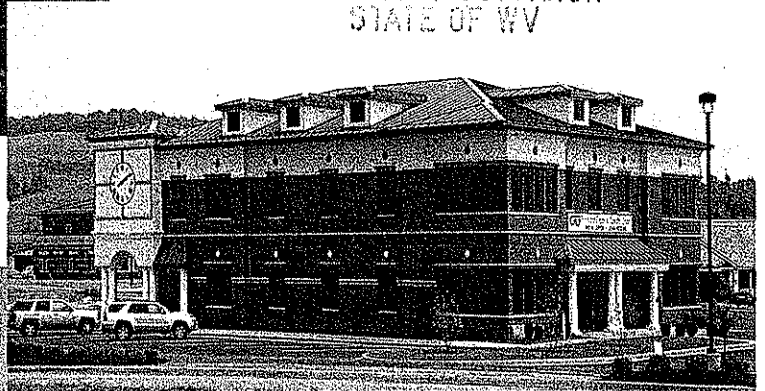
February 26, 2009

EXPRESSION OF INTEREST

RECEIVED

2009 FEB 25 P 12: 28

PURCHASING DIVISION
STATE OF WV





State of West Virginia
 Department of Administration
 Purchasing Division
 2019 Washington Street East
 Post Office Box 50130
 Charleston, WV 25305-0130

Request for Quotation

RFQ NUMBER:
 DEFK9015

PAGE:
 1

ADDRESS CORRESPONDENCE TO ATTENTION OF:
 JOHN ABBOTT
 304-558-2544

RFQ COPY
 TYPE NAME/ADDRESS HERE

DIV ENGINEERING & FACILITIES
 ARMORY BOARD SECTION

 1707 COONSKIN DRIVE
 CHARLESTON, WV
 25311-1099 341-6368

DATE PRINTED	TERMS OF SALE	SHIP VIA	FOB	FREIGHT TERMS
02/11/2009				

BID OPENING DATE: 02/26/2009 BID OPENING TIME 01:30PM

LINE	QUANTITY	UOP	CAT NO	ITEM NUMBER	UNIT PRICE	AMOUNT
0001	1	LS		906-00-00-001		
ARCHITECT/ENGINEERING SERVICES, PROFESSIONAL CONTRACT TO PROVIDE ARCHITECT & ENGINEERING SERVICES FOR THE WEST VIRGINIA ARMY NATIONAL GUARD, BUCKHANNON READINESS CENTER, UPSHUR COUNTY, WEST VIRGINIA, PER THE ATTACHED DOCUMENTATION. NOTICE A SIGNED BID MUST BE SUBMITTED TO: DEPARTMENT OF ADMINISTRATION PURCHASING DIVISION BUILDING 15 2019 WASHINGTON STREET, EAST CHARLESTON, WV 25305-0130 THE BID SHOULD CONTAIN THIS INFORMATION ON THE FACE OF THE ENVELOPE OR THE BID MAY NOT BE CONSIDERED: SEALED BID BUYER: JOHN ABBOTT----- RFQ. NO.: DEFK9015----- BID OPENING DATE: 02/26/2009-----						

SEE REVERSE SIDE FOR TERMS AND CONDITIONS

SIGNATURE 	TELEPHONE 304-296-8216	DATE February 24, 2009
TITLE President and COO	FEIN 55-0516286	ADDRESS CHANGES TO BE NOTED ABOVE

WHEN RESPONDING TO RFQ, INSERT NAME AND ADDRESS IN SPACE ABOVE LABELED 'VENDOR'



State of West Virginia
 Department of Administration
 Purchasing Division
 2019 Washington Street East
 Post Office Box 50130
 Charleston, WV 25305-0130

Request for Quotation

RFQ NUMBER
 DEFK9015

PAGE
 2

ADDRESS CORRESPONDENCE TO ATTENTION OF:
 JOHN ABBOTT
 304-558-2544

RFQ COPY

TYPE NAME/ADDRESS HERE

SHIP TO

DIV ENGINEERING & FACILITIES
 ARMORY BOARD SECTION

 1707 COONSKIN DRIVE
 CHARLESTON, WV
 25311-1099 341-6368

DATE PRINTED	TERMS OF SALE	SHIP VIA	P.O.B.	FREIGHT TERMS
02/11/2009				

BID OPENING DATE: 02/26/2009 BID OPENING TIME 01:30PM

LINE	QUANTITY	UQP	CAT NO	ITEM NUMBER	UNIT PRICE	AMOUNT
BID OPENING TIME:				1:30 PM-----		
PLEASE PROVIDE A FAX NUMBER IN CASE IT IS NECESSARY TO CONTACT YOU REGARDING YOUR BID:						
				304-296-8216-----		
CONTACT PERSON (PLEASE PRINT CLEARLY):						
				Richard A. Colebank, PE, PS-----		
***** THIS IS THE END OF RFQ DEFK9015 ***** TOTAL:						_____

SEE REVERSE SIDE FOR TERMS AND CONDITIONS

SIGNATURE <i>Richard A. Colebank</i>	TELEPHONE 304-296-8216	DATE February 24, 2009
TITLE President and COO	FAX 55-0516286	ADDRESS CHANGES TO BE NOTED ABOVE

WHEN RESPONDING TO RFQ, INSERT NAME AND ADDRESS IN SPACE ABOVE LABELED 'VENDOR'

STATE OF WEST VIRGINIA
Purchasing Division**PURCHASING AFFIDAVIT****VENDOR OWING A DEBT TO THE STATE:**

West Virginia Code §5A-3-10a provides that: No contract or renewal of any contract may be awarded by the state or any of its political subdivisions to any vendor or prospective vendor when the vendor or prospective vendor or a related party to the vendor or prospective vendor is a debtor and the debt owed is an amount greater than one thousand dollars in the aggregate.

PUBLIC IMPROVEMENT CONTRACTS & DRUG-FREE WORKPLACE ACT:

If this is a solicitation for a public improvement construction contract, the vendor, by its signature below, affirms that it has a written plan for a drug-free workplace policy in compliance with Article 1D, Chapter 21 of the *West Virginia Code*. The vendor **must** make said affirmation with its bid submission. Further, public improvement construction contract may not be awarded to a vendor who does not have a written plan for a drug-free workplace policy in compliance with Article 1D, Chapter 21 of the *West Virginia Code* and who has not submitted that plan to the appropriate contracting authority in timely fashion. For a vendor who is a subcontractor, compliance with Section 5, Article 1D, Chapter 21 of the *West Virginia Code* may take place before their work on the public improvement is begun.

ANTITRUST:

In submitting a bid to any agency for the state of West Virginia, the bidder offers and agrees that if the bid is accepted the bidder will convey, sell, assign or transfer to the state of West Virginia all rights, title and interest in and to all causes of action it may now or hereafter acquire under the antitrust laws of the United States and the state of West Virginia for price fixing and/or unreasonable restraints of trade relating to the particular commodities or services purchased or acquired by the state of West Virginia. Such assignment shall be made and become effective at the time the purchasing agency tenders the initial payment to the bidder.

I certify that this bid is made without prior understanding, agreement, or connection with any corporation, firm, limited liability company, partnership or person or entity submitting a bid for the same materials, supplies, equipment or services and is in all respects fair and without collusion or fraud. I further certify that I am authorized to sign the certification on behalf of the bidder or this bid.

LICENSING:

Vendors must be licensed and in good standing in accordance with any and all state and local laws and requirements by any state or local agency of West Virginia, including, but not limited to, the West Virginia Secretary of State's Office, the West Virginia Tax Department, West Virginia Insurance Commission, or any other state agencies or political subdivision. Furthermore, the vendor must provide all necessary releases to obtain information to enable the Director or spending unit to verify that the vendor is licensed and in good standing with the above entities.

CONFIDENTIALITY:

The vendor agrees that he or she will not disclose to anyone, directly or indirectly, any such personally identifiable information or other confidential information gained from the agency, unless the individual who is the subject of the information consents to the disclosure in writing or the disclosure is made pursuant to the agency's policies, procedures and rules. Vendor further agrees to comply with the Confidentiality Policies and Information Security Accountability Requirements, set forth in <http://www.state.wv.us/admin/purchase/privacy/noticeConfidentiality.pdf>.

Under penalty of law for false swearing (*West Virginia Code* §61-5-3), it is hereby certified that the vendor affirms and acknowledges the information in this affidavit and is in compliance with the requirements as stated.

Vendor's Name: Alpha Associates, Incorporated
Authorized Signature: [Signature] Date: 2-24-09



ARCHITECTS • ENGINEERS • SURVEYORS

February 20, 2009

Purchasing Division
2019 Washington Street, East
P.O. Box 50130
Charleston, WV 25305-0130

Attn: Mr. John Abbott

Re: DEFK9015 – Expression of Interest - Buckhannon Readiness Center

Dear Mr. Abbott,

Alpha Associates, Incorporated is pleased to submit this proposal to provide architectural and engineering design services for the West Virginia Army National Guard, Buckhannon Readiness Center in Upshur County. Alpha has been serving the State of West Virginia since 1969. We would like to add your project to our list of successfully completed projects.

Over the past 40 years Alpha has been the lead architect and engineer for many new construction projects throughout West Virginia. We provide services from the conceptual idea phase through final acceptance of finished structure and appurtenances.

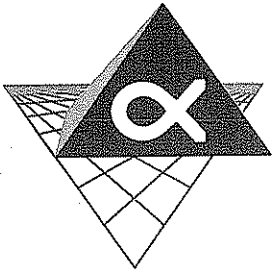
Design Team

The key to any successful project is the Design Team. Alpha has carefully selected a team of professionals with past experience and current knowledge that will complete your project on time and within budget.

Alpha Associates, Incorporated is a multi-disciplined design firm. We provide services in the following areas:



- Architectural Design
- Civil Engineering
- Structural Engineering
- Interior Design
- Surveying
- Landscape Design



Alpha's team includes 40 dedicated professionals and support staff who will make your project a priority.



Important to any project are the Mechanical, Electrical and Plumbing Engineering aspects. Alpha has selected Miller Engineering to join our team and provide these services. Alpha Associates and Miller Engineering have produced multiple projects together. We are currently working together on the West Virginia Army National Guard project for the Parkersburg Armory.

P|C|S

Cost control is a priority for all projects. Alpha has selected PCS, headquartered in Cleveland, OH to provide cost estimating services for this project. PCS has been providing cost estimating services for over 20 years. Alpha Associates and PCS have worked together on multiple projects.

Our design team has the competence and ability to design a fully functional facility that will exceed the West Virginia Army National Guard's expectations.

Throughout the duration of the design, Alpha will be the lead design firm and single point of contact for your project. The expression of interest that follows includes information and complete resumes on the Team selected.

Summary

Alpha's design team is ready to begin the design of your Buckhannon Readiness Center immediately. The Team has the knowledge, capacity and ability to complete all aspects of your project in a timely manner. We look forward to sitting down with you in a formal interview to further detail the design team and our ideas. If you require further information from us, please call me at 304-296-8216 x102.

Sincerely,
Alpha Associates, Incorporated

Richard A. Colebank, PE, PS
President and COO
rcolebank@alphaaec.com

Project Organization

Alpha Associates, Incorporated

Alpha Associates, Incorporated has developed a team that will provide a multitude of services for the West Virginia Army National Guard. Based on Alpha's knowledge and understanding of this project, the team was developed to best fit your needs.

Projects at Alpha are managed by an owner of the firm. In your case, Richard A. Colebank, PE, PS, will be the Principal-In-Charge. Rick, the President and COO of Alpha will be your single point of contact and will manage not only Alpha's internal staff, but also the consultants we have chosen to supplement Alpha's in house services.

Project Understanding

The WV Army National Guard wishes to relocate two units from existing facilities that do not provide adequate space or conditions. The new Buckhannon Readiness Center is to be located in Upshur County, West Virginia. The center may include offices, conference room, garage, locker room, shower facilities, limited sleeping, and an assembly hall. This project may also include parking, storage, fueling station, landscape design, security lighting and fencing and a unique entry.

Alpha anticipates the following services needed for both the building and the site:

- Coordination with State Agencies
- Architectural Design
- Mechanical, Electrical, and Plumbing Design
- Civil/Structural Engineering Design
- Interior Design
- Surveying of Site
- Landscape Design

Project Approach

The following is a sample approach to how this project will be handled:

Programming Phase

This is the initial gathering of information and review stage. During this phase Alpha will interview the state agencies that will occupy the building to determine their programmatic requirements. This will help us determine the direction the design will take. Alpha will gather information and make recommendations.



Preliminary Design Phase

This phase of the project is the Preliminary Design Phase. Alpha's Professional Design Staff will develop a design based upon your ideas, the needs of the West Virginia Army National Guard and from the information they have gathered. This first stage will develop the intent of the concept into a workable plan. A project schedule will be established in order to get a total understanding of your desired completion date.

Construction Documents Phase

Upon approval of the preliminary design and working directly with the West Virginia Army National Guard, Alpha will prepare construction plans and technical specifications. The purpose is to provide an accurate, complete set of plans and specifications that allow for accurate bids. Our thorough and well-coordinated plans serve to reduce the amount of change orders during construction.

Bid/Negotiations Phase

Alpha Associates, Incorporated has developed ways of attracting bidders to your project. We have established an area of our website (www.alphaaec.com) that allows prospective prime contractors, as well as subcontractors, to investigate projects out to bid. Over the past several months, we have noticed an increase in the number of bidders that are interested in our projects. This creates a more competitive bidding environment, thus giving you a better price.

Alpha Associates, Incorporated will assist you during the bidding process to provide prospective bidders with an "even playing field" to bid. This ensures you will receive the highest quality bids. Our services include answering contractors' questions, conducting a pre-bid conference and issuing clarifications. After receipt of bids, we will evaluate the bids and will assist the Owners with selection of a qualified contractor based on the bids received. We will also prepare the Construction Contracts for the Owner and Contractor to sign.

Construction Phase Services

Alpha Associates, Incorporated will provide a complete range of construction phase services including observation of the work, review and approval of Contractor pay applications, conducting progress meetings and providing technical assistance throughout the construction phase. During construction we will review the Contractors various project material submittals, develop color selections for your consideration and approval and perform a final "Punch List" inspection to assure satisfactory completion of the work. This is the phase of the project that is crucial to the ultimate success of your project. Our experienced team can successfully interact with the contractor and provide the direction needed for a successful project.





Organization Chart

Alpha Associates, Incorporated

Richard A. Colebank, PE, PS
President and COO
Alpha Associates, Incorporated
Principal-in-Charge, QA/QC Manager, Civil Engineer

James A. Davison, AIA
Vice President
Alpha Associates, Inc.
QA/QC

Matthew S. Breakey, AIA
Principal
Alpha Associates, Inc.
Project Manager

Miller Engineering
Mechanical, Electrical,
and Plumbing
Engineering

Charles B. Branch, PE
Principal
Alpha Associates, Inc.
Civil Engineer

Thomas Potts, AIA,
LEED-AP
Alpha Associates, Inc.
Architect

Charles B. Luttrell, PE
Principal
Alpha Associates, Inc.
Structural Engineer

PCS
Cost Estimating
Services

Multiple Disciplines are available for support staff. The individuals provided are the highest quality available in the industry with many years of experience.





Firm Profile

Alpha Associates, Incorporated

Firm Name: Alpha Associates, Incorporated

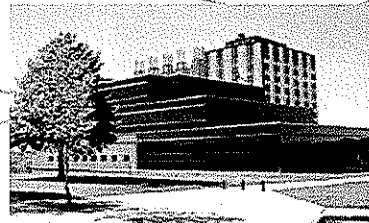
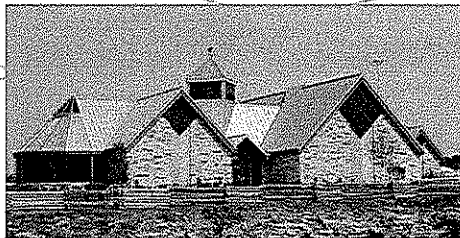
Corporate Office: 209 Prairie Avenue
Morgantown, West Virginia 26501

Eastern Regional Office: 535 West King Street
Martinsburg, West Virginia 25401

Incorporated: 1969; Morgantown, West Virginia

Firm Principals: Richard A. Colebank, PE, PS; President and COO
Richard W. Klein, PE, PS; Chairman and CEO
William A. Atwell, Jr., PE; Senior Vice President
James A. Davison, AIA; Vice President
Charles B. Luttrell, PE; Principal
Steven V. Buchanan, PE, PS; Principal
Matthew S. Breakey, AIA; Principal
Charles B. Branch, PE; Principal

Number of Employees: 40 Employees



Alpha Associates, Incorporated was established in 1969 and since that time has completed hundreds of projects throughout Morgantown and the state of West Virginia. Alpha's Corporate Office is located in Morgantown with our Eastern Regional Office located in Martinsburg.



MILLER ENGINEERING, INC.

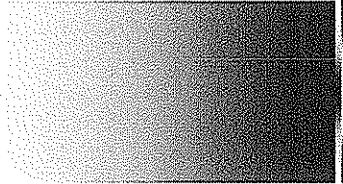
SUMMARY

Miller Engineering, Inc. (MEI) provides professional services to facility owners and operators, architects, and contractors throughout West Virginia, Pennsylvania and Western Maryland. MEI services range through all facets of mechanical, electrical, and plumbing design as well as construction administration and project management. We utilize the abilities of designers with many years experience in their area of expertise, teamed with younger designers on a “best resource for the project approach”. We also provide project management services at levels ranging from general oversight to complete project delivery through all phases of design and construction. Our personnel have worked in both the private and public sector and are familiar with many methods of project delivery from classic design/bid/build to full design/build with partnering.

MEI has developed the following philosophy to guide the performance of its services:

- Provide superlative design services to our clients in new construction, renovations, and daily operations.
- Perform work in a timely, accurate, and professional manner.
- Present multiple alternative and solutions whenever possible.
- Work with our clients to control first and life cycle costs.
- Be a technical “sounding board” for our clients in all situations.
- Strive to maintain professional competency through continuing education and training.

MEI utilizes a “practical application” approach to all projects throughout the design process to provide a “well rounded” result. This methodology emphasizes the best overall solution, meeting all the client’s needs, instead of just the best technical solution. We believe our small size provides a distinct advantage to our clients and affords us the freedom to easily team with the clients to achieve the overall best possible result.



Firm History

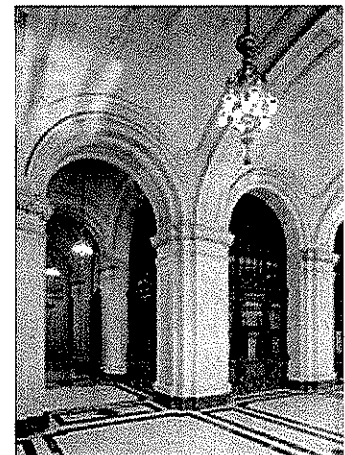
“P|C|S’s ability to provide **accurate cost estimates, with very early and sketchy information**, has helped us establish budgets on projects ranging from \$1 million to over \$80 million.”

*Tom Schwartzmier, PE
Director, Facilities &
Construction
UPMC Shadyside, Pittsburgh,
Pennsylvania*

P|C|S, headquartered in Cleveland, OH, with a branch office in Wheeling, WV, has been providing professional cost estimating services for over 20 years. P|C|S has extensive experience providing complete estimates to Owners, Architects, and Engineers at all phases of a project. Since 1988, P|C|S has been serving clients in the government, commercial, institutional, industrial, healthcare and education markets.

P|C|S has provided estimating services as a stand alone service for project Owners such as the West Virginia University, Department of General Services Administration, Harry S. Truman Federal Building, Howard M. Metzenbaum Federal Building & U.S. Courthouse, Cuyahoga County Department of Central Services, and the Cleveland Clinic Foundation.

We offer a complete menu of stand-alone design phase services. These include **cost consulting, value engineering, scheduling, constructability reviews, bid package strategies, bidder evaluations, and building evaluations & assessments.**



Howard M. Metzenbaum, Federal Building and US Courthouse, Cleveland, Ohio

P|C|S has developed over \$10 billion of construction project cost estimates. As an independent service, we provide in-house architectural, civil, structural, mechanical, electrical, plumbing, fire protection, and technology estimating to Owners and architectural firms nationally. Our accurate well-defined cost estimates are a critical step in successful projects and are significant when the value engineering process is undertaken because of our first-hand knowledge of all aspects of the building construction.

A lead estimator is assigned to each project with oversight from the estimating principal. Thus, each Client benefits from personalized contact with P|C|S’s principals and the highest level of estimating advisory and management experience. With four corporate principals, most with more than 25 years of experience, and 36 additional construction professionals, P|C|S still maintains a very hands-on approach with every project assignment.

P|C|S

Airport Case Studies

Project Description

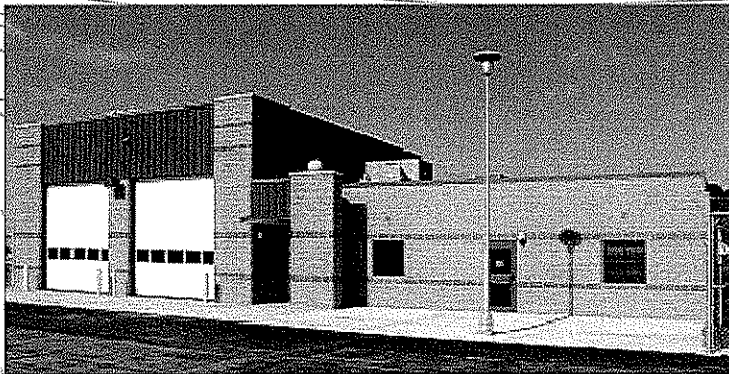
Morgantown Municipal Airport Air Rescue and Fire Fighting Building Morgantown, WV

Alpha Associates, Incorporated completed design of the latest building at the Morgantown Municipal Airport. The building serves as an Air Rescue and Fire Fighting Building, housing two fire trucks and equipment. Additional space for Airport Management offices and a training center are also included.

Construction of this \$1,020,000 building was completed in 2003.

At A Glance...

- 1 *Client:*
City of Morgantown
- 2 *Location:*
Morgantown, WV
- 3 *Completion Date:*
2003
- 4 *Size:*
7000 SF
- 5 *Construction Cost:*
\$1,020,000



Town of Ridgeley Community Center

NEW CONSTRUCTION

2008

PROJECT

Architectural Case Studies

Project Description

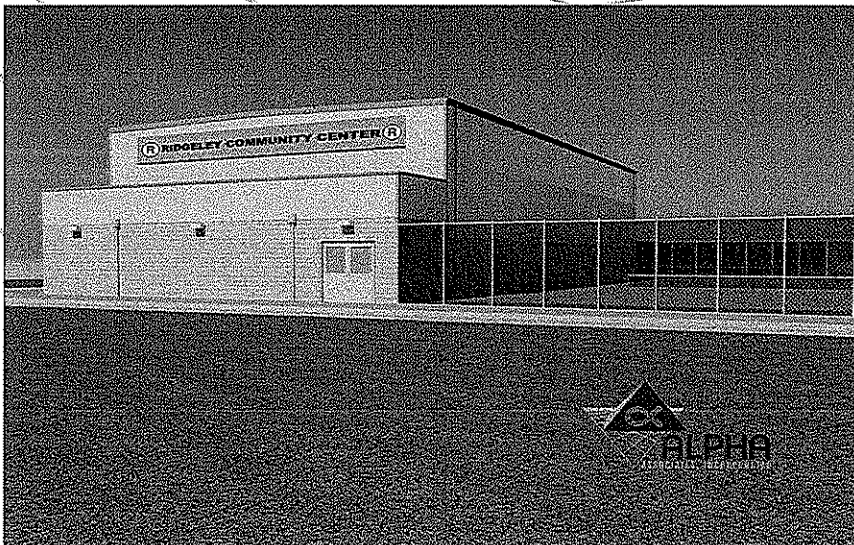
Town of Ridgeley Ridgeley, West Virginia

Alpha began the relationship with the Town of Ridgeley through a building evaluation for a potential adaptive reuse of an elementary school as a community center as part of a federal grant. The building evaluation aided the Town in determining construction cost for reuse that exceeded current funding.

As an alternative, a new building was proposed as a separate structure. The new project consists of a large multi-purpose room with support facilities including restrooms and an office. The center will provide practice space for youth basketball teams and open space that can be used for Town gatherings such as craft fairs. The design team strove to provide a quality structure that met the needs of the Town and the budget available.

At A Glance...

- 1 Client:
Town of Ridgeley
- 2 Location:
Ridgeley, WV
- 3 Completion Date:
2008
- 4 Size:
5,200 SF
- 5 Construction Cost:
Est. \$440,000



ARCHITECTS • ENGINEERS • SURVEYORS

Architectural Case Studies

Project Description

Parkersburg Armory Parkersburg, West Virginia

Alpha continues their relationship with the West Virginia Army National Guard with the renovation of a space currently designated as a rifle range at the Parkersburg Armory.

New offices, conference room, and break room provides new work space for officers. A secondary entrance is included in the design to serve the department that will occupy this space.

A fire alarm upgrade for the entire building is also included in the project scope as well as an alternate for an access control system and mass notification system.

At A Glance...

1

Client:
WV Army National Guard

2

Location:
Parkersburg, WV

3

Completion Date:
2009

4

Size:
2400 sq. ft. renovation
200 sq. ft. addition

5

Construction Cost:
TBD



Higher Education Case Studies

Project Description

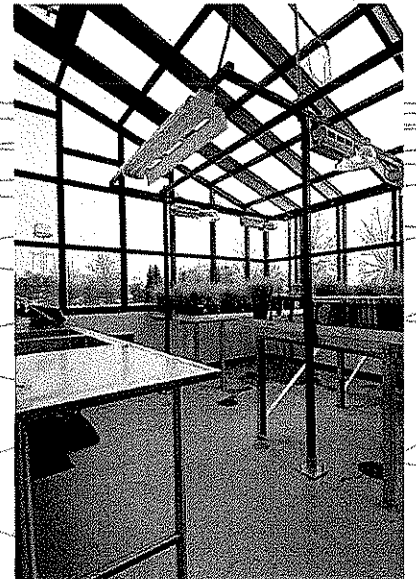
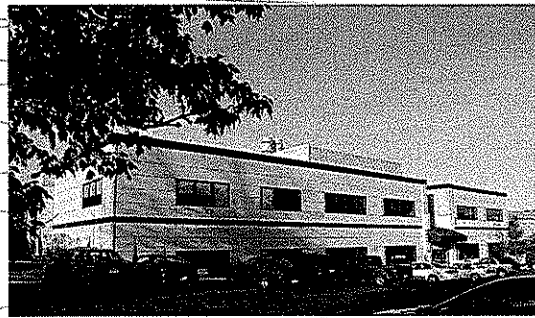
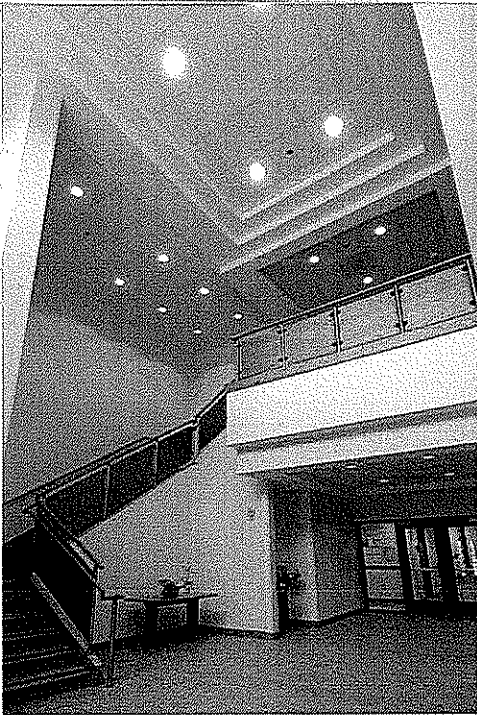
West Virginia University— South Agricultural Sciences Building Morgantown, WV

Alpha Associates, Incorporated provided architectural and engineering design services for a two-story addition to the south side of the Agricultural Sciences Building. The addition includes space for the Plant Pathology and Environment Microbiology Departments as well as research labs, lab support space, wet bench teaching labs, greenhouse, a 250 seat lecture hall and office space.

Alpha Associates has a cost estimating record that is very difficult to beat. This project came within less than an eighth of a percent of the low bid/contract amount.

At A Glance...

- 1 *Client:*
West Virginia University
- 2 *Location:*
Morgantown, WV
- 3 *Completion Date:*
2005
- 4 *Size:*
40,000 SF
- 5 *Construction Cost:*
\$7.3 Million



Architectural Case Studies

Project Description

BSGG Professional Building Morgantown, WV

Alpha is in the process of designing a Professional Medical Arts Building, anchored by Morgantown Dental Group with remaining areas developed as condominium style offices for other dental professionals. The other dental professionals will be "Referred" and "Preferred" professionals of Morgantown Dental Group.

Area will be approximately 8000 sq. ft. per floor. Height 3 and a half stories, with the half story being a partial basement, for mechanical system, etc.

At A Glance...

- 1 Client:
BSGG, LLC
- 2 Location:
Morgantown, WV
- 3 Completion Date:
Multi Phase Project
- 4 Size:
28,000 Square Feet
- 5 Construction Cost:
est. \$4Million



Camp Dawson Training Facility

ARCHITECTURAL AND
ENGINEERING DESIGN
SERVICES

Multiple Dates

1

Miscellaneous Case Studies

Project Description

Camp Dawson Training Facility Kingwood, WV

Alpha Associates, Incorporated provided complete architectural and engineering design services, contract documents and construction administration for the Phase II and Phase III buildings and site design for this West Virginia Army National Guard facility located in Kingwood, West Virginia.

Phase II facilities included 2 Barracks for 420 people, totaling 34,558 square feet and consisting of sleep quarters and restroom facilities; 4,930 square foot dining facility including kitchen, storage areas and seating for 163 persons; and a 2,448 square foot supply/ration breakdown building including work room, secure storage, office, freezer and cooler rooms.

Phase III facilities include a two-story Barrack to accommodate 210 people, 17,300 square foot building consisting of sleep quarters and restroom facilities, a 4,930 square foot dining facility including kitchen, storage areas and seating for 163 persons; and a 3,597 square foot Medical Troop Clinic containing two doctors' offices, two exam rooms, a waiting room, dental exam area, soil utility and medical supply room.

At A Glance...

- 1 *Client:*
Camp Dawson Training Facility
- 2 *Location:*
Kingwood, WV
- 3 *Completion Date:*
Multiple Dates
- 4 *Size:*
34,558 SF Phase II
17,300 SF Phase III
- 5 *Construction Cost:*
Multiple Contracts
- 6 *Project Relevance:*
 - Architectural design
 - Construction administration
 - Site planning
 - Federally funded



ARCHITECTS • ENGINEERS • SURVEYORS

**U.S. Coast Guard
Operations Systems
Center**

SITE AND CIVIL ENGINEERING
SERVICES PROJECT
1999

Government Case Studies

Project Description

**U.S. Coast Guard Operations Systems Center
Martinsburg, WV**

Working with DMJM Architects, Alpha Associates, Incorporated provided site and civil engineering services for this 75,000-square foot building. Services included site mapping, surveying, drainage design, sewer and water connections and storm water management. Alpha's staff also provided all necessary paperwork for the County's Planned Unit Development process.

At A Glance...

- 1 *Client:*
U.S. Coast Guard
Operations Systems
Center
- 2 *Location:*
Martinsburg, WV
- 3 *Completion Date:*
1999
- 4 *Size:*
75,000 SF Addition
- 5 *Construction Cost:*
N/A - Portion of Larger
Project
- 6 *Project Relevance:*
 - Site engineering
 - Permitting
 - Storm water
management
 - Surveying
 - Federally funded



Miscellaneous Case Studies

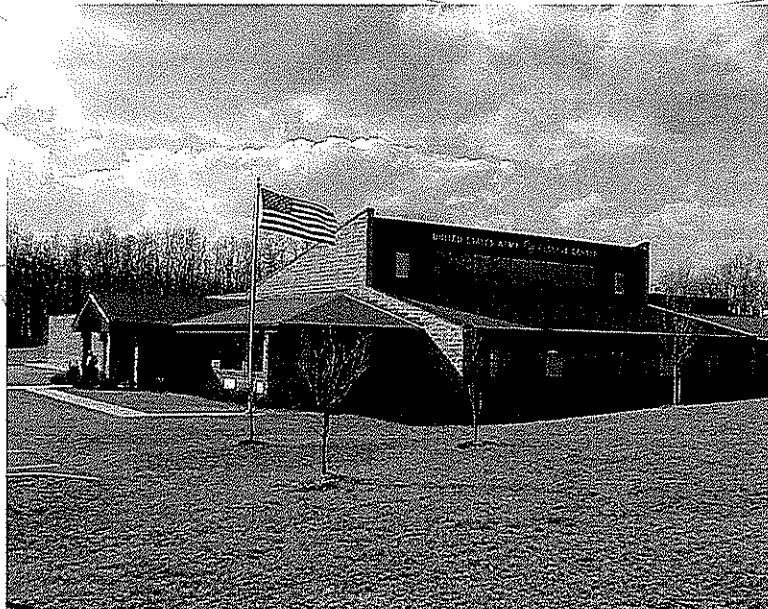
Project Description

**U.S. Army Reserve Center
 Beckley, WV**

Alpha Associates, Incorporated provided architectural and engineering design for a Training Building and Organizational Maintenance Shop at the U.S. Army Reserve Center in Beckley, West Virginia. The Training Building is 28,000 SF and includes offices, a multi-purpose room for general assemblies, drill formations and dining, library, food preparation area, rifle range, and arms vault and storage area. The 2,700 SF OMS houses a work and wash bays, storage areas, support offices, hazardous materials storage area and mechanical and battery rooms. Services for this U.S. Army Corps of Engineers contract also included site planning, utilities, road, and parking lot design for this 10-acre Reserve Center at the Raleigh Memorial Airport Industrial Park.

At A Glance...

- 1 *Client:*
U.S. Army Corps of Engineers
- 2 *Location:*
Beckley, WV
- 3 *Completion Date:*
1994
- 4 *Size:*
28,000 SF Addition
2,700 SF Addition
- 5 *Construction Cost:*
\$5.4 Million
- 6 *Project Relevance:*
 - Architectural design
 - Maintenance facilities
 - Site planning
 - Roadway design
 - Federally funded



Architectural Case Studies

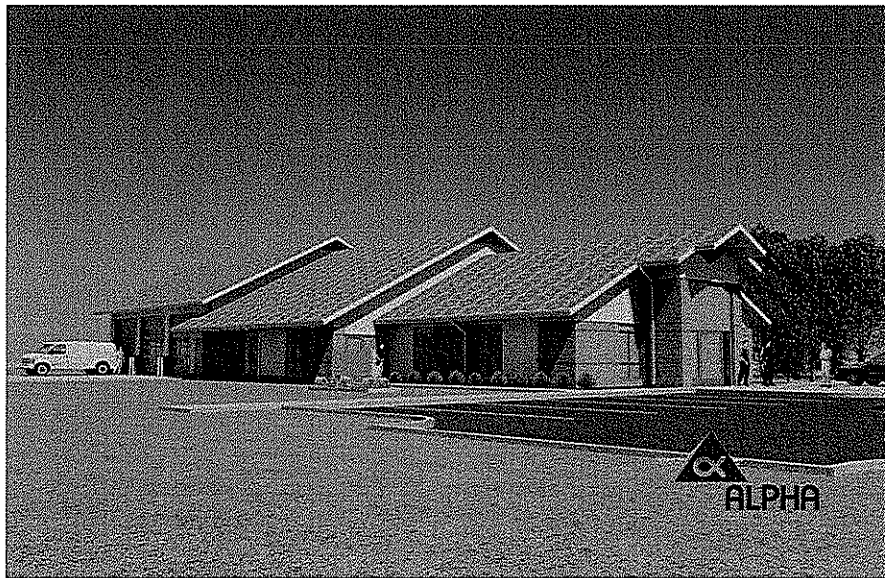
Project Description

Jefferson County Operations Center Martinsburg, West Virginia

Alpha Associates, Incorporated is designing a new Operations Center for the Jefferson County Ambulance Authority that will hold vehicle bays, sleeping quarters, training room, and office spaces. The building will be designed to blend into the surrounding development and have a civic presence.

At A Glance...

- 1 Client:
Jefferson County
Ambulance Authority
- 2 Location:
Ranson, WV
- 3 Completion Date:
Est. 2009
- 4 Size:
6,750 SF
- 5 Construction Cost:
TBD



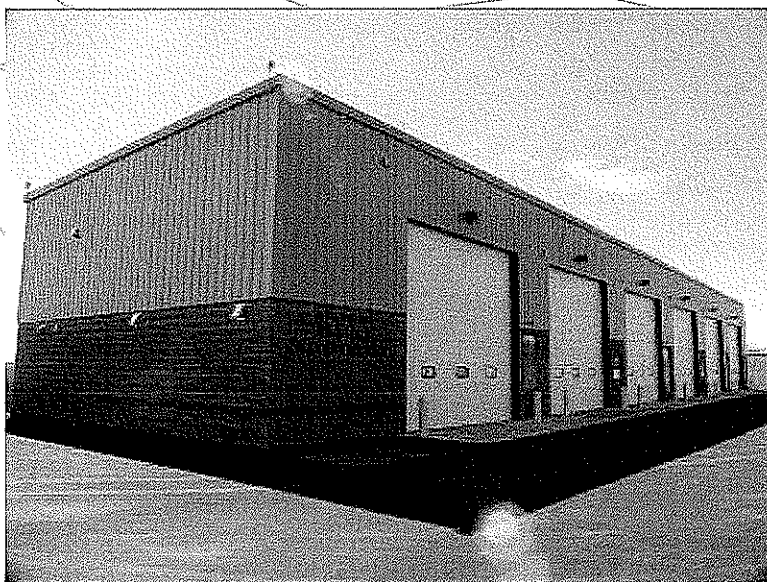
Airport Case Studies

Project Description

Morgantown Municipal Airport Maintenance Building Morgantown, WV

Alpha Associates, Incorporated designed and provided construction administration for the Hart Field Maintenance Building. The building provides garage and storage for the airport's snow-blowing and lawn-cutting machines. This project features six high-bay areas with one maintenance/repair pit. The balance of the area consists of auxiliary spaces such as dry and liquid storage, overhead crane hoist with access to a storage mezzanine. The building was constructed using split face block and metal panels over a pre-engineered steel rigid frame metal building.

ZDS Design provided Mechanical and Electrical Engineering Design for this project.



At A Glance...

- 1 Client:
City of Morgantown
- 2 Location:
Morgantown, WV
- 3 Completion Date:
2005
- 4 Size:
8000 SF
- 5 Construction Cost:
\$850,000



Miscellaneous Case Studies

Project Description

U.S. Army Reserve Center Rainelle, WV

Alpha Associates, Incorporated provided Architectural and Engineering Design for a Training Building and Organizational Maintenance Shop (OMS) at the U.S. Army Reserve Center in Rainelle, West Virginia. The Training Building is a 19,492-sf split face concrete block with accent bands and includes offices, a multi-purpose room, classrooms, offices, library, food storage and preparation areas, training centers, rifle range for three shooters with bullet trap, an arms vault and unit storage areas.

The 7,523-sf OMS houses two double work bays and one double wash bay, storage areas, support offices, hazardous materials storage area and mechanical and battery rooms. Services for this U.S. Army Corps of Engineers contract also included site planning, utilities, road and parking lot design for this 5-acre U.S. Army Reserve Center in Greenbrier County, West Virginia.



At A Glance...

- 1 *Client:*
U.S. Army Corp of
Engineers
- 2 *Location:*
Rainelle, WV
- 3 *Completion Date:*
1994
- 4 *Size:*
19,492 SF Training Bldg.
7,523 SF OMS
- 5 *Construction Cost:*
\$5.4 Million
- 6 *Project Relevance:*
 - Maintenance facilities
 - Federally funded



Airport Case Studies

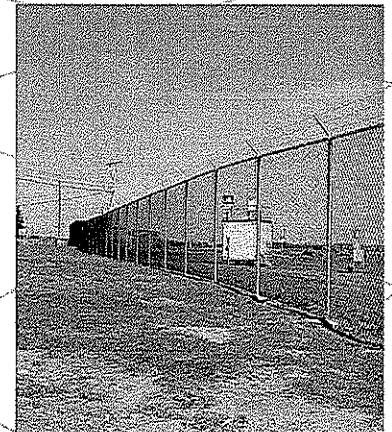
Project Description

Morgantown Municipal Airport Perimeter Fence Project Morgantown, WV

Alpha Associates, Incorporated provided surveying and consulting services for this project at the Morgantown Municipal Airport. This project was an 8-foot high fence around the perimeter of the Airport property with all necessary access gates. The 911 Emergency Gate was relocated during this project to accommodate emergency vehicles approaching from the north and south. Alpha's staff provided plans and specifications for this security enhancement. A boundary survey of the entire 600+ acre property was included in this project. Several important issues were addressed with this fencing project. First, the fence will provide a wildlife barrier that will assist in keeping wildlife from the property. Secondly, the fence provides security from individuals seeking to gain access to the site. The third issue is in regard to providing an easily maintained area around the fence. Alpha Associates, Incorporated also worked as a liaison between adjoining property owners and the owner during the planning and construction of the project.

At A Glance...

- 1 *Client:*
Morgantown
Municipal Airport
- 2 *Location:*
Morgantown, WV
- 3 *Completion Date:*
2001
- 4 *Size:*
N/A
- 5 *Construction Cost:*
\$800,000



Architectural Case Studies

Project Description

Wallace Fire Station Wallace, WV

Alpha Associates, Incorporated is designing a new fire station for the Town of Wallace in Harrison County. This station, designed to meet future needs consists of four bays, suitable for parking multiple fire vehicles. Additional support spaces include a radio room, lounge area and sleeping quarters.

At A Glance...

- 1 Client:
Wallace Volunteer
Fire Department
- 2 Location:
Wallace, WV
- 3 Completion Date:
TBD
- 4 Size:
11,000 SF
- 5 Construction Cost:
Est. \$1,052,000



SUMMARY

Mr. Colebank is President and Chief Operating Officer of the firm. Mr. Colebank has been with Alpha Associates, Incorporated since 1985. He began his career with Alpha as a staff engineer and progressed through the ranks from Project Manager to his current position. Mr. Colebank has worked with diverse clients such as West Virginia University, City of Morgantown, The West Virginia Division of Highways, WVU Foundation and the Morgantown Municipal Airport, as well as numerous private clients. Since 1988, Mr. Colebank has been the Principal-In-Charge of many of the Civil Engineering projects developed at Alpha. In his current capacity, Mr. Colebank provides financial and administrative guidance for the day-to-day operations of the company while continuing to manage Civil Engineering Projects.

PROFILE

Broad-based responsibilities in the following areas:

- Project Management
- Business Operations and Financial Management
- Quality Assurance/Quality Control
- Civil Engineering Project Management and Design
- New Business Development

PROFESSIONAL HIGHLIGHTS

PRINCIPAL-IN-CHARGE

Transportation Projects:

- Morgantown Municipal Airport-IDIQ Contract; Morgantown, WV
- Route 10 Relocation; Wyoming County, WV
- South High Street Bridge Replacement; Morgantown, WV
- Blackshere Bridge Replacement; Mannington, WV
- Lewis County High School Access Road and Bridge; Weston, WV
- University Avenue/Stadium Loop; Morgantown, WV
- West Buckeye Bridge; Blacksville, WV

Civil Engineering Projects:

- Monongalia General Hospital; Morgantown, WV
- WVU Research Park; Morgantown, WV
- West Virginia Medal of Honor Recipients Plaza; Hazelton, WV
- West Virginia Division of Highways I-77 Welcome Center; Williamstown, WV
- West Virginia High Technology Consortium Site Work; Fairmont, WV
- Greystone on the Cheat through Phase II; Morgantown, WV

Indefinite Delivery/Indefinite Quantity Contracts:

- Morgantown Municipal Airport Open End Contract; Morgantown, WV
- West Virginia Division of Highways Open End Contract; State of WV
- National Energy Technology Laboratories; Morgantown, WV
- West Virginia University Open End Contract; State of WV



RICHARD A. COLEBANK, PE, PS
PRESIDENT AND COO
CIVIL ENGINEER
rcolebank@alphaaec.com

EMPLOYMENT HISTORY

PRIVATE INDUSTRY: 1985 – Present Alpha Associates; Incorporated
1983 – 1985 Charles Townes and Associates, P.C.

CORPS OF ENGINEERS: 1983 US Army Corps of Engineers

EDUCATION

GRADUATE: West Virginia University
Masters – Business Administration; 1999

UNDERGRADUATE: West Virginia University
BS – Civil Engineering; 1982

QUALIFICATIONS

LICENSE: Professional Engineer:
West Virginia, Pennsylvania, Maryland, Virginia, Ohio
Professional Surveyor:
West Virginia
Certified Private Pilot

AFFILIATIONS

PROFESSIONAL: West Virginia Society of Professional Engineers; Member
American Society of Civil Engineers; Member
National Society of Professional Engineers; Member
Former NSPE/PEPP Governor of WV
ACEC/WV; President

CIVIC: University High School Foundation; Charter Member; Current
President
Morgantown Area Chamber of Commerce; Past Chairman
Arts Monongalia Board; Member
Monongalia County MPO Technical Advisory Committee;
Member
Morgantown Area Economic Partnership; Member
University High School Athletic Booster; Member
Aircraft Owners and Pilots Association (AOPA)
University High School Athletic Field Committee



SUMMARY

Mr. Davison is the Vice President of Alpha Associates, Inc. Mr. Davison joined the firm in November of 1977. He became a principal of the firm and Vice President in 1980. He has designed numerous structures, including research facilities, post offices, religious facilities, commercial and office buildings, and educational and medical facilities. The West Virginia Society of Architects has recognized Mr. Davison for his excellence in architecture with design awards for the Engineering Research Building at West Virginia University in Morgantown, WV, Wheeling College Chapel in Wheeling, WV, Morgantown High School Addition in Morgantown, WV and the KCAD Professional Office Building located in Martinsburg, WV.

PROFILE

Broad-based responsibilities in the following areas:

- Educational Architecture
- Medical Architecture
- Religious Architecture
- Quality Control
- Client Development
- New Business Development

PROFESSIONAL HIGHLIGHTS

Higher Educational Facilities:

- Agricultural Sciences Building Addition, West Virginia University; Morgantown, WV
- Prichard Hall Renovation, Fairmont State University; Fairmont, WV
- Engineering Science Building, East Wing Addition; Morgantown, WV
- Engineering Research Building; Morgantown, WV
- National Research Center for Coal and Energy, West Virginia University; Morgantown, WV
- Student Leader Housing, West Virginia University; Morgantown, WV
- Galli Laboratory, West Virginia University; Morgantown, WV

K-12 Educational Facilities:

- Washington High School, Charles Town, WV
- Westside High School; Clearfork, WV
- Wyoming East High School; New Richmond, WV
- Lewis County High School; Weston, WV
- Morgantown High School Addition/Renovation; Morgantown, WV
- Ridgedale Elementary School Addition; Morgantown, WV

Medical Facilities:

- Ruby Memorial Hospital Emergency Addition; Morgantown, WV
- Sundale Nursing Home Renovation/Addition; Morgantown, WV



Miscellaneous Architectural Design:

- Upshur County Senior Opportunity Center; Buckhannon, WV
- West Virginia Medal of Honor Recipients Memorial Plaza; Hazelton, WV
- Cumberland Valley Railroad Depot (KCAD Properties Professional Office); Martinsburg, WV
- Ronald McDonald House; Morgantown, WV
- Jenkins Ford; Buckhannon, WV

EMPLOYMENT HISTORY

PRIVATE INDUSTRY:	1977 - Current	Alpha Associates, Incorporated
	1976 - 1977	Carl G. Baker, Architects
	1974 - 1976	Architectural Firm of Laurie and Green
	1966 - 1974	Michael S. Molnar Associates

EDUCATION

UNDERGRADUATE:	Pennsylvania State University Bachelor of Architecture; 1973
-----------------------	---

QUALIFICATIONS

LICENSE:	Registered Architect: West Virginia, Pennsylvania, Maryland, Virginia, Ohio NCARB Certified
-----------------	---

AFFILIATIONS

PROFESSIONAL:	American Institute of Architects West Virginia Society of Architects Council of Educational Facility Planners International American Arbitration Association Interfaith Forum on Religion, Art and Architecture
----------------------	---

CIVIC:	Main Street Morgantown
---------------	------------------------

AWARDS

DESIGN AWARDS:	West Virginia Society of Architects Design Awards: KCAD Professional Office Building Morgantown High School Engineering Research Building Wheeling College Chapel
-----------------------	---



SUMMARY

Mr. Breakey has gained experience through working as a Project Manager on major capital construction projects throughout West Virginia. As a key player in the Open End Contract with West Virginia University, Mr. Breakey deals with projects from schematic design to project close out.

PROFILE

Broad-based responsibilities in the following areas:

- Architectural Design
- Construction Administration
- Contract Negotiations

PROFESSIONAL HIGHLIGHTS

PROJECT MANAGER:

Higher Education Projects:

- WVU Engineering East Wing Renovation/Addition; Morgantown, WV
- ~~WVU Engineering Sciences Building 10th Floor Renovation; Morgantown, WV~~
- ~~WVU Engineering Science Building Nano/Microtechnology Lab; Morgantown, WV~~
- ~~WVU Alfred F. Galli Laboratory Renovations; Morgantown, WV~~

K-12 Education Projects:

- South Jefferson High School, Charles Town, WV
- Pocahontas County High School Science Wing Renovation/Addition; Marlinton, WV
- Buckhannon Upshur Middle School Roof Replacement; Buckhannon, WV
- Buckhannon Upshur Middle School HVAC Upgrades; Buckhannon, WV
- Stanesville Elementary School Addition; Hampshire County, WV
- Petersburg High School Science Lab Renovation; Petersburg, WV

ARCHITECTURAL DESIGN:

- Clear Mountain Bank, Oakland Branch; Oakland, MD
- Fairmont Federal Credit Union, Charles Pointe Branch; Bridgeport, WV
- WVU Engineering Sciences Building East Wing Addition; Morgantown, WV
- Robert C. Byrd Health Sciences Center SRP Lab Renovation; Morgantown, WV
- Upshur County Senior Opportunity Center Renovation and Addition; Buckhannon, WV
- Summersville Municipal Building; Summersville, WV
- Hart Field Air Rescue Fire Fighting Building; Morgantown, WV
- Brucefon Bank, Sabraton Branch; Morgantown, WV
- Camp Dawson Billeting Facilities; Kingwood, WV



MATTHEW S. BREAKEY, AIA
PRINCIPAL
ARCHITECT
mbreaky@alphaaec.com

EMPLOYMENT HISTORY

PRIVATE INDUSTRY: 1998 - Current Alpha Associates, Incorporated
1994 - 1998 West Virginia University Physical Plant
Engineering and Construction
1992 - 1994 West Virginia University Facilities Planning
Management

EDUCATION

UNDERGRADUATE: Pennsylvania State University
Bachelor of Architecture; 1992
Bachelor of Science in Architecture; 1991

QUALIFICATIONS

LICENSE: Registered Architect:
West Virginia
Maryland
NCARB Certified

AFFILIATIONS

PROFESSIONAL: American Institute of Architects
West Virginia Society of Architects
The Council of Educational Facility Planner International

CIVIC: Main Street Morgantown Board of Directors; Member
Main Street Morgantown Design Committee; Chairman
Chestnut Ridge Park Board; President



SUMMARY

Mr. Pritts joined the Alpha Associates staff as an intern architect in the Morgantown office in 2004. In 2008 he became a Registered Architect and received his Leed Certification. Mr. Pritts has become a valuable asset to Alpha Associates. Since arriving at Alpha, he has gained experience in educational design and programmatic development.

PROFILE

Broad-based responsibilities in the following areas:

- Educational Design
- Programmatic Development
- Civic Design
- Commercial Design
- Green Building Design

PROFESSIONAL HIGHLIGHTS

~~ALPHA ASSOCIATES~~

~~Architectural Design:~~

- ~~• Potomac State College, ADA Connector Link; Keyser, WV~~
- ~~• Fairmont Federal Credit Union, Charles Pointe; Bridgeport, WV~~
- ~~• Washington High School; Charles Town, WV~~
- ~~• WVU Engineering Sciences, East Wing Addition; Morgantown, WV~~
- ~~• Ridgeley Community Center; Ridgeley, WV~~
- ~~• Jefferson County Emergency Services Agency; Ranson, WV~~

EMPLOYMENT HISTORY

PRIVATE INDUSTRY:	2004 - Current	Alpha Associates, Incorporated
	2003 - 2004	Marshall Craft Associates, Baltimore, MD

EDUCATION

UNDERGRADUATE:	Virginia Tech Bachelor of Architecture; 2004
-----------------------	---



QUALIFICATIONS

LICENSE/CERTIFICATIONS: Registered Architect:
West Virginia, Maryland
National Council of Architectural Registration Boards Certificate
Leadership in Energy and Environmental Design Accredited
Professional

AFFILIATIONS

PROFESSIONAL: AIA Member
USGBC – US Green Building Council
AUGI – Autodesk User Group International



SUMMARY

As Chief Engineer for site development and planning projects, Mr. Branch is a vital part of the design process at Alpha. His involvement spans from strictly civil engineering projects, to the design of large scale educational projects and medical facilities. Mr. Branch acts as peer review for young engineers in the firm on issues ranging from storm water management to site design. Mr. Branch is also involved in commercial and residential development design, roadway and bridge design and utilities layout.

PROFILE

Broad-based responsibilities in the following areas:

- Highway Design
- Municipal Engineering
- Wastewater Collection
- Storm Sewer/Storm Water Management Design
- Site Engineering
- Project Management

PROFESSIONAL HIGHLIGHTS

Highway Design:

- Blackshere Bridge - Mannington, WV
- I-68 Welcome Center - Hazelton, WV
- I-77 Information Center - Williamstown, WV
- Lewis County High School Bridge - Weston, WV
- Wyoming County Route 10 Relocation - Wyoming County, WV

Commercial Site Plans:

- West Virginia High Technology Consortium - Fairmont, WV
- Doan Ford - Belmont, OH
- WVU Health Sciences Center Eastern Division - Martinsburg, WV
- Residence Inn - Morgantown, WV
- FFCU - Charles Pointe - Bridgeport, WV

Recreational Facilities Projects:

- Wyoming County Westside High School Athletic Facilities - Wyoming County, WV
- East/West Stadium Turf Replacement - Fairmont, WV
- Washington High School Athletic Complex - Charles Town, WV

Educational Projects:

- Anna Jarvis Elementary School - Grafton, WV
- Lewis County High School - Weston, WV
- Wyoming County East High School - Wyoming County, WV
- Wyoming County Westside High School - Wyoming County, WV
- Washington High School - Charles Town, WV



SUMMARY

Mr. Luttrell has worked with Alpha Associates, Inc. since 1996. He is the chief structural engineer for Alpha on all projects at Alpha. Before coming to Alpha, Mr. Luttrell's graduate work resulted in several contributions to the cold-formed steel deck industry. His new method of analysis for non-uniform loads on composite concrete and cold-formed steel decks has been made a permanent part of the *Steel Deck Institute's* design manual. Mr. Luttrell also worked on projects that involved pre-stressed timber bridge research with the West Virginia University Constructed Facilities Center. Since coming to Alpha, Mr. Luttrell has had a significant involvement in the effort to begin utilizing modern composite materials in practical bridge applications. Two recent Alpha bridge projects have been designed using these innovative materials.

PROFILE

Broad-based responsibilities in the following areas:

- Bridge Structural Design and Analysis
- Innovative Bridge Materials Applications
- Building Structural Design and Analysis
- Historical Restoration and Evaluations

PROFESSIONAL HIGHLIGHTS

STRUCTURAL ENGINEER:

- Hazel Ruby McQuain Amphitheater Roof, Morgantown, WV
- West Buckeye Bridge, Core, WV
- South Jefferson High School, Charles Town, WV
- WVU Coliseum Asbestos Abatement Project (Scaffolding Design and Dome Structural Inspection); Morgantown, WV
- Morgantown Airport Air Rescue and Firefighting Building; Morgantown, WV
- WVU Coliseum Scoreboard Hoist Project; Morgantown, WV

PROJECT MANAGER:

Bridge Design:

- Blackshere Bridge; Mannington, WV
- South High Street Bridge; Morgantown, WV
- Market Street Bridge; Wheeling, WV
- West Buckeye Bridge; Core, WV
- Simpson Creek Covered Bridge; Marion County, WV
- Fletcher Covered Bridge; Marion County, WV
- Elkins Bypass, Spur A Bridge; Elkins, WV



CHARLES B. LUTTRELL, PE
PRINCIPAL
PROFESSIONAL ENGINEER -
STRUCTURES
cluttrell@alphaaec.com

EMPLOYMENT HISTORY

PRIVATE INDUSTRY: 1996 - Current Alpha Associates, Incorporated
1995 - 1996 Larry D. Luttrell, PE, Ph D
1991 - 1994 West Virginia University
1990 - 1991 WVU Constructed Facilities Center

EDUCATION

GRADUATE: West Virginia University
MS - Structural Engineering; 1995

UNDERGRADUATE: West Virginia University
BS - Civil Engineering; 1993

QUALIFICATIONS

LICENSE: Professional Engineer:
West Virginia, Maryland

AFFILIATIONS

PROFESSIONAL: West Virginia Society of Professional Engineers
National Society of Professional Engineers
Chi Epsilon; Member
American Concrete Institute; Member
Structural Engineering Certification Board

RESEARCH EXPERIENCE

STRUCTURAL: Cold Formed Steel Deck Research

- Fastener failures
- Edge conditions/failures
- Buttoned overlap shear failures

Composite Cold Formed Steel and Concrete Deck Research

- Line load behavior/failures
- Concentrated load behavior/failures
- Web crippling
- Punch failures



SUMMARY

Ms. Simmons has worked as an Architectural team member and directly with end users. The scope of her work involves a wide range of interior design and includes corporate, educational, churches, hospitals, dental and health care projects. The scope of Ms. Simmons' services includes input at the Schematic Design Phase (Plan Layout) as well as selection of colors, finishes, furniture, and design of custom built-in casework. She can also coordinate purchase and installation of furnishings and accessories

PROFILE

Broad-based responsibilities in the following areas:

- Interior Design
- Interior Space Planning

PROFESSIONAL HIGHLIGHTS

ALPHA ASSOCIATES

Educational Facilities:

- Lewis County High School
- Aurora Elementary
- Morgantown High School
- Anna Jarvis Elementary
- WVU Student Leader Housing
- Grafton High School
- Buchannon-Upshur Middle School
-

Commercial Facilities:

- Clear Mountain Bank - Multiple Branches
- BC Bank
- Fairmont Federal Credit Union

Medical Facilities:

- Health Sciences Center Family Practice
- Physicians Office Center - Multiple Projects
- Health Sciences Center Central Administrative Department
- Health Sciences Center School of Medicine
- Health Sciences Center School of Pharmacy
- WVU - Eastern Division



Miscellaneous Architectural Design:

- Wassick Novelty Company
- Hart Field Terminal
- Preston County Sheltered Workshop
- Summersville Municipal Building
- Morgantown Dental Group
- Avery United Methodist Church

EMPLOYMENT HISTORY

PRIVATE INDUSTRY:	1994 - Current	Alpha Associates, Incorporated
	1991-1994	Keystate, Incorporated
	1989-1991	Herman Miller

EDUCATION

UNDERGRADUATE: Florida State University
Bachelor of Interior Design; 1989



SUMMARY

Mr. McClung comes to Alpha Associates, Inc. after spending ten years in public service. He was formerly the Marion County Planner and his most recent position was Assistant Planner for the City of Fairmont. During his tenure in municipal government Mr. McClung has worked on grant writing and administration, comprehensive planning and code enforcement. Prior to working in municipal government Mr. McClung worked in the field of historic preservation as a delineator for the Eberly College of Arts and Sciences Institute for the History of Technology and Industrial Archaeology at WVU.

PROFILE

Training and expertise in the following areas:

- Landscape Design
- Historic Landscape Preservation
- Delineation to HABS/HAER Standards
- Grant Writing
- Grant Administration
- Zoning Administration
- Comprehensive Planning
- Wetland Delineation

PROFESSIONAL HIGHLIGHTS

Delineator:

- Supervised field teams and office staff delineating historic industrial sites, processes, and structures to the Secretary of the Interior's Standards for Historic American Building Survey/Historic American Engineering Record.
- Supervised field team for the study and preservation of historic landscapes as a supplement to the Nomination of the Skyline Drive to the National Register of Historic Places.

Zoning Administrator:

- Collaborated with the City Planner, City Attorney, and City Planning Commission to draft and facilitate the adoption of a substantive amendment to the City of Fairmont Zoning Code.
- Collaborated with City Planner and Planning Commission of the substantive amendment of the City of Fairmont Zoning Map.
- Provide staff reports and technical assistance to the Fairmont Board of Zoning Appeals on Variance and Appeals hearings.
- Provide zoning assistance to builders, and general public on a daily basis.



Planner:

- Collaborated with the City Planner, and Planning Commission to draft and facilitate the adoption of the ten year update of the City of Fairmont Comprehensive Plan.
- Written applications, and administered Small Cities Block Grant, Department of Justice Grant, Governors Community Partnership, and Local Economic Development Assistance Grant, Transportation Enhancement, and Recreational Trail Grants

Landscape Designer:

- Designed the planting plan for the Alumni Drive Parking Lot in Morgantown WV.
- Developed site design including planting plan for the Clear Mountain Bank in Reedsville, WV.
- Designed planting plan for Monongalia General Hospital Medical Office Building parking lot in Morgantown, WV.
- Assisted with wetland delineation for Lamberts Run Passive Acid Mine Drainage Treatment System in Harrison County, WV.
- Assisted with wetland delineation for Morgantown Municipal Airport Access Road Project in Morgantown, WV.
- Assisted with pedestrian circulation study for three locations at West Virginia University in Morgantown, WV.
- Collaborated on planting plan of West Virginia University Evansdale Campus Improvement Project in Morgantown, WV.

EMPLOYMENT HISTORY

PRIVATE INDUSTRY:

2008	Alpha Associates, Incorporated
2002-2008	City of Fairmont
1997-2002	Marion County Commission
1990-1997	IHTIA Eberly College of Arts and Sciences WVU
1998-1989	Landscapes Unlimited

EDUCATION

UNDERGRADUATE:

West Virginia University
 BS - Landscape Architecture; 1991

AFFILIATIONS

CIVIC:

Habitat for Humanity, Marion County Affiliate
 Board Vice President



PROJECT: NEW FIBER PROCESSING FACILITY
OWNER: FMW COMPOSITE SYSTEMS, Hazleton, WV



MEP TECHNICAL HIGHLIGHTS:

Total Project Budget:
95.8M

MEP Budget:
51.4M

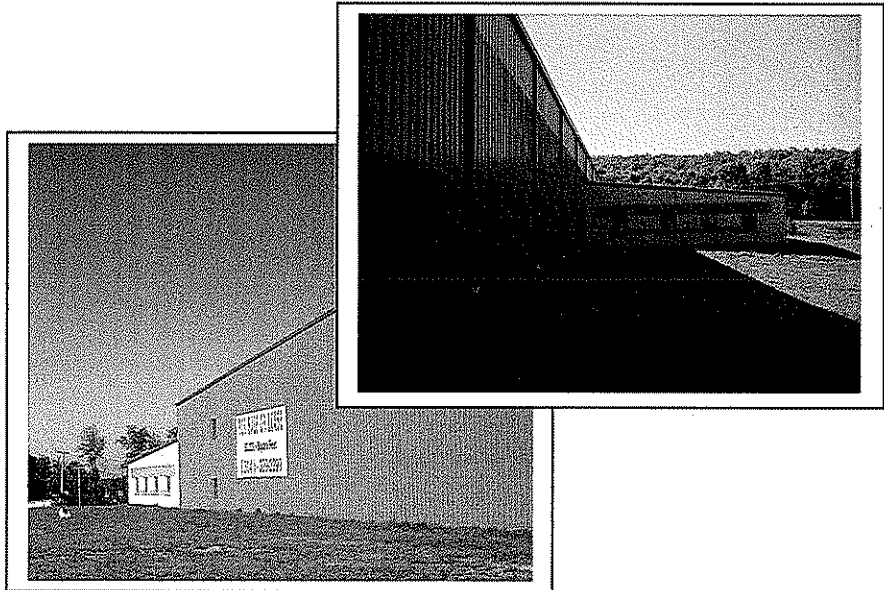
Facility Area:
15,000 ft²

Services Provided:
*Facility and Site
Mechanical, Electrical,
Plumbing, Fire
Protection*

Project Status:
Contract Awarded

Project Completion
Date:
August 2009

The facility's production process utilizes explosive Hydrogen and Propane requiring Electrical, HVAC, and Plumbing systems to be explosion proof. The project required extensive review of air movement (supply, exhaust, room-to room) within and outside the facility. The processes also use chemicals which can emit vaporous Hydrochloric Acid, requiring emergency ventilation systems. An extensive code review process was performed as well as design of a foam based fire suppression system. Process gasses flow from exterior bulk storage to the process equipment through a piping network. Significantly complexity was added as the roof structure could not support any HVAC equipment and location, footprint, and services were already established during building of the shell.



PROJECT DESCRIPTION:

The project involved incorporating a high technology production facility into a pre-fab metal building in an industrial park. The 18,000 ft² Fiber Processing Facility will house production equipment for reinforced carbon fiber. Used heavily in the aerospace and aircraft industries for its strength and light weight, carbon fiber production requires complex space conditions. The Facility also houses quality control, shipping, and a future 4000 ft² corporate office. The housing of such diverse functions in one facility required condensing boilers, multiple air systems, a chiller, and building pressurization functions to protect adjacent occupants. Emergency exhaust and spill containment systems were designed to enhance worker safety and satisfy environmental concerns.

REFERENCE:

Rob Grabow, FMW Composite Systems
1200 West Benedum Industrial Drive
Bridgeport, West Virginia 26330
304-842-1970

PROJECT: THE AUGUSTA PROJECT

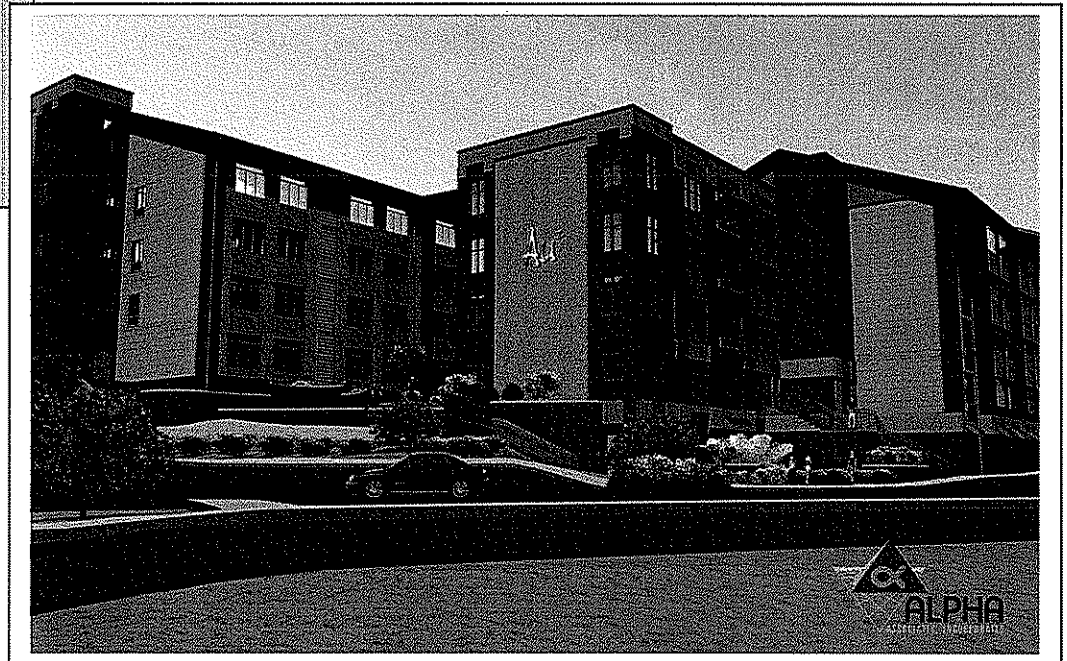
OWNER: McCoy 6, Morgantown, WV



MEP TECHNICAL HIGHLIGHTS:

Total Project Budget	\$10M
MEP Budget	\$3.5M
Facility Area	150,852 ft ²
Services Provided:	Facility and Site Mechanical, Electrical, Plumbing, Fire Protection, Fire Alarm
Project Status	Complete
Project Completion Date	August 2007

The 150,000 ft² facility incorporates modular construction which presented many design challenges. The HVAC systems are independent to each unit and had to be accomplished in a minimum footprint within each apartment. An underground parking garage added to the mechanical and fire protection complexity. The Fire protections systems presented a unique challenge as the apartment systems were installed at the modular factory and had to coordinate with the hallway header piping on site. The fire protection system incorporates both wet and dry systems. The building water, electric, and tel/dat/cable utilities each required special attention and coordination with the service providers. The construction has proceeded as designed with only minor issues for resolution.



Rendering Courtesy of ALPHA

PROJECT DESCRIPTION:

The Augusta Project is a 157 unit, 293 bed apartment complex located proximate to the WVU downtown campus. The urban inspired apartments are configured for maximum efficiency and use of space. The facility boasts underground parking, several social areas, centralized security systems, and limited retail area.

REFERENCE:

Richard Colebank PE, Alpha Associates
209 Prairie Ave.
Morgantown, West Virginia 26505
304-296-8216

PROJECT: WVU CRRB 7TH FLOOR SHELL FIT OUT
OWNER: WEST VIRGINIA UNIVERSITY, MORGANTOWN, WV



MEP TECHNICAL HIGHLIGHTS:

Total Project Budget:
\$470K

MEP Budget:
\$105K

Facility Area:
5,700 SF

Services Provided:
Mechanical, Electrical,
Plumbing, Fire
Protection

Project Status:
Complete

Project Completion
Date:
March 2005

The Project required the installation of a new HVAC system to serve the 7th top floor fit out of shell space from the original construction. A new air system was installed in the rooftop penthouse incorporating a rooftop condenser, hot water system evaluation, and re-piping the existing building hot water system for additional heating. Electrical and plumbing systems were developed to support the retrofit. The air system incorporates enthalpy-based outside air economizer and CO₂ control of ventilation for increased energy efficiency. The ductwork design was complicated by only two structurally possible air handling unit locations.



Photo Courtesy of ALPHA Associates

PROJECT DESCRIPTION:

The retrofit of approximately 5700 ft² of previous storage space into usable office/ conference space was successfully achieved. The Owner wanted a "warehouse look" utilizing exposed overhead mechanical. The MEP systems had to be aesthetically and architecturally appropriate while working around existing building systems such as existing roof drain leaders within the space. The existing systems were to be reused as much as possible to help control project costs. A full restroom and kitchen area was developed to meet the needs of the occupants. Extensive detailing of system components and aggressive Construction Administration resulted in a highly successful project.

REFERENCE:

Bob Merow, WVU Facilities Management, PDC
979 Rawley Lane
Morgantown, West Virginia 26506
304-293-2875

PROJECT: Willowdale Road Walkway Lighting

OWNER: West Virginia University, Morgantown, WV



MEP TECHNICAL HIGHLIGHTS:

Total Project Budget:

\$185k

MEP Budget:

\$185k

Facility Area:

NA

Services Provided:

Lighting and Electrical

Project Status:

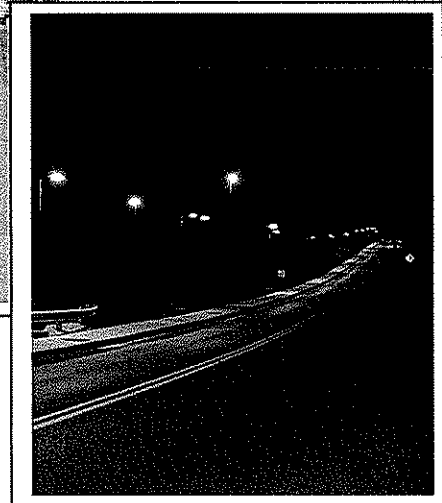
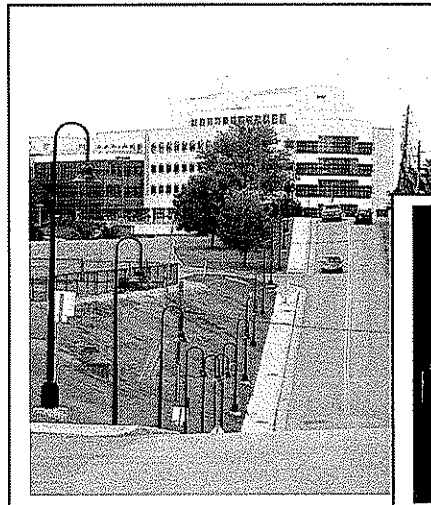
Complete

Project Completion

Date:

August 2007

MEI was requested to design the lighting and associated power systems to light the walkway extending down Willowdale Road adjacent to the WVU Stadium and Hospital parking areas. The project revolved around providing maximum lighting for student safety without creating a blinding hazard for drivers or light pollution for the housing on the opposite side of the road. Additionally, the grade changes significantly, which could have increased the blinding effect on drivers. Extensive computer modeling was performed and the lighting levels slightly exceed the Owner's requirements. A variation of the University standard fixture was used which provided the same "look" during the day, but an effective safety lighting system as night.



PROJECT DESCRIPTION:

The project was implemented at the request of the University Student Government in response to concerns for student safety in the area. Both the vehicular and pedestrian traffic has increased in the area in recent years, increasing the likelihood of an incident or accident. The lighting system design has resulted in a safer environment for both drivers and pedestrians and a significant increase in the number of people using the area for recreational walking has been reported.



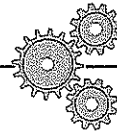
B. CRAIG MILLER, PE
PRESIDENT
ENGINEER IN RESPONSIBLE CHARGE

EDUCATION Bachelor of Science in Mechanical Engineering,
West Virginia University - 1995
Bachelor of Arts in Mass Communication,
University of Charleston (WV) - 1988

REGISTRATIONS Professional Engineer, West Virginia
Professional Engineer, Pennsylvania
Professional Engineer, Maryland

QUALIFICATIONS Craig has more than 10 years' experience in the design, specification, and construction/ project management of mechanical, electrical, and plumbing systems and 10 years experience in facilities operations, maintenance, and management. He specializes in retrofits and upgrades to existing systems and what he terms "operational engineering" or implementing changes to, while maintaining the operational requirements of, a facility or system. He has worked extensively in the educational/ institutional environment including spending several years as a systems mechanic performing various trades work prior to obtaining his engineering education. His trades work gives him a distinctive "hands on" approach to engineering application and design.

Prior to founding MEI, Craig worked as a staff engineer for Casto Technical Service (Trane) performing engineering evaluation and design on various mechanical system upgrades including: Marion County Courthouse, Davis & Elkins Student Union, Charleston Area Medical Center, Women's and Children's Hospital, and Wetzel County Hospital. Preceding his time with Casto Technical, Craig spent two years at Uniontown Hospital as Assistant Director of Engineering. He managed the day-to-day operations of maintenance personnel, managed projects and performed operational engineering service to the facility mechanical, electrical, and plumbing systems. His principal operational engineering foci were the hospitals' steam, chilled water, air handling infrastructure and their associated control systems. He managed real-time upgrade projects to the hospital facilities and the full



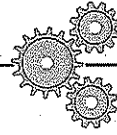
MILLER

ENGINEERING, INC.

accreditation review of hospital systems operation and maintenance.

Craig worked as a staff engineer at West Virginia University Physical Plant for six years. During that time he managed multiple facility and infrastructure upgrade projects, performed engineering design, assisted maintenance personnel with operational issues, and managed the University's Energy Program. Additionally, he served as the Owner's design review engineer on approximately \$130 million in new capital construction. Craig's WVU projects included mechanical, electrical, plumbing, infrastructure, control, and energy systems repair and maintenance totaling approximately \$20 million.

Prior to his position at WVU, Craig worked in operations and facility maintenance for the Morgantown Board of Parks and Recreation while attending the WVU School of Engineering. He performed mechanical and electrical systems maintenance duties and associated engineering design work while helping to maintain and upgrade the park systems' facilities. Craig started his mechanical systems career as an apprentice and then as a maintenance systems mechanic in the Physical Plant at the University of Charleston.



MILLER

ENGINEERING, INC.

CHUCK LEMLEY, PE
SENIOR STAFF ENGINEER

EDUCATION

Bachelor of Science in Electrical Engineering,
West Virginia University - 1989

REGISTRATIONS

Professional Engineer, West Virginia
Professional Engineer, Pennsylvania
Professional Engineer, District of Columbia

QUALIFICATIONS

Chuck has worked for MEI on a part time basis on several projects over the last few years and is in transition to a full time position as a senior staff engineer.

Chuck has 20 years experience in the electrical industry with much of that time spent as a distribution and customer service engineer for a local utility. His great experience in high voltage distribution systems including substations, scada systems, and lines distribution systems design make him one of the best power systems designers in the region. The time Chuck has spent working with major account customers has given him a vast and detailed understanding of the needs of commercial and industrial clients in regards to power systems and electrical distribution. While implementing construction projects for power company customers, he learned the "nuts and bolts" of power systems construction. During his tenure with a local electrical contractor, he also refined his skills relating to low voltage (600V & below) power distribution systems and related construction requirements and practices.

Chuck brings an operational knowledge to his design work which results in a reliable, cost effective result for the client.

BRANDON MERRIMAN FE
MECHANICAL DESIGNER

EDUCATION

Bachelor of Science in Mechanical Engineering
West Virginia University – May 2006

QUALIFICATIONS

Brandon is a graduate of the West Virginia University College of Engineering. Brandon assisted in the design and construction administration of multiple projects as an Engineering Intern during the summer of 2005 and his senior year at WVU. His work has proven invaluable and he possesses a keen ability to grasp and apply new information.

Brandon has come to MEI with an excellent academic record and a willingness to learn that seen him grow to be a highly valuable member of our team in a short period of time. His experience in the Engineering Projects with Industry while at WVU significantly increased his professional experience. Brandon's long term goal is to obtain his Professional Engineer's license and continue consulting.

REGISTRATIONS

Fundamentals of Engineering, West Virginias PE Board – April 2006

HARRY S. TRUMAN FEDERAL BUILDING



Project Description:

P|C|S is providing cost estimating services to Westlake Reed Leskosky on an as needed basis for the renovations of 250,000 square feet spanning 8 floors of the Harry S. Truman Building. The total cost of this project is approximately \$85.75 Million.

Project Information:

Location:

Washington, DC

Construction Cost:

\$85.75 Million (approximate)

Square Footage:

250,000

Owner:

Harry S. Truman Federal Building
2201 C Street NW
Washington, DC

Architect:

Mr. Jason Adolff
Westlake, Reed, Leskosky
1850 M Street NW, Suite 1095
Washington, DC 20036
(202) 296-4344

H.M. METZENBAUM FEDERAL U.S. COURTHOUSE



Project Description:

P|C|S provided cost estimating services for the interior renovations of the existing Howard M. Metzenbaum Federal U.S. Courthouse. P|C|S completed several cost estimates including the buildings new HVAC systems.

Project Information:

Location:

Cleveland, Ohio

Construction Cost:

N/A

Square Footage:

235,000

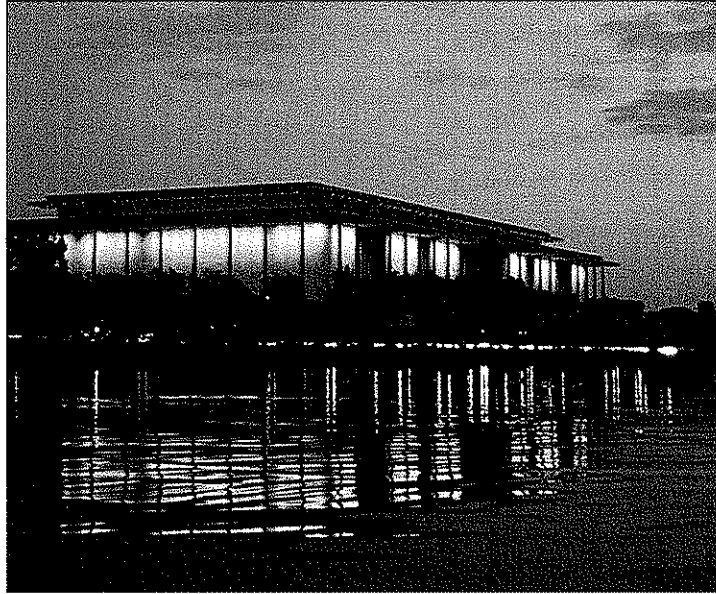
Owner:

Howard M. Metzenbaum Federal U.S.
Courthouse
201 Superior Avenue
Cleveland, Ohio 44114

Architect:

Mr. Paul Westlake
Westlake, Reed, Leskosky
925 Euclid Avenue, Suite 1900
Cleveland, Ohio 44115
(216) 522-1350

KENNEDY CENTER FOR THE PERFORMING ARTS COMPREHENSIVE BUILDING



Project Description:

P|C|S is providing cost estimating services to Westlake Reed Leskosky on an as needed basis for this Capital Improvement Project.

Project Information:

Location:

Washington, DC

Project Cost:

\$104 Million

Square Footage:

1.5 Million

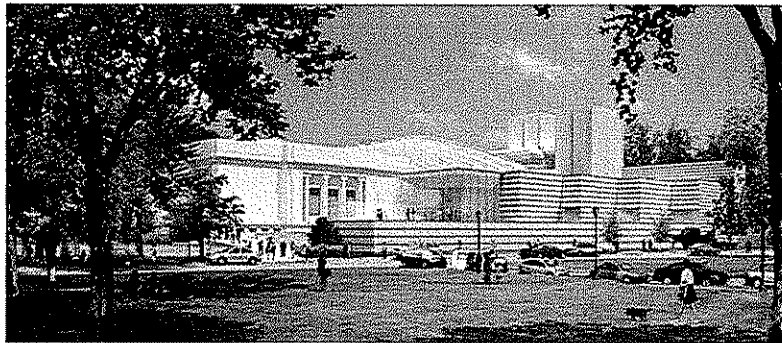
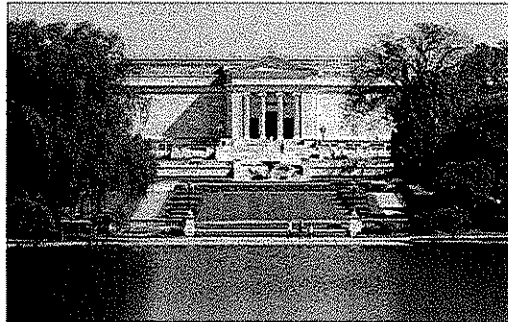
Owner:

Kennedy Center for the Performing Arts
2700 F Street NW
Washington, DC 20566

Architect:

Mr. Jason Adolff
Westlake, Reed, Leskosky
1850 M Street NW, Suite 1095
Washington, DC 20036
(202) 296-4344

THE CLEVELAND MUSEUM OF ART



Project Description:

Project and Construction Services, Inc. provided cost estimating services on the Cleveland Museum of Art project. This project included new building construction and additions/renovations of existing buildings, including art galleries, theatres, classrooms, recording studios, and general office spaces. The 1916 Beaux-Arts building and the 1971 Breuer building will be completely renovated. Renovations and repairs comprise two-thirds of this construction project. Additionally, there are two building additions, an east wing and a west wing. A great piazza with a towering glass canopy will be at the center of the structure. PCS completed design phase services for this project in 2005. Construction is scheduled for completion in 2011.

Project Information:

Location:

Cleveland, Ohio

Project Cost:

\$248 Million

Square Footage:

801,799

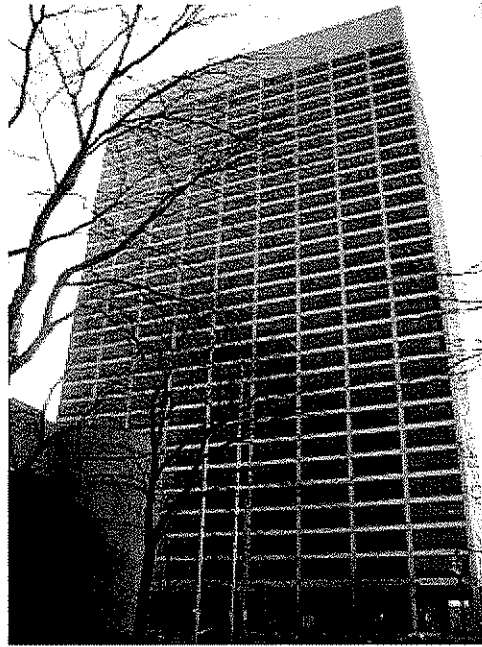
Owner:

The Cleveland Museum of Art
11150 East Boulevard
Cleveland, Ohio 44106-1797
(216) 421-7340

Architect:

Ms. Amy Coe
Project Manager
Rafael Viñoly Architects
50 Vandam Street
New York, NY 10013
(212) 924-5060

ANTHONY J. CELEBREZZE FEDERAL BUILDING



Project Description:

Project and Construction Services, Inc. is providing cost estimating services for the interior renovations of the existing Anthony J. Celebrezze Federal Building multi-phased renovation project. This building totals 1,007,000 square feet and reaches an impressive 32 stories. PCS has worked on every floor of this building on numerous projects, including the fire alarm replacement, HVAC upgrades, 4,600 fan coil replacements, and the exterior plaza upgrades.

PCS provides cost estimating services at this site for multiple architects some of whom are not listed on this profile.

Project Information:

Location:

Cleveland, Ohio

Construction Cost:

\$50 Million (approximate)

Square Footage:

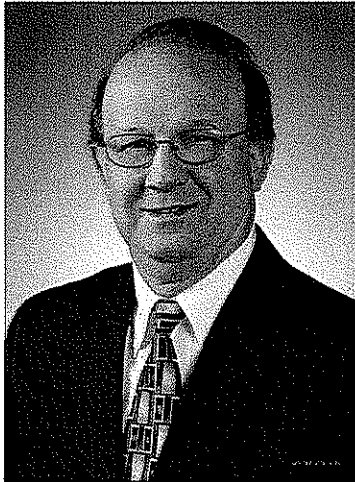
1,007,000

Owner:

A.J. Celebrezze Federal Building
1240 East 9th Street
Cleveland, Ohio 44199

Architect:

Mr. Paul Westlake
Westlake, Reed, Leskosky
925 Euclid Avenue, Suite 1900
Cleveland, Ohio 44115
(216) 522-1350



KEVIN LAWLOR

Executive Vice President &
Principal-in-Charge of Estimating

Kevin is Principal-in-Charge of all in-house estimating and systems support services. Additionally, he directs the coordination and preparation for value engineering services, constructability reviews, and adherence to contract documents on these elements. He brings over 34 years of design and construction phase experience to each project. During this period, he has provided cost estimates on over \$10 Billion of multi-use facility projects. Kevin has participated in numerous Value Engineering (VE) sessions, and has completed the 40-hour VE workshop that is a pre-requisite to becoming a certified Value Specialist.

Selected Project Experience

Education

Bowling Green State University

Associations

American Society of Heating,
Refrigerating, and Air
Conditioning Engineers, Inc.
(ASHRAE)
American Society for Healthcare
Engineering (ASHE)
Construction Management
Association of America
(CMAA)
American Society of Professional
Estimators (ASPE)

Government / Public Sector

- City of Avon Lake, Avon Lake, OH
- City of Bay Village, Bay Village, OH
- City of Bedford, Bedford, OH
- City of Lyndhurst, Lyndhurst, OH
- City of Parma, Justice Center, Parma, OH
- GCRTA (Greater Cleveland Regional Transit Authority), Cleveland, OH
- Celebrezze Federal Building, Cleveland, OH
- Howard M. Metzenbaum Federal Building, Cleveland, OH
- Harry S. Truman Federal Bldg. Washington D.C.
- Russell Township Fire Station, Russell Township, OH

Education

- Akron University, Student Union, Akron, OH
- Bay Village City Schools, Bay Village, OH
- Bowling Green University, Huron, OH
- Case Western Reserve University, Cleveland, OH
- Cleveland State University, Cleveland, OH
- Columbus State Community College, Columbus, OH
- Hudson Local Schools, Hudson, OH
- John Carroll University, Cleveland, OH
- Kent State University, Kent, OH
- Marshall County Schools, Moundsville, WV
- Ohio State University, Columbus, OH
- Ashtabula Area City Schools, Ashtabula, OH
- Barnesville Exempted Village Schools, Barnesville, OH
- Bellaire Local Schools, Bellaire, OH
- Cambridge City Schools, Cambridge, OH
- East Muskingum Local Schools, New Concord, OH
- Martins Ferry City Schools, Martins Ferry, OH
- Morgan Local School Schools, McConnellsville, OH
- Steubenville City Schools, Steubenville, OH
- West Muskingum Local Schools, Zanesville, OH
- Rocky River City Schools, Rocky River, OH
- TRI-C, Student Library, Cleveland, OH
- University of Cincinnati, Cincinnati, OH

- Ursuline College, Pepper Pike, OH
- West Geauga Schools, Chesterland, OH
- West Geauga Transportation Facility (Serving WGSchools), Chesterland, OH
- West Virginia University, Morgantown, WV
- Wood County Schools, Parkersburg, WV

Healthcare

- Akron General Medical Center, Akron, OH
- Barberton Citizens Hospital, Barberton, OH
- Cleveland Site Center, Cleveland, OH
- Fairview Hospital, Cleveland, OH
- Geauga Regional Hospital, Chardon, OH
- Lake Hospital Systems, Mentor, OH
- Medina Hospital, Medina, OH
- MetroHealth System, Cleveland, OH
- Ohio State University Medical Center, Columbus, OH
- Parma Hospital, Parma, OH
- Cleveland Clinic Foundation, Cleveland, OH
- Wade Park VA Hospital, Cleveland, OH

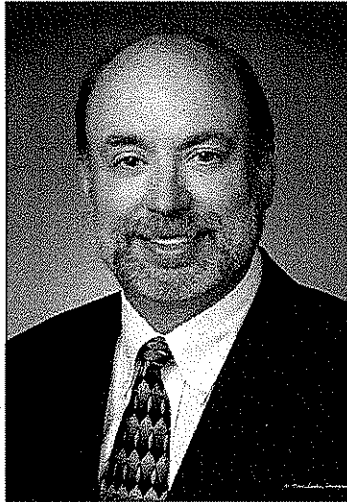
Commercial

- Applied Industrial Technologies, Cleveland, OH
- Aurora Community Center, Aurora, OH
- BP Headquarters Building, Cleveland, OH
- Dominion East Ohio, Cleveland, OH
- Hanna Theatre, Cleveland, OH
- Higbee Building, Cleveland, OH
- Key Tower & Parking Garage, Cleveland, OH
- The Ohio Theatre, Toledo, OH
- Tower City Center, Cleveland, OH
- Westlake Recreation Center, Westlake, OH
- WVIZ, Ideastream, Cleveland, OH

Institutional

- Cleveland Museum of Art, Cleveland, OH
- Mentor Library, Mentor, OH
- Morley Library, Painesville, OH





LEW HEIFNER

Lead Estimator

As Lead Estimator at P|C|S, Lew provides in-house estimating support for all disciplines including architectural, structural, civil, mechanical, plumbing, and electrical systems. He has been providing construction estimates for over 28 years. Primarily having worked on estimating for both design-build projects and hard bid projects, Lew has provided services for project documentation, bid documentation preparation, and bid solicitation.

Selected Project Experience

Government / Public Sector

- Celebrezze Federal Building Renovations, Cleveland, OH
- American Electric Power Tornado Proof Buildings, Shreveport, LA
- American Electric Power Tornado Proof Buildings, Corpus Christi, TX
- RTA (Greater Cleveland Regional Transit Authority), Cleveland, OH
- National City Bank Call Center, Upper Sinclair, PA
- WPXI New Studio, Pittsburgh, PA
- WQED Studio Renovation, Pittsburgh, PA
- North Canton Army Reserve Center, North Canton, OH
- US Customs Service, Advanced Training Center, Harpers Ferry, WV
- Constitution Center, Philadelphia, PA
- Seattle Courthouse, Seattle, WA
- Federal Campus, Oklahoma City, OK
- Pentagon Renovations, Washington, DC
- Prettyman US Courthouse, Washington, DC
- Federal Building, Fresno, CA
- George Bush Airport FIS Building, Houston, TX
- Jacksonville Federal Courthouse, Jacksonville, FL
- USARC/OMS/AMSA Training Center, Oakdale, PA
- New Domestic Terminal, JFK International Airport, Long Island, NY
- FDOT Turkey Lake Law Enforcement & Maintenance Facility, Orlando, FL

- Ohio College of Podiatric Medicine, Cleveland, OH
- Clarion University Dorm, Clarion, PA
- Marshall County Schools, Marshall County, WV
- West Virginia University, Morgantown, WV
- West Virginia University Fire Training Academy, Morgantown, WV
- Morgan State University, Baltimore, MD
- Chapel & Performing Arts Center, Northwestern College, Orange County, IA
- Muskingum College, New Concord, OH
- ITT, Dublin, OH

Institutional

- Ohr Shalom Synagogue, San Diego, CA
- North Branch Correction Institution, Cumberland, MD
- Mercer County Jail, Mercer, PA
- St. Paul Homes, Assisted Care Living Facility, Greenville, PA

Healthcare

- Fairview Hospital, Cleveland, OH
- Shamokin Area Community Hospital, Coal Township, PA
- Salem Community Hospital, Surgery Expansion, Salem, OH
- Mercy Medical Center, Canton, OH
- Ohio State University Medical Center, Columbus, OH
- St. Clair's Hospital, Upper St. Clair, PA
- Wade Park VA Hospital, Cleveland, OH

Education

- Ohio State University, Columbus, OH
- Wood County Schools, Parkersburg, WV
- Steubenville City Schools, Steubenville, OH
- St. Ignatius High School, Cleveland, OH
- Martins Ferry City SD, Martins Ferry, OH

Education

B.S. Construction Engineering Technology, Pittsburg State University, Pittsburg, KS

Associations

American Society of Professional Estimators (ASPE)
Associated General Contractors
American Institute of Design and Drafting
Epsilon Pi Tau, Industrial Arts
Honorary Fraternity
Sigma Lambda Chi, Construction Technology Honorary Fraternity





TOM KAUKER

Lead Estimator

As Lead Estimator at P|C|S, Tom is responsible for the preparation of estimates for all architectural, civil, structural, and sitework elements for each project. During Tom's 40-year career, he has estimated over \$10 Billion of construction projects. In addition to his vast experience, Tom completed the 40-hour Value Engineering Workshop, which is a pre-requisite to becoming a Value Specialist. Tom is also a founder of P|C|S.

Selected Project Experience

Education

BS, Civil Engineering
University of Detroit

Associations

American Society of Professional
Estimators (ASPE)

Education

- Akron University, Student Union, Akron, OH
- Baldwin Wallace College, Berea, OH
- Bowling Green University, Technology Center, Firelands Campus, Huron, OH
- Case Western Reserve Univ., Cleveland, OH
- Cleveland State University, Cleveland, OH
- Columbus State Community College, Academic Center, Columbus, OH
- John Carroll University, Cleveland, OH
- Kent State University, Kent, OH
- Muskingum Area Technical College, Zanesville, OH
- Ohio State University, Columbus, OH
- Penn State University, State College, PA
- TRI-C, Student Library, Cleveland, OH
- University of Cincinnati, Cincinnati, OH
- University of Pitt, Pittsburgh, PA
- Ursuline College, Pepper Pike, OH
- West Virginia University, Morgantown, WV
- Wilmington College, Wilmington, OH
- Oberlin College, Oberlin, OH
- SUNY at Cortland, Cortland, NY

Government / Public Sector

- Allen Correctional Institution, Lima, OH
- Asheville Civic Center, Asheville, NC
- City of Avon Lake, Avon Lake, OH
- City of Bay Village, Bay Village, OH
- City of Bedford, Bedford, OH
- City of Lyndhurst, Lyndhurst, OH
- City of Parma, Justice Center, Parma, OH
- Corning Decker Building, Corning, NY
- Federal Reserve Bank, Cleveland, OH
- Greater Cleveland Regional Transit Authority, Cleveland, OH
- Celebrezze Federal Building, Cleveland, OH
- J.W. Peck Federal Building, Cincinnati, OH
- J.W. Bricker Federal Building, Columbus, OH
- Howard M. Metzenbaum Federal Building, Cleveland, OH
- Potter Stewart Federal Bldg., Cincinnati, OH
- Internal Revenue Service, Brooklyn, NY
- Medina County Jail, Medina, OH
- USPS Pittsburgh, Pittsburgh, PA

Healthcare

- Akron General Medical Center, Akron, OH
- Barberton Citizens Hospital, Barberton, OH
- Bradford Regional Medical Center, Bradford, PA
- Elyria Memorial Hospital, Elyria, OH
- Fairview Hospital, Cleveland, OH
- Geauga Regional Hospital, Chardon, OH
- Lake Hospital Systems, Mentor, OH
- Medina Hospital, Medina, OH
- Memorial Hospital of York, York, PA
- MetroHealth System, Cleveland, OH
- Ohio State University Medical Ctr., Columbus, OH
- Parma Hospital, Parma, OH
- Salem Community Hospital, Salem, OH
- Shamokin Community Area Hospital, Coal Township, PA
- Cleveland Clinic Foundation, Cleveland, OH
- Wade Park VA Hospital, Cleveland, OH

Commercial

- Applied Industrial Technologies, Inc., New Corporate Headquarters, Cleveland, OH
- Aurora Community Center, Aurora, OH
- Bardavan Theatre, Poughkeepsie, NY
- Chapel Hill Mall, Akron, OH
- Clemens Center Stagehouse, Elmira, NY
- Cleveland Convention Center, Cleveland, OH
- Emerald Corporate Park, Cleveland, OH
- Hanna Theatre, Cleveland, OH
- Higbee Building, Cleveland, OH
- Hopkins Airport Skymall, Cleveland, OH
- Key Tower & Parking Garage, Cleveland, OH
- McDonald's Corp., Chicago, IL
- Rock-N-Roll Hall of Fame, Cleveland, OH
- Station Square, Pittsburgh, PA
- The Avenue at Tower City, Cleveland, OH
- TRW Headquarters Building, Cleveland, OH
- WVIZ, Ideastream, Cleveland, OH

Institutional

- Cleveland Museum of Art, Cleveland, OH
- Mentor Library, Mentor, OH
- Morley Library, Painesville, OH
- St. Christopher's Church, Rocky River, OH
- White Tank Mountains Library, Waddell, AZ



Client References

Recently Constructed Projects

Dirar Ahmad
West Virginia Division of Highways
Building 5
1900 Kanawha Blvd., East
Charleston, WV 25305-0430
304-558-2830

Monty Warner
McCoy 6 Properties
401 Grand Central Station Dr # 6002
Morgantown, WV 26505
304-291-2548

John Sommers, Senior Construction Projects Manager
West Virginia University
PO Box 6572
Morgantown, WV 26505
304-293-2856

Mr. Leonard Lewis, Director
West Virginia University
Robert C. Byrd Health Sciences Center
G350 Health Science Center South
Morgantown, WV 26506
304-293-4832

Bob Hammel
Director, Morgantown Municipal Airport
100 Hart Field Drive
Morgantown, WV 26505
304-291-7461

