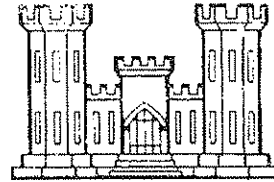


Expression of Interest
for

The WV Army National Guard



RECEIVED

2009 FEB 26 AM 10:55

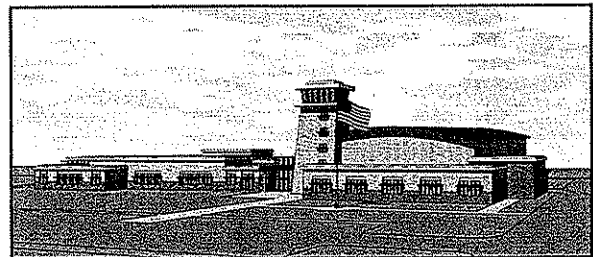
WV PURCHASING
DIVISION

ZMM

Architectural &
Engineering Services

for

Buckhannon Readiness Center
Upshur County, WV



ZMM & CEI

February 26, 2009

Adam R. Krason, AIA, NCARB, LEED AP
ark@zmm.com



222 Lee Steet West
Charleston, West Virginia 25302
304.342.0159 voice • 304.325.8114 fax

ARCHITECTS & ENGINEERS

Steve Branner, AIA, NCARB, Principal
steve@zmm.com



222 Lee Steet West
Charleston, West Virginia 25302
304.342.0159 voice • 304.325.8114 fax

ARCHITECTS & ENGINEERS



ARCHITECTS & ENGINEERS

February 26, 2009

Mr. John Abbott, Buyer
Department of Administration, Purchasing Division
2019 Washington Street, East
P.O. Box 50130
Charleston, West Virginia 25305-0130

**Subject: Buckhannon Readiness Center
West Virginia Army National Guard
Requisition #DEFK9015**

Dear Mr. Abbott:

ZMM is pleased to submit the attached information to demonstrate both our experience and our capability to provide professional architectural and engineering services for the Buckhannon Readiness Center for the West Virginia Army National Guard (WVARNG). We are confident that our recent experience working with the WVARNG, our commitment to creating innovative and award winning facilities, and our efforts to implement sustainable design and construction principles will make ZMM a great partner for the WVARNG for the development of the new Buckhannon Readiness Center.

Since 1959, ZMM has been consistently recognized as one of the largest, fully integrated architecture and engineering firms in the State of West Virginia. An organization of creative professionals with the common interest of working with our clients to design and engineer innovative and cost effective buildings, ZMM has the in-house capability (32 full-time employees) to deliver the professional services necessary to plan and prepare construction documents and provide construction administration services for the Buckhannon Readiness Center.

Please note that as on several recent projects completed for the WVARNG, ZMM will collaborate with Capitol Engineering, Inc. for site and civil design on this project. CEI is a small, locally owned, service oriented, civil engineering firm located in Charleston. CEI has been a critical team member that has demonstrated both client responsiveness and technical excellence. Projects demonstrating ZMM's past collaborations with CEI are included in the attached information.



Mr. John Abbott, Buyer
February 26, 2009
Page 2 of 2

While designing many of the projects noted above, **ZMM** has demonstrated a commitment to meeting strict budget and scheduling requirements. This commitment can be attested to by the high number of repeat and on-going client relationships that we have established.

Thank you for taking the time to review the attached brochure that outlines detailed information regarding the history, services, personnel, experience, and qualifications of **ZMM**. Additionally, please visit our website at www.zmm.com to see the full range of projects that we have designed. We look forward to meeting with you in the near future to review our qualifications, and to discuss our capabilities in more detail.

Respectfully submitted,
ZMM, Inc.

Adam R. Krason, AIA, NCARB, LEED-AP
Project Manager

Attachment: Expression of Interest

cc: file

Buckhannon Readiness Center - Table of Contents

Cover

Cover Letter

Table of Contents

History & Professional Services _____ Section 1

Personnel & Expertise _____ Section 2

Military Experience _____ Section 3

Other Projects _____ Section 4

Award Winning Design _____ Section 5

References _____ Section 6

STATE OF WEST VIRGINIA
Purchasing Division**PURCHASING AFFIDAVIT****VENDOR OWING A DEBT TO THE STATE:**

West Virginia Code §5A-3-10a provides that: No contract or renewal of any contract may be awarded by the state or any of its political subdivisions to any vendor or prospective vendor when the vendor or prospective vendor or a related party to the vendor or prospective vendor is a debtor and the debt owed is an amount greater than one thousand dollars in the aggregate.

PUBLIC IMPROVEMENT CONTRACTS & DRUG-FREE WORKPLACE ACT:

If this is a solicitation for a public improvement construction contract, the vendor, by its signature below, affirms that it has a written plan for a drug-free workplace policy in compliance with Article 1D, Chapter 21 of the *West Virginia Code*. The vendor **must** make said affirmation with its bid submission. Further, public improvement construction contract may not be awarded to a vendor who does not have a written plan for a drug-free workplace policy in compliance with Article 1D, Chapter 21 of the *West Virginia Code* and who has not submitted that plan to the appropriate contracting authority in timely fashion. For a vendor who is a subcontractor, compliance with Section 5, Article 1D, Chapter 21 of the *West Virginia Code* may take place before their work on the public improvement is begun.

ANTITRUST:

In submitting a bid to any agency for the state of West Virginia, the bidder offers and agrees that if the bid is accepted the bidder will convey, sell, assign or transfer to the state of West Virginia all rights, title and interest in and to all causes of action it may now or hereafter acquire under the antitrust laws of the United States and the state of West Virginia for price fixing and/or unreasonable restraints of trade relating to the particular commodities or services purchased or acquired by the state of West Virginia. Such assignment shall be made and become effective at the time the purchasing agency tenders the initial payment to the bidder.

I certify that this bid is made without prior understanding, agreement, or connection with any corporation, firm, limited liability company, partnership or person or entity submitting a bid for the same materials, supplies, equipment or services and is in all respects fair and without collusion or fraud. I further certify that I am authorized to sign the certification on behalf of the bidder or this bid.

LICENSING:

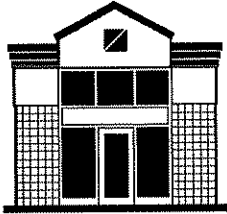
Vendors must be licensed and in good standing in accordance with any and all state and local laws and requirements by any state or local agency of West Virginia, including, but not limited to, the West Virginia Secretary of State's Office, the West Virginia Tax Department, West Virginia Insurance Commission, or any other state agencies or political subdivision. Furthermore, the vendor must provide all necessary releases to obtain information to enable the Director or spending unit to verify that the vendor is licensed and in good standing with the above entities.

CONFIDENTIALITY:

The vendor agrees that he or she will not disclose to anyone, directly or indirectly, any such personally identifiable information or other confidential information gained from the agency, unless the individual who is the subject of the information consents to the disclosure in writing or the disclosure is made pursuant to the agency's policies, procedures and rules. Vendor further agrees to comply with the Confidentiality Policies and Information Security Accountability Requirements, set forth in <http://www.state.wv.us/admin/purchase/privacy/noticeConfidentiality.pdf>.

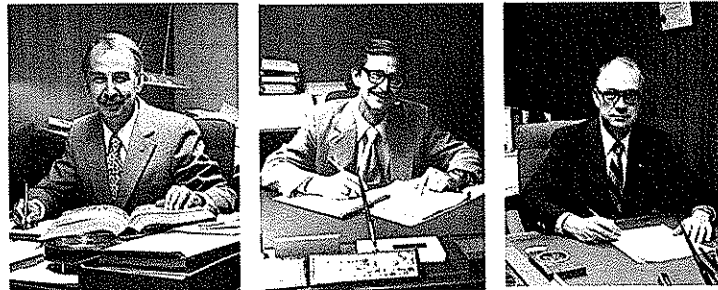
Under penalty of law for false swearing (*West Virginia Code* §61-5-3), it is hereby certified that the vendor affirms and acknowledges the information in this affidavit and is in compliance with the requirements as stated.

Vendor's Name: ZMM, Inc.
Authorized Signature: Ad R K, AIA Date: 26-FEB-2009



History & Philosophy of ZMM

Ray Zando, Ken Martin and Monty Milstead established the **Charleston, West Virginia** based Architectural and Engineering firm of Zando, Martin and Milstead in 1959 with a staff of five people. The firm obtained an early foothold in the professional services sector in the state and grew in both size and stature. Mr. Steven Branner, a recent graduate of the University of Cincinnati, joined the firm in 1967 as a project architect. Mr. Robert Doeffinger obtained a B. S. degree in Mechanical Engineering from West Virginia University and an M. S. degree in Architectural Engineering from The Pennsylvania State University before joining the firm in 1976.



Mr. Zando, Mr. Martin and Mr. Milstead, reaching retirement age, transferred the ownership of the firm to Mr. Branner and Mr. Doeffinger in 1986 and they guided and expanded the firm to its present size of approximately 35 people. Since then, Dave Ferguson, Rod Watkins, and Adam Krason have joined in ownership of the firm.



The philosophy of ZMM was established early on by the original partners and continues today due to careful selection of contemporaries. At ZMM we are proud of our heritage of fine architecture, engineering and client service. This pride shows in everything we do, from the way we interface with clients to the way we deliver our designs.

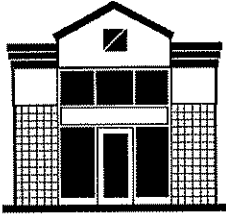




History & Philosophy of ZMM

Since the beginning, ZMM has been dedicated to the integrated approach to building design. The inclusion of engineering services (civil, mechanical, electrical and structural) as well as interior design makes ZMM unique among architectural firms and fulfills the needs of clients for single point responsibility. More importantly, an integrated approach provides better coordinated, accurate, and concise documents. ZMM's commitment to clients is to provide the highest quality professional services available. In order to maintain this high level of quality, we strictly conform to a Quality Assurance Program, a unique feature of ZMM.

We work hard at staying generalists, while, by virtue of maintaining a practice for over forty years, having extensive experience in different building types. We approach each project as a unique opportunity and execute each design accordingly. Nothing is done without our full, professional attention. ZMM has a demonstrated record of success in the specialization of architecture and engineering.



History & Philosophy of ZMM

COMMUNITY SUPPORT

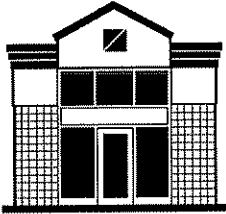
In addition to our design efforts, **ZMM** has been supportive of institutions and organizations that contribute to the cultural and educational landscape in West Virginia.

ZMM offers financial support to several community and state-wide institutions which reflect the superior quality that we strive to achieve on each of our projects. The following organizations also impact the educational environment through their support of local artisans, performances, broadcasts, and community service:



West Virginia Symphony Orchestra





Professional Services

Since its inception, ZMM has been dedicated to the integrated approach to building design (providing full architectural and engineering services in-house) which is unique to architectural firms of our size. Our past successful experience demonstrates that providing multi-disciplined services within one organization results in a fully coordinated project. ZMM has the qualified professionals available to provide services throughout the duration of a project from the initial planning phases through post-occupancy evaluations and beyond.

Additionally, ZMM is constantly working to improve the services we offer by addressing emerging and evolving trends that impact the design and construction market. ZMM has five LEED accredited Professionals on staff to address the needs of our clients who are interested in designing buildings that meet the US Green Building Council's standards. This continues ZMM's active implementation of sustainable design principles on our projects.

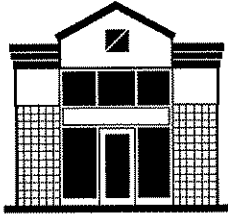
ZMM offers all of the following professional services within our organization:

PRE-DESIGN

- Educational Facility Planning
- Programming
- Space Planning
- Feasibility Studies
- Existing Building Evaluation
- Site Evaluation and Analysis
- Master Planning
- Construction Cost Estimating

Executive Summary		Index (Pages)
National Guard Bureau Area (NSF)		2
Operations	38,073	
Sub-Total (NSF)	38,073	
Total (GSF)	38,073	
Department of Energy Area (NSF)		3, 4
Design	4,150	
Construction	18,011	
Operations/Maintenance	19,348	
Analysis	300	
General Support	1,362	
Sub-Total (NSF)	47,311	
Total (GSF)	46,763	
AFRC Area (NSF)		6
Structural	12,156	
Site Storage	0	
General Support	0	
Special Equipment	0	
Sub-Total (NSF)	12,156	
Total (GSF)	12,156	
Joint Interagency Training Center - East Area (NSF)		6
Construction	11,673	
Operations	21,000	
Design	0	
Sub-Total (NSF)	32,673	
Total (GSF)	32,673	
Bitling Area (NSF)		7
Design	57,722	
Sub-Total (NSF)	57,722	
Total (GSF)	57,722	
Total Building Area Area (GSF)		
National Guard Bureau	38,073	
Department of Energy	46,763	
Armed Forces Readiness Center	38,000	
Joint Interagency Training Center	45,873	
Bitling	57,828	
Total (GSF)	226,537	





Professional Services

DESIGN

Architectural Design
Sustainable Design
Interior Design
Landscape Architecture
Structural Engineering
Mechanical Engineering

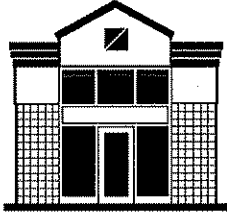
Electrical Engineering
Civil Engineering
Data System Design
Lighting Design
Energy Consumption Analysis



POST DESIGN

Construction Administration
Value Engineering
Life Cycle Cost Analysis
Post-Occupancy Evaluation

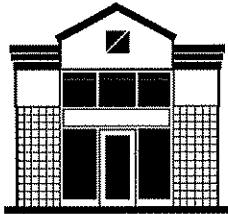




Quality Assurance

At ZMM, we strive to be the best. Our Quality Assurance Program is one step in the process of exceeding our clients' expectations. This program includes the following six components:

1. **Selecting the Project Team**
ZMM's diverse staff ensures that each project team is made up of highly qualified members, each dedicated to the project's success.
2. **Identifying Project Requirements**
Project team members are fully integrated in each phase of the design process, ensuring a quality project from the beginning, and so are better able to take advantage of early sustainable design decision-making.
3. **Identifying Client Expectations**
Knowing and understanding our clients' expectations is our goal. This knowledge gives ZMM a baseline for exceeding expectations.
4. **Ongoing Project Reviews**
As part of the ongoing project reviews, we conduct quality assurance evaluations during each stage of the project:
 - Schematic Design Phase
 - Design Development Phase
 - Construction Documents Phase
 - Construction Administration Phase
5. **Post Project Review**
At the completion of every project, ZMM staff members participate in a learning session to gain insight useful for future projects.
6. **Staff Training, Assessment and Enhancement**
Ongoing staff development and training is very important to ZMM. Providing increased opportunities for learning and advancement leads to happier employees and even more successful projects.



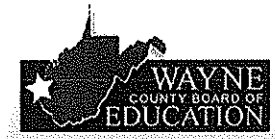
Ongoing Clients

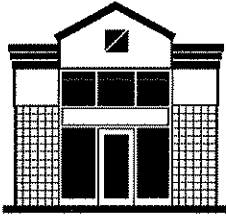
The quality of our work is the key to our continued success and repeat client base. We encourage our clients to participate in the quality assurance review process as much as possible. In most cases, the owner's participation is required to ensure a quality project.

Repeat Clients:



Lincoln County Schools





History of CEI

Capitol Engineering is a locally owned consulting engineering firm founded in 1999. CEI has steadily grown since its inception with three employees. CEI possesses in-house services in civil, environmental and mining engineering, contract administration, and surveying and mapping. Our staff is made up of two Professional Engineers, a Professional Surveyor, Project Engineers and Scientists, CAD Operators, Technicians, and administrative personnel.

Our client base is comprised of contractors, architects, engineers, developers, private industry, and federal and state agencies. Capitol Engineering, Inc. (CEI) proposes to perform civil engineering and surveying services for the West Virginia National Guard to develop engineering plans and specifications for the Jackson County Readiness Center.

We have experience planning, designing, specifying, preparing contract documents, bidding and performing contract administration on many types of military facilities including Readiness Centers, Airfields, Training Areas and Ranges. Our experience and resources give us the ability to handle both complex and routine projects.

CEI offers the highly specialized experience, attention to minute detail, and the unparalleled level of personal client support provided by a small boutique firm. We are particularly attractive because:

- Our management, engineering and professional staff has a combined total of over 120 years of experience – much of it acquired while working on military facilities.
- Staff has participation and completion of 30 National Guard projects in West Virginia.
- Management team has 30+ years and over 50 projects total specialized experience providing timely, cost effective construction documents for military facilities.
- Experience to successfully handle all design situations and problem types anticipated to occur under this contract.
- Construction and Facilities Maintenance Office satisfaction with prior work/projects performed by key staff members.

CEI



CEI Professional Services

A complete list of services is as follows:

Civil Engineering

Geotechnical Engineering
Project Management
Rail Siding Design
Roadway Design
Site Development & Grading Plans
Siting Studies
Slope Stability Analysis
Stormwater Systems
Wastewater Treatment System

Environmental Engineering

Environmental Due Diligence
Environmental Site Reviews
Erosion & Sedimentation Control
NPDES, GPCC, SPCC Plans
Solid Waste & Landfill Design
Stormwater Management Plans

Surveying & Mapping

Control Surveys
Floodplain Studies
GPS Surveys
Mineral Reserve Surveys
Planimetric Surveys
Quantity Determination Surveys
River & Lake Soundings
Topographic Survey

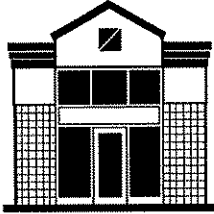
Construction Administration

Bid Analysis & Management
Construction Observation
Damage Settlement
Submittal Review

Mining Engineering

Abandoned Mine Land Reclamation
Acid Mine Drainage Passive Treatment
Geologic & Hydrologic Evaluations
Mine-Related Subsidence Investigations
Mining Permits, Modifications, & IBR's
Reclamation Liability Audits
Surface Mine Surveying & Mapping





Adam R. Krason, AIA, NCARB, LEED AP

Position

Project Manager

Education

Bachelor of Architecture; The Catholic University of America, Washington, D.C.; 1998

B.S., Civil Engineering; The Catholic University of America, Washington, D.C.; 1998

Employment History

2003 - Present, Project Architect, ZMM, Inc.

1998 - 2003, Project Architect, Charleston Area Architectural Firm

1998, Consultant, Anderson Consulting

Professional Credentials

Registered Architect: (WV, OH)

LEED Accredited Professional

Member, Construction Specifications Institute – CDT

Member, American Institute of Architects

NCARB Certified

Civic Affiliations

West Virginia Vision Shared-Sustainable Economic Development Team

West Side Main Street Design Committee, Charleston, West Virginia

West Virginia Qualifications Based Selection Council

Development Council, St. Agnes School, Charleston, West Virginia

Professional Experience

Mr. Krason's experience includes all aspects of the design and production of small and large projects with an emphasis on Military, Public, Government Facilities, Educational Facilities and Industrial Facilities. Mr. Krason also serves on ZMM's Board of Directors.

Specific project responsibilities: building programming, code compliance review, assistance with the preparation of architectural specifications, project budgeting and scheduling, schematic design compliance with project requirements, and the general overview of each project to ensure client expectations.

Project Experience

West Virginia Army National Guard - Logan Readiness Center

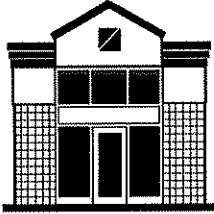
West Virginia Army National Guard - CFMO Expansion Project

Judge Donald F. Black Courthouse Annex

State Office Building 5, 6, & 7 Analysis

The Boulevard at 2412 - Residential Development





Robert M. Fuller, PE

Position

Principal, Capitol Engineering, Inc.

Education

M.S., Engineering, Marshall University Graduate College, 1997
B.S., Engineering Technology, West Virginia Institute of Technology, 1989

Employment History

2000 - Present, Capitol Engineering Inc., Charleston WV

Professional Credentials

Society of American Military Engineers
American Society of Civil Engineers
American Institute of Architects
Construction Specifications Institute

Professional Experience

Project Manager with fifteen (15) years of experience with site investigation, planning, design and contract administration services on military, site development and mine reclamation projects. Mr. Fuller has been fully responsible technically, managerially and administratively for the planning, investigation, design and contract document preparation for over fifty (50) projects in the State of West Virginia.

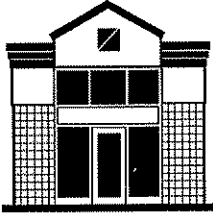
Mr. Fuller has served as Associate Professor of Civil Engineering Technology at West Virginia University Institute of Technology on a full-time, part-time and adjunct basis.

Project Experience

Mr. Fuller was principal or project manager for the following West Virginia Army National Guard Projects completed by Capitol Engineering, Inc.

Ripley Armed Forces Reserve Center
Elkins Armed Forces Reserve Center
Fairmont Armed Forces Reserve Center
Morgantown Readiness Center
Summersville Readiness Center
Kingwood Readiness Center
Glen Jean Armed Forces Reserve Center
Logan County Feasibility Study
Mingo-Logan Siting Study
Camp Dawson Runway Extension
Camp Dawson Fuel Canopies
Williamson Armory Wash Pad and Military Parking

CEI



Steven Branner, AIA, NCARB

Position

Principal, ZMM, Inc.
Corporate Management
Architectural Programming
Architectural Design and Production

Education

B.S., Architecture; University of Cincinnati, Cincinnati, Ohio; 1967

Employment History

1967-1973, Project Architect; ZMM Inc.
1973-1982, Director of Architecture; ZMM, Inc.
1982-present, President; ZMM, Inc.

Professional Credentials

Registered Architect (WV, VA, OH, KY, FL, NY, CA)
NCARB Certification
Professional Member; American Institute of Architects (WV)
President, 1977 & 1978

Civic Affiliations

Member; South Charleston Rotary Club
Past member and Chairman, WV Archives & History Commission

Professional Experience

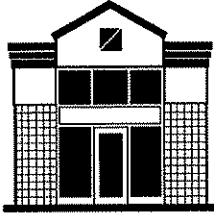
Mr. Branner has been employed with ZMM since 1967. His experience includes all aspects of the management, design, and production of small projects to those exceeding \$100M with an emphasis on Military / Public / Governmental Facilities, Correctional Facilities, and Industrial Facilities.

Mr. Branner also maintains an active role in each project in which he is the principal-in-Charge from it's inception through construction completion. Specific project responsibilities include contract negotiation, building programming, project budgeting, and scheduling, schematic design compliance with project requirements, cost estimating, quality control, and the general overview of each project to insure that client expectations are met.

Major clients overseen by Steve include:

West Virginia Regional Jail & Correctional Facility Authority
Dow Chemical Company
NGK Spark Plug Company
Cecil I. Walker Machinery Company
West Virginia Army National Guard
West Virginia General Services Division
Kanawha County Public Library
Charleston Area Medical Center (CAMC)
Highland Hospital





Robert C. Doeffinger, P.E.

Position

Principal, Engineering Project Manager
Corporate Management, Project Management and Coordination,
Engineering Programming and Design

Education

B.S., Mechanical Engineering; West Virginia University,
Morgantown, West Virginia; 1973
M.S., Architectural Engineering; Pennsylvania State University,
University Park, Pennsylvania; 1976

Employment History

1982 - Present, Vice-President, Secretary and Treasurer; ZMM, Inc.
1977 -1982, Director of Engineering; ZMM, Inc.
1976 -1977, Mechanical and Architectural Engineer; ZMM, Inc.

Professional Credentials

National Council of Examiners for Engineering and Surveying
(NCEES)
Registered Engineer (WV, TN, FL, PA, VA, NC, SC, ME, OH, NH,
NY, KY)
Member; ASHRAE - Chairman, Technical Committee 4.1 - HVAC
Load Calculations

Civic Affiliations

Councilman; City of Point Pleasant, West Virginia
Director; Mason County Development Authority
Director; Point Pleasant River Museum
Member; West Virginia Institute of Technology Electrical Engineers
Technical Advisory Committee

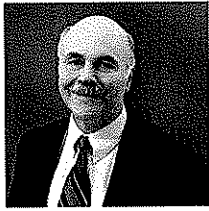
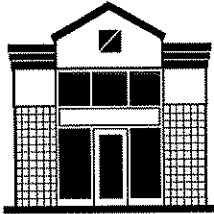
Professional Experience

Mr. Doeffinger is Principal-in-Charge of Engineering. It is his responsibility to ensure that the mechanical and electrical engineering components are coordinated and integrated into the final design.

Mr. Doeffinger is responsible for new design and retrofit of chilled water systems for all building types, including large regional shopping malls. He is involved daily with the firm's selection of appropriate systems for all building types and performs life cycle cost analysis and energy studies.

Mr. Doeffinger is a member of the American Society of Heating, Ventilation and Air-Conditioning Engineers. He is the current national Chairman of the Technical Committee on Heating and Air-Conditioning Load Calculation. He is involved in writing the National Standard on the Method of Calculation, which will shape the nature of the future building energy use for the nation.





Steven L. Cook, P.E.

Position

Senior Mechanical and Electrical Engineer

Education

B.A., English, West Virginia University, 1972

2 Years toward B. S., Mechanical Engineering, WVIT, 1974-1975

M.A., Humanities, Marshall University Graduate College, 2004

Employment History

1989-Present, ZMM, Inc., Senior Mechanical Engineer

1976-1989, Charleston Area Engineering Firm, Project Manager

1972-1976, Charleston Area Engineering Firm, Designer

Professional Credentials

Registered Engineer (WV)

Member of ZMM's Board of Directors

Member of ASHRE

Professional Experience

Mr. Cook started his career in 1972 as a designer for an engineering firm in Charleston, WV. He is a Professional Engineer registered in West Virginia. He has designed and engineered many projects throughout the state of West Virginia.

Responsibilities Include:

Mechanical Design and Engineering.

Serves as liaison between clients and utility companies.

Design of sanitary and gas site utilities, site utility specifications.

In-house review of plumbing, sprinkler system, fire pump, and domestic water booster pump designs.

Review of plumbing, fire protection specifications, and temperature control design.

Equipment selection - air handling units, pumps, and boilers, site visits, observation reports and punch lists.

Project Experience

WV Army National Guard - Glen Jean Armed Forces Center

WV Army National Guard - Logan Readiness Center

WV Army National Guard - CFMO Expansion Project

State of West Virginia Regional Jails

State of West Virginia Juvenile Detention Centers

Highland Hospital

Saint Albans High School

Lincoln County High school





Stephen E. Hedrick II, PE

Position

Structural Engineer

Education

B.A., Civil Engineering, West Virginia University Institute of Technology, Montgomery, WV, 1996-2001

M.A., Civil Engineering - Structural, University of Tennessee Knoxville, TN, 2001-2003

Employment History

2007-Present, ZMM, Inc.

2003-2007, Principal Engineer, McCall Engineering, LLC, Sarasota, FL

2001-2003, Teaching Assistant and Thesis Research, University of Tennessee, Knoxville, TN

Professional Credentials

Professional Engineer (PE), 2007

Certified Engineer in Training (EIT), 2001

Professional Experience

Responsible for structural engineering design of residential structures, commercial structures, institutional structures and small scale bridges.

Researched and developed design criteria for structural insulated panels.

Prepared design calculations for earthquake and wind design of FRP tanks.

Supervised work of design engineers in preparation of construction documents.

Project Experience

New River Elementary - Supplemental Support

Hacker Valley Elementary - Supplemental Support

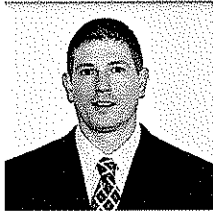
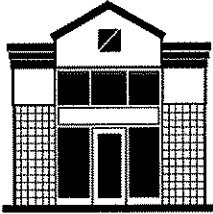
Barboursville Middle School - Supplemental Support

Southside Elementary/Huntington Middle School

Glen Jean Armed Forces Center - Joist Reinforcement

West Virginia Cultural Center

Highland Hospital



R. Scot Casdorff, PE

Position

Electrical Engineer

Education

B.S., Electrical Engineering; *West Virginia University Institute of Technology, Montgomery, West Virginia; 1995*

Employment History

2000 - Present, Electrical Engineer, ZMM, Inc., Charleston, WV

1995 - 1999, Electrical/Control Systems Designer, WV Engineering Firm

Professional Credentials

Professional Engineer (WV)

Professional Experience

Mr. Casdorff started his career in 1995 as an electrical/control systems designer. He is responsible for Electrical Design and Engineering on various ZMM projects.

Responsibilities Include:

Lighting Design (Interior & Exterior)

Electrical Power Distribution

Security System Design

Data System Design

Fire Alarm System Design

Sound System Design

Division 16 Specifications

Electrical Drafting & Design CAD

Project Experience

Lincoln County High School

Southside Elementary and Huntington Middle School

Milton Middle School

Wayne Elementary School

Martha Elementary School

Jaeger Elementary School

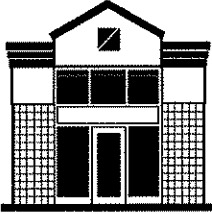
West Virginia Juvenile Detentions Centers

Logan Readiness Center

Morgantown Readiness Center

CFMO Expansion

Glen Jean Armed Forces Center



Alana Pulay, IIDA, LEED-AP

Position

Interior Designer, ZMM, Inc.

Education

B.S., Interior Design; *The Ohio State University, Columbus, Ohio;*
2003

Employment History

2003 - Present, Interior Designer, ZMM, Inc.
2002 - 2003, Interior Design Intern, The Ohio State University Office
of Student Affairs

Professional Credentials

LEED-Accredited Professional (Commercial Interiors), 2008
Registered Interior Designer (WV)
NCIDQ Certificate, 2005
Professional Member IIDA

Professional Experience

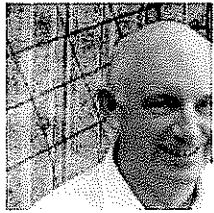
Ms. Pulay has experience detailing and specifying interior elements and furnishings to successfully create design solutions that satisfy the clients within budget limitations. She has worked on many educational, correctional, corporate, industrial and retail projects.

Ms. Pulay is also actively involved in the programming and space planning efforts at ZMM. This involvement helps ensure that the interior environment matches the architectural design in quality, level of detail, and budget. Her involvement continues through the selection and installation of furnishings.

Project Experience

Lincoln County High School
Erma Byrd Higher Education Center
Wayne Elementary School
Martha Elementary School
Valley Dale Elementary School
Salem/Gore Middle School
Kellogg
War K-8
Jaeger- Big Creek High School
CFMO Expansion
Glen Jean Armed Forces Center
Western Regional Jail
Robert L. Shell - Juvenile Center





Michael D. Abernethy, LC, IESNA

Position

Electrical and Lighting Designer

Education

A.S. Drafting and Design Engineering Technology, WV Institute of Technology, 1970

IESNA Certificate of Technical Knowledge (TKE) in Lighting Design

Employment History

1992 - Present, ZMM, Inc., Electrical Designer/Technician

1988 - 1992, WV Signal & Light, Inc., Construction Estimator/
Purchasing Agent & Office Manager

1973 - 1988, ZMM, Inc., Electrical Designer/Technician

1970 - 1972, US Army, Construction Draftsman/Model Maker

1970 - 1973, FMC Chemicals, Designer/Draftsman

Professional Credentials

Lighting Certified by the National Council on Qualifications for the
Lighting Professions (NCQLP)

Master Electricians License (WV)

Professional Experience

Mr. Abernethy is responsible for the design of interior and exterior building lighting, lighting control and energy management system design, building electrical power distribution design, data system, sound system, fire alarm system, security system design, closed circuit TV system and emergency generator system. Mr. Abernethy also provides commercial building electrical budget estimating, and existing and new facilities inspection and documentation at ZMM.

In addition to Mr. Abernethy's design responsibilities, he also serves on ZMM's AutoCAD production committee.

Project Experience

Lincoln County High School

St. Albans High School

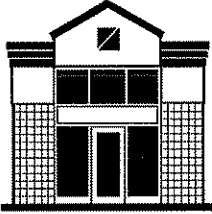
Southside Elementary/Huntington Middle School

Martha Elementary School

Greenbrier East High School

Erma Byrd Higher Education Center

WV State Office Buildings



Nathaniel Spencer, Associate AIA

Position

Designer, ZMM, Inc.

Education

Bachelor of Architecture, University of Tennessee, Knoxville, TN, 2007

Architectural Drafting and Construction Technology, West Virginia State College, Institute, WV - College Credit received

Employment History

2007 - Present, Designer, ZMM, Inc.

2003 - 2006, Summer Intern, ZMM, Inc.

Professional Credentials

Associate Member; American Institute of Architects (WV)

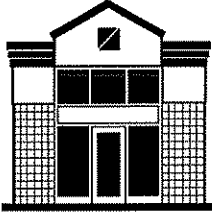
Professional Experience

Mr. Spencer has been employed by ZMM since 2003 when he started working as an intern. Experience includes the production of architectural drawings throughout all phases of the project. Mr. Spencer has background developing both 3-D and physical models along with construction document production.

Mr. Spencer works closely with the project architect to efficiently produce clear and accurate drawings to ensure that client expectations are met.

Project Experience:

WV Army National Guard - Logan Readiness Center
WV Army National Guard - Morgantown Readiness Center
WV Army National Guard - Ripley Readiness Center
WV Army National Guard - CFMO Expansion Project
Judge Black Courthouse Annex
Martha Elementary School
Hacker Valley Pre-K-8 School
Southside Elementary/Huntington Middle School
The Boulevard at 2412



David R. Unrue, AAIA

Position

Construction Administration, ZMM, Inc.

Education

Previously Certified by the WV Department of Highways as Nuclear Compaction Technician, Bituminous Concrete Technician, Aggregate Technician, Portland Cement Concrete Technician Certified Construction Document Technologist, Construction Specification Institute.

Employment History

1991-Present, ZMM, Inc.

1985-1991, West Virginia Board of Regents, Charleston, WV

1979-1984, Charleston Area Architectural Firm, Charleston, WV

Professional Credentials

CSI, Certified Construction Specifier (Construction Specification Institute)

CDT, Certified Construction Document Technologist

Civic Affiliations

Associate Member, American Institute of Architects, West Virginia

Project Experience

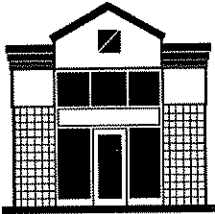
West Virginia Regional Jail Authority

West Virginia Correctional and Juvenile Facilities

Job Corps Center, WV

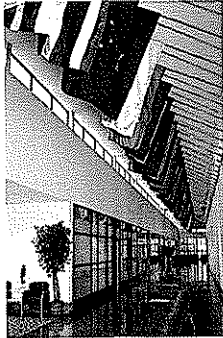
Sears, Roebuck & Company, Retail Centers

Cabell County Schools, WV



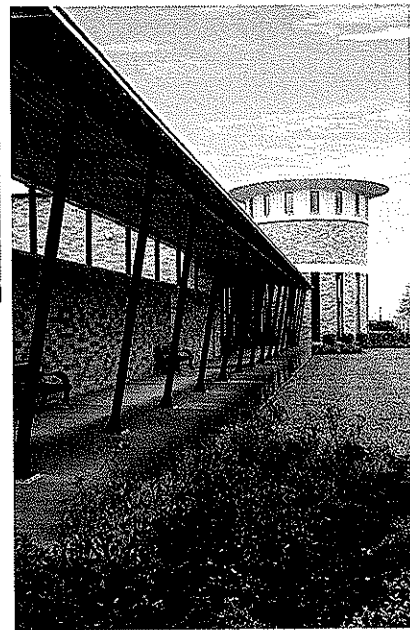
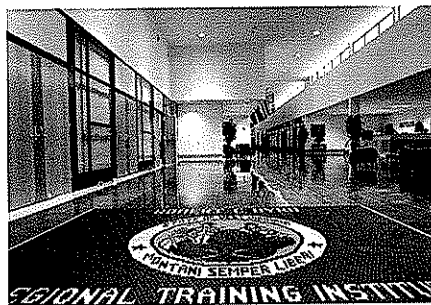
Military Projects

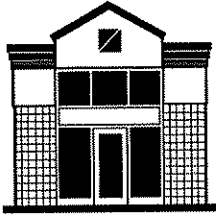
Robert C. Byrd Regional Training Institute Camp Dawson, WV



The Regional Training Institute at Camp Dawson is a new 148,066 square foot facility that will provide a setting for a variety of training classes, meetings, and conferences serving both military and civilian populations from the region and areas throughout the country. The facility includes classrooms, library, sleeping rooms, dining room, auditorium, swimming pool, Post Exchange and snack bar.

Size: 148,066 SF
Completion Date: 2002





Military Projects

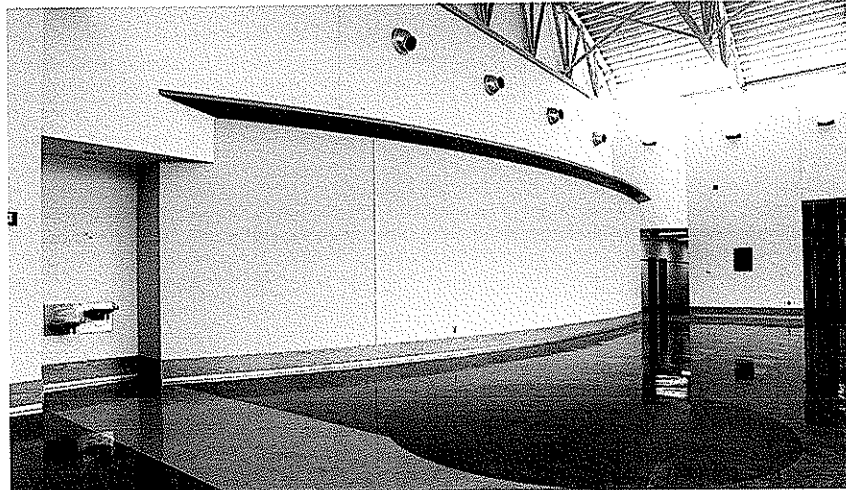
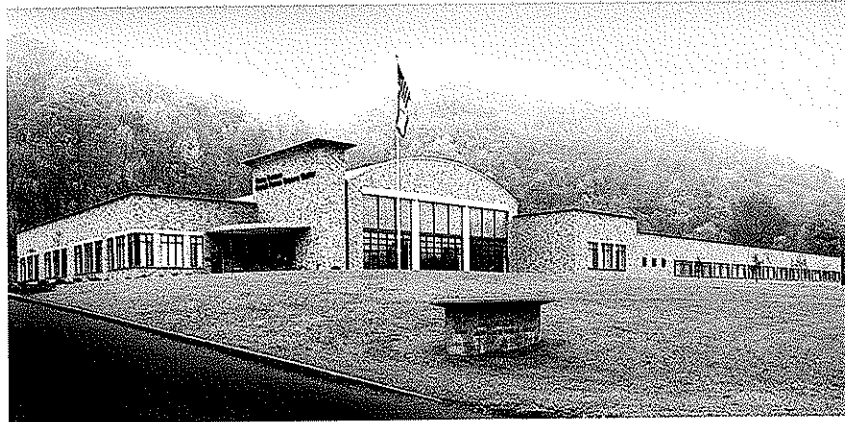
Armed Services Reserve Center Camp Dawson, WV

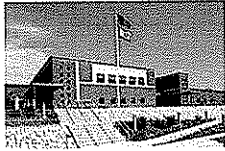
The Armed Forces Reserve Center will house five National Guard and Army Reserve Units and their support personnel. Its mission is twofold: first, to maintain readiness for its attached units and second, to serve as a resource to the surrounding community. The primary readiness mission for the center's attached units is accomplished by providing designated spaces for each unit as well as general educational and gathering spaces that can be shared among the units.

The building's community mission is to provide a gathering space for social functions, a shelter-in-place in times of natural disaster, and a community education resource with distance learning network capabilities. It also includes kitchen and dining facilities and physical fitness areas.

Size: 56,200 SF

Completion Date: June, 2000





Military Projects

Glen Jean Armed Forces Center

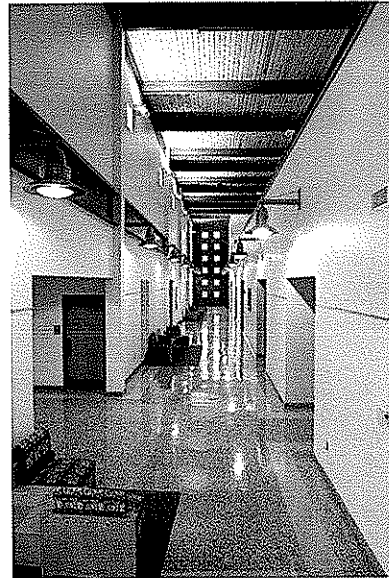
Glen Jean, WV

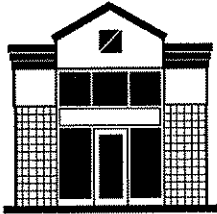
The Glen Jean Armed Forces Center contains three distinct military functions: a facility for routine maintenance of over-the-road and tracked military vehicles, an armory housing four West Virginia National Guard units and the Southern West Virginia Military Entrance Processing Station, where new recruits officially enter the military system.

The brick exterior walls are highlighted with limestone and metal trim accents. A large assembly hall, plus classroom and training space, enhance the ability of the armory building to provide training for military personnel, and additionally to provide space for community functions.

Size: 109,000 SF

Completion Date: 2003





Military Projects

Construction & Facilities Management Office

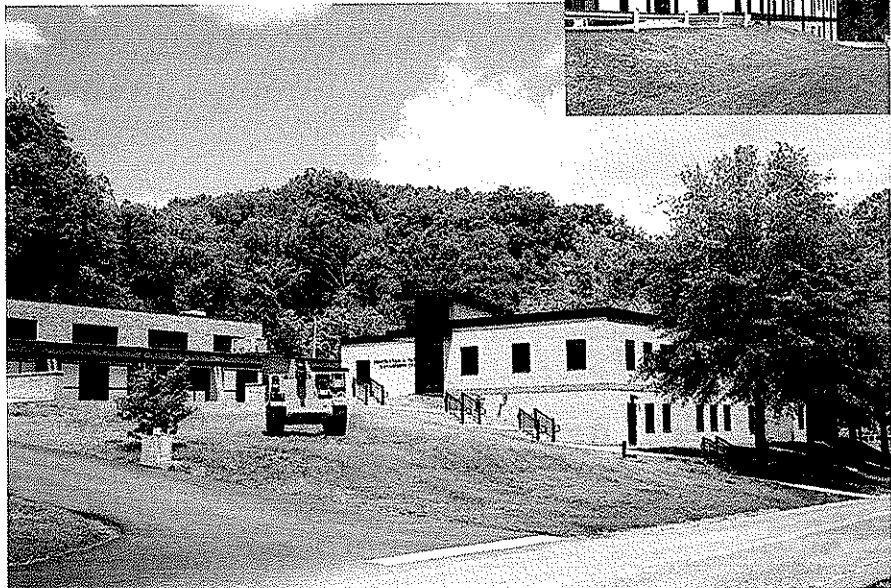
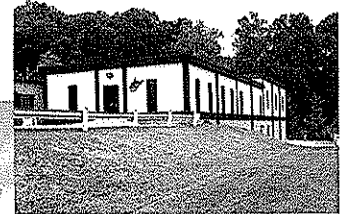
West Virginia Army National Guard
Charleston, WV

The Construction and Facilities Management Office (CFMO) Expansion project will bring all of the operations of the CFMO together under one roof. The branches that will occupy this facility include: Director of Engineering, Environmental, Planning and Programming, Facility Operations & Maintenance, Business Management, Resource Management, and Design and Construction. This new facility is located slightly to the front, and adjacent to the existing facility, lending prominence to the new construction, and providing a new aesthetic to the entire complex. This transitional space was designed to connect the two structures, while maintaining a connection to the outside through use of natural light, direct visual connections to the exterior, large volumes, irregular geometries, and the use of 'natural' materials.

The entry design was coordinated with the Recruiting and Retention building to create an outdoor courtyard, along with new sidewalks, stairs and signage. The entry roof is sloped to provide a greater massing, while a lower canopy provides scale and protection from the elements. Large gathering and work spaces were located on the north elevation to take advantage of large expanses of glazing located to capture indirect light and views of Coonskin Park.

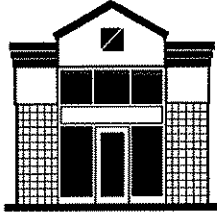
Size: 19,935 SF
Cost: \$3.6M
Completed: January 2008

Before



CEI

ZMM



Military Projects

Logan-Mingo Readiness Center

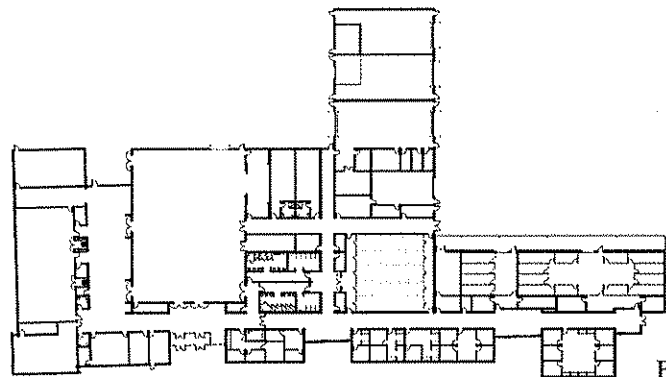
Logan, WV

The design of the Logan-Mingo Readiness center was developed by examining both the program and building site, and developing strategies to design a facility that is functional, responds to site, security, and aesthetic parameters, while requiring minimal maintenance. The building layout was developed by working closely with the end-users to determine the appropriate configuration of building spaces to maximize the efficiency of the operations, and to respond to the unique missions of the 150th Armored Reconnaissance Squadron and the 156th Military Police (LNO) Detachment. Clear separation of "public" and "private" areas within the facility, unique office configurations related to training requirements, and the addition of State Funded additional spaces.

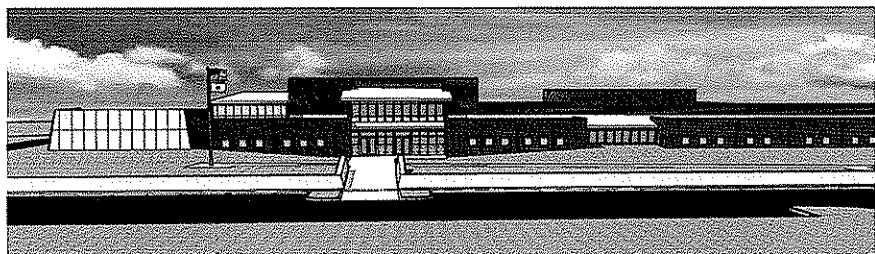
The exterior (and in many cases the interior) aesthetic of the facility was driven by the location of the Readiness Center within an industrial park on a reclaimed surface mined site. The decision led to the use of reinforced cast-in-place retaining walls that became both a functional and visual focus. Similar pre-cast walls are used to anchor the facility at the Distance Learning Center, while a cast-in-place retaining wall serves as a part of the Anti-Terrorism/Force Protection design.

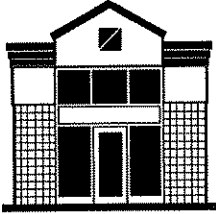
Project Budget: \$12M

Size: 54,000 SF



Floor Plan





Military Projects

Ripley Armed Forces Reserve Center

Wv Army National Guard

Milwood, WV

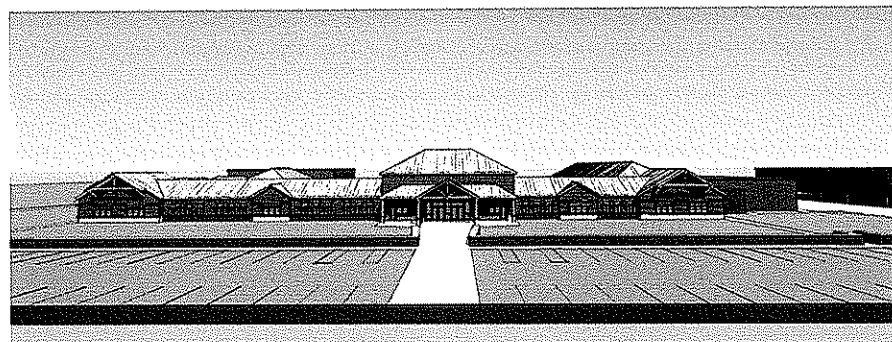
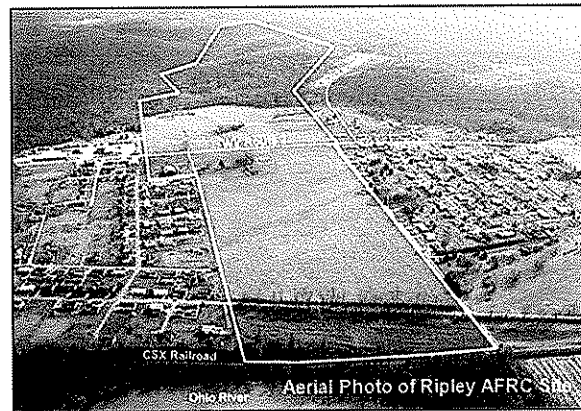
The Ripley Armed Forces Reserve Center Project includes a Readiness Center, a maintenance shop and an equipment storage building. The complex consists of over 50,000 square feet of heated space, additional unheated storage and approximately 22,000 square yards of rigid and flexible paving. The new facility occupies a 335 acre tract on the former Eastern Star property near Millwood in Jackson County. Capitol Engineering, Inc. (CEI) is performing all of the site investigation and site/civil design aspects of the project. This project has an estimated cost of \$20,000,000.

The project includes the following major design elements:

1. Utilities and general site features
2. Military equipment parking, vehicle wash and fueling facilities, and loading ramp
3. Access roads and civilian parking lots

The project included the following site investigation elements:

1. Preliminary engineering, planning, and field reconnaissance
2. Surveying and mapping
3. Geotechnical investigation and laboratory testing
4. Drainage and construction easements





Military Projects

Morgantown Readiness Center

West Virginia Army National Guard
Monongalia County, West Virginia

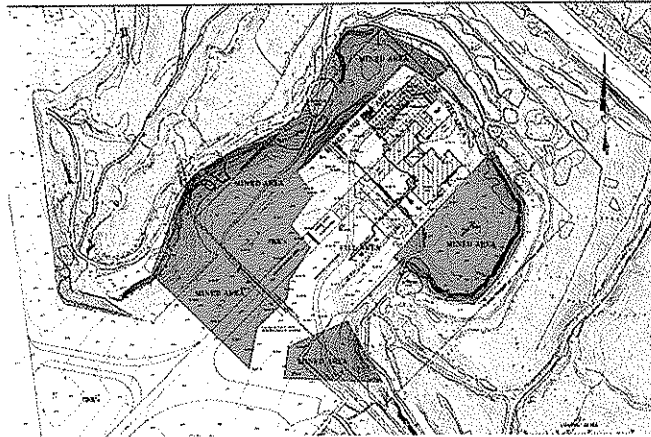
The Morgantown Readiness Center complex consists of over 50,000 square feet of heated space, additional unheated storage and approximately 32,000 square yards of rigid and flexible paving. The new facility will occupy a 35 acre tract on a former runway at the Morgantown Municipal Airport in Monongalia County. Capitol Engineering, Inc. (CEI) is performing all of the site investigation and site/civil design aspects of the project. Total project cost is estimated to be \$20,000,000.

The project includes the following major design elements:

- Utilities and general site features
- Military equipment parking, vehicle wash and fueling facilities, and loading ramp
- Access roads and civilian parking lots

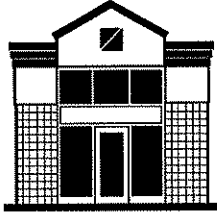
The project included the following site investigation elements:

1. Preliminary engineering, planning, and field reconnaissance
2. Surveying and mapping
3. Geotechnical investigation and laboratory testing
4. Mine subsidence investigation
5. Utility and construction easements



CEI

ZMM



Military Projects

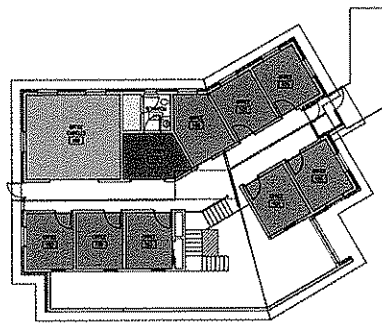
Family Readiness Center

West Virginia Army National Guard
Charleston, West Virginia

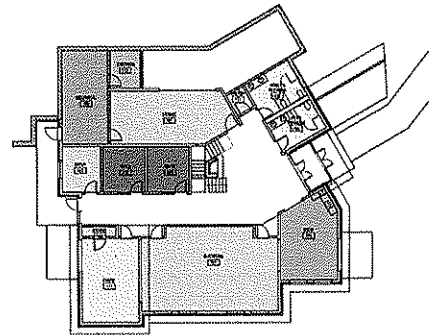
The Family Support Service Center is a two story brick building with a sloped roof stepped into the wooded hillside adjacent to the Army National Guard facilities in Charleston West Virginia. The building is designed to provide for a multitude of military family assistance, guidance, education, training, and mentoring programs.

The support center contains 11 office spaces, a chapel, and a variety of classroom and meeting spaces for various programs. The building provides an abundance of natural light and a central fireplace to project a warm comforting and supportive atmosphere

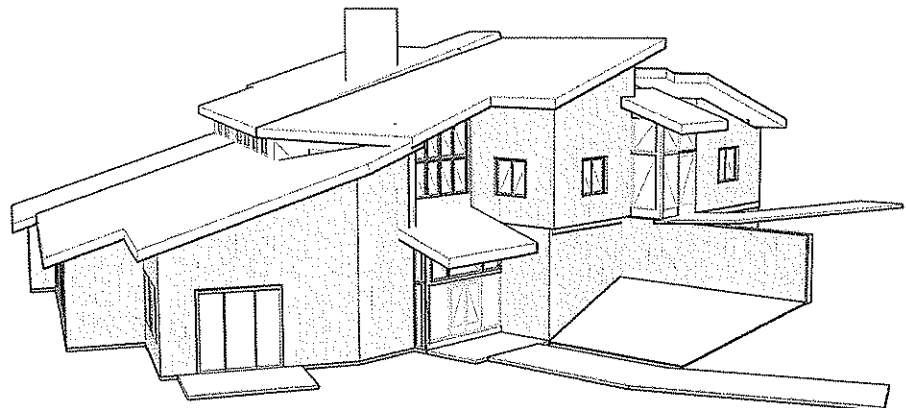
Project Cost: Est. \$1.57M
Size: 7,400 SF
Completion: Est. January 2010



Upper Level



Lower Level





Military Projects

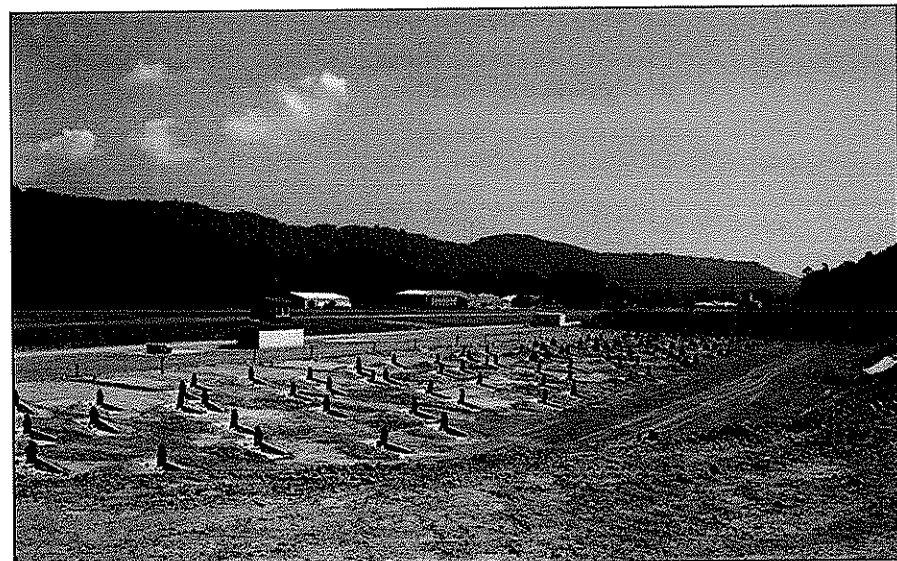
Camp Dawson - Lower Range Renovations

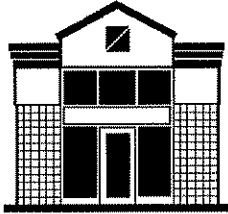
West Virginia Army National Guard
Camp Dawson, West Virginia

CEI prepared the plans for renovations to the Small Arms Range Complex at Camp Dawson Army Training Site. The project required the development of a comprehensive Range Master Plan. CEI facilitated the plan development and served on the Master Planning Committee along with personnel from the WVARNG Facilities Management Office, Camp Dawson Operations, and the Post Engineer.

CEI performed site investigation services which included surveying and mapping, inspection of existing facilities, and a limited geotechnical investigation. CEI developed design and construction documents for this project. The most significant upgrades to the facility included a new Combat Pistol Qualification Course and a new 25-meter rifle range. The project also included the design of range support facilities including observation towers, storage buildings, a classroom/latrine building and the extension of utilities from main post.

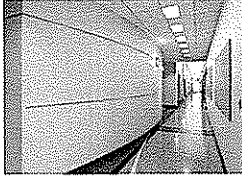
Total project cost was \$1.25M.





Higher Education Facilities

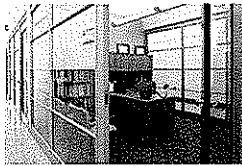
Erma Byrd Center Public Higher Education Center Beckley, WV



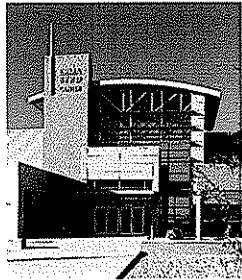
This project provides a central location for classroom and administrative space to be shared by six different colleges and universities. It is the first building of a planned campus environment to be comprised of other classroom buildings and research facilities.



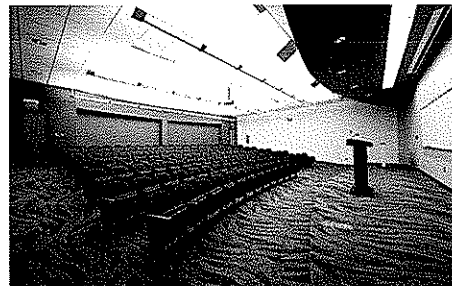
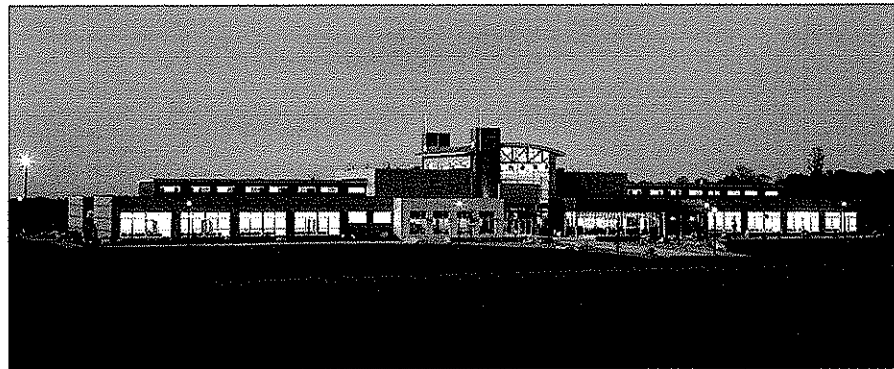
The project consists of 29,700 SF on the main level and 3,300 SF of mechanical mezzanine. Being a teaching facility, the building itself is designed to be a teaching tool. Daylighting is incorporated throughout the building and the mechanical equipment is designed to be viewed and monitored by students in a learning environment. Using data collected by various sensors, the control system can graphically display how all systems react to changes in environmental conditions.

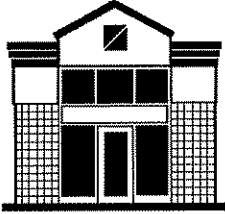


This project was funded by appropriations from Senator Robert C. Byrd, the Higher Education Policy Commission and a grant from the Appalachian Regional Commission.



Size: 33,000 SF
Cost: \$7.5M
Completed: August, 2007





High School Projects

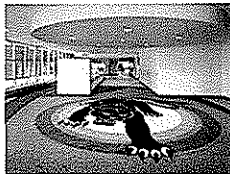
Lincoln County Comprehensive High School Lincoln County Schools Hamlin, WV



This consolidated senior high school for 850 students in grades 9 through 12, includes two gymnasiums with seating for 840 in the main gym, full food service facilities, a 300 seat auditorium, a library featuring state of the art technology, and all required curricular classroom spaces.



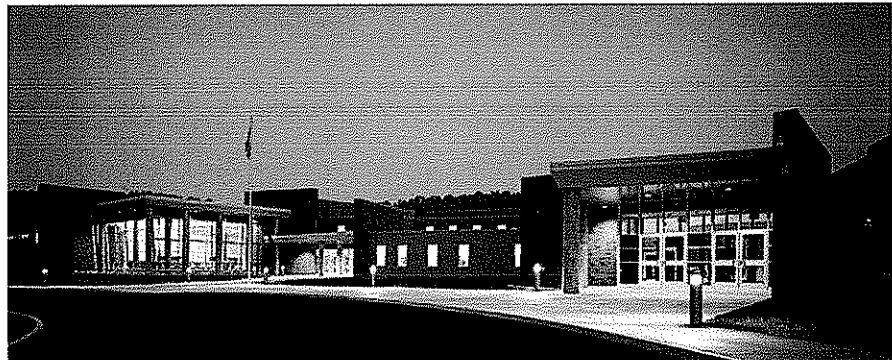
Vocational space is included in the facility making it one of the new breed of comprehensive high schools. The building is air conditioned with a four pipe, hot water/chilled water, air handling system meeting all indoor air quality requirements. It also includes LAN cabling system, integrated classroom intercom telephone and program system, closed circuit television, cable television system, fire alarm and perimeter security system.

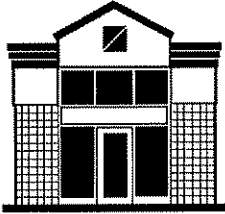


This facility is one of the first educational buildings in the state to include sustainable building design features such as classroom daylighting with automatic lighting control, high efficiency HVAC equipment, and reduced storm water runoff.



Size: 216,500 SF
Cost: \$32M
Completed: August, 2006



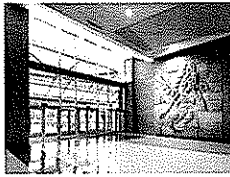


High School Projects

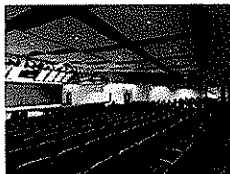
St. Albans High School Kanawha County Schools St. Albans, WV



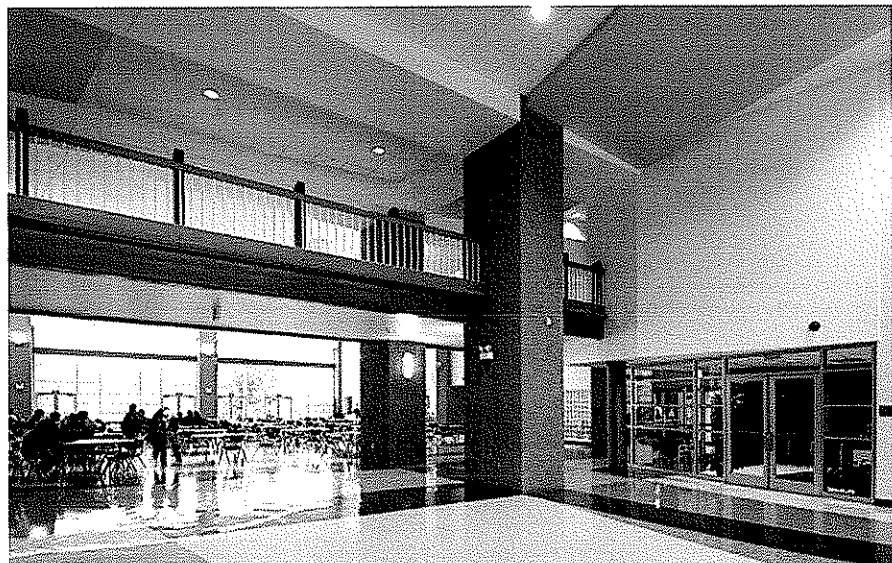
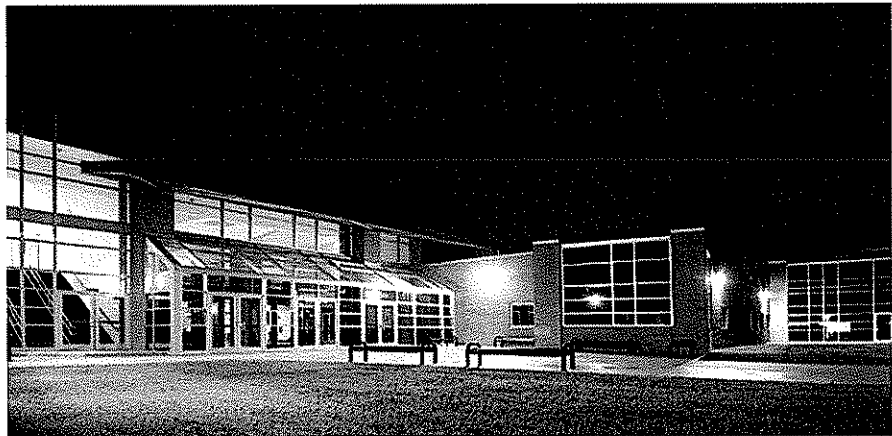
The renovation and additions to St. Albans High School included the razing of about 40% of the existing structure and the construction of 124,000 SF of new construction. The completed facility will house 1050 students, grades 9 thru 12.

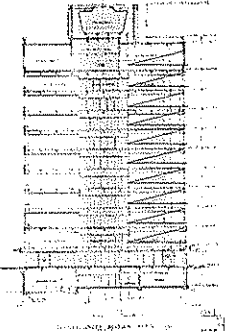
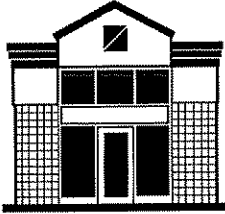


The new facility includes a distance learning center with duplex teleconferencing, and a state of the art media center with technology distribution throughout the entire facility. It also includes complete food service facilities and a commons/dining area, which serves as the focal point for access to the gymnasiums and auditorium.



Size: 172,596 SF
Project Cost: \$24M
Completed: 2003





Renovation Projects

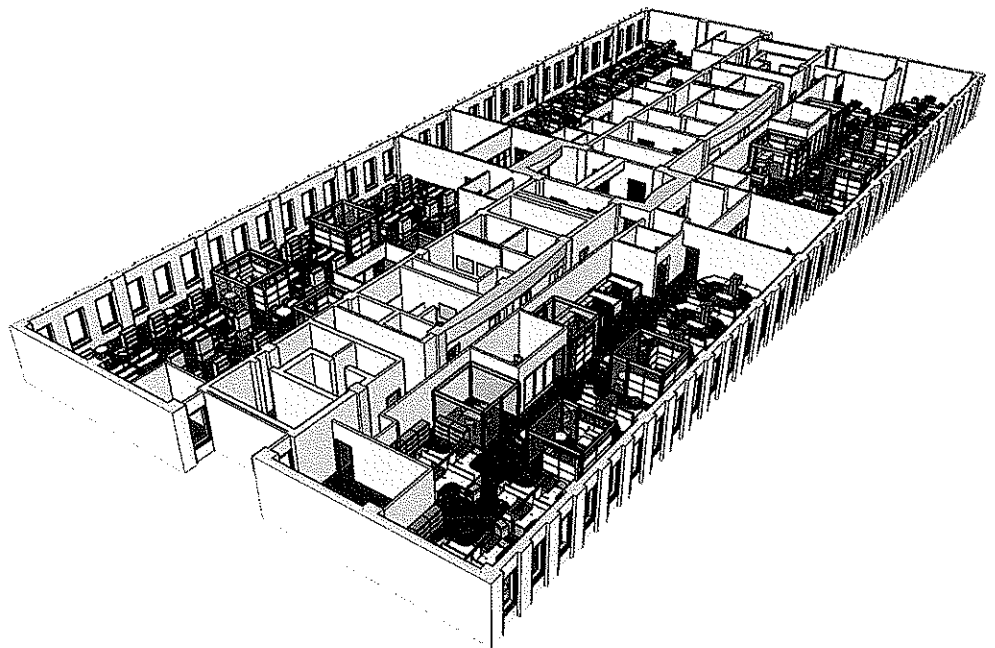
State of West Virginia Capitol Complex Buildings 5, 6, 7 Feasibility Study - Master Plan

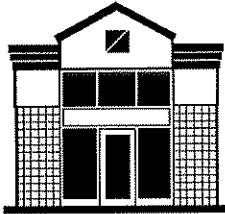
ZMM is currently undertaking an in-depth analysis of Buildings 5, 6, and 7 on the Capitol Campus. The study includes the preparation of as-built plans, as well as an analysis of all building systems, including: Life Safety; Vertical Transportation; Mechanical; Electrical; Data; Façade; Structure; and Roofing. The analysis also includes a study related to potential hazardous materials in the facility.

Once the initial analysis is complete, ZMM will develop several options related to the rehabilitation of the existing facility. Prototypical floor plans are being designed currently as well as major infrastructure and utility upgrades. ZMM is also determining sustainable design principles that will be applicable as the renovations are undertaken.

Additionally, ZMM has commenced with the design of the 10th floor for the office of technology.

Size: 500,000 SF
Cost: TBA
Completed: TBA
Owner: Mr. David Oliverio, Director
General Services Division
1900 Kanawha Blvd., East
Charleston, WV 25305
304.558.3517





Renovation Projects

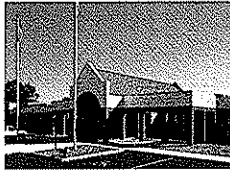
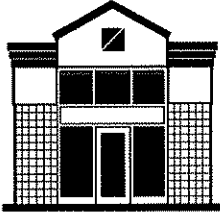
Judge Black Courthouse Annex Parkersburg, WV

The Judge Black Annex project involved renovating an existing commercial building into county office and courtroom space for the Sheriff's Tax Office, Assessor's Office, Prosecuting Attorney's Office, and the Family Court. The design provided both secure and non-secure circulation, while taking advantage of the existing structural configuration to create large open volumes that lend the building prominence.

The interior design utilized rich colors and dramatic visual accents in public areas, with finishes selected for durability. Layered planes of varying colors accent the building's depth, and skylights provide daylight to county staff throughout the renovated office areas. Exterior improvements included the elimination of an existing storefront system as well as a change in the fenestration, to more closely match the existing courthouse and to change the character and typology of the existing facility.

Size: 36,828 SF
Cost: \$3.5M
Completed: 2005
Owner: Mr. Rick Modesitt, Commissioner
The County Commission of Wood County
No. 1 Court Square, Suite 203
Parkersburg, WV 26101
304.424.1984





Correctional Facilities

West Virginia Regional Jails

In 1990, the West Virginia Regional Jail and Correctional Facility Authority awarded the joint-venture team of ZMM/CRA a contract to design a prototype detention facility with the flexibility to meet the long range needs of 10 geographical regions in the State of West Virginia. The prototype building was designed as a 200 bed, 300 bed and 400 bed facility with the ability to add a 100 bed housing pod to each. All services required by the building were designed to accommodate the maximum population.

Unique to the design of the prototype jail is the ability of the staff to fully monitor all inmate movement within the corridor system of the building from a single central control location.

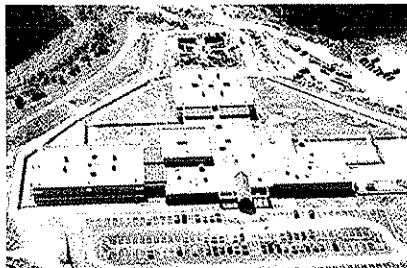
The following systems were designed and installed: integrated security and PA system, closed circuit television, fire alarm system, door access control integrated with security system, cable television and perimeter security system.

The **Central Regional Jail** in Flatwoods, Braxton County, WV, was the first of the prototype jails to be completed. It is a 200 bed medium/maximum security facility of approximately 100,000 SF

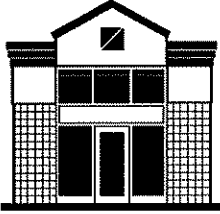
The **South Central Regional Jail**, second of 10 regional jails to be completed, is a 300 bed facility of 140,000 square feet located in the Southridge Business Park, Charleston, West Virginia.

The **Southern Regional Jail** is a 300 bed regional jail of approximately 133,000 SF. The jail has facilities for 96 maximum security inmates with the remaining housing units designed for medium security. This facility is located in Beckley, WV.

The **Northern Regional Jail and Correctional Facility** is a 400 bed combined regional jail and correctional facility of approximately 164,000 SF consisting of 200 beds used by the regional jail and 200 beds used by the West Virginia Department of Corrections. The regional jail section has facilities for 48 maximum security inmates with the remaining housing units designed for medium security. All housing units occupied by the Department of Corrections are medium security.



Southwestern Regional Jail during construction



Juvenile Centers

West Virginia Juvenile Facilities

Following a very successful program of regional jail construction based on ZMM/CRA's prototype design, the West Virginia Regional Jail & Correctional Facility Authority awarded ZMM a contract to design a new prototype for juvenile detention facilities.

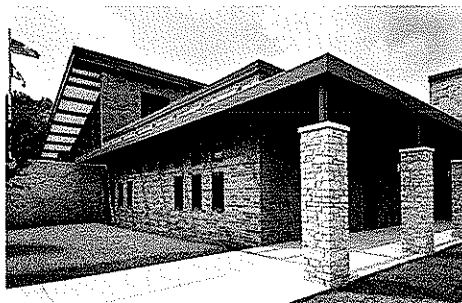
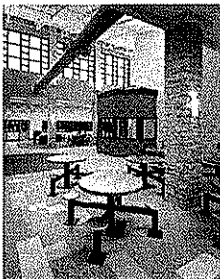
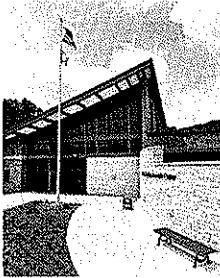
The original prototype has undergone several transformations, including a 2-story design and a prototypical staff-secured design. All of the versions of ZMM's juvenile center prototype are designed to allow safe and effective operation with a small staff.

The **J. M. "Chick" Buckbee Juvenile Center**, located near Romney, Hampshire County, was the first juvenile center bid under the new program of prototype facilities. Scheduled to open in fall 2003, this single-story, 26,500 square foot building houses a complete program of intake, medical care, education, recreation, food service and administration.

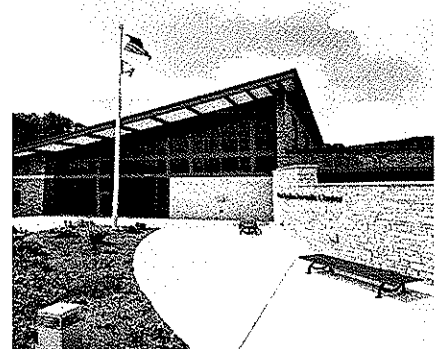
The **James H. "Tiger" Morton Juvenile Center** was designed on the site of the old Kanawha Home for Youth in Dunbar, Kanawha County, West Virginia. Site constraints led to a 2-story variation of the prototype, housing 24 beds in a total building area of 29,000 square feet. This facility, the second of the prototype structures, is scheduled for opening in late 2003.

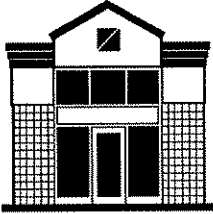
The **Gene Spadaro Juvenile Center**, located in Mount Hope, Fayette County, proved that the prototype concept can be flexible enough to accommodate a dramatic variation in programming. The "softer" approach to this minimum-security facility anticipates program funding through federal IV-E regulations, and relies on staff involvement for security rather than bars and hardware. Completion of this new facility is scheduled for summer 2004.

The **Robert L. Shell Juvenile Center** will be constructed on a site just below the new **Western Regional Jail** in Barboursville, Cabell County, West Virginia. Nearly identical to the Gene Spadaro Juvenile Center, this new center will also use federal IV-E funding and houses minimum-security youth. This facility is scheduled to open in late 2004.



Gene Spadaro Juvenile Center





Award Winning Design



2008

Erma Byrd Center

Beckley, West Virginia

AIA HONOR AWARD West Virginia Chapter
Excellence in Architecture

AMERICAN SCHOOL & UNIVERSITY
Outstanding Building Design



2007

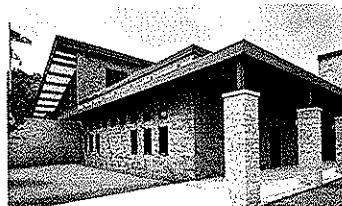
Lincoln County High School

Hamlin, West Virginia

AIA HONOR AWARD West Virginia Chapter
Excellence in Architecture

EDUCATION DESIGN SHOWCASE
Project of Distinction award

AMERICAN SCHOOL & UNIVERSITY
Outstanding Building Design



2006

Gene Spadaro Juvenile Center

Mount Hope, West Virginia

AIA MERIT AWARD West Virginia Chapter
Achievement in Architecture



2004

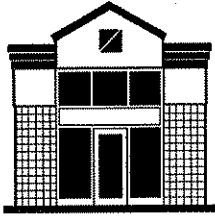
St. Albans High School

St. Albans, West Virginia

IMPACT ON LEARNING AWARD
Effective Transformation

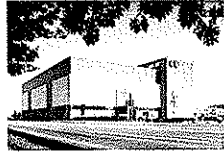
EDUCATION DESIGN SHOWCASE
Outstanding Building Design

AMERICAN SCHOOL & UNIVERSITY
Outstanding Building Design



Additional Award Winning Design

WEST VIRGINIA SOCIETY OF ARCHITECTS Design Honor Awards



Corporate Headquarters Facility
Blue Cross / Blue Shield of West Virginia
Charleston, West Virginia



John XXIII Pastoral Center
Wheeling-Charleston Diocese
Charleston, West Virginia



Corporate Office Building
Contractors' Association of West Virginia
Charleston, West Virginia



One Bridge Place Office Renovation
Fisher-Bryson Properties
Charleston, West Virginia

UNITED STATES NAVY

Admiral's Commendation

Operations Building Alterations
Naval Security Group
Sugar Grove, West Virginia

CONSTRUCTION SPECIFICATIONS INSTITUTE

Honorable Mention

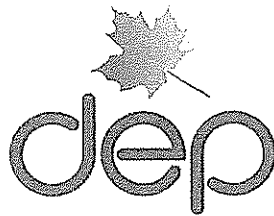
Restoration and Renovation Projects
Cottage Renovations to Federal Prison Camp
Alderson, West Virginia

STONEWALL JACKSON LAKE

Merit Award

Design and Environmental Program
Recreation Area Basic Park
Weston, West Virginia





west virginia department of environmental protection

Public Information Office
601 57th Street, South East,
Charleston, WV 25304

Joe Manchin III, Governor
Randy C. Huffman, Cabinet Secretary
www.wvdep.org

February 21, 2009

Adam R. Krason, AIA, NCARB, LEED AP, Architect
ZMM Architects and Engineers
222 Lee Street, West
Charleston, WV 25302

Dear Mr. Krason,

As Sustainability Officer with the West Virginia Department of Environmental Protection, it is my pleasure to write a letter in support of ZMM Architects and Engineers and their efforts to work with West Virginia organizations committed to improving their built and natural environments and organizational sustainability... or triple bottom line... profit, people, and planet.

The diverse staff at ZMM Architects and Engineers has expert knowledge, skills, and abilities with respect to the United States Green Building Council's Leadership in Energy and Environmental Design® Green Building Rating System™ and about broader sustainability concepts, principles and the environment in West Virginia.

I have worked with Mr. Krason and Ms. Jill Watkins with "Green Building Workshops" and creating a statewide program that builds capacity and provides leadership development opportunities for individuals and organizations embracing sustainability and looking for the complementary relations among the environment, economy and culture I West Virginia. Their inspiring work ethic, wisdom and integrity speak volumes about the manner in which they conduct business and represent themselves throughout West Virginia Communities.

The WVDEP is encouraged by ZMM Architects and Engineers' efforts and how it will lead to eventual Skill Set development and interdisciplinary program enhancements with other sustainability concepts and principles such as:

- Energy and cost efficiency;
- Alternative and renewable energy;
- Sustainable building design, construction, operation and maintenance that supports the United States Green Building Council's Leadership in Energy and Environmental Design® Green Building Rating System™;
- Creation of green businesses and collar jobs; and,
- Others.

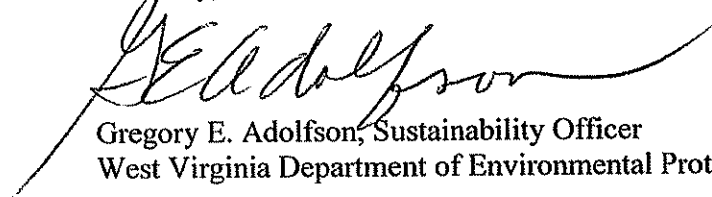
ZMM Architects and Engineers support our capacity building and leadership development activities, and complements and augments WVDEP programs such as:

- Sustainable Communities – a program that targets homeowners, schools, businesses, and community institutions dedicated to energy and water conservation, waste minimization and elimination, pollution prevention, and other sustainability concepts and principles that build sustainable communities... strong local economies, wholesomely vibrant communities, and healthy environments.
- Environmental Excellence – a program that targets regulated and non-regulated organizations in an effort to promote, reward, and encourage superior environmental performance within West Virginia organizations that meet the requirements of program eligibility including an exemplary environmental performance record, commitment to develop and implement an environmental management system, establish environmental performance goals, promote public involvement, and to positively impact the quality of life for all West Virginians by improving the economy, environment, and society through incentives, public participation, innovative technologies, and sustainability concepts. This program is the companion to the United States Environmental Protection Agency's National Environmental Performance Track.
- I Travel Green – a program that targets West Virginia travel and tourism organizations that is an entirely voluntary, affordable program that Registers and Benchmarks travel and tourism organizations that have made a commitment to continually enhance their operations that improve environmental, socio-cultural, and economic performance through evaluating their operations; setting goals, establishing objectives and targets, developing programs; and taking specific actions toward environmental, socio-cultural, and economic sustainability. I Travel Green is designed to support the West Virginia Division of Tourism's "West Virginia Wild and Wonderful" brand, give the state and travel and tourism organizations a marketing edge, promote smart practices, reduce costs, educate travelers and tourists, and protect the beauty and vitality of West Virginia's landscape.

In conclusion, I fully support the efforts of ZMM Architects and Engineers as you seek support for institutionalizing your programs. Any program, that incorporates sustainability concepts and principles and focuses on building capacity and developing leaders in sustainability throughout West Virginia, will benefit our people, our communities, and our overall return on investment. This will support the foundation for building a sustainable future for West Virginia.

Should you have questions, or require additional information, please do not hesitate to contact me at (304) 926-0499 X1332 or gregory.e.adolfson@wv.gov.

Sincerely,



Gregory E. Adolfson, Sustainability Officer
West Virginia Department of Environmental Protection

Promoting a healthy environment.

The Higher Education Foundation

200 MAIN STREET, BECKLEY, WEST VIRGINIA 25801-4613

TELEPHONE 304 929-2010

FACSIMILE 304 929-2009

forwardsww@earthlink.net

January 22, 2008

Mr. Rod Watkins, Vice-President, AAIA, REFP
ZMM, Inc.
222 Lee Street West
Charleston, WV 25302

Dear Rod,

Last week, January 14, 2008, we began the second semester of use of The Erma Byrd Center at the Public Higher Education Center campus, Beaver, West Virginia. This endeavor has been a significant triumph for our area and is the first of its kind in West Virginia. Seven public colleges/universities have come together in a single center in a spirit of cooperation rather than competition.

This is a note to thank you and the ZMM family for the critical role with excellence that you played in this project. Initially, we had worked with another architect in Pittsburgh, but unfortunately a series of events made continuance with them impossible. We were then met with crucial deadlines for reformulating an entire building with a very constricted timeline and an equally restricted budget. We turned to ZMM.

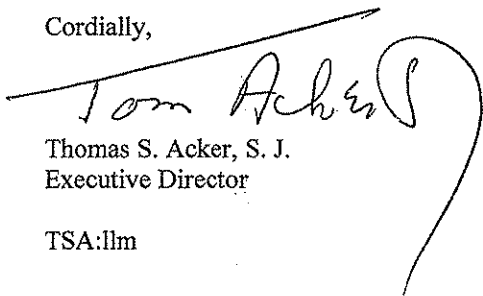
Our contract with you began in December, 2005. We had to complete architectural plans, bid the building, secure a contractor, and begin construction by July, 2006, in order to meet an opening date of August, 2007. ZMM was the perfect partner with us as we forged a new building on a yet raw campus and made it work.

The building designed by ZMM was elegant, yet simple. The budget parameters were met, including a striking view from I-64. The building design impresses all.

Radford & Radford was chosen as the builder, and ZMM worked with them expeditiously and effectively. The architectural plans were exceptionally clean, and the few change orders were almost entirely initiated by the owner as some afterthoughts developed. The project was completed on time, and the first semester was excellent. Over 131 classes were taught engaging 1,990 students.

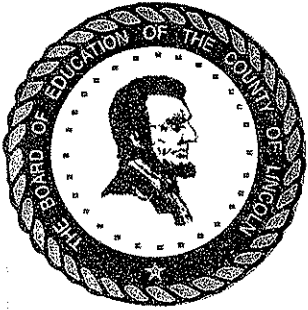
I simply wanted to send you this note of thanks for accepting a very daunting task, completing it with excellence, maintaining the very restricted budget, and making this whole project successful. We are now looking forward to a second building, and while we probably need by state law to seek architectural services through an RFP, I hope that ZMM will engage in the process. It would be to our benefit if ZMM were the winning architects. You have my highest recommendation and most sincere thanks.

Cordially,



Thomas S. Acker, S. J.
Executive Director

TSA:llm



Lincoln County Schools

David L. Roach
SUPERINTENDENT

Jeff Huffman
ASSISTANT SUPERINTENDENT

January 22, 2008

To Whom It May Concern:

As the previous superintendent of Cabell County Schools and present superintendent of Lincoln County Schools, I am in the unique position to comment on the services of ZMM, Inc., Architects and Engineers. They provided professional services in both of these counties and I found their services in both counties to be of the highest quality.

I have found, through my experiences with ZMM, that their services are equivalent to having additional employees of the school system. I base this statement on the fact that their representatives consistently monitor budget expenditures in order to stay within the project budget. Change orders are minimal and always justified. ZMM is present and accessible before, during and after project completion to assure the interests of the school system are being met. I particularly appreciate their support in dealing with contractors who may have remaining obligations or product deficiencies that need to be resolved following project completion.

Simply stated, ZMM works to assure that the interests of the client are met and refuses to bow to contractors by accepting less than quality work. I believe this is a rare quality and makes ZMM an elite company.

Sincerely,

A handwritten signature in cursive script that reads "David L. Roach".

David L. Roach
Superintendent of Schools