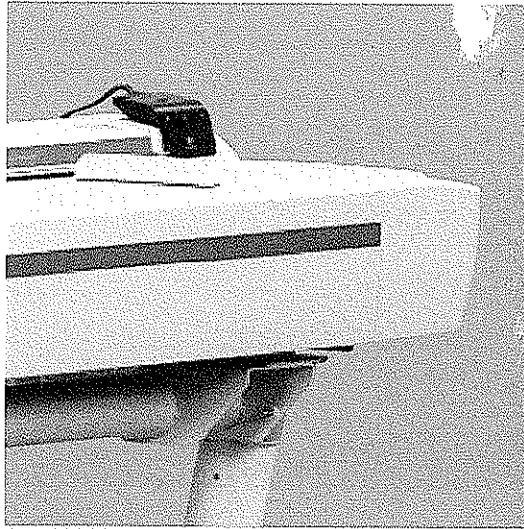


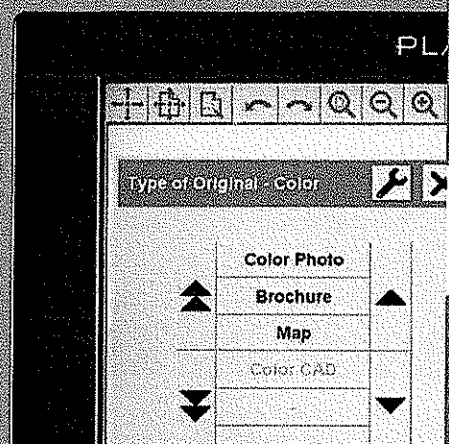
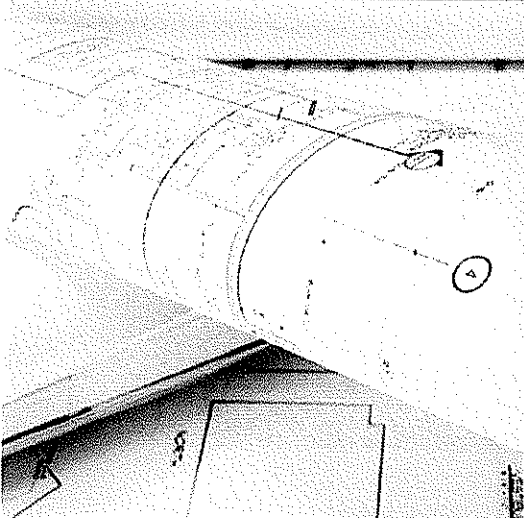
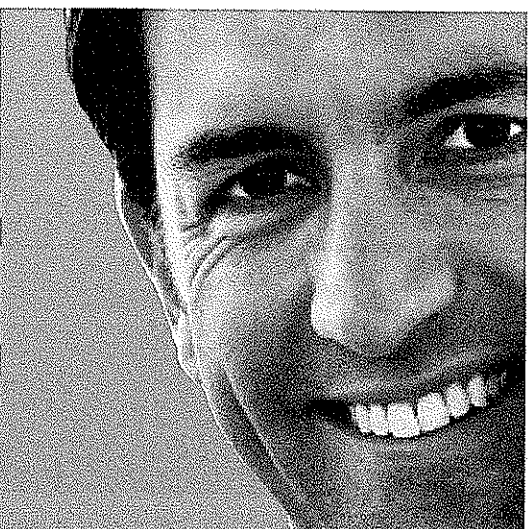
Ricoh Wide Format Color Scanner
Setting the Standards for
Wide Format Imaging

RICOH

RECEIVED
2008 NOV 26 A 10:19
IMAGING DIVISION
STATE OF WY

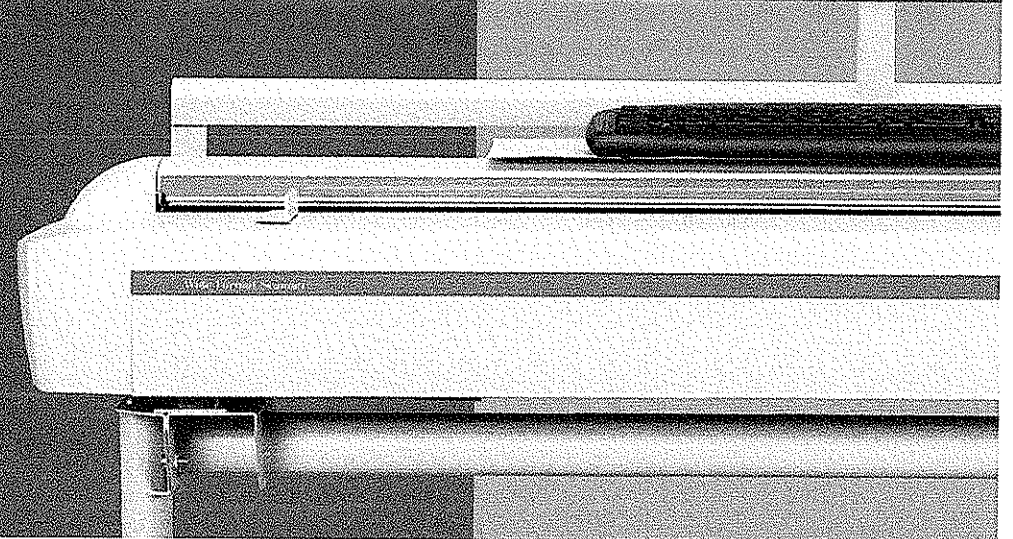


fast



precise

color



Ricoh Wide Format Color Scanner

Capture all the Details—In Color

Changes and additions are a fact of life with wide format documents. Capture them fast in full color, while handling high-speed monochrome scanning and printing needs at the same time. The new RICOH® Wide Format Color Scanner captures "as-builts" and on-site changes—or integrates satellite imagery into your documents. Whether it's architectural drawings, sepias, blueprints, detailed maps, folded or wrinkled documents, or oversized drawings, photos or posters, you're assured unrivaled speed and image quality.

Accelerate Your Workflow

Simply put, the Ricoh Wide Format Color Scanner gives you more time to focus on your work.

- Eliminate waiting time with the high-speed, 12 inches-per-second (ips) monochrome scan speed and .6 inch-per-second (ips) color scan speed (48-bit).
- Scan thick documents you never thought possible: up to .6" thick. Capture information from posters, presentation boards and other thick working documents.
- Increase productivity by eliminating skewed documents, cut scanning times, and avoid both image distortion and damage to fragile originals. The All-Wheel-Drive Paper Transport System keeps a uniform hold on your documents across the width of the paper, for a straight paper path and trouble-free scanning.
- Pre-scan, crop images and edit copy before sending to file or output, short-cutting the design process and saving time.

Sharp, Realistic Detail

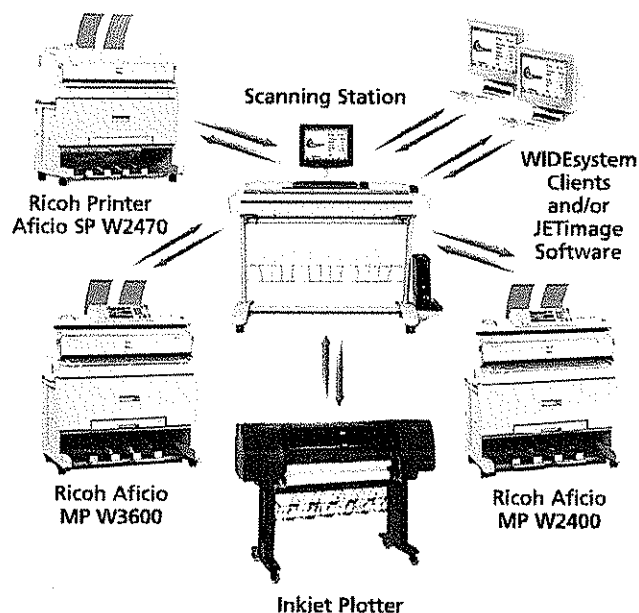
Create the sharpest, most accurate CAD or GIS reproductions of any wide format imaging system available today.

- Capture extraordinarily accurate 600 dpi images with 48-bit color and 16-bit monochrome data.
- Eliminate the background artifacts and "noise," common problems with GIS imaging systems, with the advantages of CCD technology: superior background suppression, color-matched fluorescent lamps, high-quality camera lenses and a high-definition CCD array.
- Enlarge your work to highlight details and create display-size, presentation-quality documents.
- Accurately capture hard-to-scan documents, such as folded, wrinkled or curled drawings from worksites or storage.
- Gain the advantage of the most accurate point-to-point pixel distance in the industry produced by the Accurate Lens Enhancement (ALE) Technology.

Simple Touch-Screen Operation

Scanning with the Ricoh Wide Format Color Scanner has never been easier.

- Easily program and select job print parameters with the LCD touch-screen control panel.
- Free up the printing queue by using Scan-to-File to scan your documents and then print them later.
- Connect the scanner seamlessly and easily within your network with the included WIDESystem multifunction software, which manages communication between the scanner and the controller PC.
- Simplify operation with the JETimage^{NET} multifunction software which allows you convenient, programmable action buttons to scan, copy, print and even track your projects over time.
- Perform scanning operations across your LAN or the Internet with Scan-to-Net, which allows you to scan directly to anyone on your network or back to your own PC.



Scanner Specifications

Configuration	Stand-alone
Scanning Process	4-channel CCD camera (x3)
Warm-Up Time	Less than 120 seconds
First Copy	34 seconds (E-Size)
Scanning Speed	12 ips Monochrome, 200 dpi/6 ips Color, 200 dpi
Scan-to-File Speed	2.9 sec. Monochrome/35 sec. Full-Color (D-Size)
Optical Resolution	600 dpi, Max. 9600 dpi (interpolated)
Color Levels	48-bit color
Media Maximum Thickness	0.6"
Original/Copy Size	Maximum: 36"/Document size: up to 44"
Power Source	120V 15A 60Hz
Dimensions (WxDxH)	63" x 26.7" x 18.1" (Mainframe only) 61.8" x 25.5" x 20.4" (Stand)
Weight	187.3 lbs. (Mainframe only) 143.3 lbs. (Stand)
Supported File Formats	PDF, TIF, CALS, HP-RTL, JPEG
Network Protocol	TCP/IP (IPv4/IPv6), IBX/SPX, AppleTalk
Operating System	Windows 95/98/Me, Windows NT 4.0, Windows 2000, Windows XP, Windows 2003 Server, Mac OS 6-10.1 or later
Maintenance Interface	Automatic color calibration and camera alignment
Accuracy	Hi-Speed USB 2.0 0.1%, +/- 1 pixel, between any 2 points on document

Recommended PC Configuration (not supplied)

CPU	Dell Optiplex 755 1.66GHz Intel Core 2 Duo 1024 MB RAM 80 GB SATA 3 GB/s HDD CD/DVD Optical Drive 10/100 Ethernet Hi-Speed USB 2.0 Windows XP Pro
Monitor	The monitor used is either a 15" or 17" touch-screen panel and must support a 4" VESA mount. The monitor shouldn't exceed 13.5"x15.7" (HxW) as this will prevent the original guide from opening for maintenance.
Keyboard and Mouse	Logitech Wireless Desktop EX110

RICOH
www.ricoh-usa.com

Ricoh America Corporation, One Delltek Place, Way Cashier, NJ 07095
Ricoh® is a registered trademark of Ricoh Company Ltd. Windows® and Windows® 95/98/Me/2000/XP/Server 2003 are registered trademarks of Microsoft Corporation. Macintosh® is a registered trademark of Apple Computer, Inc. All other trademarks are the property of their respective owners. Print speed may be affected by network, application or PC performance. Specifications and external appearances are subject to change without notice. Products are shown with optional features.

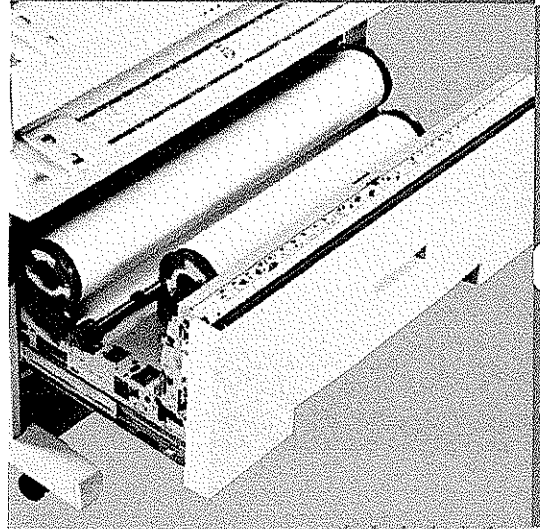
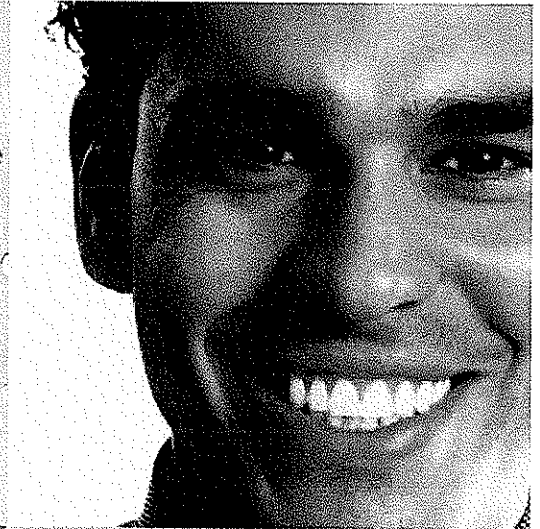
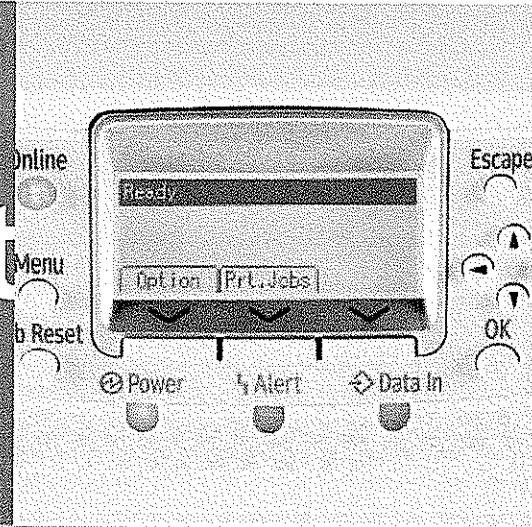
© Printed in U.S.A. on recycled paper because Ricoh cares.

R2738

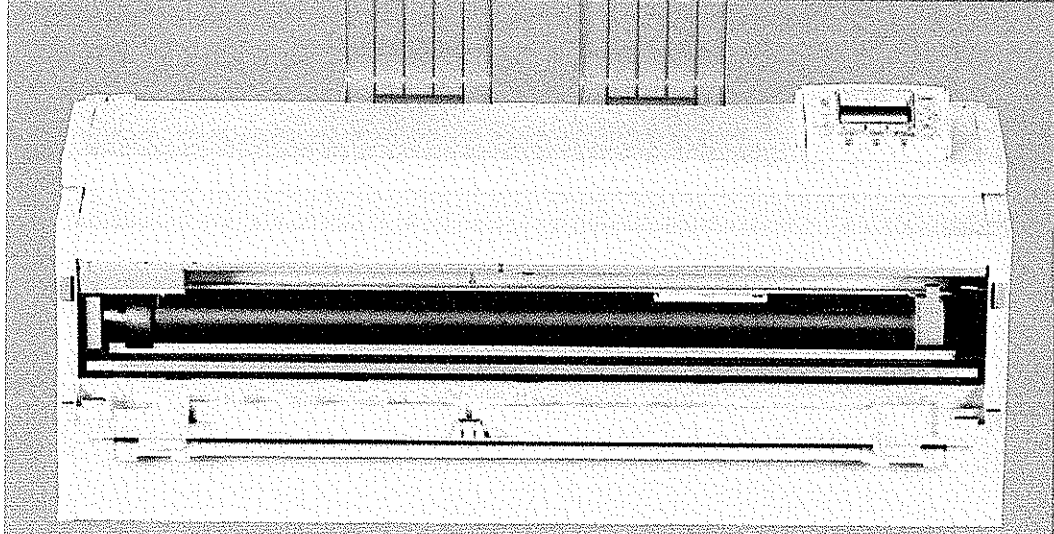
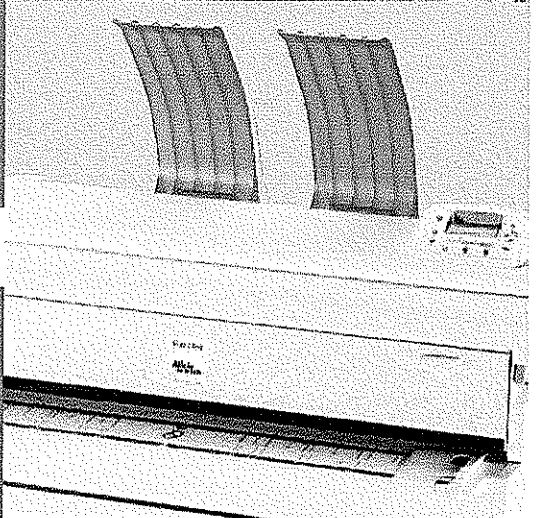
Ricoh Aficio SP W2470
Wide Format
A Revolution In Wide Format
Quality Printing.

RICOH

compact



economical



quality

State-of-the-art capabilities in a compact, economical unit.

When you need high quality collated printouts and you need them now, the RICOH® Aficio® SP W2470 Wide Format Digital Imaging System is the ideal solution. Compact, affordable, state-of-the-art, it delivers all the capabilities you need to improve your competitive edge while keeping your costs down.

Simplicity at every touch point.

The Ricoh Aficio SP W2470's single footprint requires less floor space while offering a simple, convenient path to extremely high quality printed documents.

- Access consumables quickly and easily, thanks to the full-front clamshell design.
- Handle large print runs with the 50-sheet top output and 40-sheet bottom stackers.
- Switch paper easily, thanks to the flange-based roll-paper changing and optional cassette tray (up to 12" x 18" paper).
- Store files and projects in progress up to 180 days with the 80 GB HDD and access them instantly at the printer or from your PC using WebImageMonitor.
- Improve productivity by stamping documents with dates, page numbers, and headers and footers prior to printing, storing or retrieving them for reprinting.

Razor sharp prints in an instant.

Outsourcing your wide format prints or sending documents to a central plotter is no longer necessary with the economical, compact Ricoh Aficio SP W2470.

- Output high quality documents with 600 dpi resolution at 4.5 prints per minute.
- Create vivid details and fills with 2 levels of grayscale.
- Use advanced IT technology—including standard NIB and up to 1000Base T Gigabit Ethernet, USB, and wireless options—to boost your productivity and improve workflow.

The embedded controller advantage.

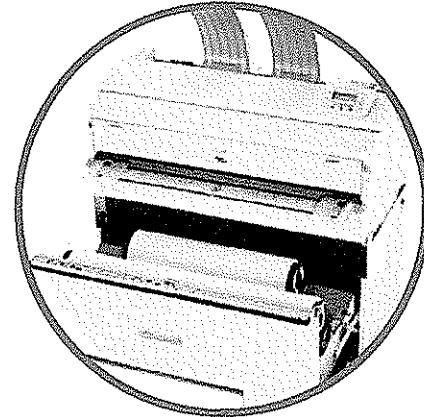
Ricoh's unique open architecture controller is packed with productivity-boosting power.

- Handle common file formats in your industry—as well as Windows, Postscript and HDI print drivers.
- Use the simple, intuitive Web Printing GUI to access network directories/files, build print jobs and send them to the printer IP address for fast, versatile printing from anywhere.
- For added convenience, you can print immediately, print a sample document, hold the print job on the hard drive for print on demand, or password protect a document for authorized printing of the job.

Making security a top priority.

Multiple levels of security ensure peace of mind.

- Password protect your documents with Windows Authentication.
- Ensure document protection during data transmission with the data encryption tool.
- Prevent unauthorized recall of sensitive data by completely erasing it from the hard drive with optional Data Overwrite Security.



Engine Specifications

Configuration	Desktop
Printing Process	Electrophotographic printing
Paper Source	2 Roll Paper Feed Table (required)* 250-Sheet Paper Cassette Tray (optional)
Warm-Up Time	Less than 120 seconds
First Copy	34 seconds (E-Size)
Printing Speed	4.5 ppm; 2.36 ips (D-Size)
Resolution	600 dpi x 600 dpi
Grayscale Printing	2 levels
Cutting Method	Synchronized, preset cut, variable cut
Memory Capacity	512 MB
Hard Drive Capacity	80 GB
Print Exits	Top: 50 sheets (Plain Paper D-Size LEF) Bottom: 40 sheets (Plain Paper E-Size SEF)
Power Source	120V 15A 60Hz
Dimensions (WxDxH)	42.5" x 25" x 21" (Mainframe only) 42.5" x 28.3" x 48.5" (Mainframe w/2 roll feed table)
Weight	235 lbs. (Mainframe only) 389.3 lbs. (Mainframe w/2 roll feed table)
Supported Drivers	RPCS, PostScript 3 (emulation), HDI
Supported File Formats	PDF, HP-GL 1/2, TIFF, CALS, HP-RTL
Network Protocol	TCP/IP (IPv4/IPv6), IBX/SPX, AppleTalk
Operating System Driver Support	RPCS: Windows 95/98/Me, Windows NT 4.0, Windows 2000, Windows XP, Windows 2003 Server PostScript: Windows 95/98/Me, Windows NT 4.0, Windows 2000, Windows XP, Windows 2003 Server Mac OS 6-10.1 or later
Supported AutoCad Version (HDI Driver)	AutoCAD2000, 2000i, 2002, 2004, 2005, 2006, 2007

*2 Roll Paper Feed Table must be ordered with the mainframe.

Print Controller Features

- Auto Paper Select
- Border Setting
- Language Setting
- Limitless Paper Feed
- Locked Print
- Magnification, 25%-400%
- Media Selection
- Mirror Setting
- Multi-Levels of Security (LDAP, SSL, User Authentication, Windows Authentication, PDF Encryption, Data Overwrite Security option)
- Multiple Print Sets
- Output Tray Select
- Pen Setting
- Remote Print via Internet (IP Address Direct Printing)
- Roll Select
- Sample Print
- Set Up Launcher
- Stamp Setting
- Transparency Mode
- 80 GB Document Server

RICOH
www.ricoh-usa.com

Ricoh Americas Corporation, Five Dedrick Place, West Caldwell, NJ 07006

Ricoh® and the Ricoh Logo are registered trademarks of Ricoh Company, Ltd. Windows® and Windows® 95/98/Me/NT4.0/2000/XP are registered trademarks of Microsoft Corporation. Macintosh®, Mac OS and AppleTalk® are registered trademarks of Apple Computer, Inc. Adobe® and PostScript® are registered trademarks of Adobe Systems, Inc. PCL® is a registered trademark of Hewlett-Packard Company. RICOH is a trademark of Ricoh Company, Ltd. All other trademarks are the property of their respective owners. Print speed may be affected by network, application or PC performance. Specifications and external appearances are subject to change without notice. Products are shown with optional features.

© Printed in U.S.A. on recycled paper because Ricoh cares.

R2624



WV Div of Highways Engineering - SP W2470 / Steve Kimble

Equipment

Qty	Description	Price	Ext Price
12	Aficio SP W2470 Wide Format	\$2,040.72	\$24,488.64
12	Roll Feeder Type 240B	\$629.26	\$7,551.12
12	Paper Cassette Type 240	\$96.27	\$1,155.24
12	Rear Stacker	\$75.67	\$908.04
12	DataOverwriteSecurity System (DOSS) Type D	\$84.24	\$1,010.88
12	Roll Holder Type A	\$32.34	\$388.08
12	Gigabit Ethernet Board Type A	\$92.51	\$1,110.12
12	Wide Format Print Network Connect	\$250.00	\$3,000.00
12	Labor, Parts, Black Ink Toner Included: Inclusive BLACK AND WHITE COPY CHARGE OF \$0.0831 IN EXCESS OF 3510.0 PER QUARTER	\$1,678.00 Per year	\$20,136.00 Per Year
12	wideformat color scanner 10017FNG	\$78,000.00	\$78,000.00
12	Dell Optiplex 755 with 15" touchscreen monitor	\$19,272.00	\$19,272.00
1	Shipping/Handling	\$2,520.00	\$2,520.00

Preventive maintenance includes toner, parts and labor. 2hr. call back 8hr response time
Quote includes installation, and training.

Finance Options

	Option 1	Option 2	Option 3
Term	36	60	
Lease Type	FMV	FMV	Cash
Service	\$1,678.00	\$1,678.00	\$20,136.00
Total Payment	\$5,494.62	\$4,103.22	\$145,600.17

Submitted by

Name:

James Mills
James Mills

Phone Number:

304-342-4099

Email:

james.mills@ricoh-usa.com

Custom prices and order totals do not include required taxes. Taxes will be determined and added to the invoice. This proposal is valid for thirty days, unless issued in a shorter period. Quotes are non-binding and for planning purposes only. Orders are subject to credit approval and acceptance by Ricoh.

Attachment 1: Cost Sheet Data

COST SHEET

QTY	DESCRIPTION	PURCHASE COST	MAINTENANCE*	TOTAL
11	Color Plotters (2.1)	N/A	N/A	N/A
11	Monochrome Plotters (2.2)	7938.26	1678.00	9616.26
12	Scanners (2.3)	6500.00	585.00	7085.00
11	Controllers (2.4)	included	-	-
	Hardware Sub-Total	14438.26	2263.00	16701.26

* Annual Maintenance as described in 3.2 and 3.3.

SERVICES	COST
Installation (1.3)	included
Training (3.4)	included
Services Sub-Total	N/A

QTY	DESCRIPTION	UNIT PRICE	TOTAL
11	Toner Cartridges for the Monochrome Plotters	*178.08	178.08
11	Color Cartridges for the Color Plotters	N/A	
11	Rolls of Paper Media (150' x 34") for the Monochrome Plotters	44.00 per Roll 34" x 500'	
11	Rolls of Paper Media (150' x 34") for the Color Plotters	N/A	
12	Copies of the Color Plotter User Manual*	N/A	
12	Copies of the Monochrome Plotter User Manual*	included	
12	Copies of the Scanner User Manual*	included	
12	Copies of the Controller User Manual*	included	
	Start-up Supplies Sub-Total		

*Note, the User Manuals may be in either a printed form or in the 'pdf' format.
 * price is purchased, Toner is included in the maintenance.

DESCRIPTION	TOTALS
Hardware Sub-Total	14438.26
Services Sub-Total	2263.00
Start-up Supplies Sub-total	included
TOTAL	16701.26

NOTE: The State may choose to accept a trade-in for the equipment to be replaced, and may subtract it from the Total above for evaluation purposes. If you offer a trade-in, the value is \$ None.

STATE OF WEST VIRGINIA
Purchasing Division**PURCHASING AFFIDAVIT****VENDOR OWING A DEBT TO THE STATE:**

West Virginia Code §5A-3-10a provides that: No contract or renewal of any contract may be awarded by the state or any of its political subdivisions to any vendor or prospective vendor when the vendor or prospective vendor or a related party to the vendor or prospective vendor is a debtor and the debt owed is an amount greater than one thousand dollars in the aggregate.

PUBLIC IMPROVEMENT CONTRACTS & DRUG-FREE WORKPLACE ACT:

West Virginia Code §21-1D-5 provides that: Any solicitation for a public improvement construction contract shall require each vendor that submits a bid for the work to submit at the same time an affidavit that the vendor has a written plan for a drug-free workplace policy in compliance with Article 1D, Chapter 21 of the West Virginia Code. A public improvement construction contract may not be awarded to a vendor who does not have a written plan for a drug-free workplace policy in compliance with Article 1D, Chapter 21 of the West Virginia Code and who has not submitted that plan to the appropriate contracting authority in timely fashion. For a vendor who is a subcontractor, compliance with Section 5, Article 1D, Chapter 21 of the West Virginia Code may take place before their work on the public improvement is begun.

ANTITRUST:

In submitting a bid to any agency for the state of West Virginia, the bidder offers and agrees that if the bid is accepted the bidder will convey, sell, assign or transfer to the state of West Virginia all rights, title and interest in and to all causes of action it may now or hereafter acquire under the antitrust laws of the United States and the state of West Virginia for price fixing and/or unreasonable restraints of trade relating to the particular commodities or services purchased or acquired by the state of West Virginia. Such assignment shall be made and become effective at the time the purchasing agency tenders the initial payment to the bidder.

I certify that this bid is made without prior understanding, agreement, or connection with any corporation, firm, limited liability company, partnership or person or entity submitting a bid for the same materials, supplies, equipment or services and is in all respects fair and without collusion or fraud. I further certify that I am authorized to sign the certification on behalf of the bidder or this bid.

LICENSING:

Vendors must be licensed and in good standing in accordance with any and all state and local laws and requirements by any state or local agency of West Virginia, including, but not limited to, the West Virginia Secretary of State's Office, the West Virginia Tax Department, West Virginia Insurance Commission, or any other state agencies or political subdivision. Furthermore, the vendor must provide all necessary releases to obtain information to enable the Director or spending unit to verify that the vendor is licensed and in good standing with the above entities.

CONFIDENTIALITY:

The vendor agrees that he or she will not disclose to anyone, directly or indirectly, any such personally identifiable information or other confidential information gained from the agency, unless the individual who is the subject of the information consents to the disclosure in writing or the disclosure is made pursuant to the agency's policies, procedures and rules. Vendors should visit www.state.wv.us/admin/purchase/privacy for the Notice of Agency Confidentiality Policies.

Under penalty of law for false swearing (*West Virginia Code* §61-5-3), it is hereby certified that the vendor acknowledges the information in this said affidavit and is in compliance with the requirements as stated.

Vendor's Name: Ricoh Business SolutionsAuthorized Signature: Joe E. MillsDate: 11/21/08