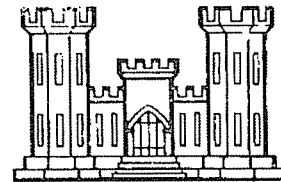


Expression of Interest
for

The WV Army National Guard



RECEIVED

2008 APR -9 A 9:44

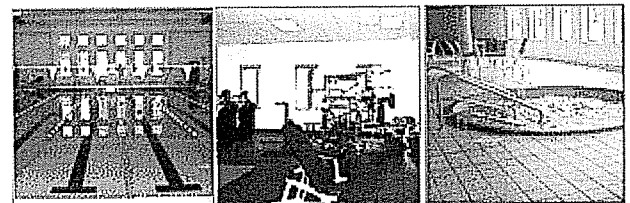
PURCHASING DIVISION
STATE OF WV

ZMM

Architectural &
Engineering Services

for

A Multi-Purpose
Building, Camp Dawson



Adam R. Krason, AIA, NCARB, LEED AP
ark@zmm.com



222 Lee Steet West
Charleston, West Virginia 25302
304.342.0159 voice • 304.325.8114 fax

ARCHITECTS & ENGINEERS

Steve Branner, AIA, NCARB, Principal
steve@zmm.com



222 Lee Steet West
Charleston, West Virginia 25302
304.342.0159 voice • 304.325.8114 fax

ARCHITECTS & ENGINEERS

April 9, 2008



ARCHITECTS & ENGINEERS

April 8, 2008

Mr. John Abbott, Buyer
Department of Administration, Purchasing Division
Building 15
2019 Washington Street, East
Charleston, West Virginia 25305-0130

**Subject: Camp Dawson Multi-Purpose Building
West Virginia Army National Guard
Requisition #DEFK8179**

Dear Mr. Abbott:

ZMM is pleased to submit the attached information to demonstrate both our experience and our capability to provide professional architectural and engineering services for the Camp Dawson Multi-Purpose Building for the West Virginia Army National Guard (WVARNG). We are confident that our recent experience working with the WVARNG, as well as our experience designing athletic and recreational facilities for many of our educational clients and the YMCA, makes ZMM a great partner in the planning and design of this new facility.

An organization of creative professionals with the common interest of working with our clients to design and engineer innovative and cost effective buildings, ZMM has the in-house capability (35 full-time employees) to deliver the professional services necessary to plan, prepare construction documents, and provide construction administration services for the Multi-Purpose Building. Please note that as on several recent projects completed for the WVARNG, ZMM will collaborate with Capitol Engineering, Inc. (CEI) for site and civil design on this project. CEI has been a critical team member that has demonstrated both client responsiveness and technical excellence.

Thank you for taking the time to review the attached brochure, which includes (Section 1) a detailed statement of project understanding that discusses important design characteristics of successful recreation and multi-purpose facilities. We look forward to meeting with you in the near future to review our qualifications, and to discuss your project in more detail.

Respectfully submitted,

ZMM, Inc.

A handwritten signature in black ink, appearing to read 'A.R. Krason', written over a horizontal line.

Adam R. Krason, AIA, NCARB, LEED-AP
Project Manager

Table of Contents

Cover

Cover Letter

Table of Contents

1. Project Understanding

2. ZMM History and Professional Services

3. Relevant Projects:

- Lincoln County Comprehensive High School
- Regional Training Institute, Camp Dawson
- St. Albans High School
- Greenbrier East High School
- Erma Byrd Center
- Dow Plant Headquarters
- Armed Services Reserve Center, Camp Dawson
- Glen Jean Armed Forces Center
- Logan-Mingo Readiness Center
- CFMO
- Judge Black Courthouse Annex

4. ZMM Team:

- Steve Branner, AIA, NCARB, Principal
- Adam R. Krason, AIA, NCARB, LEED AP
- Robert C. Doeffinger, PE, Principal
- David E. Ferguson, AIA, REFP, Principal
- Rod Watkins, AAIA, REFP, Principal
- Steve Cook, PE
- Robert M. Fuller, CEI Principal

5. Award Winning Design:

- Erma Byrd Center
- Lincoln County High School
- Gene Spadaro Juvenile Center
- St. Albans High School

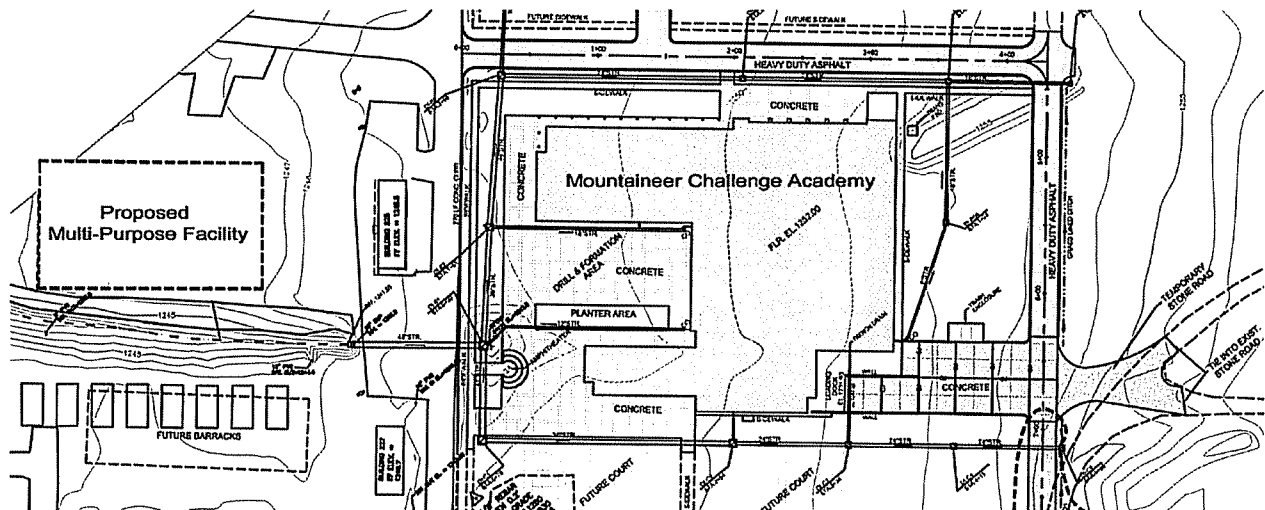
6. Reference Letters:

- The Wood County Commission
- Father Tom Acker - The Higher Education Foundation
- David Roach, Superintendent - Lincoln County High School



Project Understanding: WV Army National Guard Multi-Purpose Building

The description of the multi-purpose building states that “The facility will be a multi-use facility with offices, conference room, locker room, shower facilities, and large open space (gymnasium).” Due to the variety of training functions at Camp Dawson, and the location of the proposed facility (near the Mountaineer Challenge Academy), as well as the program



Proposed Multi-Purpose Building Location

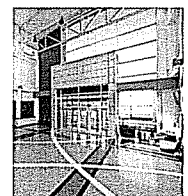
description, it appears that the relevant building typology would be a recreation or fitness center.

Typical facility planning for a recreation center recommends 10-13 GSF per student (or occupant). Weight and fitness areas should include 1-2 NSF per occupant, while multi-purpose or meeting rooms should be programmed to include 0.5-1 NSF per occupant (per Brailsford and Dunlavy).

The design and planning of recreation facilities have undergone a significant shift over the last several years. Many traditional recreation centers included a gymnasium with an oval track (or an elevated track) that surrounded the court. Locker rooms were utilitarian, and fitness areas were often simple boxes that housed the weight lifting and cardio-vascular equipment. Modern facilities focus on wellness, and often utilize “branding” (using a unifying theme to connect the various building functions). The design of these modern recreation centers typically includes the following features:

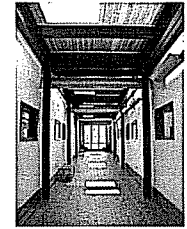
- **Lobby/Entrance:**

Many recreation centers include a dramatic entry with a central “hub” that includes gathering spaces, a café area with healthy foods/beverages, study and meeting areas, all with views of the fitness activities that are occurring.



- **Circulation:**

Clear and open circulation is provided. Typical corridors are avoided, and natural lighting and views are introduced where possible. Clear and vibrant signage is also an important component of the circulation system.



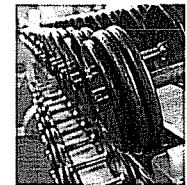
- **Track:**

The track should meander throughout the facility and offer views to multiple activities as well as the outdoors. This makes the walking/jogging experience more enjoyable and less repetitive. The new track at the recreation building at Marshall University is designed to take the students through the indoor aquatic center – via a large glass tube!



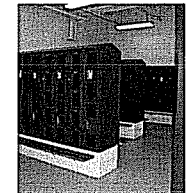
- **Fitness Areas:**

Modern fitness areas typically offer views to the outdoors and introduce daylight. Fitness areas are also flexible, allowing separation of various types of users and activities – while staying visually connected.

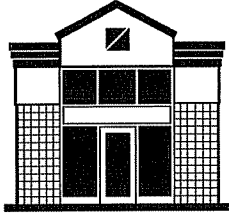


- **Locker Rooms:**

Locker room facilities are typically becoming more private. Many locker rooms also include a lounge area with flat screen televisions and upgraded finish materials.



The proposal request for the multi-purpose building notes a need for a “unique entry,” which closely relates to these modern principles of recreation center design. The other features, including the more irregular track design, and access to views of the outdoors and various fitness activities could be accommodated in a well planned facility without increasing project complexity or impacting the project budget.



HISTORY & PHILOSOPHY OF ZMM

Ray Zando, Ken Martin and Monty Milstead established the Charleston, West Virginia based Architectural and Engineering firm of Zando, Martin and Milstead in 1959 with a staff of five people. The firm obtained an early foothold in the professional services sector in the state and grew in both size and stature. Mr. Steven Branner, a recent graduate of the University of Cincinnati, joined the firm in 1967 as a project architect. Mr. Robert Doeffinger obtained a B. S. degree in Mechanical Engineering from West Virginia University and an M. S. degree in Architectural Engineering from The Pennsylvania State University before joining the firm in 1976.

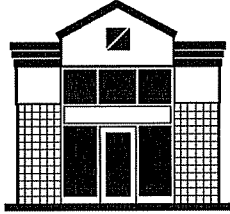


Mr. Zando, Mr. Martin and Mr. Milstead, reaching retirement age, transferred the ownership of the firm to Mr. Branner and Mr. Doeffinger in 1986 and they guided and expanded the firm to its present size of approximately 35 people. Recently, Dave Ferguson and Rod Watkins have joined in ownership of the firm.



The philosophy of ZMM was established early on by the original partners and continues today due to careful selection of contemporaries. At ZMM we are proud of our heritage of fine architecture, engineering and client service. This pride shows in everything we do, from the way we interface with clients to the way we delineate our designs.



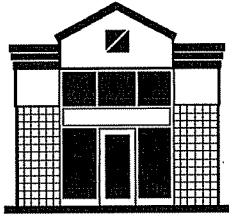


HISTORY & PHILOSOPHY OF ZMM

Since the beginning, ZMM has been dedicated to the integrated approach to building design. The inclusion of engineering services (civil, mechanical, electrical and structural) makes ZMM unique among architectural firms and fulfills the needs of clients for single point responsibility. More importantly, an integrated approach provides better coordinated, accurate, and concise documents. ZMM's commitment to clients is to provide the highest quality professional services available. In order to maintain this high level of quality, we strictly conform to the Quality Assurance Program, a unique feature of ZMM.

We work hard at staying generalists, while, by virtue of maintaining a practice for over forty years, having extensive experience in different building types. We approach each project as a unique opportunity and execute each design accordingly. Nothing is done without our full, professional attention. ZMM has a demonstrated record of success in the specialization of architecture and engineering.



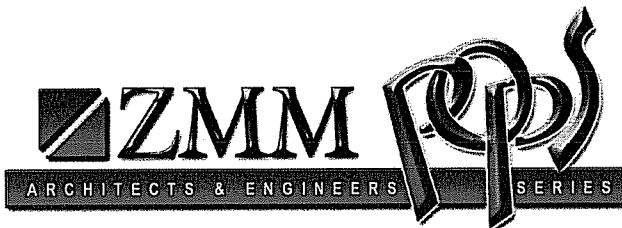
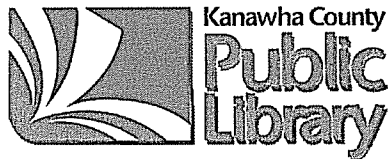


HISTORY & PHILOSOPHY OF ZMM

COMMUNITY SUPPORT

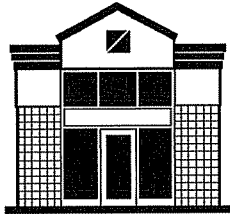
In addition to our design efforts, **ZMM** has been supportive of institutions and organizations that contribute to the cultural and educational landscape in West Virginia.

ZMM offers financial support to several community and state-wide institutions that reflect the superior quality that we strive to achieve on each of our projects. The following organizations also impact the educational environment through their support of local artisans, performances, broadcasts, and community service:



West Virginia Symphony Orchestra





Professional Services

Since its inception, ZMM has been dedicated to the integrated approach to building design (providing full architectural and engineering services in-house) that is unique to architectural firms of our size. Our past successful experience demonstrates that providing multi-disciplined services within one organization results in a fully coordinated project. As shown below, ZMM has the qualified professionals available to provide services throughout the duration of a project from the initial planning phases through post-occupancy evaluations and beyond.

Additionally, ZMM is constantly working to improve the services we offer by addressing emerging and evolving trends that impact the design and construction market. Recently, several of our professionals have attained LEED Accreditation so that ZMM is fully capable of addressing the needs of our clients who are interested in designing buildings that meet the US Green Building Council's standards. This continues ZMM's active implementation of sustainable design principles on education projects, most recently featured at the Lincoln County Comprehensive High School.

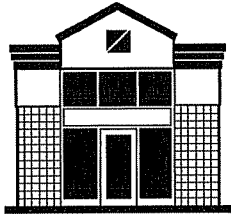
ZMM offers all of the following professional services within our organization:

PRE-DESIGN

- Educational Facility Planning
- Programming and Planning
- Feasibility Studies
- Existing Building Evaluation
- Site Evaluation and Analysis
- Master Planning
- Construction Cost Estimating



Executive Summary		Index (Pages)
National Guard Bureau Area (NSF)		
Operations	30,013	
Sub-Total (PSF)	30,013	
Total (GSF)	32,414	
Department of Energy Area (NSF)		
Training	4,183	
Operations	19,911	
Information Technology	19,144	
Analysis	309	
General Support	3,761	
Sub-Total (PSF)	47,314	
Total (GSF)	46,283	
AFRC Area (NSF)		
Administration	12,184	
Unit Storage	0	
Under Floors	0	
Special Functions	0	
Sub-Total (PSF)	12,184	
Total (GSF)	14,883	
Joint Interagency Training Center - East Area (NSF)		
Administration	11,773	
Training	21,626	
Other	0	
Sub-Total (PSF)	33,399	
Total (GSF)	44,878	
Billings Area (NSF)		
General	58,756	
Sub-Total (PSF)	58,756	
Total (GSF)	73,680	
Total Building Area Area (GSF)		
National Guard Bureau	32,414	
Department of Energy	65,283	
Armed Forces Roadways Center	16,889	
Joint Interagency Training Center	43,878	
Other	73,680	
Total (GSF)	234,070	

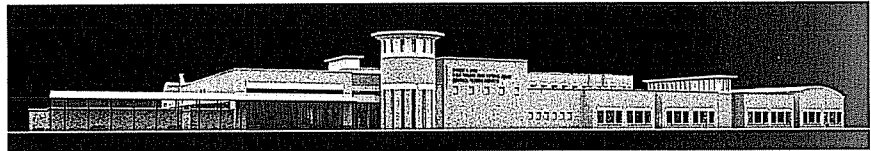


Professional Services

DESIGN

Architectural Design
Sustainable Design
Civil Engineering
Landscape Architecture
Structural Engineering
Mechanical Engineering

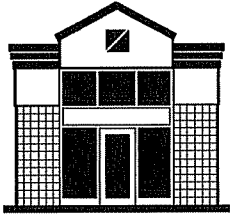
Electrical Engineering
Lighting Design
Data System Design
Interior Design
Energy Consumption Analysis



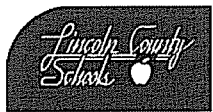
POST DESIGN

Construction Administration
Value Engineering
Life Cycle Cost Analysis
Post-Occupancy Evaluation





Repeat Clients:



Quality Assurance

The best way to determine our capabilities is by speaking to clients we have assisted on previous projects. Please review the recommendations letters contained in this brochure, or contact any of our previous clients. ZMM's quality assurance program will help ensure the success of your project.

We work hard at ZMM to be the best we can be. Quality professional services require a Quality Assurance Program and at ZMM this program assures our clients of designs which fully meet their expectations. Our program includes the following six major components:

Goals of Quality Control Program

Identifying Client Expectations & Project Requirements

Selecting Project Team

On-Going Project Appraisal

Post Project Review

Staff Training, Assessment and Enhancement

Knowing and understanding our clients expectations is our goal. Clients do not care what we know until they know that we care.

As part of our ongoing project appraisal we conduct quality assurance reviews at the following stages of every project:

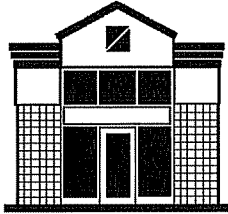
Schematic Design Phase

Design Development Phase

Working Drawing Phase

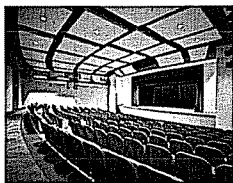
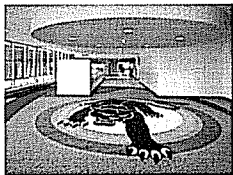
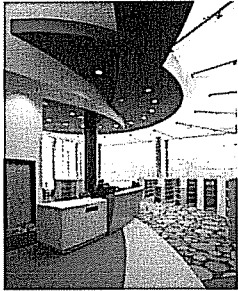
Construction Phase

We encourage our clients to participate in the quality assurance review process as much as possible. In most cases, the owner's participation is required to insure a quality project. The quality of our work is the key to our continued success and repeat client base.



Educational Facilities

Lincoln County Comprehensive High School Lincoln County Schools Hamlin, WV

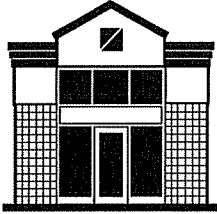


This consolidated senior high school for 850 students in grades 9 through 12, includes two gymnasiums with seating for 840 in the main gym, full food service facilities, a 300 seat auditorium, a library featuring state of the art technology, and all required curricular classroom spaces. Vocational space is included in the facility making it one of the new breed of comprehensive high schools. The building is air conditioned with a four pipe, hot water/chilled water, air handling system meeting all indoor air quality requirements. It also includes LAN cabling system, integrated classroom intercom telephone and program system, closed circuit television, cable television system, fire alarm and perimeter security system.

This facility is one of the first educational buildings in the state to include sustainable building design features such as classroom daylighting with automatic lighting control, high efficiency HVAC equipment, and reduced storm water runoff.

Size: 216,500 SF
Cost: \$32,000,000
Completed: August, 2006



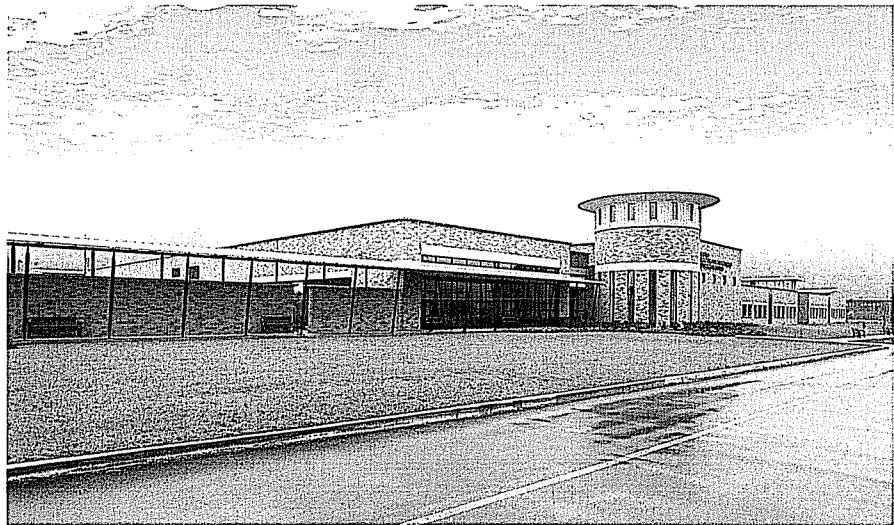
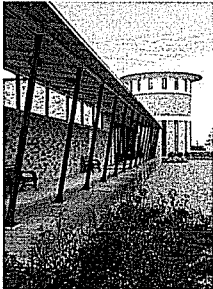


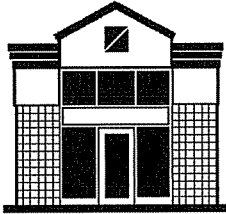
Military Projects

Robert C. Byrd Regional Training Institute Camp Dawson, WV

The Regional Training Institute at Camp Dawson is a new 143,000 square foot facility that will provide a setting for a variety of training classes. The military and civilian populations from the region and areas throughout the country will have a space for meetings and conferences. This new facility includes classrooms, library, sleeping rooms, dining room, auditorium, swimming pool, Post Exchange and snack bar.

Size: 148,066 SF
Project Cost: \$21M
Completion Date: 2002



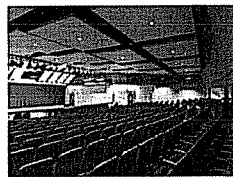
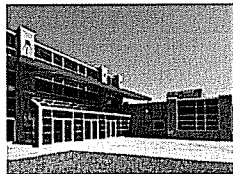
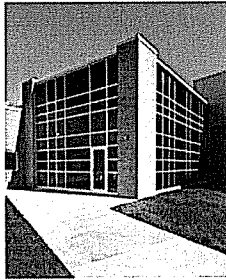


Educational Facilities

St. Albans High School

Kanawha County Schools

St. Albans, WV

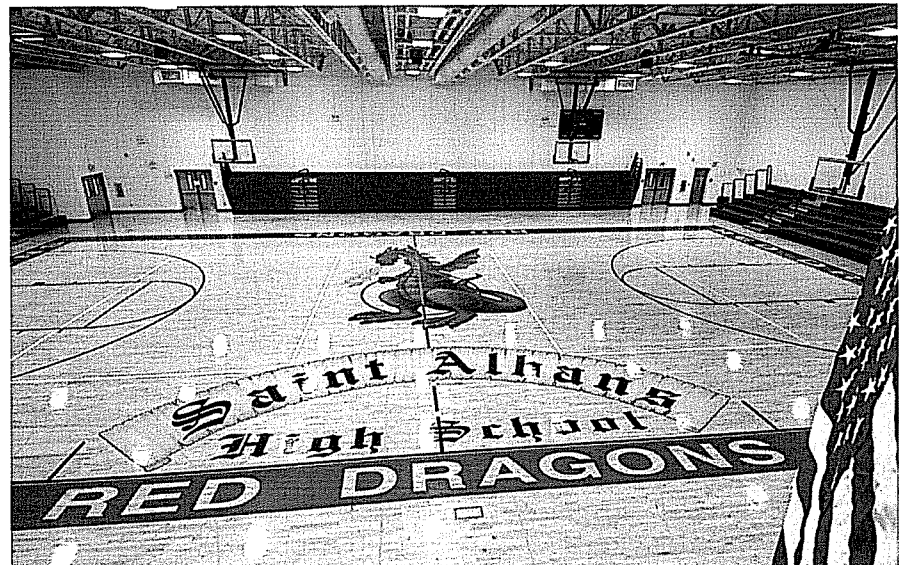


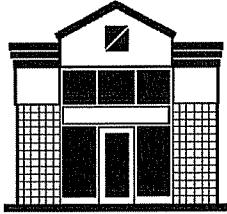
The renovation and additions to St. Albans H. S. include the razing of about 40% of the existing structure and the construction of 124,000 sq. ft. of new facility. The completed facility will house 1050 students, grades 9 thru 12. The new facility includes a distance learning center with duplex teleconferencing, and a state of the art media center with technology distribution throughout the entire facility. It also includes complete food service facilities and a commons/dining area, which serves as the focal point for access to the gymnasiums and auditorium.

Project costs: \$24,172,831

Size: 172,596 SF

Completion Date: 2003

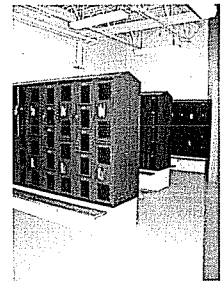
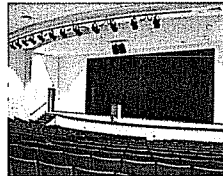
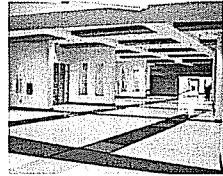




Educational Facilities

Greenbrier East High School

Greenbrier County Schools
Lewisburg, WV



Greenbrier East High School was a campus style plan with six individual disconnected buildings. The County desired to construct a seventh disconnected structure to house 300 ninth grade students which would be moved to this facility to achieve a true middle school configuration in the County.

Instead, ZMM designed a concept that integrated ninth grade students into the existing facilities which allowed for a smaller addition to accommodate the enlarged enrollment. Also, the scheme provided enclosed connections between all buildings which eliminated 22 exterior, unsupervised entrances.

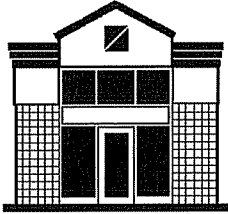
Included in this extensive renovation was replacement the 35 year old HVAC system, a new auxiliary gym, new classroom lighting and electrical systems, all of which will improve the learning environment for all 1200 students.

Project Costs: \$11,800,000

Existing Size: 205,057 SF

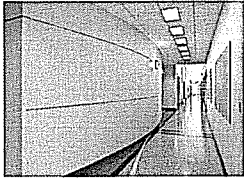
Completion Date: Fall 2005



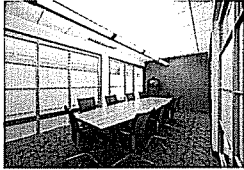


Higher Education Facilities

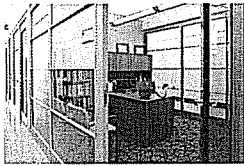
Erma Byrd Center Public Higher Education Center Beckley, WV



This project provides a central location for classroom and administrative space to be shared by six different colleges and universities. It is the first building of a planned campus environment to be comprised of other classroom buildings and research facilities.



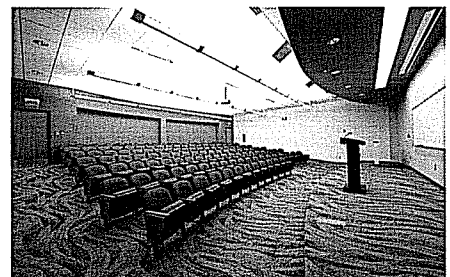
The project consists of 29,700 SF on the main level and 3,300 SF of mechanical mezzanine. Being a teaching facility, the building itself is designed to be a teaching tool. Daylighting is incorporated throughout the building and the mechanical equipment is designed to be viewed and monitored by students in a learning environment. Using data collected by various sensors, the control system can graphically display how all systems react to changes in environmental conditions.

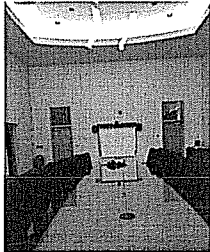
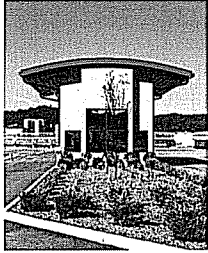
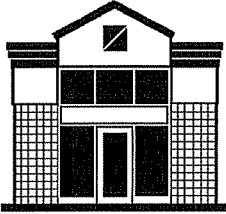


This project was funded by appropriations from Senator Robert C. Byrd, the Higher Education Policy Commission and a grant from the Appalachian Regional Commission.

Completion date: August 2007

Total Project Cost: \$7.5M





Office Projects

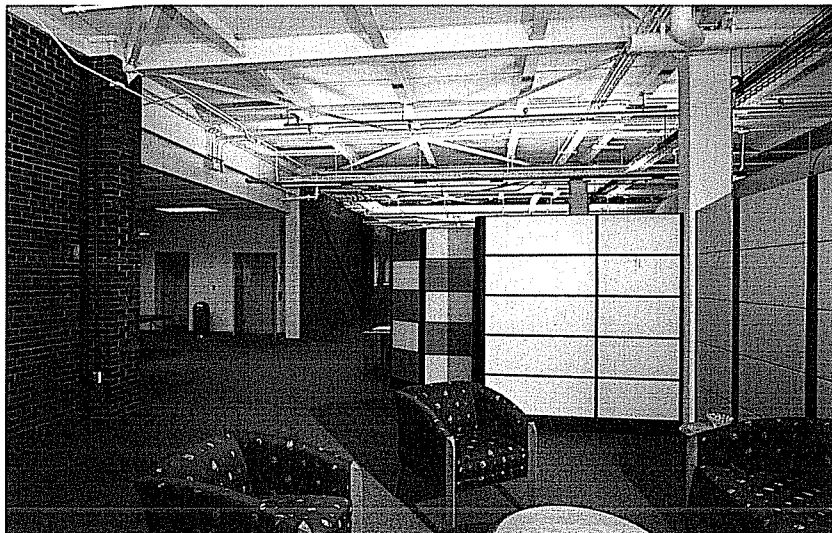
Dow Plant Headquarters Building

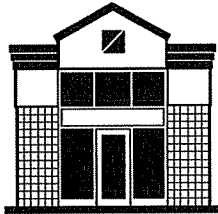
Dow Chemical Company
South Charleston, WV

ZMM was responsible for the master planning as well as architectural and engineering design for renovations and additions to the existing plant shop to serve as the main plant headquarters housing all plant maintenance and engineering personnel.

The renovation includes open office space, an emergency operations center, locker room, a lunch room and plant conference center.

Size: 27,200 SF





Military Projects

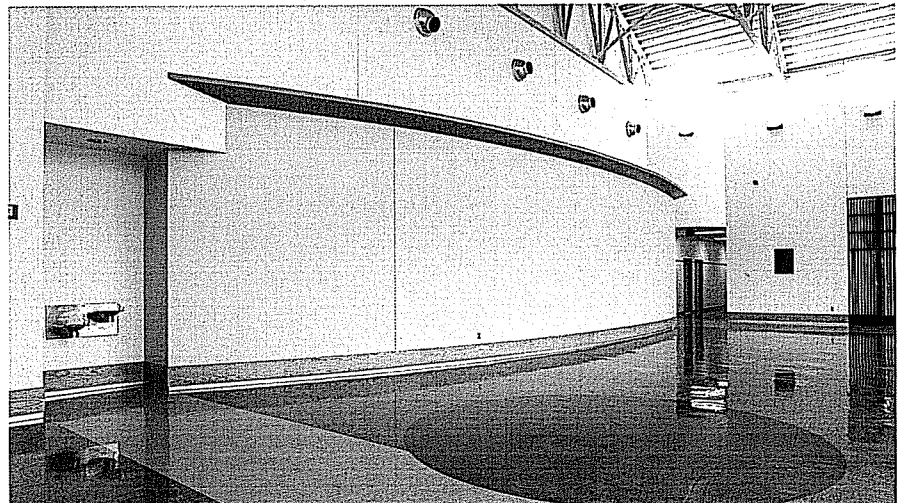
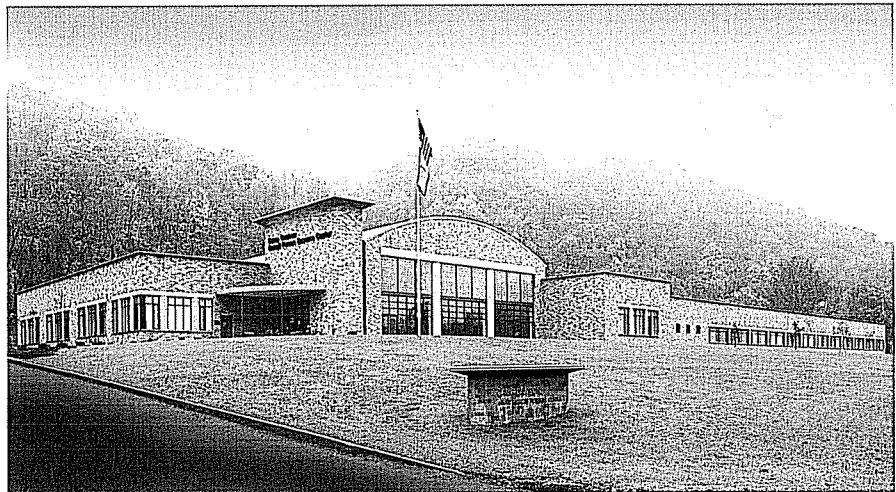
Armed Services Reserve Center Camp Dawson, WV

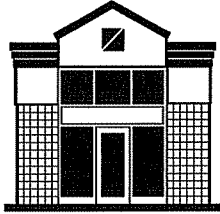
The Armed Forces Reserve Center will house five National Guard and Army Reserve Units and their support personnel. Its mission is twofold: first, to maintain readiness for its attached units and second, to serve as a resource to the surrounding community. The primary readiness mission for the center's attached units is accomplished by providing designated spaces for each unit as well as general educational and gathering spaces that can be shared among the units. The building's community mission is to provide a gathering space for social functions, a shelter-in-place in times of natural disaster, and a community education resource with distance learning network capabilities. It also includes kitchen and dining facilities and physical fitness areas.

Size: 56,200 SF

Project Cost: \$7.5M

Completion Date: June, 2000





Military Projects

Glen Jean Armed Forces Center

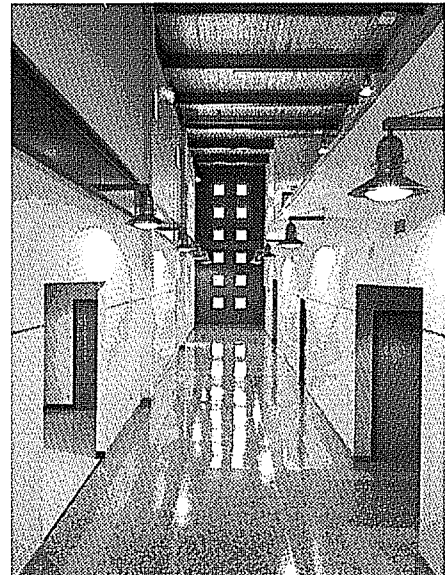
Glen Jean, WV

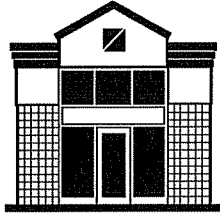
The Glen Jean Armed Forces Center contains three distinct military functions: a facility for routine maintenance of over-the-road and tracked military vehicles, an armory housing four West Virginia National Guard units and the Southern West Virginia Military Entrance Processing Station, where new recruits officially enter the military system. The brick exterior walls are highlighted with limestone and metal trim accents. A large assembly hall, plus classroom and training space, enhance the ability of the armory building to provide training for military personnel, and additionally to provide space for community functions.

Size: 109,000 SF

Project Cost: \$18M

Completion Date: 2003





Military Projects

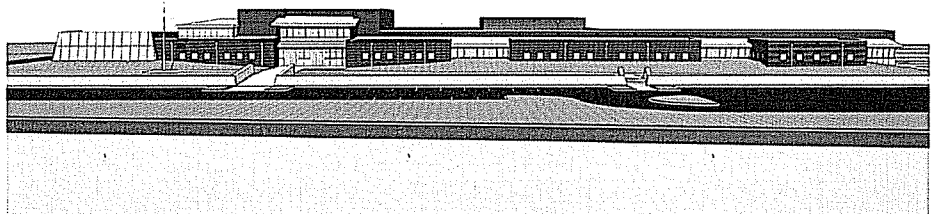
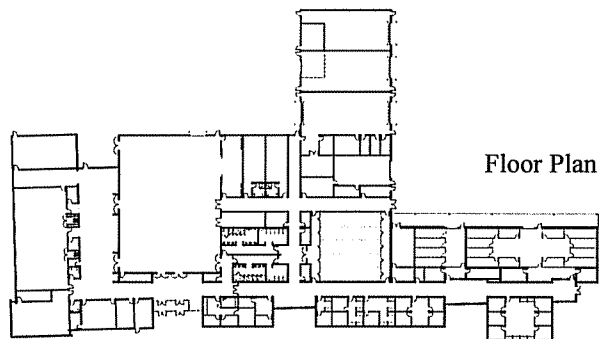
Logan-Mingo Readiness Center

Logan, WV

The design of the Logan-Mingo Readiness center was developed by examining both the program and building site, and developing strategies to design a facility that is functional, responds to site, security, and aesthetic parameters, while requiring minimal maintenance. The building layout was developed by working closely with the end-users to determine the appropriate configuration of building spaces to maximize the efficiency of the operations, and to respond to the unique missions of the 150th Armored Reconnaissance Squadron and the 156th Military Police (LNO) Detachment. Clear separation of "public" and "private" areas within the facility, unique office configurations related to training requirements, and the addition of State Funded additional spaces.

The exterior (and in many cases the interior) aesthetic of the facility was driven by the location of the Readiness Center within an industrial park on a reclaimed surface mined site. The decision led to the use of reinforced cast-in-place retaining walls that became both a functional and visual focus. Similar pre-cast walls are used to anchor the facility at the Distance Learning Center, while a cast-in-place retaining wall serves as a part of the Anti-Terrorism/Force Protection design.

Project Budget: \$12M
Size: 54,000 SF
Completion Date: TBD





Military Projects

Construction & Facilities Management Office Charleston, WV

The Construction and Facilities Management expansion project will bring all of the operations of the CMFO together under one roof. The branches that will occupy this facility include: Director of Engineering, Environmental, Planning and Programming, Facility Operations & Maintenance, Business Management, Resource Management, and Design and Construction. This new facility is located slightly to the front, and adjacent to the existing facility, lending prominence to the new construction, and providing a new aesthetic to the entire complex. This transitional space was designed to connect the two structures, while maintaining a connection to the outside through use of natural light, direct visual connections to the exterior, large volumes, irregular geometries, and the use of 'natural' materials.

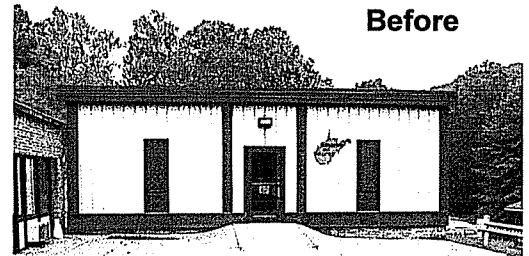
The entry design was coordinated with the Recruiting and Retention building to create an outdoor courtyard, along with new sidewalks, stairs and signage. The entry roof is sloped to provide a greater massing, while a lower canopy provides scale and protection from the elements. Large gathering and work spaces were located at the rear of the building (on the north side) to take advantage of large expanses of glazing located to capture indirect light and views of Coonskin Park.

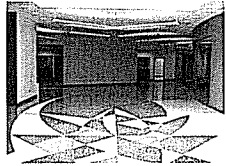
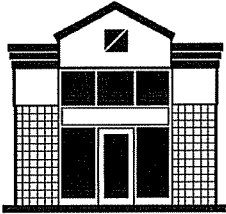
Size: 19,935 SF total

Project Cost: \$2.7M

Completion: November 2007

Before





Government Projects

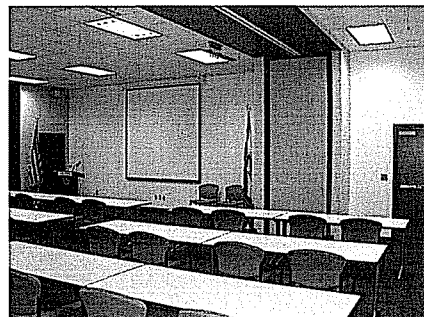
Judge Black Courthouse Annex Parkersburg, WV

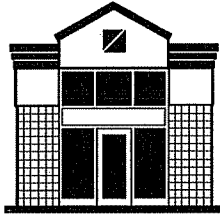
The Judge Black Annex project involved renovating an existing commercial building into county office and courtroom space for the Sheriff's Tax Office, Assessor's Office, Prosecuting Attorney's Office, and the Family Court. The design provided both secure and non-secure circulation, while taking advantage of the existing structural configuration to create large open volumes that lend the building prominence.

The interior design utilized rich colors and dramatic visual accents in public areas, with finishes selected for durability. Layered planes of varying colors accent the building's depth, and skylights provide daylight to county staff throughout the renovated office areas. Exterior improvements included the elimination of an existing storefront system as well as a change in the fenestration, to more closely match the existing courthouse and to change the character and typology of the existing facility.

Size: 36,828 SF

Completion Date: 2005





Robert M. Fuller, PE

Position

Principal, Capitol Engineering, Inc.

Education

M.S. Engineering, Marshall University Graduate College, 1997

B.S. Engineering, West Virginia Institute of Technology 1989

Professional Credentials

Registered Professional Engineer – WV, PA, OH

OSHA 40-Hour Health and Safety Training

OSHA Supervisor Training

Civic Affiliations

Society of American Military Engineers

American Society of Civil Engineers

American Institute of Architects

Construction Specifications Institute

Professional Experience

Project Manager with 15 years of experience with site investigation, planning, design and contract administration services on military, site development and mine reclamation projects. Mr. Fuller has been fully responsible technically, managerially and administratively for the planning, investigation, design and contract document preparation for over 50 projects in the State of West Virginia. Mr. Fuller has served as Associate Professor of Civil Engineering Technology at West Virginia University Institute of Technology on a full-time, part-time and adjunct basis.

Mr. Fuller was principal or project manager for the following West Virginia Army National Guard Projects completed by Capitol Engineering, Inc.

Logan-Mingo Readiness Center

Morgantown Readiness Center

Mountaineer Challenge Academy

Kingwood Readiness Center

Glen Jean Armed Forces Reserve Center

Summersville Readiness Center Buckhannon Siting Studies

Logan County Feasibility Study

Mingo-Logan Siting Study

Camp Dawson Rappelling Tower Evaluation

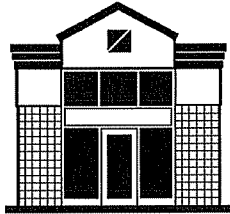
Ross Property Conceptual Site Layout

Engineering consultant for the Center for National Response

Eleanor AFRC & CSMS Utility Location and Property Staking



Capitol Engineering, Inc.



Personnel

Architects

Steven Branner, AIA	Architect, President, Principal
David Ferguson, AIA	Project Architect, REFP, Principal
C. Henry Walker, AIA	Architect, LEED AP
Mike Henley, AIA	Architect
Mark Epling, AIA	Architect, Specifications
Adam Krason, AIA	Architect, LEED AP
Brian Estep, AIA	Architect

Engineers

Robert Doeffinger, PE	Engineer, VP, Principal
Steve Cook, PE	M and E Design Engineer
Scot Casdorff, PE	Electrical Engineer
Steve Hedrick, PE	Structural Engineer

Designers & Technicians

Mike Abernethy	Electrical Design, LC, IESNA
Penn Markham, EIT, IEEE	Electrical Engineering Designer
Bob Groom	Mechanical Design Technician
Mike Flowers	Mechanical Design Technician
Rich Johnson	Structural Technician
James Merritt	Intern
Matt Engle, AAIA	Designer
Lauren Smith, AAIA	Designer
Nate Spencer, AAIA	Designer
Jessica Olcott	Graphic Designer

Interior Designers

Alana Pulay, IIDA	Interior Designer
-------------------	-------------------

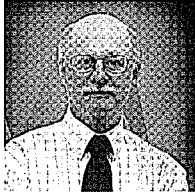
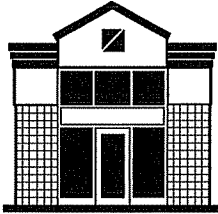
Construction Administration

Glenn Savage, AAIA	Construction Administrator
David Unrue, AAIA	Construction Administrator
Theresa Dorsey	Administrative Assistant

Administration and Support Services

Rod Watkins, AAIA, REFP	Marketing, Educational Planning, Vice President, Principal
Dr. David Stewart	Director, Institutional Development
Steve Ledahawsky	Business Manager
Lisa Bowles	Executive Secretary
Delores Fisher	Receptionist
Robert Estep	Production Assistant





Steven Branner, AIA, NCARB

Position

Principal, ZMM, Inc.
Corporate Management
Architectural Programming
Architectural Design and Production

Education

B.S., Architecture; University of Cincinnati, Cincinnati, Ohio; 1967

Employment History

1967-1973, Project Architect; ZMM Inc.
1973-1982, Director of Architecture; ZMM, Inc.
1982-present, President; ZMM, Inc.

Professional Credentials

Registered Architect (WV, VA, OH, KY, FL, NY, CA)
NCARB Certification
Professional Member; American Institute of Architects (WV)
President, 1977 & 1978

Civic Affiliations

Member; South Charleston Rotary Club
Past member and chairman, WV Archives & History Commission

Professional Experience

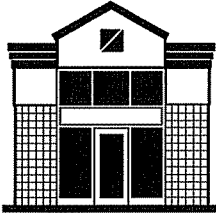
Mr. Branner has been employed with ZMM since 1967. His experience includes all aspects of the management, design, and production of small projects to those exceeding \$100M with an emphasis on Military / Public / Governmental Facilities, Correctional Facilities, and Industrial Facilities.

Mr. Branner also maintains an active role in each project in which he is the principal-in-Charge from it's inception through construction completion. Specific project responsibilities include contract negotiation, building programming, project budgeting, and scheduling, schematic design compliance with project requirements, cost estimating, quality control, and the general overview of each project to insure that client expectations are met.

Major clients overseen by Steve include:

Kanawha County Public Library
Charleston Area Medical Center (CAMC)
Highland Hospital
Dow Chemical Company
NGK Spark Plug Company
Cecil I. Walker Machinery Company
West Virginia Army National Guard
West Virginia General Services Division
West Virginia Regional Jail & Correctional Facility Authority





Adam R. Krason, AIA, NCARB, LEED AP

Position

Project Manager, ZMM, Inc.

Education

Bachelor of Architecture; The Catholic University of America, Washington, D.C.; 1998

B.S., Civil Engineering; The Catholic University of America, Washington, D.C.; 1998

Employment History

1998, Consultant, Anderson Consulting

1998 - 2003, Project Architect, Charleston Area Architectural Firm

2003 – Present, Project Architect, ZMM, Inc.

Professional Credentials

Registered Architect: West Virginia and Ohio

LEED Accredited Professional

Construction Specifications Institute – CDT

Member of American Institute of Architect

NCARB Certification

Civic Affiliations

West Virginia Vision Shared-Sustainable Economic Development Team

West Side Main Street Design Committee, Charleston, West Virginia

West Virginia Qualifications Based Selection Council

Development Council, St. Agnes School, Charleston, West Virginia

Professional Experience

Mr. Krason's experience includes all aspects of the design and production of small and large projects with an emphasis on Military, Public, Government Facilities, Educational Facilities and Industrial Facilities. Mr. Krason also serves on ZMM's Board of Directors.

Specific project responsibilities: building programming, code compliance review, assistance with the preparation of architectural specifications, project budgeting and scheduling, schematic design compliance with project requirements, and the general overview of each project to insure client expectations.

West Virginia Army National Guard - Logan Readiness Center

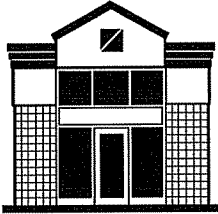
West Virginia Army National Guard - CFMO Expansion Project

Judge Donald F. Black Courthouse Annex

Nicholas County High School Renovation and Additions

The Boulevard at 2412 - Residential Development





Robert C. Doeffinger, P.E.

Position

Principal, ZMM, Inc.

Corporate Management, Project Management and Coordination,
Engineering Programming and Design

Education

B.S., Mechanical Engineering; West Virginia University,
Morgantown, West Virginia; 1973

M.S., Architectural Engineering; Pennsylvania State University,
University Park, Pennsylvania; 1976

Employment History

1976-1977, Mechanical and Architectural Engineer; ZMM, Inc.

1977-1982, Director of Engineering; ZMM, Inc.

1982-present, Vice-President, Secretary and Treasurer; ZMM, Inc.

Professional Credentials

National Council of Examiners for Engineering and Surveying
(NCEES)

Registered Engineer (WV, TN, FL, PA, VA, NC, SC, ME, OH, NH,
NY, KY)

Member; ASHRAE - Chairman, Technical Committee 4.1 - HVAC
Load Calculations

Civic Affiliations

Councilman; City of Point Pleasant, WV

Director; Mason County Development Authority

Director; Point Pleasant River Museum

Member; West Virginia Institute of Technology Electrical Engineers
Technical Advisory Committee

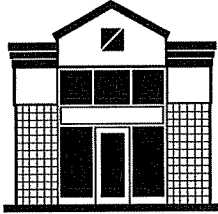
Professional Experience

Mr. Doeffinger is Principal-in-Charge of Engineering. It is his responsibility to ensure that the mechanical and electrical engineering components of ZMM's design are coordinated and integrated into the final product.

Mr. Doeffinger is responsible for new design and retrofit of chilled water systems for all building types including large regional shopping malls. He is involved daily with the firm's selection of appropriate systems for all building types and performs life cycle cost and energy studies.

Mr. Doeffinger is a member of the American Society of Heating, Ventilation and Air-Conditioning Engineers. He is the current national Chairman of the Technical Committee on Heating and Air-Conditioning Load Calculation. He is involved in writing the National Standard on the Method of Calculation, which will shape the nature of the future building energy use for the nation.





David E. Ferguson, AIA, REFP

Position

Principal, Project Architect

Education

B.S., Industrial Technology/Architectural Design; West Virginia State University, Institute, West Virginia; 1979

Employment History

1979-1980, Drafting/Design, Parkline, Inc.
1980-1983, Designer, Union Carbide Corp.
1983-1984, Designer, Cilco, Inc.
1984-1996, Designer, ZMM, Inc.
1996-2001, Project Architect, ZMM, Inc.
2001-Present, Project Architect, Project Manager, ZMM, Inc.
2001-Present, Board of Directors, ZMM, Inc.
2002-Present, Principal, ZMM, Inc.

Professional Credentials

Registered Architect (WV, OH)
Professional Member, American Institute of Architects
Professional Member, West Virginia Chapter of the AIA
Director, West Virginia Chapter of the AIA
Professional Member, US Green Building Council
Member, Council of Educational Facility Planners International
Recognized Educational Facility Professional (REFP) by CEFPI

Community/Professional Service

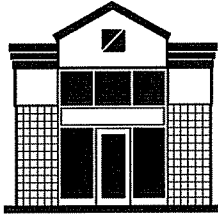
High School Student Mentor/Job Shadowing Program
West Virginia AIA IDP Program Mentor/Advisor
West Virginia State Department of Education - Policy 6200
Revision Committee
West Virginia School Building Authority Performance and Design
Standards Committee

Professional Experience

Mr. Ferguson's responsibilities at ZMM include all aspects of project management and scheduling, project programming, educational facility planning, project budgeting, code compliance reviews, architectural design and presentation, quality control. He is also responsible for client and public meetings from small to multi-million dollar projects. As a Principal of the firm he has corporate administrative duties and serves on the Board of Directors for ZMM.

Throughout his tenure at ZMM, Mr. Ferguson's emphasis has been on Educational Design and has had extensive design experience with Industrial, Healthcare, Retail, Public, Governmental, and Recreational Facilities. He is a *Recognized Educational Facility Professional International* and has been involved in the planning





R. Rodney Watkins, Associate AIA, REFP

Position

Principal, ZMM, Inc.

Educational Planning, Administration and Business Development

Education

Computer Programming; Center College, Charleston, West Virginia;
1964

Architectural Drafting; Center College, Charleston, West Virginia;
1965

Employment History

1965 - 1968, Draftsman and Group Leader; West Virginia Area
Architectural Firm

1968 - 1971, Project Manager; West Virginia Area Architectural
Firm

1971 - 1977, Director of Facilities Planning; West Virginia Public
School System

1977 - 1985, Project Manager and Construction Administrator; West
Virginia Area Architectural Firm

1985 - 1991, Principal and Partner; West Virginia Area Architectural
Firm

1991 - Present, Vice President and Principal; ZMM, Inc.

Civic Affiliations

Associate Member; American Institute of Architects

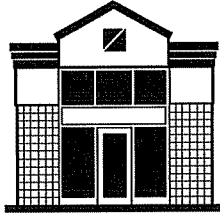
Professional Member; Council of Educational Facility Planners,
International

Professional Experience

Mr. Watkins is responsible for the marketing program, office technology, construction administration, and educational facility planning at ZMM. As a Principal of the firm he also has project as well as corporate administrative duties and serves on the Board of Directors.

Mr. Watkins' started his career in 1965 in the field of architectural drafting for an architectural firm in Charleston, WV. He began his educational planning experience in earnest in 1970 with a 7 year employment with Kanawha County Schools as Coordinator, and later as Director of Facility Planning, gaining a public sector view and experience base in school planning and design.

He is a *Recognized Educational Facility Professional by the Council of Educational Facility Planners, International* and has been involved in the planning and construction of over 100 school facilities throughout West Virginia.



Steven L. Cook, P.E.

Position

Senior Mechanical and Electrical Engineer

Education

B.A., English, West Virginia University, 1972

2 Years toward B. S., Mechanical Engineering, WVIT, 1974-1975

M.A., Humanities, Marshall University Graduate College, 2004

Employment History

1972-1976, Charleston Area Engineering Firm, Designer

1976-1989, Charleston Area Engineering Firm, Project Manager

1989-Present, ZMM, Inc., Senior Mechanical Engineer

Professional Credentials

Registered Engineer (WV)

Member of ZMM's Board of Directors

Member of ASHRE

Professional Experience

Mr. Cook started his career in 1972 as a designer for an engineering firm in Charleston, WV. He is a Professional Engineer registered in West Virginia. He has designed and engineered many projects throughout the state of West Virginia.

Responsibilities for ZMM are the following:

Mechanical Design and Engineering of ZMM's projects

Served as liaison between clients and utility company's

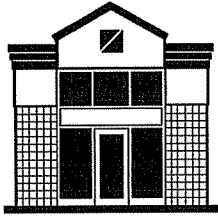
Design of sanitary and gas site utilities, Site utility specifications

In-house review of plumbing, sprinkler system, fire pump, and domestic water booster pump designs

Review of plumbing and fire protection specifications, temperature control design

Equipment selection - air handling units, pumps, and boilers, site visits, observation reports and punch lists





AWARD WINNING DESIGN



2008

Erma Byrd Center

Beckley, West Virginia

AIA HONOR AWARD West Virginia Chapter
Excellence in Architecture



2007

Lincoln County High School

Hamlin, West Virginia

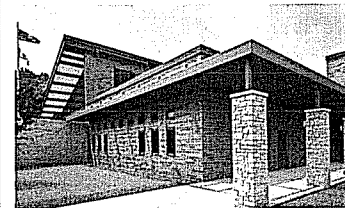
AIA HONOR AWARD West Virginia Chapter
Excellence in Architecture

EDUCATION DESIGN SHOWCASE

Project of Distinction award

AMERICAN SCHOOL & UNIVERSITY

Outstanding Building Design



2006

Gene Spadaro Juvenile Center

Mount Hope, West Virginia

AIA MERIT AWARD West Virginia Chapter
Achievement in Architecture



2004

St. Albans High School

St. Albans, West Virginia

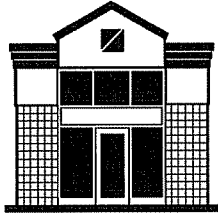
IMPACT ON LEARNING AWARD
Effective Transformation

EDUCATION DESIGN SHOWCASE

Outstanding Building Design

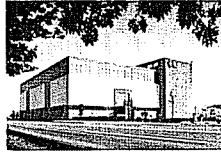
AMERICAN SCHOOL & UNIVERSITY

Outstanding Building Design



ADDITIONAL AWARD WINNING DESIGN

WEST VIRGINIA SOCIETY OF ARCHITECTS Design Honor Awards



Corporate Headquarters Facility
Blue Cross / Blue Shield of West Virginia
Charleston, West Virginia



John XXIII Pastoral Center
Wheeling-Charleston Diocese
Charleston, West Virginia



Corporate Office Building
Contractors' Association of West Virginia
Charleston, West Virginia



One Bridge Place Office Renovation
Fisher-Bryson Properties
Charleston, West Virginia

UNITED STATES NAVY

Admiral's Commendation

Operations Building Alterations
Naval Security Group
Sugar Grove, West Virginia

CONSTRUCTION SPECIFICATIONS INSTITUTE

Honorable Mention

Restoration and Renovation Projects
Cottage Renovations to Federal Prison Camp
Alderson, West Virginia

STONEWALL JACKSON LAKE

Merit Award

Design and Environmental Program
Recreation Area Basic Park
Weston, West Virginia



The County Commission of Wood County

No.1 Court Square, Suite 203
Parkersburg, West Virginia 26101
(304) 424-1984



ROBERT K. TEBAY

RICK MODESITT

DAVID BLAIR COUCH

COUNTY ADMINISTRATOR

Marty Seufer
424-1976

COUNTY CLERK

Jamie Six
424-1850

March 3, 2008

Dear Sir/Madam:

This is a letter of reference for Adam R. Krason, ZMM, Inc. The County Commission of Wood County has employed ZMM, Inc. on several projects, most notably the renovation of the Judge Black Annex.

Mr. Krason has always been extremely professional and has proven himself to be very flexible in meeting our needs. He is friendly and easy to work with. He has proven to be an asset to the County and we anticipate a long-term relationship with ZMM, Inc. in the coming years.

Sincerely,

THE COUNTY COMMISSION OF WOOD COUNTY

Robert K. Tebay, President

Rick Modesitt, Commissioner

David Blair Couch, Commissioner

WCC:ah

The Higher Education Foundation

200 MAIN STREET, BECKLEY, WEST VIRGINIA 25801-4613

TELEPHONE 304 929-2010

FACSIMILE 304 929-2009

forwardsww@earthlink.net

January 22, 2008

Mr. Rod Watkins, Vice-President, AAIA, REFP
ZMM, Inc.
222 Lee Street West
Charleston, WV 25302

Dear Rod,

Last week, January 14, 2008, we began the second semester of use of The Erma Byrd Center at the Public Higher Education Center campus, Beaver, West Virginia. This endeavor has been a significant triumph for our area and is the first of its kind in West Virginia. Seven public colleges/universities have come together in a single center in a spirit of cooperation rather than competition.

This is a note to thank you and the ZMM family for the critical role with excellence that you played in this project. Initially, we had worked with another architect in Pittsburgh, but unfortunately a series of events made continuance with them impossible. We were then met with crucial deadlines for reformulating an entire building with a very constricted timeline and an equally restricted budget. We turned to ZMM.

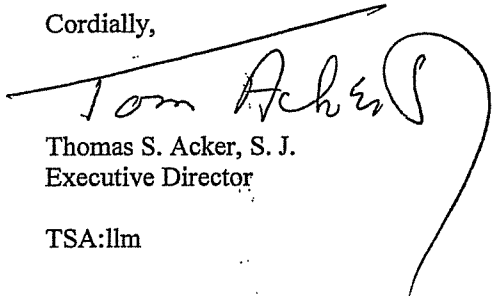
Our contract with you began in December, 2005. We had to complete architectural plans, bid the building, secure a contractor, and begin construction by July, 2006, in order to meet an opening date of August, 2007. ZMM was the perfect partner with us as we forged a new building on a yet raw campus and made it work.

The building designed by ZMM was elegant, yet simple. The budget parameters were met, including a striking view from I-64. The building design impresses all.

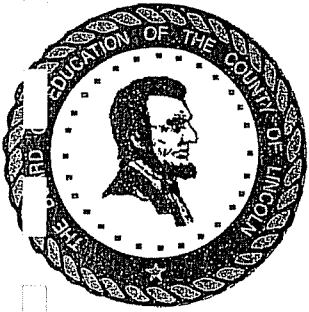
Radford & Radford was chosen as the builder, and ZMM worked with them expeditiously and effectively. The architectural plans were exceptionally clean, and the few change orders were almost entirely initiated by the owner as some afterthoughts developed. The project was completed on time, and the first semester was excellent. Over 131 classes were taught engaging 1,990 students.

I simply wanted to send you this note of thanks for accepting a very daunting task, completing it with excellence, maintaining the very restricted budget, and making this whole project successful. We are now looking forward to a second building, and while we probably need by state law to seek architectural services through an RFP, I hope that ZMM will engage in the process. It would be to our benefit if ZMM were the winning architects. You have my highest recommendation and most sincere thanks.

Cordially,


Thomas S. Acker, S. J.
Executive Director

TSA:llm



Lincoln County Schools

David L. Roach
SUPERINTENDENT

Jeff Huffman
ASSISTANT SUPERINTENDENT

January 22, 2008

To Whom It May Concern:

As the previous superintendent of Cabell County Schools and present superintendent of Lincoln County Schools, I am in the unique position to comment on the services of ZMM, Inc., Architects and Engineers. They provided professional services in both of these counties and I found their services in both counties to be of the highest quality.

I have found, through my experiences with ZMM, that their services are equivalent to having additional employees of the school system. I base this statement on the fact that their representatives consistently monitor budget expenditures in order to stay within the project budget. Change orders are minimal and always justified. ZMM is present and accessible before, during and after project completion to assure the interests of the school system are being met. I particularly appreciate their support in dealing with contractors who may have remaining obligations or product deficiencies that need to be resolved following project completion.

Simply stated, ZMM works to assure that the interests of the client are met and refuses to bow to contractors by accepting less than quality work. I believe this is a rare quality and makes ZMM an elite company.

Sincerely,

David L. Roach
Superintendent of Schools