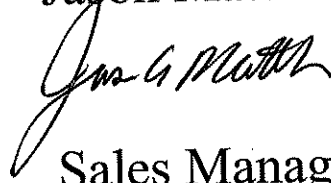


Bill Kelley Inc. bids the following:

Bid submitted by
Jason Matthews



Sales Manager

Scaled Bid Enclosed

RFQ No. MV07
Buyer: State of W.V.
Bid Opening Date: 9-18-06
Bid Opening Time: 1:30

Mail To:

|||||
PURCHASING DIVISION
2019 WASHINGTON STREET EAST
P O BOX 50130
CHARLESTON WV 25305-0130



State of West Virginia
 Department of Administration
 Purchasing Division
 2019 Washington Street East
 Post Office Box 50130
 Charleston, WV 25305-0130

Request for Quotation

RFQ NUMBER
MV07

PAGE
1

ADDRESS CORRESPONDENCE TO ATTENTION OF
BETTY FRANCISCO 304-558-0468

VENDOR

RFQ COPY

T
 Jason Matthews
 Bill Kelley Incorporated
 P. O. Box 340
 Buckhannon, WV 26201

ALL STATE AGENCIES
 AND POLITICAL SUBDIVISIONS
 VARIOUS LOCALES AS INDICATED
 BY ORDER

DATE PRINTED	TERMS OF SALE	SHIP VIA	F.O.B.	FREIGHT TERMS
08/15/2006				

BID OPENING DATE: 09/18/2006 BID OPENING TIME 01:30PM

LINE	QUANTITY	UOP	CAT. NO.	ITEM NUMBER	UNIT PRICE	AMOUNT
<p>REQUEST FOR QUOTATION</p> <p>THE PURCHASING DIVISION IS SOLICITING BIDS FOR A BLANKET OPEN-END STATEWIDE CONTRACT TO SUPPLY 2007 MOTOR VEHICLES (OR THE CURRENT MODEL YEAR) FOR ALL WEST VIRGINIA STATE AGENCIES AND POLITICAL SUBDIVISIONS.</p> <p>*****IMPORTANT*****</p> <p>QUESTIONS SHALL BE ACCEPTED THROUGH MONDAY, AUGUST 29, 2006. VENDORS ARE ENCOURAGED TO COMPLETELY REVIEW REQUEST FOR QUOTATION PACKAGE AND BID SHEETS PRIOR TO THAT TIME. TIME IS OF THE ESSENCE AND THIS BID SCHEDULE MUST BE MAINTAINED. WRITTEN QUESTIONS MAY BE SENT VIA FAX, USPS, COURIER OR E-MAIL. THE PREFERRED METHOD OF RECEIVING QUESTIONS IS VIA E-MAIL.</p> <p>*****IMPORTANT*****</p> <p>YOU MAY SEND (OR HAND DELIVER) YOUR QUESTIONS TO:</p> <p>BETTY FRANCISCO PURCHASING DIVISION 2019 WASHINGTON STREET, EAST POST OFFICE BOX 50130 CHARLESTON, WEST VIRGINIA 25305</p> <p>FAX: 304-558-4115</p> <p>E-MAIL: BFRANCISCO@WVADMIN.GOV</p>						

SEE REVERSE SIDE FOR TERMS AND CONDITIONS

SIGNATURE	TELEPHONE	DATE
-----------	-----------	------

TITLE	FEIN	ADDRESS CHANGES TO BE NOTED ABOVE
-------	------	-----------------------------------

WHEN RESPONDING TO RFQ, INSERT NAME AND ADDRESS IN SPACE ABOVE LABELED 'VENDOR'

**GENERAL TERMS & CONDITIONS
REQUEST FOR QUOTATION (RFQ) AND REQUEST FOR PROPOSAL (RFP)**

1. Awards will be made in the best interest of the State of West Virginia.
2. The State may accept or reject in part, or in whole, any bid.
3. All quotations are governed by the *West Virginia Code* and the *Legislative Rules* of the Purchasing Division.
4. Prior to any award, the apparent successful vendor must be properly registered with the Purchasing Division and have paid the required \$125.00 registration fee.
5. All services performed or goods delivered under State Purchase Orders/Contracts are to be continued for the term of the Purchase Order/Contract, contingent upon funds being appropriated by the Legislature or otherwise being made available. In the event funds are not appropriated or otherwise available for these services or goods, this Purchase Order/Contract becomes void and of no effect after June 30.
6. Payment may only be made after the delivery and acceptance of goods or services.
7. Interest may be paid for late payment in accordance with the *West Virginia Code*.
8. Vendor preference will be granted upon written request in accordance with the *West Virginia Code*.
9. The State of West Virginia is exempt from federal and state taxes and will not pay or reimburse such taxes.
10. The Director of Purchasing may cancel any Purchase Order/Contract upon 30 days written notice to the seller.
11. The laws of the State of West Virginia and the *Legislative Rules* of the Purchasing Division shall govern all rights and duties under the Contract, including without limitation the validity of this Purchase Order/Contract.
12. Any reference to automatic renewal is hereby deleted. The Contract may be renewed only upon mutual written agreement of the parties.
13. **BANKRUPTCY:** In the event the vendor/contractor files for bankruptcy protection, this contract is automatically null and void, and is terminated without further order.
14. **HIPAA Business Associate Addendum** - The West Virginia State Government HIPAA Business Associate Addendum (BAA), approved by the Attorney General, and available online at the Purchasing Division's web site (<http://www.state.wv.us/admin/purchase/vrc/hipaa.htm>) is hereby made part of the agreement. Provided that, the Agency meets the definition of a Covered Entity (45 CFR §160.103) and will be disclosing Protected Health Information (45 CFR §160.103) to the vendor.

INSTRUCTIONS TO BIDDERS

1. Use the quotation forms provided by the Purchasing Division.
2. **SPECIFICATIONS:** Items offered must be in compliance with the specifications. Any deviation from the specifications must be clearly indicated by the bidder. Alternates offered by the bidder as **EQUAL** to the specifications must be clearly defined. A bidder offering an alternate should attach complete specifications and literature to the bid. The Purchasing Division may waive minor deviations to specifications.
3. Complete all sections of the quotation form.
4. Unit prices shall prevail in cases of discrepancy.
5. All quotations are considered F.O.B. destination unless alternate shipping terms are clearly identified in the quotation.
6. **BID SUBMISSION:** All quotations must be delivered by the bidder to the office listed below prior to the date and time of the bid opening. Failure of the bidder to deliver the quotations on time will result in bid disqualifications.

SIGNED BID TO:

Department of Administration
Purchasing Division
2019 Washington Street East
Post Office Box 50130
Charleston, WV 25305-0130

CLASS 14 TRUCK
 Large Pickup, 2 Wheel Drive
 9000 GVWR, Long Bed, Crew Cab

070-48-14-000

Vendor Name: Bill Kelley Inc.

Manufacturer / Brand GM Chevrolet
 Delivery _____
 Model Name & Number Silverado CE2540

Standard Equipment Requirements:

Engine	MIN: 300 HP 360 TORQUE
Transmission	Automatic
Steering	Power
Brakes	Power
Radio	AM/FM
Glass	All Tinted
Mirrors	Left & Right Outside
License Plate Mounts	Front & Rear
Cargo Box	Fleetside
Bumper	Rear Step Factory Installed
Tires	All Season
Spare Tire	Full Size w/Jack
Air Conditioning	Installed
Rubber Floor Covering	Installed

Price Each Gasoline \$ 26411.48
 Price Each Dedicated Alternative Fuel Diesel \$ 33725.98
 Price Each Bi-Fuel Alternative Fuel \$ 27091.48

EPA
 HGWY
NA

EPA
 CITY
NA

Manual Transmission w/Overdrive (Deduct) 876.^w Does not include Diesel → \$ -
 FOB Dealership: (Deduct) → \$ -
 FOB Other than Metro Charleston - Per Mile _____ \$ NA



2007 Fleet/Non-Retail Chevrolet Silverado 2500HD Classic Crew Cab 167"

STANDARD EQUIPMENT

STANDARD EQUIPMENT - 2007 Fleet/Non-Retail CC25943 Crew Cab 167" WB 2WD Work Truck

EXTERIOR

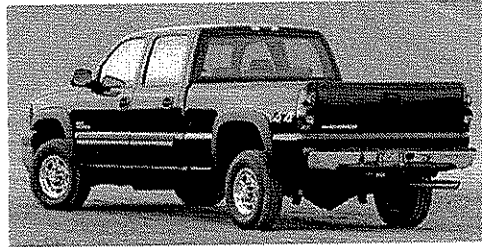
- Paint, solid
- Bumper, front chrome with Gray lower
- Bumper, rear painted, step-style with pad (Not available with (ZW9) pickup box delete.)
- Air dam, Gray
- Wheel flares, front and rear (Refer to Color and Trim chart for compatibility. Front only when (ZW9) pickup box delete is ordered.)
- Grille, color-keyed surround with chrome accent bar
- Headlamps, dual halogen composite with automatic exterior lamp control and flash-to-pass feature
- Daytime Running Lamps, with automatic exterior lamp control
- Lamps, dual cargo area lamps
- Mirrors, outside manual, Black, manual-folding
- Glass, Solar-Ray light-tinted, all windows
- Wipers, front intermittent wet-arm with pulse washers

Report content is based on current data version referenced. Any performance-related calculations are offered solely as guidelines. Actual unit performance will depend on your operating conditions.

GM AutoBook, Data Version: 117.2, Data updated 9/12/2006 10:20:00 AM

©Copyright 1986-2005 Chrome Systems Corporation. All rights reserved.

Customer File:



2007 Fleet/Non-Retail Chevrolet Silverado 2500HD Classic Crew Cab 167"

STANDARD EQUIPMENT

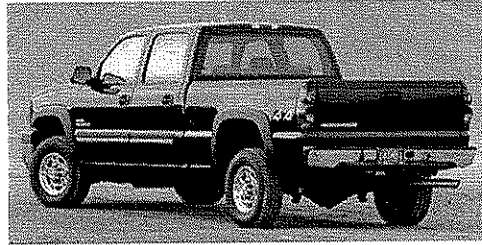
STANDARD EQUIPMENT - 2007 Fleet/Non-Retail CC25943 Crew Cab 167" WB 2WD Work Truck

INTERIOR

- Seat trim, vinyl
- Seats, front 40/20/40 split-bench, 3-passenger, driver and front passenger manual reclining with outboard head restraints
- Seats, rear bench, 3-passenger, folding (includes child seat top tether anchor) (Not available with Regular Cab models.)
- Floor covering, Black rubberized-vinyl
- Steering column, Tilt-Wheel, adjustable with brake/transmission shift interlock
- Steering wheel, includes theft-deterrent locking feature
- Theft-deterrent system, PASSlock II
- Instrumentation, analog with speedometer, odometer with trip odometer, fuel level, voltmeter, engine temperature, oil pressure and tachometer
- Driver Information Center that monitors numerous different systems depending on vehicle equipment
- Warning tones, headlamp on, key-in-ignition, driver and passenger buckle-up reminder and turn signal on
- Air conditioning, dual-zone manual climate control with individual climate settings for driver and right-front passenger
- Audio system, AM/FM stereo with seek-and-scan and digital clock
- Audio system feature, 4-speaker system
- Cup holders, front (Also includes rear cupholders on Extended and Crew Cab models.)
- Cigarette lighter, on instrument panel
- Power outlets, 2 auxiliary instrument panel-mounted with covers, 12-volt
- Mirror, inside rearview manual day/night
- Visors, driver and front passenger, padded with cloth trim, extenders, pocket on driver-side and vanity mirror on passenger-side, Shale-colored
- Assist handle, front passenger (Also includes rear outboard passenger assist handles on Extended and Crew Cab models.)
- Coat hook, driver-side rear (Also includes passenger-side coat hook on Extended and Crew Cab models.)
- Lighting, interior with dome and reading lights, backlit instrument panel switches and door handle-activated illuminated entry

Report content is based on current data version referenced. Any performance-related calculations are offered solely as guidelines. Actual unit performance will depend on your operating conditions.

GM AutoBook, Data Version: 117.2, Data updated 9/12/2006 10:20:00 AM
©Copyright 1986-2005 Chrome Systems Corporation. All rights reserved.
Customer File:



2007 Fleet/Non-Retail Chevrolet Silverado 2500HD Classic Crew Cab 167"

STANDARD EQUIPMENT

STANDARD EQUIPMENT - 2007 Fleet/Non-Retail CC25943 Crew Cab 167" WB 2WD Work Truck

MECHANICAL

- Engine, Vortec 6.0L V8 SFI (300 hp [223.8 kW] @ 4400 rpm, 360 lb-ft of torque [486.6 N-m] @ 4000 rpm)
- Cooling, external engine oil cooler, heavy-duty air-to-oil, integral to driver side of radiator tank
- Transmission, 5-speed manual with overdrive (Requires (LQ4) Vortec 6.0L V8 SFI engine and (AE7) front 40/20/40 split-bench seat.)
- Rear wheel drive
- Rear axle, 4.10 ratio (Refer to Engine/Axle Chart for availability.)
- Battery, heavy-duty 600 cold-cranking amps, maintenance-free with rundown protection and retained accessory power (Not standard with (LBZ) Duramax 6.6L Turbo Diesel V8 engine.)
- Alternator, 105 amps (Not available with (VYU) Snow Plow Prep Package.)
- Pickup box, Fleetside
- Frame, hydroformed ladder-type
- Recovery hooks, front, frame-mounted
- GVWR, 9200 lbs. (4173 kg) (Must specify on CC25903, CK25753, and C*25743 models.)
- Suspension Package, Handling/Trailering, heavy-duty, includes 36 mm piston monotube shocks
- Suspension, front independent with torsion bar and stabilizer bar
- Suspension, rear, 2-stage multi-leaf springs, semi-elliptic
- Tires, LT245/75R16E all-season, blackwall (Includes 5 tires with (E63) Fleetside pickup box. Includes 4 tires with (ZW9) pickup box delete.)
- Wheels, 4 - 16" x 6.5" (40.6 cm x 16.5 cm) 8-lug painted steel
- Tire carrier, outside spare, winch-type mounted under frame at rear
- Steering, power
- Brakes, 4-wheel antilock, 4-wheel disc
- Exhaust, aluminized stainless-steel muffler and tailpipe
- Tools, mechanical jack and wheel wrench located in back of cab

Report content is based on current data version referenced. Any performance-related calculations are offered solely as guidelines. Actual unit performance will depend on your operating conditions.

GM AutoBook, Data Version: 117.2, Data updated 9/12/2006 10:20:00 AM

©Copyright 1986-2005 Chrome Systems Corporation. All rights reserved.

Customer File:



2007 Fleet/Non-Retail Chevrolet Silverado 2500HD Classic Crew Cab 167"

STANDARD EQUIPMENT

STANDARD EQUIPMENT - 2007 Fleet/Non-Retail CC25943 Crew Cab 167" WB 2WD Work Truck

SAFETY

- Brakes, 4-wheel antilock, 4-wheel disc
- Air bags, frontal, driver and right-front passenger (Regular and Extended Cab models includes passenger-side deactivation switch. Never place a rear-facing infant restraint in the front seat of any vehicle equipped with an active frontal air bag. Always use safety belts and the correct child restraints for your child's age and size. Children are safer when properly secured in a rear seat. See the vehicle's Owners Manual and child safety seat instructions for more safety information.)
- Daytime Running Lamps, with automatic exterior lamp control

Report content is based on current data version referenced. Any performance-related calculations are offered solely as guidelines. Actual unit performance will depend on your operating conditions.

GM AutoBook, Data Version: 117.2, Data updated 9/12/2006 10:20:00 AM
©Copyright 1986-2005 Chrome Systems Corporation. All rights reserved.

Customer File:

CLASS 21 TRUCK
 Large Pickup, 4 Wheel Drive,
 9000 GVWR, Long Bed, Dual Rear Wheels

070-48-21-001

Vendor Name: Bill Kelley Inc.

Manufacturer / Brand Chevrolet / Gm
 Delivery _____
 Model Name & Number Silverado / CK35903

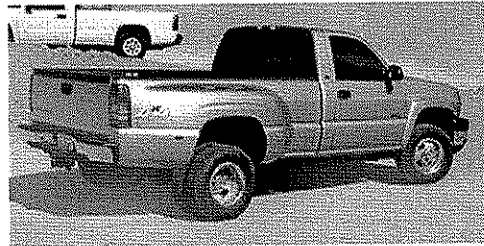
Standard Equipment Requirements:

Engine	MIN: 300 HP 360 TORQUE
Transmission	Automatic
Steering	Power
Brakes	Power/ABS
Radio	AM/FM
Glass	All Tinted
Mirrors	Left & Right Trailer Tow Type
License Plate Mounts	Front & Rear
Dual Rear Wheels	Installed
Tires	All Season Load Range E
Spare Tire	Full Size w/Jack
Cargo Box	Fleetside
Bumper	Rear Step / Factory Installed
Air Conditioning	Installed
Auto Locking Hubs	Installed
Rubber Floor Covering	Installed

Price Each Gasoline \$ 26,716.89
 Price Each CNG \$ 27,396.89

EPA HGWY	EPA CITY
<u>NA</u>	<u>NA</u>

2 Wheel Drive (Deduct)	→	\$ <u>2416.05</u>
Delete Truck Bed (Deduct)	→	\$ <u>579</u>
Short Bed (Deduct)	→	\$ <u>NA</u>
6 Cylinder (Deduct)	→	\$ <u>NA</u>
Manual Transmission w/Overdrive (Deduct)	→	\$ <u>876</u>
Delete Floor Mats (Deduct)	→	\$ <u>NA</u>
Remove Console (Delete) (Console between seats)	→	\$ <u>NA</u>
FOB Dealership: (Deduct)	→	\$ _____
FOB Other than Metro Charleston - Per Mile	→	\$ <u>NA</u>



2007 Fleet/Non-Retail Chevrolet Silverado 3500 Classic Reg Cab 133" WB 4

STANDARD EQUIPMENT

STANDARD EQUIPMENT - 2007 Fleet/Non-Retail CK35903 Reg Cab 133" WB 4WD DRW Wrk Trk

EXTERIOR

- Paint, solid
- Bumper, front chrome with Gray lower
- Bumper, rear painted, step-style with pad (Not available with (ZW9) pickup box delete)
- Air dam, Gray
- Wheel flares, front only (With (GEC) 9800 lbs. (4445 kg) GVWR or (C4M) 9900 lbs. (4491 kg) GVWR includes rear wheel flares unless (ZW9) pickup box delete is ordered.)
- Grille, color-keyed surround with chrome accent bar
- Headlamps, dual halogen composite with automatic exterior lamp control and flash-to-pass feature
- Daytime Running Lamps, with automatic exterior lamp control
- Lamps, Amber roof marker (Standard on (C7W) 11,400 lbs. (5171 kg) GVWR only.)
- Lamps, dual cargo area lamps
- Mirrors, outside manual, Black, manual-folding (Standard on (C7W) 11,400 lbs. (5171 kg) GVWR only. Not available with (C6Y) 9600 lbs. (4354 kg) GVWR, (GEC) 9800 lbs. (4445 kg) GVWR or (C4M) 9900 lbs. (4491 kg) GVWR.)
- Glass, Solar-Ray light-tinted, all windows
- Wipers, front intermittent wet-arm with pulse washers

Report content is based on current data version referenced. Any performance-related calculations are offered solely as guidelines. Actual unit performance will depend on your operating conditions.

GM AutoBook, Data Version: 117.2, Data updated 9/12/2006 10:20:00 AM
©Copyright 1986-2005 Chrome Systems Corporation. All rights reserved.

Customer File:



2007 Fleet/Non-Retail Chevrolet Silverado 3500 Classic Reg Cab 133" WB 4

STANDARD EQUIPMENT

STANDARD EQUIPMENT - 2007 Fleet/Non-Retail CK35903 Reg Cab 133" WB 4WD DRW Wrk Trk

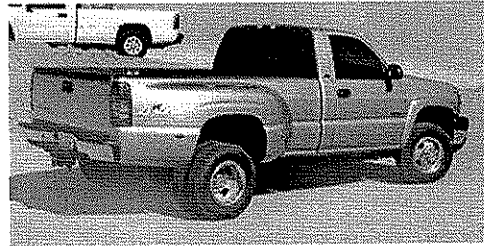
INTERIOR

- Seats, front 40/20/40 split-bench, 3-passenger, driver and front passenger manual reclining with outboard head restraints
- Seat trim, vinyl
- Floor covering, Black rubberized-vinyl
- Steering column, Tilt-Wheel, adjustable with brake/transmission shift interlock
- Steering wheel, includes theft-deterrent locking feature
- Theft-deterrent system, PASSlock II
- Instrumentation, analog with speedometer, odometer with trip odometer, fuel level, voltmeter, engine temperature, oil pressure and tachometer
- Driver Information Center that monitors numerous different systems depending on vehicle equipment
- Warning tones, headlamp on, key-in-ignition, driver and passenger buckle up reminder and turn signal on
- Air conditioning, dual-zone manual climate control with individual climate settings for driver and right-front passenger
- Audio system, AM/FM stereo with seek-and-scan and digital clock
- Audio system feature, 4-speaker system
- Cup holders, front (Also includes rear cupholders on Extended and Crew Cab models)
- Cigarette lighter, on instrument panel
- Power outlets, 2 auxiliary instrument panel-mounted with covers, 12-volt
- Mirror, inside rearview manual day/night
- Visors, driver and front passenger, padded with cloth trim, extenders, pocket on driver-side and vanity mirror on passenger-side, Shale-colored
- Assist handle, front passenger (Also includes rear outboard passenger assist handle on Extended and Crew Cab models.)
- Lighting, interior with dome and reading lights, backlit instrument panel switches and door handle-activated illuminated entry
- Coat hook, driver-side rear (Also includes passenger-side coat hook on Extended and Crew Cab models.)

Report content is based on current data version referenced. Any performance-related calculations are offered solely as guidelines. Actual unit performance will depend on your operating conditions.

GM AutoBook, Data Version: 117.2, Data updated 9/12/2006 10:20:00 AM
©Copyright 1986-2005 Chrome Systems Corporation. All rights reserved.

Customer File:



2007 Fleet/Non-Retail Chevrolet Silverado 3500 Classic Reg Cab 133" WB 4

STANDARD EQUIPMENT

STANDARD EQUIPMENT - 2007 Fleet/Non-Retail CK35903 Reg Cab 133" WB 4WD DRW Wrk Trk

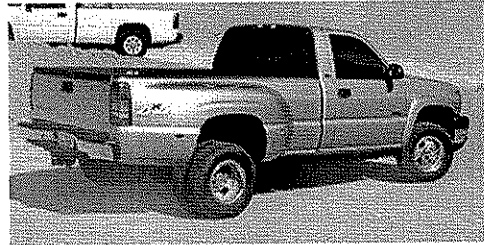
MECHANICAL

- Engine, Vortec 6.0L V8 SFI (300 hp [223.8 kW] @ 4400 rpm, 360 lb-ft of torque [486.6 N-m] @ 4000 rpm)
- Cooling, external engine oil cooler, heavy-duty air-to-oil, integral to driver-side of radiator tank
- Transmission, 5-speed manual with overdrive (Requires (LQ4) Vortec 6.0L V8 SFI engine. Not available with (C6Y) 9600 lbs. (4354 kg) GVWR, (GEC) 9800 lbs. (4445 kg) GVWR or (C4M) 9900 lbs (4491 kg) GVWR.)
- Transfer case, floor-mounted shifter (Standard with 4x4 models. Requires (AE7) front 40/20/40 split-bench seat.)
- Rear axle, 4.10 ratio (Refer to Engine/Axle Chart for availability.)
- Four wheel drive
- Battery, heavy-duty 600 cold-cranking amps, maintenance-free with rundown protection and retained accessory power (Not standard with (LBZ) Duramax 6.6L Turbo Diesel V8 engine.)
- Alternator, 105 amps (Not available with (VYU) Snow Plow Prep Package.)
- Pickup box, Fleetside (Not available with CC35903 models.)
- Frame, hydroformed ladder-type
- Recovery hooks, front, frame-mounted
- GVWR, 11,400 lbs. (5171 kg) with dual rear wheels (Not available with CC35903 models.)
- Dual rear wheels (Standard on (C7W) 11,400 lbs. (5171 kg) GVWR only. Not available with (C6Y) 9600 lbs. (4354 kg) GVWR, (GEC) 9800 lbs. (4445 kg) GVWR or (C4M) 9900 lbs. (4491 kg) GVWR.)
- Suspension, front independent with torsion bar and stabilizer bar
- Suspension, rear 3-stage springs
- Suspension Package, Handling/Trailering, heavy-duty, includes 36 mm piston monotube shocks
- Tires, LT215/85R16D all-season, blackwall (Requires and standard on CK35903 and (C7W) 11,400 lbs. (5171 kg) GVWR, CC35953 or CC35943 models. Not available with CK35903 models and (VYU) Snow Plow Prep Package. Includes 7 tires with (E63) Fleetside pickup box. Includes 6 tires with (ZW9) pickup box delete. Not available with (C6Y) 9600 lbs. (4354 kg) GVWR, (GEC) 9800 lbs. (4445 kg) GVWR or (C4M) 9900 lbs. (4491 kg) GVWR.)
- Wheels, 6 - 16" x 6.5" (40.6 cm x 16.5 cm) 8-lug painted steel (dual rear) includes, painted center caps and steel spare (Requires and only available with (C7W) 11,400 lbs. (5171 kg) GVWR (dual rear wheel))
- Tire carrier, outside spare, winch-type mounted under frame at rear
- Steering, power

Report content is based on current data version referenced. Any performance-related calculations are offered solely as guidelines. Actual unit performance will depend on your operating conditions.

GM AutoBook, Data Version: 117.2, Data updated 9/12/2006 10:20:00 AM
©Copyright 1986-2005 Chrome Systems Corporation. All rights reserved.

Customer File:



2007 Fleet/Non-Retail Chevrolet Silverado 3500 Classic Reg Cab 133" WB 4

STANDARD EQUIPMENT

STANDARD EQUIPMENT - 2007 Fleet/Non-Retail CK35903 Reg Cab 133" WB 4WD DRW Wrk Trk

- Brakes, 4-wheel antilock, 4-wheel disc
- Exhaust, aluminized stainless-steel muffler and tailpipe
- Tools, mechanical jack and wheel wrench located in back of cab

SAFETY

- Brakes, 4-wheel antilock, 4-wheel disc
- Air bags, frontal, driver and right-front passenger (Regular and Extended Cab models includes passenger-side deactivation switch. Never place a rear-facing infant restraint in the front seat of any vehicle equipped with an active frontal air bag. Always use safety belts and the correct child restraints for your child's age and size. Children are safer when properly secured in a rear seat. See the vehicle's Owners Manual and child safety seat instructions for more safety information.)
- Daytime Running Lamps, with automatic exterior lamp control

Report content is based on current data version referenced. Any performance-related calculations are offered solely as guidelines. Actual unit performance will depend on your operating conditions.

GM AutoBook, Data Version: 117.2, Data updated 9/12/2006 10:20:00 AM
©Copyright 1986-2005 Chrome Systems Corporation. All rights reserved.

Customer File:

Vendor Name: Bill Kelley Inc.

Manufacturer / Brand Gm Chevrolet
 Delivery Express / CG2340T
 Model Name & Number

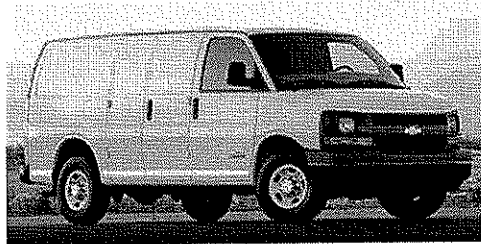
Standard Equipment Requirements:

Engine	Gasoline	MIN: 225 HP 286 TORQUE
Engine	Diesel	MIN: 154 HP 286 TORQUE
Transmission	Automatic	
Steering	Power	
Brakes	Power/ABS	
Radio	AM/FM	
Glass	All Tinted	
Mirrors	Left & Right Outside	
License Plate Mounts	Front & Rear	
Tires	All Season	
Spare Tire	Full Size w/Jack	
Air Conditioning	Installed	
Seating Capacity	2	

	EXTENDED BODY	STANDARD BODY
Price Each Gasoline	\$ <u>14969.80</u>	\$ <u>15832.62</u>
Price Each Diesel	\$ <u>26605.80</u>	\$ <u>21468.62</u>

EPA HGWAY	EPA CITY
NA	NA

FOB Dealership: (Deduct) _____ → \$ -
 FOB Other than Metro Charleston - Per Mile _____ → \$ NA



2007 Fleet/Non-Retail Chevrolet Express Cargo Van 2500 135" WB RWD C

STANDARD EQUIPMENT

STANDARD EQUIPMENT - 2007 Fleet/Non-Retail CG23405 2500 135" WB RWD

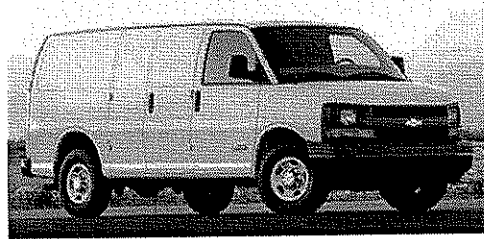
EXTERIOR

- Paint, solid
- Body, standard
- Bumpers, front and rear painted Black with step-pad (Not available with (ZR7) Chrome Appearance Package.)
- Grille, Black composite with single rectangular halogen headlamps (Not available with (ZR7) Chrome Appearance Package.)
- Headlamps, single halogen (Not available with (ZR7) Chrome Appearance Package.)
- Daytime Running Lamps
- Mirrors, outside manual, Black (If the van is an extended Model (*G**7**), or if the van has no rear windows, then the van will get a flat right-side mirror. All other vans will have a convex right-side mirror.)
- Glass, Solar-Ray light-tinted, all windows
- License plate kit, front
- Wipers, front intermittent wet-arm with pulse washers
- Door, swing-out passenger-side, 60/40 split

Report content is based on current data version referenced. Any performance-related calculations are offered solely as guidelines. Actual unit performance will depend on your operating conditions.

GM AutoBook, Data Version: 117.2, Data updated 9/12/2006 10:20:00 AM
©Copyright 1986-2005 Chrome Systems Corporation. All rights reserved.

Customer File:



2007 Fleet/Non-Retail Chevrolet Express Cargo Van 2500 135" WB RWD C

STANDARD EQUIPMENT

STANDARD EQUIPMENT - 2007 Fleet/Non-Retail CG23405 2500 135" WB RWD

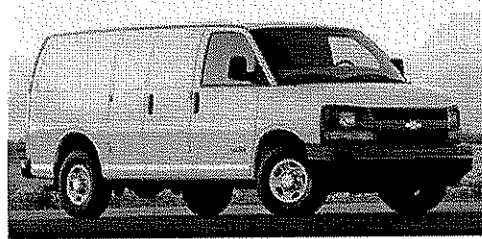
INTERIOR

- Seating arrangement, driver and front passenger high-back buckets, adjustable with head restraints and vinyl or cloth trim
- Seats, front bucket with vinyl trim and outboard head restraints (Requires (**W) interior trim.)
- Console, engine cover with open storage bin
- Floor covering, full length Black rubberized-vinyl (Not available with (YF2) Ambulance Package.)
- Steering wheel, steel sleeve column with theft-deterrent locking feature, Black
- Instrumentation, analog with speedometer, odometer with trip odometer, fuel level, voltmeter, engine temperature and oil pressure
- Oil life monitor
- Warning tones, headlamp on and key-in-ignition
- Tow/haul mode selector, instrument panel-mounted
- Theft-deterrent system, PASSlock
- Air conditioning, single-zone manual
- Defogger, side windows
- Audio system, radio provisions only. Includes alarm warning chimes, radio wiring harness, radio antenna and 2 front door speakers (Not available with (PCH) Hotel Shuttle Package.)
- Cup holders, 3 on the engine console cover
- Power outlets, 2 auxiliary on engine console cover with covers, 12-volt
- Mirror, inside rearview manual day/night
- Headliner, cloth, over driver and passenger
- Visors, driver and front passenger, padded
- Assist handle, front passenger
- Lighting, interior with 2 dome lights, defeat switch and door handle-activated switches

Report content is based on current data version referenced. Any performance-related calculations are offered solely as guidelines. Actual unit performance will depend on your operating conditions.

GM AutoBook, Data Version: 117.2, Data updated 9/12/2006 10:20:00 AM
©Copyright 1986-2005 Chrome Systems Corporation. All rights reserved.

Customer File:



2007 Fleet/Non-Retail Chevrolet Express Cargo Van 2500 135" WB RWD C

STANDARD EQUIPMENT

STANDARD EQUIPMENT - 2007 Fleet/Non-Retail CG23405 2500 135" WB RWD

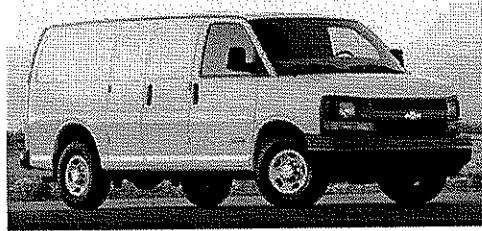
MECHANICAL

- Engine, Vortec 4.8L V8 SFI (285 hp [212.6 kW] @ 5200 rpm, 295 lb-ft of torque [398.3 N-m] @ 4000 rpm) (Includes external engine oil cooler. Standard on *G23*05 models and *G33*05 models. Reference the Engine/Axle page for availability.)
- Transmission, 4-speed automatic, heavy-duty, electronically controlled with overdrive, tow/haul mode and internal transmission oil cooler (Required and standard when ordered with (LR4) Vortec 4.8L V8 SFI engine or (LQ4) Vortec 6.0L V8 SFI engine. Not available with (LLY) Duramax 6.6L Turbo Diesel V8 engine. Reference the Engine/Axle page for availability.)
- Brake/transmission shift interlock, for automatic transmissions
- Rear axle, 3.73 ratio (Standard on the *G23*05 and *G33*05 models. Available on **13405 models with (LM7) Vortec 5.3L V8 SFI engine, or (L59) Vortec 5.3L V8 SFI FlexFuel engine. Reference the Engine/Axle page for availability.)
- Rear wheel drive
- Battery, 600 cold-cranking amps, maintenance-free with rundown protection and retained accessory power
- Alternator, 105 amps (Not available with (LLY) Duramax 6.6L Turbo Diesel V8 engine.)
- GVWR, 8600 lbs. (3901 kg) (Standard on *G23*05 models. Reference the Engine/Axle page for availability.)
- Frame, full-length box ladder-type
- Suspension, front independent with coil springs and stabilizer bar (Requires *G***05 models.)
- Suspension, rear hypoid drive axle with multi-leaf springs
- Tires, front LT245/75R16E all-season, blackwall (Standard on the *G23*05 and *G33*05 models.)
- Tires, rear LT245/75R16E all-season, blackwall (Standard on the *G23*05 and *G33*05 models.)
- Tire, spare LT245/75R16E all-season, blackwall, located at rear underbody of vehicle (Standard on the *G23*05 and *G33*05 models.)
- Wheels, Gray-painted, includes Gray center caps and steel spare
- Steering, power
- Brakes, 4-wheel antilock, 4-wheel disc
- Exhaust, aluminized stainless-steel muffler and tailpipe

Report content is based on current data version referenced. Any performance-related calculations are offered solely as guidelines. Actual unit performance will depend on your operating conditions.

GM AutoBook, Data Version: 117.2, Data updated 9/12/2006 10:20:00 AM
©Copyright 1986-2005 Chrome Systems Corporation. All rights reserved.

Customer File:



2007 Fleet/Non-Retail Chevrolet Express Cargo Van 2500 135" WB RWD C

STANDARD EQUIPMENT

STANDARD EQUIPMENT - 2007 Fleet/Non-Retail CG23405 2500 135" WB RWD

SAFETY

- Brakes, 4-wheel antilock, 4-wheel disc
- Air bags, frontal, driver and right-front passenger (Includes passenger-side air bag deactivation switch on models with (C6P) 8600 lbs. (3901 kg) GVWR and above. Not available with (ZX1) driver only high-back bucket seat or (AJ3) driver side only frontal air bag. Never place a rear-facing infant restraint in the front seat of any vehicle equipped with an active frontal air bag. Always use safety belts and the correct child restraints for your child's age and size, even in vehicles equipped with air bags. Children are safer when properly secured in a rear seat. See the vehicle's Owner's Manual and child safety seat instructions for more safety information.)
- Air bag deactivation switch, frontal, passenger-side (Requires (C6P) 8600 lbs. (3901 kg) GVWR or (C6Y) 9600 lbs. (4354 kg) GVWR. Never place a rear-facing infant restraint in the front seat of any vehicle equipped with an active frontal air bag. Always use safety belts and the correct child restraints for your child's age and size. See the vehicle's Owner's Manual and child safety seat instructions for more safety information.)
- Brake/transmission shift interlock, for automatic transmissions
- Door beams, steel-side
- Daytime Running Lamps

Report content is based on current data version referenced. Any performance-related calculations are offered solely as guidelines. Actual unit performance will depend on your operating conditions.

GM AutoBook, Data Version: 117.2, Data updated 9/12/2006 10:20:00 AM
©Copyright 1986-2005 Chrome Systems Corporation. All rights reserved.

Customer File:

CLASS 17A TRUCK
 Midsize Pickup, Front-Hinged, Full Size Doors,
 4 Wheel Drive, 4 Door Crew Cab, 4850 GVWR

070-48-17-010

Vendor Name: Bill Kelley Inc.

Manufacturer / Brand Chevrolet GM
 Delivery _____
 Model Name & Number C.T15643 / Colorado

Standard Equipment Requirements:

Engine	MIN: 210 HP 225 TORQUE
Transmission	Automatic
Steering	Power
Brakes	Power/ABS
Radio	AM/FM
Glass	All Tinted
Mirrors	Left & Right Outside
License Plate Mounts	Front & Rear
Cargo Box	Fleetside
Bumper	Rear Step Factory Installed
Tires	All Season
Spare Tire	Full Size w/Jack
Air Conditioning	Installed
Front Seat	Bench
Auto Locking Hubs	Installed
Rubber Floor Mats	Installed

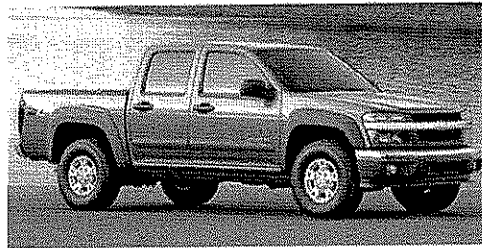
Price Each Gasoline

\$ 18724.13 + ¹⁸⁷⁵⁰ Fuel eval = 37474.13

EPA HGWAY	EPA CITY
<u>22</u>	<u>14</u>

Manual Transmission w/Overdrive (Deduct) _____
 FOB Dealership: (Deduct) _____
 FOB Other than Metro Charleston - Per Mile _____

_____	\$ -
_____	\$ -
_____	\$ -



2007 Fleet/Non-Retail Chevrolet Colorado Crew Cab 126.0" WB 4WD LT w/

STANDARD EQUIPMENT

STANDARD EQUIPMENT - 2007 Fleet/Non-Retail CT15643 Crew Cab 126.0" WB 4WD LT w/1LT

EXTERIOR

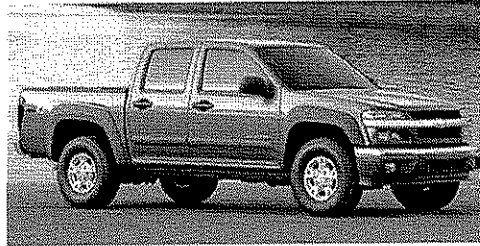
- Fascia, front Dark Smoke Gray
- Air dam, Ebony (Not included with (ZQ8) Sport Suspension Package.)
- Grille, color-keyed surround with Dark Smoke Gray mesh, chrome bar and composite headlamps (Standard with (Z85) Standard Suspension Package)
- Wheel flares, front and rear, small, Dark Smoke Gray (Standard on 4x4 Models with (Z85) Standard Suspension Package)
- Daytime Running Lamps, with automatic exterior lamp control
- Mirrors, outside power-adjustable, manual-folding
- Wipers, front intermittent with washers
- Tailgate, 2-position, locking

Report content is based on current data version referenced. Any performance-related calculations are offered solely as guidelines. Actual unit performance will depend on your operating conditions.

GM AutoBook, Data Version: 117.2, Data updated 9/12/2006 10:20:00 AM

©Copyright 1986-2005 Chrome Systems Corporation. All rights reserved.

Customer File:



2007 Fleet/Non-Retail Chevrolet Colorado Crew Cab 126.0" WB 4WD LT w/

STANDARD EQUIPMENT

STANDARD EQUIPMENT - 2007 Fleet/Non-Retail CT15643 Crew Cab 126.0" WB 4WD LT w/1LT

INTERIOR

- LT Decor
- Seats, front 60/40 split-bench with LT Deluxe Cloth, manual reclining with integral outboard head restraints, armrest with integral storage and dual cup holders (Upgradeable to (AR9) front bucket seats with LT Deluxe Cloth. Not available with (PCJ) Sun and Stars Package)
- Seats, second row 60/40 split-bench, flat-folding
- Floor covering, color-keyed carpeting
- Floor mats, rubberized-vinyl front, requires (B30) color-keyed carpeting (Includes (B33) rear floor mats)
- Steering wheel, leather-wrapped
- Steering column, Tilt-Wheel
- Theft-deterrent system, PASSLock
- Instrumentation, analog with speedometer, odometer with trip odometer, fuel level, engine temperature, tachometer and Driver Information Center
- Warning tones, headlamp on, key-in-ignition, driver safety belt unfasten, turn signal on and critical Driver Information Center active
- Tire Pressure Monitor
- Power Convenience Package with power windows and door locks, outside power-adjustable mirrors and Remote Keyless Entry
- Cruise control
- Air conditioning, single-zone manual
- Audio system, AM/FM stereo with CD/MP3 player, seek-and-scan, digital clock, auto-tone control, Radio Data System (RDS), automatic volume and TheftLock (Includes 6 speakers. Upgradeable to (UC6) AM/FM Stereo with 6-disc in-dash CD changer or (PDB) Sun and Sound Package)
- Power outlets, 2 auxiliary with covers, 12-volt
- Accents, interior, Nova Silver air outlets, center control stack and door handle bezels
- Door trim, integral armrests and driver- and front passenger-side map pockets with cloth inserts
- Mirror, inside rearview manual day/night (Upgradeable to (DC4) inside rearview manual day/night mirror with dual reading lights)

Report content is based on current data version referenced. Any performance-related calculations are offered solely as guidelines. Actual unit performance will depend on your operating conditions.

GM AutoBook, Data Version: 117.2, Data updated 9/12/2006 10:20:00 AM

©Copyright 1986-2005 Chrome Systems Corporation. All rights reserved.

Customer File:



2007 Fleet/Non-Retail Chevrolet Colorado Crew Cab 126.0" WB 4WD LT w/

STANDARD EQUIPMENT

STANDARD EQUIPMENT - 2007 Fleet/Non-Retail CT15643 Crew Cab 126.0" WB 4WD LT w/1LT

- Visors, driver and front passenger, padded with cloth, includes front passenger vanity mirror
- Assist handle, front passenger and rear outboard
- Coat hooks, driver- and passenger-side rear

MECHANICAL

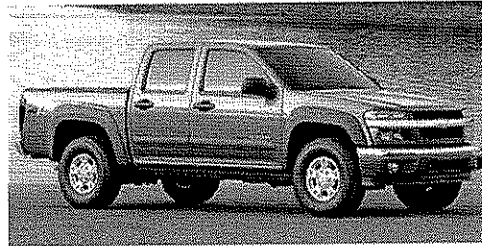
- Engine, 3.7L DOHC 5-cylinder MFI (242 hp [180.4 kW] @ 5600 rpm), 242 lb-ft [326.7 Nm] @ 4600 rpm) (Standard on 4x4 models. Refer to the Engine and Axle section for compatibility requirements. Must specify.)
- Transmission, 4-speed automatic, electronically controlled with overdrive (Refer to the Engine and Axle section for compatibility requirements. Must specify)
- Transfer case, Insta-Trac, electronic shift with dash-mounted controls, 4x4 models only
- Four wheel drive
- Rear axle, 3.73 ratio (Refer to the Engine and Axle section for compatibility requirements. Must specify)
- Battery, heavy-duty 690 cold-cranking amps, maintenance-free with rundown protection
- Alternator, 125 amps
- Pickup box, Fleetside, all-welded steel with double wall construction and corrosion protection with 6 cargo tie-downs, tailgate, locking, 2-position
- GVWR, 5300 lbs. (2404 kg) (Included and only available with 2WD (Z71) Off-Road Suspension Package. Standard on CT15643 4x4 model. Refer to the Engine and Axle section for compatibility requirements)
- Suspension Package, Standard
- Suspension, front independent with torsion bar (Standard on 4x4 models only)
- Suspension, rear semi-floating axle with 2-stage multi-leaf springs
- Front underbody shield (4x4 Models only)
- Tires, P235/75R15, all-season blackwall (4x4 models with (Z85) Standard Suspension Package only.)
- Tire, compact spare, located at rear underbody of vehicle (Not available with (Z71) Off-Road Suspension Package or (ZQ8) Sport Suspension Package. Upgradeable to appropriate full size spare tire.)
- Wheels, 4 - 15" x 6.5" (38.1 cm x 16.5 cm) aluminum (Requires (Z85) Standard Suspension Package)
- Steering, power, rack-and-pinion
- Brakes, 4-wheel antilock, front disc/rear drum

Report content is based on current data version referenced. Any performance-related calculations are offered solely as guidelines. Actual unit performance will depend on your operating conditions.

GM AutoBook, Data Version: 117.2, Data updated 9/12/2006 10:20:00 AM

©Copyright 1986-2005 Chrome Systems Corporation. All rights reserved.

Customer File:



2007 Fleet/Non-Retail Chevrolet Colorado Crew Cab 126.0" WB 4WD LT w/

STANDARD EQUIPMENT

STANDARD EQUIPMENT - 2007 Fleet/Non-Retail CT15643 Crew Cab 126.0" WB 4WD LT w/1LT

SAFETY

- Brakes, 4-wheel antilock, front disc/rear drum
- Air bags, frontal, driver and right-front passenger with Passenger Sensing System (Always use safety belts and the correct child restraints for your child's age and size. Even in vehicles equipped with air bags and the Passenger Sensing System, children are safer when properly secured in a rear seat. Never place a rear-facing infant restraint in the front seat of any vehicle equipped with an active frontal air bag. See the vehicle's Owner's Manual and child safety seat instructions for more safety information.)
- Safety belts, 3-point, driver and right-front passenger, adjustable (center front position lap belt with bench seat only)
- Safety belts, 3-point, rear, all seating positions
- LATCH system (Lower Anchors and Top tethers for CHildren), for child safety seats
- Door locks, child security rear
- Daytime Running Lamps, with automatic exterior lamp control

Report content is based on current data version referenced. Any performance-related calculations are offered solely as guidelines. Actual unit performance will depend on your operating conditions.

GM AutoBook, Data Version: 117.2, Data updated 9/12/2006 10:20:00 AM
©Copyright 1986-2005 Chrome Systems Corporation. All rights reserved.

Customer File:

CLASS 9 TRUCK
 Small Pickup, 2 Wheel Drive,
 3500 GVWR, Short Bed

070-48-09-001

Vendor Name: Bill Kelley Inc.

Manufacturer / Brand GM Chevrolet
 Delivery _____
 Model Name & Number Colorado / CS15403

Standard Equipment Requirements:

Engine	MIN: 143 HP 154 TORQUE
Transmission	Automatic
Steering	Power
Brakes	Power
Radio	AM/FM
Glass	All Tinted
Mirrors	Left & Right Outside
License Plate Mounts	Front & Rear
Cargo Box	Fleetside
Bumper	Rear Step Factory Installed
Tires	All Season
Spare Tire	Included - w/Jack
Air Conditioning	Installed
Front Seat	Bench
Rubber Floor Covering	Installed

Price Each Gasoline \$ 10369.50 *15000 + Fuel eval = 25369.50*

EPA HGWAY	EPA CITY
27	20

Delete Floor Mats (Deduct)	_____→	\$ -
Manual Transmission w/Overdrive (Deduct)	_____→	\$ - 876.00
FOB Dealership: (Deduct)	_____→	\$ _____
FOB Other than Metro Charleston - Per Mile	_____→	\$ _____



2007 Fleet/Non-Retail Chevrolet Colorado Reg Cab 111.2" WB 2WD Work T

STANDARD EQUIPMENT

STANDARD EQUIPMENT - 2007 Fleet/Non-Retail CS15403 Reg Cab 111.2" WB 2WD Work Truck

EXTERIOR

- Bumpers, front and rear chrome with a Dark Smoke Gray pad on the rear step-style bumper
- Fascia, front Dark Smoke Gray
- Air dam, Ebony
- Grille, chrome bar with Dark Smoke Gray surround
- Daytime Running Lamps, with automatic exterior lamp control
- Mirrors, outside manual, manual-folding
- Wipers, front intermittent with washers
- Regular production accessory, pickup bed mat (2WD models with (LLV) 2.9L DOHC 4-cylinder MFI engine only. See (R6G) for fleet and government only delete option. For additional GM Accessory Offerings and Installation, please contact your local GM Accessory Distributor Installer (ADI).)
- Tailgate, 2-position, locking

Report content is based on current data version referenced. Any performance-related calculations are offered solely as guidelines. Actual unit performance will depend on your operating conditions.

GM AutoBook, Data Version: 117.2, Data updated 9/12/2006 10:20:00 AM
©Copyright 1986-2005 Chrome Systems Corporation. All rights reserved.

Customer File:



2007 Fleet/Non-Retail Chevrolet Colorado Reg Cab 111.2" WB 2WD Work T

STANDARD EQUIPMENT

STANDARD EQUIPMENT - 2007 Fleet/Non-Retail CS15403 Reg Cab 111.2" WB 2WD Work Truck

INTERIOR

- LS decor
- Seats, front 60/40 split-bench with vinyl, integral outboard head restraints and dual cup holders (Upgradeable to (92D) Medium Pewter LS cloth trim)
- Floor covering, full-width rubberized-vinyl (Upgradeable to (B30) color-keyed carpeted floor covering)
- Steering wheel, 4-spoke Deluxe
- Steering column, Tilt-Wheel
- Theft-deterrent system, PASSLock
- Instrumentation, analog with speedometer, odometer with trip odometer, fuel level, engine temperature, tachometer and Driver Information Center
- Warning tones, headlamp on, key-in-ignition, driver safety belt unfasten, turn signal on and critical Driver Information Center active
- Tire Pressure Monitor
- Door locks, manual
- Windows, manual driver and front passenger
- Cruise control
- Air conditioning, single-zone manual
- Audio system, AM/FM stereo with seek-and-scan and digital clock (Upgradeable to (US8) AM/FM stereo with CD/MP3 player)
- Power outlets, 2 auxiliary with covers, 12-volt
- Door trim, integral armrests and driver- and front passenger-side map pockets
- Mirror, inside rearview manual day/night
- Visors, driver and front passenger, padded with cloth, includes front passenger vanity mirror
- Coat hooks, driver- and passenger-side rear

Report content is based on current data version referenced. Any performance-related calculations are offered solely as guidelines. Actual unit performance will depend on your operating conditions.

GM AutoBook, Data Version: 117.2, Data updated 9/12/2006 10:20:00 AM
©Copyright 1986-2005 Chrome Systems Corporation. All rights reserved.
Customer File:



2007 Fleet/Non-Retail Chevrolet Colorado Reg Cab 111.2" WB 2WD Work T

STANDARD EQUIPMENT

STANDARD EQUIPMENT - 2007 Fleet/Non-Retail CS15403 Reg Cab 111.2" WB 2WD Work Truck

MECHANICAL

- Engine, 2.9L DOHC 4-cylinder MFI (185 hp [137.9 kW] @ 5600 rpm), 190 lb-ft [263.2 Nm] @ 2800 rpm) (Refer to the Engine and Axle section for compatibility requirements. Must specify. Upgradeable to (LLR) 3.7L DOHC 4-cylinder engine)
- Transmission, 5-speed manual with overdrive (Not available with (LLR) 3.7L 5-cylinder engine. Upgradeable to (M30) 4-speed automatic transmission Refer to the Engine and Axle section for compatibility requirements)
- Rear wheel drive
- Rear axle, 3.73 ratio (Refer to the Engine and Axle section for compatibility requirements. Must specify)
- Battery, heavy-duty 690 cold-cranking amps, maintenance-free with rundown protection
- Alternator, 125 amps
- Pickup box, Fleetside, all-welded steel with double wall construction and corrosion protection with 6 cargo tie-downs, tailgate, locking, 2-position
- Regular production accessory, Trailer hitch, includes wiring harness (2WD models with (LLV) 2.9L DOHC 4-cylinder MFI engine only. See (R6G) for fleet and government only delete option. For additional GM Accessory Offerings and Installation, please contact your local GM Accessory Distributor Installer (ADI).)
- GVWR, 4850 lbs. (2200 kg) (Standard on CS15403 2WD Regular Cab Models. Refer to the Engine and Axle section for compatibility requirements)
- Suspension Package, Standard
- Suspension, front independent with coil springs (2WD Models only)
- Suspension, rear semi-floating axle with 2-stage multi-leaf springs
- Tires, P205/75R15 all-season, blackwall (2WD models with (Z85) Standard Suspension Package only)
- Tire, compact spare, located at rear underbody of vehicle (Not available with (Z71) Off-Road Suspension Package or (ZQ8) Sport Suspension Package. Upgradeable to appropriate full size spare tire.)
- Wheels, 4 - 15" x 6" (38.1 cm x 15.2 cm) steel
- Steering, power, rack-and-pinion
- Brakes, 4-wheel antilock, front disc/rear drum

Report content is based on current data version referenced. Any performance-related calculations are offered solely as guidelines. Actual unit performance will depend on your operating conditions.

GM AutoBook, Data Version: 117.2, Data updated 9/12/2006 10:20:00 AM
©Copyright 1986-2005 Chrome Systems Corporation. All rights reserved.

Customer File:



2007 Fleet/Non-Retail Chevrolet Colorado Reg Cab 111.2" WB 2WD Work T

STANDARD EQUIPMENT

STANDARD EQUIPMENT - 2007 Fleet/Non-Retail CS15403 Reg Cab 111.2" WB 2WD Work Truck

SAFETY

- Brakes, 4-wheel antilock, front disc/rear drum
- Air bags, frontal, driver and right-front passenger with Passenger Sensing System (Always use safety belts and the correct child restraints for your child's age and size. Even in vehicles equipped with air bags and the Passenger Sensing System, children are safer when properly secured in a rear seat. Never place a rear-facing infant restraint in the front seat of any vehicle equipped with an active frontal air bag. See the vehicle's Owner's Manual and child safety seat instructions for more safety information.)
- Safety belts, 3-point, driver and right-front passenger, adjustable (center front position lap belt with bench seat only)
- Tether anchor, front, for child safety seats
- Daytime Running Lamps, with automatic exterior lamp control

Report content is based on current data version referenced. Any performance-related calculations are offered solely as guidelines. Actual unit performance will depend on your operating conditions.

GM AutoBook, Data Version: 117.2, Data updated 9/12/2006 10:20:00 AM
©Copyright 1986-2005 Chrome Systems Corporation. All rights reserved.

Customer File:

CLASS 10A TRUCK
 Mid Size Pickup
 Full Size Doors, 4 Door Crew Cab

070-048-10-010

Vendor Name: Bill Kelley Inc.

Manufacturer / Brand Chevrolet Gm
 Delivery _____
 Model Name & Number Colorado 1 CS15643

Standard Equipment Requirements:

Engine	MIN: 200 HP 225 TORQUE
Transmission	See pricing options below
Steering	Power
Brakes	Power
Radio	AM/FM
Glass	All Tinted
Mirrors	Left & Right Outside
License Plate Mounts	Front & Rear
Cargo Box	Fleetside
Bumper	Rear Step Factory Installed
Tires	All Season
Spare Tire	Included - w/Jack
Air Conditioning	Installed
Front Seat	Bench
Rubber Floor Covering	Installed

Price Each Gasoline \$ 76245.01 2WD 18631.26 4WD
176x208 + Fuel = 33892.09
 EVAL

- 2 Wheel Drive - Automatic Transmission
- 2 Wheel Drive - Manual Transmission NA
- 4 Wheel Drive - 6 sped Manual Transmission NA
- 4 Wheel Drive - Automatic Transmission

EPA HGWAY	EPA CITY
23	17

FOB Dealership: (Deduct) _____ → \$ _____
 FOB Other than Metro Charleston - Per Mile _____ \$ _____
 Powertrain Warranty 100,000 miles 5 years



2007 Fleet/Non-Retail Chevrolet Colorado Crew Cab 126.0" WB 2WD LT w/

STANDARD EQUIPMENT

STANDARD EQUIPMENT - 2007 Fleet/Non-Retail CS15643 Crew Cab 126.0" WB 2WD LT w/1LT

EXTERIOR

- Fascia, front Dark Smoke Gray
- Air dam, Ebony (Not included with (ZQ8) Sport Suspension Package.)
- Grille, color-keyed surround with Dark Smoke Gray mesh, chrome bar and composite headlamps (Standard with (Z85) Standard Suspension Package)
- Daytime Running Lamps, with automatic exterior lamp control
- Mirrors, outside power-adjustable, manual-folding
- Wipers, front intermittent with washers
- Tailgate, 2-position, locking

Report content is based on current data version referenced. Any performance-related calculations are offered solely as guidelines. Actual unit performance will depend on your operating conditions.

GM AutoBook, Data Version: 117.2, Data updated 9/12/2006 10:20:00 AM
©Copyright 1986-2005 Chrome Systems Corporation. All rights reserved.

Customer File:



2007 Fleet/Non-Retail Chevrolet Colorado Crew Cab 126.0" WB 2WD LT w/

STANDARD EQUIPMENT

STANDARD EQUIPMENT - 2007 Fleet/Non-Retail CS15643 Crew Cab 126.0" WB 2WD LT w/1LT

INTERIOR

- LT Decor
- Seats, front 60/40 split-bench with LT Deluxe Cloth, manual reclining with integral outboard head restraints, armrest with integral storage and dual cup holders (Upgradeable to (AR9) front bucket seats with LT Deluxe Cloth. Not available with (PCJ) Sun and Stars Package)
- Seats, second row 60/40 split-bench, flat-folding
- Floor covering, color-keyed carpeting
- Floor mats, rubberized-vinyl front, requires (B30) color-keyed carpeting (Includes (B33) rear floor mats)
- Steering wheel, leather-wrapped
- Steering column, Tilt-Wheel
- Theft-deterrent system, PASSLock
- Instrumentation, analog with speedometer, odometer with trip odometer, fuel level, engine temperature, tachometer and Driver Information Center
- Warning tones, headlamp on, key-in-ignition, driver safety belt unfasten, turn signal on and critical Driver Information Center active
- Tire Pressure Monitor
- Power Convenience Package with power windows and door locks, outside power-adjustable mirrors and Remote Keyless Entry
- Cruise control
- Air conditioning, single-zone manual
- Audio system, AM/FM stereo with CD/MP3 player, seek-and-scan, digital clock, auto-tone control, Radio Data System (RDS), automatic volume and TheftLock (Includes 6 speakers. Upgradeable to (UC6) AM/FM Stereo with 6-disc in-dash CD changer or (PDB) Sun and Sound Package)
- Power outlets, 2 auxiliary with covers, 12-volt
- Accents, interior, Nova Silver air outlets, center control stack and door handle bezels
- Door trim, integral armrests and driver- and front passenger-side map pockets with cloth inserts
- Mirror, inside rearview manual day/night (Upgradeable to (DC4) inside rearview manual day/night mirror with dual reading lights)

Report content is based on current data version referenced. Any performance-related calculations are offered solely as guidelines. Actual unit performance will depend on your operating conditions.

GM AutoBook, Data Version: 117.2, Data updated 9/12/2006 10:20:00 AM
©Copyright 1986-2005 Chrome Systems Corporation. All rights reserved.

Customer File:



2007 Fleet/Non-Retail Chevrolet Colorado Crew Cab 126.0" WB 2WD LT w/

STANDARD EQUIPMENT

STANDARD EQUIPMENT - 2007 Fleet/Non-Retail CS15643 Crew Cab 126.0" WB 2WD LT w/1LT

- Visors, driver and front passenger, padded with cloth, includes front passenger vanity mirror
- Assist handle, front passenger and rear outboard
- Coat hooks, driver- and passenger-side rear

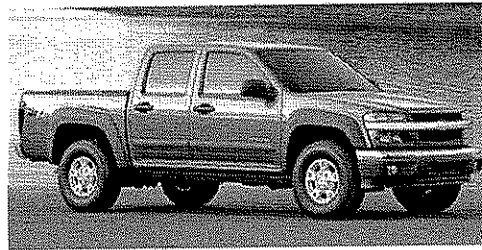
MECHANICAL

- Engine, 2.9L DOHC 4-cylinder MFI (185 hp [137.9 kW] @ 5600 rpm), 190 lb-ft [263.2 Nm] @ 2800 rpm) (2WD models only. Refer to the Engine and Axle section for compatibility requirements. Must specify. Upgradeable to (LLR) 3.7L DOHC 5-cylinder engine)
- Transmission, 4-speed automatic, electronically controlled with overdrive (Refer to the Engine and Axle section for compatibility requirements. Must specify)
- Rear wheel drive
- Rear axle, 3.73 ratio (Refer to the Engine and Axle section for compatibility requirements. Must specify)
- Battery, heavy-duty 690 cold-cranking amps, maintenance-free with rundown protection
- Alternator, 125 amps
- Pickup box, Fleetside, all-welded steel with double wall construction and corrosion protection with 6 cargo tie-downs, tailgate, locking, 2-position
- GVWR, 5000 lbs. (2268 kg) (Standard on CS15643 model and (Z85) Standard Suspension Package. Refer to the Engine and Axle section for compatibility requirements)
- Suspension Package, Standard
- Suspension, front independent with coil springs (Included on 2WD models with (Z85) Standard Suspension Package)
- Suspension, rear semi-floating axle with 2-stage multi-leaf springs
- Tires, P225/75R15 all-season, blackwall (2WD models only. Requires (Z85) Standard Suspension Package and includes (PF3) 4 - 15" x 6.5" (38.1 cm x 16.5 cm) aluminum wheels)
- Tire, compact spare, located at rear underbody of vehicle (Not available with (Z71) Off-Road Suspension Package or (ZQ8) Sport Suspension Package. Upgradeable to appropriate full size spare tire.)
- Wheels, 4 - 15" x 6.5" (38.1 cm x 16.5 cm) aluminum (Requires (Z85) Standard Suspension Package)
- Steering, power, rack-and-pinion
- Brakes, 4-wheel antilock, front disc/rear drum

Report content is based on current data version referenced. Any performance-related calculations are offered solely as guidelines. Actual unit performance will depend on your operating conditions.

GM AutoBook, Data Version: 117.2, Data updated 9/12/2006 10:20:00 AM
©Copyright 1986-2005 Chrome Systems Corporation. All rights reserved.

Customer File:



2007 Fleet/Non-Retail Chevrolet Colorado Crew Cab 126.0" WB 2WD LT w/

STANDARD EQUIPMENT

STANDARD EQUIPMENT - 2007 Fleet/Non-Retail CS15643 Crew Cab 126.0" WB 2WD LT w/1LT

SAFETY

- Brakes, 4-wheel antilock, front disc/rear drum
- Air bags, frontal, driver and right-front passenger with Passenger Sensing System (Always use safety belts and the correct child restraints for your child's age and size. Even in vehicles equipped with air bags and the Passenger Sensing System, children are safer when properly secured in a rear seat. Never place a rear-facing infant restraint in the front seat of any vehicle equipped with an active frontal air bag. See the vehicle's Owner's Manual and child safety seat instructions for more safety information.)
- Safety belts, 3-point, driver and right-front passenger, adjustable (center front position lap belt with bench seat only)
- Safety belts, 3-point, rear, all seating positions
- LATCH system (Lower Anchors and Top tethers for CHildren), for child safety seats
- Door locks, child security rear
- Daytime Running Lamps, with automatic exterior lamp control

Report content is based on current data version referenced. Any performance-related calculations are offered solely as guidelines. Actual unit performance will depend on your operating conditions.

GM AutoBook, Data Version: 117.2, Data updated 9/12/2006 10:20:00 AM
©Copyright 1986-2005 Chrome Systems Corporation. All rights reserved.

Customer File:



2007 Fleet/Non-Retail Chevrolet Colorado Crew Cab 126.0" WB 4WD LT w/
STANDARD EQUIPMENT

STANDARD EQUIPMENT - 2007 Fleet/Non-Retail CT15643 Crew Cab 126.0" WB 4WD LT w/1LT

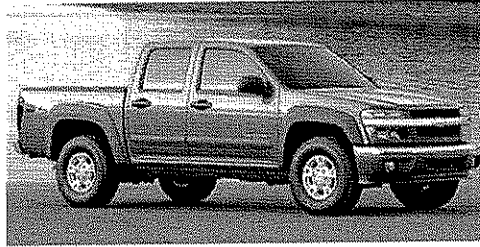
EXTERIOR

- Fascia, front Dark Smoke Gray
- Air dam, Ebony (Not included with (ZQ8) Sport Suspension Package.)
- Grille, color-keyed surround with Dark Smoke Gray mesh, chrome bar and composite headlamps (Standard with (Z85) Standard Suspension Package)
- Wheel flares, front and rear, small, Dark Smoke Gray (Standard on 4x4 Models with (Z85) Standard Suspension Package)
- Daytime Running Lamps, with automatic exterior lamp control
- Mirrors, outside power-adjustable, manual-folding
- Wipers, front intermittent with washers
- Tailgate, 2-position, locking

Report content is based on current data version referenced. Any performance-related calculations are offered solely as guidelines. Actual unit performance will depend on your operating conditions.

GM AutoBook, Data Version: 117.2, Data updated 9/12/2006 10:20:00 AM
©Copyright 1986-2005 Chrome Systems Corporation. All rights reserved.

Customer File:



2007 Fleet/Non-Retail Chevrolet Colorado Crew Cab 126.0" WB 4WD LT w/

STANDARD EQUIPMENT

STANDARD EQUIPMENT - 2007 Fleet/Non-Retail CT15643 Crew Cab 126.0" WB 4WD LT w/1LT

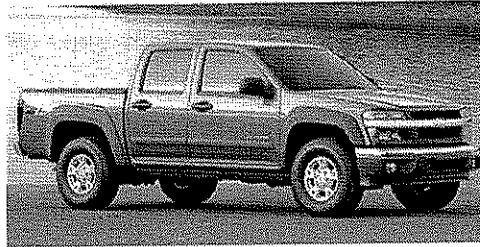
INTERIOR

- LT Decor
- Seats, front 60/40 split-bench with LT Deluxe Cloth, manual reclining with integral outboard head restraints, armrest with integral storage and dual cup holders (Upgradeable to (AR9) front bucket seats with LT Deluxe Cloth. Not available with (PCJ) Sun and Stars Package)
- Seats, second row 60/40 split-bench, flat-folding
- Floor covering, color-keyed carpeting
- Floor mats, rubberized-vinyl front, requires (B30) color-keyed carpeting (Includes (B33) rear floor mats)
- Steering wheel, leather-wrapped
- Steering column, Tilt-Wheel
- Theft-deterrent system, PASSLock
- Instrumentation, analog with speedometer, odometer with trip odometer, fuel level, engine temperature, tachometer and Driver Information Center
- Warning tones, headlamp on, key-in-ignition, driver safety belt unfasten, turn signal on and critical Driver Information Center active
- Tire Pressure Monitor
- Power Convenience Package with power windows and door locks, outside power-adjustable mirrors and Remote Keyless Entry
- Cruise control
- Air conditioning, single-zone manual
- Audio system, AM/FM stereo with CD/MP3 player, seek-and-scan, digital clock, auto-tone control, Radio Data System (RDS), automatic volume and TheftLock (Includes 6 speakers. Upgradeable to (UC6) AM/FM Stereo with 6-disc in-dash CD changer or (PDB) Sun and Sound Package)
- Power outlets, 2 auxiliary with covers, 12-volt
- Accents, interior, Nova Silver air outlets, center control stack and door handle bezels
- Door trim, integral armrests and driver- and front passenger-side map pockets with cloth inserts
- Mirror, inside rearview manual day/night (Upgradeable to (DC4) inside rearview manual day/night mirror with dual reading lights)

Report content is based on current data version referenced. Any performance-related calculations are offered solely as guidelines. Actual unit performance will depend on your operating conditions.

GM AutoBook, Data Version: 117.2, Data updated 9/12/2006 10:20:00 AM
©Copyright 1986-2005 Chrome Systems Corporation. All rights reserved.

Customer File:



2007 Fleet/Non-Retail Chevrolet Colorado Crew Cab 126.0" WB 4WD LT w/

STANDARD EQUIPMENT

STANDARD EQUIPMENT - 2007 Fleet/Non-Retail CT15643 Crew Cab 126.0" WB 4WD LT w/1LT

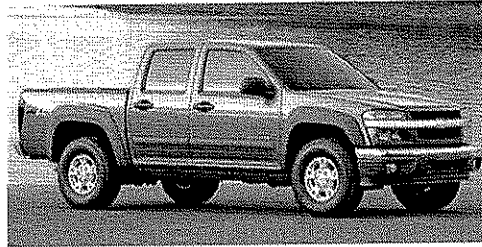
- Visors, driver and front passenger, padded with cloth, includes front passenger vanity mirror
- Assist handle, front passenger and rear outboard
- Coat hooks, driver- and passenger-side rear

MECHANICAL

- Engine, 3.7L DOHC 5-cylinder MFI (242 hp [180.4 kW] @ 5600 rpm), 242 lb-ft [326.7 Nm] @ 4600 rpm) (Standard on 4x4 models. Refer to the Engine and Axle section for compatibility requirements. Must specify.)
- Transmission, 4-speed automatic, electronically controlled with overdrive (Refer to the Engine and Axle section for compatibility requirements. Must specify)
- Transfer case, Insta-Trac, electronic shift with dash-mounted controls, 4x4 models only
- Four wheel drive
- Rear axle, 3.73 ratio (Refer to the Engine and Axle section for compatibility requirements. Must specify)
- Battery, heavy-duty 690 cold-cranking amps, maintenance-free with rundown protection
- Alternator, 125 amps
- Pickup box, Fleetside, all-welded steel with double wall construction and corrosion protection with 6 cargo tie-downs, tailgate, locking, 2-position
- GVWR, 5300 lbs. (2404 kg) (Included and only available with 2WD (Z71) Off-Road Suspension Package. Standard on CT15643 4x4 model. Refer to the Engine and Axle section for compatibility requirements)
- Suspension Package, Standard
- Suspension, front independent with torsion bar (Standard on 4x4 models only)
- Suspension, rear semi-floating axle with 2-stage multi-leaf springs
- Front underbody shield (4x4 Models only)
- Tires, P235/75R15, all-season blackwall (4x4 models with (Z85) Standard Suspension Package only.)
- Tire, compact spare, located at rear underbody of vehicle (Not available with (Z71) Off-Road Suspension Package or (ZQ8) Sport Suspension Package. Upgradeable to appropriate full size spare tire.)
- Wheels, 4 - 15" x 6.5" (38.1 cm x 16.5 cm) aluminum (Requires (Z85) Standard Suspension Package)
- Steering, power, rack-and-pinion
- Brakes, 4-wheel antilock, front disc/rear drum

Report content is based on current data version referenced. Any performance-related calculations are offered solely as guidelines. Actual unit performance will depend on your operating conditions.

GM AutoBook, Data Version: 117.2, Data updated 9/12/2006 10:20:00 AM
©Copyright 1986-2005 Chrome Systems Corporation. All rights reserved.
Customer File:



2007 Fleet/Non-Retail Chevrolet Colorado Crew Cab 126.0" WB 4WD LT w/

STANDARD EQUIPMENT

STANDARD EQUIPMENT - 2007 Fleet/Non-Retail CT15643 Crew Cab 126.0" WB 4WD LT w/1LT

SAFETY

- Brakes, 4-wheel antilock, front disc/rear drum
- Air bags, frontal, driver and right-front passenger with Passenger Sensing System (Always use safety belts and the correct child restraints for your child's age and size. Even in vehicles equipped with air bags and the Passenger Sensing System, children are safer when properly secured in a rear seat. Never place a rear-facing infant restraint in the front seat of any vehicle equipped with an active frontal air bag. See the vehicle's Owner's Manual and child safety seat instructions for more safety information.)
- Safety belts, 3-point, driver and right-front passenger, adjustable (center front position lap belt with bench seat only)
- Safety belts, 3-point, rear, all seating positions
- LATCH system (Lower Anchors and Top tethers for CHildren), for child safety seats
- Door locks, child security rear
- Daytime Running Lamps, with automatic exterior lamp control

Report content is based on current data version referenced. Any performance-related calculations are offered solely as guidelines. Actual unit performance will depend on your operating conditions.

GM AutoBook, Data Version: 117.2, Data updated 9/12/2006 10:20:00 AM
©Copyright 1986-2005 Chrome Systems Corporation. All rights reserved.

Customer File:

CLASS 12 TRUCK
 Large Pickup, 2 Wheel Drive
 6000 GVWR, Short Bed

070-48-12-001

Vendor Name: Bill Kelley Inc.

Manufacturer / Brand GM / Chevrolet
 Delivery _____
 Model Name & Number Silverado / CC1570J

Standard Equipment Requirements:

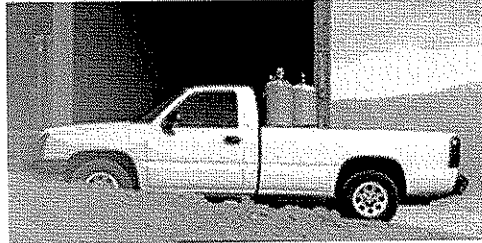
Engine	MIN 195 HP 260 TORQUE
Transmission	Automatic
Steering	Power
Brakes	Power
Radio	AM/FM
Glass	All Tinted
Mirrors	Left & Right Outside
License Plate Mounts	Front & Rear
Cargo Box	Fleetside
Bumper	Rear Step Factory Installed
Tires	All Season
Spare Tire	Full Size w/Jack
Air Conditioning	Installed
Front Seat	Bench
Rubber Floor Covering	Installed

Price Each Gasoline \$ 17391.79 +
 Hybrid \$ NA

18750
 Fuel
 eval = 36141.71

EPA HGWAY	EPA CITY
21	16

Manual Transmission w/Overdrive (Deduct)	_____ →	\$ - 876
Delete Truck Bed (Deduct)	_____ →	\$ - NA
FOB Dealership: (Deduct)	_____ →	\$ - NA
FOB Other than Metro Charleston - Per Mile	_____ →	\$
		\$



2007 Fleet/Non-Retail Chevrolet Silverado 1500 Classic Reg Cab 119.0" WB

STANDARD EQUIPMENT

STANDARD EQUIPMENT - 2007 Fleet/Non-Retail CC15703 Reg Cab 119.0" WB 2WD Work Truck

EPA FUEL ECONOMY RATINGS

- City 16/hwy 23 (4.3L engine/5-speed manual trans)
- City 16/hwy 21 (4.3L engine/4-speed auto trans)
- City 16/hwy 21 (4.8L engine/4-speed auto trans)
- City 16/hwy 21 (5.3L engine/4-speed auto trans)
- City 16/hwy 21 (5.3L bi-fuel engine/4-speed auto trans w/gas)
- City 12/hwy 16 (5.3L bi-fuel engine/4-speed auto trans w/E85 gas/ethanol mix)

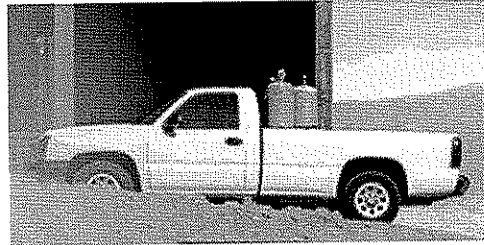
EXTERIOR

- Paint, solid
- Bumper, front chrome with Gray lower
- Bumper, rear painted, step-style with pad
- Air dam, Gray
- Grille, Gray surround with chrome accent bar
- Headlamps, dual halogen composite with automatic exterior lamp control and flash-to-pass feature
- Daytime Running Lamps, with automatic exterior lamp control
- Lamps, dual cargo area lamps
- Mirrors, outside manual, Black, manual-folding
- Glass, Solar-Ray light-tinted, all windows
- Wipers, front intermittent wet-arm with pulse washers

Report content is based on current data version referenced. Any performance-related calculations are offered solely as guidelines. Actual unit performance will depend on your operating conditions.

GM AutoBook, Data Version: 117.2, Data updated 9/12/2006 10:20:00 AM
©Copyright 1986-2005 Chrome Systems Corporation. All rights reserved.

Customer File:



2007 Fleet/Non-Retail Chevrolet Silverado 1500 Classic Reg Cab 119.0" WB

STANDARD EQUIPMENT

STANDARD EQUIPMENT - 2007 Fleet/Non-Retail CC15703 Reg Cab 119.0" WB 2WD Work Truck

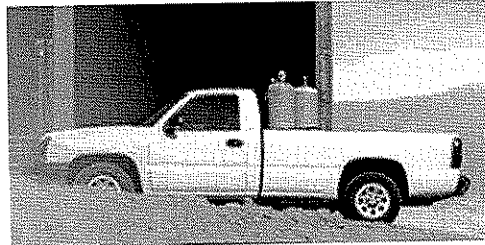
INTERIOR

- Seat trim, vinyl
- Seats, front 40/20/40 split-bench, 3-passenger, driver and front passenger manual reclining with outboard head restraints
- Floor covering, Black rubberized-vinyl
- Steering column, Tilt-Wheel, adjustable with brake/transmission shift interlock
- Steering wheel, includes theft-deterrent locking feature
- Theft-deterrent system, PASSlock II
- Instrumentation, analog with speedometer, odometer with trip odometer, fuel level, voltmeter, engine temperature, oil pressure and tachometer
- Driver Information Center that monitors numerous different systems depending on vehicle equipment
- Warning tones, headlamp on, key-in-ignition, driver and passenger buckle up reminder and turn signal on
- Air Conditioning Delete, provides heater only (Requires Regular Cab models.)
- Audio system, AM/FM stereo with seek-and-scan and digital clock
- Audio system feature, 4-speaker system
- Cup holders, front (Also includes rear cupholders on Extended and Crew Cab models.)
- Cigarette lighter, on instrument panel
- Power outlets, 2 auxiliary instrument panel-mounted with covers, 12-volt
- Mirror, inside rearview manual day/night
- Visors, driver and front passenger, padded with cloth trim, extenders, pocket on driver-side and vanity mirror on passenger-side, Shale-colored
- Assist handle, front passenger (Also includes outboard rear assist handle on Extended or Crew Cab models.)
- Coat hook, driver-side rear (Also includes passenger-side coat hook on Extended and Crew Cab models.)
- Lighting, interior with dome and reading lights, illuminated entry feature and backlit instrument panel switches

Report content is based on current data version referenced. Any performance-related calculations are offered solely as guidelines. Actual unit performance will depend on your operating conditions.

GM AutoBook, Data Version: 117.2, Data updated 9/12/2006 10:20:00 AM
©Copyright 1986-2005 Chrome Systems Corporation. All rights reserved.

Customer File:



2007 Fleet/Non-Retail Chevrolet Silverado 1500 Classic Reg Cab 119.0" WB

STANDARD EQUIPMENT

STANDARD EQUIPMENT - 2007 Fleet/Non-Retail CC15703 Reg Cab 119.0" WB 2WD Work Truck

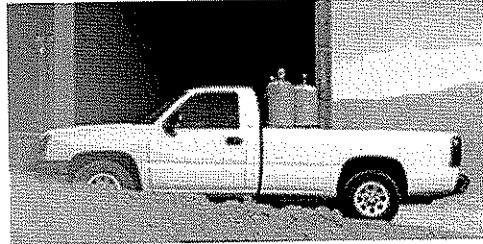
MECHANICAL

- Engine, Vortec 4.3L V6 MFI (195 hp [145.4 kW] @ 4600 rpm, 260 lb-ft of torque [351.0 N-m] @ 2800 rpm) (Required and standard on C*15703, C*15903, and CC15753 Models only. Not available with (VYU) Snow Plow Prep Package or or (Z82) heavy-duty, trailering equipment.)
- Transmission, 5-speed manual with overdrive (Requires Regular Cab Models and (LU3) Vortec 4.3L V6 MFI engine.)
- Rear wheel drive
- Battery, heavy-duty 600 cold-cranking amps, maintenance-free with rundown protection and retained accessory power
- Alternator, 145 amps
- Recovery hooks, front, frame-mounted
- Frame, hydroformed ladder-type
- Pickup box, Fleetside
- GVWR, 6100 lbs. (2767 kg) (Requires CC15703 models.)
- Suspension Package, Solid Smooth Ride, includes 35mm piston twin tube shocks (Not available with (PDU) Light Duty Power Package.)
- Suspension, front independent (2WD models include coil springs. 4x4 models include torsion bars.)
- Suspension, rear 2-stage multi-leaf springs, semi-elliptic
- Tires, P245/70R17 all-season, blackwall (Requires 2WD models.)
- Tire, full-size spare, 17" (43.2 cm) steel, located at rear underbody of vehicle
- Wheels, 4 - 17" x 7" (43.2 cm x 17.8 cm) 6-lug painted steel, includes painted center caps and steel spare
- Tire carrier, outside spare, winch-type mounted under frame at rear
- Steering, power
- Brakes, 4-wheel antilock, front disc/rear drum
- Exhaust, aluminized stainless-steel muffler and tailpipe
- Tools, mechanical jack and wheel wrench located in back of cab

Report content is based on current data version referenced. Any performance-related calculations are offered solely as guidelines. Actual unit performance will depend on your operating conditions.

GM AutoBook, Data Version: 117.2, Data updated 9/12/2006 10:20:00 AM
©Copyright 1986-2005 Chrome Systems Corporation. All rights reserved.

Customer File:



2007 Fleet/Non-Retail Chevrolet Silverado 1500 Classic Reg Cab 119.0" WB

STANDARD EQUIPMENT

STANDARD EQUIPMENT - 2007 Fleet/Non-Retail CC15703 Reg Cab 119.0" WB 2WD Work Truck

SAFETY

- Brakes, 4-wheel antilock, front disc/rear drum
- Air bags, frontal, driver and right-front passenger with Passenger Sensing System (Always use safety belts and the correct child restraints for your child's age and size. Even in vehicles equipped with air bags and the Passenger Sensing System, children are safer when properly secured in a rear seat. Never place a rear-facing infant restraint in the front seat of any vehicle equipped with an active frontal air bag. See the vehicle's Owner's Manual and child safety seat instructions for more safety information.)
- Daytime Running Lamps, with automatic exterior lamp control

Report content is based on current data version referenced. Any performance-related calculations are offered solely as guidelines. Actual unit performance will depend on your operating conditions.

GM AutoBook, Data Version: 117.2, Data updated 9/12/2006 10:20:00 AM
©Copyright 1986-2005 Chrome Systems Corporation. All rights reserved.

Customer File:

CLASS 13 TRUCK
 Large Pickup, 2 Wheel Drive
 6000 GVWR, Long Bed

070-48-13-001

Vendor Name: _____

Manufacturer / Brand Cum / Chevrolet
 Delivery _____
 Model Name & Number Silverado / CC15903

Standard Equipment Requirements:

Engine	MIN: 231 HP 293 TORQUE
Transmission	Automatic
Steering	Power
Brakes	Power
Radio	AM/FM
Glass	All Tinted
Mirrors	Left & Right Outside
License Plate Mounts	Front & Rear
Cargo Box	Fleetside
Bumper	Rear Step Factory Installed
Tires	All Season
Spare Tire	Full Size w/Jack
Air Conditioning	Installed
Front Seat	Bench
Rubber Floor Covering	Installed

Price Each Gasoline \$ 18721.22
 Price Each Dedicated Alternative Fuel \$ _____
 Price Each Bi-Fuel Alternative Fuel \$ _____

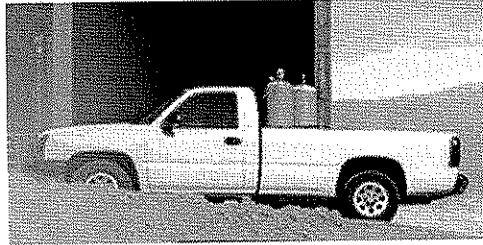
18750.0
 + Fuel EVAL = 37471.22

EPA
 HGWY
21

EPA
 CITY
14

Delete Floor Mats (Deduct) _____
 FOB Dealership: (Deduct) _____
 FOB Other than Metro Charleston - Per Mile _____

\$ - NA
 \$ - _____
 \$ _____
 \$ _____



2007 Fleet/Non-Retail Chevrolet Silverado 1500 Classic Reg Cab 133.0" WB

STANDARD EQUIPMENT

STANDARD EQUIPMENT - 2007 Fleet/Non-Retail CC15903 Reg Cab 133.0" WB 2WD Work Truck

EPA FUEL ECONOMY RATINGS

- City 16/hwy 23 (4.3L engine/5-speed manual trans)
- City 16/hwy 21 (4.3L engine/4-speed auto trans)
- City 16/hwy 21 (4.8L engine/4-speed auto trans)
- City 16/hwy 21 (5.3L engine/4-speed auto trans)
- City 16/hwy 21 (5.3L bi-fuel engine/4-speed auto trans w/gas)
- City 12/hwy 16 (5.3L bi-fuel engine/4-speed auto trans w/E85 gas/ethanol mix)

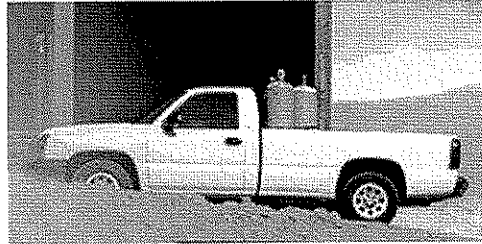
EXTERIOR

- Paint, solid
- Bumper, front chrome with Gray lower
- Bumper, rear painted, step-style with pad
- Air dam, Gray
- Grille, Gray surround with chrome accent bar
- Headlamps, dual halogen composite with automatic exterior lamp control and flash-to-pass feature
- Daytime Running Lamps, with automatic exterior lamp control
- Lamps, dual cargo area lamps
- Mirrors, outside manual, Black, manual-folding
- Glass, Solar-Ray light-tinted, all windows
- Wipers, front intermittent wet-arm with pulse washers

Report content is based on current data version referenced. Any performance-related calculations are offered solely as guidelines. Actual unit performance will depend on your operating conditions.

GM AutoBook, Data Version: 117.2, Data updated 9/12/2006 10:20:00 AM
©Copyright 1986-2005 Chrome Systems Corporation. All rights reserved.

Customer File:



2007 Fleet/Non-Retail Chevrolet Silverado 1500 Classic Reg Cab 133.0" WB

STANDARD EQUIPMENT

STANDARD EQUIPMENT - 2007 Fleet/Non-Retail CC15903 Reg Cab 133.0" WB 2WD Work Truck

INTERIOR

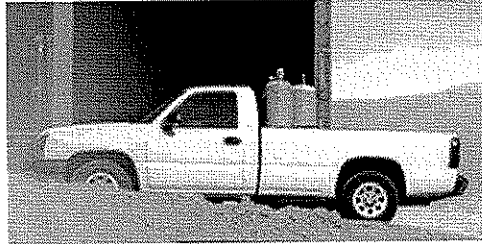
- Seat trim, vinyl
- Seats, front 40/20/40 split-bench, 3-passenger, driver and front passenger manual reclining with outboard head restraints
- Floor covering, Black rubberized-vinyl
- Steering column, Tilt-Wheel, adjustable with brake/transmission shift interlock
- Steering wheel, includes theft-deterrent locking feature
- Theft-deterrent system, PASSlock II
- Instrumentation, analog with speedometer, odometer with trip odometer, fuel level, voltmeter, engine temperature, oil pressure and tachometer
- Driver Information Center that monitors numerous different systems depending on vehicle equipment
- Warning tones, headlamp on, key-in-ignition, driver and passenger buckle up reminder and turn signal on
- Air Conditioning Delete, provides heater only (Requires Regular Cab models.)
- Audio system, AM/FM stereo with seek-and-scan and digital clock
- Audio system feature, 4-speaker system
- Cup holders, front (Also includes rear cupholders on Extended and Crew Cab models.)
- Cigarette lighter, on instrument panel
- Power outlets, 2 auxiliary instrument panel-mounted with covers, 12-volt
- Mirror, inside rearview manual day/night
- Visors, driver and front passenger, padded with cloth trim, extenders, pocket on driver-side and vanity mirror on passenger-side, Shale-colored
- Assist handle, front passenger (Also includes outboard rear assist handle on Extended or Crew Cab models.)
- Coat hook, driver-side rear (Also includes passenger-side coat hook on Extended and Crew Cab models.)
- Lighting, interior with dome and reading lights, illuminated entry feature and backlit instrument panel switches

Report content is based on current data version referenced. Any performance-related calculations are offered solely as guidelines. Actual unit performance will depend on your operating conditions.

GM AutoBook, Data Version: 117.2, Data updated 9/12/2006 10:20:00 AM

©Copyright 1986-2005 Chrome Systems Corporation. All rights reserved.

Customer File:



2007 Fleet/Non-Retail Chevrolet Silverado 1500 Classic Reg Cab 133.0" WB

STANDARD EQUIPMENT

STANDARD EQUIPMENT - 2007 Fleet/Non-Retail CC15903 Reg Cab 133.0" WB 2WD Work Truck

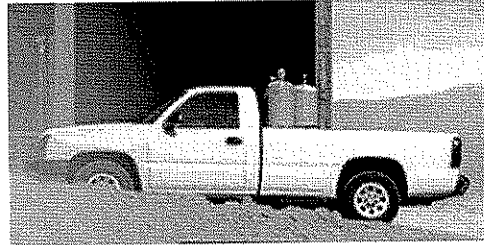
MECHANICAL

- Engine, Vortec 4.3L V6 MFI (195 hp [145.4 kW] @ 4600 rpm, 260 lb-ft of torque [351.0 N-m] @ 2800 rpm) (Required and standard on C*15703, C*15903, and CC15753 Models only. Not available with (VYU) Snow Plow Prep Package or or (Z82) heavy-duty, trailering equipment.)
- Transmission, 5-speed manual with overdrive (Requires Regular Cab Models and (LU3) Vortec 4.3L V6 MFI engine.)
- Rear wheel drive
- Battery, heavy-duty 600 cold-cranking amps, maintenance-free with rundown protection and retained accessory power
- Alternator, 145 amps
- Recovery hooks, front, frame-mounted
- Frame, hydroformed ladder-type
- Pickup box, Fleetside
- GVWR, 6400 lbs. (2903 kg) (Requires C*15903, CK15703, CK15753, C*15953, or CK15553 models.)
- Suspension Package, Solid Smooth Ride, includes 35mm piston twin tube shocks (Not available with (PDU) Light Duty Power Package.)
- Suspension, front independent (2WD models include coil springs. 4x4 models include torsion bars.)
- Suspension, rear 2-stage multi-leaf springs, semi-elliptic
- Tires, P245/70R17 all-season, blackwall (Requires 2WD models.)
- Tire, full-size spare, 17" (43.2 cm) steel, located at rear underbody of vehicle
- Wheels, 4 - 17" x 7" (43.2 cm x 17.8 cm) 6-lug painted steel, includes painted center caps and steel spare
- Tire carrier, outside spare, winch-type mounted under frame at rear
- Steering, power
- Brakes, 4-wheel antilock, front disc/rear drum
- Exhaust, aluminized stainless-steel muffler and tailpipe
- Tools, mechanical jack and wheel wrench located in back of cab

Report content is based on current data version referenced. Any performance-related calculations are offered solely as guidelines. Actual unit performance will depend on your operating conditions.

GM AutoBook, Data Version: 117.2, Data updated 9/12/2006 10:20:00 AM
©Copyright 1986-2005 Chrome Systems Corporation. All rights reserved.

Customer File:



2007 Fleet/Non-Retail Chevrolet Silverado 1500 Classic Reg Cab 133.0" WB

STANDARD EQUIPMENT

STANDARD EQUIPMENT - 2007 Fleet/Non-Retail CC15903 Reg Cab 133.0" WB 2WD Work Truck

SAFETY

- Brakes, 4-wheel antilock, front disc/rear drum
- Air bags, frontal, driver and right-front passenger with Passenger Sensing System (Always use safety belts and the correct child restraints for your child's age and size. Even in vehicles equipped with air bags and the Passenger Sensing System, children are safer when properly secured in a rear seat. Never place a rear-facing infant restraint in the front seat of any vehicle equipped with an active frontal air bag. See the vehicle's Owner's Manual and child safety seat instructions for more safety information.)
- Daytime Running Lamps, with automatic exterior lamp control

Report content is based on current data version referenced. Any performance-related calculations are offered solely as guidelines. Actual unit performance will depend on your operating conditions.

GM AutoBook, Data Version: 117.2, Data updated 9/12/2006 10:20:00 AM
©Copyright 1986-2005 Chrome Systems Corporation. All rights reserved.

Customer File:

CLASS 10 TRUCK
 Small Pickup, 2 Wheel Drive, Extended Cab,
 4200 GVWR, Short Bed

070-48-10--001

Vendor Name: Bill Kelley Inc.

Manufacturer / Brand: Gm Chevrolet
 Delivery: _____
 Model Name & Number: Colorado - C515653

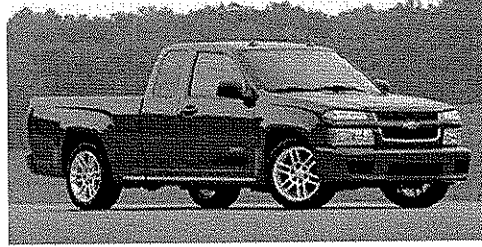
Standard Equipment Requirements:

Engine	MIN: 200 HP 225 TORQUE
Transmission	Automatic
Steering	Power
Brakes	Power
Radio	AM/FM
Glass	All Tinted
Mirrors	Left & Right Outside
License Plate Mounts	Front & Rear
Cargo Box	Fleetside
Bumper	Rear Step Factory Installed
Tires	All Season
Spare Tire	Included - w/Jack
Air Conditioning	Installed
Front Seat	Bench
Rubber Floor Covering	Installed

Price Each Gasoline \$ 13641.33 + ¹⁵⁰⁰⁰ FUEL EVAL = 28641.33

EPA HGWAY	EPA CITY
<u>27</u>	<u>20</u>

Manual Transmission w/Overdrive (Deduct) _____ → \$ - 876
 FOB Dealership: (Deduct) _____ → \$ - _____
 FOB Other than Metro Charleston - Per Mile _____ → \$ _____



2007 Fleet/Non-Retail Chevrolet Colorado Ext Cab 125.9" WB 2WD Work Tr

STANDARD EQUIPMENT

STANDARD EQUIPMENT - 2007 Fleet/Non-Retail CS15653 Ext Cab 125.9" WB 2WD Work Truck

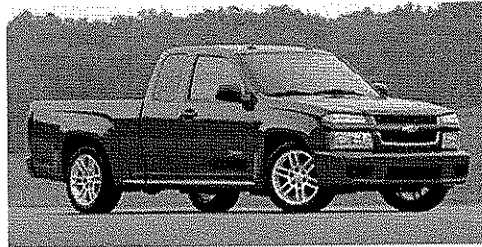
EXTERIOR

- Fascia, front Dark Smoke Gray
- Air dam, Ebony
- Grille, chrome bar with Dark Smoke Gray surround
- Daytime Running Lamps, with automatic exterior lamp control
- Mirrors, outside manual, manual-folding
- Wipers, front intermittent with washers
- Tailgate, 2-position, locking

Report content is based on current data version referenced. Any performance-related calculations are offered solely as guidelines. Actual unit performance will depend on your operating conditions.

GM AutoBook, Data Version: 117.2, Data updated 9/12/2006 10:20:00 AM
©Copyright 1986-2005 Chrome Systems Corporation. All rights reserved.

Customer File:



2007 Fleet/Non-Retail Chevrolet Colorado Ext Cab 125.9" WB 2WD Work Tr

STANDARD EQUIPMENT

STANDARD EQUIPMENT - 2007 Fleet/Non-Retail CS15653 Ext Cab 125.9" WB 2WD Work Truck

INTERIOR

- LS decor
- Seats, front 60/40 split-bench with vinyl, integral outboard head restraints and dual cup holders (Upgradeable to (92D) Medium Pewter LS cloth trim)
- Floor covering, full-width rubberized-vinyl (Upgradeable to (B30) color-keyed carpeted floor covering. Not available with (AJ2) driver- and passenger-side, forward-facing, flat-folding rear seat)
- Steering wheel, 4-spoke Deluxe
- Steering column, Tilt-Wheel
- Theft-deterrent system, PASSLock
- Instrumentation, analog with speedometer, odometer with trip odometer, fuel level, engine temperature, tachometer and Driver Information Center
- Warning tones, headlamp on, key-in-ignition, driver safety belt unfasten, turn signal on and critical Driver Information Center active
- Tire Pressure Monitor
- Door locks, manual
- Windows, manual driver and front passenger
- Cruise control
- Air conditioning, single-zone manual
- Audio system, AM/FM stereo with seek-and-scan and digital clock (Upgradeable to (US8) AM/FM stereo with CD/MP3 player)
- Power outlets, 2 auxiliary with covers, 12-volt
- Door trim, integral armrests and driver- and front passenger-side map pockets
- Mirror, inside rearview manual day/night
- Visors, driver and front passenger, padded with cloth, includes front passenger vanity mirror
- Coat hooks, driver- and passenger-side rear

Report content is based on current data version referenced. Any performance-related calculations are offered solely as guidelines. Actual unit performance will depend on your operating conditions.

GM AutoBook, Data Version: 117.2, Data updated 9/12/2006 10:20:00 AM
©Copyright 1986-2005 Chrome Systems Corporation. All rights reserved.

Customer File:



2007 Fleet/Non-Retail Chevrolet Colorado Ext Cab 125.9" WB 2WD Work Tr

STANDARD EQUIPMENT

STANDARD EQUIPMENT - 2007 Fleet/Non-Retail CS15653 Ext Cab 125.9" WB 2WD Work Truck

MECHANICAL

- Engine, 2.9L DOHC 4-cylinder MFI (185 hp [137.9 kW] @ 5600 rpm), 190 lb-ft [263.2 Nm] @ 2800 rpm) (Refer to the Engine and Axle section for compatibility requirements. Must specify. Upgradeable to (LLR) 3.7L DOHC 4-cylinder engine)
- Transmission, 5-speed manual with overdrive (Not available with (LLR) 3.7L 5-cylinder engine. Upgradeable to (M30) 4-speed automatic transmission Refer to the Engine and Axle section for compatibility requirements)
- Rear wheel drive
- Rear axle, 3.73 ratio (Refer to the Engine and Axle section for compatibility requirements. Must specify)
- Battery, heavy-duty 690 cold-cranking amps, maintenance-free with rundown protection
- Alternator, 125 amps
- Pickup box, Fleetside, all-welded steel with double wall construction and corrosion protection with 6 cargo tie-downs, tailgate, locking, 2-position
- GVWR, 5000 lbs. (2268 kg) (Standard on CS15653 2WD Extended Cab models. Refer to the Engine and Axle section for compatibility requirements)
- Suspension Package, Standard
- Suspension, front independent with coil springs (Included on 2WD models with (Z85) Standard Suspension Package or (ZQ8) Sport Suspension Package.)
- Suspension, rear semi-floating axle with 2-stage multi-leaf springs
- Tires, P205/75R15 all-season, blackwall (2WD models with (Z85) Standard Suspension Package only)
- Tire, compact spare, located at rear underbody of vehicle (Not available with (Z71) Off-Road Suspension Package or (ZQ8) Sport Suspension Package. Upgradeable to appropriate full size spare tire.)
- Wheels, 4 - 15" x 6" (38.1 cm x 15.2 cm) steel
- Steering, power, rack-and-pinion
- Brakes, 4-wheel antilock, front disc/rear drum

Report content is based on current data version referenced. Any performance-related calculations are offered solely as guidelines. Actual unit performance will depend on your operating conditions.

GM AutoBook, Data Version: 117.2, Data updated 9/12/2006 10:20:00 AM

©Copyright 1986-2005 Chrome Systems Corporation. All rights reserved.

Customer File:



2007 Fleet/Non-Retail Chevrolet Colorado Ext Cab 125.9" WB 2WD Work Tr

STANDARD EQUIPMENT

STANDARD EQUIPMENT - 2007 Fleet/Non-Retail CS15653 Ext Cab 125.9" WB 2WD Work Truck

SAFETY

- Brakes, 4-wheel antilock, front disc/rear drum
- Air bags, frontal, driver and right-front passenger with Passenger Sensing System (Always use safety belts and the correct child restraints for your child's age and size. Even in vehicles equipped with air bags and the Passenger Sensing System, children are safer when properly secured in a rear seat. Never place a rear-facing infant restraint in the front seat of any vehicle equipped with an active frontal air bag. See the vehicle's Owner's Manual and child safety seat instructions for more safety information.)
- Safety belts, 3-point, driver and right-front passenger, adjustable (center front position lap belt with bench seat only)
- Tether anchor, front, for child safety seats (LATCH system (Lower Anchors and Top tethers for CHildren) for child safety seats, only available when (AJ2) driver- and passenger-side, forward-facing, flat-folding rear seats are ordered)
- Daytime Running Lamps, with automatic exterior lamp control

Report content is based on current data version referenced. Any performance-related calculations are offered solely as guidelines. Actual unit performance will depend on your operating conditions.

GM AutoBook, Data Version: 117.2, Data updated 9/12/2006 10:20:00 AM
©Copyright 1986-2005 Chrome Systems Corporation. All rights reserved.

Customer File:

CLASS 6 AUTOMOBILE
 Utility, All Wheel/4 Wheel Drive, 4 Door
 5,700 GVWR

070-06-06-001

Vendor Name: Bill Kelley Inc.

Manufacturer / Brand
 Delivery
 Model Name & Number

Chevrolet / GM
Trailblazer / C71506

Standard Equipment Requirements:

Engine	MIN: 210 HP 254 TORQUE
Transmission	Automatic
Steering	Power
Brakes	Power/ABS
Radio	AM/FM
Glass	All Tinted
Mirrors	Left & Right Outside
License Plate Mounts	Front & Rear
Tires	All Season
Spare Tire	Full Size w/Jack
Rear Window/Defogger	Installed
Fuel Tank	Standard
Front Seat	Bucket
Rear Seat	Bench
Air Conditioning	Installed
Floor Mats	Installed

20,000.01
 Fuel Eval = 40993.63

Price Each Gasoline

\$ 20,993.62

EPA
 HGWY

EPA
 CITY

21

15

- Delete Floor Mats (Deduct) _____ →
- Manual Transmission w/Overdrive (Deduct) _____ →
- Remove Console (Delete) (Console between seats) _____ →
- FOB Dealership: (Deduct) _____ →
- FOB Other than Metro Charleston - Per Mile _____ →

\$ - 32.00
 \$ - NA
 \$ - NA
 \$ -
 \$ -



2007 Fleet/Non-Retail Chevrolet TrailBlazer 4WD 4dr LS CT15506

STANDARD EQUIPMENT

STANDARD EQUIPMENT - 2007 Fleet/Non-Retail CT15506 4WD 4dr LS

EPA FUEL ECONOMY RATINGS

- City 15/hwy 21 (5.3L engine/4-speed auto trans)
- City 15/hwy 21 (4.2L engine/4-speed auto trans)

EXTERIOR

- Paint, solid
- Side rails, roof-mounted, Black
- Door handles, Black
- Bumpers, front and rear body-color, rear step includes pad
- Grille, chrome bar
- Headlamps, dual composite halogen with automatic exterior lamp control
- Daytime Running Lamps
- Mirrors, outside manual, Black, manual-folding
- Glass, Solar-Ray light-tinted
- Wipers, front intermittent with pulse washers
- Wipers, rear intermittent with washer
- Body, liftgate with liftglass

Report content is based on current data version referenced. Any performance-related calculations are offered solely as guidelines. Actual unit performance will depend on your operating conditions.

GM AutoBook, Data Version: 117.2, Data updated 9/12/2006 10:20:00 AM
©Copyright 1986-2005 Chrome Systems Corporation. All rights reserved.

Customer File:



2007 Fleet/Non-Retail Chevrolet TrailBlazer 4WD 4dr LS CT15506

STANDARD EQUIPMENT

STANDARD EQUIPMENT - 2007 Fleet/Non-Retail CT15506 4WD 4dr LS

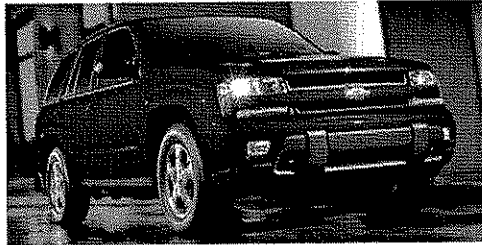
INTERIOR

- Seats, front bucket with Premium Cloth , driver lumbar control, adjustable outboard head restraints and manual recline
- Seats, second row split-folding
- Console, floor with CD storage
- Floor covering, full-floor color-keyed carpeting
- Quiet Package with acoustic laminate in windows and strategically-placed elements of sound insulation
- Steering column, Tilt-Wheel, adjustable with brake/transmission shift interlock
- Steering wheel, vinyl
- Theft-deterrent system, PASSlock
- Instrumentation, analog with speedometer, odometer with trip odometer, fuel level, voltmeter, engine temperature, oil pressure, tachometer, liftgate ajar, warning light for safety belt, ABS/parking brake, directional hazard signals and high beam
- Warning tones, headlamp on, key-in-ignition, driver safety belt unfasten and turn signal on
- Tire pressure monitoring system
- Convenience Package, power windows and door locks, programmable, with lighted switches, driver and front passenger Express-Down windows, power rear glass release and rear-window wiper/washer
- OnStar, 1-year of Safe and Sound plan. Includes Automatic Notification of Air Bag Deployment, Stolen Vehicle Location Assistance, Emergency Services, Roadside Assistance, Remote Door Unlock, OnStar Vehicle Diagnostics, Hands-Free Calling, Accident Assist, and Remote Horn & Lights (OnStar services require vehicle electrical system (including battery), wireless service and GPS satellite signals to be available and operating for features to function properly. OnStar acts as a link to existing emergency service providers. OnStar Vehicle Diagnostics available on most 2004 MY and newer GM vehicles. Diagnostic capability varies by model. Visit onstar.com for system limitations and details. Not available with certain FDR order types. Not available with a ship-to of Puerto Rico or the Virgin Islands.)
- Cruise control, electronic with set and resume speed
- Air conditioning, dual-zone manual climate control with individual climate settings for driver and right-front passenger
- Heater and defogger with front and side front door window defoggers and rear passenger heating ducts

Report content is based on current data version referenced. Any performance-related calculations are offered solely as guidelines. Actual unit performance will depend on your operating conditions.

GM AutoBook, Data Version: 117.2, Data updated 9/12/2006 10:20:00 AM
©Copyright 1986-2005 Chrome Systems Corporation. All rights reserved.

Customer File:



2007 Fleet/Non-Retail Chevrolet TrailBlazer 4WD 4dr LS CT15506

STANDARD EQUIPMENT

STANDARD EQUIPMENT - 2007 Fleet/Non-Retail CT15506 4WD 4dr LS

- Audio system, AM/FM stereo with CD player, seek-and-scan, digital clock, auto-tone control, speed-compensated volume and TheftLock (May be substituted with (US8) AM/FM stereo with CD player and MP3 playback.)
- Glovebox, passenger-side of instrument panel
- Power outlets, auxiliary
- Mirror, inside rearview manual day/night
- Armrests, driver and passenger doors, padded
- Door trim, integral padded armrests and driver- and front passenger-side map pockets
- Headliner, Neutral-colored cloth with matching retainer moldings
- Visors, driver and front passenger vanity mirrors, padded with cloth trim, color-keyed
- Assist handles, front passenger and rear outboard
- Lighting, interior with theater dimming, cargo compartment, reading lights for front seats, second row dome light, door- and tailgate-activated switches and illuminated entry and exit feature
- Cup holders, front and rear
- Cargo tie downs, 5 in-floor, located in the rear compartment

Report content is based on current data version referenced. Any performance-related calculations are offered solely as guidelines. Actual unit performance will depend on your operating conditions.

GM AutoBook, Data Version: 117.2, Data updated 9/12/2006 10:20:00 AM

©Copyright 1986-2005 Chrome Systems Corporation. All rights reserved.

Customer File:



2007 Fleet/Non-Retail Chevrolet TrailBlazer 4WD 4dr LS CT15506

STANDARD EQUIPMENT

STANDARD EQUIPMENT - 2007 Fleet/Non-Retail CT15506 4WD 4dr LS

MECHANICAL

- Engine, Vortec 4.2L I6 SFI with transmission oil cooler (291 hp [217 kW] @ 6000 rpm, 277 lb-ft of torque [375 Nm] @ 4800 rpm)
- Transmission, 4-speed automatic, electronically controlled with overdrive
- Transfer case, electronic Autotrac, includes auto 4WD and panel-mounted electronic controls (CT15506 Models only)
- Rear axle, 3.42 ratio
- 4-wheel drive
- Battery, heavy-duty, maintenance-free with rundown protection and retained accessory power
- Alternator, 150 amps (Standard with (LL8) Vortec 4.2L I6 SFI engine only.)
- Trailing equipment, heavy-duty, includes trailing hitch platform, 7-wire harness, CHMSL wire and heavy-duty flasher
- GVWR, 5750 lbs. (2608 kg) (CT15506 models only.)
- StabiliTrak, Stability Control System
- Suspension Package, Premium Smooth Ride
- Suspension, front independent
- Suspension, rear 5-link coil springs
- Stabilizer bars, front and rear
- Tires, P245/65R17 all-season, blackwall (Upgradeable to (QTE) P245/6R17 on-/off-road blackwall tires or (QTR) P245/65R17 on-/off-road White outlined-letter tires.)
- Tire, spare P235/75R16, all-season, blackwall (Included and only available with (LL8) Vortec 4.2L I6 SFI engine and (QTM) P245/65R17 all-season blackwall tires, (QTE) P245/65R17 on-/off-road blackwall tires or (QTR) P245/65R17 on-/off-road White outlined-letter tires.)
- Wheels, 4 - 17" x 7" (43.2 cm x 17.8 cm) Sport aluminum, includes center caps and steel spare (Upgradeable to (N74) 4 - 17" x 7" (43.2 cm x 17.8 cm) bright aluminum wheels but only with a Fleet or Government order.)
- Wheel, 16" (40.6 cm) full-size spare (Included and only available with (LL8) Vortec 4.2L I6 SFI engine and (N74) 4 - 17" x 7" (43.2 cm x 17.8 cm) bright aluminum wheels or (N75) 4 - 17" x 7" (43.2 cm x 17.8 cm) Sport aluminum wheels.)
- Steering, power

Report content is based on current data version referenced. Any performance-related calculations are offered solely as guidelines. Actual unit performance will depend on your operating conditions.

GM AutoBook, Data Version: 117.2, Data updated 9/12/2006 10:20:00 AM

©Copyright 1986-2005 Chrome Systems Corporation. All rights reserved.

Customer File:



2007 Fleet/Non-Retail Chevrolet TrailBlazer 4WD 4dr LS CT15506

STANDARD EQUIPMENT

STANDARD EQUIPMENT - 2007 Fleet/Non-Retail CT15506 4WD 4dr LS

- Brakes, 4-wheel antilock, 4-wheel disc
- Exhaust, aluminized stainless-steel muffler and tailpipe
- Tools, mechanical jack and wheel wrench
- Key, single, 2-sided

NOTE

- ****ALL STANDARDS ARE 2007 UNLESS OTHERWISE NOTED****

SAFETY

- Brakes, 4-wheel antilock, 4-wheel disc
- Air bags, frontal, driver and front passenger with Passenger Sensing System (Always use safety belts and the correct child restraints for your child's age and size. Even in vehicles equipped with air bags and the Passenger Sensing System, children are safer when properly secured in a rear seat. Never place a rear-facing infant restraint in the front seat of any vehicle equipped with an active frontal air bag. See the vehicle's Owners Manual and child safety seat instructions for more safety information.)
- Door locks, rear child security
- LATCH system (Lower Anchors and Top tethers for Children), for child safety seats
- StabiliTrak, Stability Control System
- Daytime Running Lamps
- Horn, dual note high and low

Report content is based on current data version referenced. Any performance-related calculations are offered solely as guidelines. Actual unit performance will depend on your operating conditions.

GM AutoBook, Data Version: 117.2, Data updated 9/12/2006 10:20:00 AM

©Copyright 1986-2005 Chrome Systems Corporation. All rights reserved.

Customer File:

CLASS 2 AUTOMOBILE
 Midsize, 4 Door Sedan
 Front Wheel Drive, Wheelbase 104"

070-06-02-000

Vendor Name: Bill Kelley Inc.

Manufacturer / Brand: Chevrolet G.m.
 Delivery: _____
 Model Name & Number: Cobalt / 1AK67

Standard Equipment Requirements:

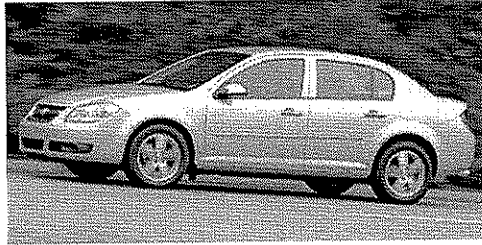
Engine	MIN: 153 HP 186 TORQUE
Transmission	Automatic
Steering	Power
Brakes	Power/ABS
Radio	AM/FM
Glass	All Tinted
Mirrors	Left & Right Outside
License Plate Mounts	Front & Rear
Tires	All Season
Spare Tire	Included - w/Jack
Rear Window/Defogger	Installed
Front Seat	Bucket
Air Conditioning	Installed
Floor Mats	Installed

Price Each	\$ 11949.96
Price Each Bi-Fuel	\$ NA
Price Each Dedicated CNG (1.6 Liter)	\$ NA
FFV / E-85	\$ NA

12500.01
 + Fuel EVAL = 24,449.97

EPA HGWAY	EPA CITY
32	24

FOB Dealership: (Deduct)	\$ -
FOB Other than Metro Charleston - Per Mile	\$



2007 Fleet/Non-Retail Chevrolet Cobalt 4dr Sdn LS 1AK69

STANDARD EQUIPMENT

STANDARD EQUIPMENT - 2007 Fleet/Non-Retail 1AK69 4dr Sdn LS

EPA FUEL ECONOMY RATINGS

- City 25/hwy 34 (2.2L engine/5-speed manual trans)
- City 24/hwy 32 (2.2L engine/4-speed auto trans)

EXTERIOR

- Fascias, front and rear with body-color grille
- Headlamps, halogen with automatic exterior lamp control
- Daytime Running Lamps
- Mirrors, outside manual, Black
- Glass, Solar-Ray light-tinted
- Wipers, front intermittent, speed-sensitive
- Door handles, body-color

Report content is based on current data version referenced. Any performance-related calculations are offered solely as guidelines. Actual unit performance will depend on your operating conditions.

GM AutoBook, Data Version: 117.2, Data updated 9/12/2006 10:20:00 AM
©Copyright 1986-2005 Chrome Systems Corporation. All rights reserved.

Customer File:



2007 Fleet/Non-Retail Chevrolet Cobalt 4dr Sdn LS 1AK69

STANDARD EQUIPMENT

STANDARD EQUIPMENT - 2007 Fleet/Non-Retail 1AK69 4dr Sdn LS

INTERIOR

- Seats, front bucket with cloth, includes manual recliners, adjustable outboard head restraints and rear 60/40 split-bench with trunk pass-through
- Seat adjuster, driver 4-way manual height
- Console, floor with 2 power outlets
- Steering column, tilt
- Steering wheel, urethane
- Instrumentation with speedometer, fuel gauge, tachometer and Driver Information Center with outside temperature, warning messages and programmable menu features
- Trunk release, remote
- Theft-deterrent system, PASS-Key III Plus
- Air conditioning, single-zone manual with air filtration system
- Defogger, side windows
- Defogger, rear-window electric
- Audio system, AM/FM stereo with CD player, seek-and-scan, digital clock, and auxiliary input jack
- Audio system feature, 4-speaker system
- Cup holders, dual front and dual rear
- Visors, front passenger vanity mirror, includes driver map pocket
- Lighting, interior with trunk and single dome

Report content is based on current data version referenced. Any performance-related calculations are offered solely as guidelines. Actual unit performance will depend on your operating conditions.

GM AutoBook, Data Version: 117.2, Data updated 9/12/2006 10:20:00 AM

©Copyright 1986-2005 Chrome Systems Corporation. All rights reserved.

Customer File:



2007 Fleet/Non-Retail Chevrolet Cobalt 4dr Sdn LS 1AK69

STANDARD EQUIPMENT

STANDARD EQUIPMENT - 2007 Fleet/Non-Retail 1AK69 4dr Sdn LS

MECHANICAL

- Engine, ECOTEC 2.2L DOHC 16-valve 4-cylinder SFI (148 hp [110.4 kW] @ 5600 rpm, 152 lb-ft of torque [205.2 N-m] @ 4200 rpm)
- Transmission, 5-speed manual, includes 3.84 axle ratio
- Front wheel drive
- Battery, trunk-mounted, maintenance free with rundown protection
- Suspension, Premium Ride
- Tires, P195/60R15 touring, blackwall
- Wheels, 15" (38.1 cm) steel with full bolt-on wheel covers
- Steering, Electric Power Steering (EPS)
- Brakes, front disc/rear drum
- Exhaust, stainless-steel

SAFETY

- Air bags, dual-stage frontal, driver and right-front passenger with Passenger Sensing System (Always use safety belts and the correct child restraints for your child's age and size. Even in vehicles equipped with air bags and the Passenger Sensing System, children are safer when properly secured in a rear seat. Never place a rear-facing infant restraint in the front seat of any vehicle equipped with an active frontal air bag. See vehicle's Owners Manual and child safety seat instructions for more safety information.)
- Safety belts, 3-point, all seating positions, front height-adjustable
- Door locks, rear child security
- LATCH system, (Lower Anchors and Top tethers for Children), for child safety seats
- Trunk emergency release handle
- Daytime Running Lamps

Report content is based on current data version referenced. Any performance-related calculations are offered solely as guidelines. Actual unit performance will depend on your operating conditions.

GM AutoBook, Data Version: 117.2, Data updated 9/12/2006 10:20:00 AM
©Copyright 1986-2005 Chrome Systems Corporation. All rights reserved.

Customer File:

CLASS 1 AUTOMOBILE
 Compact, 4 Door Sedan,
 Front Wheel Drive, Wheelbase 95"

070-06-01-000

Vendor Name: Bill Kelley Inc.

Manufacturer / Brand Gen. / Chevrolet
 Delivery _____
 Model Name & Number Aveo / 1TD69

Requirements:

Engine	MIN: 135 HP 107 TORQUE
Transmission	Automatic
Steering	Power
Brakes	Power/ABS
Radio	AM/FM
Glass	All Tinted
Mirrors	Left & Right Outside
License Plate Mounts	Front & Rear
Tires	All Season
Spare Tire	Included - w/Jack
Rear Window/Defogger	Installed
Front Seat	Bucket
Air Conditioning	Installed
Floor Mats	Installed <u>+28.70</u>

Price Each Gasoline
 Price Each Bi-Fuel
 Price Each Dedicated CNG (1.6 Liter)

\$ 11660.75 + Fuel ^{11538.48} _{Cost} = 23199.23
 \$ NA
 \$ NA

EPA HGWAY	EPA CITY
<u>34</u>	<u>26</u>

SmartAuction
 by **GMAC**

_____ → \$ -
 _____ \$

26 cuts
\$ 11538.48



2007 Fleet/Non-Retail Chevrolet Aveo 4dr Sdn LS 1TD69

STANDARD EQUIPMENT

STANDARD EQUIPMENT - 2007 Fleet/Non-Retail 1TD69 4dr Sdn LS

EPA FUEL ECONOMY RATINGS

- City 27/hwy 37 (1.6L engine/5-speed manual trans)
- City 26/hwy 34 (1.6L engine/4-speed auto trans)

EXTERIOR

- Door pillar trim, blackout
- Headlamps, halogen composite
- Repeater lamps, dual front fender-mounted, Amber bulb with White lens
- Daytime Running Lamps
- Mirrors, outside manual, body-color, manual-folding
- Glass, tinted
- Wipers, front intermittent
- Door handles, body-color

Report content is based on current data version referenced. Any performance-related calculations are offered solely as guidelines. Actual unit performance will depend on your operating conditions.

GM AutoBook, Data Version: 117.2, Data updated 9/12/2006 10:20:00 AM
©Copyright 1986-2005 Chrome Systems Corporation. All rights reserved.

Customer File:



2007 Fleet/Non-Retail Chevrolet Aveo 4dr Sdn LS 1TD69

STANDARD EQUIPMENT

STANDARD EQUIPMENT - 2007 Fleet/Non-Retail 1TD69 4dr Sdn LS

INTERIOR

- Seats, front bucket with Cloth, driver and front passenger manual fore/aft, recline and articulating headrests with accessory hook
- Seat adjuster, driver manual height and lumbar
- Armrest, driver seat
- Seat, rear 60/40 split-folding with outboard height-adjustable headrests
- Console, floor with storage compartment
- Cup holders, dual front and single rear
- Floor mats, carpeted front and rear
- Steering column, tilt
- Instrumentation, analog with tachometer, speedometer, odometer, trip odometer, fuel and coolant temperature gauges
- Clock, digital located in instrument panel
- Warning tones, include headlamps, safety belts and key in the ignition with the door ajar
- Fuel filler door release, remote lever
- Trunk release lever, inside
- Air conditioning, single-zone manual, includes (K11) air filter and rear air vents
- Defogger, rear-window electric
- Audio system, AM/FM stereo with auxiliary input jack and 4 speakers
- Antenna, back glass
- Ashtray and lighter
- Map pockets, front doors and driver and front passenger seatbacks
- Power outlet, instrument panel-mounted auxiliary with cover, 12-volt
- Mirror, inside rearview manual day/night
- Visors, driver and front passenger vanity mirrors
- Assist handles, front and rear outboard

Report content is based on current data version referenced. Any performance-related calculations are offered solely as guidelines. Actual unit performance will depend on your operating conditions.

GM AutoBook, Data Version: 117.2, Data updated 9/12/2006 10:20:00 AM
©Copyright 1986-2005 Chrome Systems Corporation. All rights reserved.

Customer File:



2007 Fleet/Non-Retail Chevrolet Aveo 4dr Sdn LS 1TD69

STANDARD EQUIPMENT

STANDARD EQUIPMENT - 2007 Fleet/Non-Retail 1TD69 4dr Sdn LS

- Lighting, interior overhead courtesy

MECHANICAL

- Engine, E-TEC II 1.6L DOHC 16-valve 4-cylinder MFI (103 hp [77 kW] @ 5800 rpm, 107 lb-ft of torque [145 N-m] @ 3600 rpm) with 5-year/60,000 mile Powertrain Warranty
- Transmission, 5-speed manual
- Axle, 3.94 ratio
- Front wheel drive
- Battery, 550 cold-cranking-amps, maintenance-free with Battery Saver System
- Alternator, 85 amps
- Suspension, front, McPherson struts with offset coil springs and stabilizer bar
- Suspension, rear torsion beam
- Tires, P185/60R14 all-season, blackwall (Included with (PY8) 14" (35.6 cm) steel wheels or (PG4) 14" (35.6 cm) 5-spoke aluminum wheels.)
- Tire, compact spare
- Wheels, 14" (35.6 cm) steel with full bolt-on wheel covers
- Steering, power, rack-and-pinion
- Brakes, front disc/rear drum
- Exhaust, stainless-steel

Report content is based on current data version referenced. Any performance-related calculations are offered solely as guidelines. Actual unit performance will depend on your operating conditions.

GM AutoBook, Data Version: 117.2, Data updated 9/12/2006 10:20:00 AM

©Copyright 1986-2005 Chrome Systems Corporation. All rights reserved.

Customer File:



2007 Fleet/Non-Retail Chevrolet Aveo 4dr Sdn LS 1TD69

STANDARD EQUIPMENT

STANDARD EQUIPMENT - 2007 Fleet/Non-Retail 1TD69 4dr Sdn LS

SAFETY

- Air bags, dual-stage frontal and side-impact, driver and right-front passenger with Passenger Sensing System (Always use safety belts and the correct child restraints for your child's age and size. Even in vehicles equipped with air bags and the Passenger Sensing System, children are safer when properly secured in a rear seat. Never place a rear-facing infant restraint in the front seat of any vehicle equipped with an active frontal air bag. See the vehicle's Owners Manual and child safety seat instructions for more safety information.)
- Safety belts, 3-point, driver and right-front passenger, height-adjustable, includes pretensioners and load limiters
- Safety belts, 3-point, all seating positions, rear
- Door locks, rear child security
- LATCH system (Lower Anchors and Top tethers for Children), for child safety seats
- Daytime Running Lamps
- Knee bolster, driver

Report content is based on current data version referenced. Any performance-related calculations are offered solely as guidelines. Actual unit performance will depend on your operating conditions.

GM AutoBook, Data Version: 117.2, Data updated 9/12/2006 10:20:00 AM

©Copyright 1986-2005 Chrome Systems Corporation. All rights reserved.

Customer File:

CLASS 18 TRUCK
 Large Pickup, 4 Wheel Drive,
 5400 GVWR, Short Bed

070-48-18-000

Vendor Name: Bill Kelley Inc.

Manufacturer / Brand GM Chevrolet
 Delivery _____
 Model Name & Number Silverado 1500

Standard Equipment Requirements:

Engine	MIN: 231 HP 293 TORQUE
Transmission	Automatic
Steering	Power
Brakes	Power/ABS
Radio	AM/FM
Glass	All Tinted
Mirrors	Left & Right Outside
License Plate Mounts	Front & Rear
Cargo Box	Fleetside
Bumper	Rear Step Factory Installed
Tires	All Season
Spare Tire	Full Size w/Jack
Air Conditioning	Installed
Front Seat	Bench
Auto Locking Hubs	Installed
Rubber Floor Covering	Installed

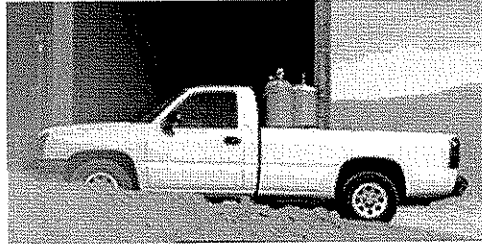
Price Each Gasoline	\$ 22019.24 22019.24
Price Each CNG	\$ NA
Hybrid	\$ NA
Flex Fuel	\$ NA

20,000.01
 Fuel
 GVWR = 42019.25

EPA
 HGWY
 19

EPA
 CITY
 15

6 Cylinder (Deduct)	_____ →	\$ - NA
Manual Transmission w/Overdrive (Deduct)	_____ →	\$ - NA
Delete Floor Mats (Deduct)	_____ →	\$ - NA
FOB Dealership: (Deduct)	_____ →	\$ -
FOB Other than Metro Charleston - Per Mile	_____	\$
		\$



2007 Fleet/Non-Retail Chevrolet Silverado 1500 Classic Reg Cab 119.0" WB

STANDARD EQUIPMENT

STANDARD EQUIPMENT - 2007 Fleet/Non-Retail CK15703 Reg Cab 119.0" WB 4WD Work Truck

EPA FUEL ECONOMY RATINGS

- City 15/hwy 20 (4.3L engine/5-speed manual trans)
- City 15/hwy 18 (4.3L engine/4-speed auto trans)
- City 15/hwy 19 (4.8L engine/4-speed auto trans)
- City 15/hwy 19 (5.3L engine/4-speed auto trans)
- City 15/hwy 19 (5.3L bi-fuel engine/4-speed auto trans w/gas)
- City 11/hwy 14 (5.3L bi-fuel engine/4-speed auto trans w/E85 gas/ethanol mix)

EXTERIOR

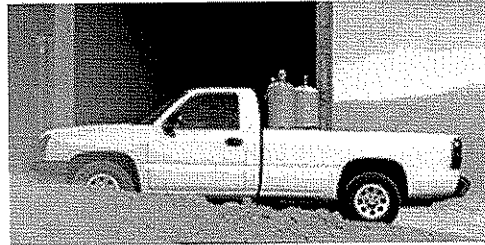
- Paint, solid
- Bumper, front chrome with Gray lower
- Bumper, rear painted, step-style with pad
- Air dam, Gray
- Grille, Gray surround with chrome accent bar
- Headlamps, dual halogen composite with automatic exterior lamp control and flash-to-pass feature
- Daytime Running Lamps, with automatic exterior lamp control
- Lamps, dual cargo area lamps
- Mirrors, outside manual, Black, manual-folding
- Glass, Solar-Ray light-tinted, all windows
- Wipers, front intermittent wet-arm with pulse washers

Report content is based on current data version referenced. Any performance-related calculations are offered solely as guidelines. Actual unit performance will depend on your operating conditions.

GM AutoBook, Data Version: 117.2, Data updated 9/12/2006 10:20:00 AM

©Copyright 1986-2005 Chrome Systems Corporation. All rights reserved.

Customer File:



2007 Fleet/Non-Retail Chevrolet Silverado 1500 Classic Reg Cab 119.0" WB

STANDARD EQUIPMENT

STANDARD EQUIPMENT - 2007 Fleet/Non-Retail CK15703 Reg Cab 119.0" WB 4WD Work Truck

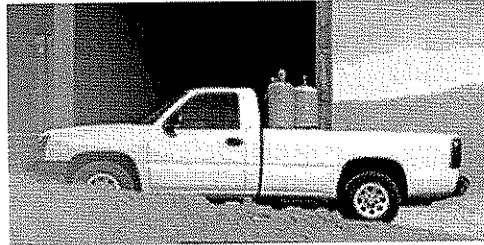
INTERIOR

- Seat trim, vinyl
- Seats, front 40/20/40 split-bench, 3-passenger, driver and front passenger manual reclining with outboard head restraints
- Floor covering, Black rubberized-vinyl
- Steering column, Tilt-Wheel, adjustable with brake/transmission shift interlock
- Steering wheel, includes theft-deterrent locking feature
- Theft-deterrent system, PASSlock II
- Instrumentation, analog with speedometer, odometer with trip odometer, fuel level, voltmeter, engine temperature, oil pressure and tachometer
- Driver Information Center that monitors numerous different systems depending on vehicle equipment
- Warning tones, headlamp on, key-in-ignition, driver and passenger buckle up reminder and turn signal on
- Air Conditioning Delete, provides heater only (Requires Regular Cab models.)
- Audio system, AM/FM stereo with seek-and-scan and digital clock
- Audio system feature, 4-speaker system
- Cup holders, front (Also includes rear cupholders on Extended and Crew Cab models.)
- Cigarette lighter, on instrument panel
- Power outlets, 2 auxiliary instrument panel-mounted with covers, 12-volt
- Mirror, inside rearview manual day/night
- Visors, driver and front passenger, padded with cloth trim, extenders, pocket on driver-side and vanity mirror on passenger-side, Shale-colored
- Assist handle, front passenger (Also includes outboard rear assist handle on Extended or Crew Cab models.)
- Coat hook, driver-side rear (Also includes passenger-side coat hook on Extended and Crew Cab models.)
- Lighting, interior with dome and reading lights, illuminated entry feature and backlit instrument panel switches

Report content is based on current data version referenced. Any performance-related calculations are offered solely as guidelines. Actual unit performance will depend on your operating conditions.

GM AutoBook, Data Version: 117.2, Data updated 9/12/2006 10:20:00 AM
©Copyright 1986-2005 Chrome Systems Corporation. All rights reserved.

Customer File:



2007 Fleet/Non-Retail Chevrolet Silverado 1500 Classic Reg Cab 119.0" WB

STANDARD EQUIPMENT

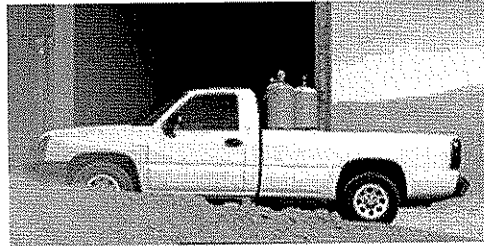
STANDARD EQUIPMENT - 2007 Fleet/Non-Retail CK15703 Reg Cab 119.0" WB 4WD Work Truck

MECHANICAL

- Engine, Vortec 4.3L V6 MFI (195 hp [145.4 kW] @ 4600 rpm, 260 lb-ft of torque [351.0 N-m] @ 2800 rpm) (Required and standard on C*15703, C*15903, and CC15753 Models only. Not available with (VYU) Snow Plow Prep Package or or (Z82) heavy-duty, trailering equipment.)
- Transmission, 5-speed manual with overdrive (Requires Regular Cab Models and (LU3) Vortec 4.3L V6 MFI engine.)
- Transfer case, floor-mounted shifter (Standard with 4x4 Regular and Extended Cab models only)
- Four wheel drive
- Battery, heavy-duty 600 cold-cranking amps, maintenance-free with rundown protection and retained accessory power
- Alternator, 145 amps
- Recovery hooks, front, frame-mounted
- Frame, hydroformed ladder-type
- Pickup box, Fleetside
- GVWR, 6400 lbs. (2903 kg) (Requires C*15903, CK15703, CK15753, C*15953, or CK15553 models.)
- Suspension Package, Solid Smooth Ride, includes 35mm piston twin tube shocks (Not available with (PDU) Light Duty Power Package.)
- Suspension, front independent (2WD models include coil springs. 4x4 models include torsion bars.)
- Suspension, rear 2-stage multi-leaf springs, semi-elliptic
- Tires, P265/70R17, all-season, blackwall (Requires 4x4 Regular or Extended Cab Models.)
- Tire, full-size spare, 17" (43.2 cm) steel, located at rear underbody of vehicle
- Wheels, 4 - 17" x 7" (43.2 cm x 17.8 cm) 6-lug painted steel, includes painted center caps and steel spare
- Tire carrier, outside spare, winch-type mounted under frame at rear
- Steering, power
- Brakes, 4-wheel antilock, front disc/rear drum
- Exhaust, aluminized stainless-steel muffler and tailpipe
- Tools, mechanical jack and wheel wrench located in back of cab

Report content is based on current data version referenced. Any performance-related calculations are offered solely as guidelines. Actual unit performance will depend on your operating conditions.

GM AutoBook, Data Version: 117.2, Data updated 9/12/2006 10:20:00 AM
©Copyright 1986-2005 Chrome Systems Corporation. All rights reserved.
Customer File:



2007 Fleet/Non-Retail Chevrolet Silverado 1500 Classic Reg Cab 119.0" WB

STANDARD EQUIPMENT

STANDARD EQUIPMENT - 2007 Fleet/Non-Retail CK15703 Reg Cab 119.0" WB 4WD Work Truck

SAFETY

- Brakes, 4-wheel antilock, front disc/rear drum
- Air bags, frontal, driver and right-front passenger with Passenger Sensing System (Always use safety belts and the correct child restraints for your child's age and size. Even in vehicles equipped with air bags and the Passenger Sensing System, children are safer when properly secured in a rear seat. Never place a rear-facing infant restraint in the front seat of any vehicle equipped with an active frontal air bag. See the vehicle's Owner's Manual and child safety seat instructions for more safety information.)
- Daytime Running Lamps, with automatic exterior lamp control

Report content is based on current data version referenced. Any performance-related calculations are offered solely as guidelines. Actual unit performance will depend on your operating conditions.

GM AutoBook, Data Version: 117.2, Data updated 9/12/2006 10:20:00 AM
©Copyright 1986-2005 Chrome Systems Corporation. All rights reserved.

Customer File:

Vendor Name: Bill Kelley Inc.

Manufacturer / Brand Gm / Chevrolet
 Delivery _____
 Model Name & Number Uplander / CU12216

Standard Equipment Requirements:

Engine	MIN: 180 HP 210 TORQUE
Transmission	Automatic
Steering	Power
Brakes	Power/ABS
Radio	AM/FM
Glass	All Tinted
Mirrors	Left & Right Outside
License Plate Mounts	Front & Rear
Step Bumper	Installed
Tires	All Season
Spare Tire	Full Size w/Jack
Air Conditioning	Installed
Seating Capacity 2	Passenger Seat

Price Each Gasoline

RWD FWD
 \$ 16414.82 + 16666.67
33081.50 Fuel
 each

EPA
HGWAY

25

EPA
CITY

18

FOB Dealership: (Deduct)
 FOB Other than Metro Charleston - Per Mile

_____ → \$ _____
 _____ \$ _____



2007 Fleet/Non-Retail Chevrolet Uplander Cargo Van 4dr Ext WB CU12216

STANDARD EQUIPMENT

STANDARD EQUIPMENT - 2007 Fleet/Non-Retail CU12216 4dr Ext WB

EXTERIOR

- Bumpers, front and rear, 5 mph
- Moldings, Black bodyside
- Headlamps, halogen composite with automatic exterior lamp control
- Daytime Running Lamps
- Glass, Solar-Ray light-tinted
- Mirrors, outside power-adjustable, Black, manual-folding
- Wipers, front intermittent
- Door, manual-sliding driver-side
- Door, manual-sliding passenger-side
- Door handles, Black

Report content is based on current data version referenced. Any performance-related calculations are offered solely as guidelines. Actual unit performance will depend on your operating conditions.

GM AutoBook, Data Version: 117.2, Data updated 9/12/2006 10:20:00 AM
©Copyright 1986-2005 Chrome Systems Corporation. All rights reserved.

Customer File:



2007 Fleet/Non-Retail Chevrolet Uplander Cargo Van 4dr Ext WB CU12216

STANDARD EQUIPMENT

STANDARD EQUIPMENT - 2007 Fleet/Non-Retail CU12216 4dr Ext WB

INTERIOR

- Seat trim, Base Cloth
- Seats, Cargo Van, 3-passenger, single crew seat
- Cargo Van Package, includes (BAD) Equipment Modification, rear quarter and carpet delete, (BG9) rubber floor covering and (G50) heavy-duty rear springs
- Steering wheel, urethane
- Steering column, Tilt-Wheel
- Instrumentation with coolant temperature, trip odometer and tachometer
- Windows, power front with driver Express-Down
- Windows, manual rear quarter vent
- Door locks, power programmable with lockout protection and delayed locking
- Remote keyless entry, programmable
- Cruise control, electronic with set and resume speed
- Theft-deterrent system, Pass-key III
- Air conditioning, single-zone manual
- Audio system, AM/FM stereo with CD player and MP3 playback, seek-and-scan, digital clock, auto-tone control, Radio Data System (RDS), automatic volume, TheftLock and premium front and rear coaxial speakers
- Audio system feature, 8-speaker system
- Antenna, fixed-mast
- Storage, open, located below instrument panel
- Cup holders, dual front, quad second row and single third row
- Power outlet, front auxiliary, 12-volt
- Visors, driver and front passenger vanity mirrors
- Lighting, interior, overhead second row

Report content is based on current data version referenced. Any performance-related calculations are offered solely as guidelines. Actual unit performance will depend on your operating conditions.

GM AutoBook, Data Version: 117.2, Data updated 9/12/2006 10:20:00 AM

©Copyright 1986-2005 Chrome Systems Corporation. All rights reserved.

Customer File:



2007 Fleet/Non-Retail Chevrolet Uplander Cargo Van 4dr Ext WB CU12216

STANDARD EQUIPMENT

STANDARD EQUIPMENT - 2007 Fleet/Non-Retail CU12216 4dr Ext WB

MECHANICAL

- Engine, 3.9L V6 SFI (240 hp [178.9 kW] @ 6000 rpm, 240 lb-ft of torque [324 N-m] @ 4800)
- Transmission, 4-speed automatic, electronically controlled with overdrive
- StabiliTrak, stability control system
- Traction control, all-speed (Available separately when (R8E) StabiliTrak, not desired.)
- Drivetrain, front-wheel drive
- Battery, maintenance-free with rundown protection
- Alternator, 125 amp
- Suspension, Soft Ride
- Tires, P225/60R17, all-season, blackwall
- Tire, compact spare, includes underbody carrier and hoist
- Wheels, 17" (43.2 cm) steel with bolt-on wheel covers
- Steering, power, rack-and-pinion
- Brakes, 4-wheel antilock, 4-wheel disc
- Exhaust, stainless-steel

SAFETY

- Brakes, 4-wheel antilock, 4-wheel disc
- Air bags, dual-stage frontal, driver and right-front passenger (Always use safety belts and the correct restraints for your child's age and size, even in vehicles equipped with air bags. Children are safer when properly secured in a rear seat. See the vehicle's Owner's Manual and child safety seat instructions for more safety information.)
- Door locks, rear child security
- LATCH system, (Lower Anchors and Top tethers for CHildren), for child safety seats
- StabiliTrak, stability control system
- Traction control, all-speed (Available separately when (R8E) StabiliTrak, not desired.)
- Daytime Running Lamps

Report content is based on current data version referenced. Any performance-related calculations are offered solely as guidelines. Actual unit performance will depend on your operating conditions.

GM AutoBook, Data Version: 117.2, Data updated 9/12/2006 10:20:00 AM

©Copyright 1986-2005 Chrome Systems Corporation. All rights reserved.

Customer File:

CLASS 25 VAN
 Small Rear Wheel Drive,
 125" Wheel Base, Eight Passenger

070-93-25-001

Vendor Name: Bill Kelley Inc.

Manufacturer / Brand Gm, Chevrolet
 Delivery _____
 Model Name & Number Express 1 CG1240Y

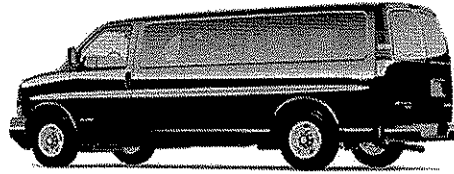
Standard Equipment Requirements:

Engine	MIN: 225 HP 286 TORQUE
Transmission	Automatic
Steering	Power
Brakes	Power/ABS
Radio	AM/FM
Glass	All Tinted, Sides and Rear
Mirrors	Left & Right Outside
License Plate Mounts	Front & Rear
Seating	8 Passenger
Tires	All Season
Spare Tire	Full Size w/Jack
Rear Window Wiper/Defogger	Installed
Floor Mats	Installed
Air Conditioning	Installed
Doors	Double Side & Rear
Interior	Full Length Head Liner w/Insulation Side & Quarter Panel
Rear Step Bumper	Installed

Price Each Gasoline \$ 18,855.29 + 21,428.58 Fuel = 40,283.87
 Price Each Bi-Fuel \$ NA *Equivalent*
 Price Each CNG \$ NA

EPA HGWAY	EPA CITY
18	14

Delete Center Row Seats (Deduct)	<u>NA</u> →	\$ -
Delete Third Row Seats (Deduct)	<u>NA</u> →	\$ -
FOB Dealership: (Deduct)	_____ →	\$ -
FOB Other than Metro Charleston - Per Mile	_____ →	\$ _____



2007 Fleet/Non-Retail Chevrolet Express Passenger 1500 135" WB RWD C

STANDARD EQUIPMENT

STANDARD EQUIPMENT - 2007 Fleet/Non-Retail CG13406 1500 135" WB RWD

EPA FUEL ECONOMY RATINGS

- City 14/hwy 18 (5.3L engine/4-speed auto trans)
- City 14/hwy 18 (5.3L FlexFuel engine/4-speed auto trans w/gas)
- City 10/hwy 13 (5.3L FlexFuel engine/4-speed auto trans w/E85 gas/ethanol mix)

EXTERIOR

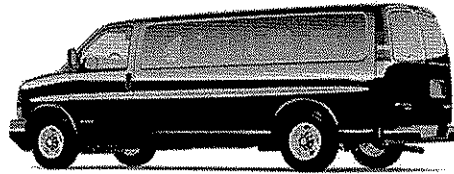
- Paint, solid
- Body, standard
- Bumpers, front and rear painted Black with step-pad (Not available when ordered with (V37) front and rear chrome bumpers.)
- Grille, Black composite with single rectangular halogen headlamps
- Headlamps, halogen
- Daytime Running Lamps
- Mirrors, outside manual, Black
- Glass, full-body window package
- Glass, Solar-Ray light-tinted, all windows
- Glass, swing-out side door windows
- Glass, swing-out rear cargo door windows
- Wipers, front intermittent wet-arm with pulse washers
- License plate kit, front
- Door, swing-out passenger-side, 60/40 split

Report content is based on current data version referenced. Any performance-related calculations are offered solely as guidelines. Actual unit performance will depend on your operating conditions.

GM AutoBook, Data Version: 117.2, Data updated 9/12/2006 10:20:00 AM

©Copyright 1986-2005 Chrome Systems Corporation. All rights reserved.

Customer File:



2007 Fleet/Non-Retail Chevrolet Express Passenger 1500 135" WB RWD C

STANDARD EQUIPMENT

STANDARD EQUIPMENT - 2007 Fleet/Non-Retail CG13406 1500 135" WB RWD

INTERIOR

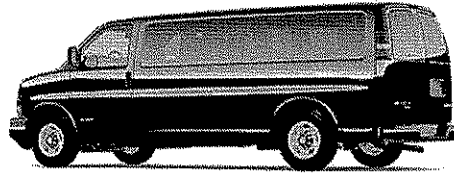
- Seats, front bucket with vinyl trim and outboard head restraints (Requires (**W) interior trim. When ordering a seating arrangement that includes rear seats, includes rear bench seats with vinyl trim. Head restraints are not available on rear bench seats.)
- Seating, 8-passenger, (2-3-3 seating configuration) (Standard on **13406 model only. Available when ordered with *G23406 or *G33406 models.)
- Console, engine cover with open storage bin
- Cup holders, 3 on engine console cover
- Power outlets, 2 auxiliary on engine console cover with covers, 12-volt
- Floor covering, full-length Black rubberized-vinyl
- Steering wheel, steel sleeve column with theft-deterrent locking feature, Black
- Instrumentation, analog with speedometer, odometer with trip odometer, fuel level, voltmeter, engine temperature and oil pressure
- Oil life monitor
- Warning tones, headlamp on and key-in-ignition
- Theft-deterrent system, PASSlock
- Air conditioning, single-zone manual
- Defogger, side windows
- Audio system, AM/FM stereo with seek-and-scan, digital clock and 2 front door speakers
- Headliner, cloth
- Mirror, inside rearview manual day/night
- Visors, driver and front passenger, padded (Not standard with *G33706 models. See (DH6) padded driver and front passenger visors with cloth trim and dual vanity mirrors.)
- Assist handle, front passenger
- Lighting, interior with 2 dome lights, defeat switch and door handle-activated switches

Report content is based on current data version referenced. Any performance-related calculations are offered solely as guidelines. Actual unit performance will depend on your operating conditions.

GM AutoBook, Data Version: 117.2, Data updated 9/12/2006 10:20:00 AM

©Copyright 1986-2005 Chrome Systems Corporation. All rights reserved.

Customer File:



2007 Fleet/Non-Retail Chevrolet Express Passenger 1500 135" WB RWD C

STANDARD EQUIPMENT

STANDARD EQUIPMENT - 2007 Fleet/Non-Retail CG13406 1500 135" WB RWD

MECHANICAL

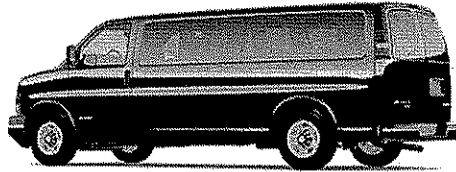
- Engine, Vortec 5.3L V8 SFI (295 hp [220 kW] @ 5200 rpm, 335 lb-ft of torque [452.25 N-m] @ 4000 rpm) (Standard on **13406 models. Reference the Engine/Axle page for availability.)
- Transmission, 4-speed automatic, electronically controlled with overdrive, tow/haul mode and internal transmission oil cooler (Standard and only available on **13406 models. Reference the Engine/Axle page for availability.)
- Tow/haul mode selector, instrument panel-mounted
- Brake/transmission shift interlock, for automatic transmissions
- Rear axle, 3.42 ratio (Standard and only available on **13406 models. Reference the Engine/Axle page for availability.)
- Rear-wheel drive
- Battery, 600 cold-cranking amps, maintenance-free with rundown protection and retained accessory power
- Alternator, 105 amps (Not available with (C69) rear air conditioning.)
- Frame, ladder-type
- Suspension, front independent with coil springs and stabilizer bar (Standard and only available on *G***06 models.)
- Suspension, rear hypoid drive axle with multi-leaf springs
- GVWR, 7200 lbs. (3266 kg) (Standard and only available on **13406 models. Reference the Engine/Axle page for availability.)
- Tires, front P245/75R16 all-season, blackwall (Standard on **13406 models.)
- Tires, rear P245/75R16 all-season, blackwall (Standard on **13406 models.)
- Tire, spare P245/75R16 all-season, blackwall, located at rear underbody of vehicle (Standard on **13406 models.)
- Wheels, Gray-painted, includes Gray center caps and steel spare (Not available on CH13406 model if (E26) swing-out driver-side door is ordered.)
- Steering, power
- Brakes, 4-wheel antilock, 4-wheel disc
- Exhaust, aluminized stainless-steel muffler and tailpipe

Report content is based on current data version referenced. Any performance-related calculations are offered solely as guidelines. Actual unit performance will depend on your operating conditions.

GM AutoBook, Data Version: 117.2, Data updated 9/12/2006 10:20:00 AM

©Copyright 1986-2005 Chrome Systems Corporation. All rights reserved.

Customer File:



2007 Fleet/Non-Retail Chevrolet Express Passenger 1500 135" WB RWD C

STANDARD EQUIPMENT

STANDARD EQUIPMENT - 2007 Fleet/Non-Retail CG13406 1500 135" WB RWD

SAFETY

- Brakes, 4-wheel antilock, 4-wheel disc
- Air bags, frontal, driver and right-front passenger (Includes passenger-side air bag deactivation switch for models with (C6P) 8600 lbs. (3901 kg) GVWR and above. Never place a rear-facing infant restraint in the front seat of any vehicle equipped with an active frontal air bag. Always use safety belts and the correct child restraints for your child's age and size, even in vehicles equipped with air bags. Children are safer when properly secured in a rear seat. See the vehicle's Owners Manual and child safety seat instructions for more safety information.)
- Child seat anchors, two attachments in the second row seat and one in the center of the third row seat only
- Brake/transmission shift interlock, for automatic transmissions
- Door beams, steel-side
- Daytime Running Lamps

Report content is based on current data version referenced. Any performance-related calculations are offered solely as guidelines. Actual unit performance will depend on your operating conditions.

GM AutoBook, Data Version: 117.2, Data updated 9/12/2006 10:20:00 AM

©Copyright 1986-2005 Chrome Systems Corporation. All rights reserved.

Customer File:

Vendor Name: Bill Kelley Inc.

Manufacturer / Brand Gm / Chevrolet
 Delivery _____
 Model Name & Number Express / CG2140

Standard Equipment Requirements:

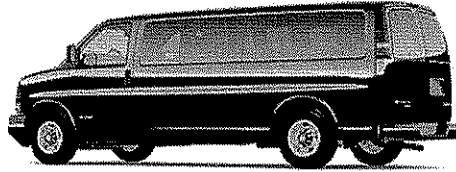
Engine	MIN: 255 HP 350 TORQUE
Transmission	Automatic
Steering	Power
Brakes	Power/ABS
Radio	AM/FM
Glass	All Tinted, Sides and Rear
Mirrors	Left & Right Outside
License Plate Mounts	Front & Rear
Seating	12 Passenger
Tires	Load Range E
Spare Tire	Full Size w/Jack
Rubber Floor Covering	Installed
Front and Rear Air Conditioning	Installed
Doors	Double Side & Rear
Interior	Full Length Head Liner w/Insulation Side & Quarter Panel
Rear Step Bumper	Installed

Price Each Gasoline	\$ <u>19573.75</u>
Price Each Bi-Fuel	\$ <u>NA</u>
Price Each CNG	\$ <u>NA</u>
Price Each Diesel	\$ <u>NA</u>

EPA
HGWY
NA

EPA
CITY
NA

Delete Center Row Seats (Deduct)	_____ →	\$ - <u>NA</u>
Delete Third Row Seats (Deduct)	_____ →	\$ - <u>425.60</u>
FOB Dealership: (Deduct)	_____ →	\$ -
FOB Other than Metro Charleston - Per Mile	_____ →	\$ <u>NA</u>



2007 Fleet/Non-Retail Chevrolet Express Passenger 2500 135" WB RWD C

STANDARD EQUIPMENT

STANDARD EQUIPMENT - 2007 Fleet/Non-Retail CG23406 2500 135" WB RWD

EXTERIOR

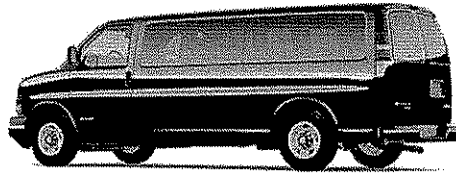
- Paint, solid
- Body, standard
- Bumpers, front and rear painted Black with step-pad (Not available when ordered with (V37) front and rear chrome bumpers.)
- Grille, Black composite with single rectangular halogen headlamps
- Headlamps, halogen
- Daytime Running Lamps
- Mirrors, outside manual, Black
- Glass, full-body window package
- Glass, Solar-Ray light-tinted, all windows
- Glass, swing-out side door windows
- Glass, swing-out rear cargo door windows
- Wipers, front intermittent wet-arm with pulse washers
- License plate kit, front
- Door, swing-out passenger-side, 60/40 split

Report content is based on current data version referenced. Any performance-related calculations are offered solely as guidelines. Actual unit performance will depend on your operating conditions.

GM AutoBook, Data Version: 117.2, Data updated 9/12/2006 10:20:00 AM

©Copyright 1986-2005 Chrome Systems Corporation. All rights reserved.

Customer File:



2007 Fleet/Non-Retail Chevrolet Express Passenger 2500 135" WB RWD C

STANDARD EQUIPMENT

STANDARD EQUIPMENT - 2007 Fleet/Non-Retail CG23406 2500 135" WB RWD

INTERIOR

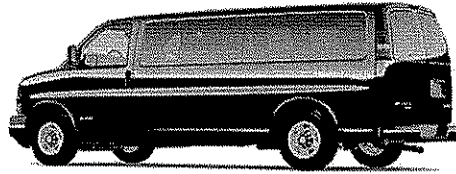
- Seats, front bucket with vinyl trim and outboard head restraints (Requires (**W) interior trim. When ordering a seating arrangement that includes rear seats, includes rear bench seats with vinyl trim. Head restraints are not available on rear bench seats.)
- Seating, 12-passenger, (2-3-3-4 seating configuration) (Standard on *G23406, *G33406, and *G33706 models only.)
- Console, engine cover with open storage bin
- Cup holders, 3 on engine console cover
- Power outlets, 2 auxiliary on engine console cover with covers, 12-volt
- Floor covering, full-length Black rubberized-vinyl
- Steering wheel, steel sleeve column with theft-deterrent locking feature, Black
- Instrumentation, analog with speedometer, odometer with trip odometer, fuel level, voltmeter, engine temperature and oil pressure
- Oil life monitor
- Warning tones, headlamp on and key-in-ignition
- Theft-deterrent system, PASSlock
- Air conditioning, single-zone manual
- Defogger, side windows
- Audio system, AM/FM stereo with seek-and-scan, digital clock and 2 front door speakers
- Headliner, cloth
- Mirror, inside rearview manual day/night
- Visors, driver and front passenger, padded (Not standard with *G33706 models. See (DH6) padded driver and front passenger visors with cloth trim and dual vanity mirrors.)
- Assist handle, front passenger
- Lighting, interior with 2 dome lights, defeat switch and door handle-activated switches

Report content is based on current data version referenced. Any performance-related calculations are offered solely as guidelines. Actual unit performance will depend on your operating conditions.

GM AutoBook, Data Version: 117.2, Data updated 9/12/2006 10:20:00 AM

©Copyright 1986-2005 Chrome Systems Corporation. All rights reserved.

Customer File:



2007 Fleet/Non-Retail Chevrolet Express Passenger 2500 135" WB RWD C

STANDARD EQUIPMENT

STANDARD EQUIPMENT - 2007 Fleet/Non-Retail CG23406 2500 135" WB RWD

MECHANICAL

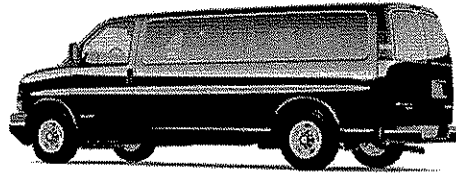
- Engine, Vortec 4.8L V8 SFI (285 hp [212.6 kW] @ 5200 rpm, 295 lb-ft of torque [398.3 N-m] @ 4000 rpm) (Standard on the *G23406 model. Includes external engine oil cooler. Reference the Engine/Axle page for availability.)
- Transmission, 4-speed automatic, heavy-duty, electronically controlled with overdrive, tow/haul mode and internal transmission oil cooler (Standard and only available on *G23406, *G33406 or *G33706 models. Reference the Engine/Axle page for availability.)
- Tow/haul mode selector, instrument panel-mounted
- Brake/transmission shift interlock, for automatic transmissions
- Rear axle, 3.73 ratio (Standard on the *G23406 and *G33*06 models. Available on **13406 models. Reference the Engine/Axle page for availability.)
- Rear-wheel drive
- Battery, 600 cold-cranking amps, maintenance-free with rundown protection and retained accessory power
- Alternator, 105 amps (Not available with (C69) rear air conditioning.)
- Frame, ladder-type
- Suspension, front independent with coil springs and stabilizer bar (Standard and only available on *G***06 models.)
- Suspension, rear hypoid drive axle with multi-leaf springs
- GVWR, 8600 lbs. (3901 kg) (Standard and only available on CG23406 model. Reference the Engine/Axle page for availability.)
- Tires, front LT225/75R16E all-season, blackwall (Standard on *G23406 models.)
- Tires, rear LT225/75R16E all-season, blackwall (Standard on *G23406 models.)
- Tire, spare LT225/75R16E all-season, blackwall, located at rear underbody of vehicle (Standard on *G23406 models.)
- Wheels, Gray-painted, includes Gray center caps and steel spare (Not available on CH13406 model if (E26) swing-out driver-side door is ordered.)
- Steering, power
- Brakes, 4-wheel antilock, 4-wheel disc
- Exhaust, aluminized stainless-steel muffler and tailpipe

Report content is based on current data version referenced. Any performance-related calculations are offered solely as guidelines. Actual unit performance will depend on your operating conditions.

GM AutoBook, Data Version: 117.2, Data updated 9/12/2006 10:20:00 AM

©Copyright 1986-2005 Chrome Systems Corporation. All rights reserved.

Customer File:



2007 Fleet/Non-Retail Chevrolet Express Passenger 2500 135" WB RWD C

STANDARD EQUIPMENT

STANDARD EQUIPMENT - 2007 Fleet/Non-Retail CG23406 2500 135" WB RWD

SAFETY

- Brakes, 4-wheel antilock, 4-wheel disc
- Air bags, frontal, driver and right-front passenger (Includes passenger-side air bag deactivation switch for models with (C6P) 8600 lbs. (3901 kg) GVWR and above. Never place a rear-facing infant restraint in the front seat of any vehicle equipped with an active frontal air bag. Always use safety belts and the correct child restraints for your child's age and size, even in vehicles equipped with air bags. Children are safer when properly secured in a rear seat. See the vehicle's Owners Manual and child safety seat instructions for more safety information.)
- Child seat anchors, two attachments in the second row seat and one in the center of the third row seat only
- Brake/transmission shift interlock, for automatic transmissions
- Door beams, steel-side
- Daytime Running Lamps

Report content is based on current data version referenced. Any performance-related calculations are offered solely as guidelines. Actual unit performance will depend on your operating conditions.

GM AutoBook, Data Version: 117.2, Data updated 9/12/2006 10:20:00 AM

©Copyright 1986-2005 Chrome Systems Corporation. All rights reserved.

Customer File:

CLASS 31 AUTOMOBILE
 Passenger Car, 104" Wheel Base

070-93-31-000

Vendor Name: Bill Kelley Inc.

Manufacturer / Brand Gm, Chevrolet
 Delivery _____
 Model Name & Number Malibu / 12561

Standard Equipment Requirements:

Engine	MIN: 145 HP 155 TORQUE
Transmission	Automatic
Steering	Power
Brakes	Power/ABS
Radio	AM/FM
Glass	All Tinted
Mirrors	Left & Right Outside
License Plate Mounts	Front & Rear
Tires	All Season
Spare Tire	Included - w/Jack
Rear Window/Defogger	Installed
Floor Mats	Installed
Air Conditioning	Installed

Price Each Gasoline \$ 13075.35 + 12500.01 = 25575.34
 Price Each Dedicated CNG (1.6 Liter) \$ NA *Fuel Evaluation*

EPA HGWAY	EPA CITY
<u>34</u>	<u>24</u>

FOB Dealership: (Deduct) _____ → \$ -
 FOB Other than Metro Charleston - Per Mile _____ \$



2007 Fleet/Non-Retail Chevrolet Malibu 4dr Sdn LS w/1FL 1ZS69

STANDARD EQUIPMENT

STANDARD EQUIPMENT - 2007 Fleet/Non-Retail 1ZS69 4dr Sdn LS w/1FL

EPA FUEL ECONOMY RATINGS

- City 24/hwy 34 (2.2L engine/4-speed auto trans)

EXTERIOR

- Fascias, front and rear body-color
- Moldings, body-color bodyside
- Moldings, Black rocker
- Headlamps, halogen composite with crystalline-like lenses and automatic exterior lamp control
- Daytime Running Lamps
- Mirrors, outside power-adjustable, Black, manual-folding
- Glass, Solar-Ray light tinted
- Wipers, front intermittent, variable, speed-sensitive
- Door handles, body-color

Report content is based on current data version referenced. Any performance-related calculations are offered solely as guidelines. Actual unit performance will depend on your operating conditions.

GM AutoBook, Data Version: 117.2, Data updated 9/12/2006 10:20:00 AM

©Copyright 1986-2005 Chrome Systems Corporation. All rights reserved.

Customer File:



2007 Fleet/Non-Retail Chevrolet Malibu 4dr Sdn LS w/1FL 1ZS69

STANDARD EQUIPMENT

STANDARD EQUIPMENT - 2007 Fleet/Non-Retail 1ZS69 4dr Sdn LS w/1FL

INTERIOR

- Seats, front bucket with cloth, reclining seatback, and adjustable outboard head restraints
- Seat, rear 60/40 split-folding seatback
- Seat adjuster, driver power vertical height
- Console, floor with floor shifter, integral armrest and storage compartment
- Floor mats, carpeted front and rear
- Steering column, tilt and telescopic
- Steering wheel, 4-spoke
- Instrumentation, analog with speedometer, engine temperature, fuel, tachometer and PRNDL
- Driver Information Center, with driver customization, warning messages and vehicle information
- Windows, power with driver Express-Down and rear passenger lockout
- Door locks, power programmable with lockout protection and delayed locking
- Remote Keyless Entry, enhanced with remote start enable
- Cruise control, electronic with set and resume speed, includes cancel feature
- Trunk release, power, interior
- Theft-deterrent system, PASS-Key III Plus
- Air conditioning, single-zone manual
- Defogger, rear-window electric
- Audio system, AM/FM stereo with CD player, seek-and-scan, digital clock, outside temperature display, trip odometer, Driver Information Center, warning messages and programmable menu functions
- Audio system feature, 4-speaker system (Included and only available with (U1C) AM/FM stereo with CD player.)
- Cup holders, dual front and rear
- Power outlets, 2 auxiliary (2 outlets in front without (NW7) Traction Control or 1 outlet in front and 1 in center console with (NW7) Traction Control.)
- Mirror, inside rearview manual day/night
- Visors, driver and front passenger vanity mirrors, covered

Report content is based on current data version referenced. Any performance-related calculations are offered solely as guidelines. Actual unit performance will depend on your operating conditions.

GM AutoBook, Data Version: 117.2, Data updated 9/12/2006 10:20:00 AM
©Copyright 1986-2005 Chrome Systems Corporation. All rights reserved.

Customer File:



2007 Fleet/Non-Retail Chevrolet Malibu 4dr Sdn LS w/1FL 1ZS69

STANDARD EQUIPMENT

STANDARD EQUIPMENT - 2007 Fleet/Non-Retail 1ZS69 4dr Sdn LS w/1FL

- Assist handles, rear outboard

MECHANICAL

- Engine, ECOTEC 2.2L DOHC 16-valve 4-cylinder MFI (144 hp [107.4 kW] @ 5600 rpm, 155 lb-ft of torque [209.3 N-m] @ 4000 rpm)
- Transmission, 4-speed automatic, electronically controlled with overdrive, includes electronic range selector
- Front wheel drive
- Battery, maintenance free with rundown protection
- Suspension, 4-wheel independent
- Tires, P205/65R15 touring, blackwall
- Wheels, 15" (38.1 cm) steel with full wheel covers
- Steering, Electric Power Steering (EPS) assist
- Brakes, front disc/rear drum

SAFETY

- Air bags, dual-stage frontal, driver and right-front passenger and head curtain side-impact, front and rear outboard seating positions with Passenger Sensing System (Head curtain side air bags are designed to help reduce the risk of head and neck injuries to front and rear seat occupants on the near side of certain side-impact collisions. Always use safety belts and the correct child restraints for your child's age and size. Even in vehicles equipped with air bags and the Passenger Sensing System, children are safer when properly secured in a rear seat. Never place a rear-facing infant restraint in the front seat of any vehicle equipped with an active frontal air bag. See the vehicle's Owners Manual and child safety seat instructions for more safety information.)
- Safety belts, 3-point, all seating positions, includes front seat pretensioners
- LATCH system (Lower Anchors and Top tethers for CHildren), for child safety seats
- Door locks, rear child security
- Daytime Running Lamps

Report content is based on current data version referenced. Any performance-related calculations are offered solely as guidelines. Actual unit performance will depend on your operating conditions.

GM AutoBook, Data Version: 117.2, Data updated 9/12/2006 10:20:00 AM

©Copyright 1986-2005 Chrome Systems Corporation. All rights reserved.

Customer File:

CLASS 32 AUTOMOBILE
 Full Size, Front Wheel Drive,
 110" Wheel Base

070-93-32-000

Vendor Name: Bill Kelley Inc.

Manufacturer / Brand Gm. / Buick
 Delivery _____
 Model Name & Number Lacrosse / 4WCI9

Standard Equipment Requirements:

Engine	MIN: 175 HP 195 TORQUE
Transmission	Automatic
Steering	Power
Brakes	Power/ABS
Radio	AM/FM
Glass	All Tinted
Mirrors	Left & Right Outside
License Plate Mounts	Front & Rear
Tires	All Season
Spare Tire	Full Size w/Jack
Rear Window/Defogger	Installed
Floor Mats	Installed
Air Conditioning	Installed
Front Seats	Bucket

Price Each Gasoline \$ 18,336.89 + 1500 Fuel 33,336.89
 Price Each Dedicated CNG (1.6 Liter) \$ NA Equivalent

EPA HGWAY	EPA CITY
30	20

Delete Floor Mats (Deduct)	_____→	\$ - 116.00
Manual Transmission w/Overdrive (Deduct)	_____→	\$ -
FOB Dealership: (Deduct)	_____→	\$ -
FOB Other than Metro Charleston - Per Mile	_____→	\$ -



2007 Fleet/Non-Retail Buick LaCrosse 4dr Sdn CX 4WC19

STANDARD EQUIPMENT

STANDARD EQUIPMENT - 2007 Fleet/Non-Retail 4WC19 4dr Sdn CX

EPA FUEL ECONOMY RATINGS

- City 20/hwy 30 (3.8L engine/4-speed auto trans)

EXTERIOR

- Grille, chrome surround with graphite colored accents
- Moldings, body-color bodyside
- Door handles, chrome
- Daytime Running Lamps, switchable
- Headlamps, halogen composite with Twilight Sentinel and flash-to-pass feature
- Mirrors, outside power-adjustable, body-color
- Glass, Solar-Ray light-tinted
- Wipers, front intermittent, structure-less wiper blades
- License plate bracket, front (Standard only in states that require a front license plate. Available to order through SPO.)

Report content is based on current data version referenced. Any performance-related calculations are offered solely as guidelines. Actual unit performance will depend on your operating conditions.

GM AutoBook, Data Version: 117.2, Data updated 9/12/2006 10:20:00 AM

©Copyright 1986-2005 Chrome Systems Corporation. All rights reserved.

Customer File:



2007 Fleet/Non-Retail Buick LaCrosse 4dr Sdn CX 4WC19

STANDARD EQUIPMENT

STANDARD EQUIPMENT - 2007 Fleet/Non-Retail 4WC19 4dr Sdn CX

INTERIOR

- Seat trim, cloth
- Seats, front bucket, includes 6-way power driver seat adjuster, 2-way manual front passenger seat adjuster with fore/aft controls, outboard head restraints, front seatback map pockets and rear armrest with dual cup holders
- Seat adjuster, driver 6-way power
- Floor mats, front and rear, stain-resistant
- Steering column, Tilt-Wheel, adjustable
- Steering wheel, 4-spoke with mounted cruise controls
- Instrumentation, analog with speedometer, temperature, fuel, tachometer, trip odometer, door and trunk ajar, washer fluid level and oil-life monitor
- Tire Pressure Monitoring System
- Windows, power with driver Express-Down
- Door locks, power programmable with lockout protection and enhanced safety
- Retained accessory power, power windows, audio system and sunroof remain operational after ignition is switched off for 10 minutes or until a door is opened
- Cruise control
- Remote Keyless Entry
- Trunk release, driver and front passenger door lock buttons, push and hold 3 seconds
- Theft-deterrent system, PASS-Key III

Report content is based on current data version referenced. Any performance-related calculations are offered solely as guidelines. Actual unit performance will depend on your operating conditions.

GM AutoBook, Data Version: 117.2, Data updated 9/12/2006 10:20:00 AM

©Copyright 1986-2005 Chrome Systems Corporation. All rights reserved.

Customer File:



2007 Fleet/Non-Retail Buick LaCrosse 4dr Sdn CX 4WC19

STANDARD EQUIPMENT

STANDARD EQUIPMENT - 2007 Fleet/Non-Retail 4WC19 4dr Sdn CX

- OnStar, 1-year of Directions and Connections plan. Includes Automatic Notification of Air Bag Deployment, Stolen Vehicle Location Assistance, Emergency Services, Roadside Assistance, Remote Door Unlock, OnStar Vehicle Diagnostics, Hands-Free Calling, AccidentAssist, Remote Horn and Lights, Information and Convenience Services, and Driving Directions delivered through OnStar Turn-by-Turn Navigation (where available) (OnStar services require vehicle electrical system (including battery), wireless service and GPS satellite signals to be available and operating for features to function properly. OnStar acts as a link to existing emergency service providers. OnStar Vehicle Diagnostics available on most 2004 MY and newer GM vehicles. Diagnostic capability varies by model. Service capable hardware and ABS required. Only available to subscribers residing in and traveling through OnStar's contracted carriers' enhanced service capable markets. Limited routing information available in some areas. Not available in Alaska. Road, environmental and tire conditions that affect ABS or GPS may cause degraded service. Visit onstar.com for system limitations and details.)
- Air conditioning, single-zone manual with rear seat heating/cooling outlets
- Air filtration system
- Defogger, rear-window electric
- Audio system, AM/FM stereo with CD player, seek-and-scan, digital clock, auto-tone control, speed-compensated volume, Theftlock and 6 speakers
- Antenna, integral rear
- QuietTuning
- Mirror, inside rearview manual day/night
- Visors, driver and front passenger vanity mirrors, sliding
- Assist handles, front passenger and rear outboard with coat hook on left rear passenger assist handle (Front passenger assist handle not available when (CF5) power sunroof is ordered.)
- Lighting, interior with glovebox, trunk, delayed entry/exit with theater dimming, rear courtesy, front footwell and front map lights

Report content is based on current data version referenced. Any performance-related calculations are offered solely as guidelines. Actual unit performance will depend on your operating conditions.

GM AutoBook, Data Version: 117.2, Data updated 9/12/2006 10:20:00 AM

©Copyright 1986-2005 Chrome Systems Corporation. All rights reserved.

Customer File:



2007 Fleet/Non-Retail Buick LaCrosse 4dr Sdn CX 4WC19

STANDARD EQUIPMENT

STANDARD EQUIPMENT - 2007 Fleet/Non-Retail 4WC19 4dr Sdn CX

MECHANICAL

- Engine, 3.8L 3800 V6 SFI (200 hp [149.2 kW] @ 5200 rpm, 230 lb-ft of torque [310.5 N-m] @ 4000 rpm)
- Transmission, 4-speed automatic, electronically controlled with overdrive
- Axle, 3.05 ratio
- Traction control, Enhanced Traction System (ETS), powertrain-modulated (Not included with (J65) 4-wheel disc brakes.)
- Front wheel drive
- Battery, 600 cold-cranking amps, maintenance-free with rundown protection
- Suspension, 4-wheel independent, Premium Ride
- Tires, P225/60R16 all-season, blackwall, steel-belted radial
- Wheels, 16" (40.6 cm) steel with wheel covers
- Tire, compact spare, includes steel wheel
- Steering, power, rack-and-pinion
- Brakes, 4-wheel antilock, 4-wheel disc
- Exhaust, stainless-steel

Report content is based on current data version referenced. Any performance-related calculations are offered solely as guidelines. Actual unit performance will depend on your operating conditions.

GM AutoBook, Data Version: 117.2, Data updated 9/12/2006 10:20:00 AM
©Copyright 1986-2005 Chrome Systems Corporation. All rights reserved.

Customer File:



2007 Fleet/Non-Retail Buick LaCrosse 4dr Sdn CX 4WC19

STANDARD EQUIPMENT

STANDARD EQUIPMENT - 2007 Fleet/Non-Retail 4WC19 4dr Sdn CX

SAFETY

- Brakes, 4-wheel antilock, 4-wheel disc
- Air bags, dual-stage frontal, driver and right-front passenger and head curtain side-impact, front and rear outboard seating positions with Passenger Sensing System (Head Curtain side air bags are designed to help reduce the risk of head and neck injuries to front and rear seat occupants on the near side of certain side-impact collisions. Always use safety belts and the correct child restraints for your child's age and size. Even in vehicles equipped with air bags and the Passenger Sensing System, children are safer when properly secured in a rear seat. Never place a rear-facing infant restraint in the front seat of any vehicle equipped with an active frontal air bag. See the vehicle's Owner's Manual and child safety seat instructions for more safety information.)
- Safety belts, 3-point, driver and right-front passenger (Includes center position lap belt when (AV8) 6-passenger seating is ordered.)
- Safety belts, 3-point, rear, all seating positions
- LATCH system, (Lower Anchors and Top tethers for CHildren), for child safety seats in all rear seating positions
- Door locks, child security, rear
- Traction control, Enhanced Traction System (ETS), powertrain-modulated (Not available with (J65) 4-wheel disc brakes.)
- Daytime Running Lamps, switchable
- Horn, dual-note high and low

Report content is based on current data version referenced. Any performance-related calculations are offered solely as guidelines. Actual unit performance will depend on your operating conditions.

GM AutoBook, Data Version: 117.2, Data updated 9/12/2006 10:20:00 AM

©Copyright 1986-2005 Chrome Systems Corporation. All rights reserved.

Customer File:

CLASS 32 AUTOMOBILE
 Full Size, Front Wheel Drive,
 110" Wheel Base

070-93-32-000

Vendor Name: Bill Kelley Inc.

Manufacturer / Brand GM / Impala Chevrolet
 Delivery _____
 Model Name & Number Impala / 1WB19

Standard Equipment Requirements:

Engine	MIN: 175 HP, 195 TORQUE
Transmission	Automatic
Steering	Power
Brakes	Power/ABS
Radio	AM/FM
Glass	All Tinted
Mirrors	Left & Right Outside
License Plate Mounts	Front & Rear
Tires	All Season
Spare Tire	Full Size w/Jack
Rear Window/Defogger	Installed
Floor Mats	Installed
Air Conditioning	Installed
Front Seats	Bucket

Price Each Gasoline \$ 16449.77 + 1500 Fuel @ 10.00/gallon = 31,449.77
 Price Each Dedicated CNG (1.6 Liter) \$ _____

EPA HGWY 20 EPA CITY 20

Delete Floor Mats (Deduct)	_____ →	\$ - 64.00
Manual Transmission w/Overdrive (Deduct)	_____ →	\$ -
FOB Dealership: (Deduct)	_____ →	\$ -
FOB Other than Metro Charleston - Per Mile	_____ →	\$ -



2007 Fleet/Non-Retail Chevrolet Impala 4dr Sdn LS 1WB19

STANDARD EQUIPMENT

STANDARD EQUIPMENT - 2007 Fleet/Non-Retail 1WB19 4dr Sdn LS

EPA FUEL ECONOMY RATINGS

- City 21/hwy 31 (3.5L bi-fuel engine/4-speed auto trans w/gas)
- City 16/hwy 23 (3.5L bi-fuel engine/4-speed auto trans w/E85 gas/ethanol mix)
- City 20/hwy 29 (3.5L gas engine/4-speed auto trans)

EXTERIOR

- Moldings, body-color bodyside
- Moldings, body-color rocker
- Headlamps, halogen composite with automatic exterior lamp control
- Daytime Running Lamps
- Mirrors, outside power-adjustable, body-color
- Glass, Solar-Ray light-tinted
- Wipers, front intermittent

Report content is based on current data version referenced. Any performance-related calculations are offered solely as guidelines. Actual unit performance will depend on your operating conditions.

GM AutoBook, Data Version: 117.2, Data updated 9/12/2006 10:20:00 AM

©Copyright 1986-2005 Chrome Systems Corporation. All rights reserved.

Customer File:



2007 Fleet/Non-Retail Chevrolet Impala 4dr Sdn LS 1WB19

STANDARD EQUIPMENT

STANDARD EQUIPMENT - 2007 Fleet/Non-Retail 1WB19 4dr Sdn LS

INTERIOR

- Seats, front bucket with Cloth, 40/40
- Seat adjuster, driver manual lumbar control
- Seat adjuster, driver 8-way power
- Seat, rear fixed bench
- Steering column, Tilt-Wheel
- Steering wheel, urethane
- Shifter, floor console
- Instrumentation, analog 4-gauge cluster with speedometer, tachometer, coolant temperature, fuel, trip odometer and Driver Information Center
- Tire Pressure Monitor
- Oil life monitoring system
- Windows, power with driver Express-Down and passenger lockout
- Door locks, power programmable with lockout protection and enhanced safety
- Remote Keyless Entry
- OnStar, 1-year of Safe and Sound plan. Includes Automatic Notification of Air Bag Deployment, Stolen Vehicle Location Assistance, Emergency Services, Roadside Assistance, Remote Door Unlock, OnStar Vehicle Diagnostics, Hands-Free Calling, AccidentAssist and Remote Horn & Lights (OnStar services require vehicle electrical system (including battery), wireless service and GPS satellite signals to be available and operating for features to function properly. OnStar acts as a link to existing emergency service providers. OnStar Vehicle Diagnostics available on most 2004 MY and newer GM vehicles. Diagnostic capability varies by model. Visit onstar.com for system limitations and details. Not available with a ship-to of Puerto Rico or the Virgin Islands.)
- Cruise control, electronic with set and resume speed
- Trunk release, remote
- Theft-deterrent system, PASSlock
- Air conditioning, single zone manual with air filtration system
- Defogger, rear-window electric

Report content is based on current data version referenced. Any performance-related calculations are offered solely as guidelines. Actual unit performance will depend on your operating conditions.

GM AutoBook, Data Version: 117.2, Data updated 9/12/2006 10:20:00 AM

©Copyright 1986-2005 Chrome Systems Corporation. All rights reserved.

Customer File:



2007 Fleet/Non-Retail Chevrolet Impala 4dr Sdn LS 1WB19

STANDARD EQUIPMENT

STANDARD EQUIPMENT - 2007 Fleet/Non-Retail 1WB19 4dr Sdn LS

- Audio system, AM/FM stereo with CD player, seek-and-scan, digital clock, auto-tone control, automatic volume, TheftLock and auxiliary input jack
- Audio system feature, 6-speakers system
- Antenna, integral rear
- Applique, woodgrain on instrument panel and door
- Mirror, inside rearview manual day/night
- Visors, driver and front passenger vanity mirrors, covered
- Assist handles, front passenger and rear outboard
- Lighting, interior with center-mounted dome and rear reading lights

MECHANICAL

- Engine, 3.5L V6 SFI, includes (E85) FlexFuel (gas ethanol) capability, uses gasoline or E85 fuel (211 hp [157.3 kW] @ 5800 rpm, 214 lb-ft of torque [288.9 N-m] @ 4000) (Included and only available with (FE9) Emissions, Federal requirements.)
- Transmission, 4-speed automatic electronically controlled with overdrive
- Axle, 2.86 ratio
- Front wheel drive
- Battery, maintenance-free with rundown protection and retained accessory power (600 CCA.)
- Alternator, 125 amps
- Suspension, 4-wheel independent, Touring
- Tires, P225/60R16 all-season, blackwall
- Tire, compact spare
- Wheels, 16" (40.6 cm) steel with deluxe bolt-on wheel covers
- Steering, power, rack-and-pinion
- Brakes, 4-wheel disc
- Exhaust, single stainless-steel

Report content is based on current data version referenced. Any performance-related calculations are offered solely as guidelines. Actual unit performance will depend on your operating conditions.

GM AutoBook, Data Version: 117.2, Data updated 9/12/2006 10:20:00 AM

©Copyright 1986-2005 Chrome Systems Corporation. All rights reserved.

Customer File:



2007 Fleet/Non-Retail Chevrolet Impala 4dr Sdn LS 1WB19

STANDARD EQUIPMENT

STANDARD EQUIPMENT - 2007 Fleet/Non-Retail 1WB19 4dr Sdn LS

SAFETY

- Air bags, dual-stage frontal, driver and right-front passenger and head curtain side-impact, front and rear outboard seating positions (Head curtain side air bags are designed to help reduce the risk of head and neck injuries to front and rear seat occupants on the near side of certain side-impact collisions. Always use safety belts and the correct child restraints for your child's age and size, even in vehicles equipped with air bags. Children are safer when properly secured in a rear seat. See the vehicle's Owner's Manual and child safety seat instructions for more safety information.)
- Door locks, rear child security
- Trunk emergency release handle
- LATCH system (Lower Anchors and Top tethers for Children), for child safety seats
- Daytime Running Lamps

Report content is based on current data version referenced. Any performance-related calculations are offered solely as guidelines. Actual unit performance will depend on your operating conditions.

GM AutoBook, Data Version: 117.2, Data updated 9/12/2006 10:20:00 AM

©Copyright 1986-2005 Chrome Systems Corporation. All rights reserved.

Customer File:

Vendor Name: Bill Kelley Inc.

Manufacturer / Brand
 Delivery
 Model Name & Number

~~Pontiac / Grand Prix~~ GM, Pontiac
Grand Prix / 24P69

Standard Equipment Requirements:

Engine	MIN: 175 HP. 195 TORQUE
Transmission	Automatic
Steering	Power
Brakes	Power/ABS
Radio	AM/FM
Glass	All Tinted
Mirrors	Left & Right Outside
License Plate Mounts	Front & Rear
Tires	All Season
Spare Tire	Full Size w/Jack
Rear Window/Defogger	Installed
Floor Mats	Installed
Air Conditioning	Installed
Front Seats	Bucket

Price Each Gasoline

Price Each Dedicated CNG (1.6 Liter)

\$ 16772.21 71500.00 Fuel = 31772.21
 \$ NA Evaluation

EPA
 HGWY

30

EPA
 CITY

20

Delete Floor Mats (Deduct)
 Manual Transmission w/Overdrive (Deduct)
 FOB Dealership: (Deduct)
 FOB Other than Metro Charleston - Per Mile

\$ - 64.00
 \$ -
 \$ -
 \$ -



2007 Fleet/Non-Retail Pontiac Grand Prix 4dr Sdn 2WP69

STANDARD EQUIPMENT

STANDARD EQUIPMENT - 2007 Fleet/Non-Retail 2WP69 4dr Sdn

EPA FUEL ECONOMY RATINGS

- City 20/hwy 30 (3.8L engine/4-speed auto trans)

EXTERIOR

- Fascias, front and rear with Gray lower accents
- Moldings, body-color bodyside
- License plate bracket, front (Included on required states. Available to order through SPO.)
- Spoiler, rear, aerodynamic
- Headlamps, halogen composite, high-intensity
- Daytime Running Lamps
- Mirrors, outside power-adjustable, Sport, body-color
- Glass, Solar-Ray light-tinted
- Wipers, front intermittent
- Doors, rear "wide-opening", 3 detent positions to 82 degrees

Report content is based on current data version referenced. Any performance-related calculations are offered solely as guidelines. Actual unit performance will depend on your operating conditions.

GM AutoBook, Data Version: 117.2, Data updated 9/12/2006 10:20:00 AM

©Copyright 1986-2005 Chrome Systems Corporation. All rights reserved.

Customer File:



2007 Fleet/Non-Retail Pontiac Grand Prix 4dr Sdn 2WP69

STANDARD EQUIPMENT

STANDARD EQUIPMENT - 2007 Fleet/Non-Retail 2WP69 4dr Sdn

INTERIOR

- Seats, front bucket, with front passenger map pocket
- Seat adjuster, driver 6-way power
- Seats, rear 60/40 split-folding seatbacks
- Console, floor with floor shifter, integral armrest with leather cover, lighted shift indicator, storage compartment, 2 front cup holders, 2 rear cup holders/removable, 2 auxiliary power outlets and small items storage
- Steering wheel, urethane rim and shift knob
- Steering column, Tilt-Wheel, adjustable
- Instrumentation, analog, red back lighting with speedometer, temperature, fuel and tachometer
- Driver Information Center, 3-button system with language selection (English, Spanish and French), date, PRNDL, oil life monitor, tire pressure, odometer, driver warning messages and personalization features (door locks and interior/exterior lighting)
- Tire Pressure Monitoring System
- Windows, power with driver Express-Down
- Door locks, power programmable with lockout protection and enhanced safety
- Retained accessory power, power windows and audio system remain operational after ignition is switched off for 10 minutes or until a door is opened
- Remote Keyless Entry, with content theft-deterrent system
- OnStar, 1-year of Safe and Sound plan. Includes Automatic Notification of Air Bag Deployment, Stolen Vehicle Location Assistance, Emergency Services, Roadside Assistance, Remote Door Unlock, OnStar Vehicle Diagnostics, Hands-Free Calling, AccidentAssist, and Remote Horn & Lights (OnStar services require vehicle electrical system (including battery), wireless service and GPS satellite signals to be available and operating for features to function properly. OnStar acts as a link to existing emergency service providers. OnStar Vehicle Diagnostics available on most 2004 MY and newer GM vehicles. Diagnostic capability varies by model. Visit onstar.com for system limitations and details. Includes front center-mounted roof antenna. If the order type is FDR, (UE0) OnStar, not-installed will be forced on.)
- Cruise control, electronic with set and resume speed
- Trunk release, front driver and passenger door lock buttons, push and hold 3 seconds
- Theft-deterrent alarm system, vehicle, includes PASS-Key III

Report content is based on current data version referenced. Any performance-related calculations are offered solely as guidelines. Actual unit performance will depend on your operating conditions.

GM AutoBook, Data Version: 117.2, Data updated 9/12/2006 10:20:00 AM

©Copyright 1986-2005 Chrome Systems Corporation. All rights reserved.

Customer File:



2007 Fleet/Non-Retail Pontiac Grand Prix 4dr Sdn 2WP69

STANDARD EQUIPMENT

STANDARD EQUIPMENT - 2007 Fleet/Non-Retail 2WP69 4dr Sdn

- Air conditioning, single-zone manual
- Defogger, rear-window electric with front and side window outlets for the driver and right-front passenger
- Audio system, AM/FM stereo with CD player, seek-and-scan, digital clock, auto-tone control, Radio Data System (RDS), speed-compensated volume, TheftLock and programmable equalizer
- Audio system feature, 6-speaker system
- Antenna, integral rear-window
- Mirror, inside rearview manual day/night
- Assist handles, front and rear outboard

MECHANICAL

- Engine, 3.8L Series III V6 SFI with Electronic Throttle Control (200 hp [149.2 kW] @ 5200 rpm, 230 lb-ft of torque [310.5 N-m] @ 4000rpm)
- Transmission, 4-speed automatic, electronically controlled with overdrive
- Transmission controls, floor shift, 7-position PRNDL
- Brake/transmission shift interlock, for automatic transmissions
- Drivetrain, front-wheel drive
- Battery, maintenance-free, with glass mat technology
- Suspension, 4-wheel independent, Wide Track System
- Tires, P225/60R16 touring, blackwall
- Tire, compact spare
- Wheels, 16" (40.6 cm) painted aluminum
- Steering, power, rack-and-pinion
- Brakes, 4-wheel disc with Electronic Brake Force Distribution
- Exhaust, single-outlet stainless-steel

Report content is based on current data version referenced. Any performance-related calculations are offered solely as guidelines. Actual unit performance will depend on your operating conditions.

GM AutoBook, Data Version: 117.2, Data updated 9/12/2006 10:20:00 AM
©Copyright 1986-2005 Chrome Systems Corporation. All rights reserved.

Customer File:



2007 Fleet/Non-Retail Pontiac Grand Prix 4dr Sdn 2WP69

STANDARD EQUIPMENT

STANDARD EQUIPMENT - 2007 Fleet/Non-Retail 2WP69 4dr Sdn

SAFETY

- Air bags, frontal, driver and right-front passenger (Always use safety belts and the correct child restraints for your child's age and size, even in vehicles equipped with air bags. Children are safer when properly secured in a rear seat. See the vehicle's Owners Manual and child safety seat instructions for more safety information.)
- Safety belts, 3-point, driver and right-front passenger, height-adjustable shoulder belt
- Safety belts, 3-point, rear, all seating positions with child comfort guides in outboard positions
- Door locks, rear child security
- Brake/transmission shift interlock, for automatic transmissions
- Daytime Running Lamps

Report content is based on current data version referenced. Any performance-related calculations are offered solely as guidelines. Actual unit performance will depend on your operating conditions.

GM AutoBook, Data Version: 117.2, Data updated 9/12/2006 10:20:00 AM

©Copyright 1986-2005 Chrome Systems Corporation. All rights reserved.

Customer File: