



State of West Virginia
 Department of Administration
 Purchasing Division
 2019 Washington Street East
 Post Office Box 50130
 Charleston, WV 25305-0130

Request for Quotation

RFQ NUMBER
AUD073145

PAGE
1

ADDRESS CORRESPONDENCE TO ATTENTION OF:
RON PRICE
304-558-0492

VENDOR

RFQ COPY
 TYPE NAME/ADDRESS HERE
IKON Office Solutions
3006 Mt Vernon Rd
Hurricane, WV 25526

SHIP TO

STATE AUDITOR'S OFFICE
 BUILDING 1, ROOM W100
 1900 KANAWHA BOULEVARD, EAST
 CHARLESTON, WV
 25305-0230 558-2251

DATE PRINTED 09/13/2006	TERMS OF SALE	SHIP VIA	F.O.B.	FREIGHT TERMS
BID OPENING DATE: 09/28/2006		BID OPENING TIME 01:30PM		

LINE	QUANTITY	UOP	CAT NO.	ITEM NUMBER	UNIT PRICE	AMOUNT
0001	1	LS		600-36		
<p>CHECK PRINTING SYSTEM</p> <p>REQUEST FOR INFORMATION</p> <p>TO SOLICIT INFORMATION FROM QUALIFIED VENDORS FOR PRODUCTS AND SERVICES REQUIRED TO REPLACE THE EXISTING CHECK PRINTING SYSTEM PER THE ATTACHED</p> <p>PLEASE FURNISH ONE ORIGINAL AND ONE CONVENIENCE COPY OF THE INFORMATION TO:</p> <p>PURCHASING DIVISION 2019 WASHINGTON STREET EAST CHARLESTON, WV 25305</p> <p>THE BID SHOULD CONTAIN THIS INFORMATION ON THE FACE OF THE ENVELOPE OR THE BID MAY NOT BE CONSIDERED:</p> <p>SEALED BID</p> <p>BUYER: 41</p> <p>RFQ. NO.: AUD073145</p> <p>BID OPENING DATE AND TIME</p> <p>PLEASE PROVIDE A FAX NUMBER IN CASE IT IS NECESSARY TO CONTACT YOU REGARDING YOUR BID:</p>						

SEE REVERSE SIDE FOR TERMS AND CONDITIONS

SIGNATURE: *Beth Moore* TELEPHONE: **304-757-7696** DATE: **9/28/06**
 FILE: *Proc Act Rep* FEIN: **23033440** ADDRESS CHANGES TO BE NOTED ABOVE

WHEN RESPONDING TO RFQ, INSERT NAME AND ADDRESS IN SPACE ABOVE LABELED 'VENDOR'

**GENERAL TERMS & CONDITIONS
REQUEST FOR QUOTATION (RFQ) AND REQUEST FOR PROPOSAL (RFP)**

1. Awards will be made in the best interest of the State of West Virginia
2. The State may accept or reject in part, or in whole, any bid
3. All quotations are governed by the *West Virginia Code* and the *Legislative Rules* of the Purchasing Division
4. Prior to any award, the apparent successful vendor must be properly registered with the Purchasing Division and have paid the required \$125.00 registration fee
5. All services performed or goods delivered under State Purchase Orders/Contracts are to be continued for the term of the Purchase Order/Contract, contingent upon funds being appropriated by the Legislature or otherwise being made available. In the event funds are not appropriated or otherwise available for these services or goods, this Purchase Order/Contract becomes void and of no effect after June 30.
6. Payment may only be made after the delivery and acceptance of goods or services
7. Interest may be paid for late payment in accordance with the *West Virginia Code*.
8. Vendor preference will be granted upon written request in accordance with the *West Virginia Code*.
9. The State of West Virginia is exempt from federal and state taxes and will not pay or reimburse such taxes.
10. The Director of Purchasing may cancel any Purchase Order/Contract upon 30 days written notice to the seller
11. The laws of the State of West Virginia and the *Legislative Rules* of the Purchasing Division shall govern all rights and duties under the Contract, including without limitation the validity of this Purchase Order/Contract
12. Any reference to automatic renewal is hereby deleted. The Contract may be renewed only upon mutual written agreement of the parties
13. **BANKRUPTCY:** In the event the vendor/contractor files for bankruptcy protection, this contract is automatically null and void, and is terminated without further order.
14. **HIPAA Business Associate Addendum** - The West Virginia State Government HIPAA Business Associate Addendum (BAA), approved by the Attorney General, and available online at the Purchasing Division's web site (<http://www.state.wv.us/admin/purchase/vrc/hipaa.htm>) is hereby made part of the agreement. Provided that, the Agency meets the definition of a Covered Entity (45 CFR §160.103) and will be disclosing Protected Health Information (45 CFR §160.103) to the vendor

INSTRUCTIONS TO BIDDERS

1. Use the quotation forms provided by the Purchasing Division.
2. **SPECIFICATIONS:** Items offered must be in compliance with the specifications. Any deviation from the specifications must be clearly indicated by the bidder. Alternates offered by the bidder as **EQUAL** to the specifications must be clearly defined. A bidder offering an alternate should attach complete specifications and literature to the bid. The Purchasing Division may waive minor deviations to specifications.
3. Complete all sections of the quotation form
4. Unit prices shall prevail in cases of discrepancy
5. All quotations are considered F O B destination unless alternate shipping terms are clearly identified in the quotation
6. **BID SUBMISSION:** All quotations must be delivered by the bidder to the office listed below prior to the date and time of the bid opening. Failure of the bidder to deliver the quotations on time will result in bid disqualifications

SIGNED BID TO:

Department of Administration
Purchasing Division
2019 Washington Street East
Post Office Box 50130
Charleston, WV 25305-0130



State of West Virginia
 Department of Administration
 Purchasing Division
 2019 Washington Street East
 Post Office Box 50130
 Charleston, WV 25305-0130

Request for Quotation

RFQ NUMBER
AUD073145

PAGE
2

ADDRESS CORRESPONDENCE TO ATTENTION OF:
RON PRICE
304-558-0492

RFQ COPY
 TYPE NAME/ADDRESS HERE

VENDOR

SHIP TO

STATE AUDITOR'S OFFICE
 BUILDING 1, ROOM W100
 1900 KANAWHA BOULEVARD, EAST
 CHARLESTON, WV
 25305-0230 558-2251

DATE PRINTED	TERMS OF SALE	SHIP VIA	FOB	FREIGHT TERMS
09/13/2006				
BID OPENING DATE: 09/28/2006		BID OPENING TIME 01:30PM		

LINE	QUANTITY	UOP	CAT. NO.	ITEM NUMBER	UNIT PRICE	AMOUNT
				304-757-7840		
CONTACT PERSON (PLEASE PRINT CLEARLY):						
Beth Macean						
***** THIS IS THE END OF RFQ AUD073145 ***** TOTAL:						

SEE REVERSE SIDE FOR TERMS AND CONDITIONS

SIGNATURE: Beth Macean TELEPHONE: 304-757-9699 DATE: 9/28/06
 TITLE: MAE FEIN: 23033440 ADDRESS CHANGES TO BE NOTED ABOVE

WHEN RESPONDING TO RFQ, INSERT NAME AND ADDRESS IN SPACE ABOVE LABELED 'VENDOR'

REQUEST FOR INFORMATION

3

WV STATE AUDITOR'S OFFICE

PURPOSE OF THIS DOCUMENT

The West Virginia State Auditors Office (WVSAO) is soliciting information from qualified vendors for products and services required to replace the WVSAO existing check printing system. The information gathered in this process may result in the development of a Request for Proposal (RFP) or Request for Quotation (RFQ)

RESPONSE TO THIS RFI WILL NOT CULMINATE IN AN AWARD.

WVSAO currently utilizes two 185 Page Per Minute (PPM) (1-Up) high speed continuous form printers to print approximately three million documents annually. The WVSAO intends to replace these continuous form printers with two high speed cut sheet printers. The documents printed include a variety of Magnetic Ink Character Recognition (MICR) checks, Wage and Tax Statements (Form W2) and Notification of Deposits (NODS). These items are printed on a minimum of five different form types of various sizes and folds (Z-fold and Eccentric).

Cut Sheet Printer Solution must specifically support the following:

- 1 Must be fully compatible with Unisys Enterprise Output Manger (EOM) and Web Assistant version 6.1.2 or later software
- 2 Existing form and print designs must be migrated into EOM
- 3 Migration and implementation to be completed within 18 months from start date
- 4 Must be capable of 160PPM (1-Up) print speeds
5. The interface to printers must use Ethernet 100 Base T (minimum) Transmission Control Protocol/Internet Protocol (TCP/IP)
- 6 Interchangeable developer stations for MICR and non-MICR printing
7. Simplex or Duplex Printing, with the Native Printer Code being PCL5e or later
- 8 Paper Types: Standard laser copy paper, Suitable perforated papers, Pre-printed papers, Carbonless paper, Coated paper, Adhesive Labels, and Tabs
- 9 Paper Weights: 16-51 lbs. (Letter), 16-32 lbs (Legal), and 32-51 lbs. (Tabs)
- 10 Paper Formats: Letter, Legal, Ledger, A4, A4+, A3, A3+, B4 and variable formats from 203 x 210 mm to 432 x 310 mm.
- 11 Support form types that include Z-fold (checks) and Eccentric fold (W2's)

The WVSAO point of contact for this RFI is:

Mike Withrow, Assistant Controller

WV State Auditors Office

4916 Kanawha Blvd E

Malden, WV 25306

304 926 1717

mike.withrow@wvsao.gov

AFFIDAVIT

West Virginia Code §5A-3-10a states:

No contract or renewal of any contract may be awarded by the state or any of its political subdivisions to any vendor or prospective vendor when the vendor or prospective vendor or a related party to the vendor or prospective vendor is a debtor and the debt owned is an amount greater than one thousand dollars in the aggregate

DEFINITIONS:

"Debt" means any assessment, premium, penalty, fine, tax or other amount of money owed to the state or any of its political subdivisions because of a judgment, fine, permit violation license assessment defaulted workers' compensation premium penalty or other assessment presently delinquent or due and required to be paid to the state or any of its political subdivisions, including any interest or additional penalties accrued thereon

"Debtor" means any individual, corporation partnership, association limited liability company or any other form or business association owing a debt to the state or any of its political subdivisions

"Political subdivision" means any county commission; municipality; county board of education; any instrumentality established by a county or municipality; any separate corporation or instrumentality established by one or more counties or municipalities, as permitted by law; or any public body charged by law with the performance of a government function or whose jurisdiction is coextensive with one or more counties or municipalities

"Related party" means a party, whether an individual corporation, partnership, association, limited liability company or any other form or business association or other entity whatsoever, related to any vendor by blood, marriage ownership or contract through which the party has a relationship of ownership or other interest with the vendor so that the party will actually or by effect receive or control a portion of the benefit profit or other consideration from performance of a vendor contract with the party receiving an amount that meets or exceed five percent of the total contract amount

EXCEPTION:

The prohibition of this section does not apply where a vendor has contested any tax administered pursuant to chapter eleven of this code workers' compensation premium permit fee or environmental fee or assessment and the matter has not become final or where the vendor has entered into a payment plan or agreement and the vendor is not in default of any of the provisions of such plan or agreement

LICENSING:

The vendor must be licensed in accordance with any and all state requirements to do business with the state of West Virginia

CONFIDENTIALITY:

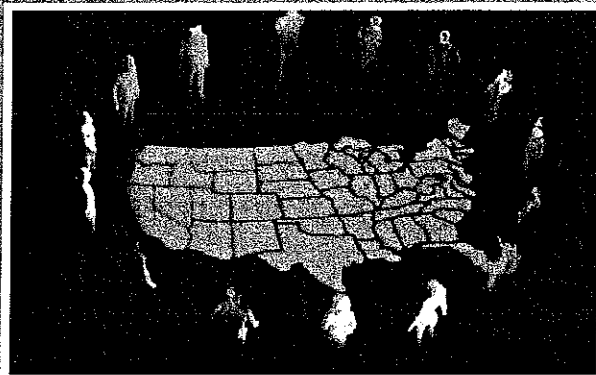
The vendor agrees that he or she will not disclose to anyone, directly or indirectly any such personally identifiable information or other confidential information gained from the agency unless the individual who is the subject of the information consents to the disclosure in writing or the disclosure is made pursuant to the agency's policies, procedures and rules Vendors should visit [www state wv us/admin/purchase/privacy](http://www.state.wv.us/admin/purchase/privacy) for the Notice of Agency Confidentiality Policies

Under penalty of law for false swearing (West Virginia Code §61-5-3), it is hereby certified that the vendor acknowledges the information in this said affidavit and are in compliance with the requirements as stated

Vendor's Name: TRON OFFICE SOLUTIONS

Authorized Signature: Kelly Daugherty Date: 9/28/06

Proposal for West Virginia State Auditors Office



Submitted by IKON Office Solutions, Inc.



**Document Efficiency
At Work.™**

Table of Contents

Executive Summary	2
General Information	6
Manufacturers' Literature	16

Executive Summary

Introduction

This proposal represents the IKON Office Solutions, Inc. (IKON) offer to provide world-class support and benchmarked services for the State Auditors Office in response to RFQ AUD073145

*IKON Office Solutions
is West Virginia's best
partner for providing
print solutions.*

IKON appreciates the opportunity to provide a MICR printing solution that will:

- **Print from your Unisys Output Manager**
- **Combined print speeds of 300 impressions per minute**
- **Have MICR capabilities that utilize interchangeable toner stations**
- **Accommodate a wide range of paper sizes and stocks – including Carbonless, Tabs, Z-Fold Check Stock**
- **Service, Support, Training, and Installation all handled by IKON.**
- **References within WV State Government as well as other states.**
- **IKON will conduct a full needs analysis for your cut sheet solution**

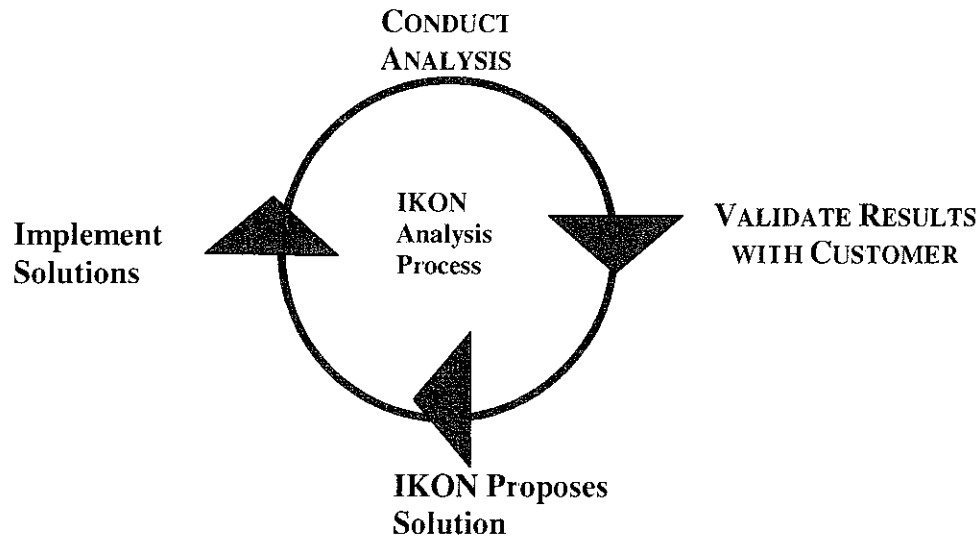
Although we have complied with all aspects of this RFI, we feel that it is necessary to point out the benefits of having IKON perform an on site assessment and further understand your initiatives and future goals. In any potential solution situation, an assessment of a prospective client's needs is critical to providing the best solution. The level at which the State Auditor's Office has embraced the advantages of technology and proven standard operating systems will determine the type of recommendations that are best suited for a solution. The more information we can obtain on your expected needs and current operating systems, the more accurate the recommendation.

Analysis Objectives

IKON's approach to the Analysis is to provide our prospective clients with an objective "snapshot" of their current operations from which to evaluate the feasibility of a partnership with IKON. The objective of the analysis is to:

- Provide a thorough current cost analysis to obtain an accurate basis to determine and compare future financial ramifications
- Perform a complete assessment of the services including systems and procedures, workflow layout, as well as end user perceptions and needs
- Identify existing constraints such as physical space, contract termination costs, organizational culture, etc. that would effect the final recommendations and the costs to implement an outsourcing solution
- Determine key quality indicators that will be used as benchmarks upon implementation

IKON's analysis process is an ongoing and critical development of quantitative and qualitative data that we will maintain with your Programs. The analysis allows us to develop both an operational and financial baseline to determine whether an IKON solution can bring value to your state agency. The diagram below represents the continuous nature of IKON's analysis process.



IKON's analysis process seeks to capture information in four areas that relate to your support operations. Those areas are as follows:

1. Direct and Indirect Costs – Volumes of work and expenses. How many documents are produced on a monthly basis? IKON collects this data by thoroughly auditing customer invoices and logs.
2. Processes and Procedures – What are the document processes in the Print Center? Are there Mission Critical Documents? Who owns these documents? When do people use/produce these documents? What timeframes impact these processes? IKON collects this data by spending time observing and mapping your document operations.
3. End-user Satisfaction – How well do current document procedures operate? IKON collects this data by interviewing key end users.
4. Strategic Planning – How does the current document strategy relate to WV Bureau of Employment Programs organizational objectives? What changes need to occur to ensure the strategy helps the State Auditors Office meet its goals? IKON collects this data by interviewing decision makers and policy setters inside the State Auditors Office.

IKON's goal in providing WV Correctional Industries the highest quality solution is twofold. Our goals are to: ***Define the best solution*** and ***Provide the right resources and support***. The best solution will allow the State Auditor's Office to concentrate on core competencies. IKON's Account Team assumes

responsibility for the technology and people necessary to support State Auditor's Office critical print services

Why IKON

Commitment to State Auditor's Office requirements

IKON's sole objective is to support your success. IKON, together with the State Auditor's Office, would like to develop a strategy for supporting the State Auditor's Office going forward that we believe can increase the level of service and support currently provided. Our consultative approach will provide State Auditor's Office with a solution that strategically blends the most effective combinations of world-class resources and support. Our long-term goal for the State Auditor's Office, therefore, is to develop an enterprise-wide services and document management strategy that will take full advantage of digital technologies and services, designed to improve workflow, increase productivity, and lower your total cost of ownership throughout your enterprise.

The IKON vision of a strategic partnership is based upon the following fundamental components:

- **Consultative Approach** based upon knowing and communicating regularly with WV Bureau of Employment Programs representatives. This includes developing solutions based on understanding our customers' objectives- IKON is committed to solutions that allow the State Auditor's Office to focus on its core mission.
- As an **Integrated Solutions/Technology provider**, not a manufacturer, IKON has unrestricted access to "best of breed" technology solutions. IKON's strategic partnerships with companies such as IBM, Canon, Microsoft, Adobe, I/R Systems, EFI, Ricoh, Equitrac, Uniprint and Hewlett-Packard among many others ensure our customers are always presented with the best possible solution to meet their unique
- **Strong Operational Processes and Procedures** ensure that our people are equipped with the right tools to effectively implement customer solutions. Regular auditing and monitoring ensures compliance and our account management process provides a forum for continuous process improvement discussions and project implementation.
- **IKON's National Network and Resources** of sales, service and technical support allows us to implement solutions (services and products) to meet the current and future needs of the State Auditor's Office with the support of both the global expertise and a dedicated Local Strategic Account Team.
- **IKON's Performance Accountability** will insure that our performance is fact based and measurable. IKON utilizes technologically advanced tools and procedures to provide the State Auditor's Office with results that meet or exceed your service level requirements.

Proven Excellence

Our most significant value proposition consists of the breadth of our management solutions. None of our competitors offers the range of on-site personnel support, equipment, technology, vendor partnerships and value-added services such as consulting, a network of digital print centers, eServices, and various outsourcing offers that IKON provides for our customers.

As a result of IKON's overall value proposition, we have realized the following achievements:

- IKON is the largest independent distributor of office equipment in North America
- IKON is the second largest facilities management provider in North America
- IKON is the only provider that offers a network of digital document production hubs in the U.S.
- IKON is the largest provider of print-on-demand services in the U.S.
- IKON is the leading provider of legal document services in North America
- IKON is a leading provider of Web-based and e-commerce solutions
- A 2002 Track Record that includes conducting business with all of the Fortune 10 companies, with 95% of the Fortune 100 companies, and with 96% of the Fortune 500.

Proposal Organization

IKON has organized this proposal in accordance with the solicitation instructions and has included information to illustrate how our solution meets the selection criteria and justifies selection as a partner for the State Auditors Office

Next Steps

If you have any questions or require clarifications regarding our proposal, please contact Beth Marcum at 1-877-696-3784 or Bmarcum@IKON.com. It is our sincere hope that we can provide you with the highest quality support services in the industry. Upon your review, we look forward to discussing our proposal with you in more detail.

General Information

Provided in the following sections are the completed questions and requirements from RFI #AUD073145. To simplify your review, IKON has organized the following sections according to the structure provided in the RFI. IKON's responses are presented following the appropriate RFI text. The State Auditor's Office question or requirement from the RFI is provided in **blue** text; IKON's responses are provided in black text as follows;

Question/requirement

IKON response

Purpose of this Document

In response of the State Auditor's Office intentions of acquiring two enterprise-printing solutions to replace existing print systems, IKON is pleased to respond to the RFI.

Printer Specifications



To meet the Printer Specifications, IKON is pleased to provide the State Auditor's Office with two Canon ImageRunner 150VP MICR Print Systems

The Canon ImageRUNNER IR150 VP MICR offers the following:

The Canon imageRUNNER Pro 150VP MICR, is an innovative printer that raises the bar for high-speed, high-volume networked printing. It's one of IKON's and Canon's fastest and most powerful digital printing solutions to date, operating at a combined print speed of 300 pages per minute with top image quality and a wide range of finishing capabilities. 150VP will not only print at high-speed, it also has the stamina to handle the heaviest of heavy-duty workloads with as little downtime as possible. The device comes with a vast array of standard features, including a three-way 4,000-sheet paper supply with variable paper size capabilities and variable pitch printing support.

Powered by a Sun® controller, the imageRUNNER Pro 150VP can handle Adobe® PostScript® 3, PCL 6, PDF, and TIFF output requirements. High-conversion speeds in the raster image processor (RIP) and electronic job spooling in the memory allow busy production environments to print the first complete set of a job in record time.

With its stellar engine speed, a duty cycle of 2.5 to 4.25 million impressions per month (depending on customer job stream and number of shifts), and flexible hardware and software configurations, the imageRUNNER Pro 150VP was designed with today's most demanding, paper-intensive production tasks and taskmasters in mind. Data centers, corporate reprographic departments, service

bureaus, commercial printers, and even book publishers can now mass produce a broader range of complex print and copy jobs faster and more cost-effectively.

Features and Benefits of the imageRUNNER Pro 150VP

- Flexible paper size ranges of 14 3/32" x 18x5" to a minimum size of 7" x 8 27"
- Paper capacity standard of 4,000 sheets expandable to 12,000 sheets
- Combined Print Speeds of 300 impressions per minute
- Duty cycle up to 4.25 million per month
- MICR Ready

IKON has reviewed and understands the Printer Specifications section and is prepared to provide the State Auditor's Office with a solution that includes:

- 1 Printer must be fully compatible with Unisys Output Manager.

Unisys Output Manager Prints to virtually any printer, including Windows printers, Novell NetWare printers, network printers, and LPR/LPD print queues. This is compatible with the IKON Solution

- 2 Existing form and print designs must be migrated into EOM

IKON will conduct a full analysis to migrate forms into EOM

- 3 Migration and implementation to be completed within 18 months from start date.

IKON will present a State of Work to complete job with 18 months after conducting a full analysis

- 4 Must be capable of 160 PPM print Speeds

Combined speed of 300 pages per minute

- 5 The interface to printers must use Ethernet 100 Base T/ TCP/IP

The IKON Solution meets these requirements for connectivity

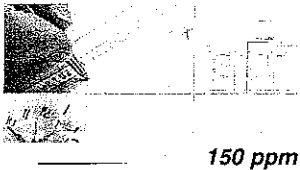
6. Interchangeable developer stations for MICR and non-MICR printing

The Canon ImageRunner Print System from IKON complies with these requirements

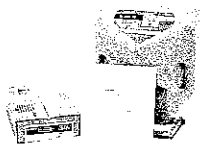
Magnetic Ink Character Recognition (MICR) Support

MICR Support

- ▶ Can add MICR 'now or later'
- ▶ Registration provides MICR line placement repeatability
- ▶ Custom font meets ANSI optical and magnetic standards
- ▶ Multi-up checks supported with expanded sizes
- ▶ Hi-quality MICR toner
 - Suppasses the most stringent standard for reader/sorter reject rate (the APACS standard)
 - Meets the most stringent standard for toner adhesive to paper (PIPA)
 - Withstands multiple passes through reader/sorters with no loss for magnetic signal strength



150 ppm

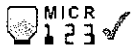


Ⓞ 1 2 3 4 5 6 7 8 9 0 1 2 3 4 5 6 7 8 9 0
E13B font - Used in North America


Ⓞ 1 2 3 4 5 6 7 8 9 0 1 2 3 4 5 6 7 8 9 0
CNC7 font - Used in Europe, South America

Solutions for Data Center

Reliably handles typical Data Center job streams & more complex MICR jobs




Easy "switch out" of toner station (MICR and Non-MICR) – Data Center and CRD with one machine!



Greater application reach for Data Centers – including check printing and bar code applications

- Software includes special MICR fonts



7. Simplex or Duplex Printing with Native Printer Code being PCL 5e or Later.

The Canon ImageRunner Print System from IKON complies with these requirements

8. Paper Types: Standard laser copy paper, Suitable perforated papers, Pre-printed papers, Carbonless paper, coated paper, Adhesive Labels and Tabs

The Canon ImageRunner Print System from IKON complies with these requirements.

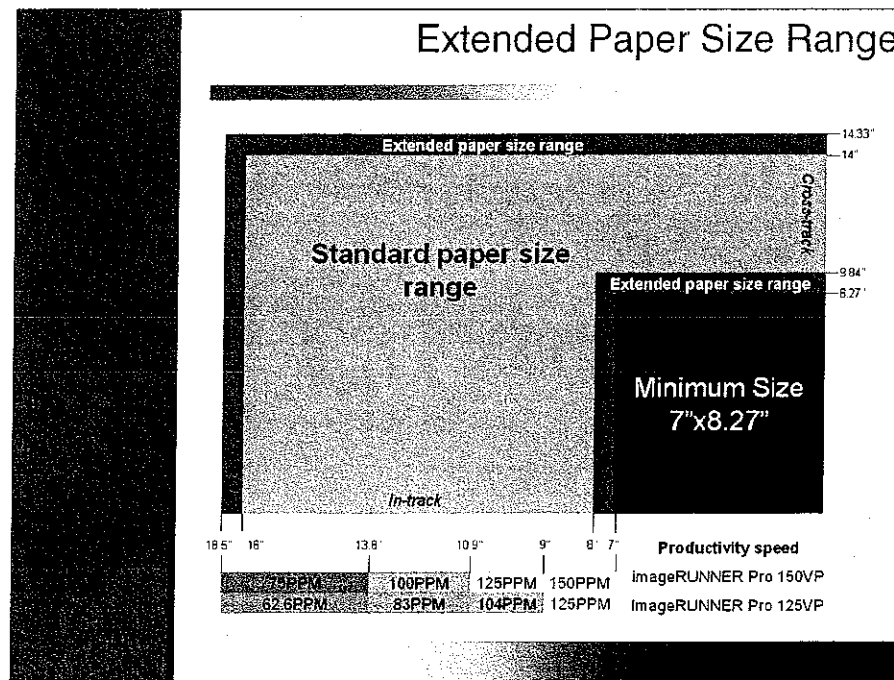
IKON can provide local references in Charleston that utilizes similar systems, included West Virginia Correctional Industries, Kanawha County Public Schools, and West Virginia Dept. of Educations. Additionally IKON provides that state of KY and WV with similar solutions in state government.

- 9 Paper Weights: 16-51 lbs, 16-32 lbs, and 32, 51 lbs

The Canon imageRUNNER 150VP MICR System supports paperweights from 16lb to 150lb paperweights

- 10 Paper Formats: Letter, Legal, Ledger, A4, A4+, A3, A3+, B4 and variable formats from 203 x 210mm to 432 x 310mm

The Canon ImageRunner Print System from IKON complies with these requirements



- 11 Support form types that include Z-Fold (checks) and Eccentric fold (w2's)

The Canon ImageRunner Print System from IKON complies with these requirements.

Additional Information

IKON Performance Guarantee

Quality service builds customer confidence, encourages new sales, and repeats business. IKON is dedicated to providing SAO the best possible service. Our products and services bring profits only to the degree that they serve and satisfy your needs. This demands that we:

- Know our customers, meet their present needs, and help them anticipate future requirements
- Help our customers use our products and services in the best possible way
- Provide superior equipment maintenance and support services

Highest Quality Service

IKON is committed to meeting your service requirements – now and in the future.

Only IKON backs you with a specially trained team members including a Digital High Volume Specialist, a Digital High Volume Analyst and no less than three Image Systems Customer Service Technicians and Customer Service Specialists. IKON provides support with local, dedicated production teams, including service technicians and systems analysts, specifically trained to meet the needs of high-volume customers. Our teams build solid relationships and develop an in-depth understanding of our customer's operations to ensure maximum responsiveness and uptime. IKON also maintains a large inventory of standard parts—both locally and across the country—to minimize downtime.

IKON's Full Service Maintenance programs protect your investment in the imageRUNNER 150 printing system. A variety of plans and options are available to meet your requirements. Reliability is built into every IKON solution, which ensures maximum availability for your business. However, when unforeseen problems occur, you can be assured that IKON, one of the largest service providers in the country will provide prompt, efficient maintenance. We maintain extensive local parts availability to minimize any potential downtime.

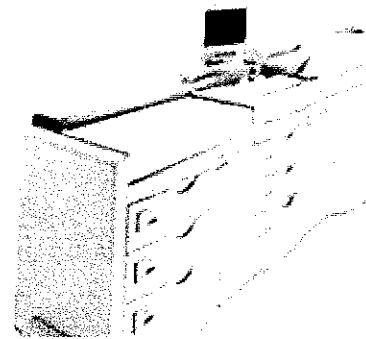
IKON's award winning service programs offer you the following benefits:

- **2-hour average service response time** – your technician will call you within 30 minutes of your request to assess the nature of your interruption, and then will be at your office promptly. Our national response time average is under 2 hours at no additional charge.
- **Service when you need it** – IKON service is available 24 hours a day, 365 days a year.

- **Outstanding Hotline Support** – our best people are on duty to assist your technician anytime
- **Software fixes/ patches, free software updates** – provides the most current, up to date software at no additional cost
- **Customer Application Support** – as your business requirement change, we are there to advise and assist.
- **Guarantee of Service and Parts availability** for a minimum of 7 years - no need to worry about obsolescence due to unavailability of parts
- **Fee Based custom application development and support** – our seasoned analyst group has tremendous talent and capability to assist in solving and developing custom solutions, which are tailored to your specific requirements

Total Customer Protection Program

IKON offers a **Total Customer Protection Program** for customers who lease or purchase a Canon imageRUNNER 150. The Total Customer Protection Program includes the availability of dedicated imageRUNNER 110 service technicians available 24 hours per day, 7 days a week with an average onsite response time of two hours. Total Customer Protection Program technicians carry a substantial car stock of crucial imageRUNNER 125 parts and have access to top-level systems analysts for necessary support in order to resolve issues as expeditiously as possible.



IKON's Total Customer Protection Program covers the imageRUNNER 150

Customers participating in the Total Customer Protection Program who may become dissatisfied with an imageRUNNER 125 because of any issue not caused by the customer have the following options

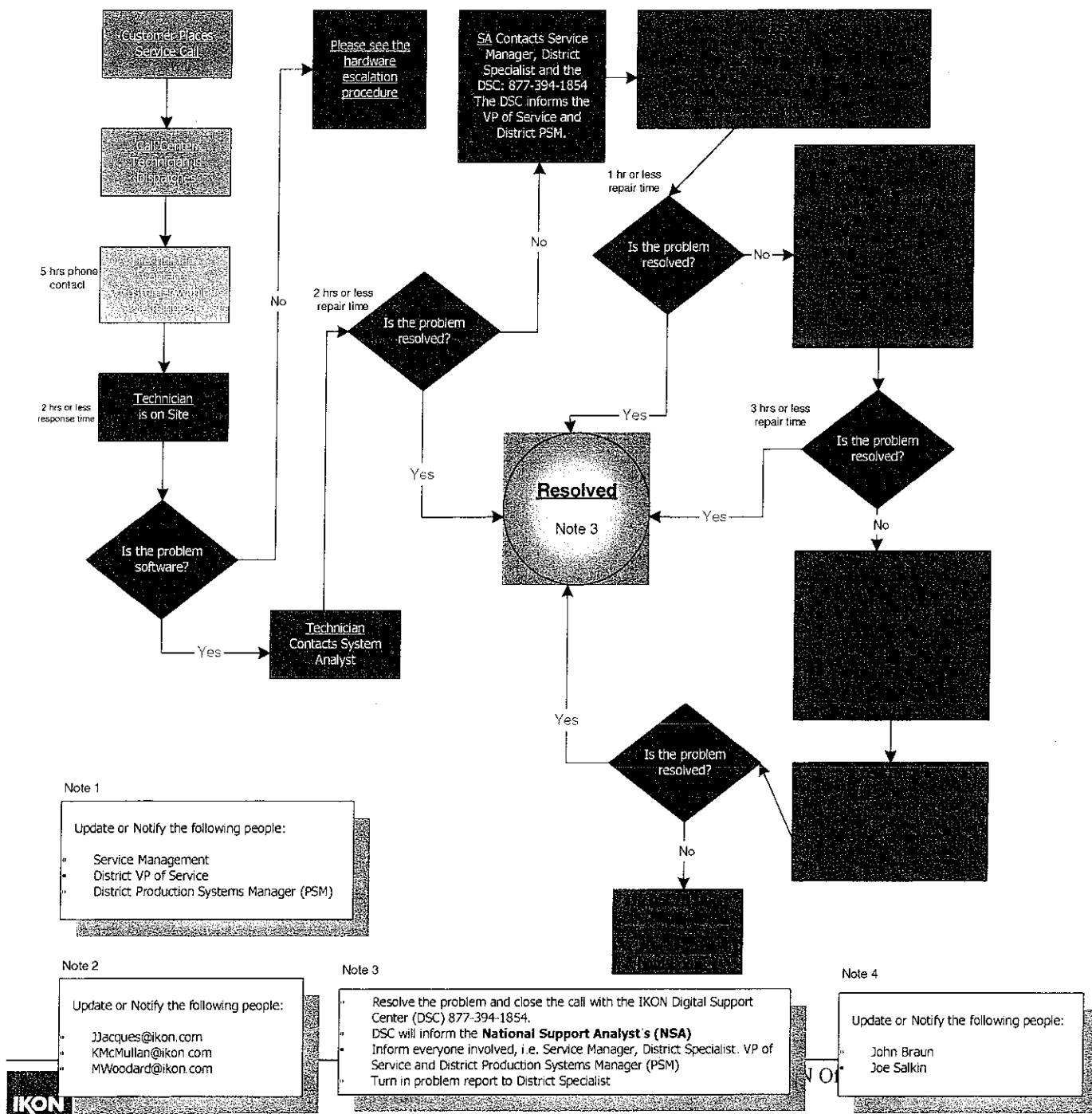
- IKON will conduct a thorough assessment and testing of the Canon imageRUNNER 125 to identify the source of the performance issues.
- IKON will attempt to correct the performance of the Canon imageRUNNER 125, or related enabler in a mutually agreed-upon timeframe
- If IKON is unsuccessful in correcting such performance issues within the agreed-upon timeframe, IKON will replace the Canon imageRUNNER 150 with a like product.

The Total Customer Protection Program covers Canon imageRUNNER 125's that have been continuously maintained by IKON under an IKON maintenance agreement for three years after the initial delivery of the equipment, unless IKON has financed the equipment for more than three years, in which case the program will remain in effect during the entire initial term of your lease with IKON

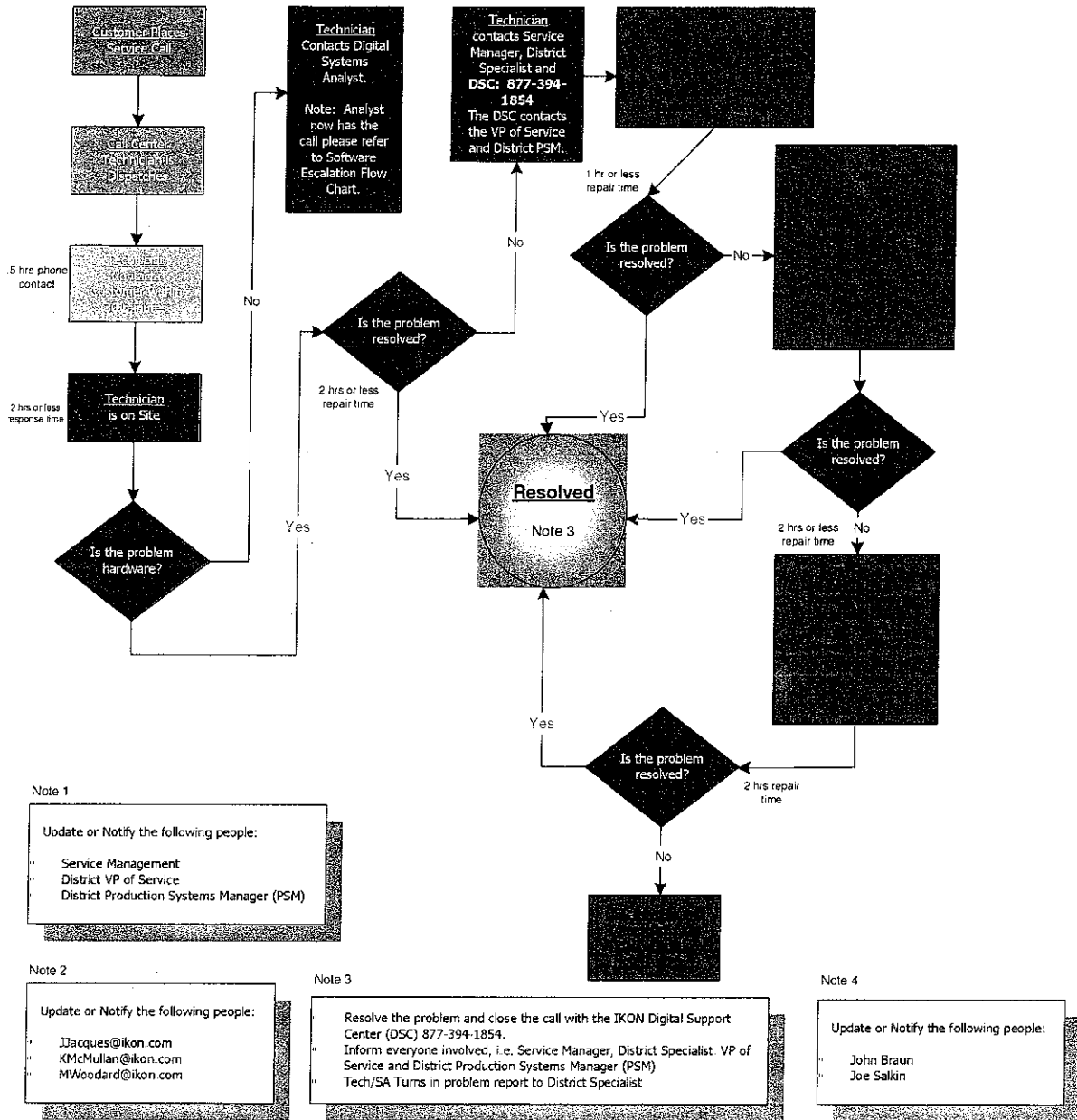
Service Call Escalation

The graphics that follow illustrate IKON's call escalation process for the imageRUNNER125. This escalation procedure triggers whenever a call is not closed out quickly or in the allocated national timeframe.

imageRUNNER 150 Software Call Escalation



imageRUNNER 150 Hardware Call Escalation



Preventative Maintenance

A complete system diagnostic report is completed on every on-site service call received for the Canon imageRUNNER 150. Preventive maintenance is then performed according to the results of the diagnostic results. It is the mission of IKON to anticipate and prevent hardware and software failure. This methodology and procedure has allowed IKON to provide exceptional service and maintain a two-hour response time for the Canon imageRUNNER 150-product line.

In addition to the technical service that IKON provides, it is comforting to note that the imageRUNNER 150 System was developed to deliver superior productivity and uptime. In each key subsystem of the imaging chain, attention was given to provide a print on demand solution requiring minimal operator attention.

The toning subsystem was upgraded from previous products to allow for expanded toner supply capacity. A massive 2.5 Kg toner supply bottle gives nearly 3 times the capacity of our previous duplicators and printers. The result is a toner supply large enough to produce more than 70,000 images without operator intervention. A new bottle design allows the operator to quickly replace the toner supply bottle when it is needed with little effort or mess. The increased bottle size and easy replacement features mean that operators spend less time adding toner and more time delivering work.

The most critical corona chargers in the printer have been equipped with automatic wire cleaners. These cleaners wipe the corona wires at power-up and after every 10,000 images. This significantly reduces streaking on the prints produced by the imageRUNNER 150 System. The automatic wipers also reduce the frequency required for manually cleaning and replacing the corona wires in the printer. The result is cleaner prints for longer intervals.

The fuser oil reservoir has been increased in size. The imageRUNNER 150 System can run for in excess of 1 million impressions before oil is required. Refilling the reservoir is an extremely simple procedure. The operator just pivots out the reservoir, removes the cap, refills it with a new supply bottle, and the engine is ready to go. There is even an oil-low indicator to alert the operator when oil needs to be added. This will allow the operator to choose a time that will have the least impact on production schedules.

Canon ImageRunner 150VP MICR Highlights

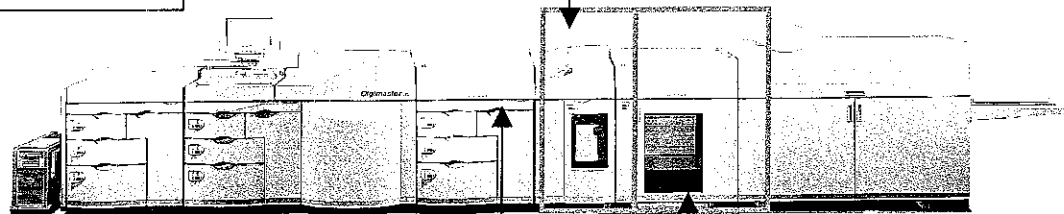
- Three paper supplies, expandable to nine
- 150 page per minute print speed – 300 combined
- Open architecture print system – Postscript and PCL
- Short straight paper path – at waist level, easy to clear misfeeds
- Unix based platform
- MICR Printing



Finisher/ Stitcher Standard

- Offset and Straight Stacking
- Collate Capability
- 3,000 Sheet Capacity
- Measured Stitch (Staple) through 100 Sheets

- The IR150VP MICR system will have a Finisher and an optional High Capacity Stacker giving stacking capabilities of standard 3,000 sheets upgradeable to 18,000 sheets. There is also a 500-sheet top exit tray.



High Capacity Stacker - Optional

- Offset and Straight Stacking
- Collate Capability
- 5,000 Sheet Capacity
- Two Removable Dollies
- Can Add Extra High Capacity Stacker if Needed

Short Paper Path

- Waste level paper path
- 3.5 feet
- Easy to access interior of system

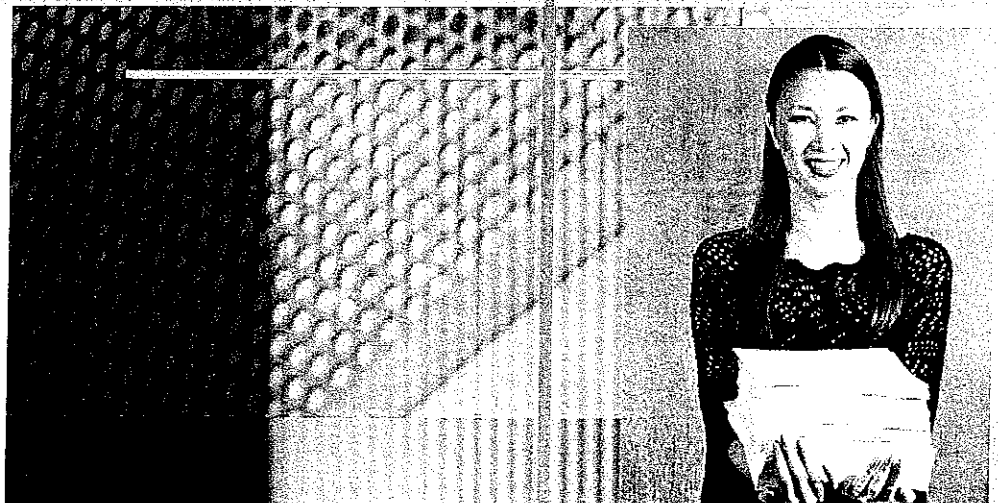
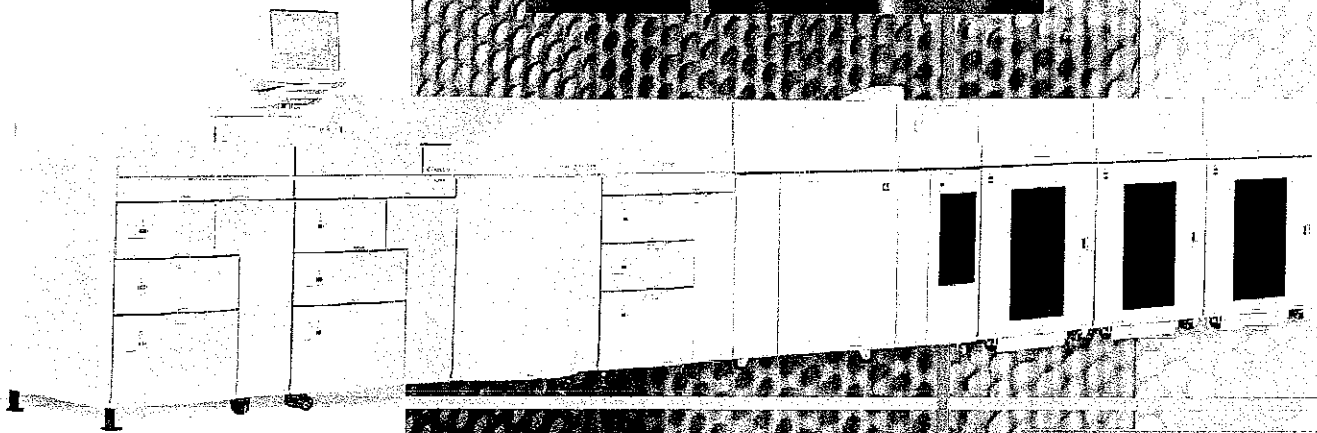
UNIX Sun blade

Manufacturers' Literature

Canon



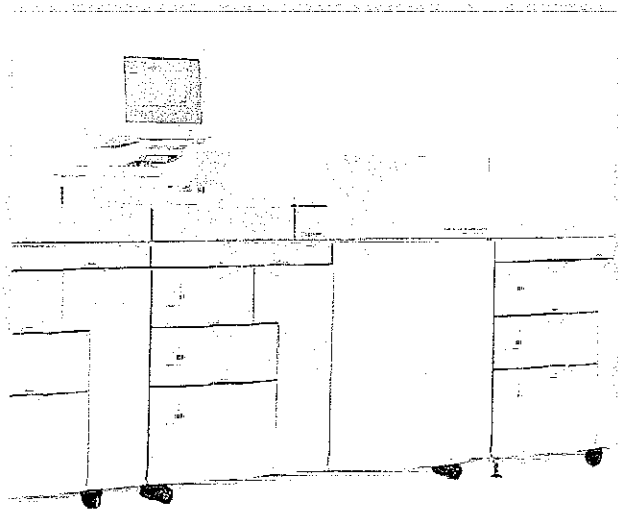
PRODUCTION
SYSTEMS



imageRUNNER
Pro 150VP
PRODUCTION SYSTEM

THE CANON imageRUNNER® Pro 150VP,
A HIGH-SPEED, HIGH-VOLUME
NETWORKED PRODUCTION ENGINE
OFFERING UNPARALLELED FLEXIBILITY
IN CONFIGURATION AND DESIGN.

Introducing the imageRUNNER Pro 150VP.
A Very Powerful black-and-white
production printer that combines out-
standing performance with Variable
Paper and Variable Pitch capabilities.



Robust enough to support up to five million prints per month, the 150-page-per-minute imageRUNNER Pro 150VP is designed to handle the demanding needs of your production business. The device comes with an impressive array of standard features, including an 8,000-sheet paper supply with variable paper size capabilities up to 14 3/8" x 18.5"* and variable pitch printing support that allows you to print odd paper sizes without a significant drop in machine-rated speed. Other best-in-class features include outstanding 600 x 600 dpi print quality and an easy-to-use operator control interface. A wide range of in-line finishing options—puncher, saddle-stitched booklet-maker, perfect binder, and more—are also available to customize the engine to meet your specific application needs.

For transactional print environments, the versatile design of the imageRUNNER Pro 150VP also allows you to upgrade the engine to support secure Magnetic Ink Character Recognition (MICR)* printing applications. Interchangeable toning stations can be easily swapped out between print runs so that both MICR and other high-quality printing can be accomplished on the same system. The integrity of MICR jobs is constantly maintained through security features built into the design of the print production software.

What's more, the imageRUNNER Pro 150VP printer's open design allows you to integrate the system easily into your existing workflow, whether that includes other Canon products or your own third-party value-added solutions. The imageRUNNER Pro 150VP is not only the best total solution for your production-intensive environment today, but it's a safe investment choice for businesses that expect to grow and change in the future. With the Canon imageRUNNER Pro 150VP, you're never locked into a proprietary workflow; you can add paper supplies, finishing capabilities, and other options at any time over the life of the product.

*Optional license upgrade is required

STURDY DESIGN, POWERFUL CONTROLLER

Rated for 3 to 5 million impressions per month, the imageRUNNER Pro 150VP can support the heavy workloads typical of production environments. It performs best when put to the test, so load up your jobs, stand back, and watch it run.

Powered by a SUN™ controller, the imageRUNNER Pro 150VP can handle Adobe® PostScript® 3,™ PCL 6*, PDF, and TIFF output requirements. High-conversion speeds in the raster image processor (RIP) and electronic job spooling in the memory allow busy production environments to print the first complete set of a job in record time. Unlike many competitive systems which must spool and process an entire job before printing begins, the imageRUNNER Pro 150VP prints in page order so that printing can begin almost immediately. A first-set proof can be obtained quickly and reviewed for approval before committing to a long print run

The imageRUNNER Pro 150VP comes with robust print production software that drives all machine operations. The software ships preloaded on the system controller, reducing installation time so that the machine can be up and running at your site quickly. Within the system software are several licensing options that enable additional engine functionality to support specific applications in commercial print and transactional print environments. These options include MICR* printing, Enhanced Feed Mode* for handling of heavy and coated stocks, and Digital Print Quality Adjustments*

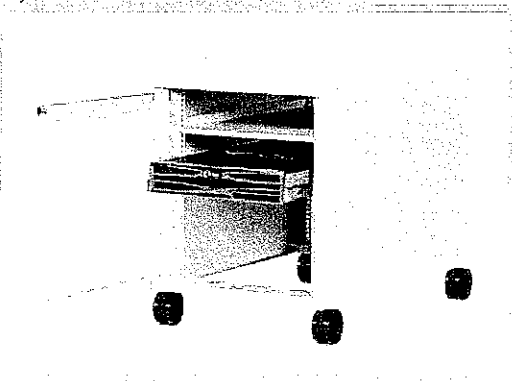


A LASTING IMPRESSION

Just one glance at a finished document printed on the imageRUNNER Pro 150VP is all it takes to see the superior image quality that this device produces. Rich blacks, crisp, clean lines, and outstanding halftones are evident in page after page of output

The secret behind the imageRUNNER Pro 150VP printer's impressive image quality lies in advanced imaging technologies that help make critical documents look their best. Advanced Light Emitting Diodes (LED) provide enhanced dot definition, uniformity, and reliability; Gray Resolution Enhancement Technology (GRET) helps to produce text and lines with excellent edge definition and smoothness; and, Small Particle Developer (SPD) ensures smooth solids, sharp text, and low levels of background. Active registration—both in-track and cross-track—further contributes to the imageRUNNER Pro 150VP printer's ability to produce documents that deliver maximum visual impact.

System Controller



Exceptional Productivity for a Wide Range of Paper Sizes:

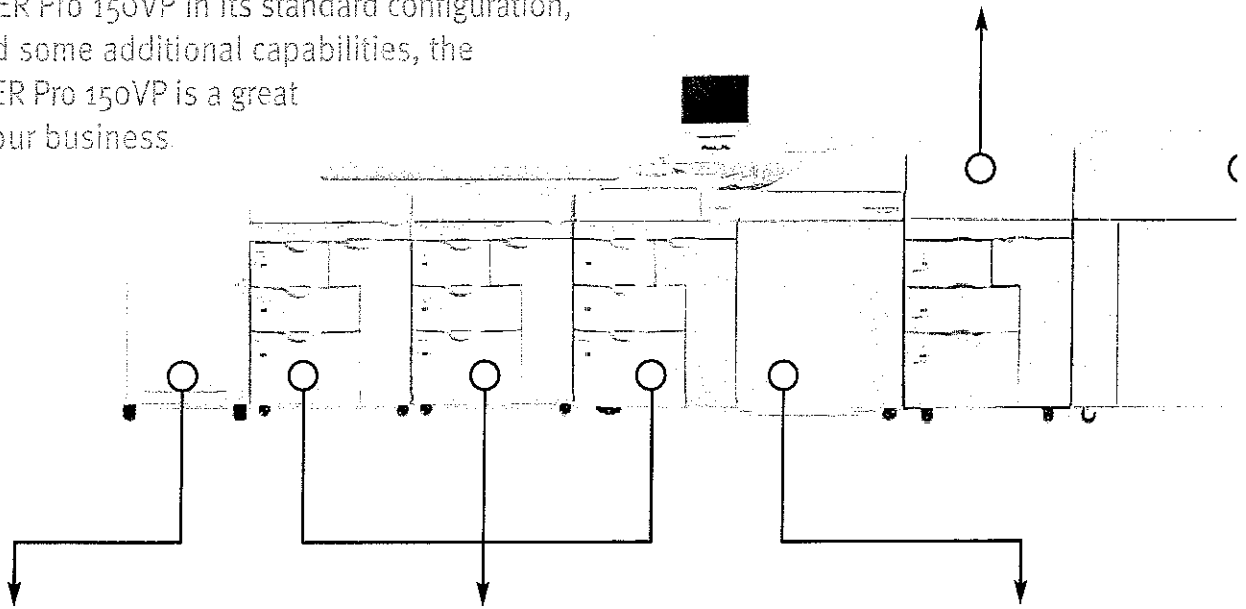
- 150 ppm for paper width 7" - 9"
- 125 ppm for paper width >9" - 10 9"
- 100 ppm for paper width >10 9" - 13 8"
- 75 ppm for paper width >13 8" - 18 5"



DESIGNED WITH THE END-USER IN MIND

In its most basic configuration, the imageRUNNER Pro 150VP comes with the marking engine, print controller, two three-drawer paper supplies, and a finisher. But that's just the beginning of what this engine can do. You can select from a broad range of additional options to customize the device to meet your specific business requirements. In-line finishing options can reduce the amount of manual collation that's currently done—or eliminate it completely. Whether you purchase the imageRUNNER Pro 150VP in its standard configuration, or opt to add some additional capabilities, the imageRUNNER Pro 150VP is a great choice for your business.

Easy Access - Add the Inserter to your system to easily incorporate preprinted materials into finished documents. Three convenient drawers (two 1,000-sheet, one 2,000-sheet) feed your inserts at machine-rated speed—eliminating the need for costly outsourcing or time-consuming manual collation.



ImageRUNNER Pro 150VP - Running on a UNIX® operating system, the Canon imageRUNNER Pro 150VP provides robust system performance across a wide variety of job streams.

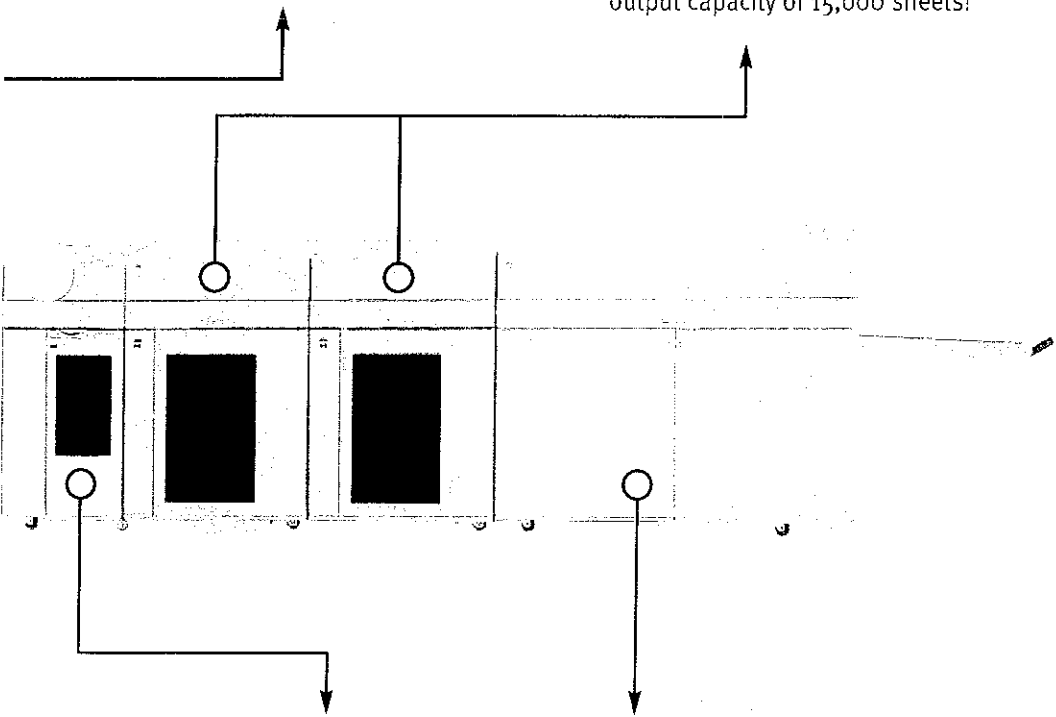
Paper Supply Modules - Two 4,000-sheet Paper Supply Modules come standard with the device, with an option to add one more. Maximum online capacity is 12,000 sheets from nine different sources, allowing you to create documents containing multiple paper types, colors, and exceptions. Paper drawers are adjustable, and most can support paper sizes from 7" x 8.27" to 14.33" x 18.5" and in weights from 16 lb. Bond to 150 lb. Index.

Marking Engine - With powerful print production software, the imageRUNNER Pro 150VP is available in several different unique configurations that will help you drive the productivity of your business to new levels.

Standard Punching - Produce hole-punched, ready-to-bind documents with the in-line Puncher option. A variety of optional punch tools are available, all of which are interchangeable by the key operator

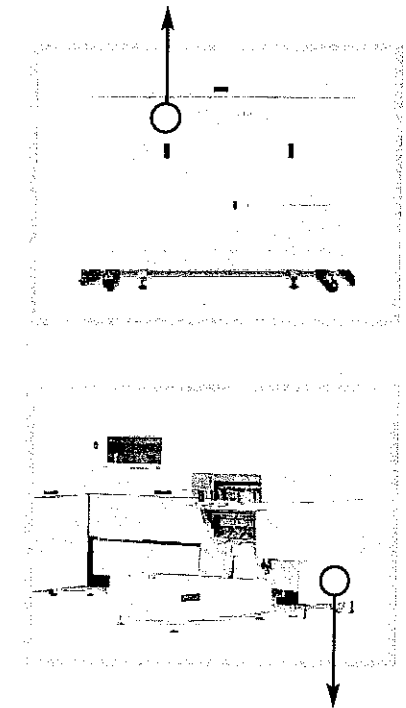
Optional Stacker - Up to 5,000 sheets can be output to the optional Stacker and transported to off-line finishing devices with the handy, rolling removable dolly. Or chain up to three stackers together for an output capacity of 15,000 sheets!

Cylinder Binding Reformatting (Cylinder Binding) BPRF - Increase the productivity of the Perfect Binder with the BPRF. This accessory sends two-up images to the Perfect Binder so that more books can be produced in less time and with reduced paper waste



Finisher - A standard feature of the imageRUNNER Pro 150VP, the Finisher can accommodate up to 3,000 sheets and perform measured stitching of up to 100 sheets at a time.

Optional Booklet-maker - If booklet-making is a requirement, you can produce saddle-stitched booklets of up to 88 pages (22 sheets) in 5.5" x 8.5" or 8.5" x 11" sizes. The optional Booklet-maker also includes a trimmer and an output tray that can hold up to 42 finished booklets. The Booklet-maker requires the Stacker for operation.



Optional Perfect Binder - Perfectly bound books, from 15 sheets up to 1.5" thick (approximately 350 sheets), are produced on the Perfect Binder on-demand, automatically. Utilizing a hot bind glue technology, the Perfect Binder also provides milling and scoring capabilities as well as paper waste collection. An automatic cover feeder and output stacking module enable ready-to-pack stacking. The Perfect Binder requires the Stacker for operation.



THE PRODUCTIVITY YOU EXPECT, REGARDLESS OF JOB COMPLEXITY.

The paper requirements of a print job often have a negative impact on the time it takes to produce output. Odd paper sizes, loading and unloading of special paper stocks, and manual collation of preprinted and heavier materials can add minutes or hours to overall job time. The imageRUNNER Pro 150VP, however, handles the advanced paper requirements typical of production workflows with ease. In fact, there is usually little or no loss in machine-rated speed.

Flexible Paper Supply

The imageRUNNER Pro 150VP offers flexible paper-handling to manage the diverse applications that are common to production environments. A six-way, 8,000-sheet paper supply comes with the device as standard. The optional third Paper Supply Module can be added, boosting total online capacity to an astounding 12,000 sheets. All three paper supplies offer variable paper size capabilities and can handle paper weights from 16 lb. Bond to 150 lb. Index (60 - 266gsm). The top drawer of each paper supply can support in-track paper sizes from 7" to 9" and cross-track sizes from 8.27" to 14.33". The middle and bottom drawers can support an even broader range of custom paper sizes, with in-track parameters of 7" to 18.5" and cross-track parameters of 8.27" to 14.33". All drawers are fully adjustable within the minimum and maximum dimensions they support.

While some slowdown in machine speed is common when printing to odd-size paper, the variable pitch feature of the imageRUNNER Pro 150VP decreases this loss in productivity. Variable frames on the image loop minimize delays in paper movement, so your job gets done faster.

The generous paper supply of the imageRUNNER Pro 150VP and the large number of throughput choices it offers allow you to create documents containing multiple paper types, colors, and exceptions. You can create finished documents with custom covers, inserts, tabs, and more, without the frustrating limitations that are common to many other printers. With so many drawers to choose from, you can leave special papers in the device to use when needed, instead of constantly having to switch out papers. The wide range of paper sizes supported also reduces the need for off-line trimming.

If preprinted stocks need to be incorporated into your finished documents, an optional three-drawer, 4,000-sheet Inserter is also available to handle the collation of preprinted materials on a variety of substrates. Color photos, illustrations, transparencies, charts, graphs, and other media are added to the job stream post-process, protecting sensitive pages from exposure to potentially damaging fuser heat.

If glossy and coated papers are common to your printing operations, the imageRUNNER Pro 150VP can handle those too. Optional Enhanced Feed Mode boosts paper-feeding by allowing an external compressed air source to flow through the paper drawers. You can print to heavy, coated, and off-set printed materials without worry or concern.

For extremely paper-intensive operations, the Canon imageRUNNER Pro 150VP is also compatible with third-party roll feed devices. You can leverage all the unique advantages of the imageRUNNER Pro 150VP with the convenience and cost-savings of feeding paper from a roll. Enjoy hours of reliable, non-stop printing at 150 pages per minute.

The imageRUNNER Pro 150VP supports a wide range of paper sizes, finishes, and weights:

- True 6"x9" book production
- Preprinted 18.5" check stock (12-up)
- Large-format output of over 18"
- Heavier stocks for postcard mailings
- Enhanced Feed Mode for heavy and glossy media

WORKFLOW THAT WORKS

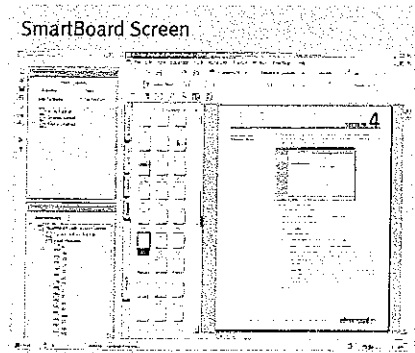
The imageRUNNER Pro 150VP offers several optional tools to help you build a system customized for your specific application needs.

SmartBoard™ Suite

Alone, the imageRUNNER Pro 150VP is a productive, high-speed printer. But combine it with SmartBoard™ Suite software or the EFI MicroPress® and an optional Canon scanner, and you have a powerful solution from pre-flight to production.

SmartBoard Suite, a PDF-based workflow tool for the Canon imageRUNNER Pro 150VP, takes document assembly, editing, and proofing capabilities to the next level. With SmartBoard, you can easily combine documents from various applications and input sources, and create brand-new output. Operations such as reordering pages, rotating pages, imposition, annotation, tab creation, and black-and-white and color image editing are done quickly and easily.

The EFI MicroPress® for Canon combines powerful document “make-ready” capabilities with advanced job management and workflow tools through a single, front-end solution. The *MicroPress* delivers powerful digital prepress and workflow management utilities to mission-critical print environments, with productivity features that optimize throughput and minimize downtime to ensure on-time job completion.



Key productivity features include:

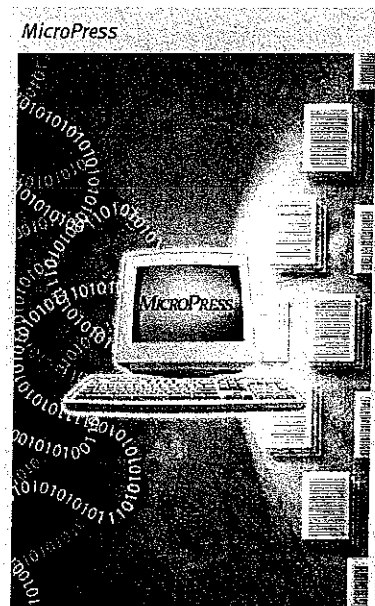
TrueCluster – Manage jobs across several devices for printing multiple jobs simultaneously or large jobs quickly, while accommodating variations in job size and workflow.

TrueRecover – Automatic Page and job-level error detection and recovery across one or multiple devices.

PowerRIP – Up to four *MicroPress* RIPs can be added to a single server for simultaneous processing of multiple files, increasing throughput and productivity, and eliminating potential bottlenecks.

TrueEdit – A suite of make-ready tools for preparing post-RIP documents for printing. Allows users to make job- and page-level changes without having to re-RIP the entire job, dramatically reducing the processing time. Automates manual processes such as hand-collating, tab inserting, document renumbering, and booklet creating.

In addition, users have access to the Digital StoreFront™ (DSF) software solution that simplifies the process of job submission, proofing, ticketing, and more.



Still have a significant amount of hard copy that needs to be converted into electronic form? Canon offers two high-performance network scanners to accomplish this task.

The **imageSCANNER 65** Production Scanner is built to keep pace with the busiest print-on-demand environments. This 65-page-per-minute scanner has a document feeder capable of handling up to 100 sheets from 5.5" x 8.5" to 11" x 17" and in weights from 16 lb Bond to 110 lb. Index. A continuous-run feature allows you to add more pages to the feeder while scanning, boosting productivity even more. The imageSCANNER 65 scans at true 600-dpi image quality and produces precisely registered images at full-rated speed.

The **DR-7080C** is a mid-production scanner that can scan black-and-white and color documents. This versatile scanner operates at a maximum speed of 70 pages per minute and offers a host of advanced features such as one-pass scanning and reliable feeding of mixed-batch documents. Built-in MultiStream™ technology allows users to generate a variety of different images, simultaneously, from a single scan—color, black and white, grayscale, binary, or R/G/B color dropout.

Configure your imageRUNNER Pro 150VP with a Canon scanner and one of the Canon document mastering tools to simplify your most complex, scan-store-reassemble production jobs

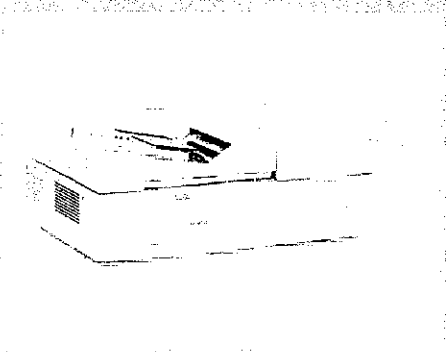


Software integration

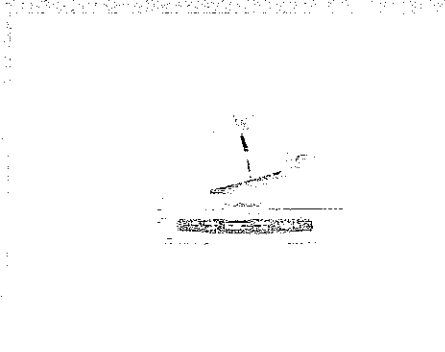
Current Xerox® DigiPath users can integrate the Canon imageRUNNER Pro 150VP with their existing solution using CoXist software. CoXist runs on the controller of the imageRUNNER Pro 150VP, so there is no need to interrupt your existing DigiPath setup. With CoXist, you can send jobs from DigiPath directly to the imageRUNNER Pro 150VP system.

With CoXist Pro software, you can save the converted DigiPath files to the imageRUNNER Pro 150VP controller as a PostScript file. This functionality allows you to gradually convert DigiPath files into PostScript files that contain imageRUNNER Pro 150VP job ticket information mapped from the original DigiPath file. You can also have Xerox RDO files converted into PostScript format through Canon's RDO Conversion Service.

imageSCANNER 65



DR-7080C



THIRD-PARTY VALUE-ADDED SOLUTIONS

The imageRUNNER Pro 150VP is designed to work easily with third-party software and hardware solutions in order to give you the highest degree of flexibility when configuring your equipment. In order to make the integration as seamless as possible, Canon has partnered with many third-party providers, including:

Objectif Lune

The Objectif Lune PlanetPress® Suite enables variable data documents and forms printed on legacy and proprietary impact printers to transition to the networked, speedy, and feature-rich Canon imageRUNNER Pro 150VP.

Solimar Systems

Solimar's Print/Director software makes it possible for the imageRUNNER Pro 150VP to accept jobs intended for Xerox or IBM® equipment, without requiring the user to rewrite applications in order to output PostScript, PCL, or other data stream formats.

Formstream Software Associates (FSA)

M.I.S. Print, IPDS Print, and DTPrint software by RSA automatically convert line printer, Xerox LCDS (DJDE, Metacode, and XES/UDK), and AFP/IPDS datastreams into a format that can be printed on the imageRUNNER Pro 150VP.

Formscan

The Formscan verification solution, named "Vision 2000," provides closed-loop verification of the MICR printing process, including MICR-quality scoring and positioning, job balancing, sequence and base stock verification, and audit trail creation.

Roll System

Roll System's DocuSheeter LS increases the productivity of your imageRUNNER Pro 150VP with in-line roll-feeding capabilities.

Standard Sheeter

The SF4-H Sheet Feeder can be configured with the imageRUNNER Pro 150VP to enable hours of continuous-run operation.

ASMARC

The ASMARC Finisher Conveyor, built by Automecha, provides continuous unload and access to completed sets from the imageRUNNER Pro 150VP Finisher. No interface kit is required.

Challenge Machinery

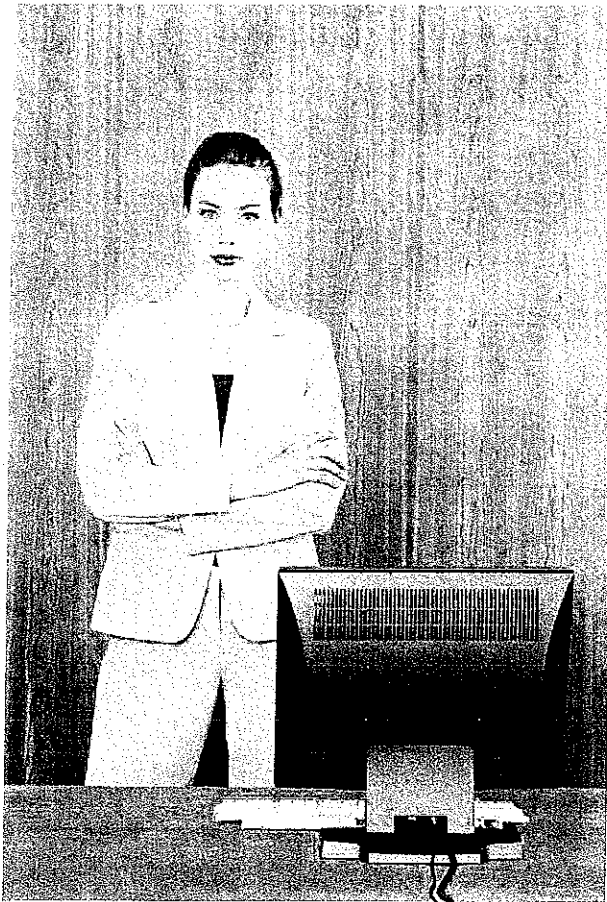
The CMT330 Three-knife Trimmer, manufactured by Challenge Machinery, is a three-sided trimmer designed for use with the imageRUNNER Pro 150VP device's Perfect Binder option. No interface kit is required.

Thomson Binding Systems

The Coverbind/Bindomatic 301 provides an in-line thermal binding solution that requires no trimming, venting, or special power requirements. It's a great alternative to tape binding and perfect binding. An Accessory Interface Box is required for integration.

CUSTOM SOLUTIONS

Canon understands that, occasionally, a customer may have a highly specialized workflow requirement that is not met through our standard product offerings. With this in mind, Canon created a "customization" program for the imageRUNNER Pro 150VP. Customer requests for hardware and software solutions outside of our current product portfolio are evaluated and may be made available as a "custom" solution at an additional cost. Please check with your Authorized Canon Dealer for more information.

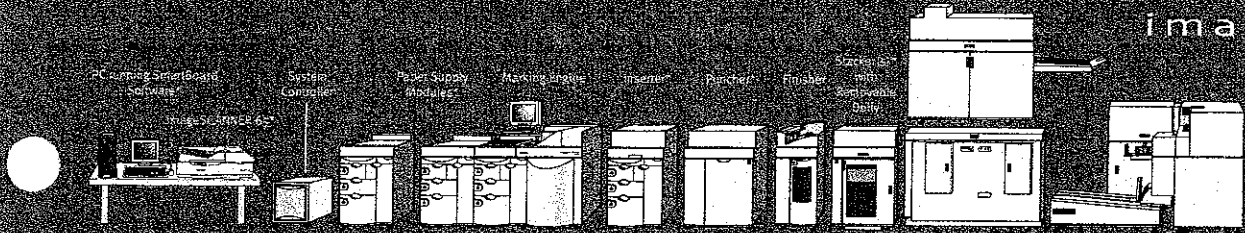


COUNT ON CANON

As the leading brand of network-connected imaging devices in the industry, Canon imageRUNNER products are known for open architectures, modular design, and reliable performance. The imageRUNNER Pro 150VP illustrates, once again, the Canon commitment to deliver high-quality, innovative solutions to market.

Additionally, every Canon imageRUNNER Pro 150VP is backed by a network of experienced dealer organizations and expert sales, service, and technical support groups. You see, at Canon we all work together to ensure that you receive the level of customer service you not only expect, but also deserve.

imageRUNNER Pro 150VP



Optional Accessories:
 *NOT: cannot connect the imageRUNNER Pro 150VP with both the Booklet-maker and BPRF. Use Perfect Binder or the Booklet-maker.

imageRUNNER Pro 150VP Specifications

Configuration/Platen:	Digital, Multifunction imaging System
Imaging System:	Electrophotographic Process
Developing System:	SPD, Two Component Dry
Acceptable Originals:	Sheets, Transparencies, Tabs, Covers
Max. Originals Size:	14.33" x 18.5"
Min. Originals Size:	7" x 8.27"
Max. Print Size:	14" x 18.25"
Engine Resolution:	600 x 600 dpi
Paper-feeding:	6-drawer Modular
Paper Capacity	
Standard:	8,000 Sheets
Drawer 1 (4 (Top)):	1,000 Sheets (20 lb.)
Drawer 2 (5):	1,000 Sheets (20 lb.)
Drawer 3, 6:	2,000 Sheets (20 lb.)
Maximum:	12,000 Sheets*
Acceptable Paper Weight:	16 lb. Bond to 150 lb. Index (All Cassettes)**
Duplexing:	Trayless Duplexing (Except Tabs)
Warm-up Time:	6 Minutes
Maximum Print Speed:	150 ppm (LTR/LGL) 75 ppm (LDG)
Dimensions (H x W x D):	64" x 155" x 47" (163cm x 394cm x 119cm)
Weight:	3,240 lb. (1,469kg)
Power Requirements	
(V/Hz/Amps):	208/60/30
Noise Level (Printing):	<70dB
Duty Cycle:	3 to 5 Million Impressions per Month**
Developer:	1.69kg—Estimated Yield 1,200,000 Prints (LTR)
Toner:	2.5kg—Estimated Yield: 80,000 Prints (LTR 6% Coverage)

Accessories

Finisher	
Number of Trays:	2 Trays
Tray Capacity	
Top Tray:	500 Sheets (All Sizes) Non-staple Mode
Staple Tray:	3,000 Sheets (Straight or Offset/ 85 Sets with Staple)
Paper Size	
Top Tray:	7" x 8.27" to 14.33" x 18.5"
Staple Tray:	7" x 8.27" to 9" x 14"
Staple Position:	Multiposition Stapling
Stitching Capacity:	None, Top, Bottom Both
Document Delivery:	Face-down
Staples:	50,000
Power Supply:	Directly from Main Unit
Weight:	650 lb. (294.7kg)
Dimensions (H x W x D):	61.5" x 22.5" x 34" (156cm x 58cm x 86cm)

ImageSCANNER 65 Production Scanner* (Optional)	
Optical Resolution:	600 x 600 dpi
Speed (Simplex/ Duplex LTR/A4):	65/36 ppm
Paper Feeder Capacity:	100 Sheets (LTR, 20 lb.)
Paper Size Ranges:	5.5" x 8.5" to 11" x 17"
Paper Weight Ranges:	16 lb. Bond to 110 lb. Index
Weight:	200 lb. (90kg)
Dimensions (H x W x D):	15" x 39" x 27" (38.1cm x 99cm x 66.6cm)

Paper Supply Module (Optional)

Number of Trays:	3 Cassettes
Tray Capacity	
Drawer 7 (Top):	1,000 Sheets (20 lb.)
Drawer 8:	1,000 Sheets (20 lb.)
Drawer 9:	2,000 Sheets (20 lb.)
Paper Size:	16 lb. Bond to 150 lb. Index*
Weight:	545 lb. (247.4kg)
Dimensions (H x W x D):	45" x 35.5" x 31.5" (114cm x 90cm x 85cm)

Post-process Inserter (Optional)

Number of Trays:	3 Cassettes
Tray Capacity	
Drawer 1 (Top):	1,000 Sheets (7" x 8.27" to 9" x 14")*
Drawer 2:	1,000 Sheets (7" x 8.27" to 14.33" x 18.5")*
Drawer 3:	2,000 Sheets (7" x 8.27" to 14.33" x 18.5")*
Paper Weight:	16 lb. Bond to 150 lb. Index*
Weight:	610 lb. (276.7kg)
Dimensions (H x W x D):	49.5" x 31" x 33.5" (125.7cm x 78.7cm x 85.1cm)

Puncher (Optional)

Power Requirements:	120 VAC 60Hz, 2.5A 100 VAC 50/60Hz 2.5A
Power Consumption:	320 VA
Dimensions (H x W x D):	49.6" x 40.2" x 31.9" (126cm x 102cm x 81cm)
Weight:	595 lb. (270kg)

Punch Tools

- Loose-leaf/Office Hole-punch Tool (2-/3-/4-hole)
- Plastic Comb Punch Tool (Rectangular)
- Wire Comb Punch Tool 2-1 Pitch (Round)
- Wire Comb Punch Tool 3-1 Pitch (Round)
- Wire Comb Punch Tool 2-1 Pitch (Rectangular)
- Wire Comb Punch Tool 3-1 Pitch (Square)

Punch Tool Durability: 12 - 15 Million Actuations

Stacker (Optional)†

Number of Trays:	1 Tray
Tray Capacity:	5,000 Sheets (Straight or Offset Non-staple)

Paper Size:	7" x 8.27" to 14.33" x 18.5"
Rotator Unit:	Rotates 8-1/2" x 11" Portrait Sheets 90 Degrees
Document Delivery:	Face-down
Power Supply:	115V
Weight:	450 lb. (203.7kg)
Dimensions (H x W x D):	49.5" x 33" x 31.6" (125.7cm x 84.8cm x 78.7cm)

Booklet-maker (Optional)

Tray Capacity:	Conveyor Belt Output
Paper Size:	8" x 10" to 14" x 18"
Stitching Capacity:	2 to 22 Sheets
Stitching Position	
Single-position Stapling:	2 Center Staple Positions
Saddle-stitched Specifications	
Folding:	V folding
Folding Capacity:	1 to 22 Sheets (20 lb. Bond)
Trimming:	Edge Trim Folded Booklets (Adjustable Trim Width)
Staple Wire Spool:	40,000 (100-sheet Stitches)
Power Supply:	115V
Weight:	970 lb. (439.8kg)
Dimensions (H x W x D):	58" x 100" x 24" (147.2cm x 254cm x 58.4cm)

BPRF (Optional)

Power Requirements:	120 VAC, 60Hz
Power Consumption:	920 Watts
Dimensions (H x W x D):	51" x 64" x 31" (129cm x 162cm x 78cm)
Weight:	562 lb. (255kg)

Perfect Binder (Optional)

Book Thickness:	15 Sheets to 1.5" (40mm) about 350 Sheets @ 20 lb. Bond
Book Size (In-line Binding):	8.5" x 11"
Book Size (Off-line Binding):	2.36" x 4" to 12" x 14" (60mm x 100mm to 305mm x 356mm)
Weight (with Input Unit, Delivery, and Bypass):	1,676 lb. (760kg)
Dimensions with Bypass (H x W x D):	45" x 84" x 51.1" (1.2m x 2.6m x 1.8m)

Roll Feed Interface Kit (Optional)

Supports Roll Systems DocuSheeter L5
Supports Standard Hunkeler SF4-H Sheet Feeder

Multi-stacker Interface Kit (Optional)

Supports up to three Stackers on one device
One kit is required for each additional Stacker

Optional Features

- MICR printing*
- Enhanced Feed Mode*
- Digital Print Quality Adjustments†
- PCL interpreter*
- Extended Paper Size Range*

* Optional license upgrade is required.

** Depends on customer job stream and number of shifts

† With optional Paper Supply Module(s).

‡ Stacker is required for Booklet-maker and Perfect Binder.

• Other optional scanners may be available. Please check with your local Authorized Canon Dealer.

* Caliper must fall within 3.5mil to 10mil (0.09mm to 0.25mm)

© 2004 Canon U.S.A., Inc. All rights reserved.

Adobe, PostScript, and the PostScript logo are registered trademarks of Adobe Systems Incorporated in the United States and/or other countries. Sun is a service mark of Sun Microsystems, Inc. in the United States and other countries. MicroPress is a registered trademark of Electronics for Imaging, Inc. in the U.S. Patent and Trademark Office and/or certain other foreign jurisdictions. Digital StoreFront is a trademark of Electronics for Imaging, Inc. PlanetPress is a registered trademark of Objectif Lune. UNIX is a registered trademark of the Open Group in the U.S. and other countries. XEROX is a trademark of Xerox Corporation in the U.S. and/or other countries. IBM is a registered trademark of IBM in the United States. MultiStream is a trademark of Captiva Software Corporation. Canon, IMAGERUNNER, and Canon Know How are registered trademarks, and SmartBoard and the GENUINE Logo are trademarks of Canon Inc. in the United States and may also be registered trademarks or trademarks in other countries. IMAGEANYWARE is a service mark of Canon U.S.A., Inc. All other terms and product names may be trademarks or registered trademarks of their respective owners and are hereby acknowledged.

Specifications subject to change without notice

0045W654

0804-IRPRO150VP-20M



PRINTED ON RECYCLED PAPER IN THE U.S.A.

Canon KNOW HOW®

1-800-OK-CANON

www.usa.canon.com

Canon U.S.A., Inc.

One Canon Plaza

Lake Success, NY 11042



Adobe PostScript®



ANYWARE®