



The following documentation is an electronically-submitted vendor response to an advertised solicitation from the *West Virginia Purchasing Bulletin* within the Vendor Self-Service portal at wvOASIS.gov. As part of the State of West Virginia's procurement process, and to maintain the transparency of the bid-opening process, this documentation submitted online is publicly posted by the West Virginia Purchasing Division at WVPurchasing.gov with any other vendor responses to this solicitation submitted to the Purchasing Division in hard copy format.

Header 1

List View

- General Information**
- Contact
- Default Values
- Discount
- Document Information
- Clarification Request

Procurement Folder: 1743847

Procurement Type: Central Master Agreement

Vendor ID: VS0000018987

Legal Name: ASCENT CONSULTING AND ENGINEERING LLC

Alias/DBA:

Total Bid: \$89,562.00

Response Date: 09/16/2025

Response Time: 8:40

Responded By User ID: Ascent2018

First Name: Jeffrey

Last Name: Knepper

Email: jknepper@ascentwv.com

Phone: 304-933-3463

SO Doc Code: CRFQ

SO Dept: 0313

SO Doc ID: DEP2600000006

Published Date: 9/8/25

Close Date: 9/16/25

Close Time: 13:30

Status: Closed

Solicitation Description: LCAP GROUNDWATER MONITORING

Total of Header Attachments: 1

Total of All Attachments: 1



Department of Administration
 Purchasing Division
 2019 Washington Street East
 Post Office Box 50130
 Charleston, WV 25305-0130

**State of West Virginia
 Solicitation Response**

Proc Folder: 1743847
Solicitation Description: LCAP GROUNDWATER MONITORING
Proc Type: Central Master Agreement

Solicitation Closes	Solicitation Response	Version
2025-09-16 13:30	SR 0313 ESR09162500000001910	1

VENDOR
 VS0000018987
 ASCENT CONSULTING AND ENGINEERING LLC

Solicitation Number: CRFQ 0313 DEP2600000006
Total Bid: 89562 **Response Date:** 2025-09-16 **Response Time:** 08:40:36
Comments:

FOR INFORMATION CONTACT THE BUYER
 Joseph (Josh) E Hager III
 (304) 558-2306
 joseph.e.hageriii@wv.gov

Vendor Signature X **FEIN#** **DATE**

All offers subject to all terms and conditions contained in this solicitation

Line	Comm Ln Desc	Qty	Unit Issue	Unit Price	Ln Total Or Contract Amount
1	Field Services - East Region Landfill	97.00000	EA	125.000000	12125.00

Comm Code	Manufacturer	Specification	Model #
71122800			

Commodity Line Comments: The new plan is to try and conduct low flow sampling for wells less than 200 ft at each landfill location. This should provide better quality data. Anything over 200 ft makes low flow very difficult with the sampling pump. Those wells will be hand-bailed.

Extended Description:

Twice per year, all labor, equipment, materials, transportation, and incidentals to gauge, purge, sample, preserve and transport samples to laboratory from 44 monitoring wells located at the East Region Landfills (See Attachments A, B and Exhibit 1). Quantity includes 10% duplicates.

Line	Comm Ln Desc	Qty	Unit Issue	Unit Price	Ln Total Or Contract Amount
2	Field Services - North Region Landfill	77.00000	EA	130.000000	10010.00

Comm Code	Manufacturer	Specification	Model #
71122800			

Commodity Line Comments: The new plan is to try and conduct low flow sampling for wells less than 200 ft at each landfill location. This should provide better quality data. Anything over 200 ft makes low flow very difficult with the sampling pump. Those wells will be hand-bailed.

Extended Description:

Twice per year, all labor, equipment, materials, transportation, and incidentals to gauge, purge, sample, preserve and transport to laboratory for analysis from 35 monitoring wells located at the North Region Landfills (See Attachments A, B and Exhibit 1). Quantity includes 10% duplicates.

Line	Comm Ln Desc	Qty	Unit Issue	Unit Price	Ln Total Or Contract Amount
3	Field Services - South Region Landfill	80.00000	EA	160.000000	12800.00

Comm Code	Manufacturer	Specification	Model #
71122800			

Commodity Line Comments: The new plan is to try and conduct low flow sampling for wells less than 200 ft at each landfill location. This should provide better quality data. Anything over 200 ft makes low flow very difficult with the sampling pump. Those wells will be hand-bailed.

Extended Description:

Twice per year, all labor, equipment, materials, transportation, and incidentals to gauge, purge, sample, preserve and transport samples to laboratory for analysis from 36 monitoring wells located at the South Region Landfills (See Attachments A, B and Exhibit 1). Quantity includes 10% duplicates.

Line	Comm Ln Desc	Qty	Unit Issue	Unit Price	Ln Total Or Contract Amount
4	Field Services - West Region Landfill	69.00000	EA	183.000000	12627.00

Comm Code	Manufacturer	Specification	Model #
71122800			

Commodity Line Comments: The new plan is to try and conduct low flow sampling for wells less than 200 ft at each landfill location. This should provide better quality data. Anything over 200 ft makes low flow very difficult with the sampling pump. Those wells will be hand-bailed.

Extended Description:

Twice per year, all labor, equipment, materials, transportation, and incidentals to gauge, purge, sample, preserve and transport samples to laboratory for analysis from 31 monitoring wells located at the West Region Landfills (See Attachments A, B and Exhibit 1). Quantity includes 10% duplicates.

Line	Comm Ln Desc	Qty	Unit Issue	Unit Price	Ln Total Or Contract Amount
5	Statistical Analysis Setup	30.00000	EA	0.000000	0.00

Comm Code	Manufacturer	Specification	Model #
71122800			

Commodity Line Comments: The cost for this is \$0. The labor, equipment, materials, transportation are included in the rate. Ascent is already set up with the database so there is no additional cost.

Extended Description:

Once per year, all labor, equipment, materials, transportation and incidentals to collect, compile and construct data base for statistical evaluations of information obtained in field services and laboratory analysis.

Line	Comm Ln Desc	Qty	Unit Issue	Unit Price	Ln Total Or Contract Amount
6	Statistical Analysis and Reporting	60.00000	EA	700.000000	42000.00

Comm Code	Manufacturer	Specification	Model #
71122800			

Commodity Line Comments: Our reports will continue to include potentiometric maps, flow direction, event data, field data, statistical analysis and upkeep of the historical data.

Extended Description:

Twice per year, all labor (including clerical), printing, binding, copying, shipping, etc., and incidentals to evaluate data and report findings to WVDEP.



**West Virginia Department of
Environmental Protection
LCAP Groundwater Monitoring
WV DEP2600000006**

**Ascent Consulting & Engineering, LLC.
September 9, 2025**

www.ascentwv.com
(304) 933-3463
1700 Anmoore Road | Bridgeport, WV 26330

September 9, 2025

Department of Administration
State Purchasing Division
2019 Washington Street, E
Charleston, WV 25305

submitted via WVOasis Portal

RE: LCAP Groundwater Monitoring, DEP260000006

Ascent Consulting and Engineering, LLC. (Ascent) is pleased to submit this Expression of Interest (EOI) in response to the request for proposals (RFP) issued by the West Virginia State Purchasing Division, West Virginia Department of Environmental Protection, for the Landfill Closure Assistance Program (LCAP) Groundwater Monitoring Bid.

Our team brings extensive experience and a proven track record in managing the LCAP Groundwater Monitoring contract. Over the past three years, we have served as the primary environmental consultant responsible for executing and overseeing this critical contract. This experience has provided us with in-depth knowledge of each location, the specific regulatory requirements, and the expectations necessary to ensure successful project outcomes for the WVDEP.

Throughout this period, our team has developed strong relationships with the WVDEP Inspectors and Project Managers. The team has demonstrated a consistent ability to deliver high-quality results within the designated timelines and budgets. Our technical expertise, coupled with a comprehensive understanding of groundwater monitoring protocols, data interpretation, and reporting requirements, positions us well to continue providing exceptional service and support for the LCAP program.

We are confident in our capabilities and remain committed to partnering with the West Virginia Department of Environmental Protection to meet and exceed project goals. Ascent is fully prepared to continue our involvement and bring dedicated technical expertise, innovative solutions, and a proactive approach to this ongoing program.

Thank you for considering our proposal. We look forward to the opportunity to contribute to the success of the Landfill Closure Assistance Program and to support WVDEP in its environmental stewardship efforts.

Sincerely,

Michael R. Nestor, PE
Principal

OUR STORY

Ascent Consulting & Engineering, LLC.



Ascent Consulting & Engineering, LLC., (Ascent) was created in 2018 and is operated by two West Virginia entrepreneurs, Michael Nestor, PE and Zachary Assaro. The two set out with a vision to provide engineering solutions focused on land development and civil engineering projects. With a small dedicated staff of three the team focused on providing personalized, high-quality engineering solutions for land development and civil projects in West Virginia.

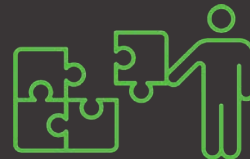
Since its inception, Ascent has experienced remarkable growth, expanding to a team of over 50 skilled professionals. This expansion reflects our commitment to excellence and our ability to handle a diverse and extensive portfolio of projects. Today, we serve clients across every region of West Virginia, the surrounding states, and even beyond, establishing a strong reputation for reliable and innovative engineering services.

Our comprehensive suite of offerings includes civil engineering design and planning, stormwater management, environmental compliance and permitting, survey services, materials testing, and construction inspection. To ensure the highest standards of quality and precision, Ascent boasts a fully equipped materials testing laboratory that is AASHTO accredited, enabling us to support our clients with reliable, in-house testing services.

At Ascent, our mission is to deliver engineered solutions that are not only effective and sustainable but also tailored to meet the unique needs of each client. We pride ourselves on building lasting relationships through integrity, expertise, and a passion for advancing land development and civil infrastructure in our communities.

ENGINEERING ELEVATED

STARTED IN //	2018
STAFF NUMBER //	50
LICENSED STAFF //	5
PROJECTS //	3,200
DEPARTMENTS //	5



ASCENT PRIDES ITSELF ON PUTTING THE PROJECT PIECES TOGETHER FOR OUR CLIENTS. PARTNERING WITH INDUSTRY PROFESSIONAL TO BRING YOUR PROJECT TO LIFE.

Our MISSION



Providing Practical and Creative Design

Not only will we provide creative solutions to your problem, we take a practical approach to our design that will take your vision to the next level!



Communication Holds The Keys

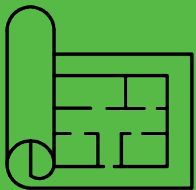
As a consultant responsible for multi-million dollar projects, communication with owners, regulatory agencies and sub-consultants throughout the entire life cycle is vital for the success the project.



Strive for Lasting Relationships

We strive to make every relationship and connection we have last. From clients and government agencies to the contractors and teaming partners we complete projects with, we want to make a lasting impression!

SERVICES TO FIT NEEDS



WE DESIGN A BETTER FUTURE

At Ascent we are working everyday to transform our clients challenges into local opportunities. Developing projects from start to successful completion while creating a lasting relationship is our purpose. As West Virginia based engineering and environmental consulting firm, playing a small part in the development or job creation for the future makes an impact. Over the last six years, we have grown to serve all market segments such as Land Development, Industrial, Energy,

Municipal and more. Due to our expanded clients needs, Ascent has been able to diversify their services to offer our clients the full package of services to complete every step of the project. From surveying, conceptual design, permitting to construction management and inspection, Ascent will be your partner through each step.



TECHNICAL SERVICES

ENVIRONMENTAL

Ascent prides itself on the diversity and expertise within the environmental services we provide. The challenges land development projects exhibit play to our strengths. Water quality analyses, permitting, site assessments, environmental resources and hydrogeology require unique perspectives to problem solving. Ascent boasts personnel with over 25 years' experience solving environmental issues as they relate to land development. Ascent has a talented team of wetland scientists to tackle natural resources, NPDES, Army Corps of Engineers and other local, state, and federal permitting.

NEPA (National Environmental Policy Act)

At Ascent we strive to provide a unique quality of studies and investigations to compliment the requirements of the NEPA process. Like other NEPA documents there are stringent guidelines and summaries for the preparation and submittal of a specific NEPA document. Team Ascent works within the framework of those guidelines and requirements to present the information and studies in a structured, high-quality document.

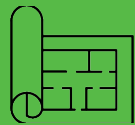
Environmental Services

- NPDES Permitting
- Phase 1 & 2 Site Assessments
- Stream Wetland Delineations
- Groundwater Sampling & Analysis
- USACE / Nationwide Permits
- Monitoring Well Installations
- County Floodplain Coordination
- Remediation & Feasibility Studies
- Hazardous & Solid Waste Management
- Brownfield Redevelopment
- Water Management Planning
- NPDES Permitting
- Consent Orders & Compliance Schedules
- Hydrological Investigations
- Tank Inspections
- Risk Assessments & Characterizations
- Underground Injection Control Wells



SERVICE OVERVIEW

And we can do more!



Civil Engineering

Our experienced and licensed staff can take your vision to the finish line with detailed cost estimates, digital concepts and final design.



Environmental

From NPDES Permitting to the detailed process of Brownfield Reclamation projects, our team of Environmental Staff is experienced in all facets of environmental compliance.



Survey

Knowledge of the type of survey required for your project is the first step in every project. The right survey data sets the stage for a successful project and the Ascent Survey team - excels!



Materials Test

Ascent offers a full range of materials testing services in our AASHTO Accredited Laboratory located right here in our Bridgeport, WV Office.



Project Inspection

From E&S to large construction inspection, the Ascent Field Service staff has unmatched experience in project inspection

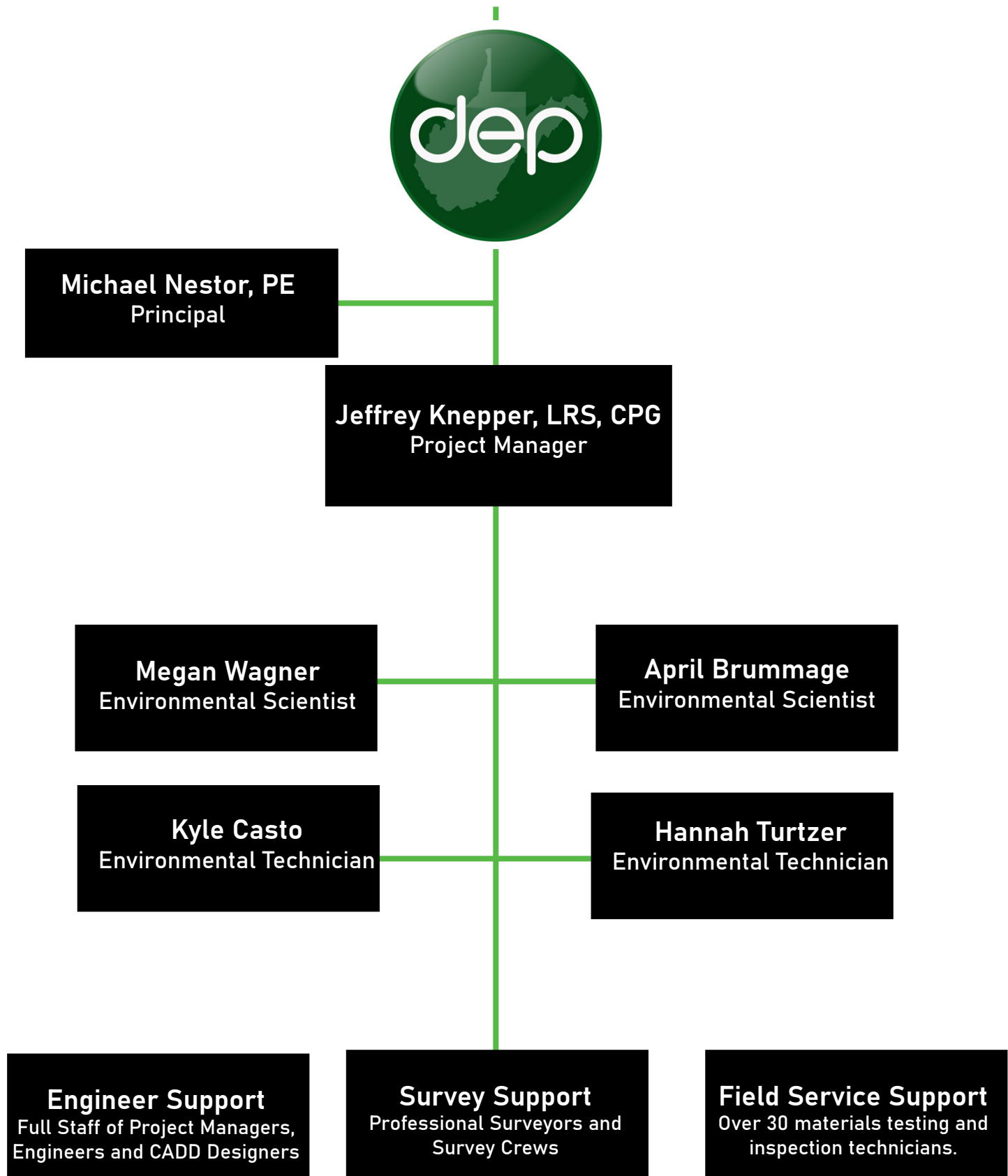


Construction Services

Working throughout the Mid-Atlantic Region, our construction service staff is ready to provide inspection, testing, quality control and more for your project.

ASCENT DELIVERS OUR CLIENTS WITH ALL THE SERVICES NEED FROM INFANCY THROUGH CONSTRUCTION. WE ARE A PARTNER IN EVERY STEP!

Organizational Chart





Registrations:

PE - West Virginia
PE - Virginia
PE - Ohio
PE - Maryland
PE - Pennsylvania

Education:

BS, Civil Engineering and
Technology - Fairmont State
University

Associations:

Past President - American
Society of Highway Engineers

American Society of Civil
Engineers

Michael R. Nestor, PE

Principal

Profile

Michael Nestor is the founder of Ascent Consulting & Engineering. Mr. Nestor is a Professional Engineer registered in West Virginia, Virginia, Ohio, Pennsylvania and Maryland. With over 20 years of experience, Michael has the expertise to guide clients through the life-cycle of their project from beginning funding stages, permitting, to design and construction. His passion for civil engineering lies in land development and storm-water management projects, completing over 50 large developments, master plans and designs for private development clients, economic development agencies and government entities. Michael's attention to detail ensures projects include cost effective and practical designs, as well as seamless bidding and efficient construction of projects.

Project Experience

- **Weirton Frontier Crossing**- Weirton, WV - Serving as the Principal for this 1,200-acre brownfield development, Michael is providing QA/QC, assistance with grant funding and project coordination, as well as overseeing the design of the project.
- **Cherry Grove Estates** - Bridgeport, WV - As the Project Manager for this new development, Mike is responsible for overseeing all aspects of this 32 home and 19 townhome development.
- **The Vale Subdivision** - Bridgeport, WV - As Project Manager for this 22 lot subdivision, Mike was responsible for the overall design of the project and coordinating the Ascent staff to complete all necessary design elements. With creative planning, the team was able to create a cost effective development for the owner maintaining natural setting within the City, with lots ranging from one acre to more than ten acres.
- **Kaufman Riverfront Mix-Use Development** - Fairmont, WV - Mr. Nestor served as the Project Manager for this 42-acre river front property development that included 90 single family lots, 36 patio homes, 85 town homes, community park, dock and commercial development space. This project was designed as a planned development, allowing for flexibility in construction as the market needs change.

Jeffrey Knepper, PG, LRS

Project Manager



Profile

Jeff Knepper is the Environmental Division Manager at Ascent. Mr. Knepper has over 25 years' experience working on complex environmental and regulatory projects specializing in permitting, compliance, remediation, water quality and carbon capture. He is adept at developing practical and innovative solutions to challenging environmental issues faced by various industries. Mr. Knepper is a Certified Professional Geologist and a West Virginia Licensed Remediation Specialist. Mr. Knepper is also an experienced Aboveground Storage Tank Inspector with over 1,000 completed inspections in various states.

Project Experience

- **State of WV OER - Statewide, WV** - Project Manager for statewide site reuse and brownfield development planning project. Mr. Knepper is responsible for developing and coordinating with stakeholders on feasibility of sites, cost and needs for development.
- **WV DEP LCAP Groundwater Monitoring, Statewide, WV** - Project Manager for the WVDEP LCAP project over the last three years. Overseeing project reports, reviewing data, coordinating cost and budget, making sure all project requirements are met.
- **Newell Polymers, LLC, New Cumberland, WV** - Project Manager for State and Federal Permitting. WV State Air permit an NPDES compliance. Developed and submitted federally regulated documents to the EPA. Conducted AST inspections and certifications. Also conducted a Phase II Environmental Site Assessment and remediation for contamination that was approved by the WVDEP.
- **ADO Industries, Moundsville, WV - Wastewater Treatment Plant** - Project Manager for the permit determination to treat production and wastewater. Developed the Groundwater Protection and Stormwater Pollution Prevention Plan and submitted to the WVDEP. Also developed and submitted WV State Air permits, environmental assessments and NPDES modifications.

Registrations:

LRS - West Virginia
CPG- Virginia
AST - STI- SP001
AST - Pennsylvania

Education:

BS, Geology - West Virginia
University

Association:

American Institute of
Professional Geologist

American Chemical Society

Geological Society of America

Steel Tank Institute



Registrations:

Asbestos Inspector - WV

Education:

BS, Environmental Studies,
Fisheries & Wildlife - California
University of Pennsylvania

Certifications:

Asbestos Building Inspector
Annual Refresher

10 Hour OSHA - Construction &
Health

40-Hour Army Corps of
Engineers - Wetland Delineation

Richard Chinn Environmental
Training

Morphological Soils
Investigations
Certification, PADEP

Ohio Rapid Assessment Method
for Wetlands v. 5.0 Training

PADEP One-Day Technical

Megan Wagner

Environmental Scientist

Profile

Megan Wagner is an Environmental Senior Scientist for Ascent. Ms. Wagner has approximately 8 years of experience in stream and wetland delineations, habitat assessments, regulatory permitting, NPDES construction and industrial permitting, mitigation monitoring, ESA Phase I reporting, stormwater sampling, NEPA reporting, and GIS mapping and analysis. She is a certified Asbestos Inspector with a license in West Virginia. She has been involved with numerous projects located within WV, PA, and OH. The range of projects include, well pads, access roads, gathering lines, industrial, residential, commercial, modifications, slip repairs, and water and gas pipeline projects.

Project Experience

- **Black Diamond Reality, Harrison County, WV-** Senior Scientist lead for site closure, NPDES industrial permit stormwater sampling organization for new site location. Provided SWPPP and GPP for NPDES permitting. Coordinated communication with WVDEP .
- **Mountain V, Upshur County, WV -** Senior Scientist lead for providing an annual mitigation monitoring report for the Farnsworth Stockert Impoundment. Monitoring focuses on the establishment of riparian vegetation along two unnamed tributaries of Queens Fork. Developed corrective actions plan with suggestions on how to increase survivability rate of planted species. This is an on-going project and is in its second year of monitoring. Coordinated meetings and communication with the EPA. .
- **Monroe Port Authority, Monroe, OH -** Senior Scientist lead for providing all field work and reporting required for NEPA submittal for four proposed cell towers. Included stream and wetland delineations, RTE reviews, and ESA Phase I. Coordinated communications and meetings with multiple agencies involving cultural reviews, tribal coordination, public notices, FCC Antenna Structure Registrations, FAA Registrations, Aeronautical studies, and section 106 reviews.

April Brummage

Environmental Scientist

Profile

April Brummage is an Environmental Scientist for Ascent. Mrs. Brummage has approximately 8 years of experience in stream and wetland delineations, habitat assessments, regulatory permitting, NPDES construction and industrial permitting, mitigation monitoring, ESA Phase I reporting, stormwater sampling, construction inspections, erosion and sedimentation Inspections, and GIS mapping and analysis. She has been involved with numerous projects located within WV, PA, and OH. The range of projects include, well pads, access roads, road upgrades, gathering lines, ASTs, impoundments, industrial, residential, commercial, modifications, slip repairs, and water and gas pipeline projects.

Project Experience

- **Private Client - Lost Creek Replacement, Harrison County, WV-** Ms. Brummages was responsible for stormwater and soil sampling, wetland and stream delineation, habitat assessment, GIS mapping and analysis, and all the reporting documents for the project.
- **Racket Storage - Wetland Delineation - West Virginia-** Ms. Brummage was responsible for stormwater and soil sampling, wetland and stream delineation, habitat assessment, GIS mapping and analysis, and all the reporting documents for the project.
- **Summerhill Phase I ESA, Westmoreland County, PA-** As environmental scientist, she assisted the senior scientist on the project to complete a Phase I ESA, coordinated with management on field findings and completed all documentation and reports for the client.
- **Various Environmental Compliance Project, West Virginia-** She was responsible for completing initial database research, communicating to government and compliance agencies of project notices, such as: DNR, USFWS, municipal agencies and floodplain directors. She provides the client with supplement data and keeps client communication for statuses and updates. She is also responsible for reporting, documentation and applications for DEP notices.



Education:

BS, Environmental Studies,
Fisheries & Wildlife - California
University of Pennsylvania

Certifications:

Gailey Environmental 36-Hour
Wetland Delineation Training

First Aid/CPR Certified

Asbestos Building Inspector -
West Virginia



Education:

BS, Environmental Studies,
Wildlife and Fisheries Resources
- West Virginia University

Certifications:

Safeland USA - 8hr

Antero 2023 Safety Training

Steel Tank Institute, SP001 AST
Inspector

Gailey Environmental - 36 Hour,
Wetland Delineation Certified

AMPP/NACE CIP, Level 1 - Base
Coatings Inspector

Society of Wetland Scientists
Wetland Professional in
Training(WPIT)

OSHA 7300 Confined Space
Awareness

Confined Space General Industry
8-Hour

PTA Asbestos Building Inspector
Proactive Safety Certified Lead
Inspector

First Aid/CPR Certified

Kyle Casto

Environmental Technician

Profile

Kyle Casto joined the Ascent team in 2023 upon graduation from college. Mr. Casto began in the Field Services Division learning the industry and completing important inspection and reporting for numerous projects. From there, Kyle was able to transition from the Field Services Division to the Environmental Division as an Environmental Technician. Kyle is responsible for E&S inspections, soil sampling, water testing, wetland and stream delineations, as well as all the reporting that goes along with these activities. Kyle is beginning to assist in Environmental Site Assessments and Habitat Assessments.

Project Experience

- **Private Client - Lost Creek Replacement, Harrison County, WV-** As environmental technician, he was responsible for stormwater and soil sampling, wetland and stream delineation, habitat assessment, GIS mapping and analysis, and all the reporting documents for the project.
- **Mountain V - Stream Mitigation - West Virginia -** As an environmental technician, he was responsible for wetland and stream delineation, GIS mapping and analysis of the site, Phase 1 ESA reporting, dendrology surveys for mitigation reports, stormwater and soil sampling, along with other data entry and construction reporting.
- **Racket Storage - Wetland Delineation - West Virginia-** As environmental technician, he was responsible for stormwater and soil sampling, wetland and stream delineation, habitat assessment, GIS mapping and analysis, and all the reporting documents for the project.
- **West Virginia DEP, LCAP, State of West Virginia-** Mr. Casto serves as environmental technician and is responsible for water and soil sampling, wetland and stream delineation and analysis, and all the reporting documents for the project.

Hannah Turtzer

Environmental Technician



Profile

April Brummage is an Environmental Scientist for Ascent. Mrs. Brummage has approximately 8 years of experience in stream and wetland delineations, habitat assessments, regulatory permitting, NPDES construction and industrial permitting, mitigation monitoring, ESA Phase I reporting, stormwater sampling, construction inspections, erosion and sedimentation Inspections, and GIS mapping and analysis. She has been involved with numerous projects located within WV, PA, and OH. The range of projects include, well pads, access roads, road upgrades, gathering lines, ASTs, impoundments, industrial, residential, commercial, modifications, slip repairs, and water and gas pipeline projects.

Project Experience

- **West Virginia DEP, LCAP, State of West Virginia-** Ms. Turzter is responsible for water and soil sampling, wetland and stream delineation and analysis, and all the reporting documents for the project.
- **Various Environmental Compliance Project, West Virginia-** She was responsible for completing initial database research, communicating to government and compliance agencies of project notices, such as: DNR, USFWS, municipal agencies and floodplain directors. She provides the client with supplement data and keeps client communication for statuses and updates. She is also responsible for reporting, documentation and applications for DEP notices.

Education:

BS, Environmental Studies,
Glenville State University

DESIGNATED CONTACT: Vendor appoints the individual identified in this Section as the Contract Administrator and the initial point of contact for matters relating to this Contract.

(Printed Name and Title) _____

(Address) _____

(Phone Number) / (Fax Number) _____

(email address) _____

CERTIFICATION AND SIGNATURE: By signing below, or submitting documentation through wvOASIS, I certify that: I have reviewed this Solicitation/Contract in its entirety; that I understand the requirements, terms and conditions, and other information contained herein; that this bid, offer or proposal constitutes an offer to the State that cannot be unilaterally withdrawn; that the product or service proposed meets the mandatory requirements contained in the Solicitation/Contract for that product or service, unless otherwise stated herein; that the Vendor accepts the terms and conditions contained in the Solicitation, unless otherwise stated herein; that I am submitting this bid, offer or proposal for review and consideration; that this bid or offer was made without prior understanding, agreement, or connection with any entity submitting a bid or offer for the same material, supplies, equipment or services; that this bid or offer is in all respects fair and without collusion or fraud; that this Contract is accepted or entered into without any prior understanding, agreement, or connection to any other entity that could be considered a violation of law; that I am authorized by the Vendor to execute and submit this bid, offer, or proposal, or any documents related thereto on Vendor's behalf; that I am authorized to bind the vendor in a contractual relationship; and that to the best of my knowledge, the vendor has properly registered with any State agency that may require registration.

By signing below, I further certify that I understand this Contract is subject to the provisions of West Virginia Code § 5A-3-62, which automatically voids certain contract clauses that violate State law; and that pursuant to W. Va. Code 5A-3-63, the entity entering into this contract is prohibited from engaging in a boycott against Israel.

(Company)



(Signature of Authorized Representative)

(Printed Name and Title of Authorized Representative) (Date)

(Phone Number) (Fax Number)

(Email Address)

ADDENDUM ACKNOWLEDGEMENT FORM
SOLICITATION NO.:

Instructions: Please acknowledge receipt of all addenda issued with this solicitation by completing this addendum acknowledgment form. Check the box next to each addendum received and sign below. Failure to acknowledge addenda may result in bid disqualification.

Acknowledgment: I hereby acknowledge receipt of the following addenda and have made the necessary revisions to my proposal, plans and/or specification, etc.

Addendum Numbers Received:

(Check the box next to each addendum received)

- | | |
|---|--|
| <input type="checkbox"/> Addendum No. 1 | <input type="checkbox"/> Addendum No. 6 |
| <input type="checkbox"/> Addendum No. 2 | <input type="checkbox"/> Addendum No. 7 |
| <input type="checkbox"/> Addendum No. 3 | <input type="checkbox"/> Addendum No. 8 |
| <input type="checkbox"/> Addendum No. 4 | <input type="checkbox"/> Addendum No. 9 |
| <input type="checkbox"/> Addendum No. 5 | <input type="checkbox"/> Addendum No. 10 |

I understand that failure to confirm the receipt of addenda may be cause for rejection of this bid. I further understand that any verbal representation made or assumed to be made during any oral discussion held between Vendor's representatives and any state personnel is not binding. Only the information issued in writing and added to the specifications by an official addendum is binding.

Company



Authorized Signature

Date

NOTE: This addendum acknowledgment should be submitted with the bid to expedite document processing.

Search: Details

Legal Name:	ASCENT CONSULTING AND ENGINEERING, LLC
WV Company COA:	COA Number: C05756
	COA Status: Active
	COA Issue Date: 01/22/2018
	COA Expiration Date: 12/31/2025
Primary Address of Record:	1700 ANMOORE ROAD BRIDGEPORT, WV 26330
Engineer In Responsible Charge:	MICHAEL R. NESTOR
	PE License Number: 018467
	PE License Status: Active
	PE License Expiration: 12/31/2024

This data was retrieved on 1/9/2024.

Request for Taxpayer Identification Number and Certification

Go to www.irs.gov/FormW9 for instructions and the latest information.

**Give form to the
requester. Do not
send to the IRS.**

Before you begin. For guidance related to the purpose of Form W-9, see *Purpose of Form*, below.

Print or type. See Specific Instructions on page 3.	<p>1 Name of entity/individual. An entry is required. (For a sole proprietor or disregarded entity, enter the owner's name on line 1, and enter the business/disregarded entity's name on line 2.)</p> <p>Ascent Consulting and Engineering LLC</p>	
	<p>2 Business name/disregarded entity name, if different from above.</p>	
	<p>3a Check the appropriate box for federal tax classification of the entity/individual whose name is entered on line 1. Check only one of the following seven boxes.</p> <p> <input type="checkbox"/> Individual/sole proprietor <input type="checkbox"/> C corporation <input type="checkbox"/> S corporation <input type="checkbox"/> Partnership <input type="checkbox"/> Trust/estate <input checked="" type="checkbox"/> LLC. Enter the tax classification (C = C corporation, S = S corporation, P = Partnership) Note: Check the "LLC" box above and, in the entry space, enter the appropriate code (C, S, or P) for the tax classification of the LLC, unless it is a disregarded entity. A disregarded entity should instead check the appropriate box for the tax classification of its owner. <input type="checkbox"/> Other (see instructions) _____ </p>	<p>4 Exemptions (codes apply only to certain entities, not individuals; see instructions on page 3):</p> <p>Exempt payee code (if any) _____</p> <p>Exemption from Foreign Account Tax Compliance Act (FATCA) reporting code (if any) _____</p> <p style="text-align: right;"><i>(Applies to accounts maintained outside the United States.)</i></p>
	<p>3b If on line 3a you checked "Partnership" or "Trust/estate," or checked "LLC" and entered "P" as its tax classification, and you are providing this form to a partnership, trust, or estate in which you have an ownership interest, check this box if you have any foreign partners, owners, or beneficiaries. See instructions <input type="checkbox"/></p>	
	<p>5 Address (number, street, and apt. or suite no.). See instructions.</p> <p>1700 Anmoore Road</p>	<p>Requester's name and address (optional)</p>
	<p>6 City, state, and ZIP code</p> <p>Bridgeport, WV 26330</p>	
	<p>7 List account number(s) here (optional)</p>	

Part I Taxpayer Identification Number (TIN)

Enter your TIN in the appropriate box. The TIN provided must match the name given on line 1 to avoid backup withholding. For individuals, this is generally your social security number (SSN). However, for a resident alien, sole proprietor, or disregarded entity, see the instructions for Part I, later. For other entities, it is your employer identification number (EIN). If you do not have a number, see *How to get a TIN*, later.

Note: If the account is in more than one name, see the instructions for line 1. See also *What Name and Number To Give the Requester* for guidelines on whose number to enter.

Social security number									
or									
Employer identification number									
8	2	-	4	0	6	9	2	4	0

Part II Certification

Under penalties of perjury, I certify that:

1. The number shown on this form is my correct taxpayer identification number (or I am waiting for a number to be issued to me); and
2. I am not subject to backup withholding because (a) I am exempt from backup withholding, or (b) I have not been notified by the Internal Revenue Service (IRS) that I am subject to backup withholding as a result of a failure to report all interest or dividends, or (c) the IRS has notified me that I am no longer subject to backup withholding; and
3. I am a U.S. citizen or other U.S. person (defined below); and
4. The FATCA code(s) entered on this form (if any) indicating that I am exempt from FATCA reporting is correct.

Certification instructions. You must cross out item 2 above if you have been notified by the IRS that you are currently subject to backup withholding because you have failed to report all interest and dividends on your tax return. For real estate transactions, item 2 does not apply. For mortgage interest paid, acquisition or abandonment of secured property, cancellation of debt, contributions to an individual retirement arrangement (IRA), and, generally, payments other than interest and dividends, you are not required to sign the certification, but you must provide your correct TIN. See the instructions for Part II, later.

Sign Here	Signature of U.S. person	Date 1/7/25
------------------	--------------------------	--------------------

General Instructions

Section references are to the Internal Revenue Code unless otherwise noted.

Future developments. For the latest information about developments related to Form W-9 and its instructions, such as legislation enacted after they were published, go to www.irs.gov/FormW9.

What's New

Line 3a has been modified to clarify how a disregarded entity completes this line. An LLC that is a disregarded entity should check the appropriate box for the tax classification of its owner. Otherwise, it should check the "LLC" box and enter its appropriate tax classification.

New line 3b has been added to this form. A flow-through entity is required to complete this line to indicate that it has direct or indirect foreign partners, owners, or beneficiaries when it provides the Form W-9 to another flow-through entity in which it has an ownership interest. This change is intended to provide a flow-through entity with information regarding the status of its indirect foreign partners, owners, or beneficiaries, so that it can satisfy any applicable reporting requirements. For example, a partnership that has any indirect foreign partners may be required to complete Schedules K-2 and K-3. See the Partnership Instructions for Schedules K-2 and K-3 (Form 1065).

Purpose of Form

An individual or entity (Form W-9 requester) who is required to file an information return with the IRS is giving you this form because they



1700 Anmoore Road | Bridgeport, WV 26330
www.ascentwv.com