



The following documentation is an electronically-submitted vendor response to an advertised solicitation from the *West Virginia Purchasing Bulletin* within the Vendor Self-Service portal at ***wvOASIS.gov***. As part of the State of West Virginia's procurement process, and to maintain the transparency of the bid-opening process, this documentation submitted online is publicly posted by the West Virginia Purchasing Division at ***WVPurchasing.gov*** with any other vendor responses to this solicitation submitted to the Purchasing Division in hard copy format.

Header @ 1

[List View](#)

General Information [Contact](#) [Default Values](#) [Discount](#) [Document Information](#) [Clarification Request](#)

Procurement Folder: 1552053

Procurement Type: Central Purchase Order

Vendor ID: 000000160928

Legal Name: CIVIL & ENVIRONMENTAL CONSULTANTS INC

Alias/DBA:

Total Bid: \$0.00

Response Date: 11/20/2024

Response Time: 9:51

Responded By User ID: kevinhanks

First Name: Kevin

Last Name: Hanks

Email: khanks@cecinc.com

Phone: 2676885593

SO Doc Code: CEOI

SO Dept: 0310

SO Doc ID: DNR2500000001

Published Date: 11/1/24

Close Date: 11/20/24

Close Time: 13:30

Status: Closed

Solicitation Description: A&E - Greenbrier River Public Access Sites

Total of Header Attachments: 1

Total of All Attachments: 1



Department of Administration
Purchasing Division
2019 Washington Street East
Post Office Box 50130
Charleston, WV 25305-0130

State of West Virginia
Solicitation Response

Proc Folder: 1552053
Solicitation Description: A&E - Greenbrier River Public Access Sites
Proc Type: Central Purchase Order

Solicitation Closes	Solicitation Response	Version
2024-11-20 13:30	SR 0310 ESR11202400000003585	1

VENDOR
000000160928
CIVIL & ENVIRONMENTAL CONSULTANTS INC

Solicitation Number: CEOI 0310 DNR2500000001
Total Bid: 0
Response Date: 2024-11-20
Response Time: 09:51:43
Comments:

FOR INFORMATION CONTACT THE BUYER
Joseph E Hager III
(304) 558-2306
joseph.e.hageriii@wv.gov

Vendor		
Signature X	FEIN#	DATE

All offers subject to all terms and conditions contained in this solicitation

Line	Comm Ln Desc	Qty	Unit Issue	Unit Price	Ln Total Or Contract Amount
1	Civil engineering				0.00

Comm Code	Manufacturer	Specification	Model #
81101500			

Commodity Line Comments:

Extended Description:

Design and Contract Administration of Greenbrier River Boat Launch Facilities New Construction.



Department of Administration
Purchasing Division
2019 Washington Street East
Post Office Box 50130
Charleston, WV 25305-0130

State of West Virginia
Centralized Expression of Interest
Architect/Engr

Proc Folder: 1552053			Reason for Modification:
Doc Description: A&E - Greenbrier River Public Access Sites			
Proc Type: Central Purchase Order			
Date Issued	Solicitation Closes	Solicitation No	Version
2024-11-01	2024-11-20 13:30	CEOI 0310 DNR2500000001	1

BID RECEIVING LOCATION

BID CLERK
DEPARTMENT OF ADMINISTRATION
PURCHASING DIVISION
2019 WASHINGTON ST E
CHARLESTON WV 25305
US

VENDOR

Vendor Customer Code: 000000160928
Vendor Name : Civil & Environmental Consultants, Inc.
Address : 3574 Teays Valley Road
Street :
City : Hurricane
State : WV **Country :** USA **Zip :** 25526
Principal Contact : David Gilmore, PLA, MBA
Vendor Contact Phone: 304-933-3119 **Extension:**

FOR INFORMATION CONTACT THE BUYER

Joseph E Hager III
(304) 558-2306
joseph.e.hageriii@wv.gov

Vendor
Signature X

FEIN# 25-1599565

DATE 11-19-2024

All offers subject to all terms and conditions contained in this solicitation



Civil & Environmental Consultants, Inc.



WEST VIRGINIA DIVISION OF NATURAL RESOURCES

**A&E - GREENBRIER RIVER PUBLIC ACCESS SITES
CEOI 0310 DNR2500000001**

CEC | CHARLESTON

Project 347-270

November 20, 2024



November 20, 2024

WV Division of Natural Resources
324 4th Avenue
South Charleston, WV 25305
Attn: Joseph Hager III

Dear Mr. Hager:

Subject: Statement of Qualifications for A&E – Greenbrier River Public Access Sites
CEC Project 347-270

Civil & Environmental Consultants, Inc. (CEC) is pleased to submit our qualifications proposal in response to the recently advertised Request for Qualifications (RFQ) issued by the West Virginia Division of Natural Resources. Our team is passionate about contributing to the planning and execution stages of the Greenbrier River Public Access Sites.

CEC's growth into the outdoor recreation and tourism market throughout West Virginia has offered us the chance to collaborate with numerous state and federal agencies, non-profit organizations, and private sector clients alike. We bring a diversified portfolio to this project and take pride in our strong track record of riverfront development projects.

We are enthusiastic about joining your team to enhance recreation in Charleston, WV. David Gilmore, PLA, MBA, a seasoned professional with 36 years of dedicated experience, will assume the role of Project Principal. David brings a diverse range of projects with an emphasis on recreational planning. His expertise spans all aspects of land development, landscape architecture, planning, and urban design. Prior to joining CEC, David played a pivotal role in the Haddad Riverfront Park project and the Charleston Convention Center/Elk River Boat Dock & Kayak Launch.

CEC understands the dynamics of outdoor tourism, considering factors such as community engagement and economic development. We look forward to working with the WVDNR as a cohesive team to create an inviting riverfront space that benefits both residents and visitors.

Shannon Shank will serve as the primary contact for the consultant in his role as Project Manager. Shannon's contact information is: Phone: 405-463-7655 Email: sshank@cecinc.com.

Thank you for this opportunity to submit our qualifications, and we look forward to working with you.

Sincerely,

CIVIL & ENVIRONMENTAL CONSULTANTS, INC.

Shannon Shank
Project Manager

David Gilmore, PLA, MBA
Principal



CONTENTS

1.0	Firm Overview	1
2.0	CEC Capacity and Capabilities	12
3.0	Approach to Achieving the Project Goals/Objectives	13
3.1	Objective 1: Review Site Conditions and Evaluate Feasibility.....	13
3.2	Objective 2: Provide Necessary Design Services in Compliance with WVDNR Needs and Legal Requirements	13
3.3	Objective 3: Provide Construction Contract Administration Services	14
4.0	Project Team.....	15
5.0	Project Experience	24
6.0	References	32
7.0	Required Forms and Documents.....	33

1.0 Firm Overview

In 1989, four engineers and scientists came together with a singular vision: to be a people-first company, one that promotes a culture where clients and employees enjoy working together, and that is responsive to client needs with integrated services and high-quality work for projects both complex and routine. More than 35 years later, Civil & Environmental Consultants, Inc. (CEC) has 1,500+ team members in offices nationwide. Headquartered in Pittsburgh, Pennsylvania, we are consistently ranked on Engineering News-Record's annual lists of the Top Design Firms and Top Environmental Firms in the nation.

A culture of accountability. We own it. At CEC, every member of our team has a personal stake in ensuring the success of our clients. Because their success is our success. As employee-owners of the firm, we are all personally accountable for building lasting relationships and delivering outstanding results. Because we don't just work at CEC. We own it.

Being easy to work with. We own it. At other firms, you may find one person you work well with. Here, our clients tell us they work well with all of us. It's because all of us are invested in your success. We're accessible, responsive, and operate with integrity.

Putting people first. We own it. At CEC, people come first. Always. Whether that's our clients, our employees, or our community. It's why we listen more and work harder to understand the unique needs of our clients. And it's why we prioritize the career development of every individual on our team. People are why we do this, and why we love what we do.

Teamwork. We own it. We are at our best when we work together. That means bringing together a diverse team of talented, passionate, multidisciplinary experts to work closely alongside clients to craft comprehensive solutions to complex problems. We believe that by working together, no problem is insurmountable.

Safety excellence. We own it. We believe all accidents are preventable and are committed to creating an accident- and incident-free workplace for employees and subcontractors through training, safe workplace practices, and processes for assessing project hazards. CEC strives for safety excellence throughout our entire organization and holds all individuals accountable for the safe performance of their work.



ENR's Top 500
Design Firms

#97

ENR's Top 200
Environmental Firms

#107

CEC is an expanding, multi-disciplined company that is home to:

- Civil Engineers
- Geotechnical Engineers
- Transportation Engineers
- Structural Engineers
- Environmental Scientists
- Environmental Engineers
- Chemical Engineers
- Geologists
- Hydrogeologists
- Hydrologists
- Ecologists
- Biologists
- Wetland Scientists
- Threatened & Endangered Species Experts
- Agronomists/Soil Scientists
- Emissions Testing Professionals
- Meteorologists
- Chemists
- Archaeologists
- Construction Managers and Inspectors
- Environmental Technicians
- Treatment Plant Operators
- Land Surveyors
- Landscape Architects
- GIS Analysts and Programmers

CEC West Virginia

CEC's Bridgeport and Charleston offices are comprised of senior leaders, engineers, project managers and support staff all with significant private and public infrastructure planning, design and engineering experience. The offices are adequately staffed with a variety of professionals to ensure appropriate staff is assigned to any task.

The Bridgeport and Charleston offices enjoy a positive relationship with local, regional and state regulatory officials. These relationships are critical to navigating the permitting process through the increasingly difficult regulatory environment. CEC understands the length of time required for permitting tasks and can assist the client in developing accurate project schedules. CEC also has significant experience working with local contractors on similar development, roadway, and utility projects throughout West Virginia. This knowledge of

local construction techniques and a thorough understanding of the design and operation/maintenance of public infrastructure provide a technical advantage to CEC.

CEC's team provides a balance of public and private sector experience that allows us to offer an exceptional perspective to our consulting services. Our team has proven experience in both private and public sector projects throughout West Virginia, meeting intensive schedules for projects and locally funded projects while maintaining quality work. We understand the balance and collaboration required between private site development projects and the public development process which will be critical in the success of this development.



Civil Engineering & Site Development

CEC provides civil engineering and site development consulting services to assist with the development of cost-effective designs to meet regulatory and client requirements.

CEC has extensive experience preparing regulatory permits and managing the design, approval, and on-site construction processes associated with the site development of multi-building campuses, commercial, industrial and retail developments, institutional and educational facilities, and residential developments. CEC has developed a reputation for developing high-quality, sustainable and “buildable” design solutions within construction budgets.

PREDEVELOPMENT SITE INVESTIGATIONS

CEC provides predevelopment investigation services to evaluate sites for specific uses, addressing site layout, zoning adherence for parking and setbacks, site access, wetlands and other environmental considerations, geotechnical concerns, grading/earthwork, and utility availability and capacity.

CIVIL DESIGN AND PERMITTING

CEC has extensive design experience and a proven track record of successfully obtaining local, state, and federal erosion and sedimentation control (E&S) permits and/or regulatory approvals and has a working knowledge of the various state and federal E&S and National Pollutant Discharge Elimination System (NPDES) regulations and requirements. Civil design and permitting services include:

- Site Grading/Earthwork Analysis
- Erosion and Sedimentation Control/NPDES Permitting
- Stormwater Management/Water Quality Design
- Utility Design/Coordination
- Roadway Design and DOT Permitting
- Sustainability Planning and Design

LANDSCAPE ARCHITECTURE AND PLANNING

CEC provides a diverse range of landscape architecture design services for site and land development, master development planning, feasibility studies, landscape design, green infrastructure and irrigation. CEC is recognized for leadership in applying sustainable design, green infrastructure and low-impact design solutions. CEC's services include the preparation of graphic renderings, photo manipulation services and 3-D modeling visualizations.

GEOTECHNICAL ENGINEERING

CEC provides geotechnical engineering services to determine foundation and retaining wall design parameters, develop site grading requirements, design pavements, and investigate slope stability, mine subsidence, landslides, and foundation failures.

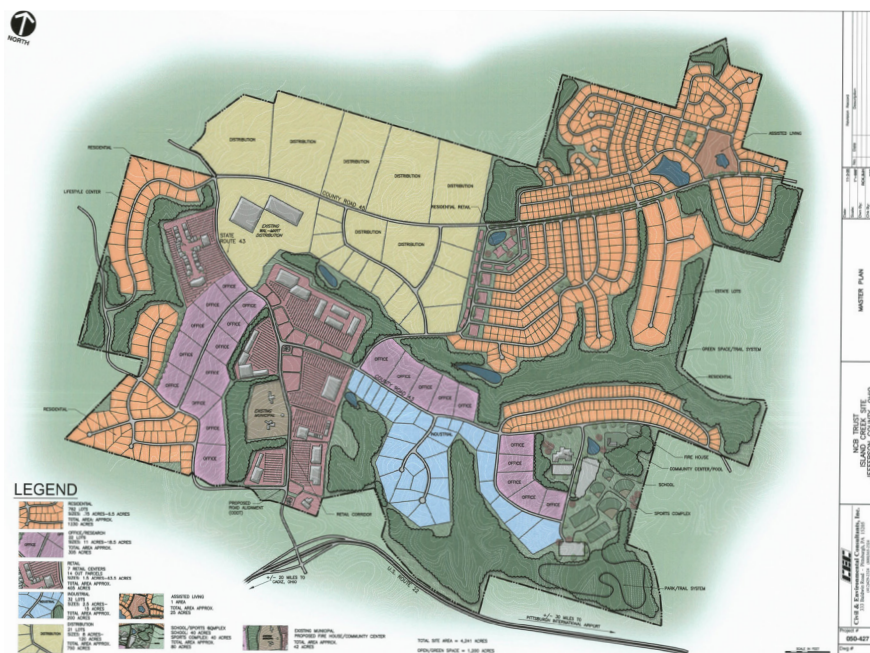
CONSTRUCTION SERVICES

CEC routinely monitors the construction of earthmoving operations, the installation of erosion control measures and building construction. CEC provides certified technicians for testing of soils, concrete, masonry, steel and fireproofing. Technicians are certified to meet International Building Code (IBC) Special Inspection requirements and provide construction quality assurance and construction management services for a wide range of civil, geotechnical, environmental and waste management projects.



CEC engineers, construction managers and field superintendents perform infrastructure assessments, develop recommendations to correct concerns, and deliver cost-effective repair, rehabilitation and maintenance services for site infrastructure, including stormwater facilities, site utilities, landscaping, parking lots and pavement.

CEC inspects, monitors, maintains, restores, repairs and improves property infrastructure. The need for such services can arise from damage, age, poor maintenance of systems, and/or changing regulatory requirements.



Landscape Architecture & Planning

CEC provides a diverse range of landscape architecture design services for site and land development, master development planning, feasibility studies, stormwater management, landscape design, green infrastructure and irrigation.

CEC provides landscape architecture services to architects; developers; institutional, commercial and businesses owners; and public agencies, and is recognized for leadership in applying sustainable design practices to projects seeking LEED® certification.

SITE AND LAND DEVELOPMENT

CEC landscape architects prepare feasibility studies, site concept plans and master development plans for commercial office and retail sites, industrial and residential developments and institutional/academic campuses. Preliminary site planning services address utility and roadway infrastructure, vehicular accessibility and circulation, in some cases rail access, municipal zoning and land development requirements, and state and federal regulations, as well as site planning flexibility.

CEC takes into consideration floodplain issues, topographic constraints, existing and proposed infrastructure, stormwater management, preservation of natural site features such as existing vegetation and water courses, and review of wetlands and other environmental considerations. CEC can include the design of ponds and other water features such as bioswales, rain gardens, and creative stormwater treatment measures to limit water resource impacts.

LANDSCAPE AND IRRIGATION DESIGN

CEC can prepare landscape design and planting plans that address local municipal ordinance requirements and the client's program objectives, LEED, and construction budget constraints. CEC also can prepare irrigation plans and construction documents to include commercial systems, groundwater and surface water supply irrigation systems, increased water efficiency, fountains and other water amenity features.

GRAPHIC RENDERINGS AND PHOTO MANIPULATION SERVICES

CEC prepares large-scale color renderings, photo manipulation services and 3-D modeling for presentation quality drawings and 3-D visualizations. CEC combines computer accuracy with an artistic by-hand touch to create realistic renderings and 3-D models. With technology to overlay proposed design solutions on photos of existing site conditions, CEC can communicate a photo-realistic effect of what the final design solution may look like, which is very effective for public meetings. Hand-drawn and computer-imaged renderings include: black and white and color perspectives, realistic detailed sections and elevations, 3-D models, and color presentation boards presenting both conceptual and final master plans.



Survey/Geospatial Services

With a seasoned team of registered professionals and survey staff, combined with cutting-edge technology and equipment, CEC offers a full range of surveying and geospatial services both on land and in water that meet the changing needs of clients.



LAND SURVEYING

CEC surveyors have a depth of professional experience combined with advanced technical skills to locate, analyze, and map property boundaries and existing conditions for a variety of land use and development purposes. From reviewing aged deeds to utilizing the latest survey technology, reconciling boundary and title exceptions, and preparing high-quality documents and deliverables, CEC surveyors are proven expert measurers. Licensed professionals are experienced with various agency and governmental requirements, as well as state and national survey standards. Robust professional capabilities, specialized experience, and technical competence and capacity allow CEC to provide the following surveys:

- Boundary and ALTA/NSPS Land Title
- Topographic, Utility, and As-Built
- Horizontal and Vertical Control
- Construction Surveys and Staking
- Volumetric
- Settlement and Deformation Monitoring
- Route and Right-Of-Way
- Roadway and Railway

BATHYMETRIC/HYDROGRAPHIC SURVEYS

CEC performs bathymetric/hydrographic surveys using its in-house fleet of survey vessels and depth-sounding equipment to satisfy diverse industry needs for mapping underwater environments. Our vessels are outfitted with required United States Coast Guard (USCG) safety equipment and are operated by CEC personnel with a USCG Captain's License and/or safe boat operation training, and who have been trained to work in aquatic environments.

CEC collects comprehensive bathymetric data to assist manufacturing, mining, natural gas, power, and transportation companies with projects requiring accurate water depth/ bottom surface elevation data. Capabilities and services include:

- Dual-Frequency and Side-Scan Capabilities
- Manned and Autonomous Survey Vessels
- Pre- and Post-Dredging and Demolition Surveys
- River, Harbor, and Impoundment Surveys
- Maintenance Dredging Scans
- Draft and Trench Verification
- Storage Volumes and Resident Time Calculations
- Utility Crossing Alignment Surveys
- Horizontal Directional Drilling (HDD) Scans

UNMANNED AERIAL SYSTEMS (UAS)

CEC utilizes UAS to conduct site inspections, topographic surveys, construction site monitoring, stockpile and landfill volumetric calculations, vegetation analyses, optical gas imaging, and other similar projects. UAS provide a cost-effective, low-environmental-impact solution that optimizes the quality and value of collected data.

Survey/Geospatial Services

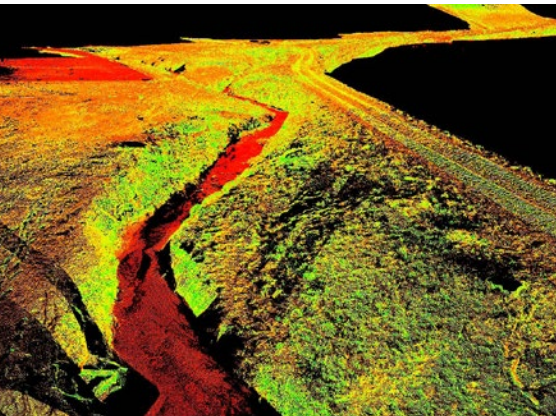


CEC obtained a Federal Aviation Administration (FAA) Section 333 Exemption and FAA Part 107 Pilot Certifications to operate robotic UAS within the national airspace system for the purpose of conducting aerial data acquisitions. The use of UAS enables CEC to conduct data acquisition for project sites in a safe manner. The use of UAS also creates significant economic efficiencies, such as reductions in the number of field personnel required and the time required for both data acquisition and review. Applications of the technology include:

- Aerial Photography and Videography
- Photogrammetric and 3D Light Detection And Ranging (LiDAR) Topography
- Optical Gas Imaging (OGI) and Pipeline Leak Detection
- Vegetative Analysis and Thermal Imagery
- Visual Façade Inspections
- Volume Determinations
- Right-Of-Way Monitoring

3D LIDAR SCANNING AND IMAGERY

CEC provides a wide range of land surveying services with a full complement of cutting-edge technology, including 3D LiDAR scanning to create spatial imaging.



With ease of portability and setup, and decreased data processing time, LiDAR scanning provides significant time savings versus traditional location methods. The use of LiDAR technology also enables increased safety by minimizing the need to send crews into dangerous spaces.

Using LiDAR, CEC can create an extremely detailed and dimensionally accurate 3D image using millions of acquired intelligent data points on a project site. Services include:

- Topographic Scanning
- Architectural LiDAR Surveys
- Mobile LiDAR Surveys
- Bridge Surveys
- Mine Surveys and Mapping
- Asset Management Surveys
- Industrial and Manufacturing Scanning
- Landslide and Deformation Surveys
- 360-Degree Imagery
- Orthorectified Imagery

Ecological Sciences

CEC provides a wide range of ecological and environmental assessment and permitting services. Our experienced professionals have successfully filed for permits with various federal and state regulatory agencies.

CEC provides extensive ecological services to the manufacturing, mining, natural gas, power, real estate, and solid waste industries, as well as to the public sector.

WETLAND AND STREAM DELINEATION AND PERMITTING

Wetlands regulations significantly impact the overall feasibility, economics, and efficiency of new land development projects. CEC has extensive experience working with regulatory agencies to address and solve wetland issues for land development, producing positive and timely results.

- Wetland and Stream Delineations
- 401/404 Permitting for Wetland and Stream Encroachments
- Jurisdictional Determination (JD) Meetings with Regulators
- Wetland and Stream Functional Assessments
- Alternatives Analysis
- Cumulative Impact Assessments
- Mitigation Design, Construction Oversight, and Success Monitoring
- Mitigation Construction Bid Documents
- Design of Wetland Treatment Systems
- NEPA Environmental Impact Statements & Assessments

TERRESTRIAL ECOLOGY AND WILDLIFE SERVICES

CEC ecologists perform habitat assessments and flora and fauna surveys for environmental planning and impact studies, endangered species presence or absence surveys along with protection and enhancement plans, and baseline and post-restoration monitoring for ecosystem restoration and enhancement projects. CEC scientists monitor invasive plants, perform agronomic evaluations to restore fertility and vegetation to highly disturbed sites, and design phytoremediation systems for treating contaminated soils.

- Rare Plant Surveys and Agency Coordination
- Rare Plant Relocation and Mitigation
- Threatened and Endangered Species Surveys
- Habitat Assessments
- Conservation and Mitigation Plans
- Agronomy and Phytoremediation Services
- Invasive Plant Inventory and Control Strategies
- Revegetation of Disturbed Landscapes
- Ecological Risk Assessment
- Green Infrastructure Design and Performance Monitoring

AQUATIC ECOLOGY SERVICES

CEC offers aquatic ecology monitoring services to help clients meet regulatory requirements pertaining to Clean Water Act Section 404 and 401 permits, functional assessments, stream and wetland mitigation, NPDES permits, cause and effect determinations, impact studies, and ecological risk assessments.



Ecological Sciences



- Fisheries Surveys
- Benthic Macroinvertebrate Surveys
- In-House Benthic Laboratory for Benthic Processing and Identification
- Aquatic Functional Assessment
- Water and Sediment Sampling
- Bathymetric and Hydrographic Surveys
- Freshwater Mussel Surveys
- Rare Aquatic and Wetland Plant Surveys

BAT-RELATED SERVICES

CEC's U.S. Fish & Wildlife Service-approved bat surveyors provide comprehensive bat-related services, conducting habitat assessments and mist-net surveys for Indiana bats, gray bats and northern long-eared bats.

- Bat Habitat Assessments
- Bat Mist-net and Harp-trap Surveys
- Mine/Cave Portal Surveys
- Radio Telemetry and Tracking
- Acoustic Detection and Analysis
- Federal and State Agency Consultation
- Indiana Bat Conservation Plans
- Habitat Mitigation
- Habitat Conservation Plans (Section 10)
- Biological Assessments (Section 7)

ECOSYSTEM RESTORATION SERVICES

Aquatic ecologists, geomorphologists, wetland scientists, botanists, agronomists, and engineers are familiar with the complex nature of ecosystems and work together to create functional, self-sustaining stream and wetland systems.

- Technical Assistance to Mitigation Bankers
- Site Selection and Evaluation
- Fluvial Geomorphic Assessments
- 3D Natural Channel Design
- Riparian and Wetland Planting Specifications
- Erosion Prevention and Sediment Control Specifications
- Geomorphic Restoration of Mined Land
- Design-Build Services
- Construction Specifications and Bid Packages
- Construction Management and Quality Assurance
- As-Built Drawings and Certification Reports

Environmental Engineering and Sciences

CEC conducts environmental assessments, site investigation/remediation, and other general compliance auditing and support services.

CEC provides environmental services for a wide range of industries and businesses, including power plants, mining facilities, waste processing facilities, oil & gas development and processing sites, industrial manufacturing sites, law firms, and real estate companies.

PHASE I & II ENVIRONMENTAL SITE ASSESSMENTS

With a focus on proposed land use and a practical evaluation of likely exposure pathways, CEC conducts environmental site assessments of properties to identify environmental liabilities and determine if past or adjacent land uses have resulted in environmental impacts. Assessments are designed to meet industry standards, such as ASTM and AAI, as well as client-specific and state-mandated standards when regulatory closure is the ultimate goal.

SITE INVESTIGATIONS

Site investigations are performed to evaluate whether impacts to environmental media are present or to further study the extent and degree of known impacts. CEC specializes in groundwater modeling; soil, waste and water sampling; human and ecological risk assessment; and regulatory negotiations.

SITE REMEDIATION AND BROWNFIELDS REDEVELOPMENT

CEC has successfully transitioned dozens of idle industrial sites through the redevelopment/re-use process. Licensed professionals complete assessments and remediation, in many cases obtaining liability protections available through state voluntary remediation programs. CEC engineers and environmental specialists work together to provide practicable solutions that often allow for reuse of a property using limited engineering and institutional controls.

SITE REMEDIATION AND GROUNDWATER REMEDIATION

CEC applies knowledge of groundwater flow, groundwater chemistry and contaminant transport to evaluate and design remedial alternatives for contamination problems. Capabilities include groundwater extraction and treatment using methods such as air stripping, steam stripping and carbon adsorption, as well as separate phase extraction of both light and dense freephase liquids. In-situ groundwater remediation experience includes chemical oxidation, natural and enhanced bioremediation, and phytoremediation. CEC is experienced with the physical manipulation of groundwater flow, including capture systems and physical barriers such as slurry walls, infiltration trenches and impermeable caps.

COMPLIANCE AUDITING AND REGULATORY COMPLIANCE/ LIABILITY RESERVE DEVELOPMENT SUPPORT SERVICES

Compliance audits are designed to help prepare and implement cost-effective solutions and improve systems for maintaining and tracking regulatory compliance. Audits often include liability assessments and reserve estimates, and regulatory compliance assessments to support due diligence and acquisitions.



Environmental Engineering and Sciences

COMPLIANCE SUPPORT – ENVIRONMENTAL HEALTH & SAFETY MANAGEMENT SYSTEMS

CEC assists with creation, implementation and ongoing support of Environmental Management Systems (EMS) and Occupational Health and Safety Management Systems (OHSMS). Services include: identifying EHS impact of activities, operations, processes, products and services; identifying and evaluating applicability of state, federal and local regulations; identifying responsibilities and resources for successful EMS or OHSMS implementation; and developing and auditing EMS/OHSMS programs.

COMPLIANCE SUPPORT – CLEAN WATER ACT (CWA)

CEC assists clients across many market sectors with various CWA issues, including: NPDES individual discharge permit acquisition and renewal applications; NPDES stormwater and general permit acquisition and renewal applications; Storm Water Pollution Prevention Plan (SWPPP) preparation; routine Discharge Monitoring Report (DMR) completion and submittal; wastewater treatment plant design and upgrades to meet permit limits; and assistance with design/implementation of Best Management Practices (BMPs).

RESOURCE CONSERVATION AND RECOVERY ACT (RCRA)

CEC assists clients in complying with RCRA obligations, including: waste characterization evaluations and support; waste management planning and evaluation of beneficial use/recycling opportunities; design of hazardous waste storage areas and containment buildings; implementation of weekly hazardous waste inspection programs; providing RCRA training for personnel involved with management of hazardous waste; preparation of facility RCRA Contingency Plans; completion of biennial hazardous waste reports; and completion of state residual waste (non-hazardous) biennial reports.

EMERGENCY PLANNING AND COMMUNITY RIGHT TO KNOW (EPCRA)

CEC assists clients in complying with annual filings of emergency and hazardous chemical inventory reports (Tier II) and Toxic Release Inventory (TRI) Reports (Form A/R). Services include: rule applicability and Tier II/Form R reporting threshold evaluations; review of safety and chemical data sheets for completeness; preparation of Tier II reports from chemical inventory information; and calculation of chemical releases and preparation of TRI Reports.



2.0 CEC Capacity and Capabilities

Project Team and Technical Experience

The project team identified to work with the the WVDNR have extensive experience performing advisory and design services throughout West Virginia. Over 130 staff in the Bridgeport and Charleston offices will support the project team identified in Section 3. CEC's management staff are familiar with West Virginia conditions and have extensive experience performing projects.

Value Engineering and Constructability

In today's economic climate, it is imperative to evaluate and minimize construction costs while maintaining quality and meeting the objectives of the project. Project costs are directly affected by constructability. Many senior professionals at CEC "cut their teeth" in the field, functioning as construction inspectors or project observers, which allows them to draw from this experience to apply construction approaches to design. CEC will work with the WVDNR to identify cost-effective alternative methods in an effort to limit the budget and schedule impacts associated with the proposed projects.

Schedule & Availability

CEC is available to begin work immediately upon authorization to proceed from the WVDNR and will work with the staff to complete the requested services. CEC anticipates having a project start up meeting within a week of project award with the necessary staff.

Attention to Quality

CEC performs our professional services under our corporate Quality Assurance Plan (QAP). This QAP was developed to verify the engineering, design, plans and other deliverables prepared by the project team and the various disciplines are supported by comprehensive studies and sound engineering judgment, in compliance with established policies, guidelines and standards, and contain appropriate design flexibility and cost saving measures. This QAP entails a comprehensive listing of CEC quality policies and standard operating procedures that are available on CEC's internal network. It is consistently reviewed and updated by a multi-office team of experienced professionals to ensure "Best Quality Control Practices" are uniformly applied. In support of this QAP, CEC is committed to the application of established design policies, guidelines, and processes developed and published by review and resource agencies. From a quality standpoint, technical personnel review the technical quality, accuracy and completeness of all designs, analyses, drawings, estimates, and report text. Peer-level personnel are responsible for the performance of an independent check of all calculations and project deliverables prior to each project milestone submission.

As part of the QAP, reviews will be performed for the appropriate element throughout the design/construction process. These reviews will be completed prior to submitting reports, plans, construction documentation, or other deliverables. These reviews will verify the adequacy of the information presented and compliance with established guidance documents. The QAP also documents procedures for work procedure and equipment use, employee and project safety, project management and records and communications. The goal and objective of the QA/QC Policy is to provide a safe and consistent delivery of quality services.

Specific quality policies and standard operation procedures can be provided if requested.

Commitment to Safety

CEC is committed to conducting its business in a manner that sustains and protects the safety and health of its employees. CEC strives for continuous improvement in the effectiveness of its safety and health programs. We affirm that:

- Working safely is a key corporate value and a condition of employment.
- All workplace hazards can be safeguarded against by using proactive measures and actions.
- Occupational safety and health is part of every employee's total job performance.
- Each CEC employee is responsible, and is held accountable for establishing safe workplace conditions to prevent injuries and occupational illnesses.
- Training employees to work safely is essential and is the responsibility of CEC Managers and Supervisors.
- Creating and maintaining a safe workplace, combined with the prevention of personal injuries and accidents, is good business.
- An effective Safety Program is part of CEC's vision and mission.

CEC's Workplace Safety Program and Manual provides general physical hazard assessments for tasks commonly performed by CEC employees. The program requires a hazard assessment and preparation of a project safety plan for all field operations. The plans are continuously updated through the use of Job Safety Assessments and on-site safety meetings for CEC personnel.

CEC is a consulting services firm employing engineers, scientists, biologists, ecologists, technicians, surveyors and office staff. The firm is part of the NAICS 5413 firms providing architectural, engineering and related services.

3.0 Approach to Achieving the Project Goals/Objectives

3.1 Objective 1: Review Site Conditions and Evaluate Feasibility

The first step in achieving Objective 1 will involve a comprehensive site assessment to evaluate current conditions and determine the feasibility of implementing the proposed plan. This process will include:

- **Site Evaluation and Data Collection:**
 - Conduct on-site visits to review existing conditions, including environmental factors, terrain, infrastructure, and accessibility.
 - Gather relevant historical data and any site-specific constraints that could impact the project. This will include reviewing prior studies, environmental reports, and any available planning documents.
- **Stakeholder Engagement and Communication:**
 - Initiate clear and transparent communication with WVDNR to understand their specific needs, goals, and any concerns.
 - Maintain open dialogue throughout the evaluation process to ensure that the project scope and objectives align with the owner's vision while respecting budget and timeline constraints.
 - Regularly update the owner on key findings, issues identified, and any recommended adjustments, facilitating an ongoing discussion to ensure that decisions are made collaboratively and effectively.
- **Feasibility Analysis:**
 - Use the data collected to assess the feasibility of the proposed design and identify any potential challenges. This will include a detailed evaluation of legal requirements, environmental considerations, and site limitations.
 - Based on the site conditions and owner feedback, develop multiple options or alternatives for consideration. These alternatives will be analyzed for their feasibility in terms of cost, time, and impact, with the goal of minimizing disruption during implementation.
- **Mitigation of Disruption:**
 - Develop strategies to minimize any disruptions to ongoing site activities and nearby operations, especially if the project takes place in a sensitive or high-traffic area.
 - Ensure that proposed solutions are practical and take into account the needs of other stakeholders, such as the surrounding community or relevant local agencies.

3.2 Objective 2: Provide Necessary Design Services in Compliance with WVDNR Needs and Legal Requirements

To meet Objective 2, the design team will ensure that all services align with the WV Division of Natural Resources (WVDNR) needs, objectives, and legal/code requirements:

- **Collaboration with WVDNR:**
 - Work closely with the WVDNR to fully understand their functional and technical requirements, integrating their input into the design process to meet both operational and regulatory standards.
 - Review and incorporate any relevant environmental protection guidelines, conservation goals, and sustainability practices outlined by the WVDNR and other governing bodies.
- **Compliance with Law, Codes, and Standards:**
 - Ensure that the design adheres to all applicable federal, state, and local laws, regulations, and codes, including those related to environmental protection, accessibility, safety, and building codes.
 - Ensure that any permitting processes required for construction are initiated early to avoid delays. Compliance will be documented at each step of the design process to maintain transparency and accountability.
- **Design within Budget:**
 - Develop cost-effective design solutions that meet WVDNR objectives without exceeding the allocated project budget.
 - Provide value engineering options where appropriate, proposing alternatives that maintain project quality while reducing costs.
 - Regularly update the WVDNR stakeholders on the design progress and budget status to prevent scope creep and ensure financial constraints are respected.
- **Documentation and Approvals:**
 - Prepare and submit all necessary design documents, including drawings, specifications, and reports, to WVDNR and other relevant stakeholders for review and approval.
 - Incorporate feedback from WVDNR and ensure that the design meets their approval before proceeding to construction.



3.3 Objective 3: Provide Construction Contract Administration Services

Objective 3 focuses on ensuring the successful construction of the project by providing competent contract administration and oversight:

- **Selection of Qualified Contractors:**

- Support the owner in the preparation of bid packages and the selection of qualified contractors who have experience and capabilities relevant to the project scope.
- Review contractor proposals to ensure compliance with the project requirements and ensure the selected contractor aligns with the project's budget and timeline constraints.

- **Construction Oversight and Quality Control:**

- Provide ongoing oversight throughout the construction phase, ensuring that work is completed according to the design specifications, schedule, and budget.
- Employ a team of qualified professionals to monitor the construction process, including project managers, inspectors, and engineers, to identify and resolve any issues promptly.

- **Issue Resolution and Change Management:**

- Proactively manage any issues that arise during construction, including addressing unforeseen site conditions, design discrepancies, or other challenges.
- Implement a formal change order process to track any modifications to the original contract, ensuring that changes are documented, reviewed, and approved by the owner and other stakeholders.

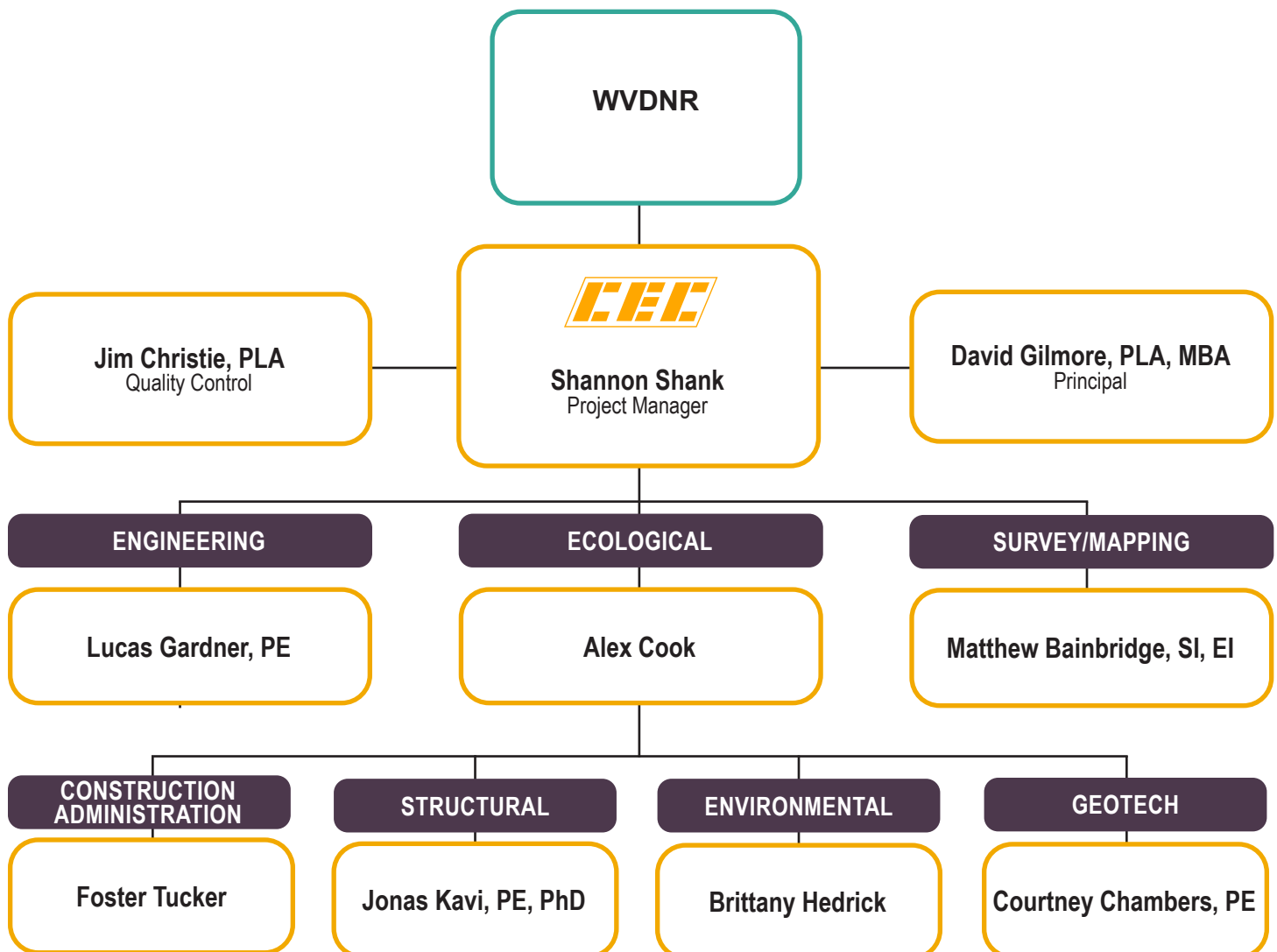
- **Ensure Functionality and Performance:**

- Conduct periodic site visits during construction to ensure that the work is progressing as planned and meets the intended design, quality, and performance standards.
- After completion, conduct thorough inspections and functional tests to verify that the facility operates as designed and is fully compliant with WVDNR requirements.
- Facilitate the owner's acceptance of the project, ensuring that all systems are functioning properly and that any final adjustments are made before final handover.

- **Project Closeout:**

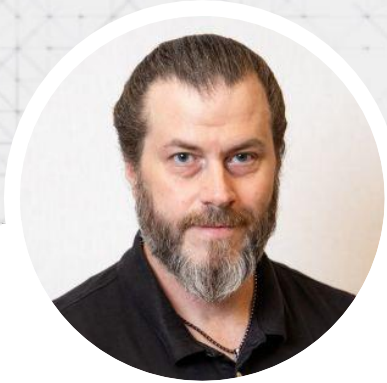
- Assist with the project closeout process, including final inspections, completion of punch lists, submission of as-built drawings, and turnover of warranties and manuals.
- Ensure that all documentation is properly filed and that the owner receives all necessary information to operate and maintain the facility.
- By closely aligning each objective with the project's requirements and maintaining strong communication throughout the process, we can deliver a project that meets the owner's needs, adheres to legal and regulatory standards, and is completed on time and within budget.

4.0 Project Team



Shannon Shank

Assistant Project Manager



19 YEARS OF EXPERIENCE

EDUCATION

B.S., Landscape Architecture, West Virginia University, 2005

A.S., Architectural/Structural Drafting, West Virginia State University, 2001

0, Geography and Geographic Information Science, West Virginia University, 2005

PROJECT EXPERIENCE

Brownfield Conceptual Master Plans, Kanawha County, Kanawha County, WV*

Role: Designer

Designed, rendered and finalized Conceptual Master Plans using Hand sketches, ArcMap, AutoCAD, Photoshop & InDesign for 7 brownfield sites within Kanawha County West Virginia. Concept Master Plans covered a wide range of features including; RV Park, cabins, trails, amphitheater, kayak launch, boat docks, trails, shopping/dining plaza, splash pad, pickleball courts, skate park, commercial and single & multi-family residential.

St. Albans Riverfront Park Master Plan, City of St. Albans, St. Albans, WV*

Role: Designer

Composed site analysis, conceptual master plans and final master plan featuring an Amphitheater, Boat dock, plaza area, beach area, kayak launch and streetscape improvements using ArcMap, AutoCAD, Photoshop & InDesign for St. Albans Riverfront Park in St. Albans, WV

Fairmont Streetscape Conceptual Master Plan, City of Fairmont, Fairmont, WV*

Role: Designer

Develop and compose deliverable conceptual master plans using AutoCAD, Photoshop & InDesign for a streetscape in Fairmont, WV

Former Hobet Mine Site Master Plan*

Role: GIS/Site Analysis

Composed various site analysis maps for the Former Hobet Mine site using ArcMap, Photoshop & InDesign

Stream & Wetland Restoration, Natural Gas Company, Northern WV*

Role: Lead Designer

Developed designs and planting plans for stream and wetland restorations for 7 different natural gas well pad sites. Worked with a team of staff engineers to complete construction drawing packages. Drawing sets were sent to the EPA for approval.

South Main Streetscape Master Plan, Florida*

Role: Designer

Composed a color rendering of the final design of a streetscape using AutoCAD & Photoshop

Cowen B&O Pond Conceptual Master Plan, Town of Cowen, Cowen, WV*

Role: Designer

Composed a Conceptual Master Plan featuring a dock, restrooms, wetland hiking trail and parking lot using Hand Sketched, ArcMap, Photoshop & InDesign for the B&O Pond in Cowen, WV

Haddad Riverfront Park, City of Charleston, Charleston, WV*

Completed AutoCAD work, Sketchup modeling and rendering for the Haddad Riverfront Park design.

* Work performed prior to joining CEC



Civil & Environmental Consultants, Inc.

James Christie, P.L.A.

Principal



25 YEARS OF EXPERIENCE

EDUCATION

B.S., Landscape Architecture, West Virginia University, 1998

REGISTRATIONS

Registered Landscape Architect

- CO 747
- WV 414
- MD 4176

Bridgeport Development Authority - Board Member

- 2019 - Present

West Virginia Council of Trout Unlimited - Immediate Past Chair

- 2017-2021

Jim is a Principal and licensed Landscape Architect in the Civil department. In his capacity, he is responsible for complete project management within CEC. He is responsible for site design, landscape architecture, site development entitlement services, construction documents, client management, personnel supervision, and construction administration on numerous municipal, commercial, and institutional projects. Jim is a detail-oriented, highly-creative Landscape Architect with 25 years of dedicated experience in designing and implementing projects to support client needs and meet business objectives. His wide range of project experience ranges from landscape design to destination resort design in multiple regions both within the United States and internationally. Jim's passion for recreation as an economic engine shows with over two decades of projects directly related to recreation as a destination and the recreation of economies around tourism as the driver. Jim and his team are working to create ADA inclusive parks and playgrounds throughout West Virginia.

PROJECT EXPERIENCE

Concord University ADA Upgrade Master Plan, Mercer County, Athens, WV*
Norwood ADA All-Inclusive Park, Fairmont Park and Recreation, Fairmont, WV
The Bridge Recreation Complex Masterplan, Omni Associates, Bridgeport, WV
The Bridge Recreation ADA All-Inclusive Park, City of Bridgeport, Bridgeport, WV
Tomlinson Run State Park ADA Fishing Platforms and Fisherman's Trail, WVDNR, New Cumberland, WV
Brooke Hills Park Masterplan, Brooke Hills Park, Wellsburg, WV*
Grand Vue Park Masterplan, Omni Associates, Moundsville, WV
Grand Vue Park RV Park, Omni Associates, Moundsville, WV
Grand Vue Park Pool, Omni Associates, Moundsville, WV
Inwood Park Master Plan and ADA All-Inclusive Park, Berkeley County Parks, Inwood, WV
Vienna Park and Recreation Master Plan, City of Vienna, Vienna, WV
Vienna Pool, Omni Associates, Vienna, WV
Wave Pool Masterplan, MCPARC, Pleasant Valley, WV*
Palatine Park and Boat Ramp Masterplan, Marion County Commission, Fairmont, WV*
Upper Kanawha Valley Recreational Tourism Study, Kanawha County Commission, Charleston, WV
The Tracks Resort and ATV Trail System Masterplan, The Shott Foundation, Bluefield, WV
Fairmont Connectivity Plan, Mainstreet Fairmont, Fairmont, WV,*
Fairmont Cross Town Connector Trail, City of Fairmont, Fairmont, WV
Stonewall Resort RV Park and Camping Master Plan, Stonewall Resort Roanoke, WV
Stonewall Resort Passive Park, Stonewall Resort, Roanoke, WV
Bee Run Adventure Park Master Plan, Braxton County Development Authority, Flatwoods, WV*
Loch Lynn Heights Wetland Boardwalk Trail, Loch Lynn Heights, Loch Lynn Heights, MD*
The Eastern Continental Divide Loop Trail Master Plan, Garrett Trails, Garrett County, MD*
Allegany County Bicycle and Pedestrian Master Plan, Cumberland Area MPO, Allegany County, MD*
Parkersburg Trail Signage Plan, City of Parkersburg, Parkersburg, WV*
Friendsville Bicycle and Pedestrian Masterplan, Town of Friendsville, Friendsville, WV*
Friendsville Trailhead and Boater Parking, Town of Friendsville, Friendsville, WV*
Great Allegheny Passage Mile Markers, Allegheny Trail Alliance, Homestead Allegheny County, PA*
The River Park at Canal Place Feasibility Study, Cumberland, Maryland, Allegany County, MD

* Work performed prior to joining CEC

David Gilmore, P.L.A., MBA

Principal



36 YEARS OF EXPERIENCE

EDUCATION

BSLA, West Virginia University, 1988

MBA with an Emphasis on Management, Point Park University, 2015

REGISTRATIONS

Registered Landscape Architect
• WV 247

ADDITIONAL TRAINING / PROFESSIONAL DEVELOPMENT

- Harvard Leadership Training
- Advanced Project Management Training
- Client First Training
- Risk Management Training
- Past WVASLA State Licensing Board Member
- Past President, WVASLA

36 years of experience on a diverse range of projects with an emphasis on recreational planning. Experience encompasses all aspects of land development, landscape architecture, planning and urban design in both the public and private sector including but not limited to: project, department and office management; business and client development; mentoring / staff development; contract, construction document and technical specification preparation; site analysis; schematic design; construction administration; master and land-use planning (institutional, resort, parks, recreational, residential; industrial, commercial); streetscape; strategic planning, transit oriented development and urban design; landscape and hardscape design; graphic presentation drawing.

PROJECT EXPERIENCE

Park & Recreation Experience

Hurricane Bridge Park Masterplan, Hurricane, WV*

Herbert and Gloria Jones Recreational Trail, Charleston WV*

Prindle Park, Huntington WV*

Rotary and Memorial Park Upgrades, Huntington WV*

Haddad Riverfront Park, Charleston, WV*

Celebration Station All-Inclusive Playground, Charleston WV*

Village of Barboursville Sports Complex, Cabell County, WV*

CAMC General Division Employee Park, Charleston, WV*

Taylor Memorial Park, Brockway PA*

Milton Middle School, Football / Track Complex, Cabell County, WV*

Elk River Riverfront Park & Bike Trail, Charleston, WV*

Wheeling Island Gateway Riverfront Park, Wheeling, WV*

Kanawha Boulevard Bikeway and Greenway Masterplan, Charleston WV*

Kanawha River Boardwalk, Kanawha County, WV*

Valley Park Masterplan, Putnam County WV*

Washington County Parks, Recreation and Open Space Plan, Washington County, PA*

Putnam County Parks, Recreation and Open Space Plan, Putnam County, WV*

Wardensville Parks Masterplan, Wardensville WV*

City of Bluefield Parks, Recreation and Open Space Plan, Mercer County, WV*

Upper Kanawha Valley Trail System, Kanawha County, WV*

Bible Center Church Park, South Charleston, WV*

Mingo Creek Park Masterplan, Washington County, PA*

Cross Creek Park Masterplan, Washington County, PA*

Stonewall Jackson State Park & Resort Master Plan, Roanoke, WV*

East End Community Park, Charleston, WV*



Civil & Environmental Consultants, Inc.

David Gilmore, P.L.A., MBA

Principal

West Liberty University Soccer Complex, West Liberty, WV*
Frontier Park, Charleston, WV*
Meadowlark Park, Fostoria, OH*
Pufferbelly Trail, Fort Wayne, IN*
Shoenbaum Performance Stage, Charleston, WV*
Berry Hills Country Club Master Plan, Charleston, WV*
Dow Heritage Park, Charleston, WV*

Institutional

Davis Creek Elementary School, Barboursville, WV*
Highlawn Elementary School, Huntington, WV*
Heritage Village Dormitories, Bluefield State, Bluefield, WV*
Towers Dormitory, Morgantown, WV*
Charleston Area Medical Center General Memorial Park, Charleston, WV*
King's Daughters Medical Center, Ashland, KY*
St. Mary's Hospital Gateway Masterplan, Huntington, WV*
WVU Evansdale Campus Infrastructure Master Plan, Morgantown, WV*
WVU Law School, Morgantown, WV*
WVU Parkersburg, Child Development Center, Parkersburg, WV*
WVU Parkersburg, Applied Technology Center, Parkersburg, WV*
WV State University Convocation Center, Institute, WV*
WV State Capital Grounds Security Masterplan (CPTED), Charleston, WV*
West Liberty University Health Sciences Center, West Liberty, WV*
West Liberty University Soccer Complex, West Liberty, WV*
Milton Middle School, Football / Track Complex, Cabell County, WV*
Mountwest Community & Technical College Rooftop Plaza, Cabell County, WV*
Rock Creek Masterplan, Danville, WV*
Highlawn Elementary School, Huntington, WV*
National Youth Science Camp Masterplan, Davis, WV*
Dow South Charleston Plant, South Charleston, WV*
Edgewood Elementary School of the Future, Charleston, WV*
John Adams Middle School Rain Garden Design, Charleston, WV*
Huntington Middle School, Huntington, WV*
Beckley Federal Courthouse Security Upgrades, Beckley, WV*
WVU Gateway Study, Morgantown, WV*
Morgan County Courthouse, Berkeley Springs, WV*
Raleigh County Courthouse, Beckley, WV*
First Presbyterian Church Columbarium Master Plan, Charleston, WV*
Bible Center Campus Master Plan, South Charleston, WV*
St. Timothy Lutheran Church, Charleston, WV*
Yeager Airport Gateway and Circulation Study, WV*
The Church of Jesus Christ of Latter-day Saints, Multiple States
Chesapeake Energy Regional Headquarters, Charleston, WV*
Cheat Landing Office Park, Morgantown, WV*
The Villages at Cheat Landing, Morgantown, WV

Streetscape & Urban Revitalization

John Slack Green Plaza, Charleston, WV*
Brawley Walkway Masterplan, Charleston, WV*
Charleston Business Improvement District Masterplan, Charleston WV*
Kanawha Valley Regional Transit Authority Transit Mall, Charleston, WV*
Downtown Huntington / 9th Street Improvements Masterplan*
Huntington Museum of Art Entrance Plaza Masterplan*
Clay Center for the Arts and Sciences Sculpture Garden Masterplan, Charleston, WV*



David Gilmore, P.L.A., MBA

Principal

Charleston Civic Center, Charleston, WV*
Huntington Civic Arena Entrance Plaza Masterplan, Cabell County, WV*
United Steelworkers Plaza, Pittsburgh, PA*
St Mary's Hospital Gateway Improvements, Huntington, WV*
Brawley Walkway Masterplan, Charleston, WV*
John Slack Plaza Masterplan, Charleston, WV*
Court Street Riverfront Overlook, Charleston, WV*
Magic Island Riverfront Overlook, Charleston, WV*
Greenbrier Street Gateway, Charleston, WV*
City of Charleston Gateway Design, Charleston, WV*
40th Street Commercial District, Kanawha City, WV*
Kanawha Boulevard Streetscape, Charleston, WV*
Citilink Transit Center, Fort Wayne, IN*
Pennsylvania Street Improvements, Carmel, IN *
Dupont Road Corridor Improvements, Fort Wayne, IN*
St. Albans Downtown Master Plan, St. Albans, WV*
Florida Street Revitalization Master Plan, Charleston, WV*
I70 Gateway Design, Terre Haute, IN*

Planning / Land Development

City of Logan Comprehensive and Zoning Plan*
Imagine Charleston Downtown Revitalization Plan, Charleston, WV*
Pittsburgh Port Authority Transit Oriented Development Study (TOD), Pittsburgh, PA*
Arlington Park Mobility Study, Cabell County, WV*
West Side Community Strategic Plan Update, Charleston WV*
Hobet Mixed-use Land Development Masterplan / Market Analysis, Boone & Lincoln County, WV*
WV State Capital Grounds Security Masterplan (CPTED), Charleston, WV*
Washington County Multi-Municipal Comprehensive Plan*
Charleston Downtown Urban Revitalization Study, Charleston, WV*
West Side Bike and Pedestrian Trail Update, Charleston, WV*
West Side Community Renewal Plan, Charleston, WV*
Charleston Comprehensive Plan, Charleston, WV*
Kanawha City Corridor Study, Charleston, WV*
City of Charleston MS4 Stormwater Manual, Charleston, WV*

** Work performed prior to joining CEC*

AWARDS

Excellence Award (WVASLA): Haddad Riverfront Park
Honor Award (WVAIA): Haddad Riverfront Park
Honor Award (WVASLA): Kanawha City Corridor Study
Honor Award (WVASLA): John Slack Green
Honor Award (WVAIA): Charleston Coliseum and Convention Center
Merit Award (WVASLA): Dupont 'Hyper' Employee Plaza
Merit Award (WVASLA): Florida Street Revitalization Master Plan
Merit Award (PAAIA): National Youth Science Campus Masterplan
Merit Award (WVASLA): National Youth Science Campus Masterplan
Charleston Civic Center Design – Build Competition – First Place
Top of Rock Design Competition – First Place

PUBLICATIONS / LECTURES

Guest Lecturer, WVU School of Landscape Architecture, Various Courses



Civil & Environmental Consultants, Inc.

David Gilmore, P.L.A., MBA

Principal

Guest Lecturer, 2016 West Virginia Parks and Recreation Conference, Incorporating Crime Prevention Through Environmental Design (CPTED) Principles in the Master Planning Process,

Case Study: WV State Capital Grounds Security Enhancements Masterplan

Guest Lecturer, 2018 West Virginia Parks and Recreation Conference, How Parks, Recreation and Open Space Planning (PROS) can Provide a Framework for the Present and Future Growth of Your Park System,

Case Study: Putnam County Parks Recreation and Open Space Plan

Gilmore D. (2015). If You Build It, They Will Come. WV Focus Magazine. July

<http://www.wvfocus.com/2015/07/build-it-and-they-will-come/>

Brawley Walkway, Reconnecting Downtown Charleston (April 2018); Page 50. Landscape Architect and Specifier News

<https://landscapearchitect.epubxp.com/i/962448-apr-2018/0?m4=>

Firms of the Mid-Atlantic (October 2018); Page 71. Landscape Architect and Specifier News

<https://landscapearchitect.epubxp.com/i/1035839-oct-2018>



Lucas Gardner, PE

Mr. Gardner is a registered professional engineer in West Virginia and has contributed to the growth and success of CEC's civil / site practice in the Bridgeport office by providing high quality civil engineering design services. His experience includes performing design of site layout and grading, stormwater management systems, and erosion and sedimentation controls for various markets and clients including architects, real estate developers, municipalities, oil and gas companies, and non-profit organizations. Lucas manages and contributes to multiple phases of projects from conceptual designs and cost estimates to creation of final construction plans and permitting documents.

Education B.S., Civil Engineering Technology, Fairmont State University

Registration Professional Engineer (WV)



Alex Cook

Mr. Cook has been working as an environmental consultant (ecology) for over 16 years and has provided his environmental services and oversight for a variety of projects involving transportation and highways, energy production and transmission (including renewables), coal mining, oil and gas extraction and transmission, public works, and community development. He demonstrates a strong knowledge of current federal, state, and local regulations pertaining to permitting and agency coordination for environmental and natural resource concerns as they relate to surface waters and navigable rivers, floodplains, national forests, and threatened and endangered species, among other subjects. He also experienced with the NEPA process and has assisted in the preparation of several NEPA decision-making documents. Mr. Cook assists clients through his strong working relationships with quality personnel, stakeholders, and regulators in West Virginia and the surrounding areas.

Education B.S., Biology, West Virginia State University



Matthew Bainbridge, SI

Mr. Bainbridge possesses a diverse background in both Civil Engineering and Geomatics. With experience ranging from site design to geospatial processing, Mr. Bainbridge's capabilities enable him to provide a wide variety of services throughout the industry. His industry experience ranges from manufacturing, architectural, commercial, oil & gas, and power transmission. Starting the remote sensing group in CEC's Bridgeport office in 2015, he currently leads the survey/geospatial group for the office.

Education B.S., Mathematics, Fairmont State University
B.S., Civil Engineering Technology, Fairmont State University

Registration: Surveyor in Training (WV)



Brittany Hedrick, CPSS

Mrs. Hedrick has nine years of experience working as an environmental consultant for natural gas, mining, and manufacturing industries, as well as, municipal entities and financial institutions. She has worked on projects for the public and private sectors. Currently, she is a Certified Professional Soil Scientist, a West Virginia Licensed Remediation Specialist, and holds multiple asbestos licenses. She has designed asbestos abatement projects, as well as, performed multiple asbestos inspections and asbestos air clearance monitoring. In the past, she has worked on a variety of remediation sites from tire recycling facilities to a former DuPont-owned Superfund site. Brittany has served as a project manager on multiple West Virginia Voluntary Remediation Program projects assisting clients in navigating the regulatory framework of the program. Mrs. Hedrick's specialty is soil remediation and she enjoys studying contaminant migration through a soil profile. She is very familiar with groundwater sampling, modeling, and remediation techniques.

Education M.S., Agronomy, West Virginia University,
B.S., Environmental Science, West Virginia University



Courtney Chambers, PE

Ms. Chambers is an assistant project manager who has worked on various civil and geotechnical engineering projects. She has skills in civil/site design, geotechnical engineering, and construction quality assurance. She has been involved in geotechnical site development for commercial and oil & gas sectors, landslide repair and remediation, retaining wall design, construction monitoring, and bridge/roadway drafting.

Education B.S., Civil and Environmental Engineering, West Virginia University

Registration: Professional Engineer (WV)



Foster Tucker

Mr. Tucker has been involved with geotechnical engineering and construction inspection work for six years. His first full time position was here with CEC starting in the summer of 2018 and he has been a member of the geotechnical department ever since. His interest in these types of work began with his first internship at CEC in the summer of 2015. He is excited to continue learning new things and expanding his knowledge about geology, geotechnical engineering, and any exciting projects that come his way.

Education B.S., Geology, West Virginia University



Jonas Kavi, PE, PhD

Jonas Kavi has seven years of structural engineering experience in the design, inspection, evaluation, and load rating of highway bridges, buildings, and miscellaneous structures. He is experienced in the use of various structural materials, including timber, structural steel, reinforced/prestressed concrete, and fiber reinforced polymer in designs. He has extensive experience in nondestructive testing and evaluation of in-service structures, including testing the quality of fiber reinforced polymer rehabilitations of transportation infrastructure.

Education Ph.D., Civil and Environmental Engineering, West Virginia University

M.S., Civil and Environmental Engineering, West Virginia University

B.S., Civil Engineering, Kwame Nkrumah University of Science and Technology

Registration: Professional Engineer (WV)



5.0

Project Experience

BCDA BROWNFIELD ASSESSMENT GRANT

OWNER/CLIENT

Braxton County Development Authority

LOCATION

Sutton, WV

CEC SERVICES

Landscape Architecture/Land Planning

Sustainability Planning/Design

Brownfield Redevelopment Services

Environmental Management Systems Development

Groundwater Monitoring and Assessment

Phase I & II Assessments

RCRA/CERCLA

Site Characterization

Environmental Monitoring/Compliance

Site Selection and Characterization

OWNER OBJECTIVE

The Braxton County Development Authority (BCDA) is dedicated to improving the lives of the residents of Braxton County in central West Virginia. One of these improvements includes further developing the 180-mile-long Elk River and its surrounding areas that wander through forests, farmlands, and small towns. The EPA awarded a brownfield assessment grant to the BCDA to assess dilapidated structures and potentially contaminated sites in communities and on properties adjacent to or near the Elk River and newly proposed Elk River rail trail, primarily in Sutton and Gassaway.

The Elk River Valley is what the U.S. Environmental Protection Agency (EPA) classifies as a brownfield. A brownfield is a property where the expansion, redevelopment, or reuse of which may be complicated due to the presence, or potential presence, of a hazardous substance, pollutant, or contaminant. Cleaning up and revitalizing brownfields often results in substantial economic growth such as employment increases, utilizing existing infrastructure, taking development pressures off of undeveloped open land, and both improving and protecting the environment. These improvements are crucial as Braxton County has seen more than a 14 percent drop in its population over the last ten years. The BCDA also wishes to further develop the new Elk River Rail trail, which will continue to support business growth and development in the struggling communities along the trail.

CEC APPROACH

Not only are there complications from working on an EPA Brownfield site, but the BCDA also faces a big challenge in the lack of public involvement for this project. Getting responses from property owners is difficult as they do not fully understand the benefits of the program. CEC has held several meetings to inform property owners of the benefits of conducting an Environmental Site Assessment (ESA) on their property.

Beyond this, CEC compiles all data to generate final reports and present conclusions, recommendations, and action plans for site cleanup to both federal and local organizations. This guidance helps spark the economic development that Braxton County needs. Multiple Phase I ESAs have been completed, and field sampling plans have been developed and submitted to the EPA for Phase II site assessment activities. The Quality Assurance Project Plan, proposed and written by CEC, was approved by the EPA. The project is ongoing and will continue until 2023.



KANAWHA VALLEY RIVER TRAIL GATEWAY STUDY

OWNER/CLIENT

The Kanawha County Commission

LOCATION

Various Counties, West Virginia

CEC SERVICES

Public Engagement

Social Economics

Planning

Branding Study

Landscape Architecture

OWNER OBJECTIVE

"The Valley" is an inspired ecotourism destination surrounded by the natural beauty of the Kanawha Valley. The project location serves as a gateway, connecting Charleston, WV to the New River Gorge National Park and Preserve. Dramatic hillsides, tree canopies, and framed river views offer a natural playground for recreation, leisure, and discovery. An extensive network of river access, walkways and elevated trails weave through the Valley, tying together a hierarchy of outdoor spaces to the thirteen communities nestled within the Valley. The existing landscape lends itself to engaging outdoor amenities such as trailblazing, horseback riding, off-road jeep adventures, ATV networks and diverse lodging opportunities like glamping (glamor camping). Proposed ideas in the masterplan aim to address the tourism gap along the Upper Kanawha Valley River corridor, providing amenities currently unknown to the area.

The Kanawha County Commission was seeking to coordinate the planning of trail systems proposed by various organizations in the Upper Kanawha Valley (UKV), as well as address planning to develop Kanawha River access points at strategic locations that will attract not only trails but river related recreation to the towns.

CEC APPROACH

CEC performed an inventory and analysis of potential use and development of the site. Incorporating the public engagement process, the design team developed a comprehensive master plan for the region. The team's vision serves as a catalyst for tourism growth in the Upper Kanawha Valley for interventions along the Kanawha River as well as the surrounding valley landscape. The vision of starting and ending the adventures in the communities of the Valley will bring locals and visitors alike to a unique network of communities and outdoor recreation.





Civil & Environmental Consultants, Inc.

TOMLINSON RUN STATE PARK TRAIL IMPROVEMENTS

OWNER/CLIENT

West Virginia Division of Natural Resources

LOCATION

New Cumberland, WV

CEC SERVICES

ADA Accessibility Analysis

Landscape Architecture/Land Planning

Bathymetric/Hydrographic Surveys

LiDAR Surveys – Short and Long Range

OWNER OBJECTIVE

The West Virginia Division of Natural Resources (WVDNR) is a state agency that manages and protects natural resources in the state, from wildlife resources to state parks. According to the West Virginia Department of Commerce, WVDNR preserves and protects natural areas of unique scenic, scientific, cultural, archaeological, or historic significance while also providing countless outdoor recreational opportunities for West Virginia residents and visitors.

To complement a stream mitigation project within Tomlinson Run State Park, the WVDNR wished to make a new trail alignment and enhance the amenities found along these trails. This would improve the visitor experience at the State Park and encourage visitors to be more engaged with the surrounding park ecosystem. Tomlinson Run State Park is located near the top of the northern panhandle in West Virginia. The 1,398 acres include a heavily forested wilderness area and a developed area with traditional park amenities, such as hiking, fishing, boating, swimming, and camping.

CEC APPROACH

Following the analysis of existing site conditions and the proposed stream mitigation design, CEC proposed a trail alignment that best followed the improved stream and wetland areas. Identified platform locations were chosen following the analysis and were based on areas with the best fishing access or the best views.

The stream mitigation project included the transformation of three earthen dam ponds into wetlands and the restoration of the South Fork Tomlinson Run for improved fish habitat. Our proposed trail improvements complement the mitigation project and showcase the work that was completed. Care had to be taken during the design phase of the project to ensure that the proposed improvements were ADA compliant, due to the steep terrain found at the site.

The final design included approximately 3,000 feet of trail improvements, six fishing platforms (three of which are ADA compliant), two overlook platforms with views of the wetlands, a bird blind, and interpretive signage explaining the surrounding wildlife and the importance of the environmental work being completed. The final design enhanced park amenities for visitors. The project was completed in July 2022.



CACAPON RESORT STATE PARK NEW BIKE TRAILS

OWNER/CLIENT

West Virginia Division Of Natural Resources

LOCATION

Berkeley Springs, WV

CEC SERVICES

Erosion & Sedimentation Control/NPDES Permitting

Landscape Architecture/Land Planning

Detailed Design

OWNER OBJECTIVE

West Virginia Division of Natural Resources was in need of design and construction of 35 miles of biking trails of various skill level through the use of Federal Economic Development Agency funding sources. The project was the first of its type to be funded by the Federal EDA and was to be used as a first attempt for additional recreational-based funding by the EDA in the future.

CEC APPROACH

CEC alongside its subconsultant partners created a fast-tracked schedule to design, permit, bid, and construct 5 miles of the 35-mile total as an initial approach to coordinate and communicate clearly with the EDA on how the process of the project in smaller phase prior to the implementation of the 30-mile contract. In order to meet the fast-tracked deadline, CEC communicated early on with the West Virginia Department of Environmental Protection to help promote the design characteristics and final construction of a typical professional clay-pack surface mountain-bike trail. The final product of an earthen-surface mountain-bike trail would not satisfy the WVDEP's definition of a final product, CEC and its subconsultant were able to educate the WVDEP on the control measures and their long-term effectiveness of stability and sedimentation control of the mountain-bike trails to have the plans permitted and approved in a fast-tracked manner to keep the project on schedule. Phase one construction has been awarded and construction will start in late April 2024 for the 5 mile portion. Phase two is in the process of being designed and additional correspondence with the WVDEP will be necessary as well as the Army Corps of Engineers Nationwide permitting for stream crossings.

CROSS CREEK PARK BOAT LAUNCH AND PLAYGROUND

OWNER/CLIENT

Washington County

LOCATION

Washington County, PA

CEC SERVICES

Survey / GPS / GIS Services

Landscape Architecture / Land Planning

Site Grading / Earthwork Analysis

Erosion & Sedimentation Control / NPDES Permitting

Stormwater Management / BMP Design

Wetlands and Waters Delineations

NPDES Permit Negotiation

OWNER OBJECTIVE

The Washington County Department of Parks and Recreation is responsible for 5,500 acres of park land in Washington County, Pennsylvania, offering picnic shelters, nature trails, bicycle and bridle trails, hunting and fishing, as well as recreational programs and special events. Cross Creek Park is one of three county parks the department is responsible for.

The County needed a design firm to provide design and bidding assistance for a new boat launch adjacent to the lake in Cross Creek Park. The terrain at the project site was hilly and vegetated with small streams on two sides, the lake on another and vegetated parkland on the fourth border. Balancing the site, which was located on a fairly steep slope, would be challenging, as would permitting the encroachment on the streams and lake. In addition, the design would need to provide ADA access to the lake.

CEC APPROACH

CEC performed survey and ecological services to delineate any streams and wetlands and also provided conceptual design services that offered several potential plans to include all requested design components and achieve Washington County's goals. Once a concept design was selected, CEC provided detailed design drawings for permitting and, upon approval, the final design drawings for bidding and construction cost estimates. CEC offered guidance to Washington County through the bidding process.

Construction of the project was completed in 2015 and provides residents and visitors with a great recreation facility that includes a safe boat launch with courtesy docks, an ADA fishing pier, visitor and boat trailer parking, restroom facilities, a water well, a picnic pavilion, and a playground. The design also included some rip-rap stone at the shoreline to provide additional fish habitat.





Civil & Environmental Consultants, Inc.

THE RIVER PARK AT CANAL PLACE

OWNER/CLIENT

State of Maryland

LOCATION

Cumberland, MD

CEC SERVICES

Landscape Architecture/Land Planning

LiDAR Survey

Bathymetric Survey

OWNER OBJECTIVE

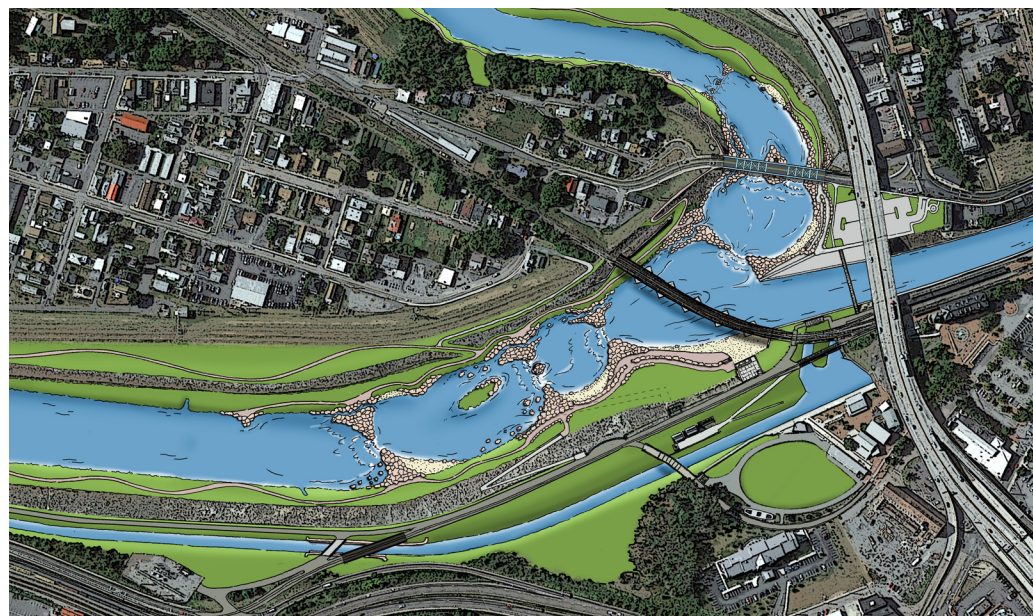
The Canal Place Preservation and Development Authority, a governmental agency for the State of Maryland, oversees the preservation, development, and management of the historic Chesapeake and Ohio (C&O) Canal Heritage Area. The goal of the Authority is to transform the area to enhance recreation, commerce, civic life, transportation, education, and ecology while preserving the historical significance of the Canal. The C&O Canal opened in 1850 and was used for travel between Washington D.C. to Cumberland, Maryland. It was vital to the transportation of coal, lumber, and agricultural products.

To build upon the success of the C&O Canal National Historical Park, the client needed a conceptual masterplan for park improvements and a feasibility study that creates a roadmap to opening up the Potomac River Corridor for recreational use. The Potomac River Corridor is a U.S. Army Corps of Engineers (USACE) flood control project and includes an abandoned dam. The final masterplan would be used to garner future support and funding for the project.

CEC APPROACH

CEC's feasibility study included the removal of the dam and replacing it with whitewater park features (waves, chutes, drops, eddies, etc.) which open the river basin to kayaking, tubing, fishing, trails, and more. CEC studied existing recreational facilities, interviewed federal agencies, studied the dam and bridge designs, created conceptual renderings of in and out-of-water facilities (whitewater parks, boater access, fish passage, trails, etc.), and met with several governmental agencies, such as USACE and the Department of Natural Resources.

Thanks to CEC's masterplan and feasibility study, the client has currently secured \$12 million for the first phase of engineering and construction with the hopes of beginning engineering in the fall of 2022.



SOUTHSIDE RIVERFRONT PARK – NEW BOAT LAUNCHES

OWNER/CLIENT

LaQuatra Bonci Associates

LOCATION

Pittsburgh, PA

CEC SERVICES

Riverfront Planning & Design

Environmental Permitting

Design Support

Regulatory Requirement Review & Agency
Coordination

Erosion & Sedimentation Control Plan

OWNER OBJECTIVE

Pittsburgh was chosen to host the 2005 Bassmaster Classic in July 2005. In addition to fishing, there was a huge outdoor show including boats, fishing tackle, seminars on fishing and conservation, and a fishing derby for children. Due to strong environmental laws and enforcement over the past several decades, the fish population in Pittsburgh's Three Rivers (Allegheny, Monongahela and Ohio) has flourished. For this reason, Pittsburgh was chosen for this high profile event.

CEC APPROACH

CEC was involved in the preparation of this event, as improvements were made to boat launches throughout the area. CEC's ecological and engineering staff concentrated their efforts at the South Side Riverfront Park. Improvements to this site consisted of a new three-lane boat launch, floating docks, and associated site improvements. CEC was contracted by LaQuatra Bonci Associates of Pittsburgh to provide permitting and design support. CEC's services included preparation of a Chapter 105 Permit Application for Waterways Encroachment and supporting environmental data, as well as pile and concrete design. CEC was able to coordinate with the local regulatory agencies during their review of the plans, and respond to comments to facilitate accelerated plan approvals for this important project.



6.0 References

Deidra Ritchie

Executive Director
Canal Place Preservation and Development Authority
13 Canal Street STE 301
Cumberland, MD 21502
301-724-3655
deidra.ritchie@maryland.gov

Terrell Ellis

President
Advantage Valley
PO Box 1925
Charleston, WV 25327
304-352-1165
terrell@advantagevalley.com

Andy Blake

City Manager
City of Martinsburg
206 Viking Way
Martinsburg, WV 25401
304-264-2131
ablake@cityofmartinsburg.org



"CEC has been responsive, mindful of costs, and have addressed any obstacle or issue with sound judgement. They have proven an ability to work with City staff, contractors, and other stakeholders to resolve or eliminate problems. I consider them a very important part of the success of our projects. We have been pleased with the quality of work performed by CEC and the responsiveness of their staff. I would recommend CEC to any government agency looking for professional planning or engineering services. – Joe Shuttleworth, Director of Parks and Recreation, City of Bridgeport"

"The City appreciates the time and effort of the staff at CEC, to ensure Mayor and Council's initiatives are completed in a timely fashion. The City is proud of the public improvements we are able to complete throughout the City's residential and commercial neighborhoods."

CEC is truly a part of our success." – Mark Baldwin, Former City Manager, City of Martinsburg





7.0 Required Forms and Documents

DESIGNATED CONTACT: Vendor appoints the individual identified in this Section as the Contract Administrator and the initial point of contact for matters relating to this Contract.

(Printed Name and Title) David Gilmore, PLA, MBA - Principal

(Address) 3574 Teays Valley Road, Hurricane, WV 25526


(Phone Number) / (Fax Number) 304-933-3119 / 304-933-3327

(email address) dgilmore@cecinc.com

CERTIFICATION AND SIGNATURE: By signing below, or submitting documentation through wvOASIS, I certify that: I have reviewed this Solicitation/Contract in its entirety; that I understand the requirements, terms and conditions, and other information contained herein; that this bid, offer or proposal constitutes an offer to the State that cannot be unilaterally withdrawn; that the product or service proposed meets the mandatory requirements contained in the Solicitation/Contract for that product or service, unless otherwise stated herein; that the Vendor accepts the terms and conditions contained in the Solicitation, unless otherwise stated herein; that I am submitting this bid, offer or proposal for review and consideration; that this bid or offer was made without prior understanding, agreement, or connection with any entity submitting a bid or offer for the same material, supplies, equipment or services; that this bid or offer is in all respects fair and without collusion or fraud; that this Contract is accepted or entered into without any prior understanding, agreement, or connection to any other entity that could be considered a violation of law; that I am authorized by the Vendor to execute and submit this bid, offer, or proposal, or any documents related thereto on Vendor's behalf; that I am authorized to bind the vendor in a contractual relationship; and that to the best of my knowledge, the vendor has properly registered with any State agency that may require registration.

By signing below, I further certify that I understand this Contract is subject to the provisions of West Virginia Code § 5A-3-62, which automatically voids certain contract clauses that violate State law; and that pursuant to W. Va. Code 5A-3-63, the entity entering into this contract is prohibited from engaging in a boycott against Israel.

Civil & Environmental Consultants, Inc.

(Company) 

(Signature of Authorized Representative)

David Gilmore, PLA, MBA - Principal 4/5/2024

(Printed Name and Title of Authorized Representative) (Date)

304-933-3119 / 304-933-3327

(Phone Number) (Fax Number)

dgilmore@cecinc.com

(Email Address)

ADDENDUM ACKNOWLEDGEMENT FORM
SOLICITATION NO.: DNR2500000001

Instructions: Please acknowledge receipt of all addenda issued with this solicitation by completing this addendum acknowledgment form. Check the box next to each addendum received and sign below. Failure to acknowledge addenda may result in bid disqualification.

Acknowledgment: I hereby acknowledge receipt of the following addenda and have made the necessary revisions to my proposal, plans and/or specification, etc.

Addendum Numbers Received:

(Check the box next to each addendum received)

- | | |
|---|--|
| <input type="checkbox"/> Addendum No. 1 | <input type="checkbox"/> Addendum No. 6 |
| <input type="checkbox"/> Addendum No. 2 | <input type="checkbox"/> Addendum No. 7 |
| <input type="checkbox"/> Addendum No. 3 | <input type="checkbox"/> Addendum No. 8 |
| <input type="checkbox"/> Addendum No. 4 | <input type="checkbox"/> Addendum No. 9 |
| <input type="checkbox"/> Addendum No. 5 | <input type="checkbox"/> Addendum No. 10 |

I understand that failure to confirm the receipt of addenda may be cause for rejection of this bid. I further understand that any verbal representation made or assumed to be made during any oral discussion held between Vendor's representatives and any state personnel is not binding. Only the information issued in writing and added to the specifications by an official addendum is binding.

Civil & Environmental Consultants, Inc.

Company



Authorized Signature

11-20-2024

Date

NOTE: This addendum acknowledgment should be submitted with the bid to expedite document processing.

CERTIFICATE OF *Authorization*

STATE BOARD OF REGISTRATION FOR PROFESSIONAL ENGINEERS

*The West Virginia State Board of Registration for Professional Engineers
having verified the person in responsible charge is registered in
West Virginia as a professional engineer for the noted firm, hereby certifies*

CIVIL & ENVIRONMENTAL CONSULTANTS, INC.

C02231-00

Engineer in Responsible Charge: STEVEN A. CAIN - WV PE 015264

*has complied with section §30-13-17 of the West Virginia Code governing
the issuance of a Certificate of Authorization. The Board hereby notifies you of its
certification with issuance of this Certification of Authorization for the period of:*

January 1, 2024 - December 31, 2025

providing for the practice of engineering services in the State of West Virginia.

IF YOU ARE REQUIRED TO REGISTER WITH THE SECRETARY OF STATE'S OFFICE,
PLEASE SUBMIT THIS CERTIFICATE WITH YOUR APPLICATION.



IN TESTIMONY WHEREOF, THE WEST VIRGINIA STATE BOARD OF
REGISTRATION FOR PROFESSIONAL ENGINEERS HAS ISSUED THIS COA
UNDER ITS SEAL, AND SIGNED BY THE PRESIDENT OF SAID BOARD.

Scott E. Thomas Jr.

BOARD PRESIDENT



CERTIFICATE OF LIABILITY INSURANCE

DATE (MM/DD/YYYY)

4/1/2025

3/29/2024

THIS CERTIFICATE IS ISSUED AS A MATTER OF INFORMATION ONLY AND CONFERS NO RIGHTS UPON THE CERTIFICATE HOLDER. THIS CERTIFICATE DOES NOT AFFIRMATIVELY OR NEGATIVELY AMEND, EXTEND OR ALTER THE COVERAGE AFFORDED BY THE POLICIES BELOW. THIS CERTIFICATE OF INSURANCE DOES NOT CONSTITUTE A CONTRACT BETWEEN THE ISSUING INSURER(S), AUTHORIZED REPRESENTATIVE OR PRODUCER, AND THE CERTIFICATE HOLDER.

IMPORTANT: If the certificate holder is an ADDITIONAL INSURED, the policy(ies) must have ADDITIONAL INSURED provisions or be endorsed. If SUBROGATION IS WAIVED, subject to the terms and conditions of the policy, certain policies may require an endorsement. A statement on this certificate does not confer rights to the certificate holder in lieu of such endorsement(s).

PRODUCER Lockton Companies 444 W. 47th Street, Suite 900 Kansas City MO 64112-1906 (816) 960-9000 kcasu@lockton.com	CONTACT NAME: PHONE (A/C. No. Ext): E-MAIL ADDRESS: INSURER(S) AFFORDING COVERAGE INSURER A: National Union Fire Ins Co Pitts. PA INSURER B: New Hampshire Insurance Company INSURER C: Allied World Surplus Lines Insurance Company INSURER D: INSURER E: INSURER F:	FAX (A/C. No): NAIC # 19445 23841 24319
INSURED 1519239 CIVIL & ENVIRONMENTAL CONSULTANTS, INC. 700 CHERRINGTON PARKWAY MOON TOWNSHIP PA 15108		

COVERAGES**CERTIFICATE NUMBER:** 20103565**REVISION NUMBER:** XXXXXXXX

THIS IS TO CERTIFY THAT THE POLICIES OF INSURANCE LISTED BELOW HAVE BEEN ISSUED TO THE INSURED NAMED ABOVE FOR THE POLICY PERIOD INDICATED. NOTWITHSTANDING ANY REQUIREMENT, TERM OR CONDITION OF ANY CONTRACT OR OTHER DOCUMENT WITH RESPECT TO WHICH THIS CERTIFICATE MAY BE ISSUED OR MAY PERTAIN, THE INSURANCE AFFORDED BY THE POLICIES DESCRIBED HEREIN IS SUBJECT TO ALL THE TERMS, EXCLUSIONS AND CONDITIONS OF SUCH POLICIES. LIMITS SHOWN MAY HAVE BEEN REDUCED BY PAID CLAIMS.

INSR LTR	TYPE OF INSURANCE	ADDL INSD	SUBR WVD	POLICY NUMBER	POLICY EFF (MM/DD/YYYY)	POLICY EXP (MM/DD/YYYY)	LIMITS
A	<input checked="" type="checkbox"/> COMMERCIAL GENERAL LIABILITY <input type="checkbox"/> CLAIMS-MADE <input checked="" type="checkbox"/> OCCUR GEN'L AGGREGATE LIMIT APPLIES PER: <input type="checkbox"/> POLICY <input type="checkbox"/> PRO-JECT <input type="checkbox"/> LOC OTHER:	N	N	526-81-68	4/1/2024	4/1/2025	EACH OCCURRENCE \$ 1,000,000 DAMAGE TO RENTED PREMISES (Ea occurrence) \$ 500,000 MED EXP (Any one person) \$ 25,000 PERSONAL & ADV INJURY \$ 1,000,000 GENERAL AGGREGATE \$ 2,000,000 PRODUCTS - COMP/OP AGG \$ 2,000,000 \$
A	<input checked="" type="checkbox"/> AUTOMOBILE LIABILITY <input checked="" type="checkbox"/> ANY AUTO OWNED AUTOS ONLY <input type="checkbox"/> SCHEDULED AUTOS HIRED AUTOS ONLY <input type="checkbox"/> NON-OWNED AUTOS ONLY	N	N	448-96-61 (AOS) 448-96-62 (MA)	4/1/2024 4/1/2024	4/1/2025 4/1/2025	COMBINED SINGLE LIMIT (Ea accident) \$ 1,000,000 BODILY INJURY (Per person) \$ XXXXXXXX BODILY INJURY (Per accident) \$ XXXXXXXX PROPERTY DAMAGE (Per accident) \$ XXXXXXXX \$ XXXXXXXX
	<input type="checkbox"/> UMBRELLA LIAB <input type="checkbox"/> EXCESS LIAB DED <input type="checkbox"/> RETENTION \$			NOT APPLICABLE			EACH OCCURRENCE \$ XXXXXXXX AGGREGATE \$ XXXXXXXX \$ XXXXXXXX
B A	WORKERS COMPENSATION AND EMPLOYERS' LIABILITY ANY PROPRIETOR/PARTNER/EXECUTIVE OFFICER/MEMBER EXCLUDED? (Mandatory in NH) If yes, describe under DESCRIPTION OF OPERATIONS below	Y/N <input checked="" type="checkbox"/> N	N	WC 015-89-3683 (AOS) WC 015-89-3684 (CA)	4/1/2024 4/1/2024	4/1/2025 4/1/2025	<input checked="" type="checkbox"/> PER STATUTE <input type="checkbox"/> OTH-ER E.L. EACH ACCIDENT \$ 1,000,000 E.L. DISEASE - EA EMPLOYEE \$ 1,000,000 E.L. DISEASE - POLICY LIMIT \$ 1,000,000
C	PROFESSIONAL LIABILITY	N	N	0313-6673	4/1/2024	4/1/2025	\$1,000,000 EACH CLAIM; \$1,000,000 AGGREGATE

DESCRIPTION OF OPERATIONS / LOCATIONS / VEHICLES (ACORD 101, Additional Remarks Schedule, may be attached if more space is required)

CERTIFICATE HOLDER**CANCELLATION**20103565
EVIDENCE OF COVERAGE

SHOULD ANY OF THE ABOVE DESCRIBED POLICIES BE CANCELLED BEFORE THE EXPIRATION DATE THEREOF, NOTICE WILL BE DELIVERED IN ACCORDANCE WITH THE POLICY PROVISIONS.

AUTHORIZED REPRESENTATIVE

© 1988-2015 ACORD CORPORATION. All rights reserved.



Civil & Environmental
Consultants, Inc.

3574 Teays Valley Road | Hurricane, WV 25526 | www.cecinc.com