

**GREENWAY**
ENGINEERING704 Foxcroft Avenue
Martinsburg, West Virginia 25401pt. 1 of 2
pgs. 1-10**TRANSMITTAL**Project Name: Martinsburg Readiness Center Addition/Alteration Design EOIFile No: GE File #8734.01Date: June 25, 2024To: WV Dept of Admin (Purchasing)Fax Number 304-558-3970Purchasing Division2019 Washington St. EastCharleston, WV 25305-0130Attn: Bid Clerk (Via Fax)From: Jamie MacLean**GREENWAY ENGINEERING**Copied Mr. David H. PaulinePhone: 304-620-5111(Via email delivery)Fax: 540-722-9528Delivery: ☐ Fed Ex☐ U.S. Mail☐ Courier☐ Pick Up☒ Other Facsimile☐ Urgent☒ For Your Review☐ As You Requested☐ Please Comment**Message**To: Department of Administration, Purchasing Division
2019 Washington Street East, Charleston, WV 25305-0130

Vendor Name: Greenway Engineering, Inc.

Buyer: Mr. David H. Pauline, phone 304-558-0067, email David.H.Pauline@wv.gov

Solicitation No: CEO1 0603 ADJ2400000005, Amendment 0

Project Name: Martinsburg Readiness Center Addition/Alteration Design Expression of Interest

Bid Opening Date: June 25, 2024

Bid Opening Time: 1:30 PM EST

Fax Number: 304-558-3970

RECEIVED**2024 JUN 25 PM 12:32****WV PURCHASING
DIVISION****Hand Delivery and Pick Ups Only:**

Received by: _____ Date: _____

Please Print Name: _____



EXPRESSION OF INTEREST

Martinsburg Readiness Center
Addition-Alteration Design EOI

Prepared For:

WV Army National Guard c/o
WV Purchasing Division
Adjutant General's Office
WV Army National Guard
731 Novak Drive
Martinsburg, WV 25405



COVER LETTER

June 25, 2024

Department of Administration, Purchasing Division
2019 Washington Street East,
Charleston WV 25405-0130

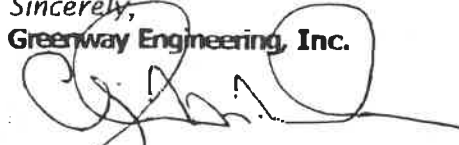
Attn: Bid Clerk

Re: Martinsburg Readiness Center Addition/Alteration Design - Expression of Interest

Dear Sir or Madam:

Greenway Engineering is pleased to provide our response to the Request for Expression of Interest to be considered for the provision of civil engineering and architectural services to accomplish the stated project goal of design and development of construction documents to the 35% completion level, for the construction of an addition to the Martinsburg Readiness Center. Greenway Engineering has provided a local presence for civil engineering, transportation, and land surveying since 1971 for a multitude of projects and clients. We have extensive knowledge and understanding of the various municipal entities, regulators, and codes. Our team of engineers, surveyors, planners, and scientists are expertly familiar with the local environment and infrastructure and will be able to provide the services requested in this EOI. We plan to augment our strong team of professionals, with a partnership with Four Square Architects, LLC, to be able to optimally perform to meet the needs outlined in the EOI. Greenway Engineering is excited and appreciative of this opportunity to be considered for the selection of this work. We are available at your convenience to meet you at your office to further discuss this proposal. Please let me know if you have any questions. We look forward to the opportunity to work with the WV Army National Guard, as a partner with the WV Purchasing Division.

Sincerely,
Greenway Engineering, Inc.



Christopher Mohn, AICP
Vice President / Director of Planning

704 Foxcroft Ave.
Martinsburg, WV 25401



540.662.4185
www.GreenwayEng.com

FIRM INFORMATION



Experienced, Knowledgeable, Local

Formed in 1971, Greenway Engineering, Inc. is one of the largest multi-disciplined consulting engineering firms in the region serving local clients for over 50 years.

Greenway Engineering offers a wide variety of services including:

- Land Planning
- GIS
- QC Inspections
- Civil Engineering
- Surveying
- Wetlands Evaluations

These services are coupled with an extensive knowledge of local planning, building, development, and environmental regulations. Our team has cultivated and established continued working relationships with our clients as well as the regulatory and governmental personnel for each of the disciplines offered. This ensures the prompt and efficient process from plan to execution of your engineering needs.

Regional Area of Service Includes:

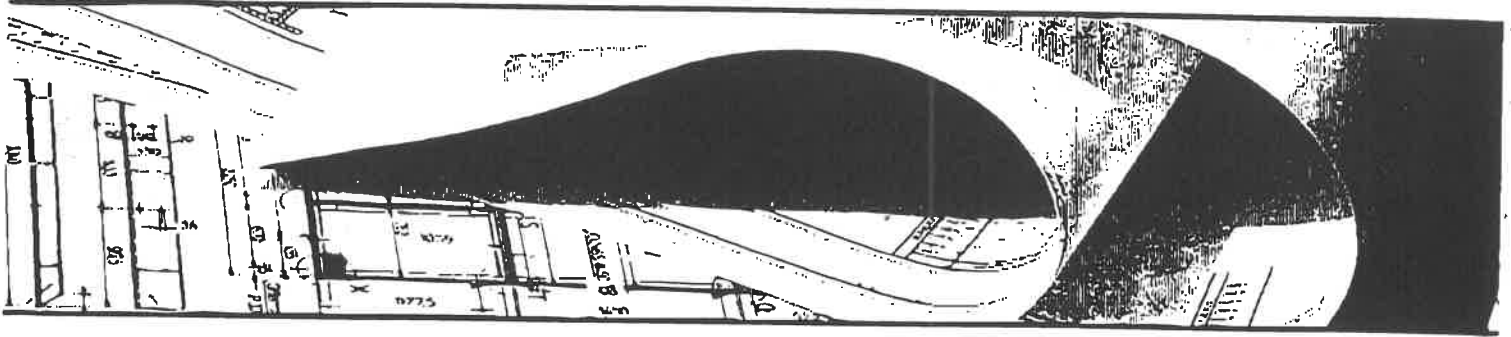
- Berkeley County
- Frederick County
- Warren County
- Morgan County
- City of Winchester
- Town of Front Royal
- Jefferson County
- Stephens City
- Shenandoah County
- City of Martinsburg
- Middletown
- Strasburg
- City of Ranson
- Clarke County
- Woodstock
- Charles Town
- Town of Berryville

704 Foxcroft Ave,
Martinsburg, WV 25401



304.620.5111

SERVICES | LAND PLANNING



Land Planning

Greenway Engineering's Land Planning Division has extensive experience working with clients and government officials to obtain project approvals. Greenway's Director of Land Planning, has over 26 years of professional planning experience within the Winchester-Frederick County community and the northern Shenandoah Valley region. The Land Planning Division specializes in land use design, land use policy, and public process services in a cost effective manner with a very successful project approval record for our clientele.

Public Process Services

Professional experience in public sector work affording extensive knowledge of public processes necessary to obtain project approvals. Over 44 years of working relationships with public officials and professional staff in the City of Winchester, Frederick County, Warren County, and incorporated Towns in the northern Shenandoah Valley.

Land Use Services

Providing all aspects of land use services required for property development entitlements, including comprehensive planning, zoning entitlements, land use design, development programming, and land use code legislation.

Development Programming Services

including site feasibility studies, land use implementation plans, and community impact analysis assessment studies.

Greenway Engineering provides these planning services in a cost effective and timely manner with a very successful public approval record for our clientele.

Land Planning Services

- Comprehensive Planning
- Master Development Planning
- Residential, Commercial, Industrial, and Mixed Land Use Planning
- Conceptual Design Layout
- Feasibility Studies
- Rezoning Entitlement
- Community Impact Analysis Assessment
- Development Programming and Proffer Statements
- Code and Ordinance Development
- Public Process Services
- Local and Regional Comprehensive Policy Planning
- Ordinance Development
- Rural Subdivision Planning and Design
- Landscape Planning and Design
- Conditional/Special Use Permitting
- Variances/Exceptions and Appeals
- Site Analysis and Schematic Designs

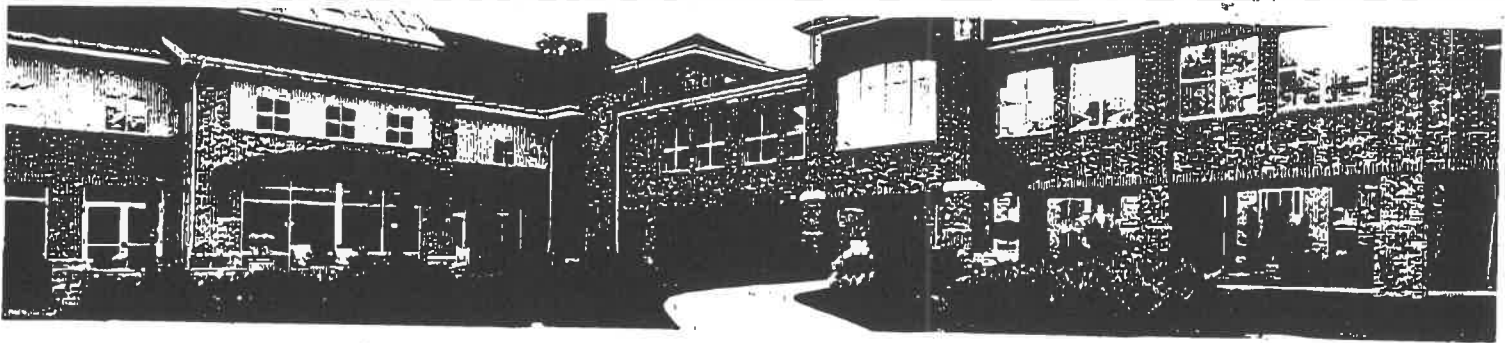
For information regarding additional services offered by our company, please refer to the Greenway Engineering Website at: GreenwayEng.com/planning

704 Foxcroft Ave,
Martinsburg, WV 25401



304.620.5111

SERVICES | CIVIL ENGINEERING



Civil Engineering

Client communication is the key to project execution and success. At Greenway, we strive to keep our clients informed and involved in all aspects of a project's timeline. Telephone, video conferences, and onsite meetings are essential elements of a successful project. Greenway Engineering takes pride in staying at the forefront of Civil Engineering services thus providing state of the art design, consulting, and project management.



Knowledgeable and Experienced in the Frederick County Area

Formed in 1971, Greenway has been working and developing projects within the Shenandoah Valley for over 44 years. Our extensive experience of the topography, utilities, and governmental process provides us with valuable knowledge to provide an efficient and thorough design for our clients. We provide local information in preliminary and final design that is difficult to obtain from other firms.

Environmentally Responsible Engineering

Greenway takes pride in investigating ways to maximize land use while minimizing impacts to environmentally sensitive areas. We also provide methods and solutions in the area of water quality measures for stormwater runoff. Greenway employs LEED accredited professional staff to ensure site development methods meet national environmental design standards.

Engineering Services

- Site Selection, Preparation, and Development
- Feasibility Studies and Layouts
- Residential Design; Subdivisions and Urban
- Commercial and Industrial Site Design
- Governmental/Institutional Plans
- Erosion and Sediment Control Plans
- Stormwater Management Design: Quantity and Quality
- Road, Highway, and Utility Design
- Water and Sewer System Modeling
- Floodplain Studies and Permitting
- Grading and Earthwork
- Low Impact Development/ LEED Certified

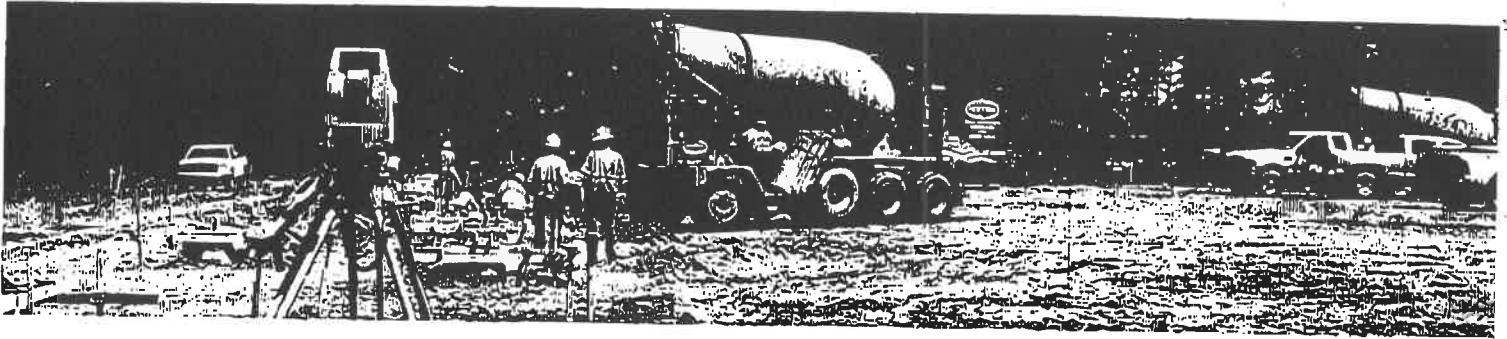
For information regarding additional services offered by our company, please refer to the Greenway Engineering Website at: GreenwayEng.com/civil-engineering

704 Foxcroft Ave.
Martinsburg, WV 25401



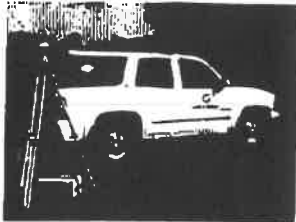
304.620.5111

SERVICES | SURVEYING



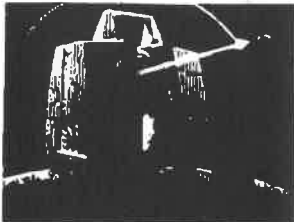
Land Surveying

With more than 44 years of experience, our surveyors, using the latest technology and equipment, work quickly and efficiently to produce comprehensive and accurate results while keeping the client informed of project status every step of the way.



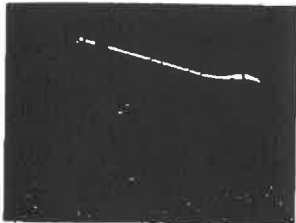
Global Positioning Systems

GPS provides surveying and mapping data of the highest accuracy. GPS-based data collection is much faster than conventional surveying and mapping techniques, reducing the amount of equipment and labor required.



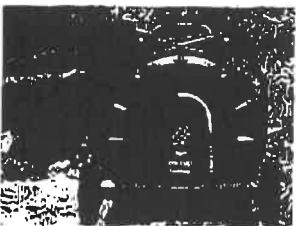
LIDAR 3D Scanning

Utilizing our state-of-the-art LIDAR mapping device, we are able to produce a robust, accurate 3D representation of the surveyed site that can be used for a variety of applications.



UAV Topography & Imaging

UAV aerial mapping can achieve cost savings over traditional survey methods and manned flyovers. We have the ability to fly our UAVs under cloud cover and in moderately inclement weather, avoiding time delays associated with other topographic methods.



Underground Utility Location

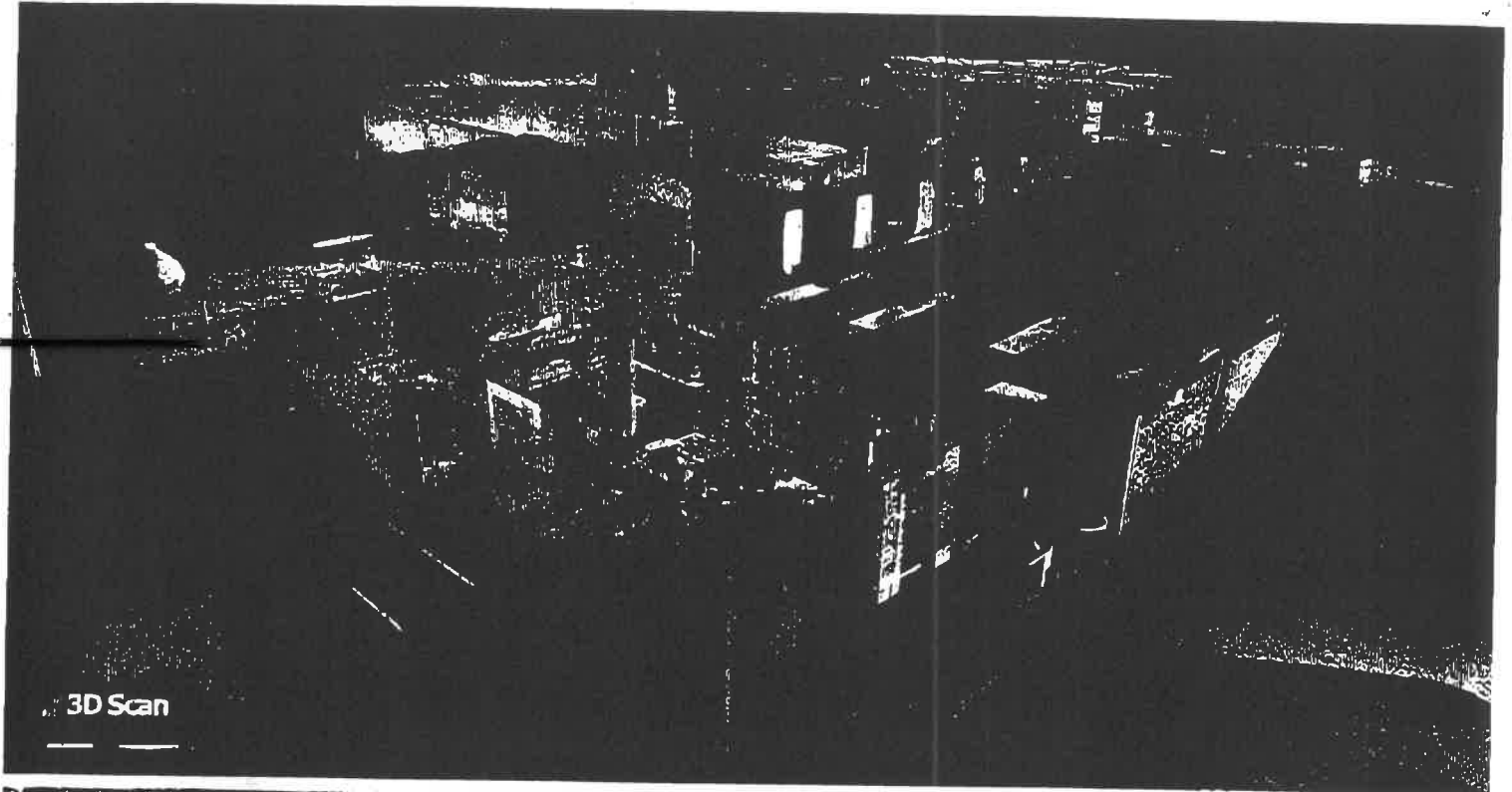
We locate underground electric, telephone, water, and gas lines using the newest induction/conduction sensing equipment available prior to design, thereby avoiding costly and time consuming issues that might otherwise arise concerning them.

Surveying Services

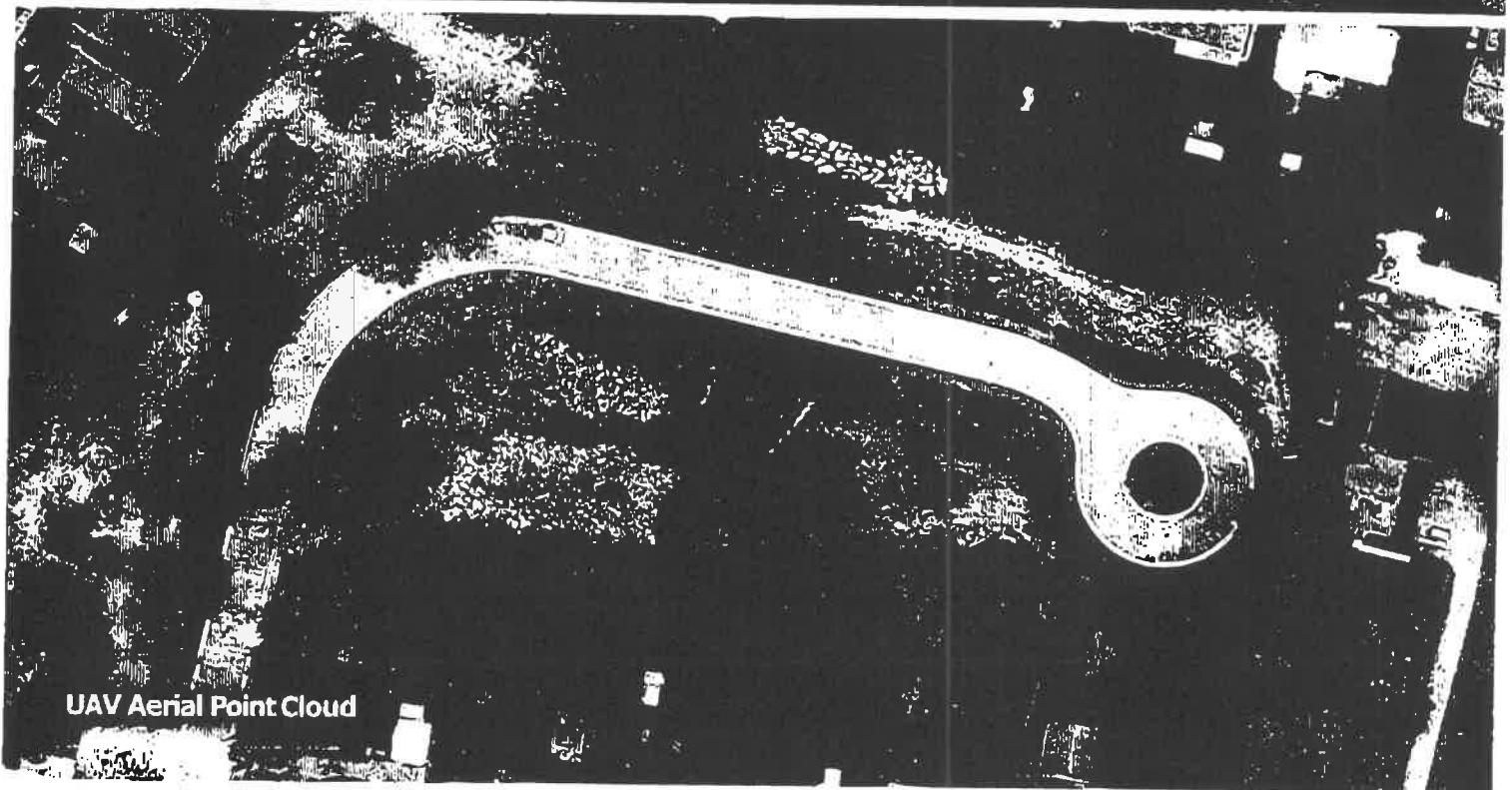
- Boundary Surveys
- As-Built Surveys
- ALTA/ACSM Surveys
- Utility Easement Surveys
- Route Location Surveys
- Record Plat Preparation
- Route Location Surveys
- Drainfield Location Plats
- Easement Plats
- Rezoning
- Construction Stake-Out
- Field-Run Topographic Surveys
- House Location Surveys/Title Surveys
- Mortgage Surveys
- Deed Research
- Topographic Surveys
- Digital Terrain Modeling

For information regarding additional services offered by our company, please refer to the Greenway Engineering Website at: GreenwayEng.com/land-surveying

SERVICES | SURVEYING



3D Scan



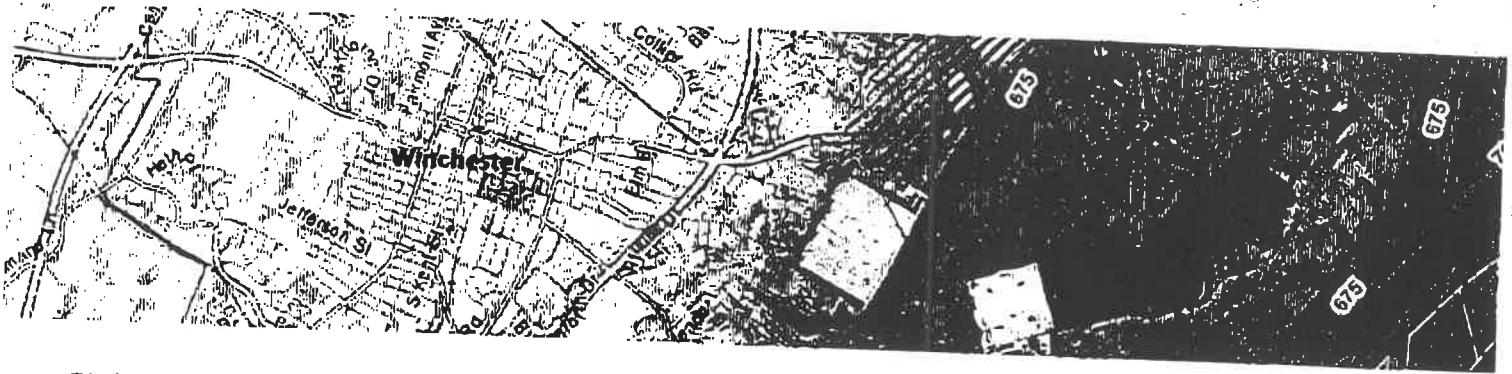
UAV Aerial Point Cloud

704 Foxcroft Ave.
Martinsburg, WV 25401



304.620.5111

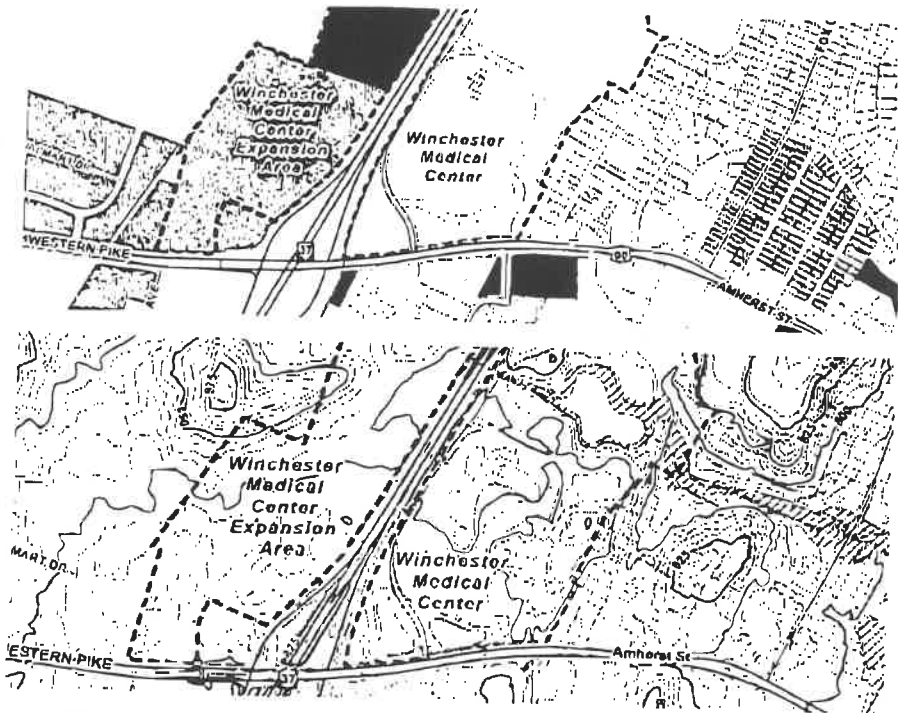
SERVICES | GIS



GIS

Greenway Engineering provides a range of GIS services, including Custom Mapping, Data Attribute Analysis, and Location Analysis. The power of GIS is in the information associated with a given location. Some say that "location, location, location" is what is important, while others say that "information is knowledge, and knowledge is power." GIS combines these two trains of thought to show where desired features are located, while symbolically or descriptively conveying information about the feature.

Custom Map Examples



Top: City and County Zoning Map, Bottom: Environmental Features Map

GIS Services

- **Custom Mapping**
 - Parcel Based
 - Aerial Based
 - U.S. Census Data
 - Location Maps
 - Transportation
 - Zoning/Planning
 - Environmental
 - Custom Sizing
 - Multiple Output Formats
- **Local, Regional, and National Wall Maps**
- **Historical Maps (replicas)**
- **Location Analysis**
- **Attribute Analysis**

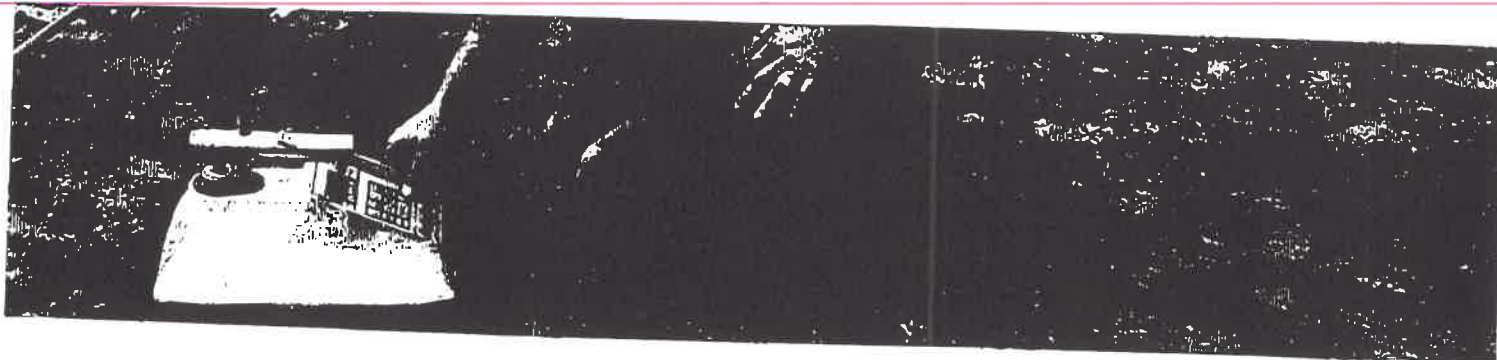
For information regarding additional services offered by our company, please refer to the Greenway Engineering Website at: GreenwayEng.com/gis

151 Windy Hill Lane
Winchester, VA 22602



540.662.4185

SERVICES | QC INSPECTIONS



QC Inspections

Greenway Engineering provides QC Inspection services for third-party inspections as well as construction monitoring and testing services in multiple State and County jurisdictions. Our inspectors are qualified to perform inspections and testing services on new and remodeling construction projects to meet the applicable standards.

Code Compliance Inspections

- Foundations – subgrade, dimensions, reinforcing steel
- Floor Slabs – subgrade, base, and reinforcing steel
- Retaining Walls – dimensions, reinforcing steel, and backfill with drainage system inspection
- Structural Steel – visual weld and bolt torque

Laboratory Testing

- Moisture Content
- Modified and Standard Proctor
- Natural Density and Moisture
- Concrete, Grout, and Mortar Compressive Strength Testing

Inspections Services

- Sub-grade Inspection
- Compaction Testing for Controlled Fill Placement
- Footing Inspection with Bearing Capacity Determination
- Floor Slab and Retaining Wall Inspection
- Reinforcing Steel Inspection
- Field Concrete Sampling and Testing including Coring and Windsor Probe Testing
- Structural Steel Inspection to include Visual Weld Inspection, Dye Penetrant, Mag Particle, Column Plumbness, Bolt Torque, Ultrasonic Weld Inspection, and Radiographic Weld Inspection
- VDOT and WVDOH Concrete and Asphalt Pavement Certified
- Fireproofing with Fire Stop Inspection
- NRMCA Plant and Ready Mix Truck Inspection Certified

For information regarding additional services offered by our company, please refer to the Greenway Engineering Website at: GreenwayEng.com/qc-inspections

704 Foxcroft Ave.
Martinsburg, WV 25401



304.620.5111