



The following documentation is an electronically-submitted vendor response to an advertised solicitation from the *West Virginia Purchasing Bulletin* within the Vendor Self-Service portal at ***wvOASIS.gov***. As part of the State of West Virginia's procurement process, and to maintain the transparency of the bid-opening process, this documentation submitted online is publicly posted by the West Virginia Purchasing Division at ***WVPurchasing.gov*** with any other vendor responses to this solicitation submitted to the Purchasing Division in hard copy format.

Header 1

List View

General Information [Contact](#) [Default Values](#) [Discount](#) [Document Information](#) [Clarification Request](#)

Procurement Folder: 1436133

Procurement Type: Central Purchase Order

Vendor ID:

Legal Name: MCKINLEY ARCHITECTURE & ENGINEERING INC

Alias/DBA:

Total Bid: \$0.00

Response Date:

Response Time:

Responded By User ID:

First Name:

Last Name:

Email:

Phone:

SO Doc Code: CEOI

SO Dept: 0603

SO Doc ID: ADJ2400000004

Published Date: 6/6/24

Close Date: 6/17/24

Close Time: 13:30

Status: Closed

Solicitation Description:

Total of Header Attachments: 1

Total of All Attachments: 1



Department of Administration
Purchasing Division
2019 Washington Street East
Post Office Box 50130
Charleston, WV 25305-0130

State of West Virginia
Solicitation Response

Proc Folder: 1436133
Solicitation Description: Huntington Tri-State Readiness Center Addition Design EOI
Proc Type: Central Purchase Order

| Solicitation Closes | Solicitation Response | Version |
|---------------------|------------------------------|---------|
| 2024-06-17 13:30 | SR 0603 ESR06142400000007825 | 1 |

VENDOR
000000206862
MCKINLEY ARCHITECTURE & ENGINEERING INC

Solicitation Number: CEOI 0603 ADJ2400000004
Total Bid: 0
Response Date: 2024-06-14
Response Time: 15:21:31
Comments:

FOR INFORMATION CONTACT THE BUYER
David H Pauline
304-558-0067
david.h.pauline@wv.gov

| | | |
|---------------------------|--------------|-------------|
| Vendor Signature X | FEIN# | DATE |
|---------------------------|--------------|-------------|

All offers subject to all terms and conditions contained in this solicitation

| Line | Comm Ln Desc | Qty | Unit Issue | Unit Price | Ln Total Or Contract Amount |
|------|--|-----|------------|------------|-----------------------------|
| 1 | Huntington Tri-State Readiness Center Addition Design EOI | | | | 0.00 |

| Comm Code | Manufacturer | Specification | Model # |
|-----------|--------------|---------------|---------|
| 81101508 | | | |

Commodity Line Comments:

Extended Description:

Provide professional architectural and engineering design services per the attached documentation.



CEOI 0603 ADJ2400000004

**WV Army National Guard
Huntington Tri-State Readiness
Center Addition Design EOI**



in association with:



BARBER & HOFFMAN, INC.
Consulting Engineers



TERRADON

14 June 2024

David H Pauline
Department of Administration, Purchasing Division
2019 Washington Street East
Charleston, WV 25305-0130

Dear Mr. Pauline and Members of the Selection Team,

McKinley Architecture and Engineering, American Geotech, Barber & Hoffman, and TERRADON (*McKinley Team*) have teamed up again, and are pleased to provide the West Virginia Army National Guard, Construction and Facilities Management Office with our proposal to provide architectural and engineering design services for an Addition to the Huntington Tri-State Armory. As you review this submission, we emphasize the following strengths of the McKinley Team with respect to your project:

McKinley Architecture and Engineering is a **full-service architectural and engineering firm** that has been providing design services since 1981. With offices in **Charleston**, Wheeling, and Martinsburg, WV and Pittsburgh, PA, we support a professional staff of **over 55 employees** which includes **Architects, Engineers, Project Managers, LEED Accredited Professionals, Interior Designer, an AIA Safety Assessment Program (SAP) Evaluator, Construction Contract Administrators**, and more. Our architects, engineers, and technicians are all in-house, creating optimum communication and collaboration, which results in outstanding service to our clients.

We are excited to announce that for the **2nd consecutive year** we are a member of **PSMJ's 2022 Circle of Excellence** as one of the **top-performing Architecture and Engineering firms in the nation**. We are also a winner of **PSMJ's 2023 A/E/C Employer of Choice Award**, the industry's premier recognition of firms that have mastered workforce retention and productivity by achieving the highest level of employee engagement. We've made the **Building Design + Construction's 2023 Giants 400 Report** as a Top Architecture/Engineering Firm. Furthermore, we are also pleased to announce that for the **4th consecutive year**, McKinley **nationally ranks** and appears on the **Inc. 5000 list** the **most prestigious ranking of the nation's fastest-growing private companies**.

We have experience **with various Public Safety architectural and engineering projects**, which you will see throughout our proposal. This diverse portfolio of emergency facilities experience ranges from **National Guard** projects, public safety facilities, emergency operations centers, E-911 communications centers, firehouses/fire stations, a state fire training academy, EMS / ambulance authorities, police departments, Sheriff's department, and State Police and among others.

From these experiences, we have gained the knowledge to realize the **specialized multi-purpose nature of these critical facilities**. Some of the specialized scope we have designed for includes: sensitivity to the people using the facility, safety and security, public access vs. control access, force protection, cost and energy efficiency, uninterruptible power supply (UPS) and backup power generators, compliance with current building codes, flexible environments and expandability of structure for growth in services and operations, room layouts and efficient use of space, and more.

American Geotech, Inc. is a **Minority Business Enterprise** that is **certified as a Socially and Economically Disadvantaged Business**. They are a consulting engineering firm specializing in the practice of **geotechnical, environmental and testing engineering** practicing for over 30 years. With its office centrally located in **Charleston, WV**, AGI can effectively assist in all phases of project design, development, and property utilization. AGI has also established a **soils testing laboratory in its Charleston office**, fully equipped for the performance of soils testing services in accordance with published standards. McKinley has utilized AGI's engineering expertise on multiple projects, including **several governmental projects**, including Building 55: WV State Office Complex (LEED Certified), West Virginia State Police detachments, and much more.

Barber & Hoffman, our **Structural Engineering consultant**, has been providing engineering services to clients since 1934. B&H is rich with a versatile staff of registered **Professional Engineers**, EI's, technicians, as well as **LEED Accredited Professionals**. They have undertaken many special projects that require critical thinking and innovative solutions, and has risen to the occasion of meeting their clients' special needs. They have worked on **National Guard projects**. In addition, B&H has worked on several projects with McKinley.

TERRADON Corporation will be utilized for **civil/site engineering and land development**. Since 1989, TERRADON staff have provided a wealth of engineering solutions blanketing West Virginia with successful projects. The TERRADON staff includes **engineers, landscape architects, surveyors, scientists, and LEED Accredited Professionals**. TERRADON Corporation maintains leading-edge staff in five locations, including 3 in West Virginia: Nitro/Poca, Lewisburg, and Fayetteville. TERRADON is a **certified Women's Business Enterprise** as defined by the Women's Business Enterprise National Council, and is the largest woman-owned engineering firm in West Virginia. McKinley and TERRADON have worked on several projects together.

In closing, one of the more exciting aspects of our job is **listening to you**, our client, in how you envision this project, and transforming your ideas into realities. This can only be accomplished by effectively working together with you. Most of our clients are repeat, which is a good indication of the services we provide. The main reason we have been able to maintain this relationship is because **we listen to their needs, and then deliver**. We encourage you to speak with our references because we feel this is the best way that our abilities can be conveyed to you.

We love what we do, so we care about the results you get. We are ready to begin **immediately** and can work to your schedule to get this project designed and constructed. Thank you for reviewing our submission and considering the McKinley Team for your project. We are very excited about the possibility of working with the West Virginia Army National Guard again.

Sincerely,



Ernest Dellatorre
Director of Business Development
McKinley Architecture and Engineering
(304) 830-5359
edellatorre@mckinleydelivers.com



FIRM PROFILE

HISTORY

Founded in 1981, McKinley Architecture and Engineering is a multi-discipline full service A/E firm of 55 employees offering comprehensive professional services in architecture, mechanical-electrical-plumbing engineering, project management, interior design, safety evaluation, planning, and construction contract administration.

We have a broad range of skill and experience for projects involving emergency response facilities, public safety, governmental, municipal, wellness and health care, training, sustainable and energy efficiency, commercial, education, and industrial markets.

McKinley has made the 2020, 2021, 2022, and 2023 Inc. 5000 lists of the nation's fastest-growing private companies.

We qualified for PSMJ's 2022 and 2023 Circle of Excellence as one of the top-performing Architecture and Engineering firms in the nation, and PSMJ's 2023 A/E/C Employer of Choice Award.

We also made the Building Design + Construction's 2023 Giants 400 Report as a Top A/E Firm.



OFFICES

Charleston

129 Summers Street, Suite 201
Charleston, WV 25301 • (304) 340-4267

Wheeling

Fort Henry Building
1324 Chapline Street, Suite 400
Wheeling, WV 26003 • (304) 233-0140

Pittsburgh

5000 Stonewood Drive, Suite 220
Wexford, PA 15090 • (724) 719-6975

Martinsburg

300 Foxcroft Avenue, Suite 306
Martinsburg, WV 25401 • (681) 247-5618

CONTACTS

Ernest Dellatorre

Director of Business Development
edellatorre@mckinleydelivers.com
(304) 830-5359

Thomas R. Worlledge, AIA, LEED AP BD+C, REFP

Charleston Office Manager / Senior Architect
tworlledge@mckinleydelivers.com
(304) 830-5326

SERVICES

- Architecture
- Engineering
- Architectural/Engineering Design
- Project Management
- Interior Design
- Sustainable Design
- Historic Preservation
- Construction Contract Administration
- SAP Safety Evaluation
- Learning Environment Planning
- Educational Facility Planning

ASSOCIATIONS

McKinley Architecture and Engineering is a member of the following organizations:

A4LE (Formerly CEFPI), ACI International, AIA, ASCE, ASHRAE, ASPE, AWI, BOCA, NCARB, NFPA, WVEDC, and more.

PROJECT MANAGEMENT

Our Project Managers are skilled professionals in the following areas:

Defining scope and the initial planning of a project are the foundation of a successful project. Project Managers collaborate with clients, principal architects, and design teams to understand project requirements. They are responsible for Scope Management. Throughout the project, they continuously assess and refine the scope, ensuring it remains aligned with the project's goals. They address any changes or deviations promptly with all stakeholders.

Project Managers create detailed financial plans, estimating costs for materials, labor, and other project elements. They track expenses, manage budgets, and allocate resources efficiently. Keeping the project within budget is critical and an ongoing focus of the Project Manager. Project Managers monitor expenses, negotiate contracts, and make informed decisions to avoid cost overruns.

They develop comprehensive project schedules, breaking down tasks and milestones. This involves coordinating with design teams, consultants, and contractors. Project Managers ensure that each phase progresses according to the timeline. They address delays promptly, adjusting schedules as needed.

Project Managers foster collaboration, resolve conflicts, and ensure everyone works cohesively. Architects collaborate with various consultants (structural engineers, MEP specialists, etc.). Project Managers facilitate effective communication between these experts, ensuring seamless integration of their contributions.

In summary, their multifaceted role combines creativity, leadership, and meticulous planning to transform architectural visions into reality.



ARCHITECTURE / ENGINEERING

At McKinley Architecture and Engineering, we pride ourselves on being the best. Clients choose us for their design projects because they want to have the confidence that comes from working with an industry leader. They trust McKinley Architecture and Engineering to get projects done right, within budget and on schedule. That's because the firm's highly experienced, diversified staff is equipped with the latest technology and is on the job from start to finish.

Architectural design today is meeting of minds. At McKinley Architecture and Engineering, a talented range of professionals work together to deliver projects on time, on budget, and with a high degree of personal attention. We believe that design is an evolutionary process where client and architect learn from each other through frequent communication. Understanding budgets, schedules, goals and ideals, we pursue the optimum balance of these forces in the design of buildings.

McKinley Architecture and Engineering has also provided **engineering design** and **contract administration services** for numerous clients as well as other design firms. Our engineering staff has had special opportunities and experience related to various typical and atypical building types. Our engineering department has designed the first Chilled Beam HVAC System in West Virginia, a Variable Refrigerant Volume / Air-Cooled DX Multizone System with a cost reduction of 30% compared to existing mechanisms, and a building with all interior and exterior LED lighting which came in for the same cost as conventional lighting, just to name a few. We have a well rounded range of experiences and are not afraid to take on new challenges.

CONSTRUCTION CONTRACT ADMINISTRATION



- Construction Contract Administrator Involved from the Beginning of the Design Phase
- Observe the Construction Progress
- Liaison between the Owner, Contractor, and Architects/Engineers
- Responsible for All Construction Progress Meetings and Minutes
- Monitor the Construction Schedule
- Ensure that the Contractor is Following the Construction Documents
- Verify Pay Application and Change Orders
- Typically On-Site Once Every Two Weeks

Our **Construction Contract Administrators** have an extra responsibility than what most firms' Construction Administrators have; our CAs are a part of the design process from **Day 1** (they are not thrown into the project only when construction starts; they are here from the beginning), so they know the ins-and-outs of the project.

Our CAs have an important role as being the **liaison between the Owner, Contractor, and Architect**.

The primary objective of the Construction Contract Administration services is to ensure completion of work the way the client wants it - **as scheduled and as budgeted**.

Our CAs evaluate the quality of the work to verify that it meets the level required by clients; in addition, they monitor the contractor's progress to ensure that they are following the Construction Documents. They observe the construction progress, are responsible for all construction meetings and minutes, and they verify pay application and change orders.

The Construction Contract Administrator is typically on-site once every two weeks, but we can provide additional on-site representation if requested.

SUSTAINABLE DESIGN

Buildings designed today will need to meet the demands of the future. McKinley is positioned to identify and meet the demands. This approach helps to retain the buildings' long-term profitability. McKinley approaches ecological design from a business perspective, offering proactive solutions to complex problems such as indoor air quality, energy efficiency, resource depletion, and water quality.

With commercial, governmental, office, and educational project experience, the McKinley team can work alongside local designers to provide sustainable design and construction guidance, offering full architectural design services and guided design workshops on sustainable design issues.

Our Philosophy is to provide our clients with experienced leadership and innovative design expertise to accomplish the goals of the project. Function, economics and versatility, as well as, strong aesthetic appeal which are crucial elements in the design process. McKinley believes that enhancement of the physical environment adds significantly to the enjoyment of life. We have dedicated our professional skills to attain these goals.

The Leadership in Energy and Environmental Design (LEED) Green Building Rating System developed by the U.S. Green Building Council is the nationally accepted standard for the design, construction, and operation of high performance green buildings.

McKinley was the first organization in West Virginia to join the USGBC. We have several LEED Accredited Professionals on staff, including three LEED APs who are specialized in Building Design & Construction. These professionals, along with skilled architectural/

engineering team, can efficiently and cost effectively achieve certification under this standard. McKinley can guide you through the process in order to develop sustainability goals specific to your project.

McKinley was presented with the 2019 Governor's Award for Leadership in Buildings Energy Efficiency at the Innovation & Entrepreneurship Day. We were recognized for our commitment to sustainability and energy efficiency in the design of schools, multi-use facilities, office buildings, and a wide variety of commercial, industrial, government, and historical structures.

Our sustainable designs have also won two U.S. Department of Education Green Ribbon Schools, a Gold Medal Green Building Award by Building of America, WV Department of Environmental Protection's Clean Energy Environmental Award, and two Black Bear Awards for the Highest Achievement for the WV Sustainable Schools program, among other.

We also have a project that is Collaborative for High Performance School (CHPS) Registered; the United States' first green building rating program designed for schools.

McKinley has designed four projects listed on the U.S. Environmental Protection Agency's ENERGY STAR program: Building 55: West Virginia State Office Building in Logan, Hilltop Elementary School, Cameron Middle/High School, and Johnson Elementary School. To receive an ENERGY STAR, you need to perform in the top 25% of the most energy efficient projects in the program. Building 55: West Virginia State Office Building is one of the most energy efficient buildings in the State and is in the Top 5% of all Energy Star rated buildings in the country.



INTERIOR DESIGN

Interior design services begin with a strategy session to determine the owner's project requirements, timetable, and budget. The interviews will include analyzing space requirements, operating procedures, communication relationships, and future needs. An inventory of existing conditions is used to develop accurate drawings and plans.

The current ADA and building codes will be applied to the developed plans for wayfinding (signage, directories, fire escape plan), furnishings, and finishes. Attention to budget and maintenance is given in relationship to owner needs.

Construction documents required to detail the project include schedules, elevations, plans, presentation boards, and specifications. To maintain coordination, the follow-up contract administration consists of a submittal review, post-construction evaluation, and coordination of FF&E contracts when applicable.

We can also design for energy efficiency and sustainability. For interior design & FF&E, specific color and texture selections on the floors, walls, ceilings, and furnishings can enhance the lighting in the space, can create a comfortable atmosphere, and can incorporate a color palette with fresh accents to offer interest and contrast.

We have utilized wall paint with very low volatile organic compounds (VOCs), which keeps the air we breathe cleaner, and contains an anti-microbial that inhibits the growth of mold and mildew. We have specified carpet tile which minimizes waste, has 35% recycled content, and is Green Label Certified, meaning it meets stringent indoor air quality requirements.



American Geotech, Inc. (AGI) is a consulting engineering firm specializing in the practice of geotechnical, environmental and testing engineering. The ownership of AGI represents over 40 years of combined engineering experience including completion of geotechnical testing projects in West Virginia, Virginia, Ohio, and Kentucky. American Geotech, Inc. staff includes six (6) full time personnel and four (4) part time personnel. In our professional staff there are one geotechnical engineers, one environmental scientist, seven soil technician, and one secretary.

With its office centrally located in Charleston, West Virginia, AGI can effectively assist owners, architects, planners, design engineers, and contractors in all phases of project design, development, and property utilization throughout the Mid-Atlantic region of the United States. Utilizing proven technology and experience, AGI can work closely with its clients to initiate and complete a variety of engineering projects in a professional and effective manner.

AGI has established a full service for soils testing laboratory in its Charleston office. The laboratory is fully equipped for the performance of soils and concrete testing services in accordance with standards published by American Standard Testing Materials (ASTM) and American Association of State Highway and Transportation Officials (AASHTO).

Geotechnical Engineering Services

Standard geotechnical engineering services which AGI can contribute to a project includes:

- Site exploration and recommendation for Site Development
- Analysis and design recommendations for both shallow and deep foundation systems
- Exploration, analysis, and design recommendations for highways, airport construction and bridge foundation
- Exploration and analysis of utility line installation and construction

Material Testing Engineering Services

Standard soils testing services which AGI can contribute to a project include:

- Classification testing of Soils and Rock
- Strength testing of soils including Unconfined Compression, Triaxial and Direct Shear Testing
- Compressibility and Consolidation Testing of Soils
- Standard and Modified Proctor Tests for Moisture-Density relationships.
- Concrete Testing.
- Steel and Weld Inspection.
- Block and Bricks Testing
- Fire-proofing Thickness
- Grout and Mortar Testing



FIRM OVERVIEW



FOUNDED
1934

HISTORY

Barber & Hoffman, Inc. (B&H) is a prominent **structural engineering** firm serving the Midwest and Mid-Atlantic regions since 1934. Founded in Cleveland by C. Merrill Barber, operations have expanded with firm growth within offices in Pittsburgh and Columbus. This vision coupled with the ongoing efforts of the firm leadership and dedicated staff has created a remarkable legacy of notable public and private landmarks.

B&H serves design and construction professionals, medical, commercial, and educational institutions, building owners and managers, government agencies, contractors, fabricators, and developers. Versatile professional engineers, designers, and technicians couple their experience and knowledge with the latest design techniques, materials technology, and engineering software to produce efficient and effective design solutions.

B&H combines its extensive experience with technical design/drawing software to develop creative and effective solutions. Leadership believes successful project management is accomplished through the collaboration and targeted client communication.

B&H is a professional corporation with various small business enterprise (SBE) certifications.

PERSONNEL

4 Principals
28 Engineers (16 Registered)
3 LEED AP Personnel
6 Technicians

CAPABILITIES

Facades
New Structures
Existing Structures
Parking Garages
Building Assessments
Restoration
Forensic

MARKET SECTORS

Civic
Municipal
Healthcare
Education
Commercial
Institutional
Housing
Recreation
Parking Garages
Design-Build

RELEVANT EXPERIENCE

BLIND AND VISION REHABILITATION SERVICES

Building Renovations

Pittsburgh, PA

BUTLER COUNTY COURTHOUSE

Structural Evaluation of Interior and Exterior Wall Cracks

Butler, PA

BUTLER COUNTY GOVERNMENT CENTER

Annex Addition

Moon Township, PA

PA NATIONAL GUARD

Combined Support Maintenance Shop

Moon Township, PA

OHIO ARMY NATIONAL GUARD ARMORY

Brook Park Building Interior and Exterior Renovations

Brook Park, OH

UNITED STATES ARMY CORPS OF ENGINEERS

Kirtland AFB Building 201

Albuquerque, NM

MERCER COUNTY

Government Office Building Condition Assessment

Mercer, PA

VENANGO COUNTY

Business Innovation Center

Oil City, PA

CITYNET CENTER

The Bridge Sports Complex

Bridgeport, WV

FAIRMONT FEDERAL CREDIT UNION

Drive Through Bank

Fairmont, WV

HARRISON COUNTY SCHOOLS

Additions and Renovations

Bridgeport, WV

OHIO COUNTY SCHOOLS

Additions and Renovations

Wheeling, WV

WEST VIRGINIA UNIVERSITY

Advanced Engineering Building

Morgantown, WV

GLENVILLE STATE COLLEGE

Science Building Renovations

Glenville, WV

LOUIS A JOHNSON VA MEDICAL CENTER

Addition and Renovations

Clarksburg, WV

STATE REGISTRATIONS

Pennsylvania

Ohio
District of Columbia
Florida
Illinois
Indiana
Kentucky
Maryland
Michigan
New Jersey
New York
North Carolina
Missouri
Virginia
West Virginia
Texas



**Butler County Government Center
Annex Addition**
Butler, PA

barberhoffman.com



FOUNDED: 1989

EMPLOYEES: 90

LOCATIONS:

Poca, WV
Lewisburg, WV
Fayetteville, WV
Washington, PA
Salem, VA

SERVICES:

Civil Engineering
Land Planning & Design
Survey & Mapping
Geotechnical Engineering
Transportation Engineering
Structural Engineering
Construction Services
Environmental Consulting

TERRADON Corporation offers a multi-faceted approach to design engineering and consulting services. For more than 30 years TERRADON staff has provided a wealth of engineering solutions on successful projects. The company built its reputation on expert personnel and quality, time-sensitive service. Those same founding principles hold true today.

The firm has been recognized through numerous awards from professional organizations and agencies including the American Society of Civil Engineers, State Highway Departments, the Department of Environmental Protection and the American Institute of Architects.

TERRADON's diverse team of professionals work together on projects to offer a wide range of services in house to keep projects centrally focused. By providing this range of services, TERRADON is able to work completely as a team to offer clients the most rewarding design.

TERRADON's corporate culture promotes innovation and progressive thinking. Project leaders strive to sustain customers through a wide-range of engineering offerings. TERRADON employees understand the purpose behind their services and work to cultivate lasting relationships with clients through honest, hard work.



TERRADON is the largest, woman-owned engineering firm in West Virginia. TERRADON is a certified Women's Business Enterprise as defined by the Women's Business Enterprise National Council and the National Women Business Owners Corporation.



Taking an undeveloped piece of land and transforming it to your vision requires creativity, an attention to detail, and the ability to stay focused through a complex process. Working alongside TERRADON, a team that seeks to understand and align solutions with client vision, project owners gain a partner that is experienced and capable of dealing with the obstacles that can arise. TERRADON produces plans, permits, and construction details to realize owners' vision.

At TERRADON, land development is one of our foundational services, and is often at the center of projects that include other engineering services. Experienced team members, utilizing modern technology and evolving procedures, help clients find innovative solutions to strengthen their project.

Through clear, constant communication with the client and a level of transparency unmatched in the industry, our project managers work to identify goals and develop answers. From cost models to simulation tools, we provide comprehensive analysis of situations, and deliver realistic schedules and estimates to meet client goals.

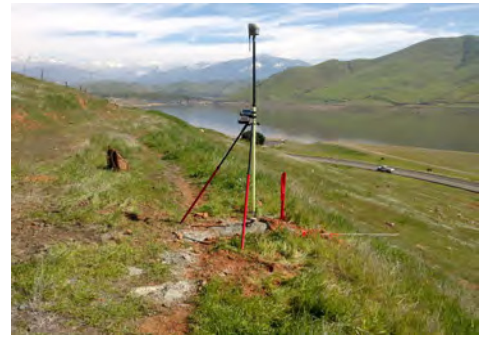
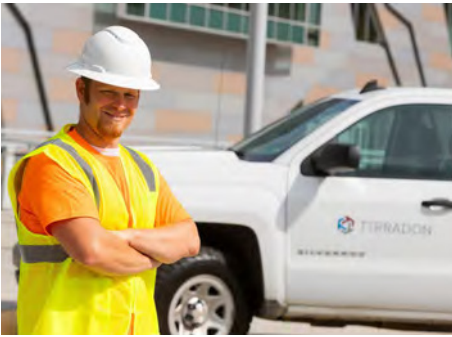
Supported by a large, highly-qualified team of engineers, landscape architects, and CAD designers, our land development team has extensive experience with both private and public entities. Such a depth of experience allows us to tackle complex projects that are critical to a client's time and budget needs. It's what has helped us develop extended relationships with clients, and has earned us regular referrals.



*TERRADON maintains
LEED accredited
professionals on staff.*

Services

- School and Institutional Site Development
- Master Planning
- Site Feasibility Studies
- Schematic Design
- Layout Plans
- Grading Plans
- Stormwater Management Plans
- Erosion Control Plans
- Planting Plans
- Presentation Drawings/ Renderings
- Graphic Design
- Construction Observation
- Commercial Site Development
- Industrial Site Development
- Residential & Urban Site Development
- Rural Site Development
- Athletic Facility Development
- Low Impact Sustainable Development
- Parks and Recreational Site Development



Survey and mapping serves as the foundation of a successful design project. The data from these processes provides the framework for site planning, sets out boundaries to work within, and helps owners to determine the constructability of a project.

Survey and mapping serves as the foundation of a successful design project. The data from these processes provides the framework for site planning, sets out boundaries to work within, and helps owners to determine the constructability of a project. Utilizing state-of-the-art geospatial technology, our experienced field survey crews and licensed surveyors are efficient and accurate, priding themselves in precision data collection and informative outputs. Our tailored survey and mapping solutions demonstrates that our team is ready to tackle the needs of clients across a variety of industries, from roadway and government to commercial and residential clients.

With decades of experience, our exceptional survey and mapping teams aim to provide transparency and open communication throughout the process – both the client and our full project teams receive constant updates. This commitment to communication allows for informed decisions, providing the ability to adapt or modify project designs as needed across ever-changing site environments. At TERRADON, our survey and mapping team ensures that every project is efficient ethical and environmentally sound. This has made TERRADON the premier surveying and mapping firm in the region, and the company project owners turn to first.

SERVICES

- Boundary Surveys
- High Order Control Surveys
- Aerial Mapping Control Surveys
- ALTA/NSPS Surveys
- As-built Surveys
- Deformation and Monitoring Surveys
- Above Ground and Underground Utility Surveys
- Construction Staking
- Hydrographic Surveys
- Ground Penetrating Radar (GPR)
- Geodetic Surveys
- 3-D Terrestrial Scanning
- FEMA Flood Certificates, LOMA, LOMR, CLOMR, and CLOMR-F
- Design Level Base Mapping
- Topographic and Planimetric Survey Mapping
- Transportation Corridor Mapping
- Right-of-Way Mapping
- Highway Right of Way Plan Development
- Subsurface Utility Mapping
- Major and Minor Subdivision Plans
- GIS Mapping
- Drone 3-D Mapping
- Photogrammetric Mapping
- Dam Instrumentation Surveys
- FEMA Flood Certificates, LOMA, LOMR, CLOMR and CLOMR-F



T.J. THARP CSM

ASSOCIATE PROJECT MANAGER

Mr. Tharp is an associate project manager with many years of experience in managing large-scale construction projects. He has a proven track record directing project-wide operations administering multi-million dollar budgets, negotiating contracts, controlling expenses, and boosting efficiency and productivity. TJ will be responsible for the coordination and the completion of your project on time, within budget, and within scope. He will ensure instruments of service are meeting contractual requirements and he is key in managing client relationships and expectations.



EDUCATION

University of Phoenix
B.S. Business Administration –
Certified in Project Management

PROFESSIONAL AFFILIATIONS & REGISTRATIONS

Certified Project Manager in the
LEAN Process
Certified ScrumMaster

MILITARY SERVICE AND AWARDS

United States Marine Corps 2004-
2008
Honorable Discharge
Purple Heart Recipient
Meritorious promotions, Letters
of commendation, Letters of
recognition, Overseas deployment
to Iraq, Combat Veteran, Global War
on Terrorism Award, Good Conduct
Award, Navy and Marine Corps
Commendation Medal

YEARS OF EXPERIENCE

20 years

SELECTED EXPERIENCE

**Ohio Valley Regional
Transportation Authority**
Wheeling, WV
OVRTA roofing & exterior
rehabilitation

Voto Sales
Steubenville, OH
Voto Sales

Friends of Wheeling
Wheeling, WV
722-724 Main Street renovations

Jefferson County Commission
Steubenville, OH
McCullough Children's Home

Fort Henry Building
Wheeling, WV
Fourth Floor office build-out

City of Glen Dale
Glen Dale, WV
Glen Dale Pool

Vineyard Church
Wheeling, WV
Vineyard Children's Center & Cafe

**Barnesville Exempted Village
School District**
Barnesville, OH
Barnesville High School Football
Field

**Bridgeport Exempted Village
School District**
Bridgeport, OH
Bridgeport High School roof

Clay County Schools
Clay, WV
Clay Elementary School HVAC
renovation

Mason County Schools
County-Wide, Mason County, WV
County-Wide Safety/Security
Entrances

Ohio County Schools
Wheeling, WV
Wheeling Middle School
renovations

Steubenville City Schools
Steubenville, OH
Steubenville High School
Commons upgrade

Wayne County Schools
Kenova, WV
Buffalo School additions and
renovations

Wayne County Schools
Wayne, WV
Wayne Elementary School
classroom additions

Wood County Schools
Parkersburg, WV
North Parkersburg Elementary
School

Wood County Schools
Parkersburg, WV
New Lubeck Elementary School

Wayne County Schools
Vienna, WV
New Vienna Elementary School

Wyoming County Schools
Mullens, WV
Mullens PK-8 School

Wyoming County Schools
Oceana, WV
Oceana Middle School SAS



THOMAS R. WORLLEDGE

AIA, LEED AP BD+C, REFP

SENIOR ARCHITECT

A skilled Architect with over 40 years of experience, who has been the former President of the WV chapter of AIA, has received State and National design awards, and placed in National and Global design competitions. Unlike many architects who are new to green building and alternate energy, Thom started his career designing and building alternate energy systems, and was the first LEED Accredited Professional in West Virginia! As a recognized sustainable design expert, he has 2 LEED Certified projects, multiple LEED Registered projects, has articles published in National trade publications, was a featured speaker at multiple National conferences, and much more.



EDUCATION

Virginia Polytechnic Institute & State University
Master of Architecture

Fairmont State College, School of Technology
B.S. Architectural Eng. Tech.

PROFESSIONAL AFFILIATIONS & REGISTRATIONS

Registered Architect in:
West Virginia
Ohio
Pennsylvania
Tennessee
Virginia

National Board Certification:
NCARB #48600

President:
West Virginia Society of Architects

Member:
The American Institute of Architects
US Green Building Council
Sustainable Building Industries Council
Recognized Educational Facility Professional

Founder & Chairman of the Board:
US Green Building Council's WV Chapter

Former voting member:
ASHRAE 90.1 Int'l Energy Code Committee

YEARS OF EXPERIENCE

40 years

SELECTED EXPERIENCE

West Virginia State Police

Logan, WV
New Logan Detachment / Back-Up Data Center for the WVSP Headquarters

West Virginia State Police

Dunbar, WV
West Virginia State Police Academy - Renovations to Buildings A, B, and C

West Virginia State Police

Dunbar, WV
West Virginia State Police Academy - New Firing Range

West Virginia State Police

Dunbar, WV
West Virginia State Police Academy - New Multi-Purpose Training and Wellness Building

West Virginia Department of Health & Human Resources

Wheeling, WV
Ohio County Office Building fit-out / renovations

State of West Virginia

Logan, WV
Building 55: WV State Office Complex
LEED Certified
ENERGY STAR Rating of 91

Nicholas County Division of Homeland Security

Summersville, WV
E-911 and Emergency Management Services Center

West Virginia University

Morgantown, WV
University Police Building renovations

Veterans Affairs Medical Centers

State-Wide, WV
Multiple VAMCs around WV

Veterans Affairs Medical Centers

State-Wide, PA
Multiple VAMCs around PA

Cabell County Schools

Milton, WV
New Milton Elementary School

Fayette County Schools

Meadow Bridge, WV
New Meadow Bridge PK-12 School and school-based health clinic

Fayette County Schools

Oak Hill, WV
Oak Hill High School gymnasium renovations

Fayette County Schools

County-Wide, Fayette County, WV
Windows & Doors Replacements

Harrison County Schools

Bridgeport, WV
New Hilltop Elementary School
ENERGY STAR Rating of 90
NCWV Media's Public Project of the Year
Collaborative for High Performance School registered

Marshall County Schools

Sherrard, WV
New Hilltop Elementary School
LEED Certified
ENERGY STAR Rating of 86
Won multiple State and National Awards & Recognitions



JEREMIAH HATFIELD

AIA, NCARB

ARCHITECT

Mr. Hatfield values clients and enjoys assisting them with their projects at all levels of design and construction and with all building types, including educational, governmental, commercial, offices, hospitality, and residential projects. Jeremiah has completed InDeed Assessments, which provides skills tests that are not indicative of a license or certification, or continued development in any professional field. In these tests, he ranked Highly Proficient in "Attention to Detail" (identifying differences in materials, following instructions, and detecting details among distracting information) as well as "Following Directions" (following multi-step instructions), which are an asset to an Architect.



EDUCATION

Louisiana State University
Bachelor of Architecture

PROFESSIONAL AFFILIATIONS & REGISTRATIONS

Registered Architect in:
West Virginia
Kentucky
Michigan
Virginia

National Board Certification

YEARS OF EXPERIENCE

24 years

SELECTED EXPERIENCE

State of West Virginia

Charleston, WV
WV Lottery Building roof

West Virginia Department of Transportation, Division of Highways

Huntington, WV
District 2 Headquarters

Fort Henry Building

Wheeling, WV
Office build-out

Cabell County Schools

Milton, WV
New Milton Elementary School

Fayette County Schools

Oak Hill, WV
Fayette Institute of Technology renovations, including roof

Fayette County Schools

Meadow Bridge, WV
New Meadow Bridge PK-12 School

Fayette County Schools

Hico, WV
Midland Trail High School gym renovations

Fayette County Schools

Oak Hill, WV
Oak Hill High School gym renovations, including roof

Fayette County Schools

Smithers, WV
Valley PK-8 School renovations

Fayette County Schools

County-Wide Windows & Doors replacements

Fayette County Schools

6 Outdoor Classrooms County-Wide

Hancock County Schools

Weirton, WV
Weir Middle School addition

Wayne County Schools

Wayne, WV
Buffalo Elementary School addition and renovations

Wayne County Schools

Fort Gay, WV
Tolsia High School Gym

Wayne County Schools

Wayne, WV
Wayne Elementary School classroom addition

Wayne County Schools

Wayne, WV
Wayne High School Vo-Ag Metal Building

Wayne County Schools

County-Wide Windows replacements

Wyoming County Schools

Oceana, WV
Oceana Middle School security upgrades

Wyoming County Schools

Clear Fork, WV
Westside High School Practice Facility

Wyoming County Schools

New Richmond, WV
Wyoming County East High School field renovations



ALY MITTON

INTERIOR DESIGNER

Mrs. Mitton is an Interior Designer who believes in creating functional yet eye-catching designs that elevate the interior space. She strives for the interior experience to be healthy, safe, and inviting as well as being ADA compliant and ergonomically sound. She has experience designing a broad variety of interior projects including education, hospitality, commercial offices, residential homes, and retail spaces. Her skills include AutoCAD, Revit, the Adobe Suite, FF&E selections, sketching and hand rendering.



EDUCATION

Utah State University
Caine College of the Arts
Bachelor's of Interior Architecture
and Design
Minors in Art & Landscape
Architecture

PROFESSIONAL AFFILIATIONS & REGISTRATIONS

LEED Green Associate
Former Member:
ASID Student Chapter
IIDA Student Chapter
USGBC Student Chapter

YEARS OF EXPERIENCE

7 years

SELECTED EXPERIENCE

Cabell County Schools

Milton, WV
New Milton Elementary School

Berkeley County School

Hedgesville, WV
Hedgesville PK School

Berkeley County Schools

Martinsburg, WV
Martinsburg High School

Berkeley County School

Gerrardstown, WV
Mountain Ridge Elementary
School

Berkeley County Schools

Hedgesville, WV
Tomahawk Intermediate School

City of Weirton

Weirton, WV
Park Drive/Three Springs Drive
development

McKinley Architecture & Engineering

Mars, PA
North Pittsburgh Corporate Office

Pura*

Pleasant Grove, UT
Pura Corporate Headquarters

Mixhers*

Springville, UT
Mixhers Headquarters

Driven Auto Sales*

Springville, UT
Driven Auto Sales Car Dealership

Tamarak Capital*

Saint George, UT
Pura Vista Residence (Parade of
Homes)

Cache County*

Logan, UT
Cache County Children's Justice
Center

Madbrook Donut Company*

Salt Lake City, UT
Madbrook Donut Company
Headquarters

Capita Financial Network*

Salt Lake City, UT
Capita Financial Network
Headquarters

Orgill Family*

Dear Valley, UT
Orgill Residence

Walia Family*

Washington
Walia Residence

**previous work experience with a firm other than McKinley Architecture and Engineering*



TIM E. MIZER

PE, RA, QCXP

DIRECTOR OF ENGINEERING SERVICES

Mr. Mizer is a very talented and unique professional being both a Professional Engineer and Registered Architect, which has provided him with a total understanding of the engineering components and the process necessary for integrating architectural design and building systems. Furthermore, has been formally trained to fully understand how integrated HVAC systems function and how systems interface with others to run your building efficiently. As the Director of Engineering Services, his presence is a key to the design procedures required to coordinate the functionality of the engineering systems into the aesthetics of a building space. He joined McKinley in 1995.



EDUCATION

Kansas State University
B.S. Architectural Engineering

University of Cincinnati
Architecture

PROFESSIONAL AFFILIATIONS & REGISTRATIONS

Registered Engineering in:
Ohio
West Virginia

Registered Architect in:
Ohio

Qualified Commissioning Process
Provider

YEARS OF EXPERIENCE

40 years

SELECTED EXPERIENCE

West Virginia Army National Guard

Kingwood, WV
Mountaineer Challenge Academy

West Virginia Army National Guard

Kingwood, WV
Multi-Purpose Building

West Virginia Army National Guard

Parkersburg, WV
AASF#1 Maintenance Building and Hangar HVAC

West Virginia Army National Guard

Parkersburg, WV
SPCC Certifications

West Virginia Army National Guard

State-Wide, WV
SPCC 5 Year Review Certifications and Amendments

West Virginia Army National Guard

State-Wide, WV
SPCC Amendments and Environmental Equivalence Certifications

West Virginia State Police

Logan, WV
New Logan Detachment / Back-Up Data Center for the WVSP Headquarters

West Virginia State Police

Dunbar, WV
West Virginia State Police Academy - New Multi-Purpose Training and Wellness Building

State of West Virginia

Logan, WV
Building 55: WV State Office Complex
LEED Certified
ENERGY STAR Rating of 91

West Virginia Department of Health & Human Resources

Wheeling, WV
Ohio County Office Building fit-out / renovations

West Virginia University's Fire Extension Services

Jackson's Mill, WV
New State Fire Training Academy

West Virginia University

Morgantown, WV
University Police Building renovations

City of Moundsville

Moundsville, WV
New Municipal Public Safety Bldg

City of Wheeling

Wheeling, WV
Wheeling Island Fire Station

City of Cadiz

Cadiz, OH
Cadiz Fire Department

Raleigh County Emergency Services Authority

Beaver, WV
911 and Emergency Operations Center HVAC

Cabell County Schools

Milton, WV
New Milton Elementary School



KURT SCHEER

PE, LEED AP

SENIOR MECHANICAL ENGINEER

Kurt is a Mechanical Engineer with 20 years of experience in the architectural/engineering industry with a focus on mechanical systems design. In addition, he has overseen electrical, plumbing, and fire protection engineering for all his projects for 15 years. Market sectors such as hospitality, higher education, and commercial office are areas where he has significant experience. Additionally, Kurt has experience with LEED Certified projects and energy modeling.



EDUCATION

Penn State University
B.S. Architectural Engineering

PROFESSIONAL AFFILIATIONS & REGISTRATIONS

Registered Engineering in:
Pennsylvania
West Virginia

Member:
US Green Building Council

ASHRAE

ASPE

YEARS OF EXPERIENCE

22 years

SELECTED EXPERIENCE

City of Moundsville

Moundsville, WV
Municipal/Public Safety Building

City of Cadiz

Cadiz, OH
Cadiz Fire Department

Nicholas County Division of Homeland Security

Summersville, WV
E-911 and Emergency Management Services Center

Brooke County Commission

Wellsburg, WV
Judicial Center & Historic Courthouse

Tyler County Commission

Middlebourne, WV
Judicial Building

Fort Henry Building

Wheeling, WV
Fourth Floor office build-out

City of Weirton

Weirton, WV
Park Drive/Three Springs Drive development and streetscape

YWCA

Wheeling, WV
Various renovations

Glenville State University

Glenville, WV
School of Health Sciences

Cabell County Schools

Milton, WV
New Milton Elementary School

Fayette County Schools

Oak Hill, WV
Fayette Institute of Technology renovations

Fayette County Schools

Meadow Bridge, WV
New Meadow Bridge PK-12 School and school-based health clinic

Fayette County Schools

Oak Hill, WV
Oak Hill High School gymnasium renovations

Fayette County Schools

Smithers, WV
Valley PreK-8 School renovations

Harrison County Schools

Clarksburg, WV
Gore Elementary School build-out renovation/addition

Harrison County Schools

Lost Creek, WV
New Lost Creek Elementary School

Wirt County Schools

ESSERF Projects

Glenville State University

Glenville, WV
Mollohan Building Renovations

Glenville State University

Glenville, WV
We Proudly Serve

West Liberty University

West Liberty, WV
Elbin Library HVAC renovations



ALAN M. GABER PE

SENIOR ELECTRICAL ENGINEER

Mr. Gaber is an Electrical Engineer, who for over 36 years, has a broad range of electrical and professional experiences designing building systems. He has experience working collaboratively with others to research and identify the clients' needs, and successfully meeting those needs. Alan takes pride in providing designs that are concise, efficient and within the client's budget. Mr. Gaber's experiences include K-12 & post secondary education, commercial, industrial, institutional, municipal/civic, personal care/senior living, and other sectors of business.



EDUCATION

Ohio Northern University
B.S. Electrical Engineering with a
Computer Science Option

PROFESSIONAL AFFILIATIONS & REGISTRATIONS

Registered Engineering in:
Ohio
Pennsylvania

YEARS OF EXPERIENCE

36 years

SELECTED EXPERIENCE

City of Moundsville

Moundsville, WV
Municipal/Public Safety Building

City of Cadiz

Cadiz, OH
Cadiz Fire Department

Brooke County Commission

Wellsburg, WV
Judicial Center & Historic
Courthouse

City of Steubenville

Steubenville, OH
Municipal Building interior
renovations

West Virginia Department of Transportation,

Huntington, WV
Division of Highways, District 2
Headquarters

West Virginia Department of Transportation,

New Martinsville, WV
Division of Highways, District 6
Facility

Fort Henry Building

Wheeling, WV
Fourth Floor office build-out

Glenville State University

Glenville, WV
School of Health Sciences

Cabell County Schools

Milton, WV
New Milton Elementary School

Fayette County Schools

Meadow Bridge, WV
New Meadow Bridge PK-12
School and school-based health
clinic

Fayette County Schools

Oak Hill, WV
Fayette Institute of Technology
renovations

Fayette County Schools

Smithers, WV
Valley PreK-8 School renovations

Hampshire County Schools

Slanesville, WV
New Ice Mountain Elementary
School

Hampshire County Schools

Romney, WV
New South Branch Elementary
School

Hampshire County Schools

Augusta, WV
New Windy Ridge Elementary
School

Ohio County Schools

Wheeling, WV
Elm Grove Elementary School
renovations

Summers County Schools

Talcott, WV
Talcott Elementary School Gym
renovation

Tyler County Schools

Sistersville, WV
Tyler Consolidated MSHS Gym
Entrance & Practice Room
addition

Wayne County Schools

Fort Gay, WV
Tolsia High School Gym



PETER T. DONNELLY

PE, LEED AP

MECHANICAL ENGINEER

Mr. Donnelly is a senior level Mechanical Engineer with more than 40 years of experience in a wide range of energy-related research, design, and management projects. Building evaluations, facility audits, and space utilization studies make up a significant portion of Pete's workload, in addition to the design of HVAC, fire protection, and plumbing systems. His project experience covers a wide range of building types, from schools and laboratories to healthcare facilities. Furthermore, he is a LEED Accredited Professional and can design energy efficient features into your project.



EDUCATION

State University of New York
A.A.S. Air Conditioning Technology

Rochester Institute of Technology
B.S. Energy Engineering

PROFESSIONAL AFFILIATIONS & REGISTRATIONS

Registered Engineering in:
Pennsylvania

YEARS OF EXPERIENCE

43 years

SELECTED EXPERIENCE

Cabell County Schools

Milton, WV
New Milton Elementary School

West Virginia Department of Transportation,

Huntington, WV
Division of Highways, District 2
Headquarters

City of Steubenville

Steubenville, OH
Municipal Building interior
renovations

Vertex Non-profit Holdings

Fairmont, WV
NOAA-GOES-R RBU Facility East
chiller

McKinley Architecture & Engineering

Mars, PA
North Pittsburgh Corporate Office

Wyngate Senior Living Community

Weirton, WV
Weirton Senior Center HVAC
renovation

Glenville State University

Glenville, WV
School of Health Sciences

Hampshire County Schools

Augusta, WV
New Windy Ridge Elementary
School

Harrison County Schools

Lost Creek, WV
South Harrison High School HVAC

Marshall County Schools

Cameron, WV
Cameron High School chiller

Tyler County Schools

Sistersville, WV
Headhouse addition

Tyler County Schools

Sistersville, WV
Tyler Consolidated MSHS Gym
Entrance and Practice Room
Addition

Aliquippa School District

Aliquippa, PA
Aliquippa Jr./Sr. High School

Avonworth School District

Pittsburgh, PA
Junior/Senior High School

Butler Area School District

Butler, PA
Butler Senior High School

Canon-McMillan School District

Canonsburg, PA
Canon-McMillan Senior High
School

Centennial School District

Warminster, PA
William Tennent High School

Northern Bedford County School District

Loysburg, PA
Middle School / High School

Saint Joseph's High School

Natrona Heights, PA
Gymnasium Addition



SCOTT D. KAIN

ENGINEERING PRODUCTION MANAGER

Mr. Kain, our Engineering Production Manager, is an accomplished engineering designer who has performed in all the engineering trades we provide; specializing in plumbing, electrical, and fire protection. He has been utilized for various McKinley Architecture and Engineering's projects that needed additional mechanical, structural, and architectural manpower. In addition, Mr. Kain has also provided 3D renderings, to aid in business development, during his long tenure at McKinley Architecture and Engineering. He joined McKinley in 2001.



EDUCATION

Technology Education College /
Ohio State University
Associates in Mechanical Design

YEARS OF EXPERIENCE

29 years

SELECTED EXPERIENCE

West Virginia Army National Guard

Kingwood, WV
Mountaineer Challenge Academy

West Virginia Army National Guard

Kingwood, WV
Multi-Purpose Building

West Virginia State Police

Logan, WV
New Logan Detachment / Back-Up Data Center for the WVSP Headquarters

West Virginia State Police

Dunbar, WV
West Virginia State Police Academy - New Multi-Purpose Training and Wellness Building

State of West Virginia

Logan, WV
Building 55: WV State Office Complex
LEED Certified
ENERGY STAR Rating of 91

West Virginia University's Fire Extension Services

Jackson's Mill, WV
New State Fire Training Academy

West Virginia University

Morgantown, WV
University Police Building renovations

City of Moundsville

Moundsville, WV
New Municipal Public Safety Bldg

City of Wheeling

Wheeling, WV
Wheeling Island Fire Station

Brooke County Commission

Wellsburg, WV
Judicial Center & Historic Courthouse

Tyler County Commission

Middlebourne, WV
Judicial Building

Belmont County Commission

St. Clairsville, OH
Courts & Offices build-outs

Panhandle Cleaning & Restoration

Triadelphia, WV
Panhandle Cleaning & Restoration warehouse, office, and garages

Veterans Affairs Medical Centers

Beckley, WV
VAMC Beckley

Dr. Ryan Ferns

Triadelphia, WV
The Ryan Ferns HealthPlex

Dr. Ganzer

Wheeling, WV
Dr. Ganzer Medical Office Building renovations

Cabell County Schools

Milton, WV
New Milton Elementary School

Fayette County Schools

Meadow Bridge, WV
New Meadow Bridge PK-12 School and school-based health clinic

Hancock County Schools

Weirton, WV
New Weirton Elementary School and school-based health clinic



DAVID A. ULLOM

FIRE PROTECTION ENGINEERING DESIGNER

Mr. Ullom, our BIM Coordinator and Fire Protection Engineering Designer, is a results-driven individual who prioritizes safety, cost-effective solutions, and exceeding customer expectations. He is proficient in Autocad, Inventor, and Revit software. David also has experience as a Sales Engineer, Applications Engineer, and Map Developer, which provides an unique understanding for problem solving.



EDUCATION

Fairmont State University
B.S. Mechanical Engineering
Technology
Pierpont Community and Technical
College
Associates Degree in Applied
Sciences: Drafting and Design

YEARS OF EXPERIENCE

13 years

SELECTED EXPERIENCE

City of Moundsville

Moundsville, WV
New Municipal Public Safety Bldg

City of Cadiz

Cadiz, OH
Cadiz Fire Department

WVU Medicine

Glen Dale, WV
WVU Reynolds Memorial Hospital
- School of Nursing

Brooke County Commission

Wellsburg, WV
Judicial Center & Historic
Courthouse

Belmont County Commission

St. Clairsville, OH
Courts & Offices build-outs

Jefferson County Commission

Steubenville, OH
Jefferson County Justice Center
renovations

Jefferson County Commission

Steubenville, OH
Jefferson County Jail renovations

Trinity Health System

Steubenville, OH
Crisis Rehabilitation Unit

General Services Administration

Warwood, WV
Social Security Administration
Office build-out / renovations

Main Street Bank

Toronto, OH
Toronto branch

Cabell County Schools

Milton, WV
New Milton Elementary School

Fayette County Schools

Meadow Bridge, WV
New Meadow Bridge PK-12
School and school-based health
clinic

Fayette County Schools

Oak Hill, WV
Fayette Institute of Technology
renovations

Fayette County Schools

Oak Hill, WV
Oak Hill High School gymnasium
renovations

Harrison County Schools

Clarksburg, WV
Gore Elementary School

Harrison County Schools

Lost Creek, WV
New Lost Creek Elementary
School

Ohio County Schools

Wheeling, WV
Triadelphia Middle School annex
addition & renovations

Ohio County Schools

Wheeling, WV
Wheeling Park High School
addition and renovations

Fort Henry Building

Wheeling, WV
Fourth Floor office build-out



MICHAEL J. CLARK, SR.

SENIOR ELECTRICAL ENGINEERING DESIGNER

Mr. Clark is an Electrical Engineering Designer and a Certified Journeyman Electrician who brings a cross-trained background to our projects; being skilled in both the design and the construction ends gives him a unique ability to understand all aspects of a project. He is knowledgeable in all areas of the national electrical code and excels in analyzing and solving problems with various electrical controls and systems. He is also adept in performing electrical and mechanical installations, maintenance and repairs in plant facilities. Furthermore, he is seasoned as an Electrical Foreman and Superintendent on both commercial and industrial job sites.



EDUCATION

Eastern Gateway Community College
A-ATS Electro-Mechanical
Engineering

Jefferson Community College
A-ATS Electrical Trade Technology

PROFESSIONAL AFFILIATIONS & REGISTRATIONS

Certified in SMAW Weld Process &
Basic Welding and Applications 2002

West Virginia Journeyman License

Ohio Fire Alarm License

OSHA 30 Certified

YEARS OF EXPERIENCE

40+ years

SELECTED EXPERIENCE

City of Moundsville

Moundsville, WV

New Municipal Public Safety Bldg

City of Cadiz

Cadiz, OH

Cadiz Fire Department

Brooke County Commission

Wellsburg, WV

Judicial Center & Historic
Courthouse

Tyler County Commission

Middlebourne, WV

Judicial Building

Belmont County Commission

St. Clairsville, OH

Courts & Offices build-outs

State of West Virginia

Logan, WV

Building 55: WV State Office
Complex

LEED Certified

ENERGY STAR Rating of 91

Fayette County Schools

Meadow Bridge, WV

New Meadow Bridge PK-12
School and school-based health
clinic

Hancock County Schools

Weirton, WV

New Weirton Elementary School
and school-based health clinic

Chapman Dental Group

New Martinsville, WV

Dr. Chapman's Office Building

Holiday Inn Express Hotels

5 Hotels in 4 States

Holiday Inn Express Hotels &
Suites

Fort Henry Building

Wheeling, WV

Fort Henry Building build-out
renovations

Wheeling Island Hotel-Casino-Racetrack

Wheeling, WV

Multiple projects

Carenbauer Wholesale Corporation

Wheeling, WV

Warehouse addition and office
renovations

Bennett Square

Wheeling, WV

Bennett Square build-out
renovations

Cabell County Schools

Milton, WV

New Milton Elementary School

Fayette County Schools

Oak Hill, WV

Fayette Institute of Technology
renovations

Fayette County Schools

Hico, WV

Midland Trail High School
gymnasium renovations

Fayette County Schools

Oak Hill, WV

Oak Hill High School gymnasium
renovations



HEATH L. FAIN

CONSTRUCTION CONTRACT ADMINISTRATOR

Mr. Fain has vast experience in construction, with construction management, business management, business management, and contract administration. With a proven track record of success within several industries he brings a well-rounded approach to keeping things on task, finding solutions and working to see a job completed in excellence. As your CA, he will observe the construction progress; is the liaison between the owner, contractor, and architect/engineer; will ensure that the contractor is following the construction documents; and more.



EDUCATION

Putnam Career and Technical
College
Certificate in Journeyman Carpentry
West Virginia State University
Associate in Architectural Drafting /
Construction Management

PROFESSIONAL AFFILIATIONS & REGISTRATIONS

Capital Fund Specialist
UPCS Certified Housing Inspector
LEED Green Associates Sustainable
Green Building Practices
HVAC Technician Type I, II
Lead Paint Removal

YEARS OF EXPERIENCE

20 years

SELECTED EXPERIENCE

West Virginia Lottery

Charleston, WV
WV Lottery Building roof

Everstory Partners

Charleston, WV
Kanawha Valley Memorial Garden

Fayette County Schools

Meadow Bridge, WV
New Meadow Bridge PK-12
School and school-based health
clinic

Cabell County Schools

Milton, WV
New Milton Elementary School

Clay County Schools

Clay, WV
Clay Elementary School HVAC

Fayette County Schools

Oak Hill, WV
Fayette Institute of Technology
renovations, including roof

Fayette County Schools

Hico, WV
Midland Trail High School gym
renovations

Fayette County Schools

Oak Hill, WV
Oak Hill High School gym
renovations, including roof

Fayette County Schools

Smithers, WV
Valley PK-8 School renovations

Fayette County Schools

County-Wide Windows & Doors
replacements

Fayette County Schools

6 Outdoor Classrooms County-
Wide

Summers County Schools

Hinton, WV
Summers County MSHS addition
and renovation

Summers County Schools

Talcott, WV
Talcott Elementary School Gym
renovation

Wayne County Schools

Fort Gay, WV
Tolsia High School Gym

Wayne County Schools

County-Wide HVAC upgrades

Wayne County Schools

County-Wide Plumbing
replacements

Wayne County Schools

County-Wide Windows
replacements

Wyoming County Schools

Clear Fork, WV
Westside High School Practice
Facility

Wyoming County Schools

New Richmond, WV
Wyoming County East High
School field renovations

Kanti S. Patel

Geotechnical Engineer

EDUCATION B.E. Civil Engineering, Gujarat University, 1977
M.S. Civil Engineering, West Virginia University, 1979

PROFESSIONAL
REGISTRATION Licensed Professional Engineer in the following states and commonwealths:

West Virginia
Ohio
Kentucky
Virginia

YEARS OF
EXPERIENCE 31

PROFESSIONAL
AFFILIATIONS National Society of Professional Engineers
American Society Of Civil Engineers
Association of Soils and Foundations Engineers
Association of Engineering Geologists

PROFESSIONAL
EXPERIENCE Mr. Patel has over 31 years of experience in the field of geotechnical engineering. He has been responsible for a wide variety of soils and foundation projects throughout West Virginia, Ohio, Virginia and surrounding states. His experience includes initiation, investigation, analysis, and design of classic geotechnical projects including residential, commercial, industrial facilities, and landslide stabilization.

He has performed and supervised a large variety of engineering projects including: School buildings, hospitals, office buildings, chemical facilities, motel building, shopping mall, roadways, air facilities and runways, and solid waste landfills. He has coordinated the drilling and soil laboratory analysis programs for large projects such as the Mt. Olive Prison site, Riverside High School, Embassy Suites Hotels, Holiday Inn Hotels, Ladely Tower. He is thoroughly knowledgeable of the soil and subsurface conditions in West Virginia, Virginia, Pennsylvania, Ohio, Kentucky, and Maryland. He has performed over 100 landslides study and stabilization project in West Virginia, Virginia, Ohio and Kentucky.



Ryan D. Jackson

Project Manager

EDUCATION: B.S. Ag. in Environmental Protection, West Virginia University, May 1997
M.S. in Environmental Science, Marshall University, Current

PROFESSIONAL
CERTIFICATION: ASTM E 1527 - Phase I Assessment - 1998
ASTM E 1903 - Phase II Assessment - 2000
Wetlands Regulations in WV - 1999
Certified Compaction Technician - WV Department of Highways
Certified Environmental Inspector

YEARS OF
EXPERIENCE: 16

PROFESSIONAL
AFFILIATIONS: Environmental Assessment Association
Certified Environmental Inspector

PROFESSIONAL
EXPERIENCE: Mr. Jackson has over 12 years of training and experienced in the environmental field. His experience includes performance of numerous Phase I and II Environmental Site Assessments throughout West Virginia, Ohio and Kentucky, UST removal and tank pit closure to WVDEP specifications, site characterization, environmental sampling, and asbestos inspections.

Mr. Jackson has over 12 years of experience in the field of testing and inspection of construction materials. His experience includes inspection of shallow and deep foundation system (caissons and auger-cast piling), soil compaction testing, concrete testing, placement of stone base, boring inspector on various WVDOH projects, boring inspection on numerous geotechnical exploration project, and various laboratory testing.

His responsibilities have included all Phases of quality control on numerous large projects (schools, hospitals, commercial buildings, bridges and roadways).



Joe H. Francis

Project Manager

EDUCATION:

A.A.S. (Associate in Applied Science) Majoring in Building Construction-
1982

PROFESSIONAL CERTIFICATION:

Certified Welding Inspector - American Welding Society
Certified Compaction Technician - WV Department of Highways
Certified Concrete Technician - WV Department of Highways
Licensed Asbestos Inspector - WV License # A1000564
Licensed Lead Inspector - WV License # P1000013

YEARS OF EXPERIENCE:

26

PROFESSIONAL AFFILIATIONS

American Welding Society

PROFESSIONAL EXPERIENCE:

Mr. Francis has over 26 years of experience in the field of testing and inspection of construction materials. His experience includes inspection of shallow and deep foundation system (pipe piling, H-beam, timber piles, caissons, and auger-cast piling), soil compaction testing, concrete testing, concrete coring, structural steel inspection (bolt testing, weld inspection including ultrasonics, magnetic particle, dye penetrant, and visual inspection), boring inspector on various WVDOH projects, and various laboratory testing.

His responsibilities have included all phases of quality control on numerous large projects (airports, Army Corps of Engineers projects, prisons, schools, hospitals, commercial building, bridges, and roadways.

He has also worked for 15 years as manager of field laboratory services with over 19 employees.



MICHAEL R. MILLER, PE

ROLE: Structural Project Manager

Mr. Miller is a Principal in Charge and Project Manager on commercial, institutional, medical, research and restoration projects. He is experienced in structural analysis and design of new structures; investigation, restoration/renovation and reuse of existing structures; building masonry facade investigation, remediation/restoration; preparation of feasibility studies; contract documents and specifications.

In addition, Mr. Miller's collaborative design approach has allowed his clients to develop and incorporate unique, but practical solutions on their projects. His project structural systems capabilities encompass; steel, composite steel, steel joist and joist girder, wood, timber, masonry, reinforced concrete and precast concrete. Foundation systems design includes conventional spread footings, drilled piers (caissons), auger cast concrete piles and slab-on-grades on expansive soils, as well as performance specifications for concrete underpinning and soil nailing.

**Joined the Firm
1990**



REPRESENTATIVE EXPERIENCE

PA NATIONAL GUARD

Combined Support Maintenance Shop

Moon Township, PA

OHIO ARMY NATIONAL GUARD ARMORY

Brook Park Building Interior and Exterior Renovations

Brook Park, OH

UNITED STATES ARMY CORPS OF ENGINEERS

Kirtland AFB Building 201

Albuquerque, NM

BUTLER COUNTY GOVERNMENT CENTER

Annex Addition

Butler, PA

CITYNET CENTER

The Bridge Sports Complex

Bridgeport, WV

FAIRMONT FEDERAL CREDIT UNION

Drive Through Bank

Fairmont, WV

HARRISON COUNTY SCHOOLS

Additions and Renovations

Bridgeport, WV

OHIO COUNTY SCHOOLS

Additions and Renovations

Wheeling, WV

WEST VIRGINIA UNIVERSITY

Advanced Engineering Building

Morgantown, WV

GLENVILLE STATE COLLEGE

Science Building Renovations

Glenville, WV

GRAND VUE PARK

Tree Top Villas

Moundsville, WV

LOUIS A JOHNSON VA MEDICAL CENTER

Addition and Renovations

Clarksburg, WV

PENNSYLVANIA TURNPIKE COMMISSION

Central Administration Building Additions and Renovations

Harrisburg, PA

DEPARTMENT OF CONSERVATION & NATURAL RESOURCES (DCNR)

District 5 Administration Building Addition

Huntingdon, PA

District 20 Administration Building and Support Structure

Dushore, PA

Education

Cleveland State University, 1996
Master of Science in Civil
Engineering

The Pennsylvania State University,
1990 Bachelor of Architectural
Engineering (Structural)

Registration: PE 1997

Pennsylvania

Ohio

Maryland

New Jersey

New York

Virginia

West Virginia

Professional Affiliations

Structural Engineers Association
of Ohio

Code Management Review Board
for City of Butler, PA

American Institute of Steel
Construction

First Sergeant (retired)

Pennsylvania Army National Guard

barberhoffman.com

Greg Fox oversees TERRADON's Land Development Sector. Fox has been responsible for hundreds of notable commercial, educational and recreational site development projects during his 30 year career. During his time as Land Development Department Head, TERRADON has earned Engineering Excellence Awards from the West Virginia Association of Consulting Engineers, numerous Merit Awards from the American Society of Landscape Architects, and the Gold Award from the American Council of Engineering Companies. Fox has performed a number of site selection and analysis services on projects over the last 30 years.

Project Experience

The Summit Bechtel Family National Scout Reserve, Fayette County, WV

Provide Site Design for the 10,600+ acre site in Fayette County, WV. Responsible for site grading, construction drawings, NPDES design and coordination for all project sub-consultants for NPDES permitting with WVDEP.

Greater Greenbrier Sports Complex, Greenbrier County, WV

Provided Master Planning and Grading Design Services for the Greater Greenbrier Sports Complex located north of Lewisburg, WV. Five phases include: Master Planning, Grading Study, Full Construction Documents, Utility Layout, Road Design, Erosion and Sediment Control.

Grand Vue Park, Marshall County, WV

Created a Master Plan for the expansion of the Marshall County, WV park. The Master Plan was followed by a Phase I design and construction drawing package that included six "tree house"-style lodges and a high adventure park to complement the park's existing zip lines. High adventure features include a 30' high aerial obstacle course, a 28' high rock-climbing wall, a 60' gravity swing, a rappelling wall, a 43 ft mega jump and a giant trampoline.

Shawnee Multi-Sport Complex, South Charleston, WV

Provided Master Planning and Grading Design Services for the Shawnee Sports Complex in South Charleston, WV. Phases include: Master Planning, Grading Study, Full Construction Documents, Utility Layout, Road Design, Erosion and Sediment Control.

Putnam County Parks Master Planning, Putnam County, WV

Provided Master Planning and site civil design services for the expanding Valley Park in Hurricane, Putnam County, WV. This work is part of a nearly \$2 million expansion, which was completed in 2013 and adds an additional 6 acres to the park. The project included planning for athletic fields, multiple parking lots, access roads and greenspace, but also incorporated a walking trail that ties into existing park trails. The plan was produced in coordination with the WVDOT to determine roadway/walkway ingress/egress and designed in accordance with local, state and federal regulations.

Fairmont Riverfront Park Master Plan, Fairmont, WV

The City of Fairmont and the Fairmont Renaissance Corporation intend to develop new recreation opportunities and at the same time enhance economic development opportunities for the community. The main goal

Education

B.A. Landscape Architecture
West Virginia University

B.A. Geography & Planning
West Virginia University

Certifications

Registered Professional Landscape Architect: WV

LEED Accredited Professional

Total Years Experience
+35

Shawn Gray is an experienced Site Designer and Land Planner who serves as an integral part of the TERRADON design team. He offers experience on many of TERRADON's highest profile projects, focusing on large scale site development and parks and recreation projects. Gray also provides site design and landscape architecture services for K-12 and Higher Education projects. He is responsible for developing site, grading, landscape and utility plans, site detailing and erosion sediment control plans and permitting.

Project Experience

The Summit Bechtel Family National Scout Reserve, Fayette County, WV

Provide Site Design for the 10,600+ acre site in Fayette County, WV. Responsible for site grading, construction drawings, NPDES design and coordination for all project sub-consultants for NPDES permitting with WVDEP.

Greater Greenbrier Sports Complex, Greenbrier County, WV

Provided Master Planning and Grading Design Services for the Greater Greenbrier Sports Complex located north of Lewisburg, WV. Five phases include: Master Planning, Grading Study, Full Construction Documents, Utility Layout, Road Design, Erosion and Sediment Control.

Grand Vue Park, Marshall County, WV

Created a Master Plan for the expansion of the Marshall County, WV park. The Master Plan was followed by a Phase I design and construction drawing package that included six "tree house"-style lodges and a high adventure park to complement the park's existing zip lines. High adventure features include a 30' high aerial obstacle course, a 28' high rock-climbing wall, a 60' gravity swing, a rappelling wall, a 43 ft mega jump and a giant trampoline.

Shawnee Multi-Sport Complex, South Charleston, WV

Provided Master Planning and Grading Design Services for the Shawnee Sports Complex in South Charleston, WV. Phases include: Master Planning, Grading Study, Full Construction Documents, Utility Layout, Road Design, Erosion and Sediment Control.

Putnam County Parks Master Planning, Putnam County, WV

Provided Master Planning and site civil design services for the expanding Valley Park in Hurricane, Putnam County, WV. This work is part of a nearly \$2 million expansion, which was completed in 2013 and adds an additional 6 acres to the park. The project included planning for athletic fields, multiple parking lots, access roads and greenspace, but also incorporated a walking trail that ties into existing park trails. The plan was produced in coordination with the WVDOT to determine roadway/walkway ingress/egress and designed in accordance with local, state and federal regulations.

Fairmont Riverfront Park Master Plan, Fairmont, WV

The City of Fairmont and the Fairmont Renaissance Corporation intend to develop new recreation opportunities and at the same time enhance economic development opportunities for the community. The main goal of the planning process was to develop a plan that will allow for the

Education

B.A. Landscape
Architecture
West Virginia
University

Total Years Experience

+15

"Pete" Williams is a graduate of West Virginia University with a Bachelor of Science in Landscape Architecture. His responsibilities include landscape architectural design, grading and storm water drainage design, the design of pedestrian circulation systems and related amenities, roadway design, site planning, and quality control. Mr. Williams is registered as a professional Landscape Architect in West Virginia with more than 15 years of experience at TERRADON and more than 25 years of overall experience.

Project Experience

Grand Vue Park, Marshall County, WV

Created a Master Plan for the expansion of the Marshall County, WV park. The Master Plan was followed by a Phase I design and construction drawing package that included six "tree house"-style lodges and a high adventure park to complement the park's existing zip lines. High adventure features include a 30' high aerial obstacle course, a 28' high rock-climbing wall, a 60' gravity swing, a rappelling wall, a 43 ft mega jump and a giant trampoline.

Shawnee Multi-Sport Complex, South Charleston, WV

Provided Master Planning and Grading Design Services for the Shawnee Sports Complex in South Charleston, WV. Phases include: Master Planning, Grading Study, Full Construction Documents, Utility Layout, Road Design, Erosion and Sediment Control.

Fairmont Riverfront Park Master Plan, Fairmont, WV

The City of Fairmont and the Fairmont Renaissance Corporation intend to develop new recreation opportunities and at the same time enhance economic development opportunities for the community. The main goal of the planning process was to develop a plan that will allow for the comprehensive development and implementation of new elements to the river-front. The elements planned will include rehabilitation of an existing park and new recreation, commercial, and residential opportunities.

Greater Huntington Parks and Recreation District, Huntington, WV

Responsible for trail design of a connector from Harveytown Park to Ritter Park in Huntington, WV. TERRADON provided a 3-Phase Master Planning approach for a section of trail that is predicted to be heavily used by the Huntington Community. Also responsible for the Master Planning of a unique trail system for the Greater Huntington Parks and Recreation District. The project design called for the connection of the Ceredo-Kenova area to Huntington. The trail system was designed to use the top of an earthen flood levy to move through urban areas. Design included alignments, typical sections and E&S Control.

Volcano Island Master Planning, Fairmont, WV

Provided land planning and design engineering, utility location and mapping services for the properties. The master planning provided vision for Volcano Island Water Park, allowing the City of Fairmont efficient and value-based use of the former environmentally concerned site.

Education

B.A. Landscape
Architecture
West Virginia
University

Total Years Experience

+27

Kristen McClung serves as a Civil-Site Engineer for TERRADON Corporation and is based in the Lewisburg, WV office. She brings over 26 years of engineering practice to public and private sector clients. From conception through acceptance of projects, McClung offers experience in civil, environmental, land development, streetscapes, survey, permitting, water, wastewater, paving, storm drainage, transportation and erosion-sedimentation control.

Project Experience

Tanyard Station Sanitary Sewer Design, Village of Barboursville, WV
McClung performed the Sanitary Sewer for this new commercial, out-door shopping mall. She performed the sanitary sewer calculations for the sizing of the trunk line through the development; for the new sewer pump station within the development for that area of the development that was too low for the primary gravity system; and for the new pumps associated with the Village's existing Pump Station #4. As part of the proposed development, the existing force main for Pump Station #4 had to be re-routed into the development's new sanitary sewer trunk line, resulting a new pump curve for the existing station.

Schoenbaum Tennis Court Asphalt & Storm Drainage Repairs, Charleston, WV

McClung designed a new storm drainage underdrain system for the existing tennis courts. The courts were experiencing weeping from beneath the courts of trapped storm water runoff/ground water. As the existing courts were nearing the end the existing asphalt surface course's useful life, the Parks and Recreation Department decided that this was the appropriate time to install the needed underdrain system and re-surface the course, as the new underdrain system would require the demolition of the existing asphalt surface course. McClung, also developed the Contract Documents and Construction Specifications in coordination with the City of Charleston for the public bidding of this project.

The Greenbrier Sporting Club Driveway Drainage Projects, White Sulphur Springs, WV

McClung was brought in to evaluate various private homes' driveways which were experiencing surface water runoff ponding issues from incorrectly graded driveways and non-functioning/undersized storm drainage systems. McClung developed new driveway grading plans and new storm drainage collection and conveyance systems to alleviate the stormwater runoff ponding.

Center Court at Creekside, The Greenbrier, White Sulphur Springs, WV

Served as the project manager for this project, a 2500 seat outdoor tennis stadium and the historic Greenbrier Resort. Responsibilities included site grading to accommodate the bowl stadium, which required over 30,000 cy of fill material. McClung also sized and designed the storm water drainage system, sanitary sewer system, and water distribution system for the project.

Education

M.B.A. University of Georgia

M.S. Civil Engineering, Auburn University

B.C.E. Civil Engineering, Auburn University

Certifications

Georgia Soil & Water Conservation Commission

Level II Certified Design Professional

Professional Engineer: WV, GA, AL

Total Years Experience
+26



WVARNG CAMP DAWSON MOUNTAINEER CHALLENGE ACADEMY WEST VIRGINIA ARMY NATIONAL GUARD



CLIENT

West Virginia Army National Guard

LOCATION

Kingwood, WV

PROJECT DATA

54,800 SF

\$16.0 M

The new Mountaineer Challenge Academy (capital "NG" for National Guard) is the first nationwide educational program for at-risk children in a quasi-military setting. Design was in conjunction with Assemblage Architects. Our involvement in this project includes mechanical, electrical, plumbing, and fire protection engineering, as well as construction administration services.

The building program includes offices, support staff areas and a medical assistance space to accommodate the needs of the student residents. The residents require classrooms, a multi-purpose assembly/exercise/gymnasium, wellness / fitness rooms, locker and shower rooms, restrooms, and a community room / dining facility with an adjacent full service kitchen.

The multi-purpose areas accommodates wellness, physical activity, weight training, assemblies, banquets, and receptions, and serves as the central hub of the complex.

This project won a 2011 WV AIA Merit Award.





WVARNG CAMP DAWSON MULTI-PURPOSE BUILDING WEST VIRGINIA ARMY NATIONAL GUARD



CLIENT

West Virginia Army National Guard

LOCATION

Kingwood, WV

PROJECT DATA

55,000 SF

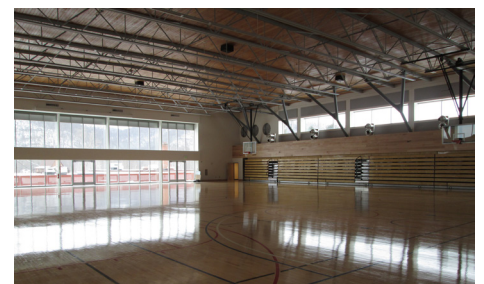
\$12.7 M

The mission of the Multi-Purpose Building at Camp Dawson is a new structure that serves as the primary wellness / physical training and event space for military units of the WVARNG. Design was in conjunction with Assemblage Architects. Our involvement in this project includes MEP engineering and construction administration.

The facility houses a large open space gymnasium/assembly room, a physical fitness area, locker rooms, offices, and more. The facility and grounds include parking, attached and detached storage, landscaping, security lighting and fencing, and a unique entry. This project was designed with energy recovery systems, as well as daylight harvesting.

The gymnasium/assembly room was based on occupancy of 200 exercising, or 3,500 at rest for events/assembly. It includes a tailor-made public address system with wireless microphone inputs for the events.

This project won a 2014 West Virginia AIA Honor Award.





MOUNDVILLE MUNICIPAL / PUBLIC SAFETY BUILDING

CITY OF MOUNDVILLE



CLIENT
City of Moundsville

LOCATION
Moundsville, WV

PROJECT DATA
27,000 SF
\$12.0 M

McKinley Architecture and Engineering led the team that recently designed a new Municipal/Public Safety Building for the City of Moundsville. This project is under construction.

As part of the design process, we proposed several layouts to the City from which to choose and we walked them through the decision making process to ensure that they are getting a building that meets their needs.

After planning meetings and design discussion, the building has developed into a 3 story structure. It will hold the Municipal Offices, Fire Department, Police Department, and Utility Departments. The 3rd story will be a wide-open storage area, which is currently a critical issue facing city employees.

The building is situated at a corner allowing easy access for the three bay Fire Department and easy access for the Police Department Sallyport. They also have Decon, hose storage, gear storage / locker room, offices, kitchen, fitness areas, and more.





STATE FIRE TRAINING ACADEMY

WEST VIRGINIA UNIVERSITY



CLIENT
West Virginia University

LOCATION
Jackson's Mill, WV

PROJECT DATA
25,752 square feet including the
8,300 sq. ft of the Arena



McKinley has worked with West Virginia University since the 1980s, and currently has an open-ended contract with them.

For one of our many projects, the new \$4.5 million West Virginia State Fire Training Academy is located near the Jackson's Mill 4-H Campus in Lewis County, WV. Because of the proximity to this state historic site, the design directive given by the Owner was to blend into the rural community. The exterior brings to mind a barn set into the sloping terrain in an agricultural setting. The Users we have spoken to enjoy teaching in our facility. Contextually, it "fits" into the Jackson's Mill Campus and local agricultural community.

Every year, WVU Fire Service Extension uses this one-of-a-kind facility to train more than 2,000 volunteer and professional firefighters and first-responders from around the state and nation. The facility is also the new home for the high-tech Mobile Aircraft Rescue Fire Fighting Unit and the Mobile Fire Training Unit.

There are two major components to the 25,752 SF building; the first is the Classroom Wing. This wing is comprised of a multi-tiered 30-seat distance learning room, two other connected instructional classroom spaces that allow for a range of class sizes, 4 administrative offices, 6 cubicle offices, a conference room/library, and a lounge/dining area. The administrative area is private but easily accessible from all classrooms. The multi-use facility is ideal for community group meetings and other events.



| continued State Fire Training Academy |

The second component, the 8,300 SF open bay training Arena, is an all-weather interior training facility. The scale of this structure, having a clear interior height greater than 30', allows the full extension of authentic fire training apparatus and vehicles for various types of hands-on programs. The large vehicle doors allow fire trucks and other props into the facility. A custom metal building skeleton with a board & batten metal skin was designed. The siding is representative of rural, vertical barn siding and serves as an integrating element throughout the large complex.





WHEELING ISLAND FIRE STATION

CITY OF WHEELING



CLIENT
City of Wheeling

LOCATION
Wheeling, WV

The Wheeling Island Fire Station proved to be a very exciting and interesting project for McKinley Architecture and Engineering. The station was built for the Wheeling Fire Department's Engine Company No. 5, who not only work here, but also live in this building during their shifts.

The living quarters feature a full kitchen and shared living/dining space as well as two semi-private bedrooms plus captain's bedroom and office. There is also an equipment/storage area, locker room, laundry room, exercise room/gym, as well as a shower rinsing area for the firemen when they return from a call.

The firehouse is equipped with three truck bays for Engine 5, the Regional Emergency Response Vehicles, and also houses the Fire Department's boat during the winter months.

The building is designed to resist flood damage with vents at the bottom floor line installed to equalize pressure of flood water. All living space was placed on the second floor, which is out of the floodplain.

Additionally, there is a platform generator at the top of the 35-foot hose tower. All mechanical equipment is also on the second level.

The building was designed to accommodate the modern fireman and to fit into the neighborhood, while still having the qualities of a traditional firehouse with a look that is recognizable from the street.





WEST VIRGINIA STATE POLICE PROJECTS

WEST VIRGINIA STATE POLICE



CLIENT

West Virginia State Police

LOCATION

State-wide, WV

Throughout the years, McKinley has been honored to have been selected for multiple consecutive West Virginia State Police open-ended contracts for all architectural and engineering services throughout West Virginia.

McKinley has completed design services on multiple new detachments in Berkeley, Logan, Morgantown, Rainelle, and Wheeling to name a few.

Moreover, we have also completed numerous renovations as well as additions on police detachments throughout the State, such as in Clarksburg, Franklin, Jackson County, Lewisburg, Moundsville, Romney, etc.

Various detachments have E911 Centers which have a higher level of security, such as in Doddridge, Franklin and Romney. Many include garages (some have multiple bays) for their various vehicles. Various detachments have bunk rooms.

We also created a Master Plan where we surveyed, reviewed, projected, budgeted, and documented 72 police facilities throughout the State.





WVSP NEW LOGAN DETACHMENT

WEST VIRGINIA STATE POLICE



CLIENT

West Virginia State Police

LOCATION

Logan, WV

PROJECT DATA

13,000 SF

\$4.5 M

We designed a new detachment in Logan County for the West Virginia State Police, which is now the Back-Up Data Center for the WVSP Headquarters facility in South Charleston; therefore, it needed much of the same emergency and power distribution systems since the facility must remain in operation 24/7. For this Logan facility, we designed a 350 kW backup generator for the entire building, as well as an Uninterruptible Power Supply (UPS) room, raised access floors, secured entrances, and more.

This building also includes a Dispatch Center with a dispatch room, radio room, and a computer rooms with raised access floors. Furthermore, the detachment has a two-bay garage, several offices, squad bay for 25 Troopers w/workstations, receptionist area, file rooms, dayroom, evidence room, 30 lockers, conference rooms, processing room, witness interview room, and more.

There are multiple energy-efficient and sustainable design aspects to the building. The Detachment uses a daylight clearstory to let natural daylight into the internal squad and conference rooms. This is the first time Insulated Concrete Forms (ICF) have been used for State Police Buildings; ICF's are an almost perfect fit since they are cost effective to construct, energy efficient, and secure. The HVAC System included the installation of 2 high efficiency condensing boilers, pumps with variable speed drive control, custom air handling unit with DX (remote condensing unit) and hot water coils, variable air volume boxes with hot water heating coils, computer room units with remote condensing units, and direct digital controls.



Lights Turned Off -
Showing Natural Day-Lighting

WVSP ACADEMY'S PHYSICAL TRAINING & WELLNESS FACILITY

WEST VIRGINIA STATE POLICE



CLIENT
West Virginia State Police

LOCATION
Dunbar, WV

PROJECT DATA
12,544 SF
\$1.85 M



We completed campus-wide improvement projects for the WV State Police Academy which included 5 buildings, and was completed in phases, on a building-by-building basis. This included the renovation of 3 existing dormitory/classroom buildings, the demo of a shooting range and replacing that building with a brand new upgraded shooting range control center, and this new Physical Training & Wellness Facility / Multi-Purpose Building.

This building includes a gymnasium, workout and wellness rooms, locker rooms, an office, server room, and more. Everything was designed to be functional; for example, there are various interior windows throughout so an instructor could have cadets doing weights, cardio, and be in the gym - utilizing all portions of the building at the same time - and the instructor could still simultaneously supervise all three groups.

The 5,500 SF gymnasium is comprised of a full-size basketball court with retractable basketball goals, an indoor track integrated into the gym floor, ceiling-mounted speakers for when they are in assembly, and storage room.

For wellness, there is a 1,100 SF strength training / weight room with a large storage room with kettle bells, weigh machines and dumbbells from 5 pounds to 120 pounds apiece. Next to this is a 1,100 SF cardio training room with dozens of cardiovascular equipment. Next to the cardio is a 784 SF "Force on Force" physical training room with mixed-martial art grade mats in a completely padded room. There are adjacent mens & womens locker rooms.

Furthermore, this was built with energy efficiency in mind, with the use of natural daylighting, self-supporting translucent 2 "skyroofs" in the gymnasium, kalwalls, and more. The occupancy sensors in every room, and skylight photo sensors in the gym, save an average of 40% on energy costs.



WAREHOUSE, WORKSHOP, GARAGE, AND OFFICE BUILDING

PANHANDLE CLEANING & RESTORATION



CLIENT

Panhandle Cleaning & Restoration

LOCATION

Wheeling, WV

PROJECT DATA

32,000 SF

\$3.5 M

Panhandle invested in a renovation and a new prefabricated metal building expansion project for a warehouse, workshop, garage, and office building. This renovation / expansion addition of the original business now allows Panhandle to employ about 100 workers.

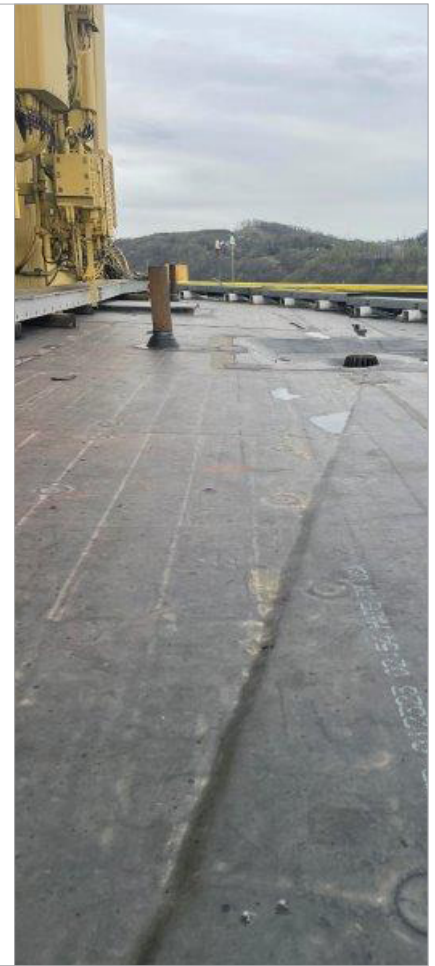
The warehouse's exterior measures 130'x200', which includes a 6,400 SF 2-story workshop mezzanine within the structure, providing 32,000 total SF.

There are multiple bays and loading docks around this structure; the garages fit vehicles of various sizes.

The exterior warehouse walls are finished with masonry infill and metal siding. Interior space varies between 20' - 30' clear height of the metal structure.

Panhandle required specialized components and considerations we had to design, such as flex spaces, flooring, roller conveyors, casework, workbenches, various countertop heights, mobile rolling racks, rinse stations, and specialty MEP systems to name a few.





WV LOTTERY HEADQUARTERS

WEST VIRGINIA LOTTERY



CLIENT

West Virginia Lottery Commission

LOCATION

Charleston, WV

PROJECT DATA

4,000 SF roof

CONTRACTOR

Harris Brothers Roofing

McKinley Architecture and Engineering worked with the West Virginia Lottery Commission to provide a method of correction for the pooling of water on the roof of the WV Lottery HQ Building.

We first completed a roof assessment which included identifying the roof structural and decking issues, water pooling investigation, curbing detail for all mechanical equipment located on the roof, and rain-water collection system analysis.

We provided plans for a low maintenance EPDM roof that meets current code and addresses all issues discovered in our Roof Assessment Report.

The construction involved the replacement of the upper roof on the high rise building, above the 13th floor. This portion of the roof is separated into 4 sections, since the penthouse is in the middle. Project also included ladders, safety rail, and secondary roof drain scuppers.

There is a lot of equipment on the roof that had to be worked around, including cell towers. This included extra planning and coordination with cellphone tower providers.

Project was completed in October 2023.





NEW MILTON ELEMENTARY SCHOOL

CABELL COUNTY SCHOOLS

CLIENT
Cabell County Schools

LOCATION
Milton, WV

PROJECT DATA
55,432 SF
\$24.0 M

CONTRACTOR
Hayslett Construction

McKinley Architecture and Engineering believes that a school building is more than a place for our children to attend classes, but it is an integral part of the community as a whole and should reflect the values and spirit of the community.

That is why the 55,432 SF Milton Elementary School for Cabell County Schools is designed differently from other schools. We designed a school to meet the unique needs and desires of the Milton community. The desire was a "Lodge" themed building design. We captured this image by using a timber framed canopy out front and a wood look fiber cement siding for the building. The theme continues into the front lobby with wood beams on the ceiling and a rough wood look wainscot.

But community doesn't just happen outside the school. We designed special places for the students to interact and learn how to get along with each other and live in a community. The corridors widen out in places to create a place for students to gather and for activities outside the classrooms. The Media center is central to the school and features folding partitions that allow the space to expand. The interiors will be colorful and full of light.

The building was designed to accommodate over 450 students.

A Groundbreaking Ceremony was held on May 11, 2023, at the building site on Newmans Branch Road; a site that is not in the flood zone, which is an on-going problem of their current school.





TERRADON Corporation completed site planning and site civil engineering for the 83,900 Square Feet Armed Forces Readiness Reserve Center in Eleanor, WV.

The site is home to stationed units: 111th Engineer Brigade (WVARNG) (the largest brigade in the WVARNG), Troop B, 1st Squadron, 150th Cavalry Regiment (WVARNG), 3664th Ordnance Company (WVARNG), and Detachment 3, Company D, 230th Brigade Support Battalion (WVARNG).

The WVARNG negotiated with the US Army Corps of Engineers for the site (with the maintenance center) totaling 43 acres at the base of the Winfield Locks and Dam site in Eleanor, WV. The building is located adjacent to the new Maintenance Facility on the site, with the main entrance facing east toward the main access to the site. The orientation of the building takes advantage of views of the wetland area and the Kanawha River. The Armory houses units of the state Army National Guard and one unit of the Navy.

Project Owner

WVARNG



TERRADON Corporation provided full service site civil engineering services for the design and completion of the WVARNG Eleanor WV Maintenance Center.

The Eleanor Maintenance Complex, in Eleanor, WV, is a 132,000 square foot state-of-the-art repair and maintenance facility for the West Virginia Army National Guard (WVARNG). The specially designed Army "Combined Logistic Support Facility" will house the Combined Support Maintenance Shop (DSMS), an Organizational Maintenance Shop (OMS) and United States Property and Fiscal Office (USPFO) parts and storage warehouse.

The facility provides a full range of maintenance support for all WVARNG military vehicles throughout the state. It includes 28 maintenance work bays with overhead bridge cranes, an engine rebuild shop, a body shop with blast and paint booths, a carpentry shop, a machine shop, a canvas shop, a small arms repair shop and an electrical communications repair shop. The facility also has specialized testing capabilities in the form of an engine transmission dynamometer.

Project Owner

WVARNG



TERRADON Corporation provided land development services for the Marshall University Indoor Recreation Center project on the Huntington, WV campus. As part of a team, TERRADON evaluated the University's program and needs in relation to available space. Standard design practices were incorporated with applied creative design and problem-solving to develop a unique solution that exceeded the University's need at an economically feasible cost.

The three story building is home to a number of sports and recreation amenities including four full size basketball courts, an aquatic center featuring two Olympic lanes, a hot tub and a whirl pool, three full size racquetball courts, locker rooms, outdoor resource center including a full size rock wall, 4 exercise studios, weight and cardio floors, an indoor running track and more. The facility is adjacent to the outdoor multi-purpose field.



TERRADON provided site design services for the roughly 14,000 square foot H. Bernard Wehrle Scout Service Center, a Boy Scouts of America Buckskin Council facility, near Charleston, WV. The center includes museum displays, conference rooms, a scout shop and other amenities to make it capable of hosting large meetings, volunteer training sessions, program coordination and overnight camping excursions. The Buckskin Council's existing Wyatt Scout Service, built in 1979 and located next to Daniel Boone Park on Kanawha Boulevard East, was refurbished and incorporated in the new building. The new building is nearly three times the size of the current building.

TERRADON provided pre-construction, design, and during construction services for the \$3.7 million renovation. The project was completed in a fashion where designers provided 30 percent plans and contractors began work while designers stayed ahead of them with engineering design and specification often times being performed in an expedited manner to meet aggressive time schedules.

TERRADON ensured construction activities met standard engineering specification and approved engineered drawings on a strict timeline. TERRADON provided construction documentation and project coordination for the fast track project. Oversight included CAD drawings, site layout and design, permitting, utility design, hardscapes and landscape architecture.



The Summit is a 10,600+ acre outdoor adventure center owned by the Boy Scouts of America. TERRADON performed site selection and site evaluation services. Additionally, the firm provided geotechnical investigations, design, survey, planning, and infrastructure design and inspection. Working under tight specifications and time restrictions, TERRADON spearheaded the delivery of the world class facility.

TERRADON worked with project owners to find the most feasible and economically beneficial site for the boy scout adventure site. The site selection in Fayette County, WV was chosen to compete with site selections across the United States. The competition was one of 28 site across 11 states.

TERRADON provided site prioritization and analysis to help project owners see the beneficial exponents to developing the outdoor adventure park in the mountains of West Virginia. TERRADON worked closely with state agencies during the site selection process to determine the best site development plans to economically benefit both the Boy Scouts of America as well as the state of West Virginia. The final design site was selected from scouring multi-acreage sites in different counties with specific elements considered including site feasibility, site readiness, budgeting exponents, and economic development. Prior to final selection, TERRADON's site was in the short list of three sites with two others in Virginia and Arkansas. The client was impressed with the quality and depth of our work that they hired TERRADON to do the bulk of the design work on site.



TERRADON provided land development and site civil engineering services for the development of the WV Advanced Technology Center located in South Charleston, WV. TERRADON evaluated various sites though out the Kanawha Valley and did an evaluation process for the full project site.

The Advanced Technology Center was considered the main component of the project development. However, the sites were also evaluated on the opportunity they could provide for the possible future expansion of a Community and Technical College. The most suitable sites were selected out of the expansive pool of possible sites within the area. The candidate sites that were chosen were studied in detail and an intensive inventory and analysis phase was conducted to determine the most appropriate site location for the projects.

The inventory process consisted of gathering necessary information needed to evaluate each site based on a list of established criteria developed for this site selection process including visibility, site readiness, site size, and more. The list of possible sites was narrowed down to the ten best sites with the most potential for development. TERRADON used prior knowledge of similar site selections to determine the criteria to develop for these site selections. The criteria database was compiled for each site by using various resources and implementing individual site visits with intensive data gathering. The WV Regional Technology Park site scored the highest out of the various sites considered.

After site selection, TERRADON provided full civil design as well as construction administration of site activities. The site was home to the former Union Carbide administration building and had a basement full of rubble from the building demolition. So as part of the project, TERRADON maintained that all the debris were cleaned out that the basement was backfilled with structural fill. This material came from a borrow site within the tech park at the "Ridge". This ridge was also the borrow site for the material harvested to cap the nearby fly ash pond at the South Charleston Industrial Park.



TERRADON Corporation served as the lead Special Inspection Engineer for the recently renovated Charleston Coliseum and Convention Center. In this role, TERRADON reviewed 30 percent design plans and developed a scope of services including a list and schedule of inspection items to be reviewed and inspected by field personnel. The scope of services was reviewed and approved by the City of Charleston, and TERRADON was retained to provide the services as a third party representative for the City.

The Scope of Work TERRADON prepared was comprehensive in nature, and crafted to be project specific and include inspection and review of all anticipated construction types, means, and methods. The purpose of the comprehensive scope was to capture all necessary work items and any potential ancillary items that could occur on the project. By including the principle and ancillary tasks, a fee was created to allow for the services to be completed without unintended cost overruns.

TERRADON's work was required to be overseen by an in-house Professional Engineer. All inspections were completed in compliance with the International Building Code and included Section 504 handicap accessibility, Americans with Disabilities Act compliance, Uniform Federal Accessibility Standards, and all applicable local, state and federal regulations.

Inspections included typical compaction and concrete, but also included steel weld inspections, foundation and structural inspections, floor flatness inspections and concrete reinforcing inspections, structural weld inspections, structural bolted connection inspection, deep foundation inspection and testing, floor flatness testing and fireproofing inspections.

REFERENCES

We feel that the best way to demonstrate our strengths and leadership in public safety facilities, fire stations, and similar Architectural/Engineering design is by referring to our clients. We also have an ever-growing list of repeat clients, which include having multiple open-end contracts with organizations; we are able to respond to their needs, and we are certain that we are able to respond to all of your needs as well. So that you don't only have to take our word for it; here is a list of references that we encourage you to call (we would be happy to provide more references, if requested):

New Milton Elementary School

Dr. Ryan Saxe
Cabell County Schools
2850 5th Ave
Huntington, WV 25702
(304) 528-5000

State Fire Training Academy

Mr. Murrey Loflin
WVU Fire Extension Services
2600 Old Mill Road
Weston, WV 26452
(304) 269-0872

Municipal / Public Safety Bldg

Mr. Rick Healy
City of Moundsville
800 6th Street
Moundsville, WV 26041
(304) 845-6300

Warehouse, Garage, and Office Building

Mr. Bob Contraguerro, Jr.
Panhandle Cleaning and Restoration
42 38th Street
Wheeling, WV 26003
(304) 232-2321



DESIGNATED CONTACT: Vendor appoints the individual identified in this Section as the Contract Administrator and the initial point of contact for matters relating to this Contract.

(Printed Name and Title) Ernest Dellatorre, Director of Business Development

(Address) 129 Summers Street - Suite 201, Charleston, West Virginia 25301

(Phone Number) / (Fax Number) (304) 830-5359 | (304) 233-4613

(email address) edellatorre@mckinleydelivers.com

CERTIFICATION AND SIGNATURE: By signing below, or submitting documentation through wvOASIS, I certify that: I have reviewed this Solicitation/Contract in its entirety; that I understand the requirements, terms and conditions, and other information contained herein; that this bid, offer or proposal constitutes an offer to the State that cannot be unilaterally withdrawn; that the product or service proposed meets the mandatory requirements contained in the Solicitation/Contract for that product or service, unless otherwise stated herein; that the Vendor accepts the terms and conditions contained in the Solicitation, unless otherwise stated herein; that I am submitting this bid, offer or proposal for review and consideration; that this bid or offer was made without prior understanding, agreement, or connection with any entity submitting a bid or offer for the same material, supplies, equipment or services; that this bid or offer is in all respects fair and without collusion or fraud; that this Contract is accepted or entered into without any prior understanding, agreement, or connection to any other entity that could be considered a violation of law; that I am authorized by the Vendor to execute and submit this bid, offer, or proposal, or any documents related thereto on Vendor's behalf; that I am authorized to bind the vendor in a contractual relationship; and that to the best of my knowledge, the vendor has properly registered with any State agency that may require registration.

By signing below, I further certify that I understand this Contract is subject to the provisions of West Virginia Code § 5A-3-62, which automatically voids certain contract clauses that violate State law; and that pursuant to W. Va. Code 5A-3-63, the entity entering into this contract is prohibited from engaging in a boycott against Israel.

McKinley Architecture and Engineering

(Company) 

(Signature of Authorized Representative)

Ernest Dellatorre, Director of Business Development June 14, 2024

(Printed Name and Title of Authorized Representative) (Date)

(304) 830-5359 | (304) 233-4613

(Phone Number) (Fax Number)

edellatorre@mckinleydelivers.com

(Email Address)



Department of Administration
Purchasing Division
2019 Washington Street East
Post Office Box 50130
Charleston, WV 25305-0130

State of West Virginia
Centralized Expression of Interest

| | | | |
|---|----------------------------|-------------------------|---|
| Proc Folder: 1436133 | | | Reason for Modification: Addendum No. 1 |
| Doc Description: Huntington Tri-State Readiness Center Addition Design EOI | | | |
| Proc Type: Central Purchase Order | | | |
| Date Issued | Solicitation Closes | Solicitation No | Version |
| 2024-06-06 | 2024-06-17 13:30 | CEOI 0603 ADJ2400000004 | 2 |

BID RECEIVING LOCATION

BID CLERK
DEPARTMENT OF ADMINISTRATION
PURCHASING DIVISION
2019 WASHINGTON ST E
CHARLESTON WV 25305
US

VENDOR

Vendor Customer Code: *000000206862

Vendor Name : McKinley Architecture and Engineering

Address :

Street : 129 Summers Street - Suite 201

City : Charleston

State : West Virginia **Country :** USA **Zip :** 25301

Principal Contact : Ernest Dellatorre

Vendor Contact Phone: (304) 340-4267 **Extension:** 115

FOR INFORMATION CONTACT THE BUYER

David H Pauline
304-558-0067
david.h.pauline@wv.gov

Vendor
Signature X

FEIN# 55-0696478

DATE June 14, 2024

All offers subject to all terms and conditions contained in this solicitation

ADDENDUM ACKNOWLEDGEMENT FORM
SOLICITATION NO.: CEOI ADJ2400000004

Instructions: Please acknowledge receipt of all addenda issued with this solicitation by completing this addendum acknowledgment form. Check the box next to each addendum received and sign below. Failure to acknowledge addenda may result in bid disqualification.

Acknowledgment: I hereby acknowledge receipt of the following addenda and have made the necessary revisions to my proposal, plans and/or specification, etc.

Addendum Numbers Received:

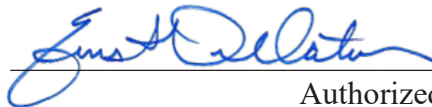
(Check the box next to each addendum received)

- | | |
|--|--|
| <input checked="" type="checkbox"/> Addendum No. 1 | <input type="checkbox"/> Addendum No. 6 |
| <input type="checkbox"/> Addendum No. 2 | <input type="checkbox"/> Addendum No. 7 |
| <input type="checkbox"/> Addendum No. 3 | <input type="checkbox"/> Addendum No. 8 |
| <input type="checkbox"/> Addendum No. 4 | <input type="checkbox"/> Addendum No. 9 |
| <input type="checkbox"/> Addendum No. 5 | <input type="checkbox"/> Addendum No. 10 |

I understand that failure to confirm the receipt of addenda may be cause for rejection of this bid. I further understand that that any verbal representation made or assumed to be made during any oral discussion held between Vendor's representatives and any state personnel is not binding. Only the information issued in writing and added to the specifications by an official addendum is binding.

McKinley Architecture and Engineering

Company



Authorized Signature

June 14, 2024

Date

NOTE: This addendum acknowledgment should be submitted with the bid to expedite document processing.