



The following documentation is an electronically-submitted vendor response to an advertised solicitation from the *West Virginia Purchasing Bulletin* within the Vendor Self-Service portal at ***wvOASIS.gov***. As part of the State of West Virginia's procurement process, and to maintain the transparency of the bid-opening process, this documentation submitted online is publicly posted by the West Virginia Purchasing Division at ***WVPurchasing.gov*** with any other vendor responses to this solicitation submitted to the Purchasing Division in hard copy format.

Header 1

List View

General Information | Contact | Default Values | Discount | Document Information | Clarification Request

Procurement Folder: 1257504

Procurement Type: Central Purchase Order

Vendor ID: 000000204787

Legal Name: THE THRASHER GROUP INC

Alias/DBA:

Total Bid: \$0.00

Response Date: 08/30/2023

Response Time: 9:07

Responded By User ID: Thrasher

First Name: Anjelica

Last Name: D'Annunzio

Email: adannunzio@thethrashergror

Phone: 304-624-4108

SO Doc Code: CEOI

SO Dept: 0313

SO Doc ID: DEP2400000007

Published Date: 8/9/23

Close Date: 8/30/23

Close Time: 13:30

Status: Closed

Solicitation Description: EOI - 2023 AML Contract N3

Total of Header Attachments: 1

Total of All Attachments: 1

Line	Comm Ln Desc	Qty	Unit Issue	Unit Price	Ln Total Or Contract Amount
1	Albright (Fortney) Refuse and Structures				0.00

Comm Code	Manufacturer	Specification	Model #
81100000			

Commodity Line Comments: N/A

Extended Description:

Albright (Fortney) Refuse and Structures

Line	Comm Ln Desc	Qty	Unit Issue	Unit Price	Ln Total Or Contract Amount
2	Cowger Highwall & Portals				0.00

Comm Code	Manufacturer	Specification	Model #
81100000			

Commodity Line Comments: N/A

Extended Description:

Cowger Highwall & Portals

Line	Comm Ln Desc	Qty	Unit Issue	Unit Price	Ln Total Or Contract Amount
3	Dotson Tipple Phase II				0.00

Comm Code	Manufacturer	Specification	Model #
81100000			

Commodity Line Comments: N/A

Extended Description:

Dotson Tipple Phase II

Line	Comm Ln Desc	Qty	Unit Issue	Unit Price	Ln Total Or Contract Amount
4	Granville (Buzzo) Clogged Stream				0.00

Comm Code	Manufacturer	Specification	Model #
81100000			

Commodity Line Comments: N/A

Extended Description:

Granville (Buzzo) Clogged Stream

Line	Comm Ln Desc	Qty	Unit Issue	Unit Price	Ln Total Or Contract Amount
5	Jadot Highwall and Portals				0.00

Comm Code	Manufacturer	Specification	Model #
81100000			

Commodity Line Comments: N/A

Extended Description:

Jadot Highwall and Portals

Line	Comm Ln Desc	Qty	Unit Issue	Unit Price	Ln Total Or Contract Amount
6	Miller Highwall & Portal				0.00

Comm Code	Manufacturer	Specification	Model #
81100000			

Commodity Line Comments: N/A

Extended Description:
Miller Highwall & Portal

Line	Comm Ln Desc	Qty	Unit Issue	Unit Price	Ln Total Or Contract Amount
7	Turner Highwall				0.00

Comm Code	Manufacturer	Specification	Model #
81100000			

Commodity Line Comments: N/A

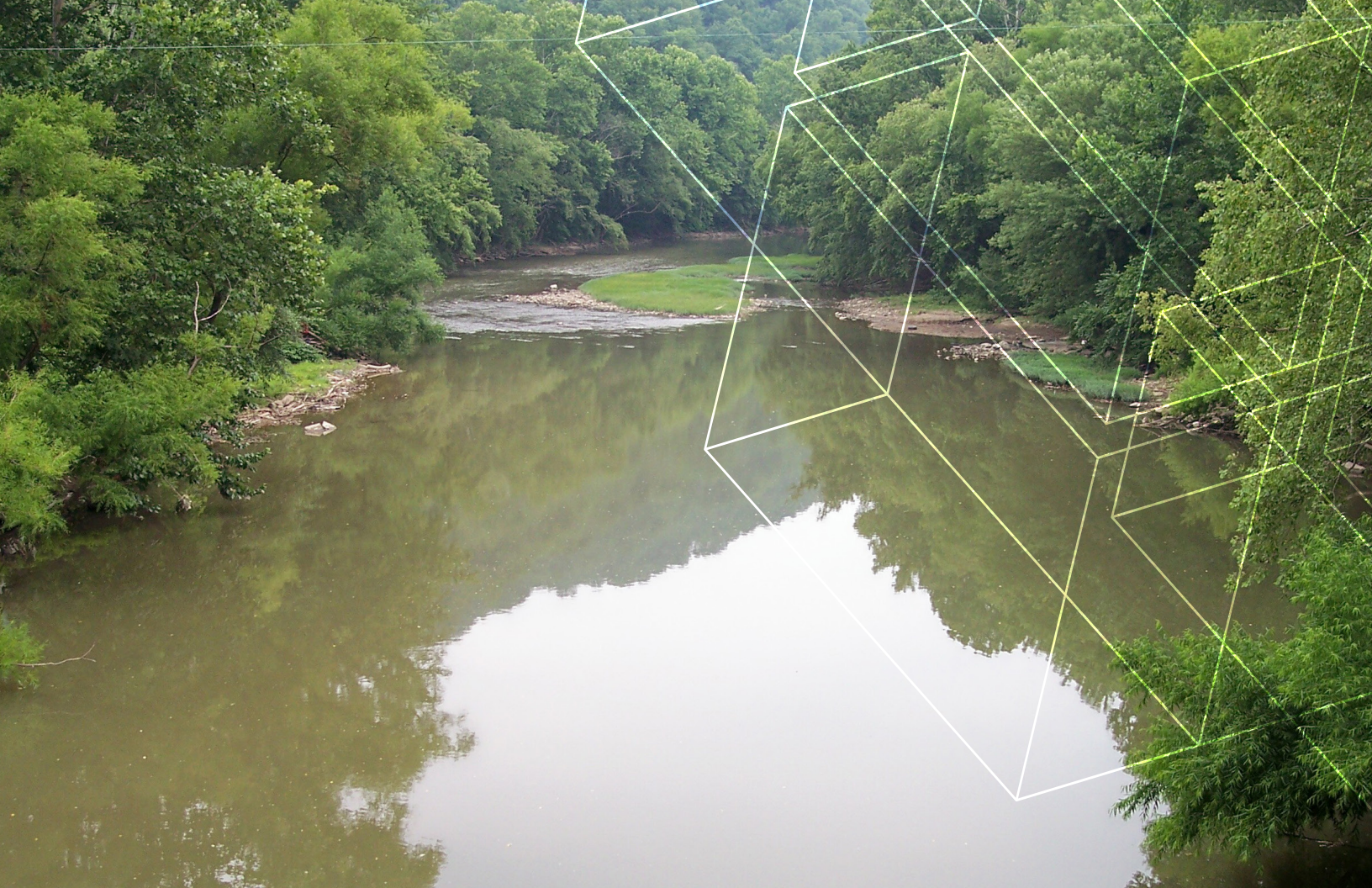
Extended Description:
Turner Highwall

Line	Comm Ln Desc	Qty	Unit Issue	Unit Price	Ln Total Or Contract Amount
8	West Run #2				0.00

Comm Code	Manufacturer	Specification	Model #
81100000			

Commodity Line Comments: N/A

Extended Description:
West Run #2



THRASHER

WEST VIRGINIA DEPARTMENT OF ENVIRONMENTAL PROTECTION

CEOI 0313 DEP2400000007 - AML Contract North 3

Submitted by:
The Thrasher Group, Inc.
August 30, 2023

August 30, 2023

Attn: Mr. Josh Hager III
Department of Administration, Purchasing Division
2019 Washington Street East | Charleston, WV 25305-0130

PRIORITIZE THE WVDEP

GET EFFECTIVE RESULTS

WORK AS YOUR PARTNER

*RE: West Virginia Department of Environmental Protection - CEOI 0313 DEP2400000007
AML Contract North 3*

Dear Mr. Hager and Selection Committee Members:

The Thrasher Group, Inc. is pleased to present our qualifications to the West Virginia Department of Environmental Protection for the AML Contract North 3 consisting of the following projects:

- | | |
|--|------------------------------|
| » Albright (Fortney) Refuse and Structures | » Jadot Highwall and Portals |
| » Cowger Highwall & Portals | » Miller Highwall & Portal |
| » Dotson Tipple Phase II | » Turner Highwall |
| » Granville (Buzzo) Clogged Stream | » West Run #2 |

As a West Virginia-based company that has been serving the state for nearly 40 years, Thrasher understands the landscape of the area and has the ability to provide the necessary services to restore the safety of the communities where we live and work. We have a long history with this region of West Virginia, having worked on projects of a similar scope all across the northern portion of the state.

The Thrasher team has vast experience completing NEPA documentation, providing survey and mapping services, as well as construction inspection in the Mountain State. Part of this experience comes from the numerous AMLER projects we have completed with the West Virginia Department of Environmental Protection (WVDEP). Our team will carry over the same successful approach and methodology used in our past WVDEP projects to ensure that this group of projects is completed to the highest level of quality of standards. With three offices scattered throughout northern West Virginia, our team is in close proximity to each project location — allowing us to easily be on-site to manage any project and handle any issues that may arise.

We appreciate the opportunity to continue our partnership with the WVDEP and look forward to further speaking with you about the needs for these projects.

Sincerely,
The Thrasher Group, Inc.



Richard Hovatter, PE
Principal and Project Manager

SECTION .01

*Qualifications, Experience,
and Past Performance*



THRASHER



300+

EMPLOYEES

- 36 Licensed Professional Engineers
- 10 Licensed Professional Surveyors
- 6 Licensed Professional Architects
- 2 Licensed Professional Landscape Architects

MAIN POINT OF CONTACT:

Richard Hovatter, PE
Principal and Program Manager
RHovatter@thethrashergroup.com
Cell: 304-669-6848
Office: 304-205-8809



40

YEARS

of delivering successful projects



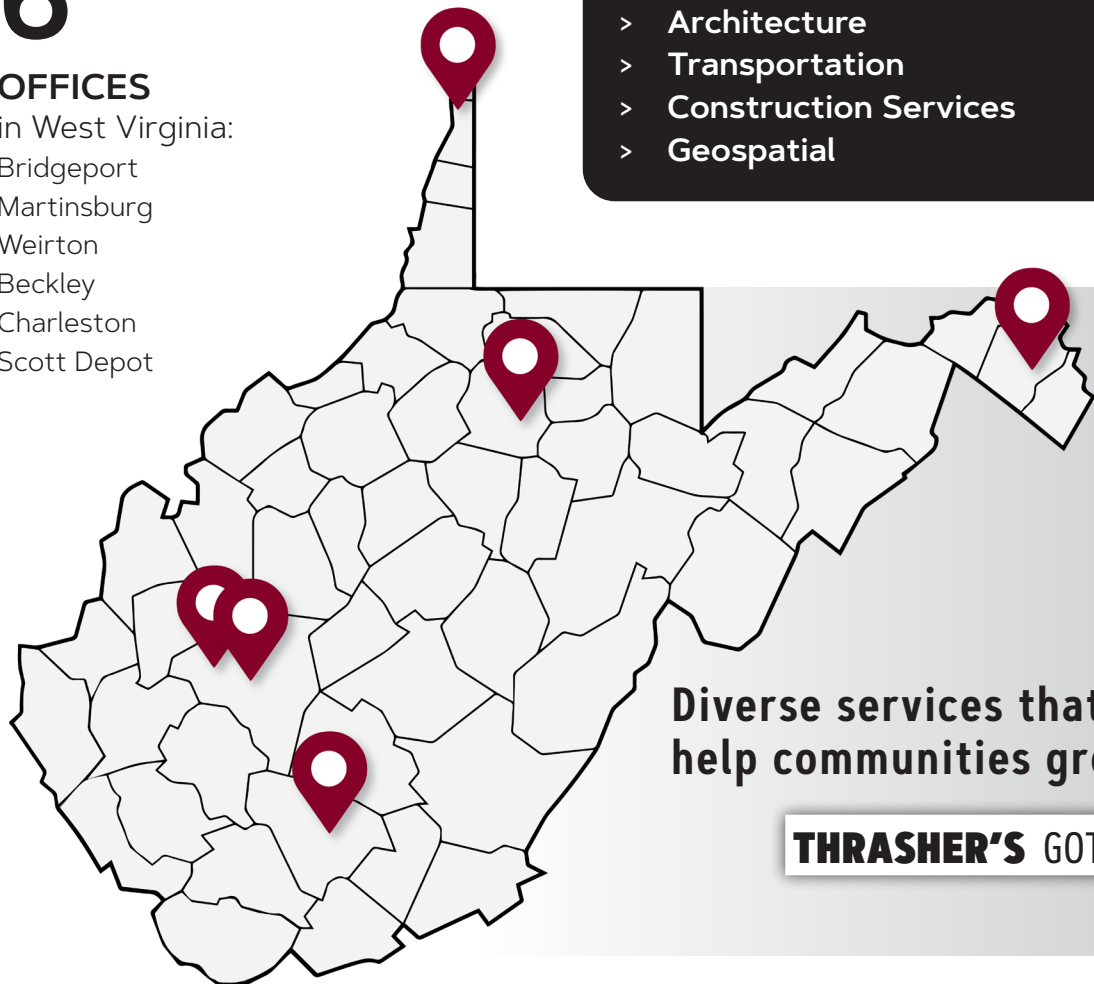
6

OFFICES

in West Virginia:
Bridgeport
Martinsburg
Weirton
Beckley
Charleston
Scott Depot

OUR SERVICES

- > Site Engineering
- > Environmental
- > Survey
- > Utility Engineering
- > Architecture
- > Transportation
- > Construction Services
- > Geospatial



Diverse services that
help communities grow.

THRASHER'S GOT IT

COMPANY HISTORY

With a commitment to building business through “successful projects and repeat clientele,” H. Wood Thrasher, PE and the late Henry A. Thrasher, PE, formed Thrasher Engineering, Incorporated in Clarksburg, West Virginia in 1983. Since that time, the company — now known as The Thrasher Group, Inc. — has transformed into one of the Mid-Atlantic region’s largest full-service privately owned architectural and engineering firms.

Thrasher has grown from its original three employees to a current staff of over 300 and continues to prosper. Instilled in each employee is a commitment to maintaining the highest standards of professional service. Our team has the experience, knowledge, versatility, and integrity to get the job done. With a 39-year history of driving infrastructure development for public and private clients, we have a reputation of keeping our word and completing projects on time and on budget.





AML DESIGN

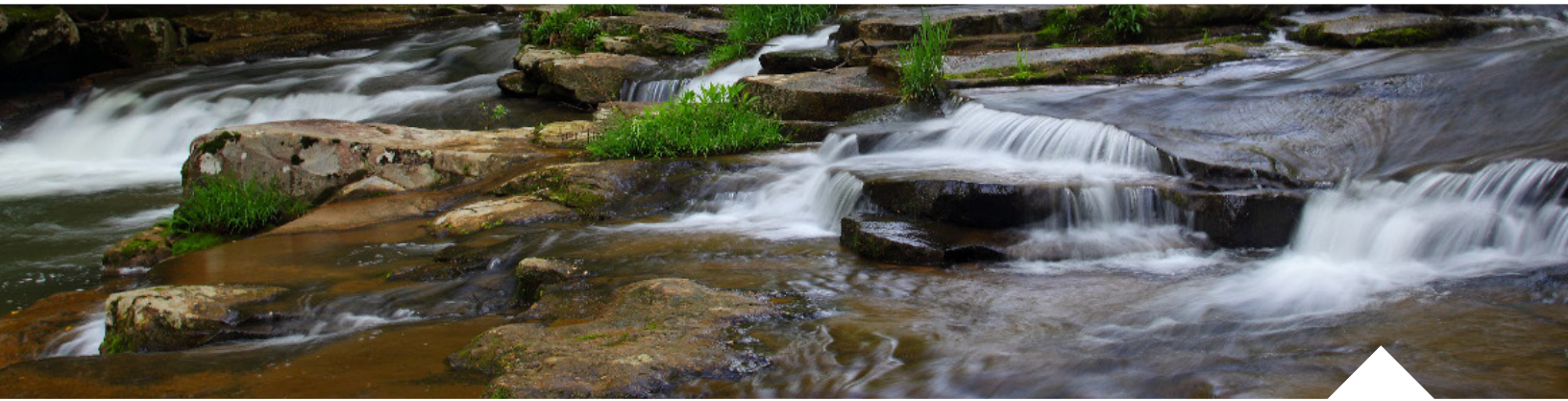
The Thrasher Group has provided design services to a number of Abandoned Mine Lands projects over the years. We are leaders in the industry, having completed projects for emergency repairs, using AML grants, and as part of the Abandoned Mine Lands Economic Revitalization project.

Our team has been a part of all types of AML work, including, but not limited to:

- » Highwalls
- » Portals
- » Slope Stabilization
- » Landslides
- » AMD Treatment
- » Refuse and Dump Improvements
- » Drainage Control
- » Burning Refuse Remediation

Drainage Design: All AML projects completed by Thrasher have required design of drainage structures. These have included vegetated, grouted, and riprap channels, as well as culverts and storm sewers. Drainage calculations are completed to properly size all conveyances.

Permitting: the permitting process can delay projects if they are not submitted correctly or in a timely manner. Thrasher takes pride in our ability to quickly obtain permits for our clients. We are able to utilize our excellent relationship with the WVDEP for NPDES permits as well as our relationship with the West Virginia Division of Highways for entrance and drainage permits. We are also experienced in obtaining Army Corp of Engineers permits from both the Pittsburgh and Huntington District Offices for stream bank restoration, wetland mitigation, and construction, linear transportation, and utility line projects, temporary construction access, and dewatering.



ENVIRONMENTAL SERVICES

In today's ever-changing regulatory landscape, compliance with federal and state environmental laws is critical to the success of projects. Compliance can often seem at odds with the project vision and financial constraints. The Thrasher team partners as a technical and regulatory advocate to overcome obstacles and guide our clients through complicated policies to achieve their goals. From initial investigations to final design, our environmental experts are there to assist in all facets of our clients' projects. Our team has developed relationships with academic consultants from multiple universities that are here to aid in specialized assessments.

Thrasher offers a range of environmental services, from abandoned mine land reclamation to stream and wetland delineations and everything in between. We have extensive experience with site assessments, permitting, and every aspect of environmental work that your project will encompass.

In addition, our team has a host of experience with Abandoned Mine Land (AML) projects and are familiar with the intricacies involved

Thrasher has completed more NEPA evaluations for AMLER projects than anyone in the state.

Environmental Services:

- > All Appropriate Inquiry (AAI)
- > Environmental Site Assessments
- > NEPA Compliance for Publicly Funded Projects
- > Ecological Studies
- > Brownfield Redevelopment
- > Industrial Hygiene and Demolition Planning
- > Underground Storage Tank (UST) Consulting Services
- > Wetland Delineation, Design, and Mitigation
- > Remediation Investigation, Feasibility Studies, and Design
- > Hydrogeologic and Geologic Investigations
- > Groundwater Monitoring
- > Sampling and Laboratory Analysis
- > Solid and Hazardous Waste Management
- > SPCC, GPP, SWPPP, GWPP, SWPPP Environmental Compliance
- > Coal Combustion Residuals Rule Compliance (CCR)
- > Stream Assessments, Design, and Mitigation
- > Erosion and Sediment Control Plans
- > Voluntary Remediation Program
- > Uniform Environmental
- > Covenants Act
- > CERCLA Preliminary Assessment
- > CERCLA Site Investigation



ENVIRONMENTAL PERMITTING

The Environmental Division of the Thrasher Group provides permitting, consulting, and assessment services to a multitude of clients spanning the Mid-Atlantic region. With a combined 40 years of permitting experience, Thrasher's Environmental Scientists, Permitting Leads, and Project Managers are able to take even the most complex and time restrictive projects and provide clients with cost effective and timely solutions.

Federal Permitting

- > National Historic Preservation Act - Section 106 Consultation
 - > *State Historic Preservation Office or Division of Culture and History*
- > Endangered Species Act - Section 7 and Section 9 Consultations
 - > *United States Fish and Wildlife Service*
- > Clean Water Act - Section 404 Permits
 - > *United States Army Corps of Engineers*

- > National Environmental Policy Act - Categorical Exclusions, Environmental Assessments, and Short Environmental Assessment Forms
 - > *United States Army Corps of Engineers; Federal Aviation Administration; Division of Transportation; and Federal Communications Commission*

State and Local Permitting

- > State Responsible Regulations of the Clean Water Act - Section 401 and 402 Permits
- > State Level Rare, Threatened, or Endangered Species Consultations
- > State Level Aquatic Resource Encroachment and Impact Permits
- > State Level Roadway Encroachment, Crossing, and Occupancy Permits
- > State Level Industrial Waste Discharge Permits
- > Local Level Floodplain or Building Permits



CONSTRUCTION ADMINISTRATION

Effective management of our projects ensures that both clients and contractors work in an efficient and safe manner. From pre-construction activities - such as bid conferences and surveys - to inspections, job progress reviews, and on through final completion, our goal is work that proceeds in accordance with plans and specifications.

At Thrasher, we inspect and manage a wide variety of projects designed by our firm in addition to projects for contractors and other designers. We have certified project representatives responsible for overseeing every element of design integrity. Our methods have earned the respect of not only our clients, but contractors and project owners alike.

Construction Inspection Services:

- > Construction Materials
- > Pipelines
- > Structural Steel & Concrete
- > Paving
- > Drainage
- > Embankments
- > Work Zone Safety & Traffic Control
- > Erosion and Soil Control

Quality Control and Assurance Methods:

- > Regularly Scheduled Planning and Progress Meetings
- > Engineering During Construction
- > Daily Logs and Progress Sheets
- > Cut Sheets
- > Quantity Tracking



Thrasher has an internal Quality Control Policy to ensure our projects move forward efficiently and effectively. The objectives of this policy are to continually improve the quality of the design and technical deliverables Thrasher provides to its internal and external clients.

This policy illustrates the basic requirements for quality control in our projects. It describes the methods for checking and reviewing product elements and client deliverables, and includes rigorous comprehensive written check-lists for each stage of the design process, document production, and construction activities.

The purpose of these QC methodologies is to reduce or eliminate the potential for errors, omissions, ambiguities, and inconsistencies.

The policy outlines three main areas:

- > **General**
Defines the purpose, intent and limitations, definitions, and implementation
- > **Project Management Procedures**
Presents required procedures specific to this practice that allow for the efficient and accurate management of projects
- > **Check and Final Review Procedures**
Presents required procedures specific to this practice that are used to insure technical accuracy of the work product



Budgeting

Construction estimating and budgeting is one of the most important parts of what Thrasher can provide you. Without accurate budgets, there is no tool to guide the design process and issues will be inevitable. By including cost estimating as a part of the project scope from day one, we are able to avoid issues before they arise and keep your project within a reasonable cost.

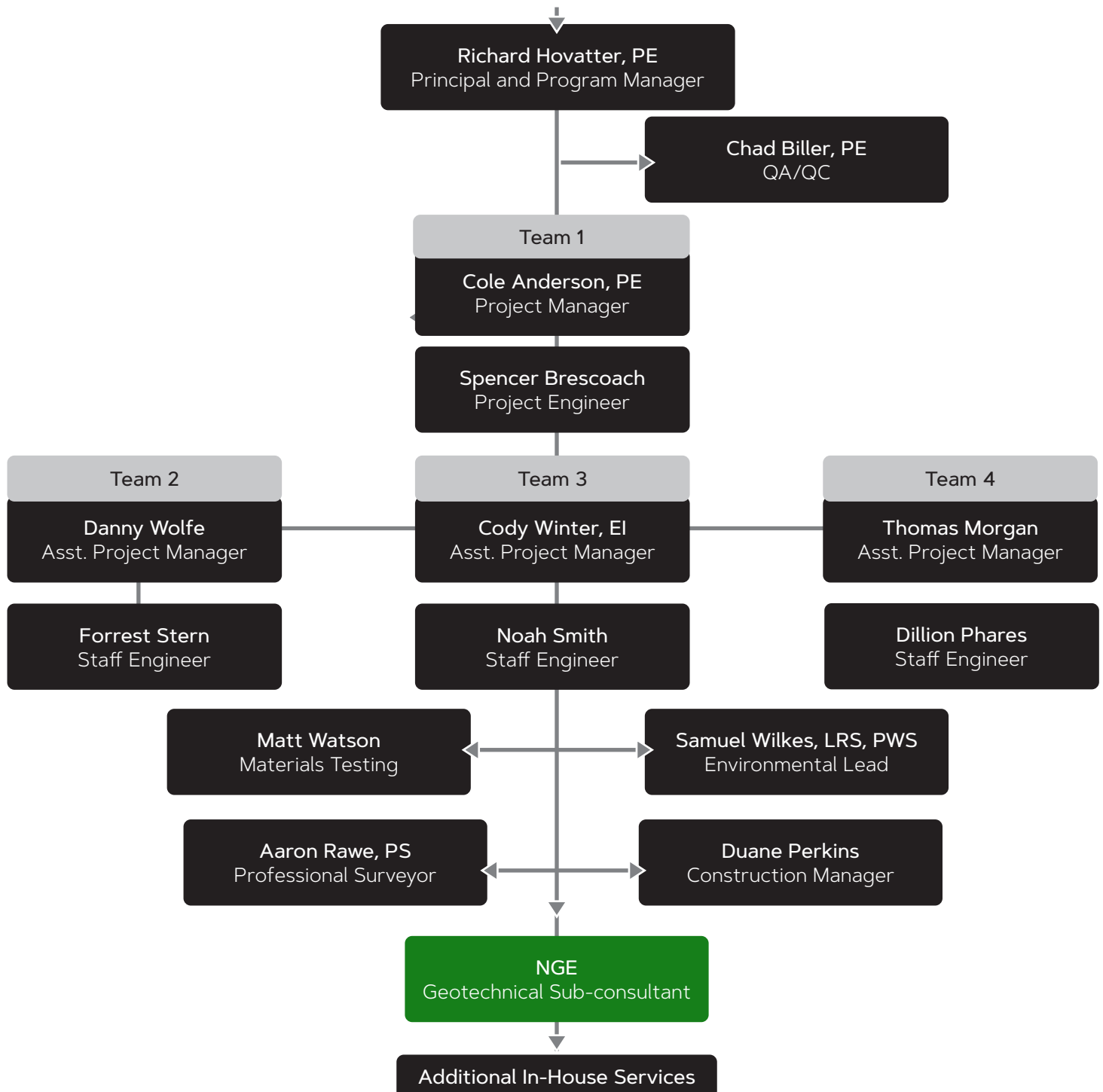
And our estimates go beyond the typical system - rather than simply providing cost per foot or lump sum price, Thrasher will provide contractor-grade estimates that look at every part of the project. We do detailed take-offs of materials and look at every man hour needed to complete a project and factor this in accordingly. Then, we use our thorough understanding of the local market and material costs to accurately design within your budget.



Scheduling

Thrasher realizes the importance of establishing and maintaining project schedules. Time means money and making sure we help you spend your money wisely is our number one goal. Because of this, our team puts an emphasis on ensuring project timetables are met and communication is upheld throughout the process.

To accomplish these goals, Thrasher utilizes scheduling to track every stage of a project - from design and bidding through construction completion. Keeping our owners up to speed with progress is always our priority and ensures occupancy and owner supplied equipment are scheduled accordingly.





RICHARD HOVATTER, PE

PRINCIPAL AND PROGRAM MANAGER

Certifications

- > Project Management Course Specialization
- > Leadership Development for Engineers - Rice University
- > Engineering Project Management - Rice University
- > OSHA 10 Hour Construction Worker Training
- > CPR and First-Aid

PROFESSIONAL OVERVIEW

Richard "RJ" Hovatter, PE, has spent most of his career working with private and public clients on various site development projects. His team of engineers are able to develop strategies to fit the needs of each client. RJ is well versed in site design, grading, storm water and erosion and sediment control plans. He has also managed over 35 Abandoned Mine Land Emergency and Abandoned Mine Land projects across West Virginia, Maryland, and Ohio. His experience provides clients with the reassurance that projects are inspected thoroughly.

EXPERIENCE

WVDEP AML Lyons Landslide

Project Manager | Harrison County, WV

WVDEP AML Shinns Run Portals

Project Engineer | Harrison County, WV

WVDEP AML Isaac Creek Landslide

Principal | Harrison County, WV

WVDEP AML Canyon Refuse and Dump

Project Manager | Monongalia County, WV

WVDEP Subsidence Depressions

Project Manager | Various Locations, WV

WVDEP AML Dansbranch Landslide Emergency Project

Project Manager | Mingo County, WV

WVDEP AML Bloomingrose (Tincher) Burning Refuse Project

QA/QC | Boone County, WV

RICHARD HOVATTER, PE

PRINCIPAL AND PROGRAM MANAGER

Search: Details

Name:	RICHARD G. HOVATTER, JR	
WV Professional Engineer:	PE License Number: 018460	
	PE License Status: Active	
	PE Issue Date: 12/17/2009	
	PE Expiration Date: 12/31/2024	
Continuing Education Claim:	Qualifying Hours from Last Renewal or Reinstatement: 30.17	
	Carryover Hours for Next Renewal: 0.17	
	Last Renewal or Reinstatement Date*: 12/31/2022	
WV Engineer Intern:	EI Certification Number: 8494	
	EI Issue Date: 12/15/2005	
Primary Address of Record:	74 FAWN RIDGE ROAD MANNINGTON, WV 26582	
Primary Employer of Record:	THE THRASHER GROUP, INC. 600 WHITE OAKS BOULEVARD PO BOX 940 BRIDGEPORT, WV 26330	
	<div><div>*</div><div>This date reflects the most recent license renewal (or reinstatement) date for this licensee. Continuing education hours earned prior to this date may not be used for future renewals.</div></div>	

This data was retrieved on 8/24/2023.



CHAD BILLER, PE

QA/QC

Education

Bachelor of Science,
Civil Engineering
West Virginia University

Registrations

Professional Engineer:
> West Virginia
> Ohio

Affiliations

- > American Society of Highway Engineers
- > American Society of Civil Engineers
- > National Society of Professional Engineers

PROFESSIONAL OVERVIEW

Chad Biller, PE has extensive experience in all aspects of civil engineering, but his primary emphasis lies in site development, transportation, and airport projects. Chad's expertise has made him a go-to source for the design and site layout of numerous residential and commercial sites all throughout the Mid-Atlantic region. His knowledge of site design in the mountainous terrain of West Virginia and the surrounding Appalachian basin is second to none.

As part of his role assisting our Land Development Market, Chad is responsible for the development of project design, production of project specifications and plans, bidding, quality assurance/quality control, and project monitoring. He brings a deep breadth of knowledge to the table, including creative problem solving skills, and decades of hands-on experience implementing unique project delivery methods individually tailored for his clients.

EXPERIENCE

WVDEP AML Isaac Creek Landslide

QA/QC | Harrison County, WV

WVDEP AML Squires Creek

QA/QC | Preston County, WV

WVDEP AML Anglins Run

Principal | Nicholas County, WV

WVDEP AML Stowe Landslide

QA/QC | Logan County, WV

WVDEP AML Landgruff Refuse Pile

QA/QC | McDowell County, WV

WVDEP AML Owl Creek

QA/QC | Monongalia County, WV

WVDEP AML Bloomingrose (Tincher) Burning Refuse Project

QA/QC | Boone County, WV

CHAD BILLER, PE

QA/QC

Search Details

Name:	CHADWICK D. BILLER
WV Professional Engineer:	PE License Number: 013620
	PE License Status: Active
	PE Issue Date: 02/23/1998
	PE Expiration Date: 12/31/2024
Continuing Education Claim:	Qualifying Hours from Last Renewal or Reinstatement: 35.00
	Carryover Hours for Next Renewal: 5.00
	Last Renewal or Reinstatement Date*: 12/15/2022
WV Engineer Intern:	EI Certification Number:
	EI Issue Date:
Primary Address of Record:	150 SERENITY DRIVE BRIDGEPORT, WV 26330
Primary Employer of Record:	THE THRASHER GROUP, INC. 600 WHITE OAKS BOULEVARD PO BOX 940 BRIDGEPORT, WV 26330
	* This date reflects the most recent license renewal (or reinstatement) date for this licensee. Continuing education hours earned prior to this date may not be used for future renewals.

This data was retrieved on 8/27/2023.



COLE ANDERSON, PE

PROJECT MANAGER | **TEAM 1**

Education

Bachelor of Science,
Civil Engineering Technology
Fairmont State University

Registrations

Professional Engineer:
> West Virginia

PROFESSIONAL OVERVIEW

Cole Anderson currently serves as a Project Manager for the firm. Cole has experience with construction monitoring, construction management, site design, and quality assurance for site development and energy clientele. He is the main point of contact for clients and acts as a liaison to the project team. Cole has an impressive background in site design. He is capable of managing a project team and composing the designs. Cole provides project updates with report reviews and clearly communicates project developments to clients. He has first-hand experience of the project process from concept to completion.

EXPERIENCE

Tamela Access Road Retaining Wall

Project Manager | Doddridge County, WV

Coaltrain Slip Repair

Project Engineer | Taylor County, WV

Eight Mile Road Upgrades

Project Manager | Wetzel County, WV

Morgan Ashland Road Upgrades

Project Manager | Wetzel County, WV

Morgan Ashland Road Retaining Walls

Project Manager | Wetzel County, WV

Dry Run Road Upgrades

Project Manager | Tyler County, WV

Dry Run Road Retaining Wall

Project Manager | Tyler County, WV

Next-Allen Run Road Upgrade

Project Manager | Tyler County, WV

Riggins Run Road Upgrade

Project Manager | Doddridge County, WV

Central Station Road Improvements

Project Manager | Doddridge County, WV

COLE ANDERSON, PE

PROJECT MANAGER | TEAM 1

Name:	JAMES COLE ANDERSON
WV Professional Engineer:	PE License Number: 025316
	PE License Status: Active
	PE Issue Date: 06/15/2022
	PE Expiration Date: 12/31/2024
Continuing Education Claim:	Qualifying Hours from Last Renewal or Reinstatement: 0.00
	Carryover Hours for Next Renewal: 0.00
	Last Renewal or Reinstatement Date*: 12/14/2022
WV Engineer Intern:	EI Certification Number: 10190
	EI Issue Date: 05/21/2018
Primary Address of Record:	600 WHITE OAKS BOULEVARD BRIDGEPORT, WV 26330
Primary Employer of Record:	THE THRASHER GROUP, INC. 600 WHITE OAKS BOULEVARD BRIDGEPORT, WV 26330
	<p>* This date reflects the most recent license renewal (or reinstatement) date for this licensee. Continuing education hours earned prior to this date may not be used for future renewals.</p>

This data was retrieved on 8/29/2023.



SPENCER BRESCOACH

PROJECT ENGINEER | TEAM 1

Education

Bachelor of Science,
Civil Engineering Technology
Fairmont State University

Registrations

Professional Engineer:
> West Virginia

PROFESSIONAL OVERVIEW

Spencer Brescoach is a Project Engineer at The Thrasher Group in the Energy and Land Development Markets. He has extensive proficiency in site and designing road upgrades and improvements. Spencer is responsible for overseeing project development from conception through generating site designs. Spencer assists project leaders in designing and revising site plans and coordinating with other divisions.

Spencer effectively communicates with project leaders and clients to provide updates regarding site designs. His experience in applying designs to project plans has made Spencer an essential part of Thrasher's Site Division.

EXPERIENCE

Tamela Access Road Retaining Wall

Project Engineer | Doddridge County, WV

Coaltrain Slip Repair

Project Engineer | Taylor County, WV

Eight Mile Road Upgrades

Project Engineer | Wetzel County, WV

Morgan Ashland Road Upgrades

Project Engineer | Wetzel County, WV

Morgan Ashland Road Retaining Walls

Project Engineer | Wetzel County, WV

Dry Run Road Upgrades

Project Engineer | Tyler County, WV

Dry Run Road Retaining Wall

Project Engineer | Tyler County, WV

Next-Allen Run Road Upgrade

Project Engineer | Tyler County, WV

Riggins Run Road Upgrade

Project Engineer | Doddridge County, WV

Central Station Road Improvements

Project Engineer | Doddridge County, WV



DANNY WOLFE

ASSISTANT PROJECT MANAGER | **TEAM 2**

PROFESSIONAL OVERVIEW

Danny Wolfe is a Project Engineer for Thrasher's Energy and Land Development Markets. He provides layout and design based on the needs and budget of the clients. Danny has over two decades of experience designing and coordinating residential, commercial, and energy development projects to ensure project goals are accomplished within the client's time frame and funding parameters.

EXPERIENCE

WVDEP AML Kempton Refuse Rehabilitation

CAD Designer | Tucker County, WV

WVDEP AML Long Run #3 Highwall

CAD Designer | Taylor County, WV

Chevron Well Pads Development

CAD Designer | Wetzel and Marshall Counties, WV

Enerplus Resources Well Pad Development

CAD Designer | Centre County, PA

Chesapeak Energy Well Pad Development

CAD Designer | Union, Delaware, and Licking Counties, OH

Eclipse Resources Well Pad Development

CAD Designer | Monroe and Belmont Counties, OH



Education

Bachelor of Science,
Environmental Engineering
Shepherd University

FORREST STERN

STAFF ENGINEER | TEAM 2

PROFESSIONAL OVERVIEW

Recently joining the Thrasher team in the Land Development Market, Forrest serves as a staff engineer and has experience with slip repairs, soil compaction, and on large-scale private developments.

He effectively communicates with clients, contractors, and this peers regarding site designs generated in the AutoDesk Suite.

EXPERIENCE

Dollar General Hedgesville

Staff Engineer Berkeley County, WV

Dollar General Falling Waters

Staff Engineer | Berkeley County, WV

Dollar General Glengary

Staff Engineer | Berkeley County, WV

Dollar General Ridersville

Staff Engineer | Berkeley County, WV

Railyard Event Center

Staff Engineer | Randolph County, WV

United Hospital Center - Elkins Urgent Care

Staff Engineer | Randolph County, WV



CODY WINTER, EI

ASSISTANT PROJECT MANAGER | **TEAM 3**

Education

Bachelor of Science,
Civil Engineering Technology
Fairmont State University

Registrations

Engineering Intern:
> West Virginia

Certifications

- > ACI Field Testing Technician
- > ACI Aggregate Base
- > WVDOH S.A.C. Technician
- > WVDOH PCC Inspector
- > WVDOH TRET - Level III
- > OSHA 10
- > SafeLand USA Training
- > First-Aid / CPR
- > Radiation Safety
- > Antero Safety 2017
- > AEP Safety 2017
- > UTV Safety Training
- > FE Exam

PROFESSIONAL OVERVIEW

Cody Winter, EI currently serves as a Project Engineer in The Thrasher Group's Land Development Market. Cody has an impressive background in the site design of industrial parks with airport access, runway rehabilitations, taxiway lighting upgrades, tree clearing and earth work for approach and departure surfaces, site permitting, and commercial site layouts. Cody has a familiarity with FAA standards, and is working directly under Thrasher's aeronautical experts to learn permitting and regulatory standards. He effectively communicates with clients, project's contractors, and the project team regarding site designs generated in the AutoDesk Suite.

Prior to becoming a Project Engineer, Cody spent time working on various project sites as a Project Representative. His time in this role gave him invaluable experience and familiarity with the construction process – giving him the ability to recognize potential issues before they have the opportunity to manifest into construction sets backs.

him a unique perspective that proves especially valuable during the design phase of projects. Wade is able to utilize his field experience to ensure that projects are designed with safety, budgets, and accurate timelines in mind.

EXPERIENCE

Harrison County Commission Industrial Park

Project Engineer | Harrison County, WV

Hatfield-McCoy Regional Recreation Authority Ashland Resort

Project Engineer | McDowell County, WV

Hazel Ruby McQuain Riverfront Park Improvements

Project Engineer | Monongalia County, WV

Enrout Properties Harmony Grove Interchange

Project Engineer | Monongalia County, WV

Suncap Property Group 461 High Street Parking and Intersection Improvements

Project Engineer | Monongalia County, WV

WestRidge Multi-Use Development

Project Engineer | Monongalia County, WV



NOAH SMITH

STAFF ENGINEER | TEAM 3

Education

Bachelor of Science,
Mechanical Engineering
West Virginia University

PROFESSIONAL OVERVIEW

Recently joining the Thrasher team in the Land Development Market, Noah serves as a staff engineer and has experience with slip repairs, soil compaction, and on large-scale private developments.

He effectively communicates with clients, contractors, and this peers regarding site designs generated in the AutoDesk Suite.

EXPERIENCE

Dollar General Hedgesville

Staff Engineer Berkeley County, WV

Dollar General Falling Waters

Staff Engineer | Berkeley County, WV

Dollar General Glengary

Staff Engineer | Berkeley County, WV

Dollar General Ridersville

Staff Engineer | Berkeley County, WV

Dollar General Sam Black Church

Staff Engineer | Greenbrier County, WV

Railyard Event Center

Staff Engineer | Randolph County, WV

United Hospital Center - Elkins Urgent Care

Staff Engineer | Randolph County, WV



Education

Bachelor of Science,
Mechanical Engineering
Fairmont State University

THOMAS MORGAN

ASST. PROJECT MANAGER | **TEAM 4**

PROFESSIONAL OVERVIEW

Thomas "TJ" Morgan currently serves as a Project Engineer in the Land Development Market for Thrasher. He has an extensive background in the design of storm networks, corporate and retail centers, road upgrades, well pads, pipelines, and access roads. TJ's main focus is assisting municipalities and private clients with stormwater systems by ensuring they are working effectively and efficiently. To make sure this happens, TJ directly coordinates between project managers, staff engineers, and any other employees and stakeholders involved.

TJ has a deep understanding of site layout, design, and permitting. He has hands-on experience and active involvement in the development of various site plans, grading plans, erosion and sediment control measures, stormwater network design, and project specifications. TJ spends much of his time analyzing existing and proposed conditions to modify or propose features and structures to properly convey surface runoff from varying storm events.

EXPERIENCE

WestRidge Development Phases 1-4

Stormwater Project Engineer | Monongalia County, WV

Riverfront 47 Development

Stormwater and Utilities Engineer | Allegheny County, PA

ESCG-2 Erosion and Sediment Controls Pipelines and Well Sites

Project Engineer | Green County, PA

Meadowview Residential Development

Project Engineer | Harrison County, WV

Village of Beech Bottom Stormwater Project

Project Engineer | Brooke County, WV



DILLION PHARES

STAFF ENGINEER | **TEAM 4**

Certifications

- > WVDOH Aggregate Sampling Inspector
- > WVDOH Asphalt Field and Compaction Technician (A.F.C.T.)
- > WVDOH PCC Inspector
- > WVDOH Soil and Aggregate Compaction Technician (S.A.C.T.)
- > ACI Concrete Field Testing Technician Grade I
- > WVDOH Radiation Safety
- > OSHA 10
- > First Aid/CPR/AED
- > PEC Safeland

PROFESSIONAL OVERVIEW

Dillon Phares is a Engineering Technician serving in Thrasher's Energy Market. He has a wealth of knowledge gained from his time spent in the inspection world, with a particular emphasis in roadways. Dillon brings a wide variety of experience bolstering the Energy Engineering team.

Dillon has specialized in the oil and natural gas industry, working with nearly all operators in the area. He has acted as an on-site representative for several Antero Road group jobs, providing a strong work ethic, consistent communication, and qualified expertise. Dillon's skills have translated well to his work in the office.

EXPERIENCE

Tamela Access Road Retaining Wall

Staff Engineer | Doddridge County, WV

Coaltrain Slip Repair

Staff Engineer | Taylor County, WV

Eight Mile Road Upgrades

Staff Engineer | Wetzel County, WV

Morgan Ashland Road Upgrades

Staff Engineer | Wetzel County, WV

Morgan Ashland Road Retaining Walls

Staff Engineer | Wetzel County, WV

Dry Run Road Upgrades

Staff Engineer | Tyler County, WV

Dry Run Road Retaining Wall

Staff Engineer | Tyler County, WV

Next-Allen Run Road Upgrade

Staff Engineer | Tyler County, WV

Riggins Run Road Upgrade

Staff Engineer | Doddridge County, WV

Central Station Road Improvements

Staff Engineer | Doddridge County, WV



SAMUEL WILKES, LRS, PWS

ENVIRONMENTAL LEAD

Education

Master of Science
Environmental Science & Policy
Johns Hopkins University

Bachelor of Science,
Earth & Environmental Science
Wilkes University

Registrations

- > Professional Wetland Scientist
- > Licensed Remediation Specialist

Affiliations

- > Society of Wetland Scientists

PROFESSIONAL OVERVIEW

Sam Wilkes, LRS, PWS is an Environmental Project Manager within Thrasher's Land Development Market. Sam is a Professional Wetland Scientist and a WVDEP certified Licensed Remediation Specialist. He brings over 23 years of consulting experience as a project manager and senior environmental scientist, providing technical support to watershed management, restoration, natural resource conservation, and hazardous materials programs. Sam is experienced at providing project oversight and managing field teams and contractors collecting wetland, stream quality, environmental media data, and general site condition data for site characterization. He regularly interacts with his clients and manages project budgets and staffing plans, while providing quality control review of project deliverables. Sam understands the importance of delivering projects on time and providing a proactive management style to his clients.

EXPERIENCE

Cabin Creek Healthcare System NEPA Environmental Assessment
Project Manager | Kanawha County, WV

WV State University NEPA Environmental Assessment
Project Manager | Kanawha County, WV

WVDOH NEPA Re-Evaluation Inwood Bypass
Project Manager and Document Lead | Roane County, WV

WVDOH NEPA Study Col. Ruby Bradley Bridge
Project Manager and Document Lead | Roane County, WV

Coalfield Development Corporation Black Diamond Property WVVRP Site Remediation
Environmental Project Manager | Cabell County, WV

Enrout Properties Morgantown Industrial Park
Environmental Project Manager | Monongalia County, WV

Huntington Municipal Development Authority ACF Development
Environmental Project Manager | Cabell County, WV

Elk Terminal Voluntary Remediation Program
Environmental Project Manager | Wood County, WV

SAMUEL WILKES, LRS, PWS

ENVIRONMENTAL LEAD

Renewal



West Virginia
Department of
Environmental Protection

WILKES, SAMUEL PETER
Licensed Remediation Specialist
Registration Number: 295



Director, Division of Land Restoration

10/01/2022 - 09/30/2024

Date Issued - Date Expires



DUANE PERKINS

CONSTRUCTION MANAGER

Education

Rappahannock Community College,
Survey Studies

Old Dominion University,
Survey Studies

Certifications

- > OSHA Hazardous Waste Operation and Emergency Response
- > US Department of Labor Mine Safety and Health Administration
- > Safe Land USA (PEC Premier)
- > First Aid-CPR/AED

PROFESSIONAL OVERVIEW

Duane Perkins joined Thrasher in 1992 and currently serves as a Construction Manager for the firm. He is one of the longest employed managers at the firm. He has extensive field experience on numerous public utility pipelines, natural gas projects, wetland and grassland easement surveys, and highway work. He possesses a wide range of utility construction and field survey experience including an extensive knowledge of the Atlantic Coast Pipeline. He has his fair share of as-built experience as a Crew Chief, but most of his time has been in a management role.

Duane's responsibilities as Construction Manager include assigning duties to the crews, interaction, and coordination with the client and/or their representatives, checking the crews' field work and assisting the crews as needed. He is one of those supervisors that everyone holds in high regard. He is not afraid to do the work himself, and he treats everyone with respect. He enables his crews, through information, supplies, and support, to ensure they are working efficiently and in the best interest of the clients and their projects.

EXPERIENCE

Atlantic Coast Pipeline

Field Supervisor | WV, VA, and NC

First Energy Utility Coordination

Utility Coordinator | Various Locations in WV

Deckers Creek Public Service District Valley View Acres Sanitary Sewer Lift Station and Force Main

Field Supervisor | Monongalia County, WV

Goff Pipeline Boundary Surveys

Field Survey Coordinator | Harrison County, WV

Town of Rowlesburg Water Line Extension

Construction Manager | Preston County, WV

Marshall County Public Service District #3 Water System Improvements

Construction Manager | Marshall County, WV

Marshall County Public Service District #3 McCreary Ridge Road Water

Construction Manager | Marshall County, WV



AARON RAWE, PS

PROFESSIONAL SURVEYOR

Education

Associates of Science,
Surveying Technology
Glenville State College

Registrations

Professional Surveyor:

- > West Virginia
- > Kentucky

Affiliations

- > West Virginia Society of
Professional Surveyors

Certifications

- > Safeland
- > OSHA Training
- > First Aid and Medical
Emergency Action Procedure

PROFESSIONAL OVERVIEW

Aaron Rawe serves as a Survey Project Manager for Thrasher working out of the Bridgeport office. Mr. Rawe's experience covers various aspects of surveying, including routing, as-builts, preliminary, construction stakeout and boundary of construction management. Mr. Rawe is experienced both in the field and orchestrating projects behind the scenes. Aaron brings over six years of pipeline and asset management experience to the team.

As part of his management role, Mr. Rawe also meets with project stakeholders, area residents, local utility companies, and the project engineers to ensure that schedules are being met and to regularly update all parties on construction status. Additionally, Mr. Rawe is progressively responsible for the coordination of field crews, data collection, site layouts, ALTA surveys, subsidence and topographic surveys.

Mr. Rawe also assists in the management of the Mapping Department here at Thrasher. He is responsible for the coordination between photogrammetrist and field crews in helping determine the placement of photo targets and items to be located for photo control. He helps process and QA, QC all data coming in from the field before delivering it to the photogrammetrist to use for the air trig of the projects.

EXPERIENCE

WVDEP Camden Slips

Survey Manager | Lewis County, WV

City of Morgantown Transfer Station

Survey Manager | Monongalia County, WV

Metro Towers Topo Control and Property Location Surveys

Survey Manager | Monongalia County, WV

ALTA Surveys

Survey Manager | Monongalia County, WV

Boy Scouts of America Welcome Center 200 Acre Site Survey, Topographic, and Utility Surveys

Survey Manager | Fayette County, WV

Ruby Memorial Hospital Building and Utility Location Surveys

Survey Manager | Monongalia County, WV

AARON RAWE, PS

PROFESSIONAL SURVEYOR

2023 WEST VIRGINIA PROFESSIONAL SURVEYOR 2023

The West Virginia Board of Professional Surveyors certifies that the individual listed below is a PROFESSIONAL SURVEYOR who has qualified for a license under Chapter 30, Article 13A, Code of West Virginia, and has met the requirements for license renewal for the period ending June 30, 2023



AARON J. RAWE
P.S. #2312



Board Members

Sefton Stewart, PS, Chairman

Tom Rayburn, PS, Secretary

Gary Facemyer, PE, PS

Lantz Rankin, PS

Douglas McElwee, Esq.

Issued
07/01/2022



Expires
06/30/2023

Executive Director
Amber Shawver Legg

2023

State of West Virginia
Board of Professional Surveyors



Expires:
06/30/2023

AARON J. RAWE
P.S.LIC. # 2312

Is a PROFESSIONAL SURVEYOR who has qualified for a license under Chapter 30, Article 13A, Code of West Virginia, and has met the requirements for license renewal for the period ending June 30, 2023

State of West Virginia
Board of Professional Surveyors
1124 Smith Street, Suite B127C
Charleston, WV 25301

Phone (304) 558-0350

Fax (304) 558-0352

Website: www.wvbps.wv.govEmail: wvbps@wv.gov



MATT WATSON

LABORATORY MANAGER

Affiliations

- > Builder's Supply Association
Board Member At Large

Certifications

- > ACI Field Testing Technician
- > ACI Concrete Strength Testing Technician
- > ACI Aggregate Base Testing Technician
- > KYTC Mix Design
- > WVDOH S.A.C. Technician
- > WVDOH PCC Inspector
- > WVDOH PCC Technician
- > WVDOH Aggregate Technician
- > WVDOH Aggregate Sampler
- > WVDOH TRET - Level III
- > Soil Compaction - Nuclear Radiation Gauge
- > NRMCA Field Testing Level II
- > OSHA 10
- > SafeLand USA Training
- > Williams Safety Trained
- > Antero Safety Trained

PROFESSIONAL OVERVIEW

Matthew Watson joined the team full-time as a Project Representative working on various inspections including rebar, caisson, soil compaction, concrete, fire proofing, masonry, steel, and others.

He is very knowledgeable in all areas of soil, concrete and aggregate testing, in both field and laboratory environments. His vast experience has exposed him to a wide range of earthwork conditions refining his judgment on soil classifications. His hands-on experience is bolstered by his ability to conduct field and lab Proctors, Atterberg Limits, and Gradations. He also has the capability of completing mix designs. Matt has served as the Bridgeport Lab Supervisor since 2018 where he is responsible for maintaining the Bridgeport and Scott Depot's AASHTO and Army Corps of Engineers accreditations. He performs all lab testing, project management, and over sees Materials Testing Technicians.

EXPERIENCE

Lynch Land Development West Side Development Phase I: Inspection and Materials Testing

Laboratory Manager | Monongalia County, WV

WVDOH Corridor H Soil/Concrete Inspection Technician

Laboratory Manager | Grant County, WV

West Ridge Development

800+ Acre Mixed-Use Development

Materials Testing | Monongalia County, WV

Oak Grove Compressor Station

Materials Testing / Field Coordinator | Marshall County, WV

WVDOH Ice's Ferry Bridge Inspection

Laboratory Manager | Monongalia County, WV

West View Lawless Road QA/QC

Laboratory Manager | Monongalia County, WV



Locations

West Virginia Office

650 MacCorkle Avenue West
St. Albans, WV 25177
P: (304) 201-5180
F: (304) 201-5182

Pennsylvania Office

171 Montour Run Road
Moon Twp, PA 15108
P: (412) 722-1970
F: (412) 722-1929

Company Overview

NGE was founded in the fall of 2002 by Amy Veltri and John Nottingham, a management team with a combined forty years of industry experience. The family-based entrepreneurial spirit that defined NGE's beginnings remains evident in the innovative solutions we deliver to our loyal clients each and every day. Advances in engineering, science and technology, coupled with regulatory, legal, and compliance pressures create increasingly complex challenges for businesses. NGE strives to keep pace with these changes, with an eye to supporting our clients' changing needs.

NGE has grown into a dependable and flexible environmental and geotechnical consulting firm providing a wide range of professional services, including Environmental Consulting, Geotechnical Engineering and Environmental Construction / Remediation. With clients across the nation, NGE added a second office location in West Virginia in 2003, and seeks to grow in the future by providing consistent, quality service in a family-oriented atmosphere.

Since its inception, NGE has hired and retained the best and brightest talent in the industry. Our staff have relevant experience and qualifications to complete complex environmental and geotechnical projects. NGE's future is bright as we pursue a course of planned, measured growth to meet the challenge of expansion without diluting leadership or weakening the company's ability to perform. After establishing a solid foundation and longstanding reputation in the region and across the nation as an innovative, sophisticated, forward-thinking environmental and geotechnical consulting firm, we are proud of our roots and the progressive environment we have created for our dedicated employees.

NGE is an organization that is small enough to focus time on each client but with a depth in talent and resources to successfully complete large and complex projects. NGE provides superior environmental and geotechnical services at a manageable price. A family oriented work atmosphere has fostered the growth of NGE's staff with the best and brightest talent in the industry.

NGE has garnered a variety of certifications and awards over the years in the environmental and geotechnical consulting industry. These accomplishments and accolades bear testament to the impeccable standards that we strive to achieve at NGE. They help differentiate our company from our competitors and serve to distinguish our employees as the "best of the best."

Hatfield McCoy Regional Recreation Authority

Mr. Jeffrey Lusk, Executive Director
State Route 16, Building 2
John D. Rockefeller Industrial Park
Pineville, WV 24874
304-752-3255

West Virginia Young Life Camp

Mr. Jake Harper, Project Manager
162 Old Vinton Farm Road
Summersville, WV 26651
304-880-0321

Rustic Ravines, Inc.

Mr. Joe Boffo, President
2575 Hampton Ridge Rd
Genoa, WV 25517
304-385-1085

SECTION .02

Projects and Goals



THRASHER



WVDEP AML **Anglins Run Portal**

Client Contact:

Mr. Gregory Smith, PE
101 Cambridge Place | Bridgeport, WV 26330
304-842-1900

The project area included a total of eight collapsed mine portals with at least five of them having discharges ranging from 1 to 10 gpm. Total flows were estimated to be between 25 and 30 gpm. Thrasher's scope and plans for this project included construction of an access road into the site, excavation and wet seal of at least eight deep mine portals and the re-grade and fill of subsidence sinkholes. To carry water safely off site, drainage control channels, conveyance pipe and under drain were constructed. All areas disturbed by construction were soil covered, conditioned and re-vegetated.



WVDEP AML Canyon Refuse

Client Contact:

Mr. Darren Bennett
101 Cambridge Place | Bridgeport, WV 26330
304-842-1900

The Canyon Refuse and Dump project was a site Thrasher worked on in Morgantown, WV. This project included a large scope, from mobilizing equipment to re-vegetating disturbed areas. To accomplish everything within the scope of this project, Thrasher prepared the site (including clearing and grubbing), constructed and installed support areas, and maintained access roads. Additionally, the team constructed and installed drainage control items to convey stormwater safely off-site through channels, culverts, and outlet protection. Thrasher also constructed and installed wet or modified mine seals, re-graded the refuse sites, backfilled highwalls, and ensured sediment control compliance with the approved NPDES permit.





WVDEP AML

Squires Creek Refuse

Client Contact:

Mr. Gregory Smith, PE

101 Cambridge Place | Bridgeport, WV 26330

304-842-1900

Squires Creek, located in Newburg, had two refuse piles covering two to three acres of land. The site had remains of a mine building, unvegetated coal refuse, deep mine portals, and acid mine drainage. Nearly all of the land was unvegetated with signs of severe erosion. Additionally, there were several public safety hazards: steep outcrops with well-used ATV trails up and down the face and deep mine portals, one of which was open enough to easily allow entrance.

Some of the major steps of the project included the following: site preparation (clearing and grubbing, removing debris), construction and installation of support areas, maintenance of access roads, construction and installation of drainage control items, re-vegetation of disturbed areas, and regrading of portal sites and refuse sites.





WVDEP AML Lambert's Run Site #7

Guardians of the West Fork
Mr. John Eleyette
830 Benoni Avenue | Fairmont, WV 26554
304-627-1019

This project located in Clarksburg, WV involved 3 wet-seal portals that drain into a 0.7 acre impoundment. The three portals discharge approximately 500 to 3,000

gallons per minute of iron laden water into the main stem of Lambert Run. This project is another in a series of projects aimed at removing Lambert Run (WV MW-16) from the state's 303(d) list of impaired watersheds. This is a project which will combat acid mine drainage emanating from three portals in the central region of the Lambert Run watershed.

Thrasher's plan for the project included, constructing, aeration channels and approximately 4 acres of aerobic wetlands to provide passive treatment of AMD. The proposed treatments have been designed to remove approximately 80% of the acid load.



WVDEP AML Laurel Run #1

Client Contact:

Mr. Gregory Smith, PE
101 Cambridge Place | Bridgeport, WV 26330
304-842-1900

This project site consisted of seven sections of highwall that totaled approximately 5,700 feet in length and averaged 20 feet in height. There were three collapsed portals adjacent to one another discharging approximately 25 gpm. One open portal entrance measured 2 foot by 3 foot and had no known discharge associated with it. Approximately 230 feet of abandoned railroad tracks remained on the project site and they did not connect to any existing tracks. The project site covered a total area of six acres and suffered from a lack of vegetation and toeing into Laurel Run.



WVDEP AML Roaring Creek

Client Contact:

Greenbrier County PSD #2
Mr. Kevin Williams, Manager
PO Box 673 | Rainelle, WV 25962
304-438-9283

This project involved the elimination of subsidence depressions, the closure of open portals and the treatment of AMD. The Roaring Creek Watershed was heavily deep mined and surfaced mined prior to 1977. The project area consisted of 3 open and 3 closed

portals discharging AMD. The AMD seeped along the unnamed tributary and an area of subsidence, which drained surface water into the mine workings. AMD flow from the deep mine portals ranged from 10 gpm to 100 gpm with PH ranging from 3.1 to 5.0. The seeps along the UNT showed an average PH of 3.3.

Thrasher's design plans called for the construction and rehabilitation of access roads to the site, and installation of wet seals at the portal locations. The plans also included re-grading the subsidence area to prevent surface water from entering the mine workings, and installing an emergency spillway on the existing pond which was designed to handle the additional flow.



WVDEP AML **Owl Creek Highwall #2**

This Morgantown, WV project involved three main sites which includes dangerous highwalls with heights between 20 and 70 feet, AMD water impoundments on highwall benches, exposed refuse on Booths Creek stream bank, open and collapsed portals, and existing non-functioning wet mine seal.

The scope of work included regrading the highwall bench and adjoining spoil piles to reclaim the highwalls, installing new or replacing the existing wet/modified mine seals for the portals producing AMD, and installing bate gates in the open portals. Additionally, Thrasher installed underdrains or seep collectors to eliminate ponding areas and construct conveyances to safely transport stormwater and mine water in and around the site. An Army Core of Engineers permit was applied for stream bank restoration/repair of Booths Creek and a temporary construction access across the stream. The project site covered a total area of 24.5 acres and reclamation included \pm 113,000 cubic yards of earthwork.



WVDEP AML

Swamp Run Refuse #1

Client Contact:

Buckhannon River Watershed Association
112 Fayette Street | Buckhannon, WV 26201
304-472-3317

This project, located in Alton, WV, involved a large ferric iron “mushroom” that takes up approximately 0.87 acres. This was caused by acid mine drainage (AMD) emanating from an entombed refuse fill above an unnamed tributary of Swamp Run. The Swamp Run #1 passive AMD treatment system utilized open limestone channels channeling the toxic water to a forebay, which controls larger storm event flow and separates that flow between primary and secondary limestone leech beds. These beds are self-flushing with an automated inline water level control structure. The treated water from the leech beds will then discharge into flushing ponds for solids removal before being conveyed into a wetland finishing pool prior to being released back into the unnamed tributary.

The proposed treatments have been designed to remove approximately 80% of the acid load and should have a lifespan of 20 years.



A critical step in meeting your goals is first ensuring we understand them. Thrasher's team has thoroughly reviewed the Expression of Interest request and is confident in our ability to deliver the highest-quality solutions to your problems. We are capable of meeting each goal/objective you have outlined and feel strongly that you will be satisfied with the outcomes you receive.

In order to meet your expectations for these projects, it is necessary to have multiple teams to perform the work. We have identified four two-person teams that are available for these projects. These teams will work under RJ as a Program Manager and single point of contact to you. If selected, it is our intention to hire additional staff to further strengthen our resources.

Our team is prepared to complete all of the following services:

- > National Environmental Policy Act (NEPA) consultations and documentation
- > Public Participation
- > Infrastructure Investment Jobs Act (IIJA) compliance
- > Determine legal ownership of properties
- > Obtain exploratory and construction rights of entry
- > Provide legal documentation to substantiate legal ownership findings
- > Provide current mapping, perform survey and other related services
- > Perform Site and Geotechnical Investigations
- > Design temporary and permanent access or accesses for construction and future maintenance
- > Slope stabilization
- > Design multiple portal seals and regrades
- > Design reclamation of exposed coal refuse and mine spoil
- > Design of drainage conveyances, including drainage channels, underdrains, and/or other controls to safely convey water off-site
- > Design reclamation of underground mine fire
- > Construction quality assurance and quality control (QA/QC)
- > Provide resident project representative/inspector
- > Prepare daily construction activity logs summarizing activities
- > Provide engineering support and services throughout construction
- > Provide Engineers certification report

We understand your goals for the eight projects in this contract and will handle them in the following manner:

► GOAL/OBJECTIVE 2.1

The Thrasher Group will meet with the WVDEP on site to conduct a site walk through and identify areas in need of remediation and the type of remediation. Once completed, Thrasher will prepare a proposal and estimate for each project.

► GOAL/OBJECTIVE 2.2

The Thrasher Group will conduct an environmental assessment (EA) meeting the requirement of WVDEP-AML and OSMRE. This EA, will at a minimum, include correspondence and consideration to the US Fish and Wildlife Agency, the Army Corps of Engineers, Division of Natural Resources, State Historic Preservation Office, and other agencies necessary to meet the NEPA and IIJA environmental requirements.

Thrasher will also develop plans and specifications in a manner that will comply with the IIJA requirements. This may include, but is not limited to, American Iron and Steel requirements, disadvantaged business requirements and other necessary considerations.

The Thrasher Group will conduct a thorough record search to determine the legal ownership of any properties associated with the project. This may include tax record searches, deed research, property corner locations, legal title searches, owner interviews, and other necessary research. Thrasher will assist with any necessary right-of-way or easement preparation, deed verification, or other document preparation necessary to substantiate or acquire legal rights needed to complete the projects.

► GOAL/OBJECTIVE 2.3

The Thrasher Group will work with WVDEP-AML to develop a cost-effective approach to solve the issues related to these sites. Thrasher will develop plans and specifications for each project that will allow a contractor to efficiently complete the work. We will provide detailed plans to reclaim mine portals, drainage controls and systems, slope stabilization, coal refuse reclamation, stream restoration, subsidence repair, storm water and erosion and sediment control, regrade and revegetation, and all other conditions encountered on the project sites. Finally, we will provide specifications that will require contractors to meet the standard of WVDEP-AML. Standard WVDEP-AML specifications and other materials will be incorporated into the documents.

► GOAL/OBJECTIVE 2.4

The Thrasher Group will prepare and assist with the acquisition of all permits required to complete these projects. This may include, but is not limited to, NPDES stormwater construction permits, Army Corps of Engineers Nationwide or Individual Permits, and/or other necessary permits.

We will develop plans and specifications outlining the contractor requirements during construction and maintenance periods. These specifications will ensure that the permits are well maintained and meet the requirements for release. Thrasher will assist with the preparation of any documents needed to maintain or release the permits.

► GOAL/OBJECTIVE 2.5

The Thrasher Group will provide an experience resident project representative (RPR). The RPR will develop daily field activity reports that can be provided in real time or at preferred intervals. Project Managers and/or Professional Engineers will conduct site visits on a regular basis and at critical construction points to ensure quality construction and adherence to the plans and specifications.

Thrasher's in-house Materials Testing Division will provide necessary field representatives to ensure quality assurance and control specifications are being adhered to. Our lab and field personnel can conduct most all necessary material testing practices including but not limited to soil and stone compaction testing and analysis of materials, moisture content testing, concrete and/or grout testing, and many others.

Richard "RJ" Hovatter will be the Program Manager overseeing four two-person teams for these projects with Chad Biller providing quality control. They will be supported by a team of qualified staff to perform the necessary tasks such as survey, geotechnical engineering, design, permitting, and bid documents as required for a complete design set and project.

RJ will communicate with the AML team to determine the preferred timing for each project and will work with you to establish the most realistic and efficient schedule for all projects.

The general project approach we will follow for your project is outlined below:

Step 1 | Site Visit

Our assembled team of engineers and technicians will conduct a site visit. This group will evaluate the project conditions and identify and document potential problem areas. Thrasher will call the necessary utilities prior to being on-site to help identify any known utility locations. We will coordinate with your team and any identified stakeholders to take all the facts into consideration during this process.

Step 2 | Land Rights Acquisition

Thrasher will identify property owners within the project area. This will be completed through deed search. We will also reach out to property owners to obtain the needed permissions to be on property to design and construct the projects.

Step 3 | Survey

Thrasher will survey the sites for existing structures, utilities, topography, mine portals, and/or other identified items on site. Survey will include, but not limited to, drone, flight, and survey team.

Step 4 | Conceptual Design and Report

Thrasher will prepare a conceptual design for the project at hand. Where applicable, we will also provide design alternatives for consideration. We will then prepare a written report of the conceptual designs and outline any issues.

Step 5 | Construction Documents

Our team will provide design solutions and construction documents to the WVDEP-AML for the project. These plans will be carried forward to final design based upon the conceptual design report. In addition, with Thrasher's experience working on various similar projects, a construction safety and phasing plan, as required, will be developed and reviewed with the WVDEP-AML to ensure an efficient and safe project during construction.

We will complete the final design documents based upon comments received and conclusions throughout the design review process. Our field evaluations and design approach will specifically address these issues in the construction documents.

Step 6 | Cost Estimates

Our project team will provide itemized cost estimates at the following stages: conceptual design, preliminary design, and final design.

Step 7 | Bid Process

We will assist the WVDEP-AML in preparation of the bid documents, attend pre-bid meetings, and assist in issuance of addenda.

Step 8 | Construction Administration

The project team will review project submittals, attend project meetings, and provide a Resident Project Representative to inspect the construction being completed. The project team will also provide final punch list inspection at project completion.

Thrasher will also develop a program to keep your team abreast of potential construction issues.

Step 9 | Project Close Out

Upon completion of the project, the Thrasher team will review and comment or approve contractor's as-builts and final quantities. All permits will be closed/terminated at the completion of the warranty period.

SECTION .03

Required Forms



THRASHER

DESIGNATED CONTACT: Vendor appoints the individual identified in this Section as the Contract Administrator and the initial point of contact for matters relating to this Contract.

(Printed Name and Title) Richard Hovatter, PE | Principal and Project Manager

(Address) 600 White Oaks Blvd | Bridgeport, WV 26330

(Phone Number) / (Fax Number) 304-624-4108 | 304-624-7831

(Email address) RHovatter@thethrashergroup.com

CERTIFICATION AND SIGNATURE: By signing below, or submitting documentation through WV OASIS, I certify that: I have reviewed this Solicitation/Contract in its entirety; that I understand the requirements, terms and conditions, and other information contained herein; that this bid, offer or proposal constitutes an offer to the State that cannot be unilaterally withdrawn; that the product or service proposed meets the mandatory requirements contained in the Solicitation/Contract for that product or service, unless otherwise stated herein; that the Vendor accepts the terms and conditions contained in the Solicitation, unless otherwise stated herein; that I am submitting this bid, offer or proposal for review and consideration; that this bid or offer was made without prior understanding, agreement, or connection with any entity submitting a bid or offer for the same material, supplies, equipment or services; that this bid or offer is in all respects fair and without collusion or fraud; that this Contract is accepted or entered into without any prior understanding, agreement, or connection to any other entity that could be considered a violation of law; that I am authorized by the Vendor to execute and submit this bid, offer, or proposal, or any documents related thereto on Vendor's behalf; that I am authorized to bind the vendor in a contractual relationship; and that to the best of my knowledge, the vendor has properly registered with any State agency that may require registration.

By signing below, I further certify that I understand this Contract is subject to the provisions of West Virginia Code § 5A-3-62, which automatically voids certain contract clauses that violate State law; and that pursuant to W. Va. Code 5A-3-63, the entity entering into this contract is prohibited from engaging in a boycott against Israel.

The Thrasher Group, Inc.

(Company)

(Signature of Authorized Representative)

Richard Hovatter, PE | Principal and Project Manager

(Printed Name and Title of Authorized Representative) (Date)

304-624-4108 | 304-624-7831

(Phone Number) (Fax Number)

RHovatter@thethrashergroup.com

(Email Address)

ADDENDUM ACKNOWLEDGEMENT FORM
SOLICITATION NO.:

Instructions: Please acknowledge receipt of all addenda issued with this solicitation by completing this addendum acknowledgment form. Check the box next to each addendum received and sign below. Failure to acknowledge addenda may result in bid disqualification.

Acknowledgment: I hereby acknowledge receipt of the following addenda and have made the necessary revisions to my proposal, plans and/or specification, etc.

Addendum Numbers Received:

(Check the box next to each addendum received)

- | | |
|---|--|
| <input type="checkbox"/> Addendum No. 1 | <input type="checkbox"/> Addendum No. 6 |
| <input type="checkbox"/> Addendum No. 2 | <input type="checkbox"/> Addendum No. 7 |
| <input type="checkbox"/> Addendum No. 3 | <input type="checkbox"/> Addendum No. 8 |
| <input type="checkbox"/> Addendum No. 4 | <input type="checkbox"/> Addendum No. 9 |
| <input type="checkbox"/> Addendum No. 5 | <input type="checkbox"/> Addendum No. 10 |

I understand that failure to confirm the receipt of addenda may be cause for rejection of this bid. I further understand that any verbal representation made or assumed to be made during any oral discussion held between Vendor's representatives and any state personnel is not binding. Only the information issued in writing and added to the specifications by an official addendum is binding.

The Thrasher Group, Inc.

Company



Authorized Signature

8/29/2023

Date

NOTE: This addendum acknowledgment should be submitted with the bid to expedite document processing.

WEST VIRGINIA DEPARTMENT OF ENVIRONMENTAL PROTECTION

AML CONSULTANT QUALIFICATION QUESTIONNAIRE

Attachment "A"

PROJECT NAME CEOI 0313 DEP2400000007 AML Contract North 3		DATE (DAY, MONTH, YEAR) August 29, 2023		FEIN 55-0633596-6					
1. FIRM NAME The Thrasher Group, Inc.		2. HOME OFFICE BUSINESS ADDRESS 600 White Oaks Blvd. Bridgeport, WV 26330		3. FORMER FIRM NAME Thrasher Engineering					
4. HOME OFFICE TELEPHONE 304-624-4108	5. ESTABLISHED (YEAR) 1983	6. TYPE OWNERSHIP Individual Corporation X Partnership Joint-Venture		6a. WV REGISTERED DBE (Disadvantaged Business Enterprise) YES NO X					
7. PRIMARY AML DESIGN OFFICE: ADDRESS/ TELEPHONE/ PERSON IN CHARGE/ NO. AML DESIGN PERSONNEL EACH OFFICE 600 White Okas Boulevard. Bridgeport, WV 26330 / 304-624-4108 / Samuel Rich / 11									
8. NAMES OF PRINCIPAL OFFICERS OR MEMBERS OF FIRM Woody Thrasher - President and CEO Lauren Lint - CFO Clayton White - COO		8a. NAME, TITLE, & TELEPHONE NUMBER - OTHER PRINCIPALS <div style="display: flex; justify-content: space-between;"> <div style="width: 48%;"> CHAD RILEY, PE - SHAREHOLDER (304)-326-6120 WM. RANDY WATSON - SHAREHOLDER (304) 326-6129 CHADWICK BILLER, PE - SHAREHOLDER (304) 326-6127 DAN FERRELL, PE - SHAREHOLDER (304) 288-7755 CRAIG BAKER, ALEP - SHAREHOLDER (304) 669-3022 JONATHAN CARPENTER, PE- SHAREHOLDER (304) 343-7601 KYLEA RADCLIFF, PE - SHAREHOLDER (304) 476-8033 STEVEN HAMIT, PE - SHAREHOLDER (304) 620-4790 JESSE ALDEN, PE - SHAREHOLDER (304) 476-8488 JASON BOYD, PE - SHAREHOLDER (304) 677-5142 JOE LOWTHER, PS - SHAREHOLDER (304) 677-5314 HEIDI HANDLEY - SHAREHOLDER (304) 612-6002 DOUG SMITH, PE, MBA - SHAREHOLDER (304) 326-6372 AMANDA CHEUVRON, AIA - SHAREHOLDER (304) 444-0360 </div> <div style="width: 48%;"> MATTHEW BREAKEY, AIA - SHAREHOLDER (304) 641-3741 MICHAEL TYLER, PE - SHAREHOLDER (304) 343-7601 CLAY RILEY, PE - SHAREHOLDER (304) 288-5011 ERIC SHERRARD, EI - SHAREHOLDER (304) 918-4317 NICOLE JONES, PE - SHAREHOLDER (304) 476-3655 </div> </div>							
9. PERSONNEL BY DISCIPLINE									
<table style="width:100%; border: none;"> <tr> <td style="width:25%; vertical-align: top;"> 14 ADMINISTRATIVE 8 ARCHITECTS — BIOLOGIST 20 CADD OPERATORS — CHEMICAL ENGINEERS 44 CIVIL ENGINEERS 8 CONSTRUCTION INSPECTORS 3 DESIGNERS — DRAFTSMEN </td> <td style="width:25%; vertical-align: top;"> — ECOLOGISTS — ECONOMISTS 2 ELECTRICAL ENGINEERS 10 ENVIRONMENTALISTS 1 ESTIMATORS 3 GEOLOGISTS — HISTORIANS 1 HYDROLOGISTS </td> <td style="width:25%; vertical-align: top;"> 3 LANDSCAPE ARCHITECTS 1 MECHANICAL ENGINEERS — MINING ENGINEERS 3 PHOTOGRAMMETRISTS 2 PLANNERS: URBAN/REGIONAL 44 SANITARY ENGINEERS — SOILS ENGINEERS — SPECIFICATION 3 Writers </td> <td style="width:25%; vertical-align: top;"> 2 STRUCTURAL ENGINEERS 100 SURVEYORS 3 TRAFFIC ENGINEERS 48 OTHER 316 TOTAL PERSONNEL </td> </tr> </table>						14 ADMINISTRATIVE 8 ARCHITECTS — BIOLOGIST 20 CADD OPERATORS — CHEMICAL ENGINEERS 44 CIVIL ENGINEERS 8 CONSTRUCTION INSPECTORS 3 DESIGNERS — DRAFTSMEN	— ECOLOGISTS — ECONOMISTS 2 ELECTRICAL ENGINEERS 10 ENVIRONMENTALISTS 1 ESTIMATORS 3 GEOLOGISTS — HISTORIANS 1 HYDROLOGISTS	3 LANDSCAPE ARCHITECTS 1 MECHANICAL ENGINEERS — MINING ENGINEERS 3 PHOTOGRAMMETRISTS 2 PLANNERS: URBAN/REGIONAL 44 SANITARY ENGINEERS — SOILS ENGINEERS — SPECIFICATION 3 Writers	2 STRUCTURAL ENGINEERS 100 SURVEYORS 3 TRAFFIC ENGINEERS 48 OTHER 316 TOTAL PERSONNEL
14 ADMINISTRATIVE 8 ARCHITECTS — BIOLOGIST 20 CADD OPERATORS — CHEMICAL ENGINEERS 44 CIVIL ENGINEERS 8 CONSTRUCTION INSPECTORS 3 DESIGNERS — DRAFTSMEN	— ECOLOGISTS — ECONOMISTS 2 ELECTRICAL ENGINEERS 10 ENVIRONMENTALISTS 1 ESTIMATORS 3 GEOLOGISTS — HISTORIANS 1 HYDROLOGISTS	3 LANDSCAPE ARCHITECTS 1 MECHANICAL ENGINEERS — MINING ENGINEERS 3 PHOTOGRAMMETRISTS 2 PLANNERS: URBAN/REGIONAL 44 SANITARY ENGINEERS — SOILS ENGINEERS — SPECIFICATION 3 Writers	2 STRUCTURAL ENGINEERS 100 SURVEYORS 3 TRAFFIC ENGINEERS 48 OTHER 316 TOTAL PERSONNEL						
TOTAL NUMBER OF WV REGISTERED PROFESSIONAL ENGINEERS IN PRIMARY OFFICE: 39 *RPes other than Civil and Mining must provide supporting documentation that qualifies them to supervise and perform this type of work.									
10. HAS THIS JOINT-VENTURE WORKED TOGETHER BEFORE? <input type="checkbox"/> YES <input checked="" type="checkbox"/> NO - Not Applicable									

11. OUTSIDE KEY CONSULTANTS/SUB-CONSULTANTS ANTICIPATED TO BE USED. Attach "AML Consultant Qualification Questionnaire".

[illegible]

12.	A.	Is your firm's personnel experienced in Abandoned Mine Lands Remediation/Mine Reclamation Engineering?
	<input checked="" type="checkbox"/> YES	Description and Number of Projects: Thrasher performs engineering design services to the WV DEP for drainage, portal seals, highwall and other remediation projects, as well as water line and water treatment plant projects related to AML. Numerous projects involving land remediation, storm water drainage, slip repair, mass grading in relations to site development and highway projects are engineered by the firm on a regular basis.
		NO
	B.	Is your firm experienced in Soil Analysis?
	<input checked="" type="checkbox"/> YES	Description and Number of Projects: Thrasher maintains an AASHTO Certified materials testing lab at both the Bridgeport and Beckley offices. Soil analysis experience is specifically in gradation and classification.
		NO
	C.	Is your firm experienced in hydrology and hydraulics?
	<input checked="" type="checkbox"/> YES	Description and Number of Projects: Throughout the state, Thrasher has done planning and design of bridges for the West Virginia department of highways and the design of multiple private and municipal development projects located within floodplains. Thus, Thrasher has extensive experience in hydrology. We also have a vast amount of experience in hydraulic modeling for water and wastewater projects throughout West Virginia
		NO
	D.	Does your firm produce its own Aerial Photography and Develop Contour Mapping?
	<input checked="" type="checkbox"/>	Description and Number of Projects: Thrasher acquires aerial imagery using in-house resources on smaller area projects. We own and operate three UAS (unmanned aerial systems) for a variety of imagery missions for projects up to approximately 500 acres. For large mapping projects, we use commercial flying service. Thrasher has three FAA Certified pilots. Thrasher has expertise and software in-house and routinely performs aero triangulation, planimetric compilation, surface modeling, contour mapping and digitally rectified imagery. Thrasher has mapped and flown hundreds of projects within the last year.
		NO
	E.	Is your firm experienced in domestic waterline design? (Include any experience your firm has in evaluation of aquifer degradation as a result of mining.)
	<input checked="" type="checkbox"/> YES	Description and Number of Projects: Thrasher has designed more water line systems than any other West Virginia firm. Projects include new systems, extensions, and replacements of water line distribution systems, many of which have been affected by AML. Design of the projects includes lines, booster stations, water treatment plants, and storage facilities. Thrasher's analysis and design also includes improvements and alternatives for water sources deemed ground water under the direct effect of surface water.
		NO
	F.	Is your firm experienced in Acid Mine Drainage Evaluation and Abatement Design?
	<input checked="" type="checkbox"/> YES	Description and Number of Projects: Thrasher has been awarded and has successfully completed numerous reclamation projects for the WV DEP related specifically to acid mine drainage and abatement, as well as multiple passive treatment systems designed to watershed protection groups. The Charleston, WV branch of our company designed and award-winning water treatment plant for Martinka mines in Marion County, West Virginia to treat mine drainage.
		NO

13. PERSONAL HISTORY STATEMENT OF PRINCIPALS AND ASSOCIATES **RESPONSIBLE FOR AML PROJECT DESIGN** (Furnish complete data but keep to essentials)

NAME & TITLE (Last, First, Middle Int.)	YEARS OF EXPERIENCE		
	YEARS OF AML DESIGN EXPERIENCE:	YEARS OF AML RELATED DESIGN EXPERIENCE:	YEARS OF DOMESTIC WATERLINE DESIGN EXPERIENCE:
Richard "RJ" Hovatter, PE Principal and Program Manager	16	16	16

Brief Explanation of Responsibilities

As Principal and Project Manager, RJ has completed the site design, grading, storm water and erosion and sediment control plans for over twenty private and commercial development. He has also managed over 35 Abandoned Mine Land Emergency and Abandoned Mine Land projects in West Virginia, Maryland and Ohio. RJ has also been the lead on numerous slip remediation projects.

EDUCATION (Degree, Year, Specialization)

Bachelor of Science, 2002, Civil Engineering Technology – Fairmont State University

MEMBERSHIP IN PROFESSIONAL ORGANIZATIONS

N/A

REGISTRATION (Type, Year, State)

Professional Engineer, 2009, West Virginia #018460

Professional Engineer, 2010, Pennsylvania #PE077844

13. PERSONAL HISTORY STATEMENT OF PRINCIPALS AND ASSOCIATES **RESPONSIBLE FOR AML PROJECT DESIGN** (Furnish complete data but keep to essentials)

NAME & TITLE (Last, First, Middle Int.)	YEARS OF EXPERIENCE		
	YEARS OF AML DESIGN EXPERIENCE:	YEARS OF AML RELATED DESIGN EXPERIENCE:	YEARS OF DOMESTIC WATERLINE DESIGN EXPERIENCE:
Chadwick Biller, PE QA/QC	19	24	24

Brief Explanation of Responsibilities

Chadwick Biller has experience in all aspects of Engineering with specific emphasis on site development, highways, roads, bridges, and airports. Chad joined The Thrasher Group, Inc. in 1999 and is a partner of The Thrasher Group. Chad is responsible for WV DEP AML projects and public and private site development projects, specializing in airports, highways, roads, and bridges. As project manager for all of the firm's WVDOT/DOH projects, he has knowledge of the state and federal building standards.

EDUCATION (Degree, Year, Specialization)

Bachelor of Science, Civil Engineering, 1992 - West Virginia University

MEMBERSHIP IN PROFESSIONAL ORGANIZATIONS

American Society of Civil Engineers, Society of American
Military Engineers, National Society of Professional Engineer

REGISTRATION (Type, Year, State)

Professional Engineer, 1998, West Virginia #13620

Professional Engineer, 1999, Pennsylvania #PE056012E

Professional Engineer, 2000, Ohio #64594

13. PERSONAL HISTORY STATEMENT OF PRINCIPALS AND ASSOCIATES **RESPONSIBLE FOR AML PROJECT DESIGN** (Furnish complete data but keep to essentials)

NAME & TITLE (Last, First, Middle Int.)	YEARS OF EXPERIENCE		
	YEARS OF AML DESIGN EXPERIENCE:	YEARS OF AML RELATED DESIGN EXPERIENCE:	YEARS OF DOMESTIC WATERLINE DESIGN EXPERIENCE:
Cole Anderson Project Manager	7	7	7

Brief Explanation of Responsibilities

Cole has completed the site design, grading, storm water and erosion and sediment control plans for over twenty private and commercial development. He has been involved in various Abandoned Mine Land Emergency and Abandoned Mine Land projects in West Virginia, Maryland and Ohio. Cole has also been the lead on numerous slip remediation projects.

EDUCATION (Degree, Year, Specialization)

Bachelor of Science, 2016, Civil Engineering Technology – Fairmont State University

MEMBERSHIP IN PROFESSIONAL ORGANIZATIONS

N/A

REGISTRATION (Type, Year, State)

Professional Engineer, 2022, West Virginia

13. PERSONAL HISTORY STATEMENT OF PRINCIPALS AND ASSOCIATES **RESPONSIBLE FOR AML PROJECT DESIGN** (Furnish complete data but keep to essentials)

NAME & TITLE (Last, First, Middle Int.)	YEARS OF EXPERIENCE		
	YEARS OF AML DESIGN EXPERIENCE:	YEARS OF AML RELATED DESIGN EXPERIENCE:	YEARS OF DOMESTIC WATERLINE DESIGN EXPERIENCE:
Spencer Brescoach Project Engineer	6	6	6

Brief Explanation of Responsibilities

As project engineer, Cody's responsibilities will include design layout, AutoCAD drafting, project management, and Plan Set Construction.

EDUCATION (Degree, Year, Specialization)

Bachelor of Science, Civil Engineering Technology, 2017 - Fairmont State University

MEMBERSHIP IN PROFESSIONAL ORGANIZATIONS

N/A

REGISTRATION (Type, Year, State)

N/A

13. PERSONAL HISTORY STATEMENT OF PRINCIPALS AND ASSOCIATES **RESPONSIBLE FOR AML PROJECT DESIGN** (Furnish complete data but keep to essentials)

NAME & TITLE (Last, First, Middle Int.)	YEARS OF EXPERIENCE		
	YEARS OF AML DESIGN EXPERIENCE:	YEARS OF AML RELATED DESIGN EXPERIENCE:	YEARS OF DOMESTIC WATERLINE DESIGN EXPERIENCE:
Danny Wolfe Assistant Project Manager	4	4	0

Brief Explanation of Responsibilities
 As Assistant Project Manager, Cody's responsibilities will include design management of projects, coordination with RJ and Cole, layout, Auto-CAD drafting, project management, and Plan Set Construction.

EDUCATION (Degree, Year, Specialization)
 N/A

MEMBERSHIP IN PROFESSIONAL ORGANIZATIONS	REGISTRATION (Type, Year, State)
N/A	N/A

13. PERSONAL HISTORY STATEMENT OF PRINCIPALS AND ASSOCIATES **RESPONSIBLE FOR AML PROJECT DESIGN** (Furnish complete data but keep to essentials)

NAME & TITLE (Last, First, Middle Int.)	YEARS OF EXPERIENCE		
	YEARS OF AML DESIGN EXPERIENCE:	YEARS OF AML RELATED DESIGN EXPERIENCE:	YEARS OF DOMESTIC WATERLINE DESIGN EXPERIENCE:
Cody Winter, EI Assistant Project Manager	1	1	7

Brief Explanation of Responsibilities
 As Assistant Project Manager, Cody's responsibilities will include design management of projects, coordination with RJ and Cole, layout, Auto-CAD drafting, project management, and Plan Set Construction.

EDUCATION (Degree, Year, Specialization)
 Bachelor of Science, 2016, Civil Engineering Technology - Fairmont State University

MEMBERSHIP IN PROFESSIONAL ORGANIZATIONS	REGISTRATION (Type, Year, State)
N/A	Engineering Intern: West Virginia

13. PERSONAL HISTORY STATEMENT OF PRINCIPALS AND ASSOCIATES **RESPONSIBLE FOR AML PROJECT DESIGN** (Furnish complete data but keep to essentials)

NAME & TITLE (Last, First, Middle Int.)

Thomas Morgan
Assistant Project Manager

YEARS OF EXPERIENCE

YEARS OF AML DESIGN EXPERIENCE:

0

YEARS OF AML RELATED DESIGN
EXPERIENCE:

5

YEARS OF DOMESTIC
WATERLINE DESIGN
EXPERIENCE: 5

Brief Explanation of Responsibilities

As Assistant Project Manager, Thomas's responsibilities will include design management of projects, coordination with RJ and Cole, layout, Auto-CAD drafting, project management, and Plan Set Construction.

EDUCATION (Degree, Year, Specialization)

Bachelor of Science, 2016, Mechanical Engineering - Fairmont State University

MEMBERSHIP IN PROFESSIONAL ORGANIZATIONS

N/A

REGISTRATION (Type, Year, State)

N/A

13. PERSONAL HISTORY STATEMENT OF PRINCIPALS AND ASSOCIATES **RESPONSIBLE FOR AML PROJECT DESIGN** (Furnish complete data but keep to essentials)

NAME & TITLE (Last, First, Middle Int.)

Forrest Stern
Staff Engineer

YEARS OF EXPERIENCE

YEARS OF AML DESIGN EXPERIENCE:

0

YEARS OF AML RELATED DESIGN
EXPERIENCE:

0

YEARS OF DOMESTIC
WATERLINE DESIGN
EXPERIENCE: 1

Brief Explanation of Responsibilities

As staff engineer, Forrest's responsibilities will include design layout, AutoCAD drafting, project management, and Plan Set Construction.

EDUCATION (Degree, Year, Specialization)

Bachelor of Science, 2023, Environmental Engineering - Shepherd University

MEMBERSHIP IN PROFESSIONAL ORGANIZATIONS

N/A

REGISTRATION (Type, Year, State)

N/A

13. PERSONAL HISTORY STATEMENT OF PRINCIPALS AND ASSOCIATES **RESPONSIBLE FOR AML PROJECT DESIGN** (Furnish complete data but keep to essentials)

NAME & TITLE (Last, First, Middle Int.)	YEARS OF EXPERIENCE		
	YEARS OF AML DESIGN EXPERIENCE:	YEARS OF AML RELATED DESIGN EXPERIENCE:	YEARS OF DOMESTIC WATERLINE DESIGN EXPERIENCE:
Noah Smith Staff Engineer	0	0	3

Brief Explanation of Responsibilities

As staff engineer, Noah's responsibilities will include design layout, AutoCAD drafting, project management, and Plan Set Construction.

EDUCATION (Degree, Year, Specialization)

Bachelor of Science, 2020, Civil Engineering - West Virginia University

MEMBERSHIP IN PROFESSIONAL ORGANIZATIONS

N/A

REGISTRATION (Type, Year, State)

N/A

13. PERSONAL HISTORY STATEMENT OF PRINCIPALS AND ASSOCIATES **RESPONSIBLE FOR AML PROJECT DESIGN** (Furnish complete data but keep to essentials)

NAME & TITLE (Last, First, Middle Int.)	YEARS OF EXPERIENCE		
	YEARS OF AML DESIGN EXPERIENCE:	YEARS OF AML RELATED DESIGN EXPERIENCE:	YEARS OF DOMESTIC WATERLINE DESIGN EXPERIENCE:
Dillion Phares Staff Engineer	0	0	3

Brief Explanation of Responsibilities

As staff engineer, Dillion's responsibilities will include design layout, AutoCAD drafting, project management, and Plan Set Construction.

EDUCATION (Degree, Year, Specialization)

N/A

MEMBERSHIP IN PROFESSIONAL ORGANIZATIONS

N/A

REGISTRATION (Type, Year, State)

N/A

13. PERSONAL HISTORY STATEMENT OF PRINCIPALS AND ASSOCIATES **RESPONSIBLE FOR AML PROJECT DESIGN** (Furnish complete data but keep to essentials)

NAME & TITLE (Last, First, Middle Int.)	YEARS OF EXPERIENCE		
	YEARS OF AML DESIGN EXPERIENCE:	YEARS OF AML RELATED DESIGN EXPERIENCE:	YEARS OF DOMESTIC WATERLINE DESIGN EXPERIENCE:
Samuel Wilkes Environmental Lead	3	23	23

Brief Explanation of Responsibilities
As the Environmental Lead, Samuel is responsible for NEPA documentation including agency coordination and permitting including Cultural resources/Section 106, endangered species/Section 7, Clean Water Act/USACE permitting, NRCS Farmland coordination, DEP NPDES permitting, Floodplain permitting, and consultations

EDUCATION (Degree, Year, Specialization)
Master of Science 2003 Environmental Science & Policy - Johns Hopkins University
Bachelor of Science, 1996 Earth & Environmental Science - Wilkes University

MEMBERSHIP IN PROFESSIONAL ORGANIZATIONS	REGISTRATION (Type, Year, State)
Society of Wetland Scientists	Professional Wetland Scientist Licensed Remediation Specialist

13. PERSONAL HISTORY STATEMENT OF PRINCIPALS AND ASSOCIATES **RESPONSIBLE FOR AML PROJECT DESIGN** (Furnish complete data but keep to essentials)

NAME & TITLE (Last, First, Middle Int.)	YEARS OF EXPERIENCE		
	YEARS OF AML DESIGN EXPERIENCE:	YEARS OF AML RELATED DESIGN EXPERIENCE:	YEARS OF DOMESTIC WATERLINE DESIGN EXPERIENCE:
Duane Perkins Construction Manager	0	2	30

Brief Explanation of Responsibilities
Duane is the a senior construction manager in Thrasher’s Bridgeport office, which consists of management of quality measures for the clientele, scheduling, invoicing and proposals, and making sure the Beckley lab is running to the standards as set forth from AASHTO. He also makes sure that Thrasher’s RPRs are informed and competent in the testing being performed, as well as tracking down information that is required for said testing.

EDUCATION (Degree, Year, Specialization)
N/A

MEMBERSHIP IN PROFESSIONAL ORGANIZATIONS	REGISTRATION (Type, Year, State)
N/A	N/A

13. PERSONAL HISTORY STATEMENT OF PRINCIPALS AND ASSOCIATES **RESPONSIBLE FOR AML PROJECT DESIGN** (Furnish complete data but keep to essentials)

NAME & TITLE (Last, First, Middle Int.)	YEARS OF EXPERIENCE		
	YEARS OF AML DESIGN EXPERIENCE:	YEARS OF AML RELATED DESIGN EXPERIENCE:	YEARS OF DOMESTIC WATERLINE DESIGN EXPERIENCE:
Aaron Rawe, PS Survey Manager	4	4	4

Brief Explanation of Responsibilities
 Aaron's duties cover various aspects of surveying, including routing, as-builts, preliminary, construction stakeout and boundary of construction management. He also meets with project stakeholders, area residents, local utility companies, and the project engineers to ensure that schedules are being met and to regularly update all parties on construction status. Additionally, Aaron is progressively responsible for the coordination of field crews, data collection, site layouts, ALTA surveys, subsidence and topographic surveys

EDUCATION (Degree, Year, Specialization)
 Associates of Science, 2011, Surveying Technology - Glenville State University

MEMBERSHIP IN PROFESSIONAL ORGANIZATIONS West Virginia Society of Professional Surveyors	REGISTRATION (Type, Year, State) Professional Surveyor: West Virginia and Kentucky
---	---

13. PERSONAL HISTORY STATEMENT OF PRINCIPALS AND ASSOCIATES **RESPONSIBLE FOR AML PROJECT DESIGN** (Furnish complete data but keep to essentials)

NAME & TITLE (Last, First, Middle Int.)	YEARS OF EXPERIENCE		
	YEARS OF AML DESIGN EXPERIENCE:	YEARS OF AML RELATED DESIGN EXPERIENCE:	YEARS OF DOMESTIC WATERLINE DESIGN EXPERIENCE:
Matt Watson Laboratory Manager	0	1	17

Brief Explanation of Responsibilities
 Matt is the laboratory manager in Thrasher's Bridgeport office, which consists of management of quality measures for the clientele, scheduling, invoicing and proposals, and making sure the Beckley lab is running to the standards as set forth from AASHTO. He also makes sure that Thrasher's RPRs are informed and competent in the testing being performed, as well as tracking down information that is required for said testing.

EDUCATION (Degree, Year, Specialization)
 N/A

MEMBERSHIP IN PROFESSIONAL ORGANIZATIONS N/A	REGISTRATION (Type, Year, State) N/A
---	---

14. PROVIDE A LIST OF SOFTWARE AND EQUIPMENT AVAILABLE IN THE PRIMARY OFFICE WHICH WILL BE USED TO COMPLETE AML DESIGN SERVICES

The Thrasher Group, Inc. will design work for AML utilizing one of the largest networks of computer aided design (CAD) equipment, software and trained personnel in the state of West Virginia.

Connected through a virtual private network, our cad staff has the ability to share necessary plans among our locations. This will allow work designed for AML to be prepared and updated at the office location that best meets the needs of the scope of services.

Civil 3D, Carlson and Microstation V8 Software is utilized at 35 CAD stations throughout our locations. Additionally, equipment includes 10 large format (Size E) plotters and 5 large format plotter / scanners. CAD plans are prepared by both dedicated cad employees and by staff engineers and engineering technicians in each of the firm's offices.

Thrasher also utilizes top-of-the line survey equipment. Our survey work is accomplished with global positioning systems (GPS) and electronic distance measuring (EDM) survey stations with data gathering capabilities. The survey crews and office support staff generate mapping deliverables in virtually any digital format referenced to specified projection systems.

Additional survey services include: high accuracy monumentation, astronomic observations / orientation, NGS blue booking, hydrographic, terrestrial scanning, 3D asbuilts, 3d monitoring, sub-surface utility location / designation. The field crews are all equipped with late model four-wheel drive vehicles stocked with the most modern equipment available to perform professional land surveying services.

- 111 TRIMBLE GNSS UNITS
- 68 TRIMBLE ROBOTS
- 2 PRECISE DIGITAL FIRST ORDER LEVELS WITH INVAR RODS
- 39 LEICA, NIKON OR TOPCON TOTAL STATIONS ALL MANAGED BY
- TRIMBLE TSC3 FIELD COMPUTERS
- 2 REMOTE CONTROLLED/UNMANNED MAPPING AERIAL PLATFORM
- HYDROGRAPHIC SURVEY VESSEL
- CIVIL 3D
- CARLSON AND MICROSTATION V8 SOFTWARE
- 35 CAD STATIONS
- 10 LARGE FORMAT (SIZE E) PLOTTERS AND
- 5 LARGE FORMAT PLOTTER / SCANNERS
- 7 3D SUB-SURFACE UTILITY LOCATORS

15. CURRENT ACTIVITIES ON WHICH YOUR FIRM IS THE DESIGNATED ENGINEER OF RECORD

PROJECT NAME, TYPE AND LOCATION	NAME AND ADDRESS OF OWNER	NATURE OF YOUR FIRM'S RESPONSIBILITY	ESTIMATED CONSTRUCTION COST	PERCENT COMPLETE
DESIGN GROUP B AML-REFUSE, PROTALS, RECLAMATION, LANDSLIDE OHIO, MARION, AND TAYLOR COUNTIES, WV	ENVIRONMENTAL PROTECTION OFFICE OF AML&R 601 57TH ST SE CHARLESTON WV 25304	PROVIDE ENGINEERING SERVICES TO MITIGATE MINING RELATED PROBLEMS ASSOCIATED WITH ABANDONED MINE LANDS (PERMITTING, DESIGN, CONSTRUCTION MONITORING)	TBD	80%%
KEMPTON REFUSE REHABILITATION TUCKER COUNTY, WV NEAR THOMAS	ENVIRONMENTAL PROTECTION OFFICE OF AML&R 601 57TH ST SE CHARLESTON WV 25304	PROVIDE ENGINEERING SERVICES TO MITIGATE MINING RELATED PROBLEMS ASSOCIATED WITH ABANDONED MINE LANDS (PERMITTING, DESIGN, CONSTRUCTION MONITORING)	TBD	0%
HATFIELD-MCCOY REGIONAL RECREATION AUTHORITY TWIN HOLLOW CAMPGROUND AML PILOT LOGAN COUNTY, WV	MR. JEFFREY LUSK, EXECUTIVE DIRECTOR 179 RITA MALL ROAD MAN, WV 2563 304-692-6782	PROVIDE ENGINEERING SERVICES TO MITIGATE MINING RELATED PROBLEMS ASSOCIATED WITH ABANDONED MINE LANDS (PERMITTING, DESIGN, CONSTRUCTION MONITORING)	TBD	30%
TOTAL NUMBER OF PROJECTS: 3 of our current projects listed			TOTAL ESTIMATED CONSTRUCTION COSTS: \$ N/A	

16. CURRENT ACTIVITIES ON WHICH YOUR FIRM IS SERVING AS A SUB-CONSULTANT TO OTHERS

PROJECT NAME, TYPE AND LOCATION	NATURE OF FIRMS RESPONSIBILITY	NAME AND ADDRESS OF OWNER	ESTIMATED COMPLETION DATE	ESTIMATED CONSTRUCTION COST	
				ENTIRE PROJECT	YOUR FIRMS RESPONSIBILITY

N/A

17. COMPLETED WORK WITHIN LAST 5 YEARS ON WHICH YOU WERE THE DESIGNATED ENGINEER OF RECORD:

AML RELATED PROJECTS FOR THE WVDEP AND WATERSHED PROTECTION GROUPS

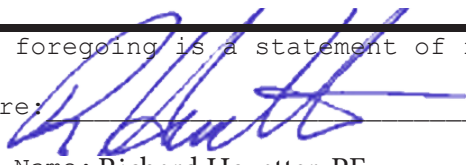
PROJECT NAME, TYPE AND LOCATION	NAME AND ADDRESS OF OWNER	ESTIMATED CONSTRUCTION COST	YEAR	CONSTRUCTED (YES OR NO)
NUTTER RUN LANDSLIDE EMERGENCY AML HARRISON COUNTY, WV	WV DEP, NORTHERN EMERGENCY 101 CAMBRIDGE PLACE BRIDGEPORT, WV 26330 304-842-1900	\$10,000,000	2017	YES
RIDGEWAY DRIVE LANDSLIDE EMERGENCY AML HARRISON COUNTY, WV	WV DEP, NORTHERN EMERGENCY 101 CAMBRIDGE PLACE BRIDGEPORT, WV 26330 304-842-1900	\$20,000,000	2018	YES
ED GOWER HIGHWALL AML GRANT UPSHUR COUNTY, WV	WV DEP, OFFICE OF AMLER 601 57TH STREET SE CHARLESTON, WV 25304	\$11,080,655	2019	YES
ASHLAND RESORT AML PILOT MCDOWELL COUNTY, WV	MR. JEFFREY LUSK, EXECUTIVE DIRECTOR 179 RITA MALL ROAD MAN, WV 2563 304-692-6782	MASTER PLANNING, RECLAMATION WORK, UTILITY EXTENSIONS, BRIDGE DESIGN, ROAD IMPROVEMENTS, ENVIRONMENTAL ASSESSMENTS, PERMITTING	\$1,700,000	YES
ISAAC CREEK LANDSLIDE ABANDONED MINE LANDS AND RECLAMATION NEAR DOLA WV - HARRISON COUNTY	ENVIRONMENTAL PROTECTION OFFICE OF AML&R 601 57TH ST SE CHARLESTON WV 25304	DEVELOP CONSTRUCTION AND EROSION AND SEDIMENT PLANS ALONG WITH TECHNICAL SPECIFICATIONS TO STABILIZE THE LANDSLIDE AND RE-ESTABLISH THE ALIGNMENT OF ISAAC CREEK ROAD (CR 16-1)	\$890,000	YES
HATFIELD-MCCOY REGIONAL RECREATION AUTHORITY IVY BRANCH AML PILOT PROJECT BOONE COUNTY, WV	MR. JEFFREY LUSK, EXECUTIVE DIRECTOR 179 RITA MALL ROAD MAN, WV 2563 304-692-6782	ENVIRONMENTAL PERMITTING AND ASSESSMENTS, NEPA DOCUMENTATION, ENGINEERING DESIGN, BIDDING, CONSTRUCTION ADMINISTRATION	\$350,000	YES
ISAAC CREEK NEAR DOLA WV HARRISON COUNTY	WV DEP, NORTHERN EMERGENCY 101 CAMBRIDGE PLACE BRIDGEPORT, WV 26330 304-842-1900	\$883,096	2022	YES
OWL CREEK HIGHWALL #2 MORGANTOWN WV MONONGALIA COUNTY	WV DEP, NORTHERN EMERGENCY 101 CAMBRIDGE PLACE BRIDGEPORT, WV 26330 304-842-1900	\$2,159,917.25	2023	NO
Branchland (Ellis) Portals and Landslide LINCOLN COUNTY	Mr. Chris Matkins, PE 1159 Nick Rahall Greenway Fayetteville, WV 25840 304-574-4465	\$123,950.00	2023	YES
Bloomingrose Burning Refuse BOONE COUNTY	WV DEP, NORTHERN EMERGENCY 101 CAMBRIDGE PLACE BRIDGEPORT, WV 26330 304-842-1900	\$88,000.00	2022	YES

18. COMPLETED WORK WITHIN LAST 5 YEARS ON WHICH YOUR FIRM HAS BEEN A SUB-CONSULTANT TO OTHER FIRMS (INDICATE PHASE OF WORK FOR WHICH YOUR FIRM WAS RESPONSIBLE)

PROJECT NAME, TYPE AND LOCATION	NAME AND ADDRESS OF OWNER	ESTIMATED CONSTRUCTION COST OF YOUR FIRM'S PORTION	YEAR	CONSTRUCTED (YES OR NO)	FIRM ASSOCIATED WITH
		N/A			

19. Use this space to provide any additional information or description of resources supporting your firm's qualifications to perform work for the West Virginia Abandoned Mine Lands Program.

20. The foregoing is a statement of facts.

Signature: 

Title: Principal

Date: August 29, 2023

Printed Name: Richard Hovatter, PE

AML and RELATED PROJECT EXPERIENCE MATRIX

PROJECT	Exp. Basis C-Corp P-Personal *	Additional info provided in Section (s) **	PROJECT EXPERIENCE REQUIREMENTS															Primary staff participation/capacity *** M-Management P-Professional		
			Abandoned Surface Mine Reclamation	Abandoned Deep Mine Reclamation	Portal/shaft closure	Hydrologic/ Hydraulic design/ Eval.	Remaining Evaluation	Mine/refuse fire abatement	Subsidence investigation/ mitigation	Hazard waste disposal	Project specifications	Water quality evaluation/ mitigation replacement	Construction inspection/management	Water treatment	Equipment/ structure removal	Stream restoration	Geotechnical/ stability	Chadwick Biller	Richard Hovatter	
Anglins Run Portals	C	Project Experience			X	X					X							M		
Roaring Creek	C	Project Experience	X	X		X			X		X							M		
Shinns Run Portals	P			X		X			X		X								M/P	
Squire's Creek Portals	C	Project Experience	X		X	X					X				X			M		
Overfield (Laferty) CS&P	C		X		X	X					X						X	M		
Laurel Run	C	Project Experience	X		X	X					X							M		
Clarksburg Lyons Landslide	C		X			X					X						X	M		
Pleasant Valley	C		X		X	X					X							M		
Roger Camp Hill	C		X			X					X							M		
Owl Creek Highwall #2	C	Project Experience	X		X	X					X					X		M	P	
Landgraff Refuse	C		X			X					X							M		
Canyon Refuse & Dump	C	Project Experience	X		X	X					X				X			M		
Stowe (Prince) Landslide	C					X					X						X	M	P	
Lamberts Run Site 7	C	Project Experience	X			X					X	X	X	X		X		M		
Swamp Run #1	C	Project Experience	X			X					X	X	X	X		X		M		
Dans Branch	C					X					X						X	M		
Ed Gower Highwall #2	C		X		X	X					X							M	P	
Martinka Mine	C		X			X					X	X	X	X				M		
Kempton Rehabilitation	C		X			X					X	X	X	X	X	X	X	M	P	
Design Group B	C		X	X	X	X					X	X	X		X	X	X	M	P	

*List whether project experience is corporate or personnel based or both

** Use this area to provide specific sections or pages if needed for reference

*** List primary design personnel and their functional capacity for the projects listed.

ABANDONED MINE LANDS (AML) CONTRACTOR INFORMATION FORM

You must complete this form for your AML contracting officer to request an eligibility evaluation from the Office of Surface Mining Reclamation and Enforcement (OSMRE) to determine if you are eligible to receive an AML contract. This requirement can be found under OSMRE's regulations at 30 CFR 874.16. **NOTE:** This form must be signed and **dated within 30 days** of submission to be considered for a current bid.

Part A: General InformationBusiness Name: The Thrasher Group, Inc.Tax ID #: 55-0633596Address: 600 White Oaks BlvdCity, State, & Zip: Bridgeport, WV 26330Phone Number: 304-624-4108Email Address: llint@thethrashergroup.com**Part B: Obtain an Organizational Family Tree (OFT) from the Applicant Violator System (AVS)**

If you plan to certify the existing AVS information or submit updates under Part C, you must include an OFT. Instructions for downloading an OFT from the AVS can be found at:

<https://www.osmre.gov/resources/forms/OMB1029-0119instructions.pdf>

If you require assistance you may contact the AVS Office by phone at: 800-643-9748, or by email at: avshelp@osmre.gov.

Part C: Certifying and updating information in the AVS

Select one of the options, follow the instructions for the selected option, sign, and date below.

I, Lauren Lint, have express authority to certify that:
(Print Name)

- ☐ 1. Our business is listed in the AVS. The information is accurate, complete, and up to date. (If you select this option, you must attach an Entity OFT from the AVS to this form). Do not complete Part D.
- ☒ 2. Our business is in the AVS. The information needs to be updated. (If you select this option, you must attach an Entity OFT from the AVS to this form). Complete Part D to provide the missing or corrected information.
- ☐ 3. Our business is not listed in the AVS. The information needs to be added. Complete Part D to provide the information.

8-22-23
Date

Lauren Lint
Signature

CFO
Title

Part D: OFT Information

Contractor's Business Name: The Thrasher Group, Inc.

If the current Entity OFT information for your business is incomplete in the AVS, or if there is no information in the AVS for your business, you must provide all of the following information as it applies to your business. Please include additional copies of this page if the space below is not sufficient to capture all information.

- Every officer (President, Vice President, Secretary, Treasurer, etc.);
- All Directors, Partners, and Members;
- All persons performing a function similar to a Director;
- Every person or business that owns 10% or more of the voting stock in your business;
- Any other person(s) who has the ability to determine the manner in which the AML reclamation project is being conducted.
- **Please list an end date for any person who is no longer with your business.**

Name: Henry Wood Thrasher
Address: 600 White Oaks Blvd
City, State, Zip: Bridgeport, WV 26330
Begin Date: 04/01/2022
End Date: N/A
% Ownership: 19.45%
Position/Title: President
Phone Number: 304-624-4108

Name: Chad Riley
Address: 600 White Oaks Blvd
City, State, Zip: Bridgeport, WV 26330
Begin Date: 04/01/2022
End Date: N/A
% Ownership: 2.65%
Position/Title: Vice President
Phone Number: 304-624-4108

Name: Lauren Lint
Address: 600 White Oaks Blvd
City, State, Zip: Bridgeport, WV 26330
Begin Date: 04/01/2022
End Date: N/A
% Ownership: 0.83%
Position/Title: Treasurer
Phone Number: 304-624-4108

Name: Clayton White
Address: 600 White Oaks Blvd
City, State, Zip: Bridgeport, WV 26330
Begin Date: 04/01/2022
End Date: N/A
% Ownership: 0.83%
Position/Title: Secretary
Phone Number: 304-624-4108

PAPERWORK REDUCTION STATEMENT

The Paperwork Reduction Act of 1995 (44 U.S.C 3501) requires us to inform you that: Federal Agencies may not conduct or sponsor, and a person is not required to respond to, a collection of information unless it displays a current valid OMB control number. This information is necessary for all successful bidders prior to the distribution of AML funds, and is required to obtain a benefit.

Public reporting burden for this form is estimated to range from 15 minutes to one hour, with an average of 30 minutes per response, including time for reviewing instructions, gather and maintaining data, and completing and reviewing the form. You may direct comments regarding the burden estimate or any other aspect of this form to the Information Collection Clearance Officer, Office of Surface Mining Reclamation and Enforcement, 1849 C Street, NW, Room 4559, Washington, DC 20240.

Part D: OFT Information

Contractor's Business Name: The Thrasher Group, Inc.

If the current Entity OFT information for your business is incomplete in the AVS, or if there is no information in the AVS for your business, you must provide all of the following information as it applies to your business. Please include additional copies of this page if the space below is not sufficient to capture all information.

- Every officer (President, Vice President, Secretary, Treasurer, etc.);
- All Directors, Partners, and Members;
- All persons performing a function similar to a Director;
- Every person or business that owns 10% or more of the voting stock in your business;
- Any other person(s) who has the ability to determine the manner in which the AML reclamation project is being conducted.
- **Please list an end date for any person who is no longer with your business.**

Name: Kenneth Moran
Address: 600 White Oaks Blvd
City, State, Zip: Bridgeport, WV 26330
Begin Date: 05/27/1991
End Date: 04/01/2022
% Ownership: 0
Position/Title: Shareholder
Phone Number: 304-624-4108

Name: Ronald Stanley
Address: 600 White Oaks Blvd
City, State, Zip: Bridgeport, WV 26330
Begin Date: 01/01/2020
End Date: 04/01/2022
% Ownership: 0
Position/Title: Vice President
Phone Number: 304-624-4108

Name: Chad Riley
Address: 600 White Oaks Blvd
City, State, Zip: Bridgeport, WV 26330
Begin Date: 01/01/2020
End Date: 04/01/2022
% Ownership: 0
Position/Title: President
Phone Number: 304-624-4108

Name: Ronald Stanley
Address: 600 White Oaks Blvd
City, State, Zip: Bridgeport, WV 26330
Begin Date: 02/04/2009
End Date: 04/01/2022
% Ownership: 0
Position/Title: Treasurer
Phone Number: 304-624-4108

PAPERWORK REDUCTION STATEMENT

The Paperwork Reduction Act of 1995 (44 U.S.C 3501) requires us to inform you that: Federal Agencies may not conduct or sponsor, and a person is not required to respond to, a collection of information unless it displays a current valid OMB control number. This information is necessary for all successful bidders prior to the distribution of AML funds, and is required to obtain a benefit.

Public reporting burden for this form is estimated to range from 15 minutes to one hour, with an average of 30 minutes per response, including time for reviewing instructions, gather and maintaining data, and completing and reviewing the form. You may direct comments regarding the burden estimate or any other aspect of this form to the Information Collection Clearance Officer, Office of Surface Mining Reclamation and Enforcement, 1849 C Street, NW, Room 4559, Washington, DC 20240.

Part D: OFT Information

Contractor's Business Name: The Thrasher Group, Inc.

If the current Entity OFT information for your business is incomplete in the AVS, or if there is no information in the AVS for your business, you must provide all of the following information as it applies to your business. Please include additional copies of this page if the space below is not sufficient to capture all information.

- Every officer (President, Vice President, Secretary, Treasurer, etc.);
- All Directors, Partners, and Members;
- All persons performing a function similar to a Director;
- Every person or business that owns 10% or more of the voting stock in your business;
- Any other person(s) who has the ability to determine the manner in which the AML reclamation project is being conducted.
- **Please list an end date for any person who is no longer with your business.**

Name: Richard Hovatter
Address: 600 White Oaks Blvd
City, State, Zip: Bridgeport, WV 26330
Begin Date: 08/29/2011
End Date: N/A
% Ownership: 0.1146%
Position/Title: Manager
Phone Number: 304-624-4108

Name: Samuel Rich
Address: 600 White Oaks Blvd
City, State, Zip: Bridgeport, WV 26330
Begin Date: 04/01/2022
End Date: N/A
% Ownership: 0.4584%
Position/Title: Manager
Phone Number: 304-624-4108

Name: Clay Riley
Address: 600 White Oaks Blvd
City, State, Zip: Bridgeport, WV 26330
Begin Date: 01/01/2020
End Date: 04/01/2022
% Ownership: 2.4710%
Position/Title: Secretary
Phone Number: 304-624-4108

Name: Ronald Stanley
Address: 600 White Oaks Blvd
City, State, Zip: Bridgeport, WV 26330
Begin Date: 02/04/2009
End Date: 01/01/2020
% Ownership:
Position/Title: Secretary
Phone Number: 304-624-4108

PAPERWORK REDUCTION STATEMENT

The Paperwork Reduction Act of 1995 (44 U.S.C 3501) requires us to inform you that: Federal Agencies may not conduct or sponsor, and a person is not required to respond to, a collection of information unless it displays a current valid OMB control number. This information is necessary for all successful bidders prior to the distribution of AML funds, and is required to obtain a benefit.

Public reporting burden for this form is estimated to range from 15 minutes to one hour, with an average of 30 minutes per response, including time for reviewing instructions, gather and maintaining data, and completing and reviewing the form. You may direct comments regarding the burden estimate or any other aspect of this form to the Information Collection Clearance Officer, Office of Surface Mining Reclamation and Enforcement, 1849 C Street, NW, Room 4559, Washington, DC 20240.



AVS OFT Report - 6/16/2022 3:21:35 PM

All OFT's where the selected entity is listed as an entity or related entity

Entity Selected (260544) The Thrasher Group Inc

Parent Entity	Relationship	Description	Related Entity	% Ownership	Begin Date	End Date
(260544) The Thrasher Group Inc	Manager	Senior Project Manager	(260548) Richard G Hovatter		8/29/2011	
(260544) The Thrasher Group Inc	Shareholder		(260545) Kenneth P Moran	10%	5/27/1991	
(260544) The Thrasher Group Inc	President		(260547) Chad Riley		1/1/2020	
(260544) The Thrasher Group Inc	Secretary		(264948) Clay Riley		1/1/2020	
(260544) The Thrasher Group Inc	Shareholder		(264948) Clay Riley	3%	1/31/2008	
(260544) The Thrasher Group Inc	Shareholder		(260547) Chad Riley	3%	6/22/1997	
(260544) The Thrasher Group Inc	Vice President		(260546) Ronald Stanley		1/1/2020	
(260544) The Thrasher Group Inc	Treasurer		(260546) Ronald Stanley		2/4/2009	



THRASHER